

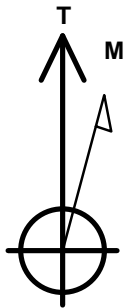
# Bayswater Exploration & Production, LLC

Well Name: **Arellano T-10-9HN**

Surface Location: Arellano 10-L Pad Sec.10-T5N-R65W  
 North American Datum 1983 , US State Plane 1983 , Colorado Northern Zone  
 Ground Elevation: 4616.0  
 +N/-S +E/-W Northing Easting Latitude Longitude Slot  
 0.0 0.0 1393614.87 3239135.70 40.410696 -104.641227  
 RKB - 24' WELL @ 4640.0ft (RKB - 24')

## WELLBORE TARGET DETAILS

Name	TVD	+N/-S	+E/-W	Shape
SHL 1495'FSL & 335'FEL, Sec.10	1.0	0.0	0.0	Point
BHL 170'FSL & 890'FEL, Sec.9	6780.0	-1367.2	-5809.4	Point



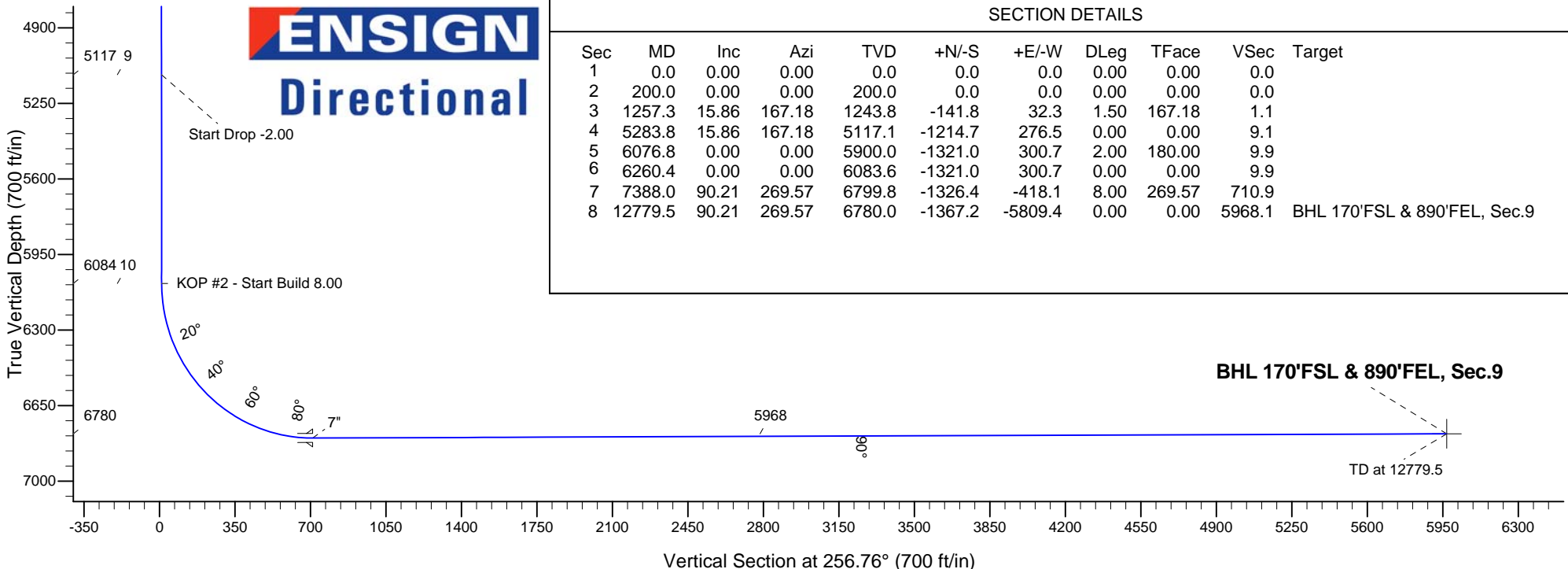
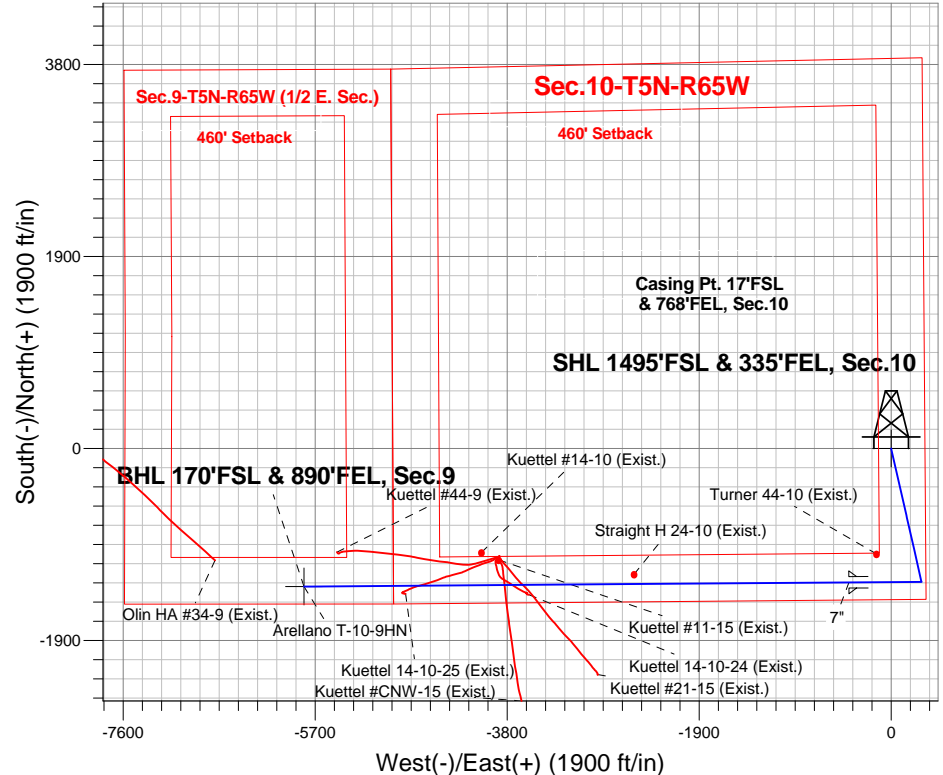
Azimuths to True North  
 Magnetic North: 8.34°

Magnetic Field  
 Strength: 52792.3snT  
 Dip Angle: 66.96°  
 Date: 11/11/2014  
 Model: IGRF2010

Arellano 10-L Pad Sec.10-T5N-R65W  
 Arellano T-10-9HN  
 Plan #1 (11-11-14)  
 18:16, November 17 2014

## ANNOTATIONS

TVD	MD	Annotation
200.0	200.0	KOP - Start Build 1.50
5117.1	5283.8	Start Drop -2.00
6083.6	6260.4	KOP #2 - Start Build 8.00
6780.0	12779.5	TD at 12779.5



**ENSIGN**  
 Directional

## SECTION DETAILS

Sec	MD	Inc	Azi	TVD	+N/-S	+E/-W	DLeg	TFace	VSec	Target
1	0.0	0.00	0.00	0.0	0.0	0.0	0.00	0.00	0.0	
2	200.0	0.00	0.00	200.0	0.0	0.0	0.00	0.00	0.0	
3	1257.3	15.86	167.18	1243.8	-141.8	32.3	1.50	167.18	1.1	
4	5283.8	15.86	167.18	5117.1	-1214.7	276.5	0.00	0.00	9.1	
5	6076.8	0.00	0.00	5900.0	-1321.0	300.7	2.00	180.00	9.9	
6	6260.4	0.00	0.00	6083.6	-1321.0	300.7	0.00	0.00	9.9	
7	7388.0	90.21	269.57	6799.8	-1326.4	-418.1	8.00	269.57	710.9	
8	12779.5	90.21	269.57	6780.0	-1367.2	-5809.4	0.00	0.00	5968.1	BHL 170'FSL & 890'FEL, Sec.9



# **Bayswater Exploration & Production, LLC**

**SEC.10-T5N-R65W**

**Arellano 10-L Pad Sec.10-T5N-R65W**

**Arellano T-10-9HN**

**Wellbore #1**

**Plan: Plan #1 (11-11-14)**

## **Standard Planning Report**

**17 November, 2014**



**BAYSWATER**  
**EXPLORATION & PRODUCTION, LLC**

<b>Database:</b>	Landmark	<b>Local Co-ordinate Reference:</b>	Well Arellano T-10-9HN
<b>Company:</b>	Bayswater Exploration & Production, LLC	<b>TVD Reference:</b>	WELL @ 4640.0ft (RKB - 24')
<b>Project:</b>	SEC.10-T5N-R65W	<b>MD Reference:</b>	WELL @ 4640.0ft (RKB - 24')
<b>Site:</b>	Arellano 10-L Pad Sec.10-T5N-R65W	<b>North Reference:</b>	True
<b>Well:</b>	Arellano T-10-9HN	<b>Survey Calculation Method:</b>	Minimum Curvature
<b>Wellbore:</b>	Wellbore #1		
<b>Design:</b>	Plan #1 (11-11-14)		

<b>Project</b>	SEC.10-T5N-R65W, Weld County, CO		
<b>Map System:</b>	US State Plane 1983	<b>System Datum:</b>	Mean Sea Level
<b>Geo Datum:</b>	North American Datum 1983		Using Well Reference Point
<b>Map Zone:</b>	Colorado Northern Zone		

Site		Arellano 10-L Pad Sec.10-T5N-R65W				
Site Position:		Northing:	1,393,742.11 ft	Latitude:	40.411044	
From:	Lat/Long	Easting:	3,239,181.53ft	Longitude:	-104.641058	
Position Uncertainty:		0.0 ft	Slot Radius:	"	Grid Convergence:	0.55 °

Well	Arellano T-10-9HN					
Well Position	+N-S	-126.8 ft	Northing:	1,393,614.87 ft	Latitude:	40.410696
	+E-W	-47.1 ft	Easting:	3,239,135.70 ft	Longitude:	-104.641227
Position Uncertainty		0.0 ft	Wellhead Elevation:	ft	Ground Level:	4,616.0 ft

<b>Wellbore</b>	Wellbore #1				
<b>Magnetics</b>	<b>Model Name</b>	<b>Sample Date</b>	<b>Declination (°)</b>	<b>Dip Angle (°)</b>	<b>Field Strength (nT)</b>
	IGRF2010	11/11/2014	8.34	66.96	52,792

<b>Design</b>	Plan #1 (11-11-14)			
<b>Audit Notes:</b>				
<b>Version:</b>	<b>Phase:</b>	PROTOTYPE	<b>Tie On Depth:</b>	0.0
<b>Vertical Section:</b>	<b>Depth From (TVD) (ft)</b>	<b>+N/-S (ft)</b>	<b>+E/-W (ft)</b>	<b>Direction (°)</b>
	0.0	0.0	0.0	256.76

<b>Plan Sections</b>										
Measured Depth (ft)	Inclination (°)	Azimuth (°)	Vertical Depth (ft)	+N/-S (ft)	+E/-W (ft)	Dogleg Rate (°/100ft)	Build Rate (°/100ft)	Turn Rate (°/100ft)	TFO (°)	Target
0.0	0.00	0.00	0.0	0.0	0.0	0.00	0.00	0.00	0.00	
200.0	0.00	0.00	200.0	0.0	0.0	0.00	0.00	0.00	0.00	
1,257.3	15.86	167.18	1,243.8	-141.8	32.3	1.50	1.50	0.00	167.18	
5,283.8	15.86	167.18	5,117.1	-1,214.7	276.5	0.00	0.00	0.00	0.00	
6,076.8	0.00	0.00	5,900.0	-1,321.0	300.7	2.00	-2.00	0.00	180.00	
6,260.4	0.00	0.00	6,083.6	-1,321.0	300.7	0.00	0.00	0.00	0.00	
7,388.0	90.21	269.57	6,799.8	-1,326.4	-418.1	8.00	8.00	0.00	269.57	
12,779.5	90.21	269.57	6,780.0	-1,367.2	-5,809.4	0.00	0.00	0.00	0.00	BHL 170'FSL & 89C

<b>Database:</b>	Landmark	<b>Local Co-ordinate Reference:</b>	Well Arellano T-10-9HN
<b>Company:</b>	Bayswater Exploration & Production, LLC	<b>TVD Reference:</b>	WELL @ 4640.0ft (RKB - 24')
<b>Project:</b>	SEC.10-T5N-R65W	<b>MD Reference:</b>	WELL @ 4640.0ft (RKB - 24')
<b>Site:</b>	Arellano 10-L Pad Sec.10-T5N-R65W	<b>North Reference:</b>	True
<b>Well:</b>	Arellano T-10-9HN	<b>Survey Calculation Method:</b>	Minimum Curvature
<b>Wellbore:</b>	Wellbore #1		
<b>Design:</b>	Plan #1 (11-11-14)		

Planned Survey									
Measured Depth (ft)	Inclination (°)	Azimuth (°)	Vertical Depth (ft)	+N/-S (ft)	+E/-W (ft)	Vertical Section (ft)	Dogleg Rate (°/100ft)	Build Rate (°/100ft)	Turn Rate (°/100ft)
0.0	0.00	0.00	0.0	0.0	0.0	0.0	0.00	0.00	0.00
100.0	0.00	0.00	100.0	0.0	0.0	0.0	0.00	0.00	0.00
200.0	0.00	0.00	200.0	0.0	0.0	0.0	0.00	0.00	0.00
KOP - Start Build 1.50									
300.0	1.50	167.18	300.0	-1.3	0.3	0.0	1.50	1.50	0.00
400.0	3.00	167.18	399.9	-5.1	1.2	0.0	1.50	1.50	0.00
500.0	4.50	167.18	499.7	-11.5	2.6	0.1	1.50	1.50	0.00
600.0	6.00	167.18	599.3	-20.4	4.6	0.2	1.50	1.50	0.00
700.0	7.50	167.18	698.6	-31.9	7.3	0.2	1.50	1.50	0.00
800.0	9.00	167.18	797.5	-45.9	10.4	0.3	1.50	1.50	0.00
900.0	10.50	167.18	896.1	-62.4	14.2	0.5	1.50	1.50	0.00
1,000.0	12.00	167.18	994.2	-81.4	18.5	0.6	1.50	1.50	0.00
1,100.0	13.50	167.18	1,091.7	-102.9	23.4	0.8	1.50	1.50	0.00
1,200.0	15.00	167.18	1,188.6	-126.9	28.9	1.0	1.50	1.50	0.00
1,257.3	15.86	167.18	1,243.8	-141.8	32.3	1.1	1.50	1.50	0.00
1,300.0	15.86	167.18	1,284.9	-153.1	34.9	1.2	0.00	0.00	0.00
1,400.0	15.86	167.18	1,381.1	-179.8	40.9	1.4	0.00	0.00	0.00
1,500.0	15.86	167.18	1,477.3	-206.4	47.0	1.6	0.00	0.00	0.00
1,600.0	15.86	167.18	1,573.5	-233.1	53.1	1.8	0.00	0.00	0.00
1,700.0	15.86	167.18	1,669.7	-259.7	59.1	2.0	0.00	0.00	0.00
1,800.0	15.86	167.18	1,765.9	-286.4	65.2	2.2	0.00	0.00	0.00
1,900.0	15.86	167.18	1,862.1	-313.0	71.3	2.4	0.00	0.00	0.00
2,000.0	15.86	167.18	1,958.3	-339.7	77.3	2.6	0.00	0.00	0.00
2,100.0	15.86	167.18	2,054.5	-366.3	83.4	2.8	0.00	0.00	0.00
2,200.0	15.86	167.18	2,150.7	-393.0	89.5	3.0	0.00	0.00	0.00
2,300.0	15.86	167.18	2,246.9	-419.6	95.5	3.2	0.00	0.00	0.00
2,400.0	15.86	167.18	2,343.1	-446.3	101.6	3.4	0.00	0.00	0.00
2,500.0	15.86	167.18	2,439.2	-472.9	107.6	3.6	0.00	0.00	0.00
2,600.0	15.86	167.18	2,535.4	-499.5	113.7	3.8	0.00	0.00	0.00
2,700.0	15.86	167.18	2,631.6	-526.2	119.8	4.0	0.00	0.00	0.00
2,800.0	15.86	167.18	2,727.8	-552.8	125.8	4.2	0.00	0.00	0.00
2,900.0	15.86	167.18	2,824.0	-579.5	131.9	4.4	0.00	0.00	0.00
3,000.0	15.86	167.18	2,920.2	-606.1	138.0	4.6	0.00	0.00	0.00
3,100.0	15.86	167.18	3,016.4	-632.8	144.0	4.8	0.00	0.00	0.00
3,200.0	15.86	167.18	3,112.6	-659.4	150.1	5.0	0.00	0.00	0.00
3,300.0	15.86	167.18	3,208.8	-686.1	156.2	5.2	0.00	0.00	0.00
3,400.0	15.86	167.18	3,305.0	-712.7	162.2	5.4	0.00	0.00	0.00
3,500.0	15.86	167.18	3,401.2	-739.4	168.3	5.6	0.00	0.00	0.00
3,600.0	15.86	167.18	3,497.4	-766.0	174.4	5.8	0.00	0.00	0.00
3,700.0	15.86	167.18	3,593.6	-792.6	180.4	6.0	0.00	0.00	0.00
3,800.0	15.86	167.18	3,689.8	-819.3	186.5	6.2	0.00	0.00	0.00
3,900.0	15.86	167.18	3,786.0	-845.9	192.6	6.4	0.00	0.00	0.00
4,000.0	15.86	167.18	3,882.2	-872.6	198.6	6.6	0.00	0.00	0.00
4,100.0	15.86	167.18	3,978.3	-899.2	204.7	6.8	0.00	0.00	0.00
4,200.0	15.86	167.18	4,074.5	-925.9	210.8	7.0	0.00	0.00	0.00
4,300.0	15.86	167.18	4,170.7	-952.5	216.8	7.2	0.00	0.00	0.00
4,400.0	15.86	167.18	4,266.9	-979.2	222.9	7.4	0.00	0.00	0.00
4,500.0	15.86	167.18	4,363.1	-1,005.8	229.0	7.6	0.00	0.00	0.00
4,600.0	15.86	167.18	4,459.3	-1,032.5	235.0	7.8	0.00	0.00	0.00
4,700.0	15.86	167.18	4,555.5	-1,059.1	241.1	8.0	0.00	0.00	0.00
4,800.0	15.86	167.18	4,651.7	-1,085.8	247.2	8.2	0.00	0.00	0.00
4,900.0	15.86	167.18	4,747.9	-1,112.4	253.2	8.4	0.00	0.00	0.00
5,000.0	15.86	167.18	4,844.1	-1,139.0	259.3	8.6	0.00	0.00	0.00
5,100.0	15.86	167.18	4,940.3	-1,165.7	265.3	8.8	0.00	0.00	0.00

<b>Database:</b>	Landmark	<b>Local Co-ordinate Reference:</b>	Well Arellano T-10-9HN
<b>Company:</b>	Bayswater Exploration & Production, LLC	<b>TVD Reference:</b>	WELL @ 4640.0ft (RKB - 24')
<b>Project:</b>	SEC.10-T5N-R65W	<b>MD Reference:</b>	WELL @ 4640.0ft (RKB - 24')
<b>Site:</b>	Arellano 10-L Pad Sec.10-T5N-R65W	<b>North Reference:</b>	True
<b>Well:</b>	Arellano T-10-9HN	<b>Survey Calculation Method:</b>	Minimum Curvature
<b>Wellbore:</b>	Wellbore #1		
<b>Design:</b>	Plan #1 (11-11-14)		

Planned Survey									
Measured Depth (ft)	Inclination (°)	Azimuth (°)	Vertical Depth (ft)	+N/-S (ft)	+E/-W (ft)	Vertical Section (ft)	Dogleg Rate (°/100ft)	Build Rate (°/100ft)	Turn Rate (°/100ft)
5,200.0	15.86	167.18	5,036.5	-1,192.3	271.4	9.0	0.00	0.00	0.00
5,283.8	15.86	167.18	5,117.1	-1,214.7	276.5	9.1	0.00	0.00	0.00
Start Drop -2.00									
5,300.0	15.54	167.18	5,132.7	-1,218.9	277.5	9.2	1.99	-1.99	0.00
5,400.0	13.54	167.18	5,229.5	-1,243.4	283.0	9.3	2.00	-2.00	0.00
5,500.0	11.54	167.18	5,327.1	-1,264.6	287.9	9.5	2.00	-2.00	0.00
5,600.0	9.54	167.18	5,425.4	-1,282.4	291.9	9.6	2.00	-2.00	0.00
5,700.0	7.54	167.18	5,524.3	-1,296.9	295.2	9.7	2.00	-2.00	0.00
5,800.0	5.54	167.18	5,623.6	-1,308.0	297.7	9.8	2.00	-2.00	0.00
5,900.0	3.54	167.18	5,723.3	-1,315.7	299.5	9.9	2.00	-2.00	0.00
6,000.0	1.54	167.18	5,823.2	-1,320.0	300.5	9.9	2.00	-2.00	0.00
6,076.8	0.00	0.00	5,900.0	-1,321.0	300.7	9.9	2.00	-2.00	0.00
6,100.0	0.00	0.00	5,923.2	-1,321.0	300.7	9.9	0.00	0.00	0.00
6,200.0	0.00	0.00	6,023.2	-1,321.0	300.7	9.9	0.00	0.00	0.00
6,260.4	0.00	0.00	6,083.6	-1,321.0	300.7	9.9	0.00	0.00	0.00
KOP #2 - Start Build 8.00									
6,300.0	3.17	269.57	6,123.2	-1,321.0	299.6	11.0	8.01	8.01	0.00
6,400.0	11.17	269.57	6,222.3	-1,321.1	287.1	23.2	8.00	8.00	0.00
6,500.0	19.17	269.57	6,318.8	-1,321.3	261.0	48.7	8.00	8.00	0.00
6,600.0	27.17	269.57	6,410.6	-1,321.6	221.7	87.0	8.00	8.00	0.00
6,700.0	35.17	269.57	6,496.1	-1,322.0	170.0	137.4	8.00	8.00	0.00
6,800.0	43.17	269.57	6,573.6	-1,322.5	106.8	199.0	8.00	8.00	0.00
6,900.0	51.17	269.57	6,641.5	-1,323.0	33.6	270.4	8.00	8.00	0.00
7,000.0	59.17	269.57	6,698.6	-1,323.6	-48.4	350.4	8.00	8.00	0.00
7,100.0	67.17	269.57	6,743.7	-1,324.3	-137.6	437.3	8.00	8.00	0.00
7,200.0	75.17	269.57	6,775.9	-1,325.0	-232.2	529.6	8.00	8.00	0.00
7,300.0	83.17	269.57	6,794.7	-1,325.8	-330.3	625.2	8.00	8.00	0.00
7,388.0	90.21	269.57	6,799.8	-1,326.4	-418.1	710.9	8.00	8.00	0.00
7"									
7,400.0	90.21	269.57	6,799.7	-1,326.5	-430.1	722.6	0.00	0.00	0.00
7,500.0	90.21	269.57	6,799.4	-1,327.3	-530.1	820.1	0.00	0.00	0.00
7,600.0	90.21	269.57	6,799.0	-1,328.0	-630.1	917.6	0.00	0.00	0.00
7,700.0	90.21	269.57	6,798.6	-1,328.8	-730.1	1,015.1	0.00	0.00	0.00
7,800.0	90.21	269.57	6,798.3	-1,329.6	-830.1	1,112.6	0.00	0.00	0.00
7,900.0	90.21	269.57	6,797.9	-1,330.3	-930.1	1,210.1	0.00	0.00	0.00
8,000.0	90.21	269.57	6,797.5	-1,331.1	-1,030.1	1,307.6	0.00	0.00	0.00
8,100.0	90.21	269.57	6,797.2	-1,331.8	-1,130.1	1,405.1	0.00	0.00	0.00
8,200.0	90.21	269.57	6,796.8	-1,332.6	-1,230.1	1,502.6	0.00	0.00	0.00
8,300.0	90.21	269.57	6,796.4	-1,333.3	-1,330.1	1,600.2	0.00	0.00	0.00
8,400.0	90.21	269.57	6,796.1	-1,334.1	-1,430.1	1,697.7	0.00	0.00	0.00
8,500.0	90.21	269.57	6,795.7	-1,334.9	-1,530.1	1,795.2	0.00	0.00	0.00
8,600.0	90.21	269.57	6,795.3	-1,335.6	-1,630.1	1,892.7	0.00	0.00	0.00
8,700.0	90.21	269.57	6,795.0	-1,336.4	-1,730.1	1,990.2	0.00	0.00	0.00
8,800.0	90.21	269.57	6,794.6	-1,337.1	-1,830.1	2,087.7	0.00	0.00	0.00
8,900.0	90.21	269.57	6,794.2	-1,337.9	-1,930.1	2,185.2	0.00	0.00	0.00
9,000.0	90.21	269.57	6,793.9	-1,338.6	-2,030.1	2,282.7	0.00	0.00	0.00
9,100.0	90.21	269.57	6,793.5	-1,339.4	-2,130.0	2,380.2	0.00	0.00	0.00
9,200.0	90.21	269.57	6,793.1	-1,340.2	-2,230.0	2,477.8	0.00	0.00	0.00
9,300.0	90.21	269.57	6,792.8	-1,340.9	-2,330.0	2,575.3	0.00	0.00	0.00
9,400.0	90.21	269.57	6,792.4	-1,341.7	-2,430.0	2,672.8	0.00	0.00	0.00
9,500.0	90.21	269.57	6,792.0	-1,342.4	-2,530.0	2,770.3	0.00	0.00	0.00
9,600.0	90.21	269.57	6,791.7	-1,343.2	-2,630.0	2,867.8	0.00	0.00	0.00
9,700.0	90.21	269.57	6,791.3	-1,343.9	-2,730.0	2,965.3	0.00	0.00	0.00

<b>Database:</b>	Landmark	<b>Local Co-ordinate Reference:</b>	Well Arellano T-10-9HN
<b>Company:</b>	Bayswater Exploration & Production, LLC	<b>TVD Reference:</b>	WELL @ 4640.0ft (RKB - 24')
<b>Project:</b>	SEC.10-T5N-R65W	<b>MD Reference:</b>	WELL @ 4640.0ft (RKB - 24')
<b>Site:</b>	Arellano 10-L Pad Sec.10-T5N-R65W	<b>North Reference:</b>	True
<b>Well:</b>	Arellano T-10-9HN	<b>Survey Calculation Method:</b>	Minimum Curvature
<b>Wellbore:</b>	Wellbore #1		
<b>Design:</b>	Plan #1 (11-11-14)		

Planned Survey										
Measured Depth (ft)	Inclination (°)	Azimuth (°)	Vertical Depth (ft)	+N/-S (ft)	+E/-W (ft)	Vertical Section (ft)	Dogleg Rate (°/100ft)	Build Rate (°/100ft)	Turn Rate (°/100ft)	
9,800.0	90.21	269.57	6,790.9	-1,344.7	-2,830.0	3,062.8	0.00	0.00	0.00	
9,900.0	90.21	269.57	6,790.6	-1,345.5	-2,930.0	3,160.3	0.00	0.00	0.00	
10,000.0	90.21	269.57	6,790.2	-1,346.2	-3,030.0	3,257.8	0.00	0.00	0.00	
10,100.0	90.21	269.57	6,789.8	-1,347.0	-3,130.0	3,355.3	0.00	0.00	0.00	
10,200.0	90.21	269.57	6,789.5	-1,347.7	-3,230.0	3,452.9	0.00	0.00	0.00	
10,300.0	90.21	269.57	6,789.1	-1,348.5	-3,330.0	3,550.4	0.00	0.00	0.00	
10,400.0	90.21	269.57	6,788.7	-1,349.2	-3,430.0	3,647.9	0.00	0.00	0.00	
10,500.0	90.21	269.57	6,788.4	-1,350.0	-3,530.0	3,745.4	0.00	0.00	0.00	
10,600.0	90.21	269.57	6,788.0	-1,350.7	-3,630.0	3,842.9	0.00	0.00	0.00	
10,700.0	90.21	269.57	6,787.6	-1,351.5	-3,730.0	3,940.4	0.00	0.00	0.00	
10,800.0	90.21	269.57	6,787.3	-1,352.3	-3,830.0	4,037.9	0.00	0.00	0.00	
10,900.0	90.21	269.57	6,786.9	-1,353.0	-3,930.0	4,135.4	0.00	0.00	0.00	
11,000.0	90.21	269.57	6,786.5	-1,353.8	-4,030.0	4,232.9	0.00	0.00	0.00	
11,100.0	90.21	269.57	6,786.2	-1,354.5	-4,130.0	4,330.5	0.00	0.00	0.00	
11,200.0	90.21	269.57	6,785.8	-1,355.3	-4,230.0	4,428.0	0.00	0.00	0.00	
11,300.0	90.21	269.57	6,785.4	-1,356.0	-4,330.0	4,525.5	0.00	0.00	0.00	
11,400.0	90.21	269.57	6,785.1	-1,356.8	-4,430.0	4,623.0	0.00	0.00	0.00	
11,500.0	90.21	269.57	6,784.7	-1,357.6	-4,530.0	4,720.5	0.00	0.00	0.00	
11,600.0	90.21	269.57	6,784.3	-1,358.3	-4,630.0	4,818.0	0.00	0.00	0.00	
11,700.0	90.21	269.57	6,784.0	-1,359.1	-4,730.0	4,915.5	0.00	0.00	0.00	
11,800.0	90.21	269.57	6,783.6	-1,359.8	-4,830.0	5,013.0	0.00	0.00	0.00	
11,900.0	90.21	269.57	6,783.2	-1,360.6	-4,929.9	5,110.5	0.00	0.00	0.00	
12,000.0	90.21	269.57	6,782.9	-1,361.3	-5,029.9	5,208.0	0.00	0.00	0.00	
12,100.0	90.21	269.57	6,782.5	-1,362.1	-5,129.9	5,305.6	0.00	0.00	0.00	
12,200.0	90.21	269.57	6,782.1	-1,362.9	-5,229.9	5,403.1	0.00	0.00	0.00	
12,300.0	90.21	269.57	6,781.8	-1,363.6	-5,329.9	5,500.6	0.00	0.00	0.00	
12,400.0	90.21	269.57	6,781.4	-1,364.4	-5,429.9	5,598.1	0.00	0.00	0.00	
12,500.0	90.21	269.57	6,781.0	-1,365.1	-5,529.9	5,695.6	0.00	0.00	0.00	
12,600.0	90.21	269.57	6,780.7	-1,365.9	-5,629.9	5,793.1	0.00	0.00	0.00	
12,700.0	90.21	269.57	6,780.3	-1,366.6	-5,729.9	5,890.6	0.00	0.00	0.00	
12,779.5	90.21	269.57	6,780.0	-1,367.2	-5,809.4	5,968.1	0.00	0.00	0.00	
TD at 12779.5										

Targets										
Target Name	Dip Angle (°)	Dip Dir. (°)	TVD (ft)	+N/-S (ft)	+E/-W (ft)	Northing (ft)	Easting (ft)	Latitude	Longitude	
- hit/miss target										
- Shape										
SHL 1495'FSL & 335'I	0.00	0.00	1.0	0.0	0.0	1,393,614.88	3,239,135.70	40.410696	-104.641227	
- plan hits target center										
- Point										
BHL 170'FSL & 890'F	0.00	0.00	6,780.0	-1,367.2	-5,809.4	1,392,191.43	3,233,339.80	40.406941	-104.662088	
- plan hits target center										
- Point										

Casing Points					
Measured Depth (ft)	Vertical Depth (ft)	Name	Casing Diameter (")	Hole Diameter (")	
7,388.0	6,799.8	7"	7	7-1/2	

<b>Database:</b>	Landmark	<b>Local Co-ordinate Reference:</b>	Well Arellano T-10-9HN
<b>Company:</b>	Bayswater Exploration & Production, LLC	<b>TVD Reference:</b>	WELL @ 4640.0ft (RKB - 24')
<b>Project:</b>	SEC.10-T5N-R65W	<b>MD Reference:</b>	WELL @ 4640.0ft (RKB - 24')
<b>Site:</b>	Arellano 10-L Pad Sec.10-T5N-R65W	<b>North Reference:</b>	True
<b>Well:</b>	Arellano T-10-9HN	<b>Survey Calculation Method:</b>	Minimum Curvature
<b>Wellbore:</b>	Wellbore #1		
<b>Design:</b>	Plan #1 (11-11-14)		

Plan Annotations				
Measured Depth (ft)	Vertical Depth (ft)	Local Coordinates		Comment
		+N/-S (ft)	+E/-W (ft)	
200.0	200.0	0.0	0.0	KOP - Start Build 1.50
5,283.8	5,117.1	-1,214.7	276.5	Start Drop -2.00
6,260.4	6,083.6	-1,321.0	300.7	KOP #2 - Start Build 8.00
12,779.5	6,780.0	-1,367.2	-5,809.4	TD at 12779.5