

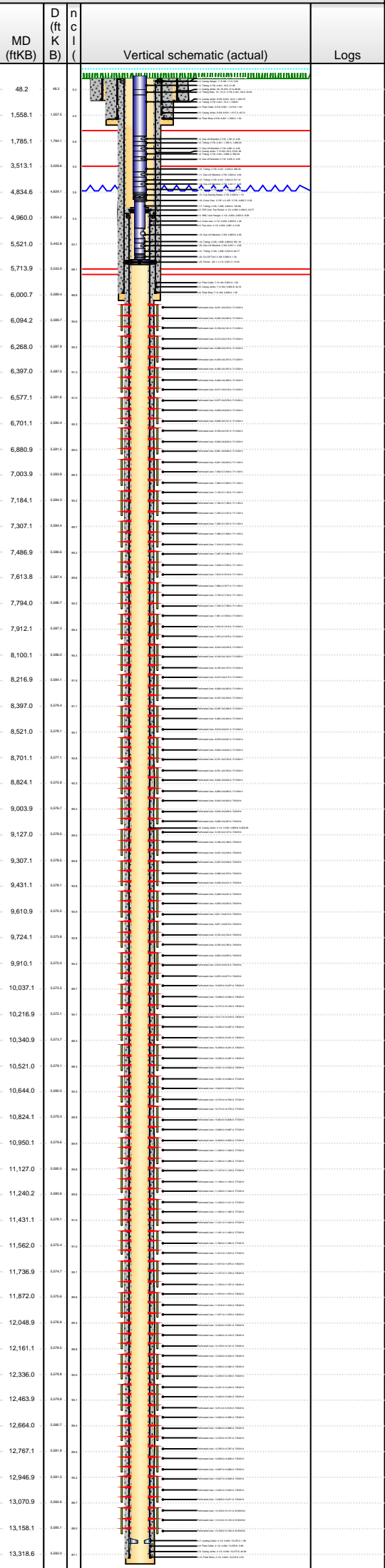


Lease Review All - Frac Summary

Well Name: RAZOR FEDERAL 26J-2311A

API Number 051233804100		WPC ID 1CO0761022		Well Permit Number		Field Name DJ Horizontal Niobrara		County Weld		State CO	
Well Configuration Type Lateral/Horizontal		Orig KB Elv (ft) 4,742.60		Ground Elevation (ft) 4,725.60		Casing Flange Elevation (ft)		Tubing Head Elevation (ft)		Total Depth (ftKB) 13,331.0	
Original Spud Date 4/10/2014		Completion Date 7/12/2014		Asset Group Redtail		Responsible Engineer Andrew Fish		N/S Dist (ft) 2,326.0		N/S Ref FSL	
								E/W Dist (ft) 1,914.0		E/W Ref FEL	
Lot		Quarter 1 NW	Quarter 2 SE	Quarter 3	Quarter 4	Section 26	Section Suffix	Section Type	Township 10 N	Township N/S Dir	Range 58 W

Lateral/Horizontal - Original Hole, 12/9/2014 2:54:15 PM



Wellbore Sections

Wellbore Name	Start Date	Size (in)	Act Top (ftKB)	Act Btm (ftKB)
Original Hole	1/22/2014	20	17.0	97.0
Original Hole	4/10/2014	13 1/2	97.0	1,575.0
Original Hole	4/12/2014	8 3/4	1,575.0	6,012.0
Original Hole	4/14/2014	6	6,012.0	13,331.0

Conductor Pipe, 97.0ftKB						
OD (in)	Wt (lb/ft)	Grade	Top (ftKB)	Btm (ftKB)	Len (ft)	Item Des
16	84.00	K-55	17.0	97.0	80.00	Casing Joints

Surface Csg, 1,559.5ftKB						
OD (in)	Wt (lb/ft)	Grade	Top (ftKB)	Btm (ftKB)	Len (ft)	Item Des
9 5/8	36.00	J-55	17.0	17.0	0.00	Landing Joint
9 5/8	36.00	J-55	17.0	22.0	5.00	Wellhead/ pup jnt
9 5/8	36.00	J-55	22.0	1,515.8	1,493.79	Casing Joints
9 5/8	36.00	J-55	1,515.8	1,517.3	1.50	Float Collar
9 5/8	36.00	J-55	1,517.3	1,558.0	40.74	Casing Joints
9 5/8	36.00	J-55	1,558.0	1,559.5	1.50	Float Shoe

Intermediate Csg, 6,000.5ftKB						
OD (in)	Wt (lb/ft)	Grade	Top (ftKB)	Btm (ftKB)	Len (ft)	Item Des
7	29.00	HCL-80	17.0	17.0	0.00	Landing Joint
7	29.00	HCL-80	17.0	22.0	5.00	Casing Hanger
7	29.00	HCL-80	22.0	5,953.3	5,931.36	Casing Joints
7	29.00	HCL-80	5,953.3	5,954.8	1.50	Float Collar
7	29.00	HCL-80	5,954.8	5,999.0	44.16	Casing Joints
7	29.00	HCL-80	5,999.0	6,000.5	1.50	Float Shoe

Liner, 13,321.0ftKB						
OD (in)	Wt (lb/ft)	Grade	Top (ftKB)	Btm (ftKB)	Len (ft)	Item Des
4 1/2	11.60	L-80	4,932.5	4,932.5	0.00	Casing Joints
4 1/2	11.60	L-80	4,932.5	4,953.3	20.77	ZXP Liner Top Packer
4 1/2	11.60	L-80	4,953.3	4,959.9	6.58	HMC Liner Hanger
4 1/2	11.60	L-80	4,959.9	4,961.4	1.49	Cross over
4 1/2	11.60	L-80	4,961.4	4,966.9	5.48	Pup Joint
4 1/2	11.60	L-80	4,966.9	13,275.3	8,308.46	Casing Joints
4 1/2	11.60	L-80	13,275.3	13,276.9	1.58	Landing Collar
4 1/2	11.60	L-80	13,276.9	13,277.9	0.98	Float Collar
4 1/2	11.60	L-80	13,277.9	13,318.5	40.60	Casing Joints
4 1/2	11.60	L-80	13,318.5	13,321.0	2.53	Float Shoe

Cement Stages					
Des	Pump Start Date	Drill Out Date	Top (ftKB)	Btm (ftKB)	Top Meas Meth
Conductor Cement	1/22/2014		17.0	97.0	Returns to Surface
Surface Casing Cement	4/11/2014		17.0	1,559.5	Returns to Surface
Intermediate Casing Cement	4/14/2014		17.0	6,000.5	Returns to Surface
Liner Cement	4/20/2014		4,932.5	13,321.0	Returns to Surface

Perforations				
Type of Hole	Date	Top (ftKB)	Btm (ftKB)	Zone
Perforated Liner	7/12/2014	6,031.0	6,033.0	Niobrara, Original Hole
Perforated Liner	7/12/2014	6,092.0	6,094.0	Niobrara, Original Hole
Perforated Liner	7/12/2014	6,159.0	6,161.0	Niobrara, Original Hole
Perforated Liner	7/12/2014	6,213.0	6,215.0	Niobrara, Original Hole
Perforated Liner	7/12/2014	6,268.0	6,270.0	Niobrara, Original Hole
Perforated Liner	7/12/2014	6,335.0	6,337.0	Niobrara, Original Hole
Perforated Liner	7/12/2014	6,395.0	6,397.0	Niobrara, Original Hole
Perforated Liner	7/12/2014	6,464.0	6,466.0	Niobrara, Original Hole
Perforated Liner	7/12/2014	6,517.0	6,519.0	Niobrara, Original Hole
Perforated Liner	7/12/2014	6,577.0	6,579.0	Niobrara, Original Hole
Perforated Liner	7/12/2014	6,638.0	6,640.0	Niobrara, Original Hole
Perforated Liner	7/12/2014	6,699.0	6,701.0	Niobrara, Original Hole
Perforated Liner	7/12/2014	6,759.0	6,761.0	Niobrara, Original Hole
Perforated Liner	7/12/2014	6,820.0	6,822.0	Niobrara, Original Hole
Perforated Liner	7/12/2014	6,881.0	6,883.0	Niobrara, Original Hole
Perforated Liner	7/11/2014	6,941.0	6,943.0	Niobrara, Original Hole
Perforated Liner	7/11/2014	7,002.0	7,004.0	Niobrara, Original Hole
Perforated Liner	7/11/2014	7,063.0	7,065.0	Niobrara, Original Hole
Perforated Liner	7/11/2014	7,123.0	7,125.0	Niobrara, Original Hole
Perforated Liner	7/11/2014	7,184.0	7,186.0	Niobrara, Original Hole
Perforated Liner	7/11/2014	7,245.0	7,247.0	Niobrara, Original Hole
Perforated Liner	7/11/2014	7,305.0	7,307.0	Niobrara, Original Hole
Perforated Liner	7/11/2014	7,366.0	7,368.0	Niobrara, Original Hole
Perforated Liner	7/11/2014	7,418.0	7,420.0	Niobrara, Original Hole
Perforated Liner	7/11/2014	7,487.0	7,489.0	Niobrara, Original Hole
Perforated Liner	7/11/2014	7,548.0	7,550.0	Niobrara, Original Hole



Lease Review All - Frac Summary

Well Name: RAZOR FEDERAL 26J-2311A

API Number 051233804100		WPC ID 1CO0761022		Well Permit Number		Field Name DJ Horizontal Niobrara		County Weld		State CO		
Well Configuration Type Lateral/Horizontal		Orig KB Elv (ft) 4,742.60		Ground Elevation (ft) 4,725.60		Casing Flange Elevation (ft)		Tubing Head Elevation (ft)		Total Depth (ftKB) 13,331.0		
Original Spud Date 4/10/2014		Completion Date 7/12/2014		Asset Group Redtail		Responsible Engineer Andrew Fish		N/S Dist (ft) 2,326.0	N/S Ref FSL	E/W Dist (ft) 1,914.0	E/W Ref FEL	
Lot	Quarter 1 NW	Quarter 2 SE	Quarter 3	Quarter 4	Section 26	Section Suffix	Section Type	Township 10 N	Township N/S Dir	Range 58	Range E/W Dir W	Meridian

Lateral/Horizontal - Original Hole, 12/9/2014 2:54:17 PM **Perforations**

MD (ftKB)	D (ft K B)	nc l ()	Vertical schematic (actual)	Logs	Type of Hole	Date	Top (ftKB)	Btm (ftKB)	Zone
					Perforated Liner	7/11/2014	7,612.0	7,614.0	Niobrara, Original Hole
					Perforated Liner	7/11/2014	7,669.0	7,671.0	Niobrara, Original Hole
					Perforated Liner	7/11/2014	7,730.0	7,732.0	Niobrara, Original Hole
					Perforated Liner	7/11/2014	7,794.0	7,796.0	Niobrara, Original Hole
48.2	0.02	0.01			Perforated Liner	7/10/2014	7,851.0	7,853.0	Niobrara, Original Hole
1,558.1	1.027	0.01		Perforated Liner	7/10/2014	7,910.0	7,912.0	Niobrara, Original Hole	
1,785.1	1.784	0.01		Perforated Liner	7/10/2014	7,973.0	7,975.0	Niobrara, Original Hole	
3,513.1	3.096	0.01		Perforated Liner	7/10/2014	8,033.0	8,035.0	Niobrara, Original Hole	
4,834.6	4.831	0.01		Perforated Liner	7/10/2014	8,100.0	8,102.0	Niobrara, Original Hole	
4,960.0	4.954	0.01		Perforated Liner	7/10/2014	8,155.0	8,157.0	Niobrara, Original Hole	
5,521.0	5.452	0.01		Perforated Liner	7/10/2014	8,215.0	8,217.0	Niobrara, Original Hole	
5,713.9	5.653	0.01		Perforated Liner	7/10/2014	8,280.0	8,282.0	Niobrara, Original Hole	
6,000.7	5.954	0.01		Perforated Liner	7/10/2014	8,337.0	8,339.0	Niobrara, Original Hole	
6,094.2	6.087	0.01		Perforated Liner	7/10/2014	8,397.0	8,399.0	Niobrara, Original Hole	
6,268.0	6.257	0.01		Perforated Liner	7/10/2014	8,462.0	8,464.0	Niobrara, Original Hole	
6,397.0	6.350	0.01		Perforated Liner	7/10/2014	8,519.0	8,521.0	Niobrara, Original Hole	
6,577.1	6.574	0.01		Perforated Liner	7/10/2014	8,579.0	8,581.0	Niobrara, Original Hole	
6,701.1	6.694	0.01		Perforated Liner	7/10/2014	8,640.0	8,642.0	Niobrara, Original Hole	
6,880.9	6.871	0.01		Perforated Liner	7/10/2014	8,701.0	8,703.0	Niobrara, Original Hole	
7,003.9	7.003	0.01		Perforated Liner	7/10/2014	8,761.0	8,763.0	Niobrara, Original Hole	
7,184.1	7.184	0.01		Perforated Liner	7/10/2014	8,822.0	8,824.0	Niobrara, Original Hole	
7,307.1	7.307	0.01		Perforated Liner	7/10/2014	8,883.0	8,885.0	Niobrara, Original Hole	
7,486.9	7.486	0.01		Perforated Liner	7/9/2014	8,943.0	8,945.0	Niobrara, Original Hole	
7,613.8	7.613	0.01		Perforated Liner	7/9/2014	9,004.0	9,006.0	Niobrara, Original Hole	
7,794.0	7.794	0.01		Perforated Liner	7/9/2014	9,065.0	9,067.0	Niobrara, Original Hole	
7,912.1	7.912	0.01		Perforated Liner	7/9/2014	9,125.0	9,127.0	Niobrara, Original Hole	
8,100.1	8.100	0.01		Perforated Liner	7/9/2014	9,186.0	9,188.0	Niobrara, Original Hole	
8,216.9	8.216	0.01		Perforated Liner	7/9/2014	9,247.0	9,249.0	Niobrara, Original Hole	
8,397.0	8.397	0.01		Perforated Liner	7/9/2014	9,307.0	9,309.0	Niobrara, Original Hole	
8,521.0	8.521	0.01		Perforated Liner	7/9/2014	9,368.0	9,370.0	Niobrara, Original Hole	
8,701.1	8.701	0.01		Perforated Liner	7/9/2014	9,429.0	9,431.0	Niobrara, Original Hole	
8,824.1	8.824	0.01		Perforated Liner	7/8/2014	9,489.0	9,491.0	Niobrara, Original Hole	
9,003.9	9.003	0.01		Perforated Liner	7/8/2014	9,550.0	9,552.0	Niobrara, Original Hole	
9,127.0	9.127	0.01		Perforated Liner	7/8/2014	9,611.0	9,613.0	Niobrara, Original Hole	
9,307.1	9.307	0.01		Perforated Liner	7/8/2014	9,671.0	9,673.0	Niobrara, Original Hole	
9,431.1	9.431	0.01		Perforated Liner	7/8/2014	9,722.0	9,724.0	Niobrara, Original Hole	
9,610.9	9.610	0.01		Perforated Liner	7/8/2014	9,772.0	9,774.0	Niobrara, Original Hole	
9,724.1	9.724	0.01	Perforated Liner	7/8/2014	9,793.0	9,795.0	Niobrara, Original Hole		
9,910.1	9.910	0.01	Perforated Liner	7/8/2014	9,853.0	9,855.0	Niobrara, Original Hole		
10,037.1	10.037	0.01	Perforated Liner	7/8/2014	9,910.0	9,912.0	Niobrara, Original Hole		
10,216.9	10.216	0.01	Perforated Liner	7/8/2014	9,975.0	9,977.0	Niobrara, Original Hole		
10,340.9	10.340	0.01	Perforated Liner	7/8/2014	10,035.0	10,037.0	Niobrara, Original Hole		
10,521.0	10.521	0.01	Perforated Liner	7/8/2014	10,088.0	10,090.0	Niobrara, Original Hole		
10,644.0	10.644	0.01	Perforated Liner	7/8/2014	10,157.0	10,159.0	Niobrara, Original Hole		
10,824.1	10.824	0.01	Perforated Liner	7/8/2014	10,217.0	10,219.0	Niobrara, Original Hole		
10,950.1	10.950	0.01	Perforated Liner	7/8/2014	10,285.0	10,287.0	Niobrara, Original Hole		
11,127.0	11.127	0.01	Perforated Liner	7/8/2014	10,339.0	10,341.0	Niobrara, Original Hole		
11,240.2	11.240	0.01	Perforated Liner	7/8/2014	10,399.0	10,401.0	Niobrara, Original Hole		
11,431.1	11.431	0.01	Perforated Liner	7/8/2014	10,465.0	10,467.0	Niobrara, Original Hole		
11,562.0	11.562	0.01	Perforated Liner	7/8/2014	10,521.0	10,523.0	Niobrara, Original Hole		
11,736.9	11.736	0.01	Perforated Liner	7/7/2014	10,581.0	10,583.0	Niobrara, Original Hole		
11,872.0	11.872	0.01	Perforated Liner	7/7/2014	10,642.0	10,644.0	Niobrara, Original Hole		
12,048.9	12.048	0.01	Perforated Liner	7/7/2014	10,703.0	10,705.0	Niobrara, Original Hole		
12,161.1	12.161	0.01	Perforated Liner	7/7/2014	10,774.0	10,776.0	Niobrara, Original Hole		
12,336.0	12.336	0.01	Perforated Liner	7/7/2014	10,824.0	10,826.0	Niobrara, Original Hole		
12,463.9	12.463	0.01	Perforated Liner	7/7/2014	10,885.0	10,887.0	Niobrara, Original Hole		
12,664.0	12.664	0.01	Perforated Liner	7/7/2014	10,948.0	10,950.0	Niobrara, Original Hole		
12,767.1	12.767	0.01	Perforated Liner	7/7/2014	10,998.0	11,000.0	Niobrara, Original Hole		
12,946.9	12.946	0.01	Perforated Liner	7/7/2014	11,006.0	11,008.0	Niobrara, Original Hole		
13,070.9	13.070	0.01	Perforated Liner	7/7/2014	11,063.0	11,065.0	Niobrara, Original Hole		
13,158.1	13.158	0.01	Perforated Liner	7/7/2014	11,063.0	11,065.0	Niobrara, Original Hole		
13,318.6	13.318	0.01	Perforated Liner	7/6/2014	11,127.0	11,129.0	Niobrara, Original Hole		
			Perforated Liner	7/6/2014	11,188.0	11,190.0	Niobrara, Original Hole		
			Perforated Liner	7/6/2014	11,238.0	11,240.0	Niobrara, Original Hole		
			Perforated Liner	7/6/2014	11,309.0	11,311.0	Niobrara, Original Hole		
			Perforated Liner	7/6/2014	11,380.0	11,382.0	Niobrara, Original Hole		
			Perforated Liner	7/6/2014	11,431.0	11,433.0	Niobrara, Original Hole		
			Perforated Liner	7/6/2014	11,491.0	11,493.0	Niobrara, Original Hole		
			Perforated Liner	7/6/2014	11,560.0	11,562.0	Niobrara, Original Hole		
			Perforated Liner	7/6/2014	11,613.0	11,615.0	Niobrara, Original Hole		
			Perforated Liner	7/6/2014	11,673.0	11,675.0	Niobrara, Original Hole		
			Perforated Liner	7/6/2014	11,737.0	11,739.0	Niobrara, Original Hole		
			Perforated Liner	7/6/2014	11,795.0	11,797.0	Niobrara, Original Hole		

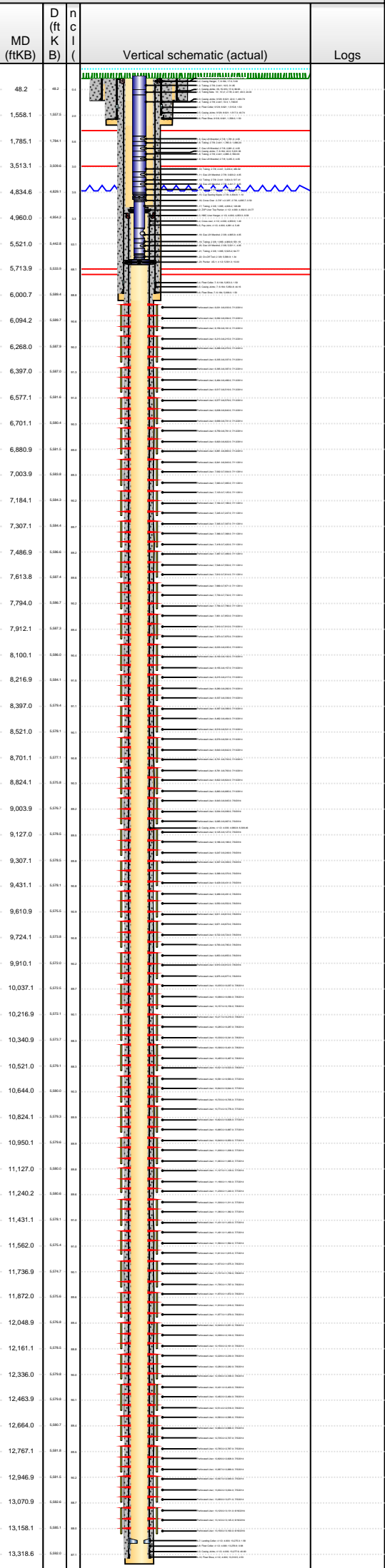


Lease Review All - Frac Summary

Well Name: RAZOR FEDERAL 26J-2311A

API Number 051233804100		WPC ID 1CO0761022		Well Permit Number		Field Name DJ Horizontal Niobrara		County Weld		State CO	
Well Configuration Type Lateral/Horizontal		Orig KB Elv (ft) 4,742.60		Ground Elevation (ft) 4,725.60		Casing Flange Elevation (ft)		Tubing Head Elevation (ft)		Total Depth (ftKB) 13,331.0	
Original Spud Date 4/10/2014		Completion Date 7/12/2014		Asset Group Redtail		Responsible Engineer Andrew Fish		N/S Dist (ft) 2,326.0		N/S Ref FSL	
								E/W Dist (ft) 1,914.0		E/W Ref FEL	
Lot		Quarter 1 NW		Quarter 2 SE		Quarter 3		Quarter 4		Section 26	
										Section Suffix	
										Section Type	
										Township 10 N	
										Township N/S Dir	
										Range 58 W	
										Range E/W Dir	
										Meridian	

Lateral/Horizontal - Original Hole, 12/9/2014 2:54:19 PM



Perforations					
Type of Hole	Date	Top (ftKB)	Btm (ftKB)	Zone	
Perforated Liner	7/6/2014	11,870.0	11,872.0	Niobrara, Original Hole	
Perforated Liner	7/6/2014	11,916.0	11,918.0	Niobrara, Original Hole	
Perforated Liner	7/6/2014	11,977.0	11,979.0	Niobrara, Original Hole	
Perforated Liner	7/6/2014	12,049.0	12,051.0	Niobrara, Original Hole	
Perforated Liner	7/6/2014	12,098.0	12,100.0	Niobrara, Original Hole	
Perforated Liner	7/6/2014	12,159.0	12,161.0	Niobrara, Original Hole	
Perforated Liner	7/6/2014	12,228.0	12,230.0	Niobrara, Original Hole	
Perforated Liner	7/6/2014	12,280.0	12,282.0	Niobrara, Original Hole	
Perforated Liner	7/6/2014	12,336.0	12,338.0	Niobrara, Original Hole	
Perforated Liner	7/6/2014	12,401.0	12,403.0	Niobrara, Original Hole	
Perforated Liner	7/6/2014	12,462.0	12,464.0	Niobrara, Original Hole	
Perforated Liner	7/6/2014	12,514.0	12,516.0	Niobrara, Original Hole	
Perforated Liner	7/5/2014	12,583.0	12,585.0	Niobrara, Original Hole	
Perforated Liner	7/5/2014	12,664.0	12,666.0	Niobrara, Original Hole	
Perforated Liner	7/5/2014	12,705.0	12,707.0	Niobrara, Original Hole	
Perforated Liner	7/5/2014	12,765.0	12,767.0	Niobrara, Original Hole	
Perforated Liner	7/5/2014	12,826.0	12,828.0	Niobrara, Original Hole	
Perforated Liner	7/5/2014	12,887.0	12,889.0	Niobrara, Original Hole	
Perforated Liner	7/5/2014	12,947.0	12,949.0	Niobrara, Original Hole	
Perforated Liner	7/5/2014	13,002.0	13,004.0	Niobrara, Original Hole	
Perforated Liner	7/5/2014	13,069.0	13,071.0	Niobrara, Original Hole	
Perforated Liner	6/16/2014	13,129.0	13,131.0	Niobrara, Original Hole	
Perforated Liner	6/16/2014	13,143.0	13,145.0	Niobrara, Original Hole	
Perforated Liner	6/16/2014	13,158.0	13,160.0	Niobrara, Original Hole	

Stimulations & Treatments

Sand Frac on 7/5/2014 00:00

Comment
Treatment End Date:7/12/2014; Number of staged intervals: 40; Total 15% HCl used: 874 bbl; Min frac gradient: 0.812 psi/ft; Number of perfs: 1440; Slickwater 26411 bbl; Clearstar 30 XL Gel 71197 bbl; 30# Linear Gel 15552 bbl

Total Clean Volu...	Vol Slurry Tot (bbl)	Proppant Desig...	Proppant Frm (lb)	P Max (psi)	Avg Treat...	Avg Treat...	Max Tre...	Frac Gr...
114034.03	120165.60	5,632,000.0	5,694,990.3	7,692.0	5,473.0	47.10	56.20	0.81

Total Add Amount
Proppant 16/30WS 3998240.3 lb; Proppant 20/40WS 1551840.1 lb; Proppant 40/70 WS 144909.9 lb

Stim/Treat Fluids

Fluid Name
Clearstar 30 XL Gel; 30# Linear Gel; 15% HCl

Stim/Treat Stages

Interval 1

Stg #	Start Date	Top (ftKB)	Btm (ftKB)	Vol Clean...	Vol Slurry...	Comment
1	7/5/2014	13,129.0	13,160.0	2878.03	2979.30	Clearstar 30 XL Gel:1505 bbl; 30# Linear Gel:450 bbl; Slickwater:902 bbl; 15% HCl:0 bbl

Stim/Treat Additives

Stg #	Add	Type	Amount	Units	Sand Size
1	Proppant	20/40WS	91,425.3	lb	20/40
1	Proppant	40/70 WS	2,391.0	lb	40/70

Interval 2

Stg #	Start Date	Top (ftKB)	Btm (ftKB)	Vol Clean...	Vol Slurry...	Comment
2	7/5/2014	12,947.0	13,071.0	2909.90	3015.20	Clearstar 30 XL Gel:1609 bbl; 30# Linear Gel:449 bbl; Slickwater:829 bbl; 15% HCl:23 bbl

Stim/Treat Additives

Stg #	Add	Type	Amount	Units	Sand Size
2	Proppant	20/40WS	94,083.6	lb	20/40
2	Proppant	40/70 WS	3,733.1	lb	40/70

Interval 3

Stg #	Start Date	Top (ftKB)	Btm (ftKB)	Vol Clean...	Vol Slurry...	Comment
3	7/5/2014	12,765.0	12,889.0	2950.10	3056.90	Clearstar 30 XL Gel:1525 bbl; 30# Linear Gel:447 bbl; Slickwater:950 bbl; 15% HCl:29 bbl

Stim/Treat Additives

Stg #	Add	Type	Amount	Units	Sand Size
3	Proppant	20/40WS	95,221.9	lb	20/40
3	Proppant	40/70 WS	3,954.0	lb	40/70

Interval 4

Stg #	Start Date	Top (ftKB)	Btm (ftKB)	Vol Clean...	Vol Slurry...	Comment
4	7/5/2014	12,583.0	12,707.0	3036.80	3201.70	Clearstar 30 XL Gel:1981 bbl; 30# Linear Gel:350 bbl; Slickwater:681 bbl; 15% HCl:25 bbl

Stim/Treat Additives

Stg #	Add	Type	Amount	Units	Sand Size
4	Proppant	20/40WS	148,995.9	lb	20/40
4	Proppant	40/70 WS	4,136.8	lb	40/70

Interval 5

Stg #	Start Date	Top (ftKB)	Btm (ftKB)	Vol Clean...	Vol Slurry...	Comment
5	7/6/2014	12,401.0	12,516.0	2859.10	3013.80	Clearstar 30 XL Gel:1818 bbl; 30# Linear Gel:315 bbl; Slickwater:694 bbl; 15% HCl:31 bbl



Lease Review All - Frac Summary

Well Name: RAZOR FEDERAL 26J-2311A

API Number 051233804100		WPC ID 1CO0761022		Well Permit Number		Field Name DJ Horizontal Niobrara		County Weld		State CO	
Well Configuration Type Lateral/Horizontal		Orig KB Elv (ft) 4,742.60		Ground Elevation (ft) 4,725.60		Casing Flange Elevation (ft)		Tubing Head Elevation (ft)		Total Depth (ftKB) 13,331.0	
Original Spud Date 4/10/2014		Completion Date 7/12/2014		Asset Group Redtail		Responsible Engineer Andrew Fish		N/S Dist (ft) 2,326.0		N/S Ref FSL	
								E/W Dist (ft) 1,914.0		E/W Ref FEL	
Lot		Quarter 1 NW	Quarter 2 SE	Quarter 3	Quarter 4	Section 26	Section Suffix	Section Type	Township 10 N	Township N/S Dir	Range 58 W
										Meridian	

Lateral/Horizontal - Original Hole, 12/9/2014 2:54:21 PM			Stim/Treat Additives						
MD (ftKB)	D (ft KB)	n c l (ft)	Stg #	Add	Type	Amount	Units	Sand Size	
48.2	48.2	48.2	5	Proppant	20/40WS	140,021.4	lb	20/40	
1,558.1	1,558.1	1,558.1	5	Proppant	40/70 WS	3,674.4	lb	40/70	
1,785.1	1,785.1	1,785.1	Interval 6						
1,785.1	1,785.1	1,785.1	Stg #	Start Date	Top (ftKB)	Btm (ftKB)	Vol Clean...	Vol Slurry...	Comment
1,785.1	1,785.1	1,785.1	6	7/6/2014	12,228.0	12,338.0	2811.30	2971.30	Clearstar 30 XL Gel:1824 bbl; 30# Linear Gel:301 bbl; Slickwater:657 bbl; 15% HCl:30 bbl
1,785.1	1,785.1	1,785.1	Stim/Treat Additives						
1,785.1	1,785.1	1,785.1	Stg #	Add	Type	Amount	Units	Sand Size	
1,785.1	1,785.1	1,785.1	6	Proppant	20/40WS	145,340.8	lb	20/40	
1,785.1	1,785.1	1,785.1	6	Proppant	40/70 WS	3,243.4	lb	40/70	
1,785.1	1,785.1	1,785.1	Interval 7						
1,785.1	1,785.1	1,785.1	Stg #	Start Date	Top (ftKB)	Btm (ftKB)	Vol Clean...	Vol Slurry...	Comment
1,785.1	1,785.1	1,785.1	7	7/6/2014	12,049.0	12,161.0	2828.10	2984.90	Clearstar 30 XL Gel:1788 bbl; 30# Linear Gel:350 bbl; Slickwater:673 bbl; 15% HCl:17 bbl
1,785.1	1,785.1	1,785.1	Stim/Treat Additives						
1,785.1	1,785.1	1,785.1	Stg #	Add	Type	Amount	Units	Sand Size	
1,785.1	1,785.1	1,785.1	7	Proppant	20/40WS	142,227.4	lb	20/40	
1,785.1	1,785.1	1,785.1	7	Proppant	40/70 WS	3,456.2	lb	40/70	
1,785.1	1,785.1	1,785.1	Interval 8						
1,785.1	1,785.1	1,785.1	Stg #	Start Date	Top (ftKB)	Btm (ftKB)	Vol Clean...	Vol Slurry...	Comment
1,785.1	1,785.1	1,785.1	8	7/6/2014	11,870.0	11,979.0	2874.70	3034.40	Clearstar 30 XL Gel:1807 bbl; 30# Linear Gel:309 bbl; Slickwater:738 bbl; 15% HCl:21 bbl
1,785.1	1,785.1	1,785.1	Stim/Treat Additives						
1,785.1	1,785.1	1,785.1	Stg #	Add	Type	Amount	Units	Sand Size	
1,785.1	1,785.1	1,785.1	8	Proppant	20/40WS	145,264.9	lb	20/40	
1,785.1	1,785.1	1,785.1	8	Proppant	40/70 WS	3,072.9	lb	40/70	
1,785.1	1,785.1	1,785.1	Interval 9						
1,785.1	1,785.1	1,785.1	Stg #	Start Date	Top (ftKB)	Btm (ftKB)	Vol Clean...	Vol Slurry...	Comment
1,785.1	1,785.1	1,785.1	9	7/6/2014	11,673.0	11,797.0	2774.60	2924.50	Clearstar 30 XL Gel:1782 bbl; 30# Linear Gel:299 bbl; Slickwater:672 bbl; 15% HCl:21 bbl
1,785.1	1,785.1	1,785.1	Stim/Treat Additives						
1,785.1	1,785.1	1,785.1	Stg #	Add	Type	Amount	Units	Sand Size	
1,785.1	1,785.1	1,785.1	9	Proppant	20/40WS	135,788.0	lb	20/40	
1,785.1	1,785.1	1,785.1	9	Proppant	40/70 WS	3,411.2	lb	40/70	
1,785.1	1,785.1	1,785.1	Interval 10						
1,785.1	1,785.1	1,785.1	Stg #	Start Date	Top (ftKB)	Btm (ftKB)	Vol Clean...	Vol Slurry...	Comment
1,785.1	1,785.1	1,785.1	10	7/6/2014	11,491.0	11,615.0	2801.40	2954.70	Clearstar 30 XL Gel:1809 bbl; 30# Linear Gel:301 bbl; Slickwater:666 bbl; 15% HCl:26 bbl
1,785.1	1,785.1	1,785.1	Stim/Treat Additives						
1,785.1	1,785.1	1,785.1	Stg #	Add	Type	Amount	Units	Sand Size	
1,785.1	1,785.1	1,785.1	10	Proppant	20/40WS	138,360.0	lb	20/40	
1,785.1	1,785.1	1,785.1	10	Proppant	40/70 WS	4,027.7	lb	40/70	
1,785.1	1,785.1	1,785.1	Interval 11						
1,785.1	1,785.1	1,785.1	Stg #	Start Date	Top (ftKB)	Btm (ftKB)	Vol Clean...	Vol Slurry...	Comment
1,785.1	1,785.1	1,785.1	11	7/7/2014	11,309.0	11,433.0	3006.60	3162.30	Clearstar 30 XL Gel:1801 bbl; 30# Linear Gel:451 bbl; Slickwater:707 bbl; 15% HCl:49 bbl
1,785.1	1,785.1	1,785.1	Stim/Treat Additives						
1,785.1	1,785.1	1,785.1	Stg #	Add	Type	Amount	Units	Sand Size	
1,785.1	1,785.1	1,785.1	11	Proppant	20/40WS	141,222.3	lb	20/40	
1,785.1	1,785.1	1,785.1	11	Proppant	40/70 WS	3,422.1	lb	40/70	
1,785.1	1,785.1	1,785.1	Interval 12						
1,785.1	1,785.1	1,785.1	Stg #	Start Date	Top (ftKB)	Btm (ftKB)	Vol Clean...	Vol Slurry...	Comment
1,785.1	1,785.1	1,785.1	12	7/7/2014	11,127.0	11,240.0	2859.10	3007.10	Clearstar 30 XL Gel:1723 bbl; 30# Linear Gel:451 bbl; Slickwater:661 bbl; 15% HCl:25 bbl
1,785.1	1,785.1	1,785.1	Stim/Treat Additives						
1,785.1	1,785.1	1,785.1	Stg #	Add	Type	Amount	Units	Sand Size	
1,785.1	1,785.1	1,785.1	12	Proppant	20/40WS	133,888.6	lb	20/40	
1,785.1	1,785.1	1,785.1	12	Proppant	40/70 WS	3,598.0	lb	40/70	
1,785.1	1,785.1	1,785.1	Interval 13						
1,785.1	1,785.1	1,785.1	Stg #	Start Date	Top (ftKB)	Btm (ftKB)	Vol Clean...	Vol Slurry...	Comment
1,785.1	1,785.1	1,785.1	13	7/7/2014	10,948.0	11,065.0	2987.20	3148.50	Clearstar 30 XL Gel:1815 bbl; 30# Linear Gel:449 bbl; Slickwater:697 bbl; 15% HCl:26 bbl
1,785.1	1,785.1	1,785.1	Stim/Treat Additives						
1,785.1	1,785.1	1,785.1	Stg #	Add	Type	Amount	Units	Sand Size	
1,785.1	1,785.1	1,785.1	13	Proppant	16/30WS	145,445.5	lb	16/30	
1,785.1	1,785.1	1,785.1	13	Proppant	40/70 WS	4,410.9	lb	40/70	
1,785.1	1,785.1	1,785.1	Interval 14						
1,785.1	1,785.1	1,785.1	Stg #	Start Date	Top (ftKB)	Btm (ftKB)	Vol Clean...	Vol Slurry...	Comment
1,785.1	1,785.1	1,785.1	14	7/7/2014	10,774.0	10,887.0	2852.80	3019.40	Clearstar 30 XL Gel:1819 bbl; 30# Linear Gel:307 bbl; Slickwater:702 bbl; 15% HCl:24 bbl
1,785.1	1,785.1	1,785.1	Stim/Treat Additives						
1,785.1	1,785.1	1,785.1	Stg #	Add	Type	Amount	Units	Sand Size	
1,785.1	1,785.1	1,785.1	14	Proppant	16/30WS	150,655.5	lb	16/30	



Lease Review All - Frac Summary

Well Name: RAZOR FEDERAL 26J-2311A

API Number 051233804100		WPC ID 1CO0761022		Well Permit Number		Field Name DJ Horizontal Niobrara		County Weld		State CO	
Well Configuration Type Lateral/Horizontal		Orig KB Elv (ft) 4,742.60		Ground Elevation (ft) 4,725.60		Casing Flange Elevation (ft)		Tubing Head Elevation (ft)		Total Depth (ftKB) 13,331.0	
Original Spud Date 4/10/2014		Completion Date 7/12/2014		Asset Group Redtail		Responsible Engineer Andrew Fish		N/S Dist (ft) 2,326.0		N/S Ref FSL	
								E/W Dist (ft) 1,914.0		E/W Ref FEL	
Lot		Quarter 1 NW	Quarter 2 SE	Quarter 3	Quarter 4	Section 26	Section Suffix	Section Type	Township 10 N	Township N/S Dir	Range 58 W

Lateral/Horizontal - Original Hole, 12/9/2014 2:54:23 PM			Stim/Treat Additives								
MD (ftKB)	D (ft)	nc (ft)	Vertical schematic (actual)	Logs	Stg #	Add	Type	Amount	Units	Sand Size	
							14	Proppant	40/70 WS	4,124.5	lb
Interval 15											
					Stg #	Start Date	Top (ftKB)	Btm (ftKB)	Vol Clean...	Vol Slurry...	Comment
48.2	48.2	48.2			15	7/7/2014	10,581.0	10,705.0	2867.70	3031.80	Clearstar 30 XL Gel:1829 bbl; 30# Linear Gel:325 bbl; Slickwater:691 bbl; 15% HCl:23 bbl
1,558.1	1,558.1	1,558.1			Stim/Treat Additives						
					Stg #	Add	Type	Amount	Units	Sand Size	
1,785.1	1,785.1	1,785.1			15	Proppant	16/30WS	148,397.8	lb	16/30	
3,513.1	3,513.1	3,513.1			15	Proppant	40/70 WS	4,027.7	lb	40/70	
4,834.6	4,834.6	4,834.6			Interval 16						
					Stg #	Start Date	Top (ftKB)	Btm (ftKB)	Vol Clean...	Vol Slurry...	Comment
4,960.0	4,960.0	4,960.0			16	7/8/2014	10,399.0	10,523.0	2901.70	3052.70	Clearstar 30 XL Gel:1800 bbl; 30# Linear Gel:451 bbl; Slickwater:629 bbl; 15% HCl:21 bbl
5,521.0	5,521.0	5,521.0			Stim/Treat Additives						
					Stg #	Add	Type	Amount	Units	Sand Size	
5,713.9	5,713.9	5,713.9			16	Proppant	16/30WS	136,471.6	lb	16/30	
6,000.7	6,000.7	6,000.7			16	Proppant	40/70 WS	3,749.4	lb	40/70	
6,094.2	6,094.2	6,094.2			Interval 17						
					Stg #	Start Date	Top (ftKB)	Btm (ftKB)	Vol Clean...	Vol Slurry...	Comment
6,268.0	6,268.0	6,268.0			17	7/8/2014	10,217.0	10,341.0	2958.50	3120.10	Clearstar 30 XL Gel:1843 bbl; 30# Linear Gel:451 bbl; Slickwater:640 bbl; 15% HCl:24 bbl
6,397.0	6,397.0	6,397.0			Stim/Treat Additives						
					Stg #	Add	Type	Amount	Units	Sand Size	
6,577.1	6,577.1	6,577.1			17	Proppant	16/30WS	146,594.7	lb	16/30	
6,701.1	6,701.1	6,701.1			17	Proppant	40/70 WS	3,506.6	lb	40/70	
6,880.9	6,880.9	6,880.9			Interval 18						
					Stg #	Start Date	Top (ftKB)	Btm (ftKB)	Vol Clean...	Vol Slurry...	Comment
7,003.9	7,003.9	7,003.9			18	7/8/2014	10,035.0	10,159.0	2775.20	2902.40	Clearstar 30 XL Gel:1662 bbl; 30# Linear Gel:451 bbl; Slickwater:640 bbl; 15% HCl:23 bbl
7,184.1	7,184.1	7,184.1			Stim/Treat Additives						
					Stg #	Add	Type	Amount	Units	Sand Size	
7,307.1	7,307.1	7,307.1			18	Proppant	16/30WS	114,462.1	lb	16/30	
7,486.9	7,486.9	7,486.9			18	Proppant	40/70 WS	3,701.7	lb	40/70	
7,613.8	7,613.8	7,613.8			Interval 19						
					Stg #	Start Date	Top (ftKB)	Btm (ftKB)	Vol Clean...	Vol Slurry...	Comment
7,794.0	7,794.0	7,794.0			19	7/8/2014	9,853.0	9,977.0	2946.00	3104.60	Clearstar 30 XL Gel:1840 bbl; 30# Linear Gel:450 bbl; Slickwater:631 bbl; 15% HCl:24 bbl
7,912.1	7,912.1	7,912.1			Stim/Treat Additives						
					Stg #	Add	Type	Amount	Units	Sand Size	
8,100.1	8,100.1	8,100.1			19	Proppant	16/30WS	143,934.5	lb	16/30	
8,216.9	8,216.9	8,216.9			19	Proppant	40/70 WS	3,340.2	lb	40/70	
8,397.0	8,397.0	8,397.0			Interval 20						
					Stg #	Start Date	Top (ftKB)	Btm (ftKB)	Vol Clean...	Vol Slurry...	Comment
8,521.0	8,521.0	8,521.0			20	7/8/2014	9,671.0	9,795.0	2904.20	3063.60	Clearstar 30 XL Gel:1809 bbl; 30# Linear Gel:441 bbl; Slickwater:631 bbl; 15% HCl:23 bbl
8,701.1	8,701.1	8,701.1			Stim/Treat Additives						
					Stg #	Add	Type	Amount	Units	Sand Size	
8,824.1	8,824.1	8,824.1			20	Proppant	16/30WS	144,735.4	lb	16/30	
9,003.9	9,003.9	9,003.9			20	Proppant	40/70 WS	3,302.1	lb	40/70	
9,127.0	9,127.0	9,127.0			Interval 21						
					Stg #	Start Date	Top (ftKB)	Btm (ftKB)	Vol Clean...	Vol Slurry...	Comment
9,307.1	9,307.1	9,307.1			21	7/8/2014	9,489.0	9,613.0	3046.70	3202.20	Clearstar 30 XL Gel:1801 bbl; 30# Linear Gel:446 bbl; Slickwater:772 bbl; 15% HCl:27 bbl
9,431.1	9,431.1	9,431.1			Stim/Treat Additives						
					Stg #	Add	Type	Amount	Units	Sand Size	
9,610.9	9,610.9	9,610.9			21	Proppant	16/30WS	140,646.9	lb	16/30	
9,724.1	9,724.1	9,724.1			21	Proppant	40/70 WS	3,791.7	lb	40/70	
9,910.1	9,910.1	9,910.1			Interval 22						
					Stg #	Start Date	Top (ftKB)	Btm (ftKB)	Vol Clean...	Vol Slurry...	Comment
10,037.1	10,037.1	10,037.1			22	7/8/2014	9,307.0	9,431.0	2922.60	3088.40	Clearstar 30 XL Gel:1830 bbl; 30# Linear Gel:448 bbl; Slickwater:620 bbl; 15% HCl:26 bbl
10,216.9	10,216.9	10,216.9			Stim/Treat Additives						
					Stg #	Add	Type	Amount	Units	Sand Size	
10,340.9	10,340.9	10,340.9			22	Proppant	16/30WS	151,044.9	lb	16/30	
10,521.0	10,521.0	10,521.0			22	Proppant	40/70 WS	2,970.6	lb	40/70	
10,644.0	10,644.0	10,644.0			Interval 23						
					Stg #	Start Date	Top (ftKB)	Btm (ftKB)	Vol Clean...	Vol Slurry...	Comment
10,824.1	10,824.1	10,824.1			23	7/9/2014	9,125.0	9,249.0	2903.40	3063.80	Clearstar 30 XL Gel:1802 bbl; 30# Linear Gel:444 bbl; Slickwater:634 bbl; 15% HCl:24 bbl
10,950.1	10,950.1	10,950.1			Stim/Treat Additives						
					Stg #	Add	Type	Amount	Units	Sand Size	
11,127.0	11,127.0	11,127.0			23	Proppant	16/30WS	144,925.5	lb	16/30	
11,240.2	11,240.2	11,240.2			23	Proppant	40/70 WS	4,057.7	lb	40/70	
11,431.1	11,431.1	11,431.1			Interval 23						
					Stg #	Start Date	Top (ftKB)	Btm (ftKB)	Vol Clean...	Vol Slurry...	Comment
11,562.0	11,562.0	11,562.0			23	7/9/2014	9,125.0	9,249.0	2903.40	3063.80	Clearstar 30 XL Gel:1802 bbl; 30# Linear Gel:444 bbl; Slickwater:634 bbl; 15% HCl:24 bbl
11,736.9	11,736.9	11,736.9			Stim/Treat Additives						
					Stg #	Add	Type	Amount	Units	Sand Size	
11,872.0	11,872.0	11,872.0			23	Proppant	16/30WS	144,925.5	lb	16/30	
12,048.9	12,048.9	12,048.9			23	Proppant	40/70 WS	4,057.7	lb	40/70	
12,161.1	12,161.1	12,161.1			Interval 23						
					Stg #	Start Date	Top (ftKB)	Btm (ftKB)	Vol Clean...	Vol Slurry...	Comment
12,336.0	12,336.0	12,336.0			23	7/9/2014	9,125.0	9,249.0	2903.40	3063.80	Clearstar 30 XL Gel:1802 bbl; 30# Linear Gel:444 bbl; Slickwater:634 bbl; 15% HCl:24 bbl
12,463.9	12,463.9	12,463.9			Stim/Treat Additives						
					Stg #	Add	Type	Amount	Units	Sand Size	
12,664.0	12,664.0	12,664.0			23	Proppant	16/30WS	144,925.5	lb	16/30	
12,767.1	12,767.1	12,767.1			23	Proppant	40/70 WS	4,057.7	lb	40/70	
12,946.9	12,946.9	12,946.9			Interval 23						
					Stg #	Start Date	Top (ftKB)	Btm (ftKB)	Vol Clean...	Vol Slurry...	Comment
13,070.9	13,070.9	13,070.9			23	7/9/2014	9,125.0	9,249.0	2903.40	3063.80	Clearstar 30 XL Gel:1802 bbl; 30# Linear Gel:444 bbl; Slickwater:634 bbl; 15% HCl:24 bbl
13,158.1	13,158.1	13,158.1			Stim/Treat Additives						
					Stg #	Add	Type	Amount	Units	Sand Size	
13,318.6	13,318.6	13,318.6			23	Proppant	16/30WS	144,925.5	lb	16/30	
					23	Proppant	40/70 WS	4,057.7	lb	40/70	

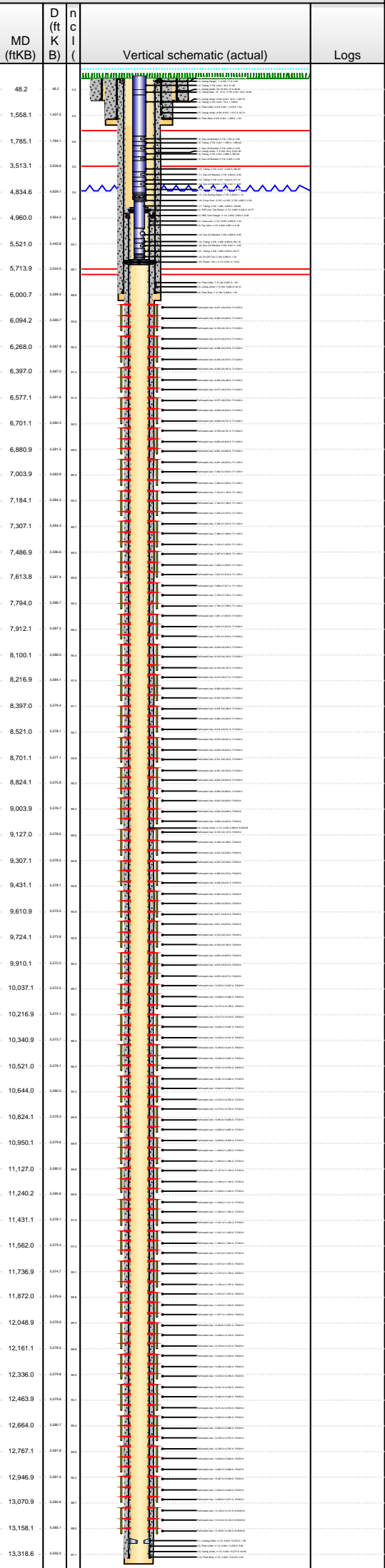


Lease Review All - Frac Summary

Well Name: RAZOR FEDERAL 26J-2311A

API Number 051233804100		WPC ID 1CO0761022		Well Permit Number		Field Name DJ Horizontal Niobrara		County Weld		State CO	
Well Configuration Type Lateral/Horizontal		Orig KB Elv (ft) 4,742.60		Ground Elevation (ft) 4,725.60		Casing Flange Elevation (ft)		Tubing Head Elevation (ft)		Total Depth (ftKB) 13,331.0	
Original Spud Date 4/10/2014		Completion Date 7/12/2014		Asset Group Redtail		Responsible Engineer Andrew Fish		N/S Dist (ft) 2,326.0	N/S Ref FSL	E/W Dist (ft) 1,914.0	E/W Ref FEL
Lot	Quarter 1 NW	Quarter 2 SE	Quarter 3	Quarter 4	Section 26	Section Suffix	Section Type	Township 10 N	Township N/S Dir	Range 58 W	Meridian

Lateral/Horizontal - Original Hole, 12/9/2014 2:54:26 PM



Stim/Treat Stages

Interval 24						
Stg #	Start Date	Top (ftKB)	Btm (ftKB)	Vol Clean...	Vol Slurry...	Comment
24	7/9/2014	8,943.0	9,067.0	2884.10	3043.00	Clearstar 30 XL Gel:1792 bbl; 30# Linear Gel:446 bbl; Slickwater:624 bbl; 15% HCl:23 bbl
Stim/Treat Additives						
Stg #	Add	Type	Amount	Units	Sand Size	
24	Proppant	16/30WS	144,155.1	lb	16/30	
24	Proppant	40/70 WS	3,412.5	lb	40/70	
Interval 25						
Stg #	Start Date	Top (ftKB)	Btm (ftKB)	Vol Clean...	Vol Slurry...	Comment
25	7/9/2014	8,761.0	8,885.0	2880.70	3036.10	Clearstar 30 XL Gel:1769 bbl; 30# Linear Gel:451 bbl; Slickwater:637 bbl; 15% HCl:24 bbl
Stim/Treat Additives						
Stg #	Add	Type	Amount	Units	Sand Size	
25	Proppant	16/30WS	140,246.4	lb	16/30	
25	Proppant	40/70 WS	4,057.7	lb	40/70	
Interval 26						
Stg #	Start Date	Top (ftKB)	Btm (ftKB)	Vol Clean...	Vol Slurry...	Comment
26	7/9/2014	8,579.0	8,703.0	2939.10	3100.00	Clearstar 30 XL Gel:1812 bbl; 30# Linear Gel:445 bbl; Slickwater:682 bbl; 15% HCl:0 bbl
Stim/Treat Additives						
Stg #	Add	Type	Amount	Units	Sand Size	
26	Proppant	16/30WS	146,368.9	lb	16/30	
26	Proppant	40/70 WS	3,119.3	lb	40/70	
Interval 27						
Stg #	Start Date	Top (ftKB)	Btm (ftKB)	Vol Clean...	Vol Slurry...	Comment
27	7/10/2014	8,397.0	8,521.0	2778.40	2938.00	Clearstar 30 XL Gel:1802 bbl; 30# Linear Gel:398 bbl; Slickwater:579 bbl; 15% HCl:0 bbl
Stim/Treat Additives						
Stg #	Add	Type	Amount	Units	Sand Size	
27	Proppant	16/30WS	145,257.5	lb	16/30	
27	Proppant	40/70 WS	3,018.4	lb	40/70	
Interval 28						
Stg #	Start Date	Top (ftKB)	Btm (ftKB)	Vol Clean...	Vol Slurry...	Comment
28	7/10/2014	8,215.0	8,339.0	2848.60	3007.40	Clearstar 30 XL Gel:1793 bbl; 30# Linear Gel:399 bbl; Slickwater:633 bbl; 15% HCl:24 bbl
Stim/Treat Additives						
Stg #	Add	Type	Amount	Units	Sand Size	
28	Proppant	16/30WS	143,334.8	lb	16/30	
28	Proppant	40/70 WS	4,211.8	lb	40/70	
Interval 29						
Stg #	Start Date	Top (ftKB)	Btm (ftKB)	Vol Clean...	Vol Slurry...	Comment
29	7/10/2014	8,033.0	8,157.0	2870.80	3034.20	Clearstar 30 XL Gel:1854 bbl; 30# Linear Gel:402 bbl; Slickwater:591 bbl; 15% HCl:25 bbl
Stim/Treat Additives						
Stg #	Add	Type	Amount	Units	Sand Size	
29	Proppant	16/30WS	147,721.6	lb	16/30	
29	Proppant	40/70 WS	4,039.9	lb	40/70	
Interval 30						
Stg #	Start Date	Top (ftKB)	Btm (ftKB)	Vol Clean...	Vol Slurry...	Comment
30	7/10/2014	7,851.0	7,975.0	2834.50	2995.30	Clearstar 30 XL Gel:1813 bbl; 30# Linear Gel:400 bbl; Slickwater:598 bbl; 15% HCl:23 bbl
Stim/Treat Additives						
Stg #	Add	Type	Amount	Units	Sand Size	
30	Proppant	16/30WS	145,584.4	lb	16/30	
30	Proppant	40/70 WS	3,772.6	lb	40/70	
Interval 31						
Stg #	Start Date	Top (ftKB)	Btm (ftKB)	Vol Clean...	Vol Slurry...	Comment
31	7/11/2014	7,669.0	7,796.0	2904.20	3066.80	Clearstar 30 XL Gel:1802 bbl; 30# Linear Gel:450 bbl; Slickwater:625 bbl; 15% HCl:27 bbl
Stim/Treat Additives						
Stg #	Add	Type	Amount	Units	Sand Size	
31	Proppant	16/30WS	147,569.3	lb	16/30	
31	Proppant	40/70 WS	3,418.0	lb	40/70	
Interval 32						
Stg #	Start Date	Top (ftKB)	Btm (ftKB)	Vol Clean...	Vol Slurry...	Comment
32	7/11/2014	7,487.0	7,614.0	2669.20	2817.60	Clearstar 30 XL Gel:1730 bbl; 30# Linear Gel:299 bbl; Slickwater:617 bbl; 15% HCl:23 bbl
Stim/Treat Additives						
Stg #	Add	Type	Amount	Units	Sand Size	
32	Proppant	16/30WS	134,346.6	lb	16/30	
32	Proppant	40/70 WS	3,452.1	lb	40/70	

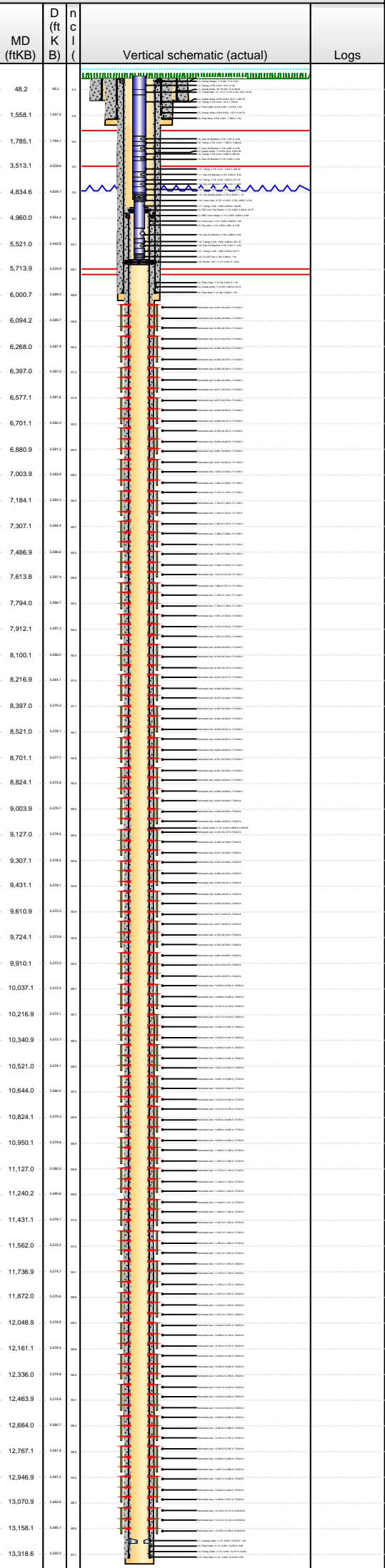


Lease Review All - Frac Summary

Well Name: RAZOR FEDERAL 26J-2311A

API Number 051233804100		WPC ID 1CO0761022		Well Permit Number		Field Name DJ Horizontal Niobrara		County Weld		State CO	
Well Configuration Type Lateral/Horizontal		Orig KB Elv (ft) 4,742.60		Ground Elevation (ft) 4,725.60		Casing Flange Elevation (ft)		Tubing Head Elevation (ft)		Total Depth (ftKB) 13,331.0	
Original Spud Date 4/10/2014		Completion Date 7/12/2014		Asset Group Redtail		Responsible Engineer Andrew Fish		N/S Dist (ft) 2,326.0		N/S Ref FSL	
E/W Dist (ft) 1,914.0		E/W Ref FEL		Lot		Quarter 1 NW		Quarter 2 SE		Quarter 3	
Quarter 4		Section 26		Section Suffix		Section Type		Township 10 N		Township N/S Dir	
Range 58		Range E/W Dir		Meridian							

Lateral/Horizontal - Original Hole, 12/9/2014 2:54:28 PM



Stim/Treat Stages

Interval 33						
Stg #	Start Date	Top (ftKB)	Btm (ftKB)	Vol Clean...	Vol Slurry...	Comment
33	7/11/2014	7,305.0	7,420.0	2756.10	2920.60	Clearstar 30 XL Gel:1765 bbl; 30# Linear Gel:332 bbl; Slickwater:634 bbl; 15% HCl:25 bbl
Stim/Treat Additives						
Stg #	Add	Type	Amount	Units	Sand Size	
33	Proppant	16/30WS	149,696.3	lb	16/30	
33	Proppant	40/70 WS	3,102.9	lb	40/70	
Interval 34						
Stg #	Start Date	Top (ftKB)	Btm (ftKB)	Vol Clean...	Vol Slurry...	Comment
34	7/11/2014	7,123.0	7,247.0	2868.10	3026.10	Clearstar 30 XL Gel:1855 bbl; 30# Linear Gel:399 bbl; Slickwater:588 bbl; 15% HCl:26 bbl
Stim/Treat Additives						
Stg #	Add	Type	Amount	Units	Sand Size	
34	Proppant	16/30WS	142,801.5	lb	16/30	
34	Proppant	40/70 WS	3,922.6	lb	40/70	
Interval 35						
Stg #	Start Date	Top (ftKB)	Btm (ftKB)	Vol Clean...	Vol Slurry...	Comment
35	7/11/2014	6,941.0	7,065.0	2818.70	2977.70	Clearstar 30 XL Gel:1784 bbl; 30# Linear Gel:400 bbl; Slickwater:611 bbl; 15% HCl:24 bbl
Stim/Treat Additives						
Stg #	Add	Type	Amount	Units	Sand Size	
35	Proppant	16/30WS	144,298.1	lb	16/30	
35	Proppant	40/70 WS	3,378.4	lb	40/70	
Interval 36						
Stg #	Start Date	Top (ftKB)	Btm (ftKB)	Vol Clean...	Vol Slurry...	Comment
36	7/11/2014	6,759.0	6,883.0	2802.00	2961.20	Clearstar 30 XL Gel:1796 bbl; 30# Linear Gel:396 bbl; Slickwater:586 bbl; 15% HCl:23 bbl
Stim/Treat Additives						
Stg #	Add	Type	Amount	Units	Sand Size	
36	Proppant	16/30WS	143,898.7	lb	16/30	
36	Proppant	40/70 WS	3,994.9	lb	40/70	
Interval 37						
Stg #	Start Date	Top (ftKB)	Btm (ftKB)	Vol Clean...	Vol Slurry...	Comment
37	7/12/2014	6,577.0	6,701.0	2685.90	2842.80	Clearstar 30 XL Gel:1766 bbl; 30# Linear Gel:297 bbl; Slickwater:600v; 15% HCl:23 bbl
Stim/Treat Additives						
Stg #	Add	Type	Amount	Units	Sand Size	
37	Proppant	16/30WS	142,072.0	lb	16/30	
37	Proppant	40/70 WS	3,693.5	lb	40/70	
Interval 38						
Stg #	Start Date	Top (ftKB)	Btm (ftKB)	Vol Clean...	Vol Slurry...	Comment
38	7/12/2014	6,395.0	6,519.0	2664.70	2822.40	Clearstar 30 XL Gel:1788 bbl; 30# Linear Gel:303 bbl; Slickwater:573 bbl; 15% HCl:0 bbl
Stim/Treat Additives						
Stg #	Add	Type	Amount	Units	Sand Size	
38	Proppant	16/30WS	142,894.5	lb	16/30	
38	Proppant	40/70 WS	3,587.1	lb	40/70	
Interval 39						
Stg #	Start Date	Top (ftKB)	Btm (ftKB)	Vol Clean...	Vol Slurry...	Comment
39	7/12/2014	6,213.0	6,337.0	2604.20	2757.30	Clearstar 30 XL Gel:1742 bbl; 30# Linear Gel:297 bbl; Slickwater:565 bbl; 15% HCl:0 bbl
Stim/Treat Additives						
Stg #	Add	Type	Amount	Units	Sand Size	
39	Proppant	16/30WS	138,438.1	lb	16/30	
39	Proppant	40/70 WS	3,769.9	lb	40/70	
Interval 40						
Stg #	Start Date	Top (ftKB)	Btm (ftKB)	Vol Clean...	Vol Slurry...	Comment
40	7/12/2014	6,031.0	6,161.0	2569.00	2715.50	Clearstar 30 XL Gel:1714 bbl; 30# Linear Gel:305 bbl; Slickwater:549 bbl; 15% HCl:0 bbl
Stim/Treat Additives						
Stg #	Add	Type	Amount	Units	Sand Size	
40	Proppant	16/30WS	132,242.1	lb	16/30	
40	Proppant	40/70 WS	3,854.4	lb	40/70	
Tubing - Production set at 5,601.3ftKB on 8/23/2014 17:00						
Set Depth (ftKB)	Comment	Run Date	Pull Date			
5,601.3		8/23/2014				
Item Des	OD (in)	ID (in)	Len (ft)	Top (ftKB)	Btm (ftKB)	
KB			16.00	0.5	16.5	
Tubing	2 7/8	2.441	31.85	16.5	48.4	
Tubing Subs 10', 10', 4'	2 7/8	2.441	24.00	48.4	72.4	
Tubing	2 7/8	2.441	1,708.61	72.4	1,781.0	
Gas Lift Mandrel	2 7/8		4.05	1,781.0	1,785.0	
Tubing	2 7/8	2.441	1,096.20	1,785.0	2,881.2	



Lease Review All - Frac Summary

Well Name: RAZOR FEDERAL 26J-2311A

API Number 051233804100		WPC ID 1CO0761022		Well Permit Number		Field Name DJ Horizontal Niobrara		County Weld		State CO	
Well Configuration Type Lateral/Horizontal		Orig KB Elv (ft) 4,742.60		Ground Elevation (ft) 4,725.60		Casing Flange Elevation (ft)		Tubing Head Elevation (ft)		Total Depth (ftKB) 13,331.0	
Original Spud Date 4/10/2014		Completion Date 7/12/2014		Asset Group Redtail		Responsible Engineer Andrew Fish		N/S Dist (ft) 2,326.0		E/W Dist (ft) 1,914.0	
Lot		Quarter 1 NW		Quarter 2 SE		Quarter 3		Quarter 4		Section 26	
		Section Suffix		Section Type		Township 10 N		Township N/S Dir N		Range 58 W	

Lateral/Horizontal - Original Hole, 12/9/2014 2:54:30 PM

MD (ftKB)	D (ft K B)	n c l ()	Item Des	OD (in)	ID (in)	Len (ft)	Top (ftKB)	Btm (ftKB)
			Gas Lift Mandrel	2 7/8		4.05	2,881.2	2,885.3
			Tubing	2 7/8	2.441	550.09	2,885.3	3,435.4
			Gas Lift Mandrel	2 7/8		4.05	3,435.4	3,439.4
			Tubing	2 7/8	2.441	480.82	3,439.4	3,920.2
			Gas Lift Mandrel	2 7/8		4.05	3,920.2	3,924.3
			Tubing	2 7/8	2.441	517.41	3,924.3	4,441.7
			Gas Lift Mandrel	2 7/8		4.05	4,441.7	4,445.7
			Tubing	2 7/8	2.441	388.86	4,445.7	4,834.6
			Cup Seating Nipple	2 7/8		1.10	4,834.6	4,835.7
			Cross Over 2-7/8" x 2-3/8"	2 7/8		0.50	4,835.7	4,836.2
			Tubing	2 3/8	1.995	129.68	4,836.2	4,965.9
			Gas Lift Mandrel	2 3/8		4.05	4,965.9	4,969.9
			Tubing	2 3/8	1.995	551.19	4,969.9	5,521.1
			Gas Lift Mandrel	2 3/8		4.05	5,521.1	5,525.2
			Tubing	2 3/8	1.995	64.77	5,525.2	5,589.9
			On-Off Tool	2 3/8		1.34	5,589.9	5,591.3
			Packer AS-1	4 1/2		10.00	5,591.3	5,601.3

Rod Strings

<des> on <dtmrun>

Item Des	Run Date	Pull Date

Item Des	OD (in)	Len (ft)	Top (ftKB)	Btm (ftKB)

Other Strings

Set Depth (ftKB)	Comment	Run Date	Pull Date

Item Des	OD (in)	Len (ft)	Top (ftKB)	Btm (ftKB)

Other In Hole

Des	OD (in)	Run Date	Pull Date	Top (ftKB)	Btm (ftKB)
CFP	4	7/12/2014	8/21/2014	6,180.0	6,182.0
CFP	4	7/12/2014	8/21/2014	6,356.0	6,358.0
CFP	4	7/12/2014	8/21/2014	6,536.0	6,538.0
CFP	4	7/12/2014	8/21/2014	6,729.0	6,731.0
CFP	4	7/12/2014	8/21/2014	6,911.0	6,913.0
CFP	4	7/11/2014	8/21/2014	7,093.0	7,095.0
CFP	4	7/11/2014	8/21/2014	7,275.0	7,277.0
CFP	4	7/11/2014	8/21/2014	7,457.0	7,459.0
CFP	4	7/11/2014	8/21/2014	7,639.0	7,641.0
CFP	4	7/11/2014	8/21/2014	7,820.0	7,822.0
CFP	4	7/10/2014	8/21/2014	7,998.0	8,000.0
CFP	4	7/10/2014	8/21/2014	8,172.0	8,174.0
CFP	4	7/10/2014	8/21/2014	8,372.0	8,374.0
CFP	4	7/10/2014	8/21/2014	8,549.0	8,551.0
CFP	4	7/10/2014	8/21/2014	8,731.0	8,733.0
CFP	4	7/10/2014	8/21/2014	8,913.0	8,915.0
CFP	4	7/9/2014	8/21/2014	9,095.0	9,097.0
CFP	4	7/9/2014	8/21/2014	9,277.0	9,279.0
CFP	4	7/9/2014	8/21/2014	9,459.0	9,461.0
CFP	4	7/8/2014	8/22/2014	9,641.0	9,643.0
CFP	4	7/8/2014	8/22/2014	9,823.0	9,825.0
CFP	4	7/8/2014	8/22/2014	9,999.0	10,001.0
CFP	4	7/8/2014	8/22/2014	10,178.0	10,180.0
CFP	4	7/8/2014	8/22/2014	10,372.0	10,374.0
CFP	4	7/8/2014	8/22/2014	10,551.0	10,553.0
CFP	4	7/7/2014	8/22/2014	10,733.0	10,735.0
CFP	4	7/7/2014	8/22/2014	10,915.0	10,917.0
CFP	4	7/7/2014	8/22/2014	11,097.0	11,099.0
CFP	4	7/7/2014	8/22/2014	11,274.0	11,276.0
CFP	4	7/7/2014	8/22/2014	11,448.0	11,450.0
CFP	4	7/7/2014	8/22/2014	11,645.0	11,647.0
CFP	4	7/6/2014	8/22/2014	11,825.0	11,827.0
CFP	4	7/6/2014	8/22/2014	12,007.0	12,009.0
CFP	4	7/6/2014	8/22/2014	12,189.0	12,191.0
CFP	4	7/6/2014	8/22/2014	12,371.0	12,373.0
CFP	4	7/6/2014	8/22/2014	12,553.0	12,555.0
CFP	4	7/5/2014	8/22/2014	12,735.0	12,737.0
CFP	4	7/5/2014	8/22/2014	12,912.0	12,914.0
CFP	4	7/5/2014	8/22/2014	13,088.0	13,090.0

Bottom Hole Cores

Date	Core #	Top (ftKB)	Btm (ftKB)	Recov (ft)

