



FILE NO:  
83012  
API NO:  
05-121-11041

COMPANY  
BAYSWATER EXPLORATION & PRODUCTION  
WELL  
CRAIG #44-18  
FIELD  
WILDCAT  
COUNTY  
WASHINGTON  
STATE  
COLORADO

Ver. 3.87

LOCATION:

SHL: 1110' FSL & 962' FEL

SEC 18 TWP 4S RGE 49W

OTHER SERVICES  
HDIL  
DAL  
ZDL-CN

PERMANENT DATUM  
LOG MEASURED FROM  
DRILL. MEAS. FROM  
GL  
ELEVATION  
4490 FT  
KB  
12 FT  
ABOVE P.D.  
KB

ELEVATIONS:  
KB  
4502 FT  
DF  
GL  
4490 FT

DATE	04-Mar-2014
RUN	1
TRIP	1
SERVICE ORDER	US647714
DEPTH DRILLER	3803 FT
DEPTH LOGGER	3795 FT
BOTTOM LOGGED INTERVAL	3731 FT
TOP LOGGED INTERVAL	220 FT
CASING DRILLER	8.625 IN @ 212 FT
CASING LOGGER	220 FT
BIT SIZE	7.875 IN
TYPE OF FLUID IN HOLE	WBM
DENSITY	8.7 LB/G
VISCOSITY	44 CP
PH	10
FLUID LOSS	7.2 C3
SOURCE OF SAMPLE	FLOWLINE
RM AT MEAS. TEMP.	0.49 OHMM @ 72 DEGF
RM AT MEAS. TEMP.	0.39 OHMM @ 71 DEGF
RM AT MEAS. TEMP.	0.58 OHMM @ 70 DEGF
SOURCE OF RMF	MEASURED
RM AT BHT	0.30 OHMM @ 121 DEGF
TIME SINCE CIRCULATION	4.5 HOURS
MAX. RECORDED TEMP.	121 DEGF
EQUIP. NO.	HL 6670
LOCATION	GRND JCT
RECORDED BY	L KOCH
WITNESSED BY	D. BRUGMANR. TALKINGTO

IN MAKING INTERPRETATIONS OF LOGS OUR EMPLOYEES WILL GIVE THE CUSTOMER THE BENEFIT OF THEIR BEST JUDGEMENT. BUT SINCE ALL INTERPRETATIONS ARE OPINIONS BASED ON INFERENCES FROM ELECTRICAL OR OTHER MEASUREMENTS, WE CANNOT, AND WE DO NOT GUARANTEE THE ACCURACY OR CORRECTNESS OF ANY INTERPRETATION. WE SHALL NOT BE LIABLE OR RESPONSIBLE FOR ANY LOSS, COST, DAMAGES, OR EXPENSES WHATSOEVER INCURRED OR SUSTAINED BY THE CUSTOMER RESULTING FROM ANY INTERPRETATION MADE BY ANY OF OUR EMPLOYEES.

#### REMARKS

RUN 1 TRIP 1: HDIL-DAL-ML-ZDL-CN-GR RUN IN COMBINATION

LAST CIRCULATED ON 4-MAR-2014 @ 11:00  
MAIN LOG OFF BOTTOM ON 4-MAR-2014 @ 15:30

BVOL AND CVOL PRESENTED IN CUBIC FEET  
CVOL CALCULATED USING 4.5" CASING  
CALIPER VERIFIED IN CASING

THANK YOU FOR CHOOSING BAKER HUGHES WIRELINE  
RIG: EXCELL RIG #3  
CREW: J. MORTON/S. HOLLAR/C. COATE

#### EQUIPMENT DATA

RUN	TRIP	TOOL	SERIES NO.	SERIAL NO.	POSITION
1	1	DHPA	4430XB	10161076	FREE
1	1	TIRM	3981XA	10107066	FREE

1	1	WTS	3514XA	10195429	FREE
1	1	DSL	1329XA	10330272	DECENTRALIZED
1	1	CN	2246XA	10068420	DECENTRALIZED
1	1	ZDL	2234XA	10415656	PAD DEVICE - DECENT
1	1	KNJT	3939XA	12396931	FREE
1	1	ML	1243XA	11756187	FREE
1	1	DAL	1677EA/1680MA	117160/172759	CENTRALIZED
1	1	CENT	4341XA	121550	CENTRALIZED
1	1	HDIL	1515EA/1515MA	10326306/364355	STOOD OFF

## MAIN LOG 5"/100FT SCALE

ECLIPS 6.2i ECLIPS General Release Rel 6.2i Wed Jun 12 12:21:40 CDT 2013

Updates: 31 Patches: 5

Plotted: Tue Mar 4 17:45:15 2014

### PARAMETER AND FILTER SUMMARY REPORT

FILE: /dat1a/083012/n777102.prm  
 LOGGING MODE: DEPTH DIRECTION: UP  
 TOP DEPTH: 72.222 ft BOTTOM DEPTH: 3614.181 ft

#### SYMMETRIC FILTER

MEASUREMENT TYPE	PARAMETER	VALUE	UNITS	INTERVAL (ft)	
TTRM	FILTER (j)	medium (1)		TOP	BOTTOM
	FILTER (.h)	medium (1)		"	"
	FILTER (.i)	medium (1)		"	"
TENSION	FILTER (j)	medium (1)		"	"
GR	FILTER (j)	medium (1)		"	"
ML	FILTER (j)	light (2a)		"	"

#### BOREHOLE & CEMENT

MEASUREMENT TYPE	PARAMETER	VALUE	UNITS	INTERVAL (ft)	
CASING - BOREHOLE & CEMENT VOLUME	CASING O.D.	4.500	in	TOP	BOTTOM
X-Y COMBINED CALIPER PROCESSING	X-Y Caliper	X-Axis		"	"
BIT SIZE	BIT SIZE	7.875	in	"	"
MUD SAMPLE RESISTIVITY	MUD SAMPLE TEMP	72.0	degF	"	"
	MUD SAMPLE RES	0.490	ohm.m	"	"
BOREHOLE TEMP from GRADIENT	Known BH REF TEMP	77.0	degF	"	"
	at BH REF DEPTH	0.0	ft	"	"
	with TEMP GRADIENT	1.200	0.01 degF/ft	"	"
BOREHOLE CORR DIAMETER SOURCE	CALIPER/FIXED DIA. (calml*)	USE CALIPER		"	"
BH MUD RESISTIVITY SOURCE	RMUD SOURCE	TOOL MEASURED		"	"

#### ML PARMS

MEASUREMENT TYPE	PARAMETER	VALUE	UNITS	INTERVAL (ft)	
ML BOREHOLE CORRECTION	BOREHOLE CORR	ON		TOP	BOTTOM

### CURVE DESCRIPTION REPORT

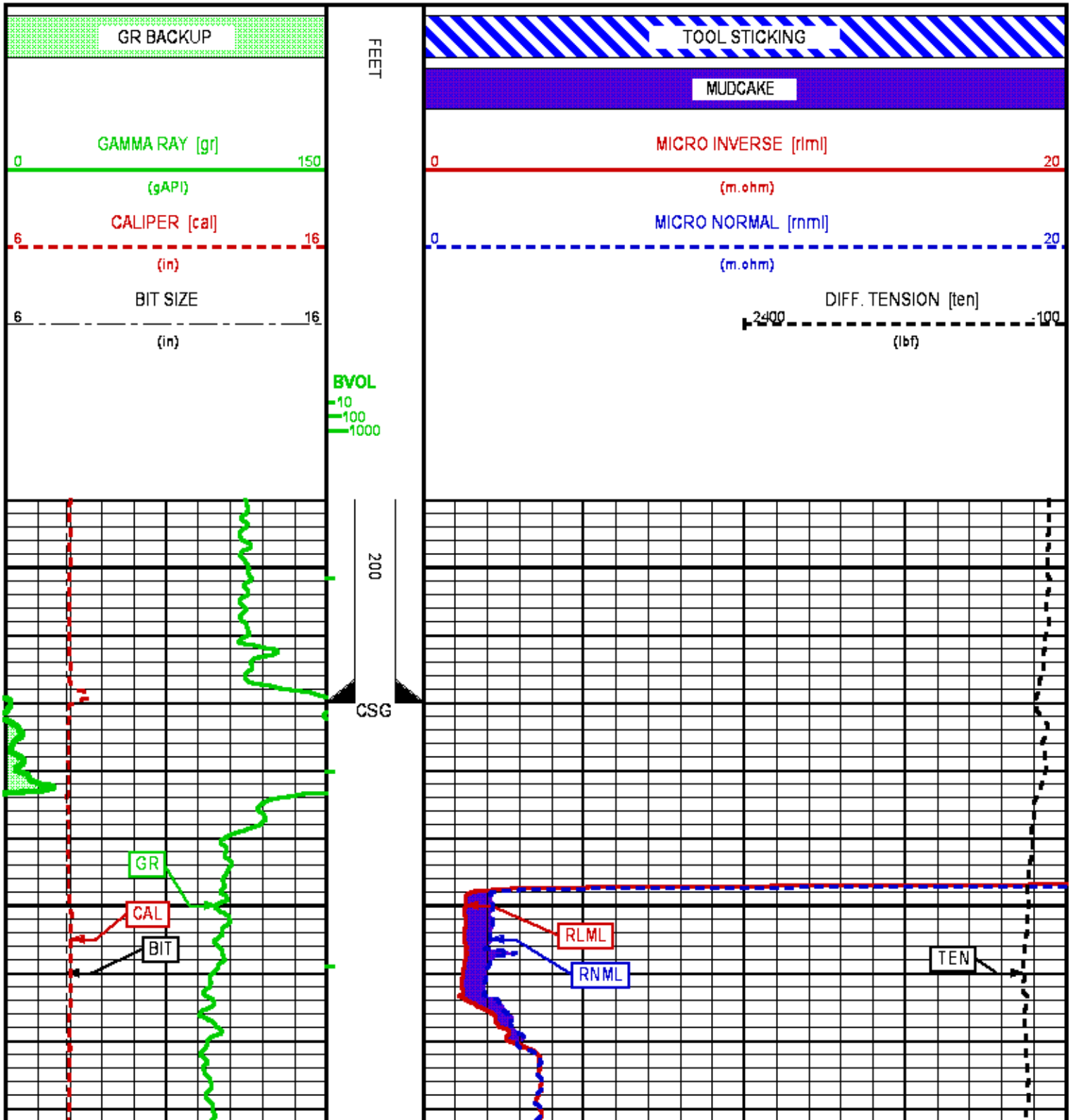
CURVE NAME	CREATION DATE	CURVE DESCRIPTION
F1:BIT	Mar 4 15:21:39 2014	BIT SIZE
F1:BVOL	Mar 4 15:21:39 2014	BOREHOLE VOLUME
F1:CAL	Mar 4 15:21:39 2014	CALIPER
F1:GR	Mar 4 15:21:39 2014	GAMMA RAY
F1:RLML	Mar 4 15:21:39 2014	1-INCH LATERAL RESISTIVITY
F1:RNML	Mar 4 15:21:39 2014	2-INCH NORMAL RESISTIVITY
F1:TEN	Mar 4 15:21:39 2014	DIFFERENTIAL TENSION

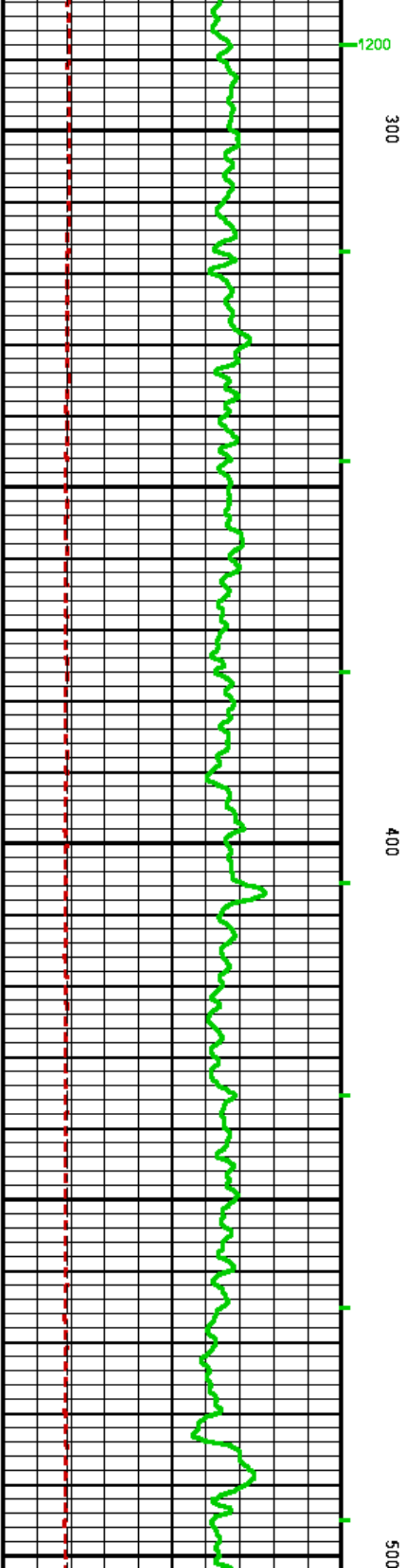
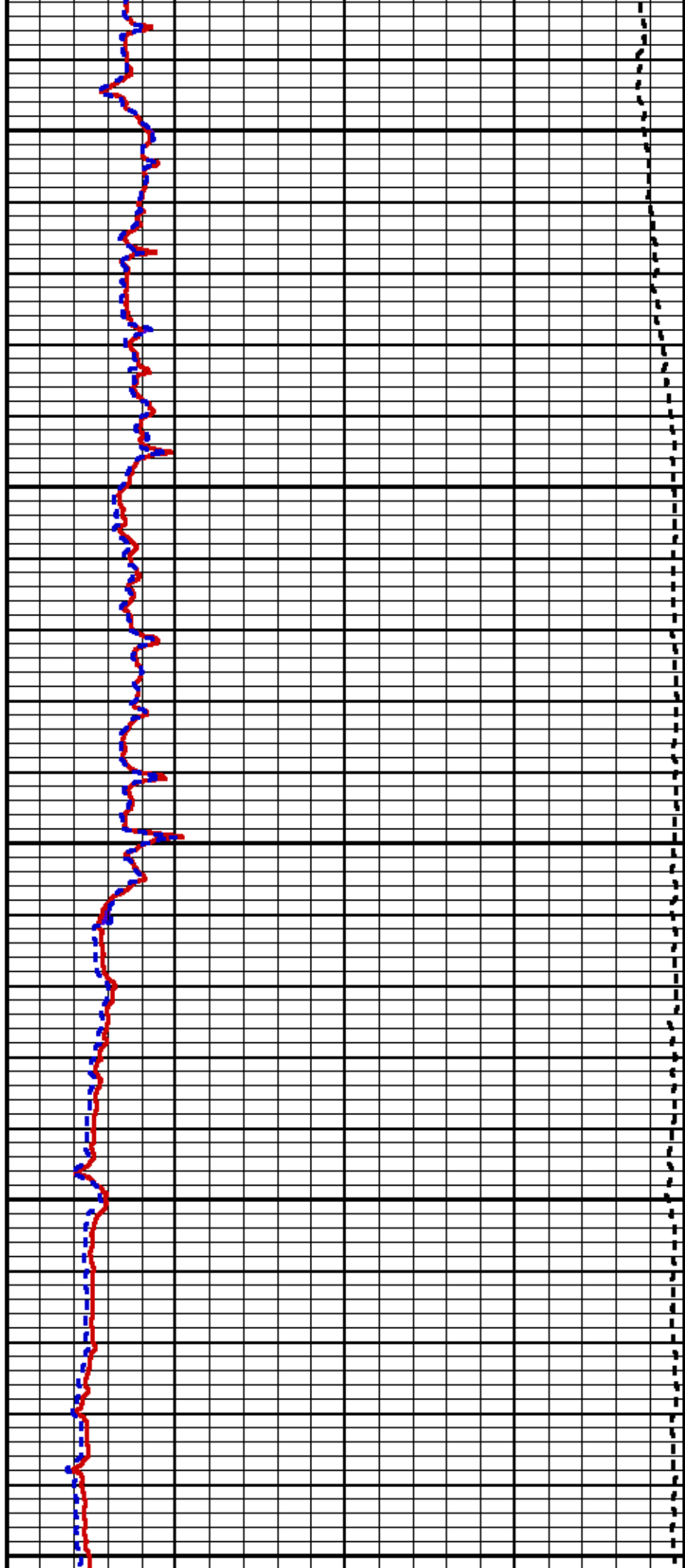
# CURVE MEASURE POINT OFFSET

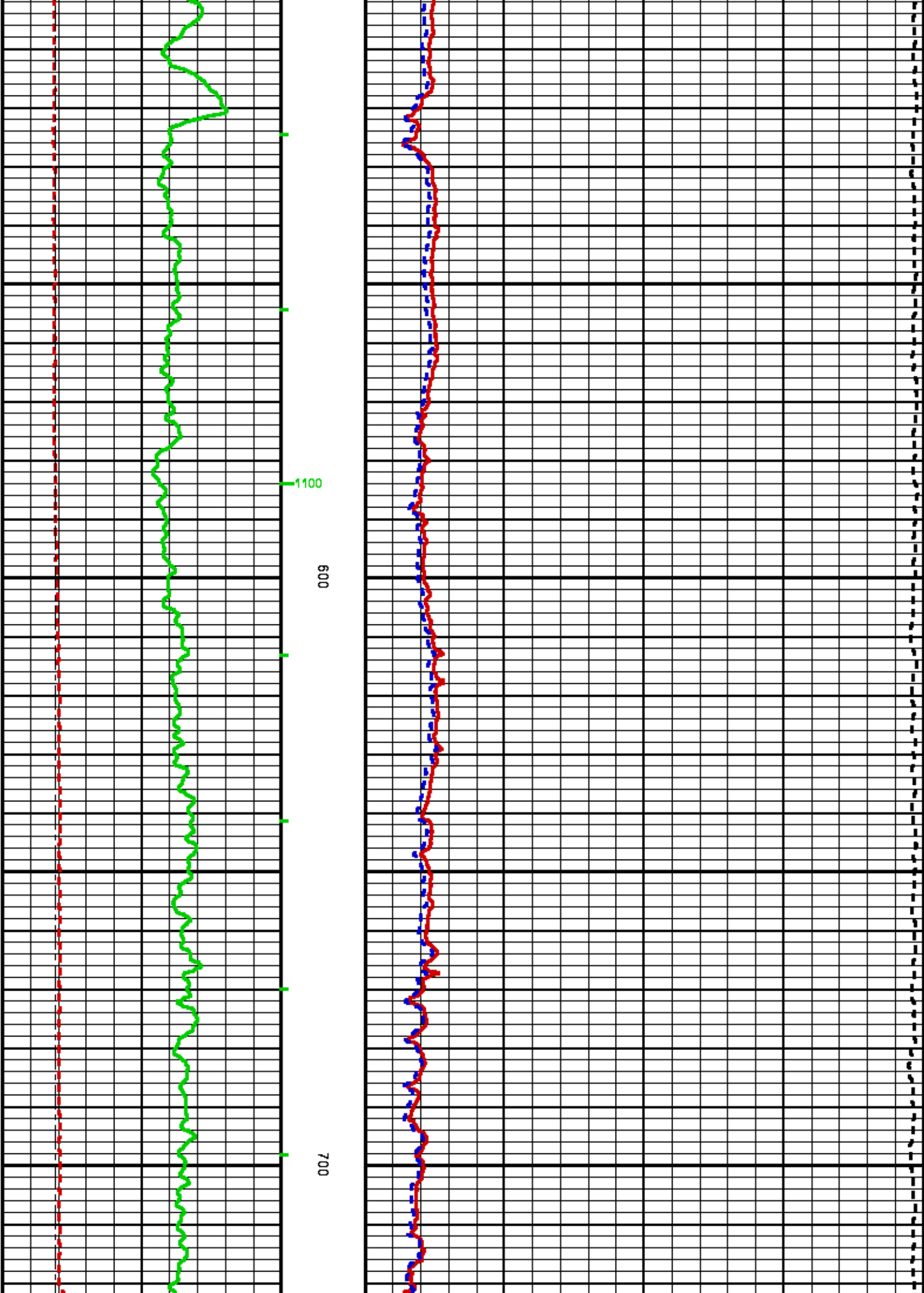
CURVE	OFFSET (ft)	CURVE	OFFSET (ft)	CURVE	OFFSET (ft)	CURVE	OFFSET (ft)
BIT	0.00	GR	88.12	RNML	53.25		
CAL	53.25	RLML	53.25	TEN	0.00		

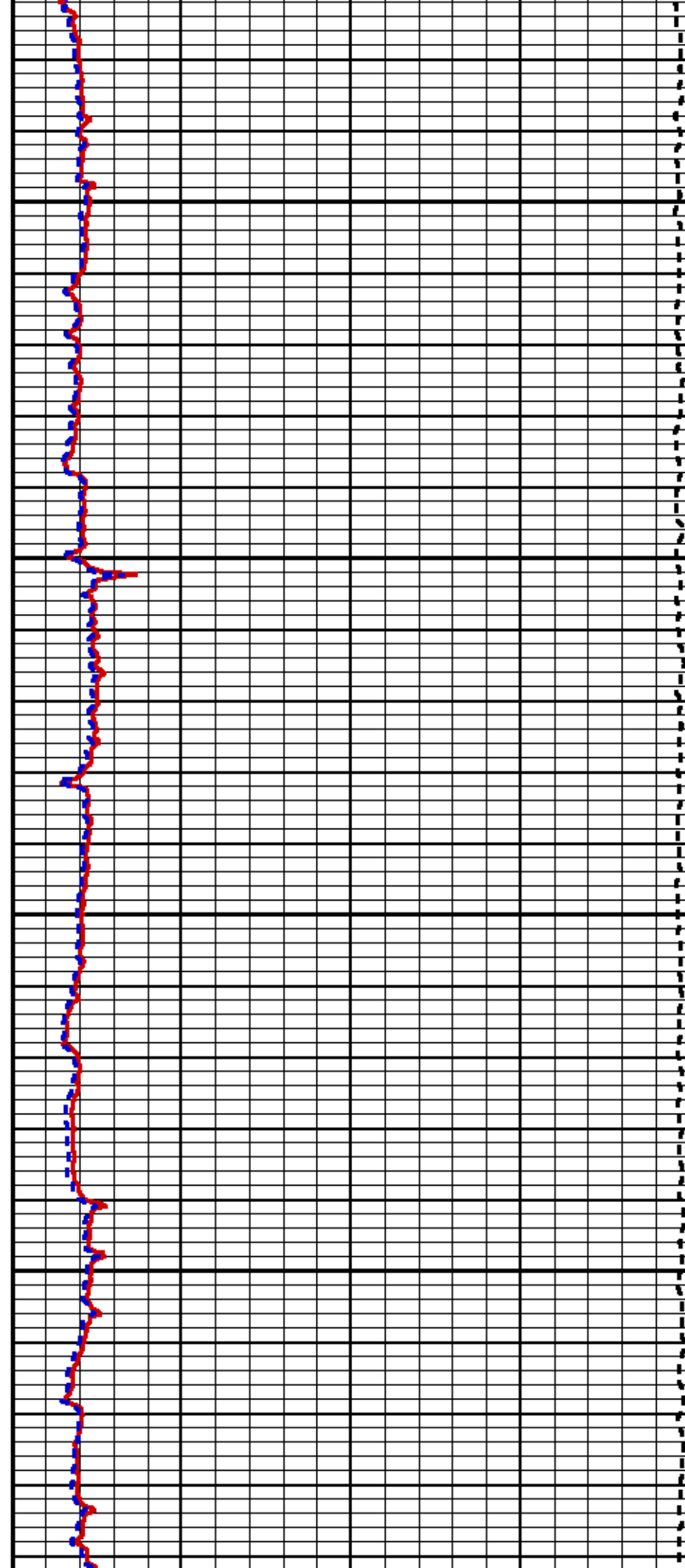
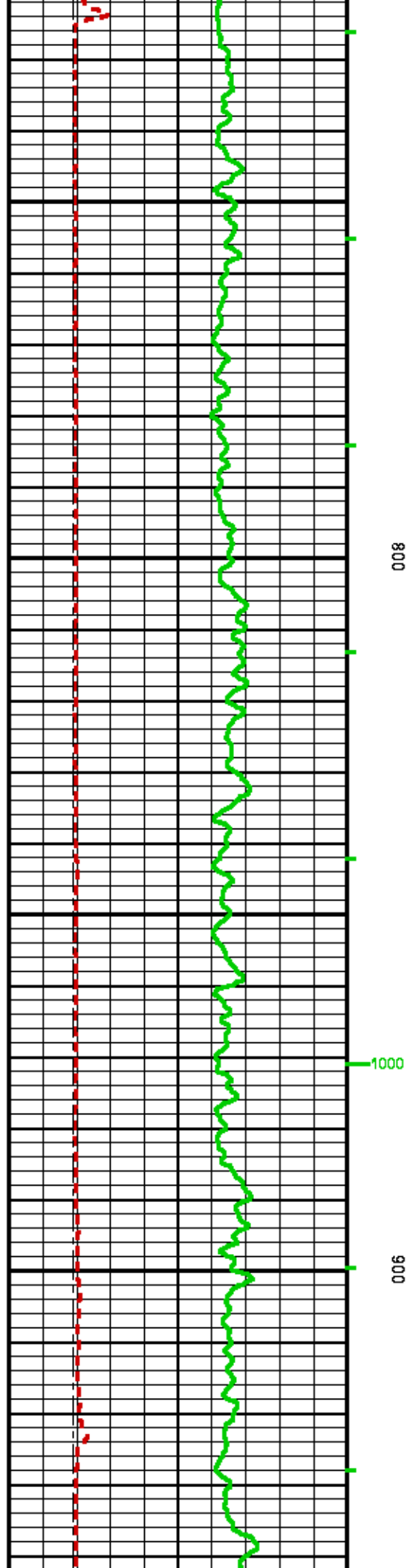
Presentation : HL6670:/dat1a/083012/ml\_MAIN.fvpdf [5"/100' Scale]  
 Plot Interval : 190 - 3814.25 Feet

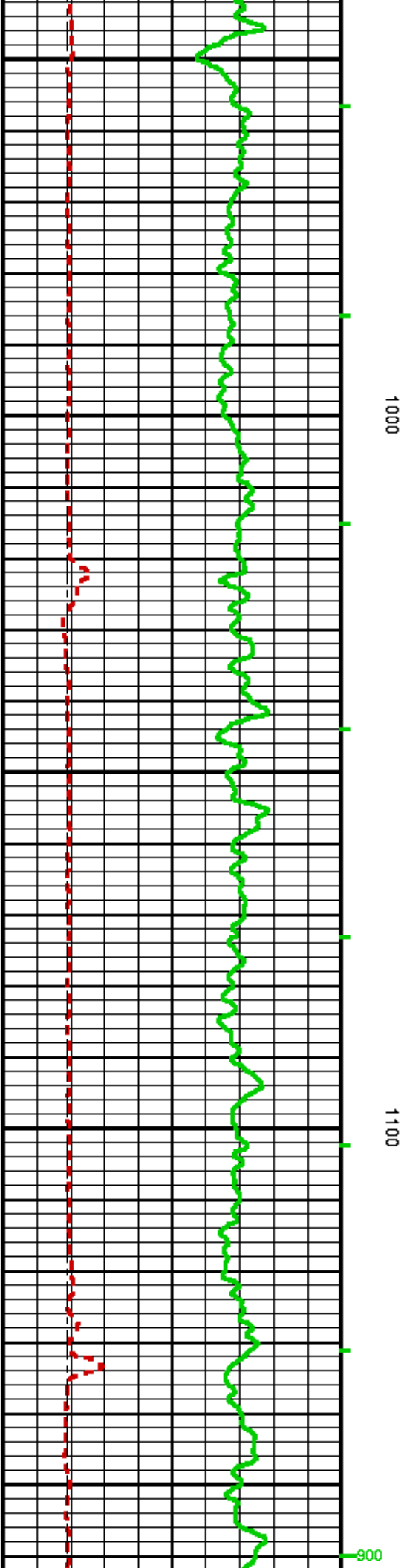
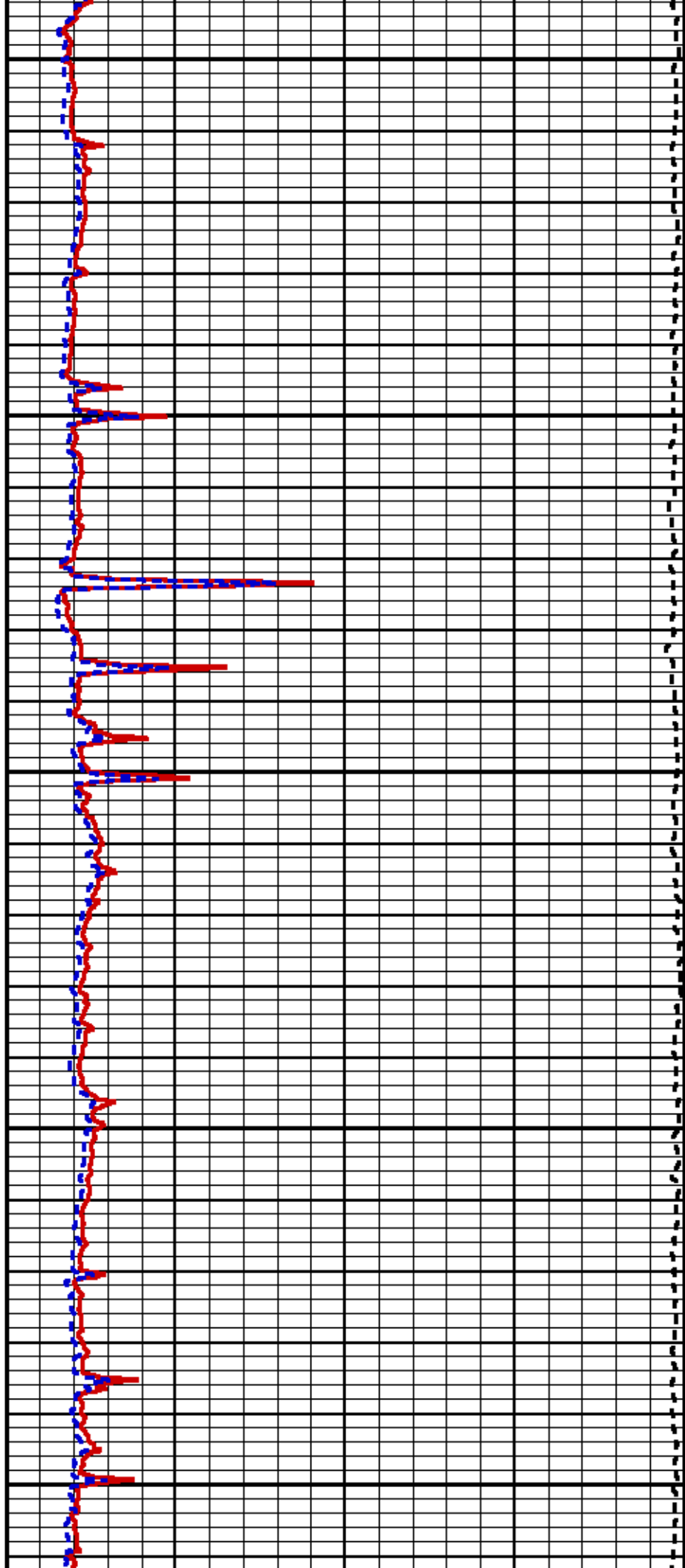
Data File 1 : F1 : HL6670:/dat1a/083012/MAIN.xtf  
 Created On : Mar 4 15:21:39 2014  
 Company : BAYSWATER EXPLORATOIN AND PRODUCTION  
 Well : CRAIG #44-18  
 Field : WILDCAT  
 File Interval : -28.25 - 3814.25 Feet  
 OCT : n777I

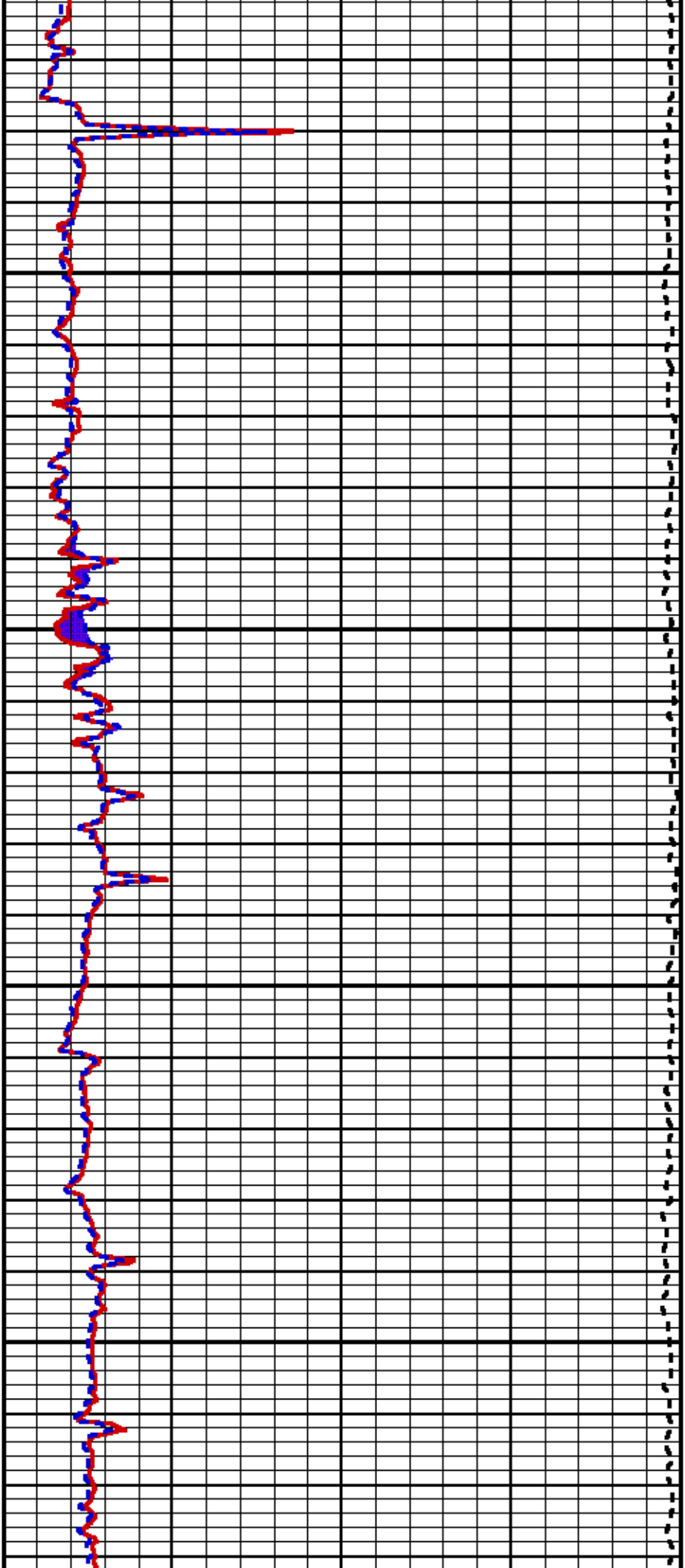






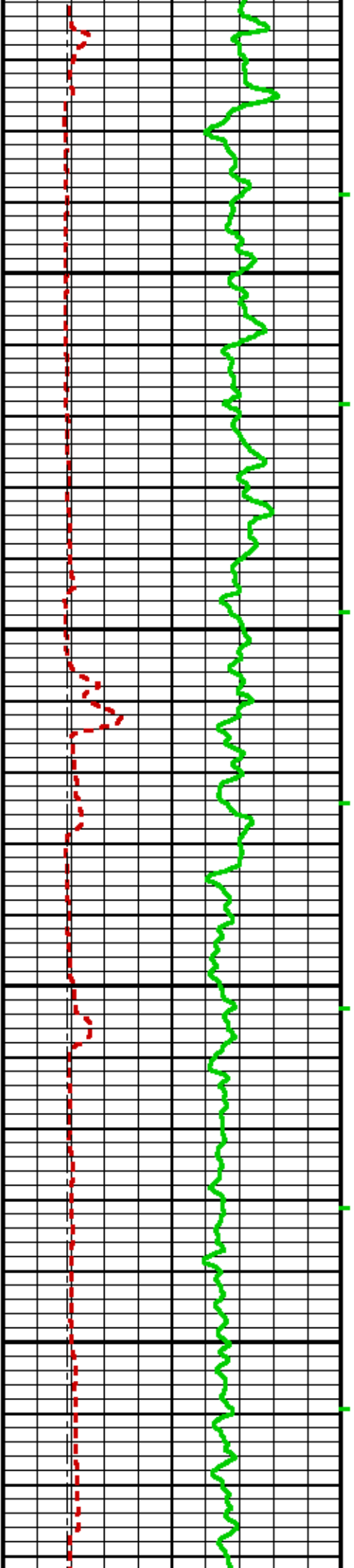




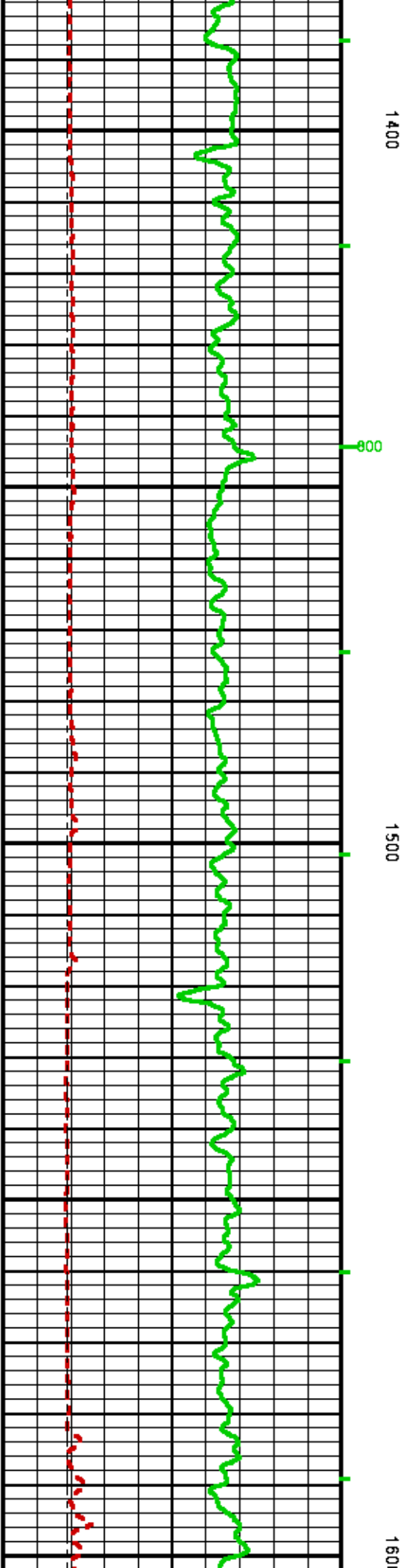
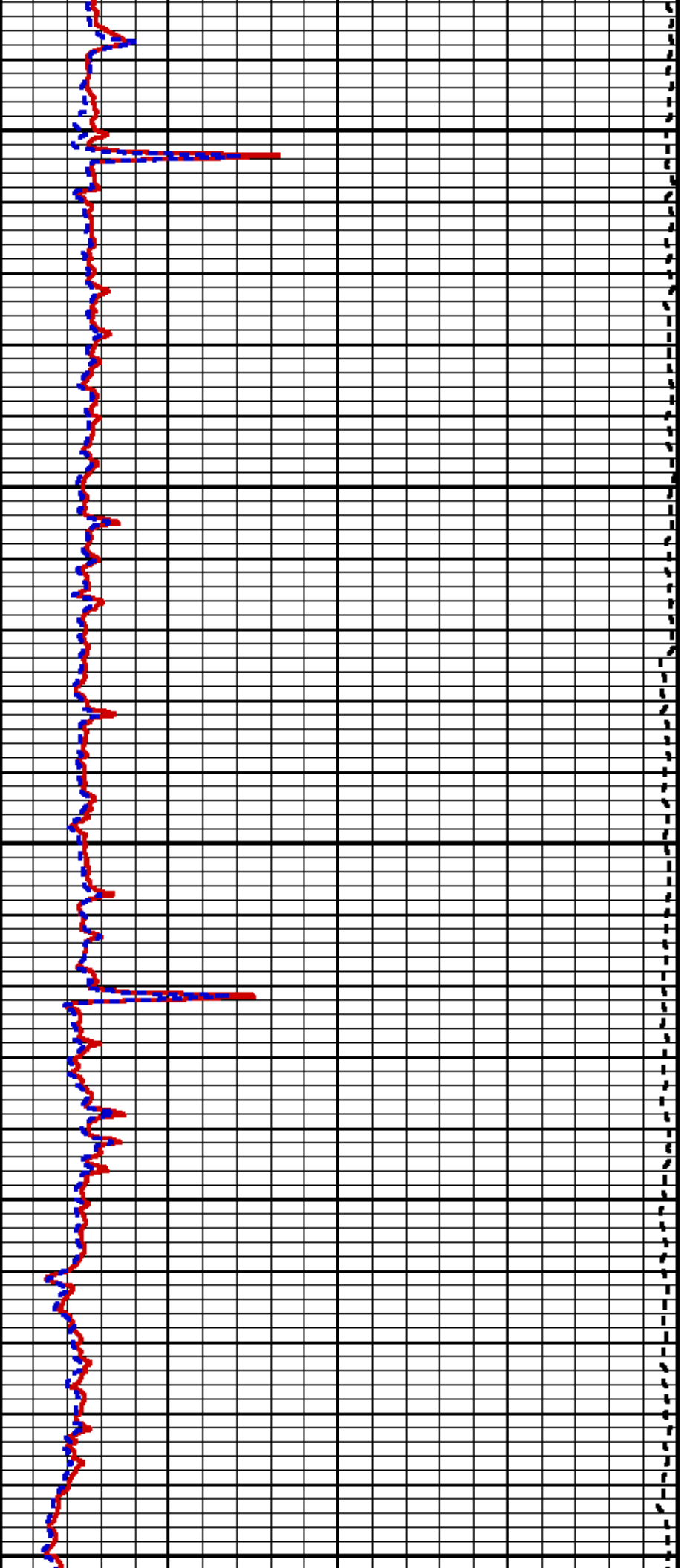


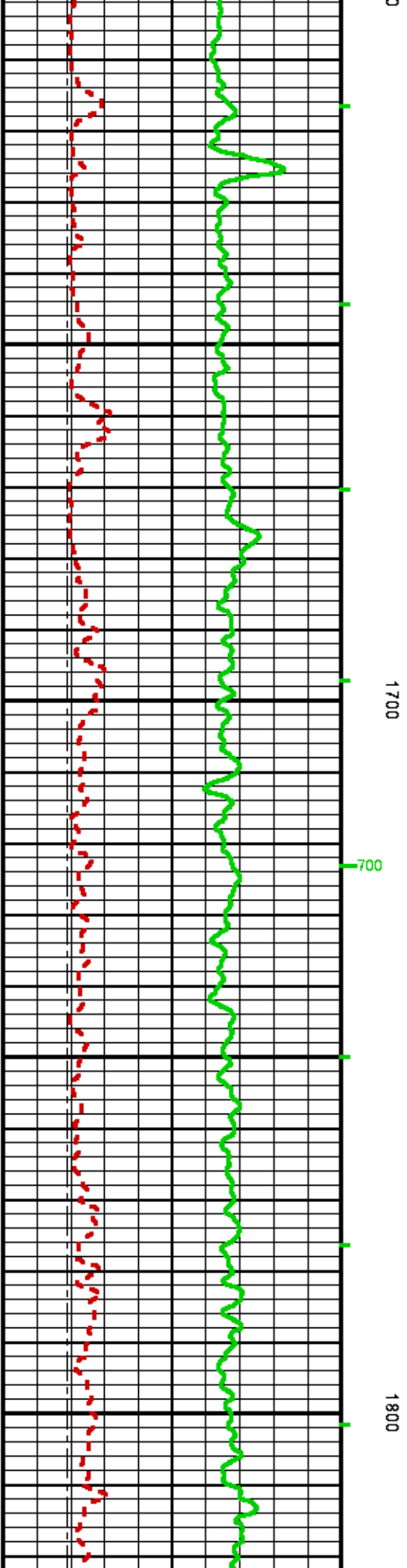
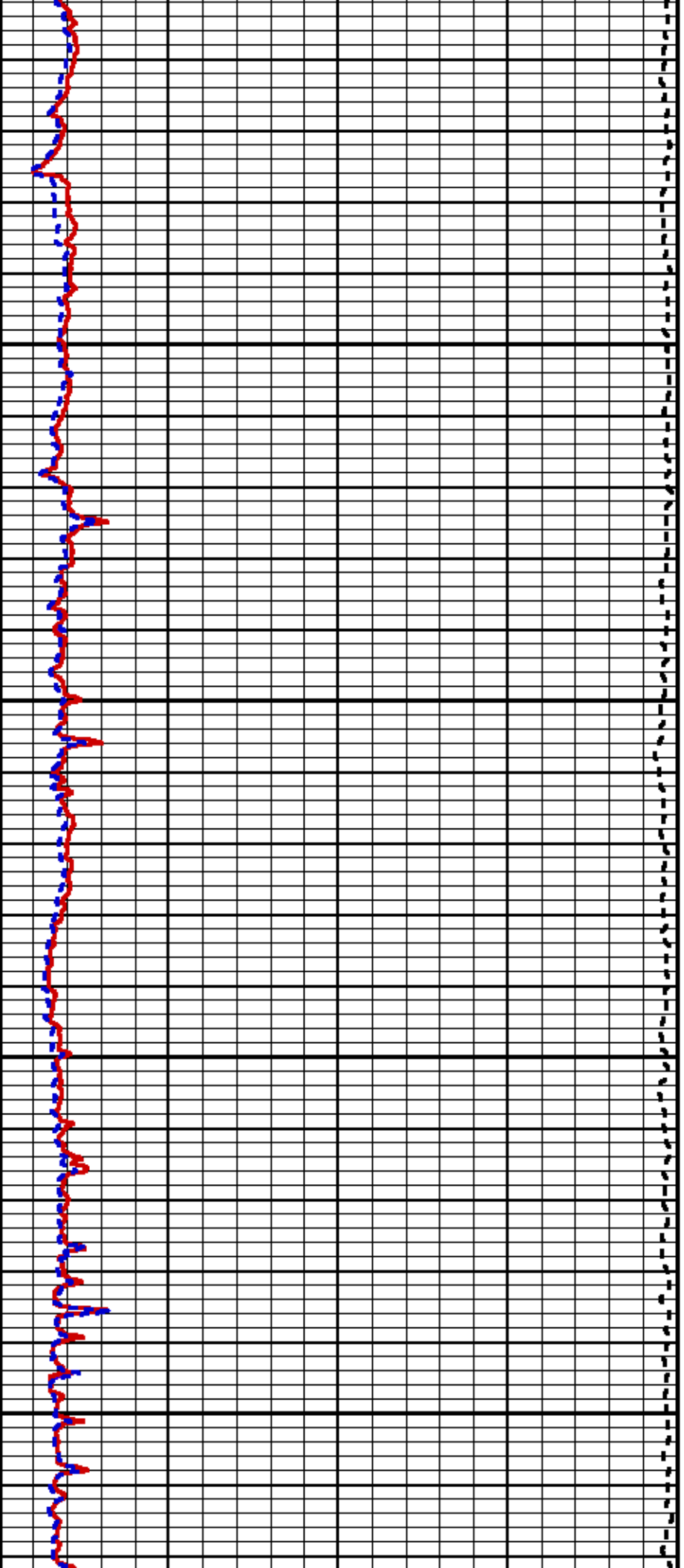
1200

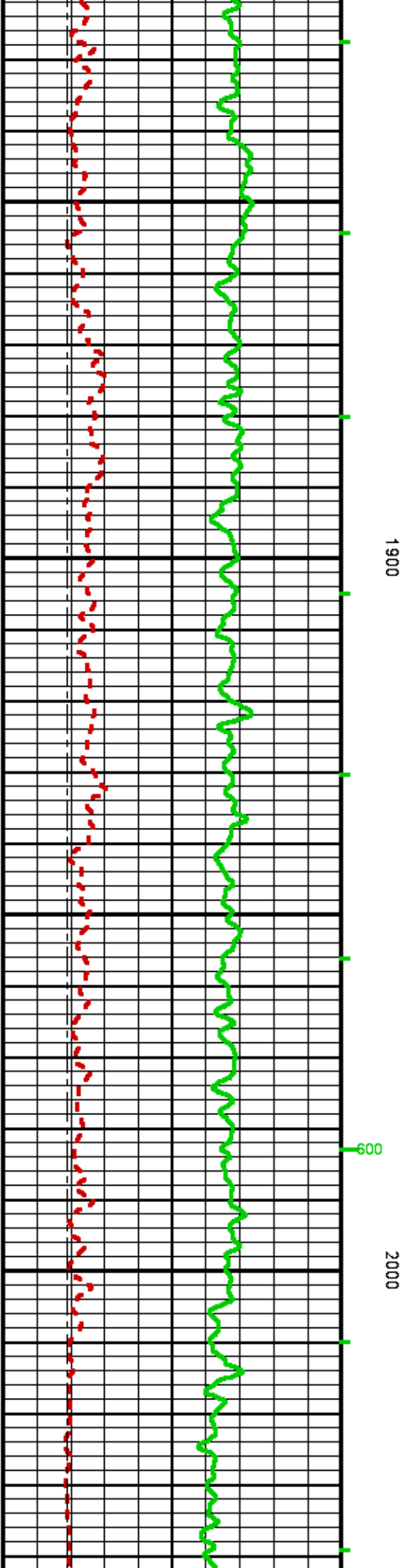
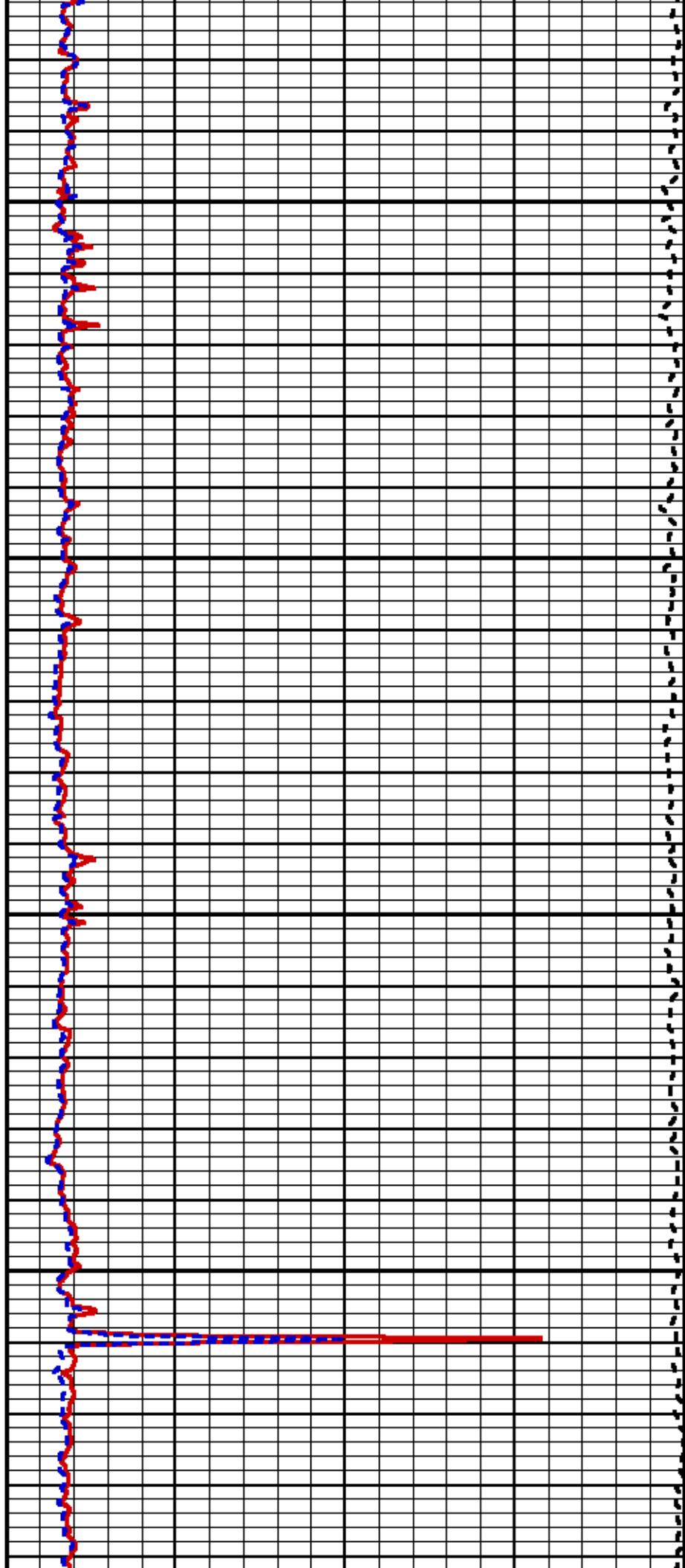
1300

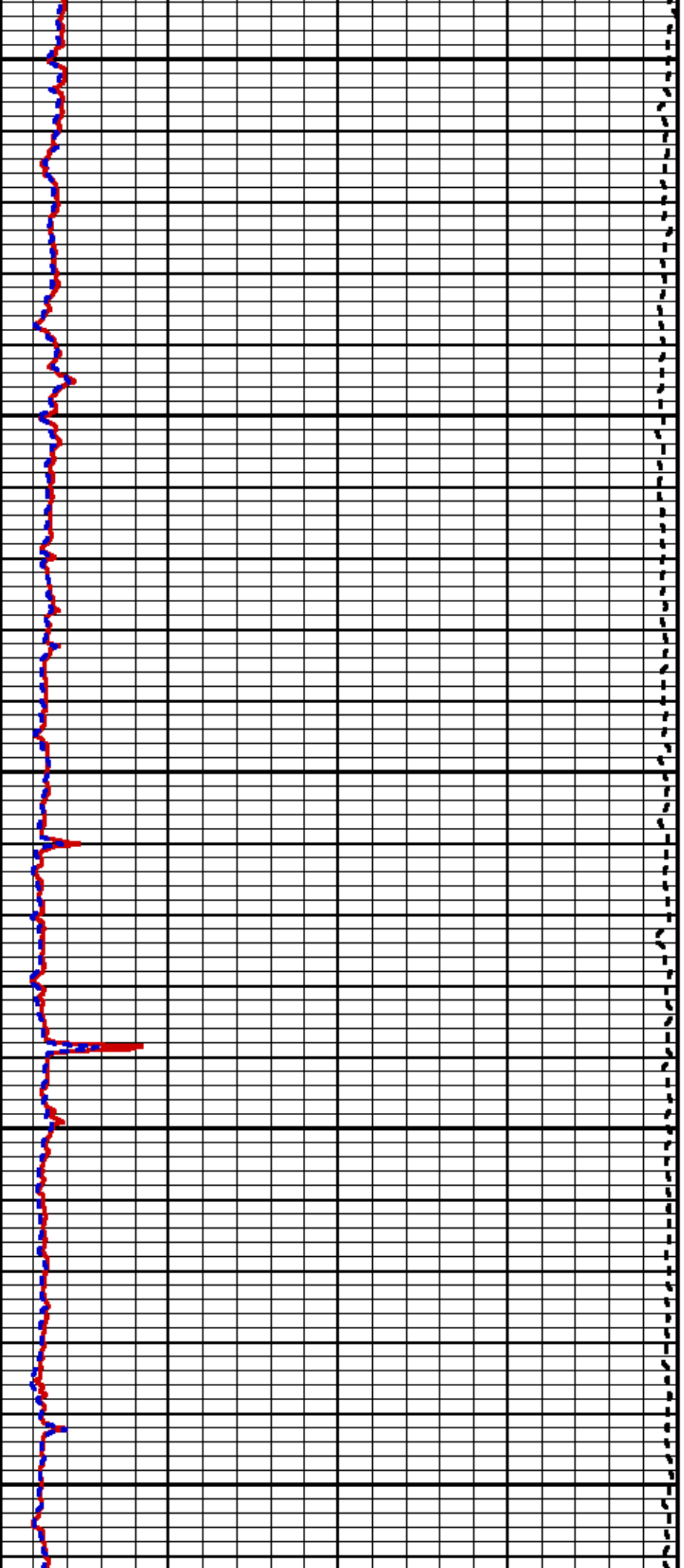








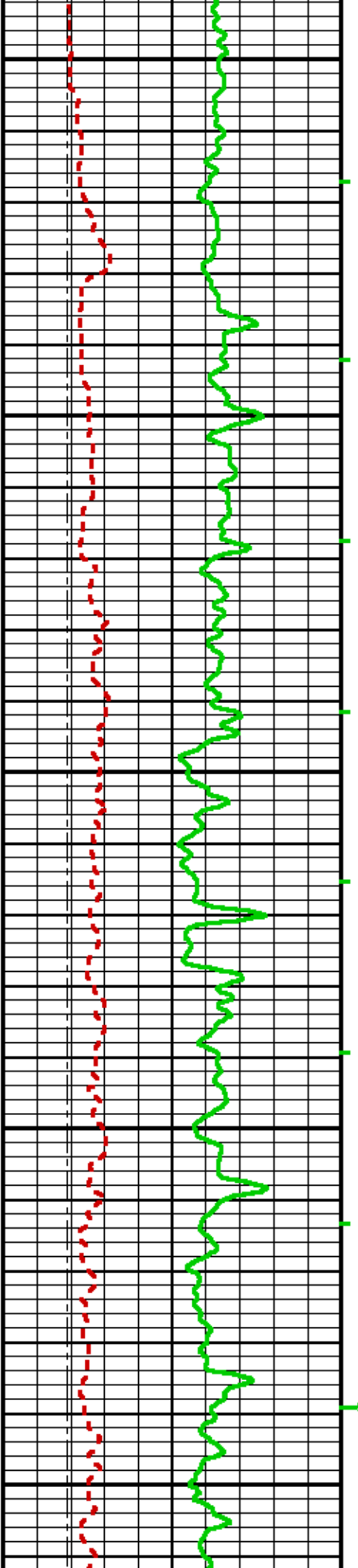


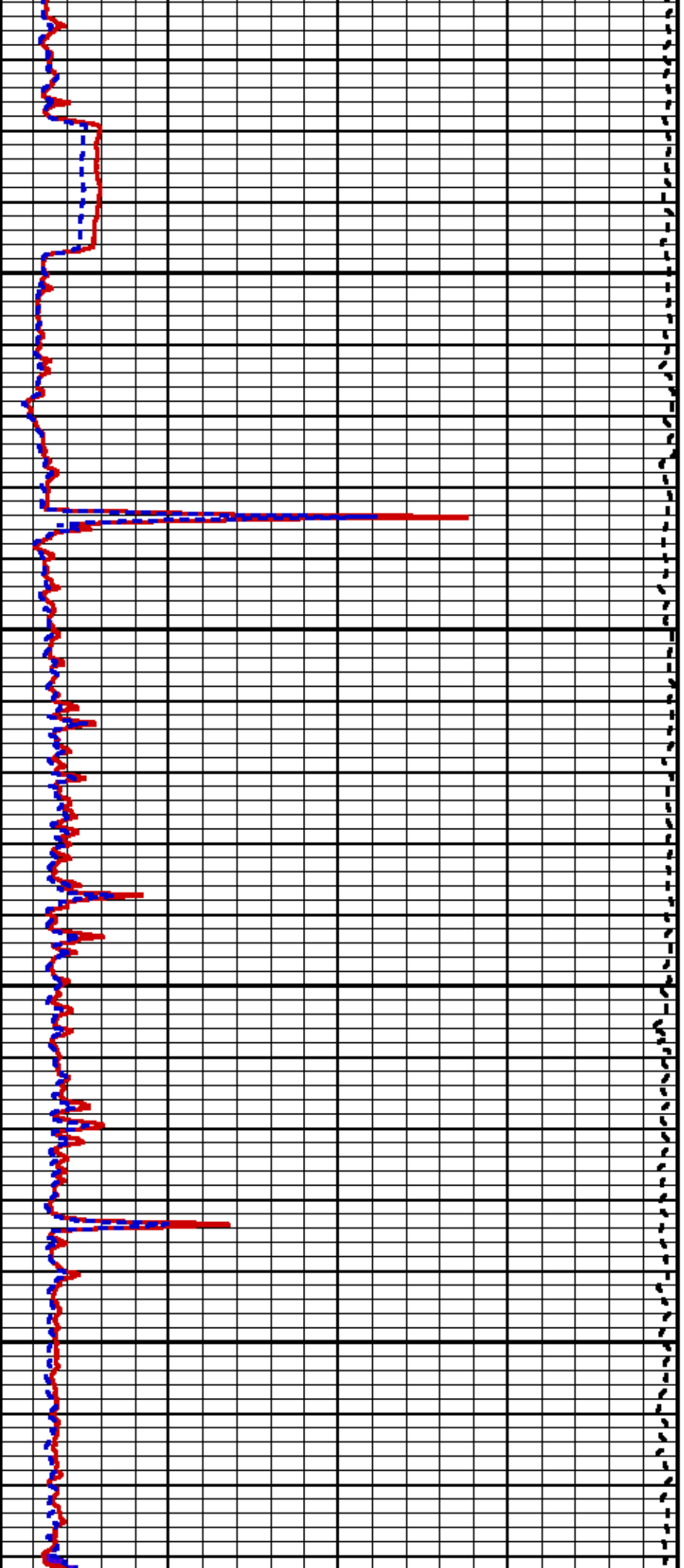


2100

2200

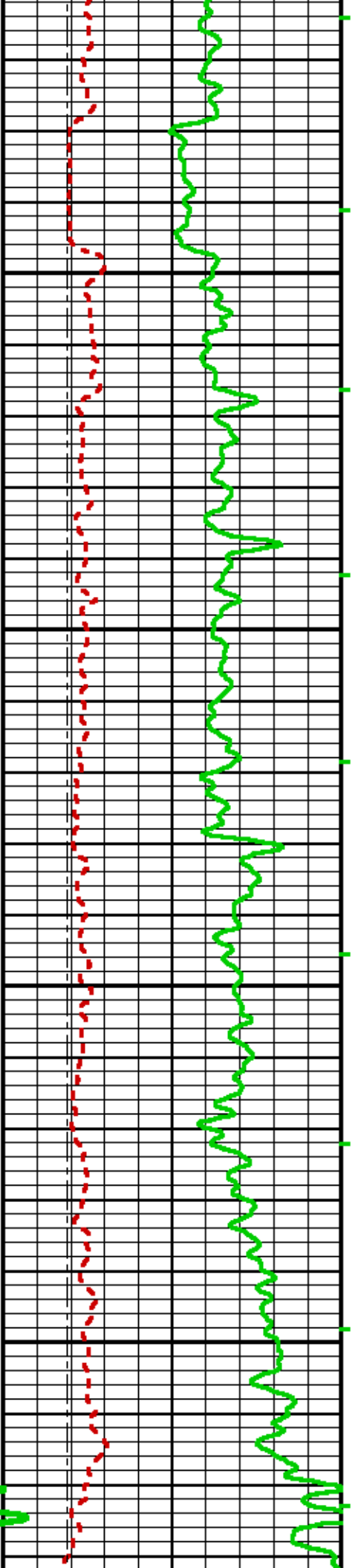
500

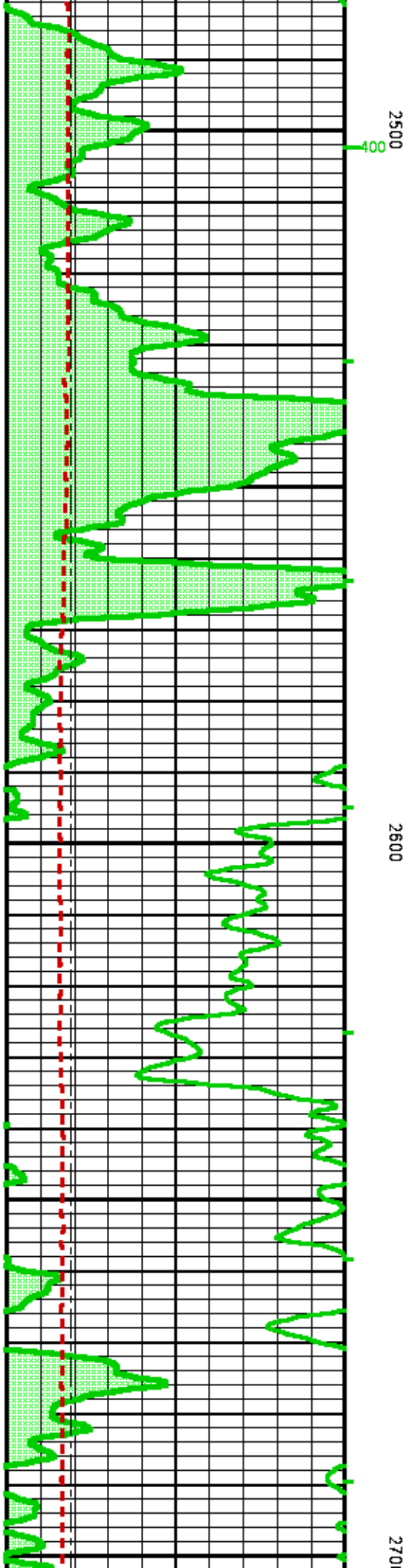
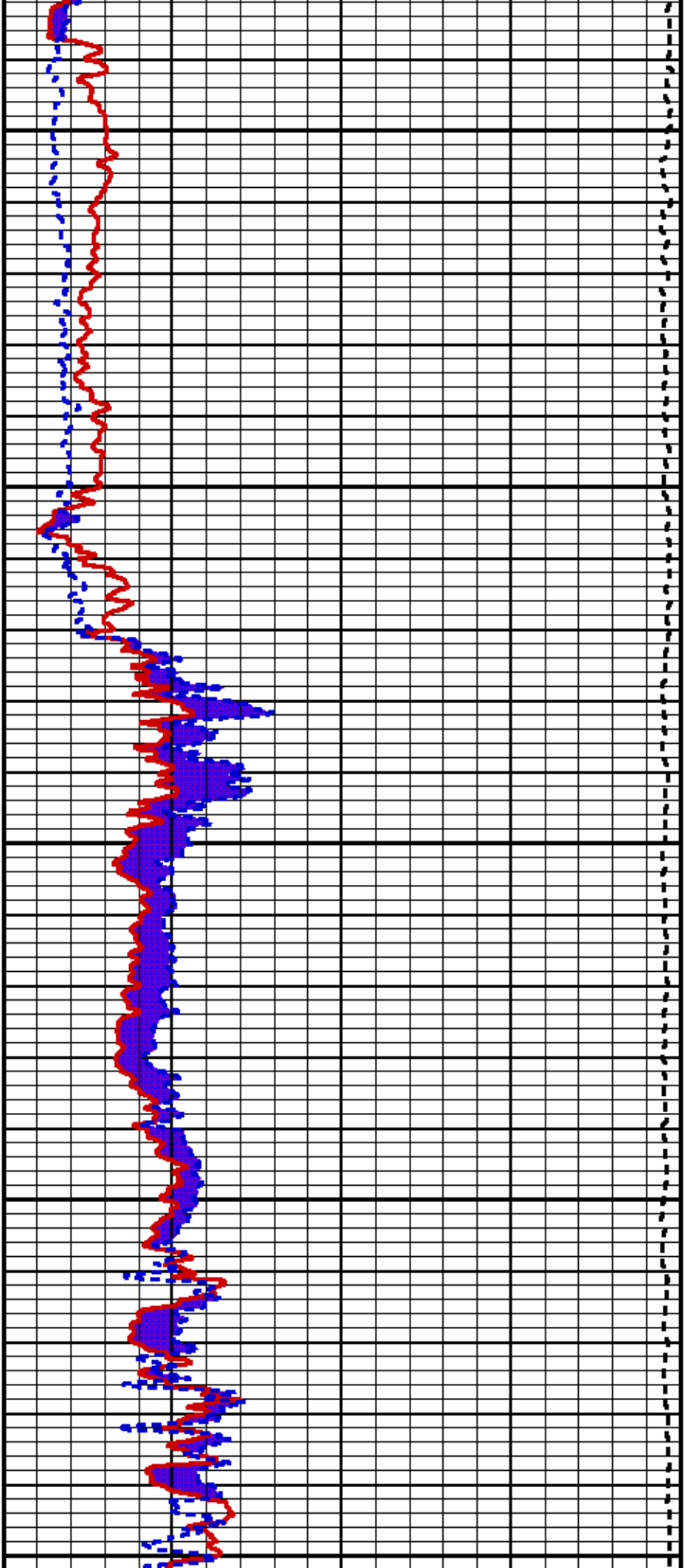


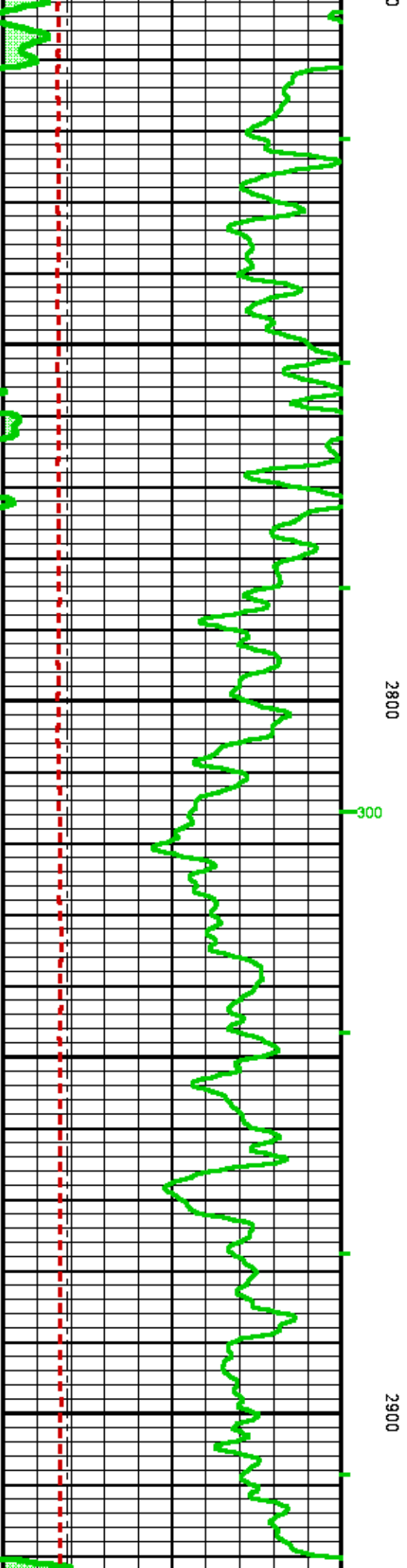
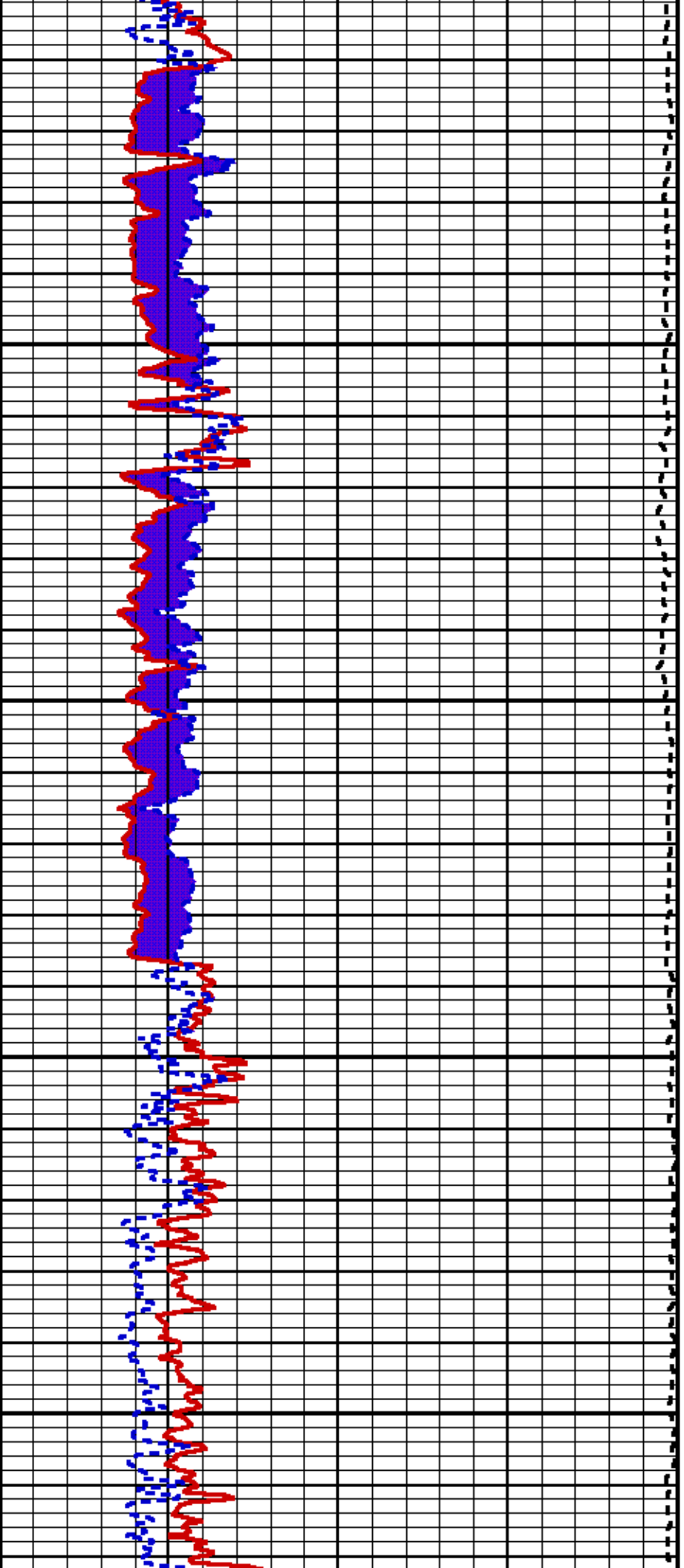


2300

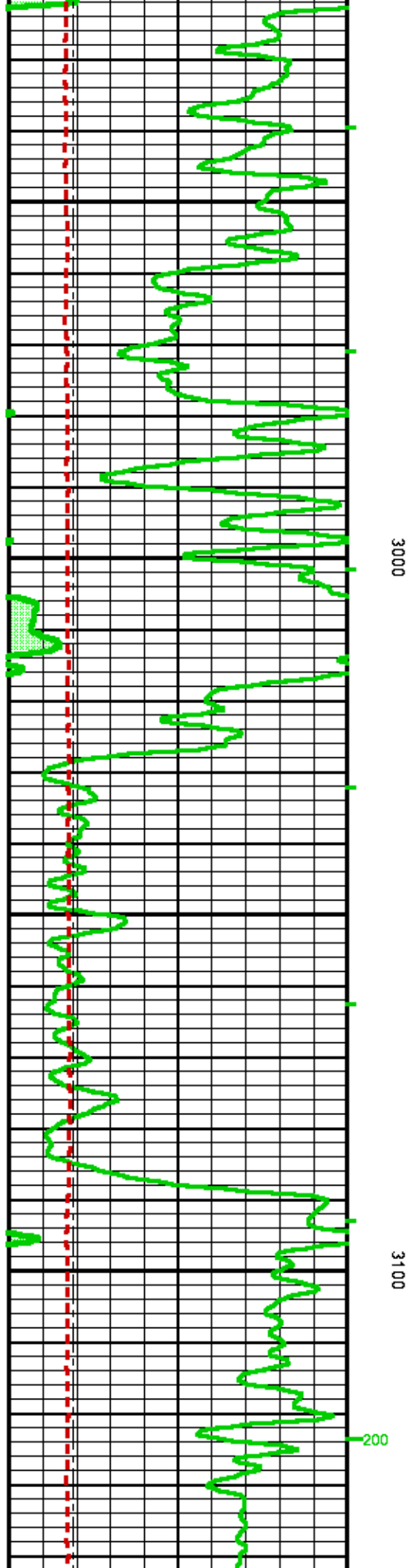
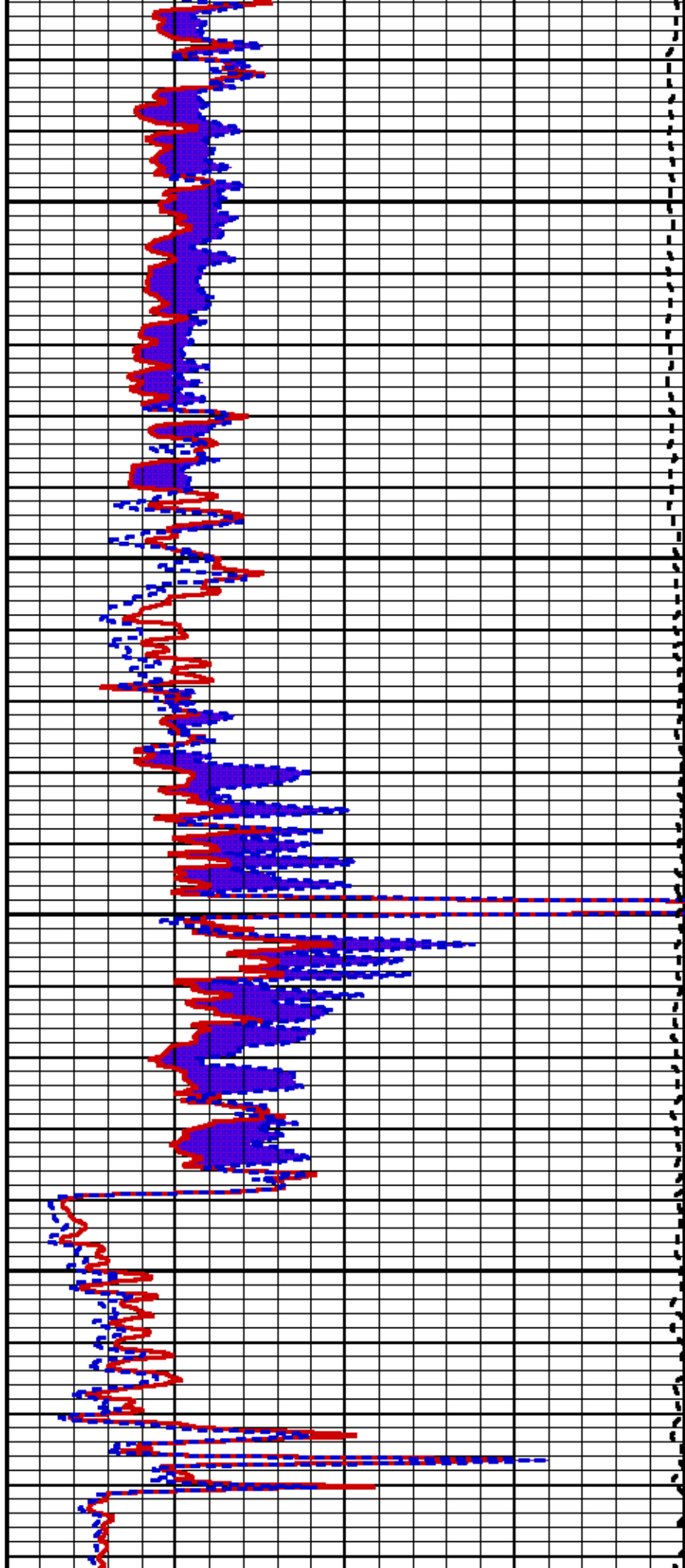
2400



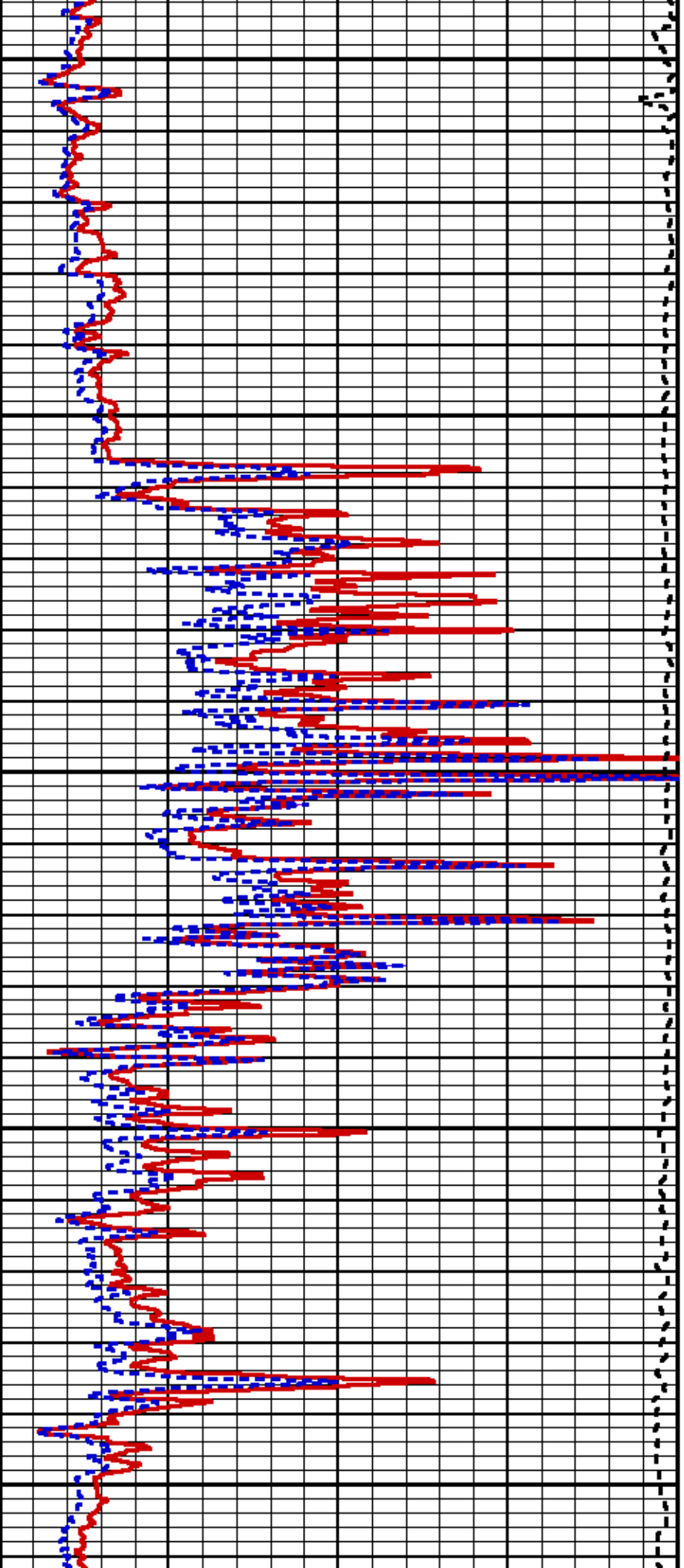






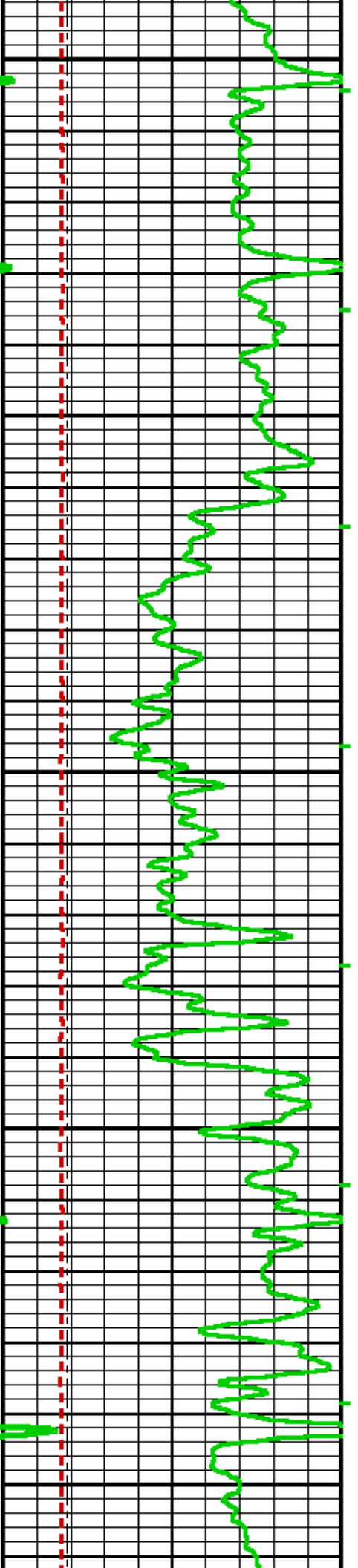


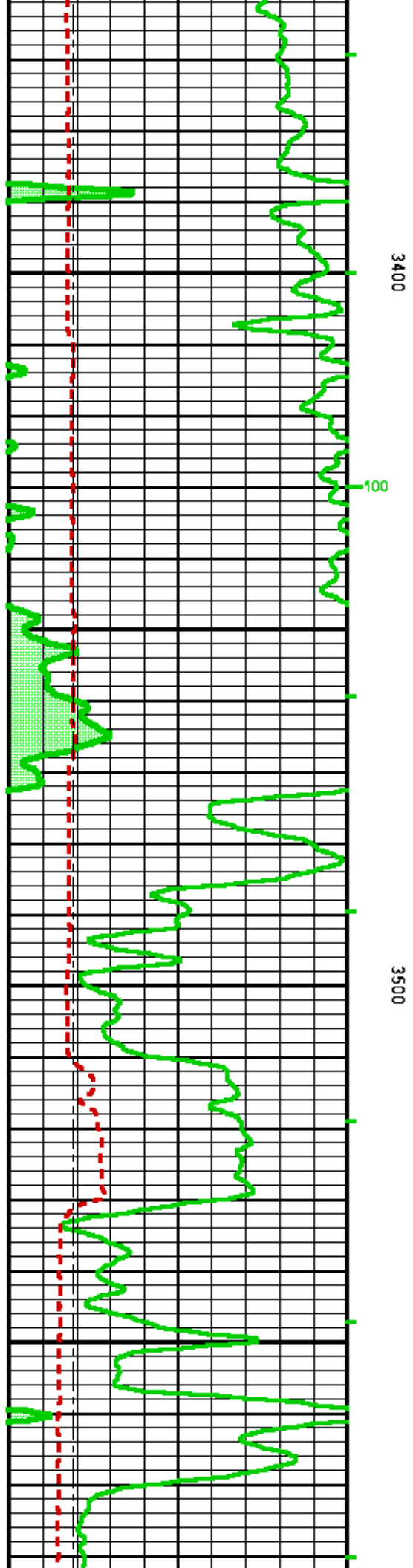
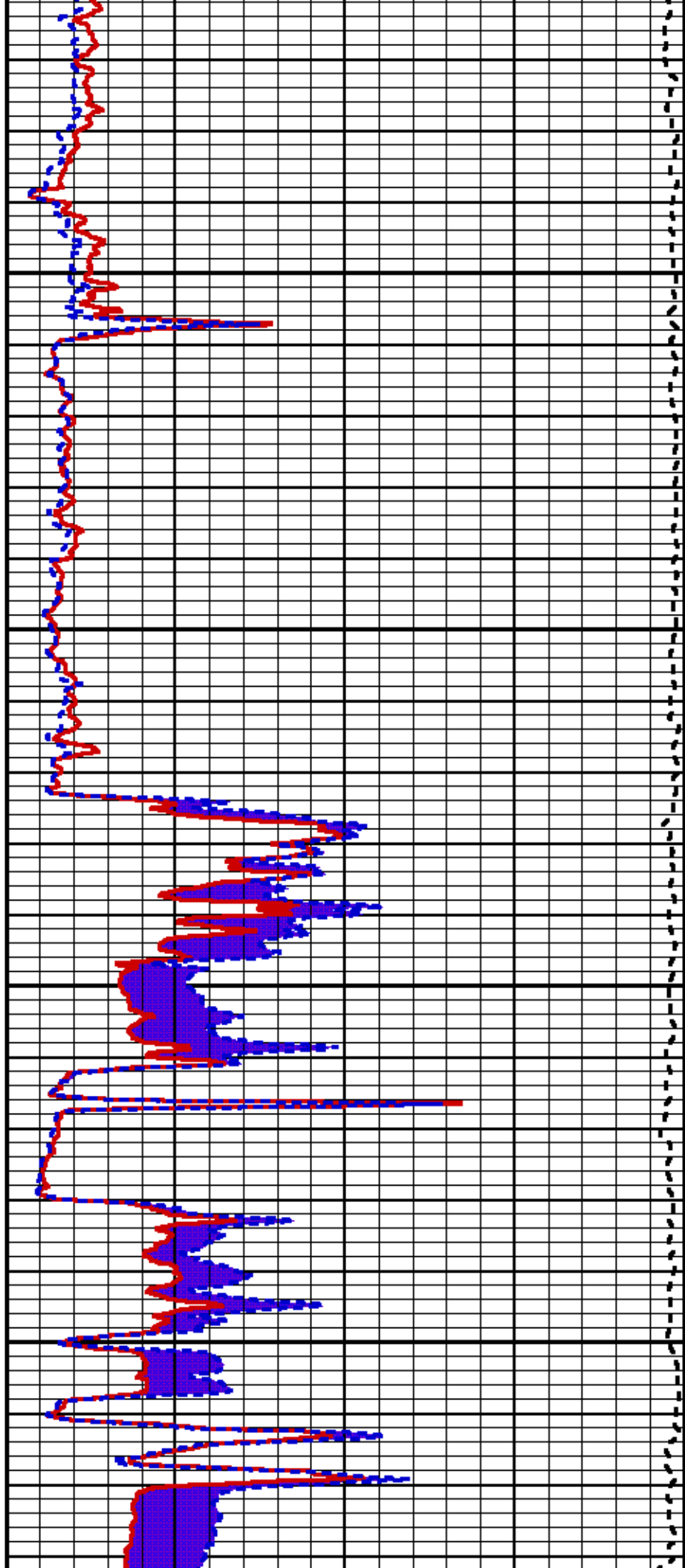


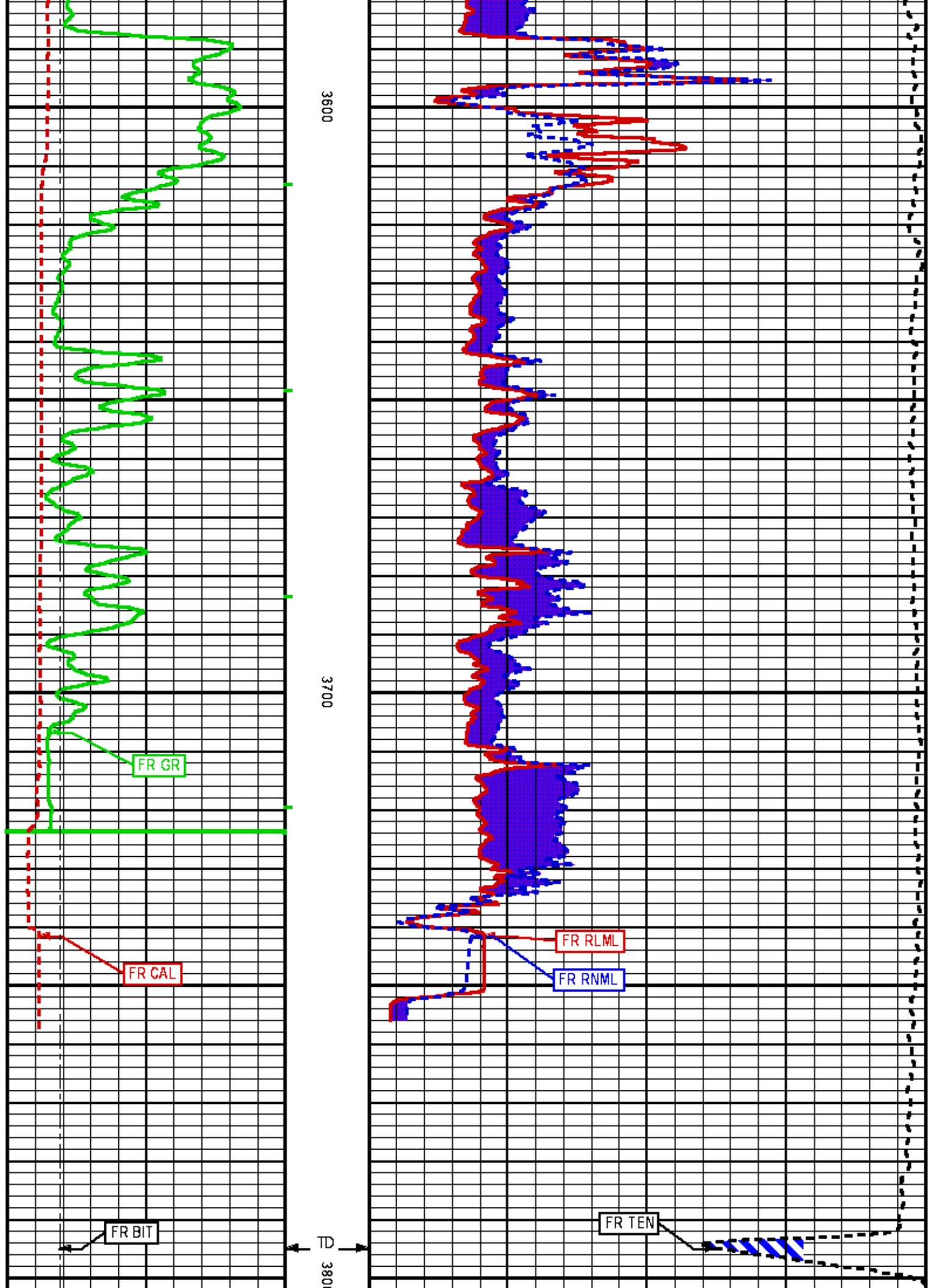


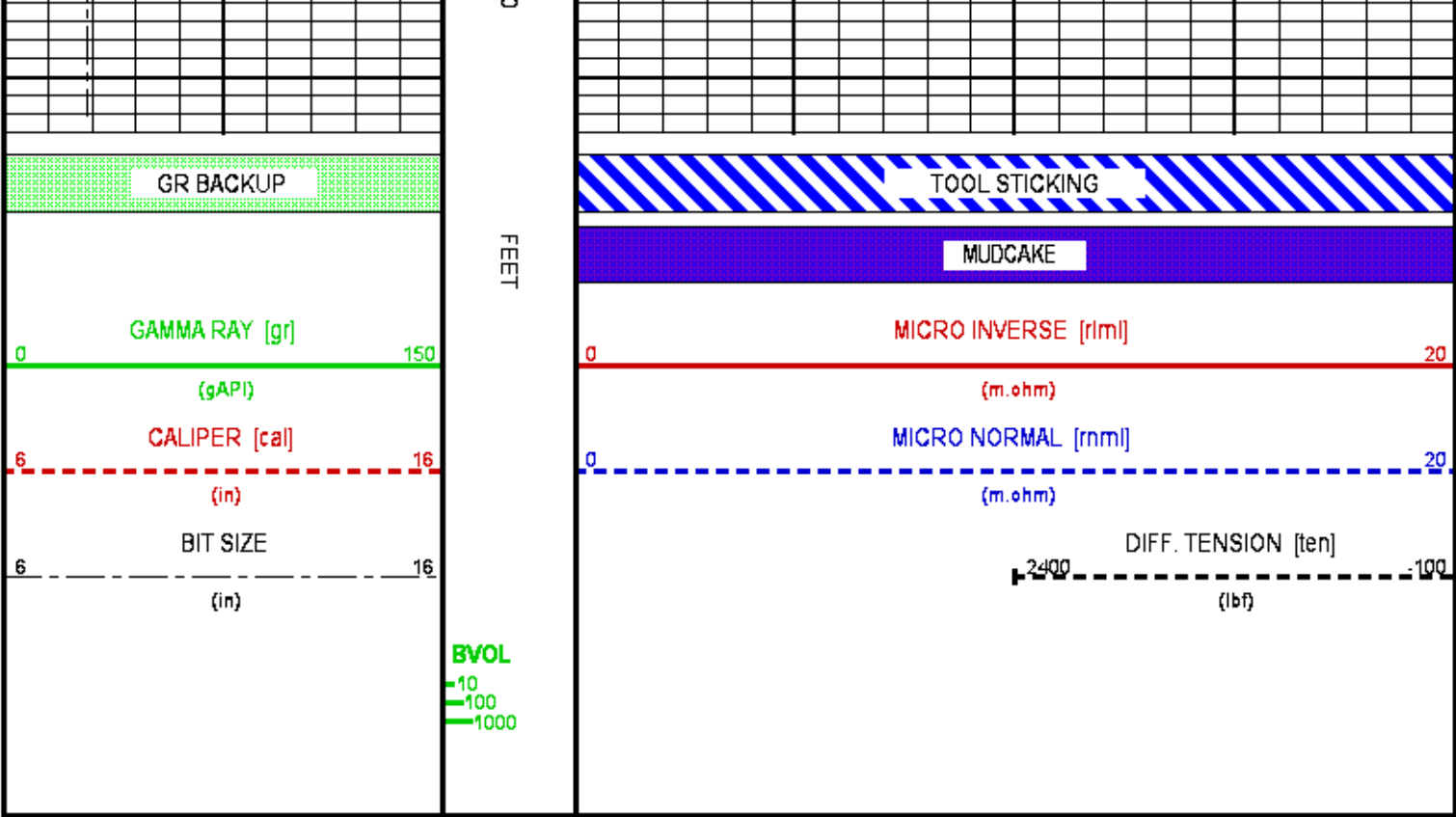
3200

3300









REPEAT LOG

ECLIPS 6.2i ECLIPS General Release Rel 6.2i Wed Jun 12 12:21:40 CDT 2013  
Updates: 31 Patches: 5  
Plotted: Tue Mar 4 17:44:01 2014

PARAMETER AND FILTER SUMMARY REPORT					
FILE: /dat1a/083012/n777101.prm LOGGING MODE: DEPTH DIRECTION: UP TOP DEPTH: 3434.814 ft BOTTOM DEPTH: 3605.750 ft					
SYMMETRIC FILTER					
MEASUREMENT TYPE	PARAMETER	VALUE	UNITS	INTERVAL (ft)	
TTRM	FILTER ( )	medium (1)		TOP	BOTTOM
	FILTER (.h)	medium (1)		"	"
	FILTER (.i)	medium (1)		"	"
TENSION	FILTER ( )	medium (1)		"	"
GR	FILTER ( )	medium (1)		"	"
ML	FILTER ( )	light (2a)		"	"
BOREHOLE & CEMENT					
MEASUREMENT TYPE	PARAMETER	VALUE	UNITS	INTERVAL (ft)	
CASING - BOREHOLE & CEMENT VOLUME	CASING O.D.	4.500	in	TOP	BOTTOM
X-Y COMBINED CALIPER PROCESSING	X-Y Caliper	X-Axis		"	"
BIT SIZE	BIT SIZE	7.875	in	"	"
MUD SAMPLE RESISTIVITY	MUD SAMPLE TEMP	72.0	degF	"	"
	MUD SAMPLE RES	0.490	ohm.m	"	"
BOREHOLE TEMP from GRADIENT	Known BH REF TEMP	77.0	degF	"	"
	at BH REF DEPTH	0.0	ft	"	"

BOREHOLE CORR DIAMETER SOURCE	W/TEMP GRADIENT	1.200	0.01 degF/ft	"	"
BH MUD RESISTIVITY SOURCE	CALIPER/FIXED DIA. (cal/ml*)	USE CALIPER		"	"
	RMUD SOURCE	TOOL MEASURED		"	"

### ML PARMS

MEASUREMENT TYPE	PARAMETER	VALUE	UNITS	INTERVAL (ft)
ML BOREHOLE CORRECTION	BOREHOLE CORR	ON		TOP BOTTOM

### CURVE DESCRIPTION REPORT

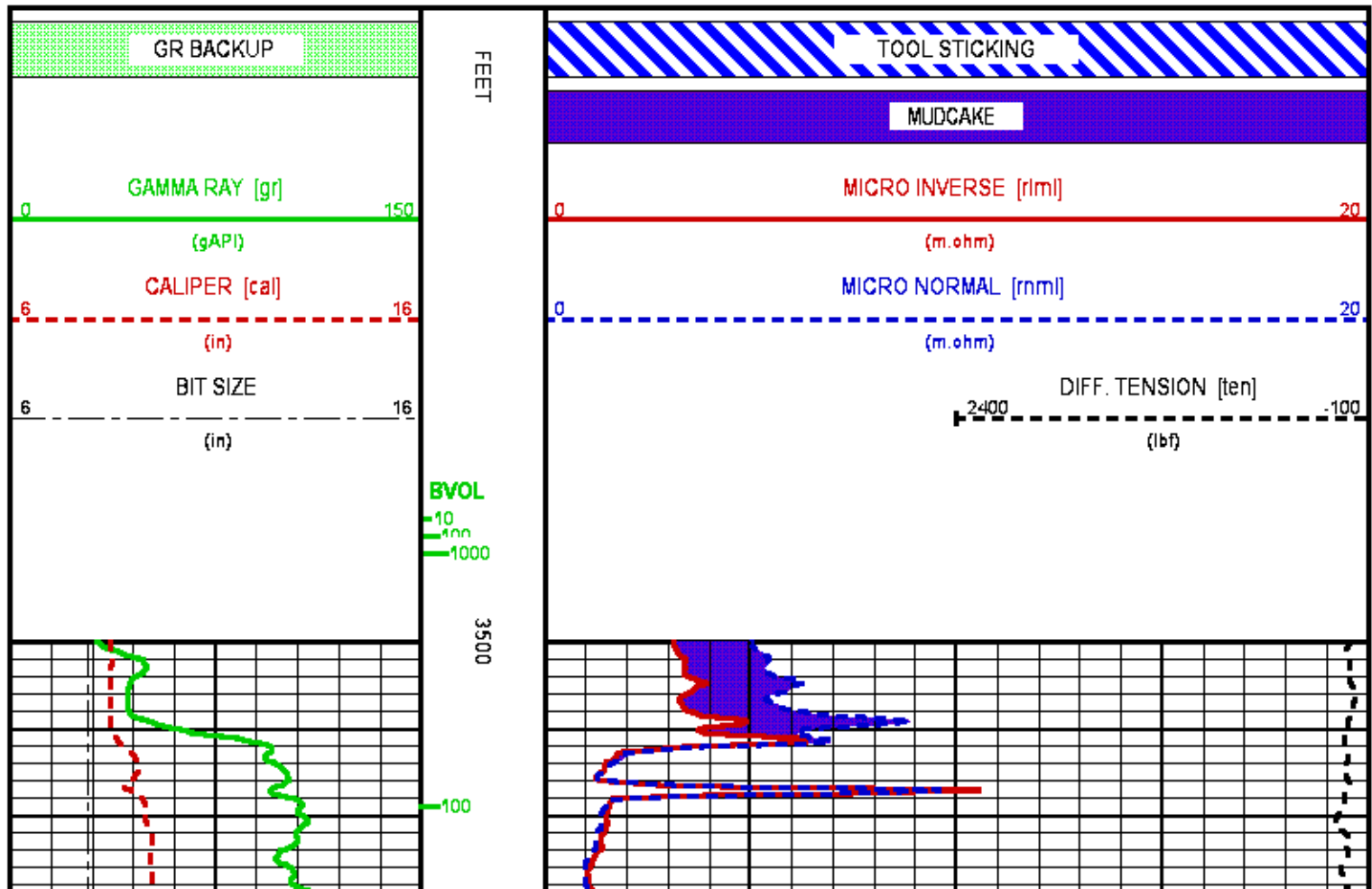
CURVE NAME	CREATION DATE	CURVE DESCRIPTION
F1:BIT	Mar 4 14:57:30 2014	BIT SIZE
F1:BVOL	Mar 4 14:57:30 2014	BOREHOLE VOLUME
F1:CAL	Mar 4 14:57:30 2014	CALIPER
F1:GR	Mar 4 14:57:30 2014	GAMMA RAY
F1:RLML	Mar 4 14:57:30 2014	1-INCH LATERAL RESISTIVITY
F1:RNML	Mar 4 14:57:30 2014	2-INCH NORMAL RESISTIVITY
F1:TEN	Mar 4 14:57:30 2014	DIFFERENTIAL TENSION

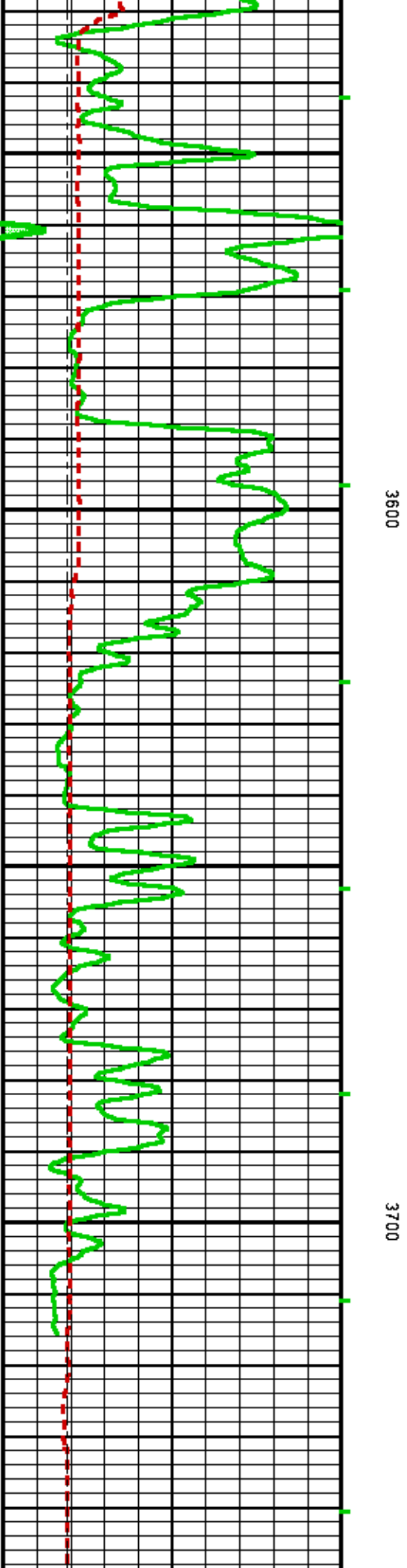
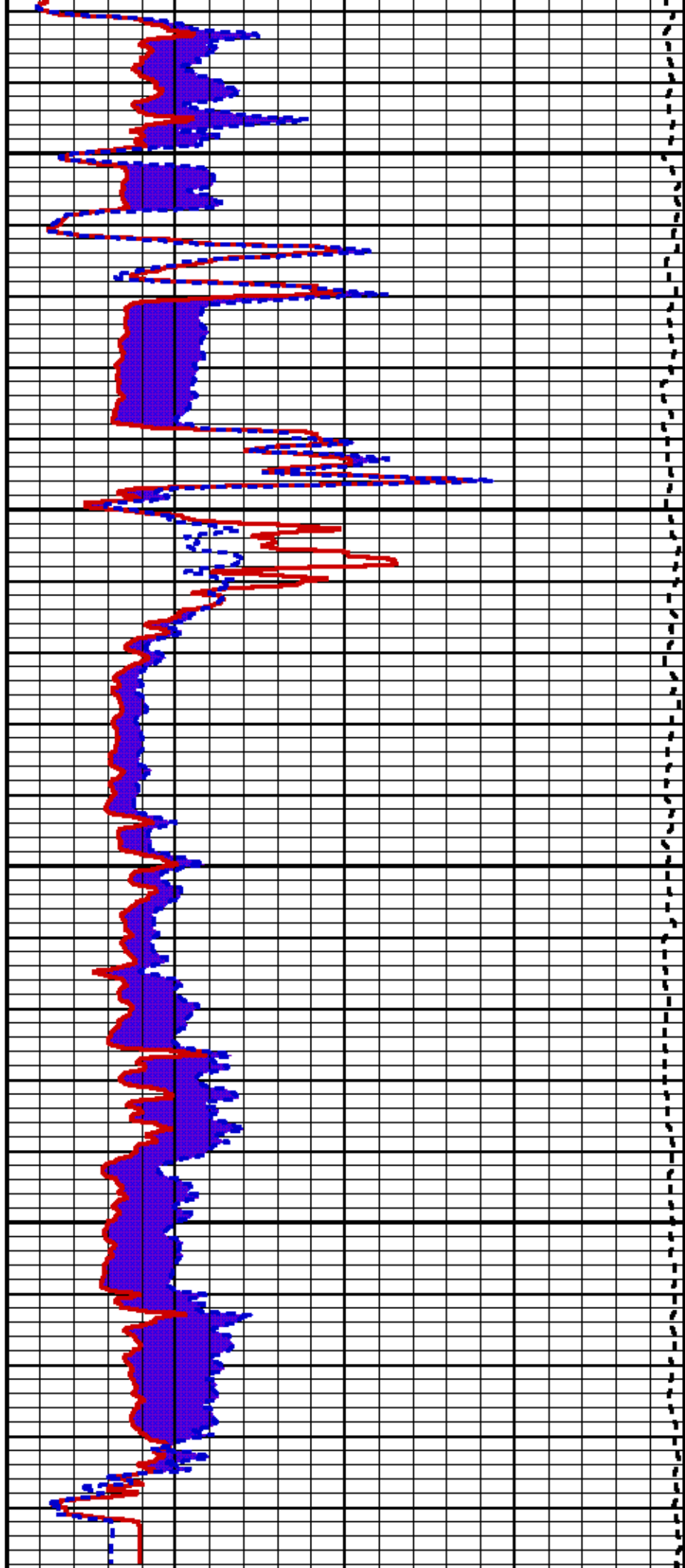
### CURVE MEASURE POINT OFFSET

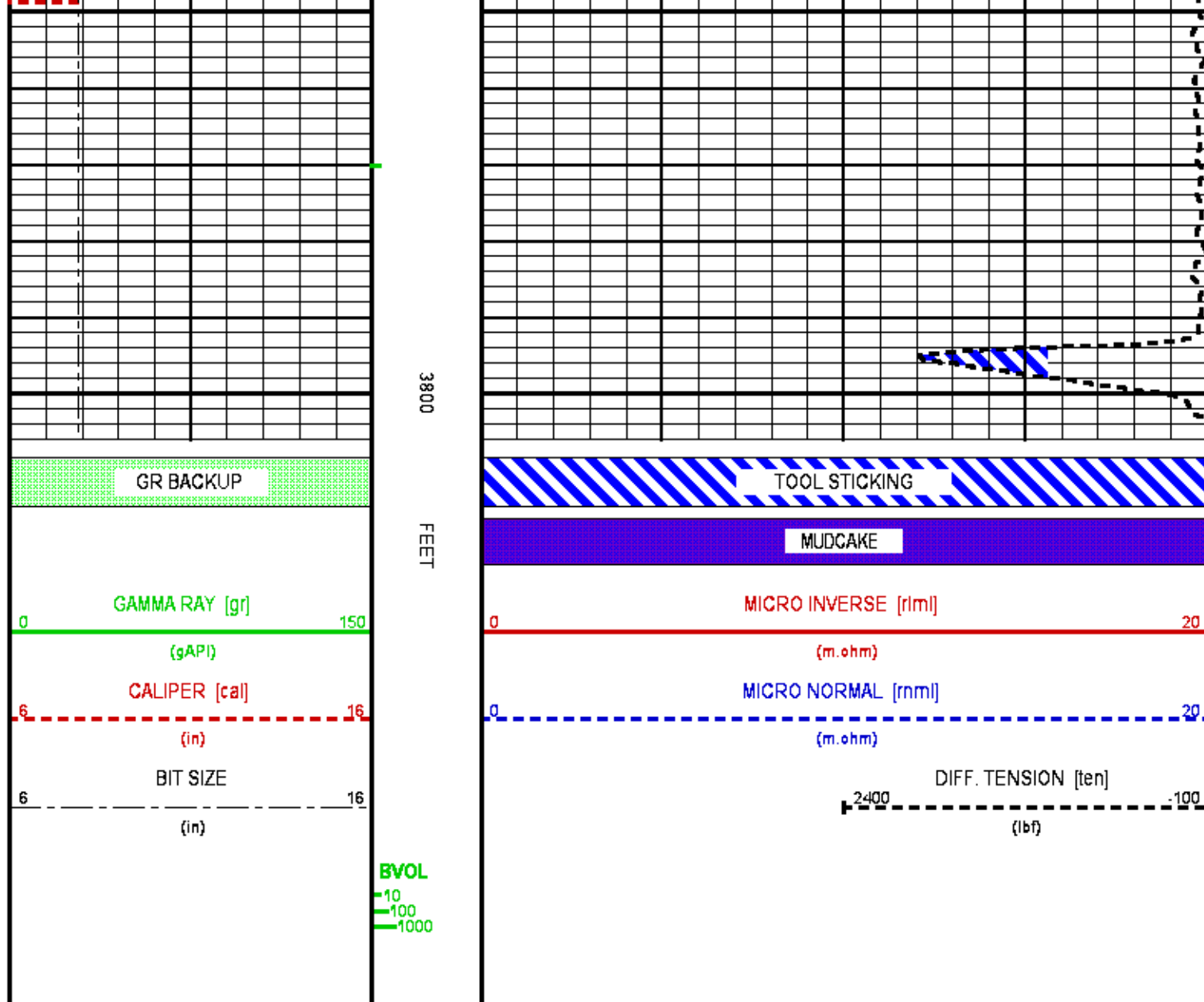
CURVE	OFFSET (ft)	CURVE	OFFSET (ft)	CURVE	OFFSET (ft)	CURVE	OFFSET (ft)
BIT	0.00	GR	88.12	RNML	53.25		
CAL	53.25	RLML	53.25	TEN	0.00		

**Presentation** : HL6670:/dat1a/083012/ml\_REPEAT.fvpdf [5"/100' Scale]  
**Plot Interval** : 3500 - 3805.75 Feet

**Data File 1** : F1: HL6670:/dat1a/083012/REPEAT.xtf  
**Created On** : Mar 4 14:57:30 2014  
**Company** : BAYSWATER EXPLORATION AND PRODUCTION  
**Well** : CRAIG #44-18  
**Field** : WILDCAT  
**File Interval** : 93 - 3805.75 Feet  
**OCT** : n7771







## CALIBRATION / VERIFICATION SUMMARY

Source File: /dat1a/083012/CALS.tp1

### GR PRIMARY CALIBRATION SUMMARY

TOOL #: 1329XA 10330272

DATE/TIME PERFORMED: Sat Mar 1 16:45:22 2014

UNIT #: 3885TC 6685

CALB JIG #: 4702NK DA-501

	BACKGROUND (cts/s)	CALBRTR ON (cts/s)	GR DIFF (cts/s)	MULT	BACKGROUND (gAPI)	CALBRTR ON (gAPI)	CALBRTR (gAPI)
GR	343.84	1293.87	950.0 890.0 960.0	0.158	54.29	204.29	150

### GR PRIMARY VERIFICATION SUMMARY

TOOL #: 1329XA 10330272

DATE/TIME PERFORMED: Sat Mar 1 16:52:14 2014

UNIT #: 3885TC 6685

VERI JIG #: 4702NK DA-501

BACKGROUND CALBRTR ON MULT BACKGROUND CALBRTR ON DIFF

	BACKGROUND (cts/s)	CALBRTR ON (cts/s)	MULT	BACKGROUND (gAPI)	CALBRTR ON (gAPI)	DIFF. (gAPI)
GR	337.84	1257.27	0.158	53.34	198.51	145.17
						140.00 160.00

### GR BEFORE LOG VERIFICATION SUMMARY

TOOL #: 1329XA 10330272 DATE/TIME PERFORMED: Tue Mar 4 14:20:33 2014 DAYS SINCE CAL: 2

UNIT #: 388DTA HL667D VERI JIG #: 4702NK DA-501

	BACKGROUND (cts/s)	CALBRTR ON (cts/s)	MULT	BACKGROUND (gAPI)	CALBRTR ON (gAPI)	DIFF. (gAPI)
GR	355.00	1258.38	0.158	56.05	198.69	142.64
						135.17 155.17

### CAL PRIMARY CALIBRATION SUMMARY

TOOL #: 2234XA 10415656 DATE/TIME PERFORMED: Sat Mar 1 14:35:03 2014

UNIT #: 3885TC 6685

	SMALL RING	LARGE RING	MULT	ADD	SMALL RING (in)	LARGE RING (in)
CALIPER	1270.4	2064.0	0.00772	-1.92994	7.875	14.000

### CAL BEFORE LOG VERIFICATION SUMMARY

TOOL #: 2234XA 10415656 DATE/TIME PERFORMED: Tue Mar 4 14:35:19 2014 DAYS SINCE CAL: 3

UNIT #: 388DTA HL667D

	I.D.	MULT	ADD	I.D. (in)
CALIPER	1298.4	0.00772	-1.92994	8.091

### CAL PRIMARY CALIBRATION SUMMARY

TOOL #: 1243XA 11756187 DATE/TIME PERFORMED: Sun Mar 2 11:44:40 2014

UNIT #: 3885TC 6685

	SIZE (in)	VALUE (mV)	MULTIPLIER	ADD
SMALL RING	7.875	621		
LARGE RING	14.000	1034	0.01483	-1.33394

### CAL BEFORE LOG VERIFICATION SUMMARY

TOOL #: 1243XA 11756187 DATE/TIME PERFORMED: Tue Mar 4 14:35:14 2014 DAYS SINCE CAL: 2

UNIT #: 388DTA HL667D

	ACT SIZE	VALUE (mV)	MULTIPLIER	ADD	SIZE (in)
	8.100	618.1	0.01483	-1.33394	7.83
					7.75 8.45



CABLEHEAD

Diameter : 3.38"  
 Length : 5.50'  
 Weight : 34 lbs  
 Series : CABL33B  
 Mnemonic : CBLH  
 Measure Point: 3.75': CABLEHEAD TOP

115.10'

CABLEHEAD TOP 113.35'

DOWNHOLE POWER ADAPTER

Diameter : 3.63"  
 Length : 5.37'  
 Weight : 86 lbs  
 Series : 4430XB  
 Mnemonic : DHPA

TTRM SUB

Diameter : 3.63"  
 Length : 3.83'  
 Weight : 62 lbs  
 Series : 39B1XA  
 Mnemonic : TTRM  
 Measure Point: 1.38': TEMP MP  
 Measure Point: 1.13': RM MP

TEMP MP 101.88'

RM MP 101.63'

WTS COMMON REMOTE

Diameter : 3.63"  
 Length : 6.36'  
 Weight : 126 lbs  
 Series : 3514XB  
 Mnemonic : WTS

DIGITAL SPECTRALOG

Diameter : 3.63"  
 Length : 7.31'  
 Weight : 130 lbs  
 Series : 1329XA  
 Mnemonic : DSL  
 Measure Point: 1.60': GR MP

GR MP 88.42'

COMPENSATED NEUTRON

Diameter : 3.63"  
 Length : 7.59'  
 Weight : 150 lbs  
 Series : 3446XA  
 Mnemonic : CN  
 Measure Point: 3.63': LSN MP  
 Measure Point: 3.34': SSN MP

LSN MP 81.86'

SSN MP 81.46'

Z-DENSILOG

Diameter : 4.88"  
Length : 11.23'  
Weight : 360 lbs  
Series : 2234XA  
Mnemonic : ZDL  
Measure Point: 3.19': CAL MP  
Measure Point: 3.47': LSD MP  
Measure Point: 3.07': SSD MP

CAL MP --- 71.20'

LSD MP --- 70.48'

SSD MP --- 70.08'

KNUCKLE JOINT (DOUBLE)

Diameter : 3.38"  
Length : 4.65'  
Weight : 90 lbs  
Series : 3939XA  
Mnemonic : KNJT

WTS MICROLATEROLOG

Diameter : 4.00"  
Length : 11.25'  
Weight : 258 lbs  
Series : 1243XA  
Mnemonic : RLL  
Measure Point: 1.55': MP

MP --- 53.66'

ARRAY ACOUSTILOG ELECTRONICS, B CHANNEL

Diameter : 3.38"  
Length : 7.82'  
Weight : 102 lbs  
Series : 1677EA  
Mnemonic : XMAL

T1 MP --- 39.48'

DIGITAL ACOUSTILOG  
Diameter : 3.38"  
Length : 12.76'  
Weight : 145 lbs  
Series : 16B0MA  
Mnemonic : DAL  
Measure Point: 7.95': T1 MP  
Measure Point: 5.95': T2 MP  
Measure Point: 3.95': R1 MP

T2 MP 37.48'

R1 MP 34.48'

4 ARM BOW SPRING CENTRALIZER

Diameter : 3.38"  
Length : 4.12'  
Weight : 72 lbs  
Series : 4341XA  
Mnemonic : CENT


HIGH DEFINITION INDUCTION TOOL

Diameter : 3.62"  
Length : 27.13'  
Weight : 415 lbs  
Series : 1515XA  
Mnemonic : HDIL  
Measure Point: 13.91': SP MP  
Measure Point: 7.44': XMTR MP

SP MP 14.19'

XMTR MP 7.72'

TOTAL LENGTH: 115.10'  
TOTAL WEIGHT: 3046 lbs  
MAX DIAMETER: 0'4.88"

	COMPANY	<u>BAYSWATER EXPLORATOIN &amp; PRODUCTION</u>	FILE NO:	<u>83012</u>
	WELL	<u>CRAIG #44-18</u>	API NO:	<u>05-121-11041</u>
	FIELD	<u>WILDCAT</u>		
	COUNTY	<u>WASHINGTON</u> STATE <u>COLORADO</u>		
	LOCATION:	ELEVATIONS:		
	SHL: 1110' FSL & 962' FEL	KB 4502 FT		
		DF		
		GL 4490 FT		
	SEC <u>18</u> TWP <u>4S</u> RGE <u>49W</u>	DATE	<u>04-Mar-2014</u>	

