



FILE NO: 83012
API NO: 05-121-11041
COMPANY: BAYSWATER EXPLORATION & PRODUCTION
WELL: CRAIG #44-18
FIELD: WILDCAT
COUNTY: WASHINGTON STATE: COLORADO

Ver. 3.87 LOCATION: SHL: 1110' FSL & 962' FEL
SEC 18 TWP 4S RGE 49W
OTHER SERVICES: HDIL, DAL, ML, ZDL-CN

PERMANENT DATUM: GL ELEVATION 4490 FT
LOG MEASURED FROM: KB 12 FT ABOVE P.D.
DRILL MEAS. FROM: KB
ELEVATIONS: KB 4502 FT, DF, GL 4490 FT

DATE	04-Mar-2014
RUN	1
TRIP	1
SERVICE ORDER	US647714
DEPTH DRILLER	3803 FT
DEPTH LOGGER	3795 FT
BOTTOM LOGGED INTERVAL	3724 FT
TOP LOGGED INTERVAL	220 FT
CASING DRILLER	8.625 IN @ 212 FT
CASING LOGGER	220 FT
BIT SIZE	7.875 IN
TYPE OF FLUID IN HOLE	WBM
DENSITY	8.7 LB/G
VISCOSITY	44 CP
PH	10
FLUID LOSS	7.2 C3
SOURCE OF SAMPLE	FLOWLINE
RM AT MEAS. TEMP.	0.49 OHMM @ 72 DEGF
RM AT MEAS. TEMP.	0.39 OHMM @ 71 DEGF
RM AT MEAS. TEMP.	0.58 OHMM @ 70 DEGF
SOURCE OF RMF	MEASURED
RM AT BHT	0.30 OHMM @ 121 DEGF
TIME SINCE CIRCULATION	4.5 HOURS
MAX. RECORDED TEMP.	121 DEGF
EQUIP. NO.	HL 6670
LOCATION	GRND JCT
RECORDED BY	L KOCH
WITNESSED BY	D. BRUGMAN/R. TALKINGTO

IN MAKING INTERPRETATIONS OF LOGS OUR EMPLOYEES WILL GIVE THE CUSTOMER THE BENEFIT OF THEIR BEST JUDGEMENT. BUT SINCE ALL INTERPRETATIONS ARE OPINIONS BASED ON INFERENCES FROM ELECTRICAL OR OTHER MEASUREMENTS, WE CANNOT, AND WE DO NOT GUARANTEE THE ACCURACY OR CORRECTNESS OF ANY INTERPRETATION. WE SHALL NOT BE LIABLE OR RESPONSIBLE FOR ANY LOSS, COST, DAMAGES, OR EXPENSES WHATSOEVER INCURRED OR SUSTAINED BY THE CUSTOMER RESULTING FROM ANY INTERPRETATION MADE BY ANY OF OUR EMPLOYEES.

REMARKS

RUN 1 TRIP 1: HDIL-DAL-ML-ZDL-CN-GR RUN IN COMBINATION

LAST CIRCULATED ON 4-MAR-2014 @ 11:00
MAIN LOG OFF BOTTOM ON 4-MAR-2014 @ 15:30

BVOL AND CVOL PRESENTED IN CUBIC FEET
CVOL CALCULATED USING 4.5" CASING
CALIPER VERIFIED IN CASING

THANK YOU FOR CHOOSING BAKER HUGHES WIRELINE
RIG: EXCELL RIG #3
CREW: J. MORTON/S. HOLLAR/C. COATE

EQUIPMENT DATA

RUN	TRIP	TOOL	SERIES NO.	SERIAL NO.	POSITION
1	1	DHPA	4430XB	10161076	FREE
1	1	TIRM	3981XA	10107066	FREE

1	1	WTS	3514XA	10195429	FREE
1	1	DSL	1329XA	10330272	DECENTRALIZED
1	1	CN	2246XA	10068420	DECENTRALIZED
1	1	ZDL	2234XA	10415656	PAD DEVICE - DECENT
1	1	KNJT	3939XA	12396931	FREE
1	1	ML	1243XA	11756187	FREE
1	1	DAL	1677EA/1680MA	117160/172759	CENTRALIZED
1	1	CENT	4341XA	121550	CENTRALIZED
1	1	HDIL	1515EA/1515MA	10326306/364355	STOOD OFF

MAIN LOG 2"/100FT SCALE

ECLIPS 6.2i ECLIPS General Release Rel 6.2i Wed Jun 12 12:21:40 CDT 2013

Updates: 31 Patches: 5

Plotted: Tue Mar 4 17:54:34 2014

PARAMETER AND FILTER SUMMARY REPORT

FILE: /dat1a/083012/n777102.prm
 LOGGING MODE: DEPTH DIRECTION: UP
 TOP DEPTH: 72.222 ft BOTTOM DEPTH: 3814.181 ft

SYMMETRIC FILTER

MEASUREMENT TYPE	PARAMETER	VALUE	UNITS	INTERVAL (ft)	
TENSION	FILTER Ø	medium (1)		TOP	BOTTOM
GR	FILTER Ø	medium (1)		"	"
CALA (3rd CALIPER)	FILTER Ø	medium (1)		"	"
SP-SPDH	FILTER Ø	medium (1)		"	"

BOREHOLE & CEMENT

MEASUREMENT TYPE	PARAMETER	VALUE	UNITS	INTERVAL (ft)	
CASING - BOREHOLE & CEMENT VOLUME	CASING O.D.	4.500	in	TOP	BOTTOM
X-Y COMBINED CALIPER PROCESSING	X-Y Caliper	X-Axis		"	"
BIT SIZE	BIT SIZE	7.875	in	"	"

CURVE DESCRIPTION REPORT

CURVE NAME	CREATION DATE	CURVE DESCRIPTION
F1:BIT	Mar 4 15:21:39 2014	BIT SIZE
F1:BVOL	Mar 4 15:21:39 2014	BOREHOLE VOLUME
F1:CAL	Mar 4 15:21:39 2014	CALIPER
F1:CALA	Mar 4 15:21:39 2014	CALIPER FROM 3104 OR 1233 WITH OTHER CALIPERS IN STRING
F1:CVOL	Mar 4 15:21:39 2014	CEMENT VOLUME
F1:GR	Mar 4 15:21:39 2014	GAMMA RAY
F1:SP	Mar 4 15:21:39 2014	SPONTANEOUS POTENTIAL
F1:TEN	Mar 4 15:21:39 2014	TOTAL TENSION

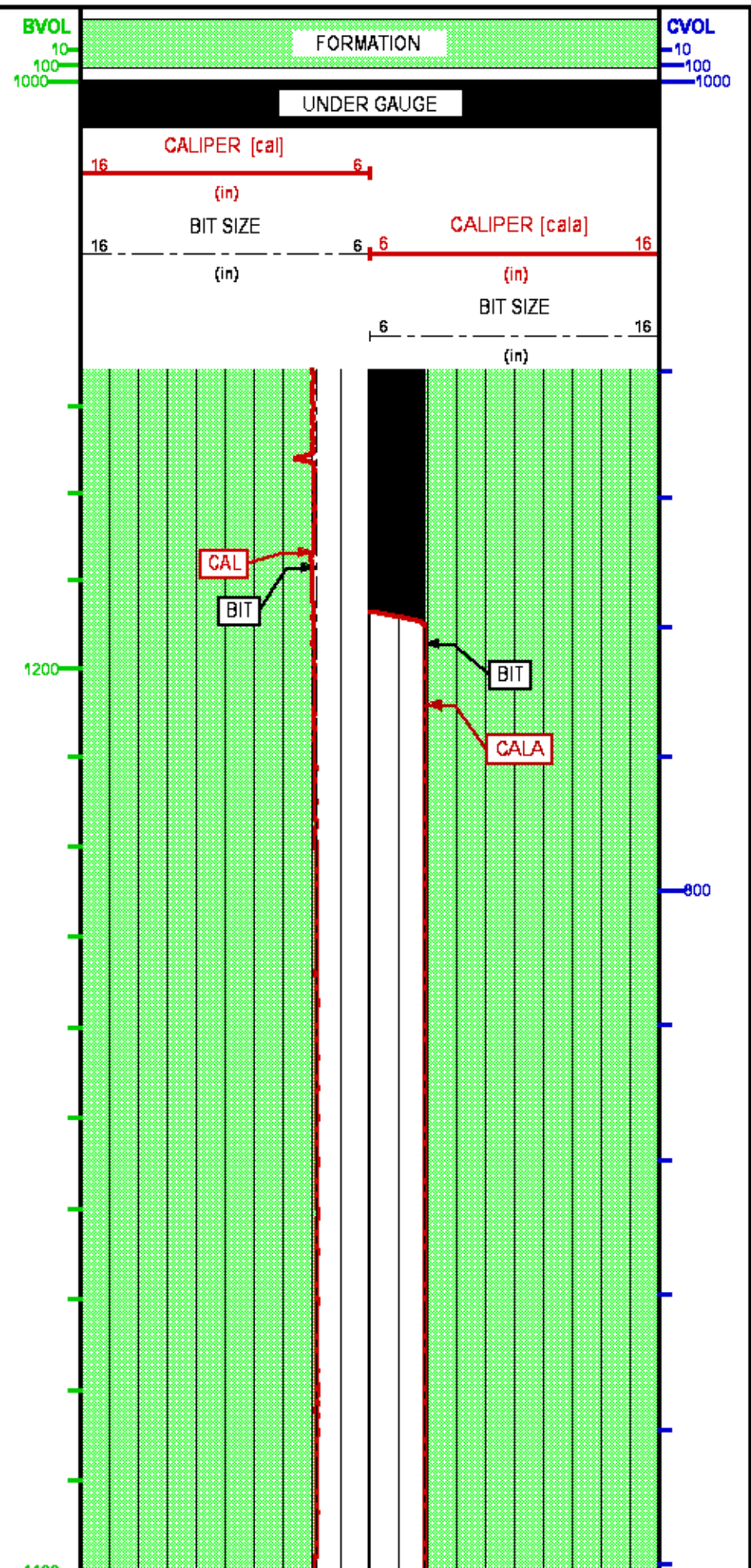
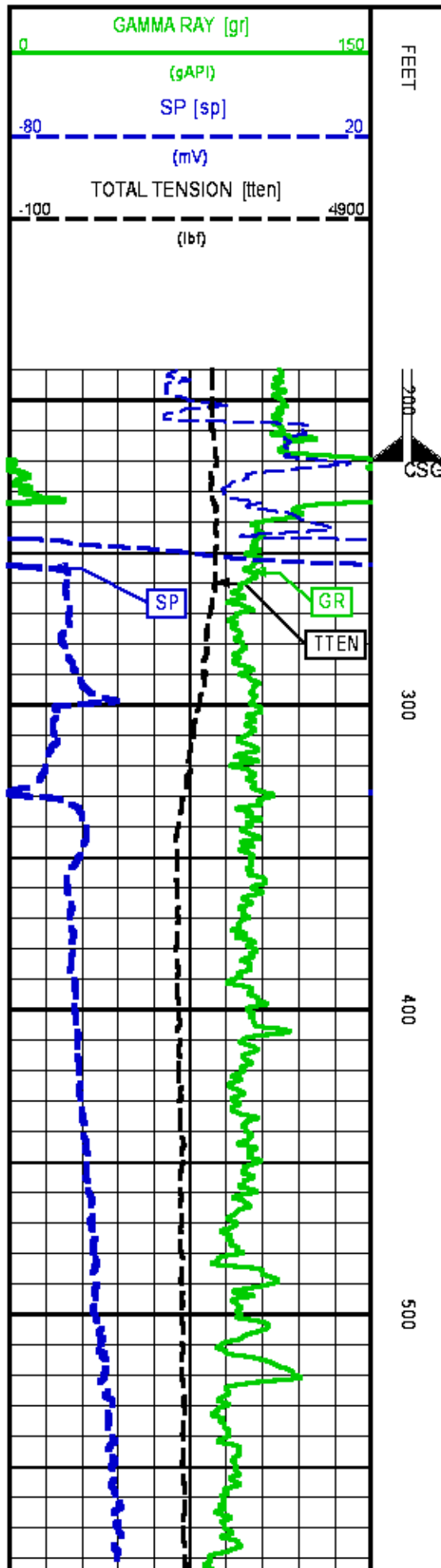
CURVE MEASURE POINT OFFSET

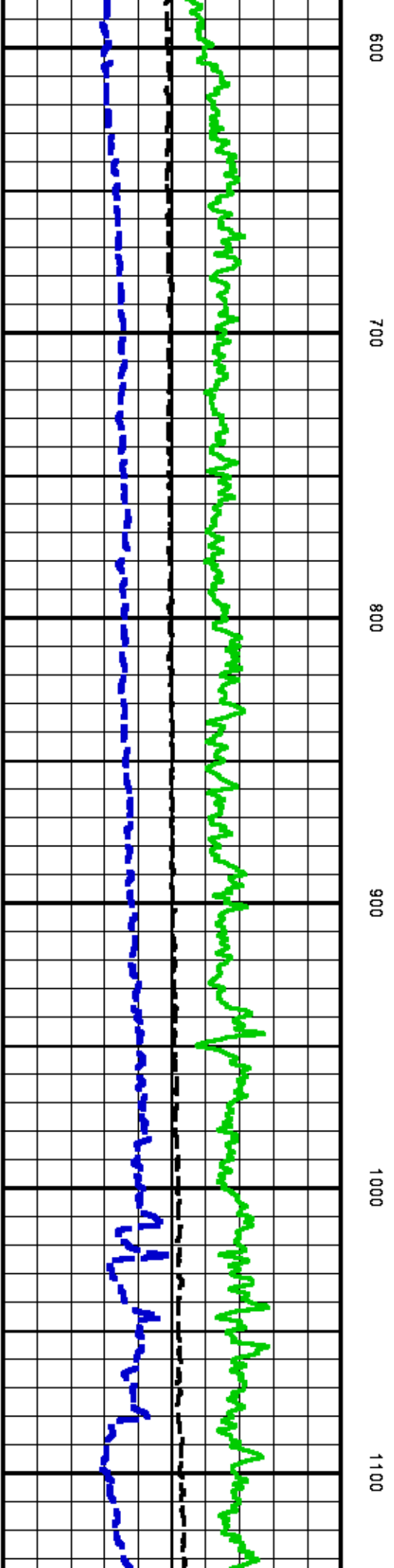
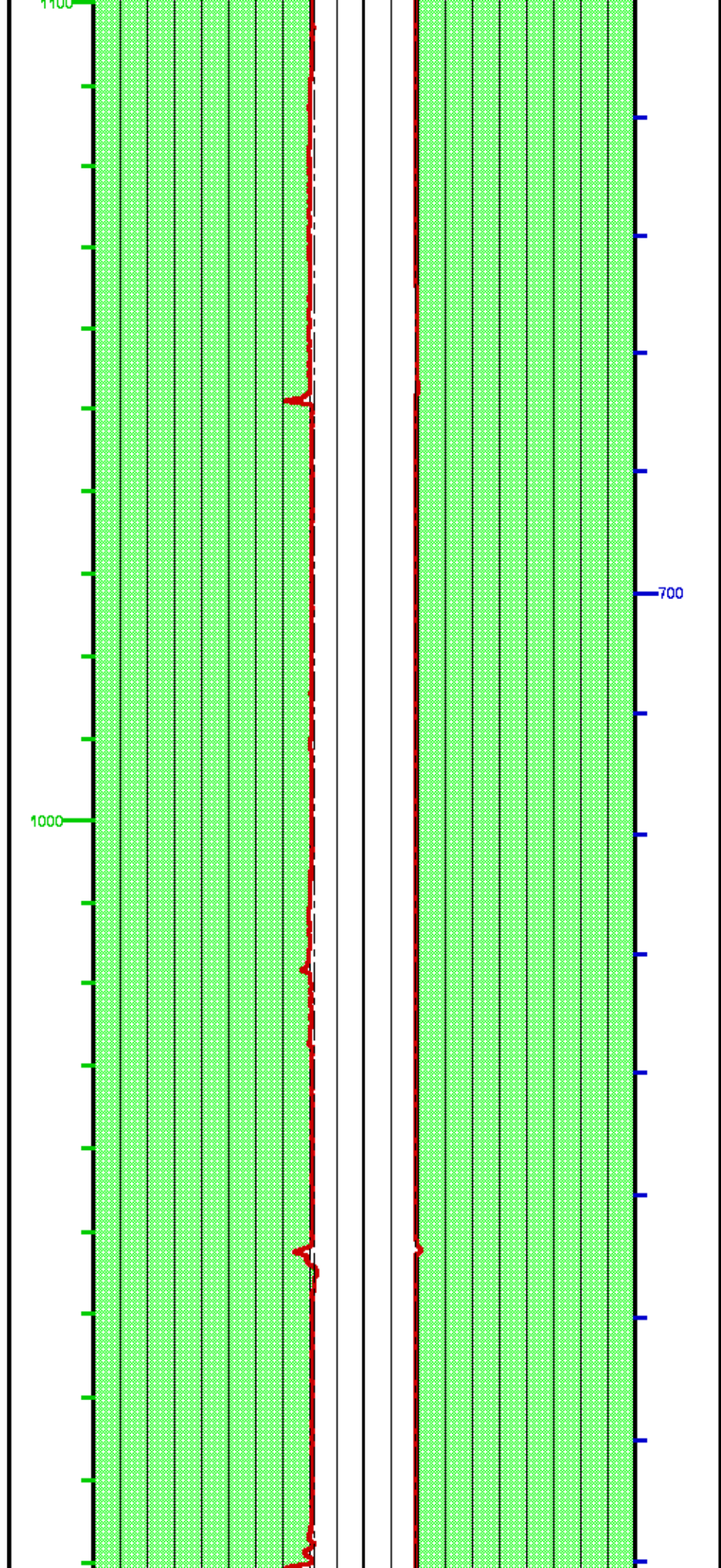
CURVE	OFFSET (ft)	CURVE	OFFSET (ft)	CURVE	OFFSET (ft)	CURVE	OFFSET (ft)
BIT	0.00	CALA	53.25	SP	14.00		
CAL	53.25	GR	88.12	TEN	0.00		

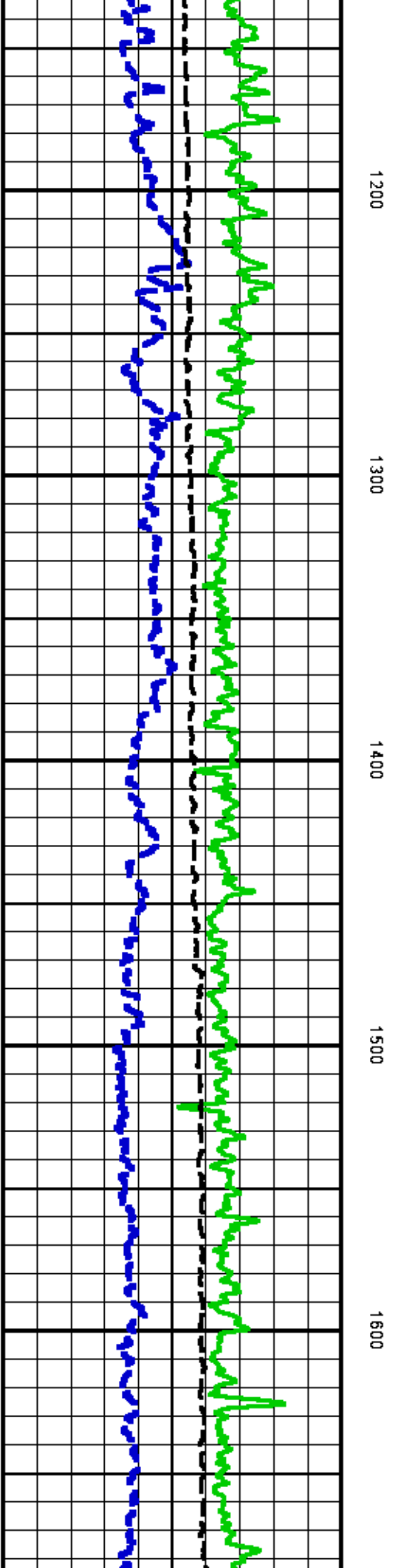
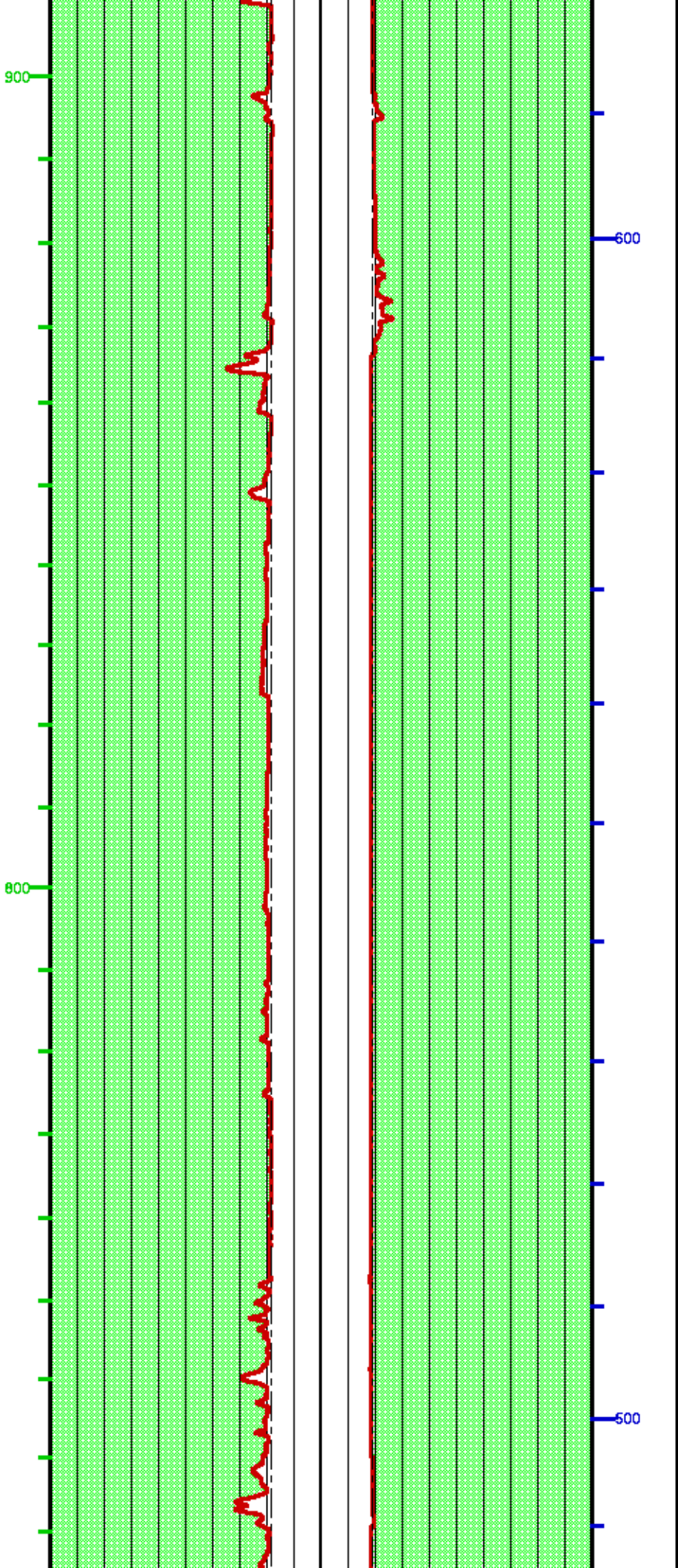
Presentation : HL6670:/dat1a/083012/bhp1cal.fvpdf [2"/100' Scale]
 Plot Interval : 190 - 3814.25 Feet

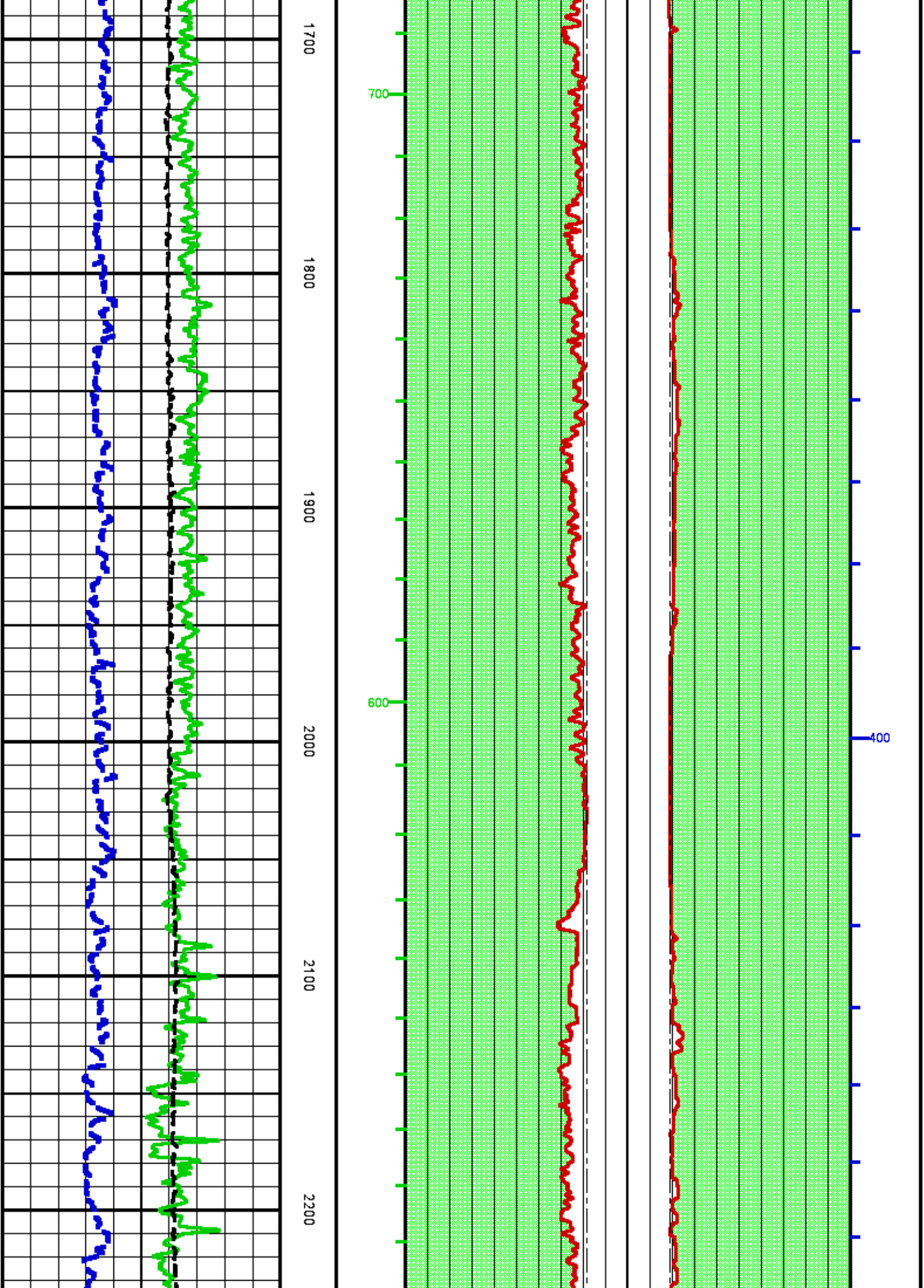
Data File 1 : F1: HL6670:/dat1a/083012/MAIN.xtf
 Created On : Mar 4 15:21:39 2014
 Company : BAYSWATER EXPLORATION AND PRODUCTION

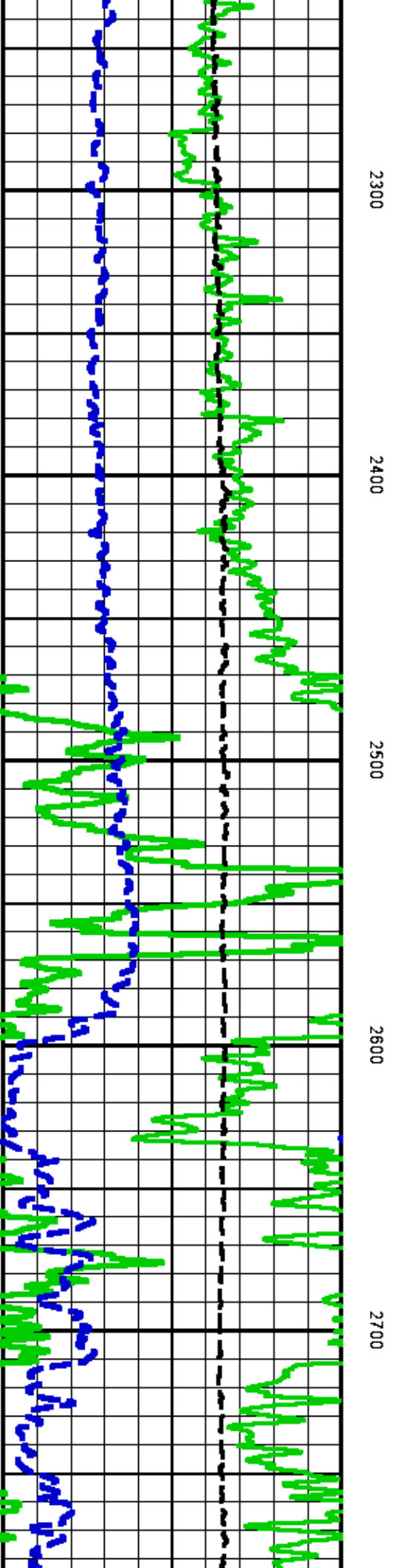
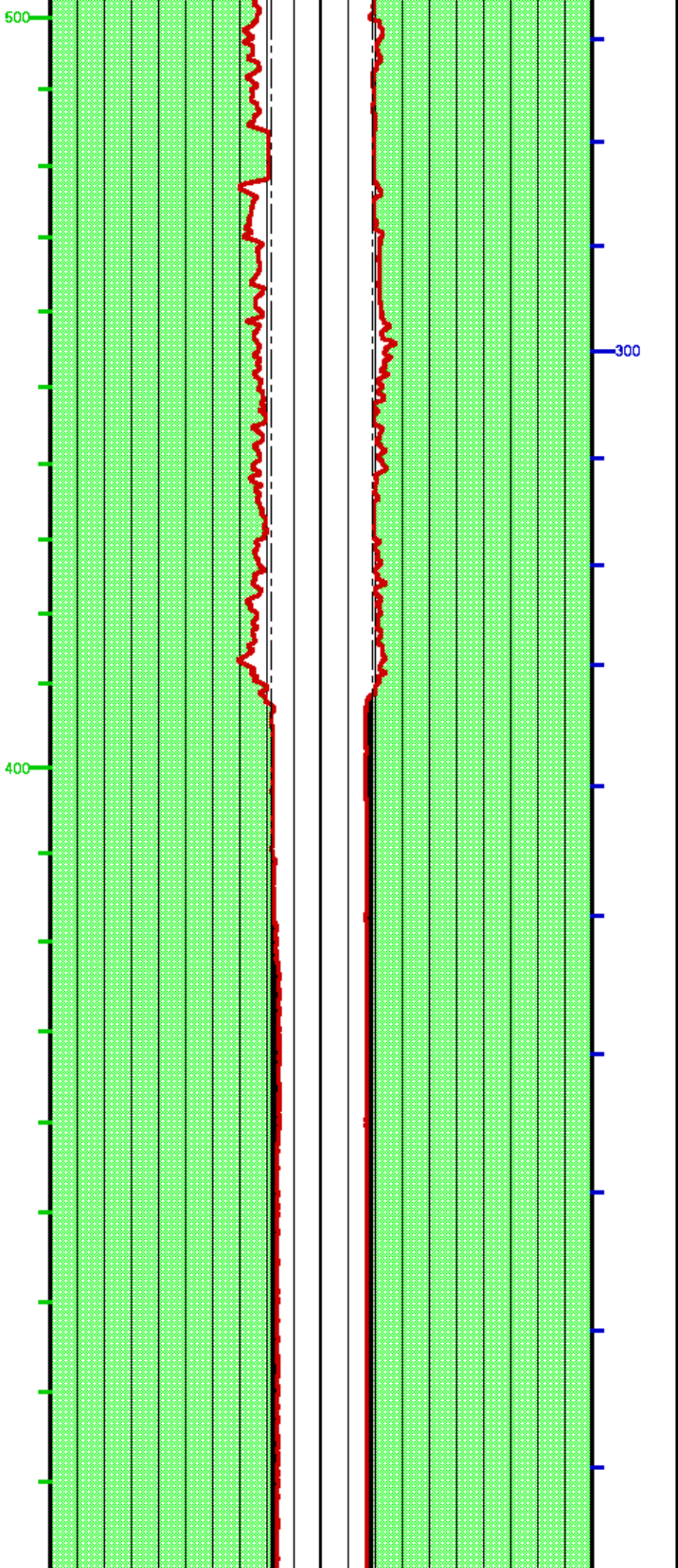
Well : CRAIG #44-18
Field : WILDCAT
File Interval : -28.25 - 3814.25 Feet
OCT : n777I

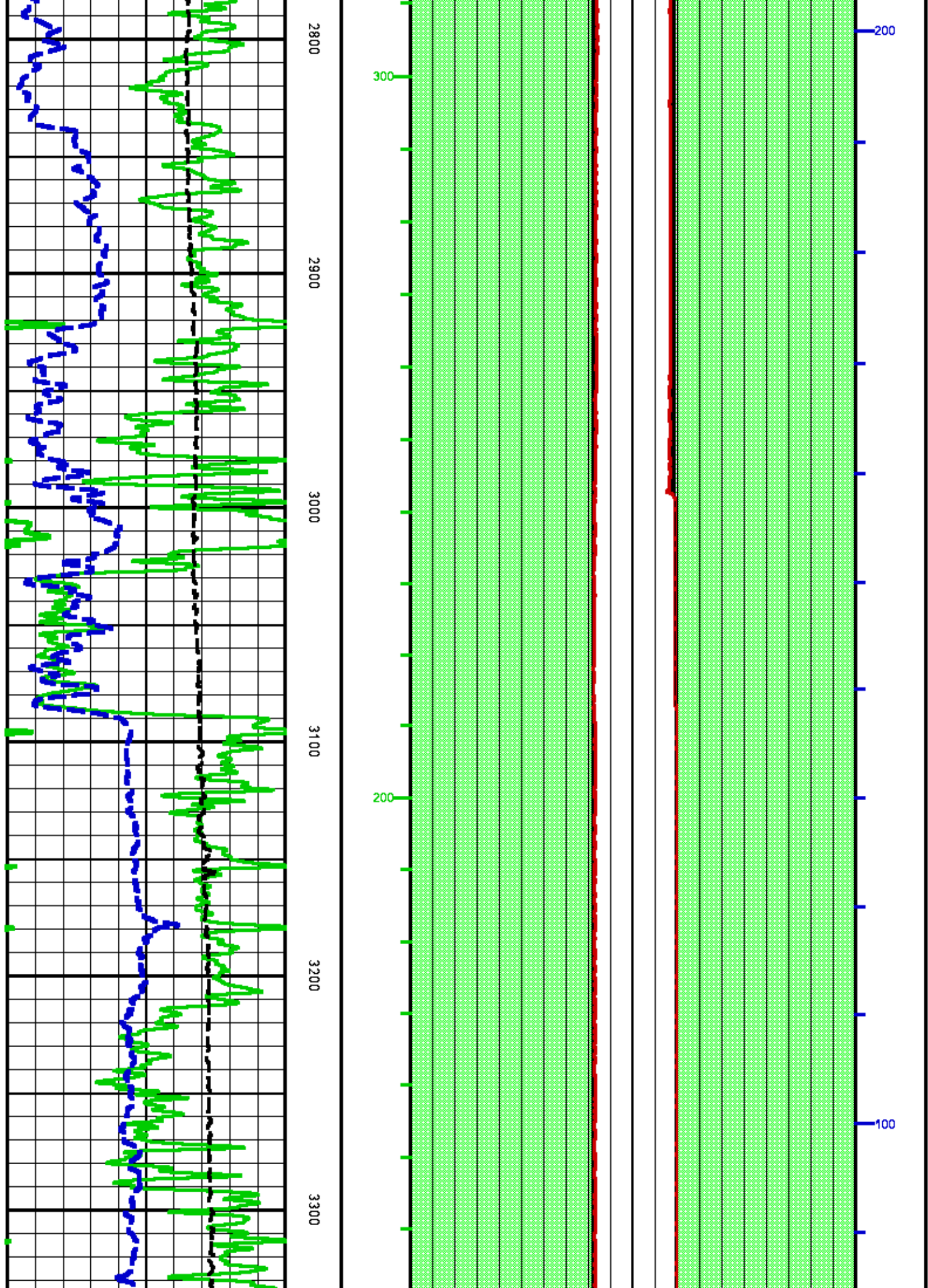


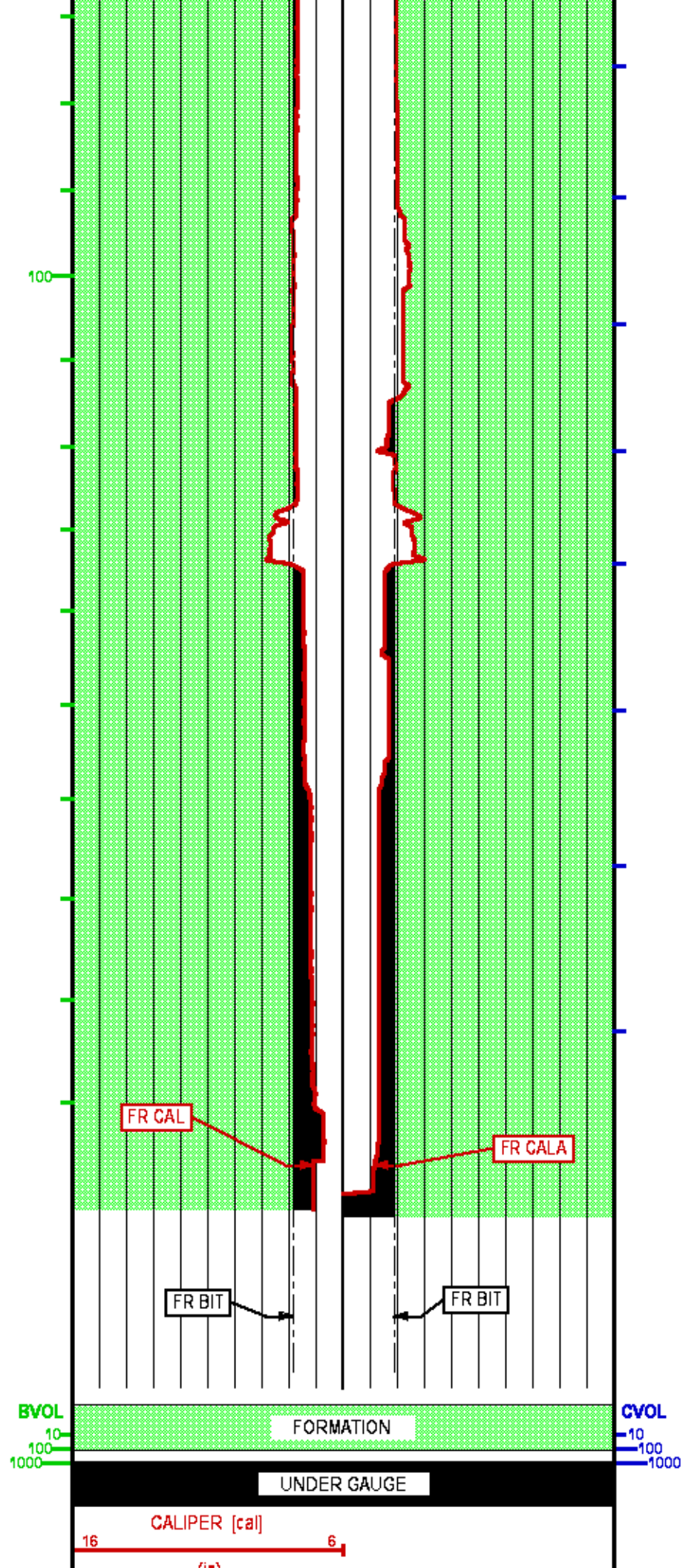
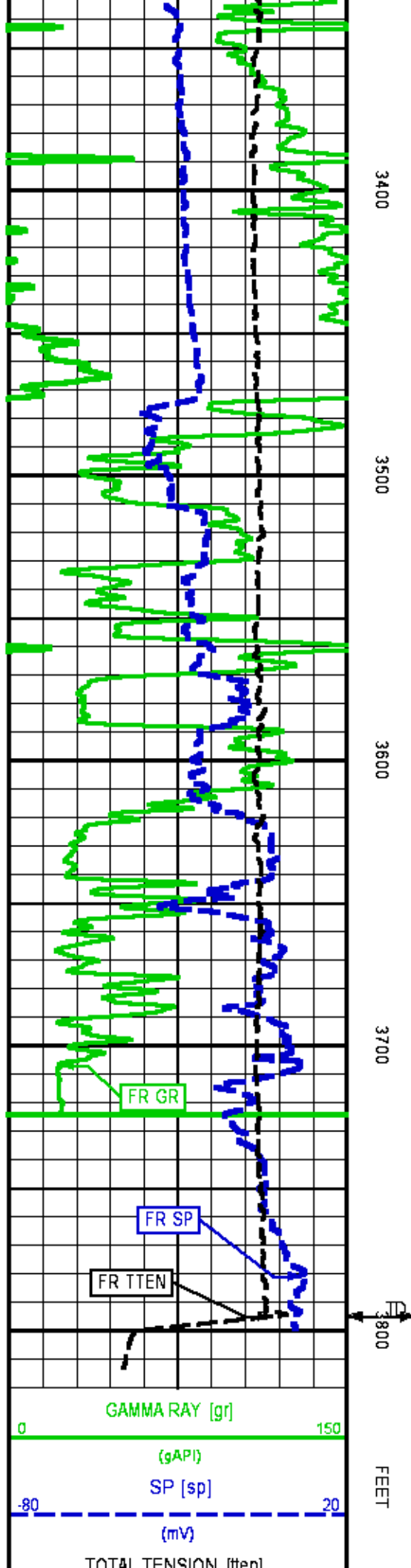













-100 TOWNE TENSION [lbf] 4900	16 BIT SIZE (in)	6 CALIPER [cala] 6 16 (in)
		6 BIT SIZE (in)

	COMPANY <u>BAYSWATER EXPLORATOIN & PRODUCTION</u>	FILE NO: <u>83012</u>
	WELL <u>CRAIG #44-18</u>	API NO: <u>05-121-11041</u>
	FIELD <u>WILDCAT</u>	
	COUNTY <u>WASHINGTON</u> STATE <u>COLORADO</u>	
LOCATION: SHL: 1110' FSL & 962' FEL		ELEVATIONS: KB 4502 FT DF GL 4490 FT
SEC <u>18</u> TWP <u>4S</u> RGE <u>49W</u>		DATE <u>04-Mar-2014</u>

