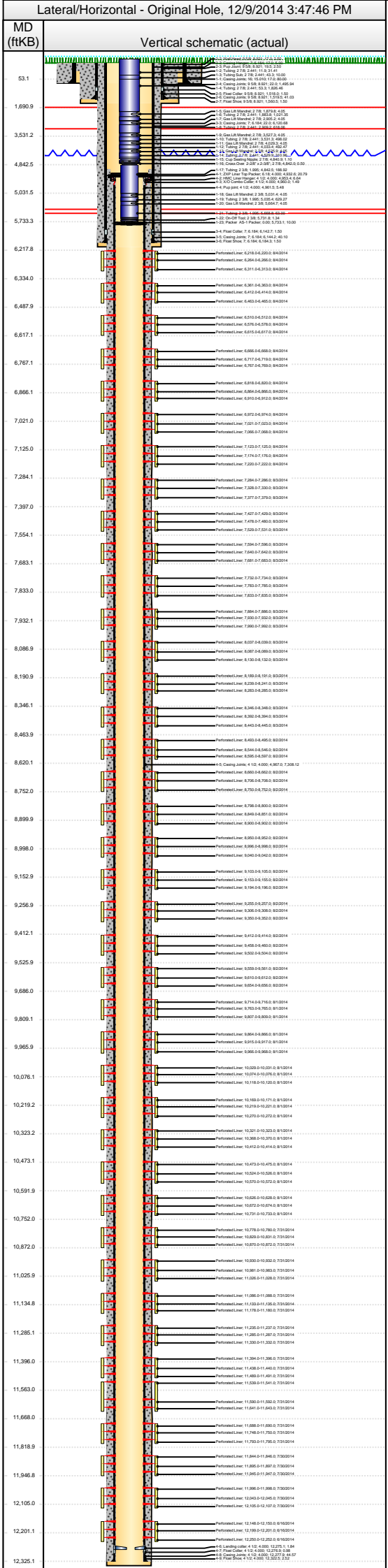




Whiting Oil & Gas Corp
1700 Broadway, Suite 2300
Denver, CO 80290
(303) 837-1661

Completion Report Info -- CR
Well Name: RAZOR FEDERAL 26J-3512B

WPC ID 1C00761025	API Number 05123380450 0	N/S Dist (ft) 2,251.0	N/S Ref FSL	E/W Dist (ft) 1,915.0	E/W Ref FEL	Lot	Quarter 1 NW	Quarter 2 SE	Quarter 3	Quarter 4	Section 26	Township 10	Twnshp...	Range N	Rng E/W... 58 W
Field Name DJ Horizontal Niobrara	County Weld	State CO	Gr Elev (ft) 4,725.60	Orig KB Elv (ft) 4,742.60	KB-Grd (ft) 17.00	Orig Spud Date 3/27/2014	Completion Date 8/5/2014	First Prod Date 8/26/2014							
Operator		Responsible Drilling		Responsible Engineer		Responsible Foreman		Responsible Geology		Well Permit Number					



Rigs		Rig Number		Rig Type		Rig Start Date		Rig Release Date	
Contractor Xtreme		18		Drilling		3/26/2014		4/8/2014	
Date 4/6/2014		Type Drilling		Sub Type TD Date				TD (ft) 12,335.00	
Wellbore Sections									
Section Des		Wellbore Name		Size (in)	Act Top (ft)KB	Act Btm (ft)KB	Start Date		End Date
Conductor		Original Hole		20	17.0	97.0	1/20/2014		1/21/2014
Surface		Original Hole		13 1/2	97.0	1,580.0	3/27/2014		3/27/2014
Intermediate		Original Hole		8 3/4	1,580.0	6,205.0	3/30/2014		4/1/2014
Lateral		Original Hole		6	6,205.0	12,335.0	4/2/2014		4/6/2014
Casing									
Conductor Pipe, 97.0ftKB									
Comment						Run Date 1/22/2014		Pull Date	
OD (in)	Wt (lb/ft)	Grade	Top (ft)KB	Btm (ft)KB	Len (ft)	Item Des			
16	84.00	J-55	17.0	97.0	80.00	Casing Joints			
Surface Csg, 1,562.0ftKB									
Comment 1 Cement Basket						Run Date 3/27/2014		Pull Date	
OD (in)	Wt (lb/ft)	Grade	Top (ft)KB	Btm (ft)KB	Len (ft)	Item Des			
9 5/8	36.00	J-55	17.0	17.0	0.00	Landing Joint			
9 5/8	36.00	J-55	17.0	19.5	2.50	Well Head			
9 5/8	36.00	J-55	19.5	22.0	2.50	Pup Jount			
9 5/8	36.00	J-55	22.0	1,518.0	1,495.94	Casing Joints			
9 5/8	36.00	J-55	1,518.0	1,519.5	1.50	Float Collar			
9 5/8	36.00	J-55	1,519.5	1,560.5	41.03	Casing Joints			
9 5/8	36.00	J-55	1,560.5	1,562.0	1.50	Float Shoe			
Intermediate Csg, 6,185.8ftKB									
Comment						Run Date 4/2/2014		Pull Date	
OD (in)	Wt (lb/ft)	Grade	Top (ft)KB	Btm (ft)KB	Len (ft)	Item Des			
7	29.00	L-80	17.0	17.0	0.00	Landing Joint			
7	29.00	L-80	17.0	22.0	5.00	Casing Hanger			
7	29.00	L-80	22.0	6,142.7	6,120.68	Casing Joints			
7	29.00	L-80	6,142.7	6,144.2	1.50	Float Collar			
7	29.00	L-80	6,144.2	6,184.3	40.10	Casing Joints			
7	29.00	L-80	6,184.3	6,185.8	1.50	Float Shoe			
Liner, 12,325.0ftKB									
Comment						Run Date 4/7/2014		Pull Date	
OD (in)	Wt (lb/ft)	Grade	Top (ft)KB	Btm (ft)KB	Len (ft)	Item Des			
6.184	11.60	L-80	4,932.6	4,953.4	20.79	ZXP Liner Top Packer			
4 1/2	11.60	L-80	4,953.4	4,960.0	6.64	HMC Liner Hanger			
4 1/2	11.60	L-80	4,960.0	4,961.5	1.49	X/O Combo Collar			
4 1/2	11.60	L-80	4,961.5	4,967.0	5.48	Pup joint			
4 1/2	11.60	HCL-80	4,967.0	12,275.1	7,308.12	Casing Joints			
4 1/2			12,275.1	12,276.9	1.84	Landing collar			
4 1/2			12,276.9	12,277.9	0.98	Float Collar			
4 1/2	11.60	HCL-80	12,277.9	12,322.5	44.57	Casing Joints			
4 1/2			12,322.5	12,325.0	2.52	Float Shoe			
Cement									
Description Conductor Cement			Pump Start Date 1/22/2014		Top (ft)KB 17.0	Btm (ft)KB 97.0	Top Meas Meth Returns to Surface		MD Tagged (ft...)
Description Surface Casing Cement			Pump Start Date 3/27/2014		Top (ft)KB 17.0	Btm (ft)KB 1,562.0	Top Meas Meth Returns to Surface		MD Tagged (ft...)
Wellbore Original Hole	Fluid Type Preflush		Amount (sacks)	Class	Est Top (ft)KB	Est Btm (ft)KB	Vol Pumpe... 20.0		
Wellbore Original Hole	Fluid Type Lead Cement		210	G	17.0	985.0	Vol Pumpe... 109.0		
Wellbore Original Hole	Fluid Type Tail Cement		225	G	985.0	1,562.0	Vol Pumpe... 66.0		
Wellbore Original Hole	Fluid Type Displacement		Amount (sacks)	Class	Est Top (ft)KB 17.0	Est Btm (ft)KB 1,562.0	Vol Pumpe... 123.4		
Description Intermediate Casing Cement			Pump Start Date		Top (ft)KB 17.0	Btm (ft)KB 6,185.8	Top Meas Meth Returns to Surface		MD Tagged (ft...)
Wellbore Original Hole	Fluid Type Spacer		Amount (sacks)	Class	Est Top (ft)KB	Est Btm (ft)KB	Vol Pumpe... 20.0		
Wellbore Original Hole	Fluid Type Lead Cement		528	Lite	17.0	4,500.0	Vol Pumpe... 148.1		
Wellbore Original Hole	Fluid Type Tail Cement		251	Lite	4,500.0	6,185.8	Vol Pumpe... 53.2		
Wellbore Original Hole	Fluid Type Displacement		Amount (sacks)	Class	Est Top (ft)KB	Est Btm (ft)KB	Vol Pumpe... 228.0		
Description Liner Cement			Pump Start Date 4/7/2014		Top (ft)KB 4,900.0	Btm (ft)KB 12,325.0	Top Meas Meth Returns to Surface		MD Tagged (ft...)
Wellbore Original Hole	Fluid Type Mud Push		Amount (sacks)	Class	Est Top (ft)KB	Est Btm (ft)KB	Vol Pumpe... 30.0		
Wellbore Original Hole	Fluid Type Primary Cement		460	G	4,900.0	13,235.0	Vol Pumpe... 133.0		
Wellbore Original Hole	Fluid Type KCL Water		Amount (sacks)	Class	Est Top (ft)KB	Est Btm (ft)KB	Vol Pumpe... 163.0		
Wellbore Original Hole	Fluid Type Mud Push		Amount (sacks)	Class	Est Top (ft)KB	Est Btm (ft)KB	Vol Pumpe... 5.0		
Wellbore Original Hole	Fluid Type Displacement KCL Water		Amount (sacks)	Class	Est Top (ft)KB	Est Btm (ft)KB	Vol Pumpe... 134.0		



Whiting Oil & Gas Corp
1700 Broadway, Suite 2300
Denver, CO 80290
(303) 837-1661

Completion Report Info -- CR
Well Name: RAZOR FEDERAL 26J-3512B

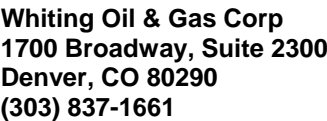
WPC ID	API Number	N/S Dist (ft)	N/S Ref	E/W Dist (ft)	E/W Ref	Lot	Quarter 1	Quarter 2	Quarter 3	Quarter 4	Section	Township	Twnshp...	Range	Rng E/W...	
1CO0761025	051233804500	2,251.0	FSL	1,915.0	FEL		NW	SE			26	10	N	58	W	
Field Name		County		State		Gr Elev (ft)		Orig KB Elev (ft)		KB-Grd (ft)		Orig Spud Date		Completion Date		First Prod Date
DJ Horizontal Niobrara		Weld		CO		4,725.60		4,742.60		17.00		3/27/2014		8/5/2014		8/26/2014
Operator		Responsible Drilling			Responsible Engineer			Responsible Foreman			Responsible Geology			Well Permit Number		
Lateral/Horizontal - Original Hole, 12/9/2014 3:47:48 PM																
MD (ftKB)	Vertical schematic (actual)						Type of Hole	Date	Top (ftKB)	Btm (ftKB)	Zone			Shot Dens (shots/ft)	Calculated Shot Total	
53.1							Perforated Liner	8/4/2014	6,218.0	6,220.0	Niobrara, Original Hole			6.0	13	
1,690.9							Perforated Liner	8/4/2014	6,264.0	6,266.0	Niobrara, Original Hole			6.0	13	
3,531.2							Perforated Liner	8/4/2014	6,311.0	6,313.0	Niobrara, Original Hole			6.0	13	
4,842.5							Perforated Liner	8/4/2014	6,361.0	6,363.0	Niobrara, Original Hole			6.0	13	
5,031.5							Perforated Liner	8/4/2014	6,412.0	6,414.0	Niobrara, Original Hole			6.0	13	
5,733.3							Perforated Liner	8/4/2014	6,463.0	6,465.0	Niobrara, Original Hole			6.0	13	
6,217.8							Perforated Liner	8/4/2014	6,510.0	6,512.0	Niobrara, Original Hole			6.0	13	
6,334.0							Perforated Liner	8/4/2014	6,576.0	6,578.0	Niobrara, Original Hole			6.0	13	
6,487.9							Perforated Liner	8/4/2014	6,615.0	6,617.0	Niobrara, Original Hole			6.0	13	
6,617.1							Perforated Liner	8/4/2014	6,666.0	6,668.0	Niobrara, Original Hole			6.0	13	
6,767.1							Perforated Liner	8/4/2014	6,717.0	6,719.0	Niobrara, Original Hole			6.0	13	
6,866.1							Perforated Liner	8/4/2014	6,767.0	6,769.0	Niobrara, Original Hole			6.0	13	
7,021.0							Perforated Liner	8/4/2014	6,866.0	6,868.0	Niobrara, Original Hole			6.0	13	
7,125.0							Perforated Liner	8/4/2014	6,910.0	6,912.0	Niobrara, Original Hole			6.0	13	
7,284.1							Perforated Liner	8/4/2014	6,972.0	6,974.0	Niobrara, Original Hole			6.0	13	
7,397.0							Perforated Liner	8/4/2014	7,021.0	7,023.0	Niobrara, Original Hole			6.0	13	
7,554.1							Perforated Liner	8/4/2014	7,066.0	7,068.0	Niobrara, Original Hole			6.0	13	
7,683.1							Perforated Liner	8/4/2014	7,123.0	7,125.0	Niobrara, Original Hole			6.0	13	
7,833.0							Perforated Liner	8/4/2014	7,174.0	7,176.0	Niobrara, Original Hole			6.0	13	
7,932.1							Perforated Liner	8/4/2014	7,220.0	7,222.0	Niobrara, Original Hole			6.0	13	
8,086.9							Perforated Liner	8/4/2014	7,284.0	7,286.0	Niobrara, Original Hole			6.0	13	
8,190.9							Perforated Liner	8/4/2014	7,328.0	7,330.0	Niobrara, Original Hole			6.0	13	
8,346.1							Perforated Liner	8/4/2014	7,377.0	7,379.0	Niobrara, Original Hole			6.0	13	
8,463.9							Perforated Liner	8/4/2014	7,427.0	7,429.0	Niobrara, Original Hole			6.0	13	
8,620.1							Perforated Liner	8/4/2014	7,478.0	7,480.0	Niobrara, Original Hole			6.0	13	
8,752.0							Perforated Liner	8/4/2014	7,529.0	7,531.0	Niobrara, Original Hole			6.0	13	
8,899.9							Perforated Liner	8/4/2014	7,584.0	7,586.0	Niobrara, Original Hole			6.0	13	
8,998.0							Perforated Liner	8/4/2014	7,640.0	7,642.0	Niobrara, Original Hole			6.0	13	
9,152.9							Perforated Liner	8/3/2014	7,681.0	7,683.0	Niobrara, Original Hole			6.0	13	
9,256.9							Perforated Liner	8/3/2014	7,732.0	7,734.0	Niobrara, Original Hole			6.0	13	
9,412.1							Perforated Liner	8/3/2014	7,785.0	7,787.0	Niobrara, Original Hole			6.0	13	
9,525.9							Perforated Liner	8/3/2014	7,833.0	7,835.0	Niobrara, Original Hole			6.0	13	
9,686.0							Perforated Liner	8/3/2014	7,884.0	7,886.0	Niobrara, Original Hole			6.0	13	
9,809.1							Perforated Liner	8/3/2014	7,930.0	7,932.0	Niobrara, Original Hole			6.0	13	
9,965.9							Perforated Liner	8/3/2014	7,980.0	7,982.0	Niobrara, Original Hole			6.0	13	
10,076.1							Perforated Liner	8/3/2014	8,037.0	8,039.0	Niobrara, Original Hole			6.0	13	
10,219.2							Perforated Liner	8/3/2014	8,087.0	8,089.0	Niobrara, Original Hole			6.0	13	
10,323.2							Perforated Liner	8/3/2014	8,140.0	8,142.0	Niobrara, Original Hole			6.0	13	
10,473.1							Perforated Liner	8/3/2014	8,195.0	8,197.0	Niobrara, Original Hole			6.0	13	
10,591.9							Perforated Liner	8/3/2014	8,250.0	8,252.0	Niobrara, Original Hole			6.0	13	
10,752.0							Perforated Liner	8/3/2014	8,307.0	8,309.0	Niobrara, Original Hole			6.0	13	
10,872.0							Perforated Liner	8/3/2014	8,364.0	8,366.0	Niobrara, Original Hole			6.0	13	
11,025.9							Perforated Liner	8/3/2014	8,422.0	8,424.0	Niobrara, Original Hole			6.0	13	
11,134.8							Perforated Liner	8/3/2014	8,480.0	8,482.0	Niobrara, Original Hole			6.0	13	
11,285.1							Perforated Liner	8/3/2014	8,539.0	8,541.0	Niobrara, Original Hole			6.0	13	
11,396.0							Perforated Liner	8/3/2014	8,599.0	8,601.0	Niobrara, Original Hole			6.0	13	
11,563.0							Perforated Liner	8/3/2014	8,659.0	8,661.0	Niobrara, Original Hole			6.0	13	
11,668.0							Perforated Liner	8/3/2014	8,720.0	8,722.0	Niobrara, Original Hole			6.0	13	
11,818.9							Perforated Liner	8/3/2014	8,781.0	8,783.0	Niobrara, Original Hole			6.0	13	
11,946.8							Perforated Liner	8/3/2014	8,842.0	8,844.0	Niobrara, Original Hole			6.0	13	
12,105.0							Perforated Liner	8/3/2014	8,903.0	8,905.0	Niobrara, Original Hole			6.0	13	
12,201.1							Perforated Liner	8/3/2014	8,964.0	8,966.0	Niobrara, Original Hole			6.0	13	
12,325.1							Perforated Liner	8/3/2014	9,025.0	9,027.0	Niobrara, Original Hole			6.0	13	



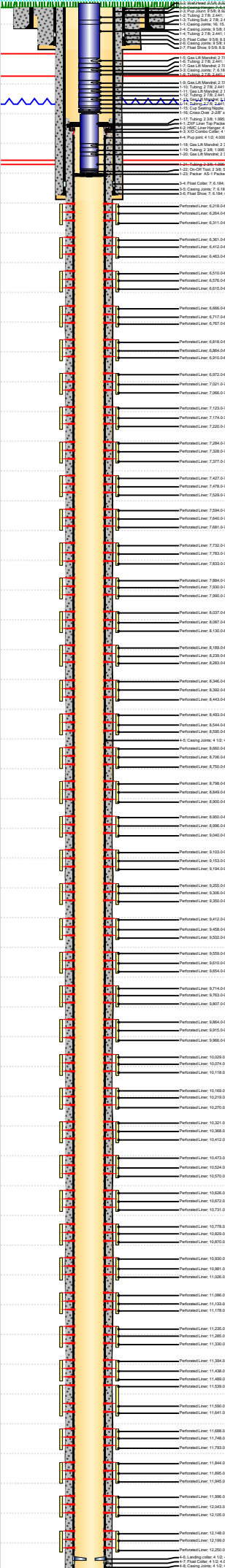
Completion Report Info -- CR

Well Name: RAZOR FEDERAL 26J-3512B

WPC ID 1CO0761025		API Number 051233804500		N/S Dist (ft) 2,251.0		N/S Ref FSL		E/W Dist (ft) 1,915.0		E/W Ref FEL		Lot	Quarter 1 NW	Quarter 2 SE	Quarter 3	Quarter 4	Section 26	Township 10 N	Twnshp... N	Range 58	Rng EW... W		
Field Name DJ Horizontal Niobrara				County Weld				State CO		Gr Elev (ft) 4,725.60		Orig KB Elv (ft) 4,742.60		KB-Grd (ft) 17.00		Orig Spud Date 3/27/2014		Completion Date 8/5/2014		First Prod Date 8/26/2014			
Operator				Responsible Drilling				Responsible Engineer				Responsible Foreman				Responsible Geology				Well Permit Number			
Lateral/Horizontal - Original Hole, 12/9/2014 3:47:50 PM																							
MD (ftKB)		Vertical schematic (actual)												Type of Hole	Date	Top (ftKB)	Btm (ftKB)	Zone				Shot Dens (shots/ft)	Calcula ted Shot Total
53.1														Perforated Liner	8/3/2014	8,130.0	8,132.0	Niobrara, Original Hole				6.0	13
1,690.9														Perforated Liner	8/3/2014	8,189.0	8,191.0	Niobrara, Original Hole				6.0	13
3,531.2														Perforated Liner	8/3/2014	8,239.0	8,241.0	Niobrara, Original Hole				6.0	13
4,842.5														Perforated Liner	8/3/2014	8,283.0	8,285.0	Niobrara, Original Hole				6.0	13
5,031.5														Perforated Liner	8/3/2014	8,283.0	8,285.0	Niobrara, Original Hole				6.0	13
5,733.3														Perforated Liner	8/3/2014	8,346.0	8,348.0	Niobrara, Original Hole				6.0	13
6,217.8														Perforated Liner	8/3/2014	8,392.0	8,394.0	Niobrara, Original Hole				6.0	13
6,334.0														Perforated Liner	8/3/2014	8,443.0	8,445.0	Niobrara, Original Hole				6.0	13
6,467.9														Perforated Liner	8/3/2014	8,443.0	8,445.0	Niobrara, Original Hole				6.0	13
6,617.1														Perforated Liner	8/2/2014	8,493.0	8,495.0	Niobrara, Original Hole				6.0	13
6,767.1														Perforated Liner	8/2/2014	8,544.0	8,546.0	Niobrara, Original Hole				6.0	13
6,866.1														Perforated Liner	8/2/2014	8,544.0	8,546.0	Niobrara, Original Hole				6.0	13
7,021.0														Perforated Liner	8/2/2014	8,595.0	8,597.0	Niobrara, Original Hole				6.0	13
7,125.0														Perforated Liner	8/2/2014	8,660.0	8,662.0	Niobrara, Original Hole				6.0	13
7,284.1														Perforated Liner	8/2/2014	8,706.0	8,708.0	Niobrara, Original Hole				6.0	13
7,397.0														Perforated Liner	8/2/2014	8,706.0	8,708.0	Niobrara, Original Hole				6.0	13
7,554.1														Perforated Liner	8/2/2014	8,750.0	8,752.0	Niobrara, Original Hole				6.0	13
7,683.1														Perforated Liner	8/2/2014	8,798.0	8,800.0	Niobrara, Original Hole				6.0	13
7,833.0														Perforated Liner	8/2/2014	8,798.0	8,800.0	Niobrara, Original Hole				6.0	13
7,932.1														Perforated Liner	8/2/2014	8,849.0	8,851.0	Niobrara, Original Hole				6.0	13
8,086.9														Perforated Liner	8/2/2014	8,900.0	8,902.0	Niobrara, Original Hole				6.0	13
8,190.9														Perforated Liner	8/2/2014	8,950.0	8,952.0	Niobrara, Original Hole				6.0	13
8,346.1														Perforated Liner	8/2/2014	8,950.0	8,952.0	Niobrara, Original Hole				6.0	13
8,463.9														Perforated Liner	8/2/2014	8,996.0	8,998.0	Niobrara, Original Hole				6.0	13
8,620.1														Perforated Liner	8/2/2014	9,040.0	9,042.0	Niobrara, Original Hole				6.0	13
8,752.0														Perforated Liner	8/2/2014	9,103.0	9,105.0	Niobrara, Original Hole				6.0	13
8,899.9														Perforated Liner	8/2/2014	9,103.0	9,105.0	Niobrara, Original Hole				6.0	13
8,986.0														Perforated Liner	8/2/2014	9,153.0	9,155.0	Niobrara, Original Hole				6.0	13
9,152.9														Perforated Liner	8/2/2014	9,194.0	9,196.0	Niobrara, Original Hole				6.0	13
9,256.9														Perforated Liner	8/2/2014	9,255.0	9,257.0	Niobrara, Original Hole				6.0	13
9,412.1														Perforated Liner	8/2/2014	9,255.0	9,257.0	Niobrara, Original Hole				6.0	13
9,525.9														Perforated Liner	8/2/2014	9,306.0	9,308.0	Niobrara, Original Hole				6.0	13
9,686.0														Perforated Liner	8/2/2014	9,350.0	9,352.0	Niobrara, Original Hole				6.0	13
9,809.1														Perforated Liner	8/2/2014	9,412.0	9,414.0	Niobrara, Original Hole				6.0	13
9,965.9														Perforated Liner	8/2/2014	9,412.0	9,414.0	Niobrara, Original Hole				6.0	13
10,076.1														Perforated Liner	8/2/2014	9,458.0	9,460.0	Niobrara, Original Hole				6.0	13
10,219.2														Perforated Liner	8/2/2014	9,502.0	9,504.0	Niobrara, Original Hole				6.0	13
10,323.2														Perforated Liner	8/2/2014	9,502.0	9,504.0	Niobrara, Original Hole				6.0	13
10,473.1														Perforated Liner	8/2/2014	9,559.0	9,561.0	Niobrara, Original Hole				6.0	13
10,591.9														Perforated Liner	8/2/2014	9,610.0	9,612.0	Niobrara, Original Hole				6.0	13
10,752.0														Perforated Liner	8/2/2014	9,654.0	9,656.0	Niobrara, Original Hole				6.0	13
10,872.0														Perforated Liner	8/2/2014	9,654.0	9,656.0	Niobrara, Original Hole				6.0	13
11,025.9														Perforated Liner	8/1/2014	9,714.0	9,716.0	Niobrara, Original Hole				6.0	13
11,134.8														Perforated Liner	8/1/2014	9,763.0	9,765.0	Niobrara, Original Hole				6.0	13
11,285.1														Perforated Liner	8/1/2014	9,807.0	9,809.0	Niobrara, Original Hole				6.0	13
11,396.0														Perforated Liner	8/1/2014	9,864.0	9,866.0	Niobrara, Original Hole				6.0	13
11,563.0														Perforated Liner	8/1/2014	9,915.0	9,917.0	Niobrara, Original Hole				6.0	13
11,668.0														Perforated Liner	8/1/2014	9,915.0	9,917.0	Niobrara, Original Hole				6.0	13
11,818.9														Perforated Liner	8/1/2014	9,966.0	9,968.0	Niobrara, Original Hole				6.0	13
11,946.8														Perforated Liner	8/1/2014	9,966.0	9,968.0	Niobrara, Original Hole				6.0	13
12,105.0														Perforated Liner	8/1/2014	10,029.0	10,031.0	Niobrara, Original Hole				6.0	13
12,201.1														Perforated Liner	8/1/2014	10,029.0	10,031.0	Niobrara, Original Hole				6.0	13
12,325.1														Perforated Liner	8/1/2014	10,029.0	10,031.0	Niobrara, Original Hole				6.0	13



Well Name: RAZOR FEDERAL 26J-3512B

WPC ID 1CO0761025	API Number 051233804500	N/S Dist (ft) 2,251.0	N/S Ref FSL	E/W Dist (ft) 1,915.0	E/W Ref FEL	Lot	Quarter 1 NW	Quarter 2 SE	Quarter 3	Quarter 4	Section 26	Township 10 N	Twnshp... N	Range 58	Rng EW... W			
Field Name DJ Horizontal Niobrara		County Weld		State CO			Gr Elev (ft) 4,725.60		Orig KB Elev (ft) 4,742.60		KB-Grd (ft) 17.00		Orig Spud Date 3/27/2014		Completion Date 8/5/2014		First Prod Date 8/26/2014	
Operator		Responsible Drilling			Responsible Engineer			Responsible Foreman			Responsible Geology			Well Permit Number				
Lateral/Horizontal - Original Hole, 12/9/2014 3:47:52 PM																		
MD (ftKB)	Vertical schematic (actual)						Type of Hole	Date	Top (ftKB)	Btm (ftKB)	Zone		Shot Dens (shots/ft)	Calcula ted Shot Total				
53.1							Perforated Liner	8/1/2014	10,074.0	10,076.0	Niobrara, Original Hole		6.0	13				
1,690.9							Perforated Liner	8/1/2014	10,118.0	10,120.0	Niobrara, Original Hole		6.0	13				
3,531.2							Perforated Liner	8/1/2014	10,169.0	10,171.0	Niobrara, Original Hole		6.0	13				
4,842.5							Perforated Liner	8/1/2014	10,219.0	10,221.0	Niobrara, Original Hole		6.0	13				
5,031.5							Perforated Liner	8/1/2014	10,270.0	10,272.0	Niobrara, Original Hole		6.0	13				
5,733.3							Perforated Liner	8/1/2014	10,321.0	10,323.0	Niobrara, Original Hole		6.0	13				
6,217.8							Perforated Liner	8/1/2014	10,321.0	10,323.0	Niobrara, Original Hole		6.0	13				
6,334.0							Perforated Liner	8/1/2014	10,368.0	10,370.0	Niobrara, Original Hole		6.0	13				
6,467.9							Perforated Liner	8/1/2014	10,412.0	10,414.0	Niobrara, Original Hole		6.0	13				
6,617.1							Perforated Liner	8/1/2014	10,473.0	10,475.0	Niobrara, Original Hole		6.0	13				
6,767.1							Perforated Liner	8/1/2014	10,524.0	10,526.0	Niobrara, Original Hole		6.0	13				
6,866.1							Perforated Liner	8/1/2014	10,570.0	10,572.0	Niobrara, Original Hole		6.0	13				
7,021.0							Perforated Liner	8/1/2014	10,626.0	10,628.0	Niobrara, Original Hole		6.0	13				
7,125.0							Perforated Liner	8/1/2014	10,672.0	10,674.0	Niobrara, Original Hole		6.0	13				
7,284.1							Perforated Liner	8/1/2014	10,731.0	10,733.0	Niobrara, Original Hole		6.0	13				
7,397.0							Perforated Liner	8/1/2014	10,778.0	10,780.0	Niobrara, Original Hole		6.0	13				
7,554.1							Perforated Liner	8/1/2014	10,829.0	10,831.0	Niobrara, Original Hole		6.0	13				
7,683.1							Perforated Liner	8/1/2014	10,870.0	10,872.0	Niobrara, Original Hole		6.0	13				
7,833.0							Perforated Liner	8/1/2014	10,930.0	10,932.0	Niobrara, Original Hole		6.0	13				
7,932.1							Perforated Liner	7/31/2014	10,981.0	10,983.0	Niobrara, Original Hole		6.0	13				
8,086.9							Perforated Liner	7/31/2014	10,981.0	10,983.0	Niobrara, Original Hole		6.0	13				
8,190.9							Perforated Liner	7/31/2014	10,930.0	10,932.0	Niobrara, Original Hole		6.0	13				
8,346.1							Perforated Liner	7/31/2014	10,870.0	10,872.0	Niobrara, Original Hole		6.0	13				
8,463.9							Perforated Liner	7/31/2014	10,829.0	10,831.0	Niobrara, Original Hole		6.0	13				
8,620.1							Perforated Liner	7/31/2014	10,778.0	10,780.0	Niobrara, Original Hole		6.0	13				
8,752.0							Perforated Liner	7/31/2014	10,729.0	10,731.0	Niobrara, Original Hole		6.0	13				
8,899.9							Perforated Liner	7/31/2014	10,679.0	10,681.0	Niobrara, Original Hole		6.0	13				
9,096.0							Perforated Liner	7/31/2014	10,629.0	10,631.0	Niobrara, Original Hole		6.0	13				
9,152.9							Perforated Liner	7/31/2014	10,579.0	10,581.0	Niobrara, Original Hole		6.0	13				
9,256.9							Perforated Liner	7/31/2014	10,529.0	10,531.0	Niobrara, Original Hole		6.0	13				
9,412.1							Perforated Liner	7/31/2014	10,479.0	10,481.0	Niobrara, Original Hole		6.0	13				
9,525.9							Perforated Liner	7/31/2014	10,429.0	10,431.0	Niobrara, Original Hole		6.0	13				
9,686.0							Perforated Liner	7/31/2014	10,379.0	10,381.0	Niobrara, Original Hole		6.0	13				
9,809.1							Perforated Liner	7/31/2014	10,329.0	10,331.0	Niobrara, Original Hole		6.0	13				
9,965.9							Perforated Liner	7/31/2014	10,279.0	10,281.0	Niobrara, Original Hole		6.0	13				
10,076.1							Perforated Liner	7/31/2014	10,229.0	10,231.0	Niobrara, Original Hole		6.0	13				
10,219.2							Perforated Liner	7/31/2014	10,179.0	10,181.0	Niobrara, Original Hole		6.0	13				
10,323.2							Perforated Liner	7/31/2014	10,129.0	10,131.0	Niobrara, Original Hole		6.0	13				
10,473.1							Perforated Liner	7/31/2014	10,079.0	10,081.0	Niobrara, Original Hole		6.0	13				
10,591.9							Perforated Liner	7/31/2014	10,029.0	10,031.0	Niobrara, Original Hole		6.0	13				
10,752.0							Perforated Liner	7/31/2014	9,979.0	9,981.0	Niobrara, Original Hole		6.0	13				
10,872.0							Perforated Liner	7/31/2014	9,929.0	9,931.0	Niobrara, Original Hole		6.0	13				
11,025.9							Perforated Liner	7/31/2014	9,879.0	9,881.0	Niobrara, Original Hole		6.0	13				
11,134.8							Perforated Liner	7/31/2014	9,829.0	9,831.0	Niobrara, Original Hole		6.0	13				
11,285.1							Perforated Liner	7/31/2014	9,779.0	9,781.0	Niobrara, Original Hole		6.0	13				
11,396.0							Perforated Liner	7/31/2014	9,729.0	9,731.0	Niobrara, Original Hole		6.0	13				
11,563.0							Perforated Liner	7/31/2014	9,679.0	9,681.0	Niobrara, Original Hole		6.0	13				
11,668.0							Perforated Liner	7/30/2014	9,629.0	9,631.0	Niobrara, Original Hole		6.0	13				
11,818.9							Perforated Liner	7/30/2014	9,579.0	9,581.0	Niobrara, Original Hole		6.0	13				
11,946.8							Perforated Liner	7/30/2014	9,529.0	9,531.0	Niobrara, Original Hole		6.0	13				
12,105.0							Perforated Liner	7/30/2014	9,479.0	9,481.0	Niobrara, Original Hole		6.0	13				
12,201.1							Perforated Liner	7/30/2014	9,429.0	9,431.0	Niobrara, Original Hole		6.0	13				
12,325.1							Perforated Liner	7/30/2014	9,379.0	9,381.0	Niobrara, Original Hole		6.0	13				



Whiting Oil & Gas Corp
1700 Broadway, Suite 2300
Denver, CO 80290
(303) 837-1661

Completion Report Info -- CR
Well Name: RAZOR FEDERAL 26J-3512B

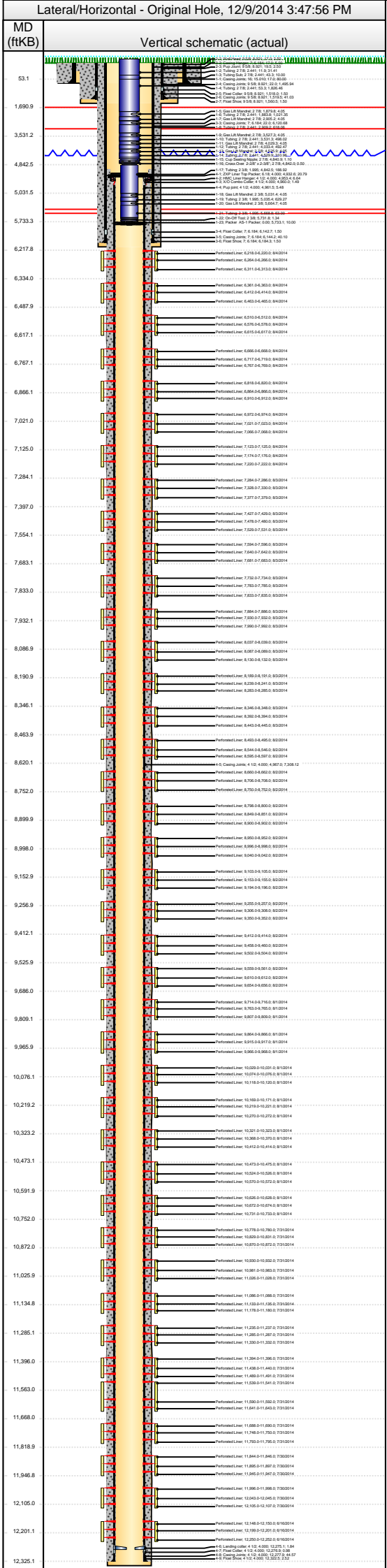
WPC ID 1C00761025	API Number 051233804500	N/S Dist (ft) 2,251.0	N/S Ref FSL	E/W Dist (ft) 1,915.0	E/W Ref FEL	Lot	Quarter 1 NW	Quarter 2 SE	Quarter 3	Quarter 4	Section 26	Township 10 N	Twnshp...	Range 58	Rng E/W...							
Field Name DJ Horizontal Niobrara		County Weld		State CO		Gr Elev (ft) 4,725.60		Orig KB Elv (ft) 4,742.60		KB-Grd (ft) 17.00		Orig Spud Date 3/27/2014		Completion Date 8/5/2014		First Prod Date 8/26/2014						
Operator		Responsible Drilling			Responsible Engineer			Responsible Foreman			Responsible Geology			Well Permit Number								
Lateral/Horizontal - Original Hole, 12/9/2014 3:47:54 PM																						
MD (ftKB)	Vertical schematic (actual)						Type of Hole	Date	Top (ftKB)	Btm (ftKB)	Zone						Shot Dens (shots/ft)	Calculated Shot Total				
53.1							Perforated Liner	7/30/2014	11,996.0	11,998.0	Niobrara, Original Hole						6.0	13				
1,690.9							Perforated Liner	7/30/2014	12,043.0	12,045.0	Niobrara, Original Hole						6.0	13				
3,531.2							Perforated Liner	7/30/2014	12,105.0	12,107.0	Niobrara, Original Hole						6.0	13				
4,842.5							Perforated Liner	6/16/2014	12,148.0	12,150.0	Niobrara, Original Hole						6.0	13				
5,031.5							Perforated Liner	6/16/2014	12,199.0	12,201.0	Niobrara, Original Hole						6.0	13				
5,733.3							Perforated Liner	6/16/2014	12,250.0	12,252.0	Niobrara, Original Hole						6.0	13				
6,217.8							Perforated Liner	6/16/2014	12,250.0	12,252.0	Niobrara, Original Hole						6.0	13				
6,334.0							Stimulations & Treatments															
6,487.9							Stg #	Stage Type	Start Date	Top (ftKB)	Btm (ftKB)	Stim/Treat Fluid										
6,617.1							40	Interval	8/4/2014	6,218.0	6,313.0	Clearstar 30 XL Gel; 30# Linear Gel; 15% HCl, <fluidtyp>										
6,787.1	Stg #	Stage Type	Start Date	Top (ftKB)	Btm (ftKB)	Stim/Treat Fluid																
6,866.1	39	Interval	8/4/2014	6,361.0	6,465.0	Clearstar 30 XL Gel; 30# Linear Gel; 15% HCl, <fluidtyp>																
7,021.0	Stg #	Stage Type	Start Date	Top (ftKB)	Btm (ftKB)	Stim/Treat Fluid																
7,125.0	38	Interval	8/4/2014	6,510.0	6,617.0	Clearstar 30 XL Gel; 30# Linear Gel; 15% HCl, <fluidtyp>																
7,284.1	Stg #	Stage Type	Start Date	Top (ftKB)	Btm (ftKB)	Stim/Treat Fluid																
7,397.0	37	Interval	8/4/2014	6,666.0	6,769.0	Clearstar 30 XL Gel; 30# Linear Gel; 15% HCl, <fluidtyp>																
7,554.1	Stg #	Stage Type	Start Date	Top (ftKB)	Btm (ftKB)	Stim/Treat Fluid																
7,683.1	36	Interval	8/4/2014	6,818.0	6,912.0	Clearstar 30 XL Gel; 30# Linear Gel; 15% HCl, <fluidtyp>																
7,833.0	Stg #	Stage Type	Start Date	Top (ftKB)	Btm (ftKB)	Stim/Treat Fluid																
7,932.1	35	Interval	8/4/2014	6,972.0	7,068.0	Clearstar 30 XL Gel; 30# Linear Gel; 15% HCl, <fluidtyp>																
8,086.9	Stg #	Stage Type	Start Date	Top (ftKB)	Btm (ftKB)	Stim/Treat Fluid																
8,190.9	34	Interval	8/3/2014	7,123.0	7,222.0	Clearstar 30 XL Gel; 30# Linear Gel; 15% HCl, <fluidtyp>																
8,346.1	Stg #	Stage Type	Start Date	Top (ftKB)	Btm (ftKB)	Stim/Treat Fluid																
8,483.9	33	Interval	8/3/2014	7,284.0	7,379.0	Clearstar 30 XL Gel; 30# Linear Gel; 15% HCl, <fluidtyp>																
8,620.1	Stg #	Stage Type	Start Date	Top (ftKB)	Btm (ftKB)	Stim/Treat Fluid																
8,752.0	32	Interval	8/3/2014	7,427.0	7,531.0	Clearstar 30 XL Gel; 30# Linear Gel; 15% HCl, <fluidtyp>																
8,899.9	Stg #	Stage Type	Start Date	Top (ftKB)	Btm (ftKB)	Stim/Treat Fluid																
8,998.0	31	Interval	8/3/2014	7,594.0	7,683.0	Clearstar 30 XL Gel; 30# Linear Gel; 15% HCl, <fluidtyp>																
9,152.9	Stg #	Stage Type	Start Date	Top (ftKB)	Btm (ftKB)	Stim/Treat Fluid																
9,256.9	30	Interval	8/3/2014	7,732.0	7,835.0	Clearstar 30 XL Gel; 30# Linear Gel; 15% HCl, <fluidtyp>																
9,412.1	Stg #	Stage Type	Start Date	Top (ftKB)	Btm (ftKB)	Stim/Treat Fluid																
9,525.9	29	Interval	8/3/2014	7,884.0	7,992.0	Clearstar 30 XL Gel; 30# Linear Gel; 15% HCl, <fluidtyp>																
9,686.0	Stg #	Stage Type	Start Date	Top (ftKB)	Btm (ftKB)	Stim/Treat Fluid																
9,809.1	28	Interval	8/3/2014	8,037.0	8,132.0	Clearstar 30 XL Gel; 30# Linear Gel; 15% HCl, <fluidtyp>																
9,965.9	Stg #	Stage Type	Start Date	Top (ftKB)	Btm (ftKB)	Stim/Treat Fluid																
10,076.1	27	Interval	8/3/2014	8,189.0	8,285.0	Clearstar 30 XL Gel; 30# Linear Gel; 15% HCl, <fluidtyp>																
10,219.2	Stg #	Stage Type	Start Date	Top (ftKB)	Btm (ftKB)	Stim/Treat Fluid																
10,323.2	26	Interval	8/2/2014	8,346.0	8,445.0	Clearstar 30 XL Gel; 30# Linear Gel; 15% HCl, <fluidtyp>																
10,473.1	Stg #	Stage Type	Start Date	Top (ftKB)	Btm (ftKB)	Stim/Treat Fluid																
10,591.9	25	Interval	8/2/2014	8,493.0	8,597.0	Clearstar 30 XL Gel; 30# Linear Gel; 15% HCl, <fluidtyp>																
10,752.0	Stg #	Stage Type	Start Date	Top (ftKB)	Btm (ftKB)	Stim/Treat Fluid																
10,872.0	24	Interval	8/2/2014	8,660.0	8,752.0	Clearstar 30 XL Gel; 30# Linear Gel; 15% HCl, <fluidtyp>																
11,025.9	Stg #	Stage Type	Start Date	Top (ftKB)	Btm (ftKB)	Stim/Treat Fluid																
11,134.8	23	Interval	8/2/2014	8,798.0	8,902.0	Clearstar 30 XL Gel; 30# Linear Gel; 15% HCl, <fluidtyp>																
11,285.1	Stg #	Stage Type	Start Date	Top (ftKB)	Btm (ftKB)	Stim/Treat Fluid																
11,396.0	22	Interval	8/2/2014	8,950.0	9,042.0	Clearstar 30 XL Gel; 30# Linear Gel; 15% HCl, <fluidtyp>																
11,563.0	Stg #	Stage Type	Start Date	Top (ftKB)	Btm (ftKB)	Stim/Treat Fluid																
11,668.0	21	Interval	8/2/2014	9,103.0	9,196.0	Clearstar 30 XL Gel; 30# Linear Gel; 15% HCl, <fluidtyp>																
11,818.9	Stg #	Stage Type	Start Date	Top (ftKB)	Btm (ftKB)	Stim/Treat Fluid																
11,946.8	20	Interval	8/2/2014	9,255.0	9,352.0	Clearstar 30 XL Gel; 30# Linear Gel; 15% HCl, <fluidtyp>																
12,105.0	Stg #	Stage Type	Start Date	Top (ftKB)	Btm (ftKB)	Stim/Treat Fluid																
12,201.1	19	Interval	8/1/2014	9,412.0	9,504.0	Clearstar 30 XL Gel; 30# Linear Gel; 15% HCl, <fluidtyp>																
12,325.1	Stg #	Stage Type	Start Date	Top (ftKB)	Btm (ftKB)	Stim/Treat Fluid																
	18	Interval	8/1/2014	9,559.0	9,656.0	Clearstar 30 XL Gel; 30# Linear Gel; 15% HCl, <fluidtyp>																
	Stg #	Stage Type	Start Date	Top (ftKB)	Btm (ftKB)	Stim/Treat Fluid																
	17	Interval	8/1/2014	9,714.0	9,809.0	Clearstar 30 XL Gel; 30# Linear Gel; 15% HCl, <fluidtyp>																
	Stg #	Stage Type	Start Date	Top (ftKB)	Btm (ftKB)	Stim/Treat Fluid																
	16	Interval	8/1/2014	9,864.0	9,968.0	Clearstar 30 XL Gel; 30# Linear Gel; 15% HCl, <fluidtyp>																



Whiting Oil & Gas Corp
1700 Broadway, Suite 2300
Denver, CO 80290
(303) 837-1661

Completion Report Info -- CR
Well Name: RAZOR FEDERAL 26J-3512B

WPC ID 1C00761025	API Number 05123380450 0	N/S Dist (ft) 2,251.0	N/S Ref FSL	E/W Dist (ft) 1,915.0	E/W Ref FEL	Lot	Quarter 1 NW	Quarter 2 SE	Quarter 3	Quarter 4	Section 26	Township 10	Twnshp... N	Range 58	Rng E/W... W			
Field Name DJ Horizontal Niobrara		County Weld		State CO			Gr Elev (ft) 4,725.60		Orig KB Elv (ft) 4,742.60		KB-Grd (ft) 17.00		Orig Spud Date 3/27/2014		Completion Date 8/5/2014		First Prod Date 8/26/2014	
Operator		Responsible Drilling			Responsible Engineer			Responsible Foreman			Responsible Geology			Well Permit Number				



Stg #	Stage Type	Start Date	Top (ftKB)	Btm (ftKB)	Stim/Treat Fluid
15	Interval	8/1/2014	10,029.0	10,120.0	Clearstar 30 XL Gel; 30# Linear Gel; 15% HCl, <fluidtyp>
14	Interval	8/1/2014	10,169.0	10,272.0	Clearstar 30 XL Gel; 30# Linear Gel; 15% HCl, <fluidtyp>
13	Interval	8/1/2014	10,321.0	10,414.0	Clearstar 30 XL Gel; 30# Linear Gel; 15% HCl, <fluidtyp>
12	Interval	8/1/2014	10,473.0	10,572.0	Clearstar 30 XL Gel; 30# Linear Gel; 15% HCl, <fluidtyp>
11	Interval	7/31/2014	10,626.0	10,733.0	Clearstar 30 XL Gel; 30# Linear Gel; 15% HCl, <fluidtyp>
10	Interval	7/31/2014	10,778.0	10,872.0	Clearstar 30 XL Gel; 30# Linear Gel; 15% HCl, <fluidtyp>
9	Interval	7/31/2014	10,930.0	11,028.0	Clearstar 30 XL Gel; 30# Linear Gel; 15% HCl, <fluidtyp>
8	Interval	7/31/2014	11,086.0	11,180.0	Clearstar 30 XL Gel; 30# Linear Gel; 15% HCl, <fluidtyp>
7	Interval	7/31/2014	11,235.0	11,332.0	Clearstar 30 XL Gel; 30# Linear Gel; 15% HCl, <fluidtyp>
6	Interval	7/31/2014	11,394.0	11,491.0	Clearstar 30 XL Gel; 30# Linear Gel; 15% HCl, <fluidtyp>
5	Interval	7/31/2014	11,539.0	11,643.0	Clearstar 30 XL Gel; 30# Linear Gel; 15% HCl, <fluidtyp>
4	Interval	7/30/2014	11,688.0	11,795.0	Clearstar 30 XL Gel; 30# Linear Gel; 15% HCl, <fluidtyp>
3	Interval	7/30/2014	11,844.0	11,947.0	Clearstar 30 XL Gel; 30# Linear Gel; 15% HCl, <fluidtyp>
2	Interval	7/30/2014	11,996.0	12,107.0	Clearstar 30 XL Gel; 30# Linear Gel; 15% HCl, <fluidtyp>
1	Interval	7/29/2014	12,148.0	12,252.0	Clearstar 30 XL Gel; 30# Linear Gel; 15% HCl, <fluidtyp>

Tubing							
Tubing - Production set at 5,743.1ftKB on 8/27/2014 18:00							
Set Depth (ftKB)		Comment			Run Date		Pull Date
5,743.1					8/27/2014		
Item Des	OD (in)	Wt (lb/ft)	Grade	Jts	Len (ft)	Top (ftKB)	Btm (ftKB)
KB					16.00	-4.1	11.9
Tubing	2 7/8	6.50	L-80	1	31.41	11.9	43.3
Tubing Sub	2 7/8	6.50	L-80	1	10.00	43.3	53.3
Tubing	2 7/8	6.50	L-80	59	1,826.46	53.3	1,879.8
Gas Lift Mandrel	2 7/8			1	4.05	1,879.8	1,883.8
Tubing	2 7/8	6.50	L-80	33	1,021.35	1,883.8	2,905.2
Gas Lift Mandrel	2 7/8			1	4.05	2,905.2	2,909.2
Tubing	2 7/8	6.50	L-80	20	618.06	2,909.2	3,527.3
Gas Lift Mandrel	2 7/8			1	4.05	3,527.3	3,531.3
Tubing	2 7/8	6.50	L-80	16	498.02	3,531.3	4,029.4
Gas Lift Mandrel	2 7/8			1	4.05	4,029.4	4,033.4
Tubing	2 7/8	6.50	L-80	16	492.47	4,033.4	4,525.9
Gas Lift Mandrel	2 7/8			1	4.05	4,525.9	4,529.9
Tubing	2 7/8	6.50	L-80	10	310.96	4,529.9	4,840.9
Cup Seating Nipple	2 7/8			1	1.10	4,840.9	4,842.0
Cross Over 2-2/8" x 2-3/8"	2 7/8			1	0.50	4,842.0	4,842.5
Tubing	2 3/8	4.70	J-55	6	188.92	4,842.5	5,031.4
Gas Lift Mandrel	2 3/8			1	4.05	5,031.4	5,035.5
Tubing	2 3/8	4.70	J-55	20	629.27	5,035.5	5,664.7
Gas Lift Mandrel	2 3/8			1	4.05	5,664.7	5,668.8
Tubing	2 3/8	4.70	J-55	2	63.00	5,668.8	5,731.8
On-Off Tool	2 3/8			1	1.34	5,731.8	5,733.1
Packer AS-1 Packer	0.0			1	10.00	5,733.1	5,743.1

Rod Strings							
<des> on <dtmmrun>							
Rod Description		Comment			Run Date		Pull Date
Item Des		OD (in)	Wt (lb/ft)	Jts	Len (ft)	Top (ftKB)	Btm (ftKB)
Other String Components							
Item Des		OD (in)	Len (ft)	Top (ftKB)	Btm (ftKB)	ID (in)	



Whiting Oil & Gas Corp
1700 Broadway, Suite 2300
Denver, CO 80290
(303) 837-1661

Completion Report Info -- CR
Well Name: RAZOR FEDERAL 26J-3512B

WPC ID 1CO0761025	API Number 05123380450 0	N/S Dist (ft) 2,251.0	N/S Ref FSL	E/W Dist (ft) 1,915.0	E/W Ref FEL	Lot	Quarter 1 NW	Quarter 2 SE	Quarter 3	Quarter 4	Section 26	Township 10	Twnshp... N	Range 58	Rng E/W... W					
Field Name DJ Horizontal Niobrara		County Weld		State CO			Gr Elev (ft) 4,725.60		Orig KB Elv (ft) 4,742.60		KB-Grd (ft) 17.00		Orig Spud Date 3/27/2014		Completion Date 8/5/2014		First Prod Date 8/26/2014			
Operator		Responsible Drilling			Responsible Engineer			Responsible Foreman			Responsible Geology			Well Permit Number						
Lateral/Horizontal - Original Hole, 12/9/2014 3:47:58 PM																	Other In Hole			
MD (ftKB)		Vertical schematic (actual)					Description CFP				OD (in) 4		Run Date		Pull Date 8/26/2014		Top Depth (ftKB) 6,332.0		Btm (ftKB) 6,334.0	
53.1							Comment isolation													
1,690.9							Description CFP				OD (in) 4		Run Date		Pull Date 8/26/2014		Top Depth (ftKB) 6,488.0		Btm (ftKB) 6,490.0	
3,531.2							Comment isolation													
4,842.5							Description CFP				OD (in) 4		Run Date		Pull Date 8/26/2014		Top Depth (ftKB) 6,640.0		Btm (ftKB) 6,642.0	
5,031.5							Comment isolation													
5,733.3							Description CFP				OD (in) 4		Run Date		Pull Date 8/26/2014		Top Depth (ftKB) 6,793.0		Btm (ftKB) 6,795.0	
6,217.8							Comment isolation													
6,334.0							Description CFP				OD (in) 4		Run Date		Pull Date 8/26/2014		Top Depth (ftKB) 6,944.0		Btm (ftKB) 6,946.0	
6,487.9							Comment isolation													
6,617.1							Description CFP				OD (in) 4		Run Date		Pull Date 8/26/2014		Top Depth (ftKB) 7,088.0		Btm (ftKB) 7,090.0	
6,767.1							Comment isolation													
6,866.1							Description CFP				OD (in) 4		Run Date		Pull Date 8/26/2014		Top Depth (ftKB) 7,250.0		Btm (ftKB) 7,252.0	
7,021.0							Comment isolation													
7,125.0							Description CFP				OD (in) 4		Run Date		Pull Date 8/26/2014		Top Depth (ftKB) 7,395.0		Btm (ftKB) 7,397.0	
7,284.1							Comment isolation													
7,397.0							Description CFP				OD (in) 4		Run Date		Pull Date 8/26/2014		Top Depth (ftKB) 7,554.0		Btm (ftKB) 7,556.0	
7,554.1							Comment isolation													
7,683.1							Description CFP				OD (in) 4		Run Date		Pull Date 8/26/2014		Top Depth (ftKB) 7,707.0		Btm (ftKB) 7,709.0	
7,833.0							Comment isolation													
7,932.1							Description CFP				OD (in) 4		Run Date		Pull Date 8/26/2014		Top Depth (ftKB) 7,859.0		Btm (ftKB) 7,861.0	
8,086.9							Comment isolation													
8,190.9							Description CFP				OD (in) 4		Run Date		Pull Date 8/26/2014		Top Depth (ftKB) 8,011.0		Btm (ftKB) 8,013.0	
8,346.1							Comment isolation													
8,463.9							Description CFP				OD (in) 4		Run Date		Pull Date 8/26/2014		Top Depth (ftKB) 8,152.0		Btm (ftKB) 8,154.0	
8,620.1							Comment isolation													
8,752.0							Description CFP				OD (in) 4		Run Date		Pull Date 8/26/2014		Top Depth (ftKB) 8,295.0		Btm (ftKB) 8,297.0	
8,899.9							Comment isolation													
8,998.0							Description CFP				OD (in) 4		Run Date		Pull Date 8/26/2014		Top Depth (ftKB) 8,316.0		Btm (ftKB) 8,318.0	
9,152.9							Comment isolation													
9,256.9							Description CFP				OD (in) 4		Run Date		Pull Date 8/26/2014		Top Depth (ftKB) 8,462.0		Btm (ftKB) 8,464.0	
9,412.1							Comment isolation													
9,525.9							Description CFP				OD (in) 4		Run Date		Pull Date 8/26/2014		Top Depth (ftKB) 8,620.0		Btm (ftKB) 8,622.0	
9,686.0							Comment isolation													
9,809.1							Description CFP				OD (in) 4		Run Date		Pull Date 8/26/2014		Top Depth (ftKB) 8,773.0		Btm (ftKB) 8,775.0	
9,965.9							Comment isolation													
10,076.1							Description CFP				OD (in) 4		Run Date		Pull Date 8/26/2014		Top Depth (ftKB) 8,925.0		Btm (ftKB) 8,927.0	
10,219.2							Comment isolation													
10,323.2							Description CFP				OD (in) 4		Run Date		Pull Date 8/26/2014		Top Depth (ftKB) 9,077.0		Btm (ftKB) 9,079.0	
10,473.1							Comment isolation													
10,591.9							Description CFP				OD (in) 4		Run Date		Pull Date 8/26/2014		Top Depth (ftKB) 9,220.0		Btm (ftKB) 9,222.0	
10,752.0							Comment isolation													
10,872.0							Description CFP				OD (in) 4		Run Date		Pull Date 8/26/2014		Top Depth (ftKB) 9,382.0		Btm (ftKB) 9,384.0	
11,025.9							Comment isolation													
11,134.8							Description CFP				OD (in) 4		Run Date		Pull Date 8/26/2014		Top Depth (ftKB) 9,524.0		Btm (ftKB) 9,526.0	
11,285.1							Comment isolation													
11,396.0							Description CFP				OD (in) 4		Run Date		Pull Date 8/26/2014		Top Depth (ftKB) 9,686.0		Btm (ftKB) 9,688.0	
11,563.0							Comment isolation													
11,668.0							Description CFP				OD (in) 4		Run Date		Pull Date 8/26/2014		Top Depth (ftKB) 9,830.0		Btm (ftKB) 9,832.0	
11,818.9							Comment isolation													
11,946.8							Description CFP				OD (in) 4		Run Date		Pull Date 8/26/2014		Top Depth (ftKB) 10,076.0		Btm (ftKB) 10,078.0	
12,105.0							Comment isolation													
12,201.1							Description CFP				OD (in) 4		Run Date		Pull Date 8/26/2014		Top Depth (ftKB) 10,219.0		Btm (ftKB) 10,221.0	
12,325.1							Comment isolation													



Whiting Oil & Gas Corp
1700 Broadway, Suite 2300
Denver, CO 80290
(303) 837-1661

Completion Report Info -- CR
Well Name: RAZOR FEDERAL 26J-3512B

WPC ID 1CO0761025		API Number 05123380450 0		N/S Dist (ft) 2,251.0		N/S Ref FSL		E/W Dist (ft) 1,915.0		E/W Ref FEL		Lot	Quarter 1 NW	Quarter 2 SE	Quarter 3	Quarter 4	Section 26	Township 10	Twnshp... N	Range 58	Rng E/W... W				
Field Name DJ Horizontal Niobrara				County Weld				State CO				Gr Elev (ft) 4,725.60		Orig KB Elev (ft) 4,742.60		KB-Grd (ft) 17.00		Orig Spud Date 3/27/2014		Completion Date 8/5/2014		First Prod Date 8/26/2014			
Operator				Responsible Drilling				Responsible Engineer				Responsible Foreman				Responsible Geology				Well Permit Number					
Lateral/Horizontal - Original Hole, 12/9/2014 3:48:00 PM																									
MD (ftKB)		Vertical schematic (actual)										Other In Hole													
												Description CFP		OD (in) 4		Run Date		Pull Date 8/26/2014		Top Depth (ftKB) 9,991.0		Btm (ftKB) 9,993.0			
53.1												Comment isolation													
1,690.9												Description CFP		OD (in) 4		Run Date		Pull Date 8/26/2014		Top Depth (ftKB) 10,143.0		Btm (ftKB) 10,145.0			
3,531.2												Comment isolation													
4,842.5												Description CFP		OD (in) 4		Run Date		Pull Date 8/26/2014		Top Depth (ftKB) 10,296.0		Btm (ftKB) 10,298.0			
5,031.5												Comment isolation													
5,733.3												Description CFP		OD (in) 4		Run Date		Pull Date 8/26/2014		Top Depth (ftKB) 10,448.0		Btm (ftKB) 10,450.0			
6,217.8												Comment isolation													
6,334.0												Description CFP		OD (in) 4		Run Date		Pull Date 8/26/2014		Top Depth (ftKB) 10,590.0		Btm (ftKB) 10,592.0			
6,487.9												Comment isolation													
6,617.1												Description CFP		OD (in) 4		Run Date		Pull Date 8/26/2014		Top Depth (ftKB) 10,752.0		Btm (ftKB) 10,754.0			
6,767.1												Comment isolation													
6,866.1												Description CFP		OD (in) 4		Run Date		Pull Date 8/26/2014		Top Depth (ftKB) 10,894.0		Btm (ftKB) 10,896.0			
7,021.0												Comment isolation													
7,125.0												Description CFP		OD (in) 4		Run Date		Pull Date 8/26/2014		Top Depth (ftKB) 11,057.0		Btm (ftKB) 11,059.0			
7,284.1												Comment isolation													
7,397.0												Description CFP		OD (in) 4		Run Date		Pull Date 8/26/2014		Top Depth (ftKB) 11,200.0		Btm (ftKB) 11,202.0			
7,554.1												Comment isolation													
7,683.1												Description CFP		OD (in) 4		Run Date		Pull Date 8/26/2014		Top Depth (ftKB) 11,362.0		Btm (ftKB) 11,364.0			
7,833.0												Comment isolation													
7,932.1												Description CFP		OD (in) 4		Run Date		Pull Date 8/26/2014		Top Depth (ftKB) 11,563.0		Btm (ftKB) 11,565.0			
8,086.9												Comment isolation													
8,190.9												Description CFP		OD (in) 4		Run Date		Pull Date 8/26/2014		Top Depth (ftKB) 11,666.0		Btm (ftKB) 11,668.0			
8,346.1												Comment isolation													
8,483.9												Description CFP		OD (in) 4		Run Date		Pull Date 8/26/2014		Top Depth (ftKB) 11,819.0		Btm (ftKB) 11,821.0			
8,620.1												Comment isolation													
8,752.0												Description CFP		OD (in) 4		Run Date		Pull Date 8/26/2014		Top Depth (ftKB) 11,974.0		Btm (ftKB) 11,976.0			
8,899.9												Comment isolation													
8,998.0												Description CFP		OD (in) 4		Run Date		Pull Date 8/26/2014		Top Depth (ftKB) 12,123.0		Btm (ftKB) 12,125.0			
9,152.9												Comment isolation													
9,256.9												Description CFP		OD (in) 4		Run Date		Pull Date 8/26/2014		Top Depth (ftKB) 12,277.0		Btm (ftKB) 12,279.0			
9,412.1												Comment isolation													
9,525.9												Description CFP		OD (in) 4		Run Date		Pull Date 8/26/2014		Top Depth (ftKB) 12,431.0		Btm (ftKB) 12,433.0			
9,686.0												Comment isolation													
9,809.1												Bottom Hole Cores													
9,965.9												Core #		Date		Top (ftKB)		Btm (ftKB)		Wellbore		Recovered (ft)		% Rec...	
10,076.1												Comment													
10,219.2																									
10,323.2																									
10,473.1																									
10,591.9																									
10,752.0																									
10,872.0																									
11,025.9																									
11,134.8																									
11,285.1																									
11,396.0																									
11,563.0																									
11,668.0																									
11,818.9																									
11,946.8																									
12,105.0																									
12,201.1																									
12,325.1																									