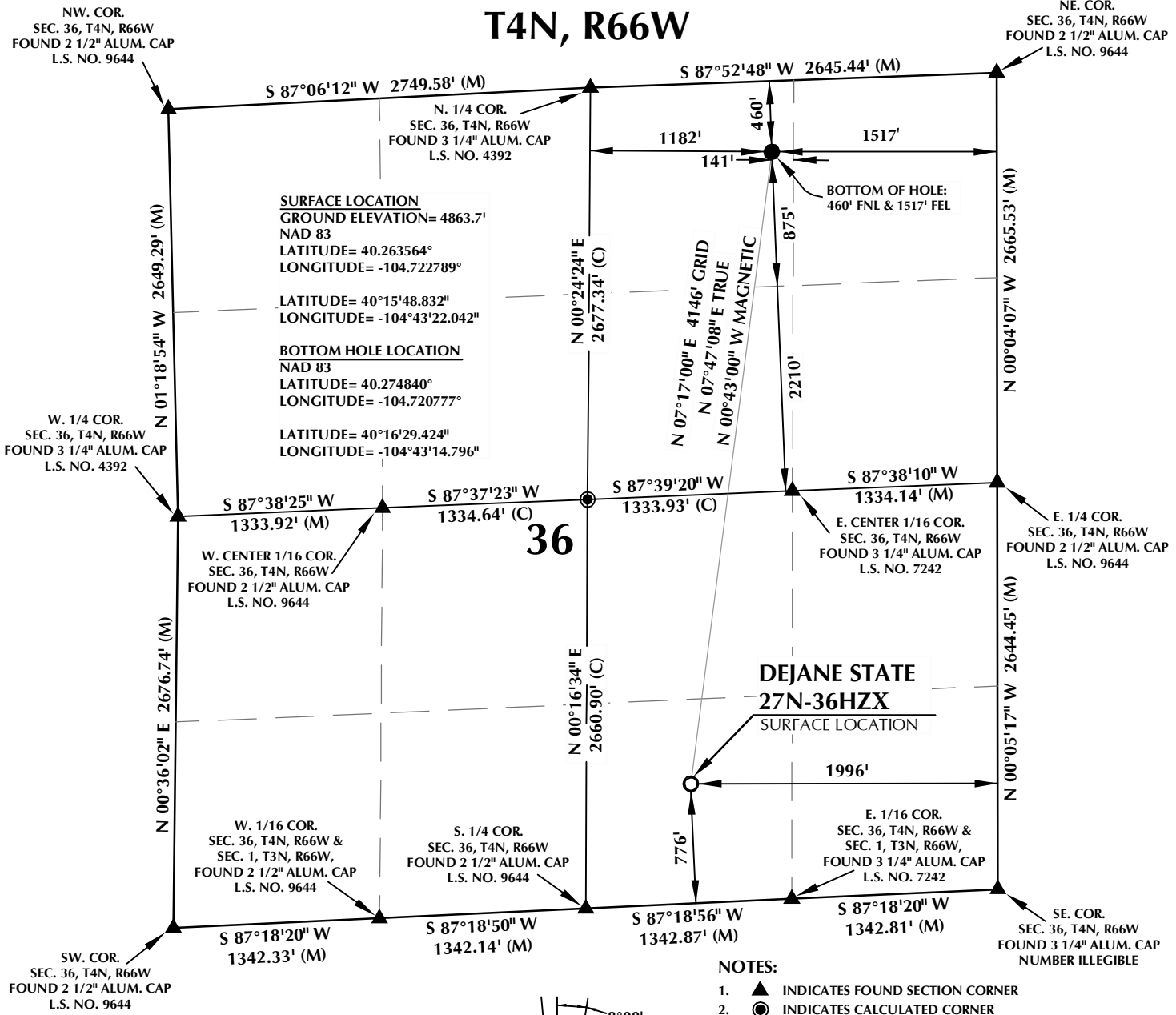
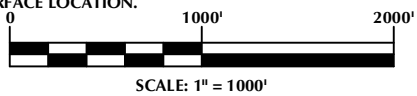
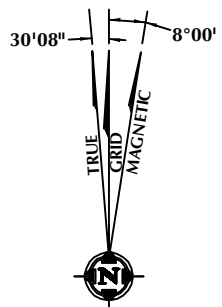


T4N, R66W



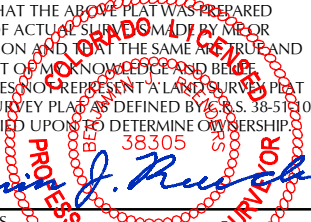
- NOTES:**
- ▲ INDICATES FOUND SECTION CORNER
 - INDICATES CALCULATED CORNER
 - ELEVATION BASED ON NAVD88 (GEOID09)
 - BASIS OF BEARING DERIVED FROM COLORADO COORDINATE SYSTEM 1983 NORTH ZONE UNLESS OTHERWISE NOTED.
 - ALL MEASURED DISTANCES ARE GRID. COMBINED SCALE FACTOR: .99972797
 - OPERATOR: ROB WILSON / PDOP = 1.6
 - SURFACE USE OF LOCATION IS DRYLAND CROP.
 - SEE ADDENDUM TO WELL LOCATION CERTIFICATE FOR EXISTING IMPROVEMENTS WITHIN 500' OF THE WELL PAD.
 - WELL FOOTAGES ARE MEASURED AT RIGHT ANGLES TO THE SECTION LINES.
 - THE BOTTOM OF HOLE BEARS N07°17'00"E 4146' FROM THE SURFACE LOCATION.



CERTIFICATE OF SURVEYOR:

THIS IS TO CERTIFY THAT THE ABOVE PLAT WAS PREPARED FROM FIELD NOTES OF ACTUAL SURVEY MADE BY ME OR UNDER MY SUPERVISION AND THAT THE SAME ARE TRUE AND CORRECT TO THE BEST OF MY KNOWLEDGE AND BELIEF. THIS CERTIFICATE DOES NOT REPRESENT A LAND SURVEY PLAT OR IMPROVEMENT SURVEY PLAT AS DEFINED BY C.S. 38-51-102 AND CANNOT BE RELIED UPON TO DETERMINE OWNERSHIP.

Benjamin J. Reenders
 BENJAMIN J. REENDERS
 PROFESSIONAL LAND SURVEYOR
 COLORADO REGISTRATION NUMBER 433305



NOTE: MAGNETIC NORTH IS CURRENT AS OF 11/8/2013. MAGNETIC NORTH CHANGES WEST 0°08' PER YEAR.

WELL PAD - DEJANE STATE 2N-36HZX

DEJANE STATE 27N-36HZX
 WELL LOCATION CERTIFICATE
 776' FSL & 1996' FEL SWSE (SURFACE)
 460' FNL & 1517' FEL NWNE
 (BOTTOM) LOCATED IN SECTION 36
 T4N, R66W, 6TH P.M.
 WELD COUNTY, COLORADO

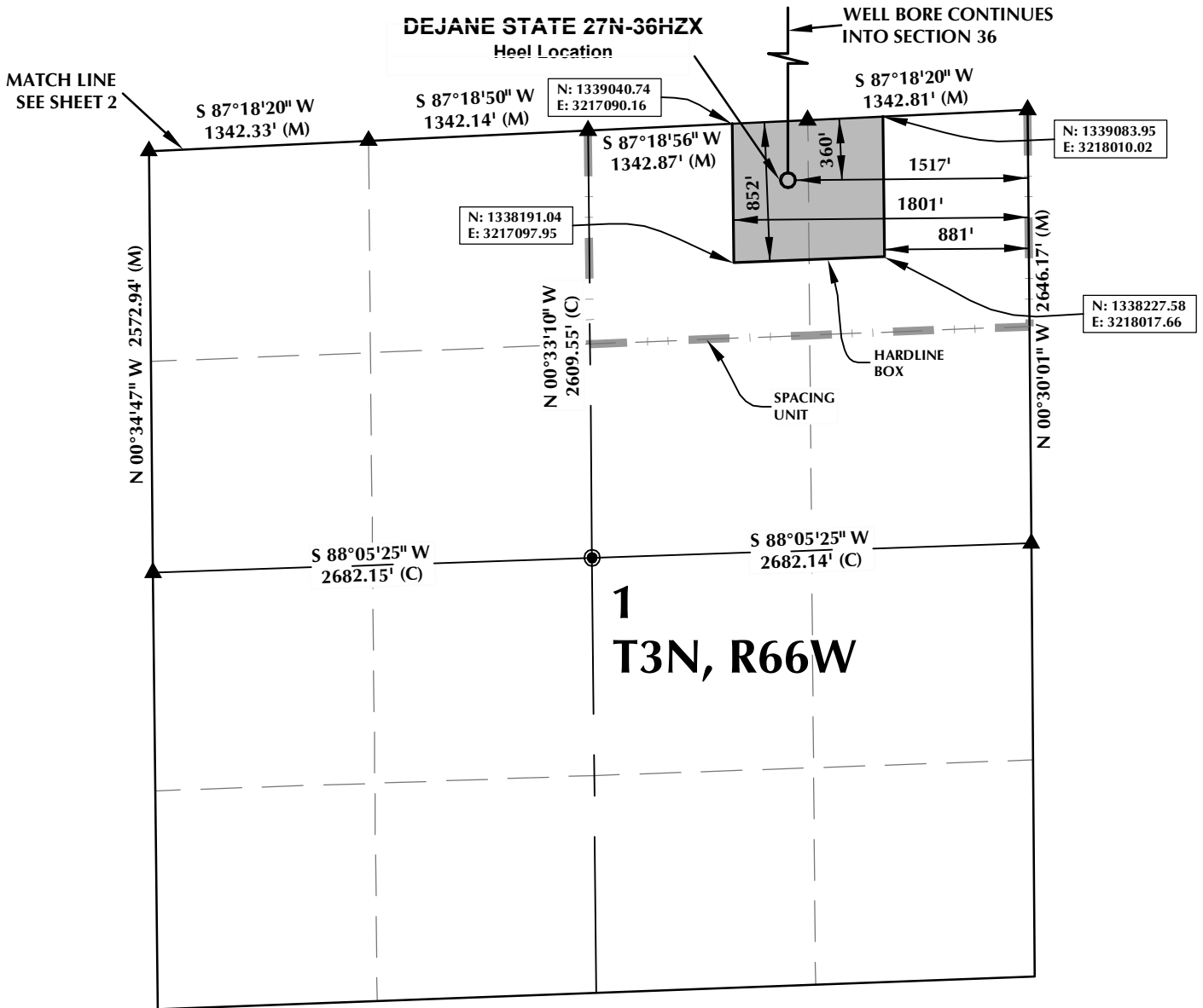
Kerr-McGee Oil & Gas Onshore L.P.
 1099 18th Street
 Denver, Colorado 80202



CONSULTING, LLC
 SHERIDAN OFFICE 2155 North Main Street Sheridan, Wyoming 82801 Phone 307-674-0609
 LOVELAND OFFICE 1635 Foxtrail Drive, Suite 204 Loveland, Colorado 80538 Phone 970-776-4331

DRAFTED BY:	LMO	CHECKED BY:	BJR
DATE DRAFTED:	11/8/13	DATE SURVEYED:	10/23/13
REVISED:	1/16/14	FILE NAME:	13-100

DEJANE STATE 27N-36HZX



HEEL LOCATION
 NAD 83
 N: 1,338,696.28'
 E: 3,217,429.99'

LATITUDE= 40.260498°
 LONGITUDE= -104.720904°

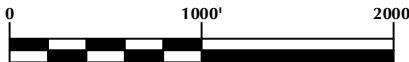
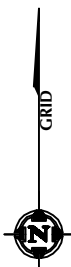
LATITUDE= 40°15'37.794\"/>

AVAILABLE FOOTAGE
 5717'

BOTTOM HOLE LOCATION
 NAD 83
 N: 1,343,920.88'
 E: 3,217,419.65'

LATITUDE= 40.274840°
 LONGITUDE= -104.720777°

LATITUDE= 40°16'29.424\"/>



SCALE: 1" = 1000'

NOTES:

- ▲ INDICATES FOUND SECTION CORNER
- INDICATES CALCULATED CORNER
- BASIS OF BEARING DERIVED FROM COLORADO COORDINATE SYSTEM 1983 NORTH ZONE UNLESS OTHERWISE NOTED.
- DRAWING NORTHING / EASTING COORDINATES ARE BASED ON COLORADO COORDINATE SYSTEM 1983 NORTH ZONE UNLESS OTHERWISE NOTED.
- COMBINED SCALE FACTOR: .99972797
- THIS EXHIBIT DOES NOT REPRESENT A LAND SURVEY PLAT OR IMPROVEMENT SURVEY PLAT AS DEFINED BY C.R.S. 38-51-102 AND CANNOT BE RELIED UPON TO DETERMINE OWNERSHIP.

WELL PAD - DEJANE STATE 2N-36HZX

DEJANE STATE 27N-36HZX
 SPACING UNIT EXHIBIT
 360' FNL & 1517' FEL NWNE (HEEL)
 LOCATED IN SECTION 1, T3N, R66W, 6TH P.M.
 460' FNL & 1517' FEL NWNE (BOTTOM)
 LOCATED IN SECTION 36, T4N, R66W, 6TH
 P.M. WELD COUNTY, COLORADO

**Kerr-McGee Oil &
 Gas Onshore L.P.**
 1099 18th Street
 Denver, Colorado 80202



CONSULTING, LLC

SHERIDAN OFFICE
 2155 North Main Street
 Sheridan, Wyoming 82801
 Phone 307-674-0609

LOVELAND OFFICE
 1635 Foxtrail Drive, Suite 204
 Loveland, Colorado 80538
 Phone 970-776-4331

DRAFTED BY:	LMO	CHECKED BY:	BJR	SHEET NO:
DATE DRAFTED:	11/8/13	DATE SURVEYED:	10/23/13	1
REVISED:	2/13/14	FILE NAME:	13-100	1 OF 2