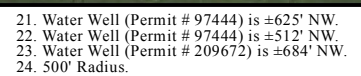


LOT 2 SW1/4 SECTION 7, TOWNSHIP 6 NORTH, RANGE 67 WEST OF THE 6TH PRINCIPAL MERIDIAN



<div><div><div><div><div><div></div><div>Proposed Well</div></div><div><div><div></div><div>Water Well</div></div></div><div><div><div></div><div>Private Road</div></div><div><div><div></div><div>Public Road</div></div><div><div><div></div><div>Powerline</div></div><div><div><div></div><div>Underground Electric Line</div></div><div><div><div></div><div>Ditch</div></div><div><div><div></div><div>Proposed Access Road</div></div></div><div><div><div></div><div>Disturbance Area</div></div><div><div><div></div><div>500' Radius</div></div><div><div><div></div><div>Building Unit</div></div><div><div><div></div><div>Building</div></div></div></div></div></div></div></div></div></div></div></div></div></div></div>		<div><div><div><div><div>Measured from Nearest Well</div><div>Building - ±510' N</div><div>Building Unit - ±535' NW</div><div>Surface Water (Ditch) - ±988 NW</div><div>Measured from Reference Location</div><div>Public Road - (CR 13) ±253' W</div><div>Prop. Line (Weld County) ±245' W</div><div>Utility (Power Line) - ±276' W</div><div>Railroad - ±2206' NE</div><div>Water Well - ±512' NW</div><div>Permit: 97444,</div><div>SWL = 13'</div><div>Receipt: 9041875</div></div></div><div><div><div><div>Reference Location</div><div>** WESTWIND 7 **</div><div>Lat: 40.496447° Long:-104.943236° (NAD83)</div><div>Elevation: 4819 Feet</div><div>Disturbance Acreage:</div><div>5.82 Acres Drilling Operations</div><div>0.92 Acres Interim Reclaim</div><div>Current Surface Use: Irrigated Crop</div><div>Future Surface Use: Irrigated Crop</div></div></div><div><div><div>Prepared for:</div><div><div><div><div>EXTRACTION</div><div>Drilling & Geoservices</div></div></div></div></div></div></div></div></div>
<div><div><div><div><div><div><div><div><div><div></div><div>PFS</div><div></div></div><div><div><div>Use our resources to find yours!</div><div>www.petro-fs.com</div><div>(303) 928-7128</div></div></div></div><div><div><div>Field Date: 7/9/2014</div><div>Drafting Date: 11/3/2014</div><div>Drafted By: CSG</div><div>Checked By: DRF</div><div>Revision: J</div></div><div><div><div>Data Sources:</div><div>- Aerial courtesy of NAIP (2013)</div></div></div></div></div></div></div></div></div></div></div>		