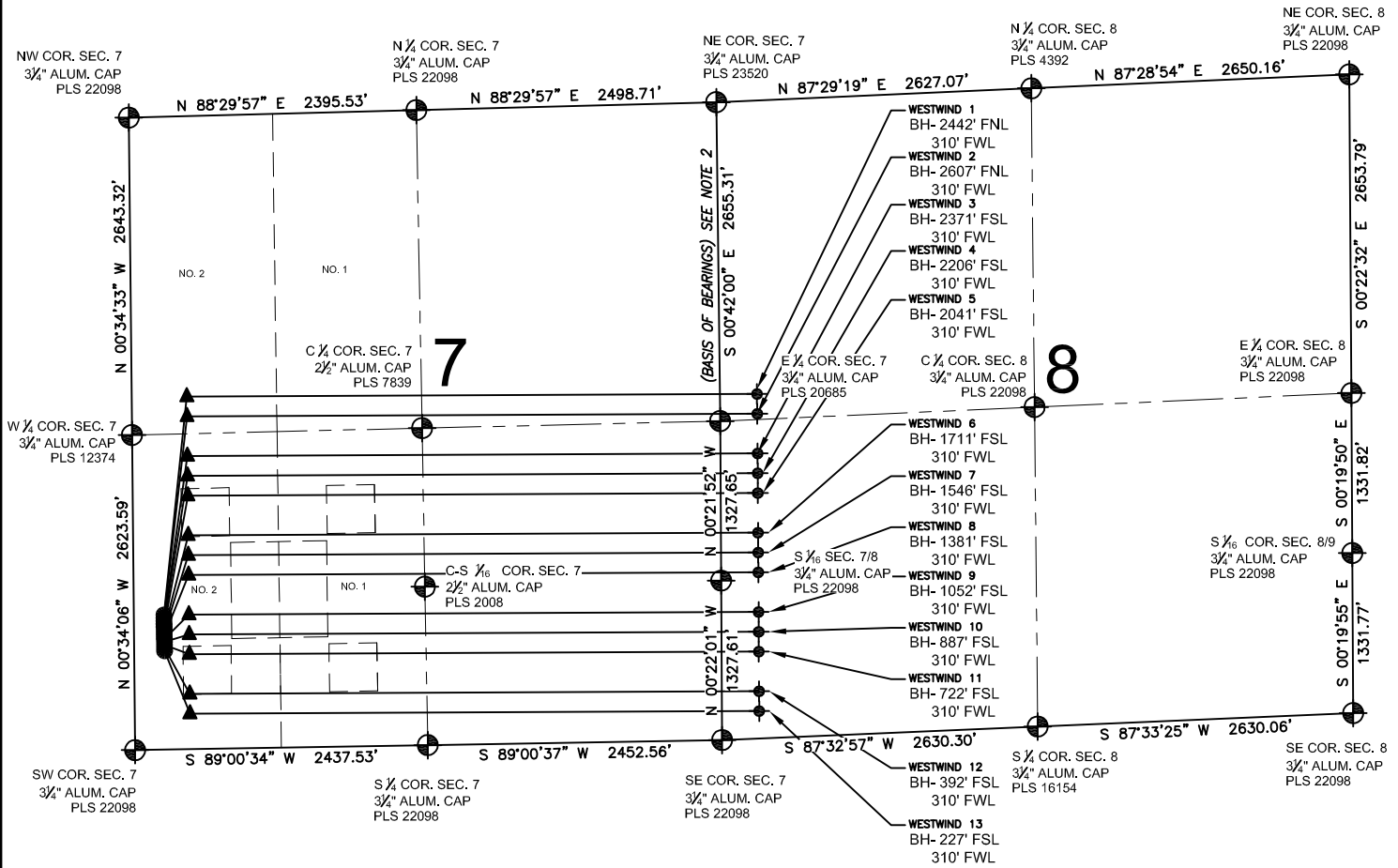


WESTWIND 7-P PAD MULTI-WELL PLAN

SECTION 7, TOWNSHIP 6 NORTH, RANGE 67 WEST, 6TH P.M.



PREPARED BY:



EXTRACTION OIL & GAS

FIELD DATE:
07-09-14

DRAWING DATE:
07-15-14

BY: MDC
CHECKED: TJR

PAD NAME:

WESTWIND 7-P PAD

SURFACE LOCATION:

LOT 2 SW 1/4, SEC. 7, T6N, R67W, 6TH P.M.

WELD COUNTY, COLORADO

