

Company: Omimex Petroleum Inc

Well: Mailander 4-34-6-45

Field: Ballyneal

County: Phillips State: Colorado

Platform Express			
Caliper			
Cement Volume			
Location:		Elev.:	
SWNE Sec34 T6N R45W		K.B. 3810.00 ft	
SHL: 481' FNL, 394' FWL		G.L. 3804.00 ft	
		D.F. 3809.00 ft	
Permanent Datum:	Ground Level	Elev.:	3804.00 f
Log Measured From:	Kelly Bushing	6.00 ft	above Perm.Datum
Drilling Measured From:	Kelly Bushing		
API Serial No.	Section:	Township:	Range:
05-095-06465	34	6N	45W
Logging Date	12-Nov-2014		

Logging Date	12-Nov-2014				
Run Number	ONE				
Depth Driller	2696.00 ft				
Schlumberger Depth	2695.00 ft				
Bottom Log Interval	2695.00 ft				
Top Log Interval	498.00 ft				
Casing Driller Size @ Depth	7 in @ 497.00 ft				
Casing Schlumberger	498 ft				
Bit Size	6.25 in				
Type Fluid In Hole	Water				
MUD	Density	9 lbm/gal	30 s		
	Fluid Loss	PH	8.5		
	Source of Sample				
RM @ Meas Temp	0.18 ohm.m @ 74 degF				
RMF @ Meas Temp	0.14 ohm.m @ 74 degF				
RMC @ Meas Temp	0.27 ohm.m @ 74 degF				
Source RMF	RMC	Calculated	Calculated		
RM @ BHT	RMF @ BHT	0.15 @ 89	0.12 @ 89		
Max Recorded Temperatures			89 degF		
Circulation Stopped		Time	12-Nov-2014 17:15:00		
Logger on Bottom		Time	12-Nov-2014 20:54:10		
Unit Number	Location:	2135	Fort Morgan		
Recorded By	B Makinson				
Witnessed By	Paul Dekaye				

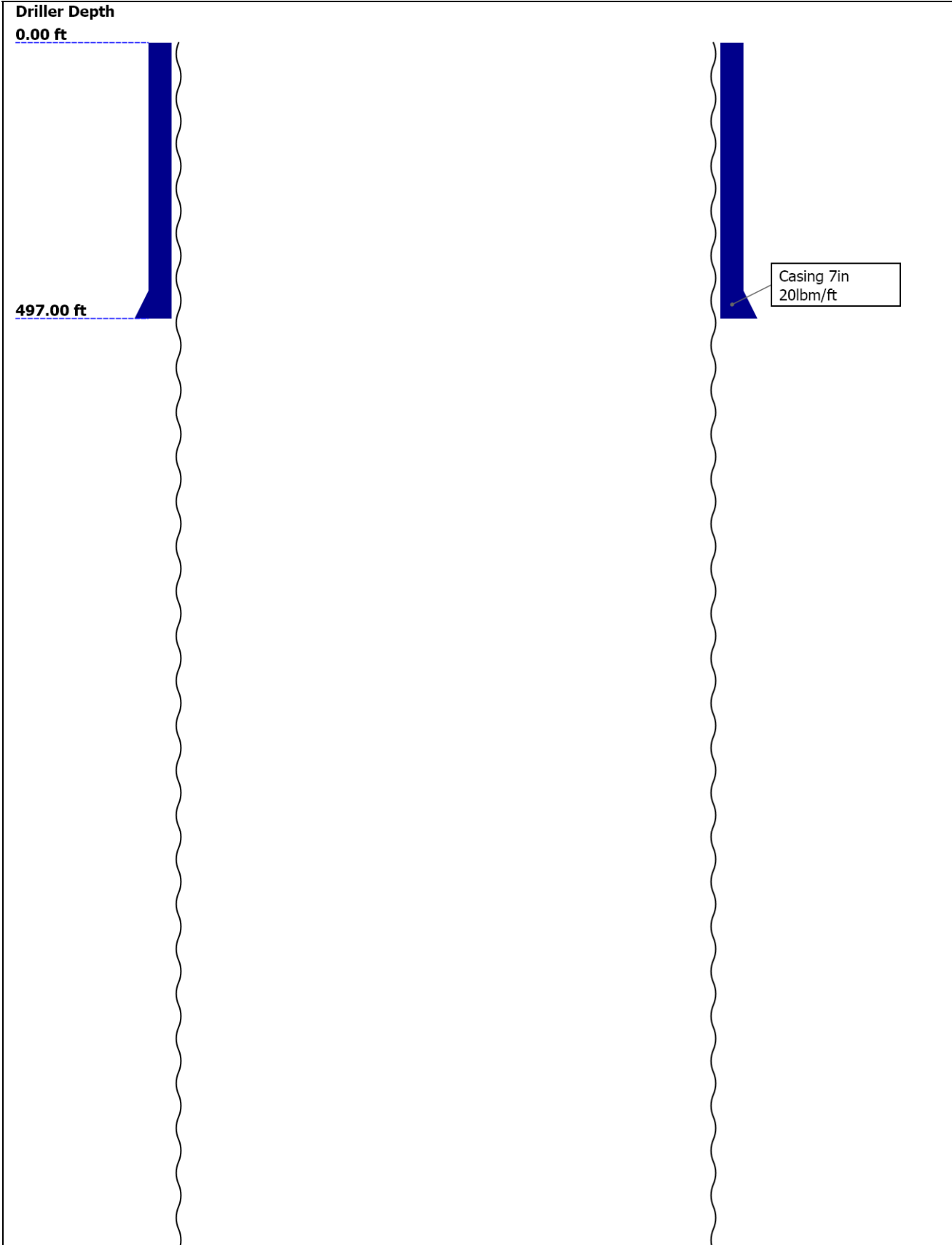
Disclaimer

THE USE OF AND RELIANCE UPON THIS RECORDED-DATA BY THE HEREIN NAMED COMPANY (AND ANY OF ITS AFFILIATES, PARTNERS, REPRESENTATIVES, AGENTS, CONSULTANTS AND EMPLOYEES) IS SUBJECT TO THE TERMS AND CONDITIONS AGREED UPON BETWEEN SCHLUMBERGER AND THE COMPANY, INCLUDING: (a) RESTRICTIONS ON USE OF THE RECORDED-DATA; (b) DISCLAIMERS AND WAIVERS OF WARRANTIES AND REPRESENTATIONS REGARDING COMPANY'S USE AND RELIANCE UPON THE RECORDED-DATA; AND (c) CUSTOMER'S FULL AND SOLE RESPONSIBILITY FOR ANY INFERENCE DRAWN OR DECISION MADE IN CONNECTION WITH THE USE OF THIS RECORDED-DATA.

Contents

- 1. Header
- 2. Disclaimer
- 3. Contents
- 4. Well Sketch
- 5. Borehole Size/Casing/Tubing Record
- 6. Remarks and Equipment Summary
- 7. Depth Summary
- 8. ONE Main Pass Caliper
 - 8.1 Integration Summary
 - 8.2 Software Version
 - 8.3 Composite Summary
 - 8.4 Log (Noble East Caliper)
 - 8.5 Parameter Listing
- 9. Tail

Well Sketch



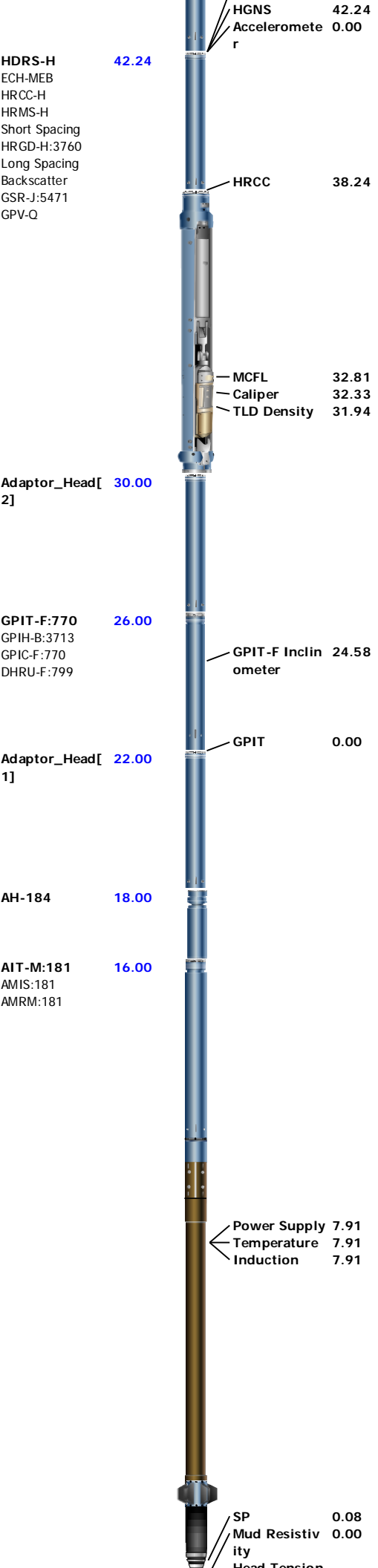


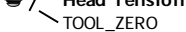
Borehole Size/Casing/Tubing Record

Bit						
Bit Size (in)	6.25					
Top Driller (ft)	0					
Top Logger (ft)	0					
Bottom Driller (ft)	2696					
Bottom Logger (ft)	2695					
Casing						
Size (in)	7					
Weight (lbm/ft)	20					
Inner Diameter (in)	6.456					
Grade	J55					
Top Driller (ft)	0					
Top Logger (ft)	0					
Bottom Driller (ft)	497					
Bottom Logger (ft)	498					

Remarks and Equipment Summary

ONE: Toolstring				ONE: Remarks
Equip name	Length	MP name	Offset	<div>First run in the well.</div> <div>Toolstring run as per tool sketch.</div> <div>No bowspring used to eccenter HGNS as per request.</div> <div>Limestone matrix, MDEN: 2.71</div> <div>Neutron corrections applied: Hole size, Standoff.</div> <div>Down log stretch correction: 0.26 ft.</div> <div>Cement volume calculated assuming 4.5" future casing.</div> <div>Caliper check in casing within 0.1" tolerance.</div> <div>Mud resistivity measured from AIT AMF.</div> <div>TD: 2695 ft, CSG: 498 ft.</div>
LEH-QT	61.07			
LEH-QT				
EDTC-B:8328	58.15			
EDTH-B				
EDTG-A				
EDTC-B:8328				
		CTEM	54.65	
		ACCZ	0.00	
		HV	0.00	
		Gamma Ray	52.78	
		TelStatus	51.65	
		Temperature	51.62	
HGNS-H:4810	51.65			
HGNH				
NSR-F:5215				
NPV-N				
HGNS-H:4810				
HMCA-H				
HACCZ-H:5955				
		GR	50.91	
		CNL Porosity	44.58	
		/HMCA	42.24	



<div></div> <div>Lengths are in ft Maximum Outer Diameter = 9.000 in Line: Sensor Location, Value: Gating Offset All measurements are relative to TOOL_ZERO</div>					
Depth Summary					
		ONE			
Depth Measuring Device					
Type	IDW-JA				
Serial Number	6433				
Calibration Date	23-Sep-2014				
Calibrator Serial Number					
Calibration Cable Type	7-46 PXS				
Wheel Correction 1	-3				
Wheel Correction 2	-2				
Tension Device					
Type	CMTD-B/A				
Serial Number	1919				
Calibration Date	07-Nov-2014				
Calibrator Serial Number	441345A				
Number of Calibration Points	10				
Calibration Root Mean Square Error	13				
Calibration Peak Error	24				
Logging Cable					
Type	7-46P-XS				
Serial Number	U711057				
Length	24000.00 ft				
Conveyance Type	Wireline				
Rig Type	Single				
ONE:Depth Control Parameters			Depth Control Remarks		
Log Sequence	First Log In the Well		All Schlumberger depth control procedures followed.		
Rig Up Length At Surface			IDW used as primary depth control.		
Rig Up Length At Bottom			Z-Chart used as secondary depth control.		
Rig Up Length Correction					
Stretch Correction	0.26 ft				
Tool Zero Check At Surface					
ONE					
Main Pass Caliper					
Integration Summary					
Output Channel(s)	Output Description	Input Parameter	Output Value	Unit	
ICV	Integrated Cement Volume	GCSE_UP_PASS, FCD	237.09	ft3	
IHV	Integrated Hole Volume	GCSE_UP_PASS	480.35	ft3	
Software Version					
Acquisition System			Version		
MaxWell			4.0.9163.3000		
Application Patch			Patch-SP-10767_13393-4.0.9163.3001		
Computation	Description			Version	
Borehole	Borehole Ensemble provides common Borehole Parameters and Channels			4.0.9213.3000	
DepthCorrection	DepthCorrection			4.0.9213.3000	
Tool Elements	Description		Software Version	Firmware Version	
HRCC-H	HILT High-Resolution Control Cartridge, 150 degC		4.0.9231.3000		
HRCC-H	HILT High-Resolution Control Cartridge, 150 degC		4.0.9231.3000		

[illegible]

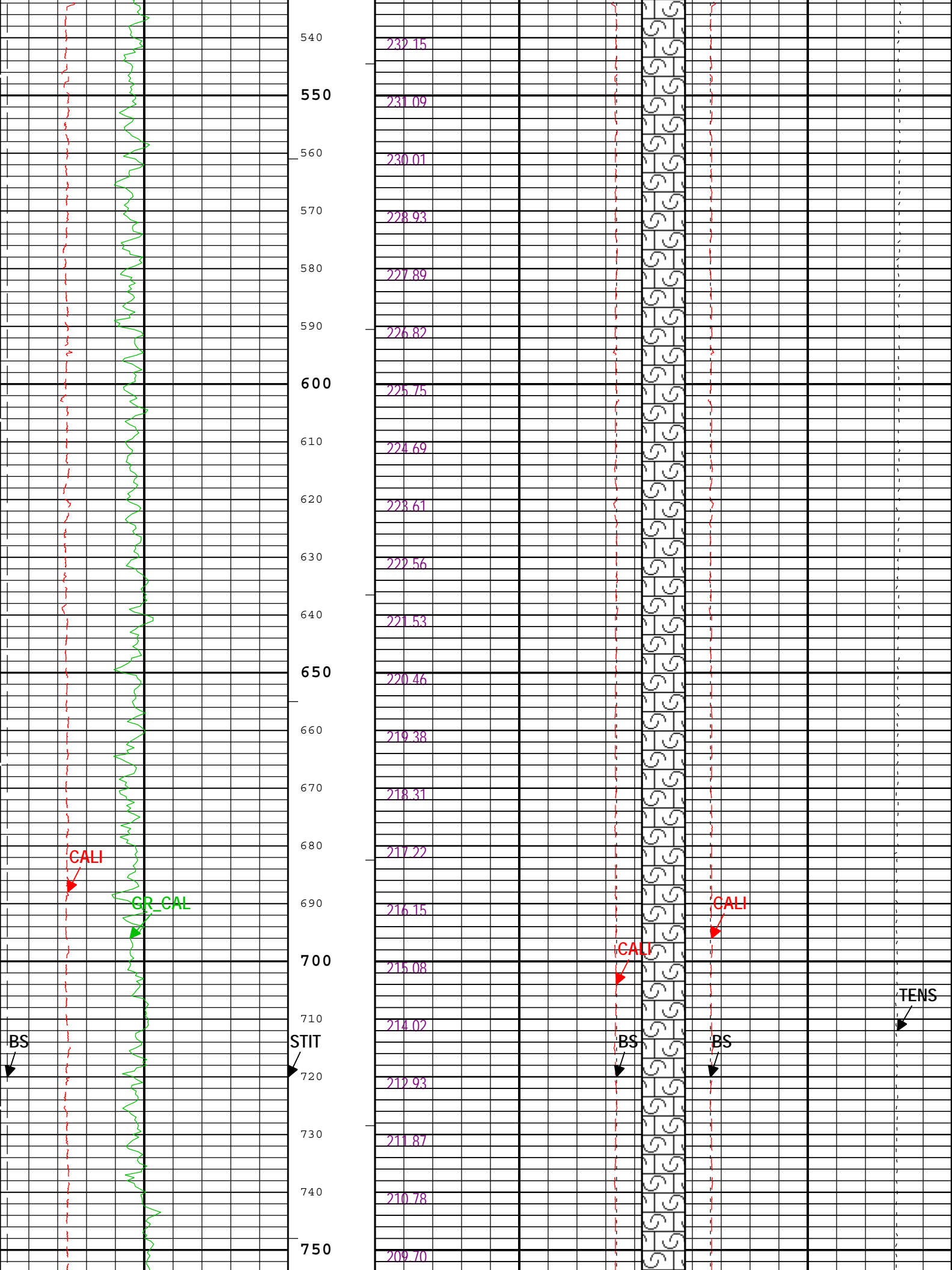
All depths are referenced to toolstring zero

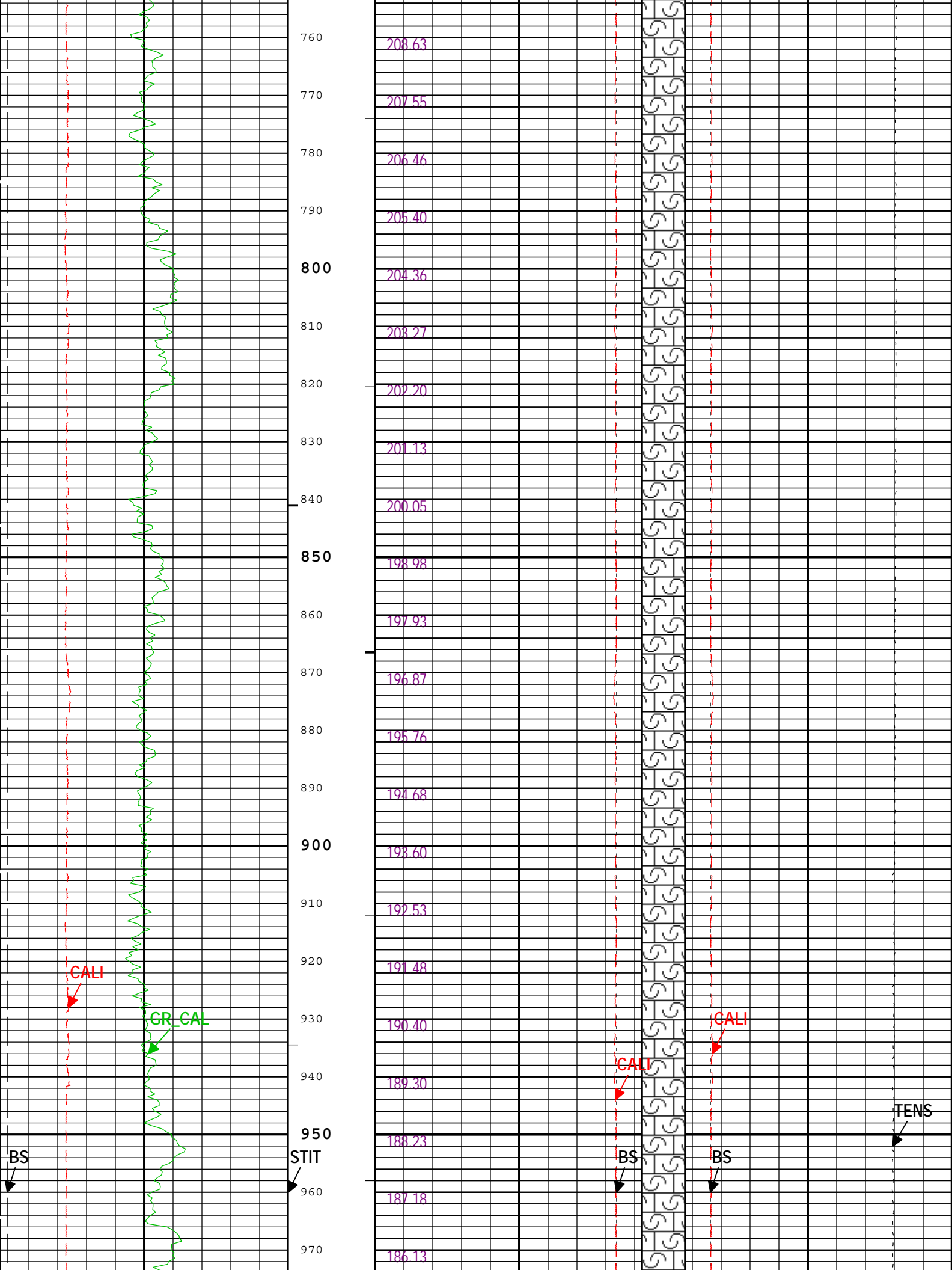
ONE: Log[3]:Up:S011

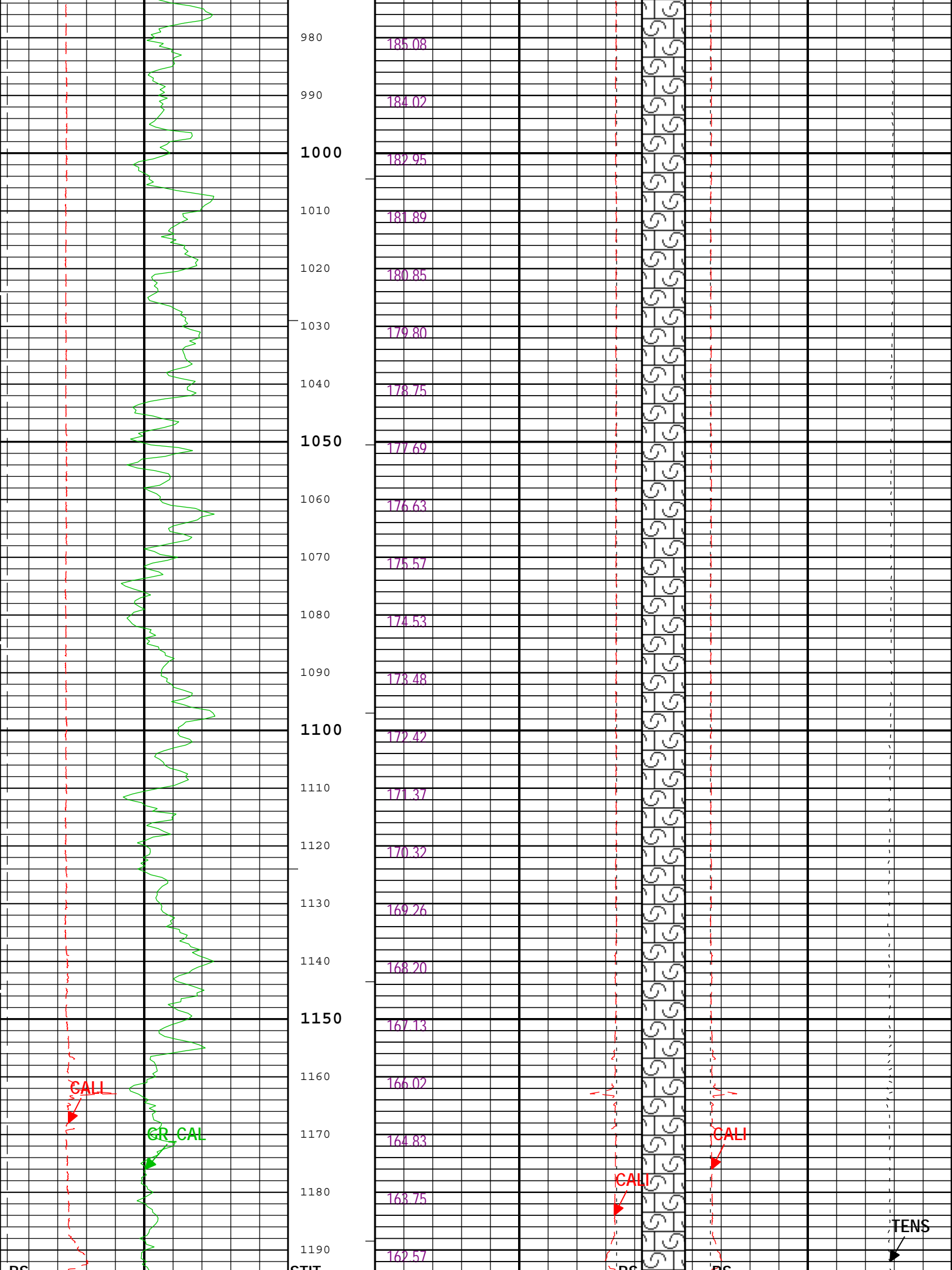
Channel	Source	Sampling
BS	Borehole	6in
CALI	HDRS-H:HRCC-H:HRCC-H	1in
GR_CAL	HGNS-H:HGNS-H:HGNS-H	6in
ICV	Borehole	6in
IHV	Borehole	6in
STIT	DepthCorrection	6in
TENS	WLWorkflow	6in
TIME_1900	WLWorkflow	0.1in

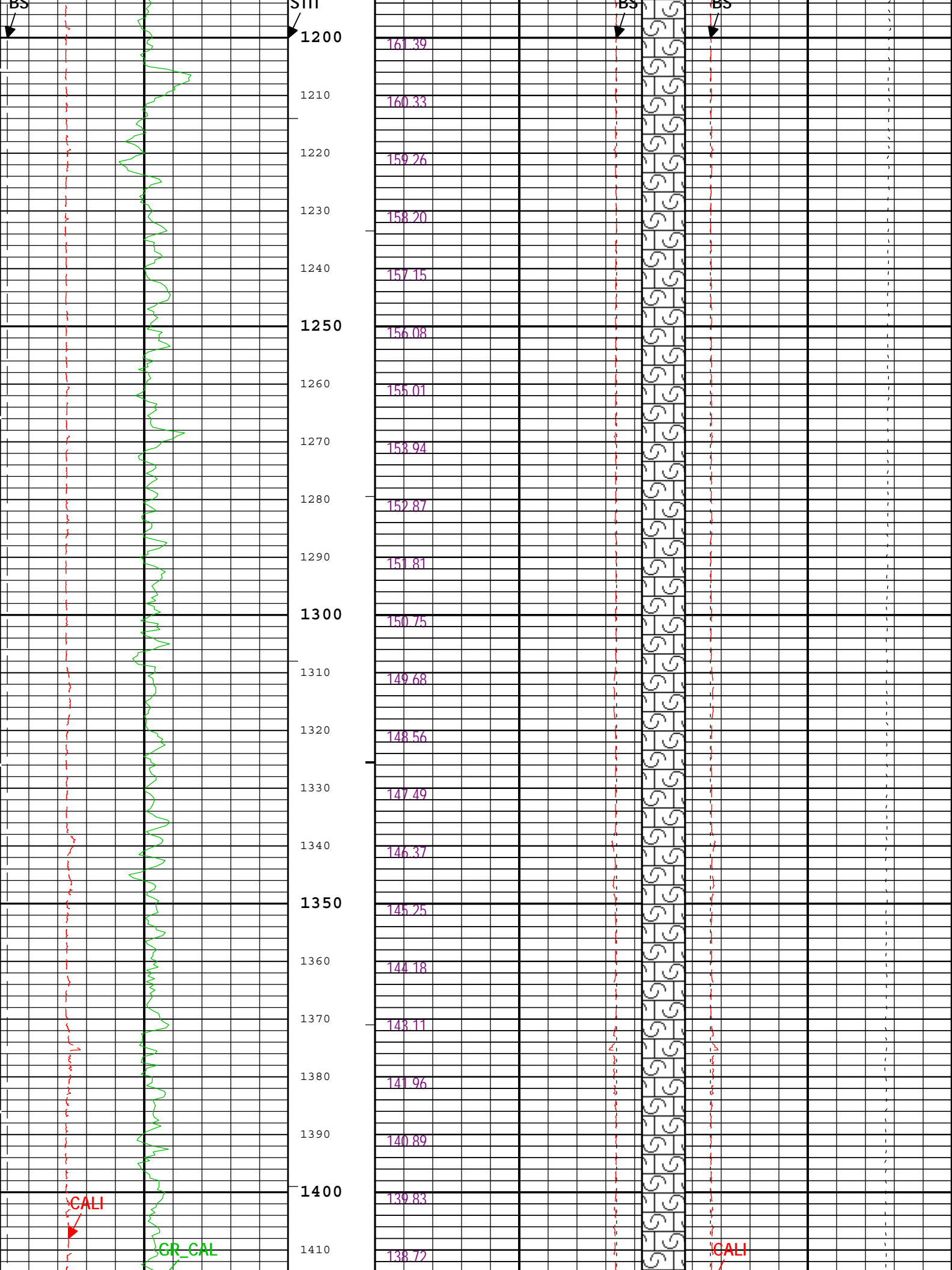
TIME_1900 - Time Marked every 60.00 (s)

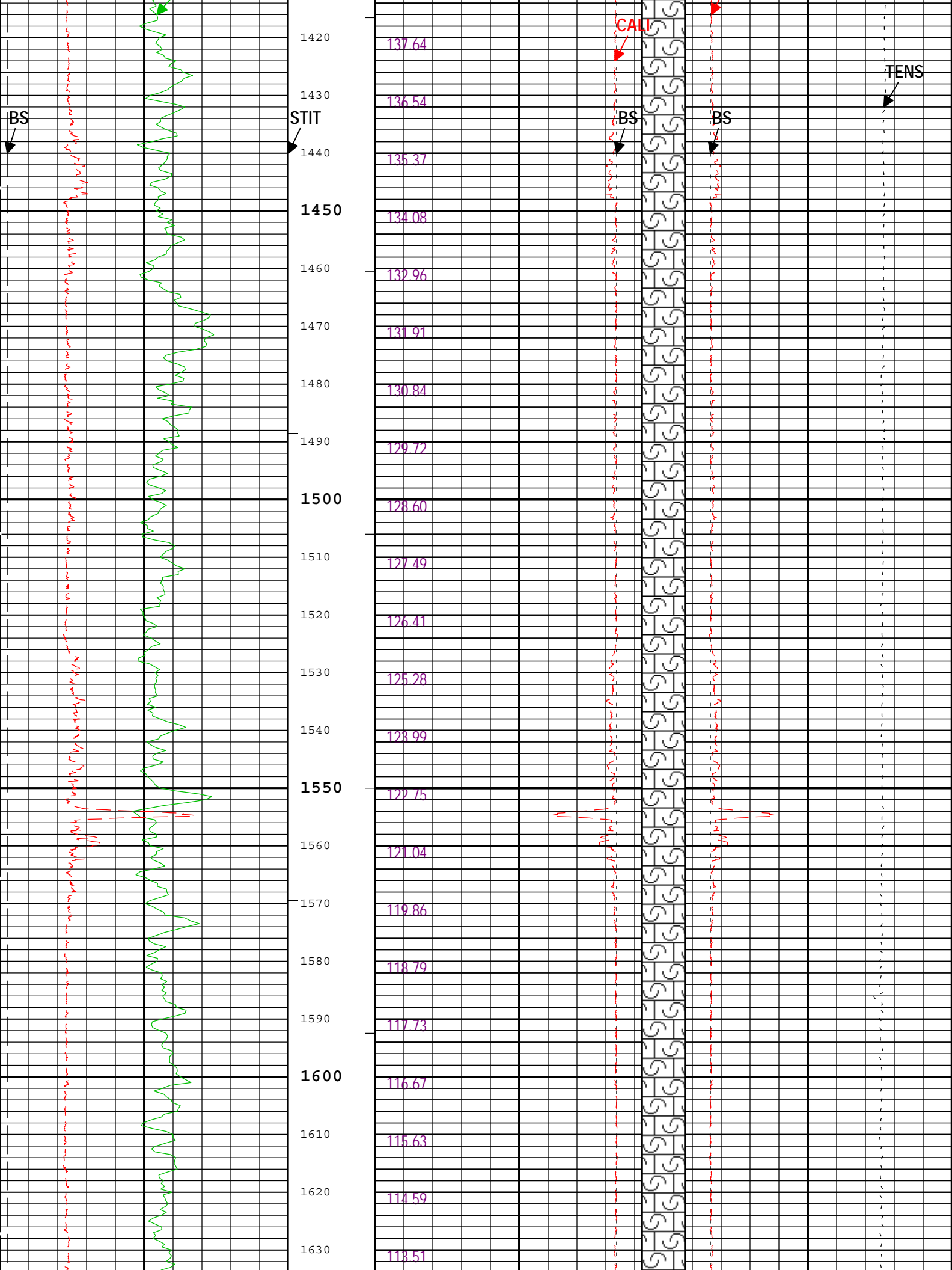
<div> <div>Bit Size (BS)</div> <div>6 in 16</div> </div>			<div> <div>Integrated Cement Volume (ICV) ft3</div> <div>3</div> </div>			<div> <div>Bit Size (BS)</div> <div>3 in 23</div> </div>		
<div> <div>Calibrated Gamma Ray (GR_CAL) HGNS-H</div> <div>0 gAPI 200</div> </div>			<div> <div>Bit Size (BS)</div> <div>23 in 3</div> </div>			<div> <div>Cable Tension (TENS)</div> <div>6000 lbf 0</div> </div>		
<div> <div>Caliper (CALI) HDRS-H</div> <div>4 in 14</div> </div>			<div> <div>Caliper (CALI) HDRS-H</div> <div>23 in 3</div> </div>			<div> <div>Caliper (CALI) HDRS-H</div> <div>3 in 23</div> </div>		
<div> <div>Stuck Tool Indicator, Total (STIT)</div> <div>0 ft 50</div> </div>			<div> <div>Future Casing (Outer) Diameter (FCD)</div> <div>-17 in 23</div> </div>			<div> <div>Future Casing (Outer) Diameter (FCD)</div> <div>23 in -17</div> </div>		

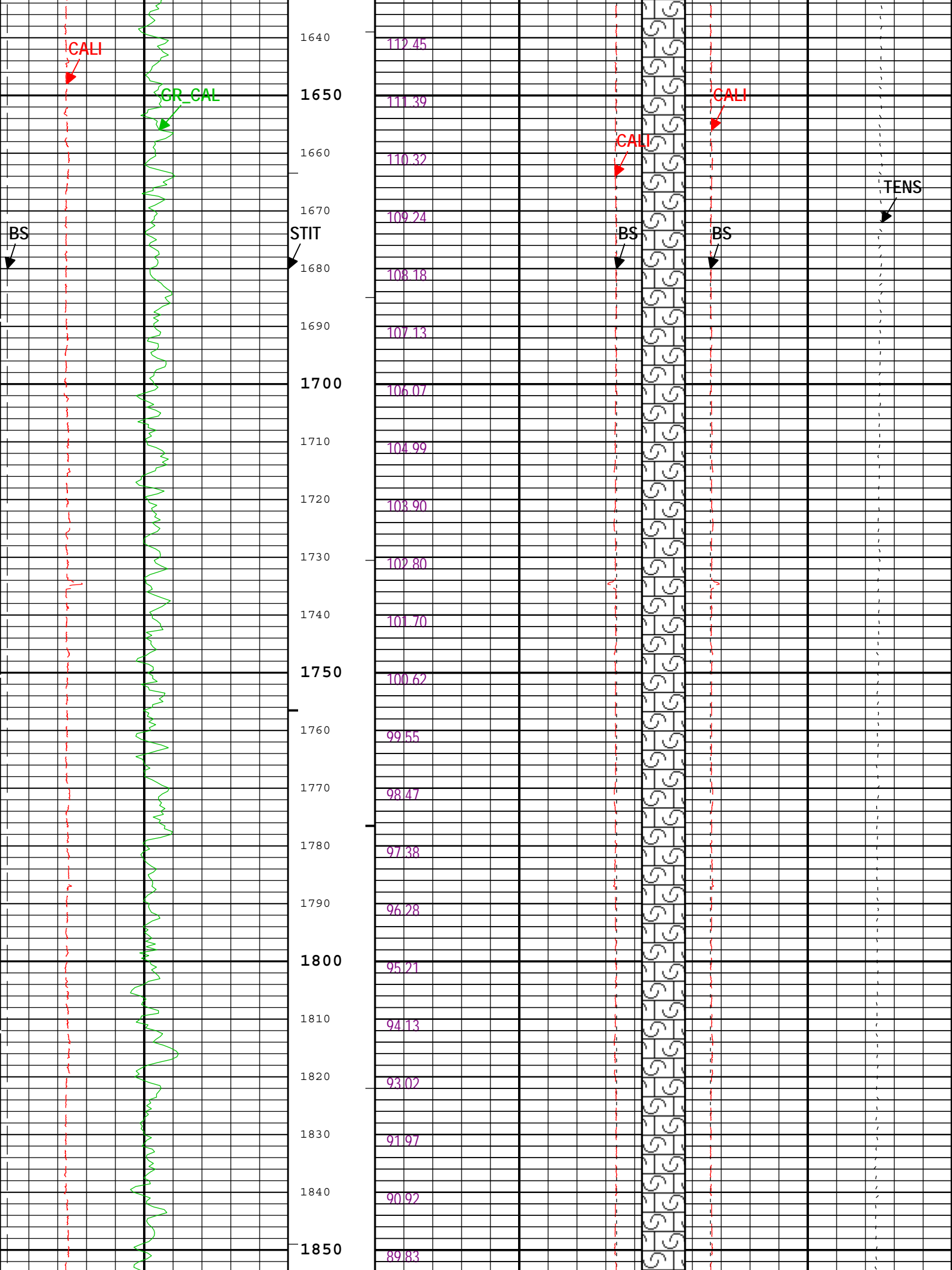


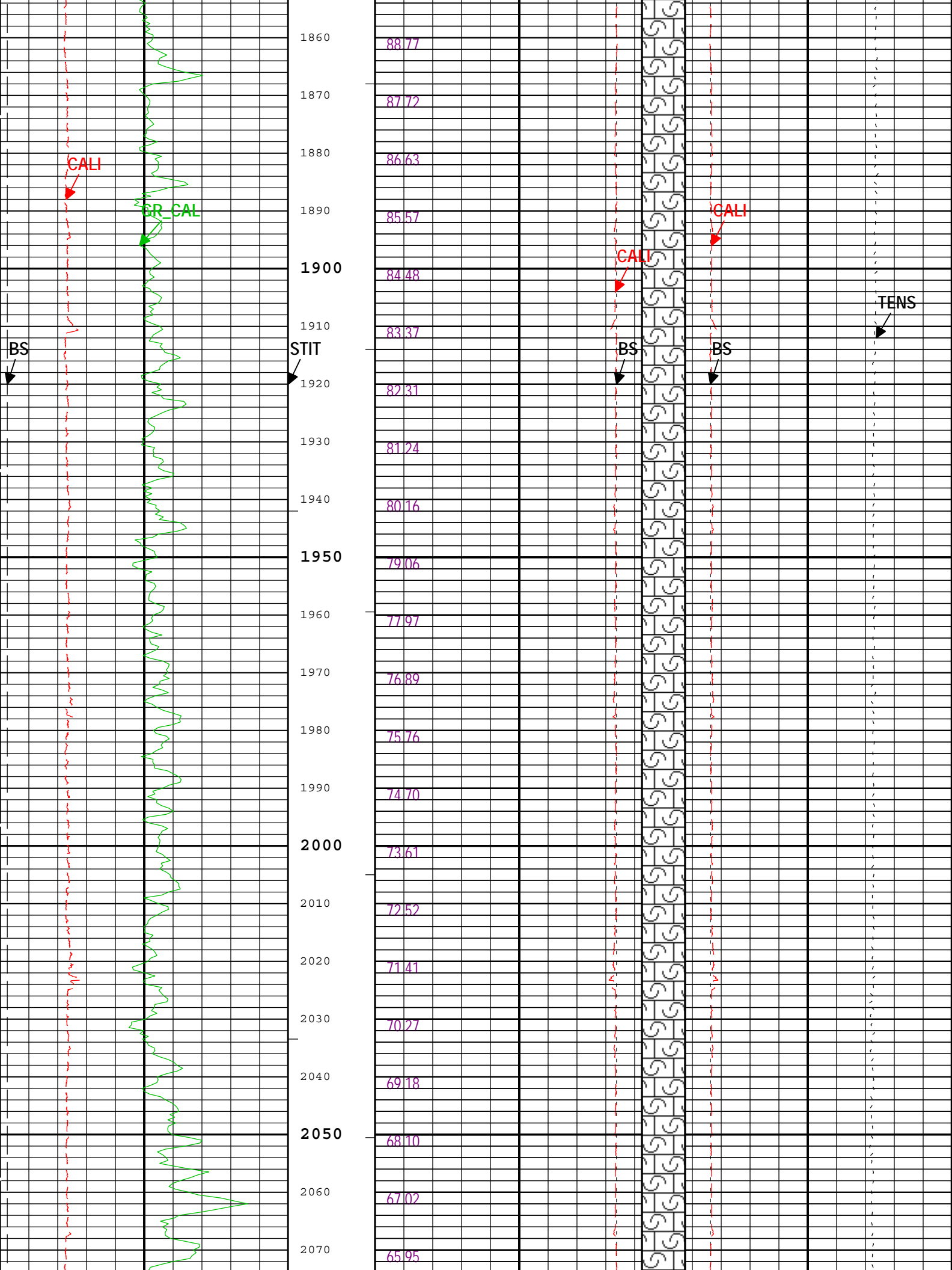


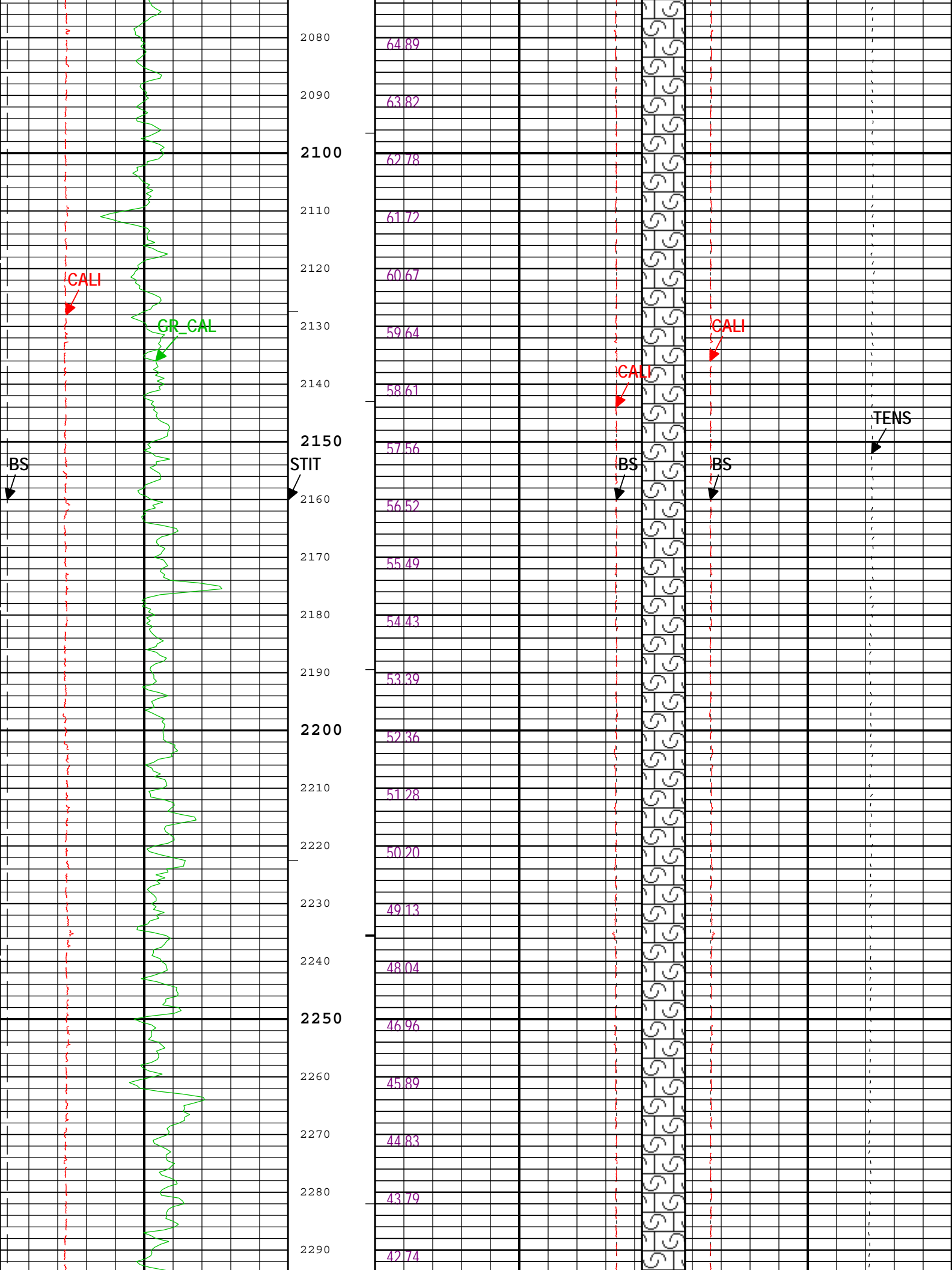


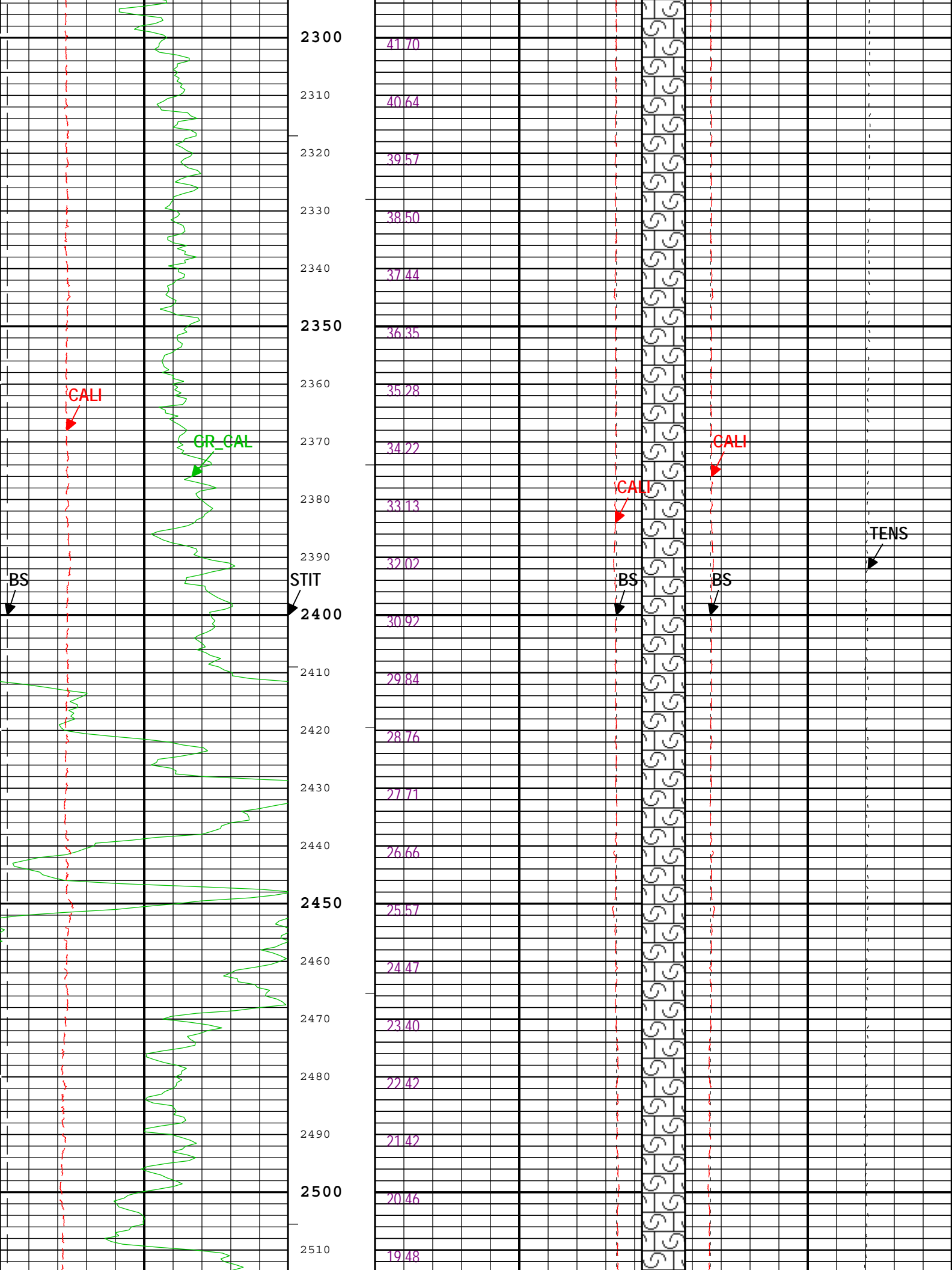


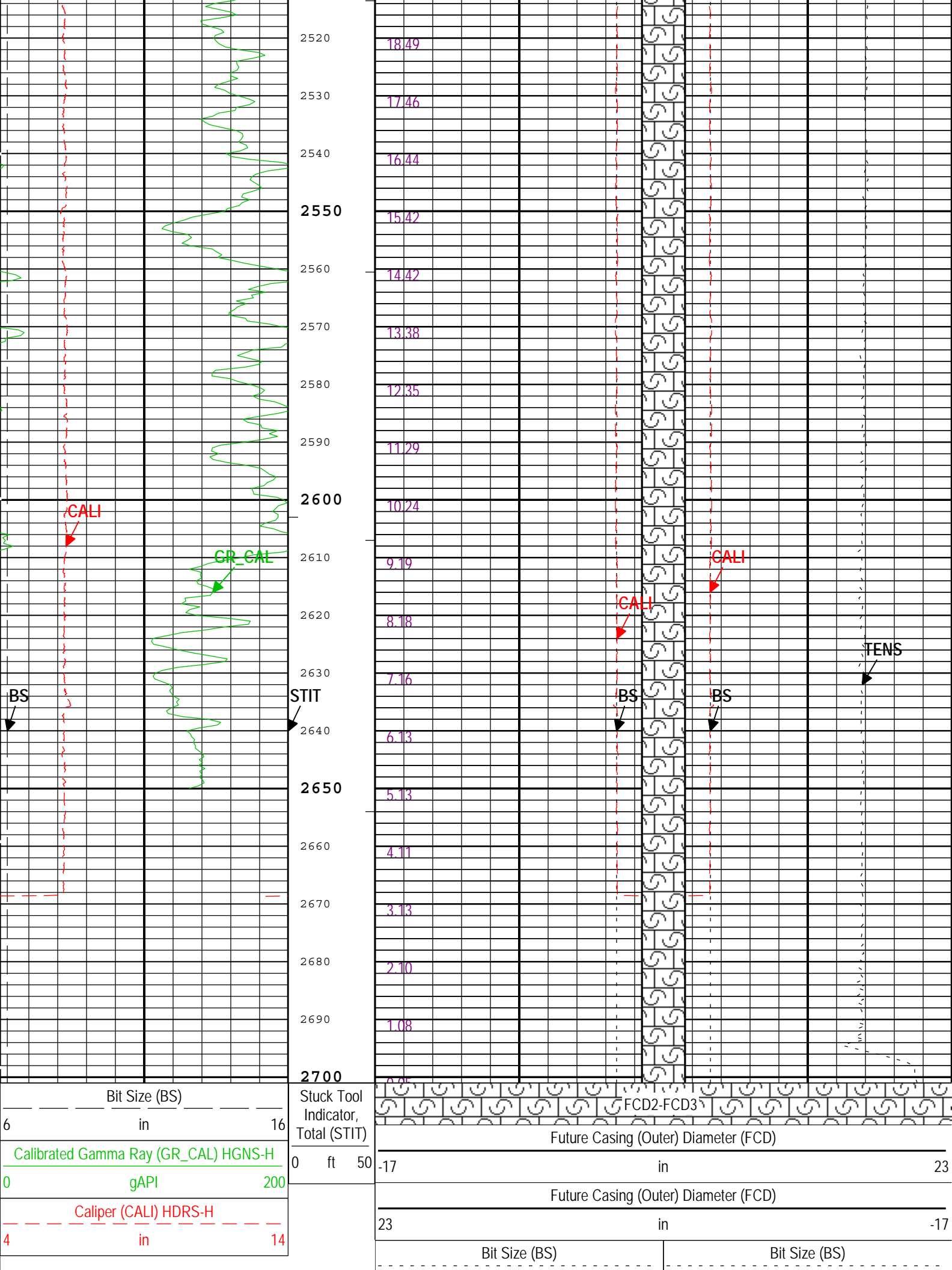












23	in	3	3	in	23
Caliper (CALI) HDRS-H			Cable Tension (TENS)		
23	in	3	6000	lbf	0
Integrated Cement Volume (ICV) ft3			Caliper (CALI) HDRS-H		
			3	in	23

TIME_1900 - Time Marked every 60.00 (s)

└─ICV - Integrated Cement Volume every 10.00 (ft3)

└─IHV - Integrated Hole Volume every 10.00 (ft3)

└─ICV - Integrated Cement Volume every 100.00 (ft3)

└─IHV - Integrated Hole Volume every 100.00 (ft3)

Description: Format: Log (Noble East Caliper) Index Scale: 5 in per 100 ft Index Unit: ft Index Type: Measured Depth Creation Date: 17-Nov-2014 12:04:21

Channel Processing Parameters				
Parameter	Description	Tool	Value	Unit
BHS	Borehole Status (Open or Cased Hole)	Borehole	Open	
BS	Bit Size	WLSESSION	6.25	in
CALI_SHIFT	CALI Supplementary Offset	HDRS-H	0	in
CBLO	Casing Bottom (Logger)	WLSESSION	498	ft
CSODDRL	Casing Outer Diameter - Zoned along driller depths	WLSESSION	7	in
FCD	Future Casing (Outer) Diameter	WLSESSION	4.5	in
GCSE_DOWN_PASS	Generalized Caliper Selection for WL Log Down Passes	Borehole	BS	
GCSE_UP_PASS	Generalized Caliper Selection for WL Log Up Passes	Borehole	CALI	
TD	Total Measured Depth	Borehole	2695	ft
Tool Control Parameters				
Parameter	Description	Tool	Value	Unit
MAX_LOG_SPEED	Toolstring Maximum Logging Speed	WLSESSION	3600	ft/h

Company:	Omimex Petroleum Inc	Schlumberger
Well:	Mailander 4-34-6-45	
Field:	Ballyneal	
County:	Phillips	
State:	Colorado	

Platform Express

Caliper

