

**Exhibit A--Site Location**  
**Location: DOE 1-W-28**  
*Williams Production RMT*



0 250 500 1,000  
 Feet

- Legend**
- Location Name
  - Road
  - Perennial Stream
  - - - Intermittent Stream



Area Enlarged in Exhibit C-1

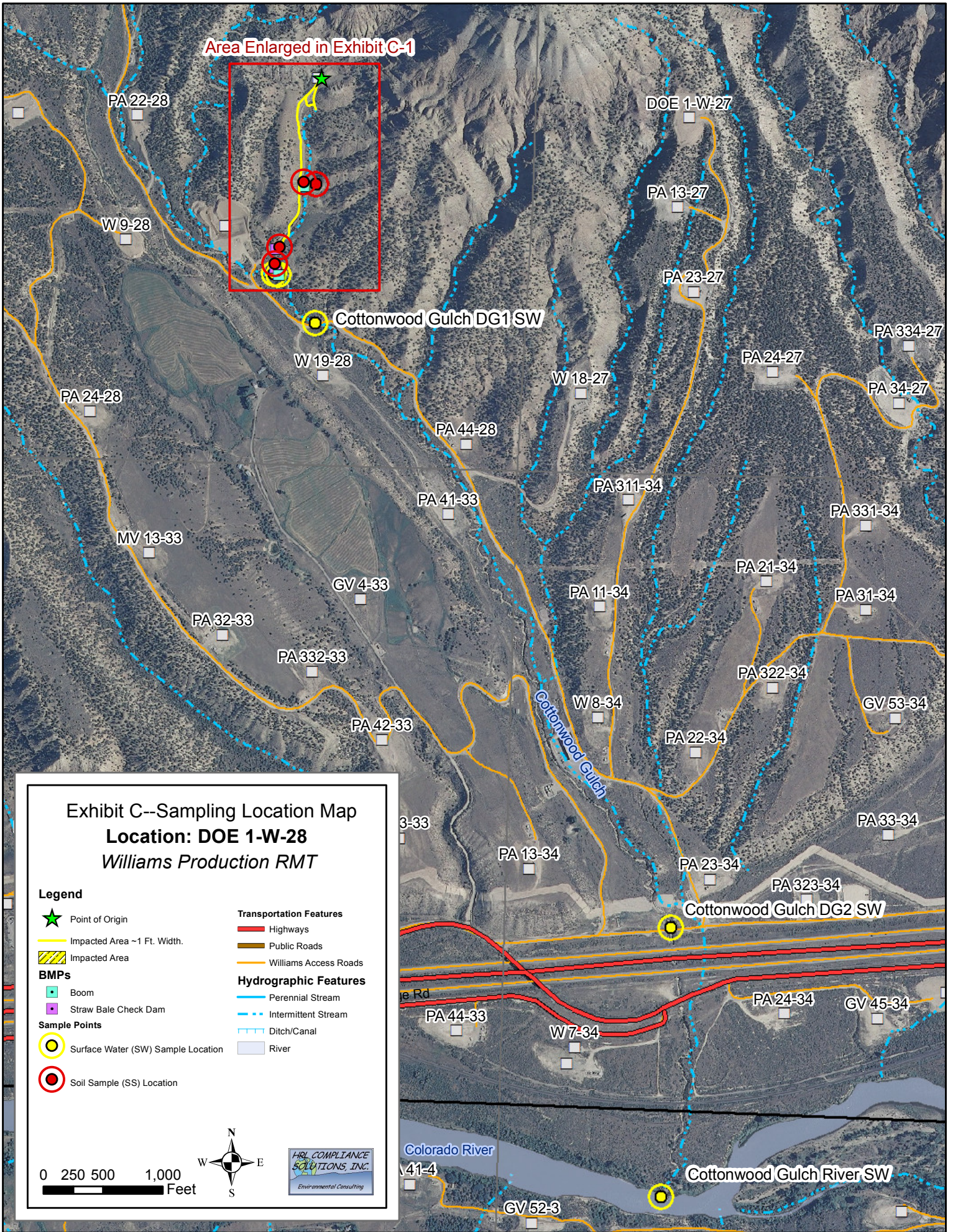


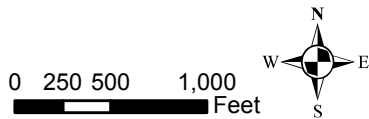
Exhibit C--Sampling Location Map

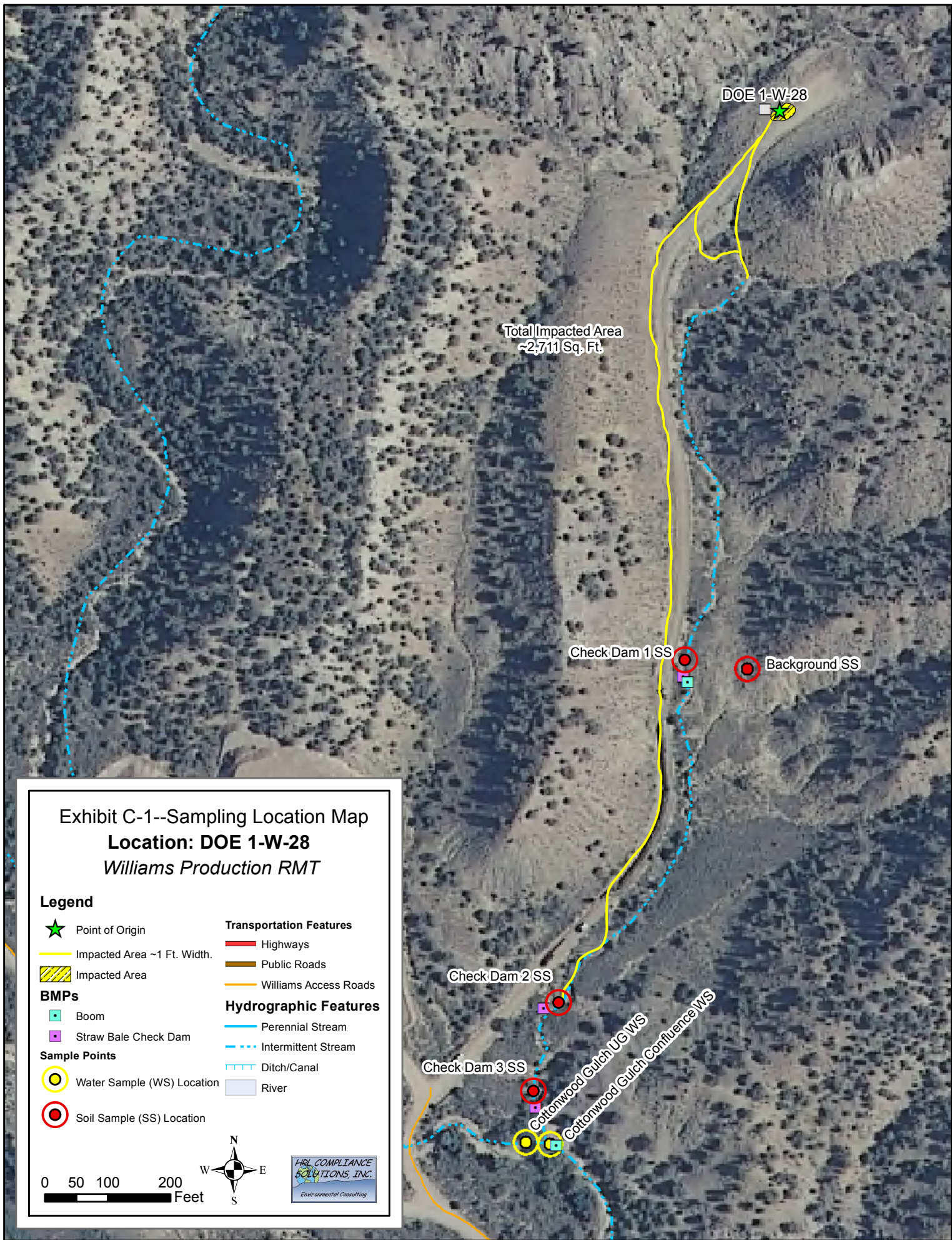
Location: DOE 1-W-28

Williams Production RMT

Legend

- Point of Origin
- Impacted Area ~1 Ft. Width.
- Impacted Area
- BMPs**
  - Boom
  - Straw Bale Check Dam
- Sample Points**
  - Surface Water (SW) Sample Location
  - Soil Sample (SS) Location
- Transportation Features**
  - Highways
  - Public Roads
  - Williams Access Roads
- Hydrographic Features**
  - Perennial Stream
  - Intermittent Stream
  - Ditch/Canal
  - River









Technical Report for

HRL Compliance Solutions

Pure Energy Release Job#10-347

Accutest Job Number: D12624

Sampling Date: 04/16/10

Report to:

HRL Compliance Solutions  
744 Horizon Court Suite 140  
Grand Junction, CO 81506  
mmumby@hrlcomp.com; krowe@hrlcomp.com

ATTN: Mark Mumby

Total number of pages in report: **31**



Test results contained within this data package meet the requirements of the National Environmental Laboratory Accreditation Conference and/or state specific certification programs as applicable.

Jesse L. Smith  
Laboratory Director

Client Service contact: Shea Greiner 303-425-6021

Certifications: CO, ID, NE, NM, ND (R-027) (PW) UT (NELAP CO00049)

This report shall not be reproduced, except in its entirety, without the written approval of Accutest Laboratories.  
Test results relate only to samples analyzed.



# Table of Contents

-1-

<b>Section 1: Sample Summary .....</b>	<b>3</b>
<b>Section 2: Case Narrative/Conformance Summary .....</b>	<b>4</b>
<b>Section 3: Sample Results .....</b>	<b>5</b>
<b>3.1: D12624-1: CHECK DAM 1 .....</b>	<b>6</b>
<b>3.2: D12624-2: CHECK DAM 2 .....</b>	<b>8</b>
<b>3.3: D12624-3: CHECK DAM 3 .....</b>	<b>10</b>
<b>3.4: D12624-4: BACKGROUND .....</b>	<b>12</b>
<b>Section 4: Misc. Forms .....</b>	<b>14</b>
<b>4.1: Chain of Custody .....</b>	<b>15</b>
<b>Section 5: Metals Analysis - QC Data Summaries .....</b>	<b>16</b>
<b>5.1: Prep QC MP1697: As .....</b>	<b>17</b>
<b>5.2: Prep QC MP1710: Ca,Mg,Na,Sodium Adsorption Ratio .....</b>	<b>22</b>
<b>Section 6: General Chemistry - QC Data Summaries .....</b>	<b>30</b>
<b>6.1: Method Blank and Spike Results Summary .....</b>	<b>31</b>

1

2

3

4

5

6



## Sample Summary

HRL Compliance Solutions

Job No: D12624

Pure Energy Release Job#10-347

Sample Number	Collected Date	Time By	Received	Matrix Code	Type	Client Sample ID
D12624-1	04/16/10	10:25 KR	04/20/10	SO	Soil	CHECK DAM 1
D12624-2	04/16/10	10:50 KR	04/20/10	SO	Soil	CHECK DAM 2
D12624-3	04/16/10	11:00 KR	04/20/10	SO	Soil	CHECK DAM 3
D12624-4	04/16/10	10:00 KR	04/20/10	SO	Soil	BACKGROUND

---

Soil samples reported on a dry weight basis unless otherwise indicated on result page.

## CASE NARRATIVE / CONFORMANCE SUMMARY

**Client:** HRL Compliance Solutions

**Job No** D12624

**Site:** Pure Energy Release Job#10-347

**Report Dat** 4/23/2010 4:50:16 PM

On 04/20/2010, four (4) samples were received at Accutest Mountain States at a temperature of 2.5°C. The samples were intact and properly preserved, unless noted below. An Accutest Mountain States Job Number of D12624 was assigned to the project. Laboratory sample IDs, client sample IDs, and dates of sample collection are detailed in the report's Results Summary

Specified quality control criteria were achieved for this job except as noted below. For more information, please refer to the analytical results and QC summary pages.

### Metals By Method SW846 6010B

**Matrix** AQ

**Batch ID:** MP1710

- All samples were digested and analyzed within the recommended method holding time.
- All method blanks for this batch meet method specific criteria.
- Samples D12461-4AMS and D12461-4AMSD were used as the QC samples for metals.

### Metals By Method SW846 6020

**Matrix** SO

**Batch ID:** MP1697

- All samples were digested and analyzed within the recommended method holding time.
- All method blanks for this batch meet method specific criteria.
- Samples D12625-1MS, D12625-1MSD, and D12625-1SDL were used as the QC samples for metals.
- The serial dilution RPD of Arsenic is outside control limits for sample MP1697-SD1. Probable cause due to sample homogeneity.

### Wet Chemistry By Method LADNR29B

**Matrix** SO

**Batch ID:** MP1710

- Sodium Adsorption Ratio: Calculated as:  $(Na \text{ meq/L}) / \sqrt{[(Ca \text{ meq/L}) + (Mg \text{ meq/L})/2]}$

### Wet Chemistry By Method SM19 2540B M

**Matrix** SO

**Batch ID:** GN4002

- The data for SM19 2540B M meets quality control requirements.

### Wet Chemistry By Method SW846 9045C

**Matrix** SO

**Batch ID:** GN4004

- The following samples were run outside of holding time for method SW846 9045C: D12624-1, through D12624-4

Accutest Mountain States certifies that data reported for samples received, listed on the associated custody chain or analytical task order, were produced to specifications meeting Accutest Mountain States's Quality System precision, accuracy and complete

Estimated non-standard method measurement uncertainty data is available on request, based on quality control bias and implicit for standard methods. Acceptable uncertainty requires tested parameter quality control data to meet method criteria.

Accutest Mountain States is not responsible for data quality assumptions if partial reports are used and recommends that this report be used in its entirety. Data release is authorized by Accutest Mountain States indicated via signature on the report cov



## Sample Results

---

## Report of Analysis

---

## Report of Analysis

<b>Client Sample ID:</b> CHECK DAM 1	<b>Date Sampled:</b> 04/16/10
<b>Lab Sample ID:</b> D12624-1	<b>Date Received:</b> 04/20/10
<b>Matrix:</b> SO - Soil	<b>Percent Solids:</b> n/a
<b>Project:</b> Pure Energy Release Job#10-347	

### SAR Metals Analysis

Analyte	Result	RL	Units	DF	Prep	Analyzed By	Method	Prep Method
Calcium	81.9	2.0	mg/l	1	04/22/10	04/22/10 JM	SW846 6010B <sup>1</sup>	EPA 200.7 <sup>3</sup>
Magnesium	9.21	1.0	mg/l	1	04/22/10	04/22/10 JM	SW846 6010B <sup>1</sup>	EPA 200.7 <sup>3</sup>
Sodium	455	2.0	mg/l	1	04/22/10	04/23/10 JM	SW846 6010B <sup>2</sup>	EPA 200.7 <sup>3</sup>

- (1) Instrument QC Batch: MA598
- (2) Instrument QC Batch: MA600
- (3) Prep QC Batch: MP1710

RL = Reporting Limit

## Report of Analysis

<b>Client Sample ID:</b> CHECK DAM 1	<b>Date Sampled:</b> 04/16/10
<b>Lab Sample ID:</b> D12624-1	<b>Date Received:</b> 04/20/10
<b>Matrix:</b> SO - Soil	<b>Percent Solids:</b> n/a
<b>Project:</b> Pure Energy Release Job#10-347	

### General Chemistry

Analyte	Result	RL	Units	DF	Analyzed	By	Method
Sodium Adsorption Ratio <sup>a</sup>	12.7		ratio	1	04/23/10 11:00	JM	LADNR29B
Specific Conductivity	2440	1.0	umhos/cm	1	04/22/10	JD	DEPT.OF AG, BOOK N9
pH	7.73		su	1	04/20/10 12:00	JD	SW846 9045C

(a) Calculated as:  $(Na \text{ meq/L}) / \sqrt{[(Ca \text{ meq/L}) + (Mg \text{ meq/L})/2]}$

RL = Reporting Limit

## Report of Analysis

<b>Client Sample ID:</b> CHECK DAM 2	<b>Date Sampled:</b> 04/16/10
<b>Lab Sample ID:</b> D12624-2	<b>Date Received:</b> 04/20/10
<b>Matrix:</b> SO - Soil	<b>Percent Solids:</b> n/a
<b>Project:</b> Pure Energy Release Job#10-347	

### SAR Metals Analysis

Analyte	Result	RL	Units	DF	Prep	Analyzed By	Method	Prep Method
Calcium	155	2.0	mg/l	1	04/22/10	04/22/10 JM	SW846 6010B <sup>1</sup>	EPA 200.7 <sup>3</sup>
Magnesium	29.8	1.0	mg/l	1	04/22/10	04/22/10 JM	SW846 6010B <sup>1</sup>	EPA 200.7 <sup>3</sup>
Sodium	490	2.0	mg/l	1	04/22/10	04/23/10 JM	SW846 6010B <sup>2</sup>	EPA 200.7 <sup>3</sup>

- (1) Instrument QC Batch: MA598
- (2) Instrument QC Batch: MA600
- (3) Prep QC Batch: MP1710

RL = Reporting Limit

## Report of Analysis

<b>Client Sample ID:</b> CHECK DAM 2	<b>Date Sampled:</b> 04/16/10
<b>Lab Sample ID:</b> D12624-2	<b>Date Received:</b> 04/20/10
<b>Matrix:</b> SO - Soil	<b>Percent Solids:</b> n/a
<b>Project:</b> Pure Energy Release Job#10-347	

### General Chemistry

Analyte	Result	RL	Units	DF	Analyzed	By	Method
Sodium Adsorption Ratio <sup>a</sup>	9.44		ratio	1	04/23/10 11:07	JM	LADNR29B
Specific Conductivity	2960	1.0	umhos/cm	1	04/22/10	JD	DEPT.OF AG, BOOK N9
pH	7.70		su	1	04/20/10 12:00	JD	SW846 9045C

(a) Calculated as:  $(Na \text{ meq/L}) / \sqrt{[(Ca \text{ meq/L}) + (Mg \text{ meq/L})/2]}$

RL = Reporting Limit

## Report of Analysis

<b>Client Sample ID:</b> CHECK DAM 3	
<b>Lab Sample ID:</b> D12624-3	<b>Date Sampled:</b> 04/16/10
<b>Matrix:</b> SO - Soil	<b>Date Received:</b> 04/20/10
	<b>Percent Solids:</b> n/a
<b>Project:</b> Pure Energy Release Job#10-347	

### SAR Metals Analysis

Analyte	Result	RL	Units	DF	Prep	Analyzed By	Method	Prep Method
Calcium	104	2.0	mg/l	1	04/22/10	04/22/10 JM	SW846 6010B <sup>1</sup>	EPA 200.7 <sup>3</sup>
Magnesium	18.2	1.0	mg/l	1	04/22/10	04/22/10 JM	SW846 6010B <sup>1</sup>	EPA 200.7 <sup>3</sup>
Sodium	468	2.0	mg/l	1	04/22/10	04/23/10 JM	SW846 6010B <sup>2</sup>	EPA 200.7 <sup>3</sup>

- (1) Instrument QC Batch: MA598
- (2) Instrument QC Batch: MA600
- (3) Prep QC Batch: MP1710

RL = Reporting Limit

## Report of Analysis

<b>Client Sample ID:</b> CHECK DAM 3	<b>Date Sampled:</b> 04/16/10
<b>Lab Sample ID:</b> D12624-3	<b>Date Received:</b> 04/20/10
<b>Matrix:</b> SO - Soil	<b>Percent Solids:</b> n/a
<b>Project:</b> Pure Energy Release Job#10-347	

### General Chemistry

Analyte	Result	RL	Units	DF	Analyzed	By	Method
Sodium Adsorption Ratio <sup>a</sup>	11.1		ratio	1	04/23/10 11:13	JM	LADNR29B
Specific Conductivity	3010	1.0	umhos/cm	1	04/22/10	JD	DEPT.OF AG, BOOK N9
pH	8.37		su	1	04/20/10 12:00	JD	SW846 9045C

(a) Calculated as:  $(Na \text{ meq/L}) / \sqrt{[(Ca \text{ meq/L}) + (Mg \text{ meq/L})/2]}$

RL = Reporting Limit

## Report of Analysis

<b>Client Sample ID:</b> BACKGROUND	
<b>Lab Sample ID:</b> D12624-4	<b>Date Sampled:</b> 04/16/10
<b>Matrix:</b> SO - Soil	<b>Date Received:</b> 04/20/10
	<b>Percent Solids:</b> 95.3
<b>Project:</b> Pure Energy Release Job#10-347	

### SAR Metals Analysis

Analyte	Result	RL	Units	DF	Prep	Analyzed By	Method	Prep Method
Arsenic	7.7	0.34	mg/kg	5	04/20/10	04/23/10 SES	SW846 6020 <sup>2</sup>	SW846 3050B <sup>4</sup>
Calcium	9.92	2.0	mg/l	1	04/22/10	04/22/10 JM	SW846 6010B <sup>1</sup>	EPA 200.7 <sup>5</sup>
Magnesium	1.84	1.0	mg/l	1	04/22/10	04/22/10 JM	SW846 6010B <sup>1</sup>	EPA 200.7 <sup>5</sup>
Sodium	192	2.0	mg/l	1	04/22/10	04/23/10 JM	SW846 6010B <sup>3</sup>	EPA 200.7 <sup>5</sup>

- (1) Instrument QC Batch: MA598
- (2) Instrument QC Batch: MA599
- (3) Instrument QC Batch: MA600
- (4) Prep QC Batch: MP1697
- (5) Prep QC Batch: MP1710

RL = Reporting Limit

## Report of Analysis

<b>Client Sample ID:</b> BACKGROUND	<b>Date Sampled:</b> 04/16/10
<b>Lab Sample ID:</b> D12624-4	<b>Date Received:</b> 04/20/10
<b>Matrix:</b> SO - Soil	<b>Percent Solids:</b> 95.3
<b>Project:</b> Pure Energy Release Job#10-347	

### General Chemistry

Analyte	Result	RL	Units	DF	Analyzed	By	Method
Sodium Adsorption Ratio <sup>a</sup>	14.7		ratio	1	04/23/10 11:20	JM	LADNR29B
Solids, Percent	95.3		%	1	04/20/10	SWT	SM19 2540B M
Specific Conductivity	945	1.0	umhos/cm	1	04/22/10	JD	DEPT.OF AG, BOOK N9
pH	9.72		su	1	04/20/10 12:00	JD	SW846 9045C

(a) Calculated as:  $(Na \text{ meq/L}) / \sqrt{[(Ca \text{ meq/L}) + (Mg \text{ meq/L})/2]}$

RL = Reporting Limit



## Misc. Forms

---

### Custody Documents and Other Forms

---

Includes the following where applicable:

- Chain of Custody





## Metals Analysis

### QC Data Summaries

---

Includes the following where applicable:

- Method Blank Summaries
- Matrix Spike and Duplicate Summaries
- Blank Spike and Lab Control Sample Summaries
- Serial Dilution Summaries

BLANK RESULTS SUMMARY  
Part 2 - Method Blanks

Login Number: D12624  
Account: HRLCCOGJ - HRL Compliance Solutions  
Project: Pure Energy Release Job#10-347

QC Batch ID: MP1697  
Matrix Type: SOLID

Methods: SW846 6020  
Units: mg/kg

Prep Date: 04/20/10

Metal	RL	IDL	MDL	MB raw	final
Aluminum	25	.24	.89		
Arsenic	0.40	.058	.26	0.053	<0.40
Calcium	200	2.6	6.1		
Copper	1.0	.0045	.14		
Iron	20	2.1	6.1		
Lead	0.25	.0013	.18		
Magnesium	50	.096	1.3		
Potassium	100	4.3	9.1		
Selenium	0.20	.072	.14		
Sodium	250	.25	1.8		
Uranium	0.25	.0005	.12		

Associated samples MP1697: D12624-4

Results < IDL are shown as zero for calculation purposes  
(\* ) Outside of QC limits  
(anr) Analyte not requested

5.1.1  
5

MATRIX SPIKE AND DUPLICATE RESULTS SUMMARY

Login Number: D12624  
 Account: HRLCCOGJ - HRL Compliance Solutions  
 Project: Pure Energy Release Job#10-347

QC Batch ID: MP1697  
 Matrix Type: SOLID

Methods: SW846 6020  
 Units: mg/kg

Prep Date: 04/20/10

Metal	D12625-1 Original MS		SpikeLot MPICPR1	% Rec	QC Limits
Aluminum					
Arsenic	8.3	182	177	98.0	60-119
Calcium					
Copper					
Iron					
Lead					
Magnesium					
Potassium					
Selenium					
Sodium					
Uranium					

Associated samples MP1697: D12624-4

Results < IDL are shown as zero for calculation purposes  
 (\*) Outside of QC limits  
 (N) Matrix Spike Rec. outside of QC limits  
 (anr) Analyte not requested

5.1.2  
 5

MATRIX SPIKE AND DUPLICATE RESULTS SUMMARY

Login Number: D12624  
 Account: HRLCCOGJ - HRL Compliance Solutions  
 Project: Pure Energy Release Job#10-347

QC Batch ID: MP1697  
 Matrix Type: SOLID

Methods: SW846 6020  
 Units: mg/kg

Prep Date: 04/20/10

Metal	D12625-1 Original MSD	Spikelot MPICPR1	% Rec	MSD RPD	QC Limit
Aluminum					
Arsenic	8.3	178	177	95.8	2.2 20
Calcium					
Copper					
Iron					
Lead					
Magnesium					
Potassium					
Selenium					
Sodium					
Uranium					

Associated samples MP1697: D12624-4

Results < IDL are shown as zero for calculation purposes  
 (\*) Outside of QC limits  
 (N) Matrix Spike Rec. outside of QC limits  
 (anr) Analyte not requested

5.1.2  
5

SPIKE BLANK AND LAB CONTROL SAMPLE SUMMARY

Login Number: D12624  
 Account: HRLCCOGJ - HRL Compliance Solutions  
 Project: Pure Energy Release Job#10-347

QC Batch ID: MP1697  
 Matrix Type: SOLID

Methods: SW846 6020  
 Units: mg/kg

Prep Date: 04/20/10

Metal	BSP Result	Spikelot MPICPR1	% Rec	QC Limits
Aluminum				
Arsenic	191	200	95.5	80-120
Calcium				
Copper				
Iron				
Lead				
Magnesium				
Potassium				
Selenium				
Sodium				
Uranium				

Associated samples MP1697: D12624-4

Results < IDL are shown as zero for calculation purposes  
 (\*) Outside of QC limits  
 (anr) Analyte not requested

5.1.3  
5

SERIAL DILUTION RESULTS SUMMARY

Login Number: D12624  
 Account: HRLCCOGJ - HRL Compliance Solutions  
 Project: Pure Energy Release Job#10-347

QC Batch ID: MP1697  
 Matrix Type: SOLID

Methods: SW846 6020  
 Units: ug/l

Prep Date: 04/20/10

Metal	D12625-1		QC	
	Original	SDL 5:25	%DIF	Limits
Aluminum				
Arsenic	94.1	105	11.6*(a)	0-10
Calcium				
Copper				
Iron				
Lead				
Magnesium				
Potassium				
Selenium				
Sodium				
Uranium				

Associated samples MP1697: D12624-4

Results < IDL are shown as zero for calculation purposes  
 (\*) Outside of QC limits  
 (anr) Analyte not requested  
 (a) Serial dilution indicates possible matrix interference.

5.1.4  
 5

BLANK RESULTS SUMMARY  
Part 2 - Method Blanks

Login Number: D12624  
Account: HRLCCOGJ - HRL Compliance Solutions  
Project: Pure Energy Release Job#10-347

QC Batch ID: MP1710  
Matrix Type: AQUEOUS

Methods: LADNR29B, SW846 6010B  
Units: ug/l

Prep Date: 04/22/10

Metal	RL	IDL	MDL	MB raw	final
Aluminum	500	160	250		
Antimony	150	68	65		
Arsenic	130	35	33		
Barium	50	1	12		
Beryllium	50	17	22		
Boron	250	17	93		
Cadmium	50	3.7	6		
Calcium	2000	9	46	121	<2000
Chromium	50	3	8		
Cobalt	25	3	1.5		
Copper	25	9	14		
Iron	350	28	50		
Lead	250	17	16		
Lithium	10		8		
Magnesium	1000	3.1	62	64.0	<1000
Manganese	25	.5	3.5		
Molybdenum	50	7.5	6		
Nickel	150	4.1	3		
Phosphorus	500	230	270		
Potassium	5000	57	2700		
Selenium	250	25	36		
Silicon	250	48	100		
Silver	150	1.5	1.5		
Sodium	2000	17	110	-590	<2000
Strontium	25		17		
Thallium	50	7	11		
Tin	250	13	22		
Titanium	50	.65	3.5		
Uranium	250	22	20		
Vanadium	50	3.4	1.5		
Zinc	150	2.6	8.5		

Associated samples MP1710: D12624-1, D12624-2, D12624-3, D12624-4

Results < IDL are shown as zero for calculation purposes  
(\* ) Outside of QC limits

BLANK RESULTS SUMMARY  
Part 2 - Method Blanks

Login Number: D12624  
Account: HRLCCOGJ - HRL Compliance Solutions  
Project: Pure Energy Release Job#10-347

QC Batch ID: MP1710  
Matrix Type: AQUEOUS

Methods: LADNR29B, SW846 6010B  
Units: ug/l

Prep Date:

Metal

(anr) Analyte not requested

5.2.1

5

MATRIX SPIKE AND DUPLICATE RESULTS SUMMARY

Login Number: D12624  
 Account: HRLCCOGJ - HRL Compliance Solutions  
 Project: Pure Energy Release Job#10-347

QC Batch ID: MP1710  
 Matrix Type: AQUEOUS

Methods: LADNR29B, SW846 6010B  
 Units: ug/l

Prep Date: 04/22/10

Metal	D12461-4A Original MS		Spike/lot MPICPR1 % Rec		QC Limits
Aluminum					
Antimony					
Arsenic					
Barium					
Beryllium					
Boron					
Cadmium					
Calcium	96200	146000	50000	99.6	75-125
Chromium					
Cobalt					
Copper					
Iron					
Lead					
Lithium					
Magnesium	32900	83300	50000	100.8	75-125
Manganese					
Molybdenum					
Nickel					
Phosphorus					
Potassium					
Selenium					
Silicon					
Silver					
Sodium	112000	165000	50000	106.0	75-125
Strontium					
Thallium					
Tin					
Titanium					
Uranium					
Vanadium					
Zinc					

Associated samples MP1710: D12624-1, D12624-2, D12624-3, D12624-4

Results < IDL are shown as zero for calculation purposes  
 (\*) Outside of QC limits

5.2.2  
 5

MATRIX SPIKE AND DUPLICATE RESULTS SUMMARY

Login Number: D12624  
Account: HRLCCOGJ - HRL Compliance Solutions  
Project: Pure Energy Release Job#10-347

QC Batch ID: MP1710  
Matrix Type: AQUEOUS

Methods: LADNR29B, SW846 6010B  
Units: ug/l

Prep Date:

Metal

(N) Matrix Spike Rec. outside of QC limits  
(anr) Analyte not requested

5.2.2

5

MATRIX SPIKE AND DUPLICATE RESULTS SUMMARY

Login Number: D12624  
 Account: HRLCCOGJ - HRL Compliance Solutions  
 Project: Pure Energy Release Job#10-347

QC Batch ID: MP1710  
 Matrix Type: AQUEOUS

Methods: LADNR29B, SW846 6010B  
 Units: ug/l

Prep Date: 04/22/10

Metal	D12461-4A Original MSD		SpikeLot MPICPR1 % Rec		MSD RPD	QC Limit
Aluminum						
Antimony						
Arsenic						
Barium						
Beryllium						
Boron						
Cadmium						
Calcium	96200	143000	50000	93.6	2.1	20
Chromium						
Cobalt						
Copper						
Iron						
Lead						
Lithium						
Magnesium	32900	79300	50000	92.8	4.9	20
Manganese						
Molybdenum						
Nickel						
Phosphorus						
Potassium						
Selenium						
Silicon						
Silver						
Sodium	112000	158000	50000	92.0	4.3	20
Strontium						
Thallium						
Tin						
Titanium						
Uranium						
Vanadium						
Zinc						

Associated samples MP1710: D12624-1, D12624-2, D12624-3, D12624-4

Results < IDL are shown as zero for calculation purposes  
 (\*) Outside of QC limits

5.2.2  
5

MATRIX SPIKE AND DUPLICATE RESULTS SUMMARY

Login Number: D12624  
Account: HRLCCOGJ - HRL Compliance Solutions  
Project: Pure Energy Release Job#10-347

QC Batch ID: MP1710  
Matrix Type: AQUEOUS

Methods: LADNR29B, SW846 6010B  
Units: ug/l

Prep Date:

Metal

(N) Matrix Spike Rec. outside of QC limits  
(anr) Analyte not requested

SPIKE BLANK AND LAB CONTROL SAMPLE SUMMARY

Login Number: D12624  
 Account: HRLCCOGJ - HRL Compliance Solutions  
 Project: Pure Energy Release Job#10-347

QC Batch ID: MP1710  
 Matrix Type: AQUEOUS

Methods: LADNR29B, SW846 6010B  
 Units: ug/l

Prep Date: 04/22/10

Metal	BSP Result	Spikelot MPICPR1	% Rec	QC Limits
Aluminum				
Antimony				
Arsenic				
Barium				
Beryllium				
Boron				
Cadmium				
Calcium	49400	50000	98.8	80-120
Chromium				
Cobalt				
Copper				
Iron				
Lead				
Lithium				
Magnesium	49600	50000	99.2	80-120
Manganese				
Molybdenum				
Nickel				
Phosphorus				
Potassium				
Selenium				
Silicon				
Silver				
Sodium	50000	50000	100.0	80-120
Strontium				
Thallium				
Tin				
Titanium				
Uranium				
Vanadium				
Zinc				

Associated samples MP1710: D12624-1, D12624-2, D12624-3, D12624-4

Results < IDL are shown as zero for calculation purposes  
 (\*) Outside of QC limits

5.2.3  
5

SPIKE BLANK AND LAB CONTROL SAMPLE SUMMARY

Login Number: D12624  
Account: HRLCCOGJ - HRL Compliance Solutions  
Project: Pure Energy Release Job#10-347

QC Batch ID: MP1710  
Matrix Type: AQUEOUS

Methods: LADNR29B, SW846 6010B  
Units: ug/l

Prep Date:

Metal

(anr) Analyte not requested

5.2.3

5



## General Chemistry

---

### QC Data Summaries

---

Includes the following where applicable:

- Method Blank and Blank Spike Summaries
- Duplicate Summaries
- Matrix Spike Summaries

METHOD BLANK AND SPIKE RESULTS SUMMARY  
GENERAL CHEMISTRY

Login Number: D12624  
Account: HRLCCOGJ - HRL Compliance Solutions  
Project: Pure Energy Release Job#10-347

Analyte	Batch ID	RL	MB Result	Units	Spike Amount	BSP Result	BSP %Recov	QC Limits
Specific Conductivity	GP1818/GN4041			umhos/cm	9990	10200	101.6	90-110%
pH	GN4004			su	8.00	7.96	99.5	99.3-100.7%

Associated Samples:

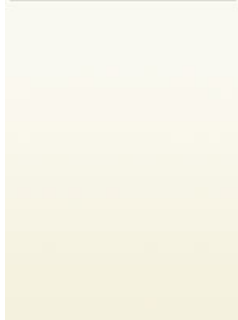
Batch GN4004: D12624-1, D12624-2, D12624-3, D12624-4

Batch GP1818: D12624-1, D12624-2, D12624-3, D12624-4

(\*) Outside of QC limits

6.1

6



Technical Report for

HRL Compliance Solutions

Pure Energy Release Job#10-347

Accutest Job Number: D12559

Sampling Date: 04/13/10

Report to:

HRL Compliance Solutions  
744 Horizon Court Suite 140  
Grand Junction, CO 81506  
mmumby@hrlcomp.com; krowe@hrlcomp.com

ATTN: Mark Mumby

Total number of pages in report: **83**



Test results contained within this data package meet the requirements of the National Environmental Laboratory Accreditation Conference and/or state specific certification programs as applicable.

Jesse L. Smith  
Laboratory Director

Client Service contact: Shea Greiner 303-425-6021

Certifications: CO, ID, NE, NM, ND (R-027) (PW) UT (NELAP CO00049)

This report shall not be reproduced, except in its entirety, without the written approval of Accutest Laboratories.  
Test results relate only to samples analyzed.

# Table of Contents

-1-

<b>Section 1: Sample Summary .....</b>	<b>3</b>
<b>Section 2: Case Narrative/Conformance Summary .....</b>	<b>4</b>
<b>Section 3: Sample Results .....</b>	<b>8</b>
<b>3.1: D12559-1: CHECK DAM 1 .....</b>	9
<b>3.2: D12559-1A: CHECK DAM 1 .....</b>	12
<b>3.3: D12559-2: CHECK DAM 2 .....</b>	14
<b>3.4: D12559-2A: CHECK DAM 2 .....</b>	17
<b>3.5: D12559-3: CHECK DAM 3 .....</b>	19
<b>3.6: D12559-3A: CHECK DAM 3 .....</b>	22
<b>3.7: D12559-4F: UPRIGHT TANK .....</b>	24
<b>Section 4: Misc. Forms .....</b>	<b>25</b>
<b>4.1: Chain of Custody .....</b>	26
<b>Section 5: GC Volatiles - QC Data Summaries .....</b>	<b>29</b>
<b>5.1: Method Blank Summary .....</b>	30
<b>5.2: Blank Spike Summary .....</b>	32
<b>5.3: Matrix Spike/Matrix Spike Duplicate Summary .....</b>	34
<b>Section 6: GC Semi-volatiles - QC Data Summaries .....</b>	<b>36</b>
<b>6.1: Method Blank Summary .....</b>	37
<b>6.2: Blank Spike Summary .....</b>	39
<b>6.3: Matrix Spike/Matrix Spike Duplicate Summary .....</b>	41
<b>Section 7: Metals Analysis - QC Data Summaries .....</b>	<b>43</b>
<b>7.1: Prep QC MP1675: Ba,Cd,Cr,Cu,Pb,Ni,Se,Ag,Zn .....</b>	44
<b>7.2: Prep QC MP1676: As .....</b>	54
<b>7.3: Prep QC MP1689: Ba,Cd,Cr,Cu,Pb,Ni,Se,Ag,Zn .....</b>	59
<b>7.4: Prep QC MP1690: As .....</b>	67
<b>7.5: Prep QC MP1691: Hg .....</b>	71
<b>Section 8: General Chemistry - QC Data Summaries .....</b>	<b>75</b>
<b>8.1: Method Blank and Spike Results Summary .....</b>	76
<b>Section 9: Misc. Forms (Accutest Labs of New England, Inc.) .....</b>	<b>77</b>
<b>9.1: Chain of Custody .....</b>	78
<b>Section 10: General Chemistry - QC Data (Accutest Labs of New England, Inc.) .....</b>	<b>80</b>
<b>10.1: Method Blank and Spike Results Summary .....</b>	81
<b>10.2: Duplicate Results Summary .....</b>	82
<b>10.3: Matrix Spike Results Summary .....</b>	83



## Sample Summary

HRL Compliance Solutions

**Job No:** D12559

Pure Energy Release Job#10-347

Sample Number	Collected		Received	Matrix		Client Sample ID
	Date	Time By		Code	Type	
D12559-1	04/13/10	14:00 MM	04/16/10	SO	Soil	CHECK DAM 1
D12559-1A	04/13/10	14:00 MM	04/16/10	SO	Soil	CHECK DAM 1
D12559-2	04/13/10	14:20 MM	04/16/10	SO	Soil	CHECK DAM 2
D12559-2A	04/13/10	14:20 MM	04/16/10	SO	Soil	CHECK DAM 2
D12559-3	04/13/10	14:40 MM	04/16/10	SO	Soil	CHECK DAM 3
D12559-3A	04/13/10	14:40 MM	04/16/10	SO	Soil	CHECK DAM 3
D12559-4F	04/13/10	16:00 MM	04/16/10	AQ	Water Filtered	UPRIGHT TANK

---

Soil samples reported on a dry weight basis unless otherwise indicated on result page.

## CASE NARRATIVE / CONFORMANCE SUMMARY

**Client:** HRL Compliance Solutions

**Job No** D12559

**Site:** Pure Energy Release Job#10-347

**Report Dat** 4/23/2010 4:38:11 PM

On 04/16/2010, four (4) samples were received at Accutest Mountain States at a temperature of 4.0°C. The samples were intact and properly preserved, unless noted below. An Accutest Mountain States Job Number of D12559 was assigned to the project. The laboratory sample IDs, client sample IDs, and dates of sample collection are detailed in the report's Results Summary

Specified quality control criteria were achieved for this job except as noted below. For more information, please refer to the analytical results and QC summary pages.

### Volatiles by GC By Method SW846 8015B

**Matrix** SO

**Batch ID:** GGB205

- All samples were analyzed within the recommended method holding time.
- All method blanks for this batch meet method specific criteria.
- Samples D12559-1MS and D12559-1MSD were used as the QC samples indicated.

### Volatiles by GC By Method SW846 8021B

**Matrix** SO

**Batch ID:** GTA355

- All samples were analyzed within the recommended method holding time.
- Samples D12559-1MS and D12559-1MSD were used as the QC samples indicated.
- All method blanks for this batch meet method specific criteria.

### Extractables by GC By Method SW846-8015

**Matrix** SO

**Batch ID:** OP1700

- All samples were extracted within the recommended method holding time.
- All samples were analyzed within the recommended method holding time.
- All method blanks for this batch meet method specific criteria.
- OP1700-MB for Diesel Fuel (No. 2): The reporting limit was raised from 26 mg/kg to 52 mg/kg due to blank contamination.

## Metals By Method SW846 6010B

**Matrix** AQ

**Batch ID:** MP1689

- All samples were digested within the recommended method holding time.
- All samples were analyzed within the recommended method holding time.
- All method blanks for this batch meet method specific criteria.
- Samples D12463-1FMS and D12463-1FMSD were used as the QC samples for the metals analysis.

**Matrix** SO

**Batch ID:** MP1675

- All samples were digested within the recommended method holding time.
- All samples were analyzed within the recommended method holding time.
- All method blanks for this batch meet method specific criteria.
- Samples D12559-1AMS, D12559-1AMSD, and D12559-1ASDL were used as the QC samples for the metals analysis.
- The matrix spike and matrix spike duplicate (MS/MSD) recoveries of Barium, Selenium, and Zinc are outside control limits. The blank spike (BS) recoveries are of Barium, Selenium, and Zinc within QC limits, proving the analysis is in control.
- The serial dilution RPDs for Nickel, Selenium, Silver, and Zinc are outside control limits for sample MP1675-SD1. The percent differences are acceptable due to low initial sample concentrations (< 50 times IDL).

## Metals By Method SW846 6020

**Matrix** AQ

**Batch ID:** MP1690

- All samples were digested within the recommended method holding time.
- All samples were analyzed within the recommended method holding time.
- All method blanks for this batch meet method specific criteria.
- Samples D12463-1FMS and D12463-1FMSD were used as the QC samples for the metals analysis.
- D12559-4F for Arsenic: The reporting limit was raised due to dilution required for possible matrix interference.

**Matrix** SO

**Batch ID:** MP1676

- All samples were digested within the recommended method holding time.
- All samples were analyzed within the recommended method holding time.
- All method blanks for this batch meet method specific criteria.
- Samples D12559-1AMSD, D12559-1ASDL, and D12559-1AMS were used as the QC samples for the metals analysis.

## Metals By Method SW846 7471A

**Matrix** SO

**Batch ID:** MP1691

- All samples were digested within the recommended method holding time.
- All samples were analyzed within the recommended method holding time.
- All method blanks for this batch meet method specific criteria.
- Samples D12625-1MS and D12625-1MSD were used as the QC samples for the Mercury analysis.

## Wet Chemistry By Method ASTM E1498-76M

**Matrix** SO

**Batch ID:** M:GN31628

- The data for ASTM E1498-76M meets quality control requirements.
- The following samples were run outside of holding time for method ASTM E1498-76M: D12559-1A, D12559-2A, D12559-3A
- Redox Potential Vs H2: Analysis performed at Accutest Laboratories, Marlborough, MA.

### Wet Chemistry By Method SM19 2540B M

<b>Matrix</b> SO	<b>Batch ID:</b> GN3961
------------------	-------------------------

- The data for SM19 2540B M meets quality control requirements.

### Wet Chemistry By Method SW846 3060/7196A M

<b>Matrix</b> SO	<b>Batch ID:</b> R1799
------------------	------------------------

- The data for SW846 3060/7196A M meets quality control requirements.
- Trivalent Chromium: Calculated as: (Chromium) - (Hexavalent Chromium)

### Wet Chemistry By Method SW846 3060A/7196A

<b>Matrix</b> SO	<b>Batch ID:</b> M:GP11517
------------------	----------------------------

- The data for SW846 3060A/7196A meets quality control requirements.
- Hexavalent Chromium: Analysis performed at Accutest Laboratories, Marlborough, MA.

### Wet Chemistry By Method SW846 9045C

<b>Matrix</b> SO	<b>Batch ID:</b> GN3967
------------------	-------------------------

- The following samples were run outside of holding time for method SW846 9045C: D12559-1A, D12559-2A, D12559-3A

Accutest Mountain States certifies that data reported for samples received, listed on the associated custody chain or analytical task order, were produced to specifications meeting Accutest Mountain States's Quality System precision, accuracy and complete

Estimated non-standard method measurement uncertainty data is available on request, based on quality control bias and implicit for standard methods. Acceptable uncertainty requires tested parameter quality control data to meet method criteria.

Accutest Mountain States is not responsible for data quality assumptions if partial reports are used and recommends that this report be used in its entirety. Data release is authorized by Accutest Mountain States indicated via signature on the report cov

## SAMPLE DELIVERY GROUP CASE NARRATIVE

**Client:** Accutest Mountain States

**Job No** D12559

**Site:** HRLCCOGJ: Pure Energy Release Job#10-347

**Report Date** 4/21/2010 9:02:21 AM

3 Sample(s) were collected on 04/13/2010 and were received at Accutest on 04/16/2010 properly preserved, at 2.0 Deg. C and intact. These Samples received an Accutest job number of D12559. A listing of the Laboratory Sample ID, Client Sample ID and dates of collection are presented in the Results Summary Section of this report.

Except as noted below, all method specified calibrations and quality control performance criteria were met for this job. For more information, please refer to QC summary pages.

### Wet Chemistry By Method ASTM E1498-76M

**Matrix** SO

**Batch ID:** GN31628

- Sample(s) D12559-2ADUP were used as the QC samples for Redox Potential Vs H2.

### Wet Chemistry By Method SW846 3060A/7196A

**Matrix** SO

**Batch ID:** GP11517

- All samples were distilled within the recommended method holding time.
- All samples were analyzed within the recommended method holding time.
- All method blanks for this batch meet method specific criteria.
- Sample(s) D12559-1ADUP, D12559-1AMS were used as the QC samples for Chromium, Hexavalent.

The Accutest Laboratories of New England certifies that all analysis were performed within method specification. It is further recommended that this report to be used in its entirety. The Accutest Laboratories of NE, Laboratory Director or assignee as verified by the signature on the cover page has authorized the release of this report(D12559).



## Sample Results

---

## Report of Analysis

---

## Report of Analysis

3.1  
3

<b>Client Sample ID:</b> CHECK DAM 1	
<b>Lab Sample ID:</b> D12559-1	<b>Date Sampled:</b> 04/13/10
<b>Matrix:</b> SO - Soil	<b>Date Received:</b> 04/16/10
<b>Method:</b> SW846 8015B	<b>Percent Solids:</b> 89.4
<b>Project:</b> Pure Energy Release Job#10-347	

	File ID	DF	Analyzed	By	Prep Date	Prep Batch	Analytical Batch
Run #1	GB3780.D	1	04/16/10	DG	n/a	n/a	GGB205
Run #2							

	Initial Weight
Run #1	1.0 g
Run #2	

CAS No.	Compound	Result	RL	Units	Q
	TPH-GRO (C6-C10)	ND	1.1	mg/kg	
CAS No.	Surrogate Recoveries	Run# 1	Run# 2	Limits	
120-82-1	1,2,4-Trichlorobenzene	94%		60-140%	

ND = Not detected  
 RL = Reporting Limit  
 E = Indicates value exceeds calibration range

J = Indicates an estimated value  
 B = Indicates analyte found in associated method blank  
 N = Indicates presumptive evidence of a compound

# Report of Analysis

<b>Client Sample ID:</b> CHECK DAM 1	
<b>Lab Sample ID:</b> D12559-1	<b>Date Sampled:</b> 04/13/10
<b>Matrix:</b> SO - Soil	<b>Date Received:</b> 04/16/10
<b>Method:</b> SW846 8021B	<b>Percent Solids:</b> 89.4
<b>Project:</b> Pure Energy Release Job#10-347	

Run #	File ID	DF	Analyzed	By	Prep Date	Prep Batch	Analytical Batch
Run #1	TA6281.D	1	04/16/10	DG	n/a	n/a	GTA355
Run #2							

Run #	Initial Weight
Run #1	1.0 g
Run #2	

### Purgeable Aromatics

CAS No.	Compound	Result	RL	Units	Q
71-43-2	Benzene	ND	5.6	ug/kg	
108-88-3	Toluene	ND	11	ug/kg	
100-41-4	Ethylbenzene	ND	11	ug/kg	
	m,p-Xylene	ND	11	ug/kg	
95-47-6	o-Xylene	ND	11	ug/kg	

CAS No.	Surrogate Recoveries	Run# 1	Run# 2	Limits
120-82-1	1,2,4-Trichlorobenzene	113%		60-140%

ND = Not detected  
 RL = Reporting Limit  
 E = Indicates value exceeds calibration range

J = Indicates an estimated value  
 B = Indicates analyte found in associated method blank  
 N = Indicates presumptive evidence of a compound

## Report of Analysis

3.1  
3

<b>Client Sample ID:</b> CHECK DAM 1	
<b>Lab Sample ID:</b> D12559-1	<b>Date Sampled:</b> 04/13/10
<b>Matrix:</b> SO - Soil	<b>Date Received:</b> 04/16/10
<b>Method:</b> SW846-8015B SW846 3550B	<b>Percent Solids:</b> 89.4
<b>Project:</b> Pure Energy Release Job#10-347	

	File ID	DF	Analyzed	By	Prep Date	Prep Batch	Analytical Batch
Run #1	FC2482.D	1	04/16/10	CP	04/16/10	OP1700	GFC141
Run #2							

	Initial Weight	Final Volume
Run #1	30.0 g	2.0 ml
Run #2		

CAS No.	Compound	Result	RL	Units	Q
	TPH-DRO (C10-C28)	ND	15	mg/kg	
CAS No.	Surrogate Recoveries	Run# 1	Run# 2	Limits	
84-15-1	o-Terphenyl	97%		63-130%	

ND = Not detected  
 RL = Reporting Limit  
 E = Indicates value exceeds calibration range

J = Indicates an estimated value  
 B = Indicates analyte found in associated method blank  
 N = Indicates presumptive evidence of a compound

# Report of Analysis

<b>Client Sample ID:</b> CHECK DAM 1	<b>Date Sampled:</b> 04/13/10
<b>Lab Sample ID:</b> D12559-1A	<b>Date Received:</b> 04/16/10
<b>Matrix:</b> SO - Soil	<b>Percent Solids:</b> 89.4
<b>Project:</b> Pure Energy Release Job#10-347	

## Metals Analysis

Analyte	Result	RL	Units	DF	Prep	Analyzed By	Method	Prep Method
Arsenic	8.8	0.36	mg/kg	5	04/16/10	04/23/10 SES	SW846 6020 <sup>4</sup>	SW846 3050B <sup>6</sup>
Barium	760	0.89	mg/kg	1	04/16/10	04/19/10 JM	SW846 6010B <sup>1</sup>	SW846 3050B <sup>5</sup>
Cadmium	< 0.89	0.89	mg/kg	1	04/16/10	04/19/10 JM	SW846 6010B <sup>1</sup>	SW846 3050B <sup>5</sup>
Chromium	9.7	0.89	mg/kg	1	04/16/10	04/19/10 JM	SW846 6010B <sup>1</sup>	SW846 3050B <sup>5</sup>
Copper	11.2	0.45	mg/kg	1	04/20/10	04/20/10 JM	SW846 6010B <sup>2</sup>	SW846 3050B <sup>5</sup>
Lead	11.5	4.5	mg/kg	1	04/16/10	04/19/10 JM	SW846 6010B <sup>1</sup>	SW846 3050B <sup>5</sup>
Mercury	< 0.11	0.11	mg/kg	1	04/20/10	04/20/10 JM	SW846 7471A <sup>3</sup>	SW846 7471A <sup>7</sup>
Nickel	12.9	2.7	mg/kg	1	04/16/10	04/19/10 JM	SW846 6010B <sup>1</sup>	SW846 3050B <sup>5</sup>
Selenium	< 4.5	4.5	mg/kg	1	04/16/10	04/19/10 JM	SW846 6010B <sup>1</sup>	SW846 3050B <sup>5</sup>
Silver	< 2.7	2.7	mg/kg	1	04/16/10	04/19/10 JM	SW846 6010B <sup>1</sup>	SW846 3050B <sup>5</sup>
Zinc	50.9	2.7	mg/kg	1	04/16/10	04/19/10 JM	SW846 6010B <sup>1</sup>	SW846 3050B <sup>5</sup>

- (1) Instrument QC Batch: MA583
- (2) Instrument QC Batch: MA586
- (3) Instrument QC Batch: MA588
- (4) Instrument QC Batch: MA599
- (5) Prep QC Batch: MP1675
- (6) Prep QC Batch: MP1676
- (7) Prep QC Batch: MP1691

RL = Reporting Limit

## Report of Analysis

<b>Client Sample ID:</b> CHECK DAM 1	
<b>Lab Sample ID:</b> D12559-1A	<b>Date Sampled:</b> 04/13/10
<b>Matrix:</b> SO - Soil	<b>Date Received:</b> 04/16/10
	<b>Percent Solids:</b> 89.4
<b>Project:</b> Pure Energy Release Job#10-347	

### General Chemistry

Analyte	Result	RL	Units	DF	Analyzed	By	Method
Chromium, Hexavalent <sup>a</sup>	< 2.2	2.2	mg/kg	1	04/20/10 13:17	AMA	SW846 3060A/7196A
Chromium, Trivalent <sup>b</sup>	9.7	3.1	mg/kg	1	04/20/10 13:17	AMA	SW846 3060/7196A M
Redox Potential Vs H2 <sup>a</sup>	201		mv	1	04/18/10	AMA	ASTM E1498-76M
pH	8.44		su	1	04/16/10 10:35	CJ	SW846 9045C

(a) Analysis performed at Accutest Laboratories, Marlborough, MA.

(b) Calculated as: (Chromium) - (Chromium, Hexavalent)

RL = Reporting Limit

## Report of Analysis

<b>Client Sample ID:</b> CHECK DAM 2	
<b>Lab Sample ID:</b> D12559-2	<b>Date Sampled:</b> 04/13/10
<b>Matrix:</b> SO - Soil	<b>Date Received:</b> 04/16/10
<b>Method:</b> SW846 8015B	<b>Percent Solids:</b> 86.1
<b>Project:</b> Pure Energy Release Job#10-347	

	File ID	DF	Analyzed	By	Prep Date	Prep Batch	Analytical Batch
Run #1	GB3783.D	1	04/16/10	DG	n/a	n/a	GGB205
Run #2							

	Initial Weight
Run #1	1.0 g
Run #2	

CAS No.	Compound	Result	RL	Units	Q
	TPH-GRO (C6-C10)	ND	1.2	mg/kg	
CAS No.	Surrogate Recoveries	Run# 1	Run# 2	Limits	
120-82-1	1,2,4-Trichlorobenzene	104%		60-140%	

ND = Not detected  
 RL = Reporting Limit  
 E = Indicates value exceeds calibration range

J = Indicates an estimated value  
 B = Indicates analyte found in associated method blank  
 N = Indicates presumptive evidence of a compound

## Report of Analysis

<b>Client Sample ID:</b> CHECK DAM 2	
<b>Lab Sample ID:</b> D12559-2	<b>Date Sampled:</b> 04/13/10
<b>Matrix:</b> SO - Soil	<b>Date Received:</b> 04/16/10
<b>Method:</b> SW846 8021B	<b>Percent Solids:</b> 86.1
<b>Project:</b> Pure Energy Release Job#10-347	

Run #	File ID	DF	Analyzed	By	Prep Date	Prep Batch	Analytical Batch
Run #1	TA6284.D	1	04/16/10	DG	n/a	n/a	GTA355
Run #2							

Run #	Initial Weight
Run #1	1.0 g
Run #2	

**Purgeable Aromatics**

CAS No.	Compound	Result	RL	Units	Q
71-43-2	Benzene	ND	5.8	ug/kg	
108-88-3	Toluene	ND	12	ug/kg	
100-41-4	Ethylbenzene	ND	12	ug/kg	
	m,p-Xylene	ND	12	ug/kg	
95-47-6	o-Xylene	ND	12	ug/kg	

CAS No.	Surrogate Recoveries	Run# 1	Run# 2	Limits
120-82-1	1,2,4-Trichlorobenzene	111%		60-140%

ND = Not detected  
 RL = Reporting Limit  
 E = Indicates value exceeds calibration range

J = Indicates an estimated value  
 B = Indicates analyte found in associated method blank  
 N = Indicates presumptive evidence of a compound

## Report of Analysis

33

<b>Client Sample ID:</b> CHECK DAM 2	
<b>Lab Sample ID:</b> D12559-2	<b>Date Sampled:</b> 04/13/10
<b>Matrix:</b> SO - Soil	<b>Date Received:</b> 04/16/10
<b>Method:</b> SW846-8015B SW846 3550B	<b>Percent Solids:</b> 86.1
<b>Project:</b> Pure Energy Release Job#10-347	

	File ID	DF	Analyzed	By	Prep Date	Prep Batch	Analytical Batch
Run #1	FC2483.D	1	04/16/10	CP	04/16/10	OP1700	GFC141
Run #2							

	Initial Weight	Final Volume
Run #1	30.0 g	2.0 ml
Run #2		

CAS No.	Compound	Result	RL	Units	Q
	TPH-DRO (C10-C28)	ND	15	mg/kg	
CAS No.	Surrogate Recoveries	Run# 1	Run# 2	Limits	
84-15-1	o-Terphenyl	79%		63-130%	

ND = Not detected  
 RL = Reporting Limit  
 E = Indicates value exceeds calibration range

J = Indicates an estimated value  
 B = Indicates analyte found in associated method blank  
 N = Indicates presumptive evidence of a compound

# Report of Analysis

<b>Client Sample ID:</b> CHECK DAM 2	<b>Date Sampled:</b> 04/13/10
<b>Lab Sample ID:</b> D12559-2A	<b>Date Received:</b> 04/16/10
<b>Matrix:</b> SO - Soil	<b>Percent Solids:</b> 86.1
<b>Project:</b> Pure Energy Release Job#10-347	

## Metals Analysis

Analyte	Result	RL	Units	DF	Prep	Analyzed By	Method	Prep Method
Arsenic	11.0	0.38	mg/kg	5	04/16/10	04/23/10 SES	SW846 6020 <sup>4</sup>	SW846 3050B <sup>6</sup>
Barium	462	0.95	mg/kg	1	04/16/10	04/19/10 JM	SW846 6010B <sup>1</sup>	SW846 3050B <sup>5</sup>
Cadmium	< 0.95	0.95	mg/kg	1	04/16/10	04/19/10 JM	SW846 6010B <sup>1</sup>	SW846 3050B <sup>5</sup>
Chromium	9.9	0.95	mg/kg	1	04/16/10	04/19/10 JM	SW846 6010B <sup>1</sup>	SW846 3050B <sup>5</sup>
Copper	11.7	0.48	mg/kg	1	04/20/10	04/20/10 JM	SW846 6010B <sup>2</sup>	SW846 3050B <sup>5</sup>
Lead	12.8	4.8	mg/kg	1	04/16/10	04/19/10 JM	SW846 6010B <sup>1</sup>	SW846 3050B <sup>5</sup>
Mercury	< 0.11	0.11	mg/kg	1	04/20/10	04/20/10 JM	SW846 7471A <sup>3</sup>	SW846 7471A <sup>7</sup>
Nickel	13.1	2.9	mg/kg	1	04/16/10	04/19/10 JM	SW846 6010B <sup>1</sup>	SW846 3050B <sup>5</sup>
Selenium	< 4.8	4.8	mg/kg	1	04/16/10	04/19/10 JM	SW846 6010B <sup>1</sup>	SW846 3050B <sup>5</sup>
Silver	< 2.9	2.9	mg/kg	1	04/16/10	04/19/10 JM	SW846 6010B <sup>1</sup>	SW846 3050B <sup>5</sup>
Zinc	57.4	2.9	mg/kg	1	04/16/10	04/19/10 JM	SW846 6010B <sup>1</sup>	SW846 3050B <sup>5</sup>

- (1) Instrument QC Batch: MA583
- (2) Instrument QC Batch: MA586
- (3) Instrument QC Batch: MA588
- (4) Instrument QC Batch: MA599
- (5) Prep QC Batch: MP1675
- (6) Prep QC Batch: MP1676
- (7) Prep QC Batch: MP1691

RL = Reporting Limit

## Report of Analysis

<b>Client Sample ID:</b> CHECK DAM 2	
<b>Lab Sample ID:</b> D12559-2A	<b>Date Sampled:</b> 04/13/10
<b>Matrix:</b> SO - Soil	<b>Date Received:</b> 04/16/10
	<b>Percent Solids:</b> 86.1
<b>Project:</b> Pure Energy Release Job#10-347	

### General Chemistry

Analyte	Result	RL	Units	DF	Analyzed	By	Method
Chromium, Hexavalent <sup>a</sup>	< 2.3	2.3	mg/kg	1	04/20/10 13:20	AMA	SW846 3060A/7196A
Chromium, Trivalent <sup>b</sup>	9.9	3.3	mg/kg	1	04/20/10 13:20	AMA	SW846 3060/7196A M
Redox Potential Vs H2 <sup>a</sup>	197		mv	1	04/18/10	AMA	ASTM E1498-76M
pH	8.73		su	1	04/16/10 10:35	CJ	SW846 9045C

(a) Analysis performed at Accutest Laboratories, Marlborough, MA.

(b) Calculated as: (Chromium) - (Chromium, Hexavalent)

RL = Reporting Limit

## Report of Analysis

3.5  
3

<b>Client Sample ID:</b> CHECK DAM 3	
<b>Lab Sample ID:</b> D12559-3	<b>Date Sampled:</b> 04/13/10
<b>Matrix:</b> SO - Soil	<b>Date Received:</b> 04/16/10
<b>Method:</b> SW846 8015B	<b>Percent Solids:</b> 84.5
<b>Project:</b> Pure Energy Release Job#10-347	

Run #	File ID	DF	Analyzed	By	Prep Date	Prep Batch	Analytical Batch
Run #1	GB3784.D	1	04/16/10	DG	n/a	n/a	GGB205
Run #2							

Run #	Initial Weight
Run #1	1.0 g
Run #2	

CAS No.	Compound	Result	RL	Units	Q
	TPH-GRO (C6-C10)	ND	1.2	mg/kg	
CAS No.	Surrogate Recoveries	Run# 1	Run# 2	Limits	
120-82-1	1,2,4-Trichlorobenzene	82%		60-140%	

ND = Not detected  
 RL = Reporting Limit  
 E = Indicates value exceeds calibration range

J = Indicates an estimated value  
 B = Indicates analyte found in associated method blank  
 N = Indicates presumptive evidence of a compound

## Report of Analysis

3.5  
3

<b>Client Sample ID:</b> CHECK DAM 3	
<b>Lab Sample ID:</b> D12559-3	<b>Date Sampled:</b> 04/13/10
<b>Matrix:</b> SO - Soil	<b>Date Received:</b> 04/16/10
<b>Method:</b> SW846 8021B	<b>Percent Solids:</b> 84.5
<b>Project:</b> Pure Energy Release Job#10-347	

Run #	File ID	DF	Analyzed	By	Prep Date	Prep Batch	Analytical Batch
Run #1	TA6285.D	1	04/16/10	DG	n/a	n/a	GTA355
Run #2							

Run #	Initial Weight
Run #1	1.0 g
Run #2	

### Purgeable Aromatics

CAS No.	Compound	Result	RL	Units	Q
71-43-2	Benzene	ND	5.9	ug/kg	
108-88-3	Toluene	12.6	12	ug/kg	
100-41-4	Ethylbenzene	ND	12	ug/kg	
	m,p-Xylene	39.5	12	ug/kg	
95-47-6	o-Xylene	ND	12	ug/kg	

CAS No.	Surrogate Recoveries	Run# 1	Run# 2	Limits
120-82-1	1,2,4-Trichlorobenzene	126%		60-140%

ND = Not detected  
 RL = Reporting Limit  
 E = Indicates value exceeds calibration range

J = Indicates an estimated value  
 B = Indicates analyte found in associated method blank  
 N = Indicates presumptive evidence of a compound

## Report of Analysis

3.5  
3

<b>Client Sample ID:</b> CHECK DAM 3	
<b>Lab Sample ID:</b> D12559-3	<b>Date Sampled:</b> 04/13/10
<b>Matrix:</b> SO - Soil	<b>Date Received:</b> 04/16/10
<b>Method:</b> SW846-8015B SW846 3550B	<b>Percent Solids:</b> 84.5
<b>Project:</b> Pure Energy Release Job#10-347	

	File ID	DF	Analyzed	By	Prep Date	Prep Batch	Analytical Batch
Run #1	FC2484.D	1	04/16/10	CP	04/16/10	OP1700	GFC141
Run #2							

	Initial Weight	Final Volume
Run #1	30.0 g	2.0 ml
Run #2		

CAS No.	Compound	Result	RL	Units	Q
	TPH-DRO (C10-C28)	ND	16	mg/kg	
CAS No.	Surrogate Recoveries	Run# 1	Run# 2	Limits	
84-15-1	o-Terphenyl	98%		63-130%	

ND = Not detected  
 RL = Reporting Limit  
 E = Indicates value exceeds calibration range

J = Indicates an estimated value  
 B = Indicates analyte found in associated method blank  
 N = Indicates presumptive evidence of a compound

# Report of Analysis

<b>Client Sample ID:</b> CHECK DAM 3	<b>Date Sampled:</b> 04/13/10
<b>Lab Sample ID:</b> D12559-3A	<b>Date Received:</b> 04/16/10
<b>Matrix:</b> SO - Soil	<b>Percent Solids:</b> 84.5
<b>Project:</b> Pure Energy Release Job#10-347	

## Metals Analysis

Analyte	Result	RL	Units	DF	Prep	Analyzed By	Method	Prep Method
Arsenic	9.7	0.35	mg/kg	5	04/16/10	04/23/10 SES	SW846 6020 <sup>4</sup>	SW846 3050B <sup>6</sup>
Barium	637	0.88	mg/kg	1	04/16/10	04/19/10 JM	SW846 6010B <sup>1</sup>	SW846 3050B <sup>5</sup>
Cadmium	< 0.88	0.88	mg/kg	1	04/16/10	04/19/10 JM	SW846 6010B <sup>1</sup>	SW846 3050B <sup>5</sup>
Chromium	9.4	0.88	mg/kg	1	04/16/10	04/19/10 JM	SW846 6010B <sup>1</sup>	SW846 3050B <sup>5</sup>
Copper	10.3	0.44	mg/kg	1	04/20/10	04/20/10 JM	SW846 6010B <sup>2</sup>	SW846 3050B <sup>5</sup>
Lead	12.1	4.4	mg/kg	1	04/16/10	04/19/10 JM	SW846 6010B <sup>1</sup>	SW846 3050B <sup>5</sup>
Mercury	< 0.12	0.12	mg/kg	1	04/20/10	04/20/10 JM	SW846 7471A <sup>3</sup>	SW846 7471A <sup>7</sup>
Nickel	12.6	2.6	mg/kg	1	04/16/10	04/19/10 JM	SW846 6010B <sup>1</sup>	SW846 3050B <sup>5</sup>
Selenium	< 4.4	4.4	mg/kg	1	04/16/10	04/19/10 JM	SW846 6010B <sup>1</sup>	SW846 3050B <sup>5</sup>
Silver	< 2.6	2.6	mg/kg	1	04/16/10	04/19/10 JM	SW846 6010B <sup>1</sup>	SW846 3050B <sup>5</sup>
Zinc	53.5	2.6	mg/kg	1	04/16/10	04/19/10 JM	SW846 6010B <sup>1</sup>	SW846 3050B <sup>5</sup>

- (1) Instrument QC Batch: MA583
- (2) Instrument QC Batch: MA586
- (3) Instrument QC Batch: MA588
- (4) Instrument QC Batch: MA599
- (5) Prep QC Batch: MP1675
- (6) Prep QC Batch: MP1676
- (7) Prep QC Batch: MP1691

RL = Reporting Limit

## Report of Analysis

<b>Client Sample ID:</b> CHECK DAM 3	
<b>Lab Sample ID:</b> D12559-3A	<b>Date Sampled:</b> 04/13/10
<b>Matrix:</b> SO - Soil	<b>Date Received:</b> 04/16/10
	<b>Percent Solids:</b> 84.5
<b>Project:</b> Pure Energy Release Job#10-347	

### General Chemistry

Analyte	Result	RL	Units	DF	Analyzed	By	Method
Chromium, Hexavalent <sup>a</sup>	< 2.4	2.4	mg/kg	1	04/20/10 13:20	AMA	SW846 3060A/7196A
Chromium, Trivalent <sup>b</sup>	9.4	3.3	mg/kg	1	04/20/10 13:20	AMA	SW846 3060/7196A M
Redox Potential Vs H2 <sup>a</sup>	201		mv	1	04/18/10	AMA	ASTM E1498-76M
pH	7.31		su	1	04/16/10 10:35	CJ	SW846 9045C

(a) Analysis performed at Accutest Laboratories, Marlborough, MA.

(b) Calculated as: (Chromium) - (Chromium, Hexavalent)

RL = Reporting Limit

## Report of Analysis

<b>Client Sample ID:</b> UPRIGHT TANK	<b>Date Sampled:</b> 04/13/10
<b>Lab Sample ID:</b> D12559-4F	<b>Date Received:</b> 04/16/10
<b>Matrix:</b> AQ - Water Filtered	<b>Percent Solids:</b> n/a
<b>Project:</b> Pure Energy Release Job#10-347	

### Dissolved Metals Analysis

Analyte	Result	RL	Units	DF	Prep	Analyzed By	Method	Prep Method
Arsenic <sup>a</sup>	< 0.040	0.040	mg/l	50	04/20/10	04/23/10 SES	SW846 6020 <sup>3</sup>	SW846 3010A <sup>5</sup>
Barium	53800	50	ug/l	5	04/20/10	04/22/10 JM	SW846 6010B <sup>2</sup>	SW846 3010A <sup>4</sup>
Cadmium	< 10	10	ug/l	1	04/20/10	04/21/10 JM	SW846 6010B <sup>1</sup>	SW846 3010A <sup>4</sup>
Chromium	< 10	10	ug/l	1	04/20/10	04/21/10 JM	SW846 6010B <sup>1</sup>	SW846 3010A <sup>4</sup>
Copper	18.7	5.0	ug/l	1	04/20/10	04/21/10 JM	SW846 6010B <sup>1</sup>	SW846 3010A <sup>4</sup>
Lead	< 50	50	ug/l	1	04/20/10	04/21/10 JM	SW846 6010B <sup>1</sup>	SW846 3010A <sup>4</sup>
Nickel	< 30	30	ug/l	1	04/20/10	04/21/10 JM	SW846 6010B <sup>1</sup>	SW846 3010A <sup>4</sup>
Selenium	< 50	50	ug/l	1	04/20/10	04/21/10 JM	SW846 6010B <sup>1</sup>	SW846 3010A <sup>4</sup>
Silver	< 30	30	ug/l	1	04/20/10	04/21/10 JM	SW846 6010B <sup>1</sup>	SW846 3010A <sup>4</sup>
Zinc	120	30	ug/l	1	04/20/10	04/21/10 JM	SW846 6010B <sup>1</sup>	SW846 3010A <sup>4</sup>

- (1) Instrument QC Batch: MA592
- (2) Instrument QC Batch: MA593
- (3) Instrument QC Batch: MA601
- (4) Prep QC Batch: MP1689
- (5) Prep QC Batch: MP1690

(a) Elevated detection limit due to dilution required for possible matrix interference.

RL = Reporting Limit



## Misc. Forms

---

### Custody Documents and Other Forms

---

Includes the following where applicable:

- Chain of Custody



For the total dissolved Metals sample;

1. Run total dissolved metals on this sample based on the Table 910-1 Analyte suite.
2. Do not run boron
3. Run for total barium
4. I have not filtered this sample. That will need to be done at the lab.
5. Call if there are any questions.

17 Sr Highest value  
For Hex Cr. P

## D12559: Chain of Custody

Page 2 of 3



# Accutest Laboratories Sample Receipt Summary

Accutest Job Number: D12559

Client: HRL

Immediate Client Services Action Required: No

Date / Time Received: 4/16/2010 9:30:00 AM

No. Coolers: 1

Client Service Action Required at Login: No

Project: PURE ENERGY

Airbill #'s: FEDX

<u>Cooler Security</u>	<u>Y</u>	<u>or</u>	<u>N</u>		<u>Y</u>	<u>or</u>	<u>N</u>
1. Custody Seals Present:	<input checked="" type="checkbox"/>		<input type="checkbox"/>	3. COC Present:	<input checked="" type="checkbox"/>		<input type="checkbox"/>
2. Custody Seals Intact:	<input checked="" type="checkbox"/>		<input type="checkbox"/>	4. Smpl Dates/Time OK	<input checked="" type="checkbox"/>		<input type="checkbox"/>

<u>Cooler Temperature</u>	<u>Y</u>	<u>or</u>	<u>N</u>
1. Temp criteria achieved:	<input checked="" type="checkbox"/>		<input type="checkbox"/>
2. Cooler temp verification:			Infrared gun
3. Cooler media:			Ice (bag)

<u>Quality Control Preservation</u>	<u>Y</u>	<u>or</u>	<u>N</u>	<u>N/A</u>
1. Trip Blank present / cooler:	<input type="checkbox"/>		<input type="checkbox"/>	
2. Trip Blank listed on COC:	<input type="checkbox"/>		<input type="checkbox"/>	
3. Samples preserved properly:	<input checked="" type="checkbox"/>		<input type="checkbox"/>	
4. VOCs headspace free:	<input type="checkbox"/>		<input type="checkbox"/>	<input checked="" type="checkbox"/>

<u>Sample Integrity - Documentation</u>	<u>Y</u>	<u>or</u>	<u>N</u>
1. Sample labels present on bottles:	<input checked="" type="checkbox"/>		<input type="checkbox"/>
2. Container labeling complete:	<input checked="" type="checkbox"/>		<input type="checkbox"/>
3. Sample container label / COC agree:	<input checked="" type="checkbox"/>		<input type="checkbox"/>

<u>Sample Integrity - Condition</u>	<u>Y</u>	<u>or</u>	<u>N</u>
1. Sample recvd within HT:	<input checked="" type="checkbox"/>		<input type="checkbox"/>
2. All containers accounted for:	<input checked="" type="checkbox"/>		<input type="checkbox"/>
3. Condition of sample:			Intact

<u>Sample Integrity - Instructions</u>	<u>Y</u>	<u>or</u>	<u>N</u>	<u>N/A</u>
1. Analysis requested is clear:	<input checked="" type="checkbox"/>		<input type="checkbox"/>	
2. Bottles received for unspecified tests	<input type="checkbox"/>		<input checked="" type="checkbox"/>	
3. Sufficient volume rec'd for analysis:	<input checked="" type="checkbox"/>		<input type="checkbox"/>	
4. Compositing instructions clear:	<input type="checkbox"/>		<input type="checkbox"/>	<input checked="" type="checkbox"/>
5. Filtering instructions clear:	<input type="checkbox"/>		<input type="checkbox"/>	<input checked="" type="checkbox"/>

Comments

Accutest Laboratories  
V:508.481.6200

495 Technology Center West, Bldg One  
F: 508.481.7753

Marlborough, MA  
www.accutest.com

4.1  
4



## GC Volatiles

5

## QC Data Summaries

---

Includes the following where applicable:

- Method Blank Summaries
- Blank Spike Summaries
- Matrix Spike and Duplicate Summaries

## Method Blank Summary

**Job Number:** D12559  
**Account:** HRLCCOGJ HRL Compliance Solutions  
**Project:** Pure Energy Release Job#10-347

Sample	File ID	DF	Analyzed	By	Prep Date	Prep Batch	Analytical Batch
GGB205-MB	GB3778.D	1	04/16/10	DG	n/a	n/a	GGB205

The QC reported here applies to the following samples:

Method: SW846 8015B

D12559-1, D12559-2, D12559-3

CAS No.	Compound	Result	RL	MDL	Units	Q
	TPH-GRO (C6-C10)	ND	1.0	0.25	mg/kg	

CAS No.	Surrogate Recoveries	Limits
120-82-1	1,2,4-Trichlorobenzene	99% 60-140%

## Method Blank Summary

**Job Number:** D12559  
**Account:** HRLCCOGJ HRL Compliance Solutions  
**Project:** Pure Energy Release Job#10-347

Sample	File ID	DF	Analyzed	By	Prep Date	Prep Batch	Analytical Batch
GTA355-MB	TA6279.D	1	04/16/10	DG	n/a	n/a	GTA355

The QC reported here applies to the following samples:

Method: SW846 8021B

D12559-1, D12559-2, D12559-3

CAS No.	Compound	Result	RL	MDL	Units	Q
71-43-2	Benzene	ND	5.0	1.7	ug/kg	
100-41-4	Ethylbenzene	ND	10	1.8	ug/kg	
108-88-3	Toluene	ND	10	1.8	ug/kg	
95-47-6	o-Xylene	ND	10	1.6	ug/kg	
	m,p-Xylene	ND	10	1.6	ug/kg	

CAS No.	Surrogate Recoveries	Limits
120-82-1	1,2,4-Trichlorobenzene	118% 60-140%

# Blank Spike Summary

**Job Number:** D12559  
**Account:** HRLCCOGJ HRL Compliance Solutions  
**Project:** Pure Energy Release Job#10-347

Sample	File ID	DF	Analyzed	By	Prep Date	Prep Batch	Analytical Batch
GGB205-BS	GB3779.D	1	04/16/10	DG	n/a	n/a	GGB205

The QC reported here applies to the following samples:

Method: SW846 8015B

D12559-1, D12559-2, D12559-3

CAS No.	Compound	Spike mg/kg	BSP mg/kg	BSP %	Limits
	TPH-GRO (C6-C10)	11	10.4	95	70-130

CAS No.	Surrogate Recoveries	BSP	Limits
120-82-1	1,2,4-Trichlorobenzene	117%	60-140%

5.2.1  
5

# Blank Spike Summary

**Job Number:** D12559  
**Account:** HRLCCOGJ HRL Compliance Solutions  
**Project:** Pure Energy Release Job#10-347

Sample	File ID	DF	Analyzed	By	Prep Date	Prep Batch	Analytical Batch
GTA355-BS	TA6280.D	1	04/16/10	DG	n/a	n/a	GTA355

The QC reported here applies to the following samples:

Method: SW846 8021B

D12559-1, D12559-2, D12559-3

CAS No.	Compound	Spike ug/kg	BSP ug/kg	BSP %	Limits
71-43-2	Benzene	136	132	97	70-130
100-41-4	Ethylbenzene	228	223	98	70-130
108-88-3	Toluene	1060	977	92	70-130
95-47-6	o-Xylene	330	334	101	70-130
	m,p-Xylene	750	737	98	70-130

CAS No.	Surrogate Recoveries	BSP	Limits
120-82-1	1,2,4-Trichlorobenzene	131%	60-140%

# Matrix Spike/Matrix Spike Duplicate Summary

**Job Number:** D12559  
**Account:** HRLCCOGJ HRL Compliance Solutions  
**Project:** Pure Energy Release Job#10-347

Sample	File ID	DF	Analyzed	By	Prep Date	Prep Batch	Analytical Batch
D12559-1MS	GB3781.D	1	04/16/10	DG	n/a	n/a	GGB205
D12559-1MSD	GB3782.D	1	04/16/10	DG	n/a	n/a	GGB205
D12559-1	GB3780.D	1	04/16/10	DG	n/a	n/a	GGB205

The QC reported here applies to the following samples:

Method: SW846 8015B

D12559-1, D12559-2, D12559-3

CAS No.	Compound	D12559-1 mg/kg	Spike mg/kg	MS mg/kg	MS %	MSD mg/kg	MSD %	RPD	Limits Rec/RPD
	TPH-GRO (C6-C10)	ND	12.3	10.4	85	10.6	86	2	62-130/30

CAS No.	Surrogate Recoveries	MS	MSD	D12559-1	Limits
120-82-1	1,2,4-Trichlorobenzene	112%	112%	94%	60-140%

5.3.1  
5

# Matrix Spike/Matrix Spike Duplicate Summary

**Job Number:** D12559  
**Account:** HRLCCOGJ HRL Compliance Solutions  
**Project:** Pure Energy Release Job#10-347

Sample	File ID	DF	Analyzed	By	Prep Date	Prep Batch	Analytical Batch
D12559-1MS	TA6282.D	1	04/16/10	DG	n/a	n/a	GTA355
D12559-1MSD	TA6283.D	1	04/16/10	DG	n/a	n/a	GTA355
D12559-1	TA6281.D	1	04/16/10	DG	n/a	n/a	GTA355

The QC reported here applies to the following samples:

Method: SW846 8021B

D12559-1, D12559-2, D12559-3

CAS No.	Compound	D12559-1 ug/kg	Spike Q ug/kg	MS ug/kg	MS %	MSD ug/kg	MSD %	RPD	Limits Rec/RPD
71-43-2	Benzene	ND	152	135	89	148	97	9	70-130/30
100-41-4	Ethylbenzene	ND	255	217	85	245	96	12	62-130/30
108-88-3	Toluene	ND	1180	974	82	1080	91	10	70-130/30
95-47-6	o-Xylene	ND	369	325	88	358	97	10	65-135/30
	m,p-Xylene	ND	839	719	86	807	96	12	60-140/30

CAS No.	Surrogate Recoveries	MS	MSD	D12559-1	Limits
120-82-1	1,2,4-Trichlorobenzene	128%	130%	113%	60-140%

5.3.2  
5



## GC Semi-volatiles

### QC Data Summaries

Includes the following where applicable:

- Method Blank Summaries
- Blank Spike Summaries
- Matrix Spike and Duplicate Summaries

# Method Blank Summary

**Job Number:** D12559  
**Account:** HRLCCOGJ HRL Compliance Solutions  
**Project:** Pure Energy Release Job#10-347

Sample	File ID	DF	Analyzed	By	Prep Date	Prep Batch	Analytical Batch
OP1700-MB	FC2475.D	1	04/16/10	CP	04/16/10	OP1700	GFC141

The QC reported here applies to the following samples:

Method: SW846-8015

D12559-1, D12559-2, D12559-3

CAS No.	Compound	Result	RL	Units	Q
	Diesel Fuel (No. 2)	ND	13	mg/kg	

CAS No.	Surrogate Recoveries	Limits
84-15-1	o-Terphenyl	97% 63-130%

# Method Blank Summary

**Job Number:** D12559  
**Account:** HRLCCOGJ HRL Compliance Solutions  
**Project:** Pure Energy Release Job#10-347

Sample	File ID	DF	Analyzed	By	Prep Date	Prep Batch	Analytical Batch
OP1700-MB	FE2253.D	1	04/22/10	CP	04/16/10	OP1700	GFE157

The QC reported here applies to the following samples:

Method: SW846-8015

D12559-1, D12559-2, D12559-3

CAS No.	Compound	Result	RL	Units	Q
	Diesel Fuel (No. 2) <sup>a</sup>	ND	52	mg/kg	

CAS No.	Surrogate Recoveries	Limits
84-15-1	o-Terphenyl	108% 63-130%

(a) Reporting limit raised from 26mg/kg to 52mg/kg due to blank contamination.

# Blank Spike Summary

**Job Number:** D12559  
**Account:** HRLCCOGJ HRL Compliance Solutions  
**Project:** Pure Energy Release Job#10-347

Sample	File ID	DF	Analyzed	By	Prep Date	Prep Batch	Analytical Batch
OP1700-BS	FC2476.D	1	04/16/10	CP	04/16/10	OP1700	GFC141

The QC reported here applies to the following samples:

Method: SW846-8015

D12559-1, D12559-2, D12559-3

CAS No.	Compound	Spike mg/kg	BSP mg/kg	BSP %	Limits
	Diesel Fuel (No. 2)	667	600	90	70-130

CAS No.	Surrogate Recoveries	BSP	Limits
84-15-1	o-Terphenyl	91%	63-130%

# Blank Spike Summary

**Job Number:** D12559  
**Account:** HRLCCOGJ HRL Compliance Solutions  
**Project:** Pure Energy Release Job#10-347

Sample	File ID	DF	Analyzed	By	Prep Date	Prep Batch	Analytical Batch
OP1700-BS	FE2200.D	1	04/21/10	CP	04/16/10	OP1700	GFE156

The QC reported here applies to the following samples:

Method: SW846-8015

D12559-1, D12559-2, D12559-3

CAS No.	Compound	Spike mg/kg	BSP mg/kg	BSP %	Limits
	Diesel Fuel (No. 2)	667	674	101	70-130

CAS No.	Surrogate Recoveries	BSP	Limits
84-15-1	o-Terphenyl	99%	63-130%

6.2.2  
6

# Matrix Spike/Matrix Spike Duplicate Summary

**Job Number:** D12559  
**Account:** HRLCCOGJ HRL Compliance Solutions  
**Project:** Pure Energy Release Job#10-347

Sample	File ID	DF	Analyzed	By	Prep Date	Prep Batch	Analytical Batch
OP1700-MS	FC2478.D	5	04/16/10	CP	04/16/10	OP1700	GFC141
OP1700-MSD	FC2479.D	5	04/16/10	CP	04/16/10	OP1700	GFC141
D12555-1	FC2477.D	5	04/16/10	CP	04/16/10	OP1700	GFC141
D12555-1A <sup>a</sup>	FE2254.D	5	04/22/10	CP	04/16/10	OP1700	GFE157

The QC reported here applies to the following samples:

Method: SW846-8015

D12559-1, D12559-2, D12559-3

CAS No.	Compound	D12555-1 mg/kg	Spike Q	mg/kg	MS mg/kg	MS %	MSD mg/kg	MSD %	RPD	Limits Rec/RPD
	Diesel Fuel (No. 2)	ND <sup>b</sup>	745	965	76	1200	108	22	70-130/30	

CAS No.	Surrogate Recoveries	MS	MSD	D12555-1	D12555-1A	Limits
84-15-1	o-Terphenyl	106%	100%	87%	104%	63-130%

(a) Pattern is not consistent with the Diesel standard. All hydrocarbon area reported as Motor Oil.

(b) Result is from Run #2.

# Matrix Spike/Matrix Spike Duplicate Summary

**Job Number:** D12559  
**Account:** HRLCCOGJ HRL Compliance Solutions  
**Project:** Pure Energy Release Job#10-347

Sample	File ID	DF	Analyzed	By	Prep Date	Prep Batch	Analytical Batch
OP1700-MS	FC2478.D	5	04/16/10	CP	04/16/10	OP1700	GFC141
OP1700-MSD	FE2203.D	5	04/21/10	CP	04/16/10	OP1700	GFE156
D12555-1A <sup>a</sup>	FE2254.D	5	04/22/10	CP	04/16/10	OP1700	GFE157

The QC reported here applies to the following samples:

Method: SW846-8015

D12559-1, D12559-2, D12559-3

CAS No.	Compound	D12555-1A mg/kg	Spike Q mg/kg	MS mg/kg	MS %	MSD mg/kg	MSD %	RPD	Limits Rec/RPD
	Diesel Fuel (No. 2)	ND	745	965	76	1150	111	20	70-130/30

CAS No.	Surrogate Recoveries	MS	MSD	D12555-1A	Limits
84-15-1	o-Terphenyl	106%	89%	104%	63-130%

(a) Pattern is not consistent with the Diesel standard. All hydrocarbon area reported as Motor Oil.

6.3.2  
6



## Metals Analysis

### QC Data Summaries

Includes the following where applicable:

- Method Blank Summaries
- Matrix Spike and Duplicate Summaries
- Blank Spike and Lab Control Sample Summaries
- Serial Dilution Summaries

BLANK RESULTS SUMMARY  
Part 2 - Method Blanks

Login Number: D12559  
Account: HRLCCOGJ - HRL Compliance Solutions  
Project: Pure Energy Release Job#10-347

QC Batch ID: MP1675  
Matrix Type: SOLID

Methods: SW846 6010B  
Units: mg/kg

Prep Date: 04/16/10

Metal	RL	IDL	MDL	MB raw	final
Aluminum	10	3.3	2		
Antimony	3.0	1.4	.5		
Arsenic	2.5	.7	.72		
Barium	1.0	.02	.05	0.15	<1.0
Beryllium	1.0	.33	.21		
Boron	5.0	.33	.91		
Cadmium	1.0	.073	.12	0.060	<1.0
Calcium	40	.18	2.7		
Chromium	1.0	.06	.18	0.080	<1.0
Cobalt	0.50	.059	.058		
Copper	0.50	.18	.38	0.24	<0.50
Iron	7.0	.55	.91		
Lead	5.0	.33	.24	0.12	<5.0
Lithium	0.20		.09		
Magnesium	20	.061	.93		
Manganese	0.50	.01	.028		
Molybdenum	1.0	.15	.16		
Nickel	3.0	.081	.075	0.0	<3.0
Phosphorus	10	4.7	3.5		
Potassium	200	1.1	130		
Selenium	5.0	.5	.54	0.16	<5.0
Silicon	5.0	.96	.68		
Silver	3.0	.03	.068	0.0	<3.0
Sodium	40	.34	6.3		
Strontium	5.0		.02		
Thallium	1.0	.14	.21		
Tin	5.0	.26	.56		
Titanium	1.0	.013	.041		
Uranium	5.0	.43	.53		
Vanadium	1.0	.067	.034		
Zinc	3.0	.051	.49	0.50	<3.0

Associated samples MP1675: D12559-1A, D12559-2A, D12559-3A

Results < IDL are shown as zero for calculation purposes  
(\* ) Outside of QC limits

BLANK RESULTS SUMMARY  
Part 2 - Method Blanks

Login Number: D12559  
Account: HRLCCOGJ - HRL Compliance Solutions  
Project: Pure Energy Release Job#10-347

QC Batch ID: MP1675  
Matrix Type: SOLID

Methods: SW846 6010B  
Units: mg/kg

Prep Date:

Metal

(anr) Analyte not requested

7.1.1

7

MATRIX SPIKE AND DUPLICATE RESULTS SUMMARY

Login Number: D12559  
 Account: HRLCCOGJ - HRL Compliance Solutions  
 Project: Pure Energy Release Job#10-347

QC Batch ID: MP1675  
 Matrix Type: SOLID

Methods: SW846 6010B  
 Units: mg/kg

Prep Date: 04/16/10

Metal	D12559-1A Original MS		SpikeLot MPICPR1	% Rec	QC Limits
Aluminum					
Antimony					
Arsenic					
Barium	760	960	447	44.7N(a)	75-125
Beryllium					
Boron					
Cadmium	0.55	14.7	17.9	79.1	75-125
Calcium					
Chromium	9.7	154	179	80.6	75-125
Cobalt					
Copper	11.2	170	179	88.7	75-125
Iron					
Lead	11.5	151	179	77.9	75-125
Lithium					
Magnesium					
Manganese					
Molybdenum					
Nickel	12.9	151	179	77.2	75-125
Phosphorus					
Potassium					
Selenium	1.5	129	179	71.2N(a)	75-125
Silicon					
Silver	0.089	15.7	17.9	87.2	75-125
Sodium					
Strontium					
Thallium					
Tin					
Titanium					
Uranium					
Vanadium					
Zinc	50.9	182	179	73.3N(a)	75-125

Associated samples MP1675: D12559-1A, D12559-2A, D12559-3A

Results < IDL are shown as zero for calculation purposes  
 (\*) Outside of QC limits

7.1.2  
7

MATRIX SPIKE AND DUPLICATE RESULTS SUMMARY

Login Number: D12559  
Account: HRLCCOGJ - HRL Compliance Solutions  
Project: Pure Energy Release Job#10-347

QC Batch ID: MP1675  
Matrix Type: SOLID

Methods: SW846 6010B  
Units: mg/kg

Prep Date:

Metal

- (N) Matrix Spike Rec. outside of QC limits
- (anr) Analyte not requested
- (a) Spike recovery indicates possible matrix interference.

MATRIX SPIKE AND DUPLICATE RESULTS SUMMARY

Login Number: D12559  
 Account: HRLCCOGJ - HRL Compliance Solutions  
 Project: Pure Energy Release Job#10-347

QC Batch ID: MP1675  
 Matrix Type: SOLID

Methods: SW846 6010B  
 Units: mg/kg

Prep Date: 04/16/10

Metal	D12559-1A Original MSD		SpikeLot MPICPR1 % Rec		MSD RPD	QC Limit
Aluminum						
Antimony						
Arsenic						
Barium	760	1020	447	58.1N(a)	6.1	20
Beryllium						
Boron						
Cadmium	0.55	14.5	17.9	77.9	1.4	20
Calcium						
Chromium	9.7	152	179	79.5	1.3	20
Cobalt						
Copper	11.2	167	179	87.1	1.8	20
Iron						
Lead	11.5	150	179	77.4	0.7	20
Lithium						
Magnesium						
Manganese						
Molybdenum						
Nickel	12.9	149	179	76.0	1.3	20
Phosphorus						
Potassium						
Selenium	1.5	129	179	71.2N(a)	0.0	20
Silicon						
Silver	0.089	15.5	17.9	86.1	1.3	20
Sodium						
Strontium						
Thallium						
Tin						
Titanium						
Uranium						
Vanadium						
Zinc	50.9	181	179	72.7N(a)	0.6	20

Associated samples MP1675: D12559-1A, D12559-2A, D12559-3A

Results < IDL are shown as zero for calculation purposes  
 (\*) Outside of QC limits

7.1.2  
7

MATRIX SPIKE AND DUPLICATE RESULTS SUMMARY

Login Number: D12559  
Account: HRLCCOGJ - HRL Compliance Solutions  
Project: Pure Energy Release Job#10-347

QC Batch ID: MP1675  
Matrix Type: SOLID

Methods: SW846 6010B  
Units: mg/kg

Prep Date:

Metal

- (N) Matrix Spike Rec. outside of QC limits
- (anr) Analyte not requested
- (a) Spike recovery indicates possible matrix interference.

SPIKE BLANK AND LAB CONTROL SAMPLE SUMMARY

Login Number: D12559  
 Account: HRLCCOGJ - HRL Compliance Solutions  
 Project: Pure Energy Release Job#10-347

QC Batch ID: MP1675  
 Matrix Type: SOLID

Methods: SW846 6010B  
 Units: mg/kg

Prep Date: 04/16/10

Metal	BSP Result	Spikelot MPICPR1	% Rec	QC Limits
Aluminum				
Antimony				
Arsenic				
Barium	460	500	92.0	80-120
Beryllium				
Boron				
Cadmium	17.7	20	88.5	80-120
Calcium				
Chromium	187	200	93.5	80-120
Cobalt				
Copper	192	200	96.0	80-120
Iron				
Lead	183	200	91.5	80-120
Lithium				
Magnesium				
Manganese				
Molybdenum				
Nickel	184	200	92.0	80-120
Phosphorus				
Potassium				
Selenium	163	200	81.5	80-120
Silicon				
Silver	19.0	20	95.0	80-120
Sodium				
Strontium				
Thallium				
Tin				
Titanium				
Uranium				
Vanadium				
Zinc	173	200	86.5	80-120

Associated samples MP1675: D12559-1A, D12559-2A, D12559-3A

Results < IDL are shown as zero for calculation purposes  
 (\*) Outside of QC limits

7.1.3  
7

SPIKE BLANK AND LAB CONTROL SAMPLE SUMMARY

Login Number: D12559  
Account: HRLCCOGJ - HRL Compliance Solutions  
Project: Pure Energy Release Job#10-347

QC Batch ID: MP1675  
Matrix Type: SOLID

Methods: SW846 6010B  
Units: mg/kg

Prep Date:

Metal

(anr) Analyte not requested

SERIAL DILUTION RESULTS SUMMARY

Login Number: D12559  
 Account: HRLCCOGJ - HRL Compliance Solutions  
 Project: Pure Energy Release Job#10-347

QC Batch ID: MP1675  
 Matrix Type: SOLID

Methods: SW846 6010B  
 Units: ug/l

Prep Date: 04/16/10

Metal	D12559-1A Original SDL 1:5		%DIF	QC Limits
Aluminum				
Antimony				
Arsenic				
Barium	8500	9140	7.6	0-10
Beryllium				
Boron				
Cadmium	6.20	6.50	4.8	0-10
Calcium				
Chromium	108	119	9.3	0-10
Cobalt				
Copper	125	119	4.7	0-10
Iron				
Lead	129	139	7.8	0-10
Lithium				
Magnesium				
Manganese				
Molybdenum				
Nickel	144	160	11.1*(a)	0-10
Phosphorus				
Potassium				
Selenium	16.3	0.00	100.0(b)	0-10
Silicon				
Silver	1.00	5.00	400.0(b)	0-10
Sodium				
Strontium				
Thallium				
Tin				
Titanium				
Uranium				
Vanadium				
Zinc	569	645	13.4*(a)	0-10

Associated samples MP1675: D12559-1A, D12559-2A, D12559-3A

Results < IDL are shown as zero for calculation purposes  
 (\*) Outside of QC limits

7.1.4  
7

SERIAL DILUTION RESULTS SUMMARY

Login Number: D12559  
Account: HRLCCOGJ - HRL Compliance Solutions  
Project: Pure Energy Release Job#10-347

QC Batch ID: MP1675  
Matrix Type: SOLID

Methods: SW846 6010B  
Units: ug/l

Prep Date:

Metal

- (anr) Analyte not requested
- (a) Serial dilution indicates possible matrix interference.
- (b) Percent difference acceptable due to low initial sample concentration (< 50 times IDL).

BLANK RESULTS SUMMARY  
Part 2 - Method Blanks

Login Number: D12559  
Account: HRLCCOGJ - HRL Compliance Solutions  
Project: Pure Energy Release Job#10-347

QC Batch ID: MP1676  
Matrix Type: SOLID

Methods: SW846 6020  
Units: mg/kg

Prep Date: 04/16/10

Metal	RL	IDL	MDL	MB raw	final
Aluminum	25	.24	.89		
Arsenic	0.40	.058	.26	0.0038	<0.40
Calcium	200	2.6	6.1		
Copper	1.0	.0045	.14		
Iron	20	2.1	6.1		
Lead	0.25	.0013	.18		
Magnesium	50	.096	1.3		
Potassium	100	4.3	9.1		
Selenium	0.20	.072	.14		
Sodium	250	.25	1.8		
Uranium	0.25	.0005	.12		

Associated samples MP1676: D12559-1A, D12559-2A, D12559-3A

Results < IDL are shown as zero for calculation purposes  
(\* ) Outside of QC limits  
(anr) Analyte not requested

7.2.1  
7

MATRIX SPIKE AND DUPLICATE RESULTS SUMMARY

Login Number: D12559  
 Account: HRLCCOGJ - HRL Compliance Solutions  
 Project: Pure Energy Release Job#10-347

QC Batch ID: MP1676  
 Matrix Type: SOLID

Methods: SW846 6020  
 Units: mg/kg

Prep Date: 04/16/10

Metal	D12559-1A Original MS		SpikeLot MPICPR1	% Rec	QC Limits
Aluminum					
Arsenic	8.8	184	179	97.9	60-119
Calcium					
Copper					
Iron					
Lead					
Magnesium					
Potassium					
Selenium					
Sodium					
Uranium					

Associated samples MP1676: D12559-1A, D12559-2A, D12559-3A

Results < IDL are shown as zero for calculation purposes  
 (\*) Outside of QC limits  
 (N) Matrix Spike Rec. outside of QC limits  
 (anr) Analyte not requested

7.2.2  
7

MATRIX SPIKE AND DUPLICATE RESULTS SUMMARY

Login Number: D12559  
 Account: HRLCCOGJ - HRL Compliance Solutions  
 Project: Pure Energy Release Job#10-347

QC Batch ID: MP1676  
 Matrix Type: SOLID

Methods: SW846 6020  
 Units: mg/kg

Prep Date: 04/16/10

Metal	D12559-1A Original MSD		Spike/lot MPICPR1 % Rec		MSD RPD	QC Limit
Aluminum						
Arsenic	8.8	178	179	94.5	3.3	20
Calcium						
Copper						
Iron						
Lead						
Magnesium						
Potassium						
Selenium						
Sodium						
Uranium						

Associated samples MP1676: D12559-1A, D12559-2A, D12559-3A

Results < IDL are shown as zero for calculation purposes

(\*) Outside of QC limits

(N) Matrix Spike Rec. outside of QC limits

(anr) Analyte not requested

7.2.2  
7

SPIKE BLANK AND LAB CONTROL SAMPLE SUMMARY

Login Number: D12559  
 Account: HRLCCOGJ - HRL Compliance Solutions  
 Project: Pure Energy Release Job#10-347

QC Batch ID: MP1676  
 Matrix Type: SOLID

Methods: SW846 6020  
 Units: mg/kg

Prep Date: 04/16/10

Metal	BSP Result	Spikelot MPICPR1	% Rec	QC Limits
Aluminum				
Arsenic	182	200	91.0	80-120
Calcium				
Copper				
Iron				
Lead				
Magnesium				
Potassium				
Selenium				
Sodium				
Uranium				

Associated samples MP1676: D12559-1A, D12559-2A, D12559-3A

Results < IDL are shown as zero for calculation purposes  
 (\*) Outside of QC limits  
 (anr) Analyte not requested

7.2.3  
7

SERIAL DILUTION RESULTS SUMMARY

Login Number: D12559  
 Account: HRLCCOGJ - HRL Compliance Solutions  
 Project: Pure Energy Release Job#10-347

QC Batch ID: MP1676  
 Matrix Type: SOLID

Methods: SW846 6020  
 Units: ug/l

Prep Date: 04/16/10

Metal	D12559-1A		QC	
	Original	SDL 5:25	%DIF	Limits
Aluminum				
Arsenic	98.7	98.7	0.0	0-10
Calcium				
Copper				
Iron				
Lead				
Magnesium				
Potassium				
Selenium				
Sodium				
Uranium				

Associated samples MP1676: D12559-1A, D12559-2A, D12559-3A

Results < IDL are shown as zero for calculation purposes  
 (\*) Outside of QC limits  
 (anr) Analyte not requested

7.2.4  
 7

BLANK RESULTS SUMMARY  
Part 2 - Method Blanks

Login Number: D12559  
Account: HRLCCOGJ - HRL Compliance Solutions  
Project: Pure Energy Release Job#10-347

QC Batch ID: MP1689  
Matrix Type: AQUEOUS

Methods: SW846 6010B  
Units: ug/l

Prep Date: 04/20/10

Metal	RL	IDL	MDL	MB raw	final
Aluminum	100	33	49		
Antimony	30	14	13		
Arsenic	25	7	6.5		
Barium	10	.2	2.4	0.90	<10
Beryllium	10	3.3	4.4		
Boron	50	3.3	19		
Cadmium	10	.73	1.2	-1.5	<10
Calcium	400	1.8	9.2		
Chromium	10	.6	1.6	0.30	<10
Cobalt	5.0	.59	.3		
Copper	5.0	1.8	2.7	-0.70	<5.0
Iron	70	5.5	10		
Lead	50	3.3	3.2	2.3	<50
Lithium	2.0		1.6		
Magnesium	200	.61	12		
Manganese	5.0	.1	.7		
Molybdenum	10	1.5	1.2		
Nickel	30	.81	.6	0.90	<30
Phosphorus	100	47	54		
Potassium	1000	11	540		
Selenium	50	5	7.2	-1.3	<50
Silicon	50	9.6	20		
Silver	30	.3	.3	-1.0	<30
Sodium	400	3.4	23		
Strontium	5.0		3.4		
Thallium	10	1.4	2.1		
Tin	50	2.6	4.4		
Titanium	10	.13	.7		
Uranium	50	4.3	3.9		
Vanadium	10	.67	.3		
Zinc	30	.51	1.7	3.0	<30

Associated samples MP1689: D12559-4F

Results < IDL are shown as zero for calculation purposes  
(\* ) Outside of QC limits

BLANK RESULTS SUMMARY  
Part 2 - Method Blanks

Login Number: D12559  
Account: HRLCCOGJ - HRL Compliance Solutions  
Project: Pure Energy Release Job#10-347

QC Batch ID: MP1689  
Matrix Type: AQUEOUS

Methods: SW846 6010B  
Units: ug/l

Prep Date:

Metal

(anr) Analyte not requested

7.3.1

7

MATRIX SPIKE AND DUPLICATE RESULTS SUMMARY

Login Number: D12559  
 Account: HRLCCOGJ - HRL Compliance Solutions  
 Project: Pure Energy Release Job#10-347

QC Batch ID: MP1689  
 Matrix Type: AQUEOUS

Methods: SW846 6010B  
 Units: ug/l

Prep Date: 04/20/10

Metal	D12463-1F Original MS		SpikeLot MPICPR1	% Rec	QC Limits
Aluminum					
Antimony					
Arsenic	anr				
Barium	15.8	5340	5560	95.8	75-125
Beryllium					
Boron					
Cadmium	0.0	223	222	100.4	75-125
Calcium	anr				
Chromium	0.80	2290	2220	103.0	75-125
Cobalt					
Copper	6.5	2300	2220	103.2	75-125
Iron	anr				
Lead	0.0	2320	2220	104.4	75-125
Lithium					
Magnesium	anr				
Manganese	anr				
Molybdenum					
Nickel	1.2	2310	2220	103.9	75-125
Phosphorus					
Potassium	anr				
Selenium	0.0	2150	2220	96.8	75-125
Silicon					
Silver	0.0	239	222	107.6	75-125
Sodium	anr				
Strontium					
Thallium					
Tin					
Titanium					
Uranium					
Vanadium					
Zinc	24.0	2460	2220	109.6	75-125

Associated samples MP1689: D12559-4F

Results < IDL are shown as zero for calculation purposes  
 (\*) Outside of QC limits

7.3.2  
7

MATRIX SPIKE AND DUPLICATE RESULTS SUMMARY

Login Number: D12559  
Account: HRLCCOGJ - HRL Compliance Solutions  
Project: Pure Energy Release Job#10-347

QC Batch ID: MP1689  
Matrix Type: AQUEOUS

Methods: SW846 6010B  
Units: ug/l

Prep Date:

Metal

(N) Matrix Spike Rec. outside of QC limits  
(anr) Analyte not requested

MATRIX SPIKE AND DUPLICATE RESULTS SUMMARY

Login Number: D12559  
 Account: HRLCCOGJ - HRL Compliance Solutions  
 Project: Pure Energy Release Job#10-347

QC Batch ID: MP1689  
 Matrix Type: AQUEOUS

Methods: SW846 6010B  
 Units: ug/l

Prep Date: 04/20/10

Metal	D12463-1F Original MSD	SpikeLot MPICPR1	% Rec	MSD RPD	QC Limit	
Aluminum						
Antimony						
Arsenic	anr					
Barium	15.8	5250	5560	94.2	1.7	20
Beryllium						
Boron						
Cadmium	0.0	217	222	97.7	2.7	20
Calcium	anr					
Chromium	0.80	2250	2220	101.2	1.8	20
Cobalt						
Copper	6.5	2240	2220	100.5	2.6	20
Iron	anr					
Lead	0.0	2260	2220	101.7	2.6	20
Lithium						
Magnesium	anr					
Manganese	anr					
Molybdenum						
Nickel	1.2	2270	2220	102.1	1.7	20
Phosphorus						
Potassium	anr					
Selenium	0.0	2110	2220	95.0	1.9	20
Silicon						
Silver	0.0	236	222	106.2	1.3	20
Sodium	anr					
Strontium						
Thallium						
Tin						
Titanium						
Uranium						
Vanadium						
Zinc	24.0	2420	2220	107.8	1.6	20

Associated samples MP1689: D12559-4F

Results < IDL are shown as zero for calculation purposes  
 (\*) Outside of QC limits

7.3.2  
7

MATRIX SPIKE AND DUPLICATE RESULTS SUMMARY

Login Number: D12559  
Account: HRLCCOGJ - HRL Compliance Solutions  
Project: Pure Energy Release Job#10-347

QC Batch ID: MP1689  
Matrix Type: AQUEOUS

Methods: SW846 6010B  
Units: ug/l

Prep Date:

Metal

(N) Matrix Spike Rec. outside of QC limits  
(anr) Analyte not requested

SPIKE BLANK AND LAB CONTROL SAMPLE SUMMARY

Login Number: D12559  
 Account: HRLCCOGJ - HRL Compliance Solutions  
 Project: Pure Energy Release Job#10-347

QC Batch ID: MP1689  
 Matrix Type: AQUEOUS

Methods: SW846 6010B  
 Units: ug/l

Prep Date: 04/20/10

Metal	BSP Result	Spikelot MPICPR1	% Rec	QC Limits
Aluminum				
Antimony				
Arsenic	anr			
Barium	4770	5000	95.4	80-120
Beryllium				
Boron				
Cadmium	188	200	94.0	80-120
Calcium	anr			
Chromium	2020	2000	101.0	80-120
Cobalt				
Copper	1930	2000	96.5	80-120
Iron	anr			
Lead	2020	2000	101.0	80-120
Lithium				
Magnesium	anr			
Manganese	anr			
Molybdenum				
Nickel	2000	2000	100.0	80-120
Phosphorus				
Potassium	anr			
Selenium	1790	2000	89.5	80-120
Silicon				
Silver	212	200	106.0	80-120
Sodium	anr			
Strontium				
Thallium				
Tin				
Titanium				
Uranium				
Vanadium				
Zinc	1990	2000	99.5	80-120

Associated samples MP1689: D12559-4F

Results < IDL are shown as zero for calculation purposes  
 (\*) Outside of QC limits

7.3.3  
7

SPIKE BLANK AND LAB CONTROL SAMPLE SUMMARY

Login Number: D12559  
Account: HRLCCOGJ - HRL Compliance Solutions  
Project: Pure Energy Release Job#10-347

QC Batch ID: MP1689  
Matrix Type: AQUEOUS

Methods: SW846 6010B  
Units: ug/l

Prep Date:

Metal

(anr) Analyte not requested

BLANK RESULTS SUMMARY  
Part 2 - Method Blanks

Login Number: D12559  
Account: HRLCCOGJ - HRL Compliance Solutions  
Project: Pure Energy Release Job#10-347

QC Batch ID: MP1690  
Matrix Type: AQUEOUS

Methods: SW846 6020  
Units: mg/l

Prep Date: 04/20/10

Metal	RL	IDL	MDL	MB	
				raw	final
Aluminum	0.25	.0024	.0079		
Arsenic	0.0040	.00058	.00089	-0.00016	<0.0040
Calcium	2.0	.026	.035		
Copper	0.010	.000045	.0007		
Iron	0.20	.021	.031		
Lead	0.0025	.000013	.000017		
Magnesium	0.50	.00096	.003		
Potassium	1.0	.043			
Sodium	2.5	.0025	.027		
Uranium	0.0010	.000005	.000021		

Associated samples MP1690: D12559-4F

Results < IDL are shown as zero for calculation purposes  
(\* ) Outside of QC limits  
(anr) Analyte not requested

7.4.1  
7

MATRIX SPIKE AND DUPLICATE RESULTS SUMMARY

Login Number: D12559  
 Account: HRLCCOGJ - HRL Compliance Solutions  
 Project: Pure Energy Release Job#10-347

QC Batch ID: MP1690  
 Matrix Type: AQUEOUS

Methods: SW846 6020  
 Units: mg/l

Prep Date: 04/20/10

Metal	D12463-1F Original MS		SpikeLot MPMSR3	% Rec	QC Limits
Aluminum					
Arsenic	0.0023	0.068	0.056	118.3	75-125
Calcium					
Copper					
Iron					
Lead					
Magnesium					
Potassium					
Sodium					
Uranium					

Associated samples MP1690: D12559-4F

Results < IDL are shown as zero for calculation purposes  
 (\*) Outside of QC limits  
 (N) Matrix Spike Rec. outside of QC limits  
 (anr) Analyte not requested

7.4.2  
7

MATRIX SPIKE AND DUPLICATE RESULTS SUMMARY

Login Number: D12559  
 Account: HRLCCOGJ - HRL Compliance Solutions  
 Project: Pure Energy Release Job#10-347

QC Batch ID: MP1690  
 Matrix Type: AQUEOUS

Methods: SW846 6020  
 Units: mg/l

Prep Date: 04/20/10

Metal	D12463-1F Original MSD		Spike/lot MPMSR3 % Rec		MSD RPD	QC Limit
Aluminum						
Arsenic	0.0023	0.070	0.056	121.9	2.9	20
Calcium						
Copper						
Iron						
Lead						
Magnesium						
Potassium						
Sodium						
Uranium						

Associated samples MP1690: D12559-4F

Results < IDL are shown as zero for calculation purposes  
 (\*) Outside of QC limits  
 (N) Matrix Spike Rec. outside of QC limits  
 (anr) Analyte not requested

7.4.2  
7

SPIKE BLANK AND LAB CONTROL SAMPLE SUMMARY

Login Number: D12559  
 Account: HRLCCOGJ - HRL Compliance Solutions  
 Project: Pure Energy Release Job#10-347

QC Batch ID: MP1690  
 Matrix Type: AQUEOUS

Methods: SW846 6020  
 Units: mg/l

Prep Date: 04/20/10

Metal	BSP Result	SpikeLot MPMSR3	% Rec	QC Limits
Aluminum				
Arsenic	0.058	0.050	116.0	80-120
Calcium				
Copper				
Iron				
Lead				
Magnesium				
Potassium				
Sodium				
Uranium				

Associated samples MP1690: D12559-4F

Results < IDL are shown as zero for calculation purposes  
 (\*) Outside of QC limits  
 (anr) Analyte not requested

7.4.3  
7

BLANK RESULTS SUMMARY  
Part 2 - Method Blanks

Login Number: D12559  
Account: HRLCCOGJ - HRL Compliance Solutions  
Project: Pure Energy Release Job#10-347

QC Batch ID: MP1691  
Matrix Type: SOLID

Methods: SW846 7471A  
Units: mg/kg

Prep Date: 04/20/10

Metal	RL	IDL	MDL	MB	
				raw	final
Mercury	0.10	.0011	.0012	-0.0029	<0.10

Associated samples MP1691: D12559-1A, D12559-2A, D12559-3A

Results < IDL are shown as zero for calculation purposes  
(\* ) Outside of QC limits  
(anr) Analyte not requested

7.5.1

7

MATRIX SPIKE AND DUPLICATE RESULTS SUMMARY

Login Number: D12559  
Account: HRLCCOGJ - HRL Compliance Solutions  
Project: Pure Energy Release Job#10-347

QC Batch ID: MP1691  
Matrix Type: SOLID

Methods: SW846 7471A  
Units: mg/kg

Prep Date: 04/20/10

Metal	D12625-1 Original MS	Spike HGWSR1	lot % Rec	QC Limits
Mercury	0.042	0.47	0.429 99.8	85-115

Associated samples MP1691: D12559-1A, D12559-2A, D12559-3A

Results < IDL are shown as zero for calculation purposes  
(\* ) Outside of QC limits  
(N) Matrix Spike Rec. outside of QC limits  
(anr) Analyte not requested

MATRIX SPIKE AND DUPLICATE RESULTS SUMMARY

Login Number: D12559  
 Account: HRLCCOGJ - HRL Compliance Solutions  
 Project: Pure Energy Release Job#10-347

QC Batch ID: MP1691  
 Matrix Type: SOLID

Methods: SW846 7471A  
 Units: mg/kg

Prep Date: 04/20/10

Metal	D12625-1 Original MSD	Spikelot HGWSR1	% Rec	MSD RPD	QC Limit
Mercury	0.042	0.45	0.42	97.1	4.3 20

Associated samples MP1691: D12559-1A, D12559-2A, D12559-3A

Results < IDL are shown as zero for calculation purposes

(\*) Outside of QC limits

(N) Matrix Spike Rec. outside of QC limits

(anr) Analyte not requested

7.5.2  
7

SPIKE BLANK AND LAB CONTROL SAMPLE SUMMARY

Login Number: D12559  
Account: HRLCCOGJ - HRL Compliance Solutions  
Project: Pure Energy Release Job#10-347

QC Batch ID: MP1691  
Matrix Type: SOLID

Methods: SW846 7471A  
Units: mg/kg

Prep Date: 04/20/10

Metal	BSP Result	Spikelot HGWSR1	% Rec	QC Limits
-------	---------------	--------------------	-------	--------------

Mercury 0.41 0.4 102.5 80-120

Associated samples MP1691: D12559-1A, D12559-2A, D12559-3A

Results < IDL are shown as zero for calculation purposes  
(\* ) Outside of QC limits  
(anr) Analyte not requested



## General Chemistry

### QC Data Summaries

---

Includes the following where applicable:

- Method Blank and Blank Spike Summaries
- Duplicate Summaries
- Matrix Spike Summaries

METHOD BLANK AND SPIKE RESULTS SUMMARY  
GENERAL CHEMISTRY

Login Number: D12559  
Account: HRLCCOGJ - HRL Compliance Solutions  
Project: Pure Energy Release Job#10-347

Analyte	Batch ID	RL	MB Result	Units	Spike Amount	BSP Result	BSP %Recov	QC Limits
pH	GN3967			su	8.00	7.98	99.8	99.3-100.7%

Associated Samples:

Batch GN3967: D12559-1A, D12559-2A, D12559-3A

(\*) Outside of QC limits

8.1

8



## Misc. Forms

---

### Custody Documents and Other Forms

(Accutest Labs of New England, Inc.)

---

Includes the following where applicable:

- Chain of Custody



CHAIN OF CUSTODY

4036 Youngfield St., Wheat Ridge, CO 80033  
303-425-6021 FAX: 303-425-6854

Accutest Job #: D12559  
Accutest Quote #:  
AMS P.O. #:  
Project No.:

Client Information			Subcontract Laboratory Information						Analytical Information					
Name Accutest Mountain States (AMS)			Name Accutest - New England											
Address 4036 Youngfield St.			Address 495 Technology Center West, BLDG C											
City Wheat Ridge,	State CO	Zip 80033	City Marlborough	State MA	Zip 01752									
Send Report to: Any questions contact: Tiffany Pham Shea Greiner			Contact: Sample Management											
Phone/Fax #: (303) 425-6021; (303) 425-6854			Phone: (508) 481-6200											
Field ID / Point of Collection		Collection		Matrix	# of bottles	Preservation					XCRA	H	I	Comments
Date	Time					HCL	NaOH	HNO3	H2SO4	None				
D12559 -1A	4/13/10	2:00 PM		Soil	1						X	X		
-2A	4/13/10	2:20 PM		Soil	1						X	X		
-3A	4/13/10	2:40 PM		Soil	1						X	X		
-														
-														
-														
-														
-														
-														
-														
Turnaround Information			Data Deliverable Information						Comments / Remarks					
<input checked="" type="checkbox"/> 3-5 Business Day Rush <input type="checkbox"/> Other _____ (Days) <b>RUSH!</b> 10 Day Turnaround Hardcopy, RUSH is FAX Data unless previously approved.			Approved By: _____ <input type="checkbox"/> Commercial "A" <input type="checkbox"/> PDF <input checked="" type="checkbox"/> Commercial "B" <input type="checkbox"/> Compact Disk Deliverable <input type="checkbox"/> Reduced Tier 1 <input type="checkbox"/> Electronic Delivery: <input type="checkbox"/> Full Tier 1 <input type="checkbox"/> State Forms <input type="checkbox"/> Other (Specify) _____						Please use Colorado regulations and RLs.  20					
Sample Custody must be documented below each time samples change possession, including courier delivery.										For Subcontract Laboratory Use Only				
Relinquished by:	Date & Time:	Received By:	Date & Time:	Seal #:	Headspace:									
1	4/16/10	1	1		Yes <input type="checkbox"/> No <input type="checkbox"/> NA <input type="checkbox"/>									
Relinquished by:	Date & Time:	Received By:	Date & Time:	Preserved where applicable:										
2	4/17/10 8:40	2	2	<input type="checkbox"/>										
Relinquished by:	Date & Time:	Received By:	Date & Time:	Temperature °C			On Ice <input checked="" type="checkbox"/>							
3		3	3	20°C										

9.1  
9

D12559: Chain of Custody  
Page 1 of 2  
Accutest Labs of New England, Inc.



# Accutest Laboratories Sample Receipt Summary

Accutest Job Number: D12559

Client: AMS(ACCUT,CO)

Immediate Client Services Action Required: No

Date / Time Received: 4/17/2010 8:40:00 AM

No. Coolers: 1

Client Service Action Required at Login: No

Project: SUB TO ALNE

Airbill #'s: 1Z8X06264143901091

<u>Cooler Security</u>	<u>Y</u>	<u>or</u>	<u>N</u>		<u>Y</u>	<u>or</u>	<u>N</u>
1. Custody Seals Present:	<input checked="" type="checkbox"/>		<input type="checkbox"/>	3. COC Present:	<input checked="" type="checkbox"/>		<input type="checkbox"/>
2. Custody Seals Intact:	<input checked="" type="checkbox"/>		<input type="checkbox"/>	4. Smpl Dates/Time OK	<input checked="" type="checkbox"/>		<input type="checkbox"/>

<u>Cooler Temperature</u>	<u>Y</u>	<u>or</u>	<u>N</u>
1. Temp criteria achieved:	<input checked="" type="checkbox"/>		<input type="checkbox"/>
2. Cooler temp verification:			Infrared gun
3. Cooler media:			Ice (bag)

<u>Quality Control Preservation</u>	<u>Y</u>	<u>or</u>	<u>N</u>	<u>N/A</u>
1. Trip Blank present / cooler:	<input type="checkbox"/>		<input type="checkbox"/>	
2. Trip Blank listed on COC:	<input type="checkbox"/>		<input type="checkbox"/>	
3. Samples preserved property:	<input checked="" type="checkbox"/>		<input type="checkbox"/>	
4. VOCs headspace free:	<input type="checkbox"/>		<input type="checkbox"/>	<input checked="" type="checkbox"/>

<u>Sample Integrity - Documentation</u>	<u>Y</u>	<u>or</u>	<u>N</u>
1. Sample labels present on bottles:	<input checked="" type="checkbox"/>		<input type="checkbox"/>
2. Container labeling complete:	<input checked="" type="checkbox"/>		<input type="checkbox"/>
3. Sample container label / COC agree:	<input checked="" type="checkbox"/>		<input type="checkbox"/>

<u>Sample Integrity - Condition</u>	<u>Y</u>	<u>or</u>	<u>N</u>
1. Sample recvd within HT:	<input checked="" type="checkbox"/>		<input type="checkbox"/>
2. All containers accounted for:	<input checked="" type="checkbox"/>		<input type="checkbox"/>
3. Condition of sample:			Intact

<u>Sample Integrity - Instructions</u>	<u>Y</u>	<u>or</u>	<u>N</u>	<u>N/A</u>
1. Analysis requested is clear:	<input checked="" type="checkbox"/>		<input type="checkbox"/>	
2. Bottles received for unspecified tests	<input type="checkbox"/>		<input checked="" type="checkbox"/>	
3. Sufficient volume rec'd for analysis:	<input checked="" type="checkbox"/>		<input type="checkbox"/>	
4. Compositing instructions clear:	<input type="checkbox"/>		<input type="checkbox"/>	<input checked="" type="checkbox"/>
5. Filtering instructions clear:	<input type="checkbox"/>		<input type="checkbox"/>	<input checked="" type="checkbox"/>

Comments

Accutest Laboratories  
V:508.481.6200

495 Technology Center West, Bldg One  
F: 508.481.7753

Marlborough, MA  
www.accutest.com

9.1  
9



## General Chemistry

### QC Data Summaries

(Accutest Labs of New England, Inc.)

---

Includes the following where applicable:

- Method Blank and Blank Spike Summaries
- Duplicate Summaries
- Matrix Spike Summaries

METHOD BLANK AND SPIKE RESULTS SUMMARY  
GENERAL CHEMISTRY

Login Number: D12559  
Account: ALMS - Accutest Mountain States  
Project: HRLCCOGJ: Pure Energy Release Job#10-347

Analyte	Batch ID	RL	MB Result	Units	Spike Amount	BSP Result	BSP %Recov	QC Limits
Chromium, Hexavalent	GP11517/GN31643	2.0	0.0	mg/kg	40	41.8	104.5	80-120%
Chromium, Hexavalent	GP11517/GN31643			mg/kg	902	947	105.0	80-120%

Associated Samples:

Batch GP11517: D12559-1A, D12559-2A, D12559-3A

(\*) Outside of QC limits

10.1  
10

DUPLICATE RESULTS SUMMARY  
GENERAL CHEMISTRY

Login Number: D12559  
Account: ALMS - Accutest Mountain States  
Project: HRLCCOGJ: Pure Energy Release Job#10-347

Analyte	Batch ID	QC Sample	Units	Original Result	DUP Result	RPD	QC Limits
Chromium, Hexavalent	GP11517/GN31643	D12559-1A	mg/kg	0.0	0.0	0.0	0-20%
Redox Potential Vs H2	GN31628	D12559-2A	mv	197	190	3.6	0-20%

Associated Samples:

Batch GN31628: D12559-1A, D12559-2A, D12559-3A

Batch GP11517: D12559-1A, D12559-2A, D12559-3A

(\*) Outside of QC limits

10.2  
10

MATRIX SPIKE RESULTS SUMMARY  
GENERAL CHEMISTRY

Login Number: D12559  
Account: ALMS - Accutest Mountain States  
Project: HRLCCOGJ: Pure Energy Release Job#10-347

Analyte	Batch ID	QC Sample	Units	Original Result	Spike Amount	MS Result	%Rec	QC Limits
Chromium, Hexavalent	GP11517/GN31643	D12559-1A	mg/kg	0.0	44.6	44.4	99.6	75-125%
Chromium, Hexavalent	GP11517/GN31643	D12559-1A	mg/kg	0.0	972	1030	106.0	75-125%

Associated Samples:

Batch GP11517: D12559-1A, D12559-2A, D12559-3A

(\*) Outside of QC limits

(N) Matrix Spike Rec. outside of QC limits

10.3  
10



Technical Report for

HRL Compliance Solutions

Pure Energy Release Job#10-347

Accutest Job Number: D12516

Sampling Date: 04/14/10

Report to:

HRL Compliance Solutions  
744 Horizon Court Suite 140  
Grand Junction, CO 81506  
mmumby@hrlcomp.com; krowe@hrlcomp.com

ATTN: Mark Mumby

Total number of pages in report: **47**



Test results contained within this data package meet the requirements of the National Environmental Laboratory Accreditation Conference and/or state specific certification programs as applicable.

Jesse L. Smith  
Laboratory Director

Client Service contact: Shea Greiner 303-425-6021

Certifications: CO, ID, NE, NM, ND (R-027) (PW) UT (NELAP CO00049)

This report shall not be reproduced, except in its entirety, without the written approval of Accutest Laboratories.  
Test results relate only to samples analyzed.



April 21, 2010

Mark Mumby  
HRL Compliance Solutions  
744 Horizon Court Suite 140  
Grand Junction, CO 81506

Reference: Accutest Job D12516 (Revision 1)

Dear Mark Mumby:

The final report for Accutest job number D12516 has been revised to remove the MDL from the report and report results to the Reporting Limit (RL) for the 8021B and 8015B analysis. The results reported did not change.

Sincerely,



Tiffany Pham  
Quality Assurance  
Accutest Mountain States

# Table of Contents

-1-

<b>Section 1: Sample Summary .....</b>	<b>4</b>
<b>Section 2: Case Narrative/Conformance Summary .....</b>	<b>5</b>
<b>Section 3: Sample Results .....</b>	<b>7</b>
<b>3.1: D12516-1: COTTONWOOD GULCH UG .....</b>	<b>8</b>
<b>3.2: D12516-2: COTTONWOOD GULCH CONFLUENCE .....</b>	<b>10</b>
<b>3.3: D12516-3: COTTONWOOD GULCH DG1 .....</b>	<b>12</b>
<b>3.4: D12516-4: COTTONWOOD GULCH DG2 .....</b>	<b>14</b>
<b>3.5: D12516-5: COTTONWOOD GULCH RIVER .....</b>	<b>16</b>
<b>3.6: D12516-6: PAD .....</b>	<b>18</b>
<b>3.7: D12516-7: ACCESS ROAD .....</b>	<b>22</b>
<b>Section 4: Misc. Forms .....</b>	<b>26</b>
<b>4.1: Chain of Custody .....</b>	<b>27</b>
<b>Section 5: GC Volatiles - QC Data Summaries .....</b>	<b>29</b>
<b>5.1: Method Blank Summary .....</b>	<b>30</b>
<b>5.2: Blank Spike Summary .....</b>	<b>33</b>
<b>5.3: Matrix Spike/Matrix Spike Duplicate Summary .....</b>	<b>36</b>
<b>Section 6: GC Semi-volatiles - QC Data Summaries .....</b>	<b>39</b>
<b>6.1: Method Blank Summary .....</b>	<b>40</b>
<b>6.2: Blank Spike Summary .....</b>	<b>41</b>
<b>6.3: Matrix Spike/Matrix Spike Duplicate Summary .....</b>	<b>42</b>
<b>Section 7: General Chemistry - QC Data Summaries .....</b>	<b>43</b>
<b>7.1: Method Blank and Spike Results Summary .....</b>	<b>44</b>
<b>7.2: Duplicate Results Summary .....</b>	<b>45</b>
<b>7.3: Matrix Spike Results Summary .....</b>	<b>46</b>
<b>7.4: Matrix Spike Duplicate Results Summary .....</b>	<b>47</b>

1

2

3

4

5

6

7



## Sample Summary

HRL Compliance Solutions

**Job No:** D12516

Pure Energy Release Job#10-347

Sample Number	Collected		Received	Matrix		Client Sample ID
	Date	Time By		Code	Type	
D12516-1	04/14/10	09:30 KR	04/15/10	AQ	Surface Water	COTTONWOOD GULCH UG
D12516-2	04/14/10	10:00 KR	04/15/10	AQ	Surface Water	COTTONWOOD GULCH CONFLUENCE
D12516-3	04/14/10	12:30 KR	04/15/10	AQ	Surface Water	COTTONWOOD GULCH DG1
D12516-4	04/14/10	13:00 KR	04/15/10	AQ	Surface Water	COTTONWOOD GULCH DG2
D12516-5	04/14/10	13:30 KR	04/15/10	AQ	Surface Water	COTTONWOOD GULCH RIVER
D12516-6	04/14/10	14:00 KR	04/15/10	SO	Soil	PAD
D12516-7	04/14/10	14:15 KR	04/15/10	SO	Soil	ACCESS ROAD

---

Soil samples reported on a dry weight basis unless otherwise indicated on result page.

## CASE NARRATIVE / CONFORMANCE SUMMARY

**Client:** HRL Compliance Solutions

**Job No** D12516

**Site:** Pure Energy Release Job#10-347

**Report Dat** 4/16/2010 11:53:39 AM

On 04/15/2010, seven (7) samples were received at Accutest Mountain States at a temperature of 2.5°C. The samples were intact and properly preserved, unless noted below. An Accutest Mountain States Job Number of D12516 was assigned to the project. The laboratory sample IDs, client sample IDs, and dates of sample collection are detailed in the report's Results Summary

Specified quality control criteria were achieved for this job except as noted below. For more information, please refer to the analytical results and QC summary pages.

### Volatiles by GC By Method SW846 8015B

<b>Matrix</b> SO	<b>Batch ID:</b> GGB204
------------------	-------------------------

- All samples were analyzed within the recommended method holding time.
- Samples D12516-6MS and D12516-6MSD were used as the QC samples indicated.
- All method blanks for this batch meet method specific criteria.

### Volatiles by GC By Method SW846 8021B

<b>Matrix</b> AQ	<b>Batch ID:</b> GTA354
------------------	-------------------------

- All samples were analyzed within the recommended method holding time.
- All method blanks for this batch meet method specific criteria.
- Samples D12516-1MS and D12516-1MSD were used as the QC samples indicated.

<b>Matrix</b> SO	<b>Batch ID:</b> GTA353
------------------	-------------------------

- All samples were analyzed within the recommended method holding time.
- All method blanks for this batch meet method specific criteria.
- Samples D12516-6MS and D12516-6MSD were used as the QC samples indicated.

### Extractables by GC By Method SW846-8015B

<b>Matrix</b> SO	<b>Batch ID:</b> OP1692
------------------	-------------------------

- All samples were extracted within the recommended method holding time.
- All samples were analyzed within the recommended method holding time.
- Samples D12516-6MS and D12516-6MSD were used as the QC samples indicated.
- All method blanks for this batch meet method specific criteria.

### Wet Chemistry By Method EPA 300/SW846 9056

<b>Matrix</b> AQ	<b>Batch ID:</b> GP1788
------------------	-------------------------

- All samples were prepared within the recommended method holding time.
- All samples were analyzed within the recommended method holding time.
- All method blanks for this batch meet method specific criteria.
- Samples D12515-4MS and D12515-4MSD were used as the QC samples for the Chloride analysis.

<b>Matrix</b> SO	<b>Batch ID:</b> GP1789
------------------	-------------------------

- All samples were prepared within the recommended method holding time.
- All samples were analyzed within the recommended method holding time.
- All method blanks for this batch meet method specific criteria.
- Sample D12516-7DUP was used as the QC sample for the Chloride analysis.

### Wet Chemistry By Method SM19 2540B M

<b>Matrix</b> SO	<b>Batch ID:</b> GN3947
------------------	-------------------------

- The data for SM19 2540B M meets quality control requirements.

Accutest Mountain States certifies that data reported for samples received, listed on the associated custody chain or analytical task order, were produced to specifications meeting Accutest Mountain States's Quality System precision, accuracy and complete

Estimated non-standard method measurement uncertainty data is available on request, based on quality control bias and implicit for standard methods. Acceptable uncertainty requires tested parameter quality control data to meet method criteria.

Accutest Mountain States is not responsible for data quality assumptions if partial reports are used and recommends that this report be used in its entirety. Data release is authorized by Accutest Mountain States indicated via signature on the report cov



## Sample Results

---

## Report of Analysis

---

## Report of Analysis

31  
3

<b>Client Sample ID:</b> COTTONWOOD GULCH UG	<b>Date Sampled:</b> 04/14/10
<b>Lab Sample ID:</b> D12516-1	<b>Date Received:</b> 04/15/10
<b>Matrix:</b> AQ - Surface Water	<b>Percent Solids:</b> n/a
<b>Method:</b> SW846 8021B	
<b>Project:</b> Pure Energy Release Job#10-347	

	File ID	DF	Analyzed	By	Prep Date	Prep Batch	Analytical Batch
Run #1	TA6254.D	1	04/16/10	DG	n/a	n/a	GTA354
Run #2							

	Purge Volume
Run #1	5.0 ml
Run #2	

### Purgeable Aromatics

CAS No.	Compound	Result	RL	Units	Q
71-43-2	Benzene	ND	1.0	ug/l	
108-88-3	Toluene	ND	2.0	ug/l	
100-41-4	Ethylbenzene	ND	2.0	ug/l	
	m,p-Xylene	ND	2.0	ug/l	
95-47-6	o-Xylene	ND	2.0	ug/l	

CAS No.	Surrogate Recoveries	Run# 1	Run# 2	Limits
120-82-1	1,2,4-Trichlorobenzene	107%		60-140%

ND = Not detected  
 RL = Reporting Limit  
 E = Indicates value exceeds calibration range

J = Indicates an estimated value  
 B = Indicates analyte found in associated method blank  
 N = Indicates presumptive evidence of a compound

## Report of Analysis

<b>Client Sample ID:</b>	COTTONWOOD GULCH UG		
<b>Lab Sample ID:</b>	D12516-1	<b>Date Sampled:</b>	04/14/10
<b>Matrix:</b>	AQ - Surface Water	<b>Date Received:</b>	04/15/10
<b>Project:</b>	Pure Energy Release Job#10-347	<b>Percent Solids:</b>	n/a

### General Chemistry

Analyte	Result	RL	Units	DF	Analyzed	By	Method
Chloride	25.8	2.5	mg/l	5	04/15/10 17:31	GH	EPA 300/SW846 9056

RL = Reporting Limit

## Report of Analysis

32  
3

<b>Client Sample ID:</b>	COTTONWOOD GULCH CONFLUENCE		
<b>Lab Sample ID:</b>	D12516-2	<b>Date Sampled:</b>	04/14/10
<b>Matrix:</b>	AQ - Surface Water	<b>Date Received:</b>	04/15/10
<b>Method:</b>	SW846 8021B	<b>Percent Solids:</b>	n/a
<b>Project:</b>	Pure Energy Release Job#10-347		

	File ID	DF	Analyzed	By	Prep Date	Prep Batch	Analytical Batch
Run #1	TA6257.D	1	04/16/10	DG	n/a	n/a	GTA354
Run #2							

	Purge Volume
Run #1	5.0 ml
Run #2	

### Purgeable Aromatics

CAS No.	Compound	Result	RL	Units	Q
71-43-2	Benzene	ND	1.0	ug/l	
108-88-3	Toluene	ND	2.0	ug/l	
100-41-4	Ethylbenzene	ND	2.0	ug/l	
	m,p-Xylene	ND	2.0	ug/l	
95-47-6	o-Xylene	ND	2.0	ug/l	

CAS No.	Surrogate Recoveries	Run# 1	Run# 2	Limits
120-82-1	1,2,4-Trichlorobenzene	105%		60-140%

ND = Not detected  
 RL = Reporting Limit  
 E = Indicates value exceeds calibration range

J = Indicates an estimated value  
 B = Indicates analyte found in associated method blank  
 N = Indicates presumptive evidence of a compound

## Report of Analysis

<b>Client Sample ID:</b>	COTTONWOOD GULCH CONFLUENCE		
<b>Lab Sample ID:</b>	D12516-2	<b>Date Sampled:</b>	04/14/10
<b>Matrix:</b>	AQ - Surface Water	<b>Date Received:</b>	04/15/10
<b>Project:</b>	Pure Energy Release Job#10-347	<b>Percent Solids:</b>	n/a

### General Chemistry

Analyte	Result	RL	Units	DF	Analyzed	By	Method
Chloride	25.9	2.5	mg/l	5	04/15/10 17:43	GH	EPA 300/SW846 9056

RL = Reporting Limit

## Report of Analysis

<b>Client Sample ID:</b> COTTONWOOD GULCH DG1	<b>Date Sampled:</b> 04/14/10
<b>Lab Sample ID:</b> D12516-3	<b>Date Received:</b> 04/15/10
<b>Matrix:</b> AQ - Surface Water	<b>Percent Solids:</b> n/a
<b>Method:</b> SW846 8021B	
<b>Project:</b> Pure Energy Release Job#10-347	

	File ID	DF	Analyzed	By	Prep Date	Prep Batch	Analytical Batch
Run #1	TA6258.D	1	04/16/10	DG	n/a	n/a	GTA354
Run #2							

	Purge Volume
Run #1	5.0 ml
Run #2	

**Purgeable Aromatics**

CAS No.	Compound	Result	RL	Units	Q
71-43-2	Benzene	ND	1.0	ug/l	
108-88-3	Toluene	ND	2.0	ug/l	
100-41-4	Ethylbenzene	ND	2.0	ug/l	
	m,p-Xylene	ND	2.0	ug/l	
95-47-6	o-Xylene	ND	2.0	ug/l	

CAS No.	Surrogate Recoveries	Run# 1	Run# 2	Limits
120-82-1	1,2,4-Trichlorobenzene	108%		60-140%

ND = Not detected  
 RL = Reporting Limit  
 E = Indicates value exceeds calibration range

J = Indicates an estimated value  
 B = Indicates analyte found in associated method blank  
 N = Indicates presumptive evidence of a compound

## Report of Analysis

<b>Client Sample ID:</b> COTTONWOOD GULCH DG1	<b>Date Sampled:</b> 04/14/10
<b>Lab Sample ID:</b> D12516-3	<b>Date Received:</b> 04/15/10
<b>Matrix:</b> AQ - Surface Water	<b>Percent Solids:</b> n/a
<b>Project:</b> Pure Energy Release Job#10-347	

### General Chemistry

Analyte	Result	RL	Units	DF	Analyzed	By	Method
Chloride	26.0	2.5	mg/l	5	04/15/10 17:56	GH	EPA 300/SW846 9056

RL = Reporting Limit

## Report of Analysis

34  
3

<b>Client Sample ID:</b> COTTONWOOD GULCH DG2	<b>Date Sampled:</b> 04/14/10
<b>Lab Sample ID:</b> D12516-4	<b>Date Received:</b> 04/15/10
<b>Matrix:</b> AQ - Surface Water	<b>Percent Solids:</b> n/a
<b>Method:</b> SW846 8021B	
<b>Project:</b> Pure Energy Release Job#10-347	

Run #	File ID	DF	Analyzed	By	Prep Date	Prep Batch	Analytical Batch
Run #1	TA6259.D	1	04/16/10	DG	n/a	n/a	GTA354
Run #2							

Run #	Purge Volume
Run #1	5.0 ml
Run #2	

### Purgeable Aromatics

CAS No.	Compound	Result	RL	Units	Q
71-43-2	Benzene	ND	1.0	ug/l	
108-88-3	Toluene	ND	2.0	ug/l	
100-41-4	Ethylbenzene	ND	2.0	ug/l	
	m,p-Xylene	ND	2.0	ug/l	
95-47-6	o-Xylene	ND	2.0	ug/l	

CAS No.	Surrogate Recoveries	Run# 1	Run# 2	Limits
120-82-1	1,2,4-Trichlorobenzene	109%		60-140%

ND = Not detected  
 RL = Reporting Limit  
 E = Indicates value exceeds calibration range

J = Indicates an estimated value  
 B = Indicates analyte found in associated method blank  
 N = Indicates presumptive evidence of a compound

## Report of Analysis

<b>Client Sample ID:</b> COTTONWOOD GULCH DG2	<b>Date Sampled:</b> 04/14/10
<b>Lab Sample ID:</b> D12516-4	<b>Date Received:</b> 04/15/10
<b>Matrix:</b> AQ - Surface Water	<b>Percent Solids:</b> n/a
<b>Project:</b> Pure Energy Release Job#10-347	

### General Chemistry

Analyte	Result	RL	Units	DF	Analyzed	By	Method
Chloride	26.0	2.5	mg/l	5	04/15/10 18:09	GH	EPA 300/SW846 9056

RL = Reporting Limit

## Report of Analysis

3.5  
3

<b>Client Sample ID:</b> COTTONWOOD GULCH RIVER	
<b>Lab Sample ID:</b> D12516-5	<b>Date Sampled:</b> 04/14/10
<b>Matrix:</b> AQ - Surface Water	<b>Date Received:</b> 04/15/10
<b>Method:</b> SW846 8021B	<b>Percent Solids:</b> n/a
<b>Project:</b> Pure Energy Release Job#10-347	

	File ID	DF	Analyzed	By	Prep Date	Prep Batch	Analytical Batch
Run #1	TA6260.D	1	04/16/10	DG	n/a	n/a	GTA354
Run #2							

	Purge Volume
Run #1	5.0 ml
Run #2	

### Purgeable Aromatics

CAS No.	Compound	Result	RL	Units	Q
71-43-2	Benzene	ND	1.0	ug/l	
108-88-3	Toluene	ND	2.0	ug/l	
100-41-4	Ethylbenzene	ND	2.0	ug/l	
	m,p-Xylene	ND	2.0	ug/l	
95-47-6	o-Xylene	ND	2.0	ug/l	

CAS No.	Surrogate Recoveries	Run# 1	Run# 2	Limits
120-82-1	1,2,4-Trichlorobenzene	109%		60-140%

ND = Not detected  
 RL = Reporting Limit  
 E = Indicates value exceeds calibration range

J = Indicates an estimated value  
 B = Indicates analyte found in associated method blank  
 N = Indicates presumptive evidence of a compound

## Report of Analysis

<b>Client Sample ID:</b>	COTTONWOOD GULCH RIVER		
<b>Lab Sample ID:</b>	D12516-5	<b>Date Sampled:</b>	04/14/10
<b>Matrix:</b>	AQ - Surface Water	<b>Date Received:</b>	04/15/10
<b>Project:</b>	Pure Energy Release Job#10-347	<b>Percent Solids:</b>	n/a

### General Chemistry

Analyte	Result	RL	Units	DF	Analyzed	By	Method
Chloride	25.7	2.5	mg/l	5	04/15/10 18:21	GH	EPA 300/SW846 9056

RL = Reporting Limit

## Report of Analysis

3.6  
3

<b>Client Sample ID:</b> PAD	
<b>Lab Sample ID:</b> D12516-6	<b>Date Sampled:</b> 04/14/10
<b>Matrix:</b> SO - Soil	<b>Date Received:</b> 04/15/10
<b>Method:</b> SW846 8015B	<b>Percent Solids:</b> 85.4
<b>Project:</b> Pure Energy Release Job#10-347	

	File ID	DF	Analyzed	By	Prep Date	Prep Batch	Analytical Batch
Run #1	GB3771.D	1	04/15/10	DG	n/a	n/a	GGB204
Run #2							

	Initial Weight
Run #1	1.0 g
Run #2	

CAS No.	Compound	Result	RL	Units	Q
	TPH-GRO (C6-C10)	ND	1.2	mg/kg	
CAS No.	Surrogate Recoveries	Run# 1	Run# 2	Limits	
120-82-1	1,2,4-Trichlorobenzene	95%		60-140%	

ND = Not detected  
 RL = Reporting Limit  
 E = Indicates value exceeds calibration range

J = Indicates an estimated value  
 B = Indicates analyte found in associated method blank  
 N = Indicates presumptive evidence of a compound

## Report of Analysis

<b>Client Sample ID:</b> PAD	
<b>Lab Sample ID:</b> D12516-6	<b>Date Sampled:</b> 04/14/10
<b>Matrix:</b> SO - Soil	<b>Date Received:</b> 04/15/10
<b>Method:</b> SW846 8021B	<b>Percent Solids:</b> 85.4
<b>Project:</b> Pure Energy Release Job#10-347	

	File ID	DF	Analyzed	By	Prep Date	Prep Batch	Analytical Batch
Run #1	TA6247.D	1	04/15/10	DG	n/a	n/a	GTA353
Run #2							

	Initial Weight
Run #1	1.0 g
Run #2	

### Purgeable Aromatics

CAS No.	Compound	Result	RL	Units	Q
71-43-2	Benzene	25.0	5.9	ug/kg	
108-88-3	Toluene	103	12	ug/kg	
100-41-4	Ethylbenzene	ND	12	ug/kg	
	m,p-Xylene	94.6	12	ug/kg	
95-47-6	o-Xylene	24.4	12	ug/kg	

CAS No.	Surrogate Recoveries	Run# 1	Run# 2	Limits
120-82-1	1,2,4-Trichlorobenzene	112%		60-140%

ND = Not detected  
 RL = Reporting Limit  
 E = Indicates value exceeds calibration range

J = Indicates an estimated value  
 B = Indicates analyte found in associated method blank  
 N = Indicates presumptive evidence of a compound

## Report of Analysis

3.6  
3

<b>Client Sample ID:</b> PAD	
<b>Lab Sample ID:</b> D12516-6	<b>Date Sampled:</b> 04/14/10
<b>Matrix:</b> SO - Soil	<b>Date Received:</b> 04/15/10
<b>Method:</b> SW846-8015B SW846 3550B	<b>Percent Solids:</b> 85.4
<b>Project:</b> Pure Energy Release Job#10-347	

	File ID	DF	Analyzed	By	Prep Date	Prep Batch	Analytical Batch
Run #1	FC2453.D	1	04/15/10	CP	04/15/10	OP1692	GFC140
Run #2							

	Initial Weight	Final Volume
Run #1	30.0 g	2.0 ml
Run #2		

CAS No.	Compound	Result	RL	Units	Q
	TPH-DRO (C10-C28)	ND	16	mg/kg	
CAS No.	Surrogate Recoveries	Run# 1	Run# 2	Limits	
84-15-1	o-Terphenyl	97%		63-130%	

ND = Not detected  
 RL = Reporting Limit  
 E = Indicates value exceeds calibration range

J = Indicates an estimated value  
 B = Indicates analyte found in associated method blank  
 N = Indicates presumptive evidence of a compound

## Report of Analysis

<b>Client Sample ID:</b> PAD	<b>Date Sampled:</b> 04/14/10
<b>Lab Sample ID:</b> D12516-6	<b>Date Received:</b> 04/15/10
<b>Matrix:</b> SO - Soil	<b>Percent Solids:</b> 85.4
<b>Project:</b> Pure Energy Release Job#10-347	

### General Chemistry

Analyte	Result	RL	Units	DF	Analyzed	By	Method
Chloride	1290	29	mg/kg	5	04/16/10 10:11	GH	EPA 300/SW846 9056
Solids, Percent	85.4		%	1	04/15/10	SWT	SM19 2540B M

RL = Reporting Limit

## Report of Analysis

37  
3

<b>Client Sample ID:</b> ACCESS ROAD	
<b>Lab Sample ID:</b> D12516-7	<b>Date Sampled:</b> 04/14/10
<b>Matrix:</b> SO - Soil	<b>Date Received:</b> 04/15/10
<b>Method:</b> SW846 8015B	<b>Percent Solids:</b> 88.5
<b>Project:</b> Pure Energy Release Job#10-347	

	File ID	DF	Analyzed	By	Prep Date	Prep Batch	Analytical Batch
Run #1	GB3774.D	1	04/15/10	DG	n/a	n/a	GGB204
Run #2							

	Initial Weight
Run #1	1.0 g
Run #2	

CAS No.	Compound	Result	RL	Units	Q
	TPH-GRO (C6-C10)	ND	1.1	mg/kg	
CAS No.	Surrogate Recoveries	Run# 1	Run# 2	Limits	
120-82-1	1,2,4-Trichlorobenzene	97%		60-140%	

ND = Not detected  
 RL = Reporting Limit  
 E = Indicates value exceeds calibration range

J = Indicates an estimated value  
 B = Indicates analyte found in associated method blank  
 N = Indicates presumptive evidence of a compound

## Report of Analysis

37  
3

<b>Client Sample ID:</b> ACCESS ROAD	
<b>Lab Sample ID:</b> D12516-7	<b>Date Sampled:</b> 04/14/10
<b>Matrix:</b> SO - Soil	<b>Date Received:</b> 04/15/10
<b>Method:</b> SW846 8021B	<b>Percent Solids:</b> 88.5
<b>Project:</b> Pure Energy Release Job#10-347	

	File ID	DF	Analyzed	By	Prep Date	Prep Batch	Analytical Batch
Run #1	TA6250.D	1	04/15/10	DG	n/a	n/a	GTA353
Run #2							

	Initial Weight
Run #1	1.0 g
Run #2	

### Purgeable Aromatics

CAS No.	Compound	Result	RL	Units	Q
71-43-2	Benzene	ND	5.6	ug/kg	
108-88-3	Toluene	ND	11	ug/kg	
100-41-4	Ethylbenzene	ND	11	ug/kg	
	m,p-Xylene	ND	11	ug/kg	
95-47-6	o-Xylene	ND	11	ug/kg	

CAS No.	Surrogate Recoveries	Run# 1	Run# 2	Limits
120-82-1	1,2,4-Trichlorobenzene	96%		60-140%

ND = Not detected  
 RL = Reporting Limit  
 E = Indicates value exceeds calibration range

J = Indicates an estimated value  
 B = Indicates analyte found in associated method blank  
 N = Indicates presumptive evidence of a compound

## Report of Analysis

37  
3

<b>Client Sample ID:</b> ACCESS ROAD	
<b>Lab Sample ID:</b> D12516-7	<b>Date Sampled:</b> 04/14/10
<b>Matrix:</b> SO - Soil	<b>Date Received:</b> 04/15/10
<b>Method:</b> SW846-8015B SW846 3550B	<b>Percent Solids:</b> 88.5
<b>Project:</b> Pure Energy Release Job#10-347	

	File ID	DF	Analyzed	By	Prep Date	Prep Batch	Analytical Batch
Run #1	FC2456.D	1	04/15/10	CP	04/15/10	OP1692	GFC140
Run #2							

	Initial Weight	Final Volume
Run #1	30.0 g	2.0 ml
Run #2		

CAS No.	Compound	Result	RL	Units	Q
	TPH-DRO (C10-C28)	28.4	15	mg/kg	
CAS No.	Surrogate Recoveries	Run# 1	Run# 2	Limits	
84-15-1	o-Terphenyl	99%		63-130%	

ND = Not detected  
 RL = Reporting Limit  
 E = Indicates value exceeds calibration range

J = Indicates an estimated value  
 B = Indicates analyte found in associated method blank  
 N = Indicates presumptive evidence of a compound

## Report of Analysis

<b>Client Sample ID:</b> ACCESS ROAD	
<b>Lab Sample ID:</b> D12516-7	<b>Date Sampled:</b> 04/14/10
<b>Matrix:</b> SO - Soil	<b>Date Received:</b> 04/15/10
	<b>Percent Solids:</b> 88.5
<b>Project:</b> Pure Energy Release Job#10-347	

### General Chemistry

Analyte	Result	RL	Units	DF	Analyzed	By	Method
Chloride	623	28	mg/kg	5	04/16/10 10:23	GH	EPA 300/SW846 9056
Solids, Percent	88.5		%	1	04/15/10	SWT	SM19 2540B M

RL = Reporting Limit



## Misc. Forms

---

### Custody Documents and Other Forms

---

Includes the following where applicable:

- Chain of Custody

4036 Youngfield Street, Wheat Ridge, Colorado 80033  
TEL: 303-425-6021; 877-737-4521 FAX: 303-425-6854  
www.accutest.com

FED-EX Tracking # \_\_\_\_\_ Bottle Order Control # \_\_\_\_\_  
Accutest Quote # \_\_\_\_\_ Accutest Job # D12516

Client / Reporting Information		Project Information				Requested Analysis ( see TEST CODE sheet)												Matrix Codes																																																																					
Company Name <u>H2L Compliance Solutions Inc</u>		Project Name <u>Pure Energy Release Job #10-347</u>				<div style="display: flex; justify-content: space-around;"> <span>BTEX</span> <span>Chloride</span> <span>TEPH</span> <span>TUPH</span> </div>												DW - Drinking Water GW - Ground Water WW - Water SW - Surface Water SO - Soil SL - Sludge SED - Sediment OI - Oil LIQ - Other Liquid AIR - Air SOL - Other Solid WP - Wipe FD - Field Blank EB - Equipment Blank RB - Rinse Blank TB - Trip Blank																																																																					
Street Address <u>744 Horizon Ct Suite 142</u>		Billing Information ( if different from Report to)																																																																																					
City State Zip <u>Grand Junction CO 81506</u>		Company Name																																																																																					
Project Contact <u>Mark Mumby mmumby@h2l.com</u>		Street Address																																																																																					
Phone # <u>970 243 3271</u>		Client Purchase Order #				<table border="1"> <tr> <th>Matrix</th> <th># of bottles</th> <th>NIOSH</th> <th>HR03</th> <th>NIHSA</th> <th>NONE</th> <th>DI WATER</th> <th>MEDH</th> <th>ENCODE</th> <th>42C</th> </tr> <tr> <td>SW</td> <td>3</td> <td>X</td> <td></td> <td></td> <td></td> <td></td> <td></td> <td></td> <td>X</td> </tr> <tr> <td>SW</td> <td>3</td> <td>X</td> <td></td> <td></td> <td></td> <td></td> <td></td> <td></td> <td>X</td> </tr> <tr> <td>SW</td> <td>3</td> <td>X</td> <td></td> <td></td> <td></td> <td></td> <td></td> <td></td> <td>X</td> </tr> <tr> <td>SW</td> <td>3</td> <td>X</td> <td></td> <td></td> <td></td> <td></td> <td></td> <td></td> <td>X</td> </tr> <tr> <td>SO</td> <td>2</td> <td></td> <td></td> <td></td> <td></td> <td></td> <td></td> <td></td> <td>X</td> </tr> <tr> <td>SO</td> <td>2</td> <td></td> <td></td> <td></td> <td></td> <td></td> <td></td> <td></td> <td>X</td> </tr> </table>												Matrix	# of bottles	NIOSH	HR03	NIHSA	NONE	DI WATER	MEDH	ENCODE	42C	SW	3	X							X	SW	3	X							X	SW	3	X							X	SW	3	X							X	SO	2								X	SO	2								X
Matrix	# of bottles	NIOSH	HR03	NIHSA	NONE	DI WATER	MEDH	ENCODE	42C																																																																														
SW	3	X							X																																																																														
SW	3	X							X																																																																														
SW	3	X							X																																																																														
SW	3	X							X																																																																														
SO	2								X																																																																														
SO	2								X																																																																														
Project Manager <u>Mark Mumby</u>		Attention:																																																																																					
Sampler(s) Name(s) <u>Kris Rowe</u>		Collection				LAB USE ONLY																																																																																	
Field ID / Point of Collection	MEQ/DBI Vol #	Date	Time	Sampled by	Matrix	# of bottles	NIOSH	HR03	NIHSA	NONE	DI WATER	MEDH	ENCODE	42C	LAB USE ONLY																																																																								
<u>Cottonwood Gulch 4C</u>		<u>4-14-10</u>	<u>0930</u>	<u>KR</u>	<u>SW</u>	<u>3</u>								X	<u>01</u>																																																																								
<u>Cottonwood Gulch Confluence</u>		<u>4-14-10</u>	<u>1000</u>	<u>KR</u>	<u>SW</u>	<u>3</u>								X	<u>02</u>																																																																								
<u>Cottonwood Gulch DG-1</u>		<u>4-14-10</u>	<u>1230</u>	<u>KR</u>	<u>SW</u>	<u>3</u>								X	<u>03</u>																																																																								
<u>Cottonwood Gulch DG-2</u>		<u>4-14-10</u>	<u>1300</u>	<u>KR</u>	<u>SW</u>	<u>3</u>								X	<u>04</u>																																																																								
<u>Cottonwood Gulch River</u>		<u>4-14-10</u>	<u>1330</u>	<u>KR</u>	<u>SW</u>	<u>3</u>								X	<u>05</u>																																																																								
<u>PAD</u>		<u>4-14-10</u>	<u>1400</u>	<u>KR</u>	<u>SO</u>	<u>2</u>								X	<u>06</u>																																																																								
<u>Access Road</u>		<u>4-14-10</u>	<u>1415</u>	<u>KR</u>	<u>SO</u>	<u>2</u>								X	<u>07</u>																																																																								

4.1  
4

Turnaround Time ( Business days)		Data Deliverable Information				Comments / Special Instructions
<input type="checkbox"/> Std. 10 Business Days <input type="checkbox"/> UST Analysis 3-5 Days <input type="checkbox"/> 6 - 9 Day RUSH <input type="checkbox"/> 3 - 5 Day RUSH <input type="checkbox"/> 2 Day EMERGENCY <input checked="" type="checkbox"/> 1 Day EMERGENCY		Approved By (Accutest PM) / Date: _____ <input type="checkbox"/> Level 1 <input checked="" type="checkbox"/> Level 2 <input type="checkbox"/> Level 3 <input type="checkbox"/> Level 4 Level 1 = Results Only Level 2 = Results + QC Summary + Case Narrative Level 3 = Results + QC Summary + Partial Raw data Level 4 = Full Deliverable				<input checked="" type="checkbox"/> PDF <input type="checkbox"/> EDD Format <input type="checkbox"/> Other _____
Emergency & Rush TIA data available VIA Lablink						
Sample Custody must be documented below each time samples change possession, including courier delivery.						
Relinquished by Sampler <u>[Signature]</u>	Date Time: <u>4-14-10 1700</u>	Received By: <u>1</u>	Relinquished By: <u>2</u>	Date Time:	Received By:	
Relinquished by Sampler:	Date Time:	Received By: <u>3</u>	Relinquished By: <u>4</u>	Date Time:	Received By:	
Relinquished by:	Date Time:	Received By: <u>[Signature]</u>	Custody Seal # <u>fedc</u>	<input checked="" type="checkbox"/> Intact <input type="checkbox"/> Not Intact	Preserved whigs applicable <input checked="" type="checkbox"/>	On ice <input checked="" type="checkbox"/>
						Cooler Temp <u>2.5</u>



# Accutest Laboratories Sample Receipt Summary

Accutest Job Number: D12516

Client: HRL

Immediate Client Services Action Required: No

Date / Time Received: 4/15/2010 9:20:00 AM

No. Coolers: 1

Client Service Action Required at Login: No

Project: PURE ENERGY

Airbill #'s: FEDX

<u>Cooler Security</u>	<u>Y</u>	<u>or</u>	<u>N</u>		<u>Y</u>	<u>or</u>	<u>N</u>
1. Custody Seals Present:	<input checked="" type="checkbox"/>		<input type="checkbox"/>	3. COC Present:	<input checked="" type="checkbox"/>		<input type="checkbox"/>
2. Custody Seals Intact:	<input checked="" type="checkbox"/>		<input type="checkbox"/>	4. Smpl Dates/Time OK	<input checked="" type="checkbox"/>		<input type="checkbox"/>

<u>Cooler Temperature</u>	<u>Y</u>	<u>or</u>	<u>N</u>
1. Temp criteria achieved:	<input checked="" type="checkbox"/>		<input type="checkbox"/>
2. Cooler temp verification:			Infrared gun
3. Cooler media:			Ice (bag)

<u>Quality Control Preservation</u>	<u>Y</u>	<u>or</u>	<u>N</u>	<u>N/A</u>
1. Trip Blank present / cooler:	<input type="checkbox"/>		<input type="checkbox"/>	
2. Trip Blank listed on COC:	<input type="checkbox"/>		<input type="checkbox"/>	
3. Samples preserved properly:	<input checked="" type="checkbox"/>		<input type="checkbox"/>	
4. VOCs headspace free:	<input type="checkbox"/>		<input type="checkbox"/>	<input checked="" type="checkbox"/>

<u>Sample Integrity - Documentation</u>	<u>Y</u>	<u>or</u>	<u>N</u>
1. Sample labels present on bottles:	<input checked="" type="checkbox"/>		<input type="checkbox"/>
2. Container labeling complete:	<input checked="" type="checkbox"/>		<input type="checkbox"/>
3. Sample container label / COC agree:	<input checked="" type="checkbox"/>		<input type="checkbox"/>

<u>Sample Integrity - Condition</u>	<u>Y</u>	<u>or</u>	<u>N</u>
1. Sample recvd within HT:	<input checked="" type="checkbox"/>		<input type="checkbox"/>
2. All containers accounted for:	<input checked="" type="checkbox"/>		<input type="checkbox"/>
3. Condition of sample:			Intact

<u>Sample Integrity - Instructions</u>	<u>Y</u>	<u>or</u>	<u>N</u>	<u>N/A</u>
1. Analysis requested is clear:	<input checked="" type="checkbox"/>		<input type="checkbox"/>	
2. Bottles received for unspecified tests	<input type="checkbox"/>		<input checked="" type="checkbox"/>	
3. Sufficient volume rec'd for analysis:	<input checked="" type="checkbox"/>		<input type="checkbox"/>	
4. Compositing instructions clear:	<input type="checkbox"/>		<input type="checkbox"/>	<input checked="" type="checkbox"/>
5. Filtering instructions clear:	<input type="checkbox"/>		<input type="checkbox"/>	<input checked="" type="checkbox"/>

Comments

Empty box for comments.

Accutest Laboratories  
V:508.481.6200

495 Technology Center West, Bldg One  
F: 508.481.7753

Marlborough, MA  
www.accutest.com

4.1  
4



## GC Volatiles

5

## QC Data Summaries

---

Includes the following where applicable:

- Method Blank Summaries
- Blank Spike Summaries
- Matrix Spike and Duplicate Summaries

## Method Blank Summary

**Job Number:** D12516  
**Account:** HRLCCOGJ HRL Compliance Solutions  
**Project:** Pure Energy Release Job#10-347

Sample	File ID	DF	Analyzed	By	Prep Date	Prep Batch	Analytical Batch
GGB204-MB	GB3769.D	1	04/15/10	DG	n/a	n/a	GGB204

The QC reported here applies to the following samples:

Method: SW846 8015B

D12516-6, D12516-7

CAS No.	Compound	Result	RL	MDL	Units	Q
	TPH-GRO (C6-C10)	ND	1.0	0.25	mg/kg	

CAS No.	Surrogate Recoveries	Limits
120-82-1	1,2,4-Trichlorobenzene	103% 60-140%

## Method Blank Summary

**Job Number:** D12516  
**Account:** HRLCCOGJ HRL Compliance Solutions  
**Project:** Pure Energy Release Job#10-347

Sample	File ID	DF	Analyzed	By	Prep Date	Prep Batch	Analytical Batch
GTA353-MB	TA6245.D	1	04/15/10	DG	n/a	n/a	GTA353

The QC reported here applies to the following samples:

Method: SW846 8021B

D12516-6, D12516-7

CAS No.	Compound	Result	RL	MDL	Units	Q
71-43-2	Benzene	ND	5.0	1.7	ug/kg	
100-41-4	Ethylbenzene	ND	10	1.8	ug/kg	
108-88-3	Toluene	ND	10	1.8	ug/kg	
95-47-6	o-Xylene	ND	10	1.6	ug/kg	
	m,p-Xylene	ND	10	1.6	ug/kg	

CAS No.	Surrogate Recoveries	Limits
120-82-1	1,2,4-Trichlorobenzene	118% 60-140%

## Method Blank Summary

**Job Number:** D12516  
**Account:** HRLCCOGJ HRL Compliance Solutions  
**Project:** Pure Energy Release Job#10-347

Sample	File ID	DF	Analyzed	By	Prep Date	Prep Batch	Analytical Batch
GTA354-MB	TA6252.D	1	04/16/10	DG	n/a	n/a	GTA354

The QC reported here applies to the following samples:

Method: SW846 8021B

D12516-1, D12516-2, D12516-3, D12516-4, D12516-5

CAS No.	Compound	Result	RL	MDL	Units	Q
71-43-2	Benzene	ND	1.0	0.28	ug/l	
100-41-4	Ethylbenzene	ND	2.0	0.30	ug/l	
108-88-3	Toluene	ND	2.0	0.35	ug/l	
95-47-6	o-Xylene	ND	2.0	0.30	ug/l	
	m,p-Xylene	ND	2.0	0.30	ug/l	

CAS No.	Surrogate Recoveries	Limits
120-82-1	1,2,4-Trichlorobenzene	111% 60-140%

# Blank Spike Summary

**Job Number:** D12516  
**Account:** HRLCCOGJ HRL Compliance Solutions  
**Project:** Pure Energy Release Job#10-347

Sample	File ID	DF	Analyzed	By	Prep Date	Prep Batch	Analytical Batch
GGB204-BS	GB3770.D	1	04/15/10	DG	n/a	n/a	GGB204

The QC reported here applies to the following samples:

Method: SW846 8015B

D12516-6, D12516-7

CAS No.	Compound	Spike mg/kg	BSP mg/kg	BSP %	Limits
	TPH-GRO (C6-C10)	11	9.96	91	70-130

CAS No.	Surrogate Recoveries	BSP	Limits
120-82-1	1,2,4-Trichlorobenzene	111%	60-140%

# Blank Spike Summary

**Job Number:** D12516  
**Account:** HRLCCOGJ HRL Compliance Solutions  
**Project:** Pure Energy Release Job#10-347

Sample	File ID	DF	Analyzed	By	Prep Date	Prep Batch	Analytical Batch
GTA353-BS	TA6246.D	1	04/15/10	DG	n/a	n/a	GTA353

The QC reported here applies to the following samples:

Method: SW846 8021B

D12516-6, D12516-7

CAS No.	Compound	Spike ug/kg	BSP ug/kg	BSP %	Limits
71-43-2	Benzene	136	134	99	70-130
100-41-4	Ethylbenzene	228	224	98	70-130
108-88-3	Toluene	1060	983	93	70-130
95-47-6	o-Xylene	330	336	102	70-130
	m,p-Xylene	750	734	98	70-130

CAS No.	Surrogate Recoveries	BSP	Limits
120-82-1	1,2,4-Trichlorobenzene	131%	60-140%

# Blank Spike Summary

**Job Number:** D12516  
**Account:** HRLCCOGJ HRL Compliance Solutions  
**Project:** Pure Energy Release Job#10-347

Sample	File ID	DF	Analyzed	By	Prep Date	Prep Batch	Analytical Batch
GTA354-BS	TA6253.D	1	04/16/10	DG	n/a	n/a	GTA354

The QC reported here applies to the following samples:

Method: SW846 8021B

D12516-1, D12516-2, D12516-3, D12516-4, D12516-5

CAS No.	Compound	Spike ug/l	BSP ug/l	BSP %	Limits
71-43-2	Benzene	27.2	26.8	99	70-130
100-41-4	Ethylbenzene	45.6	45.4	100	70-130
108-88-3	Toluene	212	198	94	70-130
95-47-6	o-Xylene	65.9	68.0	103	70-130
	m,p-Xylene	150	149	99	70-130

CAS No.	Surrogate Recoveries	BSP	Limits
120-82-1	1,2,4-Trichlorobenzene	132%	60-140%

# Matrix Spike/Matrix Spike Duplicate Summary

**Job Number:** D12516  
**Account:** HRLCCOGJ HRL Compliance Solutions  
**Project:** Pure Energy Release Job#10-347

Sample	File ID	DF	Analyzed	By	Prep Date	Prep Batch	Analytical Batch
D12516-6MS	GB3772.D	1	04/15/10	DG	n/a	n/a	GGB204
D12516-6MSD	GB3773.D	1	04/15/10	DG	n/a	n/a	GGB204
D12516-6	GB3771.D	1	04/15/10	DG	n/a	n/a	GGB204

The QC reported here applies to the following samples:

Method: SW846 8015B

D12516-6, D12516-7

CAS No.	Compound	D12516-6 mg/kg	Spike mg/kg	MS mg/kg	MS %	MSD mg/kg	MSD %	RPD	Limits Rec/RPD
	TPH-GRO (C6-C10)	ND	12.9	10.0	78	8.43	65	17	62-130/30

CAS No.	Surrogate Recoveries	MS	MSD	D12516-6	Limits
120-82-1	1,2,4-Trichlorobenzene	111%	109%	95%	60-140%

5.3.1  
5

# Matrix Spike/Matrix Spike Duplicate Summary

**Job Number:** D12516  
**Account:** HRLCCOGJ HRL Compliance Solutions  
**Project:** Pure Energy Release Job#10-347

Sample	File ID	DF	Analyzed	By	Prep Date	Prep Batch	Analytical Batch
D12516-6MS	TA6248.D	1	04/15/10	DG	n/a	n/a	GTA353
D12516-6MSD	TA6249.D	1	04/15/10	DG	n/a	n/a	GTA353
D12516-6	TA6247.D	1	04/15/10	DG	n/a	n/a	GTA353

The QC reported here applies to the following samples:

Method: SW846 8021B

D12516-6, D12516-7

CAS No.	Compound	D12516-6 ug/kg	Spike Q ug/kg	MS ug/kg	MS %	MSD ug/kg	MSD %	RPD	Limits Rec/RPD
71-43-2	Benzene	25.0	159	170	91	207	114	20	70-130/30
100-41-4	Ethylbenzene	ND	267	251	94	268	100	7	62-130/30
108-88-3	Toluene	103	1240	1170	86	1310	97	11	70-130/30
95-47-6	o-Xylene	24.4	386	385	93	415	101	8	65-135/30
	m,p-Xylene	94.6	878	893	91	1020	105	13	60-140/30

CAS No.	Surrogate Recoveries	MS	MSD	D12516-6	Limits
120-82-1	1,2,4-Trichlorobenzene	131%	133%	112%	60-140%

5.3.2  
5

# Matrix Spike/Matrix Spike Duplicate Summary

**Job Number:** D12516  
**Account:** HRLCCOGJ HRL Compliance Solutions  
**Project:** Pure Energy Release Job#10-347

Sample	File ID	DF	Analyzed	By	Prep Date	Prep Batch	Analytical Batch
D12516-1MS	TA6255.D	1	04/16/10	DG	n/a	n/a	GTA354
D12516-1MSD	TA6256.D	1	04/16/10	DG	n/a	n/a	GTA354
D12516-1	TA6254.D	1	04/16/10	DG	n/a	n/a	GTA354

The QC reported here applies to the following samples:

Method: SW846 8021B

D12516-1, D12516-2, D12516-3, D12516-4, D12516-5

CAS No.	Compound	D12516-1 ug/l	Spike Q ug/l	MS ug/l	MS %	MSD ug/l	MSD %	RPD	Limits Rec/RPD
71-43-2	Benzene	ND	27.2	25.1	92	27.0	99	7	70-130/30
100-41-4	Ethylbenzene	ND	45.6	42.7	94	45.7	100	7	62-130/30
108-88-3	Toluene	ND	212	187	88	201	95	7	70-130/30
95-47-6	o-Xylene	ND	65.9	63.6	97	68.3	104	7	63-130/30
	m,p-Xylene	ND	150	139	93	149	99	7	70-134/30

CAS No.	Surrogate Recoveries	MS	MSD	D12516-1	Limits
120-82-1	1,2,4-Trichlorobenzene	130%	128%	107%	60-140%

5.3.3  
5



## GC Semi-volatiles

### QC Data Summaries

Includes the following where applicable:

- Method Blank Summaries
- Blank Spike Summaries
- Matrix Spike and Duplicate Summaries

# Method Blank Summary

**Job Number:** D12516  
**Account:** HRLCCOGJ HRL Compliance Solutions  
**Project:** Pure Energy Release Job#10-347

Sample	File ID	DF	Analyzed	By	Prep Date	Prep Batch	Analytical Batch
OP1692-MB	FC2451.D	1	04/15/10	CP	04/15/10	OP1692	GFC140

The QC reported here applies to the following samples:

Method: SW846-8015B

D12516-6, D12516-7

CAS No.	Compound	Result	RL	Units	Q
	TPH-DRO (C10-C28)	ND	13	mg/kg	

CAS No.	Surrogate Recoveries	Limits
84-15-1	o-Terphenyl	100% 63-130%

# Blank Spike Summary

**Job Number:** D12516  
**Account:** HRLCCOGJ HRL Compliance Solutions  
**Project:** Pure Energy Release Job#10-347

Sample	File ID	DF	Analyzed	By	Prep Date	Prep Batch	Analytical Batch
OP1692-BS	FC2452.D	1	04/15/10	CP	04/15/10	OP1692	GFC140

The QC reported here applies to the following samples:

Method: SW846-8015B

D12516-6, D12516-7

CAS No.	Compound	Spike mg/kg	BSP mg/kg	BSP %	Limits
	TPH-DRO (C10-C28)	667	646	97	70-130

CAS No.	Surrogate Recoveries	BSP	Limits
84-15-1	o-Terphenyl	101%	63-130%

6.2.1  
6

# Matrix Spike/Matrix Spike Duplicate Summary

**Job Number:** D12516  
**Account:** HRLCCOGJ HRL Compliance Solutions  
**Project:** Pure Energy Release Job#10-347

Sample	File ID	DF	Analyzed	By	Prep Date	Prep Batch	Analytical Batch
OP1692-MS	FC2454.D	1	04/15/10	CP	04/15/10	OP1692	GFC140
OP1692-MSD	FC2455.D	1	04/15/10	CP	04/15/10	OP1692	GFC140
D12516-6	FC2453.D	1	04/15/10	CP	04/15/10	OP1692	GFC140

The QC reported here applies to the following samples:

Method: SW846-8015B

D12516-6, D12516-7

CAS No.	Compound	D12516-6 mg/kg	Spike mg/kg	MS mg/kg	MS %	MSD mg/kg	MSD %	RPD	Limits Rec/RPD
	TPH-DRO (C10-C28)	ND	780	799	102	788	101	1	70-130/30

CAS No.	Surrogate Recoveries	MS	MSD	D12516-6	Limits
84-15-1	o-Terphenyl	105%	107%	97%	63-130%



## General Chemistry

### QC Data Summaries

Includes the following where applicable:

- Method Blank and Blank Spike Summaries
- Duplicate Summaries
- Matrix Spike Summaries

METHOD BLANK AND SPIKE RESULTS SUMMARY  
GENERAL CHEMISTRY

Login Number: D12516  
Account: HRLCCOGJ - HRL Compliance Solutions  
Project: Pure Energy Release Job#10-347

Analyte	Batch ID	RL	MB Result	Units	Spike Amount	BSP Result	BSP %Recov	QC Limits
Chloride	GP1788/GN3960	0.50	0.0	mg/l	20	18.4	92.0	90-110%
Chloride	GP1789/GN3962	5.0	2.2	mg/kg	200	184	92.0	90-110%

Associated Samples:

Batch GP1788: D12516-1, D12516-2, D12516-3, D12516-4, D12516-5

Batch GP1789: D12516-6, D12516-7

(\*) Outside of QC limits

DUPLICATE RESULTS SUMMARY  
GENERAL CHEMISTRY

Login Number: D12516  
Account: HRLCCOGJ - HRL Compliance Solutions  
Project: Pure Energy Release Job#10-347

Analyte	Batch ID	QC Sample	Units	Original Result	DUP Result	RPD	QC Limits
Chloride	GP1789/GN3962	D12516-7	mg/kg	623	611	1.9	0-20%

Associated Samples:

Batch GP1789: D12516-6, D12516-7

(\*) Outside of QC limits

7.2  
7

MATRIX SPIKE RESULTS SUMMARY  
GENERAL CHEMISTRY

Login Number: D12516  
Account: HRLCCOGJ - HRL Compliance Solutions  
Project: Pure Energy Release Job#10-347

Analyte	Batch ID	QC Sample	Units	Original Result	Spike Amount	MS Result	%Rec	QC Limits
Chloride	GP1788/GN3960	D12515-4	mg/l	261	50	312	102.0	80-120%

Associated Samples:

Batch GP1788: D12516-1, D12516-2, D12516-3, D12516-4, D12516-5

(\*) Outside of QC limits

(N) Matrix Spike Rec. outside of QC limits

MATRIX SPIKE DUPLICATE RESULTS SUMMARY  
GENERAL CHEMISTRY

Login Number: D12516  
Account: HRLCCOGJ - HRL Compliance Solutions  
Project: Pure Energy Release Job#10-347

Analyte	Batch ID	QC Sample	Units	Original Result	Spike Amount	MSD Result	RPD	QC Limit
Chloride	GP1788/GN3960	D12515-4	mg/l	261	50	312	0.0	20%

Associated Samples:

Batch GP1788: D12516-1, D12516-2, D12516-3, D12516-4, D12516-5

(\*) Outside of QC limits

(N) Matrix Spike Rec. outside of QC limits



## Technical Report for

### HRL Compliance Solutions

Pure Energy Release Job#10-347

Accutest Job Number: D12515

Sampling Date: 04/13/10

#### Report to:

HRL Compliance Solutions  
744 Horizon Court Suite 140  
Grand Junction, CO 81506  
mmumby@hrlcomp.com; krowe@hrlcomp.com

ATTN: Mark Mumby

Total number of pages in report: **35**



Test results contained within this data package meet the requirements of the National Environmental Laboratory Accreditation Conference and/or state specific certification programs as applicable.

A handwritten signature in cursive script that reads "Jesse L. Smith".

**Jesse L. Smith**  
Laboratory Director

Client Service contact: Shea Greiner 303-425-6021

Certifications: CO, ID, NE, NM, ND (R-027) (PW) UT (NELAP CO00049)

This report shall not be reproduced, except in its entirety, without the written approval of Accutest Laboratories.  
Test results relate only to samples analyzed.



April 21, 2010

Mark Mumby  
HRL Compliance Solutions  
744 Horizon Court Suite 140  
Grand Junction, CO 81506

Reference: Accutest Job D12515 (Revision 1)

Dear Mark Mumby:

The final report for Accutest job number D12515 has been revised to remove the MDL from the report and report results to the Reporting Limit (RL) for the 8021B analysis. The result reported did not change.

Sincerely,



Tiffany Pham  
Quality Assurance  
Accutest Mountain States

# Table of Contents

-1-

<b>Section 1: Sample Summary .....</b>	<b>4</b>
<b>Section 2: Case Narrative/Conformance Summary .....</b>	<b>5</b>
<b>Section 3: Sample Results .....</b>	<b>6</b>
<b>3.1: D12515-1: 433-28 PROD TANK .....</b>	<b>7</b>
<b>3.2: D12515-2: 433-28 UPRIGHT TANK .....</b>	<b>9</b>
<b>3.3: D12515-3: BAR DITCH .....</b>	<b>11</b>
<b>3.4: D12515-4: DRAINAGE .....</b>	<b>13</b>
<b>3.5: D12515-5: COTTONWOOD GULCH UG .....</b>	<b>15</b>
<b>3.6: D12515-6: COTTONWOOD GULCH CONFLUENCE .....</b>	<b>17</b>
<b>3.7: D12515-7: COTTONWOOD GULCH DG1 .....</b>	<b>19</b>
<b>3.8: D12515-8: COTTONWOOD GULCH DG2 .....</b>	<b>21</b>
<b>3.9: D12515-9: COTTONWOOD GULCH-RIVER .....</b>	<b>23</b>
<b>Section 4: Misc. Forms .....</b>	<b>25</b>
<b>4.1: Chain of Custody .....</b>	<b>26</b>
<b>Section 5: GC Volatiles - QC Data Summaries .....</b>	<b>28</b>
<b>5.1: Method Blank Summary .....</b>	<b>29</b>
<b>5.2: Blank Spike Summary .....</b>	<b>30</b>
<b>5.3: Matrix Spike/Matrix Spike Duplicate Summary .....</b>	<b>31</b>
<b>Section 6: General Chemistry - QC Data Summaries .....</b>	<b>32</b>
<b>6.1: Method Blank and Spike Results Summary .....</b>	<b>33</b>
<b>6.2: Matrix Spike Results Summary .....</b>	<b>34</b>
<b>6.3: Matrix Spike Duplicate Results Summary .....</b>	<b>35</b>



## Sample Summary

HRL Compliance Solutions

**Job No:** D12515

Pure Energy Release Job#10-347

Sample Number	Collected		Received	Matrix		Client Sample ID
	Date	Time By		Code	Type	
D12515-1	04/13/10	04:00 MM	04/15/10	AQ	Water	433-28 PROD TANK
D12515-2	04/13/10	04:00 MM	04/15/10	AQ	Water	433-28 UPRIGHT TANK
D12515-3	04/13/10	10:05 MM	04/15/10	AQ	Surface Water	BAR DITCH
D12515-4	04/13/10	11:00 MM	04/15/10	AQ	Surface Water	DRAINAGE
D12515-5	04/13/10	11:35 MM	04/15/10	AQ	Surface Water	COTTONWOOD GULCH UG
D12515-6	04/13/10	12:00 MM	04/15/10	AQ	Surface Water	COTTONWOOD GULCH CONFLUENCE
D12515-7	04/13/10	12:40 MM	04/15/10	AQ	Surface Water	COTTONWOOD GULCH DG1
D12515-8	04/13/10	13:05 MM	04/15/10	AQ	Surface Water	COTTONWOOD GULCH DG2
D12515-9	04/13/10	14:00 MM	04/15/10	AQ	Surface Water	COTTONWOOD GULCH-RIVER

## CASE NARRATIVE / CONFORMANCE SUMMARY

**Client:** HRL Compliance Solutions

**Job No** D12515

**Site:** Pure Energy Release Job#10-347

**Report Dat** 4/16/2010 1:28:23 PM

On 04/15/2010, nine (9) samples were received at Accutest Mountain States at a temperature of 2.5°C. The samples were intact and properly preserved, unless noted below. An Accutest Mountain States Job Number of D12515 was assigned to the project. The laboratory sample IDs, client sample IDs, and dates of sample collection are detailed in the report's Results Summary

Specified quality control criteria were achieved for this job except as noted below. For more information, please refer to the analytical results and QC summary pages.

### Volatiles by GC By Method SW846 8021B

**Matrix** AQ

**Batch ID:** GTA354

- All samples were analyzed within the recommended method holding time.
- All method blanks for this batch meet method specific criteria.
- Samples D12516-1MS and D12516-1MSD were used as the QC samples indicated.

### Wet Chemistry By Method EPA 300/SW846 9056

**Matrix** AQ

**Batch ID:** GP1788

- All samples were prepared within the recommended method holding time.
- All samples were analyzed within the recommended method holding time.
- All method blanks for this batch meet method specific criteria.
- Samples D12515-4MS and D12515-4MSD were used as the QC samples for the Chloride analysis.

Accutest Mountain States certifies that data reported for samples received, listed on the associated custody chain or analytical task order, were produced to specifications meeting Accutest Mountain States's Quality System precision, accuracy and complete

Estimated non-standard method measurement uncertainty data is available on request, based on quality control bias and implicit for standard methods. Acceptable uncertainty requires tested parameter quality control data to meet method criteria.

Accutest Mountain States is not responsible for data quality assumptions if partial reports are used and recommends that this report be used in its entirety. Data release is authorized by Accutest Mountain States indicated via signature on the report cov



## Sample Results

---

## Report of Analysis

---

## Report of Analysis

3.1  
3

<b>Client Sample ID:</b> 433-28 PROD TANK	<b>Date Sampled:</b> 04/13/10
<b>Lab Sample ID:</b> D12515-1	<b>Date Received:</b> 04/15/10
<b>Matrix:</b> AQ - Water	<b>Percent Solids:</b> n/a
<b>Method:</b> SW846 8021B	
<b>Project:</b> Pure Energy Release Job#10-347	

Run #	File ID	DF	Analyzed	By	Prep Date	Prep Batch	Analytical Batch
Run #1	TA6261.D	20	04/16/10	DG	n/a	n/a	GTA354
Run #2							

Run #	Purge Volume
Run #1	5.0 ml
Run #2	

### Purgeable Aromatics

CAS No.	Compound	Result	RL	Units	Q
71-43-2	Benzene	1450	20	ug/l	
108-88-3	Toluene	2870	40	ug/l	
100-41-4	Ethylbenzene	148	40	ug/l	
	m,p-Xylene	1530	40	ug/l	
95-47-6	o-Xylene	349	40	ug/l	

CAS No.	Surrogate Recoveries	Run# 1	Run# 2	Limits
120-82-1	1,2,4-Trichlorobenzene	115%		60-140%

ND = Not detected  
 RL = Reporting Limit  
 E = Indicates value exceeds calibration range

J = Indicates an estimated value  
 B = Indicates analyte found in associated method blank  
 N = Indicates presumptive evidence of a compound

## Report of Analysis

<b>Client Sample ID:</b> 433-28 PROD TANK	<b>Date Sampled:</b> 04/13/10
<b>Lab Sample ID:</b> D12515-1	<b>Date Received:</b> 04/15/10
<b>Matrix:</b> AQ - Water	<b>Percent Solids:</b> n/a
<b>Project:</b> Pure Energy Release Job#10-347	

### General Chemistry

Analyte	Result	RL	Units	DF	Analyzed	By	Method
Chloride	12700	250	mg/l	500	04/15/10 18:47	GH	EPA 300/SW846 9056

RL = Reporting Limit

## Report of Analysis

32  
3

<b>Client Sample ID:</b> 433-28 UPRIGHT TANK	
<b>Lab Sample ID:</b> D12515-2	<b>Date Sampled:</b> 04/13/10
<b>Matrix:</b> AQ - Water	<b>Date Received:</b> 04/15/10
<b>Method:</b> SW846 8021B	<b>Percent Solids:</b> n/a
<b>Project:</b> Pure Energy Release Job#10-347	

	File ID	DF	Analyzed	By	Prep Date	Prep Batch	Analytical Batch
Run #1	TA6262.D	50	04/16/10	DG	n/a	n/a	GTA354
Run #2							

	Purge Volume
Run #1	5.0 ml
Run #2	

### Purgeable Aromatics

CAS No.	Compound	Result	RL	Units	Q
71-43-2	Benzene	3440	50	ug/l	
108-88-3	Toluene	8720	100	ug/l	
100-41-4	Ethylbenzene	484	100	ug/l	
	m,p-Xylene	5210	100	ug/l	
95-47-6	o-Xylene	1110	100	ug/l	

CAS No.	Surrogate Recoveries	Run# 1	Run# 2	Limits
120-82-1	1,2,4-Trichlorobenzene	122%		60-140%

ND = Not detected  
 RL = Reporting Limit  
 E = Indicates value exceeds calibration range

J = Indicates an estimated value  
 B = Indicates analyte found in associated method blank  
 N = Indicates presumptive evidence of a compound

## Report of Analysis

<b>Client Sample ID:</b> 433-28 UPRIGHT TANK	<b>Date Sampled:</b> 04/13/10
<b>Lab Sample ID:</b> D12515-2	<b>Date Received:</b> 04/15/10
<b>Matrix:</b> AQ - Water	<b>Percent Solids:</b> n/a
<b>Project:</b> Pure Energy Release Job#10-347	

### General Chemistry

Analyte	Result	RL	Units	DF	Analyzed	By	Method
Chloride	12900	250	mg/l	500	04/15/10 18:59	GH	EPA 300/SW846 9056

RL = Reporting Limit

## Report of Analysis

<b>Client Sample ID:</b> BAR DITCH	<b>Date Sampled:</b> 04/13/10
<b>Lab Sample ID:</b> D12515-3	<b>Date Received:</b> 04/15/10
<b>Matrix:</b> AQ - Surface Water	<b>Percent Solids:</b> n/a
<b>Method:</b> SW846 8021B	
<b>Project:</b> Pure Energy Release Job#10-347	

	File ID	DF	Analyzed	By	Prep Date	Prep Batch	Analytical Batch
Run #1	TA6263.D	1	04/16/10	DG	n/a	n/a	GTA354
Run #2							

	Purge Volume
Run #1	5.0 ml
Run #2	

**Purgeable Aromatics**

CAS No.	Compound	Result	RL	Units	Q
71-43-2	Benzene	9.0	1.0	ug/l	
108-88-3	Toluene	46.4	2.0	ug/l	
100-41-4	Ethylbenzene	8.3	2.0	ug/l	
	m,p-Xylene	95.8	2.0	ug/l	
95-47-6	o-Xylene	18.8	2.0	ug/l	

CAS No.	Surrogate Recoveries	Run# 1	Run# 2	Limits
120-82-1	1,2,4-Trichlorobenzene	137%		60-140%

ND = Not detected  
 RL = Reporting Limit  
 E = Indicates value exceeds calibration range

J = Indicates an estimated value  
 B = Indicates analyte found in associated method blank  
 N = Indicates presumptive evidence of a compound

## Report of Analysis

<b>Client Sample ID:</b> BAR DITCH	<b>Date Sampled:</b> 04/13/10
<b>Lab Sample ID:</b> D12515-3	<b>Date Received:</b> 04/15/10
<b>Matrix:</b> AQ - Surface Water	<b>Percent Solids:</b> n/a
<b>Project:</b> Pure Energy Release Job#10-347	

### General Chemistry

Analyte	Result	RL	Units	DF	Analyzed	By	Method
Chloride	11800	250	mg/l	500	04/15/10 14:47	GH	EPA 300/SW846 9056

RL = Reporting Limit

## Report of Analysis

34  
3

<b>Client Sample ID:</b> DRAINAGE	
<b>Lab Sample ID:</b> D12515-4	<b>Date Sampled:</b> 04/13/10
<b>Matrix:</b> AQ - Surface Water	<b>Date Received:</b> 04/15/10
<b>Method:</b> SW846 8021B	<b>Percent Solids:</b> n/a
<b>Project:</b> Pure Energy Release Job#10-347	

	File ID	DF	Analyzed	By	Prep Date	Prep Batch	Analytical Batch
Run #1	TA6264.D	1	04/16/10	DG	n/a	n/a	GTA354
Run #2							

	Purge Volume
Run #1	5.0 ml
Run #2	

### Purgeable Aromatics

CAS No.	Compound	Result	RL	Units	Q
71-43-2	Benzene	ND	1.0	ug/l	
108-88-3	Toluene	ND	2.0	ug/l	
100-41-4	Ethylbenzene	ND	2.0	ug/l	
	m,p-Xylene	ND	2.0	ug/l	
95-47-6	o-Xylene	ND	2.0	ug/l	

CAS No.	Surrogate Recoveries	Run# 1	Run# 2	Limits
120-82-1	1,2,4-Trichlorobenzene	105%		60-140%

ND = Not detected  
 RL = Reporting Limit  
 E = Indicates value exceeds calibration range

J = Indicates an estimated value  
 B = Indicates analyte found in associated method blank  
 N = Indicates presumptive evidence of a compound

## Report of Analysis

<b>Client Sample ID:</b> DRAINAGE	<b>Date Sampled:</b> 04/13/10
<b>Lab Sample ID:</b> D12515-4	<b>Date Received:</b> 04/15/10
<b>Matrix:</b> AQ - Surface Water	<b>Percent Solids:</b> n/a
<b>Project:</b> Pure Energy Release Job#10-347	

### General Chemistry

Analyte	Result	RL	Units	DF	Analyzed	By	Method
Chloride	261	5.0	mg/l	10	04/15/10 16:27	GH	EPA 300/SW846 9056

RL = Reporting Limit

## Report of Analysis

<b>Client Sample ID:</b> COTTONWOOD GULCH UG	<b>Date Sampled:</b> 04/13/10
<b>Lab Sample ID:</b> D12515-5	<b>Date Received:</b> 04/15/10
<b>Matrix:</b> AQ - Surface Water	<b>Percent Solids:</b> n/a
<b>Method:</b> SW846 8021B	
<b>Project:</b> Pure Energy Release Job#10-347	

Run #	File ID	DF	Analyzed	By	Prep Date	Prep Batch	Analytical Batch
Run #1	TA6265.D	1	04/16/10	DG	n/a	n/a	GTA354
Run #2							

Run #	Purge Volume
Run #1	5.0 ml
Run #2	

**Purgeable Aromatics**

CAS No.	Compound	Result	RL	Units	Q
71-43-2	Benzene	ND	1.0	ug/l	
108-88-3	Toluene	ND	2.0	ug/l	
100-41-4	Ethylbenzene	ND	2.0	ug/l	
	m,p-Xylene	ND	2.0	ug/l	
95-47-6	o-Xylene	ND	2.0	ug/l	

CAS No.	Surrogate Recoveries	Run# 1	Run# 2	Limits
120-82-1	1,2,4-Trichlorobenzene	108%		60-140%

ND = Not detected  
 RL = Reporting Limit  
 E = Indicates value exceeds calibration range

J = Indicates an estimated value  
 B = Indicates analyte found in associated method blank  
 N = Indicates presumptive evidence of a compound

## Report of Analysis

<b>Client Sample ID:</b> COTTONWOOD GULCH UG	<b>Date Sampled:</b> 04/13/10
<b>Lab Sample ID:</b> D12515-5	<b>Date Received:</b> 04/15/10
<b>Matrix:</b> AQ - Surface Water	<b>Percent Solids:</b> n/a
<b>Project:</b> Pure Energy Release Job#10-347	

### General Chemistry

Analyte	Result	RL	Units	DF	Analyzed	By	Method
Chloride	26.6	2.5	mg/l	5	04/15/10 15:12	GH	EPA 300/SW846 9056

RL = Reporting Limit

## Report of Analysis

<b>Client Sample ID:</b>	COTTONWOOD GULCH CONFLUENCE		
<b>Lab Sample ID:</b>	D12515-6	<b>Date Sampled:</b>	04/13/10
<b>Matrix:</b>	AQ - Surface Water	<b>Date Received:</b>	04/15/10
<b>Method:</b>	SW846 8021B	<b>Percent Solids:</b>	n/a
<b>Project:</b>	Pure Energy Release Job#10-347		

	File ID	DF	Analyzed	By	Prep Date	Prep Batch	Analytical Batch
Run #1	TA6267.D	1	04/16/10	DG	n/a	n/a	GTA354
Run #2							

	Purge Volume
Run #1	5.0 ml
Run #2	

**Purgeable Aromatics**

CAS No.	Compound	Result	RL	Units	Q
71-43-2	Benzene	ND	1.0	ug/l	
108-88-3	Toluene	ND	2.0	ug/l	
100-41-4	Ethylbenzene	ND	2.0	ug/l	
	m,p-Xylene	ND	2.0	ug/l	
95-47-6	o-Xylene	ND	2.0	ug/l	

CAS No.	Surrogate Recoveries	Run# 1	Run# 2	Limits
120-82-1	1,2,4-Trichlorobenzene	109%		60-140%

ND = Not detected  
 RL = Reporting Limit  
 E = Indicates value exceeds calibration range

J = Indicates an estimated value  
 B = Indicates analyte found in associated method blank  
 N = Indicates presumptive evidence of a compound

## Report of Analysis

<b>Client Sample ID:</b>	COTTONWOOD GULCH CONFLUENCE		
<b>Lab Sample ID:</b>	D12515-6	<b>Date Sampled:</b>	04/13/10
<b>Matrix:</b>	AQ - Surface Water	<b>Date Received:</b>	04/15/10
<b>Project:</b>	Pure Energy Release Job#10-347	<b>Percent Solids:</b>	n/a

### General Chemistry

Analyte	Result	RL	Units	DF	Analyzed	By	Method
Chloride	26.4	2.5	mg/l	5	04/15/10 15:25	GH	EPA 300/SW846 9056

RL = Reporting Limit

## Report of Analysis

37  
3

<b>Client Sample ID:</b> COTTONWOOD GULCH DG1	<b>Date Sampled:</b> 04/13/10
<b>Lab Sample ID:</b> D12515-7	<b>Date Received:</b> 04/15/10
<b>Matrix:</b> AQ - Surface Water	<b>Percent Solids:</b> n/a
<b>Method:</b> SW846 8021B	
<b>Project:</b> Pure Energy Release Job#10-347	

	File ID	DF	Analyzed	By	Prep Date	Prep Batch	Analytical Batch
Run #1	TA6268.D	1	04/16/10	DG	n/a	n/a	GTA354
Run #2							

	Purge Volume
Run #1	5.0 ml
Run #2	

### Purgeable Aromatics

CAS No.	Compound	Result	RL	Units	Q
71-43-2	Benzene	ND	1.0	ug/l	
108-88-3	Toluene	ND	2.0	ug/l	
100-41-4	Ethylbenzene	ND	2.0	ug/l	
	m,p-Xylene	ND	2.0	ug/l	
95-47-6	o-Xylene	ND	2.0	ug/l	

CAS No.	Surrogate Recoveries	Run# 1	Run# 2	Limits
120-82-1	1,2,4-Trichlorobenzene	109%		60-140%

ND = Not detected  
 RL = Reporting Limit  
 E = Indicates value exceeds calibration range

J = Indicates an estimated value  
 B = Indicates analyte found in associated method blank  
 N = Indicates presumptive evidence of a compound

## Report of Analysis

<b>Client Sample ID:</b> COTTONWOOD GULCH DG1	<b>Date Sampled:</b> 04/13/10
<b>Lab Sample ID:</b> D12515-7	<b>Date Received:</b> 04/15/10
<b>Matrix:</b> AQ - Surface Water	<b>Percent Solids:</b> n/a
<b>Project:</b> Pure Energy Release Job#10-347	

### General Chemistry

Analyte	Result	RL	Units	DF	Analyzed	By	Method
Chloride	25.3	2.5	mg/l	5	04/15/10 15:49	GH	EPA 300/SW846 9056

---

RL = Reporting Limit

## Report of Analysis



<b>Client Sample ID:</b> COTTONWOOD GULCH DG2	<b>Date Sampled:</b> 04/13/10
<b>Lab Sample ID:</b> D12515-8	<b>Date Received:</b> 04/15/10
<b>Matrix:</b> AQ - Surface Water	<b>Percent Solids:</b> n/a
<b>Method:</b> SW846 8021B	
<b>Project:</b> Pure Energy Release Job#10-347	

Run #	File ID	DF	Analyzed	By	Prep Date	Prep Batch	Analytical Batch
Run #1	TA6269.D	1	04/16/10	DG	n/a	n/a	GTA354
Run #2							

Run #	Purge Volume
Run #1	5.0 ml
Run #2	

### Purgeable Aromatics

CAS No.	Compound	Result	RL	Units	Q
71-43-2	Benzene	ND	1.0	ug/l	
108-88-3	Toluene	ND	2.0	ug/l	
100-41-4	Ethylbenzene	ND	2.0	ug/l	
	m,p-Xylene	ND	2.0	ug/l	
95-47-6	o-Xylene	ND	2.0	ug/l	

CAS No.	Surrogate Recoveries	Run# 1	Run# 2	Limits
120-82-1	1,2,4-Trichlorobenzene	107%		60-140%

ND = Not detected  
 RL = Reporting Limit  
 E = Indicates value exceeds calibration range

J = Indicates an estimated value  
 B = Indicates analyte found in associated method blank  
 N = Indicates presumptive evidence of a compound

## Report of Analysis



<b>Client Sample ID:</b>	COTTONWOOD GULCH DG2	
<b>Lab Sample ID:</b>	D12515-8	<b>Date Sampled:</b> 04/13/10
<b>Matrix:</b>	AQ - Surface Water	<b>Date Received:</b> 04/15/10
<b>Project:</b>	Pure Energy Release Job#10-347	<b>Percent Solids:</b> n/a

### General Chemistry

Analyte	Result	RL	Units	DF	Analyzed	By	Method
Chloride	26.4	2.5	mg/l	5	04/15/10 16:02	GH	EPA 300/SW846 9056

RL = Reporting Limit

## Report of Analysis

3.9  
3

<b>Client Sample ID:</b> COTTONWOOD GULCH-RIVER	
<b>Lab Sample ID:</b> D12515-9	<b>Date Sampled:</b> 04/13/10
<b>Matrix:</b> AQ - Surface Water	<b>Date Received:</b> 04/15/10
<b>Method:</b> SW846 8021B	<b>Percent Solids:</b> n/a
<b>Project:</b> Pure Energy Release Job#10-347	

	File ID	DF	Analyzed	By	Prep Date	Prep Batch	Analytical Batch
Run #1	TA6270.D	1	04/16/10	DG	n/a	n/a	GTA354
Run #2							

	Purge Volume
Run #1	5.0 ml
Run #2	

### Purgeable Aromatics

CAS No.	Compound	Result	RL	Units	Q
71-43-2	Benzene	ND	1.0	ug/l	
108-88-3	Toluene	ND	2.0	ug/l	
100-41-4	Ethylbenzene	ND	2.0	ug/l	
	m,p-Xylene	ND	2.0	ug/l	
95-47-6	o-Xylene	ND	2.0	ug/l	

CAS No.	Surrogate Recoveries	Run# 1	Run# 2	Limits
120-82-1	1,2,4-Trichlorobenzene	113%		60-140%

ND = Not detected  
 RL = Reporting Limit  
 E = Indicates value exceeds calibration range

J = Indicates an estimated value  
 B = Indicates analyte found in associated method blank  
 N = Indicates presumptive evidence of a compound

## Report of Analysis

<b>Client Sample ID:</b>	COTTONWOOD GULCH-RIVER		
<b>Lab Sample ID:</b>	D12515-9	<b>Date Sampled:</b>	04/13/10
<b>Matrix:</b>	AQ - Surface Water	<b>Date Received:</b>	04/15/10
<b>Project:</b>	Pure Energy Release Job#10-347	<b>Percent Solids:</b>	n/a

### General Chemistry

Analyte	Result	RL	Units	DF	Analyzed	By	Method
Chloride	129	2.5	mg/l	5	04/15/10 16:15	GH	EPA 300/SW846 9056

RL = Reporting Limit



## Misc. Forms

---

### Custody Documents and Other Forms

---

Includes the following where applicable:

- Chain of Custody





# Accutest Laboratories Sample Receipt Summary

Accutest Job Number: D12515

Client: HRL

Immediate Client Services Action Required: No

Date / Time Received: 4/15/2010 9:20:00 AM

No. Coolers: 1

Client Service Action Required at Login: No

Project: PURE ENERGY

Airbill #'s: FEDX

<u>Cooler Security</u>	<u>Y</u>	<u>or</u>	<u>N</u>		<u>Y</u>	<u>or</u>	<u>N</u>
1. Custody Seals Present:	<input checked="" type="checkbox"/>		<input type="checkbox"/>	3. COC Present:	<input checked="" type="checkbox"/>		<input type="checkbox"/>
2. Custody Seals Intact:	<input checked="" type="checkbox"/>		<input type="checkbox"/>	4. Smpl Dates/Time OK	<input checked="" type="checkbox"/>		<input type="checkbox"/>

<u>Cooler Temperature</u>	<u>Y</u>	<u>or</u>	<u>N</u>
1. Temp criteria achieved:	<input checked="" type="checkbox"/>		<input type="checkbox"/>
2. Cooler temp verification:			Infrared gun
3. Cooler media:			Ice (bag)

<u>Quality Control Preservation</u>	<u>Y</u>	<u>or</u>	<u>N</u>	<u>N/A</u>
1. Trip Blank present / cooler:	<input type="checkbox"/>		<input type="checkbox"/>	
2. Trip Blank listed on COC:	<input type="checkbox"/>		<input type="checkbox"/>	
3. Samples preserved property:	<input checked="" type="checkbox"/>		<input type="checkbox"/>	
4. VOCs headspace free:	<input type="checkbox"/>		<input type="checkbox"/>	<input checked="" type="checkbox"/>

<u>Sample Integrity - Documentation</u>	<u>Y</u>	<u>or</u>	<u>N</u>
1. Sample labels present on bottles:	<input checked="" type="checkbox"/>		<input type="checkbox"/>
2. Container labeling complete:	<input checked="" type="checkbox"/>		<input type="checkbox"/>
3. Sample container label / COC agree:	<input checked="" type="checkbox"/>		<input type="checkbox"/>

<u>Sample Integrity - Condition</u>	<u>Y</u>	<u>or</u>	<u>N</u>
1. Sample recvd within HT:	<input checked="" type="checkbox"/>		<input type="checkbox"/>
2. All containers accounted for:	<input checked="" type="checkbox"/>		<input type="checkbox"/>
3. Condition of sample:			Intact

<u>Sample Integrity - Instructions</u>	<u>Y</u>	<u>or</u>	<u>N</u>	<u>N/A</u>
1. Analysis requested is clear:	<input checked="" type="checkbox"/>		<input type="checkbox"/>	
2. Bottles received for unspecified tests	<input type="checkbox"/>		<input checked="" type="checkbox"/>	
3. Sufficient volume rec'd for analysis:	<input checked="" type="checkbox"/>		<input type="checkbox"/>	
4. Compositing instructions clear:	<input type="checkbox"/>		<input type="checkbox"/>	<input checked="" type="checkbox"/>
5. Filtering instructions clear:	<input type="checkbox"/>		<input type="checkbox"/>	<input checked="" type="checkbox"/>

Comments

Empty box for comments.

Accutest Laboratories  
V:508.481.6200

495 Technology Center West, Bldg One  
F: 508.481.7753

Marlborough, MA  
www.accutest.com

4.1  
4



## GC Volatiles

5

## QC Data Summaries

---

Includes the following where applicable:

- Method Blank Summaries
- Blank Spike Summaries
- Matrix Spike and Duplicate Summaries

## Method Blank Summary

**Job Number:** D12515  
**Account:** HRLCCOGJ HRL Compliance Solutions  
**Project:** Pure Energy Release Job#10-347

Sample	File ID	DF	Analyzed	By	Prep Date	Prep Batch	Analytical Batch
GTA354-MB	TA6252.D	1	04/16/10	DG	n/a	n/a	GTA354

The QC reported here applies to the following samples:

Method: SW846 8021B

D12515-1, D12515-2, D12515-3, D12515-4, D12515-5, D12515-6, D12515-7, D12515-8, D12515-9

CAS No.	Compound	Result	RL	MDL	Units	Q
71-43-2	Benzene	ND	1.0	0.28	ug/l	
100-41-4	Ethylbenzene	ND	2.0	0.30	ug/l	
108-88-3	Toluene	ND	2.0	0.35	ug/l	
95-47-6	o-Xylene	ND	2.0	0.30	ug/l	
	m,p-Xylene	ND	2.0	0.30	ug/l	

CAS No.	Surrogate Recoveries	Limits
120-82-1	1,2,4-Trichlorobenzene	111% 60-140%

# Blank Spike Summary

**Job Number:** D12515  
**Account:** HRLCCOGJ HRL Compliance Solutions  
**Project:** Pure Energy Release Job#10-347

Sample	File ID	DF	Analyzed	By	Prep Date	Prep Batch	Analytical Batch
GTA354-BS	TA6253.D	1	04/16/10	DG	n/a	n/a	GTA354

The QC reported here applies to the following samples:

Method: SW846 8021B

D12515-1, D12515-2, D12515-3, D12515-4, D12515-5, D12515-6, D12515-7, D12515-8, D12515-9

CAS No.	Compound	Spike ug/l	BSP ug/l	BSP %	Limits
71-43-2	Benzene	27.2	26.8	99	70-130
100-41-4	Ethylbenzene	45.6	45.4	100	70-130
108-88-3	Toluene	212	198	94	70-130
95-47-6	o-Xylene	65.9	68.0	103	70-130
	m,p-Xylene	150	149	99	70-130

CAS No.	Surrogate Recoveries	BSP	Limits
120-82-1	1,2,4-Trichlorobenzene	132%	60-140%

# Matrix Spike/Matrix Spike Duplicate Summary

**Job Number:** D12515  
**Account:** HRLCCOGJ HRL Compliance Solutions  
**Project:** Pure Energy Release Job#10-347

Sample	File ID	DF	Analyzed	By	Prep Date	Prep Batch	Analytical Batch
D12516-1MS	TA6255.D	1	04/16/10	DG	n/a	n/a	GTA354
D12516-1MSD	TA6256.D	1	04/16/10	DG	n/a	n/a	GTA354
D12516-1	TA6254.D	1	04/16/10	DG	n/a	n/a	GTA354

The QC reported here applies to the following samples:

Method: SW846 8021B

D12515-1, D12515-2, D12515-3, D12515-4, D12515-5, D12515-6, D12515-7, D12515-8, D12515-9

CAS No.	Compound	D12516-1 ug/l	Spike Q ug/l	MS ug/l	MS %	MSD ug/l	MSD %	RPD	Limits Rec/RPD
71-43-2	Benzene	ND	27.2	25.1	92	27.0	99	7	70-130/30
100-41-4	Ethylbenzene	ND	45.6	42.7	94	45.7	100	7	62-130/30
108-88-3	Toluene	ND	212	187	88	201	95	7	70-130/30
95-47-6	o-Xylene	ND	65.9	63.6	97	68.3	104	7	63-130/30
	m,p-Xylene	ND	150	139	93	149	99	7	70-134/30

CAS No.	Surrogate Recoveries	MS	MSD	D12516-1	Limits
120-82-1	1,2,4-Trichlorobenzene	130%	128%	107%	60-140%

5.3.1  
5



## General Chemistry

### QC Data Summaries

Includes the following where applicable:

- Method Blank and Blank Spike Summaries
- Duplicate Summaries
- Matrix Spike Summaries

METHOD BLANK AND SPIKE RESULTS SUMMARY  
GENERAL CHEMISTRY

Login Number: D12515  
Account: HRLCCOGJ - HRL Compliance Solutions  
Project: Pure Energy Release Job#10-347

Analyte	Batch ID	RL	MB Result	Units	Spike Amount	BSP Result	BSP %Recov	QC Limits
Chloride	GP1788/GN3960	0.50	0.0	mg/l	20	18.4	92.0	90-110%

Associated Samples:

Batch GP1788: D12515-1, D12515-2, D12515-3, D12515-4, D12515-5, D12515-6, D12515-7, D12515-8, D12515-9

(\*) Outside of QC limits

6.1

6

MATRIX SPIKE RESULTS SUMMARY  
GENERAL CHEMISTRY

Login Number: D12515  
Account: HRLCCOGJ - HRL Compliance Solutions  
Project: Pure Energy Release Job#10-347

Analyte	Batch ID	QC Sample	Units	Original Result	Spike Amount	MS Result	%Rec	QC Limits
Chloride	GP1788/GN3960	D12515-4	mg/l	261	50	312	102.0	80-120%

Associated Samples:

Batch GP1788: D12515-1, D12515-2, D12515-3, D12515-4, D12515-5, D12515-6, D12515-7, D12515-8, D12515-9

(\*) Outside of QC limits

(N) Matrix Spike Rec. outside of QC limits

6.2

6

MATRIX SPIKE DUPLICATE RESULTS SUMMARY  
GENERAL CHEMISTRY

Login Number: D12515  
Account: HRLCCOGJ - HRL Compliance Solutions  
Project: Pure Energy Release Job#10-347

Analyte	Batch ID	QC Sample	Units	Original Result	Spike Amount	MSD Result	RPD	QC Limit
Chloride	GP1788/GN3960	D12515-4	mg/l	261	50	312	0.0	20%

Associated Samples:

Batch GP1788: D12515-1, D12515-2, D12515-3, D12515-4, D12515-5, D12515-6, D12515-7, D12515-8, D12515-9

(\*) Outside of QC limits

(N) Matrix Spike Rec. outside of QC limits

6.3

6