

Bayswater Exploration & Production, LLC

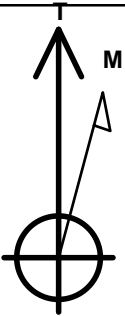
Well Name: **Sherley D-4-9HN**

Surface Location: Sherley Pad Sec.4-T5N-R65W
North American Datum 1983 , US State Plane 1983 , Colorado Northern Zone
Ground Elevation: 4641.2

+N/-S	+E/-W	Northing	Easting	Latitude	Longitude	Slot
0.0	0.0	1402163.07	3229608.52	40.434408	-104.675153	
		RKB - 22.5'	WELL @ 4663.7ft (RKB - 22.5')			

WELLBORE TARGET DETAILS

Name	TVD	+N/-S	+E/-W	Shape
SHL 501'FNL, 715'FWL, SEC.4	1.0	0.0	0.0	Point
BHL 470'FSL, 730'FWL, SEC.9	6939.0	-9710.8	-54.0	Point



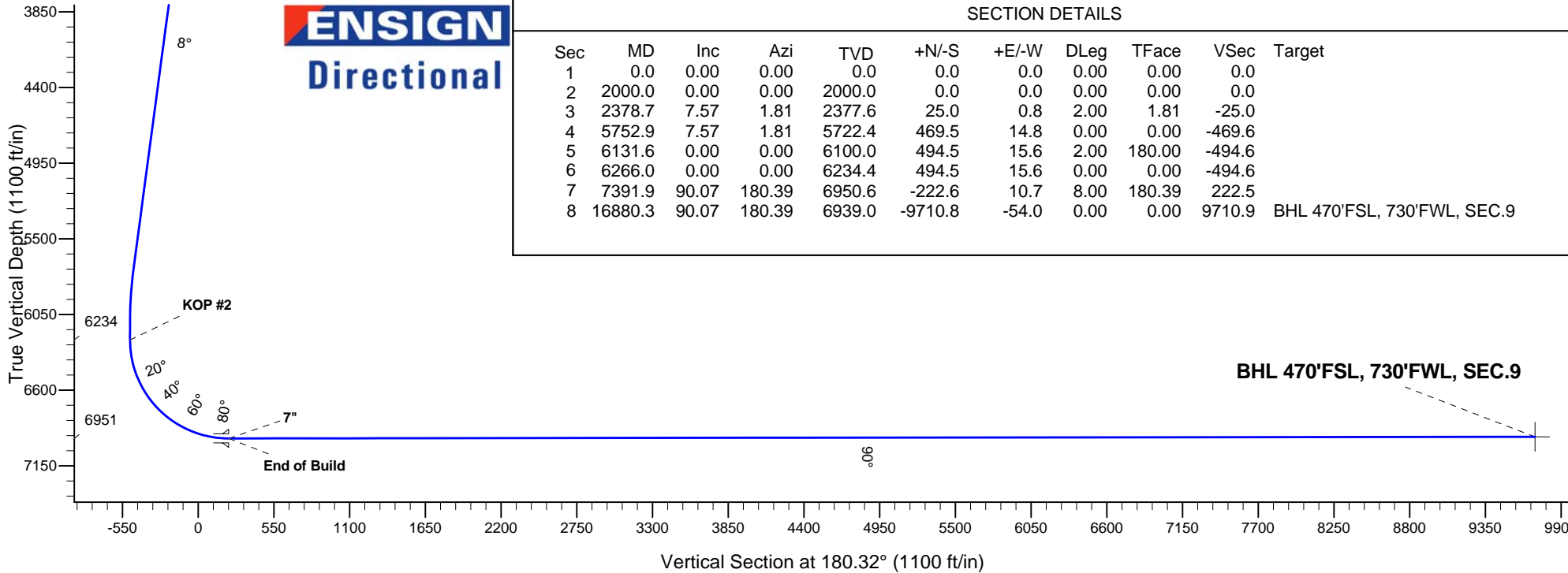
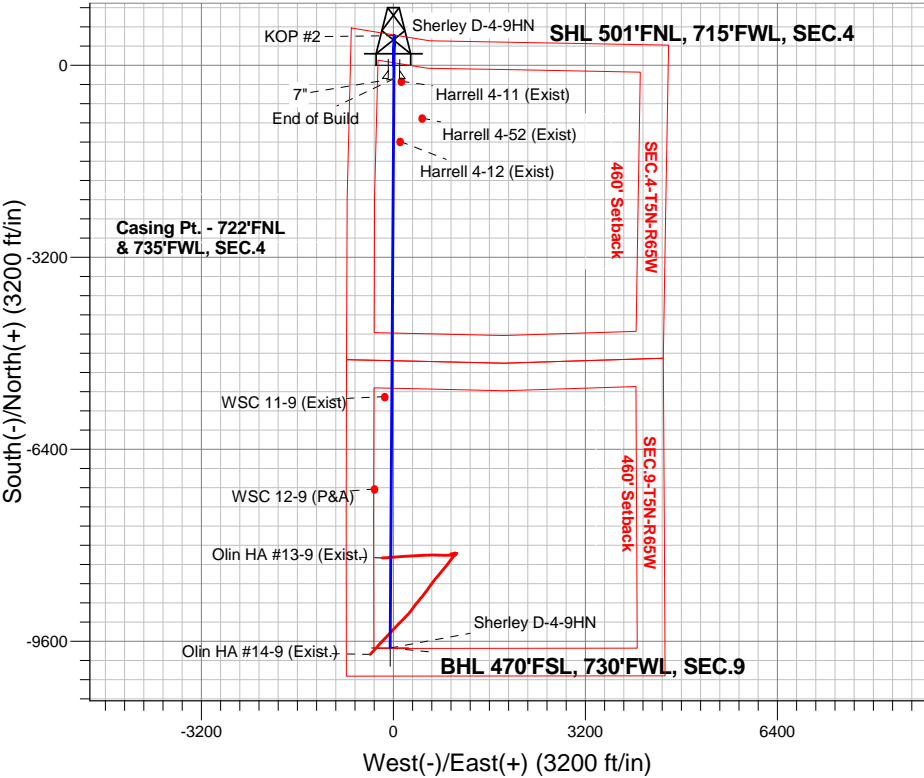
Azimuths to True North
Magnetic North: 8.37°

Magnetic Field
Strength: 52811.0nT
Dip Angle: 66.98°
Date: 10/7/2014
Model: IGRF2010

Sherley Pad Sec.4-T5N-R65W
Sherley D-4-9HN
Plan #1 (10-07-14)
12:06, October 14 2014

ANNOTATIONS

TVD	MD	Annotation
2000.0	2000.0	KOP #1
6234.4	6266.0	KOP #2
6950.6	7391.9	End of Build



ENSIGN
Directional

SECTION DETAILS

Sec	MD	Inc	Azi	TVD	+N/-S	+E/-W	DLeg	TFace	VSec	Target
1	0.0	0.00	0.00	0.0	0.0	0.0	0.00	0.00	0.0	
2	2000.0	0.00	0.00	2000.0	0.0	0.0	0.00	0.00	0.0	
3	2378.7	7.57	1.81	2377.6	25.0	0.8	2.00	1.81	-25.0	
4	5752.9	7.57	1.81	5722.4	469.5	14.8	0.00	0.00	-469.6	
5	6131.6	0.00	0.00	6100.0	494.5	15.6	2.00	180.00	-494.6	
6	6266.0	0.00	0.00	6234.4	494.5	15.6	0.00	0.00	-494.6	
7	7391.9	90.07	180.39	6950.6	-222.6	10.7	8.00	180.39	222.5	
8	16880.3	90.07	180.39	6939.0	-9710.8	-54.0	0.00	0.00	9710.9	BHL 470'FSL, 730'FWL, SEC.9



Bayswater Exploration & Production, LLC

SEC.4-T5N-R65W

Sherley Pad Sec.4-T5N-R65W

Sherley D-4-9HN

Wellbore #1

Plan: Plan #1 (10-07-14)

Standard Planning Report

14 October, 2014



BAYSWATER
EXPLORATION & PRODUCTION, LLC

Database:	Landmark	Local Co-ordinate Reference:	Well Sherley D-4-9HN
Company:	Bayswater Exploration & Production, LLC	TVD Reference:	WELL @ 4663.7ft (RKB - 22.5')
Project:	SEC.4-T5N-R65W	MD Reference:	WELL @ 4663.7ft (RKB - 22.5')
Site:	Sherley Pad Sec.4-T5N-R65W	North Reference:	True
Well:	Sherley D-4-9HN	Survey Calculation Method:	Minimum Curvature
Wellbore:	Wellbore #1		
Design:	Plan #1 (10-07-14)		

Project	SEC.4-T5N-R65W, Weld County, Colorado		
Map System:	US State Plane 1983	System Datum:	Mean Sea Level
Geo Datum:	North American Datum 1983		Using Well Reference Point
Map Zone:	Colorado Northern Zone		Using geodetic scale factor

Site						Sherley Pad Sec.4-T5N-R65W											
Site Position:						Northing:			1,402,207.92 ft			Latitude:			40.434531		
From:			Lat/Long			Easting:			3,229,612.00 ft			Longitude:			-104.675139		
Position Uncertainty:			0.0 ft			Slot Radius:			"			Grid Convergence:			0.53 °		

Well	Sherley D-4-9HN					
Well Position	+N/-S	-44.8 ft	Northing:	1,402,163.07 ft	Latitude:	40.434408
	+E/-W	-3.9 ft	Easting:	3,229,608.52 ft	Longitude:	-104.675153
Position Uncertainty		0.0 ft	Wellhead Elevation:	ft	Ground Level:	4,641.2 ft

Wellbore	Wellbore #1				
Magnetics	Model Name	Sample Date	Declination (°)	Dip Angle (°)	Field Strength (nT)
	IGRF2010	10/7/2014	8.37	66.98	52,811

Design	Plan #1 (10-07-14)			
Audit Notes:				
Version:	Phase:	PROTOTYPE	Tie On Depth:	0.0
Vertical Section:	Depth From (TVD) (ft)	+N/-S (ft)	+E/-W (ft)	Direction (°)
	0.0	0.0	0.0	180.32

Plan Sections										
Measured Depth (ft)	Inclination (°)	Azimuth (°)	Vertical Depth (ft)	+N/-S (ft)	+E/-W (ft)	Dogleg Rate (°/100ft)	Build Rate (°/100ft)	Turn Rate (°/100ft)	TFO (°)	Target
0.0	0.00	0.00	0.0	0.0	0.0	0.00	0.00	0.00	0.00	
2,000.0	0.00	0.00	2,000.0	0.0	0.0	0.00	0.00	0.00	0.00	
2,378.7	7.57	1.81	2,377.6	25.0	0.8	2.00	2.00	0.00	1.81	
5,752.9	7.57	1.81	5,722.4	469.5	14.8	0.00	0.00	0.00	0.00	
6,131.6	0.00	0.00	6,100.0	494.5	15.6	2.00	-2.00	0.00	180.00	
6,266.0	0.00	0.00	6,234.4	494.5	15.6	0.00	0.00	0.00	0.00	
7,391.9	90.07	180.39	6,950.6	-222.6	10.7	8.00	8.00	0.00	180.39	
16,880.3	90.07	180.39	6,939.0	-9,710.8	-54.0	0.00	0.00	0.00	0.00	BHL 470'FSL, 730'F

Database:	Landmark	Local Co-ordinate Reference:	Well Sherley D-4-9HN
Company:	Bayswater Exploration & Production, LLC	TVD Reference:	WELL @ 4663.7ft (RKB - 22.5')
Project:	SEC.4-T5N-R65W	MD Reference:	WELL @ 4663.7ft (RKB - 22.5')
Site:	Sherley Pad Sec.4-T5N-R65W	North Reference:	True
Well:	Sherley D-4-9HN	Survey Calculation Method:	Minimum Curvature
Wellbore:	Wellbore #1		
Design:	Plan #1 (10-07-14)		

Planned Survey									
Measured Depth (ft)	Inclination (°)	Azimuth (°)	Vertical Depth (ft)	+N/-S (ft)	+E/-W (ft)	Vertical Section (ft)	Dogleg Rate (°/100ft)	Build Rate (°/100ft)	Turn Rate (°/100ft)
0.0	0.00	0.00	0.0	0.0	0.0	0.0	0.00	0.00	0.00
1.0	0.00	0.00	1.0	0.0	0.0	0.0	0.00	0.00	0.00
SHL 501'FNL, 715'FWL, SEC.4									
100.0	0.00	0.00	100.0	0.0	0.0	0.0	0.00	0.00	0.00
200.0	0.00	0.00	200.0	0.0	0.0	0.0	0.00	0.00	0.00
300.0	0.00	0.00	300.0	0.0	0.0	0.0	0.00	0.00	0.00
400.0	0.00	0.00	400.0	0.0	0.0	0.0	0.00	0.00	0.00
500.0	0.00	0.00	500.0	0.0	0.0	0.0	0.00	0.00	0.00
600.0	0.00	0.00	600.0	0.0	0.0	0.0	0.00	0.00	0.00
700.0	0.00	0.00	700.0	0.0	0.0	0.0	0.00	0.00	0.00
800.0	0.00	0.00	800.0	0.0	0.0	0.0	0.00	0.00	0.00
900.0	0.00	0.00	900.0	0.0	0.0	0.0	0.00	0.00	0.00
1,000.0	0.00	0.00	1,000.0	0.0	0.0	0.0	0.00	0.00	0.00
1,100.0	0.00	0.00	1,100.0	0.0	0.0	0.0	0.00	0.00	0.00
1,200.0	0.00	0.00	1,200.0	0.0	0.0	0.0	0.00	0.00	0.00
1,300.0	0.00	0.00	1,300.0	0.0	0.0	0.0	0.00	0.00	0.00
1,400.0	0.00	0.00	1,400.0	0.0	0.0	0.0	0.00	0.00	0.00
1,500.0	0.00	0.00	1,500.0	0.0	0.0	0.0	0.00	0.00	0.00
1,600.0	0.00	0.00	1,600.0	0.0	0.0	0.0	0.00	0.00	0.00
1,700.0	0.00	0.00	1,700.0	0.0	0.0	0.0	0.00	0.00	0.00
1,800.0	0.00	0.00	1,800.0	0.0	0.0	0.0	0.00	0.00	0.00
1,900.0	0.00	0.00	1,900.0	0.0	0.0	0.0	0.00	0.00	0.00
2,000.0	0.00	0.00	2,000.0	0.0	0.0	0.0	0.00	0.00	0.00
KOP #1									
2,100.0	2.00	1.81	2,100.0	1.7	0.1	-1.7	2.00	2.00	0.00
2,200.0	4.00	1.81	2,199.8	7.0	0.2	-7.0	2.00	2.00	0.00
2,300.0	6.00	1.81	2,299.5	15.7	0.5	-15.7	2.00	2.00	0.00
2,378.7	7.57	1.81	2,377.6	25.0	0.8	-25.0	2.00	2.00	0.00
2,400.0	7.57	1.81	2,398.7	27.8	0.9	-27.8	0.00	0.00	0.00
2,500.0	7.57	1.81	2,497.8	41.0	1.3	-41.0	0.00	0.00	0.00
2,600.0	7.57	1.81	2,597.0	54.1	1.7	-54.1	0.00	0.00	0.00
2,700.0	7.57	1.81	2,696.1	67.3	2.1	-67.3	0.00	0.00	0.00
2,800.0	7.57	1.81	2,795.2	80.5	2.5	-80.5	0.00	0.00	0.00
2,900.0	7.57	1.81	2,894.3	93.7	3.0	-93.7	0.00	0.00	0.00
3,000.0	7.57	1.81	2,993.5	106.8	3.4	-106.9	0.00	0.00	0.00
3,100.0	7.57	1.81	3,092.6	120.0	3.8	-120.0	0.00	0.00	0.00
3,200.0	7.57	1.81	3,191.7	133.2	4.2	-133.2	0.00	0.00	0.00
3,300.0	7.57	1.81	3,290.9	146.4	4.6	-146.4	0.00	0.00	0.00
3,400.0	7.57	1.81	3,390.0	159.5	5.0	-159.6	0.00	0.00	0.00
3,500.0	7.57	1.81	3,489.1	172.7	5.4	-172.7	0.00	0.00	0.00
3,600.0	7.57	1.81	3,588.2	185.9	5.9	-185.9	0.00	0.00	0.00
3,700.0	7.57	1.81	3,687.4	199.1	6.3	-199.1	0.00	0.00	0.00
3,800.0	7.57	1.81	3,786.5	212.2	6.7	-212.3	0.00	0.00	0.00
3,900.0	7.57	1.81	3,885.6	225.4	7.1	-225.4	0.00	0.00	0.00
4,000.0	7.57	1.81	3,984.8	238.6	7.5	-238.6	0.00	0.00	0.00
4,100.0	7.57	1.81	4,083.9	251.8	7.9	-251.8	0.00	0.00	0.00
4,200.0	7.57	1.81	4,183.0	264.9	8.4	-265.0	0.00	0.00	0.00
4,300.0	7.57	1.81	4,282.1	278.1	8.8	-278.1	0.00	0.00	0.00
4,400.0	7.57	1.81	4,381.3	291.3	9.2	-291.3	0.00	0.00	0.00
4,500.0	7.57	1.81	4,480.4	304.5	9.6	-304.5	0.00	0.00	0.00
4,600.0	7.57	1.81	4,579.5	317.6	10.0	-317.7	0.00	0.00	0.00
4,700.0	7.57	1.81	4,678.6	330.8	10.4	-330.9	0.00	0.00	0.00
4,800.0	7.57	1.81	4,777.8	344.0	10.9	-344.0	0.00	0.00	0.00
4,900.0	7.57	1.81	4,876.9	357.1	11.3	-357.2	0.00	0.00	0.00

Database:	Landmark	Local Co-ordinate Reference:	Well Sherley D-4-9HN
Company:	Bayswater Exploration & Production, LLC	TVD Reference:	WELL @ 4663.7ft (RKB - 22.5')
Project:	SEC.4-T5N-R65W	MD Reference:	WELL @ 4663.7ft (RKB - 22.5')
Site:	Sherley Pad Sec.4-T5N-R65W	North Reference:	True
Well:	Sherley D-4-9HN	Survey Calculation Method:	Minimum Curvature
Wellbore:	Wellbore #1		
Design:	Plan #1 (10-07-14)		

Planned Survey									
Measured Depth (ft)	Inclination (°)	Azimuth (°)	Vertical Depth (ft)	+N/-S (ft)	+E/-W (ft)	Vertical Section (ft)	Dogleg Rate (°/100ft)	Build Rate (°/100ft)	Turn Rate (°/100ft)
5,000.0	7.57	1.81	4,976.0	370.3	11.7	-370.4	0.00	0.00	0.00
5,100.0	7.57	1.81	5,075.2	383.5	12.1	-383.6	0.00	0.00	0.00
5,200.0	7.57	1.81	5,174.3	396.7	12.5	-396.7	0.00	0.00	0.00
5,300.0	7.57	1.81	5,273.4	409.8	12.9	-409.9	0.00	0.00	0.00
5,400.0	7.57	1.81	5,372.5	423.0	13.3	-423.1	0.00	0.00	0.00
5,500.0	7.57	1.81	5,471.7	436.2	13.8	-436.3	0.00	0.00	0.00
5,600.0	7.57	1.81	5,570.8	449.4	14.2	-449.4	0.00	0.00	0.00
5,700.0	7.57	1.81	5,669.9	462.5	14.6	-462.6	0.00	0.00	0.00
5,752.9	7.57	1.81	5,722.4	469.5	14.8	-469.6	0.00	0.00	0.00
5,800.0	6.63	1.81	5,769.1	475.3	15.0	-475.4	2.00	-2.00	0.00
5,900.0	4.63	1.81	5,868.6	485.1	15.3	-485.2	2.00	-2.00	0.00
6,000.0	2.63	1.81	5,968.4	491.5	15.5	-491.6	2.00	-2.00	0.00
6,100.0	0.63	1.81	6,068.4	494.3	15.6	-494.4	2.00	-2.00	0.00
6,131.6	0.00	0.00	6,100.0	494.5	15.6	-494.6	2.00	-2.00	0.00
6,200.0	0.00	0.00	6,168.4	494.5	15.6	-494.6	0.00	0.00	0.00
6,266.0	0.00	0.00	6,234.4	494.5	15.6	-494.6	0.00	0.00	0.00
KOP #2									
6,300.0	2.72	180.39	6,268.3	493.7	15.6	-493.8	7.99	7.99	0.00
6,400.0	10.72	180.39	6,367.6	482.0	15.5	-482.1	8.00	8.00	0.00
6,500.0	18.72	180.39	6,464.2	456.6	15.3	-456.7	8.00	8.00	0.00
6,600.0	26.72	180.39	6,556.4	418.0	15.1	-418.1	8.00	8.00	0.00
6,700.0	34.72	180.39	6,642.3	367.0	14.7	-367.1	8.00	8.00	0.00
6,800.0	42.72	180.39	6,720.2	304.5	14.3	-304.6	8.00	8.00	0.00
6,900.0	50.72	180.39	6,788.8	231.8	13.8	-231.8	8.00	8.00	0.00
7,000.0	58.72	180.39	6,846.5	150.2	13.3	-150.3	8.00	8.00	0.00
7,100.0	66.72	180.39	6,892.3	61.4	12.6	-61.5	8.00	8.00	0.00
7,200.0	74.72	180.39	6,925.3	-32.9	12.0	32.8	8.00	8.00	0.00
7,300.0	82.72	180.39	6,944.8	-130.9	11.3	130.8	8.00	8.00	0.00
7,391.9	90.07	180.39	6,950.6	-222.5	10.7	222.5	8.00	8.00	0.00
End of Build - 7"									
7,400.0	90.07	180.39	6,950.6	-230.6	10.7	230.6	0.02	0.02	0.00
7,500.0	90.07	180.39	6,950.5	-330.6	10.0	330.6	0.00	0.00	0.00
7,600.0	90.07	180.39	6,950.3	-430.6	9.3	430.6	0.00	0.00	0.00
7,700.0	90.07	180.39	6,950.2	-530.6	8.6	530.6	0.00	0.00	0.00
7,800.0	90.07	180.39	6,950.1	-630.6	7.9	630.6	0.00	0.00	0.00
7,900.0	90.07	180.39	6,950.0	-730.6	7.2	730.6	0.00	0.00	0.00
8,000.0	90.07	180.39	6,949.8	-830.6	6.6	830.6	0.00	0.00	0.00
8,100.0	90.07	180.39	6,949.7	-930.6	5.9	930.6	0.00	0.00	0.00
8,200.0	90.07	180.39	6,949.6	-1,030.6	5.2	1,030.6	0.00	0.00	0.00
8,300.0	90.07	180.39	6,949.5	-1,130.6	4.5	1,130.6	0.00	0.00	0.00
8,400.0	90.07	180.39	6,949.4	-1,230.6	3.8	1,230.6	0.00	0.00	0.00
8,500.0	90.07	180.39	6,949.2	-1,330.6	3.1	1,330.6	0.00	0.00	0.00
8,600.0	90.07	180.39	6,949.1	-1,430.6	2.5	1,430.6	0.00	0.00	0.00
8,700.0	90.07	180.39	6,949.0	-1,530.6	1.8	1,530.6	0.00	0.00	0.00
8,800.0	90.07	180.39	6,948.9	-1,630.6	1.1	1,630.6	0.00	0.00	0.00
8,900.0	90.07	180.39	6,948.7	-1,730.6	0.4	1,730.6	0.00	0.00	0.00
9,000.0	90.07	180.39	6,948.6	-1,830.6	-0.3	1,830.6	0.00	0.00	0.00
9,100.0	90.07	180.39	6,948.5	-1,930.6	-0.9	1,930.6	0.00	0.00	0.00
9,200.0	90.07	180.39	6,948.4	-2,030.6	-1.6	2,030.6	0.00	0.00	0.00
9,300.0	90.07	180.39	6,948.3	-2,130.6	-2.3	2,130.6	0.00	0.00	0.00
9,400.0	90.07	180.39	6,948.1	-2,230.6	-3.0	2,230.6	0.00	0.00	0.00
9,500.0	90.07	180.39	6,948.0	-2,330.6	-3.7	2,330.6	0.00	0.00	0.00
9,600.0	90.07	180.39	6,947.9	-2,430.6	-4.4	2,430.6	0.00	0.00	0.00
9,700.0	90.07	180.39	6,947.8	-2,530.6	-5.0	2,530.6	0.00	0.00	0.00

Database:	Landmark	Local Co-ordinate Reference:	Well Sherley D-4-9HN
Company:	Bayswater Exploration & Production, LLC	TVD Reference:	WELL @ 4663.7ft (RKB - 22.5')
Project:	SEC.4-T5N-R65W	MD Reference:	WELL @ 4663.7ft (RKB - 22.5')
Site:	Sherley Pad Sec.4-T5N-R65W	North Reference:	True
Well:	Sherley D-4-9HN	Survey Calculation Method:	Minimum Curvature
Wellbore:	Wellbore #1		
Design:	Plan #1 (10-07-14)		

Planned Survey									
Measured Depth (ft)	Inclination (°)	Azimuth (°)	Vertical Depth (ft)	+N/-S (ft)	+E/-W (ft)	Vertical Section (ft)	Dogleg Rate (°/100ft)	Build Rate (°/100ft)	Turn Rate (°/100ft)
9,800.0	90.07	180.39	6,947.7	-2,630.6	-5.7	2,630.6	0.00	0.00	0.00
9,900.0	90.07	180.39	6,947.5	-2,730.6	-6.4	2,730.6	0.00	0.00	0.00
10,000.0	90.07	180.39	6,947.4	-2,830.6	-7.1	2,830.6	0.00	0.00	0.00
10,100.0	90.07	180.39	6,947.3	-2,930.6	-7.8	2,930.6	0.00	0.00	0.00
10,200.0	90.07	180.39	6,947.2	-3,030.6	-8.5	3,030.6	0.00	0.00	0.00
10,300.0	90.07	180.39	6,947.0	-3,130.6	-9.1	3,130.6	0.00	0.00	0.00
10,400.0	90.07	180.39	6,946.9	-3,230.6	-9.8	3,230.6	0.00	0.00	0.00
10,500.0	90.07	180.39	6,946.8	-3,330.6	-10.5	3,330.6	0.00	0.00	0.00
10,600.0	90.07	180.39	6,946.7	-3,430.6	-11.2	3,430.6	0.00	0.00	0.00
10,700.0	90.07	180.39	6,946.6	-3,530.6	-11.9	3,530.6	0.00	0.00	0.00
10,800.0	90.07	180.39	6,946.4	-3,630.6	-12.5	3,630.6	0.00	0.00	0.00
10,900.0	90.07	180.39	6,946.3	-3,730.6	-13.2	3,730.6	0.00	0.00	0.00
11,000.0	90.07	180.39	6,946.2	-3,830.6	-13.9	3,830.6	0.00	0.00	0.00
11,100.0	90.07	180.39	6,946.1	-3,930.6	-14.6	3,930.6	0.00	0.00	0.00
11,200.0	90.07	180.39	6,945.9	-4,030.6	-15.3	4,030.6	0.00	0.00	0.00
11,300.0	90.07	180.39	6,945.8	-4,130.5	-16.0	4,130.6	0.00	0.00	0.00
11,400.0	90.07	180.39	6,945.7	-4,230.5	-16.6	4,230.6	0.00	0.00	0.00
11,500.0	90.07	180.39	6,945.6	-4,330.5	-17.3	4,330.6	0.00	0.00	0.00
11,600.0	90.07	180.39	6,945.5	-4,430.5	-18.0	4,430.6	0.00	0.00	0.00
11,700.0	90.07	180.39	6,945.3	-4,530.5	-18.7	4,530.6	0.00	0.00	0.00
11,800.0	90.07	180.39	6,945.2	-4,630.5	-19.4	4,630.6	0.00	0.00	0.00
11,900.0	90.07	180.39	6,945.1	-4,730.5	-20.0	4,730.6	0.00	0.00	0.00
12,000.0	90.07	180.39	6,945.0	-4,830.5	-20.7	4,830.6	0.00	0.00	0.00
12,100.0	90.07	180.39	6,944.8	-4,930.5	-21.4	4,930.6	0.00	0.00	0.00
12,200.0	90.07	180.39	6,944.7	-5,030.5	-22.1	5,030.6	0.00	0.00	0.00
12,300.0	90.07	180.39	6,944.6	-5,130.5	-22.8	5,130.6	0.00	0.00	0.00
12,400.0	90.07	180.39	6,944.5	-5,230.5	-23.5	5,230.6	0.00	0.00	0.00
12,500.0	90.07	180.39	6,944.4	-5,330.5	-24.1	5,330.6	0.00	0.00	0.00
12,600.0	90.07	180.39	6,944.2	-5,430.5	-24.8	5,430.6	0.00	0.00	0.00
12,700.0	90.07	180.39	6,944.1	-5,530.5	-25.5	5,530.6	0.00	0.00	0.00
12,800.0	90.07	180.39	6,944.0	-5,630.5	-26.2	5,630.6	0.00	0.00	0.00
12,900.0	90.07	180.39	6,943.9	-5,730.5	-26.9	5,730.6	0.00	0.00	0.00
13,000.0	90.07	180.39	6,943.7	-5,830.5	-27.6	5,830.6	0.00	0.00	0.00
13,100.0	90.07	180.39	6,943.6	-5,930.5	-28.2	5,930.6	0.00	0.00	0.00
13,200.0	90.07	180.39	6,943.5	-6,030.5	-28.9	6,030.6	0.00	0.00	0.00
13,300.0	90.07	180.39	6,943.4	-6,130.5	-29.6	6,130.6	0.00	0.00	0.00
13,400.0	90.07	180.39	6,943.3	-6,230.5	-30.3	6,230.6	0.00	0.00	0.00
13,500.0	90.07	180.39	6,943.1	-6,330.5	-31.0	6,330.6	0.00	0.00	0.00
13,600.0	90.07	180.39	6,943.0	-6,430.5	-31.6	6,430.6	0.00	0.00	0.00
13,700.0	90.07	180.39	6,942.9	-6,530.5	-32.3	6,530.6	0.00	0.00	0.00
13,800.0	90.07	180.39	6,942.8	-6,630.5	-33.0	6,630.6	0.00	0.00	0.00
13,900.0	90.07	180.39	6,942.6	-6,730.5	-33.7	6,730.6	0.00	0.00	0.00
14,000.0	90.07	180.39	6,942.5	-6,830.5	-34.4	6,830.6	0.00	0.00	0.00
14,100.0	90.07	180.39	6,942.4	-6,930.5	-35.1	6,930.6	0.00	0.00	0.00
14,200.0	90.07	180.39	6,942.3	-7,030.5	-35.7	7,030.6	0.00	0.00	0.00
14,300.0	90.07	180.39	6,942.2	-7,130.5	-36.4	7,130.6	0.00	0.00	0.00
14,400.0	90.07	180.39	6,942.0	-7,230.5	-37.1	7,230.6	0.00	0.00	0.00
14,500.0	90.07	180.39	6,941.9	-7,330.5	-37.8	7,330.6	0.00	0.00	0.00
14,600.0	90.07	180.39	6,941.8	-7,430.5	-38.5	7,430.6	0.00	0.00	0.00
14,700.0	90.07	180.39	6,941.7	-7,530.5	-39.2	7,530.6	0.00	0.00	0.00
14,800.0	90.07	180.39	6,941.5	-7,630.5	-39.8	7,630.6	0.00	0.00	0.00
14,900.0	90.07	180.39	6,941.4	-7,730.5	-40.5	7,730.6	0.00	0.00	0.00
15,000.0	90.07	180.39	6,941.3	-7,830.5	-41.2	7,830.6	0.00	0.00	0.00
15,100.0	90.07	180.39	6,941.2	-7,930.5	-41.9	7,930.6	0.00	0.00	0.00

Database:	Landmark	Local Co-ordinate Reference:	Well Sherley D-4-9HN
Company:	Bayswater Exploration & Production, LLC	TVD Reference:	WELL @ 4663.7ft (RKB - 22.5')
Project:	SEC.4-T5N-R65W	MD Reference:	WELL @ 4663.7ft (RKB - 22.5')
Site:	Sherley Pad Sec.4-T5N-R65W	North Reference:	True
Well:	Sherley D-4-9HN	Survey Calculation Method:	Minimum Curvature
Wellbore:	Wellbore #1		
Design:	Plan #1 (10-07-14)		

Planned Survey										
Measured Depth (ft)	Inclination (°)	Azimuth (°)	Vertical Depth (ft)	+N/-S (ft)	+E/-W (ft)	Vertical Section (ft)	Dogleg Rate (°/100ft)	Build Rate (°/100ft)	Turn Rate (°/100ft)	
15,200.0	90.07	180.39	6,941.1	-8,030.5	-42.6	8,030.6	0.00	0.00	0.00	
15,300.0	90.07	180.39	6,940.9	-8,130.5	-43.2	8,130.6	0.00	0.00	0.00	
15,400.0	90.07	180.39	6,940.8	-8,230.4	-43.9	8,230.6	0.00	0.00	0.00	
15,500.0	90.07	180.39	6,940.7	-8,330.4	-44.6	8,330.6	0.00	0.00	0.00	
15,600.0	90.07	180.39	6,940.6	-8,430.4	-45.3	8,430.6	0.00	0.00	0.00	
15,700.0	90.07	180.39	6,940.4	-8,530.4	-46.0	8,530.6	0.00	0.00	0.00	
15,800.0	90.07	180.39	6,940.3	-8,630.4	-46.7	8,630.6	0.00	0.00	0.00	
15,900.0	90.07	180.39	6,940.2	-8,730.4	-47.3	8,730.6	0.00	0.00	0.00	
16,000.0	90.07	180.39	6,940.1	-8,830.4	-48.0	8,830.6	0.00	0.00	0.00	
16,100.0	90.07	180.39	6,940.0	-8,930.4	-48.7	8,930.6	0.00	0.00	0.00	
16,200.0	90.07	180.39	6,939.8	-9,030.4	-49.4	9,030.6	0.00	0.00	0.00	
16,300.0	90.07	180.39	6,939.7	-9,130.4	-50.1	9,130.6	0.00	0.00	0.00	
16,400.0	90.07	180.39	6,939.6	-9,230.4	-50.7	9,230.6	0.00	0.00	0.00	
16,500.0	90.07	180.39	6,939.5	-9,330.4	-51.4	9,330.6	0.00	0.00	0.00	
16,600.0	90.07	180.39	6,939.3	-9,430.4	-52.1	9,430.6	0.00	0.00	0.00	
16,700.0	90.07	180.39	6,939.2	-9,530.4	-52.8	9,530.6	0.00	0.00	0.00	
16,800.0	90.07	180.39	6,939.1	-9,630.4	-53.5	9,630.6	0.00	0.00	0.00	
16,880.3	90.07	180.39	6,939.0	-9,710.8	-54.0	9,710.9	0.00	0.00	0.00	
BHL 470°FSL, 730°FWL, SEC.9										

Targets										
Target Name	Dip Angle (°)	Dip Dir. (°)	TVD (ft)	+N/-S (ft)	+E/-W (ft)	Northing (ft)	Easting (ft)	Latitude	Longitude	
- hit/miss target										
- Shape										
SHL 501°FNL, 715°FW	0.00	0.00	1.0	0.0	0.0	1,402,163.08	3,229,608.52	40.434408	-104.675153	
- plan hits target center										
- Point										
BHL 470°FSL, 730°FW	0.00	0.00	6,939.0	-9,710.8	-54.0	1,392,452.61	3,229,644.82	40.407753	-104.675347	
- plan hits target center										
- Point										

Casing Points						
Measured Depth (ft)	Vertical Depth (ft)	Name	Casing Diameter (")	Hole Diameter (")		
7,391.9	6,950.6	7"	7	7-1/2		

Plan Annotations					
Measured Depth (ft)	Vertical Depth (ft)	Local Coordinates +N/-S (ft)	+E/-W (ft)	Comment	
2,000.0	2,000.0	0.0	0.0	KOP #1	
6,266.0	6,234.4	494.5	15.6	KOP #2	
7,391.9	6,950.6	-222.5	10.7	End of Build	