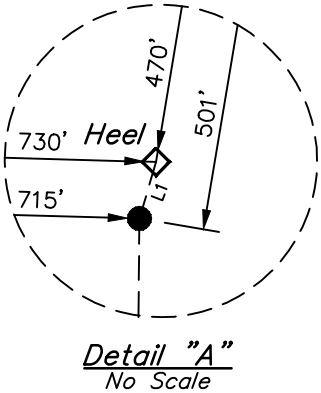


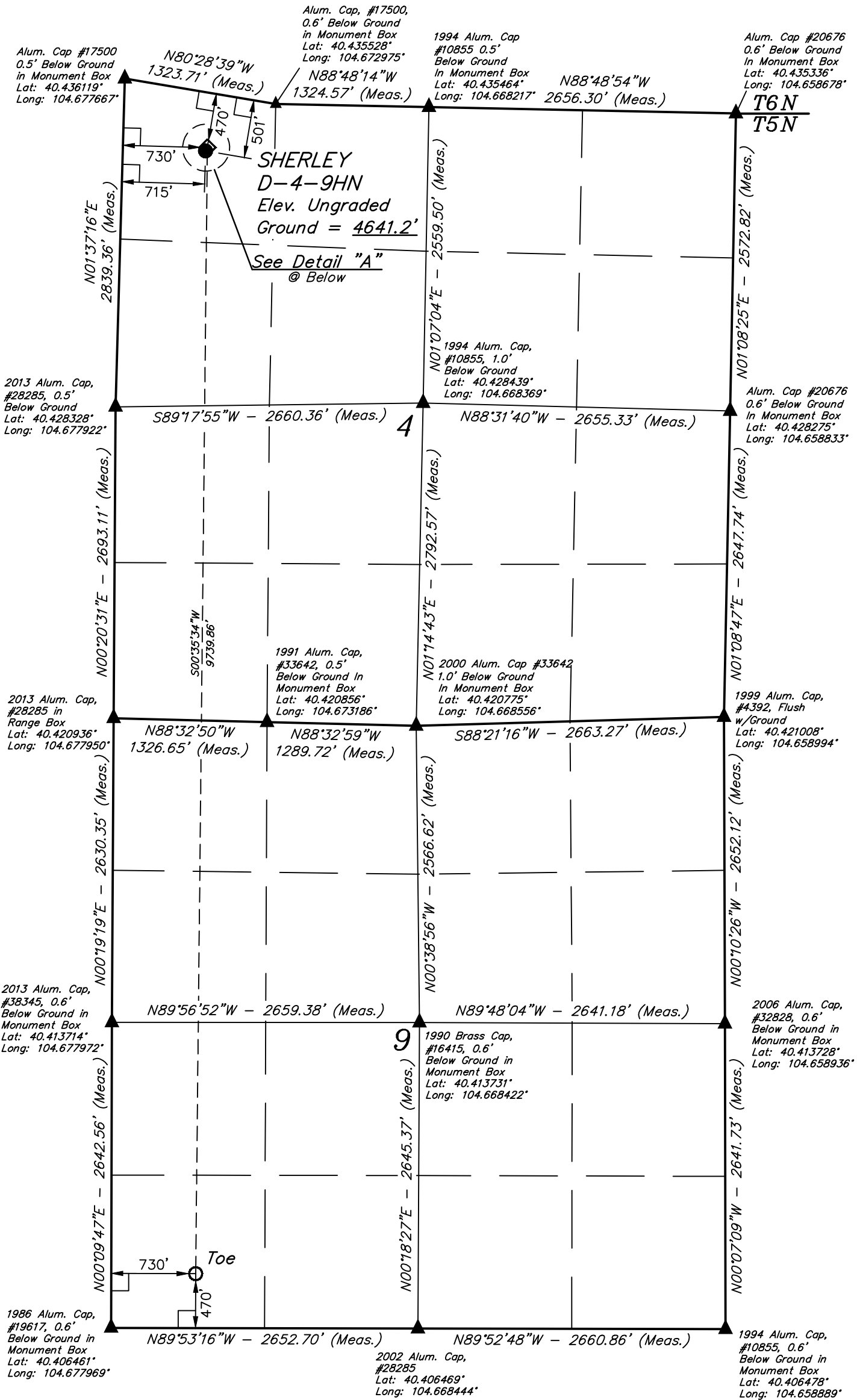
LEGEND:

- = 90° SYMBOL
- = PROPOSED WELLHEAD.
- = HEEL.
- = TOE.
- = SECTION CORNERS LOCATED.

LINE TABLE		
LINE	DIRECTION	LENGTH
L1	N27°56'41"E	33.02'



T5N, R65W, 6th P.M.



PDOP = 3.6



NAD 83 (TOE)	NAD 83 (HEEL)	NAD 83 (SURFACE LOCATION)
LATITUDE = 40°24'27.91" (40.407753)	LATITUDE = 40°26'04.16" (40.434489)	LATITUDE = 40°26'03.87" (40.434408)
LONGITUDE = 104°40'31.25" (104.675347)	LONGITUDE = 104°40'30.35" (104.675097)	LONGITUDE = 104°40'30.55" (104.675153)
NAD 27 (TOE)	NAD 27 (HEEL)	NAD 27 (SURFACE LOCATION)
LATITUDE = 40°24'27.98" (40.407772)	LATITUDE = 40°26'04.23" (40.434508)	LATITUDE = 40°26'03.94" (40.434428)
LONGITUDE = 104°40'29.38" (104.674828)	LONGITUDE = 104°40'28.48" (104.674578)	LONGITUDE = 104°40'28.68" (104.674633)

CERTIFICATE

THIS IS TO CERTIFY THAT THE ABOVE PLAT WAS PREPARED FROM FIELD NOTES OF ACTUAL SURVEYS MADE BY ME OR UNDER MY SUPERVISION, AND THAT THE SAME ARE TRUE AND CORRECT TO THE BEST OF MY KNOWLEDGE AND BELIEF.

REGISTERED LAND SURVEYOR
REGISTRATION NO. 28285
STATE OF COLORADO

BASIS OF BEARINGS
BASIS OF BEARINGS IS A G.P.S. OBSERVATION

BASIS OF ELEVATION

USGS COOPERATIVE BASE NETWORK CONTROL STATION,
DESIGNATION 'M414'. NGS DATA SHEET LISTS THE NAVD 88
ELEVATION AS BEING 4600.58 FEET

BAYSWATER EXPLORATION
& PRODUCTION, LLC

SHERLEY D-4-9HN
NW 1/4 NW 1/4, SECTION 4, T5N, R65W, 6th P.M.
WELD COUNTY, COLORADO

SURVEYED BY: DALLAS NIELSEN, C.J.	DATE: 08-08-14
DRAWN BY: J.W.	DATE DRAWN: 08-11-14
SCALE: 1" = 1000'	REVISED: 09-29-14

WELL LOCATION PLAT



UELS, LLC
Corporate Office * 85 South 200 East
Vernal, UT 84078 * (435) 789-1017

