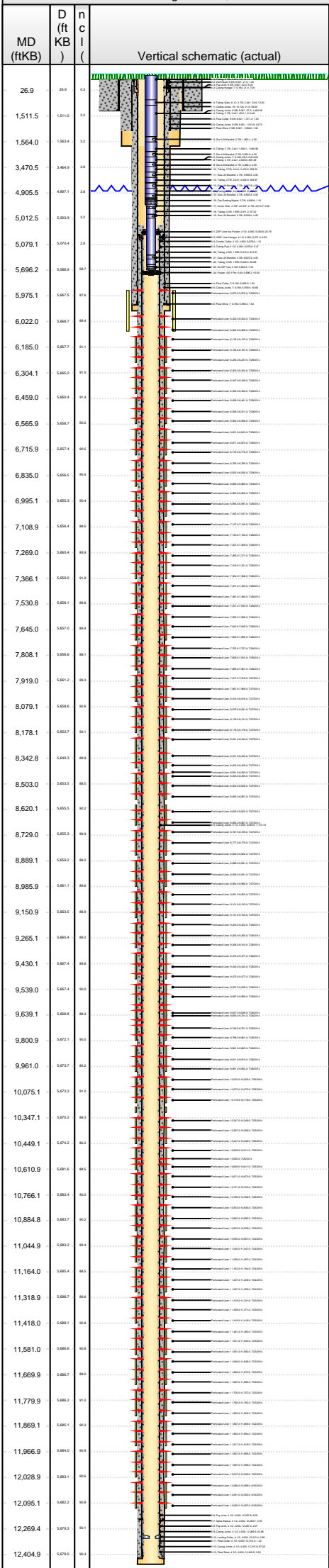




Lease Review
Well Name: RAZOR 26K-3508B

API Number 051233787600		WPC ID 1CO076987			Well Permit Number			Field Name DJ Horizontal Niobrara			County Weld		State CO		
Well Configuration Type Lateral/Horizontal				Orig KB Elv (ft) 4,759.50		Ground Elevation (ft) 4,738.50		Casing Flange Elevation (ft)		Tubing Head Elevation (ft)		Total Depth (ftKB) 12,415.0			
Original Spud Date 2/7/2014		Completion Date 7/30/2014		Asset Group Redtail			Responsible Engineer Andrew Fish			N/S Dist (ft) 2,374.0		N/S Ref FSL	E/W Dist (ft) 2,047.0		E/W Ref FWL
Lot	Quarter 1 NE	Quarter 2 SW	Quarter 3	Quarter 4	Section 26	Section Suffix	Section Type		Township 10	Township N/S Dir N	Range 58	Range E/W Dir W		Meridian	

Lateral/Horizontal - Original Hole, 12/9/2014 12:04:48 PM



Wellbore Sections

Section Des	Wellbore Name	Start Date	Size (in)	Act Top (ftKB)	Act Btm (ftKB)
Conductor	Original Hole	12/28/2013	24	21.0	80.0
Surface	Original Hole	2/7/2014	13 1/2	80.0	1,570.0
Intermediate	Original Hole	2/9/2014	8 3/4	1,570.0	5,995.0
Lateral	Original Hole	2/11/2014	6	5,995.0	12,415.0

Conductor Pipe, 80.0ftKB

OD (in)	Wt (lb/ft)	Grade	Top (ftKB)	Btm (ftKB)	Len (ft)	Item Des
16	75.00	J-55	21.0	80.0	59.00	Casing Joints

Surface Csg, 1,558.1ftKB

OD (in)	Wt (lb/ft)	Grade	Top (ftKB)	Btm (ftKB)	Len (ft)	Item Des
9 5/8	36.00	J-55	21.0	21.0	0.00	Landing Joint
9 5/8	36.00	J-55	21.0	22.0	1.00	Well Head
9 5/8	36.00	J-55	22.0	27.0	5.00	Pup Joint
9 5/8	36.00	J-55	27.0	1,511.4	1,484.38	Casing Joints
9 5/8	36.00	J-55	1,511.4	1,512.9	1.50	Float Collar
9 5/8	36.00	J-55	1,512.9	1,556.6	43.72	Casing Joints
9 5/8	36.00	J-55	1,556.6	1,558.1	1.50	Float Shoe

Intermediate Csg, 5,981.7ftKB

OD (in)	Wt (lb/ft)	Grade	Top (ftKB)	Btm (ftKB)	Len (ft)	Item Des
7	29.00	HCL-80	21.0	21.0	0.00	Landing Joint
7	29.00	HCL-80	21.0	28.0	7.00	Casing Hanger
7	29.00	HCL-80	28.0	5,938.0	5,910.02	Casing Joints
7	29.00	HCL-80	5,938.0	5,939.5	1.50	Float Collar
7	29.00	HCL-80	5,939.5	5,980.2	40.66	Casing Joints
7	29.00	HCL-80	5,980.2	5,981.7	1.50	Float Shoe

Liner, 12,405.3ftKB

OD (in)	Wt (lb/ft)	Grade	Top (ftKB)	Btm (ftKB)	Len (ft)	Item Des
4 1/2	11.60	L-80	5,050.6	5,071.4	20.79	ZXP Liner top Packer
4 1/2	11.60	L-80	5,071.4	5,078.0	6.65	HMC Liner Hanger
4 1/2	11.60	L-80	5,078.0	5,079.0	1.01	Combo Collar
4 1/2	11.60	L-80	5,079.0	5,084.5	5.47	Casing Pup
4 1/2	11.60	L-80	5,084.5	12,257.6	7,173.10	Casing Joints
4 1/2	11.60	L-80	12,257.6	12,263.7	6.05	Pup Joint
4 1/2	11.60	L-80	12,263.7	12,267.4	3.76	Alpha Sleeve
4 1/2	11.60	L-80	12,267.4	12,269.5	2.07	Pup Joint
4 1/2	11.60	L-80	12,269.5	12,313.4	43.88	Casing Joints
4 1/2	11.60	L-80	12,313.4	12,314.4	0.98	Landing Collar
4 1/2	11.60	L-80	12,314.4	12,315.8	1.42	Float Collar
4 1/2	11.60	L-80	12,315.8	12,402.8	87.00	Casing Joints
4 1/2	11.60	L-80	12,402.8	12,405.3	2.53	Float Shoe

Cement Stages

Des	Pump Start Date	Drill Out Date	Top (ftKB)	Btm (ftKB)	Top Meas Meth
Conductor Cement	12/28/2013		21.0	80.0	Returns to Surface
Surface Casing Cement			21.0	1,558.0	Returns to Surface
Intermediate Casing Cement	2/11/2014		21.0	5,981.5	Returns to Surface
Liner Cement	2/16/2014		5,050.3	12,405.0	Volume Calculations

Perforations

Type of Hole	Date	Top (ftKB)	Btm (ftKB)	Zone
Perforated Liner	7/29/2014	5,973.0	5,975.0	Niobrara, Original Hole
Perforated Liner	7/29/2014	6,020.0	6,022.0	Niobrara, Original Hole
Perforated Liner	7/29/2014	6,064.0	6,066.0	Niobrara, Original Hole
Perforated Liner	7/29/2014	6,135.0	6,137.0	Niobrara, Original Hole
Perforated Liner	7/29/2014	6,185.0	6,187.0	Niobrara, Original Hole
Perforated Liner	7/29/2014	6,235.0	6,237.0	Niobrara, Original Hole
Perforated Liner	7/29/2014	6,302.0	6,304.0	Niobrara, Original Hole
Perforated Liner	7/29/2014	6,347.0	6,349.0	Niobrara, Original Hole
Perforated Liner	7/29/2014	6,392.0	6,394.0	Niobrara, Original Hole
Perforated Liner	7/29/2014	6,459.0	6,461.0	Niobrara, Original Hole
Perforated Liner	7/29/2014	6,509.0	6,511.0	Niobrara, Original Hole
Perforated Liner	7/29/2014	6,564.0	6,566.0	Niobrara, Original Hole
Perforated Liner	7/29/2014	6,621.0	6,623.0	Niobrara, Original Hole
Perforated Liner	7/29/2014	6,671.0	6,673.0	Niobrara, Original Hole
Perforated Liner	7/29/2014	6,716.0	6,718.0	Niobrara, Original Hole
Perforated Liner	7/29/2014	6,783.0	6,785.0	Niobrara, Original Hole
Perforated Liner	7/29/2014	6,833.0	6,835.0	Niobrara, Original Hole
Perforated Liner	7/29/2014	6,883.0	6,885.0	Niobrara, Original Hole
Perforated Liner	7/29/2014	6,950.0	6,952.0	Niobrara, Original Hole
Perforated Liner	7/29/2014	6,995.0	6,997.0	Niobrara, Original Hole
Perforated Liner	7/29/2014	7,045.0	7,047.0	Niobrara, Original Hole
Perforated Liner	7/28/2014	7,107.0	7,109.0	Niobrara, Original Hole
Perforated Liner	7/28/2014	7,160.0	7,162.0	Niobrara, Original Hole

Page 2/7



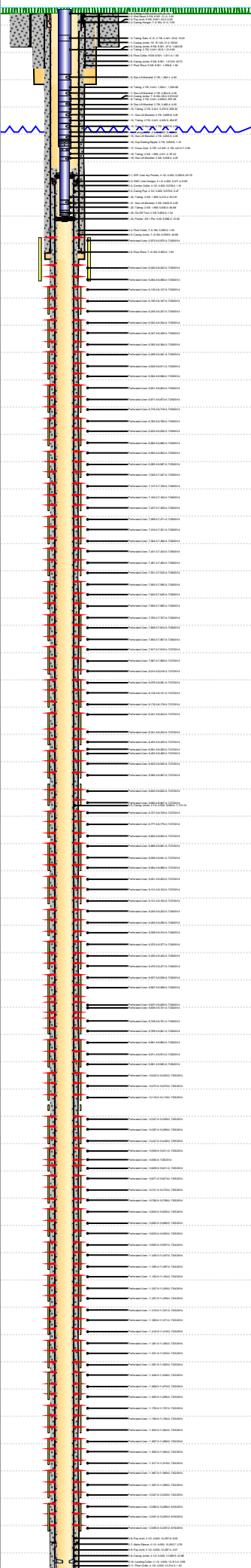
Lease Review
Well Name: RAZOR 26K-3508B

API Number 051233787600		WPC ID 1C0076987			Well Permit Number			Field Name DJ Horizontal Niobrara			County Weld		State CO		
Well Configuration Type Lateral/Horizontal				Orig KB Elv (ft) 4,759.50		Ground Elevation (ft) 4,738.50		Casing Flange Elevation (ft)		Tubing Head Elevation (ft)		Total Depth (ftKB) 12,415.0			
Original Spud Date 2/7/2014		Completion Date 7/30/2014		Asset Group Redtail			Responsible Engineer Andrew Fish			N/S Dist (ft) 2,374.0		N/S Ref FSL	E/W Dist (ft) 2,047.0		E/W Ref FWL
Lot	Quarter 1 NE	Quarter 2 SW	Quarter 3	Quarter 4	Section 26	Section Suffix	Section Type	Township 10	Township N/S Dir N	Range 58	Range E/W Dir W	Meridian			

Lateral/Horizontal - Original Hole, 12/9/2014 12:04:50 PM						Perforations									
MD (ftKB)	D (ftKB)	n (ft)	c (ft)	l (ft)	Vertical schematic (actual)	Logs	Type of Hole		Date	Top (ftKB)	Btm (ftKB)	Zone			
							Perforated Liner		7/24/2014	11,207.0	11,209.0	Niobrara, Original Hole			
							Perforated Liner		7/24/2014	11,257.0	11,259.0	Niobrara, Original Hole			
26.9	26.9	3.3					Perforated Liner		7/23/2014	11,319.0	11,321.0	Niobrara, Original Hole			
1,511.5	1,511.0	12.0					Perforated Liner		7/23/2014	11,369.0	11,371.0	Niobrara, Original Hole			
1,564.0	1,563.4	3.2					Perforated Liner		7/23/2014	11,416.0	11,418.0	Niobrara, Original Hole			
3,470.5	3,464.9	1.8					Perforated Liner		7/23/2014	11,481.0	11,483.0	Niobrara, Original Hole			
4,905.5	4,887.1	1.8					Perforated Liner		7/23/2014	11,531.0	11,533.0	Niobrara, Original Hole			
5,012.5	5,003.9	3.2					Perforated Liner		7/23/2014	11,581.0	11,583.0	Niobrara, Original Hole			
5,079.1	5,074.4	1.8					Perforated Liner		7/23/2014	11,646.0	11,648.0	Niobrara, Original Hole			
5,696.2	5,586.9	18.7					Perforated Liner		7/23/2014	11,668.0	11,670.0	Niobrara, Original Hole			
5,975.1	5,887.5	18.0					Perforated Liner		7/23/2014	11,693.0	11,695.0	Niobrara, Original Hole			
6,022.0	5,883.7	18.0					Perforated Liner		7/23/2014	11,755.0	11,757.0	Niobrara, Original Hole			
6,185.0	5,887.7	18.1					Perforated Liner		7/23/2014	11,780.0	11,782.0	Niobrara, Original Hole			
6,304.1	5,885.0	18.0					Perforated Liner		7/23/2014	11,800.0	11,802.0	Niobrara, Original Hole			
6,459.0	5,886.4	18.0					Perforated Liner		7/22/2014	11,867.0	11,869.0	Niobrara, Original Hole			
6,565.9	5,883.7	18.0					Perforated Liner		7/22/2014	11,892.0	11,894.0	Niobrara, Original Hole			
6,715.9	5,887.4	18.0					Perforated Liner		7/22/2014	11,917.0	11,919.0	Niobrara, Original Hole			
6,835.0	5,885.0	18.0					Perforated Liner		7/22/2014	11,967.0	11,969.0	Niobrara, Original Hole			
6,995.1	5,883.7	18.0					Perforated Liner		7/22/2014	11,997.0	11,999.0	Niobrara, Original Hole			
7,108.9	5,887.4	18.0					Perforated Liner		7/22/2014	12,027.0	12,029.0	Niobrara, Original Hole			
7,269.0	5,886.4	18.0					Perforated Liner		6/16/2014	12,086.0	12,088.0	Niobrara, Original Hole			
7,366.1	5,883.7	18.0					Perforated Liner		6/16/2014	12,091.0	12,093.0	Niobrara, Original Hole			
7,530.8	5,883.7	18.0					Perforated Liner		6/16/2014	12,095.0	12,097.0	Niobrara, Original Hole			
7,645.0	5,887.4	18.0					Sand Frac on 7/21/2014 06:00								
7,808.1	5,886.4	18.0					Comment						Min Top De...	Max Btm D...	Frac Length (ft)
7,919.0	5,883.7	18.0					Treatment End Date:7/29/2014; Number of staged intervals: 40; Number of perfs: 1404; Min frac gradient: 0.80 psi/ft; 78492 bbl YF822LpH CMHPG XL Ziroconate Gel, 89643 bbl Linear Gel, 48439 bbl Slickwater, 1002 bbl 15% HCL						5,973.0	12,097.0	6,124.00
8,079.1	5,883.7	18.0					Stim/Treat Fluids								
8,178.1	5,883.7	18.0					22#-24# YF822LpH CMHPG XL Zirconate Gel; Linear Ge, <fluidtyp>								
8,342.8	5,883.7	18.0					Proppant Frm (lb)	Total Clean Vol...	Avg Treat Rate...	Max Treat Rate...	Avg Treat Press...	P Max (psi)	Frac Gradient (p...		
8,503.0	5,883.7	18.0					5,468,627.0	124963.40	46.50	56.90	4,497.0	8,824.0	0.86		
8,620.1	5,883.7	18.0					Stim/Treat Stages								
8,729.0	5,883.7	18.0					Stg #	Start Date	Top Depth (ftKB)	Bottom Depth (ftKB)	Vol Clean Pump (bbl)	Vol Slurry (bbl)			
8,889.1	5,883.7	18.0					1	7/21/2014	12,086.0	12,097.0	1858.00	1859.00			
8,985.9	5,883.7	18.0					Additive	Type	Amount	Units	Sand Size				
9,150.9	5,883.7	18.0					Proppant	Jordan Unimin 16/30	732.0	lb	16/30				
9,265.1	5,883.7	18.0					Stg #	Start Date	Top Depth (ftKB)	Bottom Depth (ftKB)	Vol Clean Pump (bbl)	Vol Slurry (bbl)			
9,430.1	5,883.7	18.0					2	7/22/2014	11,967.0	12,029.0	3098.00	3214.00			
9,539.0	5,883.7	18.0					Additive	Type	Amount	Units	Sand Size				
9,639.1	5,883.7	18.0					Proppant	100 Mesh	3,267.0	lb	100 mesh white				
9,800.9	5,883.7	18.0					Additive	Type	Amount	Units	Sand Size				
9,961.0	5,883.7	18.0					Proppant	Jordan Unimin 16/30	104,018.0	lb	16/30				
10,075.1	5,883.7	18.0					Stg #	Start Date	Top Depth (ftKB)	Bottom Depth (ftKB)	Vol Clean Pump (bbl)	Vol Slurry (bbl)			
10,175.1	5,883.7	18.0					3	7/22/2014	11,867.0	11,919.0	3091.00	3204.00			
10,347.1	5,883.7	18.0					Additive	Type	Amount	Units	Sand Size				
10,449.1	5,883.7	18.0					Proppant	100 Mesh	3,150.0	lb	100 mesh white				
10,610.9	5,883.7	18.0					Additive	Type	Amount	Units	Sand Size				
10,766.1	5,883.7	18.0					Proppant	Jordan Unimin 16/30	99,355.0	lb	16/30				
10,884.8	5,883.7	18.0					Stg #	Start Date	Top Depth (ftKB)	Bottom Depth (ftKB)	Vol Clean Pump (bbl)	Vol Slurry (bbl)			
11,044.9	5,883.7	18.0					4	7/22/2014	11,755.0	11,802.0	3612.00	3777.00			
11,164.0	5,883.7	18.0					Additive	Type	Amount	Units	Sand Size				
11,318.9	5,883.7	18.0					Proppant	100 Mesh	3,116.0	lb	100 mesh white				
11,418.0	5,883.7	18.0					Additive	Type	Amount	Units	Sand Size				
11,581.0	5,883.7	18.0					Proppant	Jordan Unimin 16/30	150,286.0	lb	16/30				
11,669.9	5,883.7	18.0					Stg #	Start Date	Top Depth (ftKB)	Bottom Depth (ftKB)	Vol Clean Pump (bbl)	Vol Slurry (bbl)			
11,779.9	5,883.7	18.0					5	7/23/2014	11,646.0	11,695.0	3309.70	3475.00			
11,869.1	5,883.7	18.0					Additive	Type	Amount	Units	Sand Size				
11,966.9	5,883.7	18.0					Proppant	100 Mesh	2,750.0	lb	100 mesh white				
12,028.9	5,883.7	18.0					Additive	Type	Amount	Units	Sand Size				
12,095.1	5,883.7	18.0					Proppant	Jordan Unimin 16/30	150,134.0	lb	16/30				
12,269.4	5,883.7	18.0					Stg #	Start Date	Top Depth (ftKB)	Bottom Depth (ftKB)	Vol Clean Pump (bbl)	Vol Slurry (bbl)			
12,404.9	5,883.7	18.0					6	7/23/2014	11,481.0	11,583.0	3325.30	3494.00			
							Additive	Type	Amount	Units	Sand Size				
							Proppant	100 Mesh	2,982.0	lb	100 mesh white				
							Additive	Type	Amount	Units	Sand Size				
							Proppant	Jordan Unimin 16/30	153,555.0	lb	16/30				
							Stg #	Start Date	Top Depth (ftKB)	Bottom Depth (ftKB)	Vol Clean Pump (bbl)	Vol Slurry (bbl)			
							7	7/23/2014	11,319.0	11,418.0	3344.70	3511.00			
							Additive	Type	Amount	Units	Sand Size				
							Proppant	100 Mesh	3,034.0	lb	100 mesh white				
							Additive	Type	Amount	Units	Sand Size				
							Proppant	Jordan Unimin 16/30	150,898.0	lb	16/30				
							Stg #	Start Date	Top Depth (ftKB)	Bottom Depth (ftKB)	Vol Clean Pump (bbl)	Vol Slurry (bbl)			
							8	7/24/2014	11,162.0	11,259.0	3339.40	3508.00			
							Additive	Type	Amount	Units	Sand Size				
							Proppant	100 Mesh	2,408.0	lb	100 mesh white				
							Additive	Type	Amount	Units	Sand Size				
							Proppant	Jordan Unimin 16/30	153,989.0	lb	16/30				
							Stg #	Start Date	Top Depth (ftKB)	Bottom Depth (ftKB)	Vol Clean Pump (bbl)	Vol Slurry (bbl)			
							9	7/24/2014	10,955.0	11,097.0	3337.60	3496.00			
							Additive	Type	Amount	Units	Sand Size				
							Proppant	100 Mesh	2,606.0	lb	100 mesh white				
							Additive	Type	Amount	Units	Sand Size				
							Proppant	Jordan Unimin 16/30	150,910.0	lb	16/30				



Lease Review
Well Name: RAZOR 26K-3508B

API Number 051233787600		WPC ID 1C0076987		Well Permit Number		Field Name DJ Horizontal Niobrara		County Weld		State CO			
Well Configuration Type Lateral/Horizontal		Orig KB Elv (ft) 4,759.50		Ground Elevation (ft) 4,738.50		Casing Flange Elevation (ft)		Tubing Head Elevation (ft)		Total Depth (ftKB) 12,415.0			
Original Spud Date 2/7/2014		Completion Date 7/30/2014		Asset Group Redtail		Responsible Engineer Andrew Fish		N/S Dist (ft) 2,374.0		N/S Ref FSL		E/W Dist (ft) 2,047.0	E/W Ref FWL
Lot		Quarter 1 NE	Quarter 2 SW	Quarter 3	Quarter 4	Section 26	Section Suffix	Section Type	Township 10 N	Township N/S Dir	Range 58 W	Range E/W Dir	Meridian
Lateral/Horizontal - Original Hole, 12/9/2014 12:04:51 PM						Stim/Treat Stages							
MD (ftKB)	D (ft KB)	n (ft KB)	c (ft KB)	l (ft KB)	Vertical schematic (actual)	Logs	Stg #	Start Date	Top Depth (ftKB)	Bottom Depth (ftKB)	Vol Clean Pump (bbl)	Vol Slurry (bbl)	
							Additive Proppant	Type 100 Mesh	Amount 2,819.0	Units lb	Sand Size 100 mesh white		
26.9	26.9	3.3					Additive Proppant	Type Jordan Unimin 16/30	Amount 154,008.0	Units lb	Sand Size 16/30		
							Stg #	Start Date	Top Depth (ftKB)	Bottom Depth (ftKB)	Vol Clean Pump (bbl)	Vol Slurry (bbl)	
1,511.5	1,510.5	3.3					11	7/25/2014	10,671.0	10,768.0	3509.00	3670.00	
							Additive Proppant	Type 100 Mesh	Amount 3,014.0	Units lb	Sand Size 100 mesh white		
1,564.0	1,563.4	3.2					Additive Proppant	Type Jordan Unimin 16/30	Amount 146,171.0	Units lb	Sand Size 16/30		
							Stg #	Start Date	Top Depth (ftKB)	Bottom Depth (ftKB)	Vol Clean Pump (bbl)	Vol Slurry (bbl)	
3,470.5	3,469.5	3.8					12	7/25/2014	10,509.0	10,611.0	2982.00	3130.00	
							Additive Proppant	Type 100 Mesh	Amount 3,014.0	Units lb	Sand Size 100 mesh white		
4,905.5	4,904.7	3.8					Additive Proppant	Type Jordan Unimin 16/30	Amount 133,886.0	Units lb	Sand Size 16/30		
							Stg #	Start Date	Top Depth (ftKB)	Bottom Depth (ftKB)	Vol Clean Pump (bbl)	Vol Slurry (bbl)	
5,012.5	5,012.0	3.2					13	7/25/2014	10,347.0	10,449.0	3079.50	3184.00	
							Additive Proppant	Type 100 Mesh	Amount 3,062.0	Units lb	Sand Size 100 mesh white		
5,079.1	5,078.4	3.8					Additive Proppant	Type Jordan Unimin 16/30	Amount 93,782.0	Units lb	Sand Size 16/30		
							Stg #	Start Date	Top Depth (ftKB)	Bottom Depth (ftKB)	Vol Clean Pump (bbl)	Vol Slurry (bbl)	
5,696.2	5,695.8	18.7					14	7/25/2014	10,185.0	10,187.0	0.00	0.00	
							Additive Proppant	Type 100 Mesh	Amount 3,062.0	Units lb	Sand Size 100 mesh white		
5,975.1	5,974.5	18.6					Additive Proppant	Type Jordan Unimin 16/30	Amount 101,914.0	Units lb	Sand Size 16/30		
							Stg #	Start Date	Top Depth (ftKB)	Bottom Depth (ftKB)	Vol Clean Pump (bbl)	Vol Slurry (bbl)	
6,022.0	6,021.7	18.4					15	7/25/2014	10,023.0	10,118.0	3283.10	3449.00	
							Additive Proppant	Type 100 Mesh	Amount 3,041.0	Units lb	Sand Size 100 mesh white		
6,185.0	6,184.7	18.1					Additive Proppant	Type Jordan Unimin 16/30	Amount 150,047.0	Units lb	Sand Size 16/30		
							Stg #	Start Date	Top Depth (ftKB)	Bottom Depth (ftKB)	Vol Clean Pump (bbl)	Vol Slurry (bbl)	
6,304.1	6,303.8	18.5					16	7/25/2014	9,861.0	9,963.0	2998.40	3112.00	
							Additive Proppant	Type 100 Mesh	Amount 2,854.0	Units lb	Sand Size 100 mesh white		
6,459.0	6,458.4	18.6					Additive Proppant	Type Jordan Unimin 16/30	Amount 101,914.0	Units lb	Sand Size 16/30		
							Stg #	Start Date	Top Depth (ftKB)	Bottom Depth (ftKB)	Vol Clean Pump (bbl)	Vol Slurry (bbl)	
6,565.9	6,565.3	18.6					17	7/26/2014	9,637.0	9,801.0	2500.40	2551.00	
							Additive Proppant	Type 100 Mesh	Amount 2,795.0	Units lb	Sand Size 100 mesh white		
6,715.9	6,715.4	18.5					Additive Proppant	Type Jordan Unimin 16/30	Amount 44,022.0	Units lb	Sand Size 16/30		
							Stg #	Start Date	Top Depth (ftKB)	Bottom Depth (ftKB)	Vol Clean Pump (bbl)	Vol Slurry (bbl)	
6,835.0	6,834.7	18.4					18	7/26/2014	9,537.0	9,701.0	3287.00	3437.00	
							Additive Proppant	Type 100 Mesh	Amount 3,093.0	Units lb	Sand Size 100 mesh white		
6,995.1	6,994.8	18.4					Additive Proppant	Type Jordan Unimin 16/30	Amount 136,638.0	Units lb	Sand Size 16/30		
							Stg #	Start Date	Top Depth (ftKB)	Bottom Depth (ftKB)	Vol Clean Pump (bbl)	Vol Slurry (bbl)	
7,108.9	7,108.4	18.5					19	7/26/2014	9,375.0	9,477.0	3284.00	3453.00	
							Additive Proppant	Type 100 Mesh	Amount 2,987.0	Units lb	Sand Size 100 mesh white		
7,269.0	7,268.4	18.6					Additive Proppant	Type Jordan Unimin 16/30	Amount 153,902.0	Units lb	Sand Size 16/30		
							Stg #	Start Date	Top Depth (ftKB)	Bottom Depth (ftKB)	Vol Clean Pump (bbl)	Vol Slurry (bbl)	
7,366.1	7,365.8	18.6					20	7/26/2014	9,220.0	9,310.0	3282.00	3446.00	
							Additive Proppant	Type 100 Mesh	Amount 2,933.0	Units lb	Sand Size 100 mesh white		
7,530.8	7,530.4	18.4					Additive Proppant	Type Jordan Unimin 16/30	Amount 148,511.0	Units lb	Sand Size 16/30		
							Stg #	Start Date	Top Depth (ftKB)	Bottom Depth (ftKB)	Vol Clean Pump (bbl)	Vol Slurry (bbl)	
7,645.0	7,644.7	18.4					21	7/26/2014	9,051.0	9,153.0	3267.00	3430.00	
							Additive Proppant	Type 100 Mesh	Amount 2,953.0	Units lb	Sand Size 100 mesh white		
7,808.1	7,807.8	18.1					Additive Proppant	Type Jordan Unimin 16/30	Amount 148,709.0	Units lb	Sand Size 16/30		
							Stg #	Start Date	Top Depth (ftKB)	Bottom Depth (ftKB)	Vol Clean Pump (bbl)	Vol Slurry (bbl)	
7,919.0	7,918.7	18.5					22	7/26/2014	8,889.0	8,986.0	3351.60	3515.00	
							Additive Proppant	Type 100 Mesh	Amount 2,761.0	Units lb	Sand Size 100 mesh white		
8,079.1	8,078.8	18.6					Additive Proppant	Type Jordan Unimin 16/30	Amount 148,157.0	Units lb	Sand Size 16/30		
							Stg #	Start Date	Top Depth (ftKB)	Bottom Depth (ftKB)	Vol Clean Pump (bbl)	Vol Slurry (bbl)	
8,178.1	8,177.8	18.1					23	7/26/2014	8,727.0	8,822.0	3349.00	3512.00	
							Additive Proppant	Type 100 Mesh	Amount 2,760.0	Units lb	Sand Size 100 mesh white		
8,342.8	8,342.5	18.6					Additive Proppant	Type Jordan Unimin 16/30	Amount 148,485.0	Units lb	Sand Size 16/30		
							Stg #	Start Date	Top Depth (ftKB)	Bottom Depth (ftKB)	Vol Clean Pump (bbl)	Vol Slurry (bbl)	
8,342.8	8,342.5	18.6					24	7/27/2014	8,591.0	8,667.0	3269.00	3436.00	
							Additive Proppant	Type 100 Mesh	Amount 2,864.0	Units lb	Sand Size 100 mesh white		
8,503.0	8,502.7	18.5					Additive Proppant	Type Jordan Unimin 16/30	Amount 150,148.0	Units lb	Sand Size 16/30		
							Stg #	Start Date	Top Depth (ftKB)	Bottom Depth (ftKB)	Vol Clean Pump (bbl)	Vol Slurry (bbl)	
8,620.1	8,619.8	18.5					25	7/27/2014	8,453.0	8,567.0	3253.90	3416.00	
							Additive Proppant	Type 100 Mesh	Amount 3,001.0	Units lb	Sand Size 100 mesh white		
8,729.0	8,728.7	18.6					Additive Proppant	Type Jordan Unimin 16/30	Amount 148,381.0	Units lb	Sand Size 16/30		
							Stg #	Start Date	Top Depth (ftKB)	Bottom Depth (ftKB)	Vol Clean Pump (bbl)	Vol Slurry (bbl)	
8,889.1	8,888.8	18.3											
8,989.1	8,988.8	18.3											
9,150.9	9,150.6	18.6											
9,265.1	9,264.8	18.3											
9,430.1	9,429.8	18.6											
9,539.0	9,538.7	18.5											
9,639.1	9,638.8	18.3											
9,800.9	9,800.6	18.3											
9,961.0	9,960.7	18.3											
10,075.1	10,074.8	18.5											
10,347.1	10,346.8	18.3											
10,449.1	10,448.8	18.2											
10,610.9	10,610.6	18.3											
10,766.1	10,765.8	18.5											
10,884.8	10,884.5	18.2											
11,044.9	11,044.6	18.4											
11,164.0	11,163.7	18.3											
11,318.9	11,318.6	18.6											
11,418.0	11,417.7	18.4											
11,581.0	11,580.7	18.6											
11,669.9	11,669.6	18.3											
11,779.9	11,779.6	18.5											
11,869.1	11,868.8	18.3											
11,966.9	11,966.6	18.6											
12,028.9	12,028.6	18.6											
12,095.1	12,094.8	18.3											
12,269.4	12,269.1	18.1											
12,404.9	12,404.6	18.4											



Lease Review
Well Name: RAZOR 26K-3508B

API Number 051233787600		WPC ID 1C0076987		Well Permit Number		Field Name DJ Horizontal Niobrara		County Weld		State CO							
Well Configuration Type Lateral/Horizontal		Orig KB Elv (ft)		Ground Elevation (ft)		Casing Flange Elevation (ft)		Tubing Head Elevation (ft)		Total Depth (ftKB)							
Original Spud Date 2/7/2014		Completion Date 7/30/2014		Asset Group Redtail		Responsible Engineer Andrew Fish		N/S Dist (ft)		N/S Ref FSL	E/W Dist (ft) 2,047.0	E/W Ref FWL					
Lot		Quarter 1 NE	Quarter 2 SW	Quarter 3	Quarter 4	Section 26	Section Suffix	Section Type		Township 10 N	Township N/S Dir Range 58 W		Meridian				
Lateral/Horizontal - Original Hole, 12/9/2014 12:04:53 PM						Stim/Treat Stages											
MD (ftKB)	D (ft KB)	n ()	c ()	l ()	Vertical schematic (actual)	Logs	Stg #	Start Date		Top Depth (ftKB)		Bottom Depth (ftKB)		Vol Clean Pump (bbl)		Vol Slurry (bbl)	
							26	7/27/2014		8,241.0		8,405.0		3283.00		3449.00	
							Additive	Type		Amount		Units		Sand Size			
							Proppant	100 Mesh		2,976.0		lb		100 mesh white			
26.9	26.9	3.3					Additive	Type		Amount		Units		Sand Size			
							Proppant	Jordan Unimin 16/30		150,539.0		lb		16/30			
1,511.5	1,511.5	12.3					Stg #	Start Date		Top Depth (ftKB)		Bottom Depth (ftKB)		Vol Clean Pump (bbl)		Vol Slurry (bbl)	
							27	7/27/2014		8,079.0		8,178.0		3262.00		3429.00	
1,564.0	1,564.0	3.2					Additive	Type		Amount		Units		Sand Size			
							Proppant	100 Mesh		3,036.0		lb		100 mesh white			
3,470.5	3,470.5	3.8					Additive	Type		Amount		Units		Sand Size			
							Proppant	Jordan Unimin 16/30		151,107.0		lb		16/30			
4,905.5	4,905.5	3.8					Stg #	Start Date		Top Depth (ftKB)		Bottom Depth (ftKB)		Vol Clean Pump (bbl)		Vol Slurry (bbl)	
							28	7/27/2014		7,917.0		8,016.0		3259.00		3424.00	
5,012.5	5,012.5	3.2					Additive	Type		Amount		Units		Sand Size			
							Proppant	100 Mesh		2,871.0		lb		100 mesh white			
5,079.1	5,079.1	12.3					Additive	Type		Amount		Units		Sand Size			
							Proppant	Jordan Unimin 16/30		149,592.0		lb		16/30			
5,696.2	5,696.2	3.2					Stg #	Start Date		Top Depth (ftKB)		Bottom Depth (ftKB)		Vol Clean Pump (bbl)		Vol Slurry (bbl)	
							29	7/27/2014		7,755.0		7,857.0		3267.00		3431.00	
5,975.1	5,975.1	394.0					Additive	Type		Amount		Units		Sand Size			
							Proppant	100 Mesh		3,007.0		lb		100 mesh white			
6,022.0	6,022.0	394.0					Additive	Type		Amount		Units		Sand Size			
							Proppant	Jordan Unimin 16/30		150,087.0		lb		16/30			
6,185.0	6,185.0	394.0					Stg #	Start Date		Top Depth (ftKB)		Bottom Depth (ftKB)		Vol Clean Pump (bbl)		Vol Slurry (bbl)	
							30	7/27/2014		7,593.0		7,695.0		3221.80		3371.00	
6,304.1	6,304.1	394.0					Additive	Type		Amount		Units		Sand Size			
							Proppant	100 Mesh		2,856.0		lb		100 mesh white			
6,459.0	6,459.0	394.0					Additive	Type		Amount		Units		Sand Size			
							Proppant	Jordan Unimin 16/30		134,780.0		lb		16/30			
6,565.9	6,565.9	394.0					Stg #	Start Date		Top Depth (ftKB)		Bottom Depth (ftKB)		Vol Clean Pump (bbl)		Vol Slurry (bbl)	
							31	7/27/2014		7,593.0		7,695.0		3221.80		3371.00	
6,715.9	6,715.9	394.0					Additive	Type		Amount		Units		Sand Size			
							Proppant	100 Mesh		2,856.0		lb		100 mesh white			
6,835.0	6,835.0	394.0					Additive	Type		Amount		Units		Sand Size			
							Proppant	Jordan Unimin 16/30		134,780.0		lb		16/30			
6,995.1	6,995.1	394.0					Stg #	Start Date		Top Depth (ftKB)		Bottom Depth (ftKB)		Vol Clean Pump (bbl)		Vol Slurry (bbl)	
							31	7/28/2014		7,431.0		7,533.0		3222.00		3386.00	
7,108.9	7,108.9	394.0					Additive	Type		Amount		Units		Sand Size			
							Proppant	100 Mesh		3,108.0		lb		100 mesh white			
7,269.0	7,269.0	394.0					Additive	Type		Amount		Units		Sand Size			
							Proppant	Jordan Unimin 16/30		148,351.0		lb		16/30			
7,366.1	7,366.1	394.0					Stg #	Start Date		Top Depth (ftKB)		Bottom Depth (ftKB)		Vol Clean Pump (bbl)		Vol Slurry (bbl)	
							32	7/28/2014		7,269.0		7,366.0		3236.60		3403.00	
7,530.8	7,530.8	394.0					Additive	Type		Amount		Units		Sand Size			
							Proppant	100 Mesh		3,226.0		lb		100 mesh white			
7,645.0	7,645.0	394.0					Additive	Type		Amount		Units		Sand Size			
							Proppant	Jordan Unimin 16/30		150,854.0		lb		16/30			
7,808.1	7,808.1	394.0					Stg #	Start Date		Top Depth (ftKB)		Bottom Depth (ftKB)		Vol Clean Pump (bbl)		Vol Slurry (bbl)	
							33	7/28/2014		7,107.0		7,209.0		3255.00		3422.00	
8,342.8	8,342.8	394.0					Additive	Type		Amount		Units		Sand Size			
							Proppant	100 Mesh		3,134.0		lb		100 mesh white			
8,503.0	8,503.0	394.0					Additive	Type		Amount		Units		Sand Size			
							Proppant	Jordan Unimin 16/30		151,945.0		lb		16/30			
8,620.1	8,620.1	394.0					Stg #	Start Date		Top Depth (ftKB)		Bottom Depth (ftKB)		Vol Clean Pump (bbl)		Vol Slurry (bbl)	
							34	7/28/2014		6,950.0		7,047.0		3244.00		3411.00	
8,729.0	8,729.0	394.0					Additive	Type		Amount		Units		Sand Size			
							Proppant	100 Mesh		3,029.0		lb		100 mesh white			
8,899.1	8,899.1	394.0					Additive	Type		Amount		Units		Sand Size			
							Proppant	Jordan Unimin 16/30		150,977.0		lb		16/30			
8,985.9	8,985.9	394.0					Stg #	Start Date		Top Depth (ftKB)		Bottom Depth (ftKB)		Vol Clean Pump (bbl)		Vol Slurry (bbl)	
							35	7/28/2014		6,783.0		6,885.0		3243.00		3408.00	
9,150.9	9,150.9	394.0					Additive	Type		Amount		Units		Sand Size			
							Proppant	100 Mesh		3,060.0		lb		100 mesh white			
9,265.1	9,265.1	394.0					Additive	Type		Amount		Units		Sand Size			
							Proppant	Jordan Unimin 16/30		149,882.0		lb		16/30			
9,430.1	9,430.1	394.0					Stg #	Start Date		Top Depth (ftKB)		Bottom Depth (ftKB)		Vol Clean Pump (bbl)		Vol Slurry (bbl)	
							36	7/28/2014		6,621.0		6,718.0		3236.00		3402.00	
9,539.0	9,539.0	394.0					Additive	Type		Amount		Units		Sand Size			
							Proppant	100 Mesh		3,028.0		lb		100 mesh white			
9,639.1	9,639.1	394.0					Additive	Type		Amount		Units		Sand Size			
							Proppant	Jordan Unimin 16/30		150,429.0		lb		16/30			
9,961.0	9,961.0	394.0					Stg #	Start Date		Top Depth (ftKB)		Bottom Depth (ftKB)		Vol Clean Pump (bbl)		Vol Slurry (bbl)	
							37	7/29/2014		6,459.0		6,566.0		3238.00		3403.00	
10,075.1	10,075.1	394.0					Additive	Type		Amount		Units		Sand Size			
							Proppant	100 Mesh		3,163.0		lb		100 mesh white			
10,347.1	10,347.1	394.0					Additive	Type		Amount		Units		Sand Size			
							Proppant	Jordan Unimin 16/30		150,083.0		lb		16/30			
10,449.1	10,449.1	394.0					Stg #	Start Date		Top Depth (ftKB)		Bottom Depth (ftKB)		Vol Clean Pump (bbl)		Vol Slurry (bbl)	
							38	7/29/2014		6,302.0		6,394.0		3232.60		3398.00	
10,610.9	10,610.9	394.0					Additive	Type		Amount		Units		Sand Size			
							Proppant	100 Mesh		3,057.0		lb		100 mesh white			
10,766.1	10,766.1	394.0					Additive	Type		Amount		Units		Sand Size			
							Proppant	Jordan Unimin 16/30		150,262.0		lb		16/30			
10,884.8	10,884.8	394.0					Stg #	Start Date		Top Depth (ftKB)		Bottom Depth (ftKB)		Vol Clean Pump (bbl)		Vol Slurry (bbl)	
							39	7/29/2014		6,135.0		6,237.0		3213.00		3377.00	
11,044.9	11,044.9	394.0					Additive	Type		Amount		Units		Sand Size			
							Proppant	100 Mesh		3,477.0		lb		100 mesh white			
11,164.0	11,164.0	394.0					Additive	Type		Amount		Units		Sand Size			
							Proppant	Jordan Unimin 16/30		147,936.0		lb		16/30			
11,318.9	11,318.9	394.0					Stg #	Start Date		Top Depth (ftKB)		Bottom Depth (ftKB)		Vol Clean Pump (bbl)		Vol Slurry (bbl)	
							40	7/29/2014		5,973.0		6,066.0		3212.60		3376.00	
11,418.0	11,418.0	394.0					Additive	Type		Amount		Units		Sand Size			
							Proppant	100 Mesh		3,226.0		lb		100 mesh white			
11,581.0	11,581.0	394.0					Additive	Type		Amount		Units		Sand Size			
							Proppant	Jordan Unimin 16/30		147,647.0		lb		16/30			
11,669.9	11,669.9	394.0					Stg #	Start Date		Top Depth (ftKB)		Bottom Depth (ftKB)		Vol Clean Pump (bbl)		Vol Slurry (bbl)	
							40	7/29/2014		5,973.0		6,066.0		3212.60		3376.00	
11,779.9	11,779.9	394.0					Additive	Type		Amount		Units		Sand Size			
							Proppant	100 Mesh		3,226.0		lb		100 mesh white			
11,869.1	11,869.1	394.0					Additive	Type		Amount		Units		Sand Size			
							Proppant	Jordan Unimin 16/30		147,647.0		lb		16/30			
11,969.9	11,969.9	394.0					Stg #	Start Date		Top Depth (ftKB)		Bottom Depth (ftKB)		Vol Clean Pump (bbl)		Vol Slurry (bbl)	
							40	7/29/2014		5,973.0		6,066.0		3212.60		3376.00	
12,028.9	12,028.9	394.0					Additive	Type		Amount		Units		Sand Size			
							Proppant	100 Mesh		3,226.0		lb		100 mesh white			
12,095.1	12,095.1	394.0					Stg #	Start Date		Top Depth (ftKB)		Bottom Depth (ftKB)		Vol Clean Pump (bbl)		Vol Slurry (bbl)	
							40	7/29/2014		5,973.0		6,066.0		3212.60		3376.00	
12,269.4	12,269.4	394.0					Additive	Type		Amount		Units		Sand Size			
							Proppant	100 Mesh		3,226.0		lb		100 mesh white			
12,404.9	12,404.9	394.0					Stg #	Start Date		Top Depth (ftKB)		Bottom Depth (ftKB)		Vol Clean Pump (bbl)		Vol Slurry (bbl)	
							40	7/29/2014		5,973.0		6,066.0		3212.60		3376.00	
Tubing - Production set at 5,706.2ftKB on 9/8/2014 09:50																	
Set Depth (ftKB)							Comment					Run Date		Pull Date			



Lease Review
Well Name: RAZOR 26K-3508B

Number 051233787600		WPC ID 1CO076987		Well Permit Number		Field Name DJ Horizontal Niobrara		County Weld		State CO	
Well Configuration Type Lateral/Horizontal		Orig KB Elv (ft)		Ground Elevation (ft)		Casing Flange Elevation (ft)		Tubing Head Elevation (ft)		Total Depth (ftKB)	
Original Spud Date 2/7/2014		Completion Date 7/30/2014		Asset Group Redtail		Responsible Engineer Andrew Fish		N/S Dist (ft) 2,374.0		N/S Ref FSL	
								Range E/W Dir 58 W		E/W Dist (ft) 2,047.0	
										E/W Ref FWL	
Lot		Quarter 1 NE		Quarter 2 SW		Quarter 3		Quarter 4		Section	
										26	
										Section Suffix	
										Section Type	
										Township	
										10 N	
										Township N/S Dir	
										Range	
										Range E/W Dir	
										Meridian	
Lateral/Horizontal - Original Hole, 12/9/2014 12:04:54 PM						Item Des		OD (in)		ID (in)	
						Tubing		2 7/8		2.441	
						Tubing Subs 6', 6'		2 7/8		2.441	
						Tubing		2 7/8		2.441	
						Gas Lift Mandrel		2 7/8		2.441	
						Tubing		2 7/8		2.441	
						Gas Lift Mandrel		2 7/8		2.441	
						Tubing		2 7/8		2.441	
						Gas Lift Mandrel		2 7/8		2.441	
						Tubing		2 7/8		2.441	
						Gas Lift Mandrel		2 7/8		2.441	
						Tubing		2 7/8		2.441	
						Gas Lift Mandrel		2 7/8		2.441	
						Tubing		2 7/8		2.441	
						Gas Lift Mandrel		2 7/8		2.441	
						Cup Seating Nipple		2 7/8		2.441	
						Cross Over 2-7/8" x 2-3/8"		2 7/8		2.441	
						Tubing		2 3/8		1.995	
						Gas Lift Mandrel		2 3/8		1.995	
						Tubing		2 3/8		1.995	
						Gas Lift Mandrel		2 3/8		1.995	
						Tubing		2 3/8		1.995	
						On-Off Tool		2 3/8		1.995	
						Packer AS-1 Pkr		0.0		1.995	
						Rod Strings					
						<des> on <dtmrun>					
						Rod Description		Run Date		Pull Date	
						Item Des		OD (in)		Len (ft)	
										Top (ftKB)	
										Btm (ftKB)	
						Other Strings					
						Set Depth (ftKB)		Comment		Run Date	
										Pull Date	
						Item Des		OD (in)		Len (ft)	
										Top (ftKB)	
										Btm (ftKB)	
						Other In Hole					
						Des		OD (in)		Run Date	
										Pull Date	
										Top (ftKB)	
										Btm (ftKB)	
						CFP		4		7/29/2014	
										9/7/2014	
										6,101.0	
										6,103.0	
						CFP		4		7/29/2014	
										9/7/2014	
										6,267.0	
										6,269.0	
						CFP		4		7/29/2014	
										9/7/2014	
										6,422.0	
										6,424.0	
						CFP		4		7/29/2014	
										9/7/2014	
										6,591.0	
										6,593.0	
						CFP		4		7/29/2014	
										9/7/2014	
										6,753.0	
										6,755.0	
						CFP		4		7/29/2014	
										9/7/2014	
										6,915.0	
										6,917.0	
						CFP		4		7/29/2014	
										9/7/2014	
										7,086.0	
										7,088.0	
						CFP		4		7/29/2014	
										9/7/2014	
										7,250.0	
										7,252.0	
						CFP		4		7/29/2014	
										9/7/2014	
										7,394.0	
										7,396.0	
						CFP		4		7/29/2014	
										9/7/2014	
										7,563.0	
										7,565.0	
						CFP		4		7/28/2014	
										9/7/2014	
										7,730.0	
										7,732.0	
						CFP		4		7/28/2014	
										9/7/2014	
										7,870.0	
										7,872.0	
						CFP		4		7/28/2014	
										9/7/2014	
										8,042.0	
										8,044.0	
						CFP		4		7/28/2014	
										9/7/2014	
										8,208.0	
										8,210.0	
						CFP		4		7/28/2014	
										9/7/2014	
										8,373.0	
										8,375.0	
						CFP		4		7/28/2014	
										9/7/2014	
										8,540.0	
										8,542.0	
						CFP		4		7/28/2014	
										9/7/2014	
										8,684.0	
										8,686.0	
						CFP		4		7/27/2014	
										9/7/2014	
										8,850.0	
										8,852.0	
						CFP		4		7/27/2014	
										9/7/2014	
										9,016.0	
										9,018.0	
						CFP		4		7/27/2014	
										9/7/2014	
										9,183.0	
										9,185.0	
						CFP		4		7/27/2014	
										9/7/2014	
										9,328.0	
										9,330.0	
						CFP		4		7/27/2014	
										9/7/2014	
										9,494.0	
										9,496.0	
						CFP		4		7/26/2014	
										9/7/2014	
										9,664.0	
										9,666.0	
						CFP		4		7/26/2014	
										9/7/2014	
										9,831.0	
										9,833.0	
						CFP		4		7/26/2014	
										9/7/2014	
										9,995.0	
										9,997.0	
						CFP		4		7/26/2014	
										9/7/2014	
										10,148.0	
										10,150.0	
						CFP		4		7/26/2014	
										9/7/2014	
										10,486.0	
										10,488.0	
						CFP		4		7/26/2014	
										9/7/2014	
										10,630.0	
										10,632.0	
						CFP		4		7/25/2014	
										9/7/2014	
										10,796.0	
										10,798.0	
						CFP		4		7/25/2014	
										9/7/2014	
										10,965.0	
										10,967.0	
						CFP		4		7/24/2014	
										9/7/2014	
										11,127.0	
										11,129.0	
						CFP		4		7/24/2014	
										9/7/2014	
										11,280.0	
										11,282.0	
						CFP		4		7/24/2014	
										9/7/2014	
										11,451.0	
										11,453.0	
						CFP		4		7/23/2014	
										9/7/2014	
										11,613.0	
										11,615.0	
						CFP		4		7/23/2014	
										9/7/2014	
										11,720.0	
										11,722.0	
						CFP		4		7/23/2014	
										9/7/2014	
										11,837.0	
										11,839.0	
						CFP		4		7/22/2014	
										9/7/2014	
										11,949.0	
										11,951.0	



Lease Review
Well Name: RAZOR 26K-3508B

API Number 051233787600	WPC ID 1C0076987	Well Permit Number	Field Name DJ Horizontal Niobrara	County Weld	State CO
Well Configuration Type Lateral/Horizontal	Orig KB Elv (ft) 4,759.50	Ground Elevation (ft) 4,738.50	Casing Flange Elevation (ft)	Tubing Head Elevation (ft)	Total Depth (ft)KB 12,415.0
Original Spud Date 2/7/2014	Completion Date 7/30/2014	Asset Group Redtail	Responsible Engineer Andrew Fish	N/S Dist (ft) 2,374.0 N/S Ref FSL	E/W Dist (ft) 2,047.0 E/W Ref FWL
Lot	Quarter 1 NE	Quarter 2 SW	Quarter 3	Quarter 4	Section 26
			Section Suffix	Section Type	Township 10 N
					Range 58 W

Lateral/Horizontal - Original Hole, 12/9/2014 12:04:55 PM					Bottom Hole Cores				
MD (ftKB)	D (ft KB)	n c l ()	Vertical schematic (actual)	Logs	Date	Core #	Top (ftKB)	Btm (ftKB)	Recov (ft)
26.9	26.9	3.3		<p>Logs</p>					
1,511.5	1,511.5	12.3							
1,564.0	1,564.0	12.2							
3,470.5	3,470.5	18.8							
4,905.5	4,905.5	18.8							
5,012.5	5,012.5	12.3							
5,079.1	5,079.1	12.3							
5,696.2	5,696.2	18.7							
5,975.1	5,975.1	18.6							
6,022.0	6,022.0	18.6							
6,185.0	6,185.0	18.1							
6,304.1	6,304.1	18.5							
6,459.0	6,459.0	18.6							
6,565.9	6,565.9	18.6							
6,715.9	6,715.9	18.6							
6,835.0	6,835.0	18.4							
6,995.1	6,995.1	18.6							
7,108.9	7,108.9	18.6							
7,269.0	7,269.0	18.8							
7,366.1	7,366.1	18.6							
7,530.8	7,530.8	18.6							
7,645.0	7,645.0	18.4							
7,808.1	7,808.1	18.1							
7,919.0	7,919.0	18.3							
8,079.1	8,079.1	18.6							
8,178.1	8,178.1	18.1							
8,342.8	8,342.8	18.8							
8,503.0	8,503.0	18.6							
8,620.1	8,620.1	18.6							
8,729.0	8,729.0	18.8							
8,889.1	8,889.1	18.3							
8,985.9	8,985.9	18.6							
9,150.9	9,150.9	18.8							
9,265.1	9,265.1	18.2							
9,430.1	9,430.1	18.3							
9,539.0	9,539.0	18.6							
9,639.1	9,639.1	18.3							
9,800.9	9,800.9	18.6							
9,961.0	9,961.0	18.3							
10,075.1	10,075.1	18.6							
10,347.1	10,347.1	18.3							
10,449.1	10,449.1	18.3							
10,610.9	10,610.9	18.6							
10,766.1	10,766.1	18.6							
10,884.8	10,884.8	18.2							
11,044.9	11,044.9	18.4							
11,164.0	11,164.0	18.6							
11,318.9	11,318.9	18.6							
11,418.0	11,418.0	18.8							
11,581.0	11,581.0	18.3							
11,669.9	11,669.9	18.6							
11,779.9	11,779.9	18.6							
11,869.1	11,869.1	18.3							
11,966.9	11,966.9	18.3							
12,028.9	12,028.9	18.6							
12,095.1	12,095.1	18.8							
12,269.4	12,269.4	18.1							
12,404.9	12,404.9	18.6							