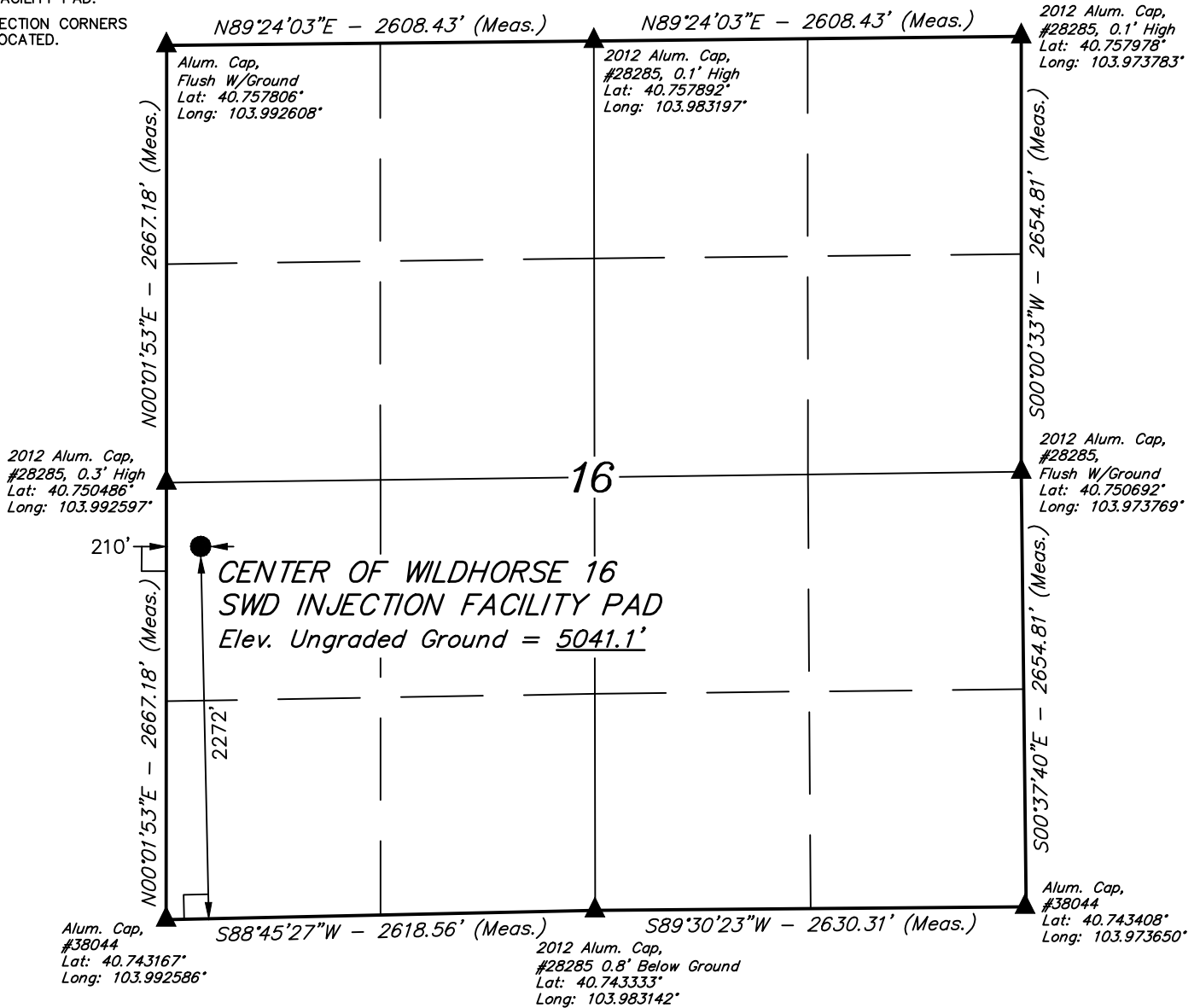


LEGEND:

- └─ = 90° SYMBOL
- = CENTER OF SWD INJECTION FACILITY PAD.
- ▲ = SECTION CORNERS LOCATED.

T9N, R59W, 6th P.M.



PDOP = 1.6

NAD 83 (CENTER OF WILDHORSE 16 SWD INJECTION FACILITY PAD)
LATITUDE = 40°44'57.90" (40.749417)
LONGITUDE = 103°59'30.62" (103.991839)
NAD 27 (CENTER OF WILDHORSE 16 SWD INJECTION FACILITY PAD)
LATITUDE = 40°44'57.95" (40.749431)
LONGITUDE = 103°59'28.80" (103.991333)

CERTIFICATE

THIS IS TO CERTIFY THAT THE ABOVE PLAT WAS PREPARED FROM FIELD NOTES OF ACTUAL SURVEYS MADE BY ME OR UNDER MY SUPERVISION AND THAT THE SAME ARE TRUE AND CORRECT TO THE BEST OF MY KNOWLEDGE AND BELIEF.

REGISTERED LAND SURVEYOR
 REGISTRATION NO. 28285
 STATE OF COLORADO

BASIS OF BEARINGS
BASIS OF BEARINGS IS A G.P.S. OBSERVATION

BASIS OF ELEVATION
SPOT ELEVATION LOCATED AT THE NORTHEAST CORNER OF SECTION 15, T9N, R58W, 6th P.M. TAKEN FROM THE GATEHOOK SPRING, QUADRANGLE, COLORADO, WELD COUNTY, 7.5 MINUTE QUAD (TOPOGRAPHIC MAP) PUBLISHED BY THE UNITED STATES DEPARTMENT OF THE INTERIOR, GEOLOGICAL SURVEY. SAID ELEVATION IS MARKED AS BEING 4679 FEET.

WHITING OIL & GAS CORP.

**WILDHORSE 16 SWD INJECTION FACILITY
NW 1/4 SW 1/4, SECTION 16, T9N, R59W, 6th P.M.
WELD COUNTY, COLORADO**

SURVEYED BY: DALLAS NIELSON, J.S.	DATE: 09-22-14
DRAWN BY: J.S.	DATE DRAWN: 09-24-14
SCALE: 1" = 1000'	REVISED: 10-06-14 J.W.

LOCATION PLAT



UELS, LLC
Corporate Office * 85 South 200 East
Vernal, UT 84078 * (435) 789-1017

