

1801 Broadway
Suite 500
Denver, Colorado 80202



Callie Fiddes
Regulatory Technician
Tel: 303.398.0550
E-mail: cfiddes@gwogco.com

September 4, 2014

Colorado Oil and Gas Conservation Commission
1120 Lincoln Street, Suite 801
Denver, Colorado 80203

RE: **Proposed Wellbore Spacing Unit**
Kodak South FD 27-382HN

Niobrara New Drill
Township 6 North, Range 67 West, 6th P.M.
Section 26
Weld County, Colorado

Dear Director:

Great Western Operating Company, LLC is planning to drill the above captioned well in accordance with the provisions of COGCC Rule 318A.e.

Great Western proposed wellbore spacing unit consists of:

- **S2SW Sec 26 N2NW Sec 35 S2S2 Sec 27 N2N2 Sec 34**
- **480 acres**

The 30 day notification time has passed and we have not received any objections to such well locations or proposed spacing unit, therefore Great Western hereby requests the Director to approve the above mentioned well. Great Western Operating Company, LLC respectfully requests that the COGCC review the enclosed map illustrating the proposed wellbore spacing unit.

Respectfully,

Callie Fiddes

Callie Fiddes
Regulatory Technician
Great Western Operating Company, LLC

T6N, R67W, 6th P.M.

GREAT WESTERN OIL & GAS COMPANY

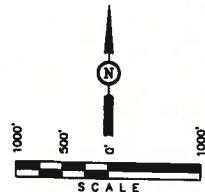
Well location, KODAK SOUTH FD 27-382HN, located as shown in the SE 1/4 SW 1/4 of Section 26, T6N, R67W, 6th P.M., Weld County, Colorado.

BASIS OF ELEVATION

USGS COOPERATIVE BASE NETWORK CONTROL STATION, DESIGNATION 'VERMILYEA'. NGS DATA SHEET LISTS THE NAVD 88 ELEVATION AS BEING 5026 FEET

BASIS OF BEARINGS

BASIS OF BEARINGS IS A G.P.S. OBSERVATION.

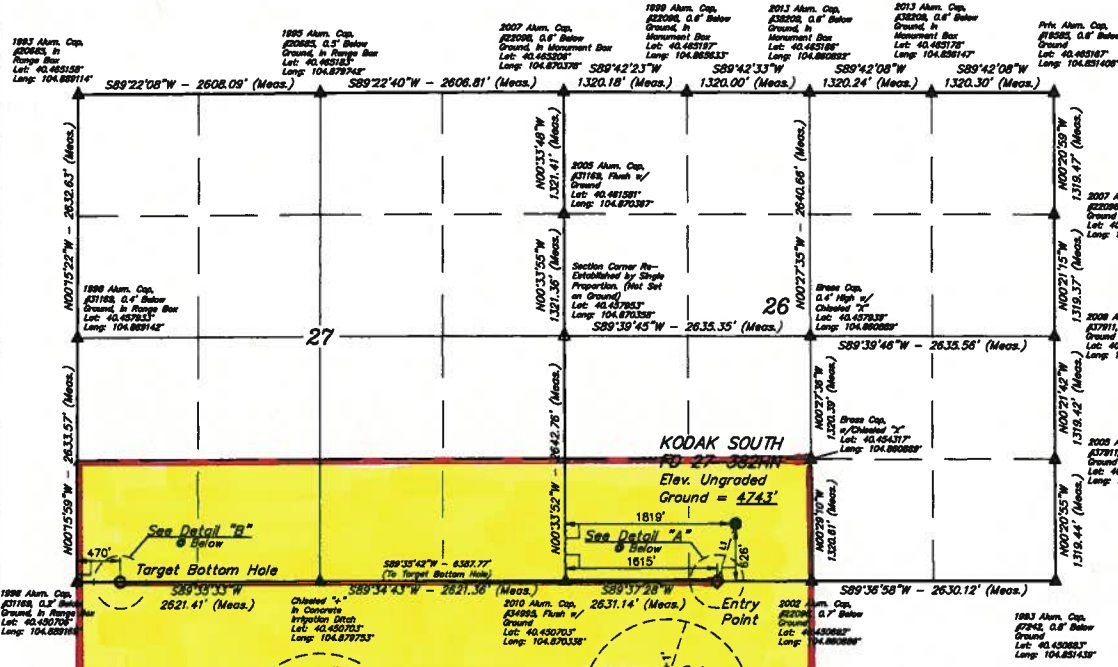


LINE TABLE		
LINE	DIRECTION	LENGTH
LI	S17°30'07"W	657.02'

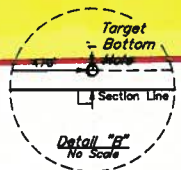
THIS IS TO CERTIFY THAT THE ABOVE IS A TRUE AND CORRECT COPY OF THE ORIGINAL SURVEY RECORDS AND THAT THE SAME HAVE BEEN EXAMINED AND FOUND TO BE TRUE AND CORRECT BY THE SURVEYOR.



UTAH ENGINEERING & LAND SURVEYING 85 SOUTH 200 EAST - VERNAL, UTAH 84078 (435) 789-1017	
SCALE 1" = 1000'	DATE SURVEYED: 10-18-13 DATE DRAWN: 11-02-13
PARTY D.N. G.W. J.S.	REFERENCES G.L.O. PLAT
WEATHER COOL	FILE GREAT WESTERN OIL & GAS COMPANY



- LEGEND:**
- 90° S. MONUMENT
 - PROPOSED WELL HEAD.
 - TARGET BOTTOM HOLE.
 - ◇ ENTRY POINT.
 - ▲ SECTION CORNERS LOCATED.
 - △ SECTION CORNERS RE-ESTABLISHED. (Not Set on Ground.)



MAP 43 (LAWRENCE BRIDGE ROAD)			MAP 43 (LAWRENCE BRIDGE ROAD)			MAP 43 (LAWRENCE BRIDGE ROAD)			POOP = 1.9
LATITUDE = 40°17'02.83" (40.284006)			LATITUDE = 40°17'02.83" (40.284006)			LATITUDE = 40°17'02.83" (40.284006)			
LONGITUDE = 104°31'14.63" (104.519748)			LONGITUDE = 104°31'14.63" (104.519748)			LONGITUDE = 104°31'14.63" (104.519748)			
MAP 42 (LAWRENCE BRIDGE ROAD)			MAP 42 (LAWRENCE BRIDGE ROAD)			MAP 42 (LAWRENCE BRIDGE ROAD)			
LATITUDE = 40°17'02.83" (40.284006)			LATITUDE = 40°17'02.83" (40.284006)			LATITUDE = 40°17'02.83" (40.284006)			
LONGITUDE = 104°31'13.03" (104.519995)			LONGITUDE = 104°31'13.03" (104.519995)			LONGITUDE = 104°31'13.03" (104.519995)			