



# NGL WATER SOLUTIONS DJ

Location Windsor  
Field Wattenberg  
Installation NGL C-5A

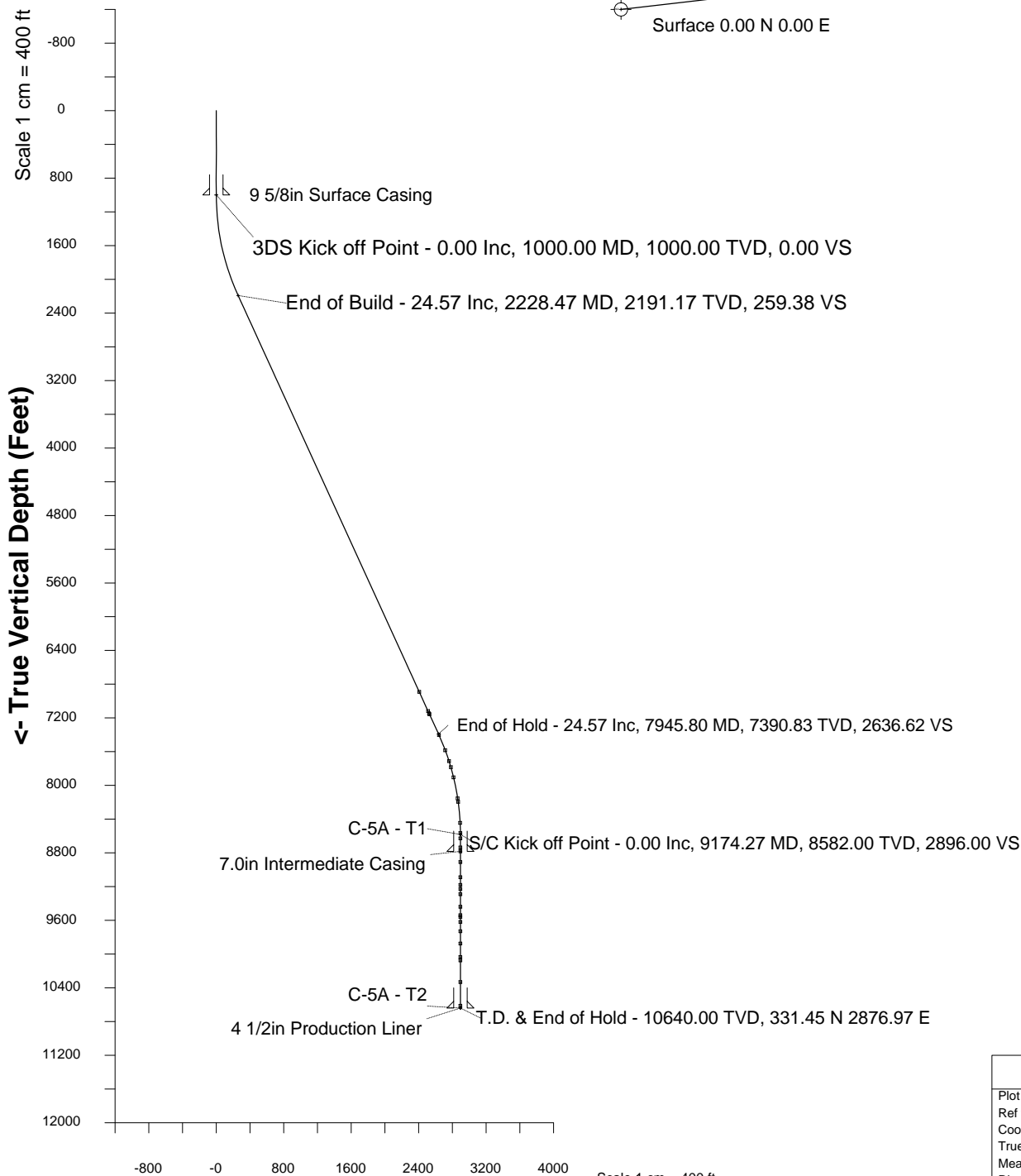
Slot NGL C-5A  
Well NGL C-5A  
Wellbore NGL C-5A (PWB)

Scale 1 cm = 200 ft

East (Feet) ->

-400 0 400 800 1200 1600 2000 2400 2800 3200

800  
400  
0  
-400  
North(Feet)  
Scale 1 cm = 200 ft



Created by admin  
Date plotted 2-Dec-2014  
Plot reference is NGL C-5A (PWB).  
Ref wellpath is NGL C-5A (PWP#1).  
Coordinates are in Feet reference Installation Centre.  
True Vertical Depths are reference Rig Datum.  
Measured Depths are reference Rig Datum.  
Rig Datum: Planned Datum #1  
Rig Datum to Mean Sea Level: 4957.00 ft.  
Plot North is aligned to GRID North.



SYSDRILL  
Wellpath Report  
Wellbore: NGL C-5A (PWB)  
Wellpath: NGL C-5A (PWP#1)

**Wellbore**

Name	Created	Last Revised
NGL C-5A (PWB)	2-Dec-2014	2-Dec-2014

**Well**

Name	Government ID	Last Revised
NGL C-5A		2-Dec-2014

**Slot**

Name	Grid Northing	Grid Easting	Latitude	Longitude	North	East
NGL C-5A	1283435.6919	3258549.5931	40.10772400	-104.57563800	0.00N	0.00E

**Installation**

Name	Easting	Northing	Map Name	North Alignment
NGL C-5A	3258549.5931	1283435.6919	NAD83 Based Colorado State Planes, Northern Zone, US Feet	Grid

**Field**

Name	Easting	Northing	Map Name	North Alignment
Wattenberg	3224065.1116	1343637.7116	SPCS CO North, ft	Grid

**Wellpath Report**

MD[ft]	Inc[deg]	Azi[deg]	TVD[ft]	North[ft]	East[ft]	Dogleg [deg/100ft]	Vertical Section[ft]	All Station Comments
0.00	0.00	0.000	0.00	0.00N	0.00E		0.00	Rig Datum
20.00	0.00	0.000	20.00	0.00N	0.00E	==>	0.00	Slot Datum
100.00	0.00	0.000	100.00	0.00N	0.00E	==>	0.00	
200.00	0.00	0.000	200.00	0.00N	0.00E	==>	0.00	
300.00	0.00	0.000	300.00	0.00N	0.00E	==>	0.00	
400.00	0.00	0.000	400.00	0.00N	0.00E	==>	0.00	
500.00	0.00	0.000	500.00	0.00N	0.00E	==>	0.00	
600.00	0.00	0.000	600.00	0.00N	0.00E	==>	0.00	
700.00	0.00	0.000	700.00	0.00N	0.00E	==>	0.00	
800.00	0.00	0.000	800.00	0.00N	0.00E	==>	0.00	
900.00	0.00	0.000	900.00	0.00N	0.00E	==>	0.00	
980.00	0.00	0.000	980.00	0.00N	0.00E	==>	0.00	
1000.00	0.00	83.430	1000.00	0.00N	0.00E	==>	0.00	9 5/8in Surface Casing
1080.00	1.60	83.430	1079.99	0.13N	1.11E	2.00	1.12	
1180.00	3.60	83.430	1179.88	0.65N	5.62E	2.00	5.65	
1280.00	5.60	83.430	1279.55	1.56N	13.58E	2.00	13.67	
1380.00	7.60	83.430	1378.89	2.88N	25.00E	2.00	25.17	
1480.00	9.60	83.430	1477.76	4.59N	39.85E	2.00	40.12	
1580.00	11.60	83.430	1576.05	6.70N	58.13E	2.00	58.51	
1680.00	13.60	83.430	1673.63	9.19N	79.80E	2.00	80.33	
1780.00	15.60	83.430	1770.40	12.08N	104.84E	2.00	105.53	
1880.00	17.60	83.430	1866.23	15.35N	133.22E	2.00	134.10	
1980.00	19.60	83.430	1961.00	19.00N	164.90E	2.00	165.99	
2080.00	21.60	83.430	2054.60	23.02N	199.85E	2.00	201.18	
2180.00	23.60	83.430	2146.92	27.42N	238.03E	2.00	239.60	
2300.00	24.57	83.430	2256.22	33.09N	287.22E	==>	289.12	
2400.00	24.57	83.430	2347.16	37.85N	328.53E	==>	330.70	
2500.00	24.57	83.430	2438.11	42.61N	369.84E	==>	372.28	
2600.00	24.57	83.430	2529.06	47.37N	411.14E	==>	413.86	
2700.00	24.57	83.430	2620.00	52.13N	452.45E	==>	455.44	
2800.00	24.57	83.430	2710.95	56.88N	493.76E	==>	497.02	
2900.00	24.57	83.430	2801.89	61.64N	535.06E	==>	538.60	
3000.00	24.57	83.430	2892.84	66.40N	576.37E	==>	580.18	
3100.00	24.57	83.430	2983.79	71.16N	617.68E	==>	621.76	
3200.00	24.57	83.430	3074.73	75.92N	658.98E	==>	663.34	
3300.00	24.57	83.430	3165.68	80.68N	700.29E	==>	704.92	
3400.00	24.57	83.430	3256.62	85.44N	741.59E	==>	746.50	
3500.00	24.57	83.430	3347.57	90.20N	782.90E	==>	788.08	
3600.00	24.57	83.430	3438.51	94.95N	824.21E	==>	829.66	
3700.00	24.57	83.430	3529.46	99.71N	865.51E	==>	871.24	
3800.00	24.57	83.430	3620.41	104.47N	906.82E	==>	912.82	
3900.00	24.57	83.430	3711.35	109.23N	948.13E	==>	954.40	
4000.00	24.57	83.430	3802.30	113.99N	989.43E	==>	995.98	
4100.00	24.57	83.430	3893.24	118.75N	1030.74E	==>	1037.56	
4200.00	24.57	83.430	3984.19	123.51N	1072.04E	==>	1079.14	
4300.00	24.57	83.430	4075.14	128.27N	1113.35E	==>	1120.71	
4400.00	24.57	83.430	4166.08	133.02N	1154.66E	==>	1162.29	

All data is in Feet unless otherwise stated  
Coordinates are from Slot MD's are from Rig and TVD's are from Rig ( Planned Datum #1 4957.0ft above Mean Sea Level )  
Vertical Section is from 0.00N 0.00E on azimuth 83.430 degrees  
Bottom hole distance is 2896.00 Feet on azimuth 83.43 degrees from Wellhead  
Calculation method uses Minimum Curvature method  
Prepared by Integrated Petroleum Technologies, Inc.  
Date Printed: 2-Dec-2014



SYSDRILL  
Wellpath Report  
Wellbore: NGL C-5A (PWB)  
Wellpath: NGL C-5A (PWP#1)

**Wellpath Report**

MD[ft]	Inc[deg]	Azi[deg]	TVD[ft]	North[ft]	East[ft]	Dogleg [deg/100ft]	Vertical Section[ft]	All Station Comments
4500.00	24.57	83.430	4257.03	137.78N	1195.96E	==>	1203.87	
4600.00	24.57	83.430	4347.97	142.54N	1237.27E	==>	1245.45	
4700.00	24.57	83.430	4438.92	147.30N	1278.58E	==>	1287.03	
4800.00	24.57	83.430	4529.86	152.06N	1319.88E	==>	1328.61	
4900.00	24.57	83.430	4620.81	156.82N	1361.19E	==>	1370.19	
5000.00	24.57	83.430	4711.76	161.58N	1402.49E	==>	1411.77	
5100.00	24.57	83.430	4802.70	166.34N	1443.80E	==>	1453.35	
5200.00	24.57	83.430	4893.65	171.09N	1485.11E	==>	1494.93	
5300.00	24.57	83.430	4984.59	175.85N	1526.41E	==>	1536.51	
5400.00	24.57	83.430	5075.54	180.61N	1567.72E	==>	1578.09	
5500.00	24.57	83.430	5166.49	185.37N	1609.03E	==>	1619.67	
5600.00	24.57	83.430	5257.43	190.13N	1650.33E	==>	1661.25	
5700.00	24.57	83.430	5348.38	194.89N	1691.64E	==>	1702.83	
5800.00	24.57	83.430	5439.32	199.65N	1732.95E	==>	1744.41	
5900.00	24.57	83.430	5530.27	204.41N	1774.25E	==>	1785.99	
6000.00	24.57	83.430	5621.21	209.16N	1815.56E	==>	1827.57	
6100.00	24.57	83.430	5712.16	213.92N	1856.86E	==>	1869.15	
6200.00	24.57	83.430	5803.11	218.68N	1898.17E	==>	1910.73	
6300.00	24.57	83.430	5894.05	223.44N	1939.48E	==>	1952.31	
6400.00	24.57	83.430	5985.00	228.20N	1980.78E	==>	1993.88	
6500.00	24.57	83.430	6075.94	232.96N	2022.09E	==>	2035.46	
6600.00	24.57	83.430	6166.89	237.72N	2063.40E	==>	2077.04	
6700.00	24.57	83.430	6257.84	242.48N	2104.70E	==>	2118.62	
6800.00	24.57	83.430	6348.78	247.23N	2146.01E	==>	2160.20	
6900.00	24.57	83.430	6439.73	251.99N	2187.31E	==>	2201.78	
7000.00	24.57	83.430	6530.67	256.75N	2228.62E	==>	2243.36	
7100.00	24.57	83.430	6621.62	261.51N	2269.93E	==>	2284.94	
7200.00	24.57	83.430	6712.56	266.27N	2311.23E	==>	2326.52	
7300.00	24.57	83.430	6803.51	271.03N	2352.54E	==>	2368.10	
7397.30	24.57	83.430	6892.00	275.66N	2392.73E	==>	2408.56	Niobrara
7400.00	24.57	83.430	6894.46	275.79N	2393.85E	==>	2409.68	
7500.00	24.57	83.430	6985.40	280.55N	2435.15E	==>	2451.26	
7600.00	24.57	83.430	7076.35	285.30N	2476.46E	==>	2492.84	
7648.00	24.57	83.430	7120.00	287.59N	2496.28E	==>	2512.80	Ft Hayes Codell Ss Carlisle Sh
7677.69	24.57	83.430	7147.00	289.00N	2508.55E	==>	2525.14	
7688.68	24.57	83.430	7157.00	289.52N	2513.09E	==>	2529.71	
7700.00	24.57	83.430	7167.29	290.06N	2517.76E	==>	2534.42	
7800.00	24.57	83.430	7258.24	294.82N	2559.07E	==>	2576.00	
7900.00	24.57	83.430	7349.19	299.58N	2600.38E	==>	2617.58	
7925.80	24.57	83.430	7372.65	300.81N	2611.03E	==>	2628.30	
7959.16	24.30	83.430	7403.00	302.39N	2624.79E	2.00	2642.15	X Bentonite
8025.80	22.97	83.430	7464.05	305.45N	2651.33E	2.00	2668.86	
8125.80	20.97	83.430	7556.78	309.73N	2688.49E	2.00	2706.27	
8153.82	20.41	83.430	7583.00	310.86N	2698.33E	2.00	2716.17	J Ss
8225.80	18.97	83.430	7650.76	313.64N	2722.41E	2.00	2740.42	
8291.36	17.66	83.430	7713.00	316.00N	2742.88E	2.00	2761.02	Skull Creek
8325.80	16.97	83.430	7745.88	317.17N	2753.06E	2.00	2771.27	
8366.61	16.15	83.430	7785.00	318.50N	2764.62E	2.00	2782.90	Dakota Ss
8425.80	14.97	83.430	7842.02	320.32N	2780.39E	2.00	2798.78	
8490.80	13.67	83.430	7905.00	322.16N	2796.36E	2.00	2814.86	Morrison Fm
8525.80	12.97	83.430	7939.05	323.08N	2804.37E	2.00	2822.92	
8625.80	10.97	83.430	8036.87	325.46N	2824.97E	2.00	2843.66	
8725.80	8.97	83.430	8135.36	327.44N	2842.17E	2.00	2860.97	
8745.67	8.57	83.430	8155.00	327.78N	2845.18E	2.00	2864.00	Entrada Ss Lykins Fm
8786.08	7.76	83.430	8195.00	328.44N	2850.88E	2.00	2869.74	
8825.80	6.97	83.430	8234.39	329.02N	2855.94E	2.00	2874.83	
8925.80	4.97	83.430	8333.84	330.21N	2866.27E	2.00	2885.23	
9025.80	2.97	83.430	8433.60	331.01N	2873.15E	2.00	2892.16	
9037.21	2.74	83.430	8445.00	331.07N	2873.72E	2.00	2892.72	Permian
9125.80	0.97	83.430	8533.53	331.40N	2876.56E	2.00	2895.59	
9157.27	0.34	83.430	8565.00	331.44N	2876.92E	2.00	2895.95	Forelle Anh
9200.00	0.00	83.430	8607.73	331.45N	2876.97E	==>	2896.00	
9220.27	0.00	83.430	8628.00	331.45N	2876.97E	==>	2896.00	Minnekahta Anh
9300.00	0.00	83.430	8707.73	331.45N	2876.97E	==>	2896.00	
9328.27	0.00	83.430	8736.00	331.45N	2876.97E	==>	2896.00	Blaine Anh Lyons Ss, 7.0in Intermediate Casing
9374.27	0.00	83.430	8782.00	331.45N	2876.97E	==>	2896.00	
9400.00	0.00	83.430	8807.73	331.45N	2876.97E	==>	2896.00	
9500.00	0.00	83.430	8907.73	331.45N	2876.97E	==>	2896.00	
9502.27	0.00	83.430	8910.00	331.45N	2876.97E	==>	2896.00	L. Satanka
9600.00	0.00	83.430	9007.73	331.45N	2876.97E	==>	2896.00	
9682.27	0.00	83.430	9090.00	331.45N	2876.97E	==>	2896.00	L. Satanka Shale

All data is in Feet unless otherwise stated  
Coordinates are from Slot MD's are from Rig and TVD's are from Rig ( Planned Datum #1 4957.0ft above Mean Sea Level )  
Vertical Section is from 0.00N 0.00E on azimuth 83.430 degrees  
Bottom hole distance is 2896.00 Feet on azimuth 83.43 degrees from Wellhead  
Calculation method uses Minimum Curvature method  
Prepared by Integrated Petroleum Technologies, Inc.  
Date Printed: 2-Dec-2014



SYSDRILL  
Wellpath Report  
Wellbore: NGL C-5A (PWB)  
Wellpath: NGL C-5A (PWP#1)

**Wellpath Report**

MD[ft]	Inc[deg]	Azi[deg]	TVD[ft]	North[ft]	East[ft]	Dogleg [deg/100ft]	Vertical Section[ft]	All Station Comments
9700.00	0.00	83.430	9107.73	331.45N	2876.97E	==>	2896.00	
9772.27	0.00	83.430	9180.00	331.45N	2876.97E	==>	2896.00	Wolfcamp
9800.00	0.00	83.430	9207.73	331.45N	2876.97E	==>	2896.00	
9822.27	0.00	83.430	9230.00	331.45N	2876.97E	==>	2896.00	Amazon
9882.27	0.00	83.430	9290.00	331.45N	2876.97E	==>	2896.00	Council Grove
9900.00	0.00	83.430	9307.73	331.45N	2876.97E	==>	2896.00	
10000.00	0.00	83.430	9407.73	331.45N	2876.97E	==>	2896.00	
10032.27	0.00	83.430	9440.00	331.45N	2876.97E	==>	2896.00	Admire
10100.00	0.00	83.430	9507.73	331.45N	2876.97E	==>	2896.00	
10132.27	0.00	83.430	9540.00	331.45N	2876.97E	==>	2896.00	U. Virgil
10152.27	0.00	83.430	9560.00	331.45N	2876.97E	==>	2896.00	Mamoo
10200.00	0.00	83.430	9607.73	331.45N	2876.97E	==>	2896.00	
10212.27	0.00	83.430	9620.00	331.45N	2876.97E	==>	2896.00	L. Virgil Carbonate
10300.00	0.00	83.430	9707.73	331.45N	2876.97E	==>	2896.00	
10322.27	0.00	83.430	9730.00	331.45N	2876.97E	==>	2896.00	Missouri Carbonate
10400.00	0.00	83.430	9807.73	331.45N	2876.97E	==>	2896.00	
10467.27	0.00	83.430	9875.00	331.45N	2876.97E	==>	2896.00	Missouri Fountain
10500.00	0.00	83.430	9907.73	331.45N	2876.97E	==>	2896.00	
10600.00	0.00	83.430	10007.73	331.45N	2876.97E	==>	2896.00	
10627.27	0.00	83.430	10035.00	331.45N	2876.97E	==>	2896.00	Desm. Carbonate
10667.27	0.00	83.430	10075.00	331.45N	2876.97E	==>	2896.00	Fountain Desm.
10700.00	0.00	83.430	10107.73	331.45N	2876.97E	==>	2896.00	
10800.00	0.00	83.430	10207.73	331.45N	2876.97E	==>	2896.00	
10900.00	0.00	83.430	10307.73	331.45N	2876.97E	==>	2896.00	
10925.27	0.00	83.430	10333.00	331.45N	2876.97E	==>	2896.00	Fountain Atokan
11000.00	0.00	83.430	10407.73	331.45N	2876.97E	==>	2896.00	
11100.00	0.00	83.430	10507.73	331.45N	2876.97E	==>	2896.00	
11200.00	0.00	83.430	10607.73	331.45N	2876.97E	==>	2896.00	
11205.27	0.00	83.430	10613.00	331.45N	2876.97E	==>	2896.00	Fountain Morrowan
11232.27	0.00	0.000	10640.00	331.45N	2876.97E	==>	2896.00	4 1/2in Production Liner

All data is in Feet unless otherwise stated  
Coordinates are from Slot MD's are from Rig and TVD's are from Rig ( Planned Datum #1 4957.0ft above Mean Sea Level )  
Vertical Section is from 0.00N 0.00E on azimuth 83.430 degrees  
Bottom hole distance is 2896.00 Feet on azimuth 83.43 degrees from Wellhead  
Calculation method uses Minimum Curvature method  
Prepared by Integrated Petroleum Technologies, Inc.  
Date Printed: 2-Dec-2014



SYSDRILL  
Wellpath Report  
Wellbore: NGL C-5A (PWB)  
Wellpath: NGL C-5A (PWP#1)

### Hole Sections

Diameter [in]	Start MD[ft]	Start TVD[ft]	Start North[ft]	Start East[ft]	End MD[ft]	End TVD[ft]	End North[ft]	End East[ft]	Wellbore
12 1/4	20.00	20.00	0.00N	0.00E	1000.00	1000.00	0.00N	0.00E	NGL C-5A (PWB)
8 3/4	1000.00	1000.00	0.00N	0.00E	9374.27	8782.00	331.45N	2876.97E	NGL C-5A (PWB)
6 1/8	9374.27	8782.00	331.45N	2876.97E	11232.27	10640.00	331.45N	2876.97E	NGL C-5A (PWB)

### Casings

Name	Top MD[ft]	Top TVD[ft]	Top North[ft]	Top East[ft]	Shoe MD[ft]	Shoe TVD[ft]	Shoe North[ft]	Shoe East[ft]	Wellbore
9 5/8in Surface Casing	20.00	20.00	0.00N	0.00E	1000.00	1000.00	0.00N	0.00E	NGL C-5A (PWB)
7.0in Intermediate Casing	20.00	20.00	0.00N	0.00E	9374.27	8782.00	331.45N	2876.97E	NGL C-5A (PWB)
4 1/2in Production Liner	9274.00	8681.73	331.45N	2876.97E	11232.27	10640.00	331.45N	2876.97E	NGL C-5A (PWB)

### Targets

Name	North[ft]	East[ft]	TVD[ft]	Latitude	Longitude	Easting	Northing	Last Revised
C-5A - T1	331.45N	2876.97E	8582.00	40.10855100	-104.56534100	3261426.44	1283767.12	2-Jun-2014
C-5A - T2	331.45N	2876.97E	10640.00	40.10855100	-104.56534100	3261426.44	1283767.12	2-Jun-2014

### Formations

Formation Name	MD[ft]	TVD[ft]	Dip Angle[deg]	Dip Azimuth[deg]	Incidence Angle[deg]	Remarks
Niobrara	7397.30	6892.00				
Ft Hayes	7648.00	7120.00				
Codell Ss	7677.69	7147.00				
Carlisle Sh	7688.68	7157.00				
X Bentonite	7959.16	7403.00				
J Ss	8153.82	7583.00				
Skull Creek	8291.36	7713.00				
Dakota Ss	8366.61	7785.00				
Morrison Fm	8490.80	7905.00				
Entrada Ss	8745.67	8155.00				
Lykins Fm	8786.08	8195.00				
Permian	9037.21	8445.00				
Forelle Anh	9157.27	8565.00				
Minnekahta Anh	9220.27	8628.00				
Blaine Anh	9328.27	8736.00				
Lyons Ss	9374.27	8782.00				
L. Satanka	9502.27	8910.00				
L. Satanka Shale	9682.27	9090.00				
Wolfcamp	9772.27	9180.00				
Amazon	9822.27	9230.00				
Council Grove	9882.27	9290.00				
Admire	10032.27	9440.00				
U. Virgil	10132.27	9540.00				
Mamoo	10152.27	9560.00				
L. Virgil Carbonate	10212.27	9620.00				
Missouri Carbonate	10322.27	9730.00				
Missouri Fountain	10467.27	9875.00				
Desm. Carbonate	10627.27	10035.00				
Fountain Desm.	10667.27	10075.00				
Fountain Atokan	10925.27	10333.00				
Fountain Morrowan	11205.27	10613.00				

### Survey Tool Program

Reference	Survey Name	MD[ft]	TVD[ft]	Survey Tool	Error Model
329137	Planned	11232.27	10640.00	WdW Rate Gyro	Standard

All data is in Feet unless otherwise stated  
Coordinates are from Slot MD's are from Rig and TVD's are from Rig ( Planned Datum #1 4957.0ft above Mean Sea Level )  
Vertical Section is from 0.00N 0.00E on azimuth 83.430 degrees  
Bottom hole distance is 2896.00 Feet on azimuth 83.43 degrees from Wellhead  
Calculation method uses Minimum Curvature method  
Prepared by Integrated Petroleum Technologies, Inc.  
Date Printed: 2-Dec-2014



SYSDRILL  
Closest Approach + Clearance Factor Summary Report  
Wellbore: NGL C-5A (PWB)

Ellipse separations are reported ONLY if BOTH wells have uncertainty data  
Only Depth and Magnetic Reference Field error terms are correlated across tie points  
Scan limit is calculated on CENTRE to CENTRE distance

Summary data uses Closest Approach clearance calculation for all minima  
Hole size/Casings ARE included  
Hole size/Casings are NOT subtracted from Centre-Centre distance  
Confidence limit of 95.00% / 2.80 SD.

Wellbore		
Name	Created	Last Revised
NGL C-5A (PWB)	2-Dec-2014	2-Dec-2014

Well		
Name	Government ID	Last Revised
NGL C-5A		2-Dec-2014

Slot						
Name	Grid Northing	Grid Easting	Latitude	Longitude	North	East
NGL C-5A	1283435.6919	3258549.5931	40.10772400	-104.57563800	0.00N	0.00E

Installation					
Name	Easting	Northing	Coord System Name	North Alignment	
NGL C-5A	3258549.5931	1283435.6919	CO83-NF on NORTH AMERICAN DATUM 1983 datum	Grid	

Field				
Name	Easting	Northing	Coord System Name	North Alignment
Wattenberg	3224065.1116	1343637.7116	CO83-NF on NORTH AMERICAN DATUM 1983 datum	Grid

Clearance Summary							
Offset WellName	Separation [ft]	MD[ft]	Diverging From[ft]	Ellipse Separation[ft]	Ellipse MD[ft]	Clearance Factor	Clearance MD[ft]
W GREER #13-28	611.35	8462.52	8462.52	569.60	8462.52	14.64	8451.76
W Stonebraker #28W-304	1034.07	7877.61	7877.61	910.69	7877.61	8.38	7877.61
W PARKER #29-34	1075.75	2976.28	2976.28	1054.55	3021.97	43.35	4252.28
W JIM CREEK #1-29	1293.29	1004.25	1004.25	1282.81	1000.00	97.75	2365.80
W Stonebraker #28V-234	1522.60	7837.78	7837.78	1351.95	7837.78	8.92	7837.78
W GREER #14-28	1695.08	8599.40	8599.40	1643.81	8599.40	33.04	8645.80
W Stonebraker #28V-404	1801.39	8034.94	8034.94	1613.09	8034.94	9.57	8025.25
W Stonebraker #28V-314	2154.11	7928.26	7928.26	1961.34	7928.26	11.17	7920.00
W BAUMGARTNER #14-29	2198.12	1004.25	1004.25	2187.74	1000.00	133.61	5991.13
W GREER #23-28	2213.40	8747.03	8747.03	2177.72	8747.03	62.01	8796.25
W KAMINSKY #1-29	2228.46	1004.25	1004.25	2217.74	1000.00	109.93	6187.98
W BELL #41-29	2387.41	7401.89	7401.89	2341.42	7467.51	47.67	8545.80
W GREER #24-28	2574.77	8641.33	8641.33	2528.62	8645.80	55.76	8697.82
W NGL #C5	2649.00	1004.25	11222.27	2646.46	1000.00	238.87	11232.27
W RIES #11-28	2682.50	8681.42	8681.42	2633.09	8681.42	54.19	8779.84
W STONEBRAKER #32-28	3208.20	8845.80	8845.80	3172.12	8845.80	88.68	8993.10
W BRNAK #34-28	3673.16	8861.86	8861.86	3631.01	8861.86	87.07	8945.80