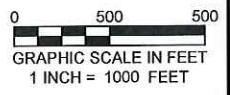
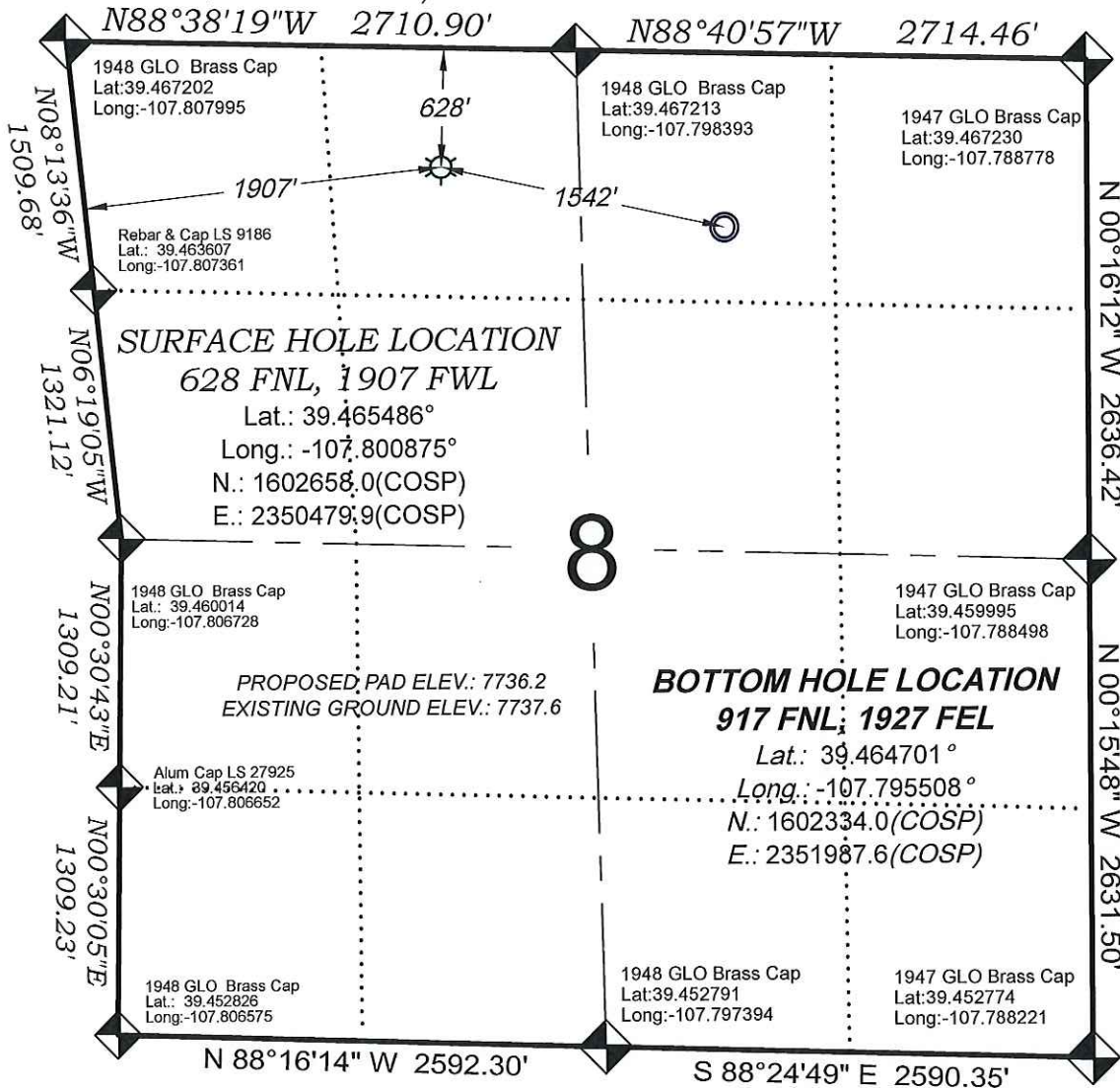


Federal- RU 431-8

T. 7 S.

(BASIS OF BEARING)







SURFACE HOLE LOCATION
 628 FNL, 1907 FWL
 Lat.: 39.465486°
 Long.: -107.800875°
 N.: 1602658.0(COSP)
 E.: 2350479.9(COSP)

BOTTOM HOLE LOCATION
 917 FNL, 1927 FEL
 Lat.: 39.464701°
 Long.: -107.795508°
 N.: 1602334.0(COSP)
 E.: 2351987.6(COSP)

PROPOSED PAD ELEV.: 7736.2
 EXISTING GROUND ELEV.: 7737.6

THERE ARE NO VISIBLE IMPROVEMENTS WITHIN 500' OF THIS LOCATION

- LEGEND -

- FIELD LOCATED SECTION MONUMENTS AS DESCRIBED 
- FIELD SURVEYED WELL LOCATION 
- CALCULATED BOTTOM HOLE LOCATION 
- CALCULATED SECTION CORNER LOCATION 

SURVEYORS STATEMENT

I, MICHAEL J. LANGHORNE, A REGISTERED LAND SURVEYOR IN THE STATE OF COLORADO DO HEREBY CERTIFY THAT THE SURVEY SHOWN HEREON WAS PREPARED UNDER MY DIRECT SUPERVISION AND HAS BEEN STAKED ON THE GROUND AS SHOWN ON THE PLAT AND CHECKING THAT THIS MAP IS A TRUE REPRESENTATION THEREOF.

Michael J. Langhorne

MICHAEL J. LANGHORNE, COLORADO REGISTRATION NO. 36572
 FOR AND ON BEHALF OF
 BOOKCLIFF SURVEY SERVICES, INC.

REFERENCES

- 1) RESURVEY T. 7 S., R. 93 W., 6th P.M (GLO PLAT)
- 2) U.S.G.S. QUAD: NORTH MAMM PEAK, CO

NOTES

- 1) ELEVATIONS BASED ON N.A. V.D. 1988 PUBLISHED COORDINATES.
- 2) LATITUDES AND LONGITUDES ARE BASE ON NAD 83, PUBLISHED COORDINATES
- 3) STATE PLANE COORDINATES ARE BASED ON COLORADO CENTRAL ZONE, U.S. SURVEY FEET.
- 4) ELEVATION MASK SET TO 15°
- 5) GPS OPERATOR J. KIRKPATRICK, OBSERVED A PDOP 1.8 ON SURVEY POINT NUMBER 391.
- 6) SURFACE AND BOTTOM HOLE LOCATIONS ARE MEASURED 90° FROM SECTION LINES.

WELL LOCATION PLAT Prepared for: WPXENERGY

WPX Energy Rocky Mountain, LLC
 NE1/4 NW1/4, SECTION 8
 T. 7 S., R. 93 W. of the 6th. P.M.
 GARFIELD COUNTY, COLORADO

136 East Third Street
 Rifle, Colorado
 81650 Ph. (970)
 625-2720 Fax (970)
 625-2773



SURVEY DATE:	10/14/14
MAP DATE:	10/14/14
SCALE:	1" = 1000'
PLAT:	1 of 1
PROJECT:	Valley