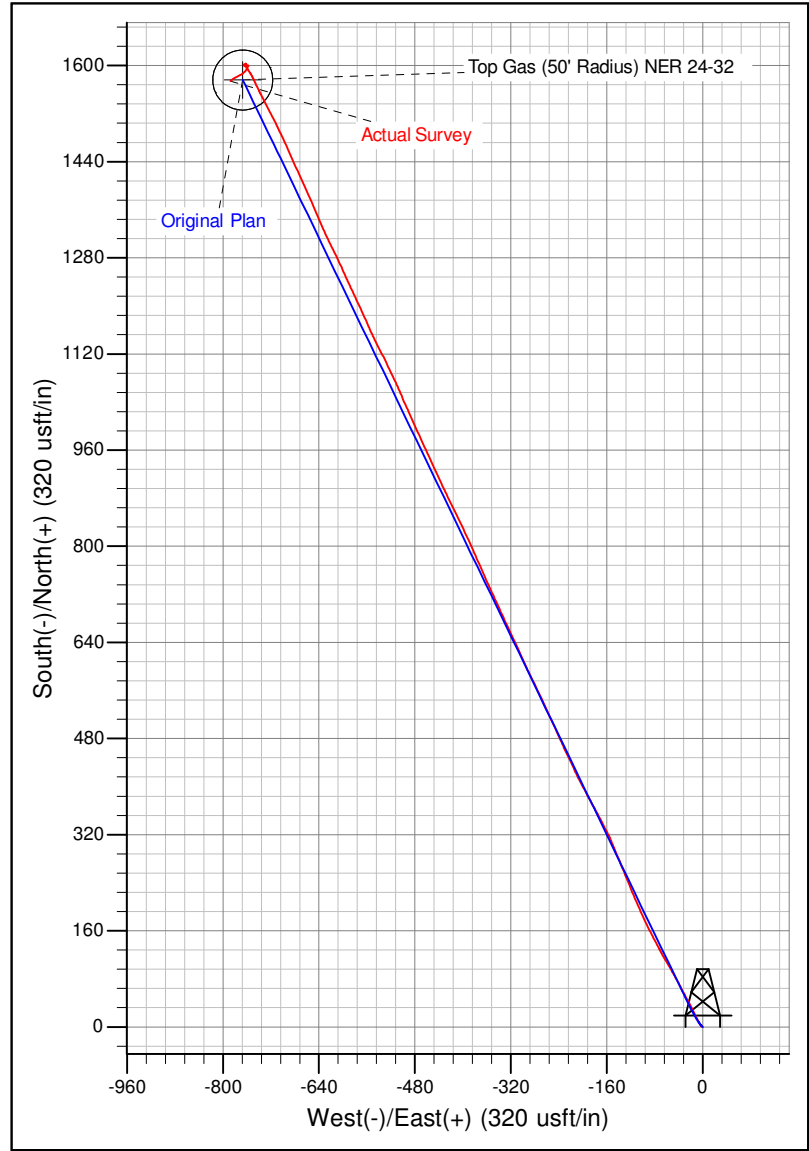
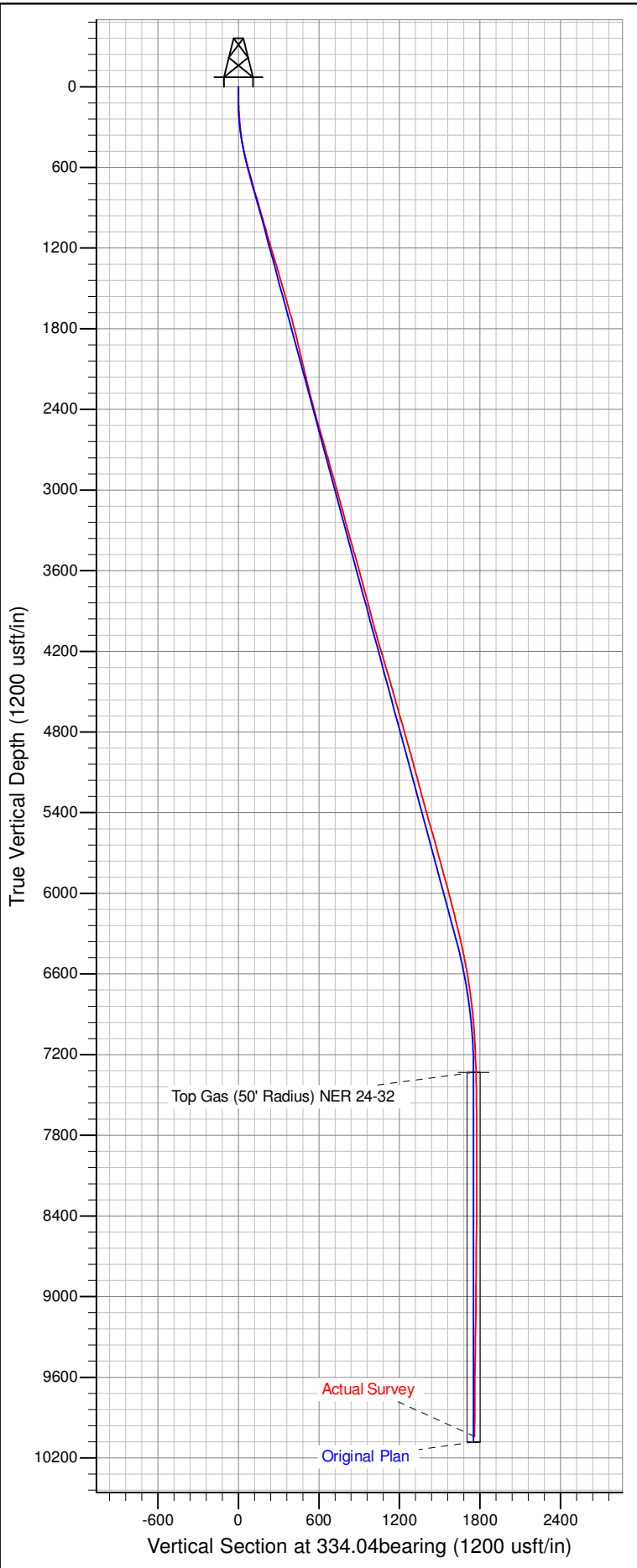




Well Name: NER 24-32  
 Surface Location: Single Cellar RU 23-5 Pad  
 North American Datum 1983 , US State Plane 1983 , Colorado Central Zone  
 Ground Elevation: 7602.00  
 +N/-S 0.00 +E/-W 0.00 Northing 1606118.40 Easting 2351122.40 Latitude 39.47503 Longitude -107.79891 Slot A2  
 KELLY BUSHING @ 7628.00usft (Nabors 576 (26'))



Azimuths to True North  
 Magnetic North: 9.85°

Magnetic Field  
 Strength: 51928.5snT  
 Dip Angle: 65.67°  
 Date: 8/25/2014  
 Model: IGRF2010

The compass rose shows True North (T) pointing upwards and Magnetic North (M) pointing slightly to the right of True North. The magnetic field strength is 51928.5snT, the dip angle is 65.67°, and the data is from 8/25/2014 using the IGRF2010 model.