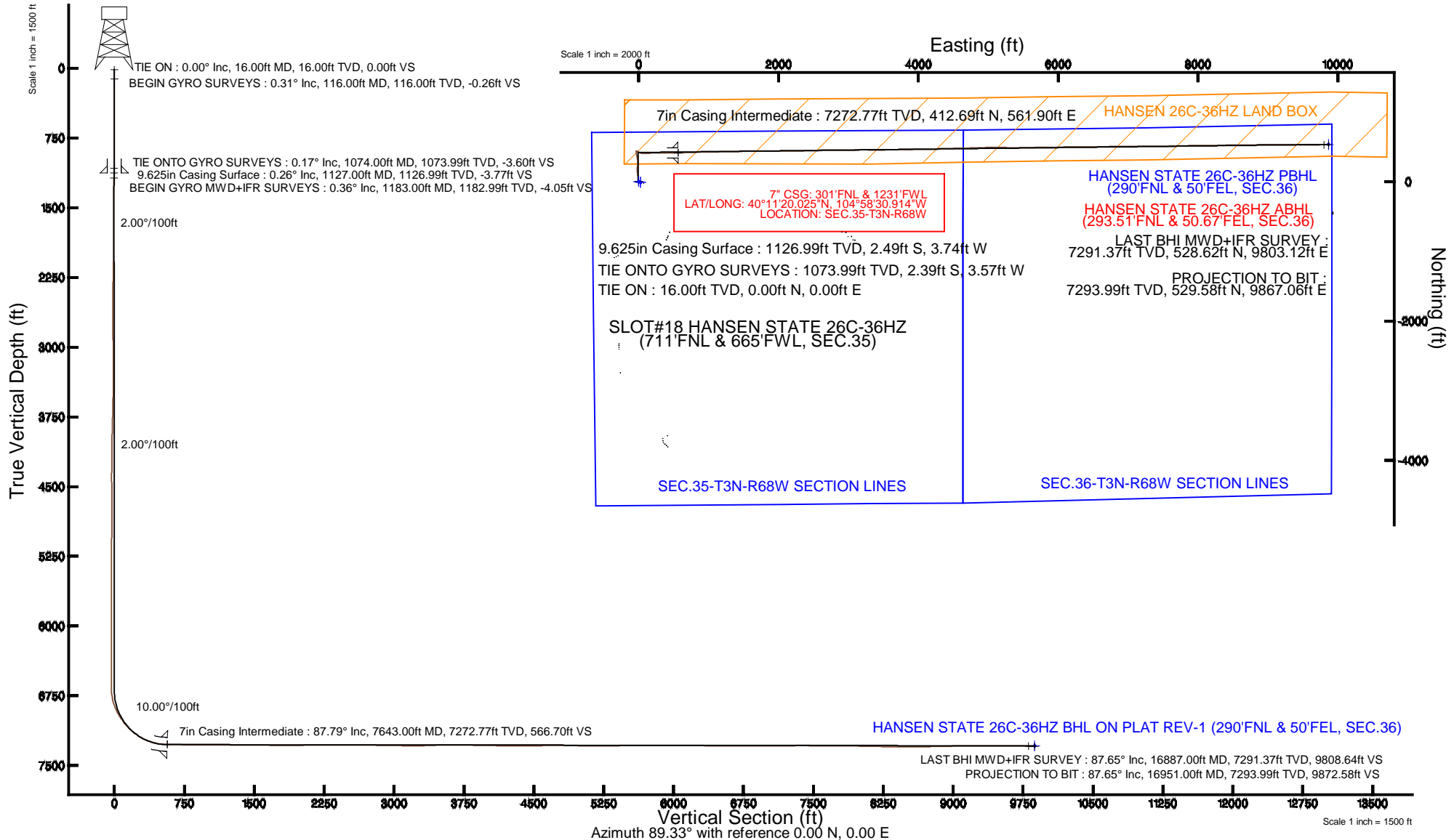


KERR-MCGEE OIL & GAS ONSHORE LP

Location: COLORADO Slot: SLOT#18 HANSEN STATE 26C-36HZ (711'FNL & 665'FWL, SEC.35)
 Field: WELD COUNTY (KERR MCGEE) Well: HANSEN STATE 26C-36HZ
 Facility: SEC.35-T3N-R68W Wellbore: HANSEN STATE 26C-36HZ PWB

Plot reference wellpath is HANSEN STATE 26C-36HZ (REV-A.0) PWP

True vertical depths are referenced to XTREME 24 (16KB) (RKB)	Grid System: NAD83 / Lambert Colorado SP, Northern Zone (501), US feet
Measured depths are referenced to XTREME 24 (16KB) (RKB)	North Reference: True north
XTREME 24 (16KB) (RKB) to Mean Sea Level: 4952 feet	Scale: True distance
Mean Sea Level to Mud line (At Slot: SLOT#18 HANSEN STATE 26C-36HZ (711'FNL & 665'FWL, SEC.35)): 0 feet	Depths are in feet
Coordinates are in feet referenced to Slot	Created by: robiale01 on 11/6/2014



Actual Wellpath Report

HANSEN STATE 26C-36HZ AWP

Page 1 of 7

REFERENCE WELLPATH IDENTIFICATION			
Operator	KERR-MCGEE OIL & GAS ONSHORE LP	Slot	SLOT#18 HANSEN STATE 26C-36HZ (711'FNL & 665'FWL, SEC.35)
Area	COLORADO	Well	HANSEN STATE 26C-36HZ
Field	WELD COUNTY (KERR MCGEE)	Wellbore	HANSEN STATE 26C-36HZ AWB
Facility	SEC.35-T3N-R68W		

REPORT SETUP INFORMATION			
Projection System	NAD83 / Lambert Colorado SP, Northern Zone (501), US feet	Software System	WellArchitect® 4.0.0
North Reference	True	User	Robiale01
Scale	0.999957	Report Generated	11/3/2014 at 8:23:57 AM
Convergence at slot	n/a	Database/Source file	WellArchitectDB/HANSEN_STATE_26C-36HZ_AWB.xml

WELLPATH LOCATION						
	Local coordinates		Grid coordinates		Geographic coordinates	
	North[ft]	East[ft]	Easting[US ft]	Northing[US ft]	Latitude	Longitude
Slot Location	777.07	-420.49	3146042.04	1311675.21	40°11'15.947"N	104°58'38.154"W
Facility Reference Pt			3146467.10	1310900.67	40°11'08.268"N	104°58'32.736"W
Field Reference Pt			3197771.84	1268891.29	40°04'09.600"N	104°47'36.000"W

WELLPATH DATUM			
Calculation method	Minimum curvature	XTREME 24 (16'KB) (RKB) to Facility Vertical Datum	4952.00ft
Horizontal Reference Pt	Slot	XTREME 24 (16'KB) (RKB) to Mean Sea Level	4952.00ft
Vertical Reference Pt	XTREME 24 (16'KB) (RKB)	XTREME 24 (16'KB) (RKB) to Mud Line at Slot (SLOT#18 HANSEN STATE 26C-36HZ (711'FNL & 665'FWL, SEC.35))	4952.00ft
MD Reference Pt	XTREME 24 (16'KB) (RKB)	Section Origin	N 0.00, E 0.00 ft
Field Vertical Reference	Mean Sea Level	Section Azimuth	86.93°

REFERENCE WELLPATH IDENTIFICATION			
Operator	KERR-MCGEE OIL & GAS ONSHORE LP	Slot	SLOT#18 HANSEN STATE 26C-36HZ (711'FNL & 665'FWL, SEC.35)
Area	COLORADO	Well	HANSEN STATE 26C-36HZ
Field	WELD COUNTY (KERR MCGEE)	Wellbore	HANSEN STATE 26C-36HZ AWP
Facility	SEC.35-T3N-R68W		

WELLPATH DATA (175 stations) † = interpolated/extrapolated station										
MD [ft]	Inclination [°]	Azimuth [°]	TVD [ft]	Vert Sect [ft]	North [ft]	East [ft]	Latitude	Longitude	DLS [°/100ft]	Comments
0.00†	0.000	255.280	0.00	0.00	0.00	0.00	40°11'15.947"N	104°58'38.154"W	0.00	
16.00	0.000	255.280	16.00	0.00	0.00	0.00	40°11'15.947"N	104°58'38.154"W	0.00	TIE ON
116.00	0.310	255.280	116.00	-0.26	-0.07	-0.26	40°11'15.946"N	104°58'38.157"W	0.31	BEGIN GYRO SURVEYS
216.00	0.370	248.170	216.00	-0.84	-0.26	-0.82	40°11'15.944"N	104°58'38.165"W	0.07	
316.00	0.260	243.610	316.00	-1.35	-0.48	-1.33	40°11'15.942"N	104°58'38.171"W	0.11	
416.00	0.200	174.530	416.00	-1.55	-0.75	-1.51	40°11'15.940"N	104°58'38.173"W	0.27	
516.00	0.310	230.160	515.99	-1.76	-1.10	-1.70	40°11'15.936"N	104°58'38.176"W	0.26	
616.00	0.170	250.140	615.99	-2.12	-1.32	-2.05	40°11'15.934"N	104°58'38.180"W	0.16	
716.00	0.220	243.260	715.99	-2.44	-1.46	-2.36	40°11'15.933"N	104°58'38.184"W	0.06	
816.00	0.350	238.910	815.99	-2.88	-1.70	-2.79	40°11'15.930"N	104°58'38.190"W	0.13	
916.00	0.240	199.510	915.99	-3.23	-2.06	-3.13	40°11'15.927"N	104°58'38.194"W	0.22	
1016.00	0.230	254.440	1015.99	-3.51	-2.31	-3.39	40°11'15.924"N	104°58'38.198"W	0.22	
1074.00	0.170	232.700	1073.99	-3.69	-2.39	-3.57	40°11'15.923"N	104°58'38.200"W	0.17	TIE ONTO GYRO SURVEYS
1183.00	0.360	250.240	1182.99	-4.16	-2.61	-4.02	40°11'15.921"N	104°58'38.206"W	0.19	BEGIN GYRO MWD+IFR SURVEYS
1308.00	0.220	288.840	1307.99	-4.75	-2.66	-4.62	40°11'15.921"N	104°58'38.214"W	0.19	
1402.00	1.840	348.910	1401.97	-5.13	-1.12	-5.08	40°11'15.936"N	104°58'38.219"W	1.85	
1497.00	3.910	357.730	1496.85	-5.30	3.61	-5.50	40°11'15.983"N	104°58'38.225"W	2.22	
1591.00	6.120	2.570	1590.48	-4.76	11.82	-5.40	40°11'16.064"N	104°58'38.224"W	2.39	
1685.00	7.410	359.440	1683.82	-4.00	22.89	-5.24	40°11'16.173"N	104°58'38.221"W	1.43	
1779.00	8.220	2.350	1776.95	-3.10	35.66	-5.02	40°11'16.299"N	104°58'38.219"W	0.96	
1873.00	8.500	349.960	1869.96	-3.31	49.22	-5.96	40°11'16.433"N	104°58'38.231"W	1.94	
1968.00	10.170	355.270	1963.70	-4.41	64.49	-7.87	40°11'16.584"N	104°58'38.255"W	1.98	
2059.00	9.910	353.530	2053.31	-5.10	80.28	-9.42	40°11'16.740"N	104°58'38.275"W	0.44	
2151.00	9.560	351.790	2143.98	-6.25	95.71	-11.40	40°11'16.893"N	104°58'38.301"W	0.50	
2241.00	9.800	351.490	2232.70	-7.65	110.68	-13.60	40°11'17.041"N	104°58'38.329"W	0.27	
2333.00	9.800	350.520	2323.36	-9.27	126.14	-16.05	40°11'17.194"N	104°58'38.361"W	0.18	
2425.00	9.040	355.950	2414.12	-10.26	141.08	-17.85	40°11'17.341"N	104°58'38.384"W	1.27	
2517.00	8.830	356.040	2505.00	-10.50	155.33	-18.85	40°11'17.482"N	104°58'38.397"W	0.23	
2608.00	9.110	2.010	2594.89	-9.97	169.50	-19.08	40°11'17.622"N	104°58'38.400"W	1.07	
2701.00	9.070	1.960	2686.72	-8.67	184.18	-18.57	40°11'17.767"N	104°58'38.393"W	0.04	
2793.00	8.580	1.920	2777.63	-7.44	198.29	-18.09	40°11'17.906"N	104°58'38.387"W	0.53	
2884.00	10.260	3.860	2867.40	-5.87	213.16	-17.32	40°11'18.053"N	104°58'38.377"W	1.88	
2976.00	9.820	3.730	2957.99	-3.95	229.16	-16.26	40°11'18.212"N	104°58'38.363"W	0.48	
3068.00	8.820	3.450	3048.78	-2.22	244.03	-15.32	40°11'18.359"N	104°58'38.351"W	1.09	
3159.00	7.990	1.320	3138.80	-0.94	257.32	-14.76	40°11'18.490"N	104°58'38.344"W	0.97	
3250.00	8.440	3.510	3228.87	0.31	270.31	-14.20	40°11'18.618"N	104°58'38.337"W	0.60	
3342.00	9.380	355.420	3319.76	0.88	284.52	-14.39	40°11'18.759"N	104°58'38.339"W	1.70	
3434.00	8.490	352.480	3410.64	0.16	298.73	-15.87	40°11'18.899"N	104°58'38.359"W	1.09	
3526.00	10.230	356.440	3501.41	-0.44	313.62	-17.27	40°11'19.046"N	104°58'38.377"W	2.02	
3619.00	9.730	351.730	3593.01	-1.22	329.64	-18.91	40°11'19.204"N	104°58'38.398"W	1.03	
3712.00	9.200	351.230	3684.74	-2.67	344.76	-21.18	40°11'19.354"N	104°58'38.427"W	0.58	
3805.00	9.280	348.760	3776.54	-4.47	359.46	-23.77	40°11'19.499"N	104°58'38.460"W	0.44	
3898.00	7.820	348.810	3868.50	-6.43	373.03	-26.46	40°11'19.633"N	104°58'38.495"W	1.57	
3991.00	7.280	347.350	3960.69	-8.31	384.98	-28.98	40°11'19.751"N	104°58'38.527"W	0.62	
4084.00	4.390	350.280	4053.20	-9.70	394.24	-30.87	40°11'19.843"N	104°58'38.552"W	3.12	

Actual Wellpath Report

HANSEN STATE 26C-36HZ AWP

Page 3 of 7

REFERENCE WELLPATH IDENTIFICATION			
Operator	KERR-MCGEE OIL & GAS ONSHORE LP	Slot	SLOT#18 HANSEN STATE 26C-36HZ (711'FNL & 665'FWL, SEC.35)
Area	COLORADO	Well	HANSEN STATE 26C-36HZ
Field	WELD COUNTY (KERR MCGEE)	Wellbore	HANSEN STATE 26C-36HZ AWP
Facility	SEC.35-T3N-R68W		

WELLPATH DATA (175 stations) † = interpolated/extrapolated station

MD [ft]	Inclination [°]	Azimuth [°]	TVD [ft]	Vert Sect [ft]	North [ft]	East [ft]	Latitude	Longitude	DLS [°/100ft]	Comments
4177.00	3.860	353.980	4145.96	-10.27	400.86	-31.80	40°11'19.908"N	104°58'38.564"W	0.64	
4270.00	3.770	350.370	4238.75	-10.78	406.99	-32.64	40°11'19.969"N	104°58'38.575"W	0.28	
4363.00	3.460	349.000	4331.57	-11.52	412.76	-33.69	40°11'20.026"N	104°58'38.588"W	0.35	
4457.00	3.220	4.120	4425.41	-11.58	418.18	-34.04	40°11'20.079"N	104°58'38.593"W	0.97	
4550.00	1.410	19.560	4518.33	-10.81	421.86	-33.47	40°11'20.116"N	104°58'38.585"W	2.04	
4643.00	1.010	27.950	4611.31	-9.95	423.66	-32.70	40°11'20.134"N	104°58'38.575"W	0.47	
4728.00	1.080	10.880	4696.30	-9.37	425.11	-32.20	40°11'20.148"N	104°58'38.569"W	0.37	
4813.00	1.260	43.150	4781.28	-8.50	426.58	-31.41	40°11'20.162"N	104°58'38.559"W	0.79	
4898.00	0.630	314.530	4866.27	-8.14	427.59	-31.10	40°11'20.172"N	104°58'38.555"W	1.64	
4983.00	0.960	260.520	4951.27	-9.16	427.80	-32.14	40°11'20.175"N	104°58'38.568"W	0.92	
5068.00	1.090	268.380	5036.25	-10.68	427.66	-33.65	40°11'20.173"N	104°58'38.588"W	0.22	
5154.00	0.800	279.060	5122.24	-12.08	427.73	-35.06	40°11'20.174"N	104°58'38.606"W	0.39	
5239.00	0.550	333.520	5207.23	-12.83	428.19	-35.83	40°11'20.178"N	104°58'38.616"W	0.77	
5324.00	0.440	58.850	5292.23	-12.70	428.72	-35.73	40°11'20.184"N	104°58'38.614"W	0.80	
5409.00	0.250	41.140	5377.23	-12.28	429.03	-35.33	40°11'20.187"N	104°58'38.609"W	0.25	
5579.00	0.260	27.660	5547.23	-11.83	429.65	-34.90	40°11'20.193"N	104°58'38.604"W	0.04	
5750.00	1.080	330.250	5718.22	-12.35	431.40	-35.52	40°11'20.210"N	104°58'38.612"W	0.56	
5835.00	0.810	351.170	5803.21	-12.77	432.68	-36.01	40°11'20.223"N	104°58'38.618"W	0.51	
5920.00	0.590	178.780	5888.20	-12.85	432.84	-36.10	40°11'20.224"N	104°58'38.619"W	1.64	
6090.00	0.290	30.910	6058.20	-12.64	432.34	-35.86	40°11'20.219"N	104°58'38.616"W	0.50	
6261.00	0.560	359.680	6229.20	-12.35	433.54	-35.64	40°11'20.231"N	104°58'38.613"W	0.20	
6601.00	1.310	325.540	6569.15	-14.30	438.41	-37.85	40°11'20.279"N	104°58'38.642"W	0.27	
6685.00	0.680	18.740	6653.14	-14.61	439.67	-38.23	40°11'20.292"N	104°58'38.647"W	1.25	
6770.00	8.230	117.560	6737.85	-9.18	437.33	-32.67	40°11'20.269"N	104°58'38.575"W	9.84	
6856.00	18.210	118.470	6821.46	7.61	428.05	-15.35	40°11'20.177"N	104°58'38.352"W	11.61	
6940.00	25.780	111.320	6899.31	35.48	415.13	13.25	40°11'20.049"N	104°58'37.983"W	9.54	
7025.00	32.350	99.480	6973.62	74.58	404.65	52.97	40°11'19.946"N	104°58'37.471"W	10.24	
7108.00	38.770	87.120	7041.20	122.36	402.29	100.94	40°11'19.922"N	104°58'36.853"W	11.58	
7192.00	45.610	84.240	7103.40	178.71	406.63	157.14	40°11'19.965"N	104°58'36.129"W	8.46	
7277.00	52.400	86.680	7159.14	242.80	411.63	221.06	40°11'20.015"N	104°58'35.306"W	8.28	
7363.00	61.040	91.030	7206.30	314.56	412.93	292.85	40°11'20.028"N	104°58'34.381"W	10.90	
7447.00	71.300	92.060	7240.19	391.04	410.84	369.55	40°11'20.007"N	104°58'33.392"W	12.27	
7533.00	78.690	88.920	7262.45	473.88	410.17	452.55	40°11'20.000"N	104°58'32.323"W	9.29	
7590.00	86.140	88.520	7269.97	530.31	411.43	509.00	40°11'20.013"N	104°58'31.595"W	13.09	
7643.00†	87.794	88.756	7272.77	583.21	412.69	561.90	40°11'20.025"N	104°58'30.914"W	3.15	7" CASING POINT
7673.00	88.730	88.890	7273.68	613.18	413.30	591.88	40°11'20.031"N	104°58'30.527"W	3.15	
7727.00	89.010	88.270	7274.74	667.15	414.64	645.86	40°11'20.044"N	104°58'29.832"W	1.26	
7896.00	89.040	87.800	7277.62	836.09	420.44	814.73	40°11'20.102"N	104°58'27.656"W	0.28	
7982.00	89.660	88.010	7278.60	922.08	423.58	900.67	40°11'20.133"N	104°58'26.549"W	0.76	
8067.00	89.870	89.250	7278.94	1007.04	425.61	985.64	40°11'20.153"N	104°58'25.454"W	1.48	
8237.00	90.030	89.180	7279.09	1176.90	427.94	1155.63	40°11'20.176"N	104°58'23.264"W	0.10	
8407.00	90.000	88.920	7279.05	1346.78	430.76	1325.60	40°11'20.203"N	104°58'21.073"W	0.15	
8577.00	89.780	88.360	7279.38	1516.71	434.79	1495.55	40°11'20.243"N	104°58'18.883"W	0.35	
8662.00	89.660	88.440	7279.79	1601.68	437.17	1580.52	40°11'20.267"N	104°58'17.789"W	0.17	
8748.00	88.640	89.620	7281.07	1687.61	438.62	1666.49	40°11'20.281"N	104°58'16.681"W	1.81	

REFERENCE WELLPATH IDENTIFICATION			
Operator	KERR-MCGEE OIL & GAS ONSHORE LP	Slot	SLOT#18 HANSEN STATE 26C-36HZ (711'FNL & 665'FWL, SEC.35)
Area	COLORADO	Well	HANSEN STATE 26C-36HZ
Field	WELD COUNTY (KERR MCGEE)	Wellbore	HANSEN STATE 26C-36HZ AWB
Facility	SEC.35-T3N-R68W		

WELLPATH DATA (175 stations)										
MD [ft]	Inclination [°]	Azimuth [°]	TVD [ft]	Vert Sect [ft]	North [ft]	East [ft]	Latitude	Longitude	DLS [°/100ft]	Comments
8833.00	89.500	90.400	7282.45	1772.47	438.61	1751.48	40°11'20.281"N	104°58'15.586"W	1.37	
8917.00	90.490	90.820	7282.45	1856.30	437.71	1835.48	40°11'20.272"N	104°58'14.503"W	1.28	
9087.00	90.460	89.830	7281.04	2025.99	436.75	2005.47	40°11'20.262"N	104°58'12.313"W	0.58	
9257.00	90.430	89.310	7279.72	2195.80	438.03	2175.45	40°11'20.275"N	104°58'10.123"W	0.31	
9433.00	90.300	88.890	7278.60	2371.67	440.79	2351.43	40°11'20.302"N	104°58'07.855"W	0.25	
9617.00	89.310	88.430	7279.23	2555.59	445.09	2535.37	40°11'20.344"N	104°58'05.485"W	0.59	
9801.00	89.930	88.030	7280.45	2739.53	450.78	2719.28	40°11'20.400"N	104°58'03.115"W	0.40	
9893.00	89.350	89.630	7281.03	2831.48	452.65	2811.26	40°11'20.419"N	104°58'01.930"W	1.85	
9984.00	89.160	89.640	7282.21	2922.37	453.23	2902.25	40°11'20.424"N	104°58'00.758"W	0.21	
10167.00	88.390	89.660	7286.12	3105.12	454.35	3085.20	40°11'20.435"N	104°57'58.400"W	0.42	
10351.00	90.960	90.270	7287.17	3288.84	454.46	3269.18	40°11'20.436"N	104°57'56.030"W	1.44	
10443.00	92.430	90.600	7284.44	3380.62	453.77	3361.14	40°11'20.429"N	104°57'54.845"W	1.64	
10535.00	92.270	89.820	7280.67	3472.40	453.43	3453.06	40°11'20.425"N	104°57'53.661"W	0.86	
10627.00	91.010	88.660	7278.04	3564.28	454.65	3545.01	40°11'20.437"N	104°57'52.476"W	1.86	
10719.00	90.000	89.130	7277.23	3656.22	456.42	3636.99	40°11'20.455"N	104°57'51.291"W	1.21	
10809.00	88.390	89.620	7278.49	3746.13	457.40	3726.97	40°11'20.464"N	104°57'50.131"W	1.87	
10901.00	89.130	88.690	7280.48	3838.03	458.76	3818.94	40°11'20.478"N	104°57'48.946"W	1.29	
11086.00	88.550	88.460	7284.23	4022.92	463.36	4003.84	40°11'20.523"N	104°57'46.564"W	0.34	
11179.00	89.320	89.370	7285.96	4115.84	465.12	4096.81	40°11'20.540"N	104°57'45.366"W	1.28	
11272.00	89.660	89.190	7286.79	4208.76	466.29	4189.79	40°11'20.551"N	104°57'44.168"W	0.41	
11365.00	88.520	88.080	7288.26	4301.71	468.51	4282.75	40°11'20.573"N	104°57'42.970"W	1.71	
11458.00	90.640	88.640	7288.94	4394.67	471.17	4375.71	40°11'20.599"N	104°57'41.772"W	2.36	
11551.00	90.730	88.630	7287.83	4487.62	473.38	4468.67	40°11'20.621"N	104°57'40.574"W	0.10	
11700.00	91.130	88.320	7285.41	4636.55	477.35	4617.60	40°11'20.660"N	104°57'38.655"W	0.34	
11793.00	91.660	88.140	7283.15	4729.50	480.22	4710.53	40°11'20.688"N	104°57'37.458"W	0.60	
11886.00	89.410	89.120	7282.28	4822.44	482.44	4803.49	40°11'20.710"N	104°57'36.260"W	2.64	
11979.00	88.520	87.340	7283.96	4915.40	485.31	4896.43	40°11'20.738"N	104°57'35.062"W	2.14	
12065.00	87.810	88.210	7286.72	5001.34	488.65	4982.32	40°11'20.771"N	104°57'33.956"W	1.31	
12150.00	88.330	89.970	7289.58	5086.23	490.00	5067.25	40°11'20.784"N	104°57'32.861"W	2.16	
12235.00	89.960	91.200	7290.85	5171.04	489.13	5152.24	40°11'20.775"N	104°57'31.766"W	2.40	
12320.00	91.010	90.390	7290.13	5255.85	487.95	5237.22	40°11'20.763"N	104°57'30.671"W	1.56	
12405.00	91.440	90.320	7288.31	5340.67	487.43	5322.20	40°11'20.758"N	104°57'29.576"W	0.51	
12490.00	91.660	90.510	7286.01	5425.49	486.81	5407.17	40°11'20.752"N	104°57'28.481"W	0.34	
12576.00	90.830	90.780	7284.14	5511.28	485.84	5493.14	40°11'20.742"N	104°57'27.374"W	1.01	
12661.00	89.500	89.170	7283.90	5596.16	485.88	5578.14	40°11'20.742"N	104°57'26.278"W	2.46	
12746.00	89.380	88.640	7284.73	5681.10	487.50	5663.12	40°11'20.758"N	104°57'25.183"W	0.64	
12831.00	89.840	89.440	7285.31	5766.04	488.93	5748.10	40°11'20.772"N	104°57'24.088"W	1.09	
12916.00	90.180	89.620	7285.29	5850.96	489.62	5833.10	40°11'20.779"N	104°57'22.993"W	0.45	
13001.00	90.580	89.180	7284.73	5935.87	490.51	5918.09	40°11'20.787"N	104°57'21.898"W	0.70	
13087.00	90.580	88.070	7283.86	6021.83	492.58	6004.06	40°11'20.807"N	104°57'20.790"W	1.29	
13172.00	90.400	89.220	7283.13	6106.79	494.59	6089.03	40°11'20.827"N	104°57'19.695"W	1.37	
13257.00	89.040	89.310	7283.55	6191.71	495.68	6174.02	40°11'20.838"N	104°57'18.600"W	1.60	
13342.00	88.980	89.250	7285.01	6276.63	496.75	6259.00	40°11'20.848"N	104°57'17.505"W	0.10	
13427.00	89.470	89.430	7286.16	6361.55	497.73	6343.99	40°11'20.857"N	104°57'16.410"W	0.61	
13513.00	90.180	90.250	7286.43	6447.43	497.97	6429.99	40°11'20.860"N	104°57'15.302"W	1.26	

REFERENCE WELLPATH IDENTIFICATION			
Operator	KERR-MCGEE OIL & GAS ONSHORE LP	Slot	SLOT#18 HANSEN STATE 26C-36HZ (711'FNL & 665'FWL, SEC.35)
Area	COLORADO	Well	HANSEN STATE 26C-36HZ
Field	WELD COUNTY (KERR MCGEE)	Wellbore	HANSEN STATE 26C-36HZ AWP
Facility	SEC.35-T3N-R68W		

WELLPATH DATA (175 stations)										
MD [ft]	Inclination [°]	Azimuth [°]	TVD [ft]	Vert Sect [ft]	North [ft]	East [ft]	Latitude	Longitude	DLS [°/100ft]	Comments
13598.00	90.210	90.070	7286.14	6532.30	497.73	6514.99	40°11'20.857"N	104°57'14.207"W	0.21	
13683.00	89.230	89.230	7286.55	6617.20	498.25	6599.98	40°11'20.862"N	104°57'13.112"W	1.52	
13768.00	88.760	88.340	7288.04	6702.14	500.05	6684.95	40°11'20.880"N	104°57'12.017"W	1.18	
13853.00	89.630	88.810	7289.24	6787.10	502.16	6769.91	40°11'20.900"N	104°57'10.922"W	1.16	
13938.00	90.520	88.820	7289.13	6872.05	503.92	6854.89	40°11'20.917"N	104°57'09.827"W	1.05	
14023.00	89.900	89.640	7288.82	6956.98	505.06	6939.88	40°11'20.928"N	104°57'08.732"W	1.21	
14108.00	89.530	90.310	7289.24	7041.86	505.10	7024.88	40°11'20.929"N	104°57'07.637"W	0.90	
14193.00	90.030	90.060	7289.56	7126.72	504.83	7109.88	40°11'20.926"N	104°57'06.541"W	0.66	
14278.00	91.750	90.680	7288.24	7211.55	504.28	7194.87	40°11'20.920"N	104°57'05.446"W	2.15	
14363.00	91.010	90.320	7286.20	7296.36	503.54	7279.84	40°11'20.912"N	104°57'04.351"W	0.97	
14448.00	90.400	89.890	7285.15	7381.22	503.38	7364.83	40°11'20.911"N	104°57'03.256"W	0.88	
14533.00	88.610	89.060	7285.89	7466.13	504.16	7449.82	40°11'20.918"N	104°57'02.161"W	2.32	
14618.00	89.470	88.420	7287.31	7551.08	506.03	7534.79	40°11'20.936"N	104°57'01.066"W	1.26	
14703.00	89.380	87.930	7288.16	7636.05	508.73	7619.74	40°11'20.963"N	104°56'59.972"W	0.59	
14788.00	88.790	88.680	7289.52	7721.02	511.25	7704.69	40°11'20.987"N	104°56'58.877"W	1.12	
14873.00	90.640	89.140	7289.94	7805.96	512.86	7789.67	40°11'21.003"N	104°56'57.782"W	2.24	
14958.00	89.690	88.700	7289.70	7890.91	514.47	7874.65	40°11'21.019"N	104°56'56.687"W	1.23	
15043.00	89.260	89.020	7290.48	7975.85	516.16	7959.63	40°11'21.035"N	104°56'55.592"W	0.63	
15128.00	88.390	88.800	7292.22	8060.78	517.77	8044.60	40°11'21.051"N	104°56'54.497"W	1.06	
15236.00	88.830	89.510	7294.84	8168.67	519.37	8152.55	40°11'21.066"N	104°56'53.106"W	0.77	
15321.00	89.470	89.910	7296.10	8253.56	519.80	8237.54	40°11'21.070"N	104°56'52.011"W	0.89	
15406.00	88.390	89.370	7297.69	8338.45	520.33	8322.52	40°11'21.075"N	104°56'50.916"W	1.42	
15491.00	89.350	89.580	7299.36	8423.35	521.11	8407.50	40°11'21.083"N	104°56'49.821"W	1.16	
15576.00	91.040	89.420	7299.08	8508.26	521.85	8492.49	40°11'21.090"N	104°56'48.726"W	2.00	
15661.00	91.380	90.520	7297.28	8593.12	521.90	8577.47	40°11'21.090"N	104°56'47.631"W	1.35	
15746.00	89.720	88.640	7296.46	8678.02	522.52	8662.46	40°11'21.096"N	104°56'46.536"W	2.95	
15831.00	90.950	88.660	7295.97	8762.97	524.52	8747.43	40°11'21.115"N	104°56'45.441"W	1.45	
15916.00	91.260	88.220	7294.33	8847.93	526.84	8832.39	40°11'21.138"N	104°56'44.346"W	0.63	
16002.00	91.200	87.910	7292.48	8933.89	529.74	8918.32	40°11'21.166"N	104°56'43.239"W	0.37	
16087.00	91.190	89.310	7290.71	9018.83	531.80	9003.27	40°11'21.186"N	104°56'42.144"W	1.65	
16172.00	91.230	90.160	7288.91	9103.71	532.19	9088.25	40°11'21.190"N	104°56'41.049"W	1.00	
16257.00	90.770	91.380	7287.43	9188.51	531.05	9173.23	40°11'21.178"N	104°56'39.954"W	1.53	
16342.00	90.090	90.860	7286.79	9273.28	529.39	9258.21	40°11'21.161"N	104°56'38.859"W	1.01	
16427.00	90.240	90.330	7286.55	9358.10	528.51	9343.20	40°11'21.152"N	104°56'37.764"W	0.65	
16513.00	90.000	90.520	7286.37	9443.94	527.87	9429.20	40°11'21.146"N	104°56'36.656"W	0.36	
16597.00	89.870	90.190	7286.46	9527.79	527.35	9513.20	40°11'21.140"N	104°56'35.574"W	0.42	
16683.00	90.000	90.390	7286.56	9613.64	526.91	9599.20	40°11'21.136"N	104°56'34.466"W	0.28	
16768.00	88.670	89.380	7287.55	9698.52	527.08	9684.19	40°11'21.137"N	104°56'33.371"W	1.96	
16887.00	87.650	89.140	7291.37	9817.36	528.62	9803.12	40°11'21.152"N	104°56'31.838"W	0.88	LAST BHI MWD+IFR SURVEY
16951.00	87.650	89.140	7293.99	9881.26	529.58	9867.06	40°11'21.161"N	104°56'31.014"W	0.00	PROJECTION TO BIT

REFERENCE WELLPATH IDENTIFICATION			
Operator	KERR-MCGEE OIL & GAS ONSHORE LP	Slot	SLOT#18 HANSEN STATE 26C-36HZ (711'FNL & 665'FWL, SEC.35)
Area	COLORADO	Well	HANSEN STATE 26C-36HZ
Field	WELD COUNTY (KERR MCGEE)	Wellbore	HANSEN STATE 26C-36HZ AWB
Facility	SEC.35-T3N-R68W		

HOLE & CASING SECTIONS - Ref Wellbore: HANSEN STATE 26C-36HZ AWB Ref Wellpath: HANSEN STATE 26C-36HZ AWP									
String/Diameter	Start MD [ft]	End MD [ft]	Interval [ft]	Start TVD [ft]	End TVD [ft]	Start N/S [ft]	Start E/W [ft]	End N/S [ft]	End E/W [ft]
13.5in Open Hole	16.00	1127.00	1111.00	16.00	1126.99	0.00	0.00	-2.49	-3.74
9.625in Casing Surface	16.00	1127.00	1111.00	16.00	1126.99	0.00	0.00	-2.49	-3.74
8.75in Open Hole	1127.00	7653.00	6526.00	1126.99	7273.13	-2.49	-3.74	412.90	571.90
7in Casing Intermediate	16.00	7643.00	7627.00	16.00	7272.77	0.00	0.00	412.69	561.90
6.125in Open Hole	7653.00	16951.00	9298.00	7273.13	7293.99	412.90	571.90	529.58	9867.06

WELLPATH COMPOSITION - Ref Wellbore: HANSEN STATE 26C-36HZ AWB Ref Wellpath: HANSEN STATE 26C-36HZ AWP				
Start MD [ft]	End MD [ft]	Positional Uncertainty Model	Log Name/Comment	Wellbore
16.00	1074.00	Generic gyro - continuous (Standard)	MS GYRO SURVEYS <116-1074>	HANSEN STATE 26C-36HZ AWB
1074.00	7590.00	NaviTrak (IFR)	BHI NAVITRAK MWD+IFR 8 3/4" <1183-7590>	HANSEN STATE 26C-36HZ AWB
7590.00	16887.00	NaviTrak (IFR)	BHI NAVITRAK MWD+IFR 6 1/8" <7673-16887>	HANSEN STATE 26C-36HZ AWB
16887.00	16951.00	Blind Drilling (std)	Projection to bit	HANSEN STATE 26C-36HZ AWB

REFERENCE WELLPATH IDENTIFICATION				
Operator	KERR-MCGEE OIL & GAS ONSHORE LP	Slot	SLOT#18 HANSEN STATE 26C-36HZ (711'FNL & 665'FWL, SEC.35)	
Area	COLORADO	Well	HANSEN STATE 26C-36HZ	
Field	WELD COUNTY (KERR MCGEE)	Wellbore	HANSEN STATE 26C-36HZ AWB	
Facility	SEC.35-T3N-R68W			

WELLPATH COMMENTS				
MD [ft]	Inclination [°]	Azimuth [°]	TVD [ft]	Comment
16.00	0.000	255.280	16.00	TIE ON
116.00	0.310	255.280	116.00	BEGIN GYRO SURVEYS
1074.00	0.170	232.700	1073.99	TIE ONTO GYRO SURVEYS
1183.00	0.360	250.240	1182.99	BEGIN GYRO MWD+IFR SURVEYS
7643.00	87.794	88.756	7272.77	7" CASING POINT
16887.00	87.650	89.140	7291.37	LAST BHI MWD+IFR SURVEY
16951.00	87.650	89.140	7293.99	PROJECTION TO BIT