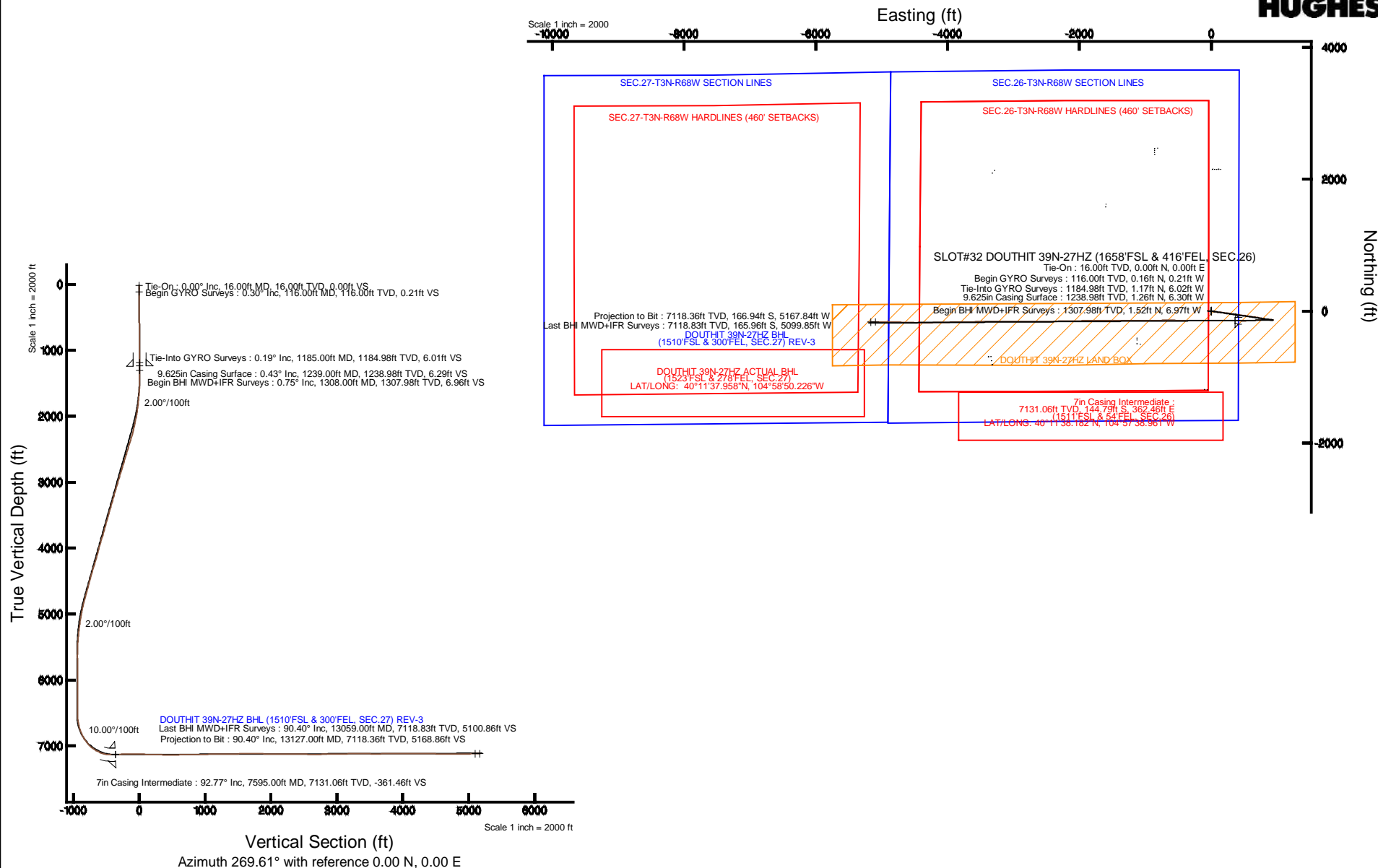


KERR-MCGEE OIL & GAS ONSHORE LP

Location: COLORADO Slot: SLOT#32 DOUTHIT 39N-27HZ (1658'FSL & 416'FEL, SEC.26)
 Field: WELD COUNTY (KERR MCGEE) Well: DOUTHIT 39N-27HZ
 Facility: SEC.26-T3N-R68W Wellbore: DOUTHIT 39N-27HZ PWB

Plot reference wellpath is DOUTHIT 39N-27HZ (REV-B.0) PWP

True vertical depths are referenced to XTREME 20 (16KB) (RKB)	Grid System: NAD83 / Lambert Colorado SP, Northern Zone (501), US feet
Measured depths are referenced to XTREME 20 (16KB) (RKB)	North Reference: True north
XTREME 20 (16KB) (RKB) to Mean Sea Level: 4941 feet	Scale: True distance
Mean Sea Level to Mud Line (At Slot: SLOT#32 DOUTHIT 39N-27HZ (1658'FSL & 416'FEL, SEC.26)): 0 feet	Depths are in feet
Coordinates are in feet referenced to Slot	Created by: precain on 11/21/2014



Actual Wellpath Report

DOUTHIT 39N-27HZ AWP

Page 1 of 7

REFERENCE WELLPATH IDENTIFICATION			
Operator	KERR-MCGEE OIL & GAS ONSHORE LP	Slot	SLOT#32 DOUTHIT 39N-27HZ (1658'FSL & 416'FEL, SEC.26)
Area	COLORADO	Well	DOUTHIT 39N-27HZ
Field	WELD COUNTY (KERR MCGEE)	Wellbore	DOUTHIT 39N-27HZ AWB
Facility	SEC.26-T3N-R68W		

REPORT SETUP INFORMATION			
Projection System	NAD83 / Lambert Colorado SP, Northern Zone (501), US feet	Software System	WellArchitect® 4.0.0
NorthReference	True	User	Precain
Scale	0.999957	Report Generated	11/20/2014 at 2:21:14 PM
Convergence at slot	n/a	Database/Source file	WellArchitectDB/DOUTHIT_39N-27HZ_AWB.xml

WELLPATH LOCATION						
	Local coordinates		Grid coordinates		Geographic coordinates	
	North[ft]	East[ft]	Easting[US ft]	Northing[US ft]	Latitude	Longitude
Slot Location	702.21	3346.83	3150258.68	1314095.22	40°11'39.613"N	104°57'43.632"W
Facility Reference Pt			3146916.23	1313373.21	40°11'32.676"N	104°58'26.760"W
Field Reference Pt			3197771.84	1268891.29	40°04'09.600"N	104°47'36.000"W

WELLPATH DATUM			
Calculation method	Minimum curvature	XTREME 20 (16'KB) (RKB) to Facility Vertical Datum	4941.00ft
Horizontal Reference Pt	Slot	XTREME 20 (16'KB) (RKB) to Mean Sea Level	4941.00ft
Vertical Reference Pt	XTREME 20 (16'KB) (RKB)	XTREME 20 (16'KB) (RKB) to Mud Line at Slot (SLOT#32 DOUTHIT 39N-27HZ (1658'FSL & 416'FEL, SEC.26))	4941.00ft
MD Reference Pt	XTREME 20 (16'KB) (RKB)	Section Origin	N 0.00, E 0.00 ft
Field Vertical Reference	Mean Sea Level	Section Azimuth	26961°

Actual Wellpath Report

DOUTHIT 39N-27HZ AWP

Page 2 of 7

REFERENCE WELLPATH IDENTIFICATION			
Operator	KERR-MCGEE OIL & GAS ONSHORE LP	Slot	SLOT#32 DOUTHIT 39N-27HZ (1658'FSL & 416'FEL, SEC.26)
Area	COLORADO	Well	DOUTHIT 39N-27HZ
Field	WELD COUNTY (KERR MCGEE)	Wellbore	DOUTHIT 39N-27HZ AWB
Facility	SEC.26-T3N-R68W		

WELLPATH DATA (153 stations) † = interpolated/extrapolated station										
MD [ft]	Inclination [°]	Azimuth [°]	TVD [ft]	Vert Sect [ft]	North [ft]	East [ft]	Latitude	Longitude	DLS [°/100ft]	Comments
0.00	0.000	307.820	0.00	0.00	0.00	0.00	40°11'39.613"N	104°57'43.632"W	0.00	
16.00	0.000	307.820	16.00	0.00	0.00	0.00	40°11'39.613"N	104°57'43.632"W	0.00	Tie-On
116.00	0.300	307.820	116.00	0.21	0.16	-0.21	40°11'39.615"N	104°57'43.635"W	0.30	Begin GYRO Surveys
216.00	0.230	283.580	216.00	0.61	0.37	-0.61	40°11'39.617"N	104°57'43.640"W	0.13	
316.00	0.220	215.290	316.00	0.91	0.26	-0.91	40°11'39.616"N	104°57'43.644"W	0.25	
416.00	0.250	259.140	416.00	1.24	0.06	-1.24	40°11'39.614"N	104°57'43.648"W	0.18	
516.00	0.270	260.760	516.00	1.69	-0.02	-1.69	40°11'39.613"N	104°57'43.654"W	0.02	
616.00	0.460	276.380	615.99	2.32	-0.01	-2.32	40°11'39.613"N	104°57'43.662"W	0.21	
716.00	0.430	300.650	715.99	3.04	0.22	-3.04	40°11'39.615"N	104°57'43.671"W	0.19	
816.00	0.420	291.220	815.99	3.70	0.55	-3.70	40°11'39.618"N	104°57'43.680"W	0.07	
916.00	0.450	290.940	915.99	4.41	0.82	-4.41	40°11'39.621"N	104°57'43.689"W	0.03	
1016.00	0.340	285.670	1015.98	5.06	1.04	-5.07	40°11'39.623"N	104°57'43.697"W	0.12	
1116.00	0.380	272.270	1115.98	5.67	1.14	-5.68	40°11'39.624"N	104°57'43.705"W	0.09	
1185.00	0.190	283.010	1184.98	6.01	1.17	-6.02	40°11'39.625"N	104°57'43.710"W	0.28	Tie-Into GYRO Surveys
1308.00	0.750	291.970	1307.98	6.96	1.52	-6.97	40°11'39.628"N	104°57'43.722"W	0.46	Begin BHI MWD+IFR Surveys
1402.00	0.450	98.610	1401.97	7.16	1.69	-7.17	40°11'39.630"N	104°57'43.724"W	1.27	
1496.00	1.550	96.530	1495.96	5.53	1.49	-5.55	40°11'39.628"N	104°57'43.703"W	1.17	
1590.00	3.020	101.760	1589.88	1.85	0.84	-1.86	40°11'39.621"N	104°57'43.656"W	1.58	
1684.00	4.440	104.600	1683.68	-4.08	-0.58	4.09	40°11'39.607"N	104°57'43.579"W	1.52	
1778.00	5.810	99.760	1777.30	-12.28	-2.30	12.30	40°11'39.590"N	104°57'43.474"W	1.53	
1872.00	7.880	101.180	1870.63	-23.28	-4.36	23.31	40°11'39.570"N	104°57'43.332"W	2.21	
1965.00	10.200	99.540	1962.47	-37.64	-6.96	37.69	40°11'39.544"N	104°57'43.146"W	2.51	
2059.00	11.540	97.190	2054.78	-55.16	-9.52	55.22	40°11'39.519"N	104°57'42.920"W	1.50	
2154.00	12.120	97.160	2147.76	-74.46	-11.95	74.55	40°11'39.495"N	104°57'42.671"W	0.61	
2248.00	14.440	94.500	2239.24	-95.93	-14.10	96.03	40°11'39.474"N	104°57'42.395"W	2.55	
2341.00	16.930	95.490	2328.77	-120.95	-16.30	121.07	40°11'39.452"N	104°57'42.072"W	2.69	
2435.00	16.620	97.650	2418.77	-147.88	-19.40	148.02	40°11'39.421"N	104°57'41.725"W	0.74	
2529.00	16.800	98.410	2508.80	-174.62	-23.18	174.78	40°11'39.384"N	104°57'41.380"W	0.30	
2623.00	17.500	96.880	2598.62	-202.06	-26.86	202.25	40°11'39.348"N	104°57'41.026"W	0.89	
2716.00	16.870	96.460	2687.47	-229.33	-30.05	229.54	40°11'39.316"N	104°57'40.674"W	0.69	
2810.00	17.200	96.560	2777.34	-256.67	-33.18	256.90	40°11'39.285"N	104°57'40.322"W	0.35	
2904.00	16.810	100.880	2867.24	-283.79	-37.33	284.06	40°11'39.244"N	104°57'39.972"W	1.41	
2993.00	17.130	99.530	2952.36	-309.33	-41.93	309.62	40°11'39.199"N	104°57'39.642"W	0.57	
3078.00	16.690	97.890	3033.69	-333.74	-45.68	334.06	40°11'39.162"N	104°57'39.327"W	0.76	
3163.00	16.110	97.800	3115.23	-357.49	-48.95	357.83	40°11'39.129"N	104°57'39.021"W	0.68	
3248.00	15.960	98.750	3196.92	-380.70	-52.33	381.06	40°11'39.096"N	104°57'38.722"W	0.36	
3333.00	15.990	97.920	3278.64	-403.82	-55.72	404.21	40°11'39.062"N	104°57'38.423"W	0.27	
3418.00	16.390	97.870	3360.27	-427.27	-58.98	427.68	40°11'39.030"N	104°57'38.121"W	0.47	
3503.00	16.140	96.080	3441.87	-450.88	-61.87	451.31	40°11'39.002"N	104°57'37.816"W	0.66	
3588.00	15.860	96.290	3523.58	-474.15	-64.39	474.61	40°11'38.977"N	104°57'37.516"W	0.34	
3673.00	15.650	95.810	3605.38	-497.09	-66.83	497.56	40°11'38.953"N	104°57'37.220"W	0.29	
3758.00	15.300	99.090	3687.30	-519.55	-69.76	520.04	40°11'38.924"N	104°57'36.931"W	1.11	
3843.00	16.590	101.680	3769.03	-542.48	-73.99	542.99	40°11'38.882"N	104°57'36.635"W	1.73	
3928.00	17.010	100.340	3850.40	-566.56	-78.68	567.11	40°11'38.835"N	104°57'36.324"W	0.67	
4014.00	17.300	96.720	3932.58	-591.61	-82.43	592.18	40°11'38.798"N	104°57'36.001"W	1.29	

Actual Wellpath Report

DOUTHIT 39N-27HZ AWP

Page 3 of 7

REFERENCE WELLPATH IDENTIFICATION			
Operator	KERR-MCGEE OIL & GAS ONSHORE LP	Slot	SLOT#32 DOUTHIT 39N-27HZ (1658'FSL & 416'FEL, SEC.26)
Area	COLORADO	Well	DOUTHIT 39N-27HZ
Field	WELD COUNTY (KERR MCGEE)	Wellbore	DOUTHIT 39N-27HZ AWB
Facility	SEC.26-T3N-R68W		

WELLPATH DATA (153 stations)										
MD [ft]	Inclination [°]	Azimuth [°]	TVD [ft]	Vert Sect [ft]	North [ft]	East [ft]	Latitude	Longitude	DLS [°/100ft]	Comments
4099.00	14.260	94.130	4014.37	-614.59	-84.66	615.18	40°11'38.776"N	104°57'35.705"W	3.67	
4184.00	14.490	98.650	4096.71	-635.53	-87.02	636.14	40°11'38.753"N	104°57'35.435"W	1.35	
4269.00	16.940	97.100	4178.53	-658.31	-90.15	658.94	40°11'38.722"N	104°57'35.141"W	2.92	
4354.00	17.300	98.790	4259.76	-683.07	-93.61	683.72	40°11'38.688"N	104°57'34.821"W	0.72	
4439.00	17.140	102.550	4340.95	-707.75	-98.26	708.44	40°11'38.642"N	104°57'34.503"W	1.32	
4525.00	16.470	102.120	4423.28	-732.00	-103.58	732.73	40°11'38.589"N	104°57'34.190"W	0.79	
4610.00	14.990	102.310	4505.09	-754.49	-108.45	755.25	40°11'38.541"N	104°57'33.900"W	1.74	
4695.00	14.790	102.840	4587.24	-775.78	-113.20	776.57	40°11'38.494"N	104°57'33.625"W	0.28	
4780.00	15.780	98.640	4669.23	-797.75	-117.35	798.57	40°11'38.453"N	104°57'33.341"W	1.75	
4865.00	16.640	101.020	4750.85	-821.10	-121.41	821.95	40°11'38.413"N	104°57'33.040"W	1.28	
4950.00	13.430	101.640	4832.93	-842.69	-125.73	843.57	40°11'38.370"N	104°57'32.762"W	3.78	
5035.00	11.920	97.420	4915.86	-861.04	-128.86	861.94	40°11'38.339"N	104°57'32.525"W	2.08	
5120.00	10.990	101.190	4999.17	-877.67	-131.57	878.59	40°11'38.313"N	104°57'32.310"W	1.40	
5206.00	8.800	99.030	5083.89	-892.20	-134.19	893.13	40°11'38.287"N	104°57'32.123"W	2.58	
5291.00	8.240	96.580	5167.95	-904.66	-135.91	905.61	40°11'38.270"N	104°57'31.962"W	0.78	
5376.00	6.130	95.580	5252.28	-915.22	-137.05	916.17	40°11'38.259"N	104°57'31.826"W	2.49	
5461.00	5.480	94.930	5336.84	-923.77	-137.84	924.73	40°11'38.251"N	104°57'31.716"W	0.77	
5546.00	3.740	92.470	5421.56	-930.58	-138.31	931.55	40°11'38.246"N	104°57'31.628"W	2.06	
5631.00	2.480	96.810	5506.43	-935.18	-138.64	936.14	40°11'38.243"N	104°57'31.569"W	1.51	
5716.00	1.190	39.020	5591.39	-937.56	-138.17	938.53	40°11'38.247"N	104°57'31.538"W	2.47	
5801.00	0.520	255.180	5676.39	-937.75	-137.59	938.71	40°11'38.253"N	104°57'31.536"W	1.93	
5971.00	0.660	183.480	5846.38	-936.94	-138.76	937.90	40°11'38.242"N	104°57'31.546"W	0.41	
6057.00	0.850	210.900	5932.38	-936.57	-139.80	937.55	40°11'38.231"N	104°57'31.551"W	0.47	
6227.00	0.580	228.840	6102.36	-935.26	-141.45	936.25	40°11'38.215"N	104°57'31.567"W	0.20	
6397.00	0.840	286.080	6272.35	-933.42	-141.67	934.41	40°11'38.213"N	104°57'31.591"W	0.42	
6482.00	1.220	25.430	6357.34	-933.21	-140.68	934.20	40°11'38.223"N	104°57'31.594"W	1.87	
6567.00	1.370	355.640	6442.32	-933.54	-138.85	934.51	40°11'38.241"N	104°57'31.590"W	0.80	
6652.00	0.770	51.980	6527.31	-933.92	-137.49	934.88	40°11'38.254"N	104°57'31.585"W	1.34	
6695.00	3.680	296.790	6570.28	-932.92	-136.69	933.88	40°11'38.262"N	104°57'31.598"W	9.46	
6737.00	7.320	285.180	6612.08	-929.14	-135.38	930.09	40°11'38.275"N	104°57'31.647"W	9.02	
6780.00	11.030	284.540	6654.52	-922.53	-133.63	923.46	40°11'38.292"N	104°57'31.732"W	8.63	
6823.00	13.190	278.750	6696.57	-913.71	-131.85	914.63	40°11'38.310"N	104°57'31.846"W	5.76	
6866.00	16.510	277.000	6738.12	-902.80	-130.36	903.71	40°11'38.325"N	104°57'31.987"W	7.79	
6906.00	20.180	275.120	6776.08	-890.29	-129.05	891.19	40°11'38.338"N	104°57'32.148"W	9.29	
6948.00	24.890	273.020	6814.87	-874.25	-127.94	875.14	40°11'38.349"N	104°57'32.355"W	11.38	
6995.00	28.100	268.700	6856.93	-853.30	-127.67	854.19	40°11'38.351"N	104°57'32.625"W	7.96	
7038.00	32.210	267.970	6894.10	-831.71	-128.30	832.61	40°11'38.345"N	104°57'32.903"W	9.60	
7081.00	35.890	267.690	6929.72	-807.65	-129.22	808.55	40°11'38.336"N	104°57'33.213"W	8.57	
7124.00	40.800	266.810	6963.44	-781.01	-130.51	781.92	40°11'38.323"N	104°57'33.556"W	11.49	
7166.00	45.140	264.420	6994.16	-752.46	-132.72	753.38	40°11'38.301"N	104°57'33.924"W	11.04	
7209.00	50.530	264.300	7023.02	-720.73	-135.85	721.68	40°11'38.270"N	104°57'34.332"W	12.54	
7251.00	54.560	265.810	7048.56	-687.51	-138.71	688.47	40°11'38.242"N	104°57'34.760"W	10.01	
7294.00	60.280	266.200	7071.70	-651.36	-141.23	652.34	40°11'38.217"N	104°57'35.226"W	13.32	
7336.00	64.930	267.770	7091.02	-614.12	-143.18	615.11	40°11'38.198"N	104°57'35.706"W	11.56	
7379.00	70.220	267.620	7107.42	-574.41	-144.78	575.41	40°11'38.182"N	104°57'36.217"W	12.31	

Actual Wellpath Report

DOUTHIT 39N-27HZ AWP

Page 4 of 7

REFERENCE WELLPATH IDENTIFICATION			
Operator	KERR-MCGEE OIL & GAS ONSHORE LP	Slot	SLOT#32 DOUTHIT 39N-27HZ (1658'FSL & 416'FEL, SEC.26)
Area	COLORADO	Well	DOUTHIT 39N-27HZ
Field	WELD COUNTY (KERR MCGEE)	Wellbore	DOUTHIT 39N-27HZ AWB
Facility	SEC.26-T3N-R68W		

WELLPATH DATA (153 stations) † = interpolated/extrapolated station										
MD [ft]	Inclination [°]	Azimuth [°]	TVD [ft]	Vert Sect [ft]	North [ft]	East [ft]	Latitude	Longitude	DLS [°/100ft]	Comments
7421.00	75.540	268.410	7119.78	-534.30	-146.17	535.31	40°11'38.169"N	104°57'36.734"W	12.79	
7464.00	81.610	270.160	7128.29	-492.17	-146.69	493.19	40°11'38.163"N	104°57'37.277"W	14.67	
7506.00	87.320	270.670	7132.34	-450.39	-146.38	451.40	40°11'38.166"N	104°57'37.815"W	13.65	
7542.00	91.080	270.390	7132.84	-414.41	-146.05	415.41	40°11'38.170"N	104°57'38.279"W	10.47	
7595.00†	92.771	272.341	7131.06	-361.46	-144.79	362.46	40°11'38.182"N	104°57'38.961"W	4.87	7" Casing Point
7605.00	93.090	272.710	7130.55	-351.49	-144.35	352.48	40°11'38.187"N	104°57'39.090"W	4.87	
7690.00	92.640	270.240	7126.30	-266.65	-142.16	267.63	40°11'38.208"N	104°57'40.183"W	2.95	
7775.00	91.790	269.900	7123.02	-181.72	-142.06	182.69	40°11'38.209"N	104°57'41.278"W	1.08	
7860.00	90.090	269.980	7121.62	-96.73	-142.15	97.70	40°11'38.208"N	104°57'42.373"W	2.00	
7945.00	87.780	269.280	7123.20	-11.75	-142.70	12.73	40°11'38.203"N	104°57'43.468"W	2.84	
8030.00	88.400	269.740	7126.04	73.20	-143.42	-72.22	40°11'38.196"N	104°57'44.563"W	0.91	
8117.00	88.060	270.180	7128.72	160.16	-143.48	-159.18	40°11'38.195"N	104°57'45.683"W	0.64	
8202.00	88.800	270.670	7131.05	245.11	-142.85	-244.14	40°11'38.201"N	104°57'46.778"W	1.04	
8287.00	88.650	269.800	7132.94	330.09	-142.51	-329.12	40°11'38.205"N	104°57'47.873"W	1.04	
8372.00	89.690	271.050	7134.18	415.07	-141.88	-414.11	40°11'38.211"N	104°57'48.968"W	1.91	
8457.00	90.490	271.120	7134.04	500.04	-140.27	-499.09	40°11'38.227"N	104°57'50.063"W	0.94	
8542.00	90.220	271.050	7133.52	585.01	-138.66	-584.08	40°11'38.243"N	104°57'51.158"W	0.33	
8627.00	90.490	269.460	7132.99	670.00	-138.28	-669.07	40°11'38.246"N	104°57'52.254"W	1.90	
8712.00	89.880	268.830	7132.71	754.99	-139.55	-754.06	40°11'38.234"N	104°57'53.349"W	1.03	
8797.00	91.630	270.150	7131.59	839.98	-140.30	-839.04	40°11'38.226"N	104°57'54.444"W	2.58	
8882.00	91.440	269.990	7129.32	924.95	-140.20	-924.01	40°11'38.227"N	104°57'55.539"W	0.29	
8968.00	91.290	269.840	7127.27	1010.92	-140.33	-1009.99	40°11'38.226"N	104°57'56.647"W	0.25	
9053.00	91.010	269.800	7125.56	1095.90	-140.59	-1094.97	40°11'38.223"N	104°57'57.742"W	0.33	
9308.00	90.520	270.010	7122.16	1350.88	-141.02	-1349.95	40°11'38.219"N	104°58'01.028"W	0.21	
9478.00	91.380	270.590	7119.34	1520.84	-140.13	-1519.92	40°11'38.228"N	104°58'03.218"W	0.61	
9563.00	89.900	269.740	7118.39	1605.83	-139.88	-1604.91	40°11'38.230"N	104°58'04.313"W	2.01	
9648.00	91.070	269.930	7117.67	1690.82	-140.13	-1689.90	40°11'38.228"N	104°58'05.408"W	1.39	
9734.00	89.470	268.500	7117.27	1776.81	-141.30	-1775.89	40°11'38.216"N	104°58'06.516"W	2.50	
9818.00	88.510	268.300	7118.75	1860.78	-143.65	-1859.84	40°11'38.193"N	104°58'07.598"W	1.17	
9904.00	89.010	268.720	7120.61	1946.74	-145.89	-1945.79	40°11'38.171"N	104°58'08.706"W	0.76	
10074.00	90.800	269.470	7120.89	2116.73	-148.57	-2115.76	40°11'38.144"N	104°58'10.896"W	1.14	
10159.00	89.540	268.620	7120.64	2201.72	-149.99	-2200.75	40°11'38.130"N	104°58'11.991"W	1.79	
10329.00	88.770	268.450	7123.14	2371.67	-154.33	-2370.67	40°11'38.087"N	104°58'14.181"W	0.46	
10414.00	89.070	268.910	7124.75	2456.65	-156.29	-2455.64	40°11'38.067"N	104°58'15.276"W	0.65	
10499.00	88.800	269.160	7126.33	2541.63	-157.72	-2540.61	40°11'38.053"N	104°58'16.371"W	0.43	
10585.00	89.600	269.490	7127.53	2627.62	-158.73	-2626.59	40°11'38.043"N	104°58'17.479"W	1.01	
10670.00	90.990	270.050	7127.09	2712.61	-159.08	-2711.59	40°11'38.040"N	104°58'18.574"W	1.76	
10755.00	90.400	270.360	7126.06	2797.60	-158.77	-2796.58	40°11'38.042"N	104°58'19.669"W	0.78	
10840.00	89.820	270.520	7125.89	2882.59	-158.12	-2881.58	40°11'38.049"N	104°58'20.764"W	0.71	
10925.00	90.800	270.590	7125.43	2967.58	-157.30	-2966.57	40°11'38.057"N	104°58'21.860"W	1.16	
11009.00	92.030	270.690	7123.36	3051.54	-156.36	-3050.54	40°11'38.066"N	104°58'22.942"W	1.47	
11095.00	91.850	270.450	7120.45	3137.48	-155.50	-3136.49	40°11'38.074"N	104°58'24.049"W	0.35	
11180.00	90.310	269.190	7118.85	3222.46	-155.77	-3221.47	40°11'38.072"N	104°58'25.144"W	2.34	
11350.00	89.850	269.130	7118.61	3392.45	-158.26	-3391.45	40°11'38.047"N	104°58'27.335"W	0.27	
11435.00	89.510	269.320	7119.08	3477.45	-159.41	-3476.44	40°11'38.035"N	104°58'28.430"W	0.46	

Actual Wellpath Report

DOUTHIT 39N-27HZ AWP

Page 5 of 7

REFERENCE WELLPATH IDENTIFICATION			
Operator	KERR-MCGEE OIL & GAS ONSHORE LP	Slot	SLOT#32 DOUTHIT 39N-27HZ (1658'FSL & 416'FEL, SEC.26)
Area	COLORADO	Well	DOUTHIT 39N-27HZ
Field	WELD COUNTY (KERR MCGEE)	Wellbore	DOUTHIT 39N-27HZ AWB
Facility	SEC.26-T3N-R68W		

WELLPATH DATA (153 stations)										
MD [ft]	Inclination [°]	Azimuth [°]	TVD [ft]	Vert Sect [ft]	North [ft]	East [ft]	Latitude	Longitude	DLS [°/100ft]	Comments
11521.00	89.350	269.640	7119.94	3563.44	-160.19	-3562.43	40°11'38.027"N	104°58'29.538"W	0.42	
11606.00	90.800	269.060	7119.83	3648.44	-161.16	-3647.42	40°11'38.018"N	104°58'30.633"W	1.84	
11691.00	90.990	268.800	7118.50	3733.42	-162.74	-3732.40	40°11'38.002"N	104°58'31.728"W	0.38	
11776.00	90.890	268.840	7117.11	3818.40	-164.49	-3817.37	40°11'37.985"N	104°58'32.823"W	0.13	
11946.00	91.290	268.890	7113.87	3988.36	-167.86	-3987.30	40°11'37.951"N	104°58'35.013"W	0.24	
12031.00	89.590	268.730	7113.22	4073.34	-169.63	-4072.28	40°11'37.933"N	104°58'36.108"W	2.01	
12118.00	89.100	268.150	7114.21	4160.32	-171.99	-4159.24	40°11'37.910"N	104°58'37.229"W	0.87	
12203.00	89.500	268.090	7115.25	4245.28	-174.78	-4244.19	40°11'37.882"N	104°58'38.323"W	0.48	
12288.00	88.850	268.980	7116.48	4330.26	-176.96	-4329.15	40°11'37.861"N	104°58'39.418"W	1.30	
12373.00	89.260	271.170	7117.88	4415.24	-176.84	-4414.13	40°11'37.862"N	104°58'40.513"W	2.62	
12458.00	88.670	271.610	7119.41	4500.18	-174.78	-4499.10	40°11'37.882"N	104°58'41.608"W	0.87	
12543.00	89.100	272.000	7121.07	4585.10	-172.11	-4584.04	40°11'37.908"N	104°58'42.703"W	0.68	
12628.00	90.270	271.970	7121.54	4670.03	-169.16	-4668.98	40°11'37.937"N	104°58'43.797"W	1.38	
12713.00	90.460	272.410	7120.99	4754.94	-165.91	-4753.92	40°11'37.969"N	104°58'44.892"W	0.56	
12798.00	90.060	270.930	7120.61	4839.88	-163.44	-4838.88	40°11'37.993"N	104°58'45.987"W	1.80	
12883.00	90.490	269.140	7120.20	4924.87	-163.38	-4923.87	40°11'37.994"N	104°58'47.082"W	2.17	
13059.00	90.400	269.180	7118.83	5100.86	-165.96	-5099.85	40°11'37.968"N	104°58'49.349"W	0.06	Last BHI MWD+IFR Surveys
13127.00	90.400	269.180	7118.36	5168.86	-166.94	-5167.84	40°11'37.958"N	104°58'50.226"W	0.00	Projection to Bit

HOLE & CASING SECTIONS - Ref Wellbore: DOUTHIT 39N-27HZ AWB Ref Wellpath: DOUTHIT 39N-27HZ AWP									
String/Diameter	Start MD [ft]	End MD [ft]	Interval [ft]	Start TVD [ft]	End TVD [ft]	Start N/S [ft]	Start E/W [ft]	End N/S [ft]	End E/W [ft]
13.5in Open Hole	16.00	1250.00	1234.00	16.00	1249.98	0.00	0.00	1.29	-6.39
9.625in Casing Surface	16.00	1239.00	1223.00	16.00	1238.98	0.00	0.00	1.26	-6.30
8.75in Open Hole	1250.00	7605.00	6355.00	1249.98	7130.55	1.29	-6.39	-144.35	352.48
7in Casing Intermediate	16.00	7595.00	7579.00	16.00	7131.06	0.00	0.00	-144.79	362.46
6.125in Open Hole	7605.00	13127.00	5522.00	7130.55	7118.36	-144.35	352.48	-166.94	-5167.84

Actual Wellpath Report

DOUTHIT 39N-27HZ AWP

Page 6 of 7

REFERENCE WELLPATH IDENTIFICATION			
Operator	KERR-MCGEE OIL & GAS ONSHORE LP	Slot	SLOT#32 DOUTHIT 39N-27HZ (1658'FSL & 416'FEL, SEC.26)
Area	COLORADO	Well	DOUTHIT 39N-27HZ
Field	WELD COUNTY (KERR MCGEE)	Wellbore	DOUTHIT 39N-27HZ AWB
Facility	SEC.26-T3N-R68W		

TARGETS									
Name	MD [ft]	TVD [ft]	North [ft]	East [ft]	Grid East [US ft]	Grid North [US ft]	Latitude	Longitude	Shape
SEC.26-T3N-R68W HARDLINES (460' SETBACKS)		-18.00	2152.30	141.92	3150387.54	1316248.25	40°12'00.882"N	104°57'41.803"W	polygon
SEC.26-T3N-R68W SECTION LINES		-18.00	2152.30	141.92	3150387.54	1316248.25	40°12'00.882"N	104°57'41.803"W	polygon
SEC.27-T3N-R68W HARDLINES (460' SETBACKS)		-18.00	2152.30	141.92	3150387.54	1316248.25	40°12'00.882"N	104°57'41.803"W	polygon
SEC.27-T3N-R68W SECTION LINES		-18.00	2152.30	141.92	3150387.54	1316248.25	40°12'00.882"N	104°57'41.803"W	polygon
DOUTHIT 39N-27HZ BHL (1510'FSL & 300'FEL, SEC.27) REV-2		7039.00	-179.47	-5192.65	3145067.45	1313884.27	40°11'37.834"N	104°58'50.545"W	point
DOUTHIT 39N-27HZ BHL ON PLAT (1470'FSL & 300'FEL, SEC.27) REV-1		7039.00	-219.47	-5192.65	3145067.69	1313844.27	40°11'37.439"N	104°58'50.545"W	point
DOUTHIT 39N-27HZ LAND BOX		7040.00	0.00	0.00	3150258.68	1314095.22	40°11'39.613"N	104°57'43.632"W	polygon
DOUTHIT 39N-27HZ BHL (1510'FSL & 300'FEL, SEC.27) REV-3		7111.00	-179.47	-5192.65	3145067.45	1313884.27	40°11'37.834"N	104°58'50.545"W	point

WELLPATH COMPOSITION - Ref Wellbore: DOUTHIT 39N-27HZ AWB					Ref Wellpath: DOUTHIT 39N-27HZ AWP	
Start MD [ft]	End MD [ft]	Positional Uncertainty Model	Log Name/Comment		Wellbore	
16.00	1185.00	Generic gyro - continuous (Standard)	MS ENERGY GYRO SURVEYS <116-1185>		DOUTHIT 39N-27HZ AWB	
1185.00	7542.00	NaviTrak (IFR)	BHI MWD+IFR SURVEYS 8 3/4" HOLE <1308-7542>		DOUTHIT 39N-27HZ AWB	
7542.00	13059.00	NaviTrak (IFR)	BHI MWD+IFR SURVEYS 6 1/8" HOLE <7605-13059>		DOUTHIT 39N-27HZ AWB	
13059.00	13127.00	Blind Drilling (std)	Projection to bit		DOUTHIT 39N-27HZ AWB	

REFERENCE WELLPATH IDENTIFICATION			
Operator	KERR-MCGEE OIL & GAS ONSHORE LP	Slot	SLOT#32 DOUTHIT 39N-27HZ (1658'FSL & 416'FEL, SEC.26)
Area	COLORADO	Well	DOUTHIT 39N-27HZ
Field	WELD COUNTY (KERR MCGEE)	Wellbore	DOUTHIT 39N-27HZ AWB
Facility	SEC.26-T3N-R68W		

WELLPATH COMMENTS				
MD [ft]	Inclination [°]	Azimuth [°]	TVD [ft]	Comment
16.00	0.000	307.820	16.00	Tie-On
116.00	0.300	307.820	116.00	Begin GYRO Surveys
1185.00	0.190	283.010	1184.98	Tie-Into GYRO Surveys
1308.00	0.750	291.970	1307.98	Begin BHI MWD+IFR Surveys
7595.00	92.771	272.341	7131.06	7" Casing Point
13059.00	90.400	269.180	7118.83	Last BHI MWD+IFR Surveys
13127.00	90.400	269.180	7118.36	Projection to Bit