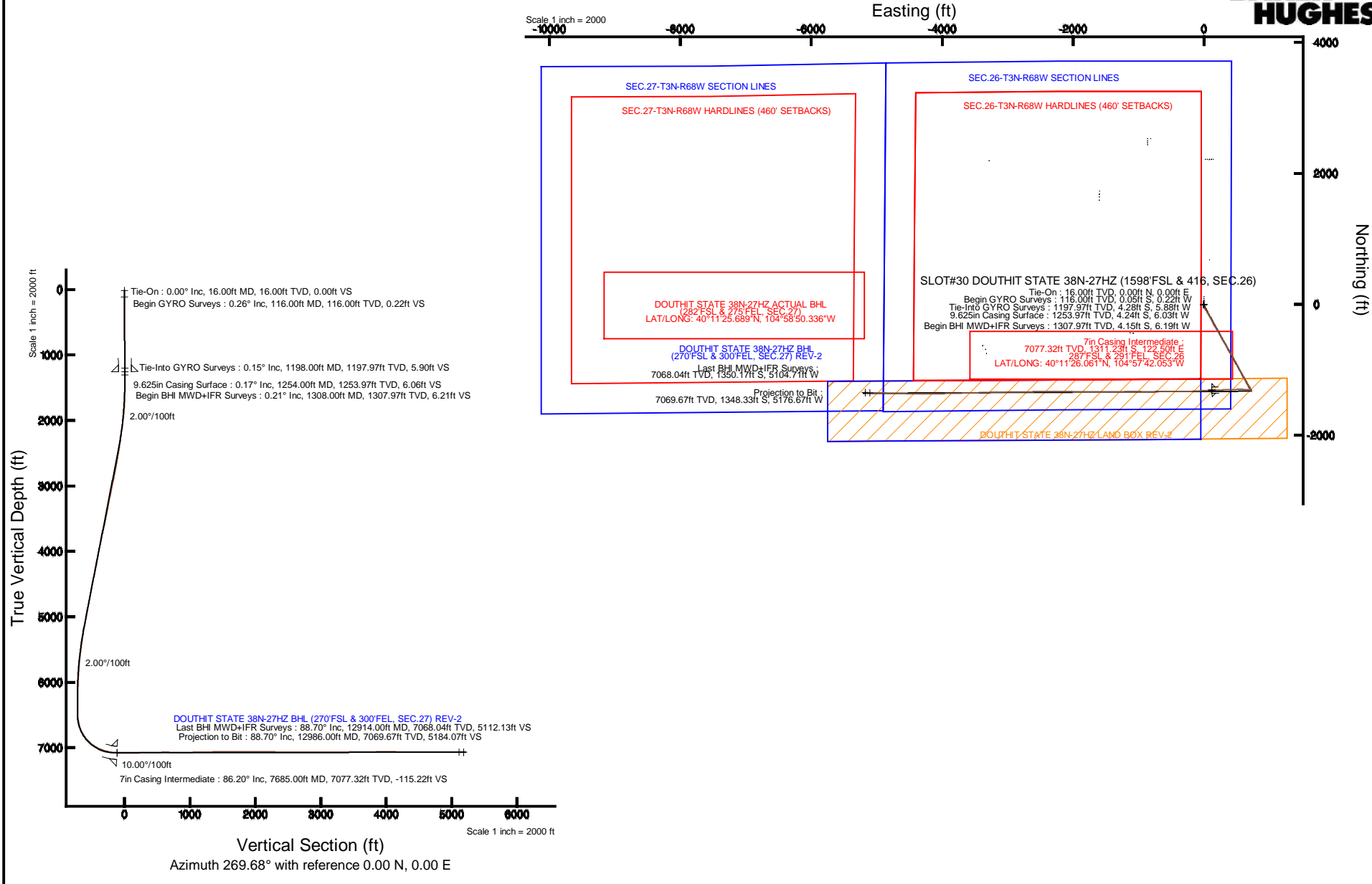


KERR-MCGEE OIL & GAS ONSHORE LP

Location: COLORADO Slot: SLOT#30 DOUTHIT STATE 38N-27HZ (1598'FSL & 416, SEC.26)
 Field: WELD COUNTY (KERR MCGEE) Well: DOUTHIT STATE 38N-27HZ
 Facility: SEC.26-T3N-R68W Wellbore: DOUTHIT STATE 38N-27HZ PWB

Plot reference wellpath is DOUTHIT STATE 38N-27HZ (REV-B.0) PWB

True vertical depths are referenced to XTREME 20 (16KB) (RKB)	Grid System: NAD83 / Lambert Colorado SP, Northern Zone (501), US feet
Measured depths are referenced to XTREME 20 (16KB) (RKB)	North Reference: True north
XTREME 20 (16KB) (RKB) to Mean Sea Level: 4941 feet	Scale: True distance
Mean Sea Level to Mud line (At Slot: SLOT#30 DOUTHIT STATE 38N-27HZ (1598'FSL & 416, SEC.26)): 0 feet	Depths are in feet
Coordinates are in feet referenced to Slot	Created by: precalin on 11/20/2014



REFERENCE WELLPATH IDENTIFICATION			
Operator	KERR-MCGEE OIL & GAS ONSHORE LP	Slot	SLOT#30 DOUTHIT STATE 38N-27HZ (1598'FSL & 416, SEC.26)
Area	COLORADO	Well	DOUTHIT STATE 38N-27HZ
Field	WELD COUNTY (KERR MCGEE)	Wellbore	DOUTHIT STATE 38N-27HZ AWB
Facility	SEC.26-T3N-R68W		

REPORT SETUP INFORMATION			
Projection System	NAD83 / Lambert Colorado SP, Northern Zone (501), US feet	Software System	WellArchitect® 4.0.0
North Reference	True	User	Precain
Scale	0.999957	Report Generated	11/20/2014 at 2:08:08 PM
Convergence at slot	n/a	Database/Source file	WellArchitectDB/DOUTHIT_STATE_38N-27HZ_AWB.xml

WELLPATH LOCATION						
	Local coordinates		Grid coordinates		Geographic coordinates	
	North[ft]	East[ft]	Easting[US ft]	Northing[US ft]	Latitude	Longitude
Slot Location	642.10	3346.83	3150259.05	1314035.12	40°11'39.019"N	104°57'43.632"W
Facility Reference Pt			3146916.23	1313373.21	40°11'32.676"N	104°58'26.760"W
Field Reference Pt			3197771.84	1268891.29	40°04'09.600"N	104°47'36.000"W

WELLPATH DATUM			
Calculation method	Minimum curvature	XTREME 20 (16'KB) (RKB) to Facility Vertical Datum	4941.00ft
Horizontal Reference Pt	Slot	XTREME 20 (16'KB) (RKB) to Mean Sea Level	4941.00ft
Vertical Reference Pt	XTREME 20 (16'KB) (RKB)	XTREME 20 (16'KB) (RKB) to Mud Line at Slot (SLOT#30 DOUTHIT STATE 38N-27HZ (1598'FSL & 416, SEC.26))	4941.00ft
MD Reference Pt	XTREME 20 (16'KB) (RKB)	Section Origin	N 0.00, E 0.00 ft
Field Vertical Reference	Mean Sea Level	Section Azimuth	269.68°

REFERENCE WELLPATH IDENTIFICATION			
Operator	KERR-MCGEE OIL & GAS ONSHORE LP	Slot	SLOT#30 DOUTHIT STATE 38N-27HZ (1598' FSL & 416, SEC.26)
Area	COLORADO	Well	DOUTHIT STATE 38N-27HZ
Field	WELD COUNTY (KERR MCGEE)	Wellbore	DOUTHIT STATE 38N-27HZ AWB
Facility	SEC.26-T3N-R68W		

WELLPATH DATA (159 stations) † = interpolated/extrapolated station										
MD [ft]	Inclination [°]	Azimuth [°]	TVD [ft]	Vert Sect [ft]	North [ft]	East [ft]	Latitude	Longitude	DLS [°/100ft]	Comments
0.00†	0.000	257.710	0.00	0.00	0.00	0.00	40°11'39.019"N	104°57'43.632"W	0.00	
16.00	0.000	257.710	16.00	0.00	0.00	0.00	40°11'39.019"N	104°57'43.632"W	0.00	Tie-On
116.00	0.260	257.710	116.00	0.22	-0.05	-0.22	40°11'39.019"N	104°57'43.635"W	0.26	Begin GYRO Surveys
216.00	0.170	234.920	216.00	0.57	-0.18	-0.56	40°11'39.017"N	104°57'43.639"W	0.12	
316.00	0.430	232.200	316.00	0.99	-0.50	-0.98	40°11'39.014"N	104°57'43.645"W	0.26	
416.00	0.420	218.230	415.99	1.51	-1.02	-1.51	40°11'39.009"N	104°57'43.651"W	0.10	
516.00	0.530	231.860	515.99	2.11	-1.59	-2.10	40°11'39.003"N	104°57'43.659"W	0.16	
616.00	0.580	223.560	615.99	2.82	-2.24	-2.81	40°11'38.997"N	104°57'43.668"W	0.09	
716.00	0.480	223.280	715.98	3.46	-2.91	-3.45	40°11'38.990"N	104°57'43.676"W	0.10	
816.00	0.310	233.770	815.98	3.97	-3.38	-3.95	40°11'38.986"N	104°57'43.683"W	0.18	
916.00	0.440	243.580	915.98	4.53	-3.71	-4.51	40°11'38.982"N	104°57'43.690"W	0.14	
1016.00	0.430	243.540	1015.97	5.21	-4.05	-5.19	40°11'38.979"N	104°57'43.699"W	0.01	
1116.00	0.160	254.250	1115.97	5.69	-4.25	-5.66	40°11'38.977"N	104°57'43.705"W	0.27	
1198.00	0.150	273.900	1197.97	5.90	-4.28	-5.88	40°11'38.977"N	104°57'43.708"W	0.07	Tie-Into GYRO Surveys
1308.00	0.210	304.790	1307.97	6.21	-4.15	-6.19	40°11'38.978"N	104°57'43.712"W	0.10	Begin BHI MWD+IFR Surveys
1402.00	1.760	169.800	1401.96	6.11	-5.47	-6.07	40°11'38.965"N	104°57'43.710"W	2.04	
1496.00	3.580	172.680	1495.85	5.50	-9.80	-5.45	40°11'38.922"N	104°57'43.702"W	1.94	
1590.00	5.490	167.040	1589.55	4.16	-17.10	-4.06	40°11'38.850"N	104°57'43.684"W	2.08	
1684.00	7.080	166.090	1682.99	1.81	-27.10	-1.66	40°11'38.751"N	104°57'43.653"W	1.70	
1778.00	8.770	158.420	1776.09	-2.15	-39.39	2.37	40°11'38.630"N	104°57'43.601"W	2.12	
1871.00	9.940	150.870	1867.85	-8.59	-53.00	8.88	40°11'38.495"N	104°57'43.518"W	1.82	
1965.00	11.780	151.150	1960.17	-17.08	-68.49	17.46	40°11'38.342"N	104°57'43.407"W	1.96	
2059.00	13.120	145.880	2051.96	-27.60	-85.73	28.08	40°11'38.172"N	104°57'43.270"W	1.87	
2153.00	13.890	144.860	2143.36	-39.98	-103.79	40.56	40°11'37.993"N	104°57'43.109"W	0.86	
2247.00	15.290	146.160	2234.32	-53.27	-123.31	53.95	40°11'37.800"N	104°57'42.937"W	1.53	
2341.00	16.290	149.230	2324.78	-66.79	-144.93	67.60	40°11'37.587"N	104°57'42.761"W	1.39	
2435.00	17.760	151.580	2414.66	-80.23	-168.87	81.17	40°11'37.350"N	104°57'42.586"W	1.73	
2529.00	19.860	152.710	2503.63	-94.23	-195.67	95.31	40°11'37.085"N	104°57'42.404"W	2.27	
2623.00	21.890	153.310	2591.46	-109.25	-225.52	110.51	40°11'36.790"N	104°57'42.208"W	2.17	
2716.00	22.850	153.630	2677.46	-124.89	-257.19	126.31	40°11'36.477"N	104°57'42.004"W	1.04	
2810.00	22.080	152.940	2764.32	-140.85	-289.27	142.46	40°11'36.160"N	104°57'41.796"W	0.87	
2904.00	22.460	150.280	2851.31	-157.62	-320.60	159.40	40°11'35.851"N	104°57'41.578"W	1.15	
2993.00	22.820	149.800	2933.46	-174.56	-350.28	176.51	40°11'35.558"N	104°57'41.358"W	0.45	
3077.00	22.200	149.110	3011.06	-190.75	-377.98	192.85	40°11'35.284"N	104°57'41.147"W	0.80	
3163.00	21.060	149.330	3091.00	-206.82	-405.21	209.07	40°11'35.015"N	104°57'40.938"W	1.33	
3248.00	21.310	146.910	3170.26	-222.90	-431.29	225.30	40°11'34.757"N	104°57'40.729"W	1.07	
3333.00	20.880	149.390	3249.56	-238.90	-457.27	241.44	40°11'34.500"N	104°57'40.521"W	1.17	
3418.00	21.490	150.410	3328.82	-254.15	-483.84	256.84	40°11'34.238"N	104°57'40.322"W	0.84	
3503.00	22.450	151.770	3407.64	-269.36	-511.68	272.21	40°11'33.963"N	104°57'40.124"W	1.28	
3588.00	23.130	152.360	3486.01	-284.62	-540.77	287.63	40°11'33.675"N	104°57'39.926"W	0.84	
3673.00	22.830	151.080	3564.26	-300.18	-570.00	303.35	40°11'33.386"N	104°57'39.723"W	0.69	
3758.00	22.830	148.940	3642.60	-316.50	-598.55	319.83	40°11'33.104"N	104°57'39.511"W	0.98	
3843.00	23.380	149.630	3720.79	-333.38	-627.23	336.87	40°11'32.821"N	104°57'39.291"W	0.72	
3928.00	24.430	151.070	3798.49	-350.24	-657.17	353.90	40°11'32.525"N	104°57'39.072"W	1.41	
4014.00	24.380	151.650	3876.81	-367.10	-688.35	370.93	40°11'32.217"N	104°57'38.852"W	0.28	

REFERENCE WELLPATH IDENTIFICATION			
Operator	KERR-MCGEE OIL & GAS ONSHORE LP	Slot	SLOT#30 DOUTHIT STATE 38N-27HZ (1598' FSL & 416, SEC.26)
Area	COLORADO	Well	DOUTHIT STATE 38N-27HZ
Field	WELD COUNTY (KERR MCGEE)	Wellbore	DOUTHIT STATE 38N-27HZ AWB
Facility	SEC.26-T3N-R68W		

WELLPATH DATA (159 stations)										
MD [ft]	Inclination [°]	Azimuth [°]	TVD [ft]	Vert Sect [ft]	North [ft]	East [ft]	Latitude	Longitude	DLS [°/100ft]	Comments
4099.00	22.700	150.950	3954.73	-383.23	-718.13	387.22	40°11'31.922"N	104°57'38.642"W	2.00	
4184.00	21.180	145.580	4033.58	-399.73	-745.14	403.87	40°11'31.655"N	104°57'38.428"W	2.96	
4269.00	18.970	145.550	4113.41	-416.09	-769.20	420.37	40°11'31.418"N	104°57'38.215"W	2.60	
4354.00	19.690	149.400	4193.62	-431.06	-792.92	435.47	40°11'31.183"N	104°57'38.021"W	1.72	
4440.00	22.200	151.250	4273.94	-446.11	-819.64	450.66	40°11'30.919"N	104°57'37.825"W	3.02	
4525.00	23.940	153.520	4352.14	-461.36	-849.16	466.08	40°11'30.628"N	104°57'37.626"W	2.30	
4610.00	23.770	153.420	4429.88	-476.54	-879.92	481.43	40°11'30.324"N	104°57'37.428"W	0.21	
4695.00	21.840	151.410	4508.23	-491.61	-909.12	496.67	40°11'30.035"N	104°57'37.232"W	2.45	
4780.00	21.750	151.860	4587.15	-506.45	-936.89	511.66	40°11'29.761"N	104°57'37.039"W	0.22	
4865.00	22.230	151.880	4665.97	-521.30	-964.96	526.67	40°11'29.483"N	104°57'36.846"W	0.56	
4951.00	23.930	151.260	4745.08	-537.19	-994.60	542.72	40°11'29.190"N	104°57'36.639"W	2.00	
5035.00	22.510	150.250	4822.28	-553.20	-1023.50	558.89	40°11'28.905"N	104°57'36.430"W	1.76	
5120.00	21.800	150.610	4901.00	-568.87	-1051.38	574.71	40°11'28.629"N	104°57'36.226"W	0.85	
5205.00	20.770	150.620	4980.20	-583.86	-1078.27	589.85	40°11'28.364"N	104°57'36.031"W	1.21	
5291.00	19.680	152.250	5060.90	-597.94	-1104.37	604.08	40°11'28.106"N	104°57'35.848"W	1.43	
5376.00	20.640	152.100	5140.69	-611.47	-1130.28	617.75	40°11'27.850"N	104°57'35.672"W	1.13	
5461.00	20.010	151.550	5220.40	-625.26	-1156.30	631.69	40°11'27.592"N	104°57'35.492"W	0.77	
5546.00	17.090	150.260	5300.97	-638.26	-1179.94	644.82	40°11'27.359"N	104°57'35.323"W	3.47	
5630.00	16.160	150.500	5381.46	-650.02	-1200.83	656.69	40°11'27.152"N	104°57'35.170"W	1.11	
5716.00	14.860	150.030	5464.33	-661.31	-1220.80	668.10	40°11'26.955"N	104°57'35.023"W	1.52	
5801.00	14.090	146.970	5546.63	-672.30	-1238.92	679.18	40°11'26.776"N	104°57'34.880"W	1.28	
5886.00	11.310	142.950	5629.54	-682.87	-1254.25	689.85	40°11'26.624"N	104°57'34.743"W	3.43	
5971.00	10.010	150.310	5713.08	-691.48	-1267.32	698.53	40°11'26.495"N	104°57'34.631"W	2.21	
6056.00	9.860	155.970	5796.81	-698.03	-1280.38	705.15	40°11'26.366"N	104°57'34.546"W	1.16	
6142.00	8.010	154.390	5881.76	-703.55	-1292.51	710.74	40°11'26.246"N	104°57'34.474"W	2.17	
6227.00	5.950	153.860	5966.12	-708.00	-1301.81	715.24	40°11'26.154"N	104°57'34.416"W	2.42	
6312.00	4.380	149.190	6050.78	-711.57	-1308.55	718.84	40°11'26.088"N	104°57'34.369"W	1.91	
6397.00	2.990	141.980	6135.60	-714.57	-1313.09	721.87	40°11'26.043"N	104°57'34.330"W	1.72	
6482.00	2.090	133.780	6220.52	-717.04	-1315.91	724.36	40°11'26.015"N	104°57'34.298"W	1.14	
6567.00	0.300	32.160	6305.50	-718.28	-1316.79	725.59	40°11'26.006"N	104°57'34.282"W	2.55	
6652.00	0.890	342.660	6390.49	-718.20	-1315.97	725.52	40°11'26.014"N	104°57'34.283"W	0.86	
6737.00	1.290	315.120	6475.48	-717.34	-1314.66	724.64	40°11'26.027"N	104°57'34.295"W	0.76	
6780.00	5.080	281.860	6518.41	-715.14	-1313.93	722.44	40°11'26.035"N	104°57'34.323"W	9.45	
6824.00	8.510	279.990	6562.09	-710.03	-1312.96	717.32	40°11'26.044"N	104°57'34.389"W	7.81	
6867.00	12.270	283.570	6604.38	-702.46	-1311.34	709.75	40°11'26.060"N	104°57'34.487"W	8.87	
6909.00	15.760	282.190	6645.12	-692.55	-1309.09	699.83	40°11'26.083"N	104°57'34.614"W	8.35	
6952.00	19.460	279.790	6686.10	-679.80	-1306.64	687.06	40°11'26.107"N	104°57'34.779"W	8.77	
6994.00	23.050	276.800	6725.24	-664.75	-1304.47	672.00	40°11'26.128"N	104°57'34.973"W	8.93	
7037.00	27.050	275.400	6764.19	-646.66	-1302.55	653.90	40°11'26.147"N	104°57'35.206"W	9.40	
7079.00	30.760	273.080	6800.95	-626.42	-1301.08	633.65	40°11'26.162"N	104°57'35.467"W	9.23	
7122.00	35.400	272.130	6836.97	-602.99	-1300.02	610.22	40°11'26.172"N	104°57'35.769"W	10.86	
7164.00	39.910	270.980	6870.21	-577.35	-1299.34	584.57	40°11'26.179"N	104°57'36.099"W	10.87	
7207.00	44.760	270.290	6901.99	-548.41	-1299.03	555.63	40°11'26.182"N	104°57'36.472"W	11.33	
7249.00	49.300	269.250	6930.61	-517.68	-1299.16	524.90	40°11'26.181"N	104°57'36.868"W	10.96	
7292.00	54.350	268.640	6957.18	-483.90	-1299.79	491.12	40°11'26.174"N	104°57'37.304"W	11.80	

REFERENCE WELLPATH IDENTIFICATION			
Operator	KERR-MCGEE OIL & GAS ONSHORE LP	Slot	SLOT#30 DOUTHIT STATE 38N-27HZ (1598' FSL & 416, SEC.26)
Area	COLORADO	Well	DOUTHIT STATE 38N-27HZ
Field	WELD COUNTY (KERR MCGEE)	Wellbore	DOUTHIT STATE 38N-27HZ AWB
Facility	SEC.26-T3N-R68W		

WELLPATH DATA (159 stations) † = interpolated/extrapolated station										
MD [ft]	Inclination [°]	Azimuth [°]	TVD [ft]	Vert Sect [ft]	North [ft]	East [ft]	Latitude	Longitude	DLS [°/100ft]	Comments
7334.00	58.170	267.830	6980.50	-448.99	-1300.87	456.21	40°11'26.164"N	104°57'37.753"W	9.24	
7377.00	62.800	267.890	7001.68	-411.60	-1302.27	418.83	40°11'26.150"N	104°57'38.235"W	10.77	
7419.00	67.060	267.600	7019.47	-373.58	-1303.77	380.83	40°11'26.135"N	104°57'38.725"W	10.16	
7462.00	71.360	268.040	7034.73	-333.42	-1305.29	340.66	40°11'26.120"N	104°57'39.242"W	10.05	
7505.00	74.710	268.340	7047.28	-292.31	-1306.59	299.56	40°11'26.107"N	104°57'39.772"W	7.82	
7548.00	77.500	268.980	7057.60	-250.58	-1307.56	257.84	40°11'26.098"N	104°57'40.310"W	6.65	
7590.00	78.780	269.000	7066.23	-209.48	-1308.29	216.74	40°11'26.090"N	104°57'40.839"W	3.05	
7630.00	83.510	268.160	7072.39	-169.97	-1309.27	177.24	40°11'26.081"N	104°57'41.348"W	12.01	
7685.00†	86.201	267.737	7077.32	-115.22	-1311.23	122.50	40°11'26.061"N	104°57'42.053"W	4.95	7" Casing Point
7779.00	90.800	267.020	7079.78	-21.36	-1315.53	28.66	40°11'26.019"N	104°57'43.263"W	4.95	
7864.00	90.120	266.240	7079.10	63.52	-1320.52	-56.19	40°11'25.970"N	104°57'44.356"W	1.22	
7949.00	90.580	266.930	7078.58	148.39	-1325.59	-141.04	40°11'25.920"N	104°57'45.449"W	0.98	
8036.00	91.160	268.010	7077.26	235.32	-1329.43	-227.94	40°11'25.882"N	104°57'46.569"W	1.41	
8121.00	91.010	269.140	7075.65	320.28	-1331.54	-312.90	40°11'25.861"N	104°57'47.664"W	1.34	
8206.00	91.380	269.720	7073.87	405.26	-1332.39	-397.87	40°11'25.852"N	104°57'48.759"W	0.81	
8291.00	91.440	269.530	7071.78	490.24	-1332.94	-482.85	40°11'25.847"N	104°57'49.854"W	0.23	
8376.00	90.610	269.420	7070.26	575.22	-1333.72	-567.83	40°11'25.839"N	104°57'50.949"W	0.99	
8546.00	88.450	269.820	7071.66	745.21	-1334.85	-737.81	40°11'25.828"N	104°57'53.139"W	1.29	
8632.00	89.130	269.930	7073.47	831.19	-1335.04	-823.79	40°11'25.826"N	104°57'54.247"W	0.80	
8716.00	91.200	270.240	7073.23	915.18	-1334.91	-907.78	40°11'25.827"N	104°57'55.329"W	2.49	
8802.00	91.440	270.190	7071.25	1001.15	-1334.59	-993.76	40°11'25.830"N	104°57'56.437"W	0.29	
8887.00	91.940	270.330	7068.74	1086.11	-1334.20	-1078.72	40°11'25.834"N	104°57'57.532"W	0.61	
8972.00	90.860	269.590	7066.67	1171.08	-1334.26	-1163.69	40°11'25.834"N	104°57'58.627"W	1.54	
9057.00	91.100	269.650	7065.21	1256.07	-1334.83	-1248.68	40°11'25.828"N	104°57'59.722"W	0.29	
9142.00	91.200	269.460	7063.51	1341.05	-1335.49	-1333.66	40°11'25.821"N	104°58'00.817"W	0.25	
9312.00	91.170	269.880	7059.99	1511.02	-1336.47	-1503.62	40°11'25.812"N	104°58'03.007"W	0.25	
9397.00	90.610	269.850	7058.67	1596.00	-1336.67	-1588.61	40°11'25.810"N	104°58'04.102"W	0.66	
9483.00	88.760	269.130	7059.14	1682.00	-1337.43	-1674.60	40°11'25.802"N	104°58'05.210"W	2.31	
9568.00	89.930	270.420	7060.12	1766.99	-1337.77	-1759.59	40°11'25.799"N	104°58'06.305"W	2.05	
9653.00	89.410	270.680	7060.60	1851.98	-1336.95	-1844.59	40°11'25.807"N	104°58'07.400"W	0.68	
9738.00	89.530	270.590	7061.39	1936.96	-1336.01	-1929.58	40°11'25.816"N	104°58'08.496"W	0.18	
9823.00	90.920	271.290	7061.06	2021.94	-1334.61	-2014.56	40°11'25.830"N	104°58'09.591"W	1.83	
9908.00	89.400	269.910	7060.82	2106.92	-1333.72	-2099.55	40°11'25.838"N	104°58'10.686"W	2.42	
9993.00	89.320	269.970	7061.77	2191.92	-1333.81	-2184.55	40°11'25.837"N	104°58'11.781"W	0.12	
10078.00	89.130	270.110	7062.92	2276.91	-1333.75	-2269.54	40°11'25.838"N	104°58'12.876"W	0.28	
10163.00	88.580	270.290	7064.62	2361.89	-1333.46	-2354.52	40°11'25.841"N	104°58'13.971"W	0.68	
10249.00	89.350	269.770	7066.17	2447.87	-1333.41	-2440.51	40°11'25.841"N	104°58'15.079"W	1.08	
10333.00	88.890	269.640	7067.46	2531.86	-1333.84	-2524.50	40°11'25.837"N	104°58'16.161"W	0.57	
10418.00	90.150	269.190	7068.17	2616.85	-1334.71	-2609.49	40°11'25.828"N	104°58'17.257"W	1.57	
10503.00	91.290	269.150	7067.11	2701.84	-1335.94	-2694.47	40°11'25.816"N	104°58'18.352"W	1.34	
10589.00	89.160	268.710	7066.77	2787.83	-1337.55	-2780.45	40°11'25.800"N	104°58'19.460"W	2.53	
10674.00	88.610	268.650	7068.42	2872.80	-1339.51	-2865.41	40°11'25.780"N	104°58'20.554"W	0.65	
10759.00	90.210	269.320	7069.30	2957.79	-1341.01	-2950.39	40°11'25.765"N	104°58'21.649"W	2.04	
10844.00	90.120	269.310	7069.05	3042.78	-1342.03	-3035.38	40°11'25.755"N	104°58'22.744"W	0.11	
10928.00	90.640	269.280	7068.49	3126.78	-1343.06	-3119.37	40°11'25.745"N	104°58'23.827"W	0.62	

REFERENCE WELLPATH IDENTIFICATION			
Operator	KERR-MCGEE OIL & GAS ONSHORE LP	Slot	SLOT#30 DOUTHIT STATE 38N-27HZ (1598' FSL & 416, SEC.26)
Area	COLORADO	Well	DOUTHIT STATE 38N-27HZ
Field	WELD COUNTY (KERR MCGEE)	Wellbore	DOUTHIT STATE 38N-27HZ AWB
Facility	SEC.26-T3N-R68W		

WELLPATH DATA (159 stations)										
MD [ft]	Inclination [°]	Azimuth [°]	TVD [ft]	Vert Sect [ft]	North [ft]	East [ft]	Latitude	Longitude	DLS [°/100ft]	Comments
11014.00	90.890	269.040	7067.35	3212.77	-1344.32	-3205.36	40°11'25.732"N	104°58'24.935"W	0.40	
11099.00	91.170	269.030	7065.82	3297.75	-1345.75	-3290.33	40°11'25.718"N	104°58'26.030"W	0.33	
11184.00	90.890	268.880	7064.29	3382.73	-1347.30	-3375.30	40°11'25.703"N	104°58'27.124"W	0.37	
11269.00	89.530	268.540	7063.98	3467.71	-1349.22	-3460.28	40°11'25.684"N	104°58'28.219"W	1.65	
11354.00	89.870	268.540	7064.42	3552.70	-1351.38	-3545.25	40°11'25.662"N	104°58'29.314"W	0.40	
11440.00	89.630	268.400	7064.80	3638.68	-1353.68	-3631.22	40°11'25.639"N	104°58'30.422"W	0.32	
11525.00	90.830	268.540	7064.46	3723.65	-1355.95	-3716.19	40°11'25.617"N	104°58'31.517"W	1.42	
11610.00	90.360	268.340	7063.58	3808.63	-1358.26	-3801.15	40°11'25.594"N	104°58'32.612"W	0.60	
11695.00	90.430	268.220	7062.99	3893.60	-1360.81	-3886.11	40°11'25.568"N	104°58'33.706"W	0.16	
11780.00	91.200	268.270	7061.78	3978.57	-1363.42	-3971.06	40°11'25.543"N	104°58'34.801"W	0.91	
11865.00	89.010	268.750	7061.62	4063.54	-1365.63	-4056.03	40°11'25.521"N	104°58'35.896"W	2.64	
11950.00	88.700	269.230	7063.32	4148.52	-1367.12	-4140.99	40°11'25.506"N	104°58'36.991"W	0.67	
12035.00	88.670	270.160	7065.27	4233.50	-1367.58	-4225.97	40°11'25.501"N	104°58'38.086"W	1.09	
12122.00	88.490	270.480	7067.43	4320.46	-1367.09	-4312.94	40°11'25.506"N	104°58'39.206"W	0.42	
12207.00	90.330	271.150	7068.31	4405.44	-1365.88	-4397.92	40°11'25.518"N	104°58'40.301"W	2.30	
12292.00	89.750	271.160	7068.25	4490.41	-1364.17	-4482.91	40°11'25.534"N	104°58'41.397"W	0.68	
12377.00	90.730	271.300	7067.89	4575.38	-1362.34	-4567.89	40°11'25.552"N	104°58'42.491"W	1.16	
12462.00	90.060	271.390	7067.30	4660.34	-1360.35	-4652.86	40°11'25.572"N	104°58'43.586"W	0.80	
12547.00	90.860	271.280	7066.62	4745.30	-1358.37	-4737.83	40°11'25.591"N	104°58'44.681"W	0.95	
12632.00	90.520	271.190	7065.60	4830.26	-1356.54	-4822.81	40°11'25.609"N	104°58'45.776"W	0.41	
12717.00	89.810	271.300	7065.35	4915.23	-1354.69	-4907.79	40°11'25.627"N	104°58'46.871"W	0.85	
12802.00	89.260	271.230	7066.04	5000.19	-1352.81	-4992.76	40°11'25.646"N	104°58'47.966"W	0.65	
12914.00	88.700	271.470	7068.04	5112.13	-1350.17	-5104.71	40°11'25.671"N	104°58'49.409"W	0.54	Last BHI MWD+IFR Surveys
12986.00	88.700	271.470	7069.67	5184.07	-1348.33	-5176.67	40°11'25.689"N	104°58'50.336"W	0.00	Projection to Bit

HOLE & CASING SECTIONS - Ref Wellbore: DOUTHIT STATE 38N-27HZ AWB Ref Wellpath: DOUTHIT STATE 38N-27HZ AWP										
String/Diameter	Start MD [ft]	End MD [ft]	Interval [ft]	Start TVD [ft]	End TVD [ft]	Start N/S [ft]	Start E/W [ft]	End N/S [ft]	End E/W [ft]	
13.5in Open Hole	16.00	1264.00	1248.00	16.00	1263.97	0.00	0.00	-4.23	-6.06	
9.625in Casing Surface	16.00	1254.00	1238.00	16.00	1253.97	0.00	0.00	-4.24	-6.03	
8.75in Open Hole	16.00	7695.00	7679.00	16.00	7077.94	0.00	0.00	-1311.63	112.53	
7in Casing Intermediate	16.00	7685.00	7669.00	16.00	7077.32	0.00	0.00	-1311.23	122.50	
6.125in Open Hole	7695.00	12986.00	5291.00	7077.94	7069.67	-1311.63	112.53	-1348.33	-5176.67	

REFERENCE WELLPATH IDENTIFICATION			
Operator	KERR-MCGEE OIL & GAS ONSHORE LP	Slot	SLOT#30 DOUTHIT STATE 38N-27HZ (1598' FSL & 416, SEC.26)
Area	COLORADO	Well	DOUTHIT STATE 38N-27HZ
Field	WELD COUNTY (KERR MCGEE)	Wellbore	DOUTHIT STATE 38N-27HZ AWB
Facility	SEC.26-T3N-R68W		

TARGETS									
Name	MD [ft]	TVD [ft]	North [ft]	East [ft]	Grid East [US ft]	Grid North [US ft]	Latitude	Longitude	Shape
SEC.26-T3N-R68W HARDLINES (460' SETBACKS)		-18.00	2212.41	141.92	3150387.54	1316248.25	40°12'00.882"N	104°57'41.803"W	polygon
SEC.26-T3N-R68W SECTION LINES		-18.00	2212.41	141.92	3150387.54	1316248.25	40°12'00.882"N	104°57'41.803"W	polygon
SEC.27-T3N-R68W HARDLINES (460' SETBACKS)		-18.00	2212.41	141.92	3150387.54	1316248.25	40°12'00.882"N	104°57'41.803"W	polygon
SEC.27-T3N-R68W SECTION LINES		-18.00	2212.41	141.92	3150387.54	1316248.25	40°12'00.882"N	104°57'41.803"W	polygon
DOUTHIT STATE 38N-27HZ BHL (270' FSL & 300' FEL, SEC.26) REV-2		7067.00	-1359.43	-5201.84	3145065.78	1312644.22	40°11'25.580"N	104°58'50.660"W	point
DOUTHIT STATE 38N-27HZ BHL ON PLAT (285' FSL & 300' FEL, SEC.26) REV-1		7067.00	-1344.43	-5201.84	3145065.69	1312659.22	40°11'25.728"N	104°58'50.660"W	point
DOUTHIT STATE 38N-27HZ LAND BOX		7068.00	0.00	0.00	3150259.05	1314035.12	40°11'39.019"N	104°57'43.632"W	polygon
DOUTHIT STATE 38N-27HZ LAND BOX REV-2		7068.00	0.00	0.00	3150259.05	1314035.12	40°11'39.019"N	104°57'43.632"W	polygon

WELLPATH COMPOSITION - Ref Wellbore: DOUTHIT STATE 38N-27HZ AWB Ref Wellpath: DOUTHIT STATE 38N-27HZ AWP				
Start MD [ft]	End MD [ft]	Positional Uncertainty Model	Log Name/Comment	Wellbore
16.00	1198.00	Generic gyro - continuous (Standard)	MS ENERGY GYRO SURVEYS <116-1198>	DOUTHIT STATE 38N-27HZ AWB
1198.00	7630.00	NaviTrak (IFR)	BHI MWD+IFR SURVEYS 8 3/4" HOLE <1308-7630>	DOUTHIT STATE 38N-27HZ AWB
7630.00	12914.00	NaviTrak (IFR)	BHI MWD+IFR SURVEYS <7779-12914>	DOUTHIT STATE 38N-27HZ AWB
12914.00	12986.00	Blind Drilling (std)	Projection to bit	DOUTHIT STATE 38N-27HZ AWB

REFERENCE WELLPATH IDENTIFICATION			
Operator	KERR-MCGEE OIL & GAS ONSHORE LP	Slot	SLOT#30 DOUTHIT STATE 38N-27HZ (1598' FSL & 416, SEC.26)
Area	COLORADO	Well	DOUTHIT STATE 38N-27HZ
Field	WELD COUNTY (KERR MCGEE)	Wellbore	DOUTHIT STATE 38N-27HZ AWB
Facility	SEC.26-T3N-R68W		

WELLPATH COMMENTS				
MD [ft]	Inclination [°]	Azimuth [°]	TVD [ft]	Comment
16.00	0.000	257.710	16.00	Tie-On
116.00	0.260	257.710	116.00	Begin GYRO Surveys
1198.00	0.150	273.900	1197.97	Tie-Into GYRO Surveys
1308.00	0.210	304.790	1307.97	Begin BHI MWD+IFR Surveys
7685.00	86.201	267.737	7077.32	7" Casing Point
12914.00	88.700	271.470	7068.04	Last BHI MWD+IFR Surveys
12986.00	88.700	271.470	7069.67	Projection to Bit