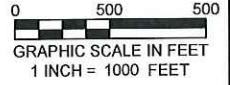
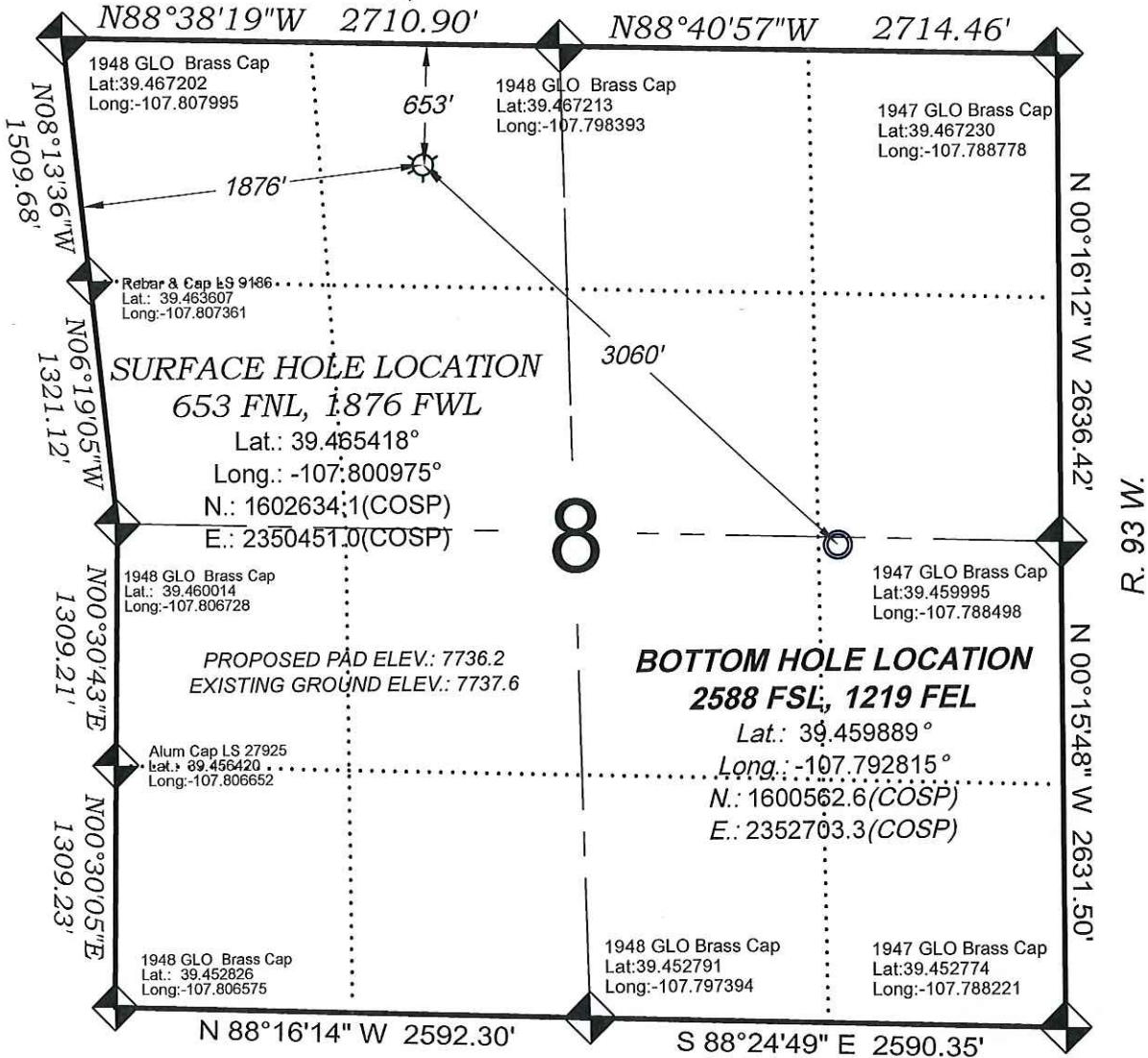


# Federal- RU 332-8

T. 7 S.

(BASIS OF BEARING)



**BOTTOM HOLE LOCATION**  
 2588 FSL, 1219 FEL  
 Lat.: 39.459889°  
 Long.: -107.792815°  
 N.: 1600562.6(COSP)  
 E.: 2352703.3(COSP)

**SURFACE HOLE LOCATION**  
 653 FNL, 1876 FWL  
 Lat.: 39.465418°  
 Long.: -107.800975°  
 N.: 1602634.1(COSP)  
 E.: 2350451.0(COSP)

PROPOSED PAD ELEV.: 7736.2  
 EXISTING GROUND ELEV.: 7737.6

**- LEGEND -**

- FIELD LOCATED SECTION MONUMENTS AS DESCRIBED
- FIELD SURVEYED WELL LOCATION
- CALCULATED BOTTOM HOLE LOCATION
- CALCULATED SECTION CORNER LOCATION

THERE ARE NO VISIBLE IMPROVEMENTS WITHIN 500' OF THIS LOCATION

**SURVEYORS STATEMENT**

I, MICHAEL J. LANGHORNE, A REGISTERED LAND SURVEYOR IN THE STATE OF COLORADO DO HEREBY CERTIFY THAT THE SURVEY SHOWN HEREON WAS PREPARED UNDER MY DIRECT SUPERVISION AND HAS BEEN STAKED ON THE GROUND AS SHOWN ON THE PLAT AND CHECKING THAT THIS MAP IS A TRUE REPRESENTATION THEREOF.

*Michael J. Langhorne*  
 MICHAEL J. LANGHORNE, COLORADO REGISTRATION NO. 36572

FOR AND ON BEHALF OF  
 BOOKCLIFF SURVEY SERVICES, INC.

**REFERENCES**

- 1) RESURVEY T. 7 S., R. 93 W., 6th P.M (GLO PLAT)
- 2) U.S.G.S. QUAD: NORTH MAMM PEAK, CO

**NOTES**

- 1) ELEVATIONS BASED ON N.A. V.D. 1988 PUBLISHED COORDINATES.
- 2) LATITUDES AND LONGITUDES ARE BASE ON NAD 83, PUBLISHED COORDINATES
- 3) STATE PLANE COORDINATES ARE BASED ON COLORADO CENTRAL ZONE, U.S. SURVEY FEET.
- 4) ELEVATION MASK SET TO 15°
- 5) GPS OPERATOR J. KIRKPATRICK, OBSERVED A PDOP 1.8 ON SURVEY POINT NUMBER 391.
- 6) SURFACE AND BOTTOM HOLE LOCATIONS ARE MEASURED 90° FROM SECTION LINES.

**WELL LOCATION PLAT Prepared for:**  
**WPXENERGY** WPX Energy Rocky Mountain, LLC

NE1/4 NW1/4, SECTION 8  
 T. 7 S., R. 93 W. of the 6th P.M.  
 GARFIELD COUNTY, COLORADO

SURVEY DATE:	10/14/14
MAP DATE:	10/14/14
SCALE:	1" = 1000'
PLAT:	1 of 1
PROJECT:	Valley

136 East Third Street  
 Rifle, Colorado  
 81650 Ph. (970)  
 625-2720 Fax (970)  
 625-2773

**BOOKCLIFF**  
 Survey Services, Inc.