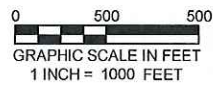
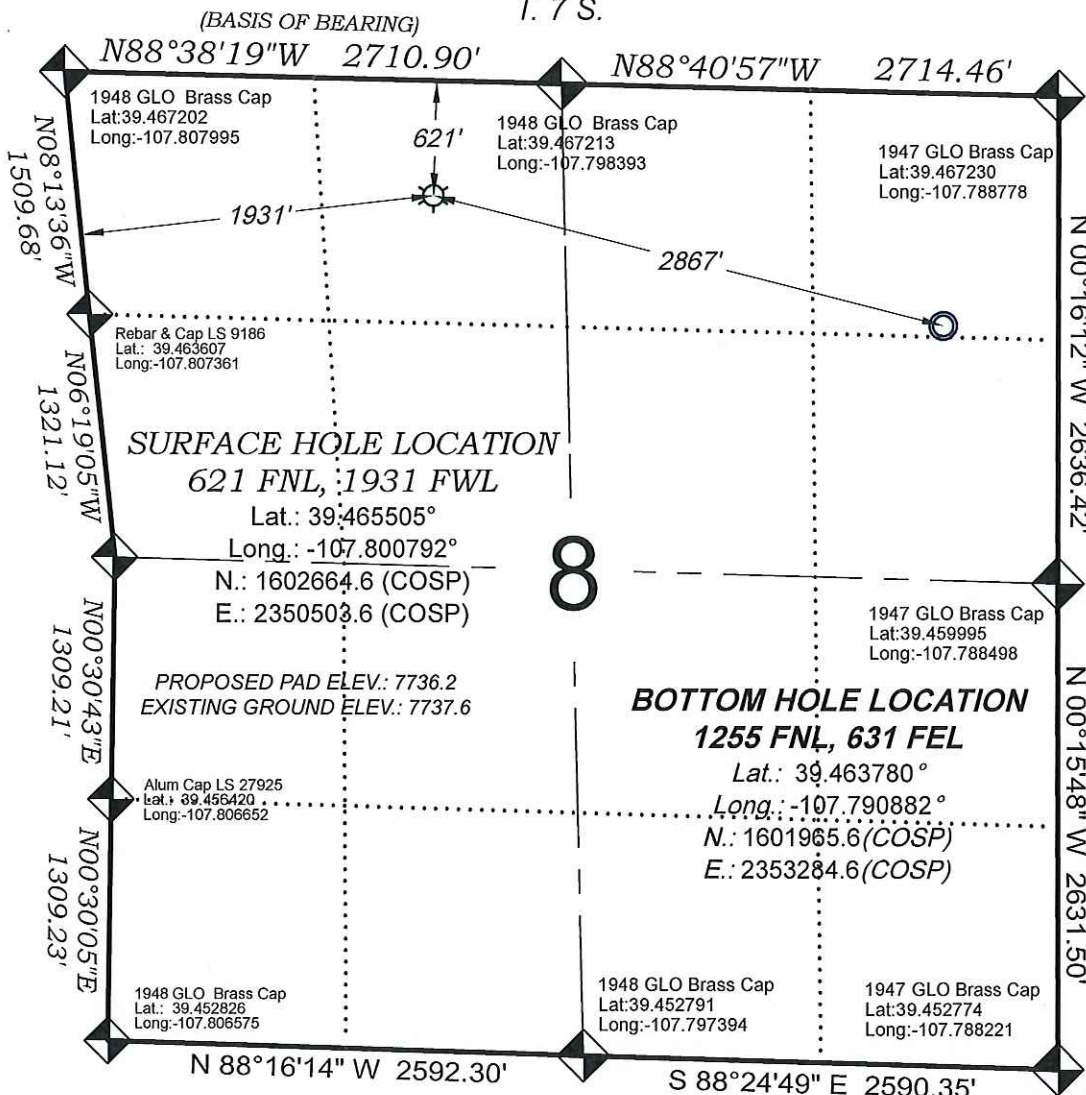


# Federal- RU 42-8

T. 7 S.



R. 93 W.

## SURFACE HOLE LOCATION

621 FNL, 1931 FWL

Lat.: 39.465505°

Long.: -107.800792°

N.: 1602664.6 (COSP)

E.: 2350503.6 (COSP)

PROPOSED PAD ELEV.: 7736.2  
EXISTING GROUND ELEV.: 7737.6

## BOTTOM HOLE LOCATION

1255 FNL, 631 FEL

Lat.: 39.463780°

Long.: -107.790882°

N.: 1601965.6 (COSP)

E.: 2353284.6 (COSP)

THERE ARE NO VISIBLE IMPROVEMENTS WITHIN 500' OF THIS LOCATION

### SURVEYORS STATEMENT

I, MICHAEL J. LANGHORNE, A REGISTERED LAND SURVEYOR IN THE STATE OF COLORADO DO HEREBY CERTIFY THAT THE SURVEY SHOWN HEREON WAS PREPARED UNDER MY DIRECT SUPERVISION AND HAS BEEN STAKED ON THE GROUND AS SHOWN ON THE PLAT AND CHECKING THAT THIS MAP IS A TRUE REPRESENTATION THEREOF.

*Michael J. Langhorne*

MICHAEL J. LANGHORNE, COLORADO REGISTRATION NO. 36572  
FOR AND ON BEHALF OF  
BOOKCLIFF SURVEY SERVICES, INC.

### REFERENCES

- 1) RESURVEY T. 7 S., R. 93 W., 6th P.M (GLO PLAT)
- 2) U.S.G.S. QUAD: NORTH MAMM PEAK, CO

REVISED: 12/1/14

136 East Third Street  
Rifle, Colorado  
81650 Ph. (970)  
625-2720 Fax (970)  
625-2773



**BOOKCLIFF**  
Survey Services, Inc.

SURVEY DATE: 10/14/14  
MAP DATE: 10/14/14  
SCALE: 1" = 1000'  
PLAT: 1 of 1  
PROJECT: Valley

### - LEGEND -

FIELD LOCATED SECTION MONUMENTS AS DESCRIBED



FIELD SURVEYED WELL LOCATION



CALCULATED BOTTOM HOLE LOCATION



CALCULATED SECTION CORNER LOCATION



### NOTES

- 1) ELEVATIONS BASED ON N.A.V.D. 1988 PUBLISHED COORDINATES.
- 2) LATITUDES AND LONGITUDES ARE BASE ON NAD 83, PUBLISHED COORDINATES
- 3) STATE PLANE COORDINATES ARE BASED ON COLORADO CENTRAL ZONE, U.S. SURVEY FEET.
- 4) ELEVATION MASK SET TO 15°
- 5) GPS OPERATOR J. KIRKPATRICK, OBSERVED A PDOP 1.8 ON SURVEY POINT NUMBER 391.
- 6) SURFACE AND BOTTOM HOLE LOCATIONS ARE MEASURED 90° FROM SECTION LINES.

**WELL LOCATION PLAT Prepared for:**  
**WPXENERGY.**

WPX Energy Rocky Mountain, LLC

NE1/4 NW1/4, SECTION 8  
T. 7 S., R. 93 W. of the 6th P.M.  
GARFIELD COUNTY, COLORADO