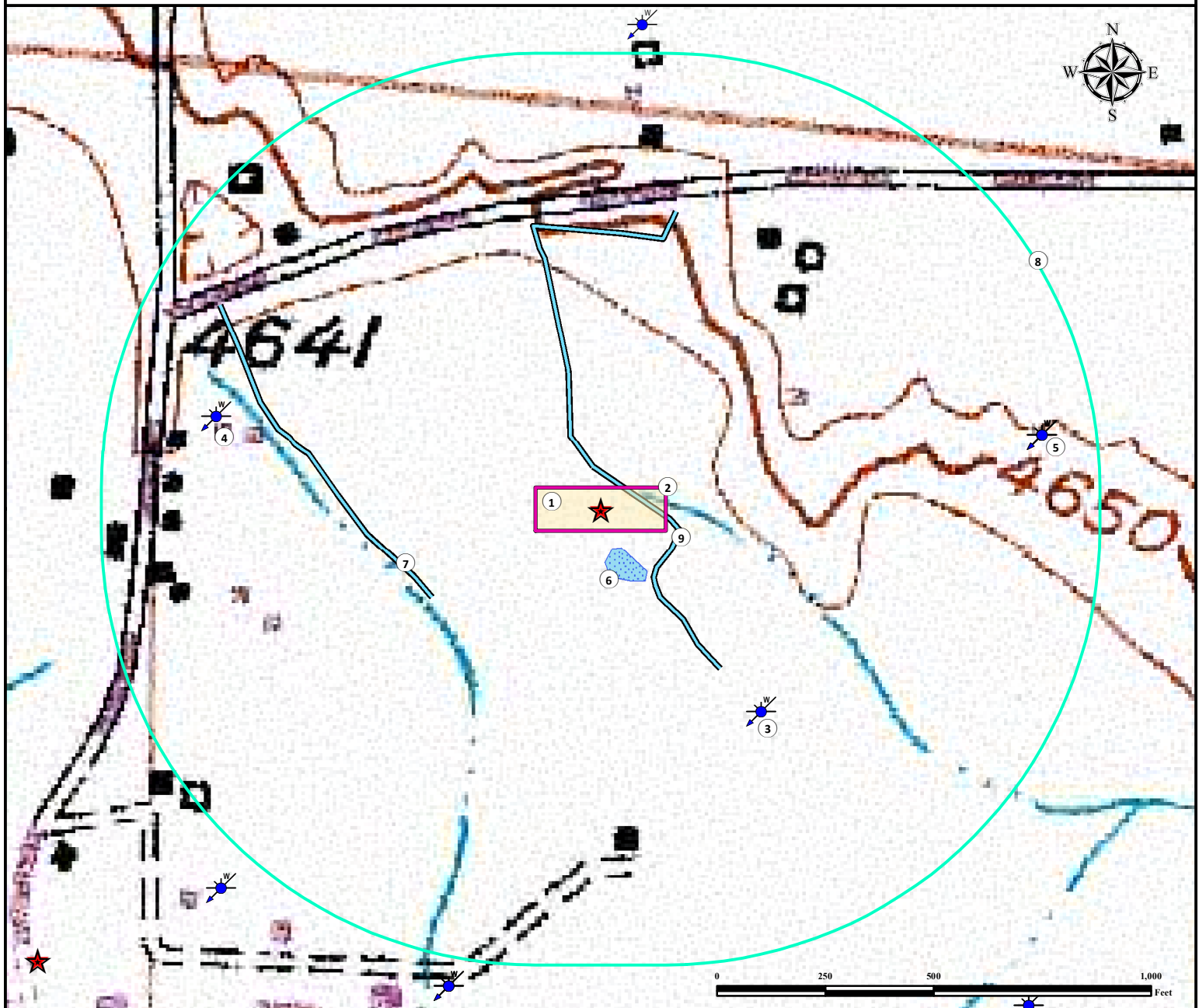


# Hydrology Map

## SHERLEY 4-9H FACILITY

NW¼ NW¼ SECTION 4, TOWNSHIP 5 NORTH, RANGE 65 WEST OF THE 6TH PRINCIPAL MERIDIAN



### Measured from Edge of Disturbance Area

1. Proposed Sherley 4-9H FACILITY.
2. Operational Disturbance Area.
3. Water Well (Permit #74793) is  $\pm 470'$  SE.
4. Water Well (Permit #205113) is  $\pm 753'$  NW.
5. Water Wells (Permits #11161) are  $\pm 875'$  NE.
6. Seasonal Pond is  $\pm 38'$  S.
7. Ditch is  $\pm 283'$  W.


8. 1000' Radius.
9. Ditch (to be rerouted) is  $\pm 0'$  E.


### Legend



Water Well

 Proposed Facility

 Disturbance Area

 1000' Radius

 Seasonal Pond

 Ditch



818' FNL 1023' FWL  
LAT: 40.433393°  
LONG: -104.674080° (NAD 83)  
PDOP: 1.90  
Operator: Bart Pfeifer



Use our resources to find yours!  
[www.petro-fs.com](http://www.petro-fs.com)  
(303) 928-7128

Field Date: 10/03/2014  
Drafting Date: 12/04/2014  
Drafter: DRF  
Checked By: SRD  
Revision:

Data Sources:  
- Topo courtesy USGS  
- Water features courtesy of NHD

Prepared for:

