



NABORS

**COMPLETION
& PRODUCTION
SERVICES CO.**

**SONIC
LOG**

Company		MULL DRILLING COMPANY, INC.	
Well	NWAU #38		
Field	ARAPAHOE		
County	CHEYENNE	State	COLORADO
Location:	API # : 05-017-07799-00 2070' FSL & 659' FWL NW/4 - SW/4 SEC 25 TWP 13S RGE 43W		Other Services CDL/CNL/PE DIL/MEL
Permanent Datum	GROUND LEVEL	Elevation	3988
Log Measured From	KELLY BUSHING 11' A.G.L.		
Drilling Measured From	KELLY BUSHING		
Date	11/3/14		
Run Number	TWO		
Depth Driller	5400		
Depth Logger	5402		
Bottom Logged Interval	4394		
Top Log Interval	500		
Casing Driller	8 5/8"@518'		
Casing Logger	518		
Bit Size	7 7/8"		
Type Fluid in Hole	CHEMICAL MUD	CHLORIDES 600 PPM	
Density / Viscosity	9.3/62		
pH / Fluid Loss	9.07 / 2		
Source of Sample	FLOWLINE		
Rim @ Meas. Temp	2.00@60F		
Rmf @ Meas. Temp	1.50@60F		
Rmc @ Meas. Temp	2.40@60F		
Source of Rmf / Rmc	MEASUREMENT		
Rim @ BHT	.930@129F		
Time Circulation Stopped	5.5 HOURS		
Time Logger on Bottom	6:00 P.M.		
Maximum Recorded Temperature	129F		
Equipment Number	4854		
Location	HAYS, KANSAS		
Recorded By	JEFF LUEBBERS		
Witnessed By	GREG CONDREN		

<<< Fold Here >>>

All interpretations are opinions based on inferences from electrical or other measurements and we cannot and do not guarantee the accuracy or correctness of any interpretation, and we shall not, except in the case of gross or willful negligence on our part, be liable or responsible for any loss, costs, damages, or expenses incurred or sustained by anyone resulting from any interpretation made by any of our officers, agents or employees. These interpretations are also subject to our general terms and conditions set out in our current Price Schedule.

Comments

THANK YOU FOR USING "NABORS" HAYS, KANSAS (785) 628-6395
DIRECTIONS

ARAPAHOE, CO. & OLD 40 HWY, N. ON MICHIGAN AVE. TO DEAD END, 1/2W. TO "RD. 53", 2 1/4N., E. IN



NABORS

**COMPLETION
& PRODUCTION**

MAIN SECTION

Database File:

25907pe.db

Dataset Pathname:

pass7.4

Presentation Format:

slt

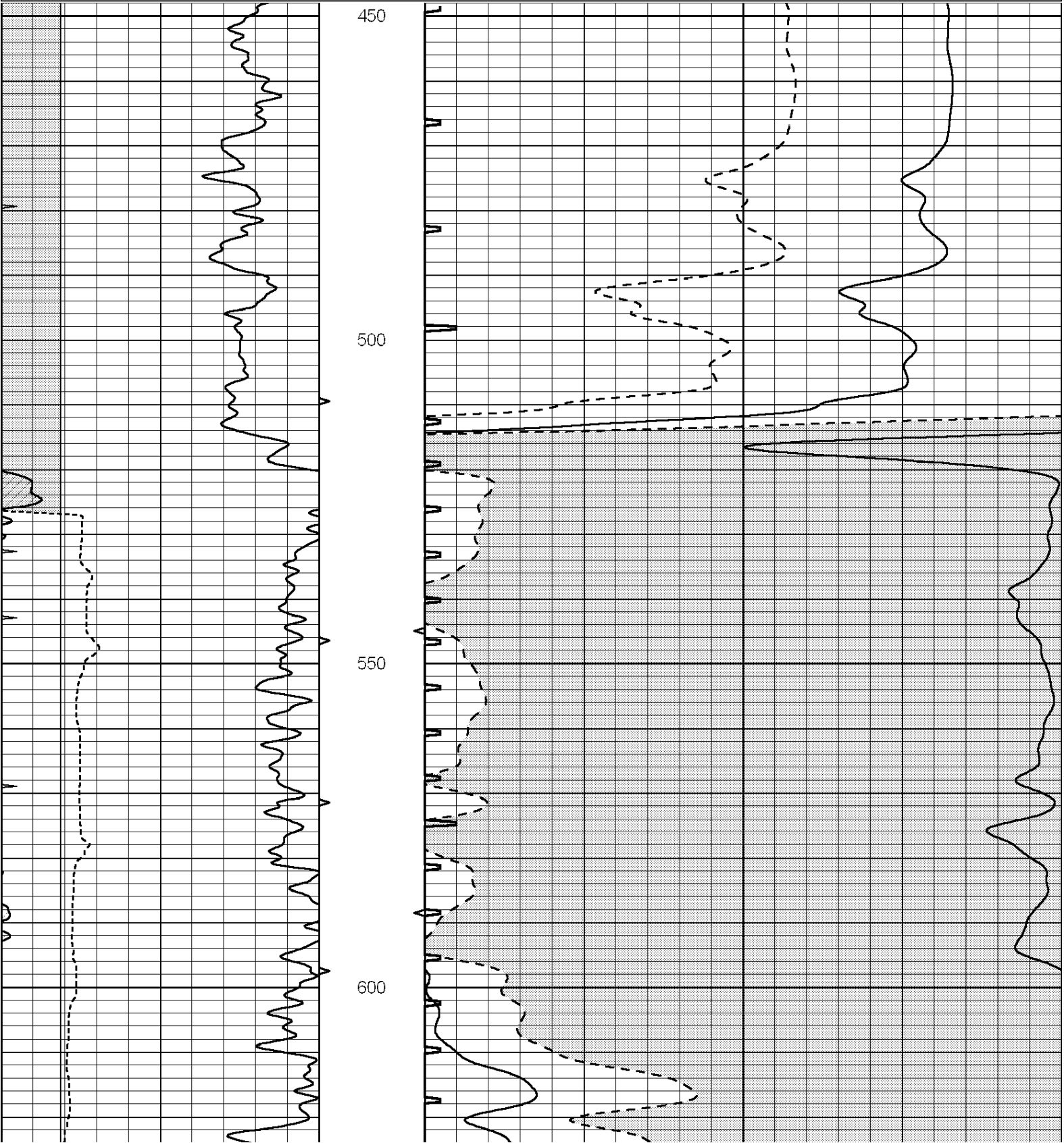
Dataset Creation:

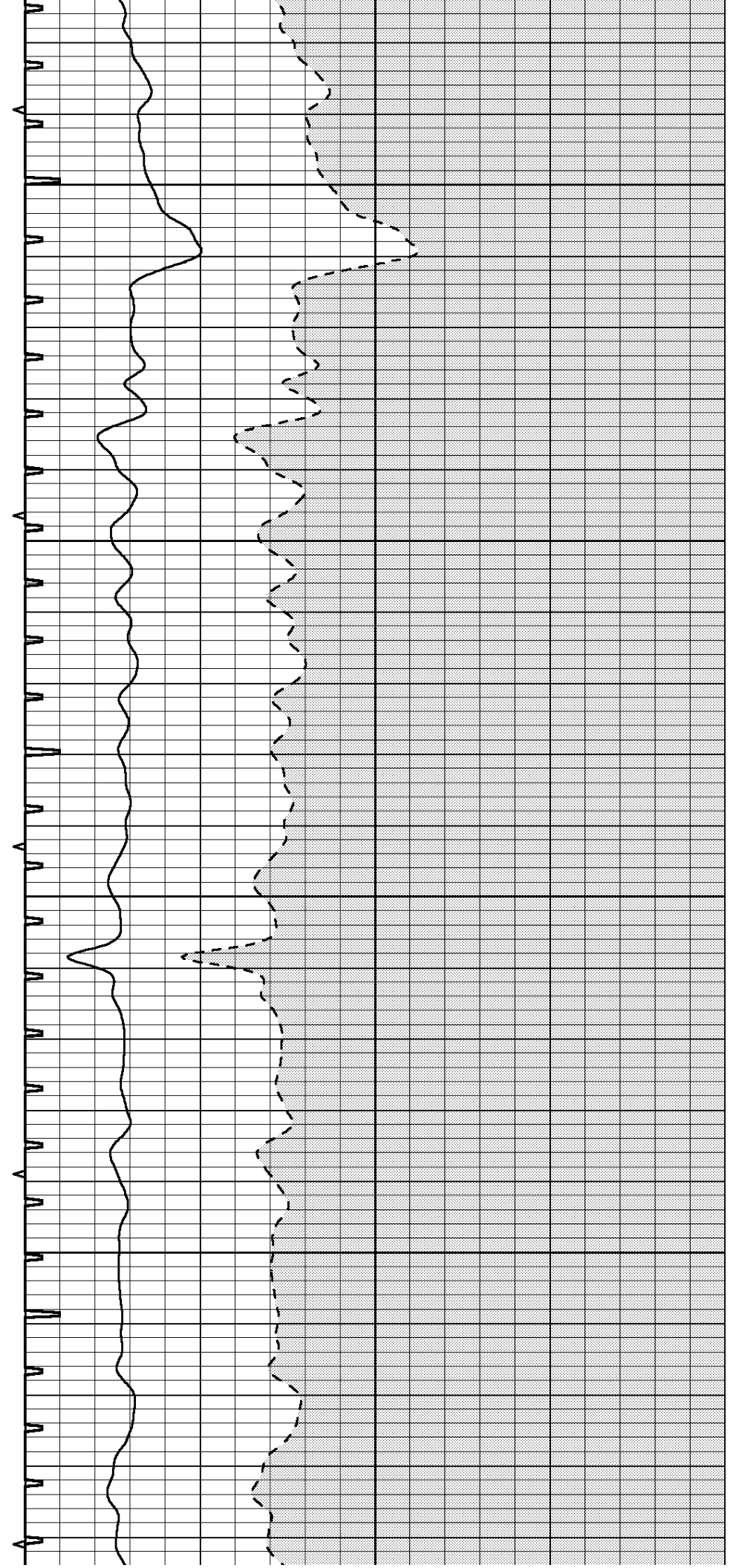
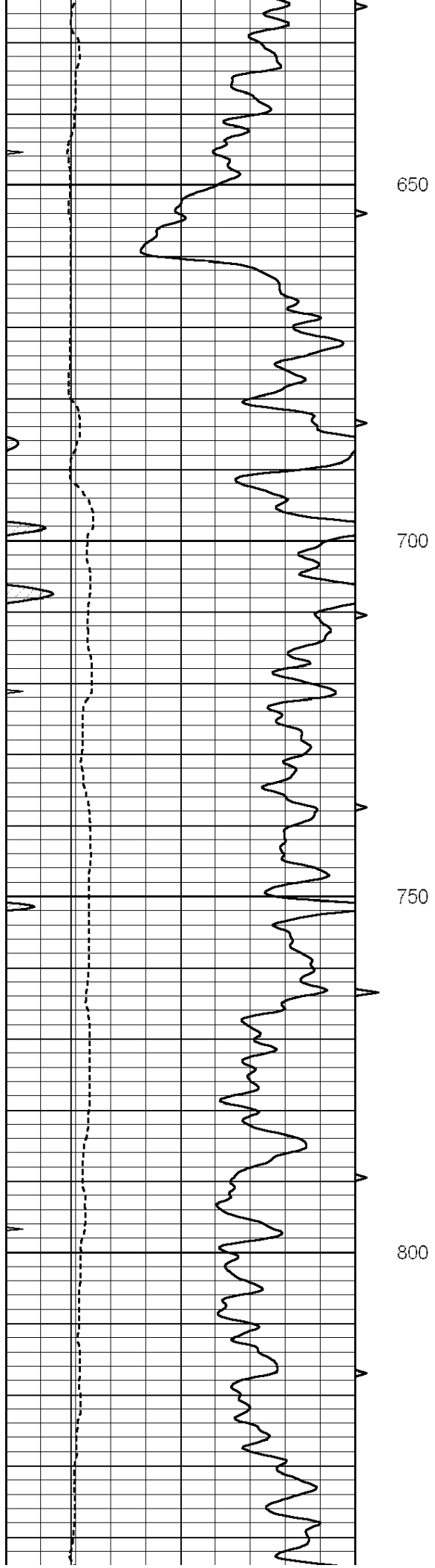
Mon Nov 03 23:56:05 2014

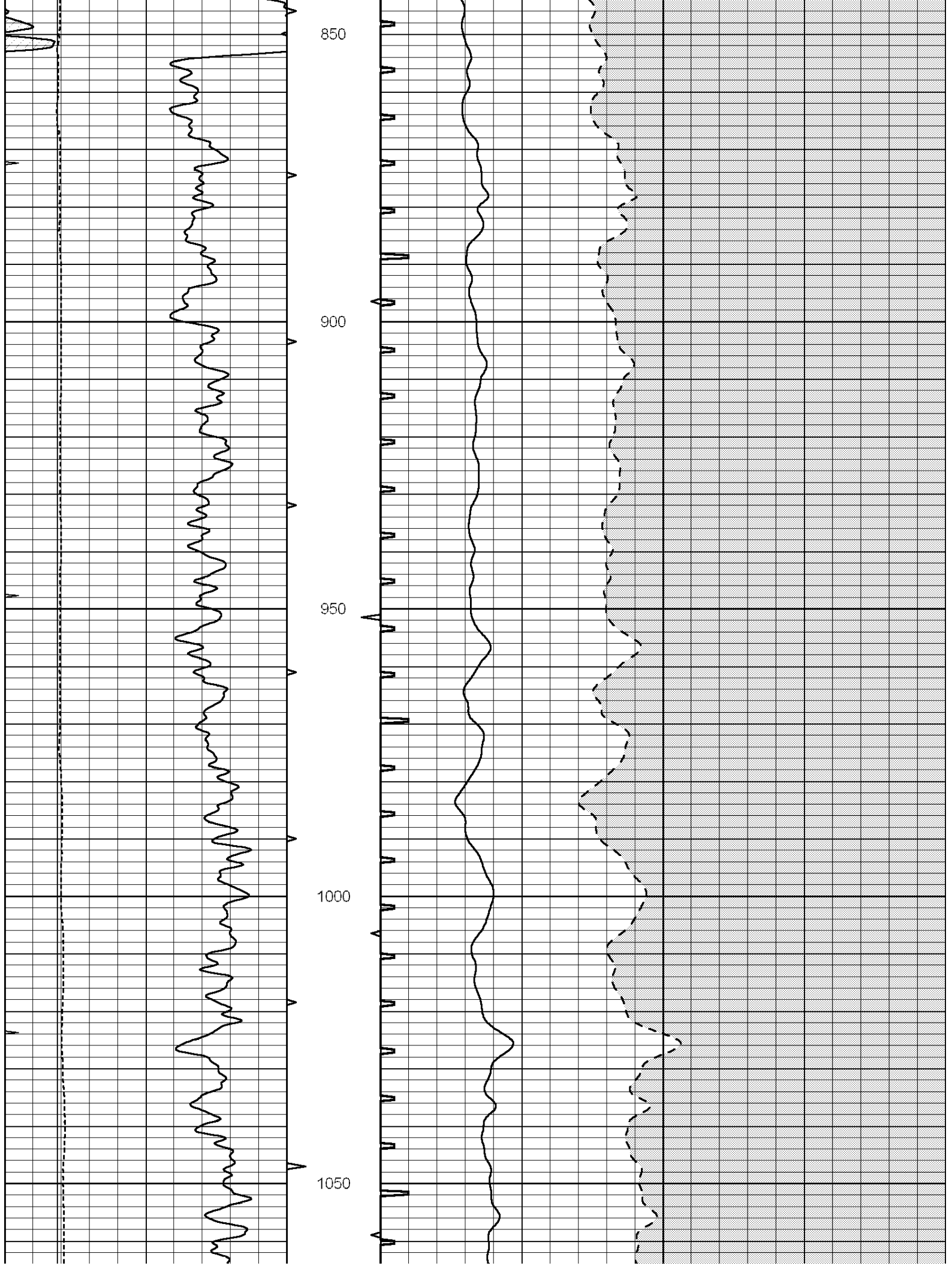
Charted by:

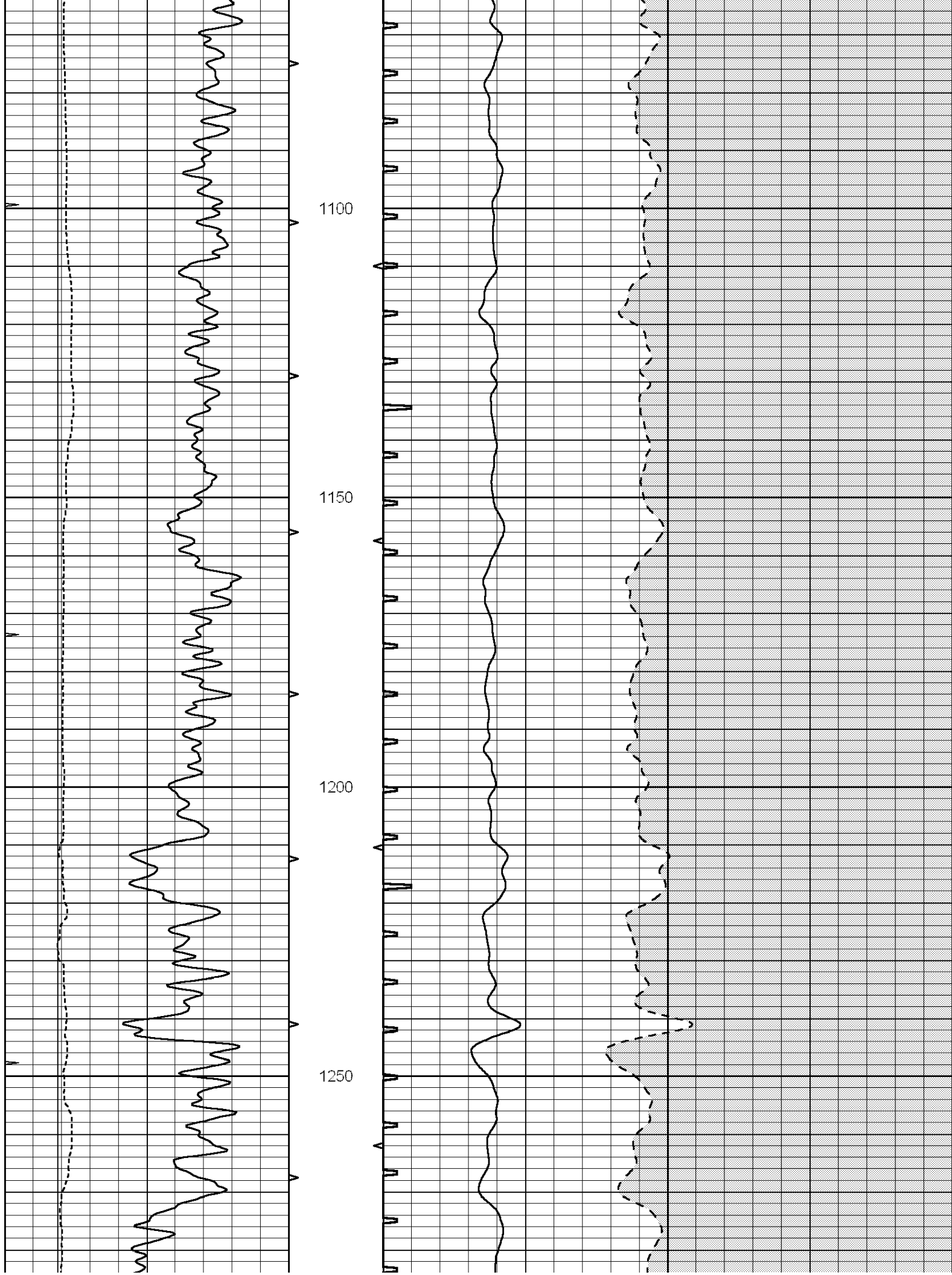
Depth in Feet scaled 1:240

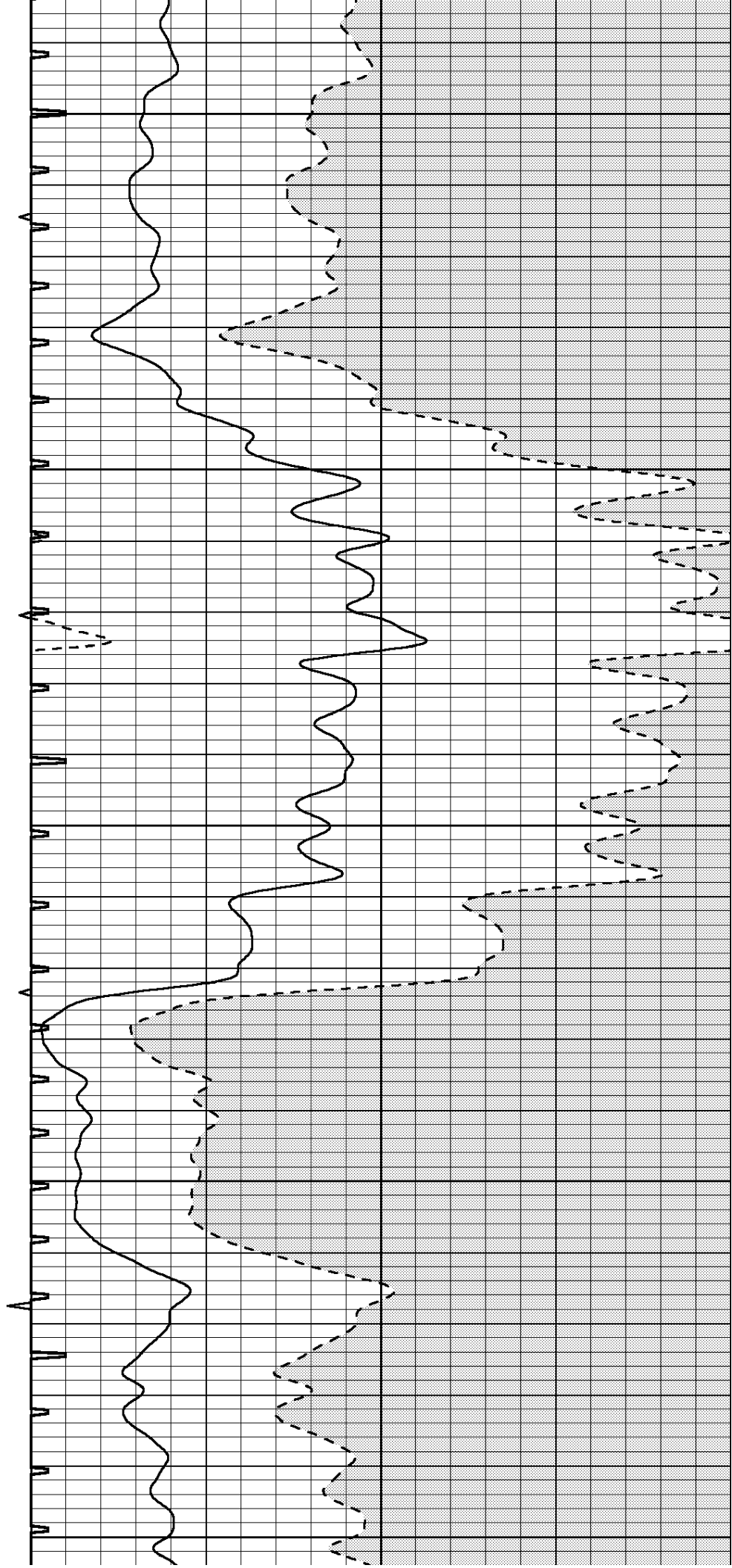
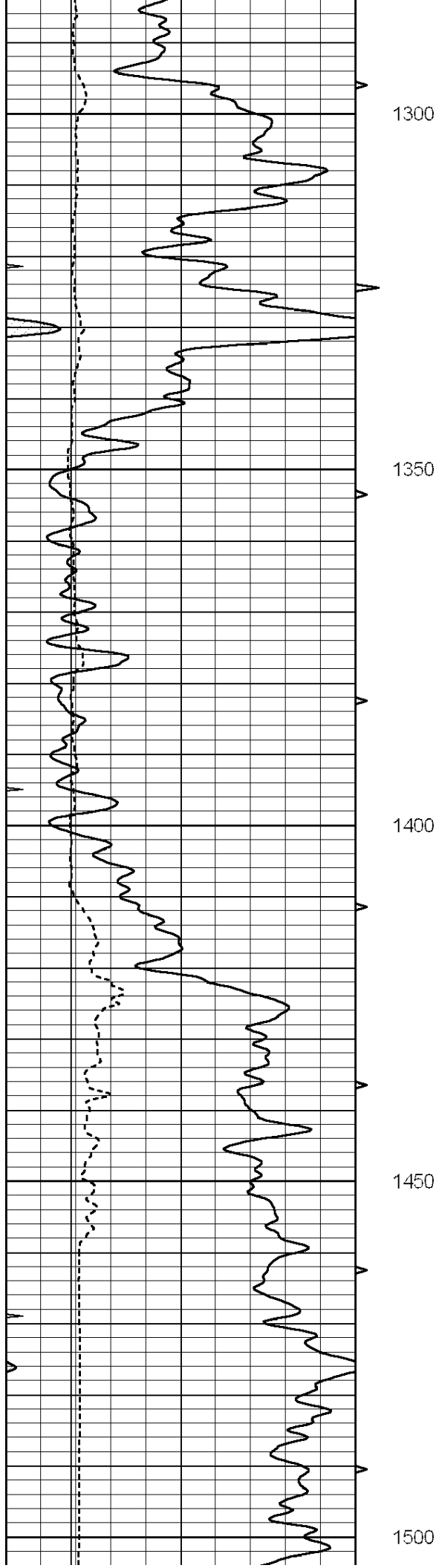
0	GAMMA RAY (GAPI)	150	ABHV	140	DELTA TIME (usec/ft)		40
6	CALIPER (in)	16	10 (ft3)	0	30	SONIC POROSITY (pu)	
-----			-----				
0	MINMK	20	TBHV	0	ITT (msec)	20	
			0 (ft3)	10			

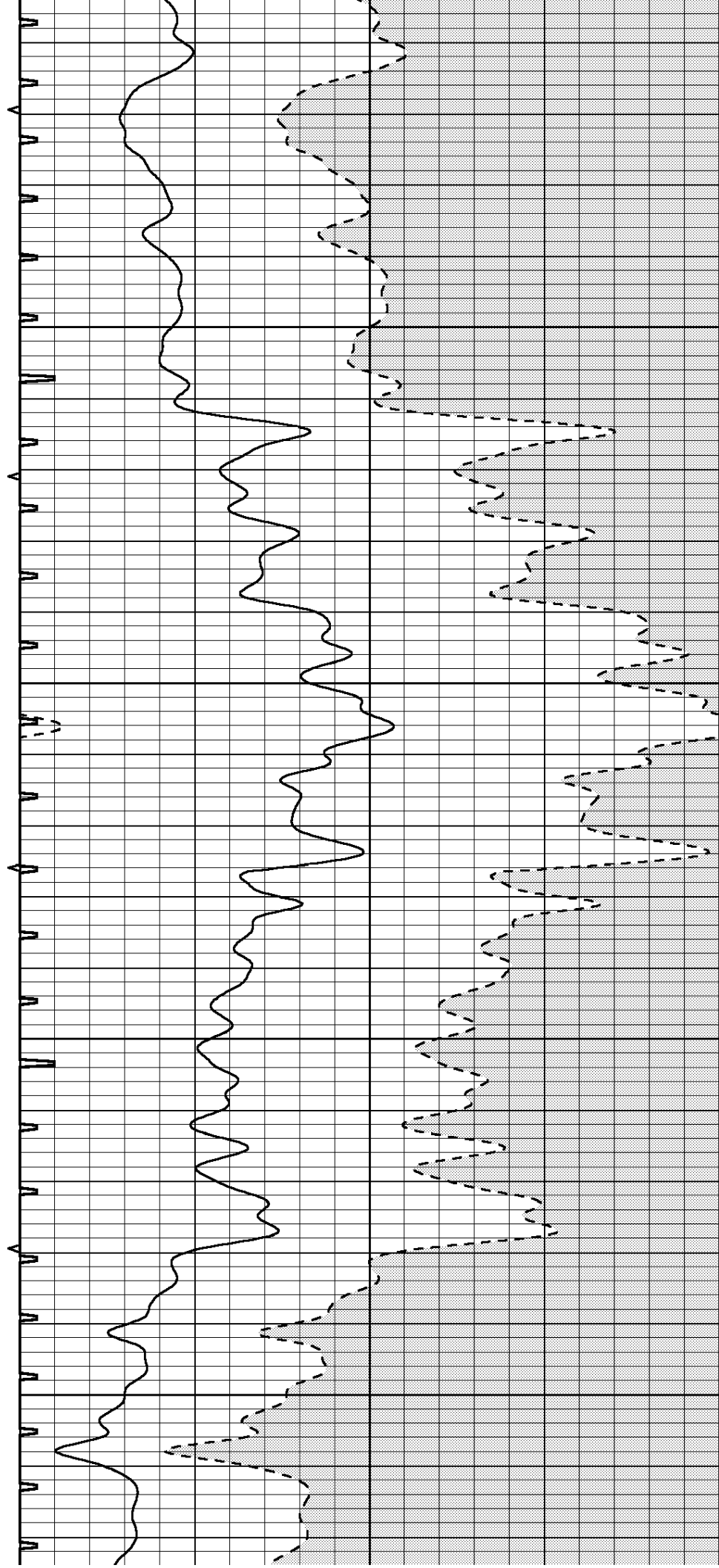
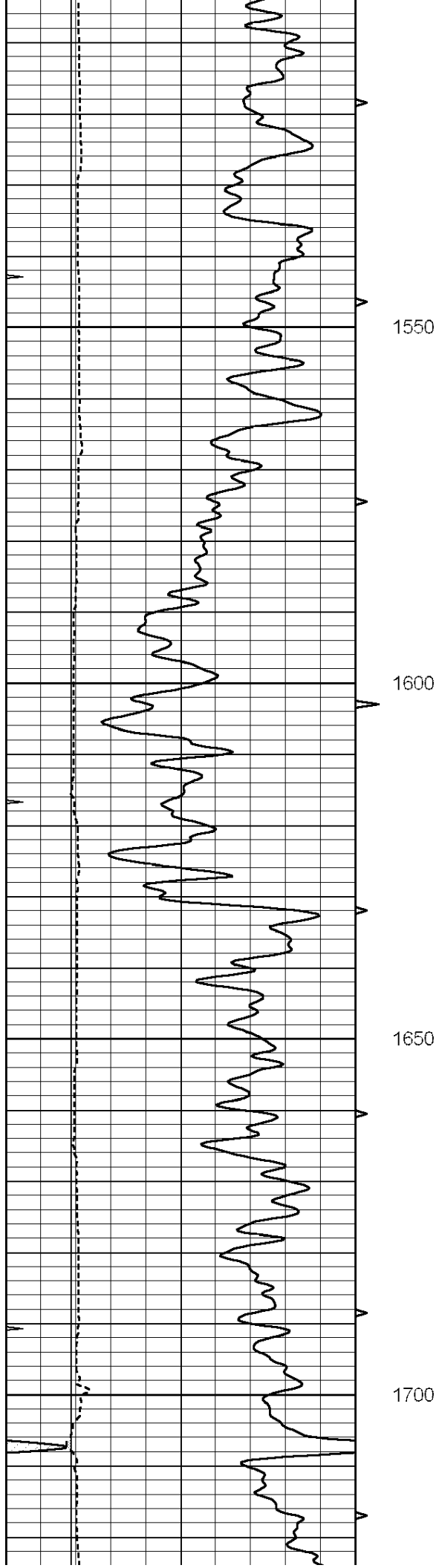


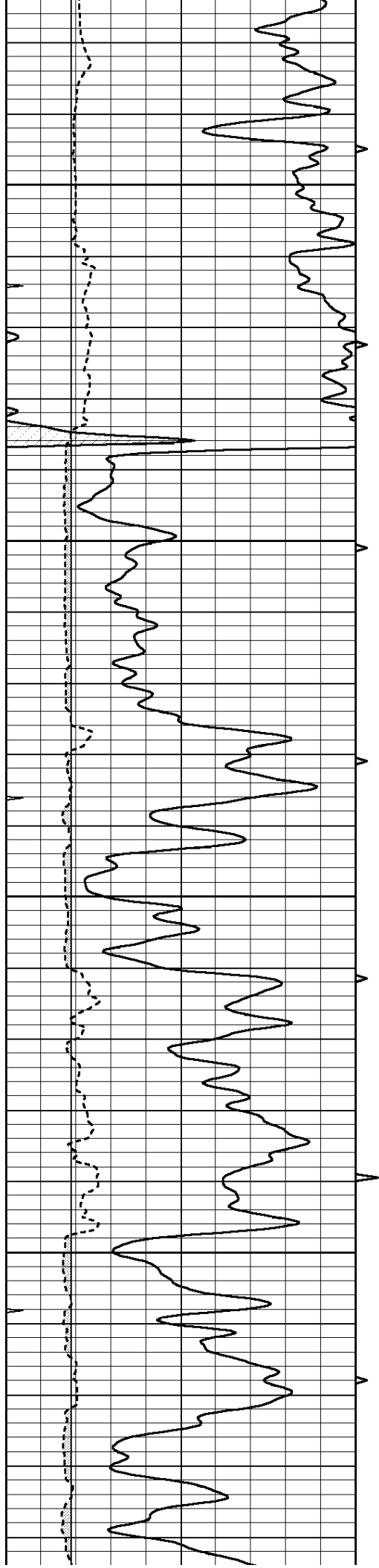










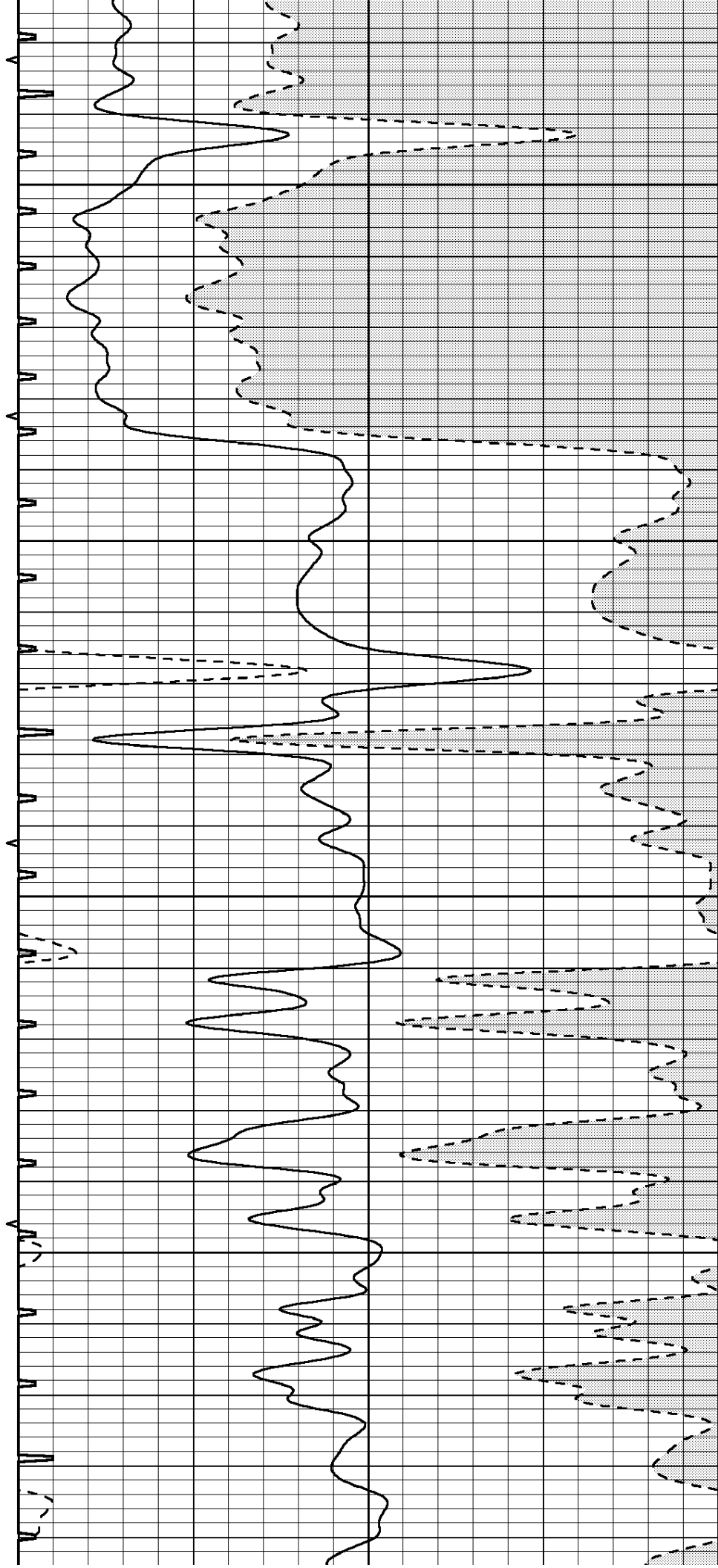


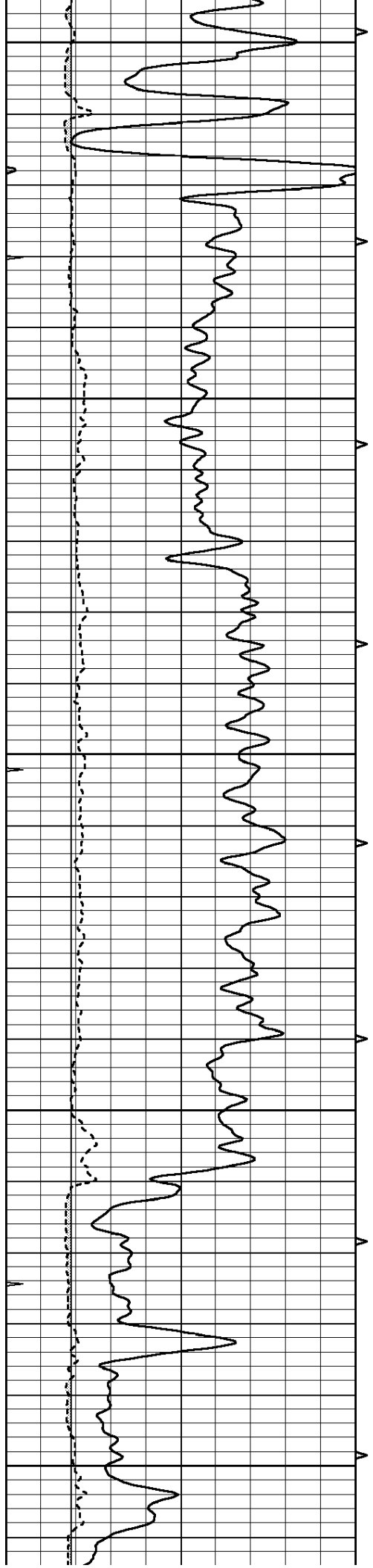
1750

1800

1850

1900





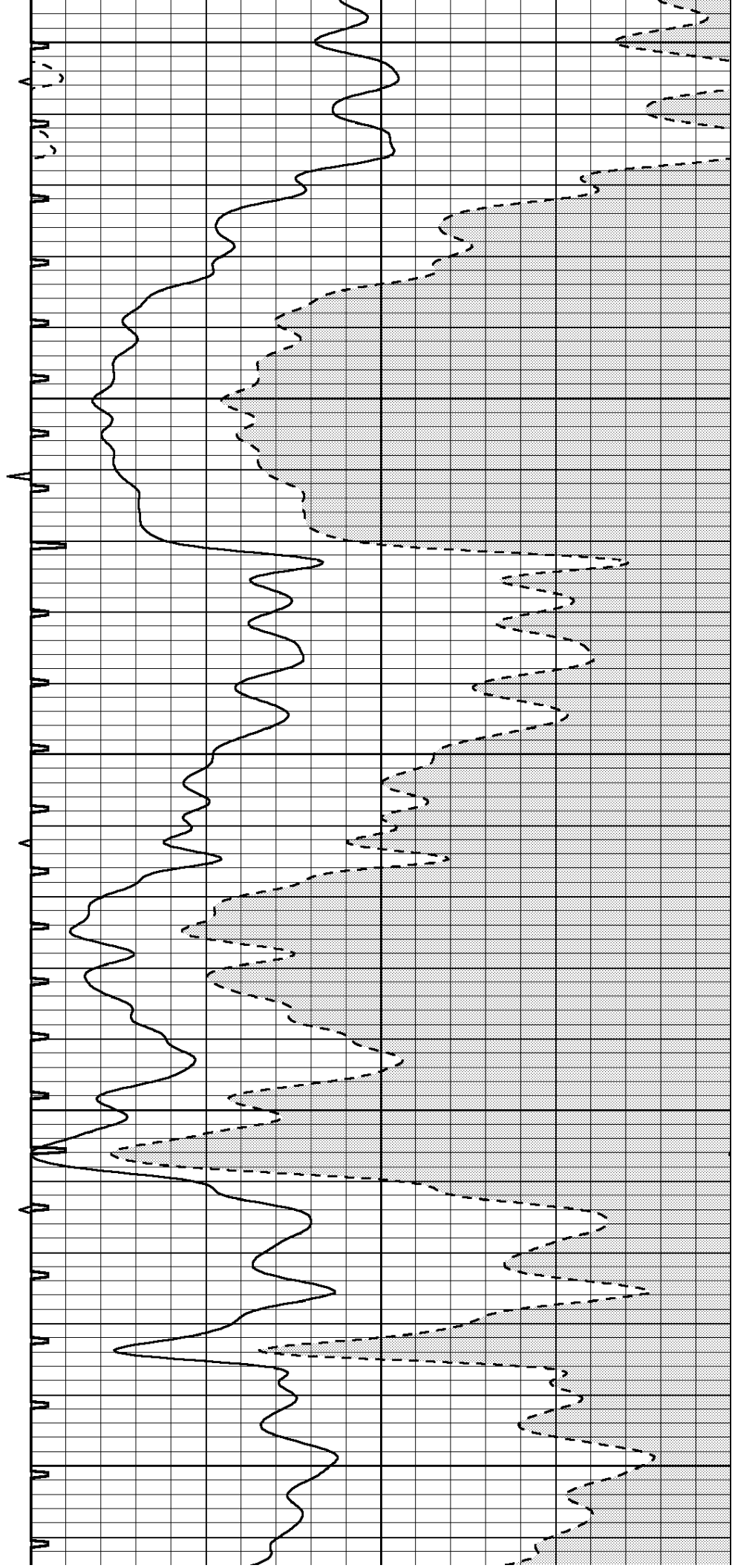
1950

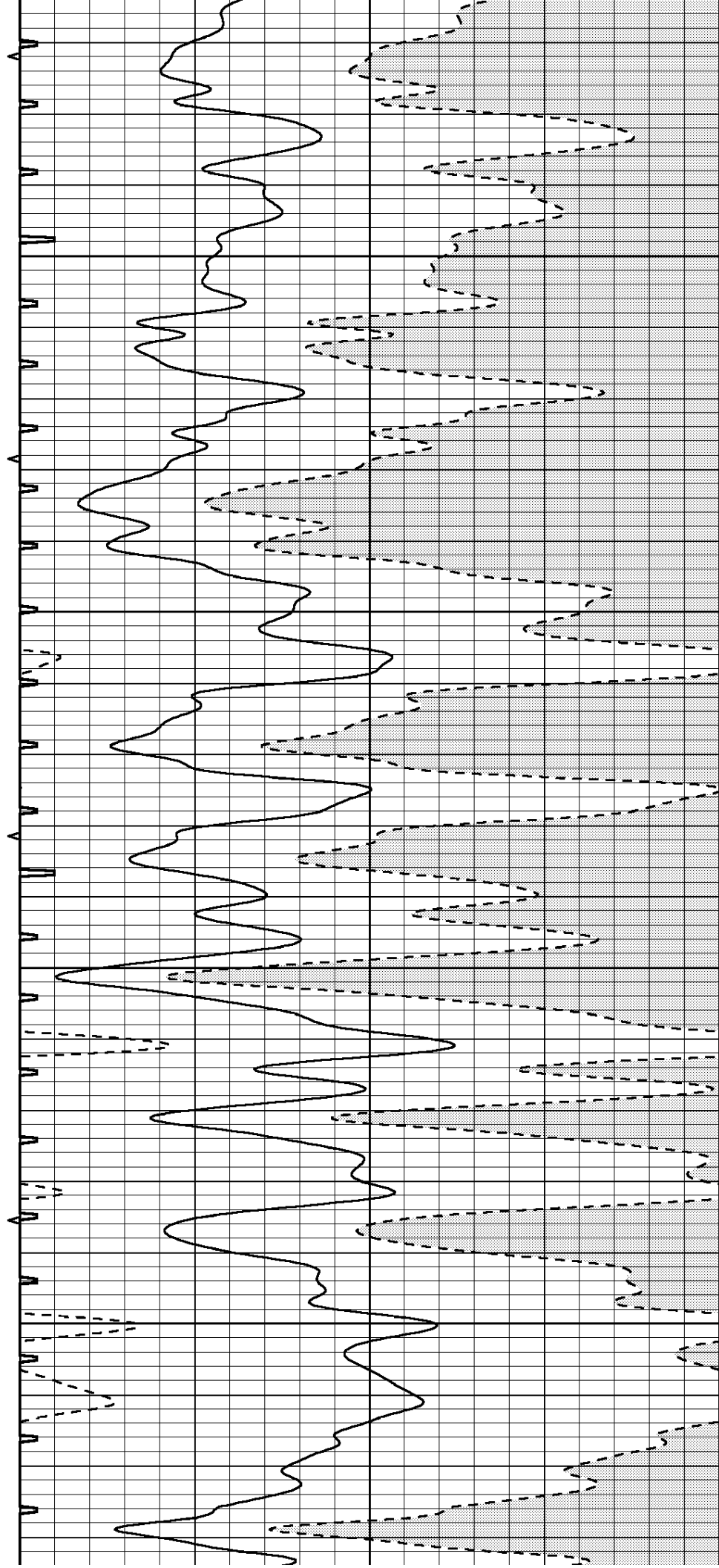
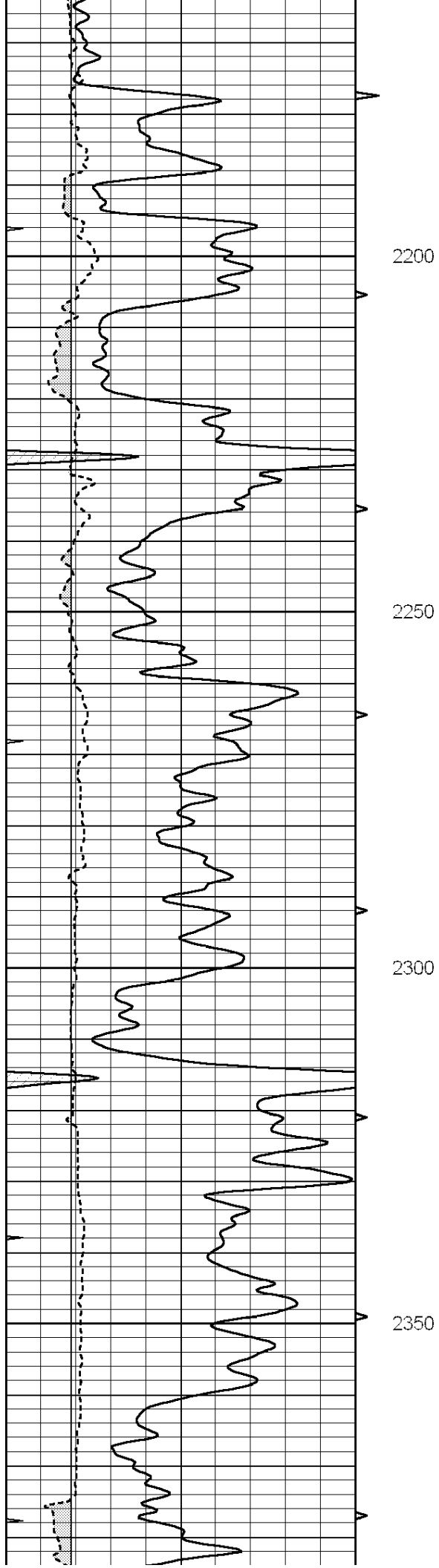
2000

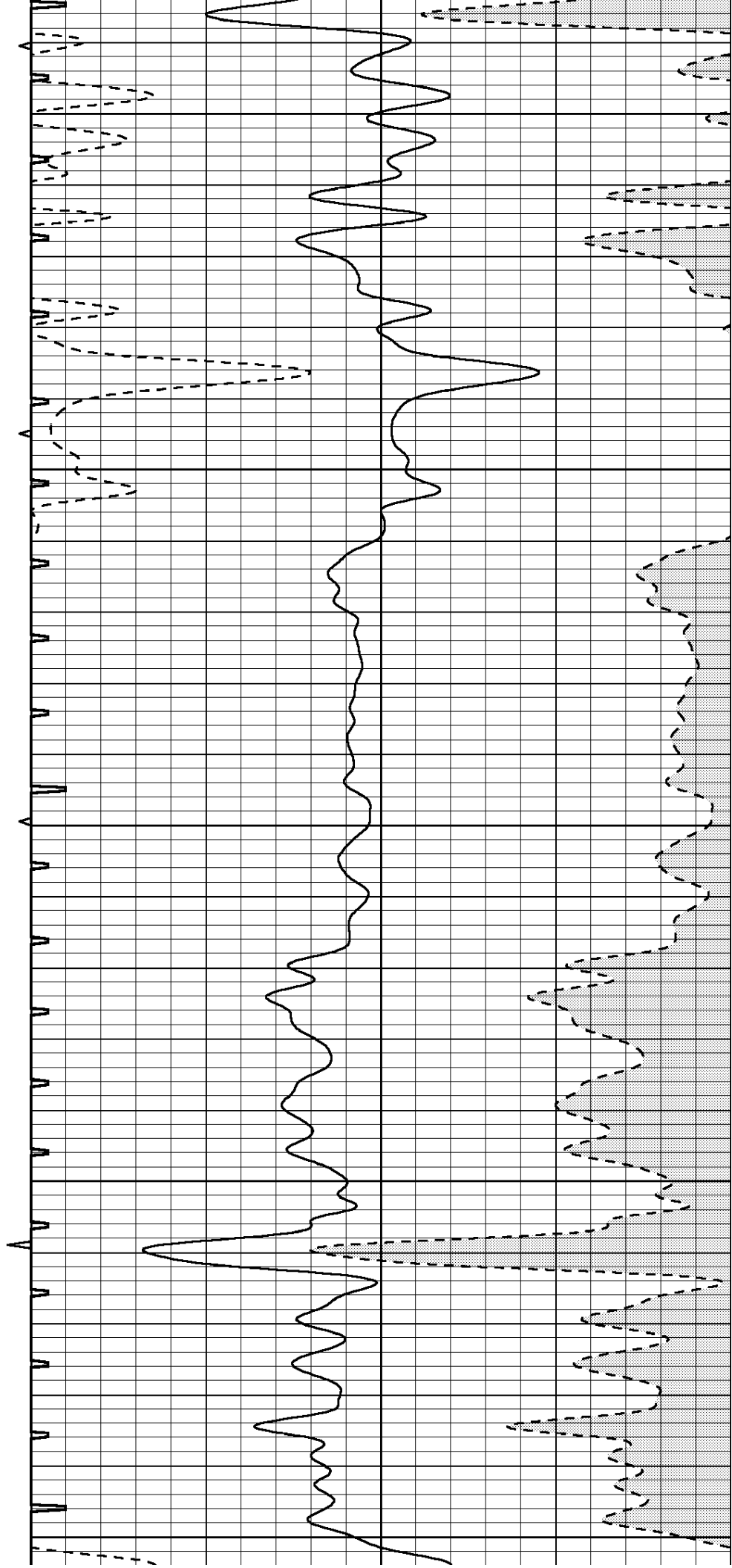
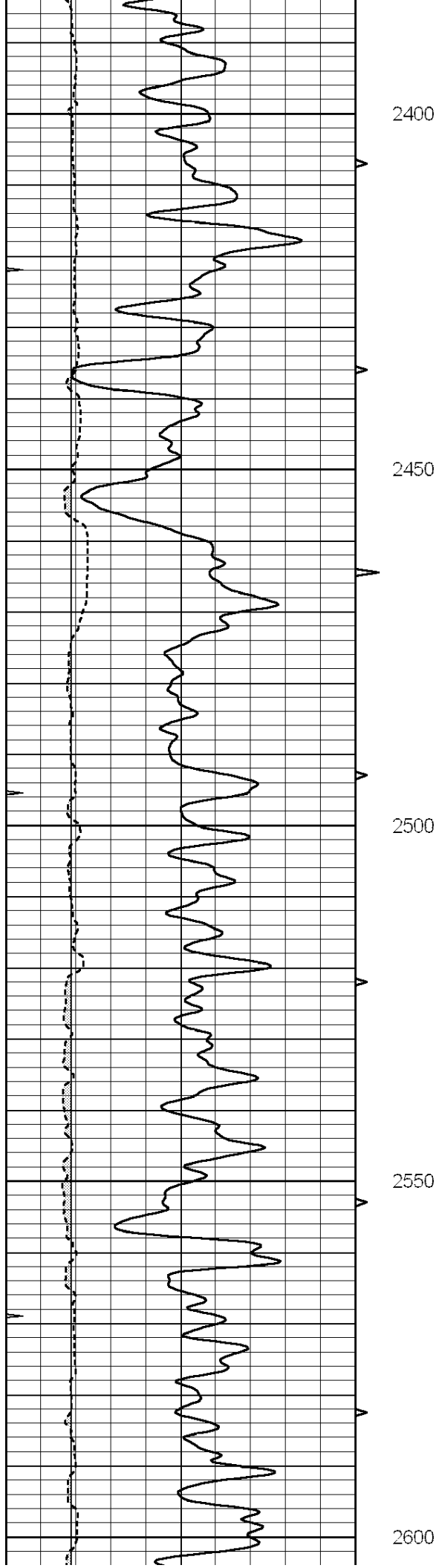
2050

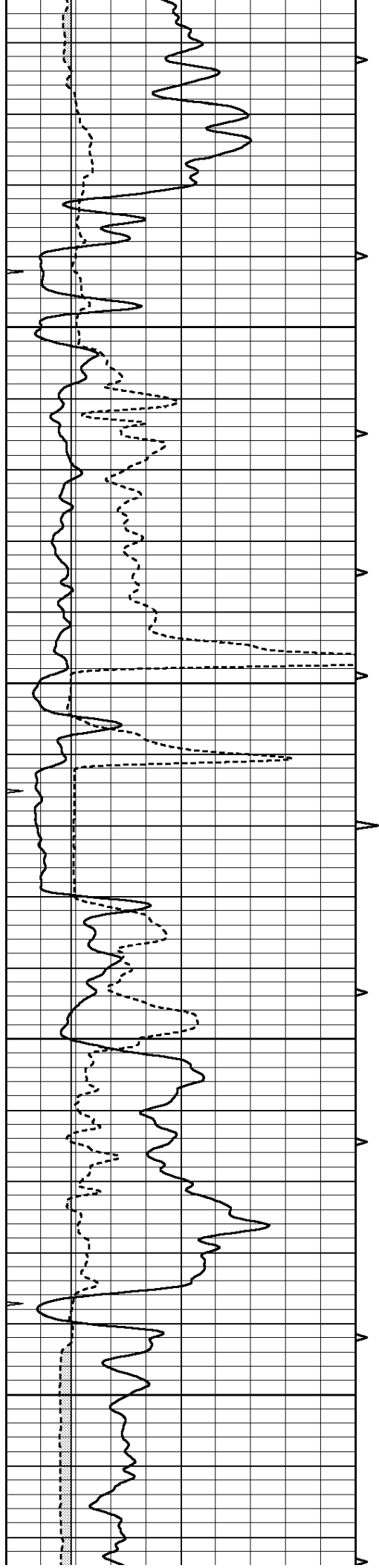
2100

2150







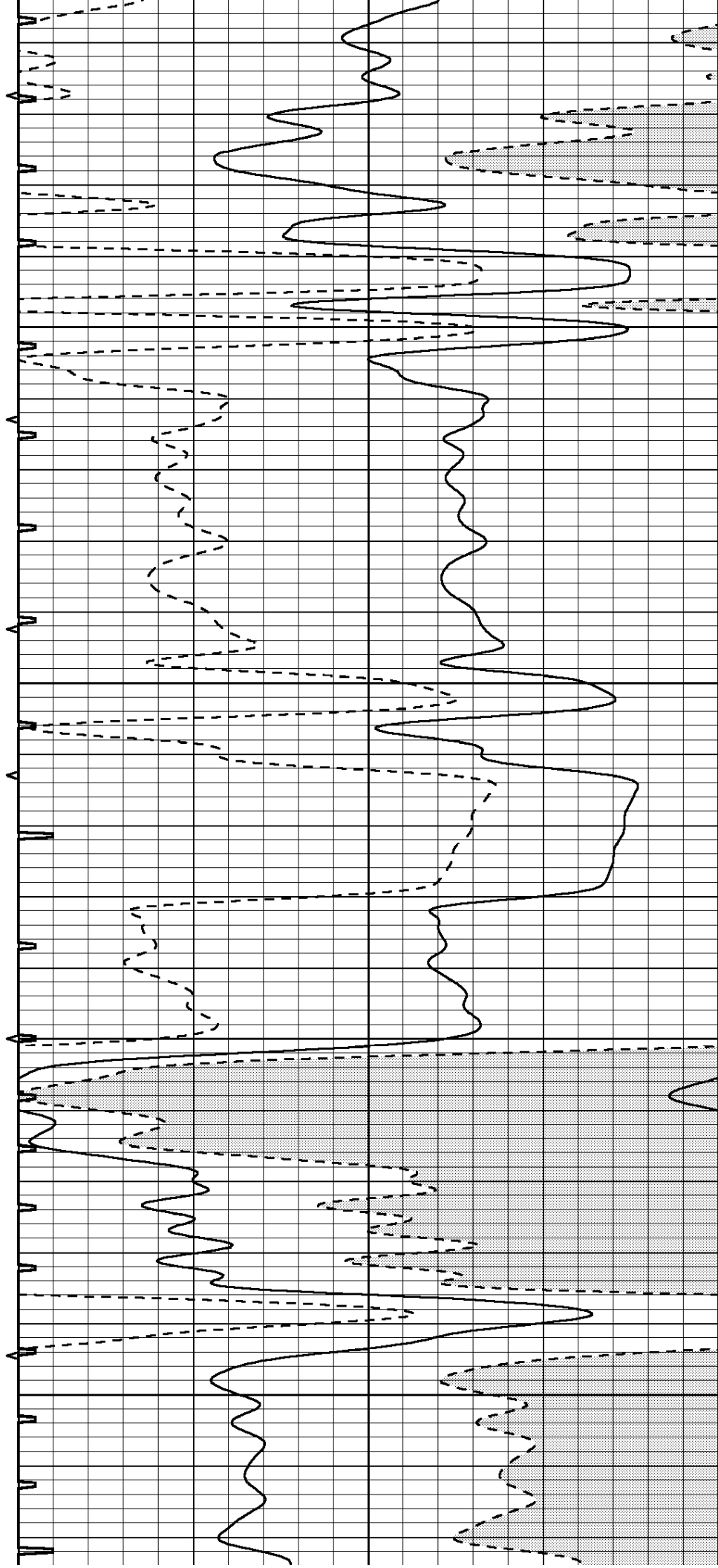


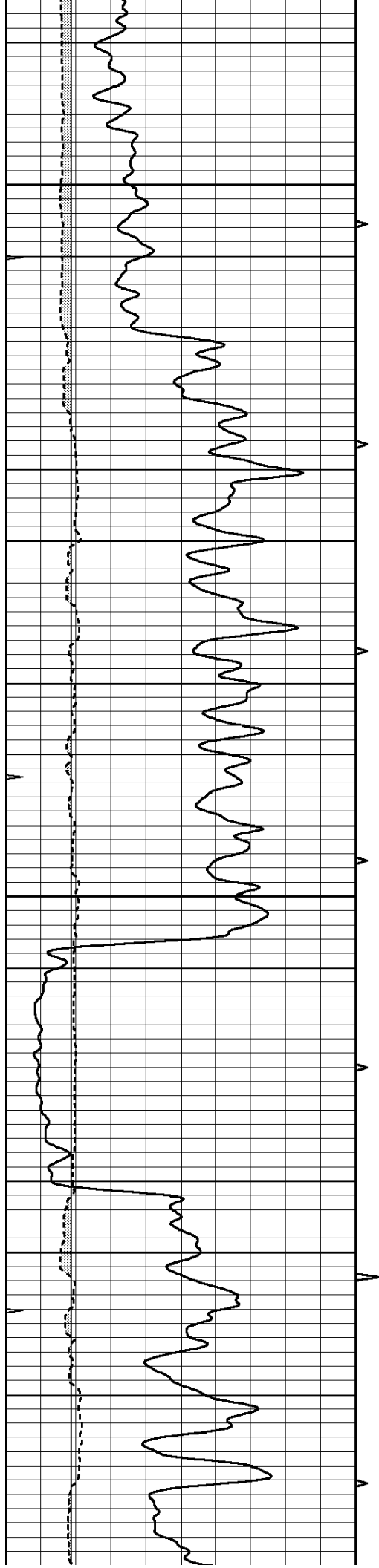
2650

2700

2750

2800



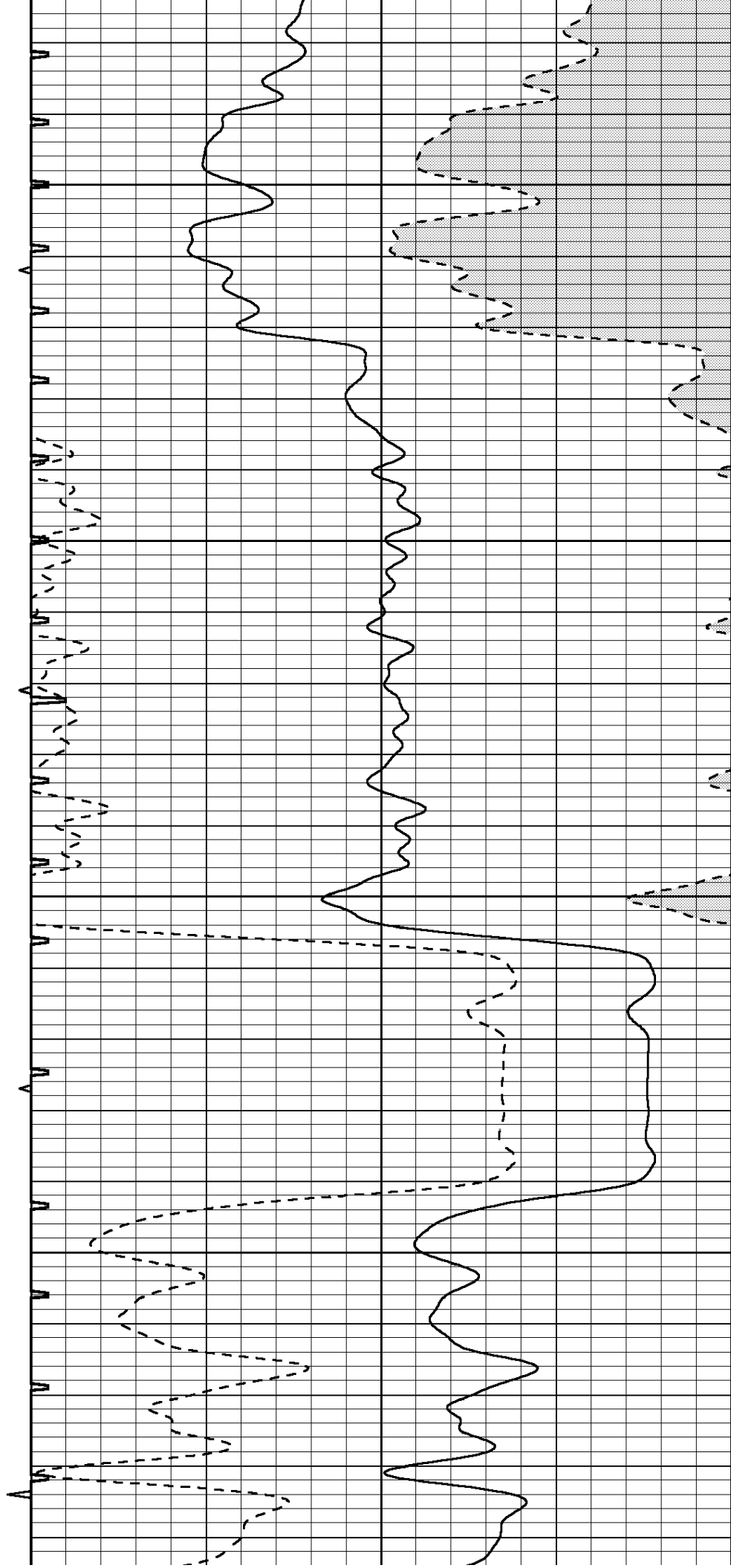


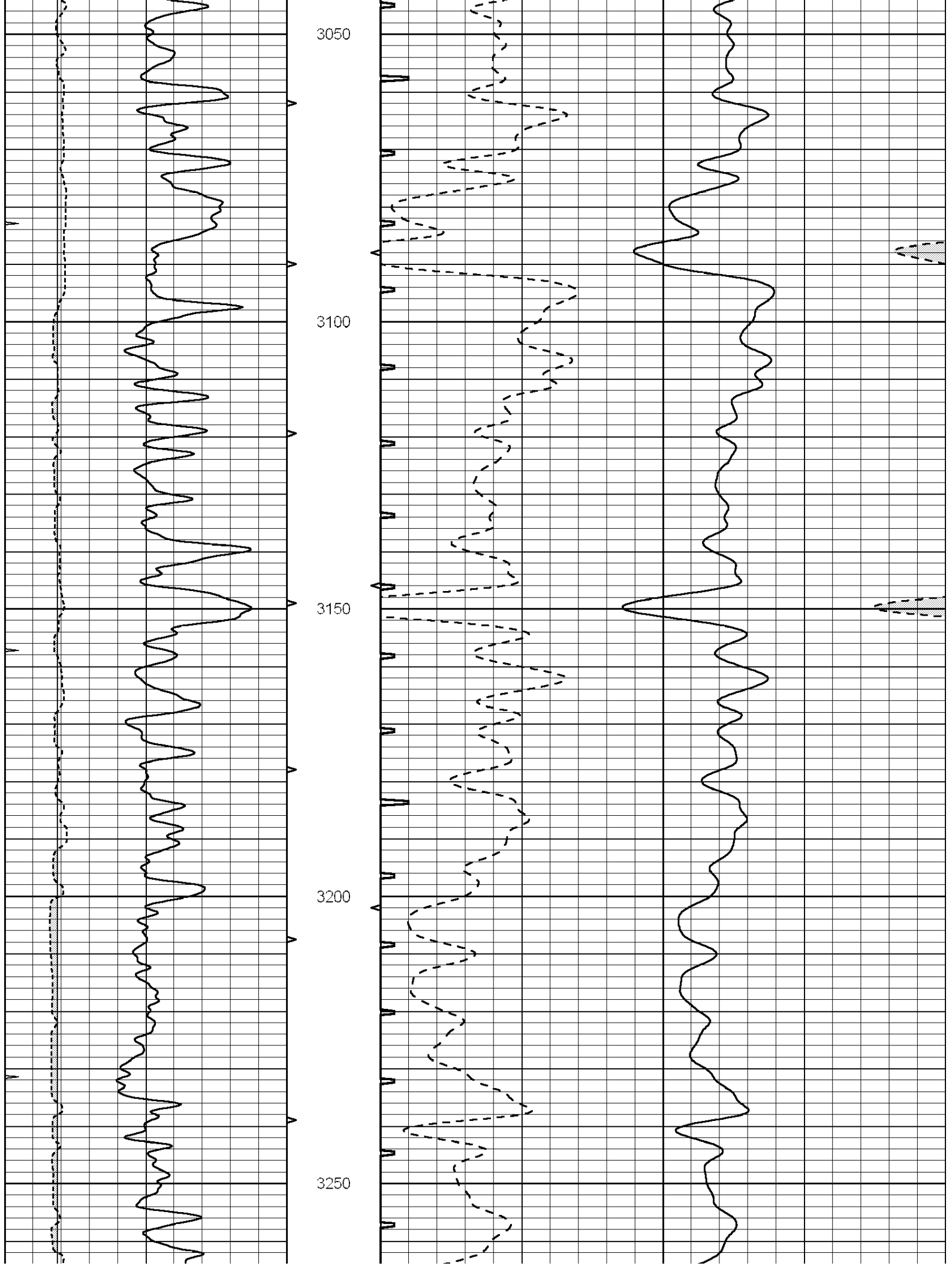
2850

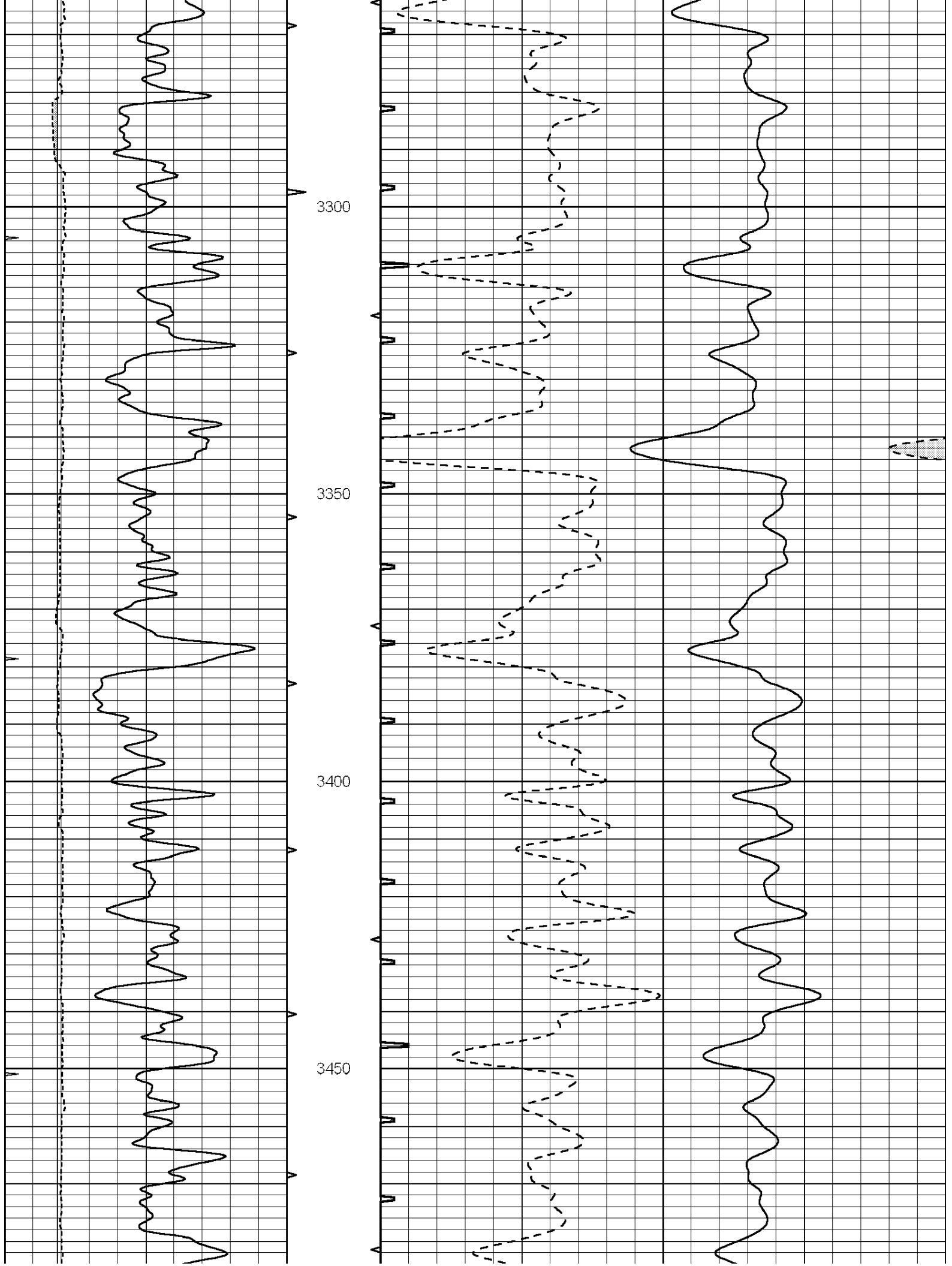
2900

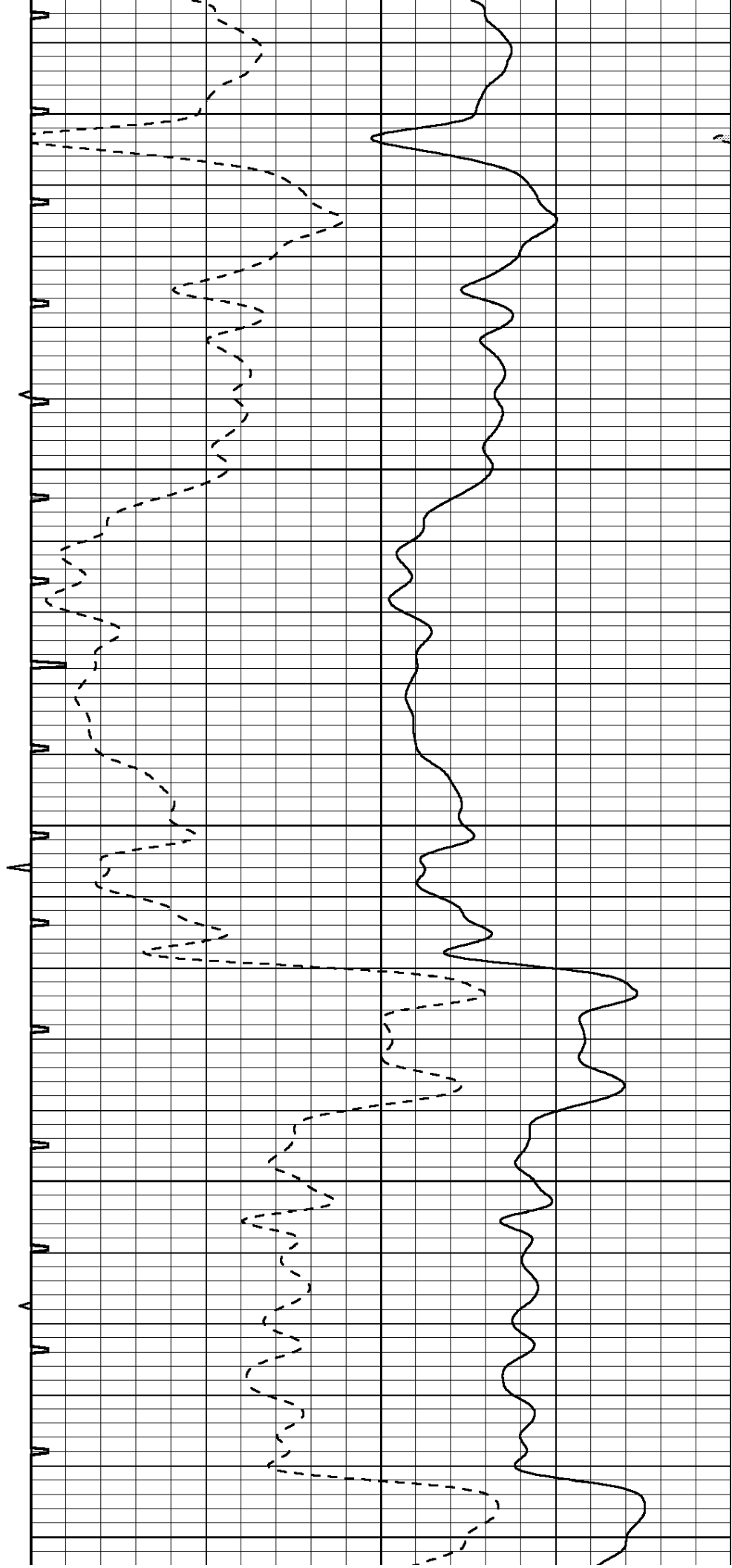
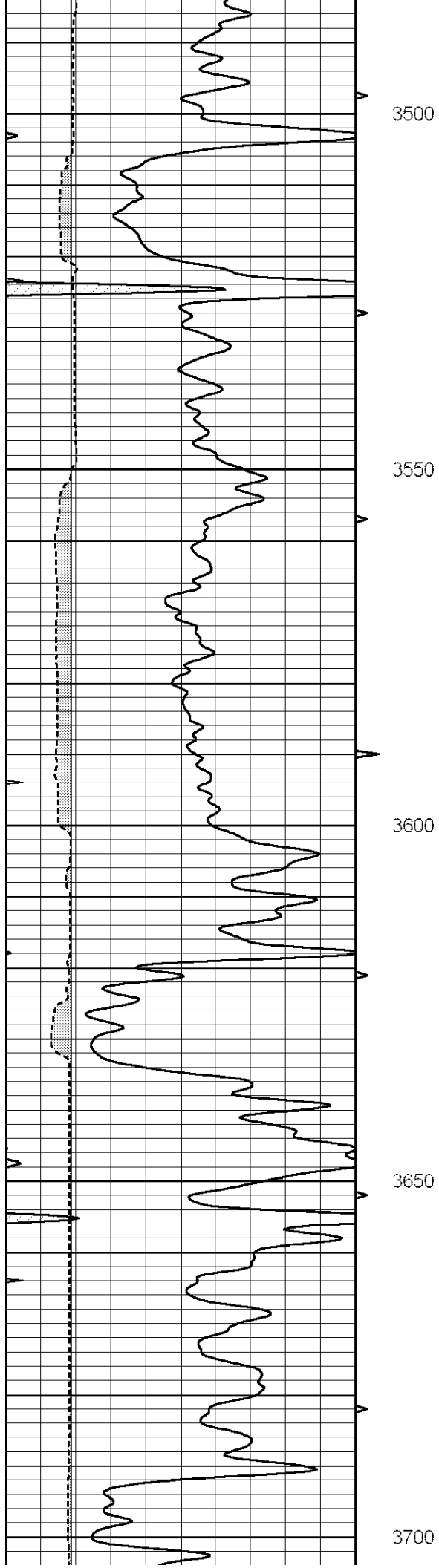
2950

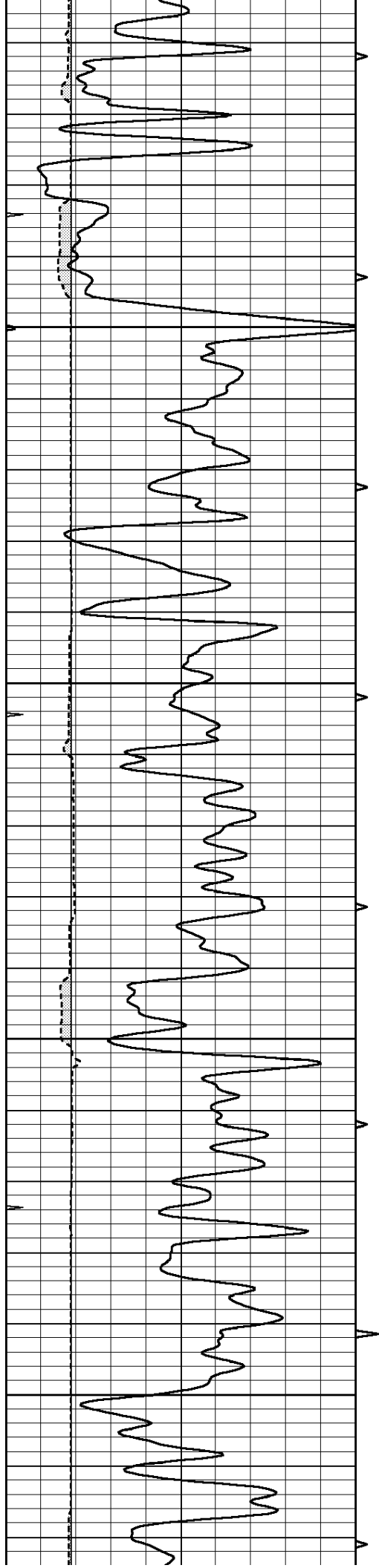
3000









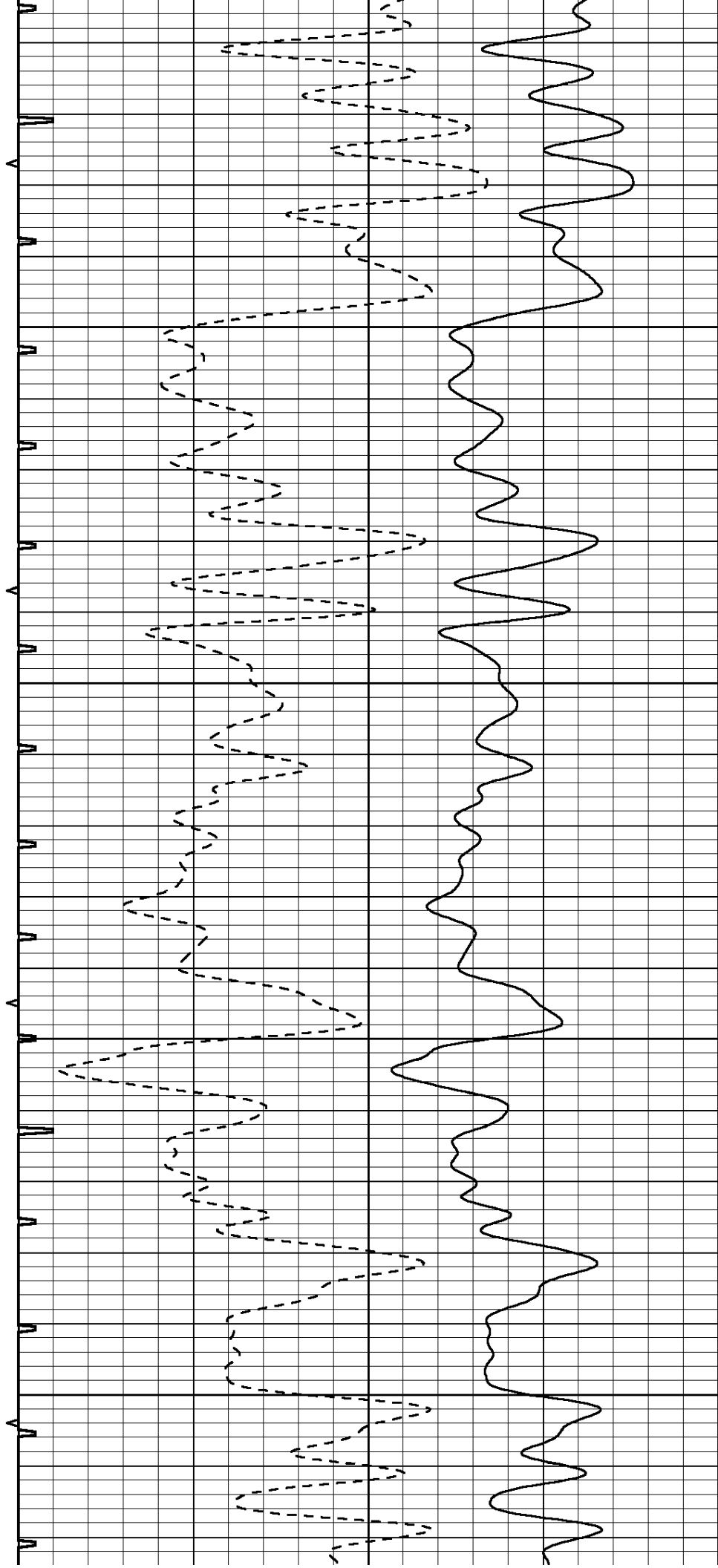


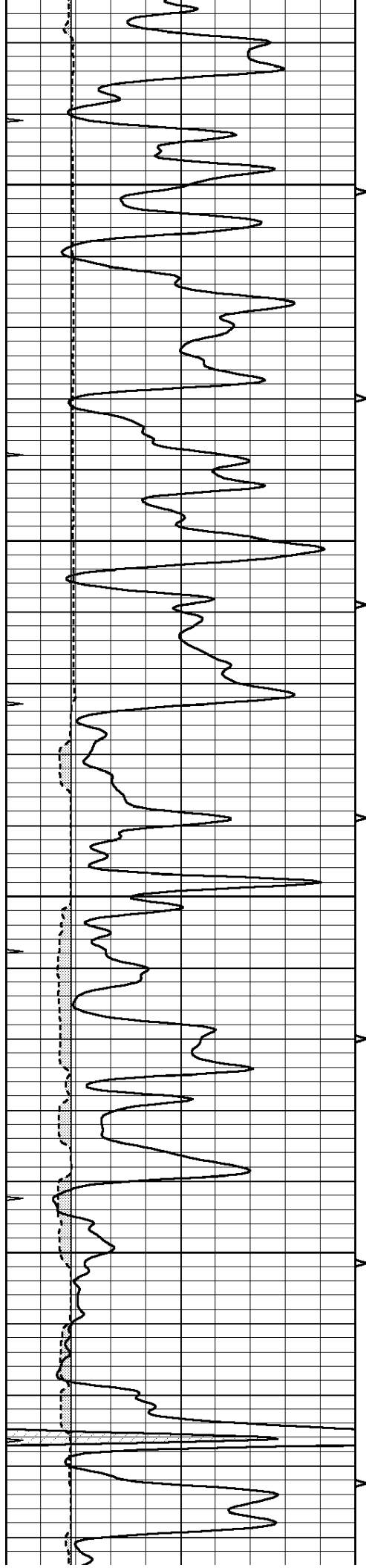
3750

3800

3850

3900



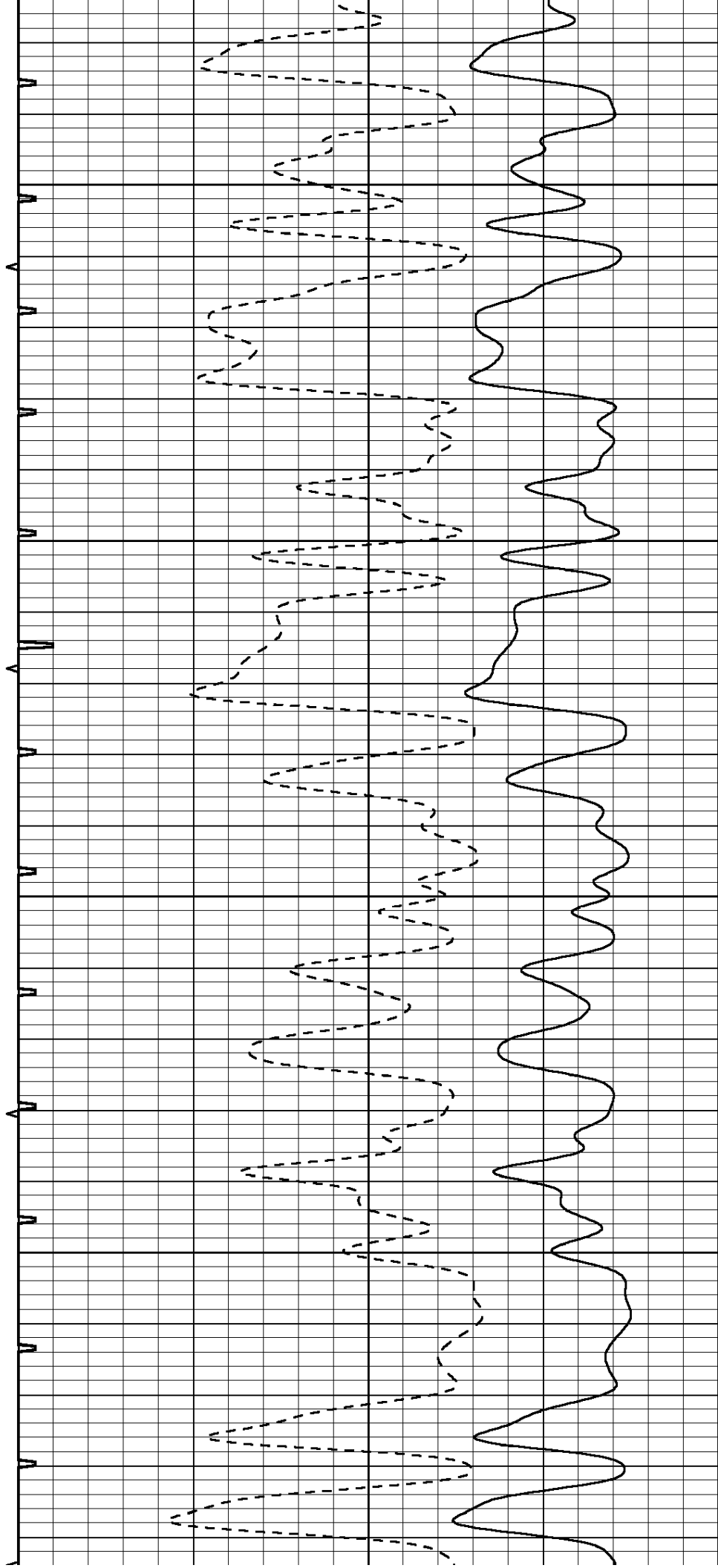


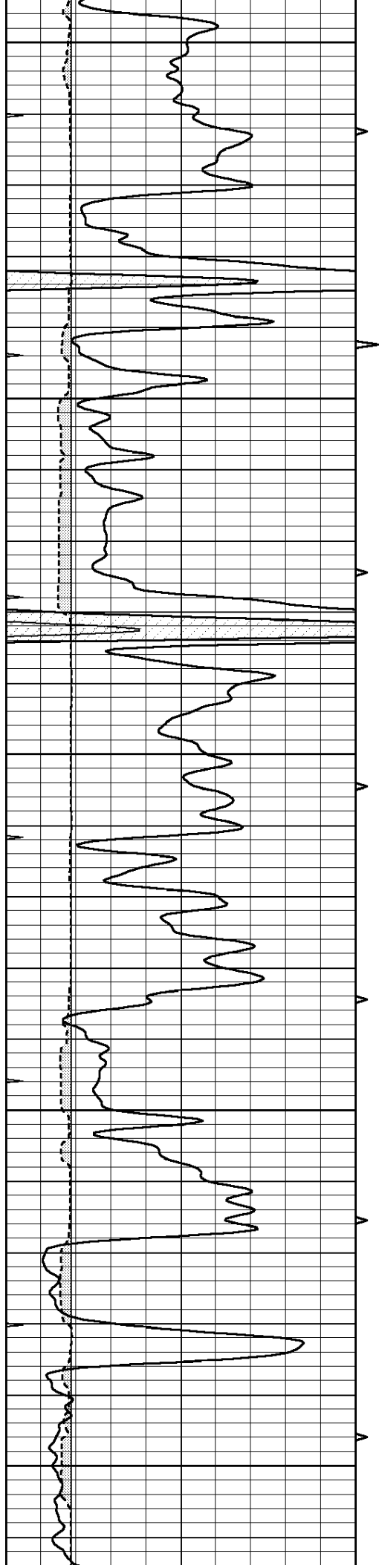
3950

4000

4050

4100





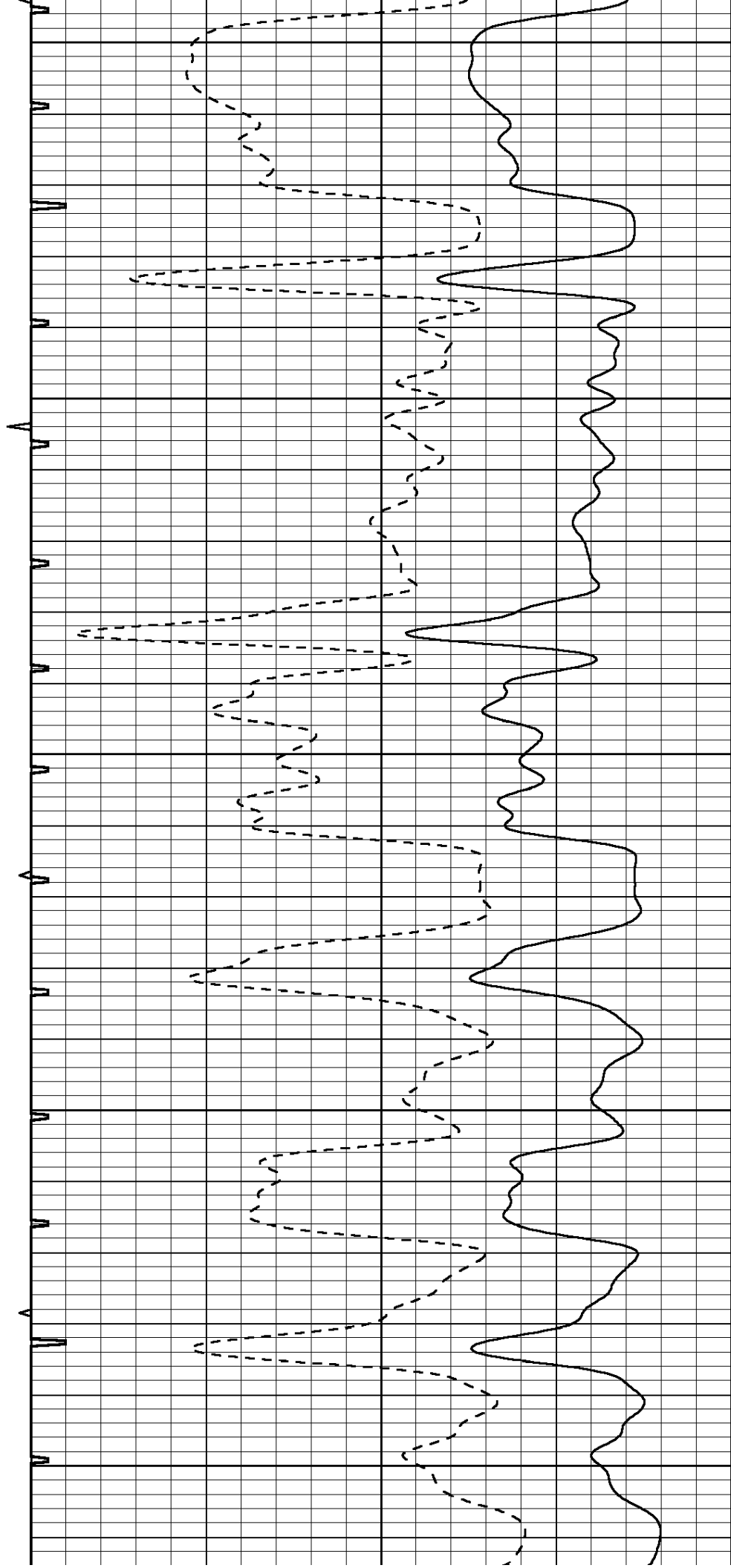
4150

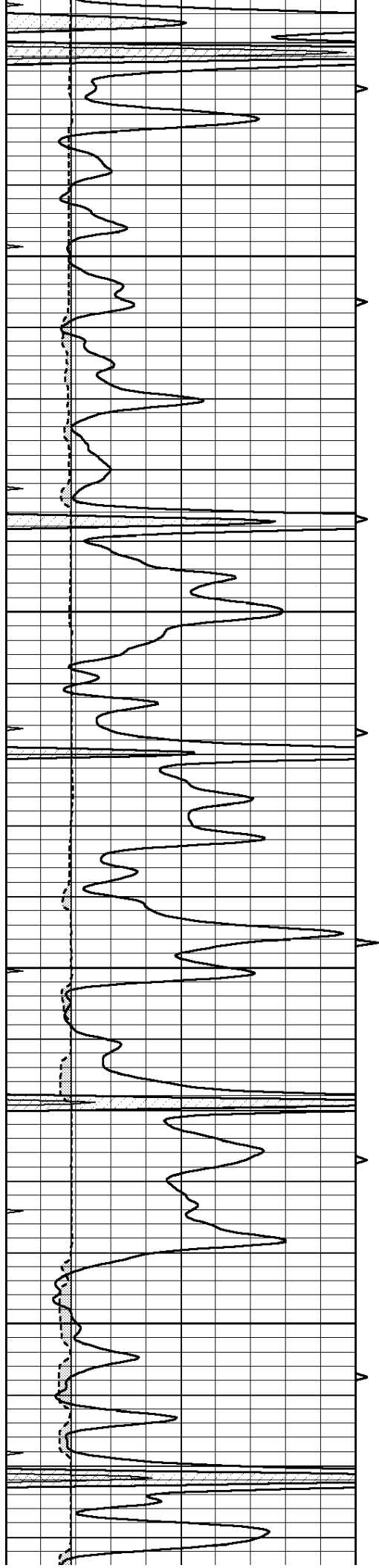
4200

4250

4300

4350



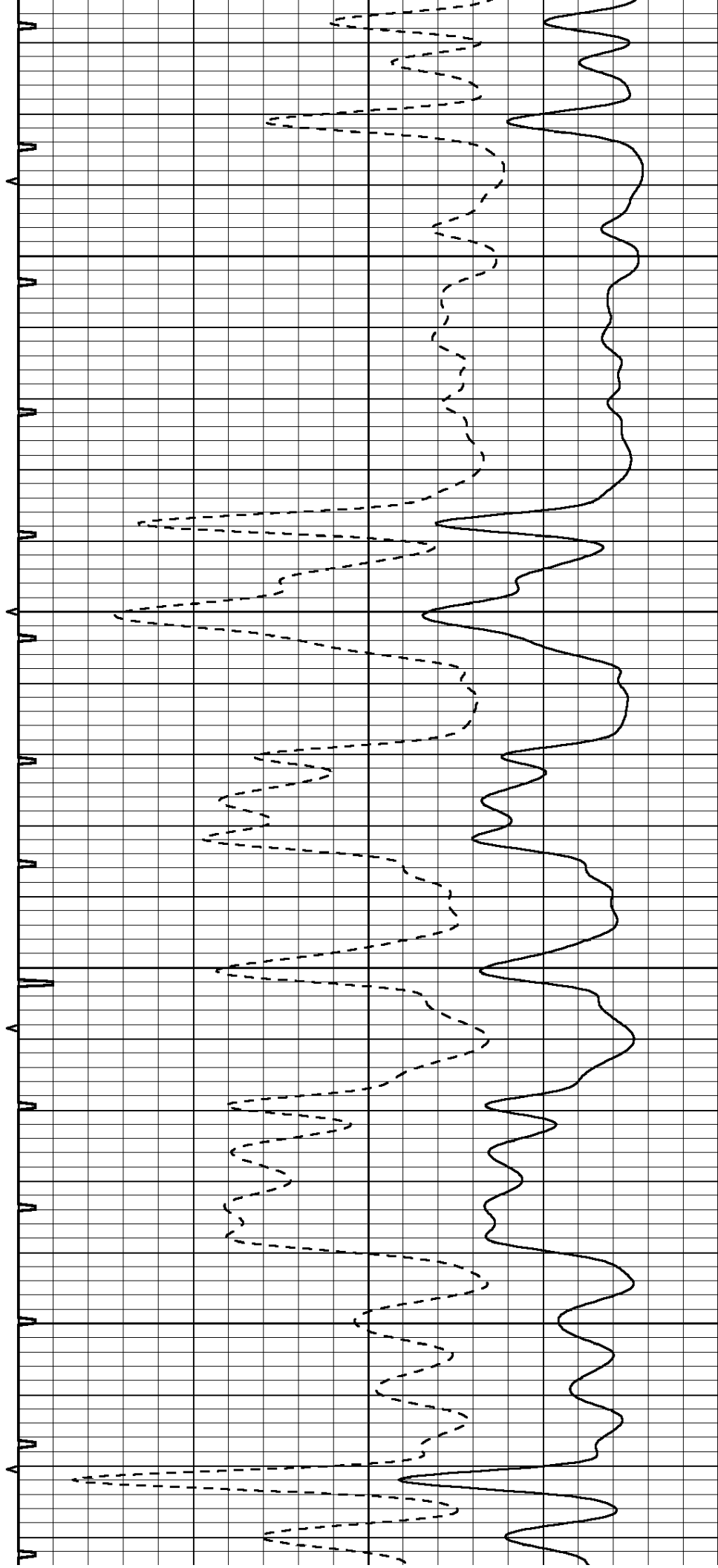


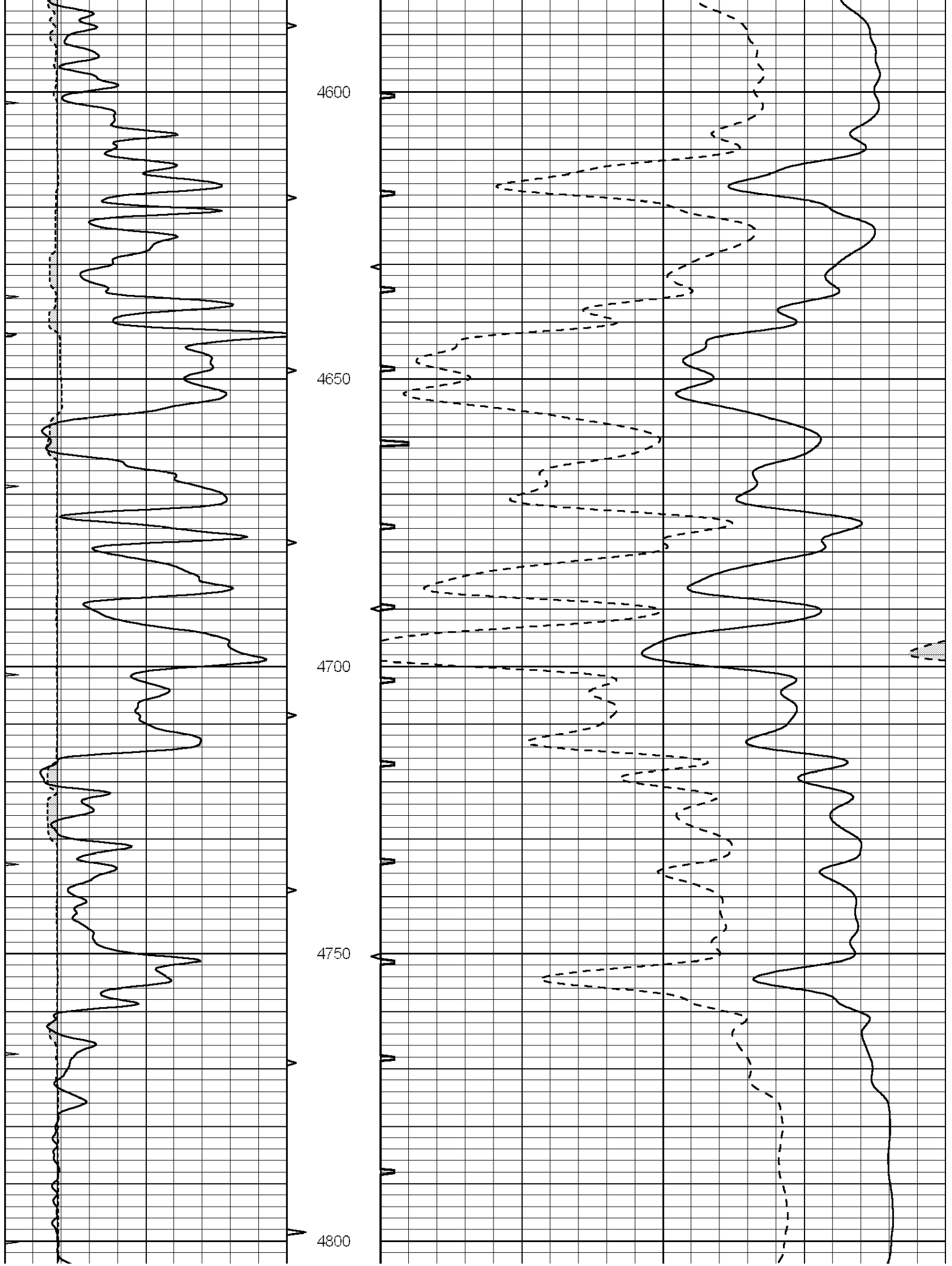
4400

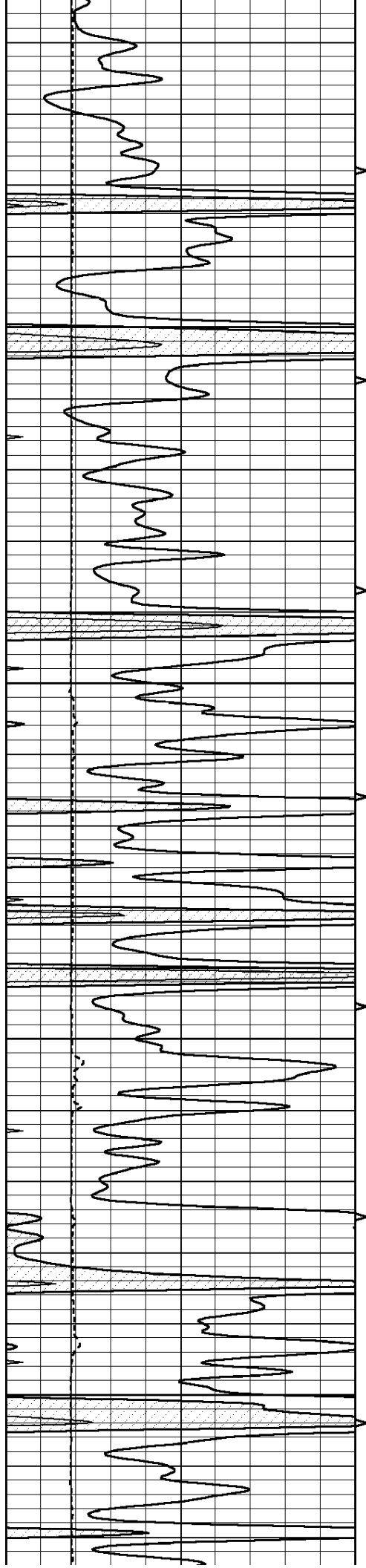
4450

4500

4550





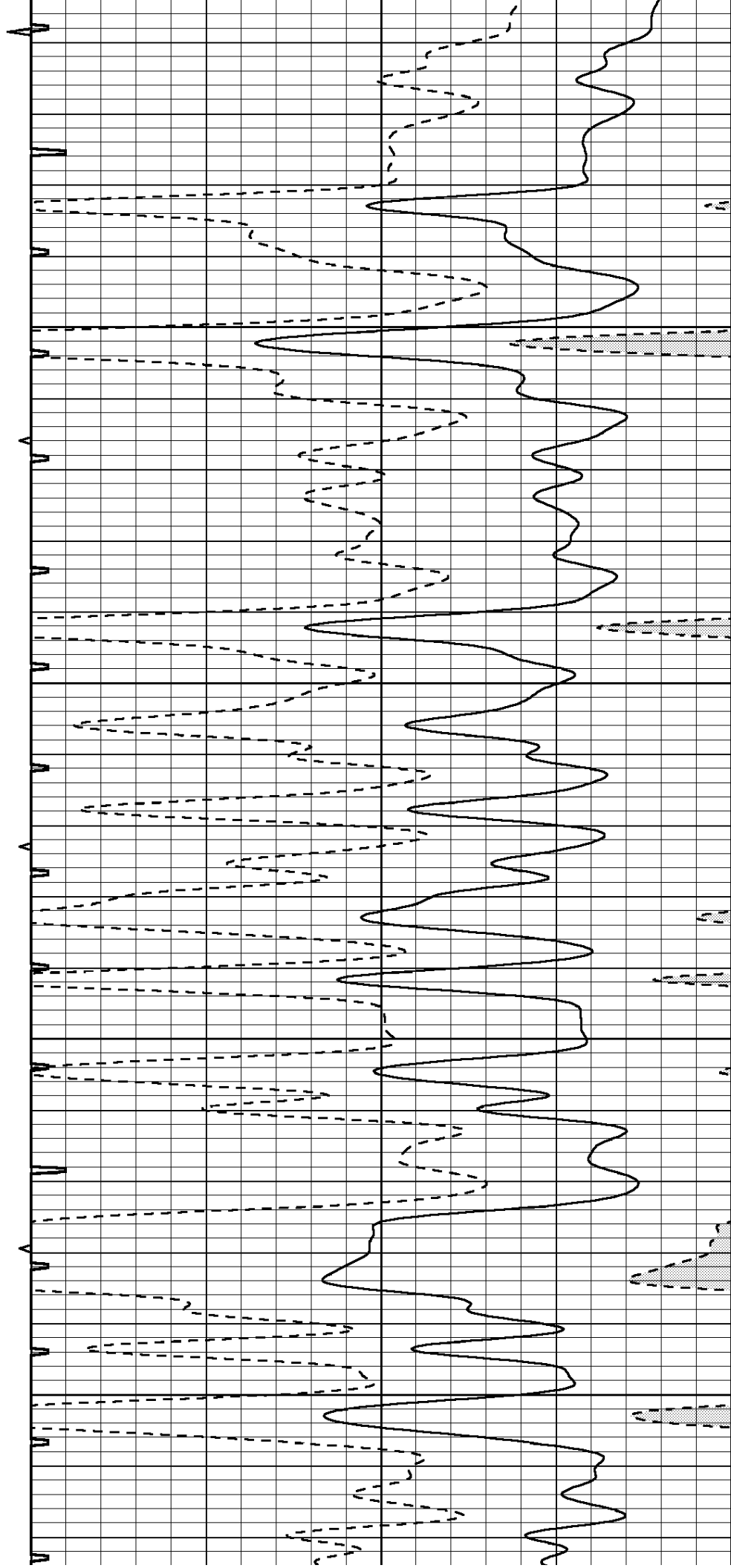


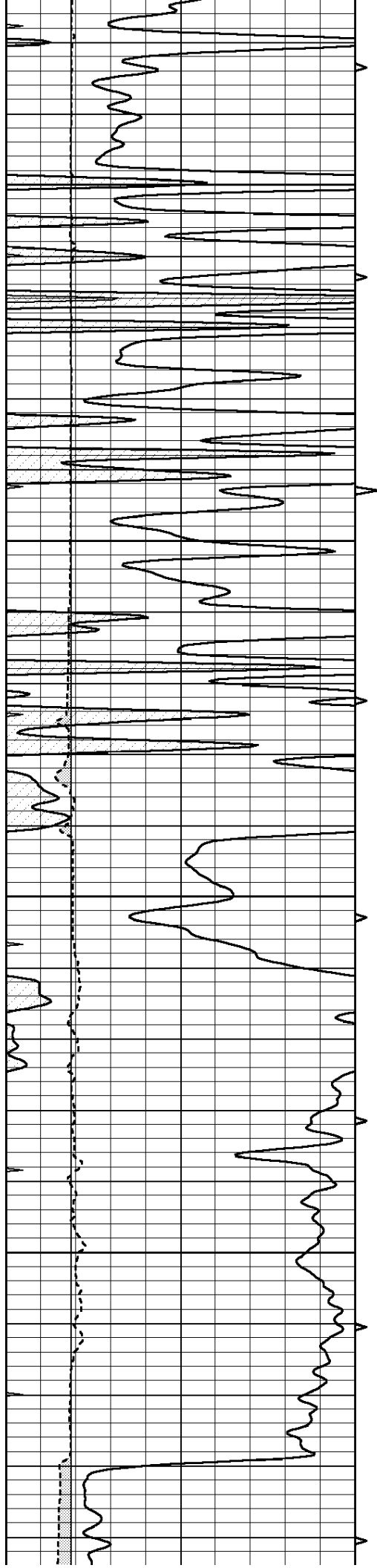
4850

4900

4950

5000



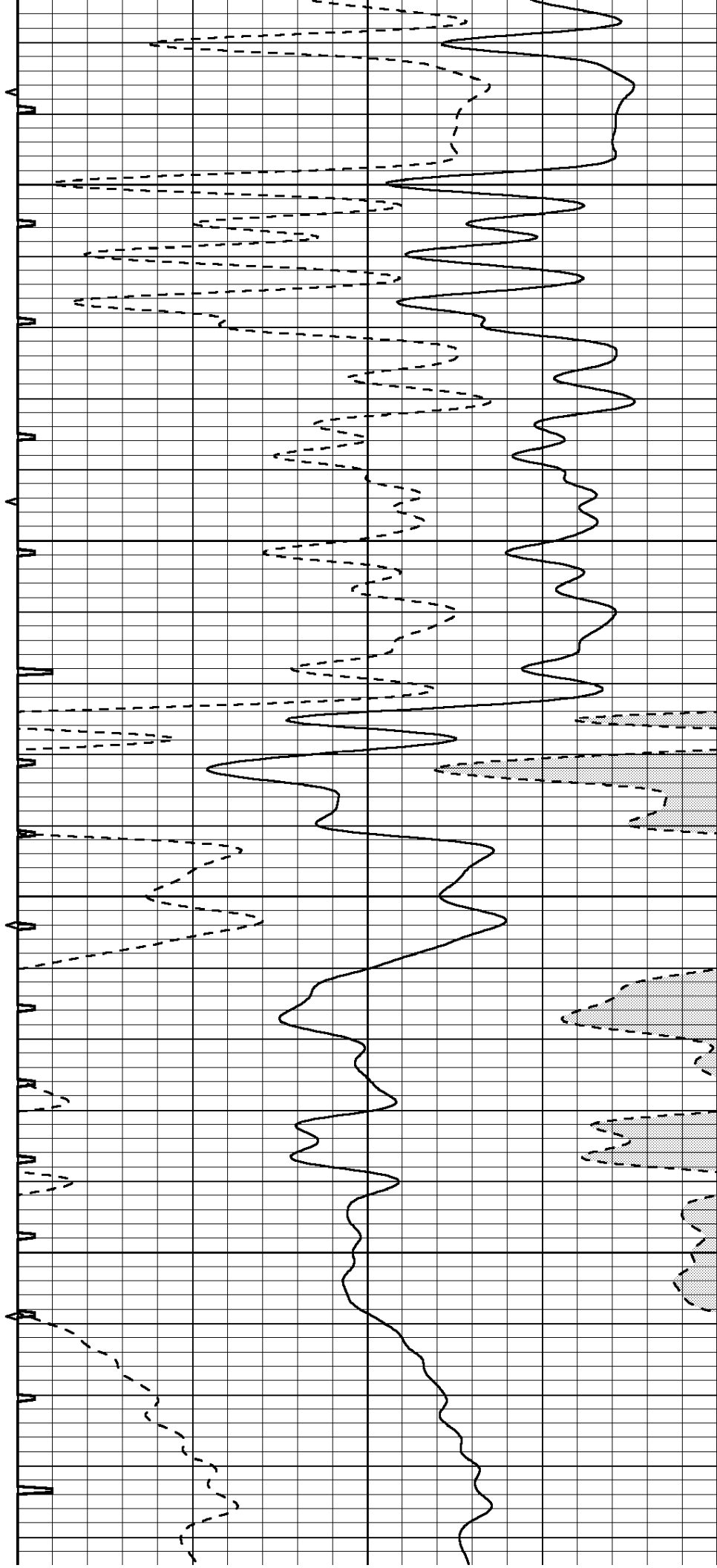


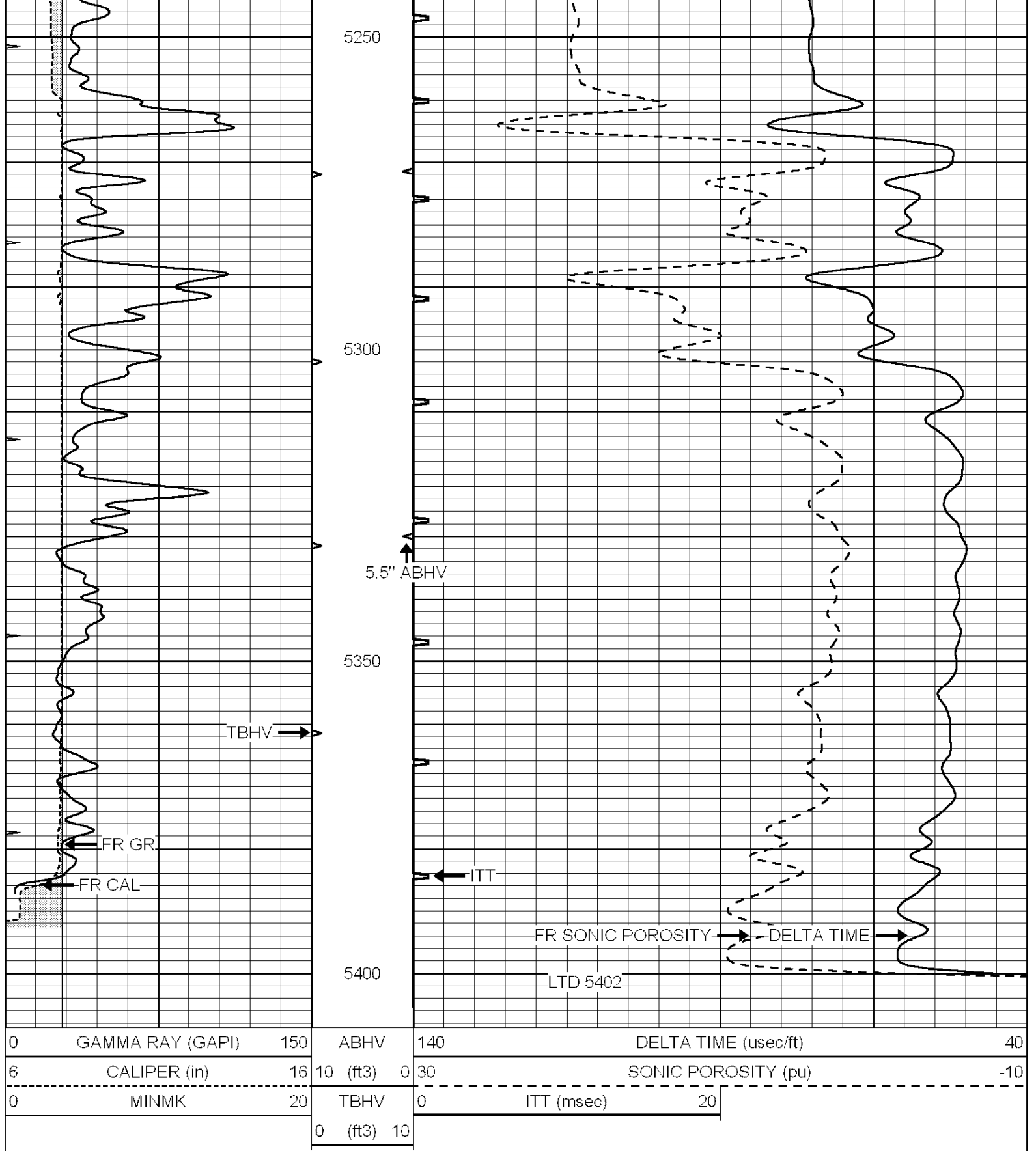
5050

5100

5150

5200





NABORS

**COMPLETION
& PRODUCTION
SERVICES CO.**

REPEAT SECTION

Database File: 25907pe.db
 Dataset Pathname: pass6.1
 Presentation Format: alt

0	GAMMA RAY (GAPI)	150	ABHV	140	DELTA TIME (usec/ft)	40
6	CALIPER (in)	16	10 (ft3)	0 30	SONIC POROSITY (pu)	-10
0	MINMK	20	TBHV	0	ITT (msec)	20
			0 (ft3)	10		

