

EXTRACTION OIL & GAS

Location: COLORADO Slot: SLOT#07 WESTWIND 7(971'FSL & 252'FWL,SEC.07)
Field: WELD COUNTY (NAD83/TRUE NORTH) Well: WESTWIND 7
Facility: SEC.07-T06N-R67W Wellbore: WESTWIND 7 PWB

Plot reference wellpath is WESTWIND 7 (REV-A.0) PWP

True vertical depths are referenced to RIG (RKB)	Grid System: NAD83 / Lambert Colorado SP, Northern Zone (501), US feet
Measured depths are referenced to RIG (RKB)	North Reference: True north
RIG (RKB) to Mean Sea Level: 4843 feet	Scale: True distance
Mean Sea Level to Mud line (At Slot: SLOT#07 WESTWIND 7(971'FSL & 252'FWL,SEC.07)): 0 feet	Depths are in feet
Coordinates are in feet referenced to Slot	Created by: painsetr on 7/18/2014

Location Information

Facility Name			Grid East (US ft)	Grid North (US ft)	Latitude	Longitude
SEC.07-T06N-R67W			3154839.470	1424332.263	40°29'48.692"N	104°56'35.682"W
Slot	Local N (ft)	Local E (ft)	Grid East (US ft)	Grid North (US ft)	Latitude	Longitude
SLOT#07 WESTWIND 7(971' FSL & 252'FWL,SEC.07)	-150.08	2.47	3154842.884	1424182.208	40°29'47.209"N	104°56'35.650"W
RIG (RKB) to Mud line (At Slot: SLOT#07 WESTWIND 7(971' FSL & 252'FWL,SEC.07))					4843ft	
Mean Sea Level to Mud line (At Slot: SLOT#07 WESTWIND 7(971' FSL & 252'FWL,SEC.07))					0ft	
RIG (RKB) to Mean Sea Level					4843ft	

Targets

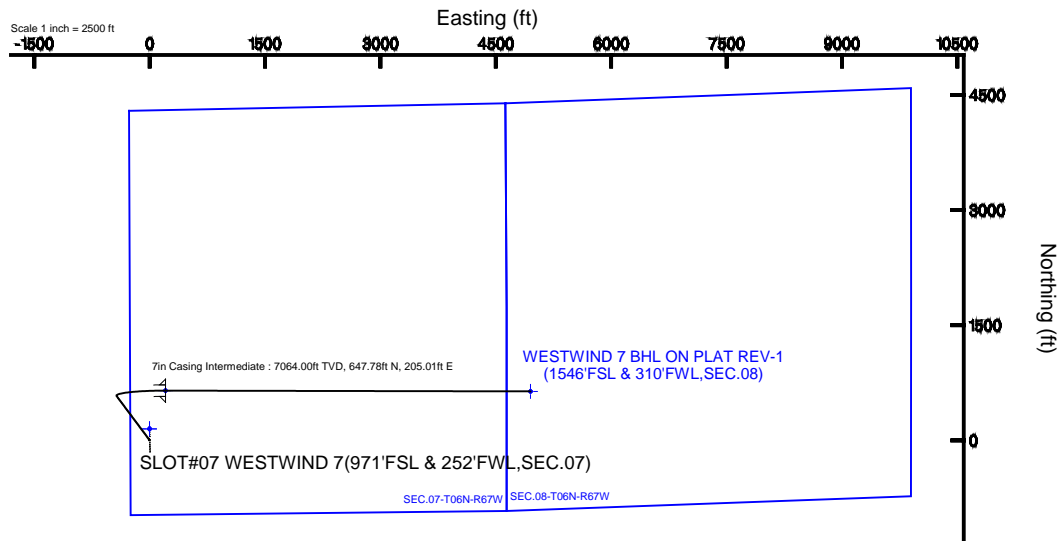
Name	MD (ft)	TVD (ft)	Local N (ft)	Local E (ft)	Grid East (US ft)	Grid North (US ft)	Latitude	Longitude
SEC.07-T06N-R67W		0.00	150.12	-2.47	3154839.47	1424332.30	40°29'48.692"N	104°56'35.682"W
SEC.08-T06N-R67W		0.00	150.12	-2.47	3154839.47	1424332.30	40°29'48.692"N	104°56'35.682"W
WESTWIND 7 BHL ON PLAT REV-1(1546'FSL & 310'FWL,SEC.08)	12224.26	7064.00	638.07	4950.79	3155789.39	1424851.33	40°29'53.509"N	104°55'31.566"W
WESTWIND 7 LANDING	7478.47	7064.00	647.78	205.00	3155043.81	1424831.24	40°29'53.610"N	104°56'32.596"W

Survey Program

Start MD (ft)	End MD (ft)	Tool	Model	Log Name/Comment	Wellbore
24.00	13000.00	NaviTrak	NaviTrak (Standard)		WESTWIND 7 PWB

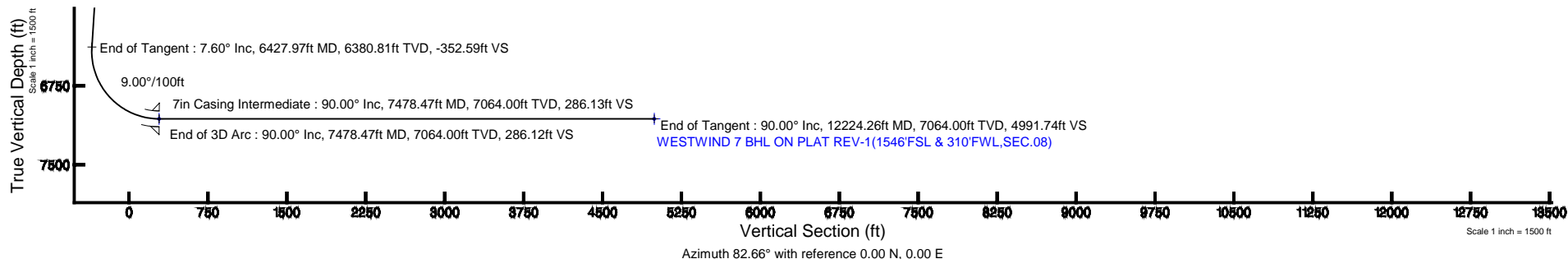
Well Profile Data

Design Comment	MD (ft)	Inc (°)	Az (°)	TVD (ft)	Local N (ft)	Local E (ft)	DLS (°/100ft)	VS (ft)
Tie On	24.00	0.000	323.281	24.00	0.00	0.00	0.00	0.00
End of Tangent	800.00	0.000	323.281	800.00	0.00	0.00	0.00	0.00
End of Build	1179.75	7.595	323.281	1178.64	20.15	-15.03	2.00	-12.33
End of Tangent	6427.97	7.595	323.281	6380.81	576.17	-429.76	0.00	-352.59
End of 3D Arc	7478.47	90.000	90.117	7064.00	647.78	205.00	9.00	286.12
End of Tangent	12224.26	90.000	90.117	7064.00	638.07	4950.79	0.00	4991.74



BGGM (1945.0 to 2016.0) Dip: 66.99° Field: 52781.3 nT
Magnetic North is 8.64 degrees East of True North (at 7/17/2014)

To correct azimuth from Magnetic to True add 8.64 degrees





Planned Wellpath Report

WESTWIND 7 (REV-A.0) PWP

Page 1 of 7



REFERENCE WELLPATH IDENTIFICATION

Operator	EXTRACTION OIL & GAS	Slot	SLOT#07 WESTWIND 7(971'FSL & 252'FWL,SEC.07)
Area	COLORADO	Well	WESTWIND 7
Field	WELD COUNTY (NAD83/TRUE NORTH)	Wellbore	WESTWIND 7 PWB
Facility	SEC.07-T06N-R67W		

REPORT SETUP INFORMATION

Projection System	NAD83 / Lambert Colorado SP, Northern Zone (501), US feet	Software System	WellArchitect® 4.0.0
North Reference	True	User	Painsetr
Scale	0.999966	Report Generated	7/18/2014 at 8:20:59 AM
Convergence at slot	n/a	Database/Source file	WA_Denver/WESTWIND_7_PWB.xml

WELLPATH LOCATION

	Local coordinates		Grid coordinates		Geographic coordinates	
	North[ft]	East[ft]	Easting[US ft]	Northing[US ft]	Latitude	Longitude
Slot Location	-150.08	2.47	3154842.88	1424182.21	40°29'47.209"N	104°56'35.650"W
Facility Reference Pt			3154839.47	1424332.26	40°29'48.692"N	104°56'35.682"W
Field Reference Pt			3185481.27	1419166.81	40°28'55.560"N	104°49'59.556"W

WELLPATH DATUM

Calculation method	Minimum curvature	RIG (RKB) to Facility Vertical Datum	4843.00ft
Horizontal Reference Pt	Slot	RIG (RKB) to Mean Sea Level	4843.00ft
Vertical Reference Pt	RIG (RKB)	RIG (RKB) to Mud Line at Slot (SLOT#07 WESTWIND 7(971'FSL & 252'FWL,SEC.07))	4843.00ft
MD Reference Pt	RIG (RKB)	Section Origin	N 0.00, E 0.00 ft
Field Vertical Reference	Mean Sea Level	Section Azimuth	82.66°



Planned Wellpath Report

WESTWIND 7 (REV-A.0) PWP

Page 2 of 7



REFERENCE WELLPATH IDENTIFICATION

Operator	EXTRACTION OIL & GAS	Slot	SLOT#07 WESTWIND 7(971'FSL & 252'FWL,SEC.07)
Area	COLORADO	Well	WESTWIND 7
Field	WELD COUNTY (NAD83/TRUE NORTH)	Wellbore	WESTWIND 7 PWB
Facility	SEC.07-T06N-R67W		

WELLPATH DATA (129 stations) † = interpolated/extrapolated station

MD [ft]	Inclination [°]	Azimuth [°]	TVD [ft]	Vert Sect [ft]	North [ft]	East [ft]	DLS [°/100ft]	Comments
0.00†	0.000	323.281	0.00	0.00	0.00	0.00	0.00	
24.00	0.000	323.281	24.00	0.00	0.00	0.00	0.00	Tie On
124.00†	0.000	323.281	124.00	0.00	0.00	0.00	0.00	
224.00†	0.000	323.281	224.00	0.00	0.00	0.00	0.00	
324.00†	0.000	323.281	324.00	0.00	0.00	0.00	0.00	
424.00†	0.000	323.281	424.00	0.00	0.00	0.00	0.00	
524.00†	0.000	323.281	524.00	0.00	0.00	0.00	0.00	
624.00†	0.000	323.281	624.00	0.00	0.00	0.00	0.00	
724.00†	0.000	323.281	724.00	0.00	0.00	0.00	0.00	
800.00	0.000	323.281	800.00	0.00	0.00	0.00	0.00	End of Tangent
824.00†	0.480	323.281	824.00	-0.05	0.08	-0.06	2.00	
924.00†	2.480	323.281	923.96	-1.32	2.15	-1.60	2.00	
1024.00†	4.480	323.281	1023.77	-4.29	7.02	-5.23	2.00	
1124.00†	6.480	323.281	1123.31	-8.98	14.67	-10.94	2.00	
1179.75	7.595	323.281	1178.64	-12.33	20.15	-15.03	2.00	End of Build
1224.00†	7.595	323.281	1222.50	-15.20	24.83	-18.52	0.00	
1324.00†	7.595	323.281	1321.62	-21.68	35.43	-26.43	0.00	
1424.00†	7.595	323.281	1420.75	-28.16	46.02	-34.33	0.00	
1524.00†	7.595	323.281	1519.87	-34.65	56.62	-42.23	0.00	
1624.00†	7.595	323.281	1618.99	-41.13	67.21	-50.13	0.00	
1724.00†	7.595	323.281	1718.11	-47.61	77.81	-58.04	0.00	
1824.00†	7.595	323.281	1817.24	-54.10	88.40	-65.94	0.00	
1924.00†	7.595	323.281	1916.36	-60.58	99.00	-73.84	0.00	
2024.00†	7.595	323.281	2015.48	-67.06	109.59	-81.74	0.00	
2124.00†	7.595	323.281	2114.60	-73.55	120.18	-89.65	0.00	
2224.00†	7.595	323.281	2213.73	-80.03	130.78	-97.55	0.00	
2324.00†	7.595	323.281	2312.85	-86.51	141.37	-105.45	0.00	
2424.00†	7.595	323.281	2411.97	-93.00	151.97	-113.35	0.00	
2524.00†	7.595	323.281	2511.10	-99.48	162.56	-121.25	0.00	
2624.00†	7.595	323.281	2610.22	-105.96	173.16	-129.16	0.00	



Planned Wellpath Report

WESTWIND 7 (REV-A.0) PWP

Page 3 of 7



REFERENCE WELLPATH IDENTIFICATION

Operator	EXTRACTION OIL & GAS	Slot	SLOT#07 WESTWIND 7(971'FSL & 252'FWL,SEC.07)
Area	COLORADO	Well	WESTWIND 7
Field	WELD COUNTY (NAD83/TRUE NORTH)	Wellbore	WESTWIND 7 PWB
Facility	SEC.07-T06N-R67W		

WELLPATH DATA (129 stations) † = interpolated/extrapolated station

MD [ft]	Inclination [°]	Azimuth [°]	TVD [ft]	Vert Sect [ft]	North [ft]	East [ft]	DLS [°/100ft]	Comments
2724.00†	7.595	323.281	2709.34	-112.45	183.75	-137.06	0.00	
2824.00†	7.595	323.281	2808.46	-118.93	194.35	-144.96	0.00	
2924.00†	7.595	323.281	2907.59	-125.41	204.94	-152.86	0.00	
3024.00†	7.595	323.281	3006.71	-131.90	215.53	-160.77	0.00	
3124.00†	7.595	323.281	3105.83	-138.38	226.13	-168.67	0.00	
3224.00†	7.595	323.281	3204.95	-144.86	236.72	-176.57	0.00	
3324.00†	7.595	323.281	3304.08	-151.35	247.32	-184.47	0.00	
3424.00†	7.595	323.281	3403.20	-157.83	257.91	-192.38	0.00	
3524.00†	7.595	323.281	3502.32	-164.31	268.51	-200.28	0.00	
3624.00†	7.595	323.281	3601.45	-170.80	279.10	-208.18	0.00	
3724.00†	7.595	323.281	3700.57	-177.28	289.70	-216.08	0.00	
3824.00†	7.595	323.281	3799.69	-183.76	300.29	-223.99	0.00	
3924.00†	7.595	323.281	3898.81	-190.25	310.89	-231.89	0.00	
4024.00†	7.595	323.281	3997.94	-196.73	321.48	-239.79	0.00	
4124.00†	7.595	323.281	4097.06	-203.21	332.07	-247.69	0.00	
4224.00†	7.595	323.281	4196.18	-209.70	342.67	-255.60	0.00	
4324.00†	7.595	323.281	4295.30	-216.18	353.26	-263.50	0.00	
4424.00†	7.595	323.281	4394.43	-222.66	363.86	-271.40	0.00	
4524.00†	7.595	323.281	4493.55	-229.15	374.45	-279.30	0.00	
4624.00†	7.595	323.281	4592.67	-235.63	385.05	-287.21	0.00	
4724.00†	7.595	323.281	4691.79	-242.11	395.64	-295.11	0.00	
4824.00†	7.595	323.281	4790.92	-248.60	406.24	-303.01	0.00	
4924.00†	7.595	323.281	4890.04	-255.08	416.83	-310.91	0.00	
5024.00†	7.595	323.281	4989.16	-261.56	427.42	-318.82	0.00	
5124.00†	7.595	323.281	5088.29	-268.05	438.02	-326.72	0.00	
5224.00†	7.595	323.281	5187.41	-274.53	448.61	-334.62	0.00	
5324.00†	7.595	323.281	5286.53	-281.01	459.21	-342.52	0.00	
5424.00†	7.595	323.281	5385.65	-287.50	469.80	-350.42	0.00	
5524.00†	7.595	323.281	5484.78	-293.98	480.40	-358.33	0.00	
5624.00†	7.595	323.281	5583.90	-300.46	490.99	-366.23	0.00	



Planned Wellpath Report

WESTWIND 7 (REV-A.0) PWP

Page 4 of 7



REFERENCE WELLPATH IDENTIFICATION

Operator	EXTRACTION OIL & GAS	Slot	SLOT#07 WESTWIND 7(971'FSL & 252'FWL,SEC.07)
Area	COLORADO	Well	WESTWIND 7
Field	WELD COUNTY (NAD83/TRUE NORTH)	Wellbore	WESTWIND 7 PWB
Facility	SEC.07-T06N-R67W		

WELLPATH DATA (129 stations) † = interpolated/extrapolated station

MD [ft]	Inclination [°]	Azimuth [°]	TVD [ft]	Vert Sect [ft]	North [ft]	East [ft]	DLS [°/100ft]	Comments
5724.00†	7.595	323.281	5683.02	-306.95	501.59	-374.13	0.00	
5824.00†	7.595	323.281	5782.14	-313.43	512.18	-382.03	0.00	
5924.00†	7.595	323.281	5881.27	-319.91	522.77	-389.94	0.00	
6024.00†	7.595	323.281	5980.39	-326.40	533.37	-397.84	0.00	
6124.00†	7.595	323.281	6079.51	-332.88	543.96	-405.74	0.00	
6224.00†	7.595	323.281	6178.64	-339.36	554.56	-413.64	0.00	
6324.00†	7.595	323.281	6277.76	-345.85	565.15	-421.55	0.00	
6424.00†	7.595	323.281	6376.88	-352.33	575.75	-429.45	0.00	
6427.97	7.595	323.281	6380.81	-352.59	576.17	-429.76	0.00	End of Tangent
6524.00†	7.337	34.143	6476.21	-351.64	586.35	-430.12	9.00	
6624.00†	14.423	65.600	6574.43	-335.47	596.80	-415.16	9.00	
6724.00†	22.882	75.470	6669.11	-304.21	606.84	-384.94	9.00	
6824.00†	31.630	80.139	6757.93	-258.63	616.23	-340.19	9.00	
6924.00†	40.481	82.934	6838.70	-199.85	624.73	-282.02	9.00	
7024.00†	49.378	84.865	6909.43	-129.33	632.14	-211.87	9.00	
7124.00†	58.299	86.338	6968.38	-48.79	638.26	-131.45	9.00	
7224.00†	67.235	87.550	7014.10	39.79	642.96	-42.75	9.00	
7324.00†	76.178	88.613	7045.46	134.21	646.11	52.04	9.00	
7424.00†	85.126	89.596	7061.68	232.15	647.64	150.60	9.00	
7478.47	90.000	90.117	7064.00 [†]	286.12	647.78	205.00	9.00	End of 3D Arc
7524.00†	90.000	90.117	7064.00	331.27	647.69	250.54	0.00	
7624.00†	90.000	90.117	7064.00	430.43	647.48	350.54	0.00	
7724.00†	90.000	90.117	7064.00	529.58	647.28	450.54	0.00	
7824.00†	90.000	90.117	7064.00	628.73	647.07	550.54	0.00	
7924.00†	90.000	90.117	7064.00	727.89	646.87	650.54	0.00	
8024.00†	90.000	90.117	7064.00	827.04	646.66	750.54	0.00	
8124.00†	90.000	90.117	7064.00	926.19	646.46	850.54	0.00	
8224.00†	90.000	90.117	7064.00	1025.35	646.25	950.53	0.00	
8324.00†	90.000	90.117	7064.00	1124.50	646.05	1050.53	0.00	
8424.00†	90.000	90.117	7064.00	1223.65	645.85	1150.53	0.00	



Planned Wellpath Report

WESTWIND 7 (REV-A.0) PWP

Page 5 of 7



REFERENCE WELLPATH IDENTIFICATION

Operator	EXTRACTION OIL & GAS	Slot	SLOT#07 WESTWIND 7(971'FSL & 252'FWL,SEC.07)
Area	COLORADO	Well	WESTWIND 7
Field	WELD COUNTY (NAD83/TRUE NORTH)	Wellbore	WESTWIND 7 PWB
Facility	SEC.07-T06N-R67W		

WELLPATH DATA (129 stations) † = interpolated/extrapolated station

MD [ft]	Inclination [°]	Azimuth [°]	TVD [ft]	Vert Sect [ft]	North [ft]	East [ft]	DLS [°/100ft]	Comments
8524.00†	90.000	90.117	7064.00	1322.81	645.64	1250.53	0.00	
8624.00†	90.000	90.117	7064.00	1421.96	645.44	1350.53	0.00	
8724.00†	90.000	90.117	7064.00	1521.11	645.23	1450.53	0.00	
8824.00†	90.000	90.117	7064.00	1620.27	645.03	1550.53	0.00	
8924.00†	90.000	90.117	7064.00	1719.42	644.82	1650.53	0.00	
9024.00†	90.000	90.117	7064.00	1818.57	644.62	1750.53	0.00	
9124.00†	90.000	90.117	7064.00	1917.73	644.41	1850.53	0.00	
9224.00†	90.000	90.117	7064.00	2016.88	644.21	1950.53	0.00	
9324.00†	90.000	90.117	7064.00	2116.03	644.00	2050.53	0.00	
9424.00†	90.000	90.117	7064.00	2215.19	643.80	2150.53	0.00	
9524.00†	90.000	90.117	7064.00	2314.34	643.60	2250.53	0.00	
9624.00†	90.000	90.117	7064.00	2413.49	643.39	2350.53	0.00	
9724.00†	90.000	90.117	7064.00	2512.65	643.19	2450.53	0.00	
9824.00†	90.000	90.117	7064.00	2611.80	642.98	2550.53	0.00	
9924.00†	90.000	90.117	7064.00	2710.95	642.78	2650.53	0.00	
10024.00†	90.000	90.117	7064.00	2810.10	642.57	2750.53	0.00	
10124.00†	90.000	90.117	7064.00	2909.26	642.37	2850.53	0.00	
10224.00†	90.000	90.117	7064.00	3008.41	642.16	2950.53	0.00	
10324.00†	90.000	90.117	7064.00	3107.56	641.96	3050.53	0.00	
10424.00†	90.000	90.117	7064.00	3206.72	641.76	3150.53	0.00	
10524.00†	90.000	90.117	7064.00	3305.87	641.55	3250.53	0.00	
10624.00†	90.000	90.117	7064.00	3405.02	641.35	3350.53	0.00	
10724.00†	90.000	90.117	7064.00	3504.18	641.14	3450.53	0.00	
10824.00†	90.000	90.117	7064.00	3603.33	640.94	3550.53	0.00	
10924.00†	90.000	90.117	7064.00	3702.48	640.73	3650.53	0.00	
11024.00†	90.000	90.117	7064.00	3801.64	640.53	3750.53	0.00	
11124.00†	90.000	90.117	7064.00	3900.79	640.32	3850.53	0.00	
11224.00†	90.000	90.117	7064.00	3999.94	640.12	3950.53	0.00	
11324.00†	90.000	90.117	7064.00	4099.10	639.92	4050.53	0.00	
11424.00†	90.000	90.117	7064.00	4198.25	639.71	4150.53	0.00	



Planned Wellpath Report

WESTWIND 7 (REV-A.0) PWP

Page 6 of 7



REFERENCE WELLPATH IDENTIFICATION

Operator	EXTRACTION OIL & GAS	Slot	SLOT#07 WESTWIND 7(971'FSL & 252'FWL,SEC.07)
Area	COLORADO	Well	WESTWIND 7
Field	WELD COUNTY (NAD83/TRUE NORTH)	Wellbore	WESTWIND 7 PWB
Facility	SEC.07-T06N-R67W		

WELLPATH DATA (129 stations) † = interpolated/extrapolated station

MD [ft]	Inclination [°]	Azimuth [°]	TVD [ft]	Vert Sect [ft]	North [ft]	East [ft]	DLS [°/100ft]	Comments
11524.00†	90.000	90.117	7064.00	4297.40	639.51	4250.53	0.00	
11624.00†	90.000	90.117	7064.00	4396.56	639.30	4350.53	0.00	
11724.00†	90.000	90.117	7064.00	4495.71	639.10	4450.53	0.00	
11824.00†	90.000	90.117	7064.00	4594.86	638.89	4550.53	0.00	
11924.00†	90.000	90.117	7064.00	4694.02	638.69	4650.53	0.00	
12024.00†	90.000	90.117	7064.00	4793.17	638.48	4750.53	0.00	
12124.00†	90.000	90.117	7064.00	4892.32	638.28	4850.53	0.00	
12224.00†	90.000	90.117	7064.00	4991.48	638.07	4950.53	0.00	
12224.26	90.000	90.117	7064.00 ²	4991.74	638.07	4950.79	0.00	End of Tangent

HOLE & CASING SECTIONS - Ref Wellbore: WESTWIND 7 PWB Ref Wellpath: WESTWIND 7 (REV-A.0) PWP

String/Diameter	Start MD [ft]	End MD [ft]	Interval [ft]	Start TVD [ft]	End TVD [ft]	Start N/S [ft]	Start E/W [ft]	End N/S [ft]	End E/W [ft]
7in Casing Intermediate	24.00	7478.47	7454.47	24.00	7064.00	0.00	0.00	647.78	205.01



Planned Wellpath Report

WESTWIND 7 (REV-A.0) PWP

Page 7 of 7



REFERENCE WELLPATH IDENTIFICATION

Operator	EXTRACTION OIL & GAS	Slot	SLOT#07 WESTWIND 7(971'FSL & 252'FWL,SEC.07)
Area	COLORADO	Well	WESTWIND 7
Field	WELD COUNTY (NAD83/TRUE NORTH)	Wellbore	WESTWIND 7 PWB
Facility	SEC.07-T06N-R67W		

TARGETS

Name	MD [ft]	TVD [ft]	North [ft]	East [ft]	Grid East [US ft]	Grid North [US ft]	Latitude	Longitude	Shape
SEC.07-T06N-R67W		0.00	150.12	-2.47	3154839.47	1424332.30	40°29'48.692"N	104°56'35.682"W	polygon
SEC.08-T06N-R67W		0.00	150.12	-2.47	3154839.47	1424332.30	40°29'48.692"N	104°56'35.682"W	polygon
2) WESTWIND 7 BHL ON PLAT REV-1(1546'FSL & 310'FWL,SEC.08)	12224.26	7064.00	638.07	4950.79	3159789.39	1424851.33	40°29'53.509"N	104°55'31.566"W	point
1) WESTWIND 7 LANDING	7478.47	7064.00	647.78	205.00	3155043.81	1424831.24	40°29'53.610"N	104°56'32.996"W	point

SURVEY PROGRAM - Ref Wellbore: WESTWIND 7 PWB Ref Wellpath: WESTWIND 7 (REV-A.0) PWP

Start MD [ft]	End MD [ft]	Positional Uncertainty Model	Log Name/Comment	Wellbore
24.00	13000.00	NaviTrak (Standard)		WESTWIND 7 PWB