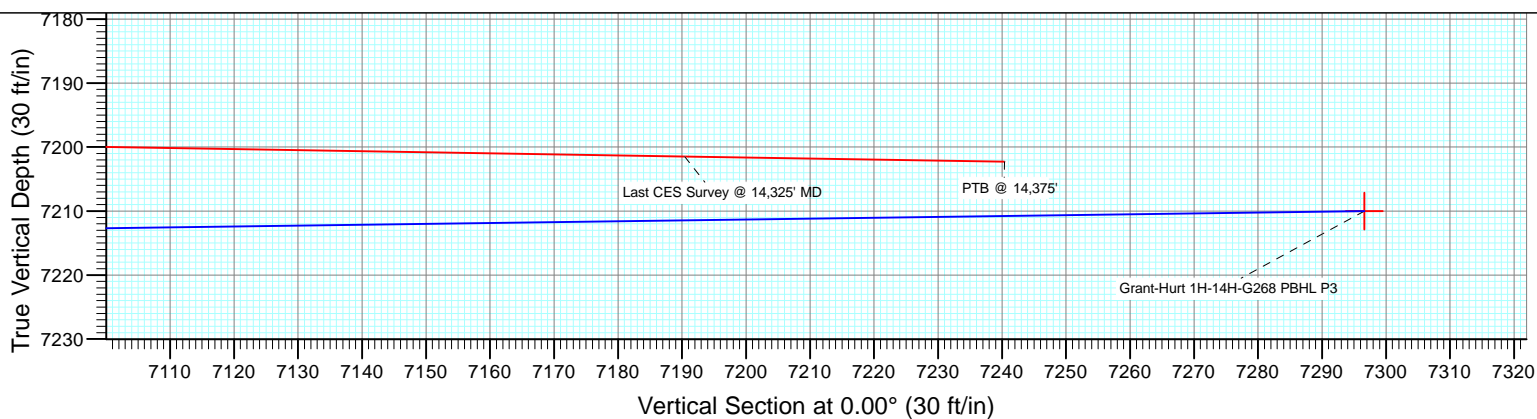
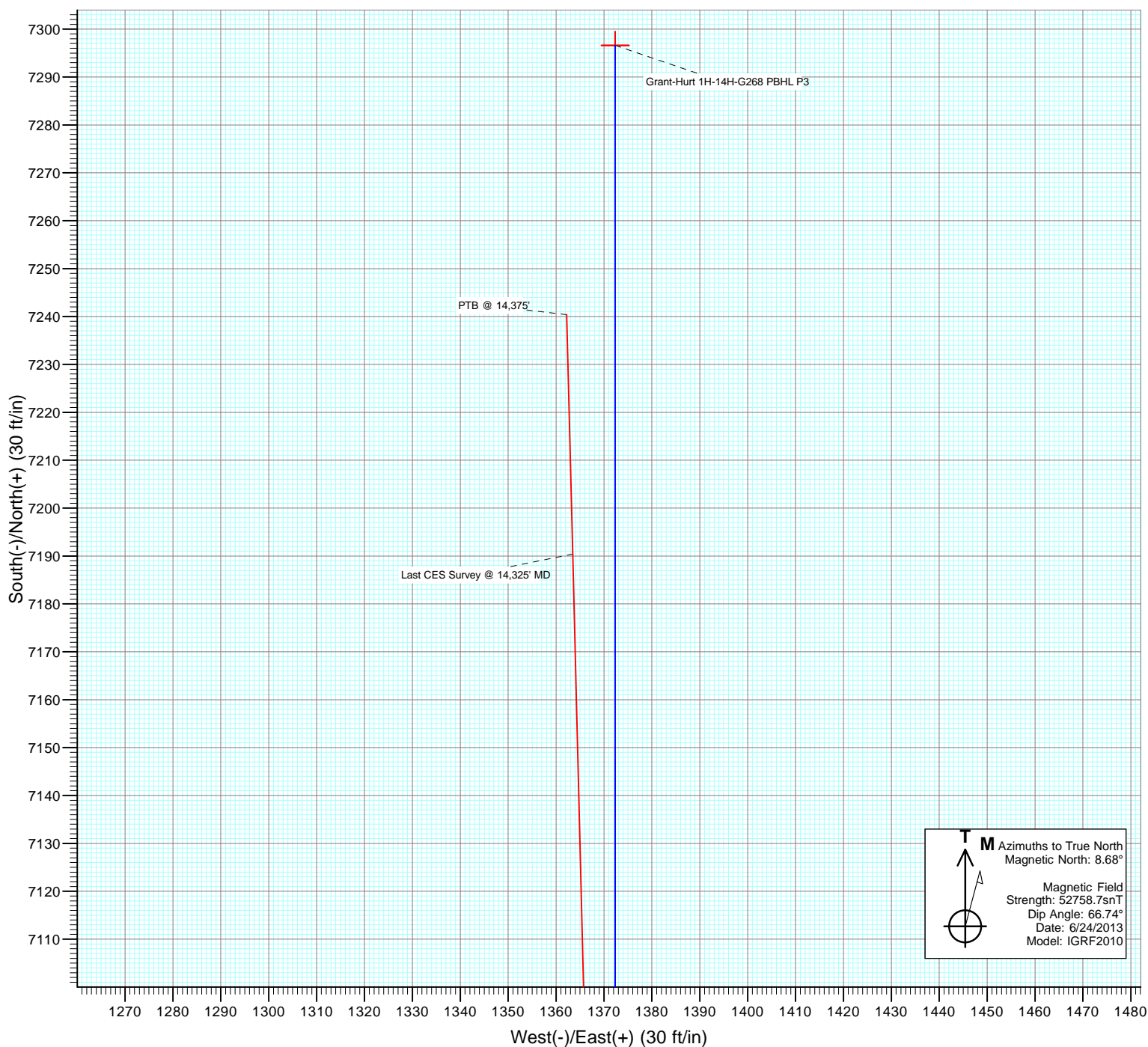




Project: DJ Wattenberg
Site: S14-T2N-R68W (Grant Elmquist/Salisbury/Hurt)
Well: Grant-Hurt 1H-14H-G268
Wellbore: Hz
Design: FINAL



Survey Report

Company:	EnCana Oil & Gas (USA) Inc	Local Co-ordinate Reference:	Well Grant-Hurt 1H-14H-G268
Project:	DJ Wattenberg	TVD Reference:	32' KB @ 4920.0ft (Patt 326)
Site:	S14-T2N-R68W (Grant Elmquist/Salisbury/Hurt)	MD Reference:	32' KB @ 4920.0ft (Patt 326)
Well:	Grant-Hurt 1H-14H-G268	North Reference:	True
Wellbore:	Hz	Survey Calculation Method:	Minimum Curvature
Design:	FINAL	Database:	USA EDM 5000 Multi Users DB

Project	DJ Wattenberg		
Map System:	US State Plane 1983	System Datum:	Mean Sea Level
Geo Datum:	North American Datum 1983		
Map Zone:	Colorado Northern Zone		

Site		S14-T2N-R68W (Grant Elmquist/Salisbury/Hurt)			
Site Position:		Northing:	1,295,686.81 ft	Latitude:	40.143850
From:	Lat/Long	Easting:	3,147,060.98 ft	Longitude:	-104.973980
Position Uncertainty:	0.0 ft	Slot Radius:	13.200 in	Grid Convergence:	0.34 °

Well	Grant-Hurt 1H-14H-G268					
Well Position	+N/-S	0.0 ft	Northing:	1,294,034.58 ft	Latitude:	40.139280
	+E/-W	0.0 ft	Easting:	3,149,167.68 ft	Longitude:	-104.966480
Position Uncertainty		0.0 ft	Wellhead Elevation:	ft	Ground Level:	4,888.0 ft

Wellbore	Hz				
Magnetics	Model Name	Sample Date	Declination (°)	Dip Angle (°)	Field Strength (nT)
	IGRF2010	6/24/2013	8.68	66.74	52,759

Design	FINAL				
Audit Notes:					
Version:	1.0	Phase:	ACTUAL	Tie On Depth:	0.0
Vertical Section:	Depth From (TVD)	+N/-S	+E/-W	Direction	
	(ft)	(ft)	(ft)	(°)	
	0.0	0.0	0.0	0.00	

Survey Program	Date	10/2/2014			
From (ft)	To (ft)	Survey (Wellbore)	Tool Name	Description	
146.0	14,375.0	Survey #1 (Hz)	Geolink MWD	Geolink MWD	

Survey										
Measured Depth (ft)	Inclination (°)	Azimuth (°)	Vertical Depth (ft)	+N/-S (ft)	+E/-W (ft)	Vertical Section (ft)	Dogleg Rate (°/100ft)	Build Rate (°/100ft)	Formations / Comments	
0.0	0.00	0.00	0.0	0.0	0.0	0.0	0.00	0.00		
146.0	0.40	221.00	146.0	-0.4	-0.3	-0.4	0.27	0.27		
241.0	1.00	133.90	241.0	-1.2	0.0	-1.2	1.11	0.63		
335.0	1.70	128.10	335.0	-2.6	1.7	-2.6	0.76	0.74		
430.0	2.30	104.40	429.9	-4.0	4.7	-4.0	1.06	0.63		
525.0	3.40	95.10	524.8	-4.7	9.3	-4.7	1.25	1.16		
620.0	4.70	89.50	619.6	-4.9	16.0	-4.9	1.43	1.37		
714.0	5.10	94.10	713.2	-5.2	24.1	-5.2	0.60	0.43		
809.0	5.30	97.70	807.8	-6.1	32.6	-6.1	0.40	0.21		
835.0	5.20	97.90	833.7	-6.4	35.0	-6.4	0.39	-0.38		
895.0	5.40	107.40	893.5	-7.6	40.4	-7.6	1.50	0.33		
989.0	7.30	108.10	986.9	-10.8	50.3	-10.8	2.02	2.02		
1,083.0	9.50	103.10	1,079.9	-14.4	63.5	-14.4	2.46	2.34		

Survey Report

Company:	EnCana Oil & Gas (USA) Inc	Local Co-ordinate Reference:	Well Grant-Hurt 1H-14H-G268
Project:	DJ Wattenberg	TVD Reference:	32' KB @ 4920.0ft (Patt 326)
Site:	S14-T2N-R68W (Grant Elmquist/Salisbury/Hurt)	MD Reference:	32' KB @ 4920.0ft (Patt 326)
Well:	Grant-Hurt 1H-14H-G268	North Reference:	True
Wellbore:	Hz	Survey Calculation Method:	Minimum Curvature
Design:	FINAL	Database:	USA EDM 5000 Multi Users DB

Survey

Measured Depth (ft)	Inclination (°)	Azimuth (°)	Vertical Depth (ft)	+N/-S (ft)	+E/-W (ft)	Vertical Section (ft)	Dogleg Rate (°/100ft)	Build Rate (°/100ft)	Formations / Comments
1,178.0	11.00	97.50	1,173.3	-17.4	80.1	-17.4	1.89	1.58	
1,273.0	10.90	97.50	1,266.6	-19.7	98.0	-19.7	0.11	-0.11	
1,367.0	12.90	94.60	1,358.6	-21.7	117.3	-21.7	2.22	2.13	
1,462.0	13.00	91.60	1,451.2	-22.9	138.5	-22.9	0.72	0.11	
1,554.0	12.80	88.40	1,540.9	-22.9	159.1	-22.9	0.81	-0.22	
1,645.0	12.00	97.10	1,629.7	-23.8	178.5	-23.8	2.23	-0.88	
1,737.0	12.00	96.60	1,719.7	-26.1	197.5	-26.1	0.11	0.00	
1,829.0	11.80	96.00	1,809.8	-28.1	216.4	-28.1	0.26	-0.22	
1,922.0	11.50	95.30	1,900.8	-30.0	235.1	-30.0	0.36	-0.32	
2,014.0	11.40	92.80	1,991.0	-31.3	253.3	-31.3	0.55	-0.11	
2,106.0	11.40	93.30	2,081.2	-32.2	271.4	-32.2	0.11	0.00	
2,198.0	10.70	103.80	2,171.5	-34.8	288.8	-34.8	2.31	-0.76	
2,290.0	10.20	101.80	2,262.0	-38.5	305.1	-38.5	0.67	-0.54	
2,382.0	10.00	101.20	2,352.5	-41.7	320.9	-41.7	0.25	-0.22	
2,474.0	11.40	100.40	2,442.9	-44.9	337.7	-44.9	1.53	1.52	
2,566.0	11.00	100.50	2,533.2	-48.2	355.2	-48.2	0.44	-0.43	
2,658.0	12.70	102.60	2,623.2	-52.0	373.7	-52.0	1.91	1.85	
2,750.0	11.80	101.90	2,713.1	-56.1	392.8	-56.1	0.99	-0.98	
2,842.0	11.50	101.70	2,803.2	-59.9	411.0	-59.9	0.33	-0.33	
2,936.0	13.50	97.00	2,895.0	-63.1	431.1	-63.1	2.39	2.13	
3,031.0	13.10	97.50	2,987.5	-65.9	452.7	-65.9	0.44	-0.42	
3,125.0	12.10	96.70	3,079.2	-68.4	473.1	-68.4	1.08	-1.06	
3,219.0	11.50	93.90	3,171.2	-70.2	492.2	-70.2	0.88	-0.64	
3,313.0	12.10	98.90	3,263.2	-72.4	511.3	-72.4	1.26	0.64	
3,407.0	11.30	99.30	3,355.3	-75.4	530.1	-75.4	0.86	-0.85	
3,500.0	12.50	98.50	3,446.3	-78.4	549.1	-78.4	1.30	1.29	
3,594.0	11.60	99.20	3,538.2	-81.4	568.5	-81.4	0.97	-0.96	
3,689.0	13.60	96.70	3,630.9	-84.2	589.0	-84.2	2.18	2.11	
3,782.0	13.10	97.40	3,721.4	-86.8	610.3	-86.8	0.57	-0.54	
3,877.0	12.40	99.20	3,814.0	-89.9	631.1	-89.9	0.85	-0.74	
3,970.0	11.90	98.10	3,905.0	-92.8	650.4	-92.8	0.59	-0.54	
4,064.0	13.60	95.20	3,996.6	-95.2	671.0	-95.2	1.93	1.81	
4,158.0	13.10	96.40	4,088.1	-97.4	692.6	-97.4	0.61	-0.53	
4,252.0	12.00	96.50	4,179.9	-99.7	712.9	-99.7	1.17	-1.17	
4,346.0	11.60	95.20	4,271.9	-101.6	732.0	-101.6	0.51	-0.43	
4,440.0	12.40	91.00	4,363.8	-102.7	751.5	-102.7	1.26	0.85	
4,534.0	11.80	91.20	4,455.7	-103.0	771.2	-103.0	0.64	-0.64	
4,628.0	13.20	96.20	4,547.5	-104.4	791.5	-104.4	1.88	1.49	
4,723.0	12.40	96.40	4,640.1	-106.7	812.4	-106.7	0.84	-0.84	
4,817.0	11.90	94.60	4,732.0	-108.6	832.1	-108.6	0.67	-0.53	
4,912.0	11.20	95.10	4,825.1	-110.2	851.1	-110.2	0.74	-0.74	
5,006.0	11.40	101.80	4,917.3	-112.9	869.2	-112.9	1.41	0.21	
5,101.0	10.50	101.10	5,010.6	-116.5	886.9	-116.5	0.96	-0.95	
5,195.0	12.70	98.20	5,102.6	-119.6	905.6	-119.6	2.42	2.34	
5,289.0	11.40	98.60	5,194.6	-122.5	925.0	-122.5	1.39	-1.38	
5,384.0	10.80	97.00	5,287.8	-125.0	943.1	-125.0	0.71	-0.63	
5,479.0	12.10	98.20	5,380.9	-127.5	961.8	-127.5	1.39	1.37	
5,574.0	10.80	96.80	5,474.0	-130.0	980.5	-130.0	1.40	-1.37	
5,669.0	12.00	101.80	5,567.1	-133.0	999.0	-133.0	1.64	1.26	
5,764.0	11.00	100.70	5,660.2	-136.7	1,017.6	-136.7	1.08	-1.05	
5,859.0	11.00	103.30	5,753.5	-140.5	1,035.3	-140.5	0.52	0.00	
5,954.0	12.40	103.10	5,846.5	-144.9	1,054.0	-144.9	1.47	1.47	
6,049.0	11.20	100.80	5,939.5	-148.9	1,073.0	-148.9	1.36	-1.26	

Survey Report

Company:	EnCana Oil & Gas (USA) Inc	Local Co-ordinate Reference:	Well Grant-Hurt 1H-14H-G268
Project:	DJ Wattenberg	TVD Reference:	32' KB @ 4920.0ft (Patt 326)
Site:	S14-T2N-R68W (Grant Elmquist/Salisbury/Hurt)	MD Reference:	32' KB @ 4920.0ft (Patt 326)
Well:	Grant-Hurt 1H-14H-G268	North Reference:	True
Wellbore:	Hz	Survey Calculation Method:	Minimum Curvature
Design:	FINAL	Database:	USA EDM 5000 Multi Users DB

Survey

Measured Depth (ft)	Inclination (°)	Azimuth (°)	Vertical Depth (ft)	+N/-S (ft)	+E/-W (ft)	Vertical Section (ft)	Dogleg Rate (°/100ft)	Build Rate (°/100ft)	Formations / Comments
6,143.0	9.70	98.90	6,031.9	-151.9	1,089.8	-151.9	1.64	-1.60	
6,238.0	8.40	94.40	6,125.7	-153.6	1,104.7	-153.6	1.56	-1.37	
6,285.0	8.40	91.90	6,172.2	-154.0	1,111.5	-154.0	0.78	0.00	
6,333.0	10.80	89.10	6,219.6	-154.1	1,119.5	-154.1	5.09	5.00	
6,380.0	11.60	87.10	6,265.7	-153.8	1,128.6	-153.8	1.89	1.70	
6,427.0	13.30	76.40	6,311.6	-152.3	1,138.6	-152.3	6.08	3.62	
6,474.0	15.30	70.20	6,357.1	-148.9	1,149.7	-148.9	5.35	4.26	
6,522.0	17.10	61.90	6,403.2	-143.4	1,161.9	-143.4	6.10	3.75	
6,569.0	18.40	53.40	6,448.0	-135.7	1,173.9	-135.7	6.16	2.77	
6,617.0	18.60	45.80	6,493.5	-125.9	1,185.5	-125.9	5.04	0.42	
6,664.0	20.60	40.10	6,537.8	-114.3	1,196.2	-114.3	5.88	4.26	
6,712.0	23.30	35.30	6,582.3	-100.1	1,207.1	-100.1	6.75	5.62	
6,759.0	25.00	28.90	6,625.2	-83.8	1,217.3	-83.8	6.64	3.62	
6,807.0	25.60	24.70	6,668.6	-65.5	1,226.6	-65.5	3.94	1.25	
6,854.0	25.90	22.70	6,710.9	-46.8	1,234.8	-46.8	1.96	0.64	
6,902.0	27.90	22.30	6,753.7	-26.8	1,243.1	-26.8	4.18	4.17	
6,949.0	30.60	21.60	6,794.7	-5.5	1,251.6	-5.5	5.79	5.74	
6,997.0	33.60	21.40	6,835.4	18.3	1,261.0	18.3	6.25	6.25	
7,044.0	36.50	22.60	6,873.9	43.3	1,271.1	43.3	6.34	6.17	
7,092.0	39.20	19.50	6,911.8	70.8	1,281.7	70.8	6.88	5.62	
7,139.0	42.00	16.60	6,947.5	99.8	1,291.1	99.8	7.18	5.96	
7,187.0	45.40	15.40	6,982.1	131.7	1,300.2	131.7	7.29	7.08	
7,234.0	48.40	14.30	7,014.3	164.9	1,309.0	164.9	6.61	6.38	
7,282.0	51.40	12.40	7,045.2	200.6	1,317.5	200.6	6.94	6.25	
7,329.0	53.70	10.00	7,073.8	237.2	1,324.7	237.2	6.35	4.89	
7,377.0	53.80	7.80	7,102.1	275.4	1,330.7	275.4	3.70	0.21	
7,424.0	56.10	5.30	7,129.1	313.7	1,335.1	313.7	6.55	4.89	
7,472.0	61.50	4.40	7,154.0	354.6	1,338.6	354.6	11.36	11.25	
7,519.0	65.30	3.90	7,175.0	396.5	1,341.6	396.5	8.14	8.09	
7,566.0	68.30	4.00	7,193.5	439.6	1,344.6	439.6	6.39	6.38	
7,613.0	72.30	4.80	7,209.4	483.7	1,348.0	483.7	8.66	8.51	
7,661.0	77.60	2.80	7,221.8	529.9	1,351.0	529.9	11.75	11.04	
7,708.0	81.30	358.80	7,230.5	576.1	1,351.7	576.1	11.49	7.87	
7,756.0	85.00	356.70	7,236.2	623.7	1,349.8	623.7	8.85	7.71	
7,803.0	86.30	355.90	7,239.7	670.5	1,346.8	670.5	3.25	2.77	
7,895.0	89.50	358.00	7,243.1	762.3	1,341.9	762.3	4.16	3.48	
7,987.0	90.70	358.20	7,243.0	854.2	1,338.8	854.2	1.32	1.30	
8,079.0	90.50	0.50	7,242.0	946.2	1,337.8	946.2	2.51	-0.22	
8,173.0	90.80	0.30	7,240.9	1,040.2	1,338.4	1,040.2	0.38	0.32	
8,268.0	90.40	1.10	7,239.9	1,135.2	1,339.6	1,135.2	0.94	-0.42	
8,363.0	90.40	0.30	7,239.3	1,230.2	1,340.8	1,230.2	0.84	0.00	
8,458.0	90.40	1.90	7,238.6	1,325.1	1,342.6	1,325.1	1.68	0.00	
8,553.0	90.60	0.70	7,237.8	1,420.1	1,344.7	1,420.1	1.28	0.21	
8,647.0	90.10	1.60	7,237.2	1,514.1	1,346.6	1,514.1	1.10	-0.53	
8,742.0	91.50	1.00	7,235.9	1,609.0	1,348.8	1,609.0	1.60	1.47	
8,837.0	88.20	0.20	7,236.1	1,704.0	1,349.8	1,704.0	3.57	-3.47	
8,932.0	87.50	359.80	7,239.7	1,799.0	1,349.8	1,799.0	0.85	-0.74	
9,026.0	90.00	0.10	7,241.7	1,892.9	1,349.7	1,892.9	2.68	2.66	
9,122.0	89.80	359.20	7,241.9	1,988.9	1,349.1	1,988.9	0.96	-0.21	
9,216.0	91.30	1.40	7,241.0	2,082.9	1,349.6	2,082.9	2.83	1.60	
9,311.0	89.20	1.00	7,240.6	2,177.9	1,351.6	2,177.9	2.25	-2.21	
9,405.0	89.10	0.30	7,242.0	2,271.9	1,352.6	2,271.9	0.75	-0.11	
9,500.0	90.30	1.80	7,242.5	2,366.8	1,354.4	2,366.8	2.02	1.26	

Survey Report

Company:	EnCana Oil & Gas (USA) Inc	Local Co-ordinate Reference:	Well Grant-Hurt 1H-14H-G268
Project:	DJ Wattenberg	TVD Reference:	32' KB @ 4920.0ft (Patt 326)
Site:	S14-T2N-R68W (Grant Elmquist/Salisbury/Hurt)	MD Reference:	32' KB @ 4920.0ft (Patt 326)
Well:	Grant-Hurt 1H-14H-G268	North Reference:	True
Wellbore:	Hz	Survey Calculation Method:	Minimum Curvature
Design:	FINAL	Database:	USA EDM 5000 Multi Users DB

Survey

Measured Depth (ft)	Inclination (°)	Azimuth (°)	Vertical Depth (ft)	+N/-S (ft)	+E/-W (ft)	Vertical Section (ft)	Dogleg Rate (°/100ft)	Build Rate (°/100ft)	Formations / Comments
9,595.0	90.80	1.20	7,241.6	2,461.8	1,356.9	2,461.8	0.82	0.53	
9,689.0	89.60	1.30	7,241.2	2,555.8	1,358.9	2,555.8	1.28	-1.28	
9,784.0	89.00	0.90	7,242.4	2,650.8	1,360.8	2,650.8	0.76	-0.63	
9,879.0	88.40	1.00	7,244.6	2,745.7	1,362.3	2,745.7	0.64	-0.63	
9,973.0	90.00	0.70	7,245.9	2,839.7	1,363.7	2,839.7	1.73	1.70	
10,068.0	89.80	0.80	7,246.0	2,934.7	1,365.0	2,934.7	0.24	-0.21	
10,163.0	90.10	0.50	7,246.1	3,029.7	1,366.0	3,029.7	0.45	0.32	
10,258.0	89.50	0.50	7,246.4	3,124.7	1,366.9	3,124.7	0.63	-0.63	
10,353.0	90.30	359.40	7,246.6	3,219.7	1,366.8	3,219.7	1.43	0.84	
10,447.0	89.80	358.90	7,246.5	3,313.7	1,365.4	3,313.7	0.75	-0.53	
10,542.0	91.10	359.50	7,245.8	3,408.6	1,364.1	3,408.6	1.51	1.37	
10,637.0	92.00	0.20	7,243.2	3,503.6	1,363.8	3,503.6	1.20	0.95	
10,731.0	91.70	0.70	7,240.2	3,597.6	1,364.6	3,597.6	0.62	-0.32	
10,825.0	91.50	0.50	7,237.6	3,691.5	1,365.5	3,691.5	0.30	-0.21	
10,919.0	90.90	359.50	7,235.6	3,785.5	1,365.5	3,785.5	1.24	-0.64	
11,014.0	91.60	358.70	7,233.5	3,880.5	1,364.0	3,880.5	1.12	0.74	
11,108.0	91.60	358.00	7,230.9	3,974.4	1,361.3	3,974.4	0.74	0.00	
11,203.0	91.60	0.10	7,228.2	4,069.3	1,359.8	4,069.3	2.21	0.00	
11,297.0	91.20	1.20	7,225.9	4,163.3	1,360.8	4,163.3	1.24	-0.43	
11,392.0	89.50	1.70	7,225.4	4,258.3	1,363.2	4,258.3	1.87	-1.79	
11,486.0	89.70	1.20	7,226.0	4,352.2	1,365.6	4,352.2	0.57	0.21	
11,581.0	89.10	0.90	7,227.0	4,447.2	1,367.4	4,447.2	0.71	-0.63	
11,675.0	88.50	0.20	7,229.0	4,541.2	1,368.3	4,541.2	0.98	-0.64	
11,769.0	89.80	0.00	7,230.4	4,635.2	1,368.4	4,635.2	1.40	1.38	
11,864.0	89.90	359.80	7,230.6	4,730.2	1,368.3	4,730.2	0.24	0.11	
11,959.0	90.90	0.50	7,230.0	4,825.2	1,368.5	4,825.2	1.28	1.05	
12,054.0	90.50	359.50	7,228.8	4,920.1	1,368.5	4,920.1	1.13	-0.42	
12,149.0	91.20	358.80	7,227.4	5,015.1	1,367.1	5,015.1	1.04	0.74	
12,243.0	91.10	358.50	7,225.5	5,109.1	1,364.9	5,109.1	0.34	-0.11	
12,338.0	92.00	359.60	7,222.9	5,204.0	1,363.3	5,204.0	1.50	0.95	
12,433.0	90.70	1.80	7,220.7	5,299.0	1,364.5	5,299.0	2.69	-1.37	
12,528.0	90.00	0.50	7,220.1	5,394.0	1,366.4	5,394.0	1.55	-0.74	
12,623.0	90.10	1.00	7,220.0	5,489.0	1,367.6	5,489.0	0.54	0.11	
12,717.0	92.40	1.00	7,218.0	5,582.9	1,369.3	5,582.9	2.45	2.45	
12,812.0	92.30	0.50	7,214.1	5,677.8	1,370.5	5,677.8	0.54	-0.11	
12,906.0	92.30	359.60	7,210.3	5,771.7	1,370.6	5,771.7	0.96	0.00	
13,001.0	92.40	358.90	7,206.4	5,866.7	1,369.3	5,866.7	0.74	0.11	
13,095.0	91.00	359.50	7,203.6	5,960.6	1,368.0	5,960.6	1.62	-1.49	
13,190.0	91.30	359.30	7,201.7	6,055.6	1,367.0	6,055.6	0.38	0.32	
13,285.0	91.00	1.00	7,199.8	6,150.6	1,367.3	6,150.6	1.82	-0.32	
13,380.0	91.30	0.30	7,197.9	6,245.5	1,368.4	6,245.5	0.80	0.32	
13,475.0	90.20	1.20	7,196.7	6,340.5	1,369.6	6,340.5	1.50	-1.16	
13,570.0	90.20	0.40	7,196.3	6,435.5	1,370.9	6,435.5	0.84	0.00	
13,665.0	90.10	359.90	7,196.1	6,530.5	1,371.2	6,530.5	0.54	-0.11	
13,760.0	90.10	359.60	7,195.9	6,625.5	1,370.8	6,625.5	0.32	0.00	
13,854.0	90.00	358.80	7,195.8	6,719.5	1,369.5	6,719.5	0.86	-0.11	
13,949.0	89.60	359.70	7,196.2	6,814.5	1,368.2	6,814.5	1.04	-0.42	
14,044.0	89.20	359.80	7,197.2	6,909.5	1,367.8	6,909.5	0.43	-0.42	
14,139.0	89.20	359.50	7,198.5	7,004.5	1,367.2	7,004.5	0.32	0.00	
14,234.0	89.00	358.70	7,200.0	7,099.4	1,365.7	7,099.4	0.87	-0.21	
14,325.0	89.10	358.50	7,201.5	7,190.4	1,363.5	7,190.4	0.25	0.11	Last CES Survey @ 14,325' MD
14,375.0	89.10	358.50	7,202.3	7,240.4	1,362.2	7,240.4	0.00	0.00	PTB @ 14,375'

Survey Report

Company:	EnCana Oil & Gas (USA) Inc	Local Co-ordinate Reference:	Well Grant-Hurt 1H-14H-G268
Project:	DJ Wattenberg	TVD Reference:	32' KB @ 4920.0ft (Patt 326)
Site:	S14-T2N-R68W (Grant Elmquist/Salisbury/Hurt)	MD Reference:	32' KB @ 4920.0ft (Patt 326)
Well:	Grant-Hurt 1H-14H-G268	North Reference:	True
Wellbore:	Hz	Survey Calculation Method:	Minimum Curvature
Design:	FINAL	Database:	USA EDM 5000 Multi Users DB

Targets									
Target Name									
- hit/miss target	Dip Angle	Dip Dir.	TVD	+N/-S	+E/-W	Northing	Easting	Latitude	Longitude
- Shape	(°)	(°)	(ft)	(ft)	(ft)	(ft)	(ft)		
Grant-Hurt 1H-14H-G26: - actual wellpath misses target center by 57.7ft at 14375.0ft MD (7202.3 TVD, 7240.4 N, 1362.2 E) - Point	0.00	0.00	7,210.0	7,296.6	1,372.3	1,301,339.31	3,150,496.10	40.159310	-104.961570
Grant-Hurt 1H-14H-G26: - actual wellpath misses target center by 25.4ft at 7252.7ft MD (7026.5 TVD, 178.6 N, 1312.4 E) - Point	0.00	0.00	7,044.0	166.8	1,298.1	1,294,209.22	3,150,464.79	40.139738	-104.961837
Grant-Hurt 1H-14H-G26: - actual wellpath misses target center by 21.0ft at 10718.2ft MD (7240.6 TVD, 3584.7 N, 1364.4 E) - Point	0.00	0.00	7,260.0	3,585.3	1,372.3	1,297,628.06	3,150,518.43	40.149122	-104.961571
Grant-Hurt 1H-14H-G26: - actual wellpath misses target center by 60.1ft at 14375.0ft MD (7202.3 TVD, 7240.4 N, 1362.2 E) - Point	0.00	0.00	7,221.0	7,296.6	1,372.3	1,301,339.31	3,150,496.10	40.159310	-104.961570
Grant-Hurt 1H-14H-G26: - actual wellpath misses target center by 20.6ft at 7818.4ft MD (7240.7 TVD, 685.8 N, 1345.7 E) - Point	0.00	0.00	7,260.0	685.5	1,352.8	1,294,728.18	3,150,516.34	40.141162	-104.961641
Grant-Hurt 1H-14H-G26: - actual wellpath misses target center by 59.2ft at 14375.0ft MD (7202.3 TVD, 7240.4 N, 1362.2 E) - Point	0.00	0.00	7,187.0	7,296.6	1,372.3	1,301,339.31	3,150,496.10	40.159310	-104.961570

Design Annotations				
Measured Depth	Vertical Depth	Local Coordinates		Comment
(ft)	(ft)	+N/-S (ft)	+E/-W (ft)	
14,325.0	7,201.5	7,190.4	1,363.5	Last CES Survey @ 14,325' MD
14,375.0	7,202.3	7,240.4	1,362.2	PTB @ 14,375'

Checked By: _____	Approved By: _____	Date: _____
-------------------	--------------------	-------------

EnCana Oil & Gas (USA) Inc

DJ Wattenberg

S14-T2N-R68W (Grant Elmquist/Salisbury/Hurt)

Grant-Hurt 1H-14H-G268

Hz

Design: FINAL

Survey Report - Geographic

02 October, 2014

Survey Report - Geographic

Company:	EnCana Oil & Gas (USA) Inc	Local Co-ordinate Reference:	Well Grant-Hurt 1H-14H-G268
Project:	DJ Wattenberg	TVD Reference:	32' KB @ 4920.0ft (Patt 326)
Site:	S14-T2N-R68W (Grant Elmquist/Salisbury/Hurt)	MD Reference:	32' KB @ 4920.0ft (Patt 326)
Well:	Grant-Hurt 1H-14H-G268	North Reference:	True
Wellbore:	Hz	Survey Calculation Method:	Minimum Curvature
Design:	FINAL	Database:	USA EDM 5000 Multi Users DB

Project	DJ Wattenberg		
Map System:	US State Plane 1983	System Datum:	Mean Sea Level
Geo Datum:	North American Datum 1983		
Map Zone:	Colorado Northern Zone		

Site		S14-T2N-R68W (Grant Elmquist/Salisbury/Hurt)			
Site Position:		Northing:	1,295,686.81 ft	Latitude:	40.143850
From:	Lat/Long	Easting:	3,147,060.98 ft	Longitude:	-104.973980
Position Uncertainty:	0.0 ft	Slot Radius:	13.200 in	Grid Convergence:	0.34 °

Well	Grant-Hurt 1H-14H-G268					
Well Position	+N/-S	0.0 ft	Northing:	1,294,034.58 ft	Latitude:	40.139280
	+E/-W	0.0 ft	Easting:	3,149,167.68 ft	Longitude:	-104.966480
Position Uncertainty		0.0 ft	Wellhead Elevation:	ft	Ground Level:	4,888.0 ft

Wellbore	Hz				
Magnetics	Model Name	Sample Date	Declination (°)	Dip Angle (°)	Field Strength (nT)
	IGRF2010	6/24/2013	8.68	66.74	52,759

Design	FINAL				
Audit Notes:					
Version:	1.0	Phase:	ACTUAL	Tie On Depth:	0.0
Vertical Section:	Depth From (TVD) (ft)	+N/-S (ft)	+E/-W (ft)	Direction (°)	
	0.0	0.0	0.0	0.00	

Survey Program	Date	10/2/2014			
From (ft)	To (ft)	Survey (Wellbore)	Tool Name	Description	
146.0	14,375.0	Survey #1 (Hz)	Geolink MWD	Geolink MWD	

Survey										
Measured Depth (ft)	Inclination (°)	Azimuth (°)	Vertical Depth (ft)	+N/-S (ft)	+E/-W (ft)	Map Northing (ft)	Map Easting (ft)	Latitude	Longitude	
0.0	0.00	0.00	0.0	0.0	0.0	1,294,034.58	3,149,167.68	40.139280	-104.966480	
146.0	0.40	221.00	146.0	-0.4	-0.3	1,294,034.19	3,149,167.35	40.139279	-104.966481	
241.0	1.00	133.90	241.0	-1.2	0.0	1,294,033.37	3,149,167.74	40.139277	-104.966480	
335.0	1.70	128.10	335.0	-2.6	1.7	1,294,031.95	3,149,169.43	40.139273	-104.966474	
430.0	2.30	104.40	429.9	-4.0	4.7	1,294,030.62	3,149,172.40	40.139269	-104.966463	
525.0	3.40	95.10	524.8	-4.7	9.3	1,294,029.93	3,149,177.05	40.139267	-104.966447	
620.0	4.70	89.50	619.6	-4.9	16.0	1,294,029.75	3,149,183.75	40.139267	-104.966423	
714.0	5.10	94.10	713.2	-5.2	24.1	1,294,029.53	3,149,191.77	40.139266	-104.966394	
809.0	5.30	97.70	807.8	-6.1	32.6	1,294,028.70	3,149,200.34	40.139263	-104.966364	
835.0	5.20	97.90	833.7	-6.4	35.0	1,294,028.39	3,149,202.70	40.139262	-104.966355	
895.0	5.40	107.40	893.5	-7.6	40.4	1,294,027.20	3,149,208.09	40.139259	-104.966336	
989.0	7.30	108.10	986.9	-10.8	50.3	1,294,024.08	3,149,218.01	40.139250	-104.966300	

Survey Report - Geographic

Company:	EnCana Oil & Gas (USA) Inc	Local Co-ordinate Reference:	Well Grant-Hurt 1H-14H-G268
Project:	DJ Wattenberg	TVD Reference:	32' KB @ 4920.0ft (Patt 326)
Site:	S14-T2N-R68W (Grant Elmquist/Salisbury/Hurt)	MD Reference:	32' KB @ 4920.0ft (Patt 326)
Well:	Grant-Hurt 1H-14H-G268	North Reference:	True
Wellbore:	Hz	Survey Calculation Method:	Minimum Curvature
Design:	FINAL	Database:	USA EDM 5000 Multi Users DB

Survey									
Measured Depth (ft)	Inclination (°)	Azimuth (°)	Vertical Depth (ft)	+N/-S (ft)	+E/-W (ft)	Map Northing (ft)	Map Easting (ft)	Latitude	Longitude
1,083.0	9.50	103.10	1,079.9	-14.4	63.5	1,294,020.55	3,149,231.26	40.139240	-104.966253
1,178.0	11.00	97.50	1,173.3	-17.4	80.1	1,294,017.69	3,149,247.90	40.139232	-104.966194
1,273.0	10.90	97.50	1,266.6	-19.7	98.0	1,294,015.44	3,149,265.81	40.139226	-104.966130
1,367.0	12.90	94.60	1,358.6	-21.7	117.3	1,294,013.55	3,149,285.09	40.139220	-104.966061
1,462.0	13.00	91.60	1,451.2	-22.9	138.5	1,294,012.53	3,149,306.35	40.139217	-104.965985
1,554.0	12.80	88.40	1,540.9	-22.9	159.1	1,294,012.65	3,149,326.88	40.139217	-104.965911
1,645.0	12.00	97.10	1,629.7	-23.8	178.5	1,294,011.88	3,149,346.35	40.139215	-104.965842
1,737.0	12.00	96.60	1,719.7	-26.1	197.5	1,294,009.72	3,149,365.36	40.139209	-104.965774
1,829.0	11.80	96.00	1,809.8	-28.1	216.4	1,294,007.75	3,149,384.22	40.139203	-104.965706
1,922.0	11.50	95.30	1,900.8	-30.0	235.1	1,294,006.01	3,149,402.92	40.139198	-104.965639
2,014.0	11.40	92.80	1,991.0	-31.3	253.3	1,294,004.83	3,149,421.14	40.139194	-104.965574
2,106.0	11.40	93.30	2,081.2	-32.2	271.4	1,294,003.97	3,149,439.31	40.139192	-104.965509
2,198.0	10.70	103.80	2,171.5	-34.8	288.8	1,294,001.51	3,149,456.70	40.139184	-104.965447
2,290.0	10.20	101.80	2,262.0	-38.5	305.1	1,293,997.91	3,149,472.99	40.139174	-104.965389
2,382.0	10.00	101.20	2,352.5	-41.7	320.9	1,293,994.78	3,149,488.81	40.139165	-104.965333
2,474.0	11.40	100.40	2,442.9	-44.9	337.7	1,293,991.69	3,149,505.61	40.139157	-104.965273
2,566.0	11.00	100.50	2,533.2	-48.2	355.2	1,293,988.56	3,149,523.21	40.139148	-104.965210
2,658.0	12.70	102.60	2,623.2	-52.0	373.7	1,293,984.86	3,149,541.73	40.139137	-104.965143
2,750.0	11.80	101.90	2,713.1	-56.1	392.8	1,293,980.83	3,149,560.83	40.139126	-104.965075
2,842.0	11.50	101.70	2,803.2	-59.9	411.0	1,293,977.14	3,149,579.04	40.139116	-104.965010
2,936.0	13.50	97.00	2,895.0	-63.1	431.1	1,293,974.03	3,149,599.12	40.139107	-104.964938
3,031.0	13.10	97.50	2,987.5	-65.9	452.7	1,293,971.40	3,149,620.82	40.139099	-104.964861
3,125.0	12.10	96.70	3,079.2	-68.4	473.1	1,293,968.98	3,149,641.18	40.139092	-104.964788
3,219.0	11.50	93.90	3,171.2	-70.2	492.2	1,293,967.31	3,149,660.33	40.139087	-104.964720
3,313.0	12.10	98.90	3,263.2	-72.4	511.3	1,293,965.26	3,149,679.42	40.139081	-104.964651
3,407.0	11.30	99.30	3,355.3	-75.4	530.1	1,293,962.36	3,149,698.26	40.139073	-104.964584
3,500.0	12.50	98.50	3,446.3	-78.4	549.1	1,293,959.52	3,149,717.22	40.139065	-104.964516
3,594.0	11.60	99.20	3,538.2	-81.4	568.5	1,293,956.62	3,149,736.63	40.139057	-104.964447
3,689.0	13.60	96.70	3,630.9	-84.2	589.0	1,293,953.91	3,149,757.17	40.139049	-104.964374
3,782.0	13.10	97.40	3,721.4	-86.8	610.3	1,293,951.41	3,149,778.50	40.139042	-104.964297
3,877.0	12.40	99.20	3,814.0	-89.9	631.1	1,293,948.52	3,149,799.26	40.139033	-104.964223
3,970.0	11.90	98.10	3,905.0	-92.8	650.4	1,293,945.68	3,149,818.63	40.139025	-104.964154
4,064.0	13.60	95.20	3,996.6	-95.2	671.0	1,293,943.44	3,149,839.25	40.139019	-104.964080
4,158.0	13.10	96.40	4,088.1	-97.4	692.6	1,293,941.38	3,149,860.85	40.139013	-104.964003
4,252.0	12.00	96.50	4,179.9	-99.7	712.9	1,293,939.21	3,149,881.16	40.139006	-104.963930
4,346.0	11.60	95.20	4,271.9	-101.6	732.0	1,293,937.36	3,149,900.29	40.139001	-104.963862
4,440.0	12.40	91.00	4,363.8	-102.7	751.5	1,293,936.45	3,149,919.80	40.138998	-104.963792
4,534.0	11.80	91.20	4,455.7	-103.0	771.2	1,293,936.19	3,149,939.50	40.138997	-104.963722
4,628.0	13.20	96.20	4,547.5	-104.4	791.5	1,293,934.95	3,149,959.79	40.138993	-104.963649
4,723.0	12.40	96.40	4,640.1	-106.7	812.4	1,293,932.77	3,149,980.73	40.138987	-104.963574
4,817.0	11.90	94.60	4,732.0	-108.6	832.1	1,293,930.98	3,150,000.43	40.138982	-104.963504
4,912.0	11.20	95.10	4,825.1	-110.2	851.1	1,293,929.49	3,150,019.39	40.138977	-104.963436
5,006.0	11.40	101.80	4,917.3	-112.9	869.2	1,293,926.89	3,150,037.59	40.138970	-104.963371
5,101.0	10.50	101.10	5,010.6	-116.5	886.9	1,293,923.41	3,150,055.30	40.138960	-104.963308
5,195.0	12.70	98.20	5,102.6	-119.6	905.6	1,293,920.40	3,150,073.95	40.138952	-104.963241
5,289.0	11.40	98.60	5,194.6	-122.5	925.0	1,293,917.65	3,150,093.38	40.138944	-104.963172
5,384.0	10.80	97.00	5,287.8	-125.0	943.1	1,293,915.27	3,150,111.52	40.138937	-104.963107
5,479.0	12.10	98.20	5,380.9	-127.5	961.8	1,293,912.88	3,150,130.22	40.138930	-104.963040
5,574.0	10.80	96.80	5,474.0	-130.0	980.5	1,293,910.52	3,150,148.93	40.138923	-104.962973
5,669.0	12.00	101.80	5,567.1	-133.0	999.0	1,293,907.56	3,150,167.45	40.138915	-104.962907
5,764.0	11.00	100.70	5,660.2	-136.7	1,017.6	1,293,903.97	3,150,186.05	40.138905	-104.962841
5,859.0	11.00	103.30	5,753.5	-140.5	1,035.3	1,293,900.31	3,150,203.80	40.138894	-104.962777
5,954.0	12.40	103.10	5,846.5	-144.9	1,054.0	1,293,896.02	3,150,222.58	40.138882	-104.962710
6,049.0	11.20	100.80	5,939.5	-148.9	1,073.0	1,293,892.09	3,150,241.60	40.138871	-104.962642
6,143.0	9.70	98.90	6,031.9	-151.9	1,089.8	1,293,889.26	3,150,258.41	40.138863	-104.962582

Survey Report - Geographic

Company:	EnCana Oil & Gas (USA) Inc	Local Co-ordinate Reference:	Well Grant-Hurt 1H-14H-G268
Project:	DJ Wattenberg	TVD Reference:	32' KB @ 4920.0ft (Patt 326)
Site:	S14-T2N-R68W (Grant Elmquist/Salisbury/Hurt)	MD Reference:	32' KB @ 4920.0ft (Patt 326)
Well:	Grant-Hurt 1H-14H-G268	North Reference:	True
Wellbore:	Hz	Survey Calculation Method:	Minimum Curvature
Design:	FINAL	Database:	USA EDM 5000 Multi Users DB

Survey									
Measured Depth (ft)	Inclination (°)	Azimuth (°)	Vertical Depth (ft)	+N/-S (ft)	+E/-W (ft)	Map Northing (ft)	Map Easting (ft)	Latitude	Longitude
6,238.0	8.40	94.40	6,125.7	-153.6	1,104.7	1,293,887.58	3,150,273.25	40.138858	-104.962529
6,285.0	8.40	91.90	6,172.2	-154.0	1,111.5	1,293,887.24	3,150,280.10	40.138857	-104.962505
6,333.0	10.80	89.10	6,219.6	-154.1	1,119.5	1,293,887.25	3,150,288.10	40.138857	-104.962476
6,380.0	11.60	87.10	6,265.7	-153.8	1,128.6	1,293,887.61	3,150,297.23	40.138858	-104.962443
6,427.0	13.30	76.40	6,311.6	-152.3	1,138.6	1,293,889.18	3,150,307.19	40.138862	-104.962408
6,474.0	15.30	70.20	6,357.1	-148.9	1,149.7	1,293,892.62	3,150,318.26	40.138871	-104.962368
6,522.0	17.10	61.90	6,403.2	-143.4	1,161.9	1,293,898.16	3,150,330.42	40.138886	-104.962324
6,569.0	18.40	53.40	6,448.0	-135.7	1,173.9	1,293,905.91	3,150,342.42	40.138907	-104.962281
6,617.0	18.60	45.80	6,493.5	-125.9	1,185.5	1,293,915.84	3,150,353.93	40.138934	-104.962240
6,664.0	20.60	40.10	6,537.8	-114.3	1,196.2	1,293,927.45	3,150,364.57	40.138966	-104.962202
6,712.0	23.30	35.30	6,582.3	-100.1	1,207.1	1,293,941.73	3,150,375.41	40.139005	-104.962163
6,759.0	25.00	28.90	6,625.2	-83.8	1,217.3	1,293,958.08	3,150,385.48	40.139050	-104.962126
6,807.0	25.60	24.70	6,668.6	-65.5	1,226.6	1,293,976.43	3,150,394.61	40.139100	-104.962093
6,854.0	25.90	22.70	6,710.9	-46.8	1,234.8	1,293,995.18	3,150,402.70	40.139151	-104.962064
6,902.0	27.90	22.30	6,753.7	-26.8	1,243.1	1,294,015.29	3,150,410.89	40.139206	-104.962034
6,949.0	30.60	21.60	6,794.7	-5.5	1,251.6	1,294,036.64	3,150,419.34	40.139265	-104.962003
6,997.0	33.60	21.40	6,835.4	18.3	1,261.0	1,294,060.43	3,150,428.54	40.139330	-104.961970
7,044.0	36.50	22.60	6,873.9	43.3	1,271.1	1,294,085.51	3,150,438.51	40.139399	-104.961934
7,092.0	39.20	19.50	6,911.8	70.8	1,281.7	1,294,113.06	3,150,448.90	40.139474	-104.961896
7,139.0	42.00	16.60	6,947.5	99.8	1,291.1	1,294,142.19	3,150,458.17	40.139554	-104.961862
7,187.0	45.40	15.40	6,982.1	131.7	1,300.2	1,294,174.12	3,150,467.11	40.139642	-104.961830
7,234.0	48.40	14.30	7,014.3	164.9	1,309.0	1,294,207.34	3,150,475.70	40.139733	-104.961798
7,282.0	51.40	12.40	7,045.2	200.6	1,317.5	1,294,243.11	3,150,483.94	40.139831	-104.961768
7,329.0	53.70	10.00	7,073.8	237.2	1,324.7	1,294,279.75	3,150,490.96	40.139931	-104.961742
7,377.0	53.80	7.80	7,102.1	275.4	1,330.7	1,294,318.03	3,150,496.72	40.140036	-104.961721
7,424.0	56.10	5.30	7,129.1	313.7	1,335.1	1,294,356.27	3,150,500.86	40.140141	-104.961705
7,472.0	61.50	4.40	7,154.0	354.6	1,338.6	1,294,397.19	3,150,504.08	40.140253	-104.961693
7,519.0	65.30	3.90	7,175.0	396.5	1,341.6	1,294,439.11	3,150,506.86	40.140368	-104.961682
7,566.0	68.30	4.00	7,193.5	439.6	1,344.6	1,294,482.22	3,150,509.58	40.140487	-104.961671
7,613.0	72.30	4.80	7,209.4	483.7	1,348.0	1,294,526.35	3,150,512.71	40.140608	-104.961659
7,661.0	77.60	2.80	7,221.8	529.9	1,351.0	1,294,572.60	3,150,515.49	40.140735	-104.961648
7,708.0	81.30	358.80	7,230.5	576.1	1,351.7	1,294,618.79	3,150,515.85	40.140861	-104.961646
7,756.0	85.00	356.70	7,236.2	623.7	1,349.8	1,294,666.38	3,150,513.69	40.140992	-104.961652
7,803.0	86.30	355.90	7,239.7	670.5	1,346.8	1,294,713.13	3,150,510.39	40.141120	-104.961663
7,895.0	89.50	358.00	7,243.1	762.3	1,341.9	1,294,804.89	3,150,504.94	40.141372	-104.961681
7,987.0	90.70	358.20	7,243.0	854.2	1,338.8	1,294,896.82	3,150,501.34	40.141625	-104.961691
8,079.0	90.50	0.50	7,242.0	946.2	1,337.8	1,294,988.79	3,150,499.74	40.141877	-104.961695
8,173.0	90.80	0.30	7,240.9	1,040.2	1,338.4	1,295,082.79	3,150,499.83	40.142135	-104.961693
8,268.0	90.40	1.10	7,239.9	1,135.2	1,339.6	1,295,177.78	3,150,500.42	40.142396	-104.961689
8,363.0	90.40	0.30	7,239.3	1,230.2	1,340.8	1,295,272.77	3,150,501.01	40.142657	-104.961684
8,458.0	90.40	1.90	7,238.6	1,325.1	1,342.6	1,295,367.76	3,150,502.26	40.142918	-104.961678
8,553.0	90.60	0.70	7,237.8	1,420.1	1,344.7	1,295,462.74	3,150,503.85	40.143178	-104.961670
8,647.0	90.10	1.60	7,237.2	1,514.1	1,346.6	1,295,556.73	3,150,505.17	40.143436	-104.961663
8,742.0	91.50	1.00	7,235.9	1,609.0	1,348.8	1,295,651.70	3,150,506.75	40.143697	-104.961656
8,837.0	88.20	0.20	7,236.1	1,704.0	1,349.8	1,295,746.69	3,150,507.18	40.143958	-104.961652
8,932.0	87.50	359.80	7,239.7	1,799.0	1,349.8	1,295,841.62	3,150,506.61	40.144218	-104.961652
9,026.0	90.00	0.10	7,241.7	1,892.9	1,349.7	1,295,935.59	3,150,505.96	40.144476	-104.961652
9,122.0	89.80	359.20	7,241.9	1,988.9	1,349.1	1,296,031.58	3,150,504.79	40.144740	-104.961654
9,216.0	91.30	1.40	7,241.0	2,082.9	1,349.6	1,296,125.57	3,150,504.72	40.144998	-104.961653
9,311.0	89.20	1.00	7,240.6	2,177.9	1,351.6	1,296,220.55	3,150,506.14	40.145259	-104.961646
9,405.0	89.10	0.30	7,242.0	2,271.9	1,352.6	1,296,314.54	3,150,506.64	40.145516	-104.961642
9,500.0	90.30	1.80	7,242.5	2,366.8	1,354.4	1,296,409.52	3,150,507.81	40.145777	-104.961635
9,595.0	90.80	1.20	7,241.6	2,461.8	1,356.9	1,296,504.50	3,150,509.72	40.146038	-104.961627
9,689.0	89.60	1.30	7,241.2	2,555.8	1,358.9	1,296,598.48	3,150,511.21	40.146296	-104.961619
9,784.0	89.00	0.90	7,242.4	2,650.8	1,360.8	1,296,693.47	3,150,512.46	40.146557	-104.961613

Survey Report - Geographic

Company:	EnCana Oil & Gas (USA) Inc	Local Co-ordinate Reference:	Well Grant-Hurt 1H-14H-G268
Project:	DJ Wattenberg	TVD Reference:	32' KB @ 4920.0ft (Patt 326)
Site:	S14-T2N-R68W (Grant Elmquist/Salisbury/Hurt)	MD Reference:	32' KB @ 4920.0ft (Patt 326)
Well:	Grant-Hurt 1H-14H-G268	North Reference:	True
Wellbore:	Hz	Survey Calculation Method:	Minimum Curvature
Design:	FINAL	Database:	USA EDM 5000 Multi Users DB

Survey									
Measured Depth (ft)	Inclination (°)	Azimuth (°)	Vertical Depth (ft)	+N/-S (ft)	+E/-W (ft)	Map Northing (ft)	Map Easting (ft)	Latitude	Longitude
9,879.0	88.40	1.00	7,244.6	2,745.7	1,362.3	1,296,788.44	3,150,513.46	40.146817	-104.961607
9,973.0	90.00	0.70	7,245.9	2,839.7	1,363.7	1,296,882.42	3,150,514.29	40.147075	-104.961602
10,068.0	89.80	0.80	7,246.0	2,934.7	1,365.0	1,296,977.42	3,150,514.97	40.147336	-104.961598
10,163.0	90.10	0.50	7,246.1	3,029.7	1,366.0	1,297,072.42	3,150,515.47	40.147597	-104.961594
10,258.0	89.50	0.50	7,246.4	3,124.7	1,366.9	1,297,167.42	3,150,515.73	40.147858	-104.961591
10,353.0	90.30	359.40	7,246.6	3,219.7	1,366.8	1,297,262.41	3,150,515.07	40.148118	-104.961591
10,447.0	89.80	358.90	7,246.5	3,313.7	1,365.4	1,297,356.39	3,150,513.11	40.148376	-104.961596
10,542.0	91.10	359.50	7,245.8	3,408.6	1,364.1	1,297,451.37	3,150,511.22	40.148637	-104.961601
10,637.0	92.00	0.20	7,243.2	3,503.6	1,363.8	1,297,546.33	3,150,510.40	40.148898	-104.961602
10,731.0	91.70	0.70	7,240.2	3,597.6	1,364.6	1,297,640.28	3,150,510.57	40.149156	-104.961599
10,825.0	91.50	0.50	7,237.6	3,691.5	1,365.5	1,297,734.24	3,150,510.99	40.149414	-104.961595
10,919.0	90.90	359.50	7,235.6	3,785.5	1,365.5	1,297,828.22	3,150,510.42	40.149672	-104.961595
11,014.0	91.60	358.70	7,233.5	3,880.5	1,364.0	1,297,923.17	3,150,508.36	40.149932	-104.961601
11,108.0	91.60	358.00	7,230.9	3,974.4	1,361.3	1,298,017.08	3,150,505.09	40.150190	-104.961610
11,203.0	91.60	0.10	7,228.2	4,069.3	1,359.8	1,298,112.01	3,150,502.94	40.150451	-104.961616
11,297.0	91.20	1.20	7,225.9	4,163.3	1,360.8	1,298,205.98	3,150,503.44	40.150709	-104.961612
11,392.0	89.50	1.70	7,225.4	4,258.3	1,363.2	1,298,300.95	3,150,505.28	40.150969	-104.961603
11,486.0	89.70	1.20	7,226.0	4,352.2	1,365.6	1,298,394.93	3,150,507.09	40.151227	-104.961595
11,581.0	89.10	0.90	7,227.0	4,447.2	1,367.4	1,298,489.92	3,150,508.26	40.151488	-104.961589
11,675.0	88.50	0.20	7,229.0	4,541.2	1,368.3	1,298,583.90	3,150,508.60	40.151746	-104.961585
11,769.0	89.80	0.00	7,230.4	4,635.2	1,368.4	1,298,677.89	3,150,508.19	40.152004	-104.961585
11,864.0	89.90	359.80	7,230.6	4,730.2	1,368.3	1,298,772.88	3,150,507.46	40.152265	-104.961585
11,959.0	90.90	0.50	7,230.0	4,825.2	1,368.5	1,298,867.88	3,150,507.13	40.152526	-104.961584
12,054.0	90.50	359.50	7,228.8	4,920.1	1,368.5	1,298,962.87	3,150,506.56	40.152786	-104.961584
12,149.0	91.20	358.80	7,227.4	5,015.1	1,367.1	1,299,057.84	3,150,504.58	40.153047	-104.961589
12,243.0	91.10	358.50	7,225.5	5,109.1	1,364.9	1,299,151.78	3,150,501.80	40.153305	-104.961597
12,338.0	92.00	359.60	7,222.9	5,204.0	1,363.3	1,299,246.71	3,150,499.66	40.153566	-104.961603
12,433.0	90.70	1.80	7,220.7	5,299.0	1,364.5	1,299,341.68	3,150,500.25	40.153826	-104.961599
12,528.0	90.00	0.50	7,220.1	5,394.0	1,366.4	1,299,436.66	3,150,501.58	40.154087	-104.961592
12,623.0	90.10	1.00	7,220.0	5,489.0	1,367.6	1,299,531.66	3,150,502.25	40.154348	-104.961588
12,717.0	92.40	1.00	7,218.0	5,582.9	1,369.3	1,299,625.63	3,150,503.33	40.154606	-104.961582
12,812.0	92.30	0.50	7,214.1	5,677.8	1,370.5	1,299,720.54	3,150,504.00	40.154866	-104.961577
12,906.0	92.30	359.60	7,210.3	5,771.7	1,370.6	1,299,814.47	3,150,503.52	40.155124	-104.961577
13,001.0	92.40	358.90	7,206.4	5,866.7	1,369.3	1,299,909.37	3,150,501.70	40.155385	-104.961581
13,095.0	91.00	359.50	7,203.6	5,960.6	1,368.0	1,300,003.31	3,150,499.83	40.155643	-104.961586
13,190.0	91.30	359.30	7,201.7	6,055.6	1,367.0	1,300,098.27	3,150,498.26	40.155903	-104.961590
13,285.0	91.00	1.00	7,199.8	6,150.6	1,367.3	1,300,193.25	3,150,497.94	40.156164	-104.961589
13,380.0	91.30	0.30	7,197.9	6,245.5	1,368.4	1,300,288.23	3,150,498.44	40.156425	-104.961585
13,475.0	90.20	1.20	7,196.7	6,340.5	1,369.6	1,300,383.22	3,150,499.11	40.156685	-104.961580
13,570.0	90.20	0.40	7,196.3	6,435.5	1,370.9	1,300,478.21	3,150,499.87	40.156946	-104.961575
13,665.0	90.10	359.90	7,196.1	6,530.5	1,371.2	1,300,573.21	3,150,499.55	40.157207	-104.961575
13,760.0	90.10	359.60	7,195.9	6,625.5	1,370.8	1,300,668.20	3,150,498.56	40.157468	-104.961576
13,854.0	90.00	358.80	7,195.8	6,719.5	1,369.5	1,300,762.19	3,150,496.68	40.157726	-104.961581
13,949.0	89.60	359.70	7,196.2	6,814.5	1,368.2	1,300,857.17	3,150,494.87	40.157987	-104.961585
14,044.0	89.20	359.80	7,197.2	6,909.5	1,367.8	1,300,952.16	3,150,493.88	40.158247	-104.961587
14,139.0	89.20	359.50	7,198.5	7,004.5	1,367.2	1,301,047.14	3,150,492.73	40.158508	-104.961589
14,234.0	89.00	358.70	7,200.0	7,099.4	1,365.7	1,301,142.10	3,150,490.67	40.158769	-104.961594
14,325.0	89.10	358.50	7,201.5	7,190.4	1,363.5	1,301,233.05	3,150,487.90	40.159019	-104.961602
Last CES Survey @ 14,325' MD									
14,375.0	89.10	358.50	7,202.3	7,240.4	1,362.2	1,301,283.02	3,150,486.29	40.159156	-104.961607
PTB @ 14,375'									

Survey Report - Geographic

Company:	EnCana Oil & Gas (USA) Inc	Local Co-ordinate Reference:	Well Grant-Hurt 1H-14H-G268
Project:	DJ Wattenberg	TVD Reference:	32' KB @ 4920.0ft (Patt 326)
Site:	S14-T2N-R68W (Grant Elmquist/Salisbury/Hurt)	MD Reference:	32' KB @ 4920.0ft (Patt 326)
Well:	Grant-Hurt 1H-14H-G268	North Reference:	True
Wellbore:	Hz	Survey Calculation Method:	Minimum Curvature
Design:	FINAL	Database:	USA EDM 5000 Multi Users DB

Design Targets									
Target Name - hit/miss target - Shape	Dip Angle (°)	Dip Dir. (°)	TVD (ft)	+N/-S (ft)	+E/-W (ft)	Northing (ft)	Easting (ft)	Latitude	Longitude
Grant-Hurt 1H-14H-G268 - actual wellpath misses target center by 25.4ft at 7252.7ft MD (7026.5 TVD, 178.6 N, 1312.4 E) - Point	0.00	0.00	7,044.0	166.8	1,298.1	1,294,209.22	3,150,464.80	40.139738	-104.961837
Grant-Hurt 1H-14H-G268 - actual wellpath misses target center by 57.7ft at 14375.0ft MD (7202.3 TVD, 7240.4 N, 1362.2 E) - Point	0.00	0.00	7,210.0	7,296.6	1,372.3	1,301,339.31	3,150,496.10	40.159310	-104.961570
Grant-Hurt 1H-14H-G268 - actual wellpath misses target center by 21.0ft at 10718.2ft MD (7240.6 TVD, 3584.7 N, 1364.4 E) - Point	0.00	0.00	7,260.0	3,585.3	1,372.3	1,297,628.06	3,150,518.43	40.149122	-104.961571

Design Annotations				
Measured Depth (ft)	Vertical Depth (ft)	Local Coordinates		Comment
		+N/-S (ft)	+E/-W (ft)	
14,325.0	7,201.5	7,190.4	1,363.5	Last CES Survey @ 14,325' MD
14,375.0	7,202.3	7,240.4	1,362.2	PTB @ 14,375'

Checked By: _____	Approved By: _____	Date: _____
-------------------	--------------------	-------------