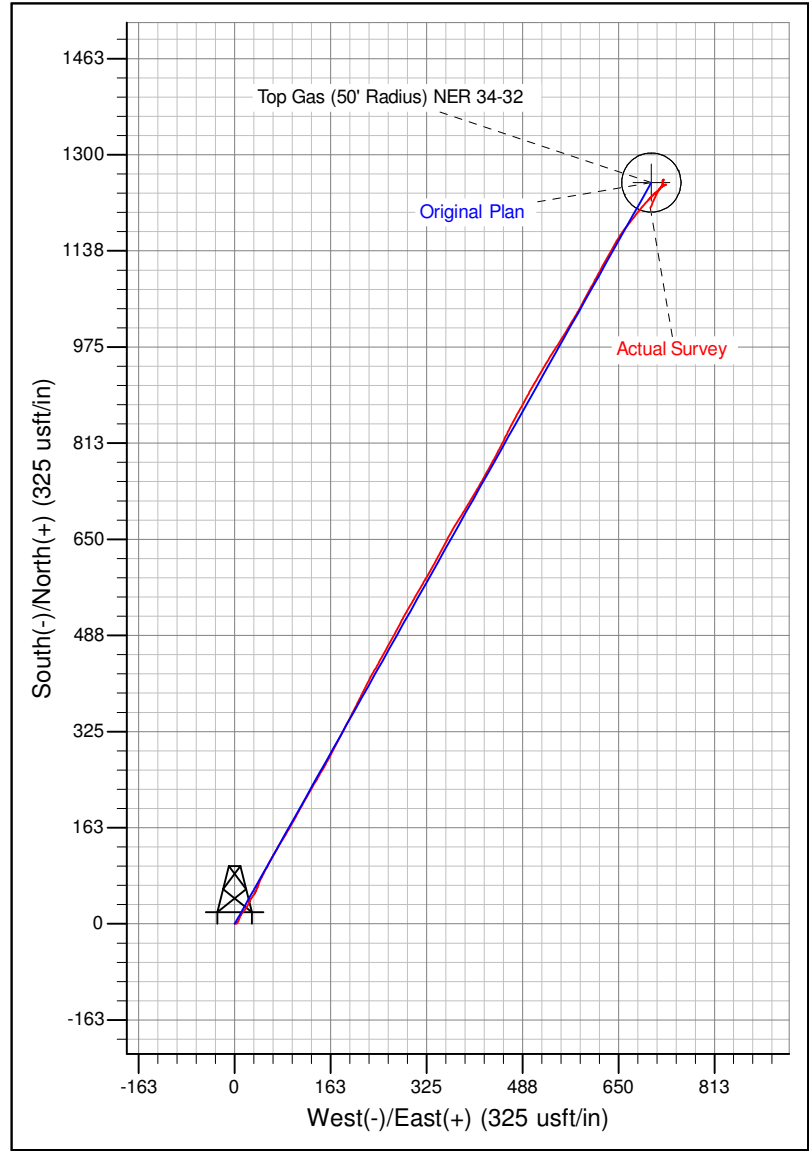
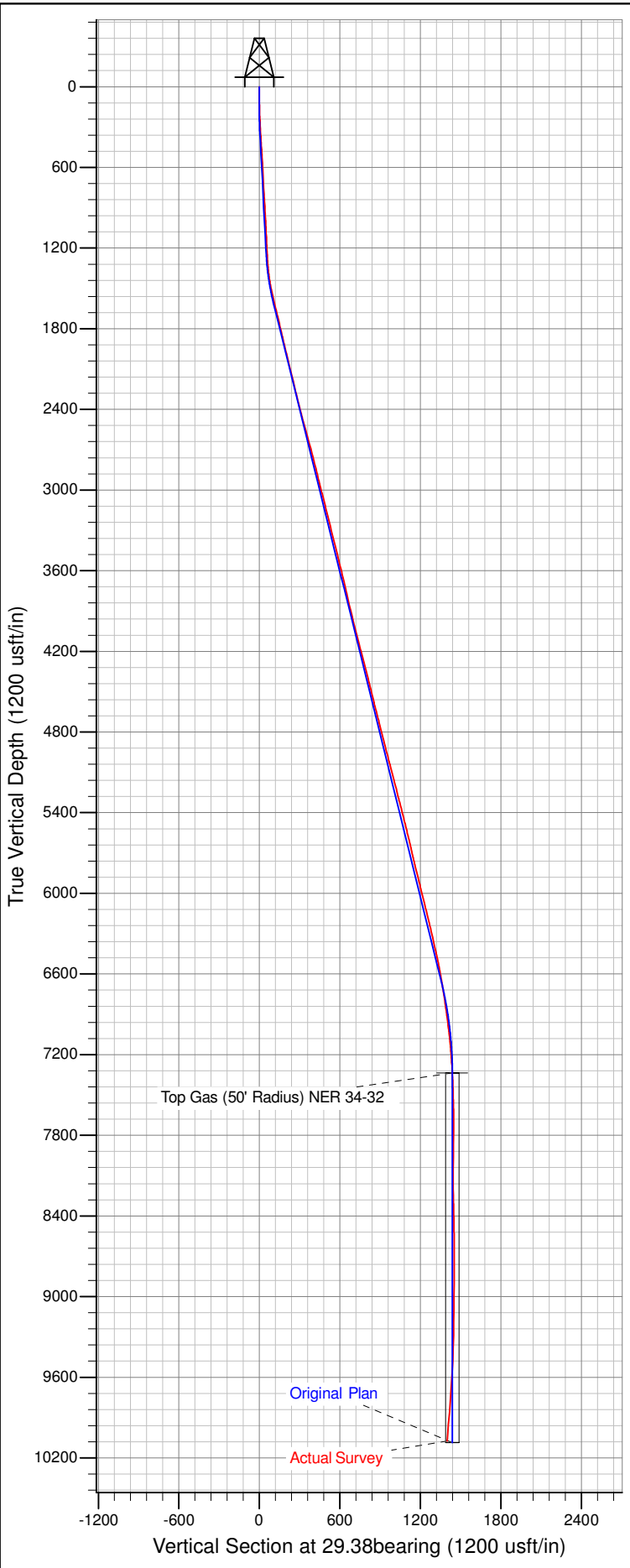




Well Name: NER 34-32
 Surface Location: Single Cellar RU 23-5 Pad
 North American Datum 1983 , US State Plane 1983 , Colorado Central Zone
 Ground Elevation: 7602.00

+N/-S	+E/-W	Northing	Easting	Latitude	Longitude	Slot
0.00	0.00	1606106.60000	2351136.00000	39.47500	-107.79886	B4

KELLY BUSHING @ 7628.00usft (Nabors 576 (26'))



Azimuths to True North
 Magnetic North: 9.87°

Magnetic Field
 Strength: 51942.9snT
 Dip Angle: 65.67°
 Date: 7/4/2014
 Model: IGRF2010