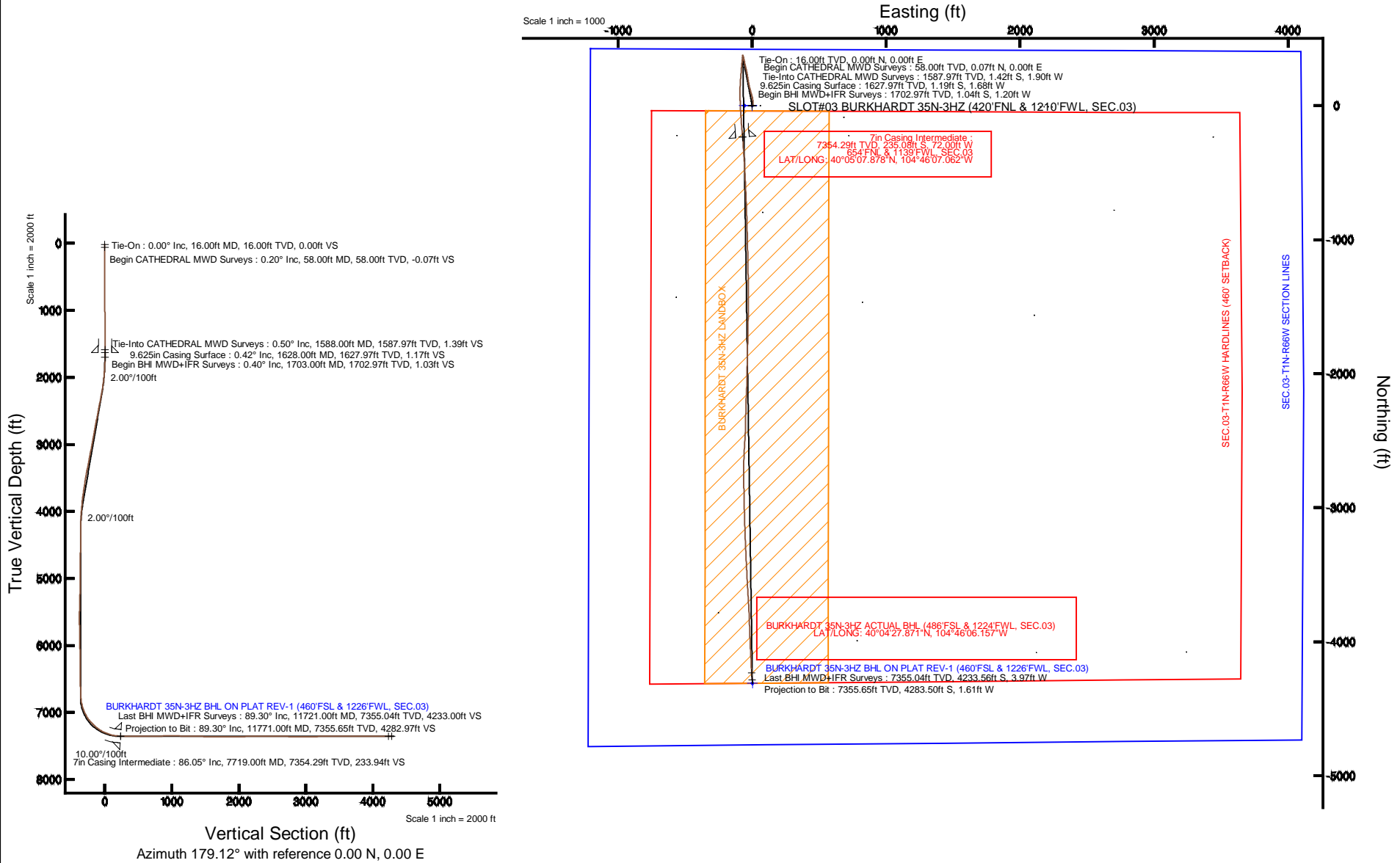


KERR-MCGEE OIL & GAS ONSHORE LP

Location: COLORADO Slot: SLOT#03 BURKHARDT 35N-3HZ (420'FNL & 1210'FWL, SEC.03)
 Field: WELD COUNTY (KERR MCGEE) Well: BURKHARDT 35N-3HZ
 Facility: SEC.03-T1N-R66W Wellbore: BURKHARDT 35N-3HZ PWB

Plot reference wellpath is BURKHARDT 35N-3HZ (REV-B.0) PWP

True vertical depths are referenced to XTREME 23 (16KB) (RKB)	Grid System: NAD83 / Lambert Colorado SP, Northern Zone (501), US feet
Measured depths are referenced to XTREME 23 (16KB) (RKB)	North Reference: True north
XTREME 23 (16KB) (RKB) to Mean Sea Level: 5035 feet	Scale: True distance
Mean Sea Level to Mud line (At Slot: SLOT#03 BURKHARDT 35N-3HZ (420'FNL & 1210'FWL, SEC.03)): 0 feet	Depths are in feet
Coordinates are in feet referenced to Slot	Created by: preccain on 11/18/2014



REFERENCE WELLPATH IDENTIFICATION			
Operator	KERR-MCGEE OIL & GAS ONSHORE LP	Slot	SLOT#03 BURKHARDT 35N-3HZ (420'FNL & 1210'FWL, SEC.03)
Area	COLORADO	Well	BURKHARDT 35N-3HZ
Field	WELD COUNTY (KERR MCGEE)	Wellbore	BURKHARDT 35N-3HZ AWB
Facility	SEC.03-T1N-R66W		

REPORT SETUP INFORMATION			
Projection System	NAD83 / Lambert Colorado SP, Northern Zone (501), US feet	Software System	WellArchitect® 4.0.0
North Reference	True	User	Precairn
Scale	0.999961	Report Generated	11/18/2014 at 12:18:26 PM
Convergence at slot	n/a	Database/Source file	WellArchitectDB/BURKHARDT_35N-3HZ_AWB.xml

WELLPATH LOCATION						
	Local coordinates		Grid coordinates		Geographic coordinates	
	North[ft]	East[ft]	Easting[US ft]	Northing[US ft]	Latitude	Longitude
Slot Location	-0.20	59.85	3204707.16	1275079.83	40°05'10.201"N	104°46'06.136"W
Facility Reference Pt			3204647.32	1275079.54	40°05'10.203"N	104°46'06.906"W
Field Reference Pt			3197771.84	1268891.29	40°04'09.600"N	104°47'36.000"W

WELLPATH DATUM			
Calculation method	Minimum curvature	XTREME 23 (16'KB) (RKB) to Facility Vertical Datum	5035.00ft
Horizontal Reference Pt	Slot	XTREME 23 (16'KB) (RKB) to Mean Sea Level	5035.00ft
Vertical Reference Pt	XTREME 23 (16'KB) (RKB)	XTREME 23 (16'KB) (RKB) to Mud Line at Slot (SLOT#03 BURKHARDT 35N-3HZ (420'FNL & 1210'FWL, SEC.03))	5035.00ft
MD Reference Pt	XTREME 23 (16'KB) (RKB)	Section Origin	N 0.00, E 0.00 ft
Field Vertical Reference	Mean Sea Level	Section Azimuth	179.12°

REFERENCE WELLPATH IDENTIFICATION			
Operator	KERR-MCGEE OIL & GAS ONSHORE LP	Slot	SLOT#03 BURKHARDT 35N-3HZ (420'FNL & 1210'FWL, SEC.03)
Area	COLORADO	Well	BURKHARDT 35N-3HZ
Field	WELD COUNTY (KERR MCGEE)	Wellbore	BURKHARDT 35N-3HZ AWB
Facility	SEC.03-T1N-R66W		

WELLPATH DATA (113 stations) † = interpolated/extrapolated station										
MD [ft]	Inclination [°]	Azimuth [°]	TVD [ft]	Vert Sect [ft]	North [ft]	East [ft]	Latitude	Longitude	DLS [°/100ft]	Comments
0.00†	0.000	0.400	0.00	0.00	0.00	0.00	40°05'10.201"N	104°46'06.136"W	0.00	
16.00	0.000	0.400	16.00	0.00	0.00	0.00	40°05'10.201"N	104°46'06.136"W	0.00	Tie-On
58.00	0.200	0.400	58.00	-0.07	0.07	0.00	40°05'10.202"N	104°46'06.136"W	0.48	Begin CATHEDRAL MWD Surveys
128.00	0.000	0.000	128.00	-0.20	0.20	0.00	40°05'10.203"N	104°46'06.136"W	0.29	
206.00	0.000	0.000	206.00	-0.20	0.20	0.00	40°05'10.203"N	104°46'06.136"W	0.00	
286.00	0.200	263.700	286.00	-0.18	0.18	-0.14	40°05'10.203"N	104°46'06.138"W	0.25	
366.00	0.000	0.000	366.00	-0.17	0.16	-0.28	40°05'10.203"N	104°46'06.140"W	0.25	
446.00	0.400	269.900	446.00	-0.17	0.16	-0.56	40°05'10.203"N	104°46'06.143"W	0.50	
526.00	0.300	298.400	526.00	-0.28	0.26	-1.02	40°05'10.204"N	104°46'06.149"W	0.25	
606.00	0.400	278.400	606.00	-0.43	0.40	-1.48	40°05'10.205"N	104°46'06.155"W	0.20	
686.00	0.400	270.100	685.99	-0.48	0.45	-2.03	40°05'10.205"N	104°46'06.162"W	0.07	
766.00	0.500	258.500	765.99	-0.42	0.38	-2.66	40°05'10.205"N	104°46'06.170"W	0.17	
846.00	0.000	0.000	845.99	-0.35	0.31	-3.00	40°05'10.204"N	104°46'06.175"W	0.62	
926.00	0.200	134.600	925.99	-0.25	0.21	-2.90	40°05'10.203"N	104°46'06.173"W	0.25	
1006.00	0.300	203.200	1005.99	0.04	-0.08	-2.88	40°05'10.200"N	104°46'06.173"W	0.37	
1086.00	0.500	211.200	1085.99	0.52	-0.57	-3.15	40°05'10.195"N	104°46'06.176"W	0.26	
1166.00	0.700	213.800	1165.98	1.22	-1.28	-3.60	40°05'10.188"N	104°46'06.182"W	0.25	
1246.00	0.300	114.400	1245.98	1.71	-1.77	-3.68	40°05'10.184"N	104°46'06.183"W	1.01	
1326.00	0.500	158.000	1325.98	2.13	-2.18	-3.36	40°05'10.179"N	104°46'06.179"W	0.44	
1406.00	0.300	86.300	1405.98	2.44	-2.49	-3.02	40°05'10.176"N	104°46'06.175"W	0.62	
1486.00	0.500	51.300	1485.98	2.22	-2.26	-2.54	40°05'10.179"N	104°46'06.169"W	0.38	
1566.00	0.700	30.100	1565.97	1.59	-1.62	-2.02	40°05'10.185"N	104°46'06.162"W	0.37	
1588.00	0.500	35.700	1587.97	1.39	-1.42	-1.90	40°05'10.187"N	104°46'06.160"W	0.95	Tie-Into CATHEDRAL MWD Surveys
1703.00	0.400	94.100	1702.97	1.03	-1.04	-1.20	40°05'10.191"N	104°46'06.151"W	0.39	Begin BHI MWD+IFR Surveys
1734.00	0.800	83.300	1733.97	1.01	-1.03	-0.88	40°05'10.191"N	104°46'06.147"W	1.34	
1826.00	3.200	24.200	1825.91	-1.38	1.39	0.81	40°05'10.215"N	104°46'06.126"W	3.12	
1918.00	4.300	24.100	1917.71	-6.83	6.88	3.27	40°05'10.269"N	104°46'06.094"W	1.20	
2011.00	6.300	9.000	2010.31	-15.02	15.10	5.49	40°05'10.350"N	104°46'06.065"W	2.60	
2102.00	8.000	359.100	2100.60	-26.27	26.37	6.18	40°05'10.462"N	104°46'06.057"W	2.30	
2194.00	9.500	350.500	2191.54	-40.18	40.26	4.82	40°05'10.599"N	104°46'06.074"W	2.16	
2287.00	10.900	346.300	2283.06	-56.34	56.37	1.47	40°05'10.758"N	104°46'06.117"W	1.70	
2380.00	11.700	347.400	2374.26	-74.15	74.12	-2.67	40°05'10.933"N	104°46'06.170"W	0.89	
2472.00	10.900	343.300	2464.48	-91.65	91.55	-7.20	40°05'11.106"N	104°46'06.229"W	1.23	
2564.00	11.700	344.400	2554.69	-109.05	108.87	-12.21	40°05'11.277"N	104°46'06.293"W	0.90	
2657.00	10.600	342.900	2645.94	-126.38	126.13	-17.26	40°05'11.447"N	104°46'06.358"W	1.22	
2748.00	11.000	349.100	2735.33	-142.97	142.65	-21.36	40°05'11.611"N	104°46'06.411"W	1.35	
2839.00	9.600	346.300	2824.86	-158.92	158.55	-24.80	40°05'11.768"N	104°46'06.455"W	1.63	
2932.00	10.900	351.300	2916.38	-175.19	174.78	-27.97	40°05'11.928"N	104°46'06.496"W	1.69	
3025.00	11.200	351.000	3007.65	-192.84	192.39	-30.71	40°05'12.102"N	104°46'06.531"W	0.33	
3118.00	10.600	350.800	3098.97	-210.25	209.76	-33.49	40°05'12.274"N	104°46'06.567"W	0.65	
3209.00	11.500	350.700	3188.29	-227.50	226.97	-36.30	40°05'12.444"N	104°46'06.603"W	0.99	
3302.00	10.400	348.500	3279.59	-244.92	244.35	-39.47	40°05'12.616"N	104°46'06.644"W	1.27	
3387.00	11.700	348.100	3363.01	-260.93	260.30	-42.78	40°05'12.773"N	104°46'06.686"W	1.53	
3472.00	10.600	347.300	3446.41	-277.04	276.36	-46.27	40°05'12.932"N	104°46'06.731"W	1.31	
3559.00	9.700	343.400	3532.05	-291.93	291.19	-50.12	40°05'13.079"N	104°46'06.781"W	1.30	

Actual Wellpath Report

BURKHARDT 35N-3HZ AWP

Page 3 of 6

REFERENCE WELLPATH IDENTIFICATION			
Operator	KERR-MCGEE OIL & GAS ONSHORE LP	Slot	SLOT#03 BURKHARDT 35N-3HZ (420'FNL & 1210'FWL, SEC.03)
Area	COLORADO	Well	BURKHARDT 35N-3HZ
Field	WELD COUNTY (KERR MCGEE)	Wellbore	BURKHARDT 35N-3HZ AWB
Facility	SEC.03-T1N-R66W		

WELLPATH DATA (113 stations) † = interpolated/extrapolated station										
MD [ft]	Inclination [°]	Azimuth [°]	TVD [ft]	Vert Sect [ft]	North [ft]	East [ft]	Latitude	Longitude	DLS [°/100ft]	Comments
3646.00	8.800	346.500	3617.91	-305.48	304.68	-53.77	40°05'13.212"N	104°46'06.828"W	1.18	
3735.00	8.300	352.600	3705.93	-318.50	317.67	-56.19	40°05'13.340"N	104°46'06.859"W	1.16	
3821.00	7.300	349.900	3791.13	-330.06	329.21	-57.95	40°05'13.454"N	104°46'06.882"W	1.24	
3906.00	6.200	345.700	3875.54	-339.86	338.97	-60.03	40°05'13.551"N	104°46'06.908"W	1.42	
3991.00	4.700	343.700	3960.15	-347.68	346.76	-62.14	40°05'13.628"N	104°46'06.935"W	1.78	
4078.00	3.700	354.600	4046.92	-353.91	352.98	-63.40	40°05'13.689"N	104°46'06.952"W	1.47	
4165.00	1.600	346.000	4133.82	-357.90	356.95	-63.96	40°05'13.728"N	104°46'06.959"W	2.45	
4250.00	1.400	339.100	4218.79	-360.03	359.08	-64.62	40°05'13.749"N	104°46'06.967"W	0.32	
4335.00	0.400	236.600	4303.79	-360.84	359.88	-65.24	40°05'13.757"N	104°46'06.975"W	1.81	
4760.00	2.200	352.500	4728.69	-368.15	367.15	-67.54	40°05'13.829"N	104°46'07.005"W	0.57	
4845.00	0.500	38.500	4813.66	-370.06	369.06	-67.52	40°05'13.848"N	104°46'07.005"W	2.22	
4931.00	0.800	216.900	4899.66	-369.87	368.88	-67.65	40°05'13.846"N	104°46'07.006"W	1.51	
5359.00	1.700	352.200	5327.60	-373.82	372.78	-70.31	40°05'13.885"N	104°46'07.041"W	0.55	
5445.00	1.800	339.700	5413.56	-376.36	375.31	-70.95	40°05'13.910"N	104°46'07.049"W	0.46	
5533.00	1.700	341.900	5501.52	-378.91	377.84	-71.83	40°05'13.935"N	104°46'07.060"W	0.14	
5618.00	0.100	158.500	5586.51	-380.04	378.97	-72.20	40°05'13.946"N	104°46'07.065"W	2.12	
5706.00	1.400	181.900	5674.50	-378.90	377.83	-72.20	40°05'13.935"N	104°46'07.065"W	1.49	
5791.00	1.100	178.500	5759.48	-377.04	375.97	-72.22	40°05'13.916"N	104°46'07.065"W	0.36	
5877.00	0.500	154.400	5845.47	-375.88	374.81	-72.03	40°05'13.905"N	104°46'07.063"W	0.79	
5962.00	1.500	189.300	5930.46	-374.44	373.38	-72.05	40°05'13.891"N	104°46'07.063"W	1.33	
6049.00	1.300	174.700	6017.43	-372.34	371.27	-72.15	40°05'13.870"N	104°46'07.064"W	0.47	
6136.00	0.900	162.000	6104.42	-370.70	369.64	-71.84	40°05'13.854"N	104°46'07.060"W	0.54	
6224.00	0.600	149.100	6192.41	-369.64	368.59	-71.39	40°05'13.843"N	104°46'07.055"W	0.39	
6311.00	1.200	169.900	6279.40	-368.35	367.30	-71.00	40°05'13.831"N	104°46'07.049"W	0.77	
6483.00	0.600	152.900	6451.38	-365.76	364.72	-70.27	40°05'13.805"N	104°46'07.040"W	0.38	
6655.00	0.300	165.200	6623.37	-364.52	363.49	-69.75	40°05'13.793"N	104°46'07.033"W	0.18	
6740.00	2.000	190.700	6708.35	-362.85	361.81	-69.97	40°05'13.777"N	104°46'07.036"W	2.04	
6827.00	5.100	184.200	6795.17	-357.51	356.47	-70.53	40°05'13.724"N	104°46'07.043"W	3.59	
6914.00	13.800	189.200	6880.91	-343.41	342.34	-72.48	40°05'13.584"N	104°46'07.069"W	10.04	
6999.00	21.000	187.700	6961.97	-318.34	317.20	-76.14	40°05'13.336"N	104°46'07.116"W	8.49	
7085.00	28.000	183.900	7040.18	-282.94	281.75	-79.59	40°05'12.985"N	104°46'07.160"W	8.34	
7170.00	36.400	185.400	7112.05	-237.91	236.65	-83.32	40°05'12.540"N	104°46'07.208"W	9.93	
7258.00	47.200	184.400	7177.55	-179.63	178.29	-88.27	40°05'11.963"N	104°46'07.272"W	12.30	
7343.00	52.500	180.500	7232.35	-114.81	113.43	-90.96	40°05'11.322"N	104°46'07.306"W	7.15	
7430.00	60.200	178.300	7280.53	-42.45	41.07	-90.14	40°05'10.607"N	104°46'07.296"W	9.10	
7515.00	70.000	176.500	7316.27	34.51	-35.85	-86.60	40°05'09.847"N	104°46'07.250"W	11.69	
7600.00	79.100	176.000	7338.89	116.25	-117.52	-81.24	40°05'09.040"N	104°46'07.181"W	10.72	
7674.00	83.400	175.300	7350.15	189.24	-190.43	-75.69	40°05'08.319"N	104°46'07.110"W	5.89	
7719.00†	86.050	175.250	7354.29	233.94	-235.08	-72.00	40°05'07.878"N	104°46'07.062"W	5.89	7" Casing Point
7764.00	88.700	175.200	7356.35	278.79	-279.87	-68.26	40°05'07.435"N	104°46'07.014"W	5.89	
7849.00	89.800	176.400	7357.46	363.64	-364.63	-62.03	40°05'06.598"N	104°46'06.934"W	1.92	
7936.00	90.300	177.300	7357.38	450.57	-451.50	-57.25	40°05'05.739"N	104°46'06.873"W	1.18	
8106.00	90.500	177.100	7356.20	620.47	-621.29	-48.95	40°05'04.061"N	104°46'06.766"W	0.17	
8276.00	91.500	178.100	7353.23	790.38	-791.11	-41.83	40°05'02.383"N	104°46'06.674"W	0.83	
8533.00	89.500	178.700	7350.99	1047.33	-1047.99	-34.66	40°04'59.845"N	104°46'06.582"W	0.81	

REFERENCE WELLPATH IDENTIFICATION			
Operator	KERR-MCGEE OIL & GAS ONSHORE LP	Slot	SLOT#03 BURKHARDT 35N-3HZ (420'FNL & 1210'FWL, SEC.03)
Area	COLORADO	Well	BURKHARDT 35N-3HZ
Field	WELD COUNTY (KERR MCGEE)	Wellbore	BURKHARDT 35N-3HZ AWB
Facility	SEC.03-T1N-R66W		

WELLPATH DATA (113 stations)										
MD [ft]	Inclination [°]	Azimuth [°]	TVD [ft]	Vert Sect [ft]	North [ft]	East [ft]	Latitude	Longitude	DLS [°/100ft]	Comments
8790.00	88.700	179.100	7355.02	1304.30	-1304.91	-29.72	40°04'57.306"N	104°46'06.518"W	0.35	
8964.00	88.800	180.500	7358.82	1478.24	-1478.86	-29.12	40°04'55.587"N	104°46'06.511"W	0.81	
9134.00	88.800	180.900	7362.38	1648.14	-1648.81	-31.19	40°04'53.907"N	104°46'06.537"W	0.24	
9304.00	90.600	181.500	7363.27	1818.01	-1818.76	-34.75	40°04'52.228"N	104°46'06.583"W	1.12	
9477.00	91.000	181.000	7360.85	1990.88	-1991.71	-38.53	40°04'50.519"N	104°46'06.632"W	0.37	
9651.00	91.800	182.300	7356.60	2164.65	-2165.58	-43.53	40°04'48.800"N	104°46'06.696"W	0.88	
9829.00	89.800	181.000	7354.12	2342.45	-2343.47	-48.66	40°04'47.042"N	104°46'06.762"W	1.34	
10005.00	90.200	183.600	7354.12	2518.16	-2519.31	-55.72	40°04'45.305"N	104°46'06.853"W	1.49	
10091.00	88.900	182.700	7354.79	2603.94	-2605.18	-60.45	40°04'44.456"N	104°46'06.914"W	1.84	
10176.00	87.900	180.800	7357.17	2688.81	-2690.10	-63.04	40°04'43.617"N	104°46'06.947"W	2.53	
10262.00	88.500	179.500	7359.87	2774.75	-2776.06	-63.27	40°04'42.768"N	104°46'06.950"W	1.66	
10349.00	89.300	178.800	7361.54	2861.74	-2863.03	-61.98	40°04'41.908"N	104°46'06.933"W	1.22	
10434.00	89.100	179.100	7362.72	2946.73	-2948.01	-60.42	40°04'41.068"N	104°46'06.913"W	0.42	
10519.00	91.100	178.000	7362.58	3031.72	-3032.97	-58.27	40°04'40.229"N	104°46'06.886"W	2.69	
10689.00	91.900	178.300	7358.13	3201.63	-3202.83	-52.78	40°04'38.550"N	104°46'06.815"W	0.50	
10776.00	90.300	177.300	7356.46	3288.59	-3289.74	-49.44	40°04'37.691"N	104°46'06.772"W	2.17	
10946.00	90.500	177.300	7355.27	3458.50	-3459.55	-41.43	40°04'36.013"N	104°46'06.669"W	0.12	
11117.00	89.200	176.200	7355.72	3629.35	-3630.27	-31.74	40°04'34.326"N	104°46'06.544"W	1.00	
11289.00	90.000	177.700	7356.92	3801.21	-3802.01	-22.59	40°04'32.629"N	104°46'06.427"W	0.99	
11461.00	91.600	178.100	7354.52	3973.15	-3973.87	-16.29	40°04'30.930"N	104°46'06.346"W	0.96	
11548.00	89.700	177.000	7353.53	4060.11	-4060.78	-12.57	40°04'30.072"N	104°46'06.298"W	2.52	
11721.00	89.300	177.300	7355.04	4233.00	-4233.56	-3.97	40°04'28.364"N	104°46'06.187"W	0.29	Last BHI MWD+IFR Surveys
11771.00	89.300	177.300	7355.65	4282.97	-4283.50	-1.61	40°04'27.871"N	104°46'06.157"W	0.00	Projection to Bit

HOLE & CASING SECTIONS - Ref Wellbore: BURKHARDT 35N-3HZ AWB Ref Wellpath: BURKHARDT 35N-3HZ AWP										
String/Diameter	Start MD [ft]	End MD [ft]	Interval [ft]	Start TVD [ft]	End TVD [ft]	Start N/S [ft]	Start E/W [ft]	End N/S [ft]	End E/W [ft]	
13.5in Open Hole	16.00	1638.00	1622.00	16.00	1637.97	0.00	0.00	-1.15	-1.62	
9.625in Casing Surface	16.00	1628.00	1612.00	16.00	1627.97	0.00	0.00	-1.19	-1.68	
8.75in Open Hole	1638.00	7726.00	6088.00	1637.97	7354.74	-1.15	-1.62	-242.04	-71.42	
7in Casing Intermediate	16.00	7719.00	7703.00	16.00	7354.29	0.00	0.00	-235.08	-72.00	
6.125in Open Hole	7726.00	11771.00	4045.00	7354.74	7355.65	-242.04	-71.42	-4283.50	-1.61	

REFERENCE WELLPATH IDENTIFICATION			
Operator	KERR-MCGEE OIL & GAS ONSHORE LP	Slot	SLOT#03 BURKHARDT 35N-3HZ (420'FNL & 1210'FWL, SEC.03)
Area	COLORADO	Well	BURKHARDT 35N-3HZ
Field	WELD COUNTY (KERR MCGEE)	Wellbore	BURKHARDT 35N-3HZ AWB
Facility	SEC.03-T1N-R66W		

TARGETS									
Name	MD [ft]	TVD [ft]	North [ft]	East [ft]	Grid East [US ft]	Grid North [US ft]	Latitude	Longitude	Shape
SEC.03-T1N-R66W SECTION LINES		-41.00	0.20	-59.85	3204647.31	1275079.54	40°05'10.203"N	104°46'06.906"W	polygon
BURKHARDT 35N-3HZ LANDBOX		7279.00	0.00	0.00	3204707.16	1275079.83	40°05'10.201"N	104°46'06.136"W	polygon
SEC.03-T1N-R66W HARDLINES (460' SETBACK)		7299.00	0.20	-59.85	3204647.31	1275079.54	40°05'10.203"N	104°46'06.906"W	polygon
BURKHARDT 35N-3HZ BHL ON PLAT REV-1 (460'FSL & 1226'FWL, SEC.03)		7355.00	-4309.92	1.43	3204744.15	1270770.25	40°04'27.610"N	104°46'06.118"W	point

WELLPATH COMPOSITION - Ref Wellbore: BURKHARDT 35N-3HZ AWB Ref Wellpath: BURKHARDT 35N-3HZ AWP				
Start MD [ft]	End MD [ft]	Positional Uncertainty Model	Log Name/Comment	Wellbore
16.00	1588.00	ISCWSA MWD, Rev. 2 (Standard)	CATHEDRAL ENERGY MWD SURVEYS <58-1588>	BURKHARDT 35N-3HZ AWB
1588.00	7674.00	NaviTrak (MAGCORR,IFR)	BHI MWD+IFR SURVEYS 8 3/4" HOLE <1703-7674>	BURKHARDT 35N-3HZ AWB
7674.00	11721.00	NaviTrak (MAGCORR,IFR)	BHI MWD+IFR SURVEYS 6 1/8" HOLE <7764-11721>	BURKHARDT 35N-3HZ AWB
11721.00	11771.00	Blind Drilling (std)	Projection to bit	BURKHARDT 35N-3HZ AWB

REFERENCE WELLPATH IDENTIFICATION			
Operator	KERR-MCGEE OIL & GAS ONSHORE LP	Slot	SLOT#03 BURKHARDT 35N-3HZ (420'FNL & 1210'FWL, SEC.03)
Area	COLORADO	Well	BURKHARDT 35N-3HZ
Field	WELD COUNTY (KERR MCGEE)	Wellbore	BURKHARDT 35N-3HZ AWB
Facility	SEC.03-T1N-R66W		

WELLPATH COMMENTS				
MD [ft]	Inclination [°]	Azimuth [°]	TVD [ft]	Comment
16.00	0.000	0.400	16.00	Tie-On
58.00	0.200	0.400	58.00	Begin CATHEDRAL MWD Surveys
1588.00	0.500	35.700	1587.97	Tie-Into CATHEDRAL MWD Surveys
1703.00	0.400	94.100	1702.97	Begin BHI MWD+IFR Surveys
7719.00	86.050	175.250	7354.29	7" Casing Point
11721.00	89.300	177.300	7355.04	Last BHI MWD+IFR Surveys
11771.00	89.300	177.300	7355.65	Projection to Bit