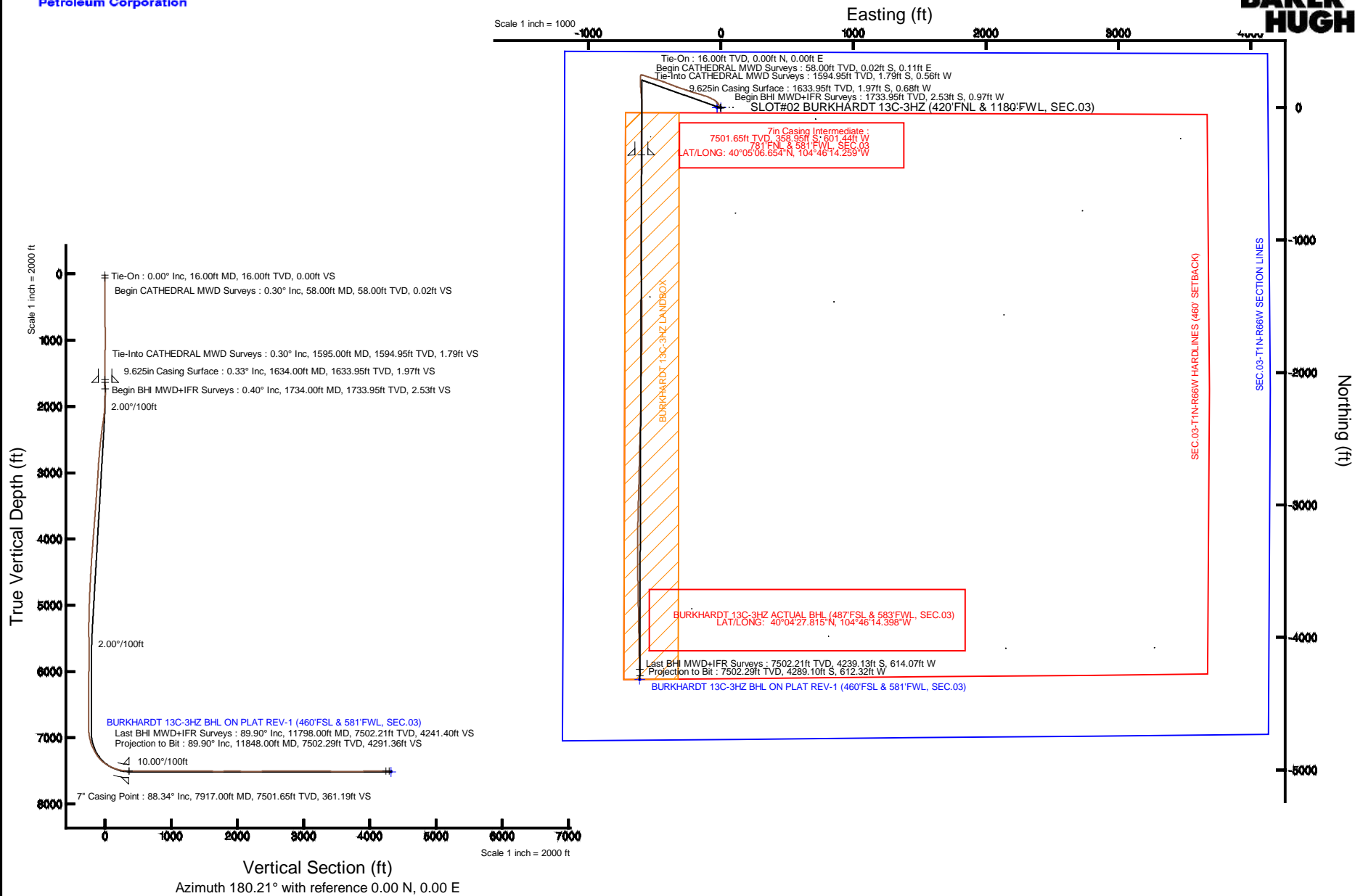


KERR-MCGEE OIL & GAS ONSHORE LP

Location: COLORADO Slot: SLOT#02 BURKHARDT 13C-3HZ (420'FNL & 1180'FWL, SEC.03)
 Field: WELD COUNTY (KERR MCGEE) Well: BURKHARDT 13C-3HZ
 Facility: SEC.03-T1N-R66W Wellbore: BURKHARDT 13C-3HZ PWB

Plot reference wellpath is BURKHARDT 13C-3HZ (REV-C.0) PWP

True vertical depths are referenced to XTREME 23 (16KB) (RKB)	Grid System: NAD83 / Lambert Colorado SP, Northern Zone (501), US feet
Measured depths are referenced to XTREME 23 (16KB) (RKB)	North Reference: True north
XTREME 23 (16KB) (RKB) to Mean Sea Level: 5035 feet	Scale: True distance
Mean Sea Level to Mud line (At Slot: SLOT#02 BURKHARDT 13C-3HZ (420'FNL & 1180'FWL, SEC.03)): 0 feet	Depths are in feet
Coordinates are in feet referenced to Slot	Created by: precain on 11/18/2014



REFERENCE WELLPATH IDENTIFICATION			
Operator	KERR-MCGEE OIL & GAS ONSHORE LP	Slot	SLOT#02 BURKHARDT 13C-3HZ (420'FNL & 1180'FWL, SEC.03)
Area	COLORADO	Well	BURKHARDT 13C-3HZ
Field	WELD COUNTY (KERR MCGEE)	Wellbore	BURKHARDT 13C-3HZ AWB
Facility	SEC.03-T1N-R66W		

REPORT SETUP INFORMATION			
Projection System	NAD83 / Lambert Colorado SP, Northern Zone (501), US feet	Software System	WellArchitect® 4.0.0
North Reference	True	User	Precaín
Scale	0.999961	Report Generated	11/18/2014 at 12:30:36 PM
Convergence at slot	n/a	Database/Source file	WellArchitectDB/BURKHARDT_13C-3HZ_AWB.xml

WELLPATH LOCATION						
	Local coordinates		Grid coordinates		Geographic coordinates	
	North[ft]	East[ft]	Easting[US ft]	Northing[US ft]	Latitude	Longitude
Slot Location	-0.20	29.92	3204677.24	1275079.59	40°05'10.201"N	104°46'06.521"W
Facility Reference Pt			3204647.32	1275079.54	40°05'10.203"N	104°46'06.906"W
Field Reference Pt			3197771.84	1268891.29	40°04'09.600"N	104°47'36.000"W

WELLPATH DATUM			
Calculation method	Minimum curvature	XTREME 23 (16'KB) (RKB) to Facility Vertical Datum	5035.00ft
Horizontal Reference Pt	Slot	XTREME 23 (16'KB) (RKB) to Mean Sea Level	5035.00ft
Vertical Reference Pt	XTREME 23 (16'KB) (RKB)	XTREME 23 (16'KB) (RKB) to Mud Line at Slot (SLOT#02 BURKHARDT 13C-3HZ (420'FNL & 1180'FWL, SEC.03))	5035.00ft
MD Reference Pt	XTREME 23 (16'KB) (RKB)	Section Origin	N 0.00, E 0.00 ft
Field Vertical Reference	Mean Sea Level	Section Azimuth	180.21°

REFERENCE WELLPATH IDENTIFICATION			
Operator	KERR-MCGEE OIL & GAS ONSHORE LP	Slot	SLOT#02 BURKHARDT 13C-3HZ (420'FNL & 1180'FWL, SEC.03)
Area	COLORADO	Well	BURKHARDT 13C-3HZ
Field	WELD COUNTY (KERR MCGEE)	Wellbore	BURKHARDT 13C-3HZ AWB
Facility	SEC.03-T1N-R66W		

WELLPATH DATA (117 stations) † = interpolated/extrapolated station										
MD [ft]	Inclination [°]	Azimuth [°]	TVD [ft]	Vert Sect [ft]	North [ft]	East [ft]	Latitude	Longitude	DLS [°/100ft]	Comments
0.00†	0.000	99.500	0.00	0.00	0.00	0.00	40°05'10.201"N	104°46'06.521"W	0.00	
16.00	0.000	99.500	16.00	0.00	0.00	0.00	40°05'10.201"N	104°46'06.521"W	0.00	Tie-On
58.00	0.300	99.500	58.00	0.02	-0.02	0.11	40°05'10.201"N	104°46'06.520"W	0.71	Begin CATHEDRAL MWD Surveys
128.00	0.300	156.600	128.00	0.22	-0.22	0.36	40°05'10.199"N	104°46'06.516"W	0.41	
206.00	0.100	112.600	206.00	0.43	-0.43	0.51	40°05'10.197"N	104°46'06.514"W	0.31	
286.00	0.100	4.100	286.00	0.39	-0.39	0.58	40°05'10.197"N	104°46'06.514"W	0.20	
366.00	0.300	245.000	366.00	0.40	-0.41	0.39	40°05'10.197"N	104°46'06.516"W	0.45	
446.00	0.100	228.400	446.00	0.54	-0.54	0.15	40°05'10.196"N	104°46'06.519"W	0.26	
526.00	0.200	233.400	526.00	0.67	-0.67	-0.02	40°05'10.194"N	104°46'06.521"W	0.13	
606.00	0.300	138.300	606.00	0.91	-0.91	0.01	40°05'10.192"N	104°46'06.521"W	0.47	
686.00	0.500	170.600	685.99	1.41	-1.41	0.21	40°05'10.187"N	104°46'06.518"W	0.37	
766.00	0.500	169.200	765.99	2.10	-2.10	0.33	40°05'10.180"N	104°46'06.517"W	0.02	
846.00	0.700	122.400	845.99	2.70	-2.70	0.81	40°05'10.174"N	104°46'06.511"W	0.64	
926.00	0.600	118.900	925.98	3.16	-3.17	1.59	40°05'10.170"N	104°46'06.501"W	0.13	
1006.00	0.200	79.200	1005.98	3.34	-3.34	2.09	40°05'10.168"N	104°46'06.494"W	0.58	
1086.00	0.500	318.000	1085.98	3.05	-3.06	1.99	40°05'10.171"N	104°46'06.495"W	0.78	
1166.00	1.100	337.500	1165.97	2.08	-2.09	1.47	40°05'10.180"N	104°46'06.502"W	0.81	
1246.00	0.700	7.100	1245.96	0.89	-0.89	1.23	40°05'10.192"N	104°46'06.505"W	0.75	
1326.00	0.200	285.700	1325.96	0.37	-0.37	1.16	40°05'10.197"N	104°46'06.506"W	0.87	
1406.00	0.500	240.600	1405.96	0.50	-0.51	0.72	40°05'10.196"N	104°46'06.512"W	0.48	
1486.00	0.600	219.500	1485.95	1.00	-1.00	0.15	40°05'10.191"N	104°46'06.519"W	0.28	
1566.00	0.600	224.500	1565.95	1.62	-1.62	-0.41	40°05'10.185"N	104°46'06.526"W	0.07	
1595.00	0.300	217.300	1594.95	1.79	-1.79	-0.56	40°05'10.183"N	104°46'06.528"W	1.05	Tie-Into CATHEDRAL MWD Surveys
1734.00	0.400	202.600	1733.95	2.53	-2.53	-0.97	40°05'10.176"N	104°46'06.533"W	0.10	Begin BHI MWD+IFR Surveys
1826.00	1.000	274.400	1825.94	2.77	-2.76	-1.89	40°05'10.174"N	104°46'06.545"W	1.04	
1918.00	2.800	315.300	1917.89	1.12	-1.10	-4.27	40°05'10.190"N	104°46'06.576"W	2.33	
2011.00	4.700	320.600	2010.69	-3.42	3.46	-8.29	40°05'10.235"N	104°46'06.628"W	2.07	
2102.00	7.100	335.300	2101.20	-11.40	11.45	-13.01	40°05'10.314"N	104°46'06.688"W	3.10	
2194.00	9.000	327.600	2192.29	-22.62	22.69	-19.24	40°05'10.425"N	104°46'06.769"W	2.37	
2287.00	11.100	322.000	2283.86	-35.78	35.89	-28.65	40°05'10.556"N	104°46'06.890"W	2.49	
2380.00	12.000	308.000	2375.00	-48.74	48.90	-41.78	40°05'10.684"N	104°46'07.059"W	3.16	
2472.00	12.500	299.700	2464.91	-59.50	59.72	-57.97	40°05'10.791"N	104°46'07.267"W	1.99	
2564.00	13.900	296.800	2554.48	-69.35	69.64	-76.48	40°05'10.889"N	104°46'07.505"W	1.68	
2657.00	15.200	291.300	2644.50	-78.74	79.10	-97.81	40°05'10.983"N	104°46'07.779"W	2.04	
2748.00	14.100	287.600	2732.54	-86.34	86.79	-119.50	40°05'11.059"N	104°46'08.058"W	1.59	
2839.00	14.900	287.800	2820.64	-93.19	93.71	-141.20	40°05'11.127"N	104°46'08.338"W	0.88	
3025.00	12.600	285.200	3001.30	-105.66	106.35	-183.55	40°05'11.252"N	104°46'08.883"W	1.28	
3209.00	12.900	288.100	3180.77	-117.16	117.99	-222.44	40°05'11.367"N	104°46'09.383"W	0.38	
3387.00	13.000	289.300	3354.24	-129.81	130.78	-260.23	40°05'11.493"N	104°46'09.869"W	0.16	
3558.00	13.600	288.100	3520.65	-142.27	143.38	-297.49	40°05'11.618"N	104°46'10.348"W	0.39	
3644.00	12.200	287.700	3604.48	-148.11	149.29	-315.76	40°05'11.676"N	104°46'10.583"W	1.63	
3731.00	12.600	291.200	3689.45	-154.27	155.51	-333.36	40°05'11.738"N	104°46'10.810"W	0.98	
3817.00	12.600	288.800	3773.38	-160.62	161.93	-350.99	40°05'11.801"N	104°46'11.037"W	0.61	
3902.00	12.500	292.400	3856.35	-167.04	168.42	-368.27	40°05'11.865"N	104°46'11.259"W	0.93	
3987.00	12.500	289.800	3939.34	-173.60	175.04	-385.43	40°05'11.931"N	104°46'11.480"W	0.66	

REFERENCE WELLPATH IDENTIFICATION			
Operator	KERR-MCGEE OIL & GAS ONSHORE LP	Slot	SLOT#02 BURKHARDT 13C-3HZ (420'FNL & 1180'FWL, SEC.03)
Area	COLORADO	Well	BURKHARDT 13C-3HZ
Field	WELD COUNTY (KERR MCGEE)	Wellbore	BURKHARDT 13C-3HZ AWB
Facility	SEC.03-T1N-R66W		

WELLPATH DATA (117 stations) † = interpolated/extrapolated station										
MD [ft]	Inclination [°]	Azimuth [°]	TVD [ft]	Vert Sect [ft]	North [ft]	East [ft]	Latitude	Longitude	DLS [°/100ft]	Comments
4074.00	12.400	291.900	4024.29	-180.21	181.72	-402.95	40°05'11.997"N	104°46'11.705"W	0.53	
4161.00	12.300	289.500	4109.28	-186.72	188.29	-420.36	40°05'12.062"N	104°46'11.929"W	0.60	
4246.00	13.200	290.800	4192.18	-193.12	194.76	-437.96	40°05'12.126"N	104°46'12.156"W	1.11	
4331.00	11.700	290.300	4275.18	-199.50	201.20	-455.12	40°05'12.189"N	104°46'12.377"W	1.77	
4417.00	13.000	285.700	4359.19	-205.08	206.84	-472.61	40°05'12.245"N	104°46'12.602"W	1.89	
4501.00	12.300	286.100	4441.15	-210.05	211.88	-490.30	40°05'12.295"N	104°46'12.829"W	0.84	
4586.00	10.600	286.700	4524.46	-214.74	216.64	-506.49	40°05'12.342"N	104°46'13.037"W	2.00	
4671.00	10.800	287.300	4607.98	-219.30	221.25	-521.58	40°05'12.387"N	104°46'13.232"W	0.27	
4756.00	9.700	288.700	4691.62	-223.91	225.92	-535.97	40°05'12.433"N	104°46'13.417"W	1.33	
4842.00	8.700	289.100	4776.51	-228.32	230.37	-548.98	40°05'12.477"N	104°46'13.584"W	1.17	
4927.00	8.200	285.900	4860.59	-232.04	234.13	-560.88	40°05'12.515"N	104°46'13.737"W	0.81	
5012.00	6.700	287.300	4944.87	-235.13	237.27	-571.45	40°05'12.546"N	104°46'13.873"W	1.78	
5096.00	6.300	286.700	5028.33	-237.88	240.05	-580.54	40°05'12.573"N	104°46'13.990"W	0.48	
5186.00	4.200	287.600	5117.95	-240.27	242.46	-588.41	40°05'12.597"N	104°46'14.091"W	2.34	
5271.00	2.800	298.900	5202.79	-242.19	244.41	-593.20	40°05'12.616"N	104°46'14.153"W	1.83	
5356.00	1.100	298.300	5287.74	-243.57	245.80	-595.73	40°05'12.630"N	104°46'14.186"W	2.00	
5441.00	0.500	230.900	5372.73	-243.72	245.95	-596.74	40°05'12.631"N	104°46'14.199"W	1.20	
5699.00	0.800	258.700	5630.71	-242.65	244.89	-599.38	40°05'12.621"N	104°46'14.233"W	0.17	
5959.00	0.600	292.200	5890.69	-242.80	245.05	-602.42	40°05'12.623"N	104°46'14.272"W	0.17	
6216.00	0.600	283.600	6147.68	-243.61	245.87	-604.97	40°05'12.631"N	104°46'14.305"W	0.04	
6472.00	0.200	5.500	6403.67	-244.37	246.63	-606.23	40°05'12.638"N	104°46'14.321"W	0.24	
6903.00	0.300	353.200	6834.67	-246.24	248.50	-606.29	40°05'12.657"N	104°46'14.322"W	0.03	
6988.00	3.900	182.500	6919.61	-243.57	245.83	-606.45	40°05'12.630"N	104°46'14.324"W	4.94	
7073.00	11.800	181.400	7003.75	-231.97	234.24	-606.79	40°05'12.516"N	104°46'14.328"W	9.30	
7159.00	20.200	181.500	7086.34	-208.29	210.56	-607.39	40°05'12.282"N	104°46'14.336"W	9.77	
7244.00	24.300	179.400	7165.00	-176.12	178.39	-607.59	40°05'11.964"N	104°46'14.338"W	4.91	
7331.00	31.600	175.600	7241.80	-135.44	137.71	-605.65	40°05'11.562"N	104°46'14.313"W	8.63	
7416.00	41.000	174.700	7310.23	-85.38	87.63	-601.36	40°05'11.067"N	104°46'14.258"W	11.08	
7501.00	50.200	177.500	7369.64	-24.87	27.11	-597.35	40°05'10.469"N	104°46'14.206"W	11.07	
7587.00	60.400	180.800	7418.55	45.71	-43.48	-596.43	40°05'09.771"N	104°46'14.195"W	12.27	
7674.00	68.400	181.900	7456.11	124.09	-121.85	-598.30	40°05'08.997"N	104°46'14.219"W	9.27	
7759.00	75.200	181.000	7482.64	204.77	-202.53	-600.33	40°05'08.200"N	104°46'14.245"W	8.06	
7846.00	84.400	180.500	7498.03	290.30	-288.05	-601.44	40°05'07.354"N	104°46'14.259"W	10.59	
7880.00	87.700	179.900	7500.37	324.21	-321.97	-601.56	40°05'07.019"N	104°46'14.261"W	9.86	
7917.00†	88.338	179.709	7501.65	361.19	-358.95	-601.44	40°05'06.654"N	104°46'14.259"W	1.80	7" Casing Point
7938.00	88.700	179.600	7502.19	382.18	-379.94	-601.31	40°05'06.446"N	104°46'14.257"W	1.80	
8027.00	88.600	180.000	7504.29	471.15	-468.91	-601.00	40°05'05.567"N	104°46'14.253"W	0.46	
8114.00	90.300	180.300	7505.13	558.15	-555.91	-601.23	40°05'04.707"N	104°46'14.256"W	1.98	
8201.00	90.500	180.200	7504.52	645.14	-642.90	-601.61	40°05'03.848"N	104°46'14.261"W	0.26	
8286.00	90.500	180.600	7503.78	730.14	-727.90	-602.20	40°05'03.008"N	104°46'14.269"W	0.47	
8372.00	90.500	180.000	7503.03	816.14	-813.89	-602.65	40°05'02.158"N	104°46'14.274"W	0.70	
8459.00	90.400	180.700	7502.34	903.13	-900.89	-603.18	40°05'01.298"N	104°46'14.281"W	0.81	
8544.00	90.700	181.200	7501.53	988.12	-985.87	-604.59	40°05'00.458"N	104°46'14.299"W	0.69	
8631.00	90.000	180.300	7501.00	1075.12	-1072.86	-605.73	40°04'59.599"N	104°46'14.314"W	1.31	
8717.00	89.800	178.700	7501.15	1161.11	-1158.85	-604.98	40°04'58.749"N	104°46'14.304"W	1.87	

REFERENCE WELLPATH IDENTIFICATION			
Operator	KERR-MCGEE OIL & GAS ONSHORE LP	Slot	SLOT#02 BURKHARDT 13C-3HZ (420'FNL & 1180'FWL, SEC.03)
Area	COLORADO	Well	BURKHARDT 13C-3HZ
Field	WELD COUNTY (KERR MCGEE)	Wellbore	BURKHARDT 13C-3HZ AWB
Facility	SEC.03-T1N-R66W		

WELLPATH DATA (117 stations)										
MD [ft]	Inclination [°]	Azimuth [°]	TVD [ft]	Vert Sect [ft]	North [ft]	East [ft]	Latitude	Longitude	DLS [°/100ft]	Comments
8802.00	89.800	179.100	7501.44	1246.08	-1243.84	-603.35	40°04'57.909"N	104°46'14.283"W	0.47	
8887.00	89.500	179.100	7501.96	1331.06	-1328.83	-602.01	40°04'57.069"N	104°46'14.266"W	0.35	
8974.00	89.300	178.800	7502.87	1418.04	-1415.81	-600.42	40°04'56.210"N	104°46'14.245"W	0.41	
9059.00	89.200	179.100	7503.99	1503.01	-1500.78	-598.86	40°04'55.370"N	104°46'14.225"W	0.37	
9144.00	89.000	179.800	7505.32	1587.99	-1585.77	-598.05	40°04'54.530"N	104°46'14.215"W	0.86	
9229.00	90.000	179.600	7506.06	1672.98	-1670.76	-597.60	40°04'53.690"N	104°46'14.209"W	1.20	
9314.00	90.100	180.900	7505.99	1757.98	-1755.76	-597.97	40°04'52.850"N	104°46'14.214"W	1.53	
9399.00	90.300	181.300	7505.69	1842.97	-1840.74	-599.60	40°04'52.010"N	104°46'14.235"W	0.53	
9484.00	90.600	181.100	7505.02	1927.96	-1925.72	-601.38	40°04'51.171"N	104°46'14.258"W	0.42	
9569.00	89.100	181.000	7505.25	2012.94	-2010.71	-602.94	40°04'50.331"N	104°46'14.278"W	1.77	
9656.00	89.200	180.500	7506.54	2099.93	-2097.69	-604.08	40°04'49.471"N	104°46'14.292"W	0.59	
9739.00	89.800	180.700	7507.26	2182.93	-2180.68	-604.95	40°04'48.651"N	104°46'14.303"W	0.76	
9911.00	90.900	181.500	7506.21	2354.90	-2352.64	-608.25	40°04'46.952"N	104°46'14.346"W	0.79	
10085.00	89.800	181.600	7505.15	2528.84	-2526.57	-612.96	40°04'45.233"N	104°46'14.406"W	0.63	
10255.00	90.300	181.200	7505.00	2698.81	-2696.52	-617.11	40°04'43.553"N	104°46'14.460"W	0.38	
10425.00	90.100	181.700	7504.41	2868.77	-2866.46	-621.41	40°04'41.874"N	104°46'14.515"W	0.32	
10596.00	90.500	181.200	7503.51	3039.72	-3037.41	-625.74	40°04'40.185"N	104°46'14.571"W	0.37	
10771.00	90.000	180.900	7502.75	3214.70	-3212.37	-628.95	40°04'38.456"N	104°46'14.612"W	0.33	
10949.00	88.400	179.700	7505.23	3392.68	-3390.35	-629.88	40°04'36.697"N	104°46'14.624"W	1.12	
11036.00	89.500	179.200	7506.83	3479.65	-3477.33	-629.04	40°04'35.837"N	104°46'14.613"W	1.39	
11125.00	89.900	179.100	7507.29	3568.63	-3566.31	-627.72	40°04'34.958"N	104°46'14.596"W	0.46	
11210.00	90.000	179.000	7507.37	3653.62	-3651.30	-626.31	40°04'34.118"N	104°46'14.578"W	0.17	
11296.00	90.000	179.000	7507.37	3739.60	-3737.39	-624.81	40°04'33.268"N	104°46'14.559"W	0.00	
11466.00	91.100	179.000	7505.74	3909.55	-3907.25	-621.85	40°04'31.589"N	104°46'14.520"W	0.65	
11637.00	90.700	178.800	7503.05	4080.48	-4078.20	-618.56	40°04'29.899"N	104°46'14.478"W	0.26	
11798.00	89.900	178.000	7502.21	4241.40	-4239.13	-614.07	40°04'28.309"N	104°46'14.420"W	0.70	Last BHI MWD+IFR Surveys
11848.00	89.900	178.000	7502.29	4291.36	-4289.10	-612.32	40°04'27.815"N	104°46'14.398"W	0.00	Projection to Bit

HOLE & CASING SECTIONS - Ref Wellbore: BURKHARDT 13C-3HZ AWB Ref Wellpath: BURKHARDT 13C-3HZ AWP										
String/Diameter	Start MD [ft]	End MD [ft]	Interval [ft]	Start TVD [ft]	End TVD [ft]	Start N/S [ft]	Start E/W [ft]	End N/S [ft]	End E/W [ft]	
13.5in Open Hole	16.00	1647.00	1631.00	16.00	1646.95	0.00	0.00	-2.03	-0.72	
9.625in Casing Surface	16.00	1634.00	1618.00	16.00	1633.95	0.00	0.00	-1.97	-0.68	
8.75in Open Hole	1647.00	7927.00	6280.00	1646.95	7501.93	-2.03	-0.72	-368.94	-601.38	
7in Casing Intermediate	16.00	7917.00	7901.00	16.00	7501.65	0.00	0.00	-358.95	-601.44	
6.125in Open Hole	7927.00	11848.00	3921.00	7501.93	7502.29	-368.94	-601.38	-4289.10	-612.32	

REFERENCE WELLPATH IDENTIFICATION			
Operator	KERR-MCGEE OIL & GAS ONSHORE LP	Slot	SLOT#02 BURKHARDT 13C-3HZ (420'FNL & 1180'FWL, SEC.03)
Area	COLORADO	Well	BURKHARDT 13C-3HZ
Field	WELD COUNTY (KERR MCGEE)	Wellbore	BURKHARDT 13C-3HZ AWB
Facility	SEC.03-T1N-R66W		

TARGETS									
Name	MD [ft]	TVD [ft]	North [ft]	East [ft]	Grid East [US ft]	Grid North [US ft]	Latitude	Longitude	Shape
SEC.03-T1N-R66W SECTION LINES		-41.00	0.20	-29.92	3204647.31	1275079.54	40°05'10.203"N	104°46'06.906"W	polygon
SEC.03-T1N-R66W HARDLINES (460' SETBACK)		7299.00	0.20	-29.92	3204647.31	1275079.54	40°05'10.203"N	104°46'06.906"W	polygon
BURKHARDT 13C-3HZ BHL ON PLAT REV-1 (460'FSL & 581'FWL, SEC.03)		7515.00	-4315.74	-613.72	3204099.17	1270759.11	40°04'27.552"N	104°46'14.416"W	point
BURKHARDT 13C-3HZ LANDBOX		7515.00	0.00	0.00	3204677.24	1275079.59	40°05'10.201"N	104°46'06.521"W	polygon

WELLPATH COMPOSITION - Ref Wellbore: BURKHARDT 13C-3HZ AWB Ref Wellpath: BURKHARDT 13C-3HZ AWP				
Start MD [ft]	End MD [ft]	Positional Uncertainty Model	Log Name/Comment	Wellbore
16.00	1595.00	ISCWSA MWD, Rev. 2 (Standard)	CATHEDRAL ENERGY SURFACE MWD SURVEYS <58-1595>	BURKHARDT 13C-3HZ AWB
1595.00	7880.00	NaviTrak (MAGCORR,IFR)	BHI MWD+IFR SURVEYS 8 3/4" HOLE <1734-7880>	BURKHARDT 13C-3HZ AWB
7880.00	11798.00	NaviTrak (MAGCORR,IFR)	BHI MWD+IFR SURVEYS 6 1/8" HOLE <7938-11798>	BURKHARDT 13C-3HZ AWB
11798.00	11848.00	Blind Drilling (std)	Projection to bit	BURKHARDT 13C-3HZ AWB

Actual Wellpath Report

BURKHARDT 13C-3HZ AWP

Page 6 of 6

REFERENCE WELLPATH IDENTIFICATION			
Operator	KERR-MCGEE OIL & GAS ONSHORE LP	Slot	SLOT#02 BURKHARDT 13C-3HZ (420'FNL & 1180'FWL, SEC.03)
Area	COLORADO	Well	BURKHARDT 13C-3HZ
Field	WELD COUNTY (KERR MCGEE)	Wellbore	BURKHARDT 13C-3HZ AWB
Facility	SEC.03-T1N-R66W		

WELLPATH COMMENTS				
MD [ft]	Inclination [°]	Azimuth [°]	TVD [ft]	Comment
16.00	0.000	99.500	16.00	Tie-On
58.00	0.300	99.500	58.00	Begin CATHEDRAL MWD Surveys
1595.00	0.300	217.300	1594.95	Tie-Into CATHEDRAL MWD Surveys
1734.00	0.400	202.600	1733.95	Begin BHI MWD+IFR Surveys
7917.00	88.338	179.709	7501.65	7" Casing Point
11798.00	89.900	178.000	7502.21	Last BHI MWD+IFR Surveys
11848.00	89.900	178.000	7502.29	Projection to Bit