

**ANADARKO PETROLEUM CORP - EBUS
DO NOT MAIL - PO BOX 4995
THE WOODLANDS, Texas**

MCKINSTRY 7C-21HZ

Majors 29

Post Job Summary **Cement Surface Casing**

Date Prepared: 1/19/2014
Version: 1

Service Supervisor: SMITH, AARON

Submitted by: PRUDHOMME, JOSHUA

HALLIBURTON

HALLIBURTON

Wellbore Geometry

Job Tubulars					MD		Shoe Joint Length ft
Type	Description	Size in	ID in	Wt lbm/ft	Top ft	Bottom ft	
Casing	9 5/8" Surface Casing	9.63	8.921	36.00	0.00	1,000.50	44.40
Open Hole Section	13 1/2" Open Hole Section		13.500		0.00	1,010.00	0.00

HALLIBURTON

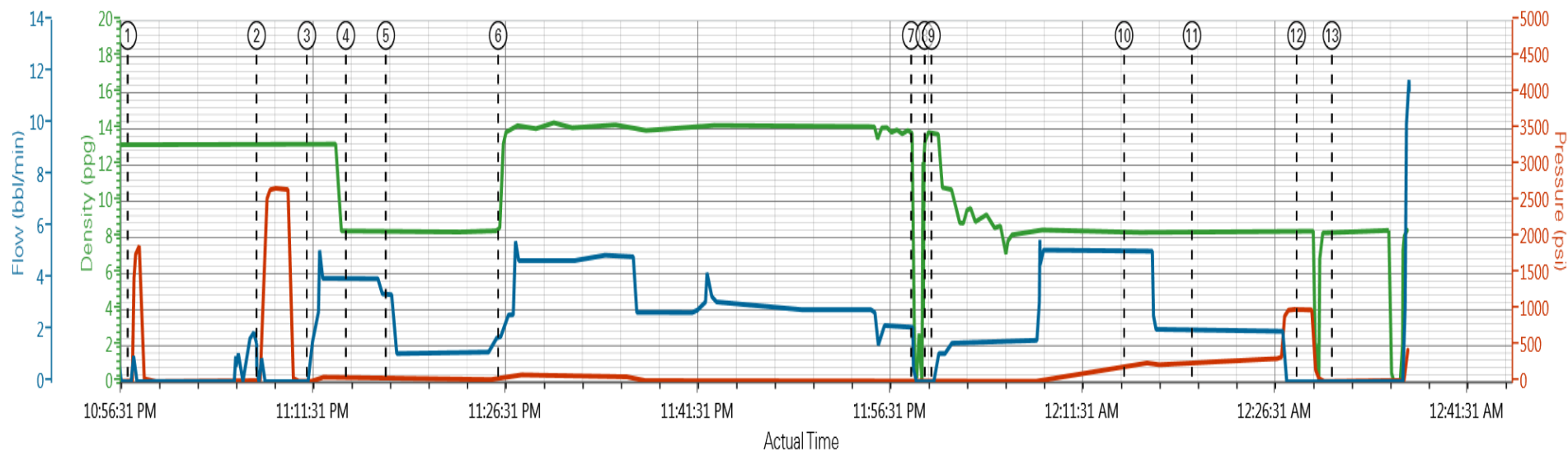
Pumping Schedule

Stage /Plug #	Fluid #	Fluid Type	Fluid Name	Surface Density lbm/gal	Avg Rate bbl/min	Surface Volume	Downhole Volume
1	1	Spacer	Fresh Water Spacer	8.33	4	10.0 bbl	10.0 bbl
1	2	Spacer	Mud Flush	8.4	4	12.0 bbl	12.0 bbl
1	1	Spacer	Fresh Water Spacer	8.33	2	10.0 bbl	10.0 bbl
1	4	Cement Slurry	SwiftCem B2	14.2	4	381.0 sacks	381.0 sacks

HALLIBURTON

Data Acquisition

ANADARKO PETROLEUM MCKINSTRY 7C-21HZ SURFACE



- ① Start Job 13.15;14;0 ④ Pump Spacer 2 8.43;63;4 ⑦ Shutdown 0.74;4;0 ⑩ Other 8.29;206;5.1 ⑬ End Job 8.32;3;0
- ② Test Lines 13.24;17;0 ⑤ Pump Spacer 1 8.39;57;3.4 ⑧ Drop Top Plug 13.81;-2;0 ⑪ Other 8.31;271;2
- ③ Pump Spacer 1 13.15;4;0 ⑥ Pump Cement 10.65;38;1.7 ⑨ Pump Displacement 13.77;-1;0 ⑫ Bump Plug 8.41;1002;0

▼ **HALLIBURTON** | iCem® Service

Created: 2014-01-11 22:07:49, Version: 3.0.121

Edit

Customer: ANADARKO PETROLEUM CORP -
EBUS

Job Date: 1/11/2014 10:12:01 PM

Well: MCKINSTRY 7C-21HZ

Representative: AARON SMITH

Sales Order #: 901020411

Service Supervisor Reports

Job Log

Date/Time	Chart #	Activity Code	Pump Rate	Cum Vol	Pump		Pressure (psig)	Comments
01/11/2014 19:00		Casing on Bottom						
01/11/2014 19:00		Circulate Well						
01/11/2014 19:30		Arrive at Location from Service Center						WITH ALL EQUIPMENT AND MATERIALS, PUMP TRUCK WAS INVOLVED IN INCIDENT, HAD TO WAIT FOR ANOTHER PUMP TRUCK TO ARRIVE.
01/11/2014 21:30		Assessment Of Location Safety Meeting						
01/11/2014 21:35		Pre-Rig Up Safety Meeting						RIG-UP JSA
01/11/2014 21:45		Rig-Up Equipment						
01/11/2014 22:10		Rig-Up Completed						
01/11/2014 22:30		Pre-Job Safety Meeting						WITH CUSTOMER REP AND RIG CREW
01/11/2014 22:57		Start Job						
01/11/2014 23:07		Test Lines					2500.0	FRESH WATER WITH NO ADDITIVES
01/11/2014 23:11		Pump Spacer 1	4	10			100.0	FRESH WATER WITH NO ADDITIVES
01/11/2014 23:14		Pump Spacer 2	4	12			100.0	FRESH WATER WITH MUD FLUSH
01/11/2014 23:17		Pump Spacer 1	2	10			100.0	FRESH WATER WITH NO ADDITIVES
01/11/2014 23:26		Pump Cement	4	104			100.0	381 SKS SWIFTCEM B1 @ 14.2 PPG 1.55 YIELD, 7.68 GAL/SK, VERIFIED USING PRESSURIZED SCALES.
01/11/2014 23:58		Shutdown						
01/11/2014 23:59		Drop Top Plug						PRE-LOADED HWE TOP PLUG IN PLUG CONTAINER VERIFIED BY CUSTOMER REP
01/11/2014 23:59		Pump Displacement	5	74.5			318.0	FRESH WATER WITH NO ADDITIVES
01/12/2014 00:15		Spacer Returns to Surface						@30 BBLS DISPLACEMENT, 32 BBLS TO THE PIT
01/12/2014 00:20		Cement Returns to Surface						@62 BBLS DISPLACEMENT, 12.5 BBLS TO THE PIT
01/12/2014 00:27		Bump Plug	2				1001.0	FINAL CIRCULATING PRESSURE 318, PSI TO LAND 321, PSI TO LIFT 426,
01/12/2014 00:31		Check Floats						FLOATS HELD .5 BBLS BACK
01/12/2014 00:31		End Job						RIG DOWN JSA, JOURNEY MANAGMENT MEETING, THANKS AARON SMITH AND CREW

The Road to Excellence Starts with Safety

Sold To #: 300466	Ship To #: 3117154	Quote #:	Sales Order #: 901020411
Customer: ANADARKO PETROLEUM CORP - EBUS		Customer Rep: Case, Randy	
Well Name: MCKINSTRY		Well #: 7C-21HZ	API/UWI #:
Field: WATTENBERG	City (SAP): LONGMONT	County/Parish: Weld	State: Colorado
Contractor: Majors		Rig/Platform Name/Num: Majors 29	
Job Purpose: Cement Surface Casing			
Well Type: Development Well		Job Type: Cement Surface Casing	
Sales Person: GREGORY, JON		Srvc Supervisor: SMITH, AARON	MBU ID Emp #: 518187

Job Personnel

HES Emp Name	Exp Hrs	Emp #	HES Emp Name	Exp Hrs	Emp #	HES Emp Name	Exp Hrs	Emp #
DODSON, RICHARD Bryan	5.5	518192	HINKLE, BRADLEY Dean	5.5	512123	SMITH, AARON David	5.5	518187
TAUILILI, SAIAIGA	5.5	545471						

Equipment

HES Unit #	Distance-1 way	HES Unit #	Distance-1 way	HES Unit #	Distance-1 way	HES Unit #	Distance-1 way
10866497C	30 mile	11562570C	30 mile	11667703C	30 mile	12010173	30 mile

Job

Job Times

Formation Name				Date	Time	Time Zone
Formation Depth (MD)	Top		Bottom	Called Out	11 - Jan - 2014	14:00 MST
Form Type	BHST			On Location	11 - Jan - 2014	19:30 MST
Job depth MD	1010. ft			Job Started	11 - Jan - 2014	22:57 MST
Water Depth	Wk Ht Above Floor 6. ft			Job Completed	12 - Jan - 2014	00:31 MST
Perforation Depth (MD)	From		To	Departed Loc	12 - Jan - 2014	01:00 MST

Well Data

Description	New / Used	Max pressure psig	Size in	ID in	Weight lbm/ft	Thread	Grade	Top MD ft	Bottom MD ft	Top TVD ft	Bottom TVD ft
13 1/2" Open Hole Section				13.5				.	1010.		
9 5/8" Surface Casing	Unknown		9.625	8.921	36.		J-55	.	1000.5		

Sales/Rental/3rd Party (HES)

Description	Qty	Qty uom	Depth	Supplier
CMT CASING EQUIPMENT BOM	1	JOB		
MILEAGE FOR CEMENTING CREW,ZI	30	MI		
ZI FUEL SURCHG-CARS/PICKUPS<1 1/2TON	30	MI		
KIT,HALL WELD-A	1	EA		
CNTRLZR, 9 5/8"x13 3/4',#500-0963-1375	7	EA		
BASKET - CEMENT - 9-5/8 CSG X 12-1/4	1	EA		
Description	Qty	Qty uom	Depth	Supplier
PLUG,CMTG,TOP,9 5/8,HWE,8.16 MIN/9.06 MA	1	EA		
COLLAR-STOP-9 5/8"-FRICTION-HINGED	2	EA		

Fluid Data

Stage/Plug #: 1

Fluid #	Stage Type	Fluid Name	Qty	Qty uom	Mixing Density lbm/gal	Yield ft ³ /sk	Mix Fluid Gal/sk	Rate bbl/min	Total Mix Fluid Gal/sk
1	Fresh Water Spacer		10.00	bbl	8.33			4.0	
2	Mud Flush		12.00	bbl	8.4			4.0	
3.5 lbm/bbl		MUD FLUSH III, 40 LB SACK (101633304)							
42 gal/bbl		MUD FLUSH III - SBM (528788)							
3	Fresh Water Spacer		10.00	bbl	8.33			2.0	
4	SwiftCem B2	SWIFTCM (TM) SYSTEM (452990)	381.0	sacks	14.2	1.54	7.66	4.0	7.66
7.66 Gal		FRESH WATER							
Calculated Values		Pressures		Volumes					
Displacement	74.5	Shut In: Instant		Lost Returns		Cement Slurry		Pad	
Top Of Cement		5 Min		Cement Returns	12.5	Actual Displacement	74.5	Treatment	
Frac Gradient		15 Min		Spacers	32	Load and Breakdown		Total Job	
Rates									
Circulating		Mixing		Displacement		Avg. Job			
Cement Left In Pipe	Amount	44.4 ft	Reason	Shoe Joint					
Frac Ring # 1 @	ID		Frac ring # 2 @	ID		Frac Ring # 3 @	ID		Frac Ring # 4 @
The Information Stated Herein Is Correct				Customer Representative Signature					

