

MULTI-WELL PLAN – SCHAEFER 24-3-7HC PAD

SECTION 24, TOWNSHIP 1 SOUTH, RANGE 67 WEST OF THE 6TH P.M.

WELL ORDER

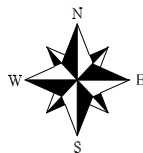
1. SCHAEFER 24-3-8HN
2. SCHAEFER 24-3-7HC
3. SCHAEFER 24-3-6HN
4. SCHAEFER 24-3-5HC
5. SCHAEFER 24-3-4HN
6. SCHAEFER 24-3-3HC
7. SCHAEFER 24-3-2HN
8. SCHAEFER 24-3-1HC
9. SCHAEFER 25-1-1HN
10. SCHAEFER 25-1-2HC
11. SCHAEFER 25-1-3HN
12. SCHAEFER 25-1-4HC
13. SCHAEFER 25-1-5HN
14. SCHAEFER 25-1-6HC
15. SCHAEFER 25-1-7HN
16. SCHAEFER 25-1-8HC

NOTES:

- 1) BEARINGS FOR THIS MAP ARE ASSUMED AND BASED UPON GPS OBSERVATIONS MADE BETWEEN MONUMENTS LOCATED AT THE SOUTHWEST CORNER AND SOUTH QUARTER CORNER OF SECTION 24, T.1S., R.67W.
- 2) HORIZONTAL DATUM IS NAD83.
- 3) VERTICAL DATUM IS NAVD88 AND ORIGINATES FROM THE LOCAL C.O.R.S. NETWORK, UTILIZING THE GEOID12A MODEL.

LEGEND

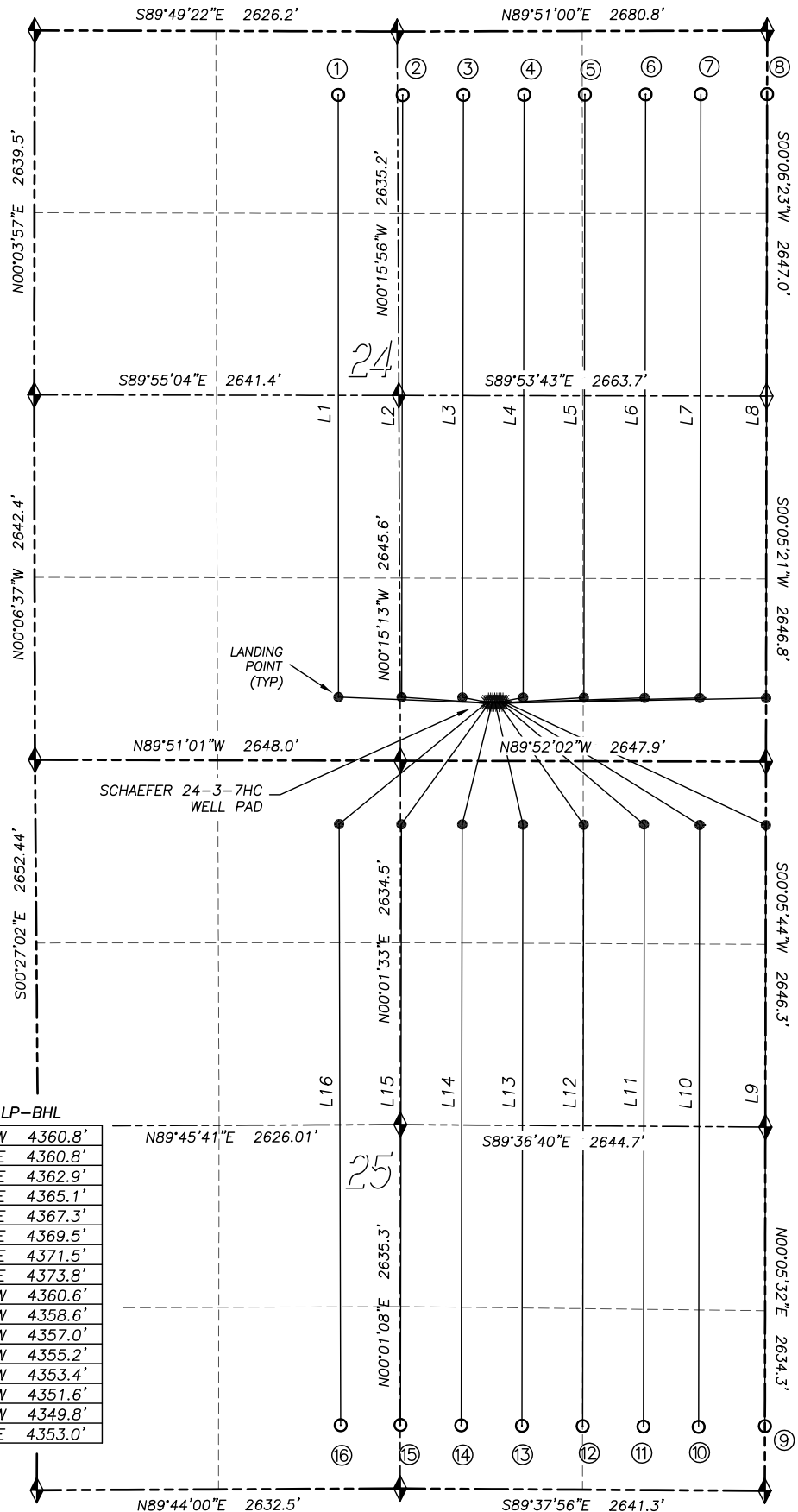
- ◆ FOUND MONUMENT AS DESCRIBED
- ☀ PROPOSED WELL
- EXISTING WELL
- BOTTOM HOLE
- ABANDONED WELL
- ◆ CALCULATED POSITION



0 600 1200
SCALE: 1" = 1200'

DIRECTIONAL LINE DATA
FROM SHL-LP FROM LP-BHL

L1	N87°40'14"W	1080.5'	N00°01'21"W	4360.8'
L2	N86°09'46"W	638.5'	N00°05'52"E	4360.8'
L3	N78°52'31"W	216.1'	N00°05'52"E	4362.9'
L4	N79°11'03"E	216.8'	N00°05'52"E	4365.1'
L5	N86°26'36"E	639.1'	N00°05'52"E	4367.3'
L6	N87°55'09"E	1063.6'	N00°05'52"E	4369.5'
L7	N88°30'34"E	1448.4'	N00°05'52"E	4371.5'
L8	N88°54'18"E	1913.3'	N00°05'52"E	4373.8'
L9	S64°44'18"E	2105.2'	S00°05'38"W	4360.6'
L10	S58°03'09"E	1695.8'	S00°05'38"W	4358.6'
L11	S49°37'07"E	1383.6'	S00°05'38"W	4357.0'
L12	S35°05'09"E	1094.2'	S00°05'38"W	4355.2'
L13	S12°50'43"E	917.3'	S00°05'38"W	4353.4'
L14	S13°54'02"W	920.2'	S00°05'38"W	4351.6'
L15	S35°54'29"W	1101.6'	S00°05'38"W	4349.8'
L16	S50°32'20"W	1402.1'	S00°08'46"E	4353.0'



MULTI-WELL PLAN – SCHAEFER 24-3-7HC PAD
WELL LOCATION DATA

SECTION 24, TOWNSHIP 1 SOUTH, RANGE 67 WEST OF THE 6TH P.M.

Landing Point					Bottom Hole				
Well Name	Latitude	Longitude	Footage		Well Name	Latitude	Longitude	Footage	
Schaefer 24-3-1HC	39.94457°	104.82784°	460' FSL	0' FEL	Schaefer 24-3-1HC	39.95658°	104.82781°	460' FNL	0' FEL
Schaefer 24-3-2HN	39.94457°	104.82955°	460' FSL	480' FEL	Schaefer 24-3-2HN	39.95657°	104.82952°	460' FNL	480' FEL
Schaefer 24-3-3HC	39.94458°	104.83097°	460' FSL	880' FEL	Schaefer 24-3-3HC	39.95657°	104.83094°	460' FNL	880' FEL
Schaefer 24-3-4HN	39.94458°	104.83254°	460' FSL	1320' FEL	Schaefer 24-3-4HN	39.95657°	104.83251°	460' FNL	1320' FEL
Schaefer 24-3-4HN	39.94458°	104.83411°	460' FSL	1760' FEL	Schaefer 24-3-4HN	39.95656°	104.83408°	460' FNL	1760' FEL
Schaefer 24-3-6HN	39.94459°	104.83568°	460' FSL	2200' FEL	Schaefer 24-3-6HN	39.95656°	104.83565°	460' FNL	2200' FEL
Schaefer 24-3-7HC	39.94459°	104.83725°	460' FSL	2640' FEL	Schaefer 24-3-7HC	39.95656°	104.83722°	460' FNL	2640' FEL
Schaefer 24-3-8HN	39.94459°	104.83888°	460' FSL	2200' FWL	Schaefer 24-3-8HN	39.95656°	104.83888°	460' FNL	2200' FWL
Schaefer 25-1-1HN	39.94205°	104.82784°	460' FNL	0' FEL	Schaefer 25-1-1HN	39.93008°	104.82787°	460' FSL	0' FEL
Schaefer 25-1-2HC	39.94205°	104.82955°	460' FNL	480' FEL	Schaefer 25-1-2HC	39.93009°	104.82958°	460' FSL	480' FEL
Schaefer 25-1-3HN	39.94205°	104.83098°	460' FNL	880' FEL	Schaefer 25-1-3HN	39.93009°	104.83101°	460' FSL	880' FEL
Schaefer 25-1-4HC	39.94206°	104.83255°	460' FNL	1320' FEL	Schaefer 25-1-4HC	39.93010°	104.83258°	460' FSL	1320' FEL
Schaefer 25-1-5HN	39.94206°	104.83412°	460' FNL	1760' FEL	Schaefer 25-1-5HN	39.93011°	104.83414°	460' FSL	1760' FEL
Schaefer 25-1-6HC	39.94206°	104.83569°	460' FNL	2200' FEL	Schaefer 25-1-6HC	39.93012°	104.83571°	460' FSL	2200' FEL
Schaefer 25-1-7HN	39.94206°	104.83725°	460' FNL	2640' FEL	Schaefer 25-1-7HN	39.93013°	104.83728°	460' FSL	2640' FEL
Schaefer 25-1-8HC	39.94207°	104.83886°	460' FNL	2200' FEWL	Schaefer 25-1-8HC	39.93012°	104.83883°	460' FSL	2200' FEWL