

EXTRACTION OIL & GAS

Location: COLORADO Slot: SLOT#02 KODAK 3 (1245FNL & 1043FWL, SEC.27)
Field: WELD COUNTY (NAD83/TRUE NORTH) Well: KODAK 3
Facility: SEC.27-T6N-R67W Wellbore: KODAK 3 PWB

Plot reference wellpath is KODAK 3 PWB (REV-A.0)

True vertical depths are referenced to FRONTIER 10 (22KB) (RKB)	Grid System: NAD83 / Lambert Colorado SP, Northern Zone (501), US feet
Measured depths are referenced to FRONTIER 10 (22KB) (RKB)	North Reference: True north
FRONTIER 10 (22KB) to Mean Sea Level: 4792 feet	Scale: True distance
Mean Sea Level to Mud line (At Slot: SLOT#02 KODAK 3 (1245FNL & 1043FWL, SEC.27)): 0 feet	Depths are in feet
Coordinates are in feet referenced to Slot	Created by: ingmjamm on 11/12/2014

Location Information

Facility Name	Grid East (US ft)	Grid North (US ft)	Latitude	Longitude
SEC.27-T6N-R67W	3171020.645	1411663.140	40°27'42.444"N	104°53'07.368"W
Slot	Local N (ft)	Local E (ft)	Grid East (US ft)	Grid North (US ft)
SLOT#02 KODAK 3 (1245FNL & 1043FWL, SEC.27)	-14.57	0.00	3171020.746	1411648.568
FRONTIER 10 (22KB) (RKB) to Mud line (At Slot: SLOT#02 KODAK 3 (1245FNL & 1043FWL, SEC.27))				4792ft
Mean Sea Level to Mud line (At Slot: SLOT#02 KODAK 3 (1245FNL & 1043FWL, SEC.27))				0ft
FRONTIER 10 (22KB) (RKB) to Mean Sea Level				4792ft

Targets

Name	MD (ft)	TVD (ft)	Local N (ft)	Local E (ft)	Grid East (US ft)	Grid North (US ft)	Latitude	Longitude
SEC.27-T6N-R67W		0.00	14.57	0.00	3171020.64	1411663.14	40°27'42.444"N	104°53'07.368"W
SEC.28-T6N-R67W		0.00	14.57	0.00	3171020.64	1411663.14	40°27'42.444"N	104°53'07.368"W
SEC.29-T6N-R67W		0.00	14.57	0.00	3171020.64	1411663.14	40°27'42.444"N	104°53'07.368"W
KODAK 3 BHL ON PLAT REV-1 (129FNL & 1780FWL, SEC.29)	16288.95	6940.00	1098.48	-9649.88	3161363.85	1412680.10	40°27'53.136"N	104°55'12.216"W
KODAK 3 DRILLING CORRIDOR (60')		6940.00	0.00	0.00	3171020.75	1411648.57	40°27'42.300"N	104°53'07.368"W
KODAK 3 LANDING POINT	7368.09	6940.00	1096.60	-729.03	3170284.16	1412740.05	40°27'53.136"N	104°53'16.800"W

Survey Program

Start MD (ft)	End MD (ft)	Tool	Model	Log Name/Comment	Wellbore
22.00	17000.00	NaviTrak	NaviTrak (Standard)		KODAK 3 PWB

Well Profile Data

Design Comment	MD (ft)	Inc (°)	Az (°)	TVD (ft)	Local N (ft)	Local E (ft)	DLS (°/100ft)	VS (ft)
Tie On	22.00	0.000	340.000	22.00	0.00	0.00	0.00	0.00
End of Tangent	200.00	0.000	340.000	200.00	0.00	0.00	0.00	0.00
End of Build	300.00	1.000	340.000	299.99	0.82	-0.30	1.00	0.39
End of Tangent	850.09	1.000	340.000	850.00	9.84	-3.58	0.00	4.67
End of Build	1300.09	10.000	340.000	1297.47	50.33	-18.32	2.00	23.89
End of Tangent	1800.09	10.000	340.000	1789.87	131.92	-48.01	0.00	62.63
End of 3D Arc	1921.67	10.700	352.995	1909.49	153.04	-53.00	2.00	69.97
End of Tangent	6481.09	10.700	352.995	6389.63	993.27	-156.24	0.00	267.58
End of 3D Arc	7368.09	90.000	270.012	6940.00	1096.60	-729.03	10.00	848.38
End of Tangent	16288.95	90.000	270.012	6940.00	1098.48	-9649.88	0.00	9712.20

True Vertical Depth (ft)
Scale 1 inch = 1500 ft

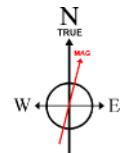
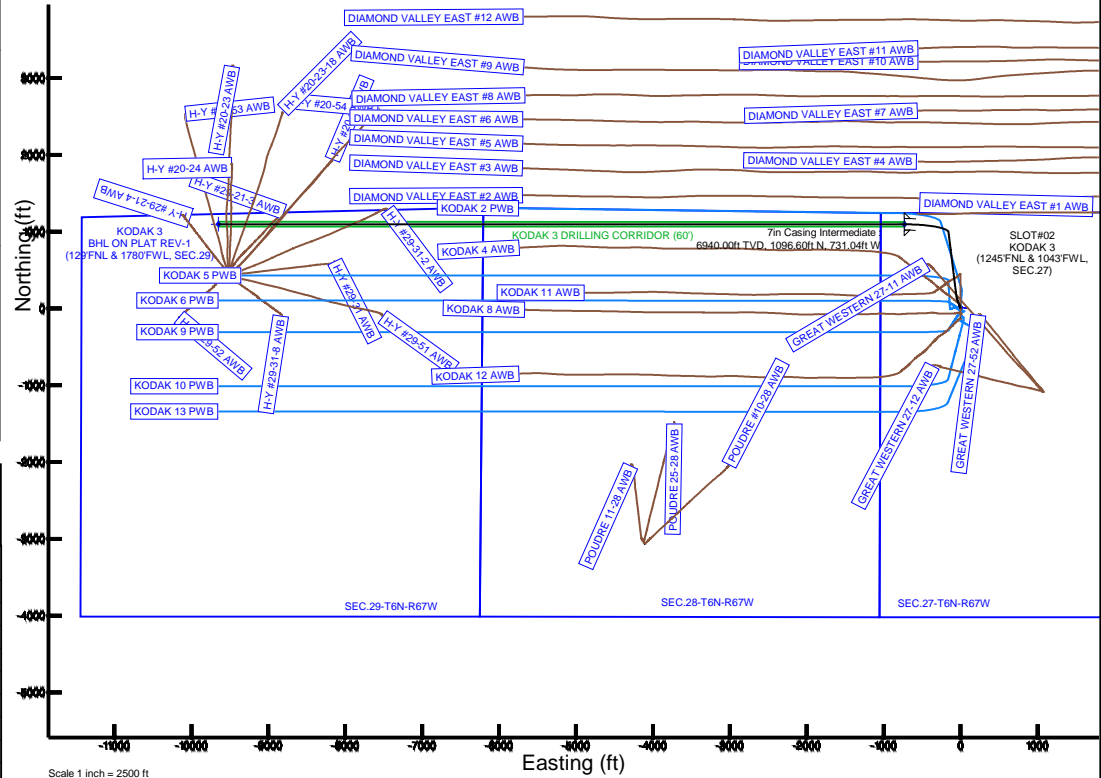
End of Tangent : 10.70° Inc, 6481.09ft MD, 6389.63ft TVD, 267.58ft VS
10.00°/100ft
7in Casing Intermediate : 90.00° Inc, 7370.11ft MD, 6940.00ft TVD, 850.38ft VS
End of 3D Arc : 90.00° Inc, 7368.09ft MD, 6940.00ft TVD, 848.38ft VS

End of Tangent : 90.00° Inc, 16288.95ft MD, 6940.00ft TVD, 9712.20ft VS

KODAK 3 BHL ON PLAT REV-1 (129FNL & 1780FWL, SEC.29)

Vertical Section (ft)

Azimuth 276.49° with reference 0.00 N, 0.00 E



BGGM (1945.0 to 2016.0) Dip: 66.96° Field: 52690.2 nT
Magnetic North is 8.57 degrees East of True North (at 10/31/2014)

To correct azimuth from Magnetic to True add 8.57 degrees



Planned Wellpath Report

KODAK 3 PWP (REV-A.0)

Page 1 of 9



REFERENCE WELLPATH IDENTIFICATION

Operator	EXTRACTION OIL & GAS	Slot	SLOT#02 KODAK 3 (1245'FNL & 1043'FWL, SEC.27)
Area	COLORADO	Well	KODAK 3
Field	WELD COUNTY (NAD83/TRUE NORTH)	Wellbore	KODAK 3 PWB
Facility	SEC.27-T6N-R67W		

REPORT SETUP INFORMATION

Projection System	NAD83 / Lambert Colorado SP, Northern Zone (501), US feet	Software System	WellArchitect® 4.0.0
North Reference	True	User	Ingmjmr
Scale	0.999964	Report Generated	11/12/2014 at 2:30:33 PM
Convergence at slot	n/a	Database/Source file	Denver/KODAK_3_PWB.xml

WELLPATH LOCATION

	Local coordinates		Grid coordinates		Geographic coordinates	
	North[ft]	East[ft]	Easting[US ft]	Northing[US ft]	Latitude	Longitude
Slot Location	-14.57	0.00	3171020.75	1411648.57	40°27'42.300"N	104°53'07.368"W
Facility Reference Pt			3171020.65	1411663.14	40°27'42.444"N	104°53'07.368"W
Field Reference Pt			3185481.27	1419166.81	40°28'55.560"N	104°49'59.556"W

WELLPATH DATUM

Calculation method	Minimum curvature	FRONTIER 10 (22'KB) (RKB) to Facility Vertical Datum	4792.00ft
Horizontal Reference Pt	Slot	FRONTIER 10 (22'KB) (RKB) to Mean Sea Level	4792.00ft
Vertical Reference Pt	FRONTIER 10 (22'KB) (RKB)	FRONTIER 10 (22'KB) (RKB) to Mud Line at Slot (SLOT#02 KODAK 3 (1245'FNL & 1043'FWL, SEC.27))	4792.00ft
MD Reference Pt	FRONTIER 10 (22'KB) (RKB)	Section Origin	N 0.00, E 0.00 ft
Field Vertical Reference	Mean Sea Level	Section Azimuth	276.49°



Planned Wellpath Report

KODAK 3 PWP (REV-A.0)

Page 2 of 9



REFERENCE WELLPATH IDENTIFICATION

Operator	EXTRACTION OIL & GAS	Slot	SLOT#02 KODAK 3 (1245'FNL & 1043'FWL, SEC.27)
Area	COLORADO	Well	KODAK 3
Field	WELD COUNTY (NAD83/TRUE NORTH)	Wellbore	KODAK 3 PWB
Facility	SEC.27-T6N-R67W		

WELLPATH DATA (173 stations) † = interpolated/extrapolated station

MD [ft]	Inclination [°]	Azimuth [°]	TVD [ft]	Vert Sect [ft]	North [ft]	East [ft]	Latitude	Longitude	DLS [°/100ft]	Comments
0.00†	0.000	340.000	0.00	0.00	0.00	0.00	40°27'42.300"N	104°53'07.368"W	0.00	
22.00	0.000	340.000	22.00	0.00	0.00	0.00	40°27'42.300"N	104°53'07.368"W	0.00	Tie On
122.00†	0.000	340.000	122.00	0.00	0.00	0.00	40°27'42.300"N	104°53'07.368"W	0.00	
200.00	0.000	340.000	200.00	0.00	0.00	0.00	40°27'42.300"N	104°53'07.368"W	0.00	End of Tangent
222.00†	0.220	340.000	222.00	0.02	0.04	-0.01	40°27'42.300"N	104°53'07.368"W	1.00	
300.00	1.000	340.000	299.99	0.39	0.82	-0.30	40°27'42.308"N	104°53'07.372"W	1.00	End of Build
322.00†	1.000	340.000	321.99	0.56	1.18	-0.43	40°27'42.312"N	104°53'07.374"W	0.00	
422.00†	1.000	340.000	421.98	1.34	2.82	-1.03	40°27'42.328"N	104°53'07.381"W	0.00	
522.00†	1.000	340.000	521.96	2.12	4.46	-1.62	40°27'42.344"N	104°53'07.389"W	0.00	
622.00†	1.000	340.000	621.95	2.90	6.10	-2.22	40°27'42.360"N	104°53'07.397"W	0.00	
722.00†	1.000	340.000	721.93	3.67	7.74	-2.82	40°27'42.376"N	104°53'07.404"W	0.00	
822.00†	1.000	340.000	821.92	4.45	9.38	-3.41	40°27'42.393"N	104°53'07.412"W	0.00	
850.09	1.000	340.000	850.00	4.67	9.84	-3.58	40°27'42.397"N	104°53'07.414"W	0.00	End of Tangent
922.00†	2.438	340.000	921.88	5.63	11.87	-4.32	40°27'42.417"N	104°53'07.424"W	2.00	
1022.00†	4.438	340.000	1021.69	8.31	17.50	-6.37	40°27'42.473"N	104°53'07.450"W	2.00	
1122.00†	6.438	340.000	1121.24	12.54	26.41	-9.61	40°27'42.561"N	104°53'07.492"W	2.00	
1222.00†	8.438	340.000	1220.39	18.31	38.57	-14.04	40°27'42.681"N	104°53'07.550"W	2.00	
1300.09	10.000	340.000	1297.47	23.89	50.33	-18.32	40°27'42.797"N	104°53'07.605"W	2.00	End of Build
1322.00†	10.000	340.000	1319.05	25.59	53.90	-19.62	40°27'42.833"N	104°53'07.622"W	0.00	
1422.00†	10.000	340.000	1417.53	33.34	70.22	-25.56	40°27'42.994"N	104°53'07.699"W	0.00	
1522.00†	10.000	340.000	1516.01	41.08	86.54	-31.50	40°27'43.155"N	104°53'07.775"W	0.00	
1622.00†	10.000	340.000	1614.49	48.83	102.86	-37.44	40°27'43.316"N	104°53'07.852"W	0.00	
1722.00†	10.000	340.000	1712.97	56.58	119.17	-43.38	40°27'43.478"N	104°53'07.929"W	0.00	
1800.09	10.000	340.000	1789.87	62.63	131.92	-48.01	40°27'43.604"N	104°53'07.989"W	0.00	End of Tangent
1822.00†	10.087	342.463	1811.45	64.26	135.53	-49.24	40°27'43.639"N	104°53'08.005"W	2.00	
1921.67	10.700	352.995	1909.49	69.97	153.04	-53.00	40°27'43.812"N	104°53'08.054"W	2.00	End of 3D Arc
1922.00†	10.700	352.995	1909.81	69.99	153.10	-53.01	40°27'43.813"N	104°53'08.054"W	0.00	
2022.00†	10.700	352.995	2008.08	74.32	171.53	-55.27	40°27'43.995"N	104°53'08.083"W	0.00	
2122.00†	10.700	352.995	2106.34	78.65	189.96	-57.54	40°27'44.177"N	104°53'08.112"W	0.00	
2222.00†	10.700	352.995	2204.60	82.99	208.39	-59.80	40°27'44.359"N	104°53'08.142"W	0.00	



Planned Wellpath Report

KODAK 3 PWP (REV-A.0)

Page 3 of 9



REFERENCE WELLPATH IDENTIFICATION

Operator	EXTRACTION OIL & GAS	Slot	SLOT#02 KODAK 3 (1245'FNL & 1043'FWL, SEC.27)
Area	COLORADO	Well	KODAK 3
Field	WELD COUNTY (NAD83/TRUE NORTH)	Wellbore	KODAK 3 PWB
Facility	SEC.27-T6N-R67W		

WELLPATH DATA (173 stations) † = interpolated/extrapolated station

MD [ft]	Inclination [°]	Azimuth [°]	TVD [ft]	Vert Sect [ft]	North [ft]	East [ft]	Latitude	Longitude	DLS [°/100ft]	Comments
2322.00†	10.700	352.995	2302.86	87.32	226.82	-62.07	40°27'44.541"N	104°53'08.171"W	0.00	
2422.00†	10.700	352.995	2401.12	91.66	245.24	-64.33	40°27'44.723"N	104°53'08.200"W	0.00	
2522.00†	10.700	352.995	2499.38	95.99	263.67	-66.59	40°27'44.905"N	104°53'08.230"W	0.00	
2622.00†	10.700	352.995	2597.64	100.32	282.10	-68.86	40°27'45.088"N	104°53'08.259"W	0.00	
2722.00†	10.700	352.995	2695.90	104.66	300.53	-71.12	40°27'45.270"N	104°53'08.288"W	0.00	
2822.00†	10.700	352.995	2794.17	108.99	318.96	-73.39	40°27'45.452"N	104°53'08.317"W	0.00	
2922.00†	10.700	352.995	2892.43	113.33	337.39	-75.65	40°27'45.634"N	104°53'08.347"W	0.00	
3022.00†	10.700	352.995	2990.69	117.66	355.81	-77.92	40°27'45.816"N	104°53'08.376"W	0.00	
3122.00†	10.700	352.995	3088.95	121.99	374.24	-80.18	40°27'45.998"N	104°53'08.405"W	0.00	
3222.00†	10.700	352.995	3187.21	126.33	392.67	-82.44	40°27'46.180"N	104°53'08.435"W	0.00	
3322.00†	10.700	352.995	3285.47	130.66	411.10	-84.71	40°27'46.362"N	104°53'08.464"W	0.00	
3422.00†	10.700	352.995	3383.73	135.00	429.53	-86.97	40°27'46.544"N	104°53'08.493"W	0.00	
3522.00†	10.700	352.995	3481.99	139.33	447.96	-89.24	40°27'46.726"N	104°53'08.523"W	0.00	
3622.00†	10.700	352.995	3580.26	143.66	466.38	-91.50	40°27'46.909"N	104°53'08.552"W	0.00	
3722.00†	10.700	352.995	3678.52	148.00	484.81	-93.77	40°27'47.091"N	104°53'08.581"W	0.00	
3822.00†	10.700	352.995	3776.78	152.33	503.24	-96.03	40°27'47.273"N	104°53'08.610"W	0.00	
3922.00†	10.700	352.995	3875.04	156.67	521.67	-98.29	40°27'47.455"N	104°53'08.640"W	0.00	
4022.00†	10.700	352.995	3973.30	161.00	540.10	-100.56	40°27'47.637"N	104°53'08.669"W	0.00	
4122.00†	10.700	352.995	4071.56	165.33	558.53	-102.82	40°27'47.819"N	104°53'08.698"W	0.00	
4222.00†	10.700	352.995	4169.82	169.67	576.95	-105.09	40°27'48.001"N	104°53'08.728"W	0.00	
4322.00†	10.700	352.995	4268.08	174.00	595.38	-107.35	40°27'48.183"N	104°53'08.757"W	0.00	
4422.00†	10.700	352.995	4366.35	178.34	613.81	-109.62	40°27'48.365"N	104°53'08.786"W	0.00	
4522.00†	10.700	352.995	4464.61	182.67	632.24	-111.88	40°27'48.547"N	104°53'08.815"W	0.00	
4622.00†	10.700	352.995	4562.87	187.00	650.67	-114.14	40°27'48.730"N	104°53'08.845"W	0.00	
4722.00†	10.700	352.995	4661.13	191.34	669.10	-116.41	40°27'48.912"N	104°53'08.874"W	0.00	
4822.00†	10.700	352.995	4759.39	195.67	687.52	-118.67	40°27'49.094"N	104°53'08.903"W	0.00	
4922.00†	10.700	352.995	4857.65	200.01	705.95	-120.94	40°27'49.276"N	104°53'08.933"W	0.00	
5022.00†	10.700	352.995	4955.91	204.34	724.38	-123.20	40°27'49.458"N	104°53'08.962"W	0.00	
5122.00†	10.700	352.995	5054.17	208.67	742.81	-125.47	40°27'49.640"N	104°53'08.991"W	0.00	
5222.00†	10.700	352.995	5152.44	213.01	761.24	-127.73	40°27'49.822"N	104°53'09.021"W	0.00	



Planned Wellpath Report

KODAK 3 PWP (REV-A.0)

Page 4 of 9



REFERENCE WELLPATH IDENTIFICATION

Operator	EXTRACTION OIL & GAS	Slot	SLOT#02 KODAK 3 (1245'FNL & 1043'FWL, SEC.27)
Area	COLORADO	Well	KODAK 3
Field	WELD COUNTY (NAD83/TRUE NORTH)	Wellbore	KODAK 3 PWB
Facility	SEC.27-T6N-R67W		

WELLPATH DATA (173 stations) † = interpolated/extrapolated station

MD [ft]	Inclination [°]	Azimuth [°]	TVD [ft]	Vert Sect [ft]	North [ft]	East [ft]	Latitude	Longitude	DLS [°/100ft]	Comments
5322.00†	10.700	352.995	5250.70	217.34	779.67	-129.99	40°27'50.004"N	104°53'09.050"W	0.00	
5422.00†	10.700	352.995	5348.96	221.68	798.09	-132.26	40°27'50.186"N	104°53'09.079"W	0.00	
5522.00†	10.700	352.995	5447.22	226.01	816.52	-134.52	40°27'50.368"N	104°53'09.108"W	0.00	
5622.00†	10.700	352.995	5545.48	230.34	834.95	-136.79	40°27'50.551"N	104°53'09.138"W	0.00	
5722.00†	10.700	352.995	5643.74	234.68	853.38	-139.05	40°27'50.733"N	104°53'09.167"W	0.00	
5822.00†	10.700	352.995	5742.00	239.01	871.81	-141.32	40°27'50.915"N	104°53'09.196"W	0.00	
5922.00†	10.700	352.995	5840.26	243.35	890.24	-143.58	40°27'51.097"N	104°53'09.226"W	0.00	
6022.00†	10.700	352.995	5938.53	247.68	908.66	-145.84	40°27'51.279"N	104°53'09.255"W	0.00	
6122.00†	10.700	352.995	6036.79	252.02	927.09	-148.11	40°27'51.461"N	104°53'09.284"W	0.00	
6222.00†	10.700	352.995	6135.05	256.35	945.52	-150.37	40°27'51.643"N	104°53'09.313"W	0.00	
6322.00†	10.700	352.995	6233.31	260.68	963.95	-152.64	40°27'51.825"N	104°53'09.343"W	0.00	
6422.00†	10.700	352.995	6331.57	265.02	982.38	-154.90	40°27'52.007"N	104°53'09.372"W	0.00	
6481.09	10.700	352.995	6389.63	267.58	993.27	-156.24	40°27'52.115"N	104°53'09.389"W	0.00	End of Tangent
6522.00†	11.897	332.902	6429.76	270.80	1000.79	-158.62	40°27'52.189"N	104°53'09.420"W	10.00	
6622.00†	18.627	303.819	6526.32	290.74	1018.90	-176.63	40°27'52.368"N	104°53'09.653"W	10.00	
6722.00†	27.386	291.236	6618.33	327.26	1036.17	-211.43	40°27'52.539"N	104°53'10.103"W	10.00	
6822.00†	36.750	284.557	6703.00	379.26	1052.06	-261.95	40°27'52.696"N	104°53'10.757"W	10.00	
6922.00†	46.351	280.317	6777.77	445.15	1066.09	-326.66	40°27'52.835"N	104°53'11.594"W	10.00	
7022.00†	56.065	277.261	6840.35	522.92	1077.85	-403.60	40°27'52.951"N	104°53'12.590"W	10.00	
7122.00†	65.840	274.838	6888.85	610.23	1086.96	-490.43	40°27'53.041"N	104°53'13.713"W	10.00	
7222.00†	75.646	272.763	6921.79	704.40	1093.16	-584.51	40°27'53.102"N	104°53'14.930"W	10.00	
7322.00†	85.470	270.863	6938.18	802.59	1096.25	-682.98	40°27'53.133"N	104°53'16.204"W	10.00	
7368.09	90.000	270.012	6940.00 ¹	848.38	1096.60	-729.03	40°27'53.136"N	104°53'16.800"W	10.00	End of 3D Arc
7422.00†	90.000	270.012	6940.00	901.94	1096.61	-782.93	40°27'53.136"N	104°53'17.497"W	0.00	
7522.00†	90.000	270.012	6940.00	1001.30	1096.63	-882.93	40°27'53.136"N	104°53'18.791"W	0.00	
7622.00†	90.000	270.012	6940.00	1100.66	1096.66	-982.93	40°27'53.136"N	104°53'20.085"W	0.00	
7722.00†	90.000	270.012	6940.00	1200.02	1096.68	-1082.93	40°27'53.137"N	104°53'21.379"W	0.00	
7822.00†	90.000	270.012	6940.00	1299.38	1096.70	-1182.93	40°27'53.137"N	104°53'22.673"W	0.00	
7922.00†	90.000	270.012	6940.00	1398.74	1096.72	-1282.93	40°27'53.137"N	104°53'23.966"W	0.00	
8022.00†	90.000	270.012	6940.00	1498.11	1096.74	-1382.93	40°27'53.137"N	104°53'25.260"W	0.00	



Planned Wellpath Report

KODAK 3 PWP (REV-A.0)

Page 5 of 9



REFERENCE WELLPATH IDENTIFICATION

Operator	EXTRACTION OIL & GAS	Slot	SLOT#02 KODAK 3 (1245'FNL & 1043'FWL, SEC.27)
Area	COLORADO	Well	KODAK 3
Field	WELD COUNTY (NAD83/TRUE NORTH)	Wellbore	KODAK 3 PWB
Facility	SEC.27-T6N-R67W		

WELLPATH DATA (173 stations) † = interpolated/extrapolated station

MD [ft]	Inclination [°]	Azimuth [°]	TVD [ft]	Vert Sect [ft]	North [ft]	East [ft]	Latitude	Longitude	DLS [°/100ft]	Comments
8122.00†	90.000	270.012	6940.00	1597.47	1096.76	-1482.93	40°27'53.137"N	104°53'26.554"W	0.00	
8222.00†	90.000	270.012	6940.00	1696.83	1096.78	-1582.93	40°27'53.137"N	104°53'27.848"W	0.00	
8322.00†	90.000	270.012	6940.00	1796.19	1096.80	-1682.93	40°27'53.138"N	104°53'29.141"W	0.00	
8422.00†	90.000	270.012	6940.00	1895.55	1096.82	-1782.93	40°27'53.138"N	104°53'30.435"W	0.00	
8522.00†	90.000	270.012	6940.00	1994.91	1096.85	-1882.93	40°27'53.138"N	104°53'31.729"W	0.00	
8622.00†	90.000	270.012	6940.00	2094.27	1096.87	-1982.93	40°27'53.138"N	104°53'33.023"W	0.00	
8722.00†	90.000	270.012	6940.00	2193.63	1096.89	-2082.93	40°27'53.138"N	104°53'34.317"W	0.00	
8822.00†	90.000	270.012	6940.00	2292.99	1096.91	-2182.93	40°27'53.138"N	104°53'35.610"W	0.00	
8922.00†	90.000	270.012	6940.00	2392.35	1096.93	-2282.93	40°27'53.138"N	104°53'36.904"W	0.00	
9022.00†	90.000	270.012	6940.00	2491.71	1096.95	-2382.93	40°27'53.138"N	104°53'38.198"W	0.00	
9122.00†	90.000	270.012	6940.00	2591.07	1096.97	-2482.93	40°27'53.139"N	104°53'39.492"W	0.00	
9222.00†	90.000	270.012	6940.00	2690.43	1096.99	-2582.93	40°27'53.139"N	104°53'40.785"W	0.00	
9322.00†	90.000	270.012	6940.00	2789.79	1097.01	-2682.93	40°27'53.139"N	104°53'42.079"W	0.00	
9422.00†	90.000	270.012	6940.00	2889.16	1097.03	-2782.93	40°27'53.139"N	104°53'43.373"W	0.00	
9522.00†	90.000	270.012	6940.00	2988.52	1097.06	-2882.93	40°27'53.139"N	104°53'44.667"W	0.00	
9622.00†	90.000	270.012	6940.00	3087.88	1097.08	-2982.93	40°27'53.139"N	104°53'45.961"W	0.00	
9722.00†	90.000	270.012	6940.00	3187.24	1097.10	-3082.93	40°27'53.139"N	104°53'47.254"W	0.00	
9822.00†	90.000	270.012	6940.00	3286.60	1097.12	-3182.93	40°27'53.139"N	104°53'48.548"W	0.00	
9922.00†	90.000	270.012	6940.00	3385.96	1097.14	-3282.93	40°27'53.139"N	104°53'49.842"W	0.00	
10022.00†	90.000	270.012	6940.00	3485.32	1097.16	-3382.93	40°27'53.139"N	104°53'51.136"W	0.00	
10122.00†	90.000	270.012	6940.00	3584.68	1097.18	-3482.93	40°27'53.139"N	104°53'52.429"W	0.00	
10222.00†	90.000	270.012	6940.00	3684.04	1097.20	-3582.93	40°27'53.139"N	104°53'53.723"W	0.00	
10322.00†	90.000	270.012	6940.00	3783.40	1097.22	-3682.93	40°27'53.140"N	104°53'55.017"W	0.00	
10422.00†	90.000	270.012	6940.00	3882.76	1097.24	-3782.93	40°27'53.140"N	104°53'56.311"W	0.00	
10522.00†	90.000	270.012	6940.00	3982.12	1097.27	-3882.93	40°27'53.140"N	104°53'57.605"W	0.00	
10622.00†	90.000	270.012	6940.00	4081.48	1097.29	-3982.93	40°27'53.140"N	104°53'58.898"W	0.00	
10722.00†	90.000	270.012	6940.00	4180.84	1097.31	-4082.93	40°27'53.140"N	104°54'00.192"W	0.00	
10822.00†	90.000	270.012	6940.00	4280.21	1097.33	-4182.93	40°27'53.140"N	104°54'01.486"W	0.00	
10922.00†	90.000	270.012	6940.00	4379.57	1097.35	-4282.93	40°27'53.140"N	104°54'02.780"W	0.00	
11022.00†	90.000	270.012	6940.00	4478.93	1097.37	-4382.93	40°27'53.140"N	104°54'04.073"W	0.00	



Planned Wellpath Report

KODAK 3 PWP (REV-A.0)

Page 6 of 9



REFERENCE WELLPATH IDENTIFICATION

Operator	EXTRACTION OIL & GAS	Slot	SLOT#02 KODAK 3 (1245'FNL & 1043'FWL, SEC.27)
Area	COLORADO	Well	KODAK 3
Field	WELD COUNTY (NAD83/TRUE NORTH)	Wellbore	KODAK 3 PWB
Facility	SEC.27-T6N-R67W		

WELLPATH DATA (173 stations) † = interpolated/extrapolated station

MD [ft]	Inclination [°]	Azimuth [°]	TVD [ft]	Vert Sect [ft]	North [ft]	East [ft]	Latitude	Longitude	DLS [°/100ft]	Comments
11122.00†	90.000	270.012	6940.00	4578.29	1097.39	-4482.93	40°27'53.140"N	104°54'05.367"W	0.00	
11222.00†	90.000	270.012	6940.00	4677.65	1097.41	-4582.93	40°27'53.140"N	104°54'06.661"W	0.00	
11322.00†	90.000	270.012	6940.00	4777.01	1097.43	-4682.93	40°27'53.140"N	104°54'07.955"W	0.00	
11422.00†	90.000	270.012	6940.00	4876.37	1097.45	-4782.93	40°27'53.140"N	104°54'09.249"W	0.00	
11522.00†	90.000	270.012	6940.00	4975.73	1097.48	-4882.93	40°27'53.140"N	104°54'10.542"W	0.00	
11622.00†	90.000	270.012	6940.00	5075.09	1097.50	-4982.93	40°27'53.140"N	104°54'11.836"W	0.00	
11722.00†	90.000	270.012	6940.00	5174.45	1097.52	-5082.93	40°27'53.140"N	104°54'13.130"W	0.00	
11822.00†	90.000	270.012	6940.00	5273.81	1097.54	-5182.93	40°27'53.140"N	104°54'14.424"W	0.00	
11922.00†	90.000	270.012	6940.00	5373.17	1097.56	-5282.93	40°27'53.140"N	104°54'15.717"W	0.00	
12022.00†	90.000	270.012	6940.00	5472.53	1097.58	-5382.93	40°27'53.140"N	104°54'17.011"W	0.00	
12122.00†	90.000	270.012	6940.00	5571.89	1097.60	-5482.93	40°27'53.140"N	104°54'18.305"W	0.00	
12222.00†	90.000	270.012	6940.00	5671.26	1097.62	-5582.93	40°27'53.140"N	104°54'19.599"W	0.00	
12322.00†	90.000	270.012	6940.00	5770.62	1097.64	-5682.93	40°27'53.140"N	104°54'20.893"W	0.00	
12422.00†	90.000	270.012	6940.00	5869.98	1097.67	-5782.93	40°27'53.140"N	104°54'22.186"W	0.00	
12522.00†	90.000	270.012	6940.00	5969.34	1097.69	-5882.93	40°27'53.140"N	104°54'23.480"W	0.00	
12622.00†	90.000	270.012	6940.00	6068.70	1097.71	-5982.93	40°27'53.140"N	104°54'24.774"W	0.00	
12722.00†	90.000	270.012	6940.00	6168.06	1097.73	-6082.93	40°27'53.140"N	104°54'26.068"W	0.00	
12822.00†	90.000	270.012	6940.00	6267.42	1097.75	-6182.93	40°27'53.140"N	104°54'27.361"W	0.00	
12922.00†	90.000	270.012	6940.00	6366.78	1097.77	-6282.93	40°27'53.140"N	104°54'28.655"W	0.00	
13022.00†	90.000	270.012	6940.00	6466.14	1097.79	-6382.93	40°27'53.140"N	104°54'29.949"W	0.00	
13122.00†	90.000	270.012	6940.00	6565.50	1097.81	-6482.93	40°27'53.140"N	104°54'31.243"W	0.00	
13222.00†	90.000	270.012	6940.00	6664.86	1097.83	-6582.93	40°27'53.140"N	104°54'32.537"W	0.00	
13322.00†	90.000	270.012	6940.00	6764.22	1097.85	-6682.93	40°27'53.140"N	104°54'33.830"W	0.00	
13422.00†	90.000	270.012	6940.00	6863.58	1097.88	-6782.93	40°27'53.139"N	104°54'35.124"W	0.00	
13522.00†	90.000	270.012	6940.00	6962.94	1097.90	-6882.93	40°27'53.139"N	104°54'36.418"W	0.00	
13622.00†	90.000	270.012	6940.00	7062.30	1097.92	-6982.93	40°27'53.139"N	104°54'37.712"W	0.00	
13722.00†	90.000	270.012	6940.00	7161.67	1097.94	-7082.93	40°27'53.139"N	104°54'39.005"W	0.00	
13822.00†	90.000	270.012	6940.00	7261.03	1097.96	-7182.93	40°27'53.139"N	104°54'40.299"W	0.00	
13922.00†	90.000	270.012	6940.00	7360.39	1097.98	-7282.93	40°27'53.139"N	104°54'41.593"W	0.00	
14022.00†	90.000	270.012	6940.00	7459.75	1098.00	-7382.93	40°27'53.139"N	104°54'42.887"W	0.00	



Planned Wellpath Report

KODAK 3 PWP (REV-A.0)

Page 7 of 9



REFERENCE WELLPATH IDENTIFICATION

Operator	EXTRACTION OIL & GAS	Slot	SLOT#02 KODAK 3 (1245'FNL & 1043'FWL, SEC.27)
Area	COLORADO	Well	KODAK 3
Field	WELD COUNTY (NAD83/TRUE NORTH)	Wellbore	KODAK 3 PWB
Facility	SEC.27-T6N-R67W		

WELLPATH DATA (173 stations) † = interpolated/extrapolated station

MD [ft]	Inclination [°]	Azimuth [°]	TVD [ft]	Vert Sect [ft]	North [ft]	East [ft]	Latitude	Longitude	DLS [°/100ft]	Comments
14122.00†	90.000	270.012	6940.00	7559.11	1098.02	-7482.93	40°27'53.139"N	104°54'44.181"W	0.00	
14222.00†	90.000	270.012	6940.00	7658.47	1098.04	-7582.93	40°27'53.139"N	104°54'45.474"W	0.00	
14322.00†	90.000	270.012	6940.00	7757.83	1098.06	-7682.93	40°27'53.139"N	104°54'46.768"W	0.00	
14422.00†	90.000	270.012	6940.00	7857.19	1098.09	-7782.93	40°27'53.139"N	104°54'48.062"W	0.00	
14522.00†	90.000	270.012	6940.00	7956.55	1098.11	-7882.93	40°27'53.139"N	104°54'49.356"W	0.00	
14622.00†	90.000	270.012	6940.00	8055.91	1098.13	-7982.93	40°27'53.138"N	104°54'50.649"W	0.00	
14722.00†	90.000	270.012	6940.00	8155.27	1098.15	-8082.93	40°27'53.138"N	104°54'51.943"W	0.00	
14822.00†	90.000	270.012	6940.00	8254.63	1098.17	-8182.93	40°27'53.138"N	104°54'53.237"W	0.00	
14922.00†	90.000	270.012	6940.00	8353.99	1098.19	-8282.93	40°27'53.138"N	104°54'54.531"W	0.00	
15022.00†	90.000	270.012	6940.00	8453.35	1098.21	-8382.93	40°27'53.138"N	104°54'55.825"W	0.00	
15122.00†	90.000	270.012	6940.00	8552.72	1098.23	-8482.93	40°27'53.138"N	104°54'57.118"W	0.00	
15222.00†	90.000	270.012	6940.00	8652.08	1098.25	-8582.93	40°27'53.138"N	104°54'58.412"W	0.00	
15322.00†	90.000	270.012	6940.00	8751.44	1098.28	-8682.93	40°27'53.138"N	104°54'59.706"W	0.00	
15422.00†	90.000	270.012	6940.00	8850.80	1098.30	-8782.93	40°27'53.137"N	104°55'01.000"W	0.00	
15522.00†	90.000	270.012	6940.00	8950.16	1098.32	-8882.93	40°27'53.137"N	104°55'02.293"W	0.00	
15622.00†	90.000	270.012	6940.00	9049.52	1098.34	-8982.93	40°27'53.137"N	104°55'03.587"W	0.00	
15722.00†	90.000	270.012	6940.00	9148.88	1098.36	-9082.93	40°27'53.137"N	104°55'04.881"W	0.00	
15822.00†	90.000	270.012	6940.00	9248.24	1098.38	-9182.93	40°27'53.137"N	104°55'06.175"W	0.00	
15922.00†	90.000	270.012	6940.00	9347.60	1098.40	-9282.93	40°27'53.137"N	104°55'07.469"W	0.00	
16022.00†	90.000	270.012	6940.00	9446.96	1098.42	-9382.93	40°27'53.136"N	104°55'08.762"W	0.00	
16122.00†	90.000	270.012	6940.00	9546.32	1098.44	-9482.93	40°27'53.136"N	104°55'10.056"W	0.00	
16222.00†	90.000	270.012	6940.00	9645.68	1098.46	-9582.93	40°27'53.136"N	104°55'11.350"W	0.00	
16288.95	90.000	270.012	6940.00 ²	9712.20	1098.48	-9649.88	40°27'53.136"N	104°55'12.216"W	0.00	End of Tangent

HOLE & CASING SECTIONS - Ref Wellbore: KODAK 3 PWB Ref Wellpath: KODAK 3 PWP (REV-A.0)

String/Diameter	Start MD [ft]	End MD [ft]	Interval [ft]	Start TVD [ft]	End TVD [ft]	Start N/S [ft]	Start E/W [ft]	End N/S [ft]	End E/W [ft]
7in Casing Intermediate	22.00	7370.11	7348.11	22.00	6940.00	0.00	0.00	1096.60	-731.04



Planned Wellpath Report

KODAK 3 PWP (REV-A.0)

Page 8 of 9



REFERENCE WELLPATH IDENTIFICATION

Operator	EXTRACTION OIL & GAS	Slot	SLOT#02 KODAK 3 (1245'FNL & 1043'FWL, SEC.27)
Area	COLORADO	Well	KODAK 3
Field	WELD COUNTY (NAD83/TRUE NORTH)	Wellbore	KODAK 3 PWB
Facility	SEC.27-T6N-R67W		

TARGETS

Name	MD [ft]	TVD [ft]	North [ft]	East [ft]	Grid East [US ft]	Grid North [US ft]	Latitude	Longitude	Shape
SEC.27-T6N-R67W		0.00	14.57	0.00	3171020.64	1411663.14	40°27'42.444"N	104°53'07.368"W	polygon
SEC.28-T6N-R67W		0.00	14.57	0.00	3171020.64	1411663.14	40°27'42.444"N	104°53'07.368"W	polygon
SEC.29-T6N-R67W		0.00	14.57	0.00	3171020.64	1411663.14	40°27'42.444"N	104°53'07.368"W	polygon
2) KODAK 3 BHL ON PLAT REV-1 (129'FNL & 1780'FWL, SEC.29)	16288.95	6940.00	1098.48	-9649.88	3161363.85	1412680.10	40°27'53.136"N	104°55'12.216"W	point
KODAK 3 DRILLING CORRIDOR (60')		6940.00	0.00	0.00	3171020.75	1411648.57	40°27'42.300"N	104°53'07.368"W	polygon
1) KODAK 3 LANDING POINT	7368.09	6940.00	1096.60	-729.03	3170284.16	1412740.05	40°27'53.136"N	104°53'16.800"W	point

SURVEY PROGRAM - Ref Wellbore: KODAK 3 PWB Ref Wellpath: KODAK 3 PWP (REV-A.0)

Start MD [ft]	End MD [ft]	Positional Uncertainty Model	Log Name/Comment	Wellbore
22.00	17000.00	NaviTrak (Standard)		KODAK 3 PWB



Planned Wellpath Report

KODAK 3 PWP (REV-A.0)

Page 9 of 9



REFERENCE WELLPATH IDENTIFICATION

Operator	EXTRACTION OIL & GAS	Slot	SLOT#02 KODAK 3 (1245'FNL & 1043'FWL, SEC.27)
Area	COLORADO	Well	KODAK 3
Field	WELD COUNTY (NAD83/TRUE NORTH)	Wellbore	KODAK 3 PWB
Facility	SEC.27-T6N-R67W		

DESIGN COMMENTS

MD [ft]	Inclination [°]	Azimuth [°]	TVD [ft]	Comment
22.00	0.000	340.000	22.00	Tie On
200.00	0.000	340.000	200.00	End of Tangent
300.00	1.000	340.000	299.99	End of Build
850.09	1.000	340.000	850.00	End of Tangent
1300.09	10.000	340.000	1297.47	End of Build
1800.09	10.000	340.000	1789.87	End of Tangent
1921.67	10.700	352.995	1909.49	End of 3D Arc
6481.09	10.700	352.995	6389.63	End of Tangent
7368.09	90.000	270.012	6940.00	End of 3D Arc
16288.95	90.000	270.012	6940.00	End of Tangent