

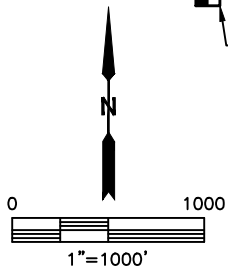
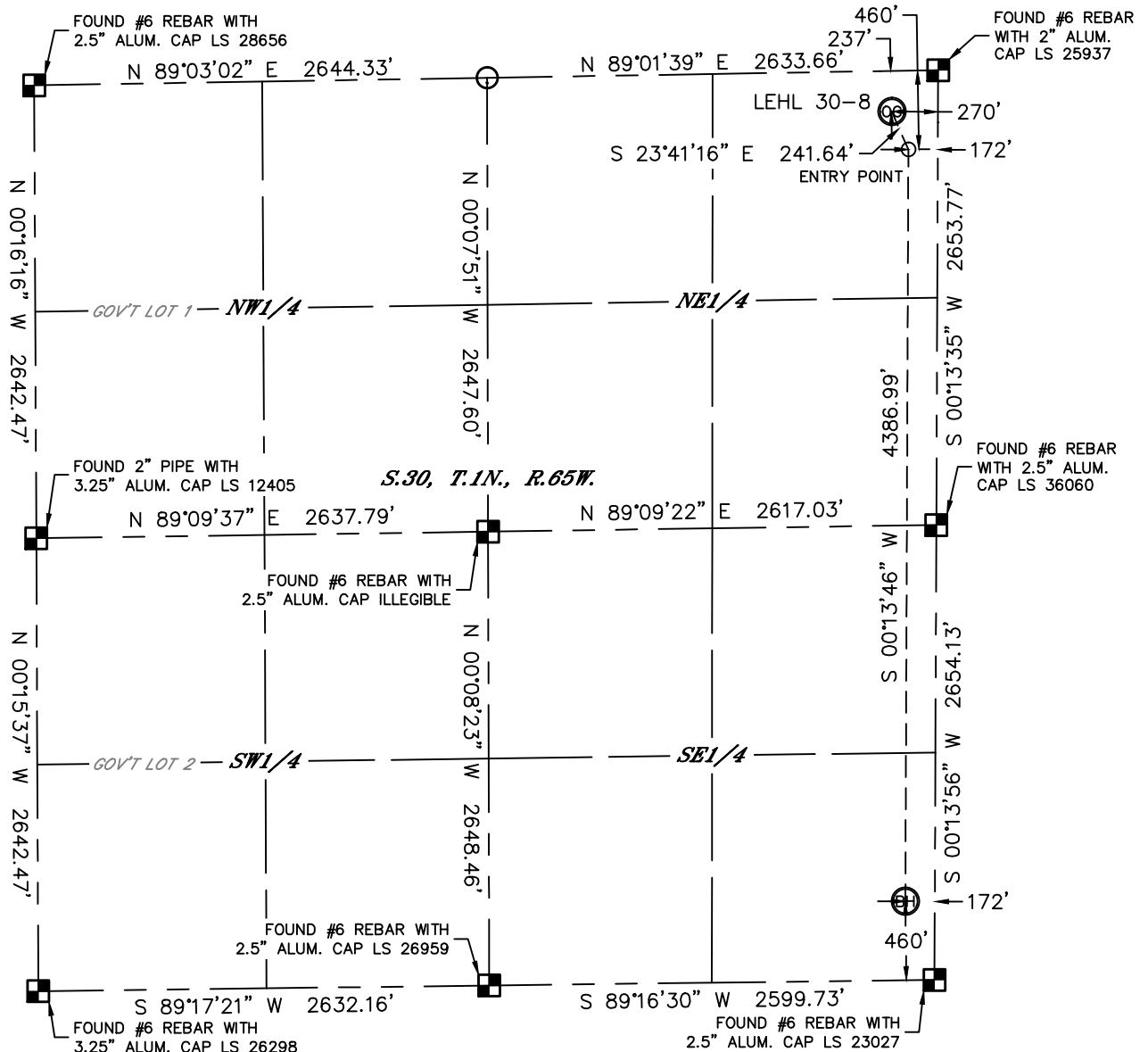


Lat40°, Inc. 1635 Foxtrail Drive, Suite 325 Loveland, CO 970-776-3321

WELL LOCATION CERTIFICATE

THIS MAP DOES NOT REPRESENT A BOUNDARY SURVEY

SECTION: 30
TOWNSHIP: 1N
RANGE: 65W



In accordance with a request from Frankie Martinez with HRM RESOURCES, LLC Lat40°, Inc. has determined the surface location of the LEHL 30-8 to be 237' from the NORTH line and 270' from the EAST line and the bottom hole to be 460' from the SOUTH line and 172' from the EAST line as measured at right angles from the section lines of Section 30, Township 1 North, Range 65 West of the Sixth Principal Meridian, County of Weld, State of Colorado.

I hereby state that this Well Location Certificate was prepared by me, or under my direct supervision, that the fieldwork was completed on 9/12/2014, for and on behalf of HRM RESOURCES, LLC. That this is not a Land Survey Plat or an Improvement Survey Plat, and that it is not to be relied upon for establishment of fence, building, or other future improvement lines.

SURFACE LOCATION

LAT: 40.02900°N
LONG: 104.69821°W
PDOP: 1.9
ELEV: 4974'
1/4,1/4: NE1/4NE1/4

BOTTOM HOLE

LAT: 40.01635°N
LONG: 104.69807°W
PDOP: 1.9
1/4,1/4: SE1/4SE1/4

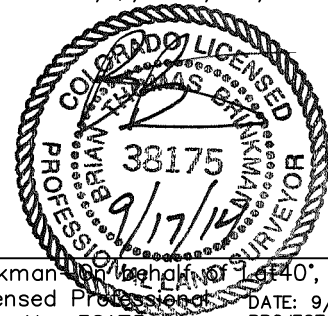
ENTRY POINT

LAT: 40.02839°N
LONG: 104.69787°W
1/4,1/4: NE1/4NE1/4

LEGEND

- = ALIQUOT MONUMENT AS DESCRIBED
- = CALCULATED POSITION

Brian T. Brinkman, Professional Land Surveyor No. 38175
Colorado Licensed Professional Land Surveyor
DATE: 9/16/2014
PROJECT#: 2013187

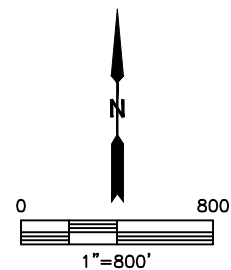
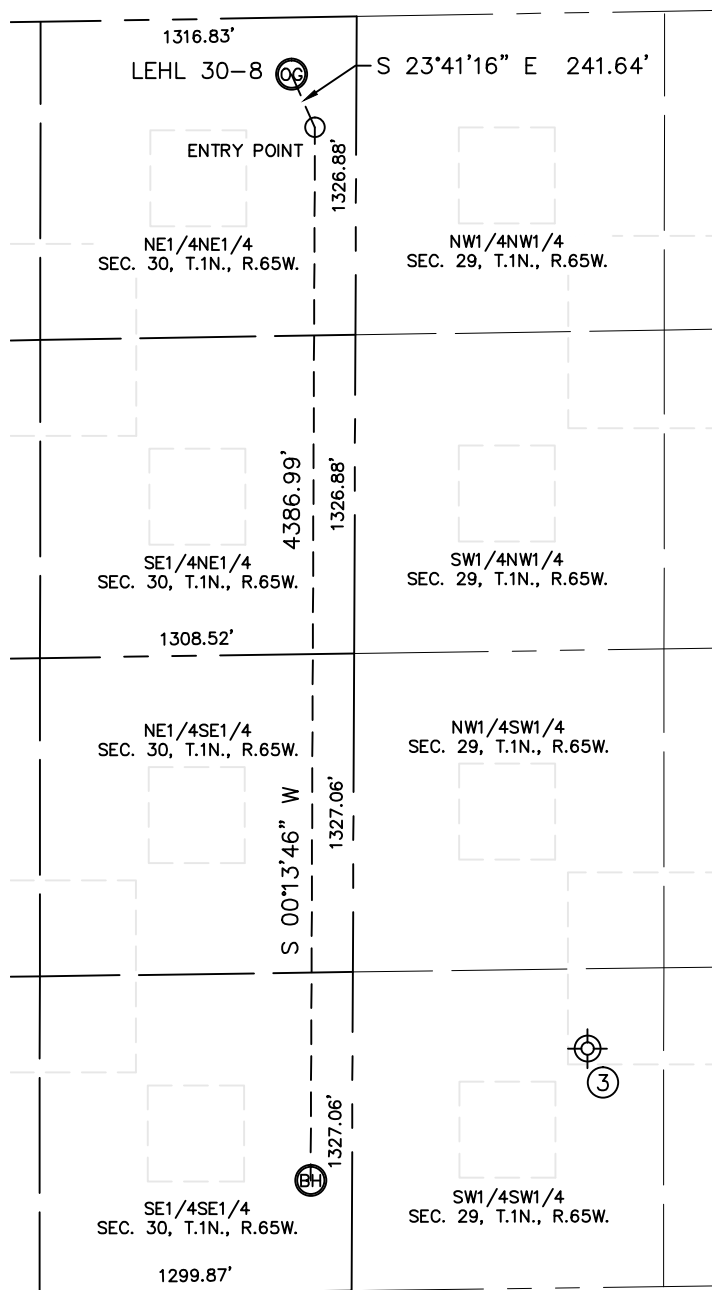


- NOTE:
- 1) Bearings shown are Grid Bearings of the Colorado State Plane Coordinate System, North Zone, North American Datum 1983/2007. The lineal dimensions as contained herein are based upon the "U.S. Survey Foot."
 - 2) Ground elevations are based on an observed GPS elevation (NAVD 1988 DATUM).
 - 3) IMPROVEMENTS: See LOCATION DRAWING for all visible improvements within 500' of disturbed area.
 - 4) SURFACE USE: CROP LAND
 - 5) INSTRUMENT OPERATOR: WYATT HALL
 - 6) NEAREST CULTURAL ITEMS:
BUILDING: ±454' SE
BUILDING UNIT: ±844' NW
HIGH OCCUPANCY BUILDING UNIT: 5280'+
DESIGNATED OUTSIDE ACTIVITY AREA: 5280'+
PUBLIC ROAD: 229' N (CR 6)
ABOVEGROUND UTILITY: 259' N
RAILROAD: ±2993' SE
PROPERTY LINE: 237' N

SITE SKETCH

LEHL 30-8

SECTION: 30
TOWNSHIP: 1N
RANGE: 65W



WELL NO.	WELL NAME	SHL FOOTAGE				SHL LAT°	SHL LONG°	PDOP	ELEV (FT.)	1/4/1/4
3	KILKER #1	990	FSL	990	FWL	40.01783	-104.69394	N/A	5007	SWSW

NOTE: THE ABANDONED WELL DATA SHOWN IN RED ABOVE WAS OBTAINED FROM COGCC SCOUT CARDS.

DATE: 9/16/2014
PROJECT#: 2013187