

CHI PROCESSED
TRIPLE COMBO

COMPANY Caerus Piceance, LLC.
WELL Island Ranch 24B-13
FIELD Parachute
COUNTY Garfield
STATE CO

Location Surface hole location:
 1334' FSL & 1055' FWL
 Bottom hole Location:
 0865' FSL & 1980' FWL

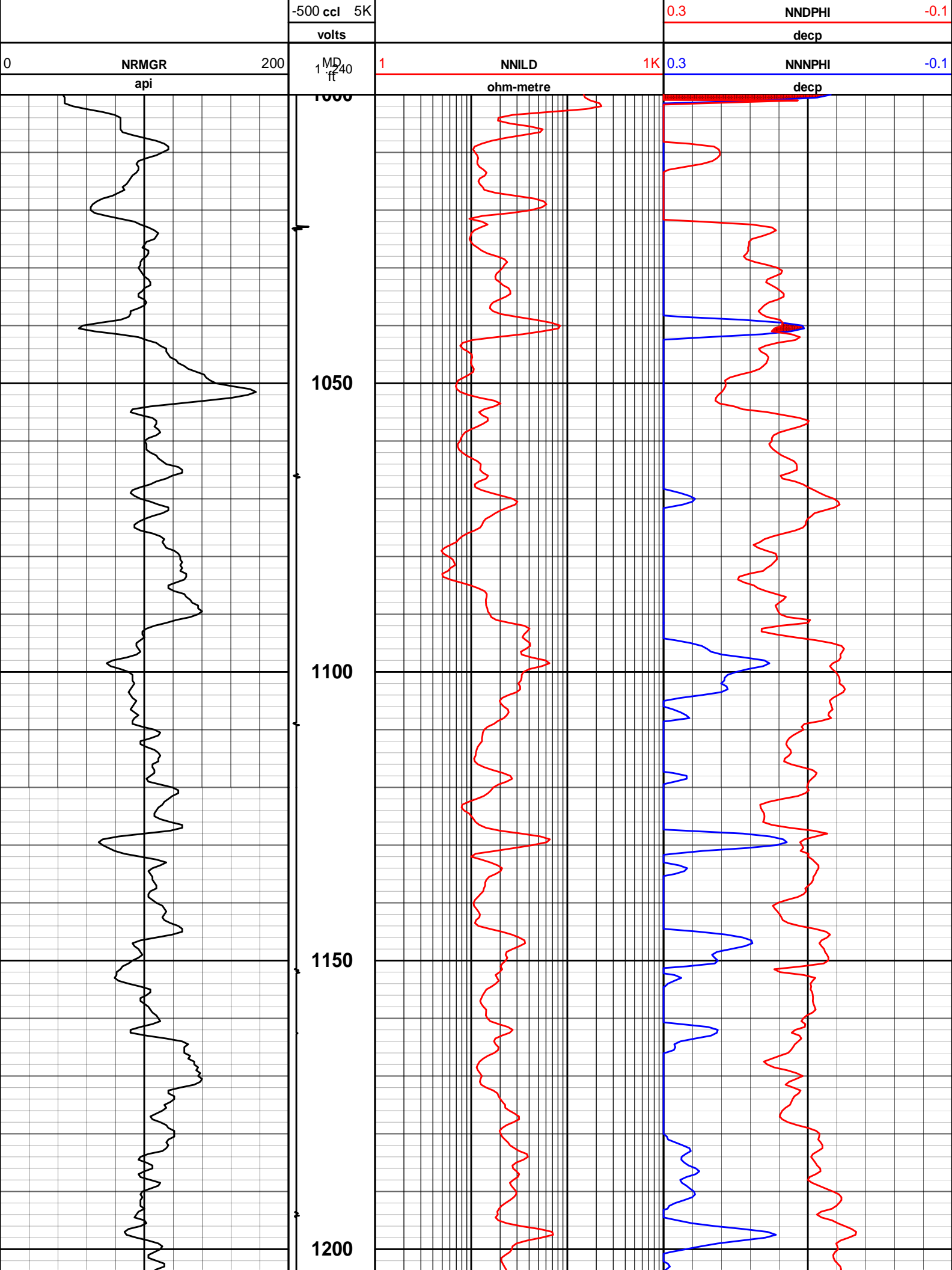
Elevations: K.B. 5080.00 ft D.F. 5080.00 ft G.L. 5056.00 ft

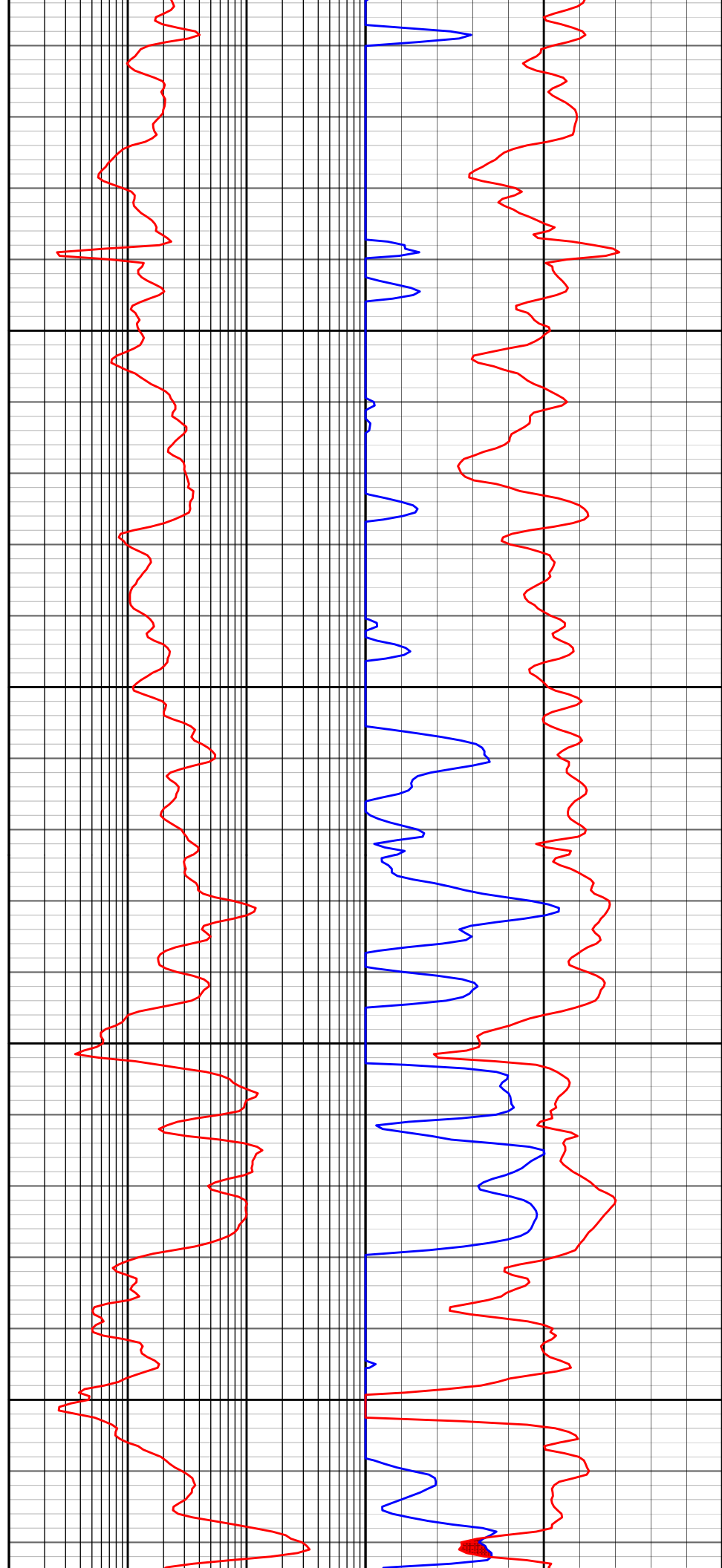
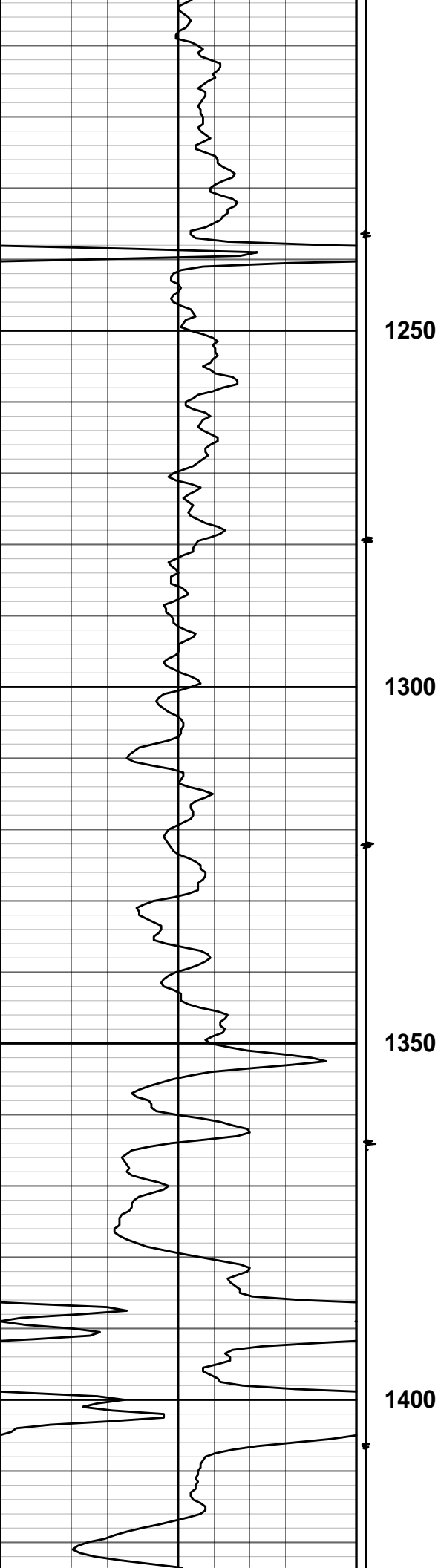
Date Processed	24-July-2014	Logs Processed	CHI
Job Number	20140786	Date Logged	
Interval Processed	1000'-5870'	Type Fluid in Hole	Water
Processed By	Philip Grant	Location	CO
Processed At	Denver FRS		

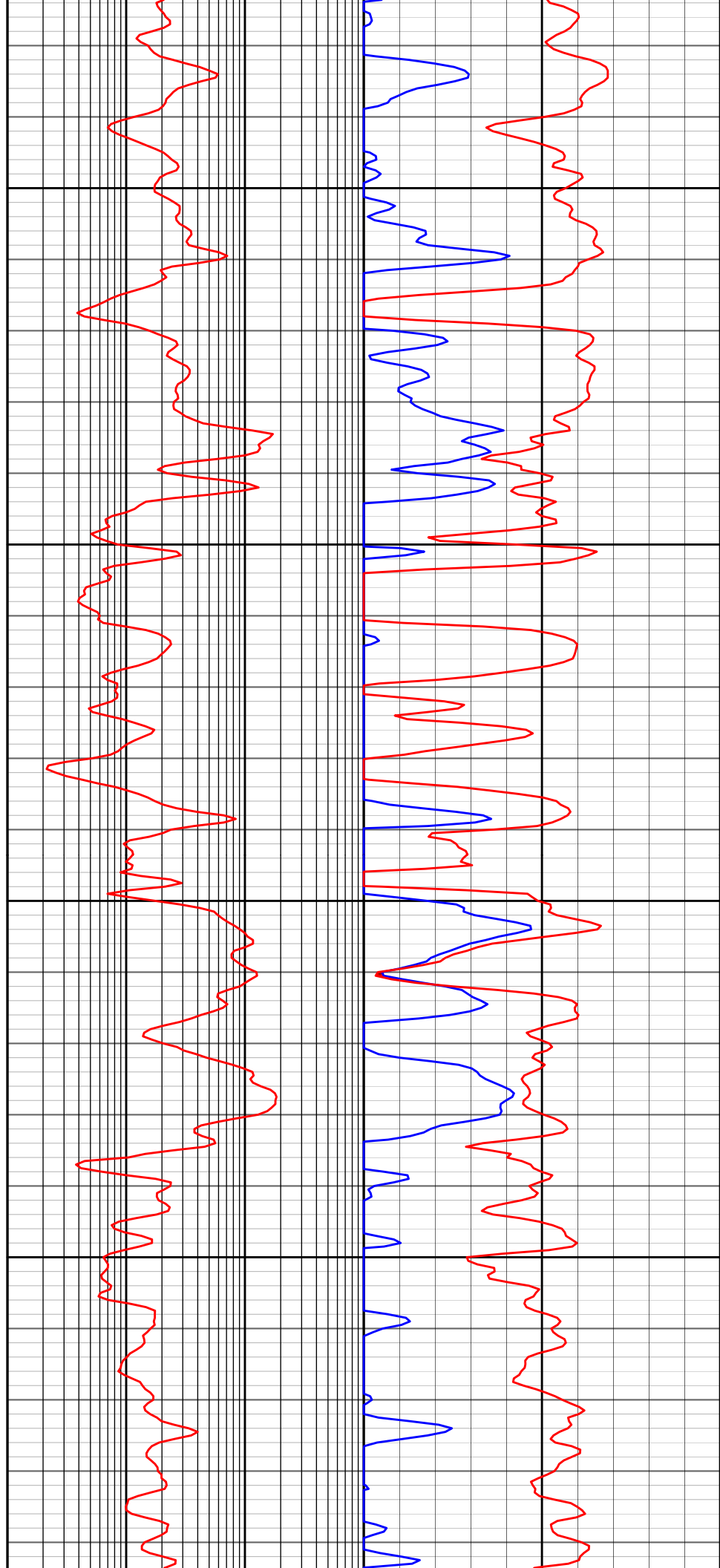
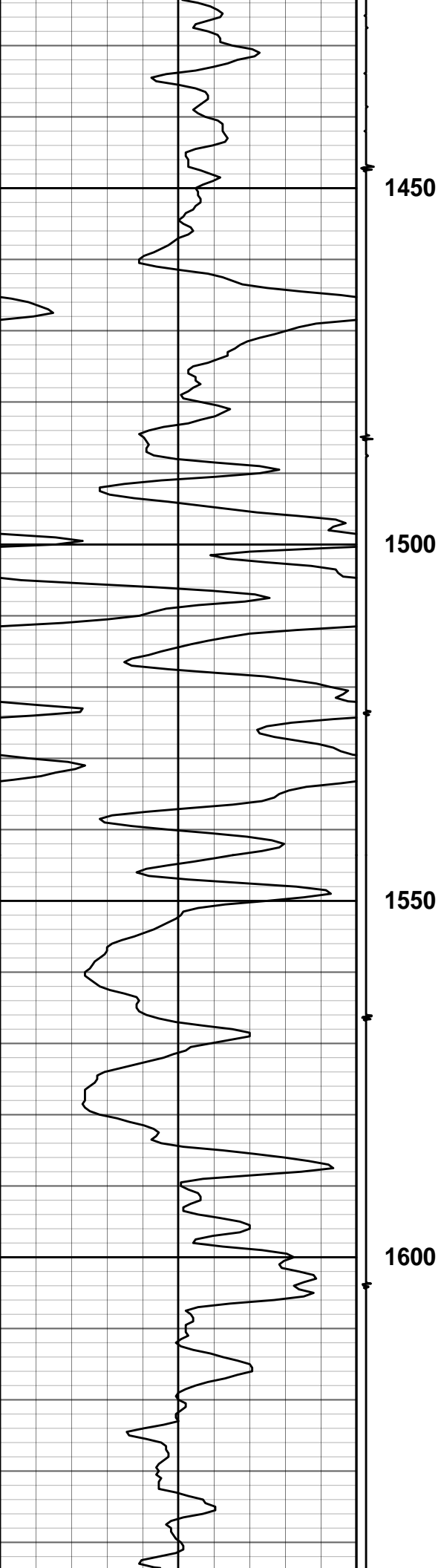
COMPUTER PROCESSED PRODUCT

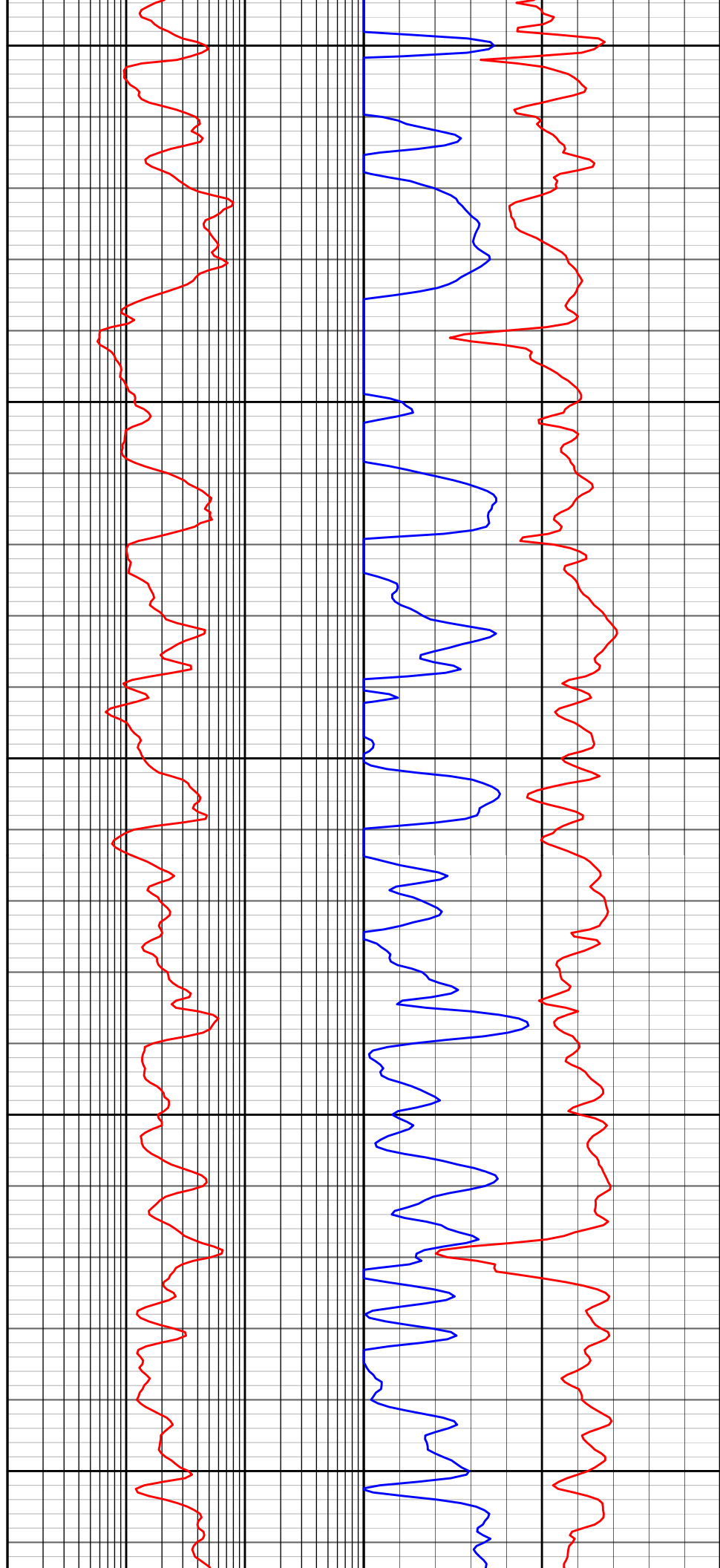
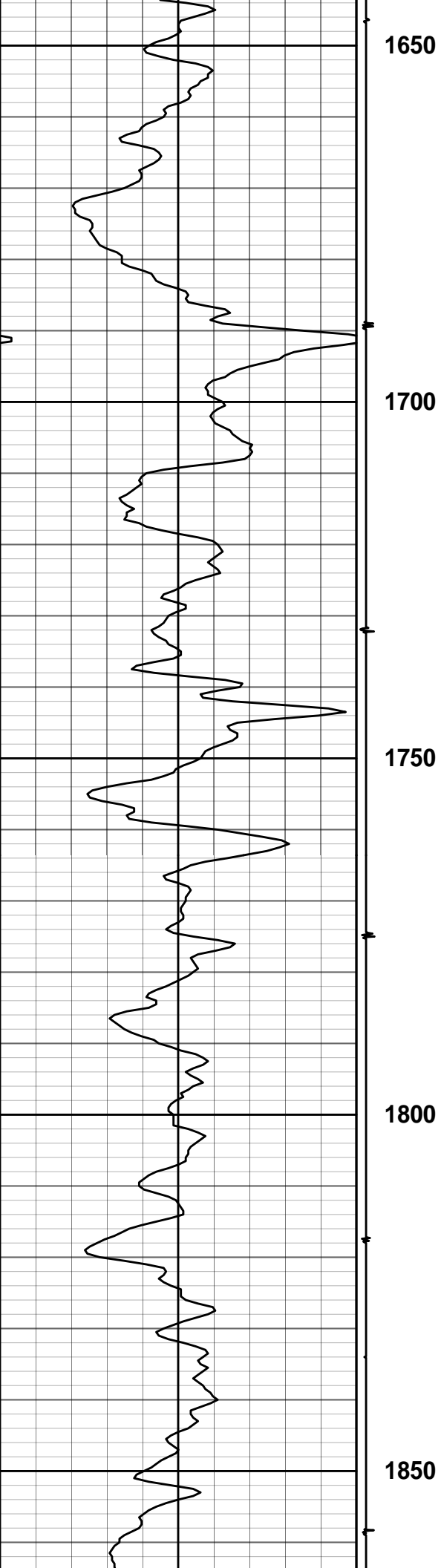
Fold here

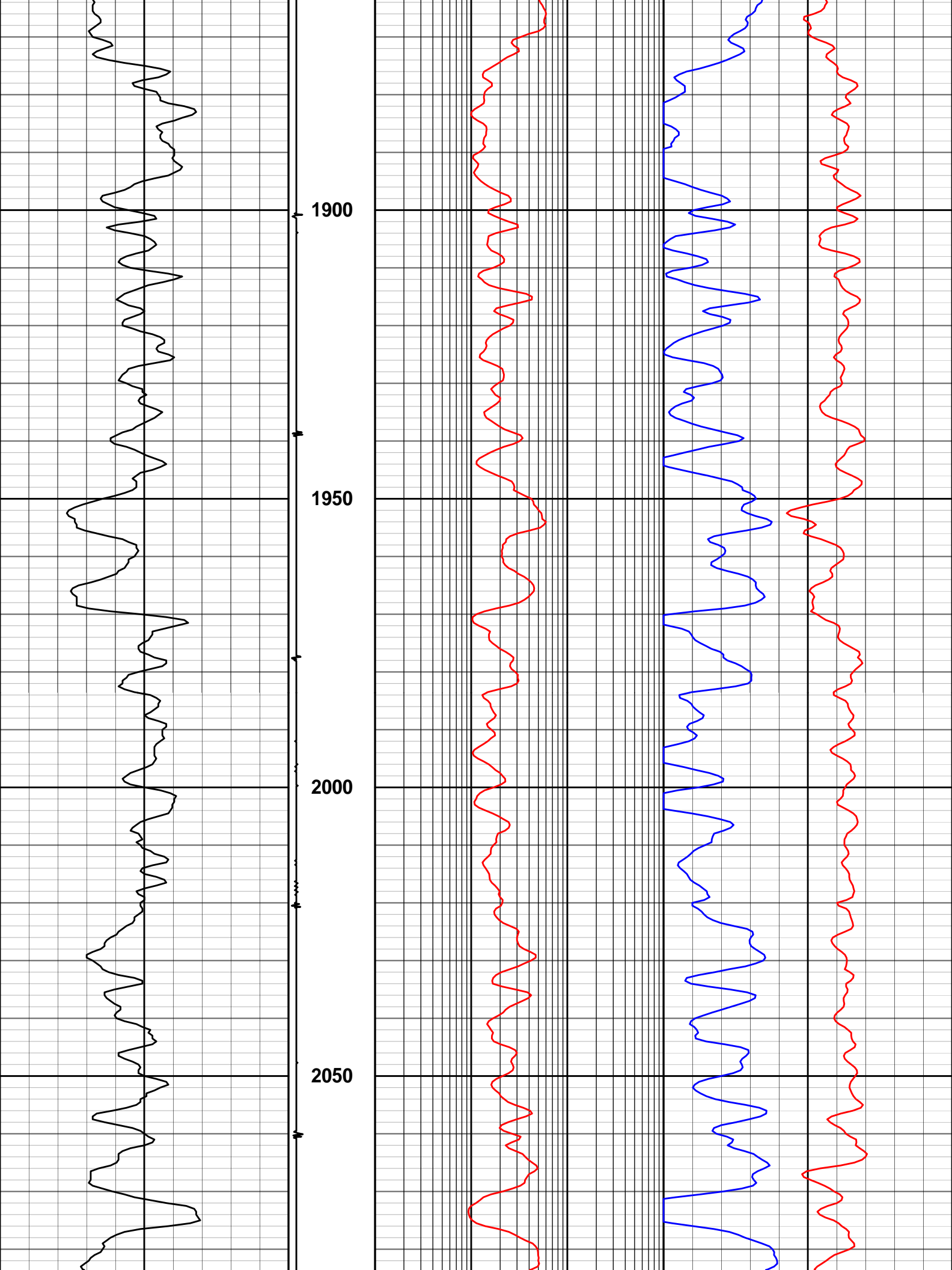
Service Ticket No.: 20140786		API Serial No.: 05-045-22394-0000		PGM Version:	
Logs Processed: CHI		Date Logged: 16-July-2014		Type Fluid In Hole: Water	
DIRECTIONAL INFORMATION					
Maximum Deviation		@		KOP @	
Remarks: FRS JOB: 20140786					
API: 05-045-22394					
NNDPHI CALCULATED FROM NNRHOB USING 2.68 MATRIX AND 1.00 FLUID DENSITY'S					
TRAINING AND OFFSET WELL: CAERUS, ISLAND RANCH 23D-13					
HALLIBURTON DOES NOT GUARANTEE THE ACCURACY OF ANY INTERPRETATION OF THE LOG DATA, CONVERSION OF LOG DATA TO PHYSICAL ROCK PARAMETERS OR RECOMMENDATIONS WHICH MAY BE GIVEN BY HALLIBURTON PERSONNEL OR WHICH APPEAR ON THE LOG OR IN ANY OTHER FORM. ANY USER OF SUCH DATA, INTERPRETATIONS, CONVERSIONS, OR RECOMMENDATIONS AGREES THAT HALLIBURTON IS NOT RESPONSIBLE EXCEPT WHERE DUE TO GROSS NEGLIGENCE OR WILLFUL MISCONDUCT, FOR ANY LOSS, DAMAGES, OR EXPENSES RESULTING FROM THE USE THEREOF.					
HALLIBURTON					

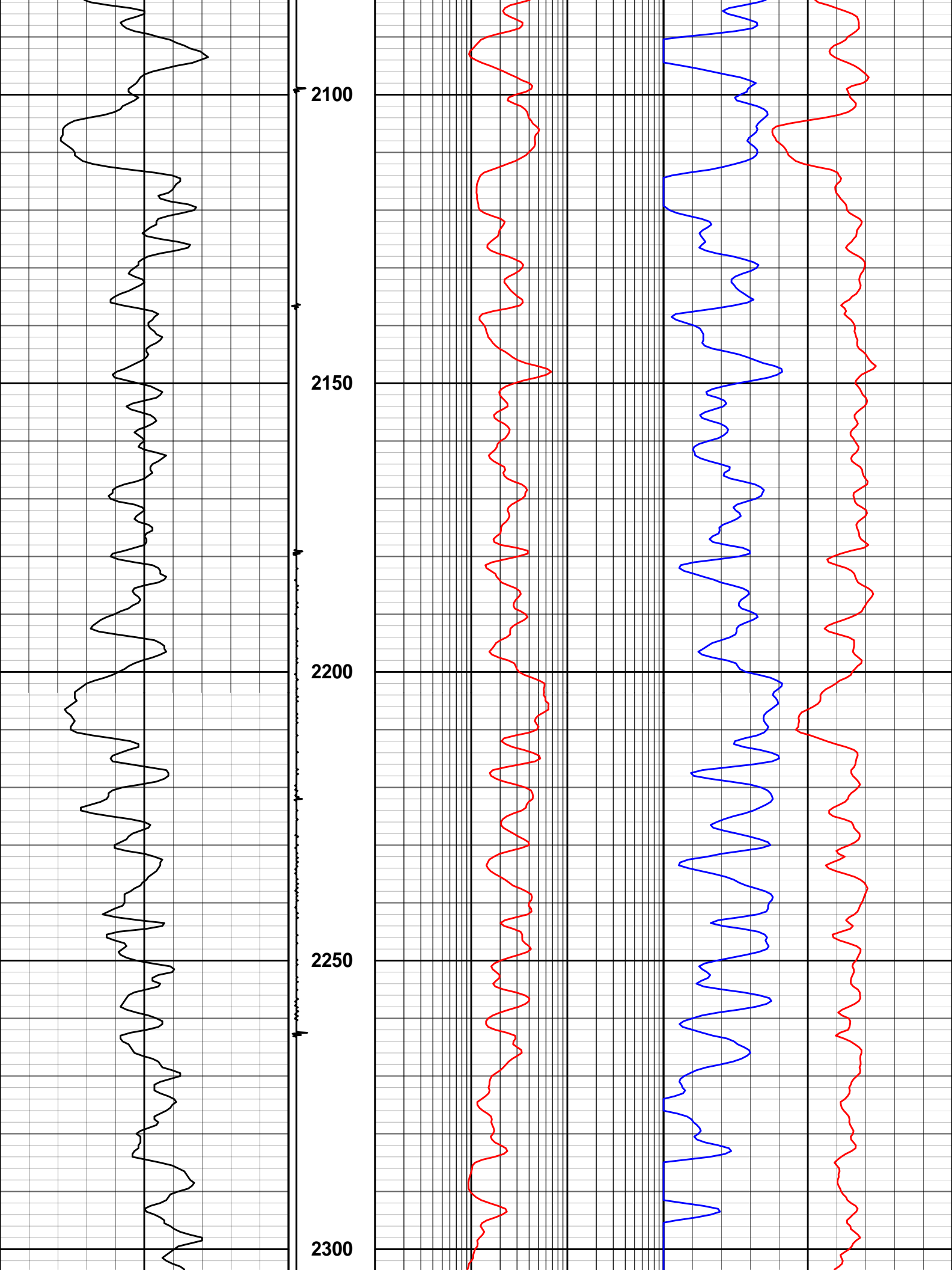


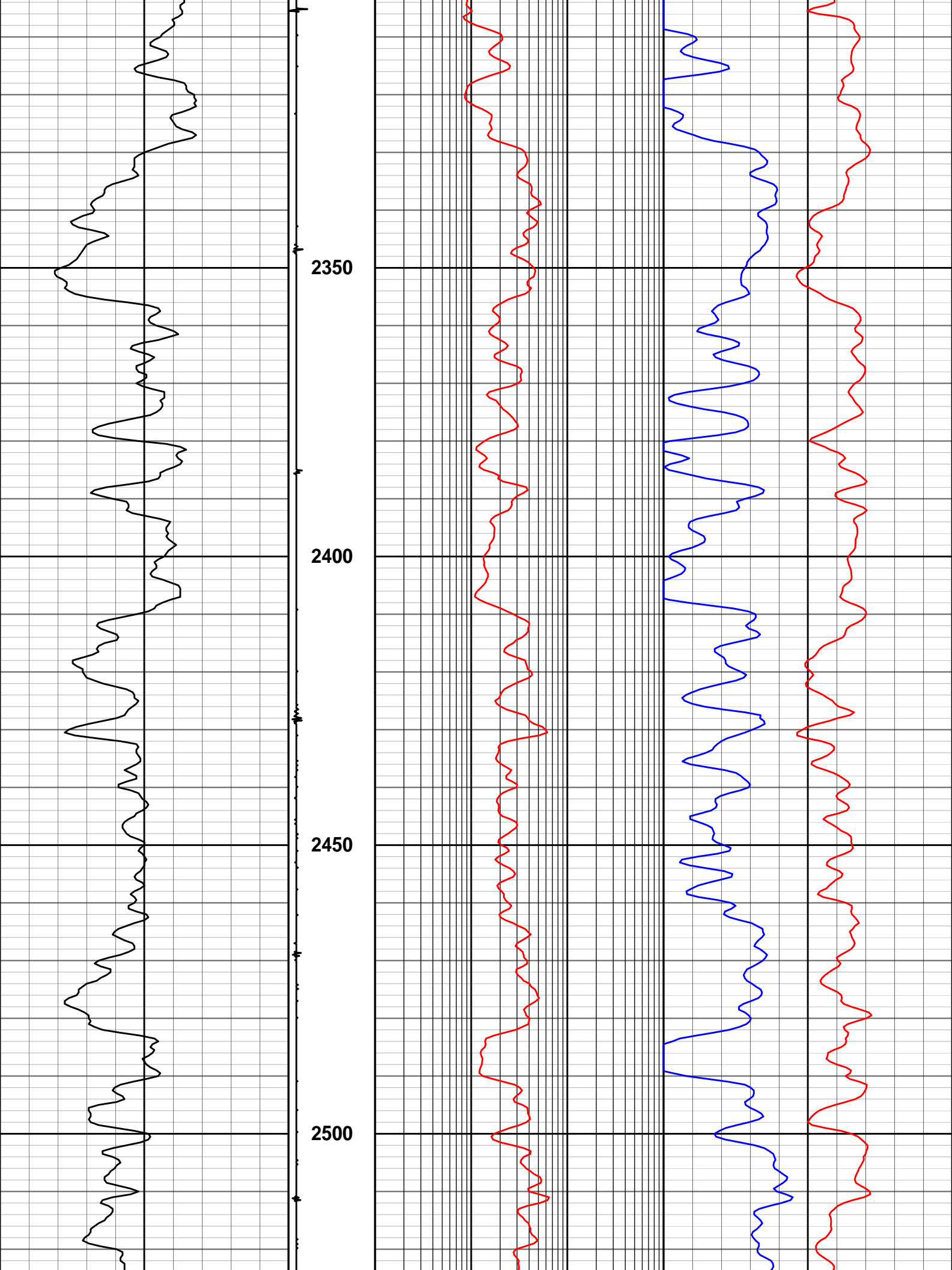


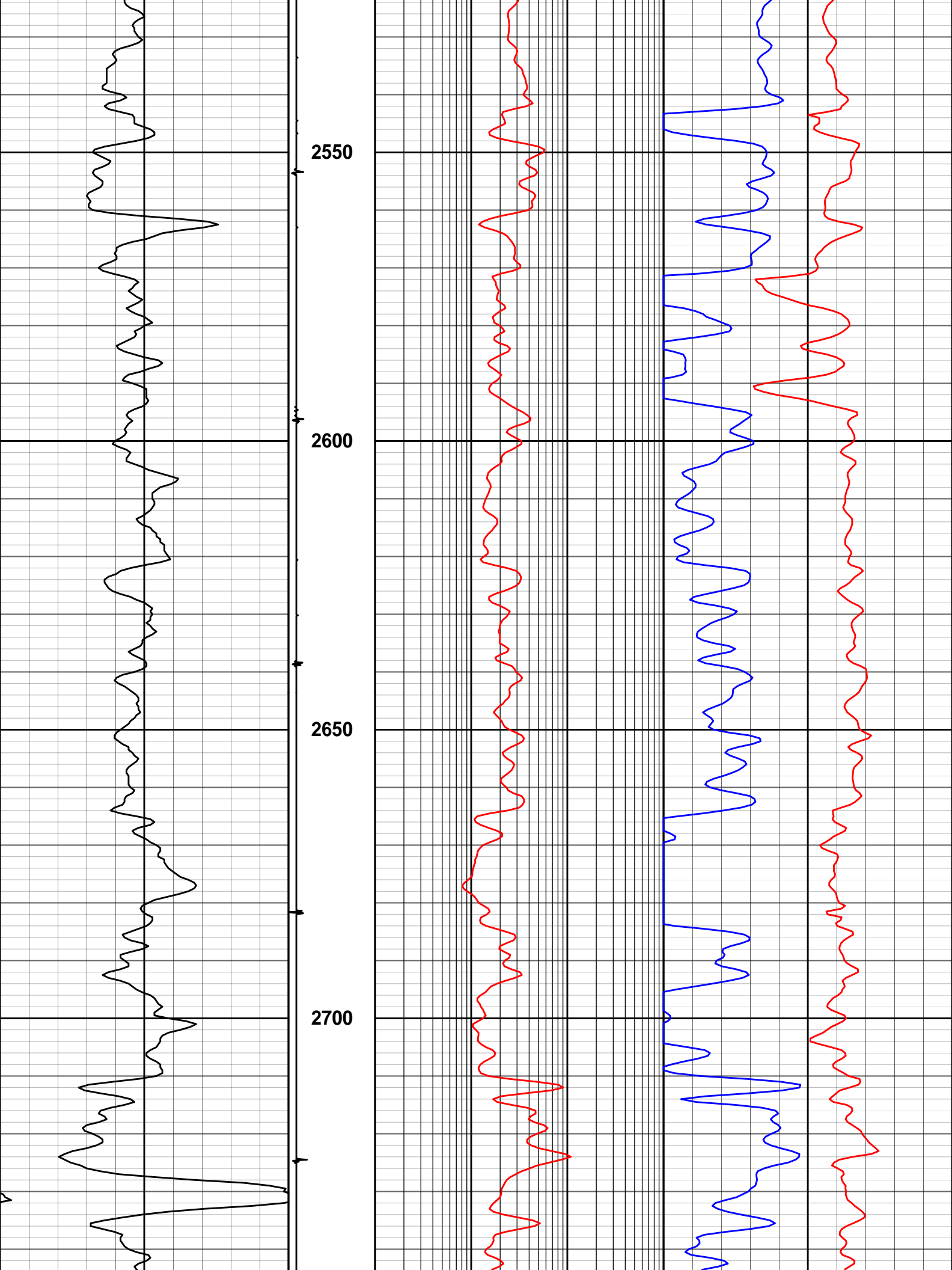


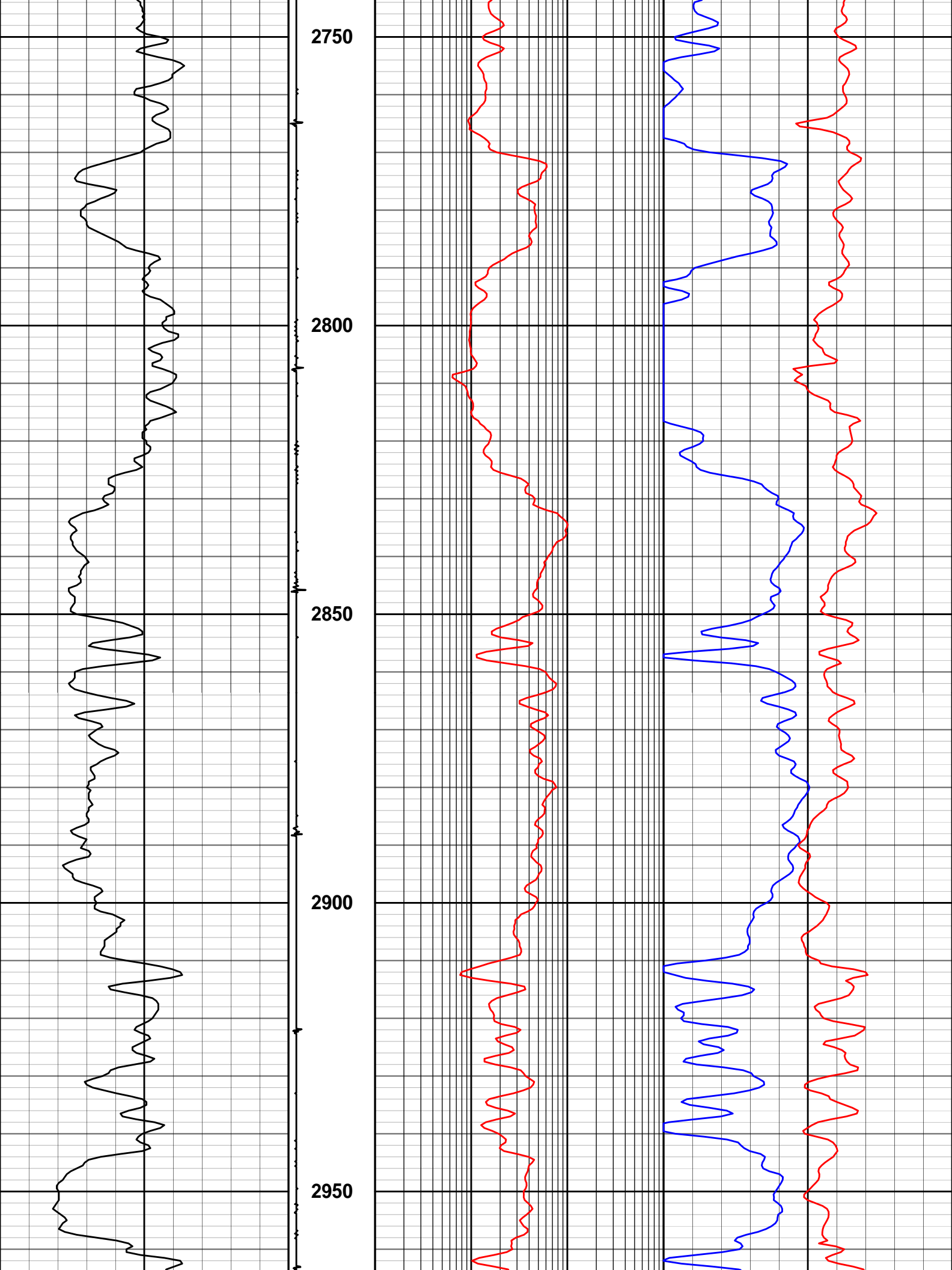


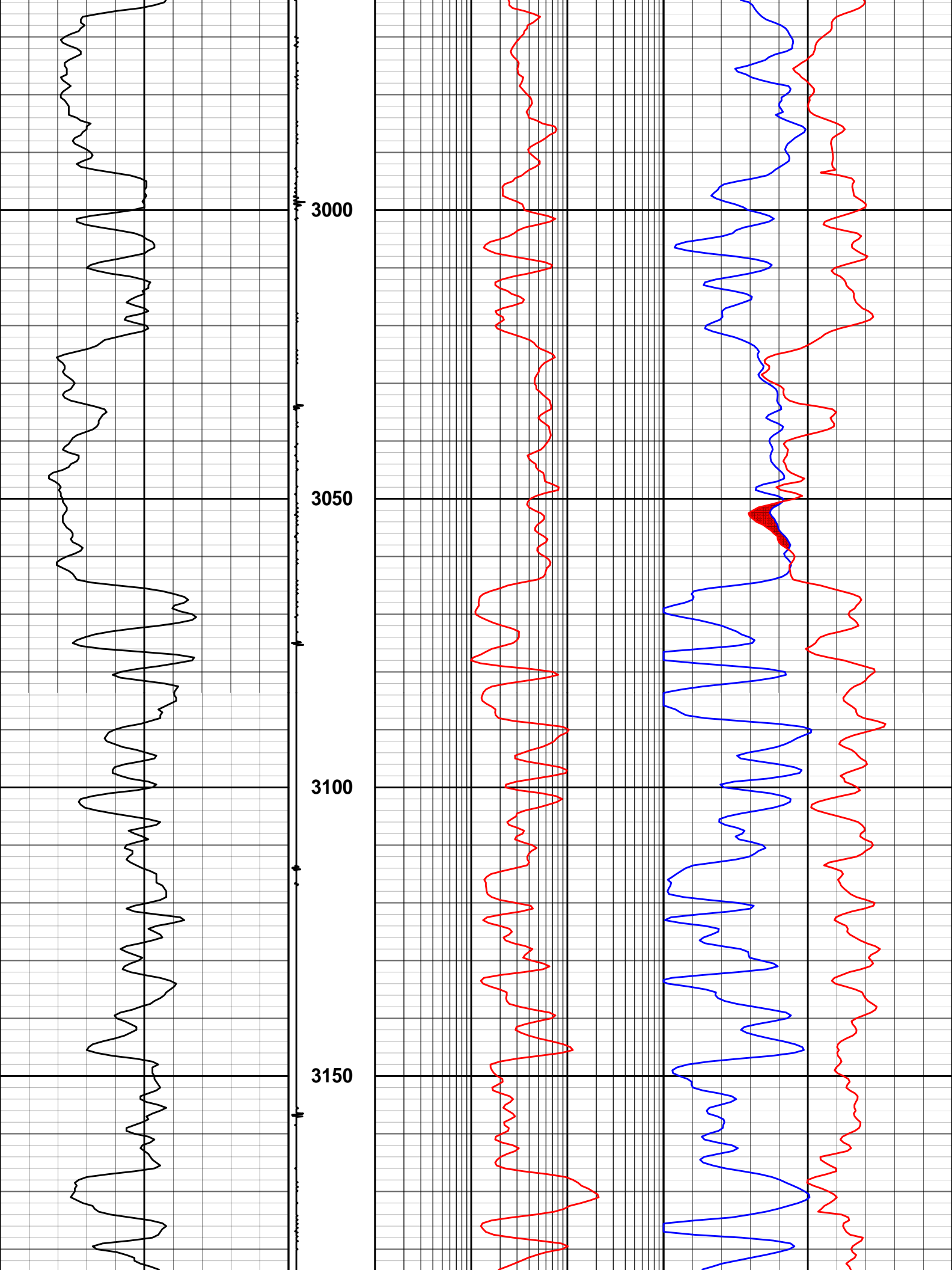


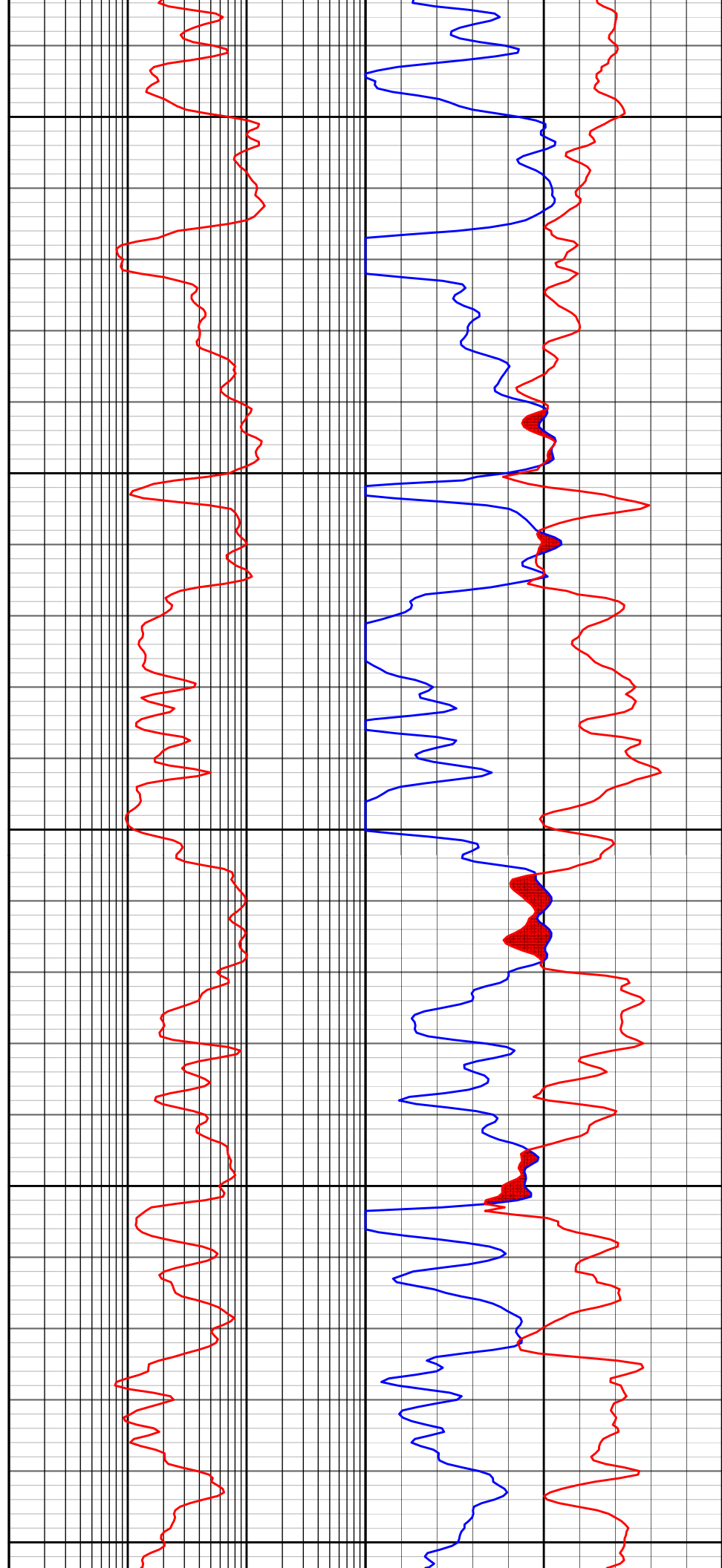
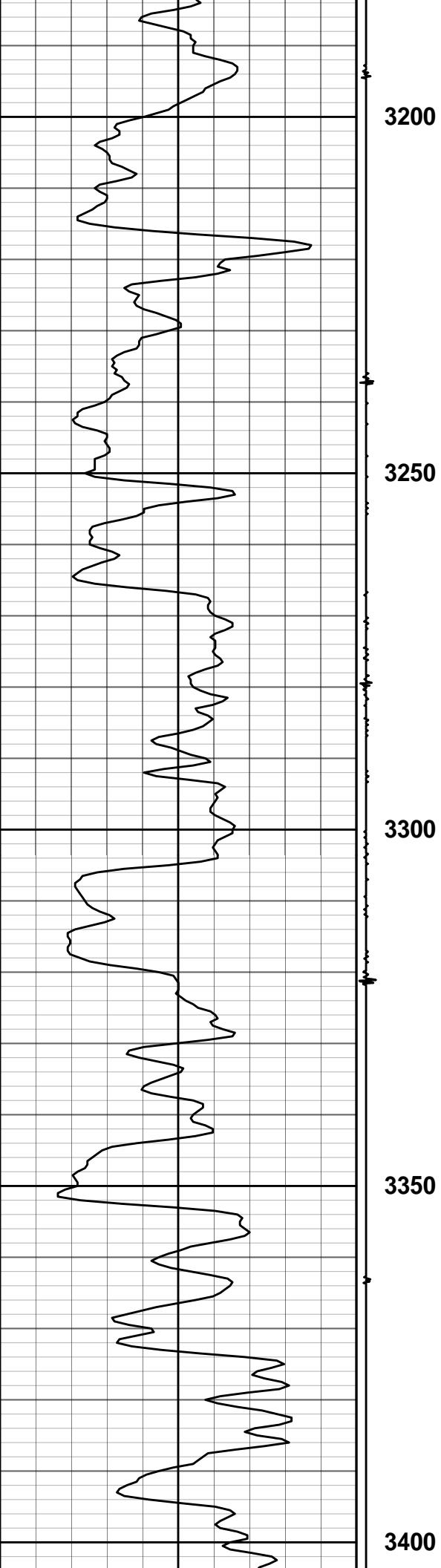


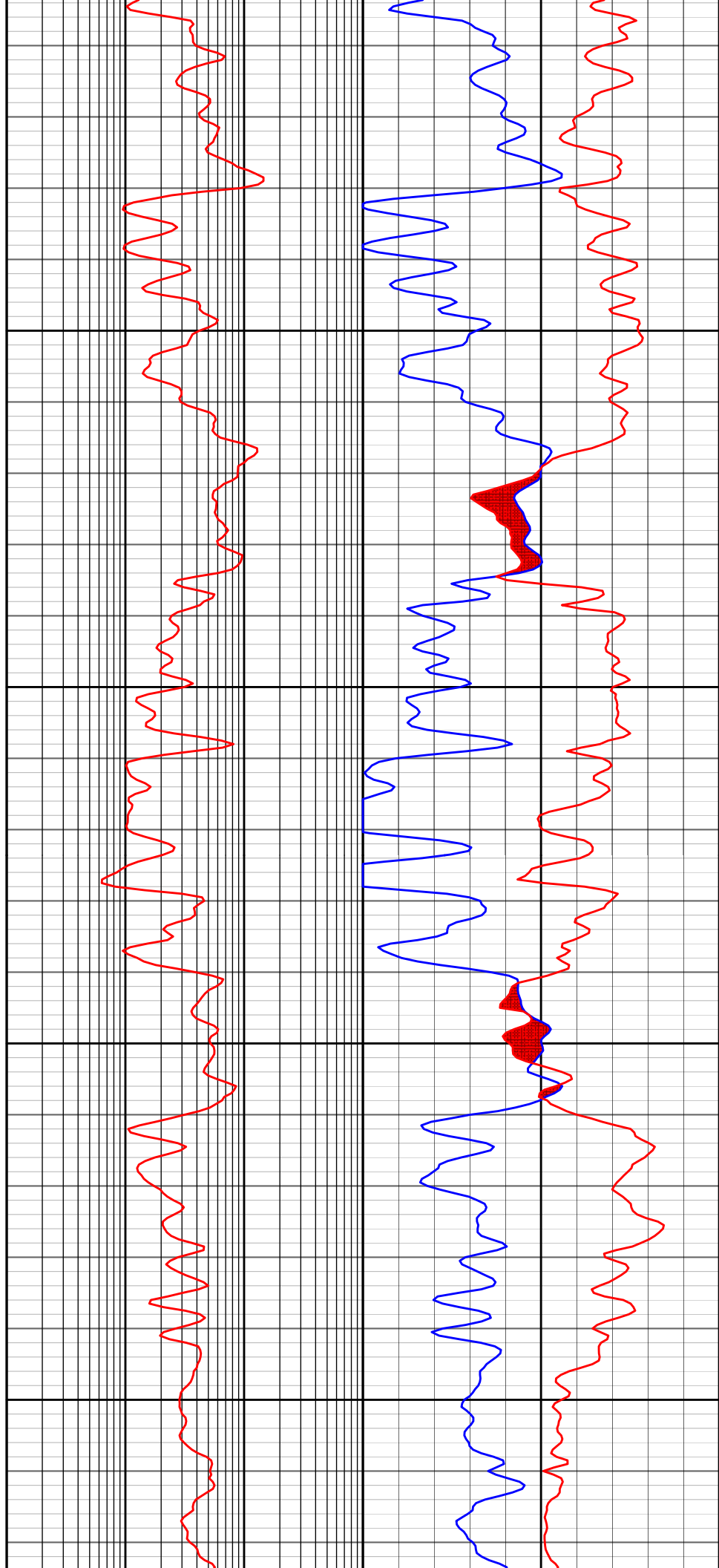
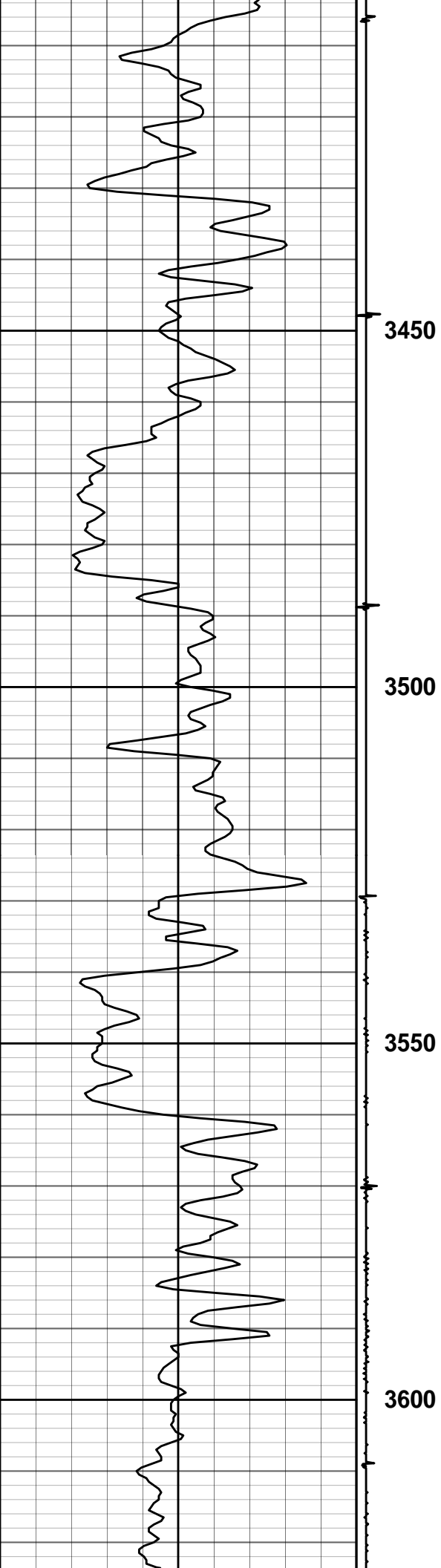


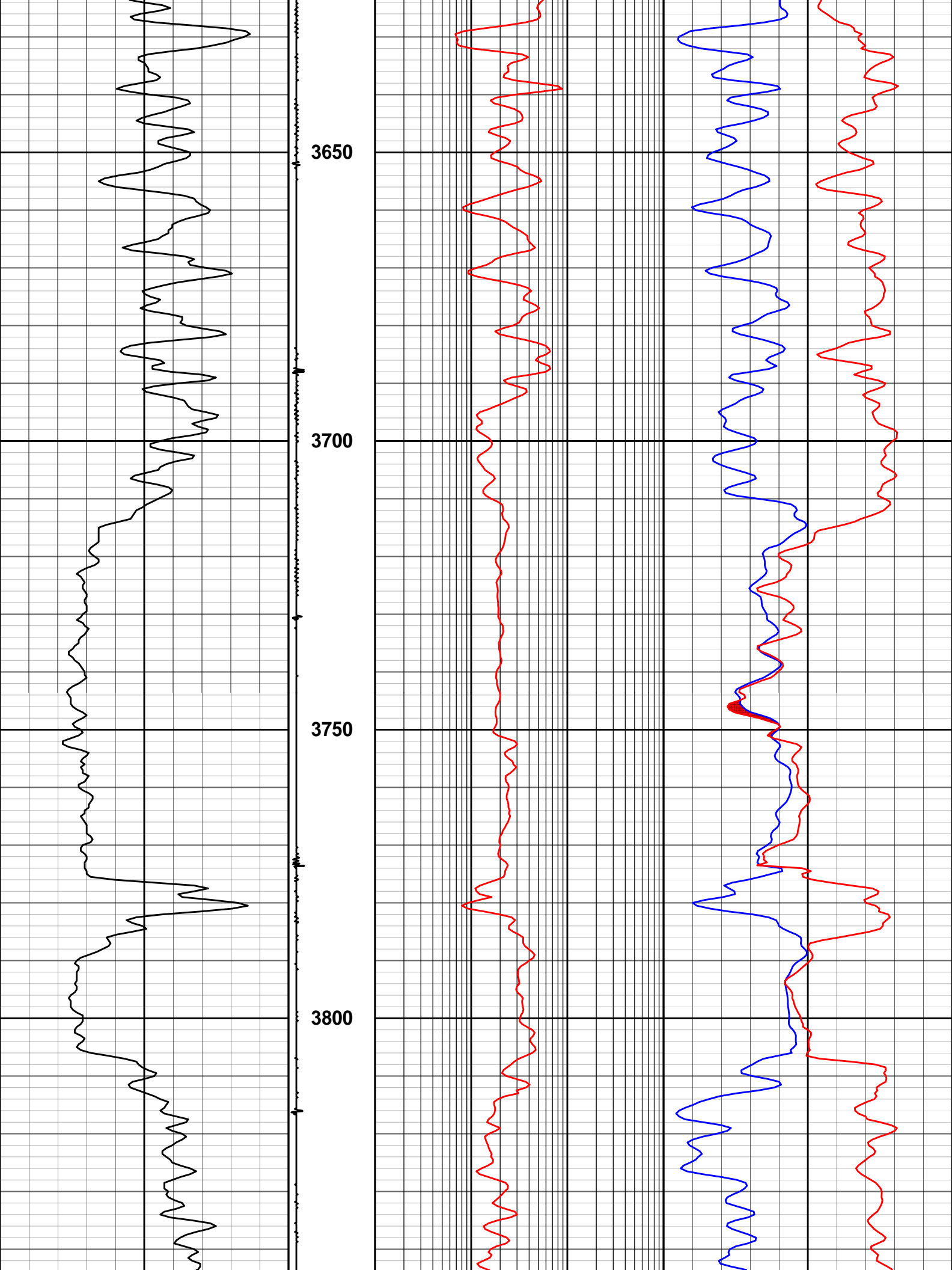


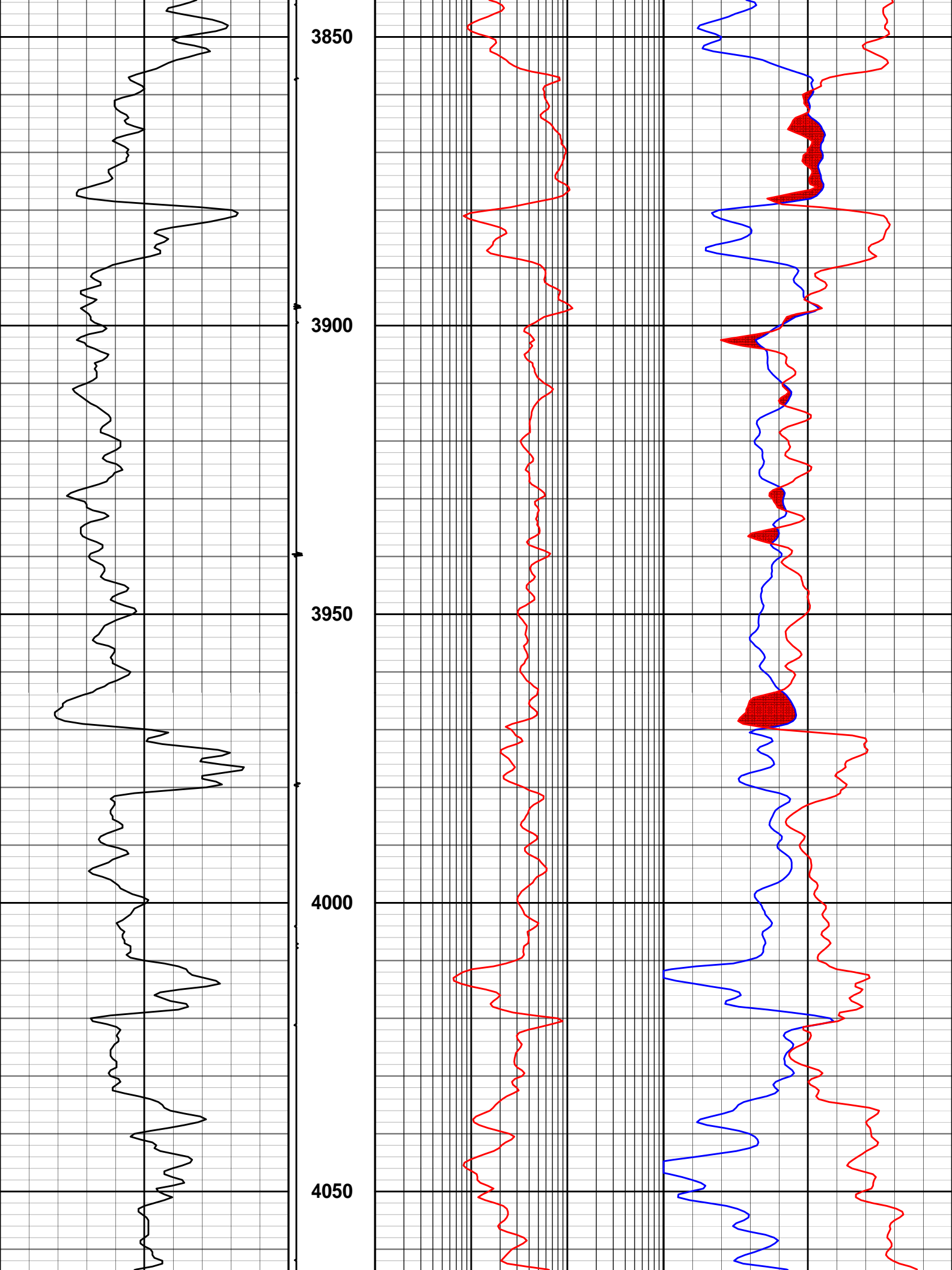


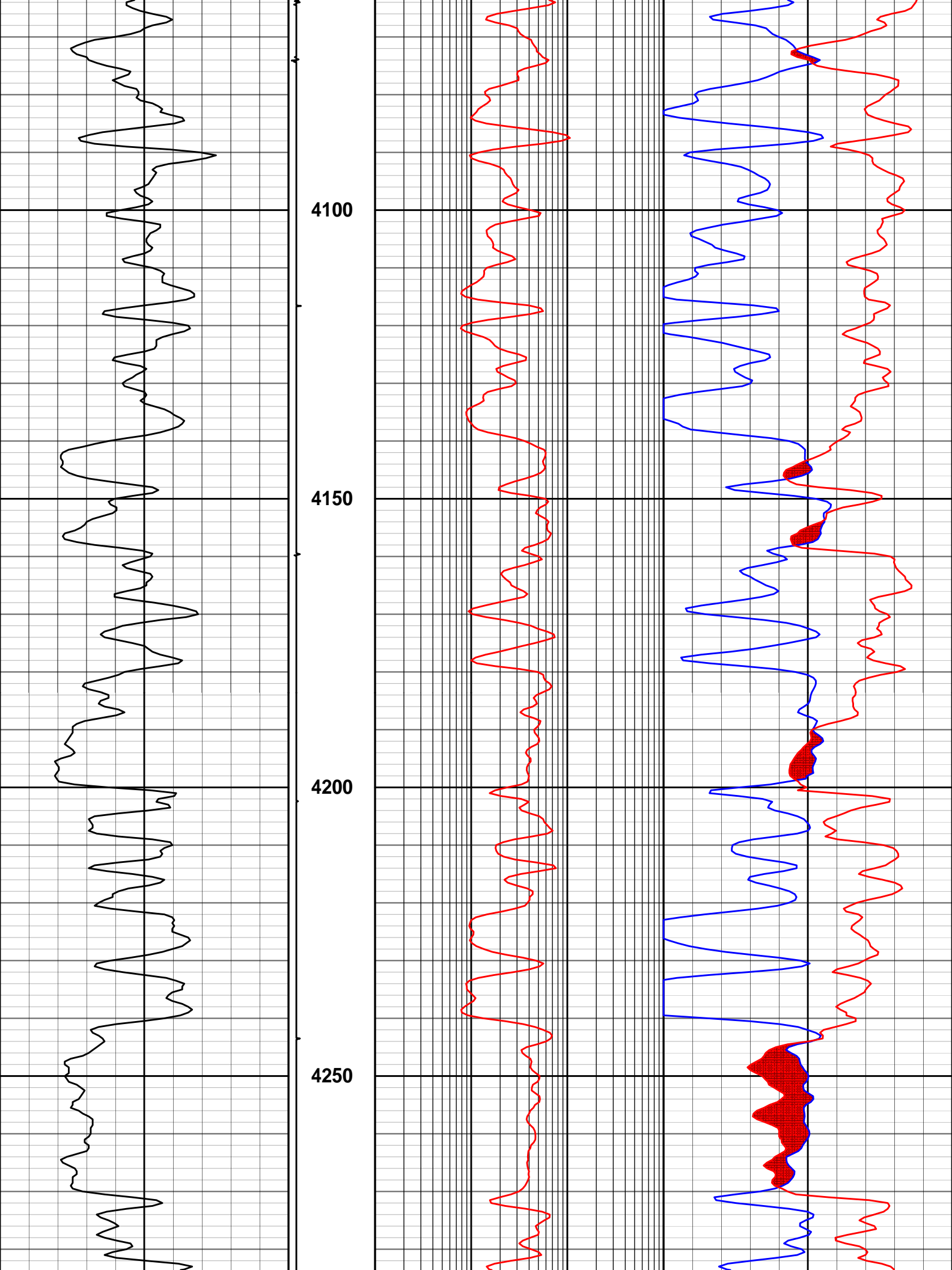


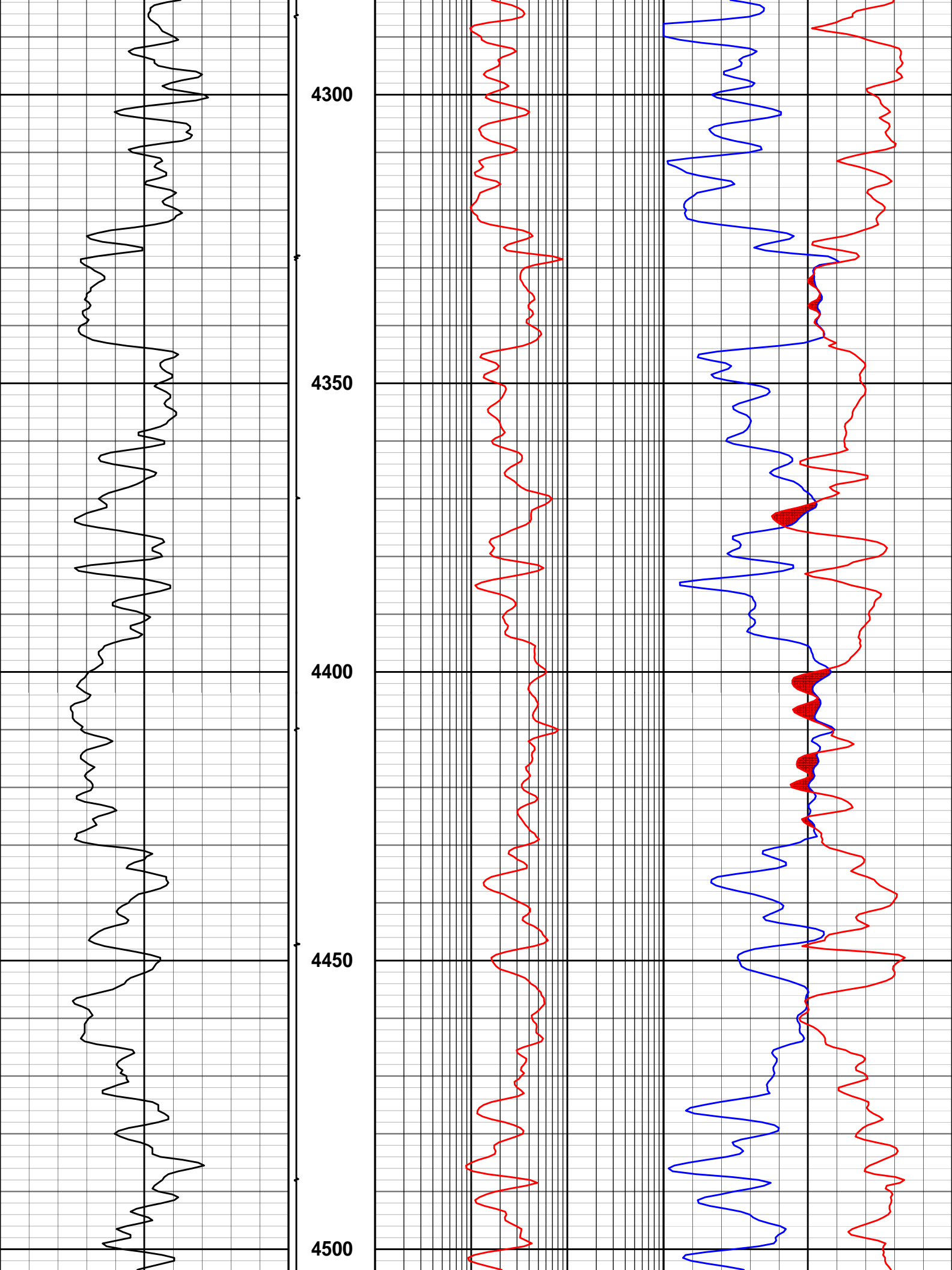


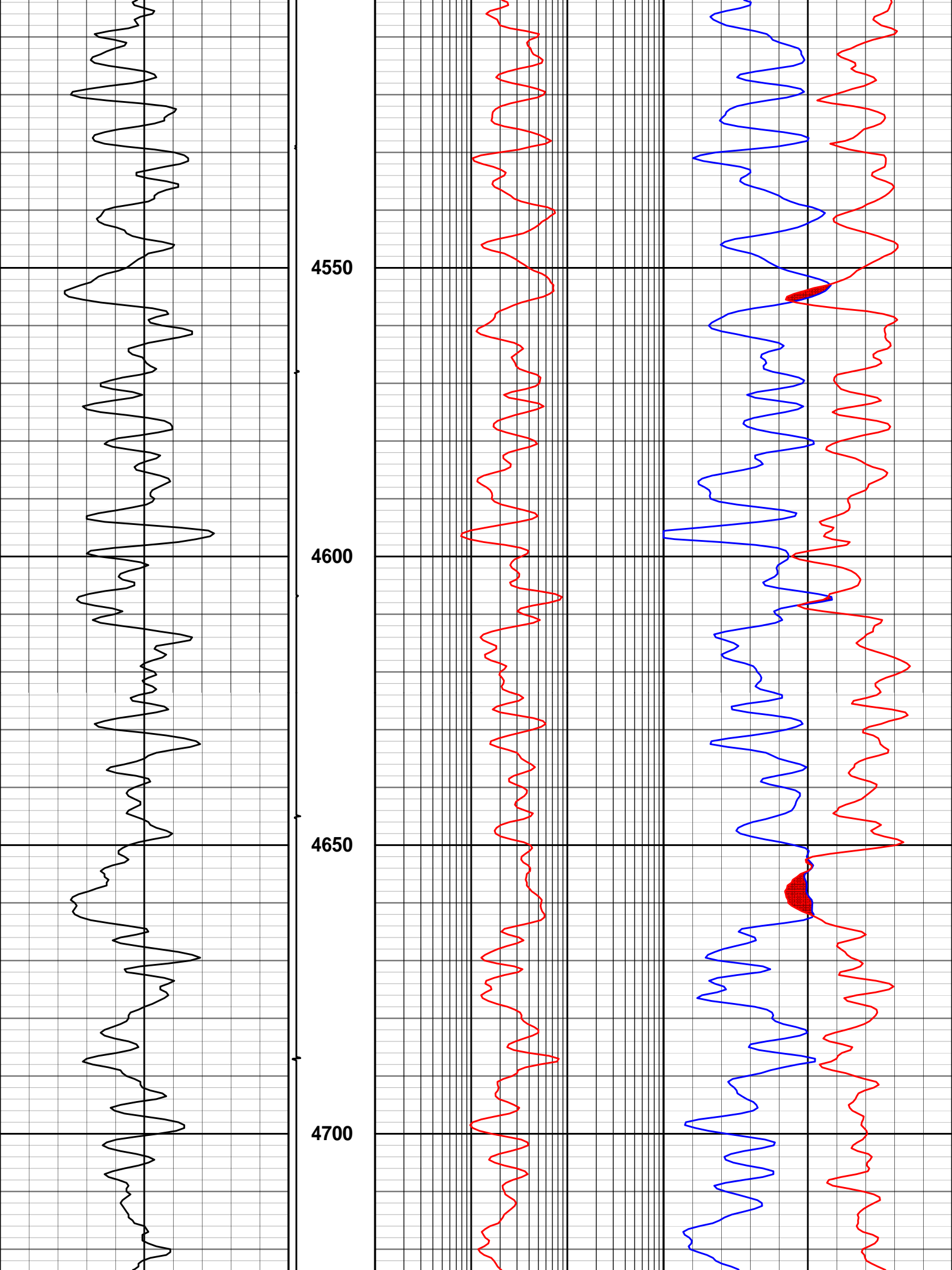


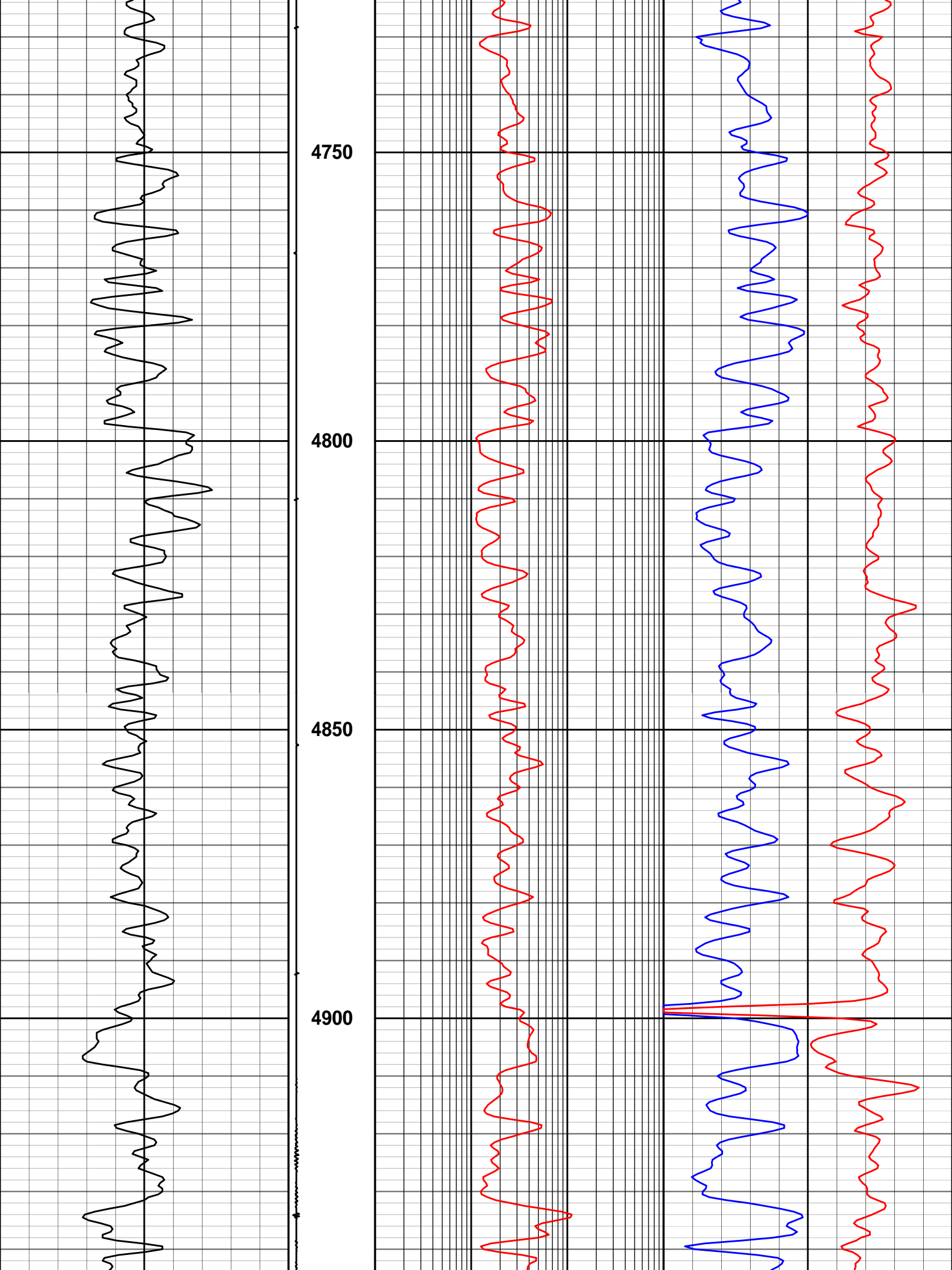


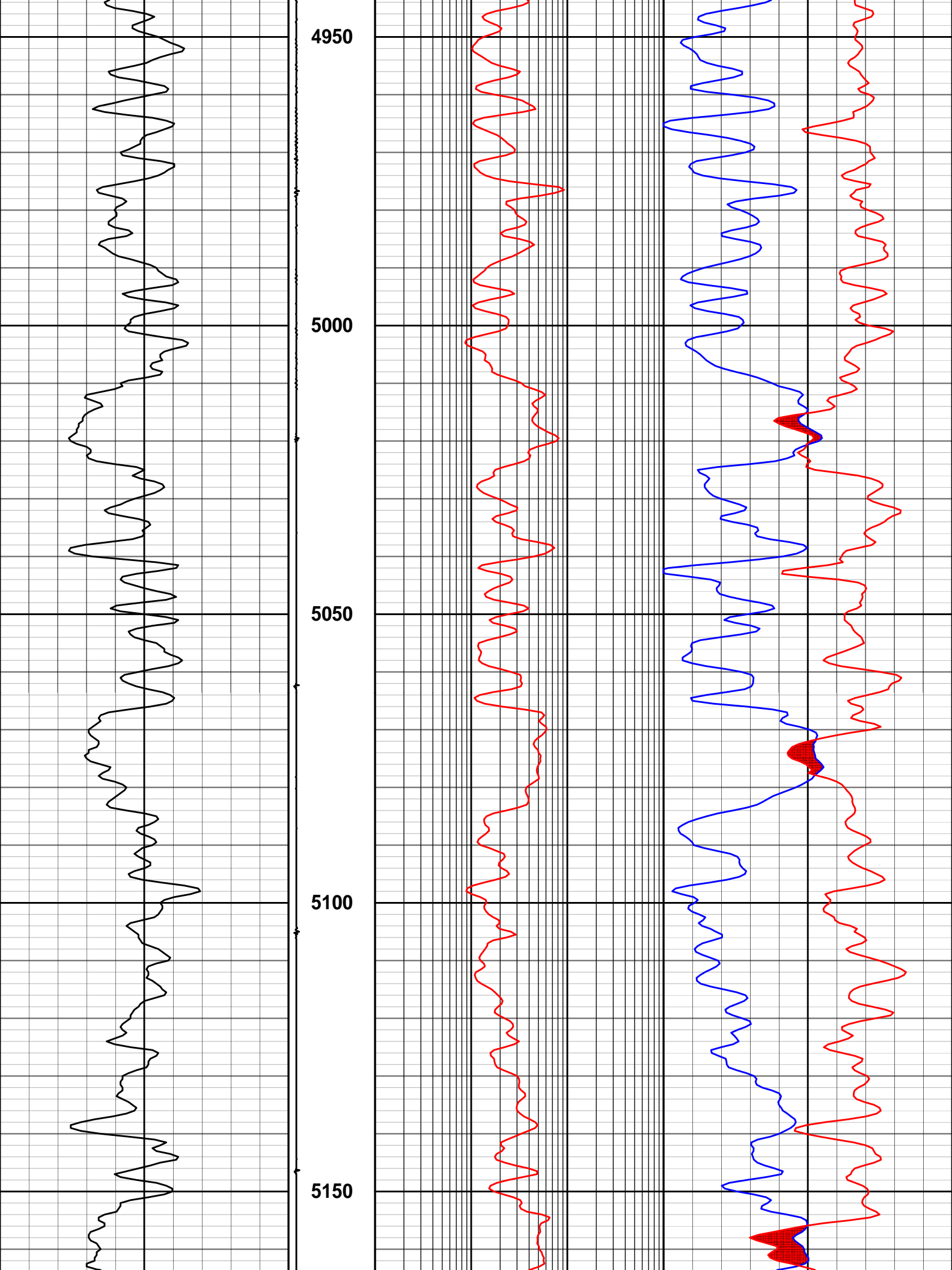


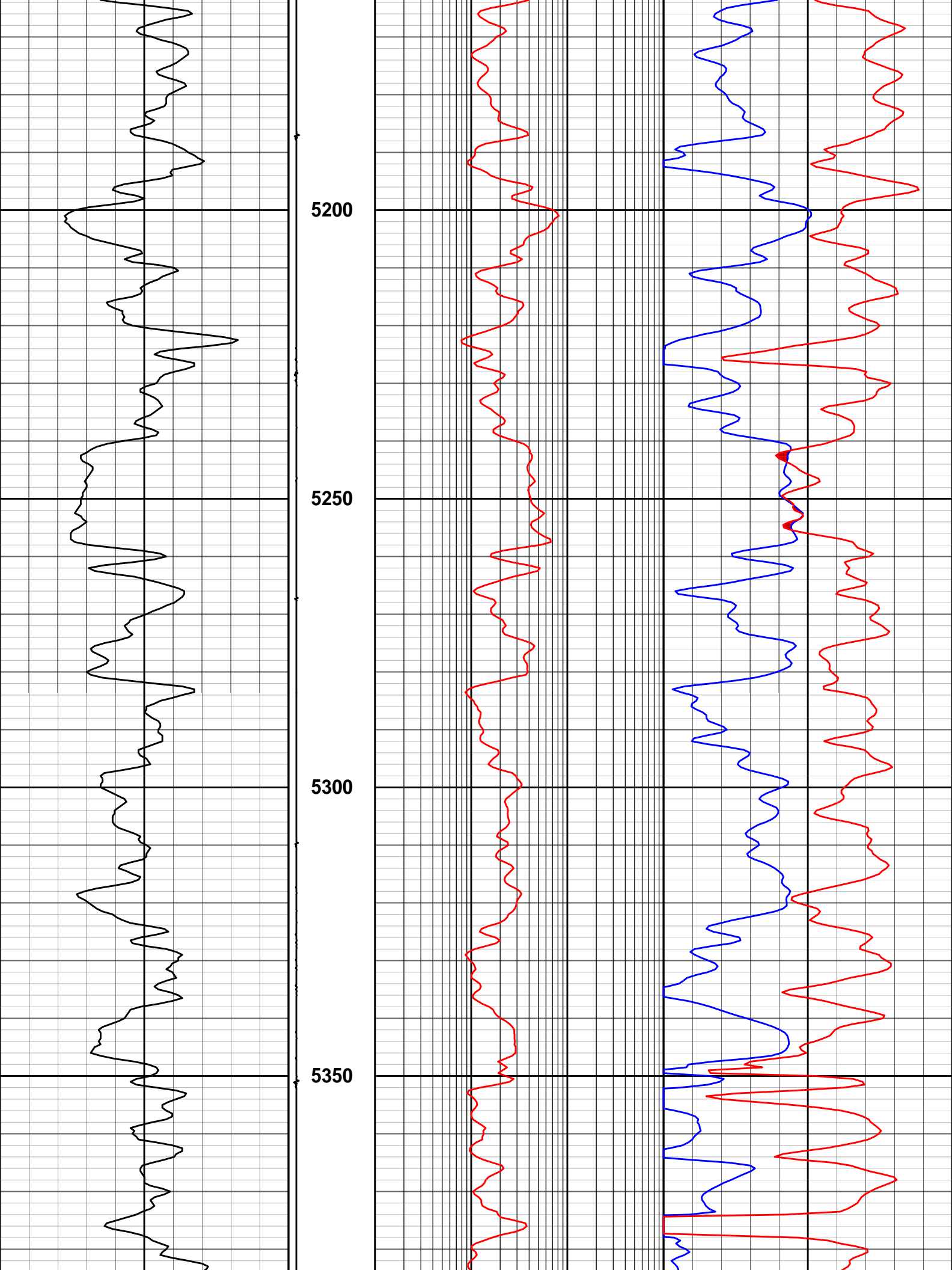


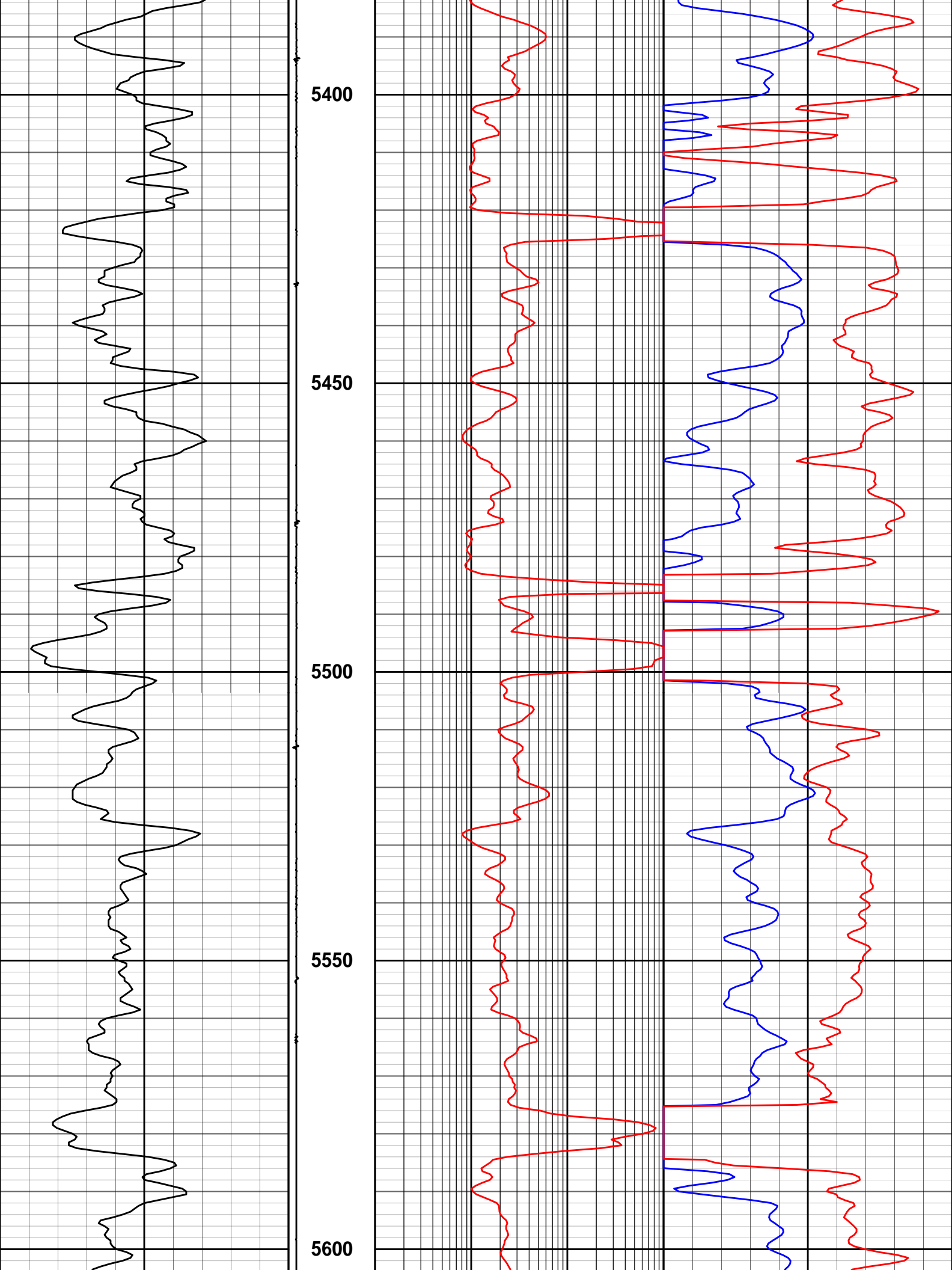


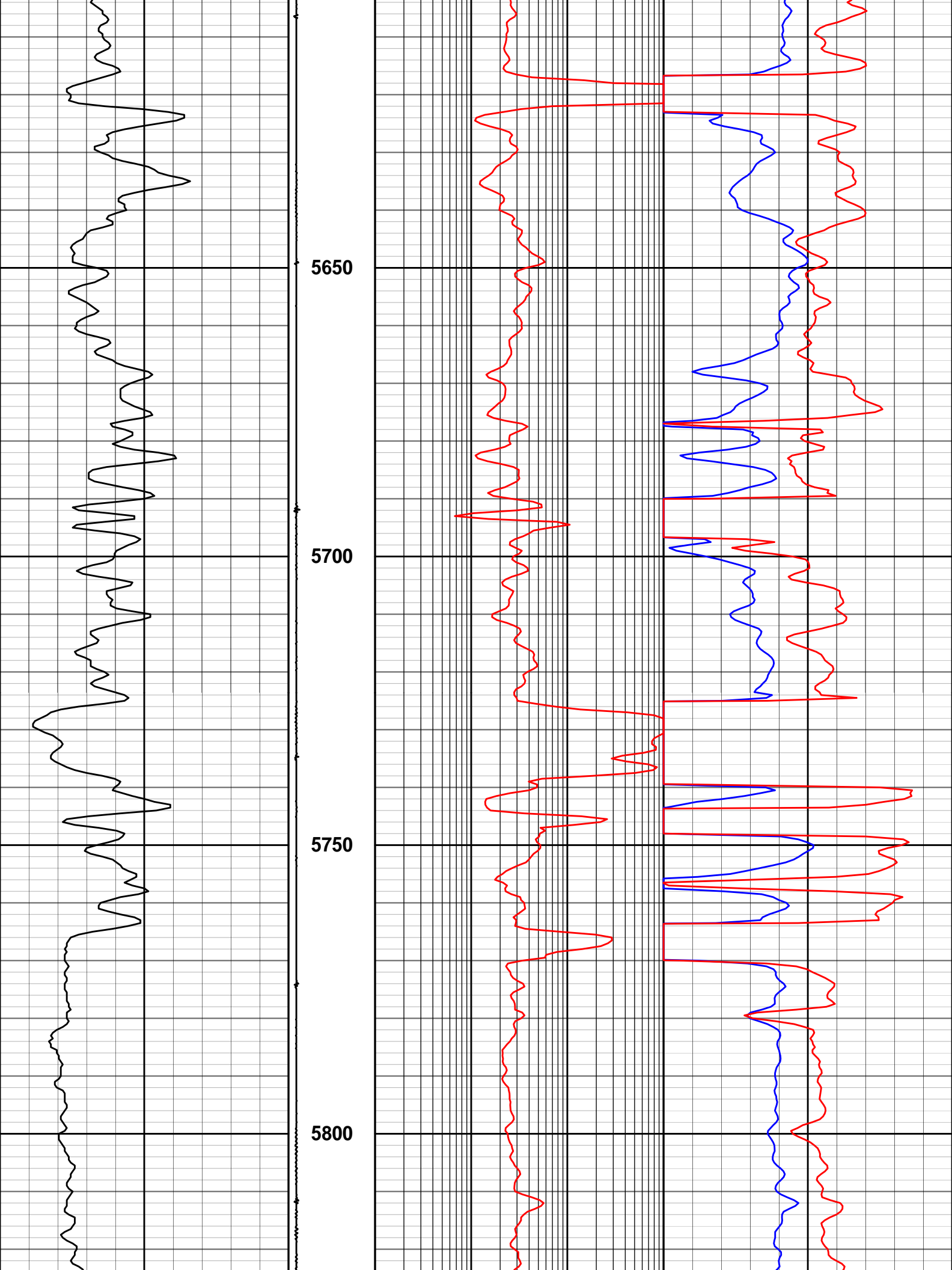


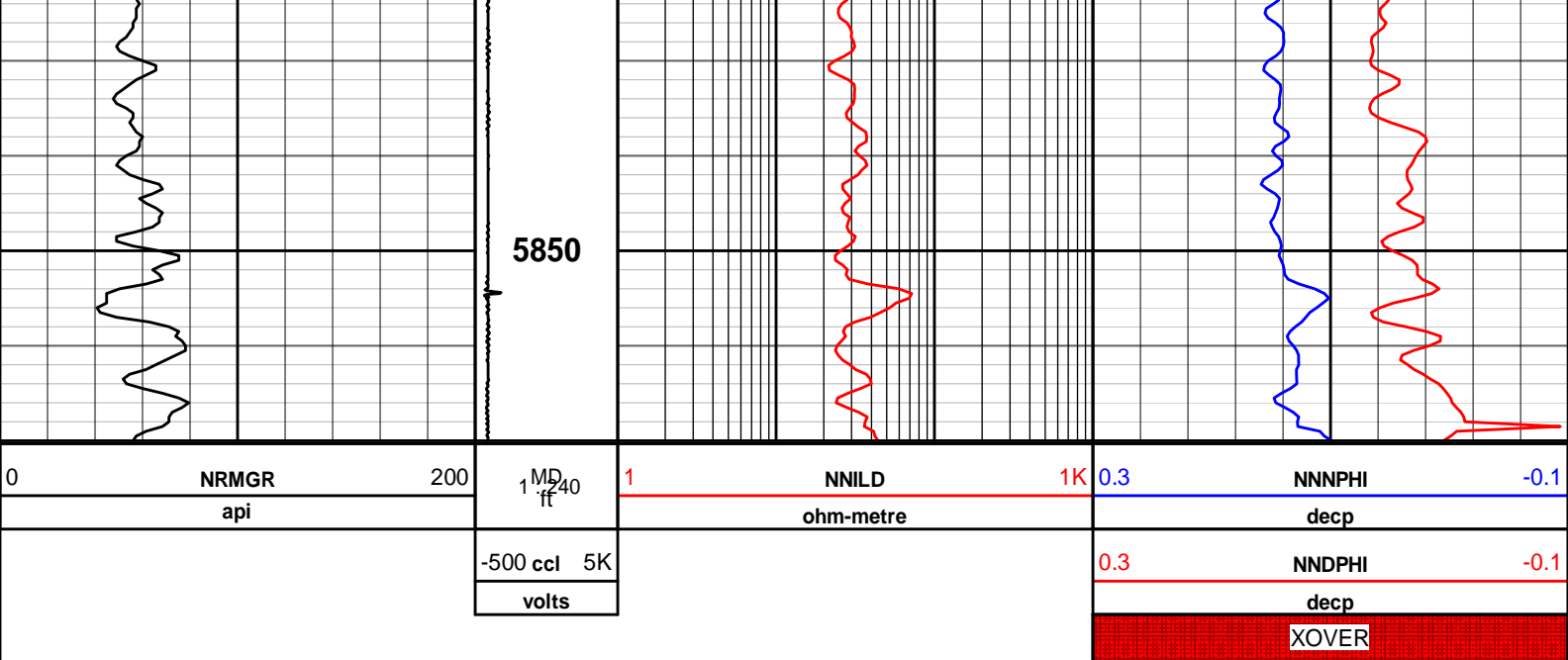












COMPANY	Caerus Piceance, LLC.		
WELL	Island Ranch 24B-13		
FIELD	Parachute		
COUNTY	Garfield	STATE	CO
HALLIBURTON			