

Sonic Bond Log
Gamma-Ray
CCL

Company	KERR-McGEE OIL & GAS ONSHORE LP		
Well	CARMA 7-25		
Field	WATTENBERG		
County	WELD	State	COLORADO
Location:	API # : 15-123-25066		Other Services
SHL: 1706' FNL 1620' FEL SW/NE LAT: 40.19980 LONG:-104.94760 SEC 25 TWP 3N RGE 68W			
Permanent Datum	GL	Elevation	4900'
Log Measured From	KB 12'		
Drilling Measured From	KB	Elevation K.B. 4912' D.F. 4911' G.L. 4900'	

Date	10-27-2014
Run Number	ONE
Depth Driller	7600'
Depth Logger	1936'
Bottom Logged Interval	1933'
Top Log Interval	Surface
Open Hole Size	7 7/8"
Type Fluid	WATER
Density / Viscosity	1.0
Max. Recorded Temp.	82
Estimated Cement Top	452'
Time Well Ready	N/A
Time Logger on Bottom	N/A
Equipment Number	3812
Location	GREELEY
Recorded By	A.STEERMAN
Witnessed By	S.Olivas

Borehole Record			Tubing Record				
Run Number	Bit	From	To	Size	Weight	From	To
ONE							
TWO							

Casing Record	Size	Wgt/Ft	Top	Bottom
Surface String	8 5/8"	24#	0	857'
Prot. String				
Production String	4 1/2"	11.6#	0	7414'
Liner				

<<< Fold Here >>>

All interpretations are opinions based on inferences from electrical or other measurements and we cannot and do not guarantee the accuracy or correctness of any interpretation, and we shall not, except in the case of gross or willful negligence on our part, be liable or responsible for any loss, costs, damages, or expenses incurred or sustained by anyone resulting from any interpretation made by any of our officers, agents or employees. These interpretations are also subject to our general terms and conditions set out in our current Price Schedule.

Comments

NOT CORRELATED
LOGGED TO VERIFY CEMENT

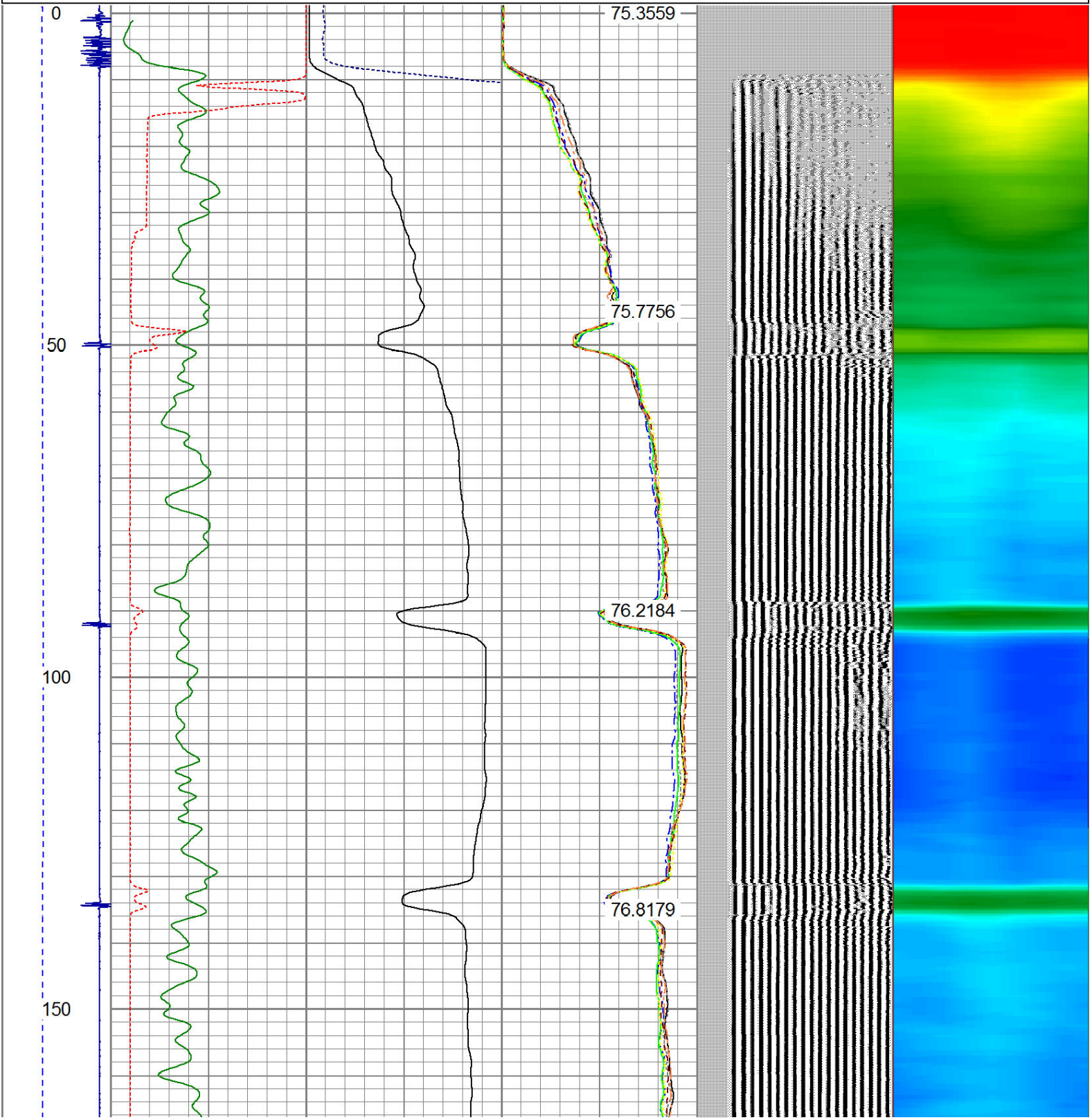
THANK YOU FOR USING WARRIOR.

Sensor	Offset (ft)	Schematic	Description	Len (ft)	OD (in)	Wt (lb)
CENT	19.08					

			PTS275	2.83	2.75	
HEADVOLT	16.25					
RBT	16.25					
IntTemp	14.83					
WVF3FT	11.58		RBT-Probe (Base)	8.92	2.75	90.00
WVFCAL	11.58		Probe Radii Bond Tool with Digital Telemetry			
WVFS1	11.58					
WVFS2	11.58					
WVFS3	11.58					
WVFS4	11.58					
WVFS5	11.58					
WVFS6	11.58					
WVFS7	11.58					
WVFS8	11.58					
WVF5FT	10.58					
CNLSC	6.00		CNT-Probe_B (275)	3.00	2.75	40.00
CNSSC	5.17		6 bow centralizer			
GR	4.33					
CCL	3.64					
			GR-Probe (275)	4.33	2.75	30.00
			Probe 2.75"			
GR	0.90					
Dataset: carma 7-25.db: field/well/run1/pass2 Total Length: 19.08 ft Total Weight: 160.00 lb O.D. 2.75 in						

Dataset Creation: Mon Oct 27 07:46:29 2014 by Log 7.0 B1
Charted by: Depth in Feet scaled 1:240

-9	CCL	1	200	TT (usec)	800	0	AMP (mV)	100	0	AMPS1	100	200	VDL	1200	1	Cement Map	8
LSPD			0	GR (cps)	200	0	AMPx5 (mV)	20	0	AMPS2	100				1		100
(ft/min)			200	GR (cps)	400				0	AMPS4	100						
0		250							0	AMPS5	100						
									0	AMPS6	100						
									0	AMPS7	100						
									0	AMPS8	100						
										IntTemp							
										(degF)							



200

250

300

350

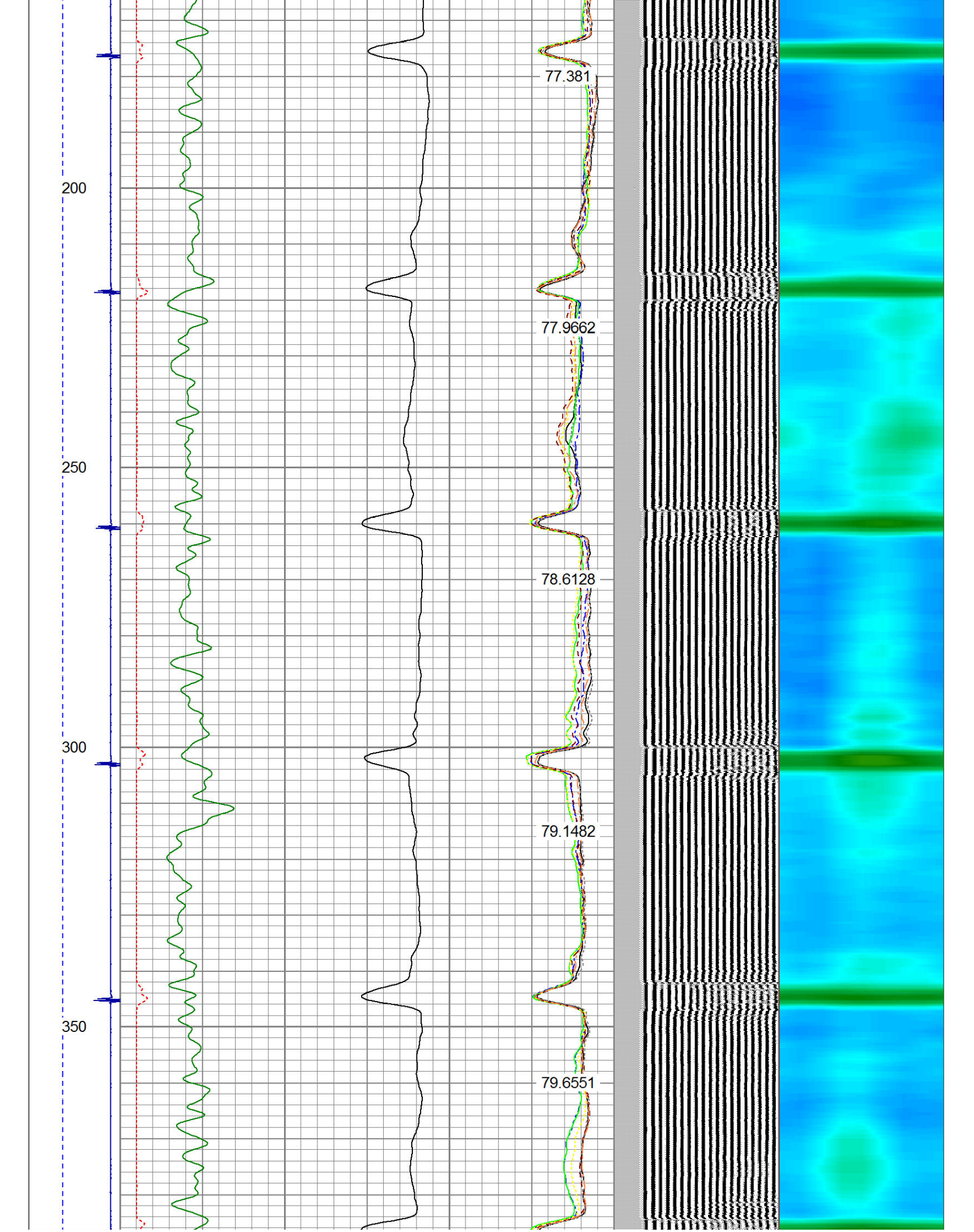
77.381

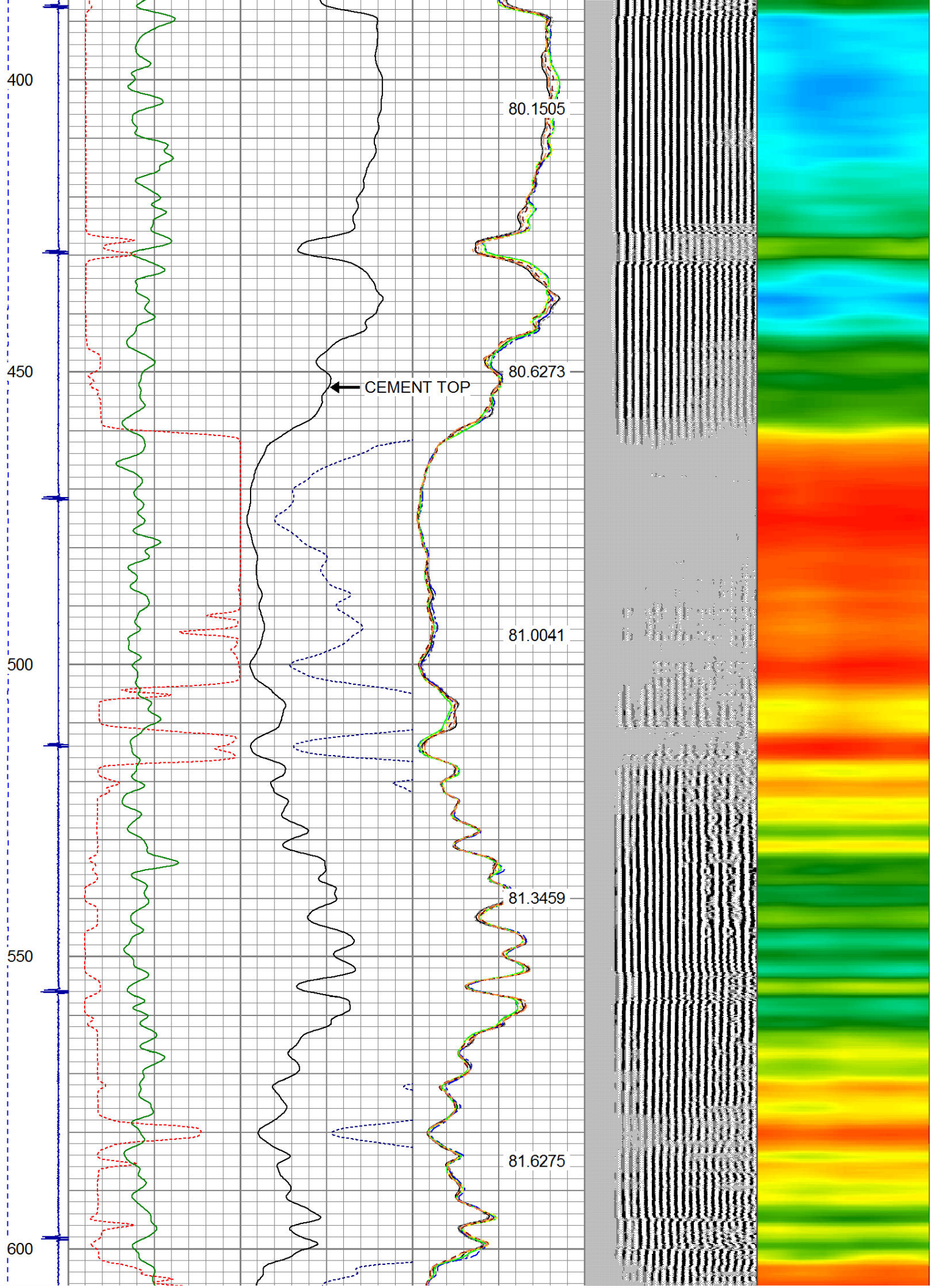
77.9662

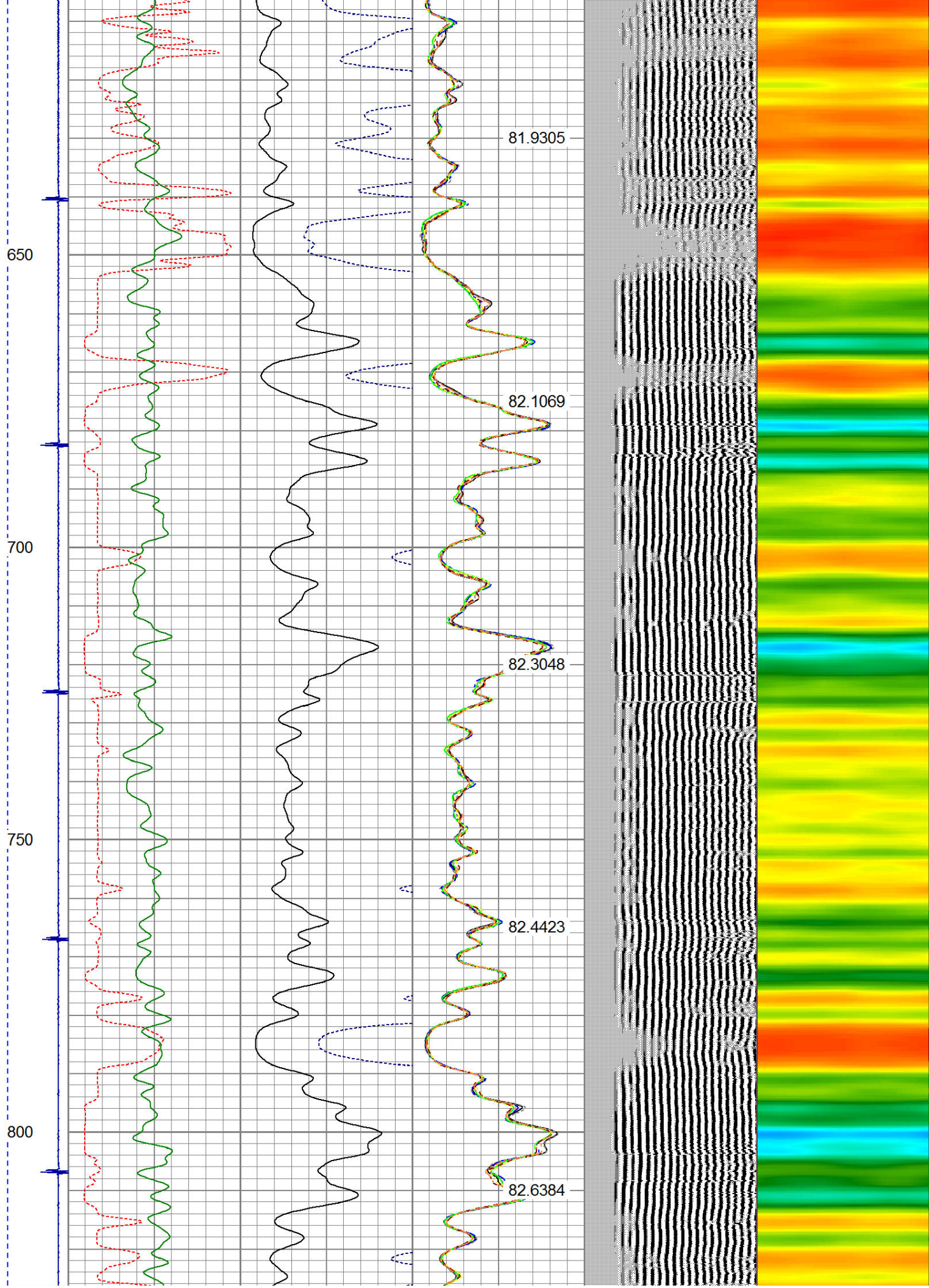
78.6128

79.1482

79.6551







850

900

950

1000

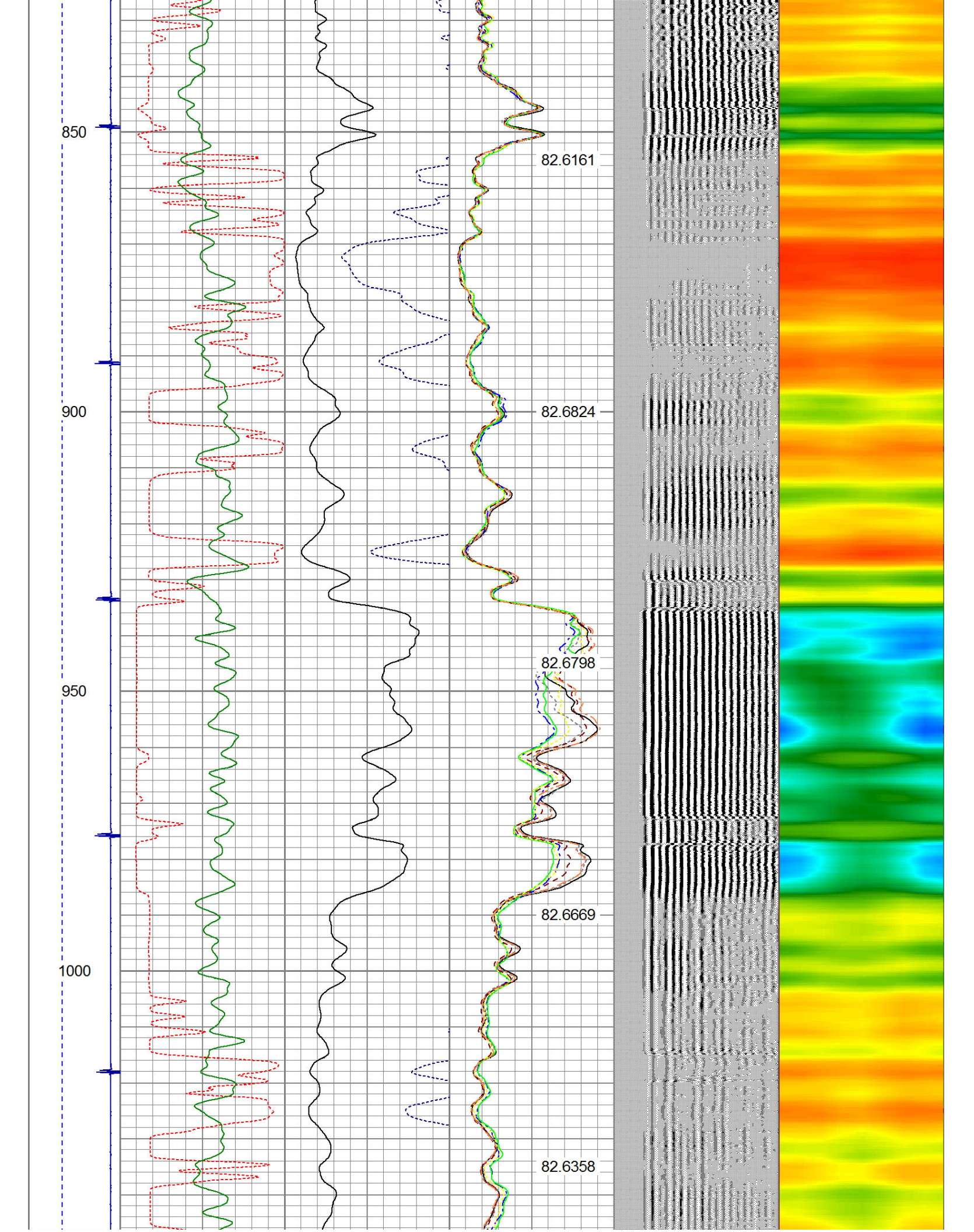
82.6161

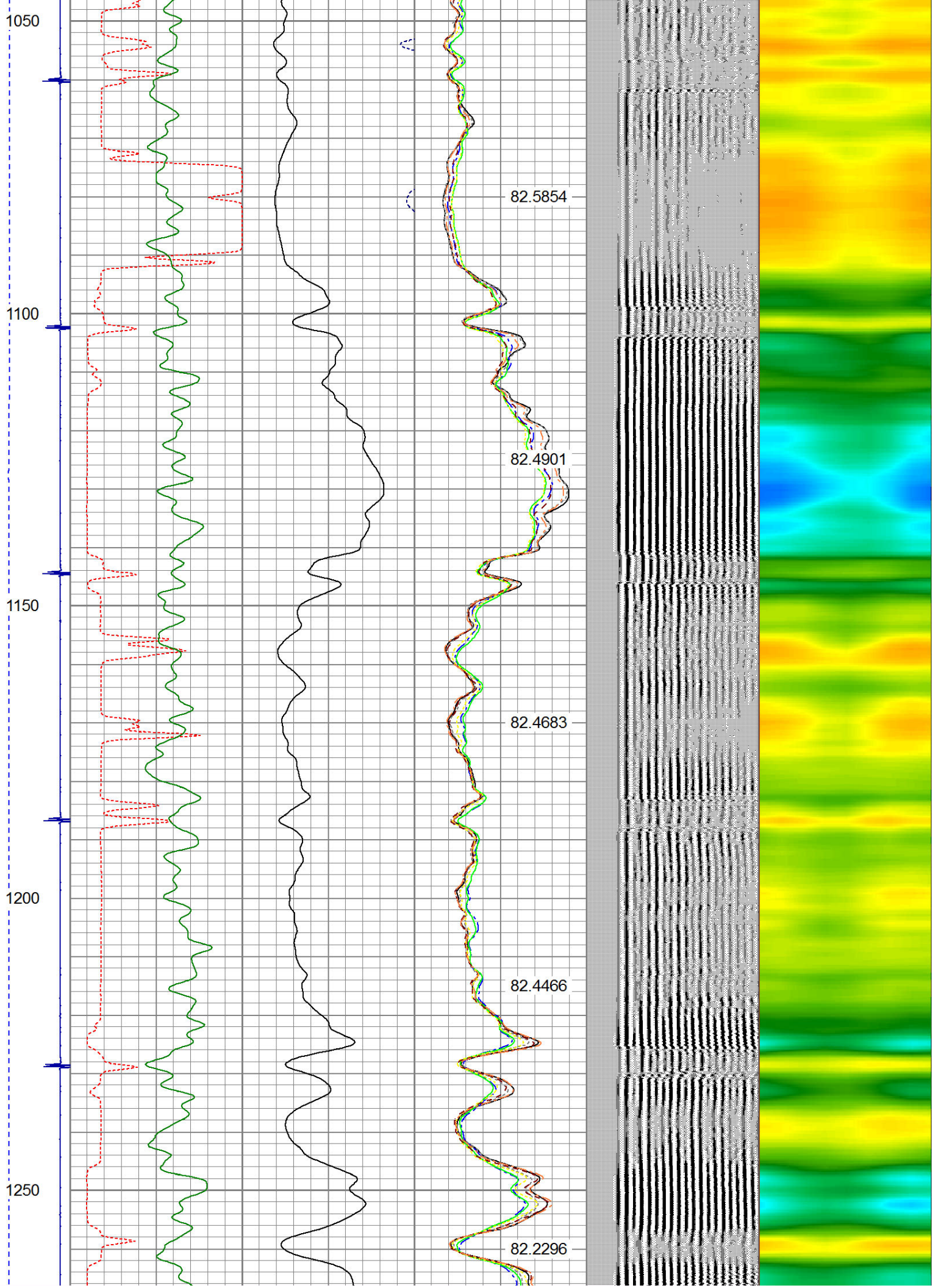
82.6824

82.6798

82.6669

82.6358





1300

1350

1400

1450

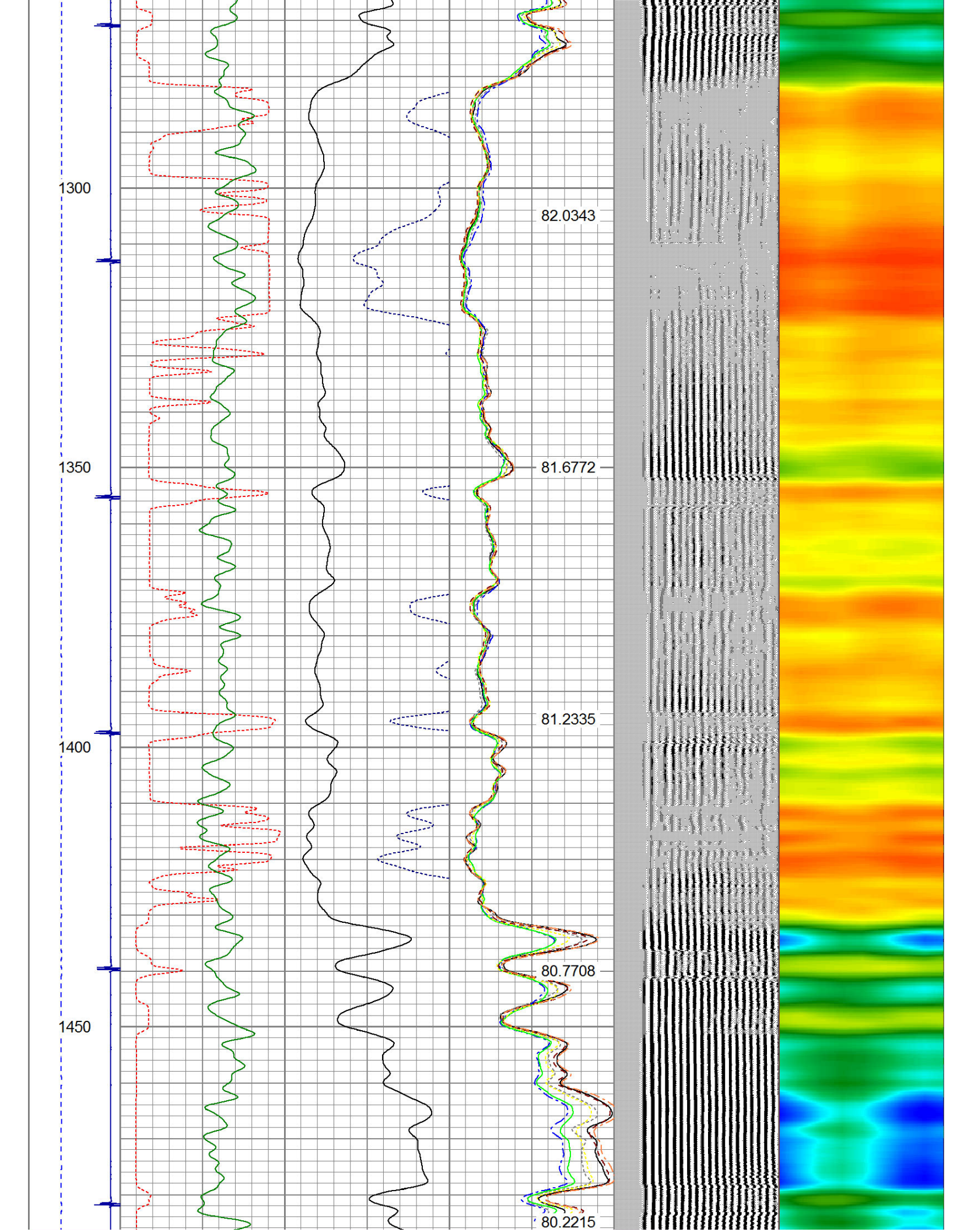
82.0343

81.6772

81.2335

80.7708

80.2215



1500

1550

1600

1650

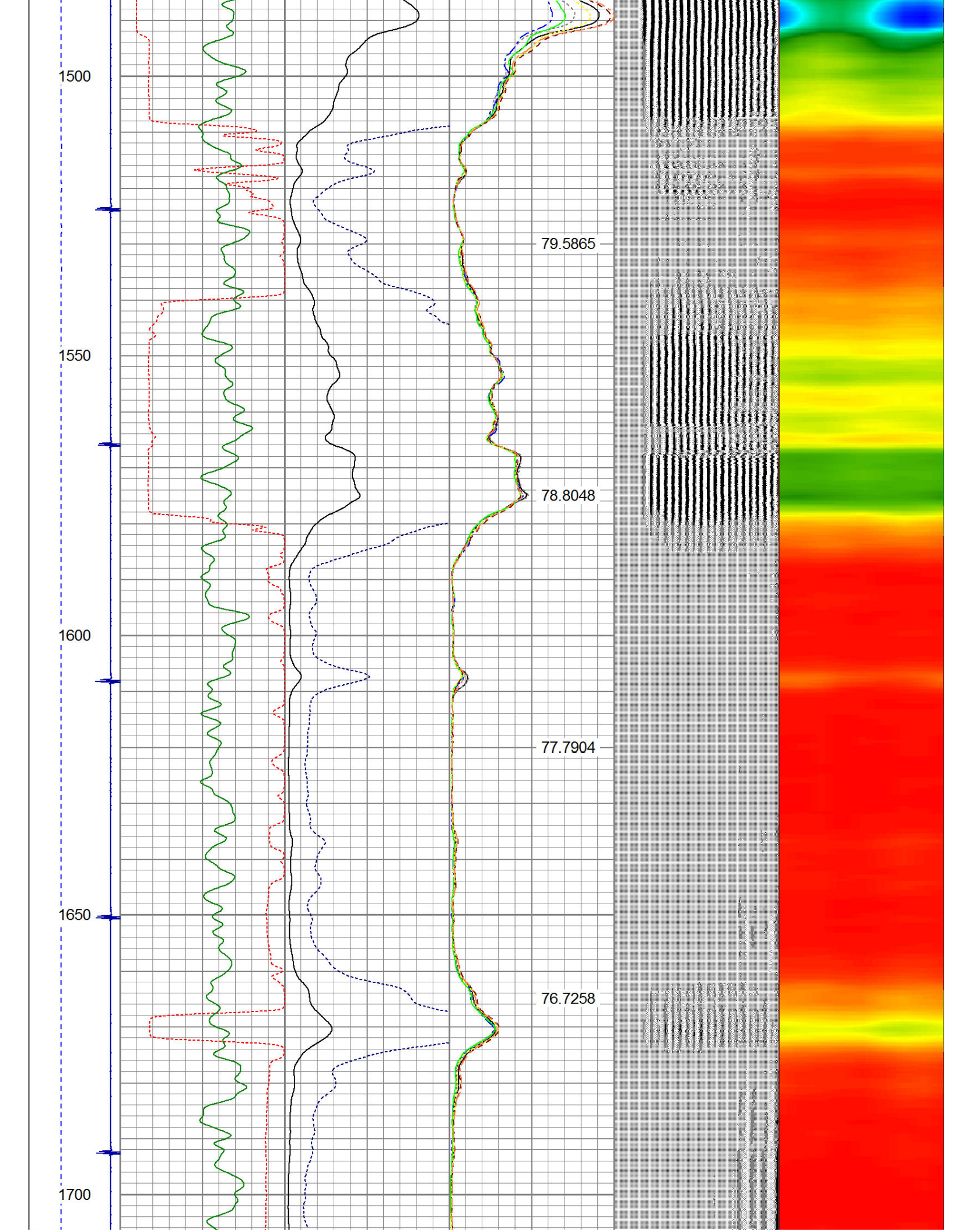
1700

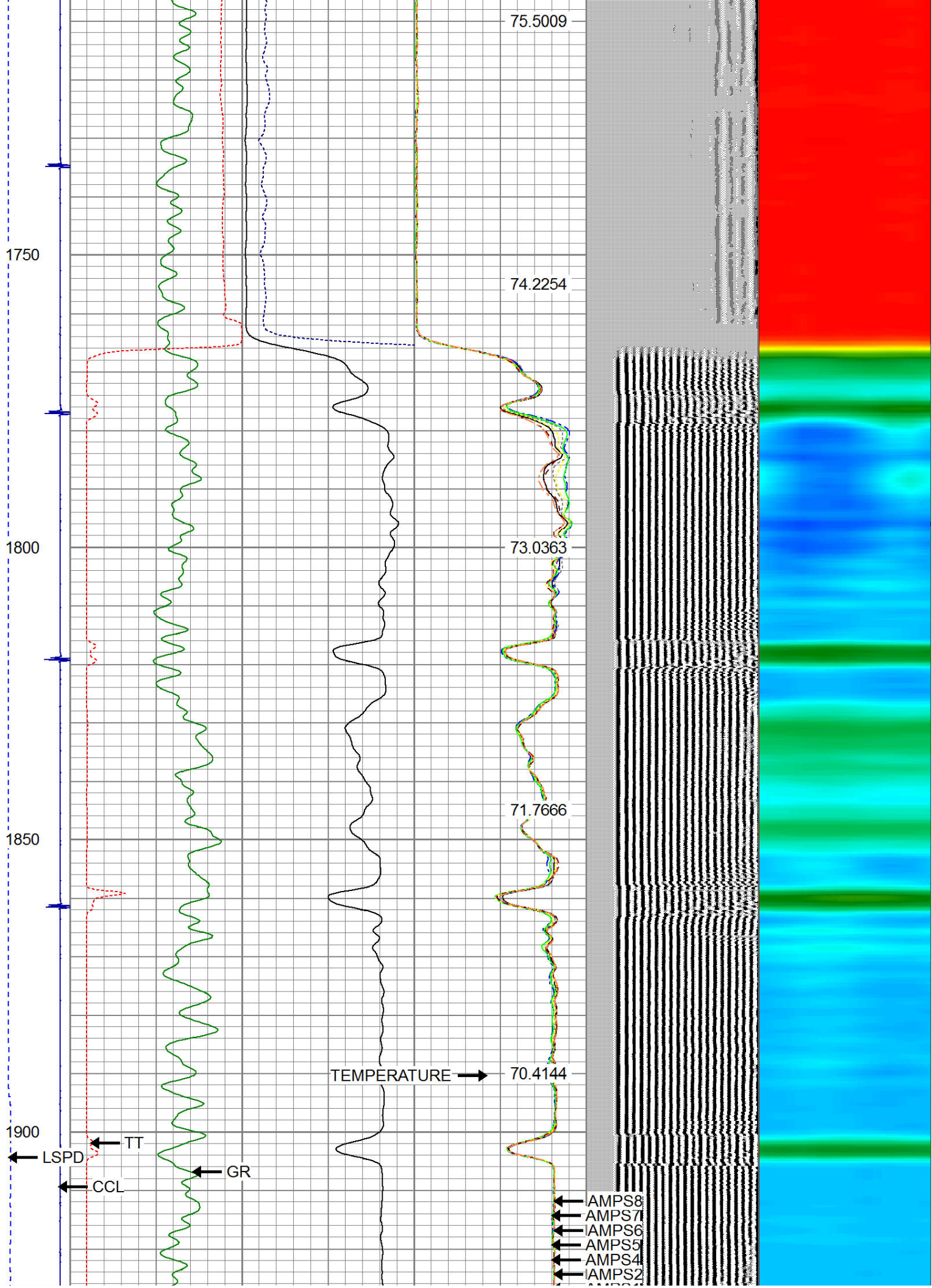
79.5865

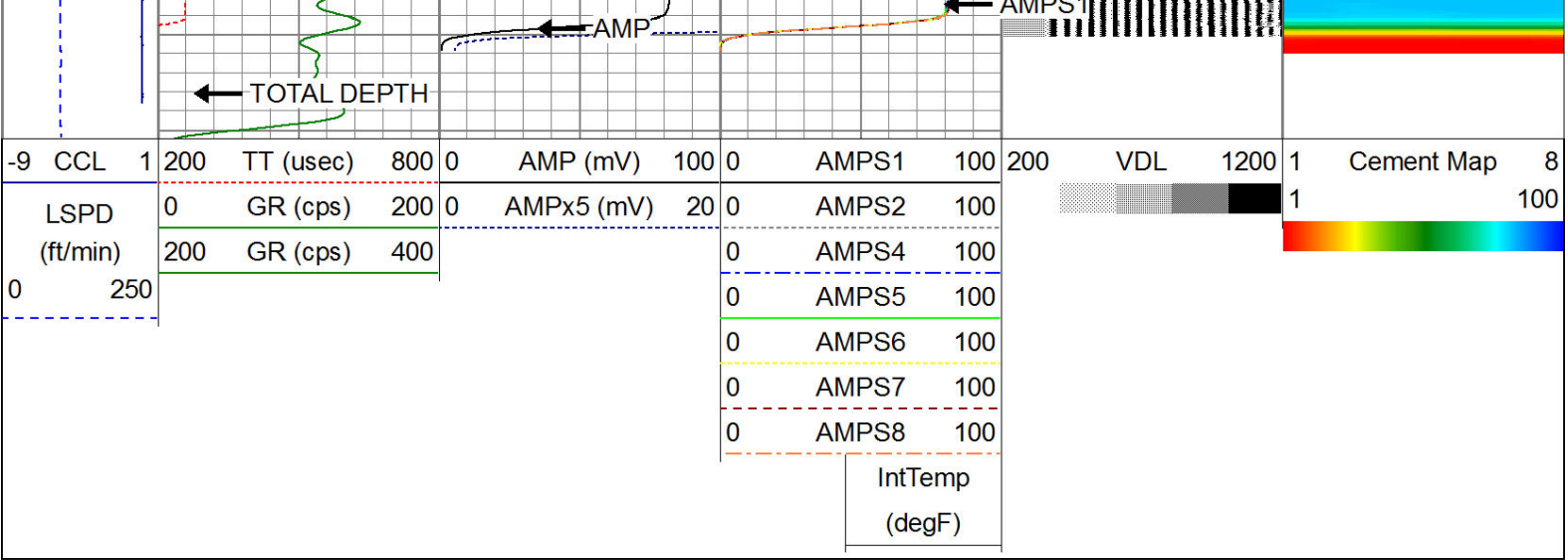
78.8048

77.7904

76.7258







WARRIOR
ENERGY SERVICES

Company KERR-McGEE OIL & GAS ONSHORE LP
Well CARMA 7-25
Field WATTENBERG
County WELD
State COLORADO