

Digital Cement Bond Log
Gamma Ray
CCL

Company		Kerr McGee Oil & Gas	
Well		RADEMACHER EDWARD #1	
Field		WATTENBERG	
County		WELD	
State		COLORADO	
Company		Kerr McGee Oil & Gas	
Well		RADEMACHER EDWARD #1	
Field		WATTENBERG	
County		WELD	
State		COLORADO	
Location:		API # : 05-123-7852	
Permanent Datum		GL	
Log Measured From		K.B. 10'	
Drilling Measured From		KB	
SEC 25		TWP 3N	
RGE 68W		Elevation 4901	
NW/SW		K.B. 4911	
		D.F. 4910	
		G.L. 4901	
Other Services			
Date		3-15-2014	
Run Number		ONE	
Depth Driller		7805	
Depth Logger		7152	
Bottom Logged Interval		7145	
Top Log Interval		SURFACE	
Open Hole Size		4.5	
Type Fluid		WATER	
Density / Viscosity		1.0	
Max. Recorded Temp.		211	
Estimated Cement Top		6972	
Time Well Ready		NA	
Time Logger on Bottom		NA	
Equipment Number		NA	
Location		GREELEY	
Recorded By		C. JONES	
Witnessed By		L. MORALES	
Run Number		ONE	
Bit		From	
To		Size	
Weight		From	
To		Tubing Record	
ONE		TWO	
Casing Record		Size	
Surface String		Wgt/Ft	
Prot. String		Top	
Production String		Bottom	
Liner			

<<< Fold Here >>>

All interpretations are opinions based on inferences from electrical or other measurements and we cannot and do not guarantee the accuracy or correctness of any interpretation, and we shall not, except in the case of gross or willful negligence on our part, be liable or responsible for any loss, costs, damages, or expenses incurred or sustained by anyone resulting from any interpretation made by any of our officers, agents or employees. These interpretations are also subject to our general terms and conditions set out in our current Price Schedule.

Comments



RAN C.B.L. TO VERIFY CEMENT BOND.
TIED INTO SCHLUMBERGER C.B.L. FROM 11-20-1995.
CEMENT COVERAGE OVER SHANNON. 4696'-4334'

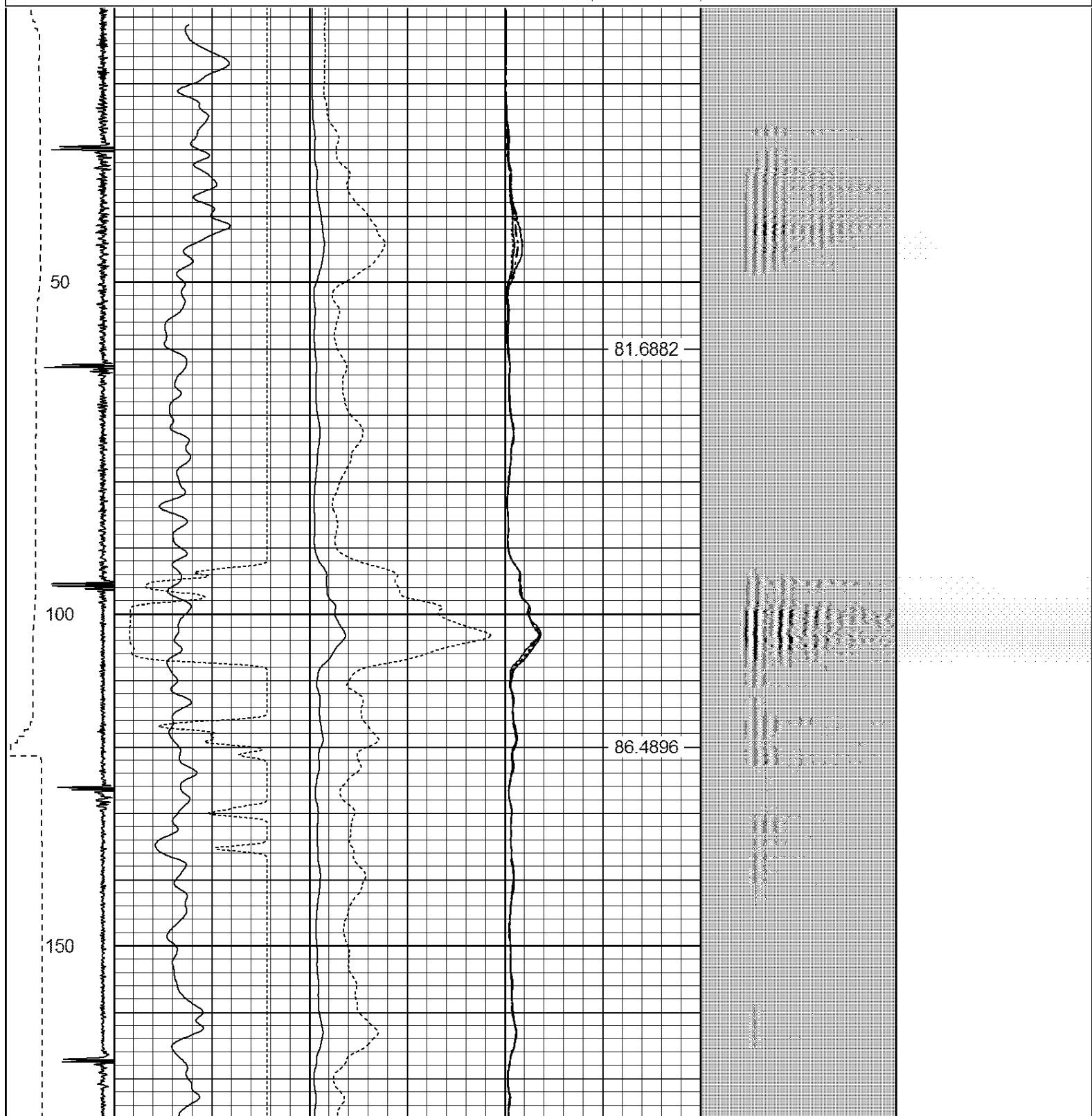
THANK YOU FOR USING WARRIOR ENERGY SERVICES!!!!!!

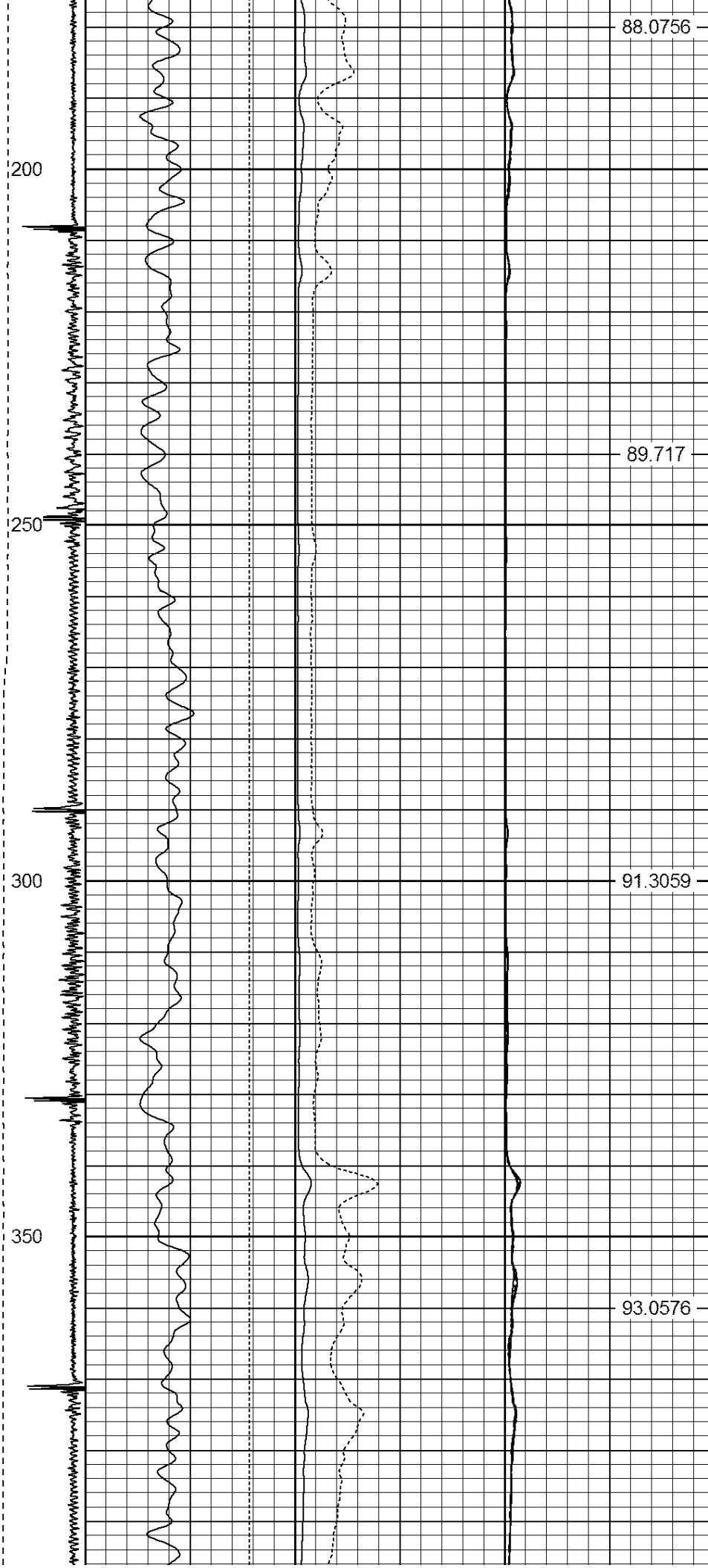
Sensor	Offset (ft)	Schematic	Description	Len (ft)	OD (in)	Wt (lb)

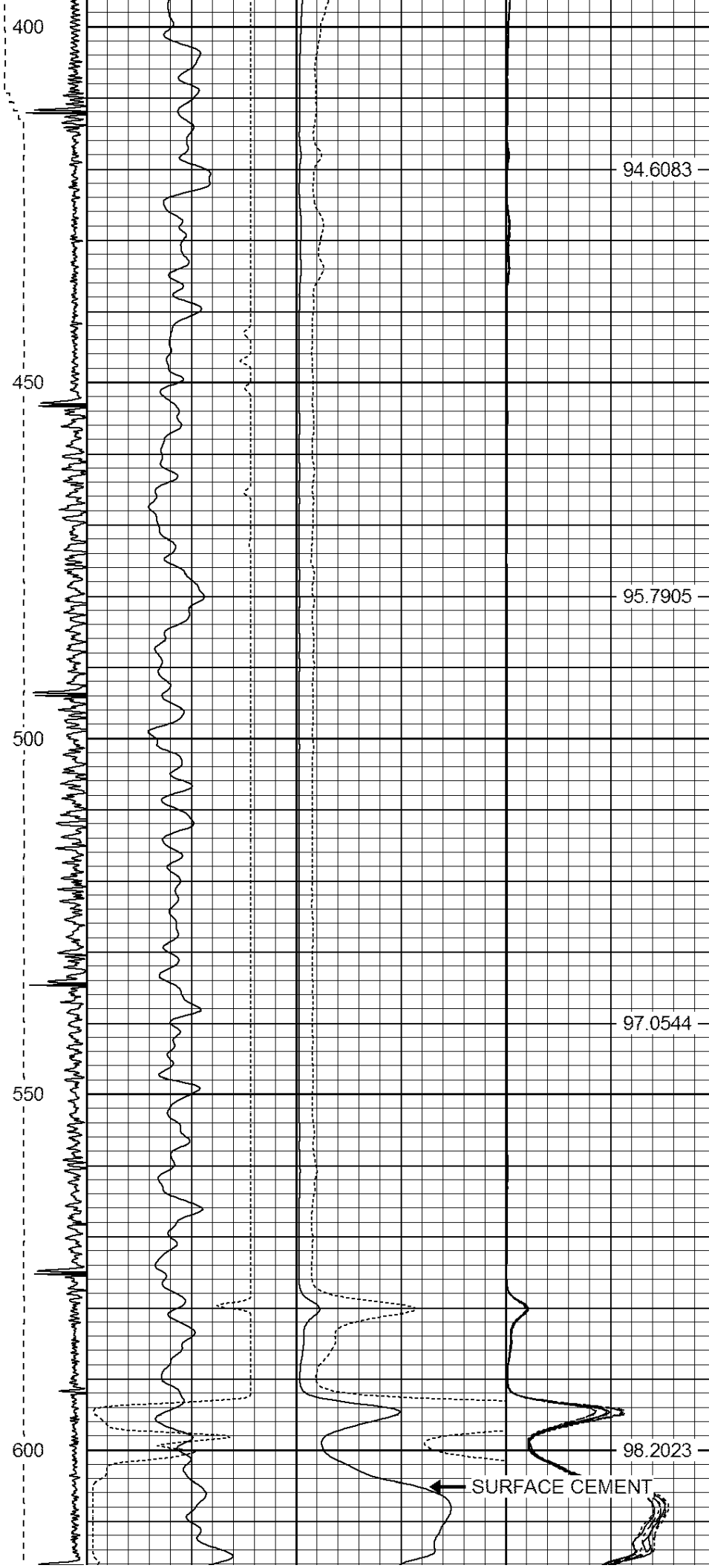
Tool Name	Length (ft)	Weight (lb)	O.D. (in)	Notes
PTS275	2.83	2.75		
HEADVOLT	14.75			
IntTemp	13.33			
WVFS3FT	10.08			
WVFCAL	10.08			
WVFS1	10.08			
WVFS2	10.08			
WVFS3	10.08			
WVFS4	10.08			
WVFS5	10.08			
WVFS6	10.08			
WVFS7	10.08			
WVFS8	10.08			
WVF5FT	9.08			
CNLSC	6.00			
CNSSC	5.17			
CCL	3.64			
GR	0.90			
RBT-Probe (Base)	8.92	2.75	90.00	Probe Radli Bond Tool with Digital Telemetry
CNT-Probe_B (275)	1.50	2.75	40.00	6 bow centralizer
GR-Probe (275)	4.33	2.75	30.00	Probe 2.75"

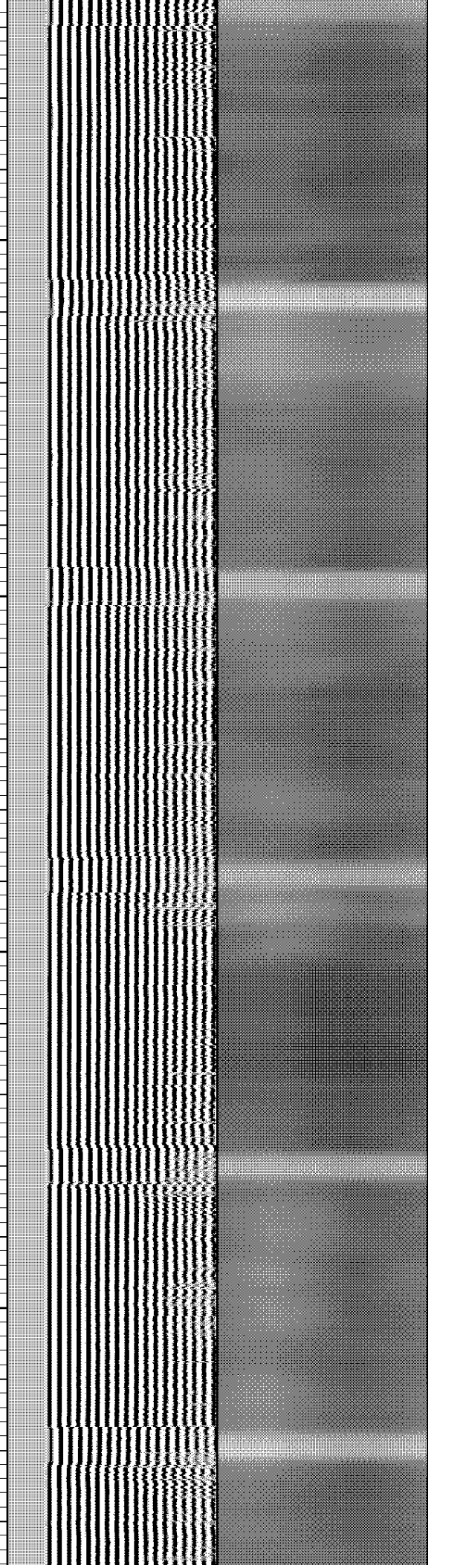
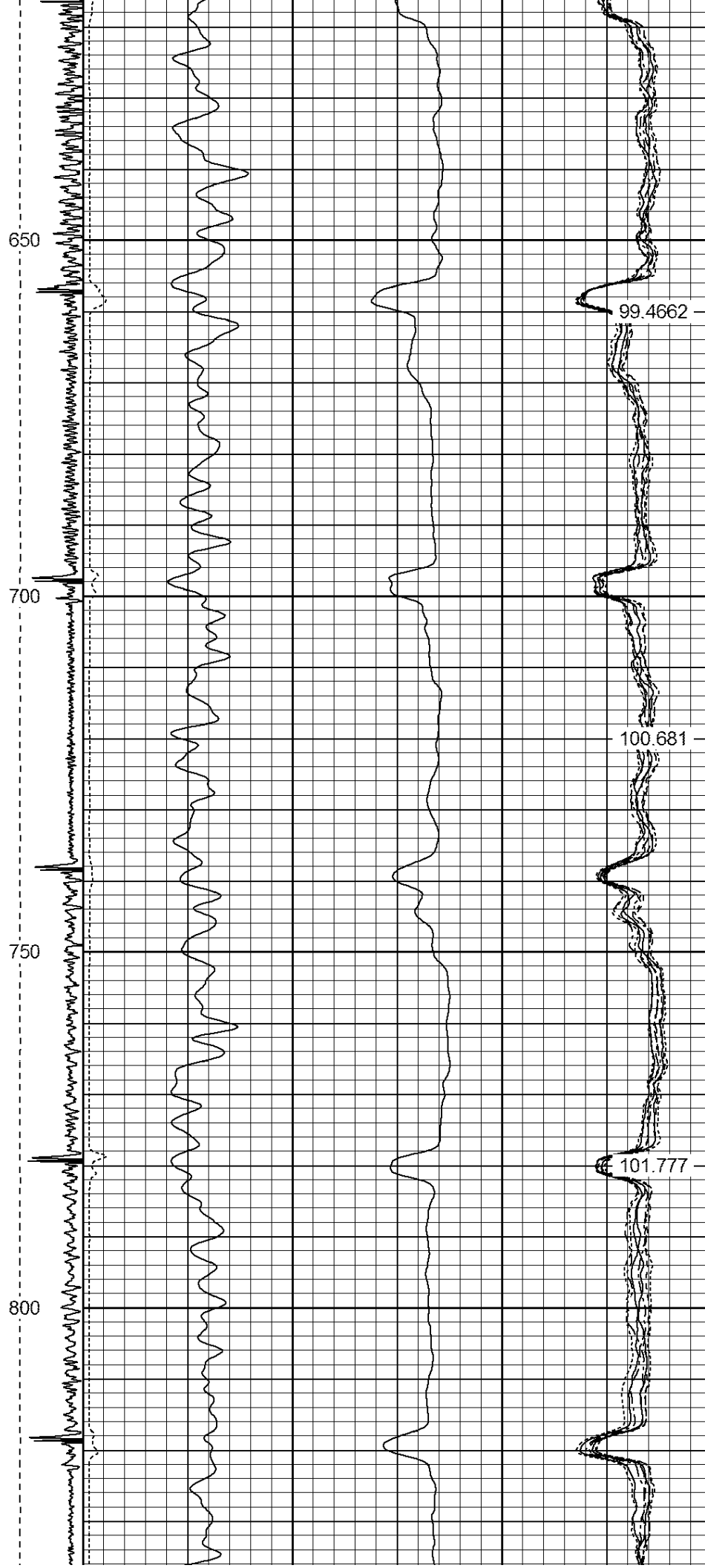
Dataset: rademacher edward unit 1.db: field/well/run1/pass8
Total Length: 17.58 ft
Total Weight: 160.00 lb
O.D. 2.75 in

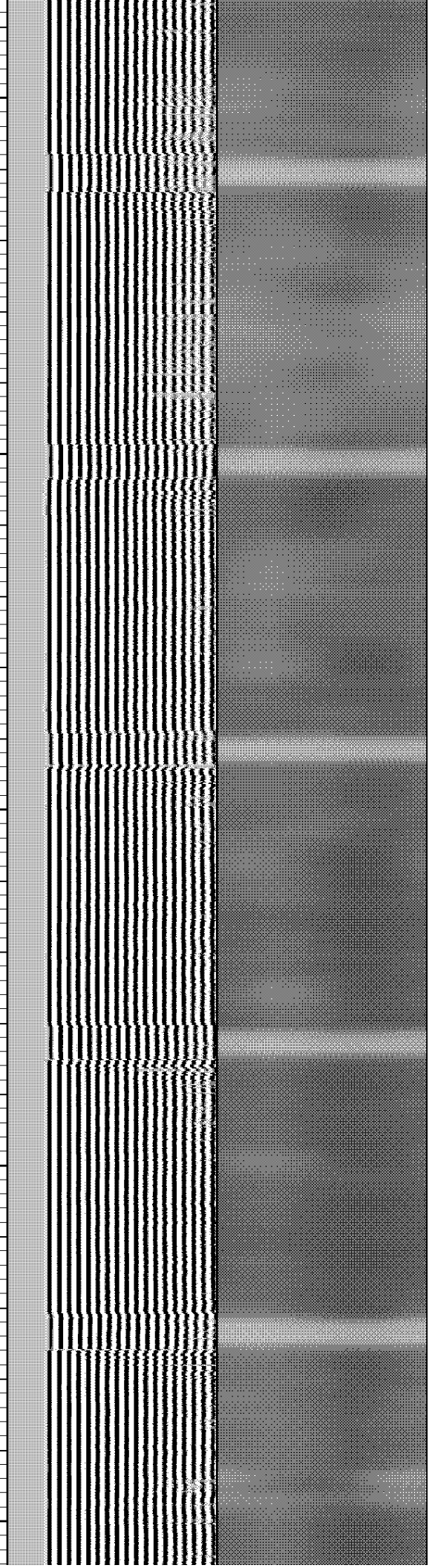
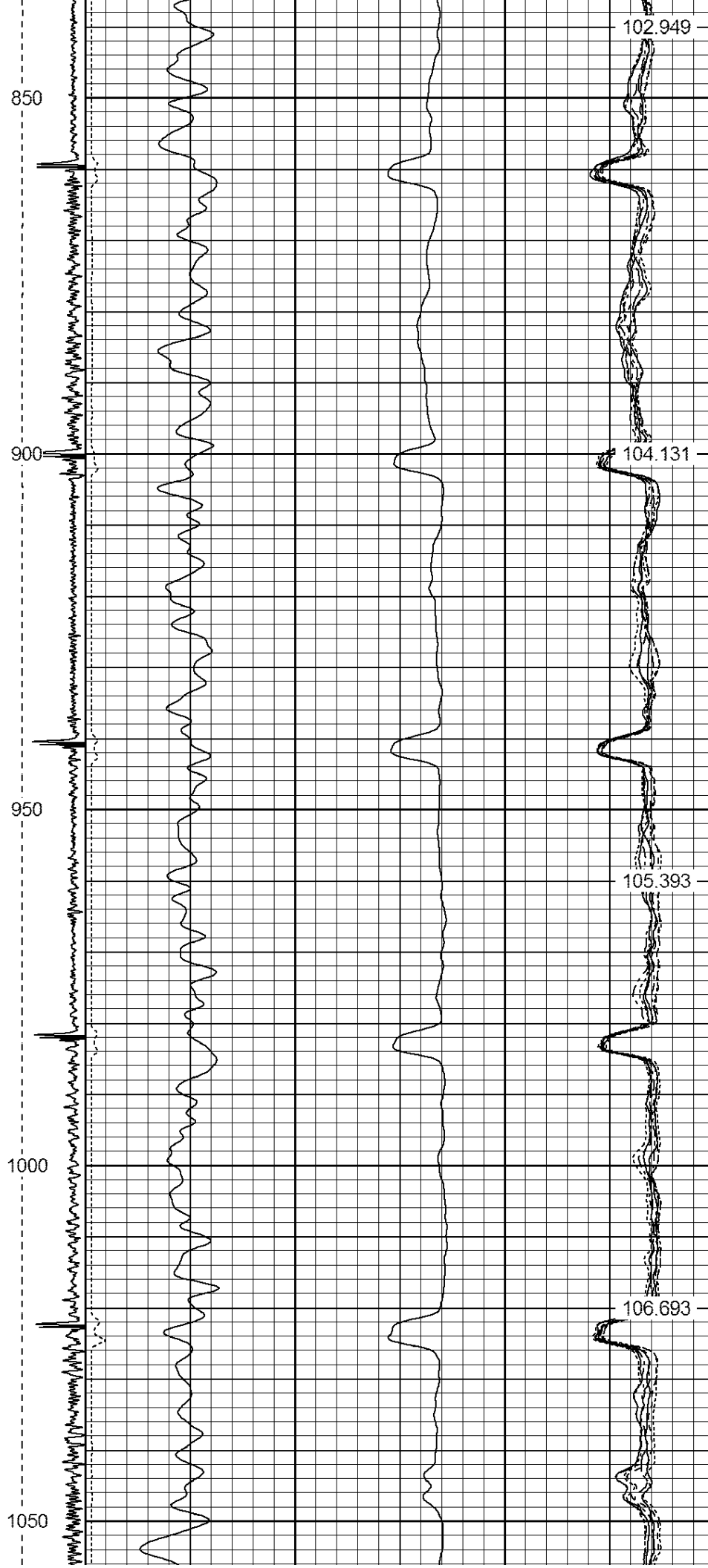
-9	CCL	1	250	TT (usec)	950	0	AMP (mV)	100	0	AMPS1	100	200	VDL	1200	1	Cement Map	8	
LSPD (ft/min)			0	GR (GAPI)	200	0	AMPx5 (mV)	20	0	AMPS2	100			1			100	
			200	GR (GAPI)	400			0	AMPS4	100								
0	250								0	AMPS5	100							
										0	AMPS6	100						
										0	AMPS7	100						
										0	AMPS8	100						
											IntTemp (degF)							

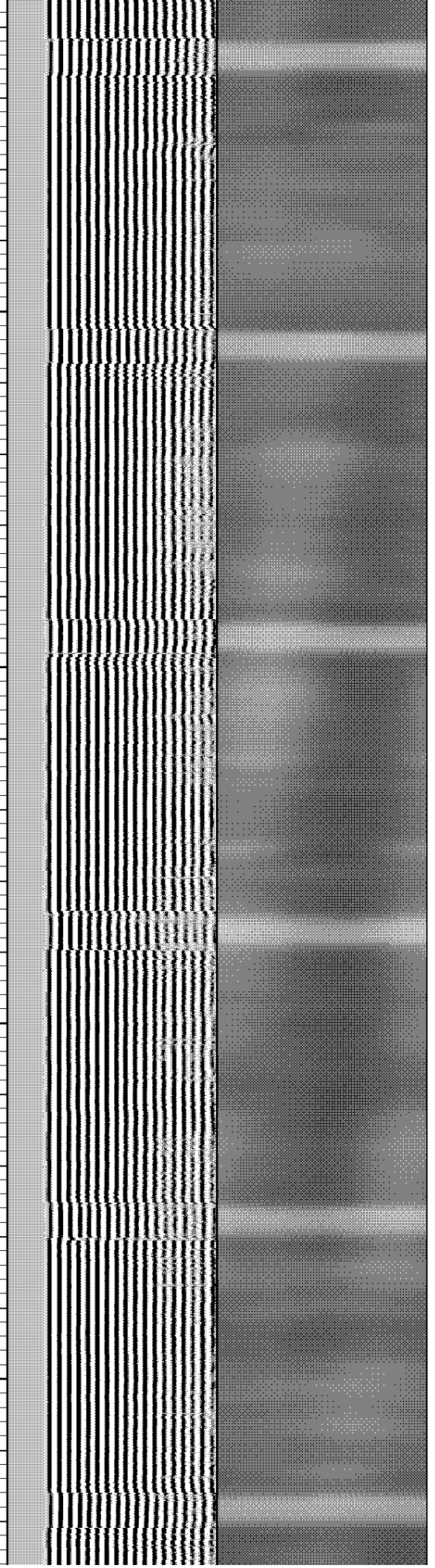
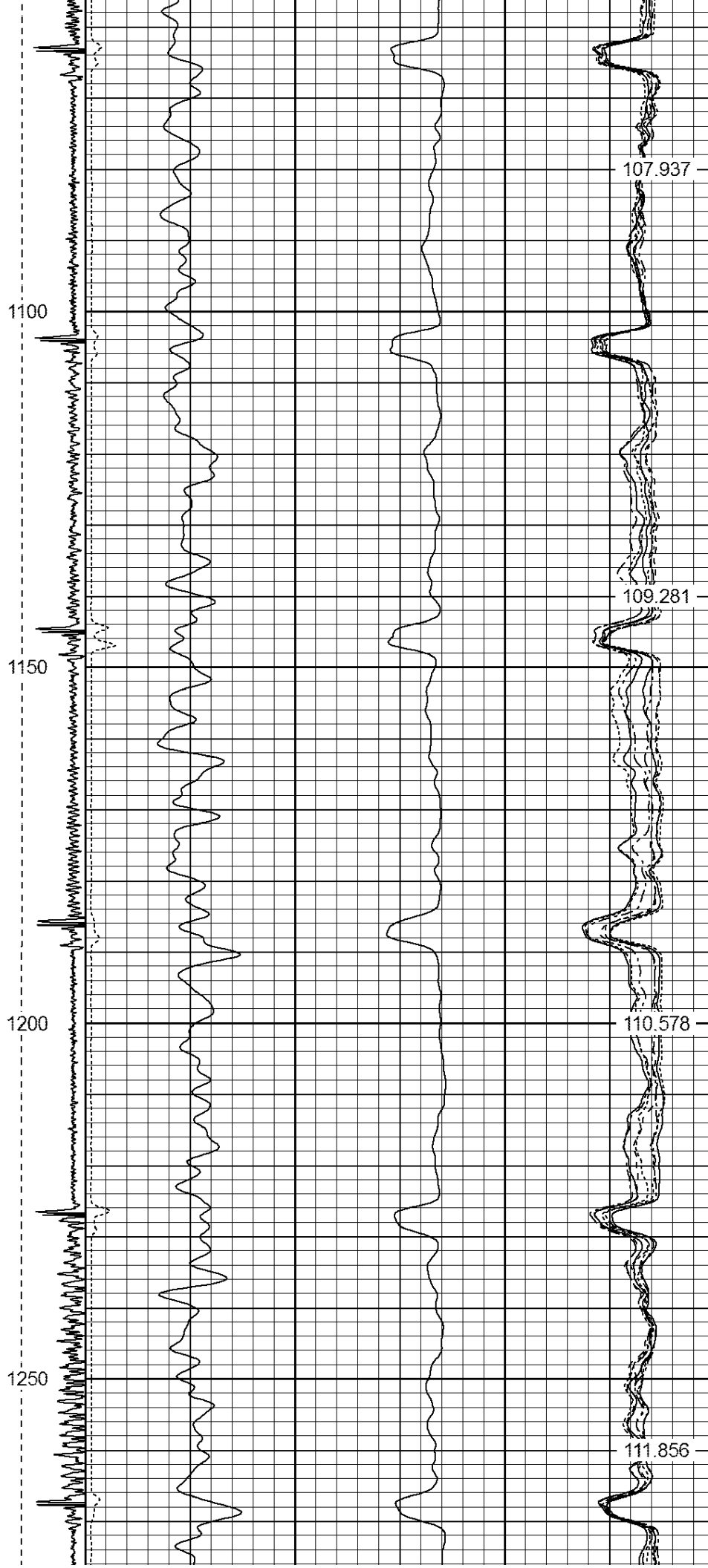


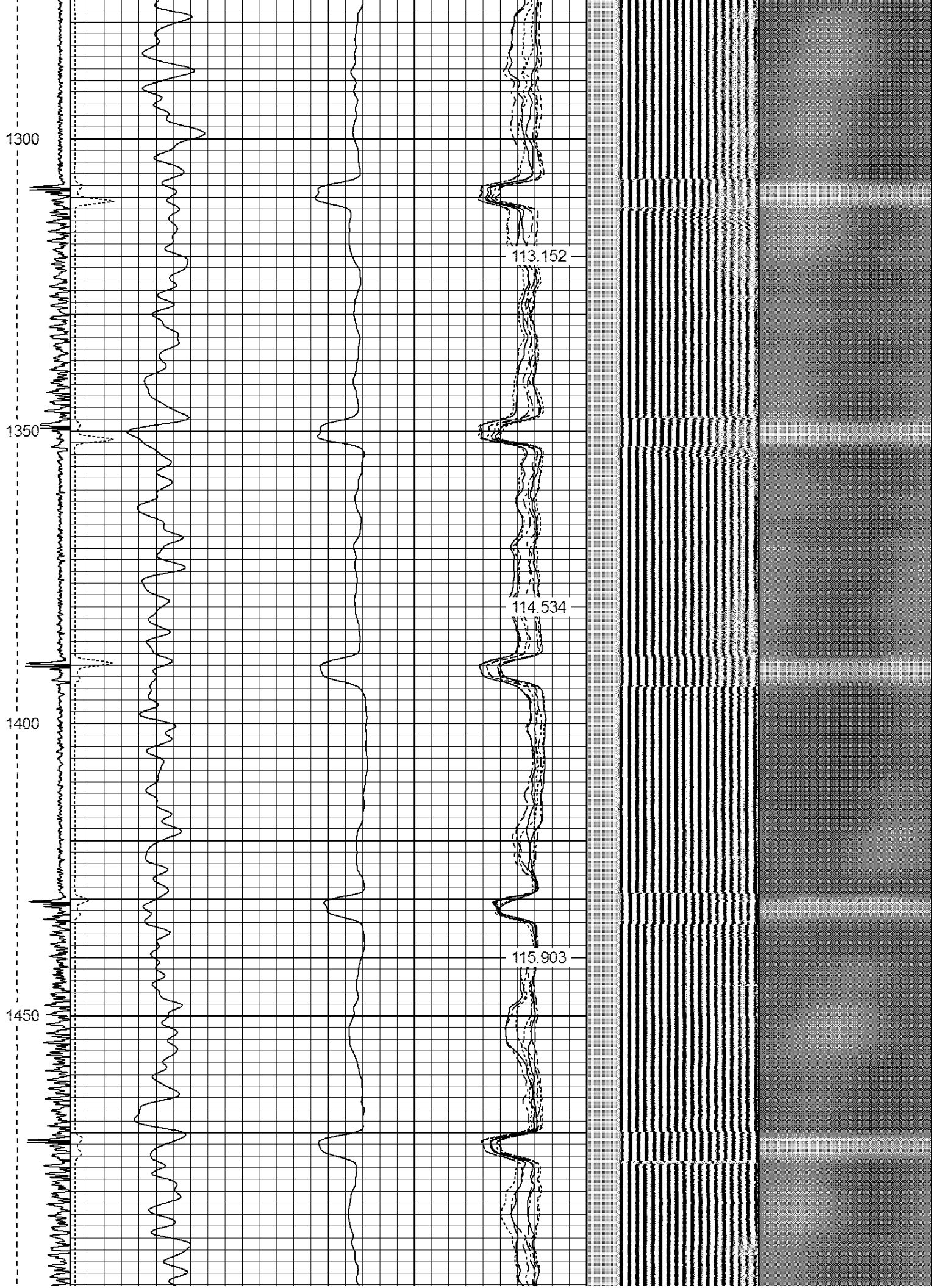


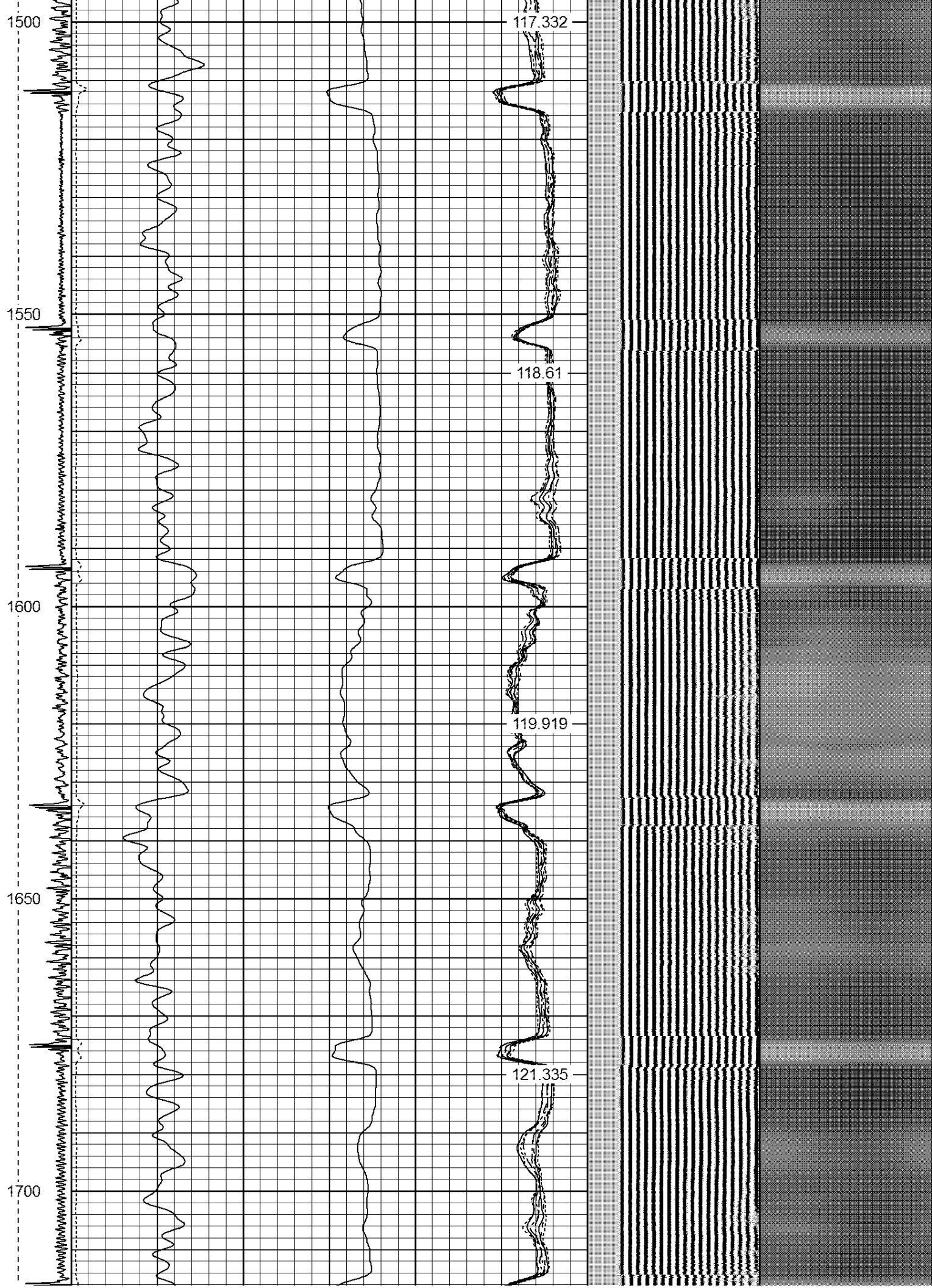


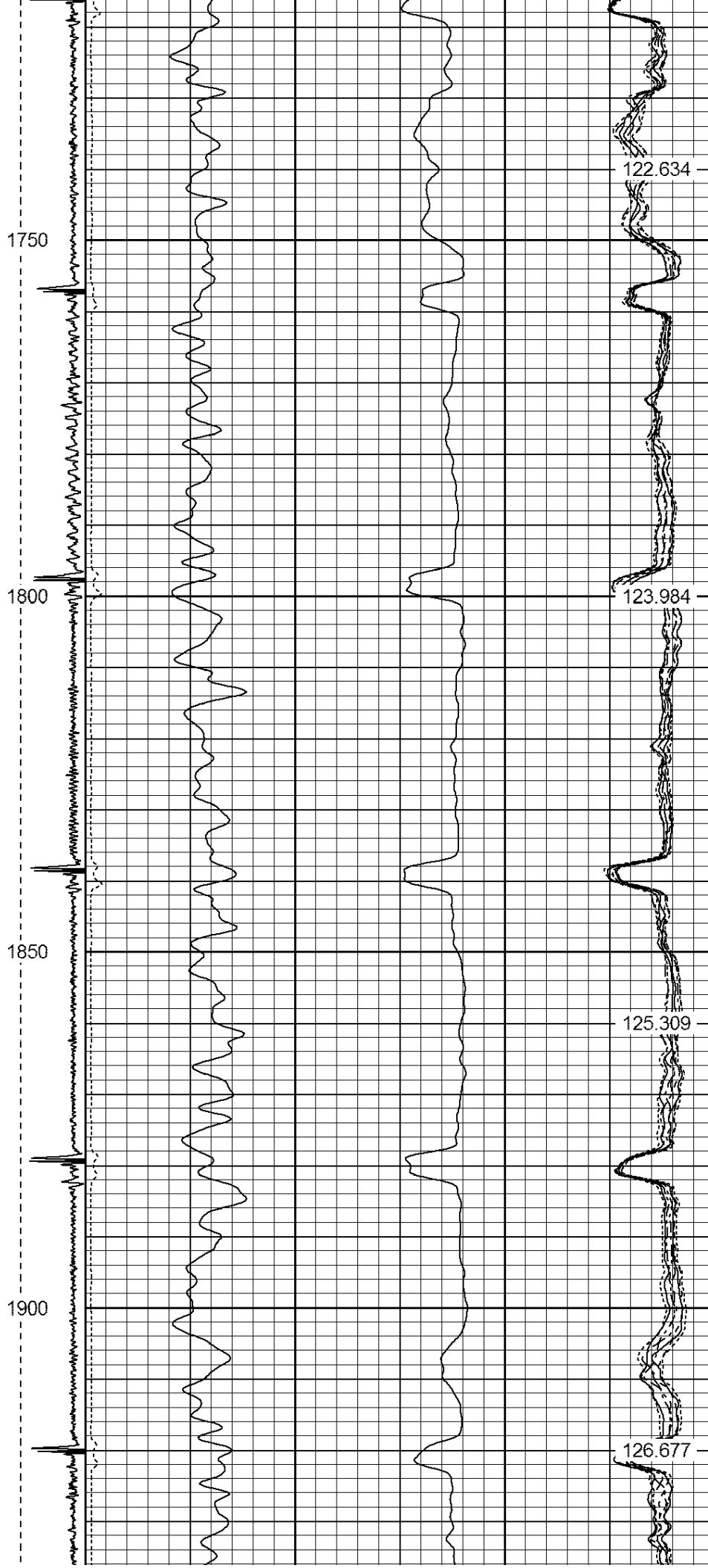












122.634

123.984

125.309

126.677

1950

2000

2050

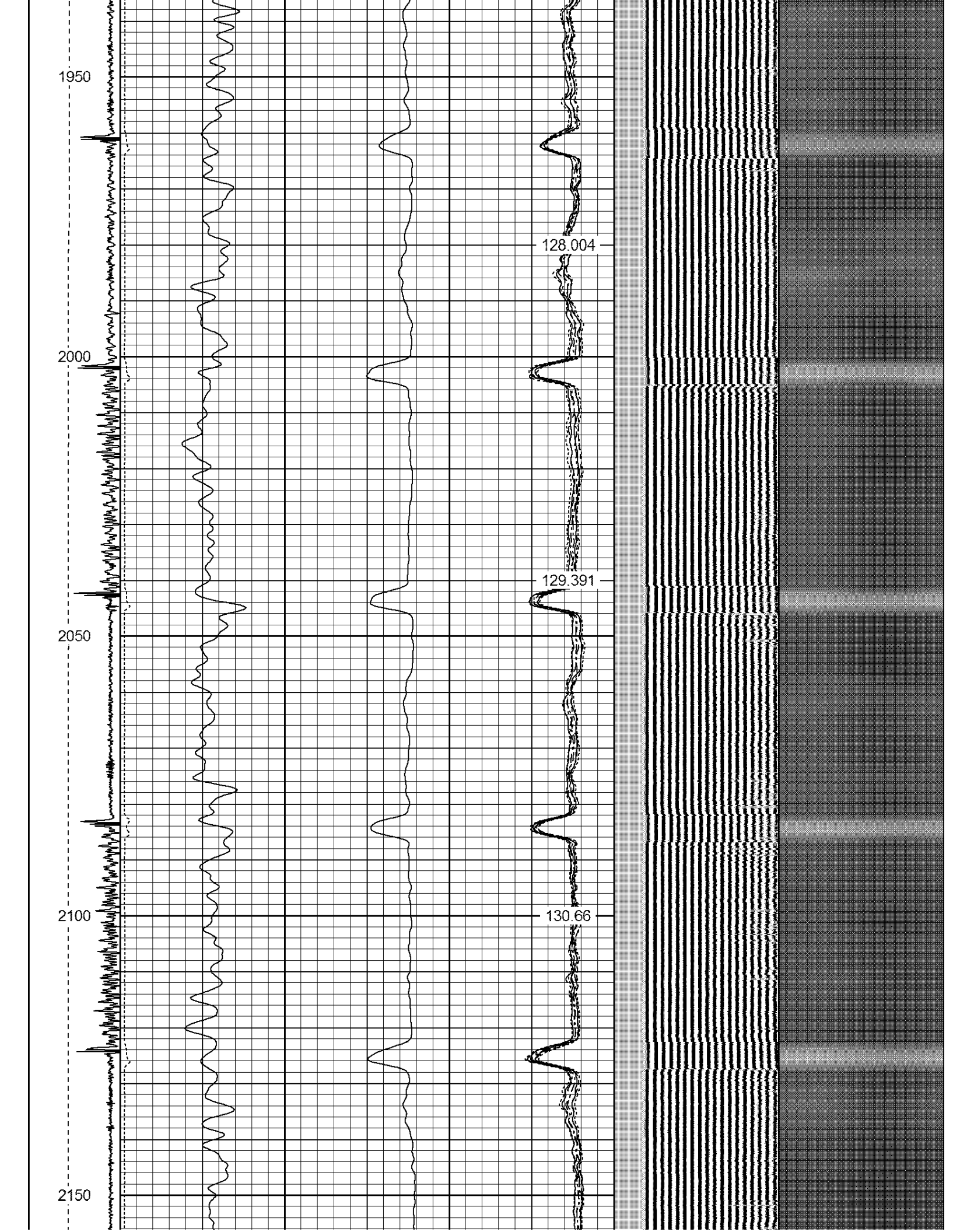
2100

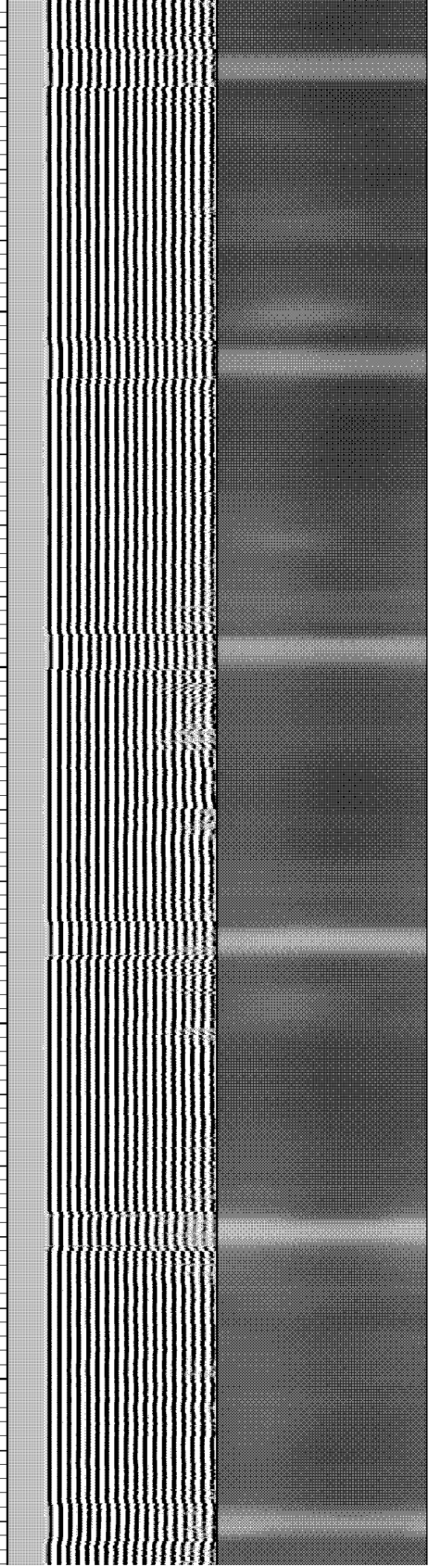
2150

128.004

129.391

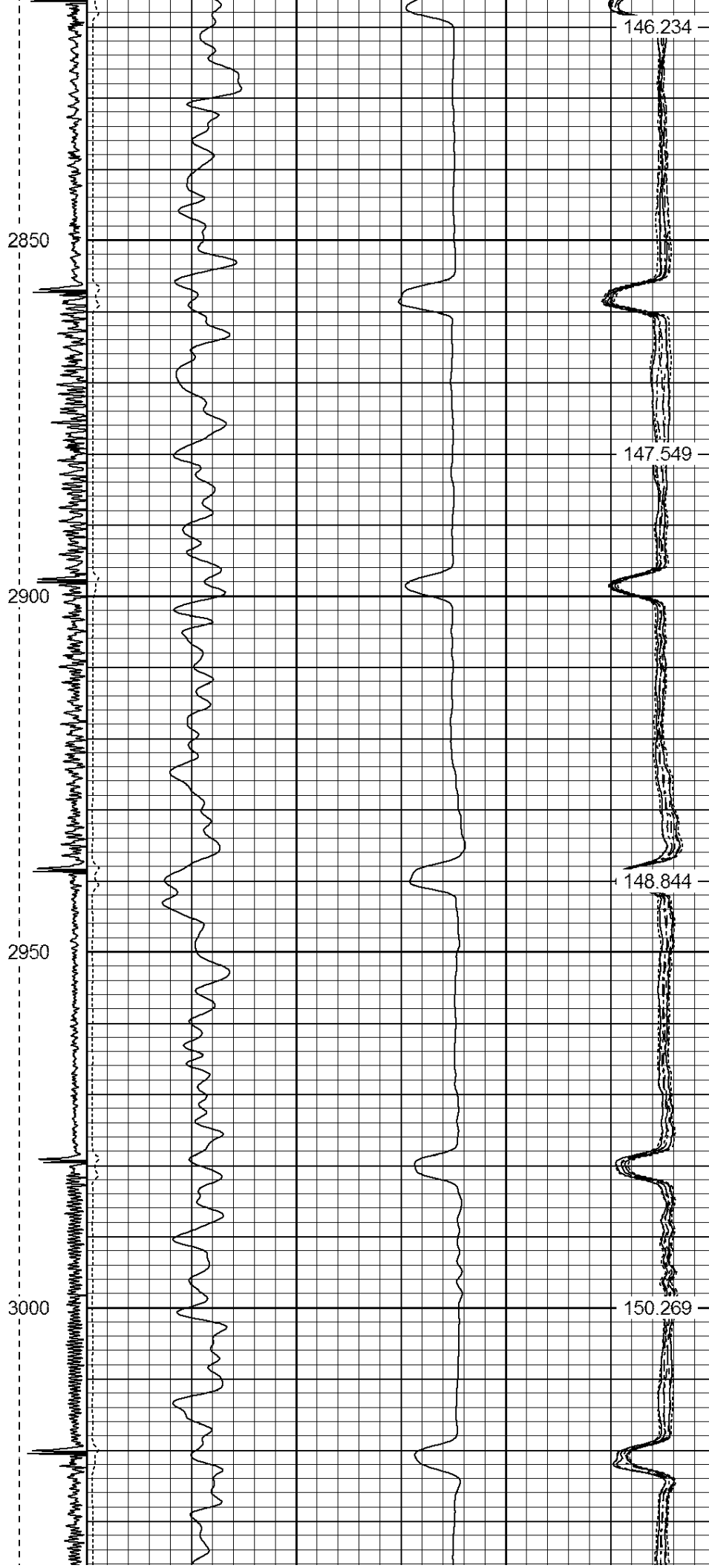
130.66











3050

3100

3150

3200

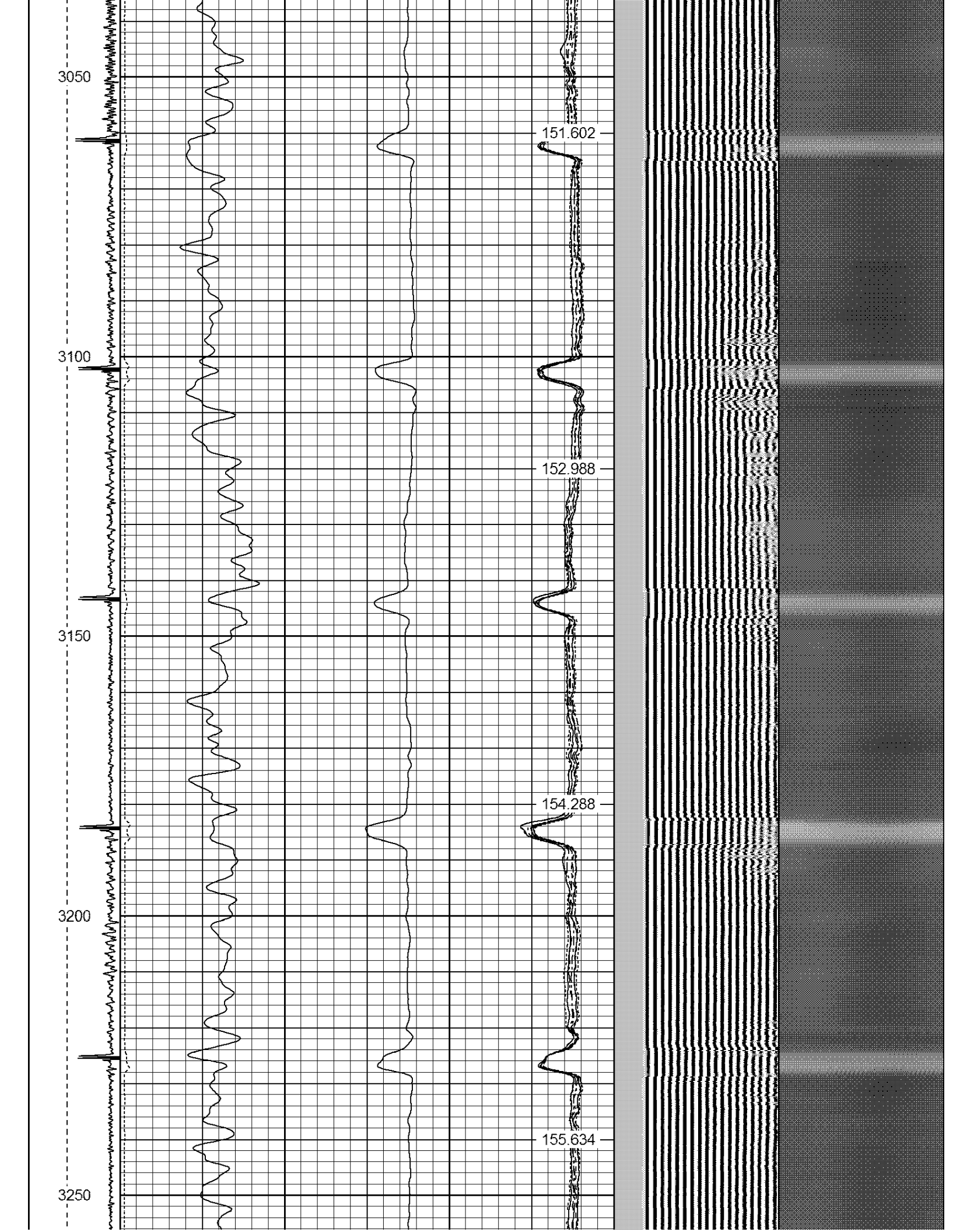
3250

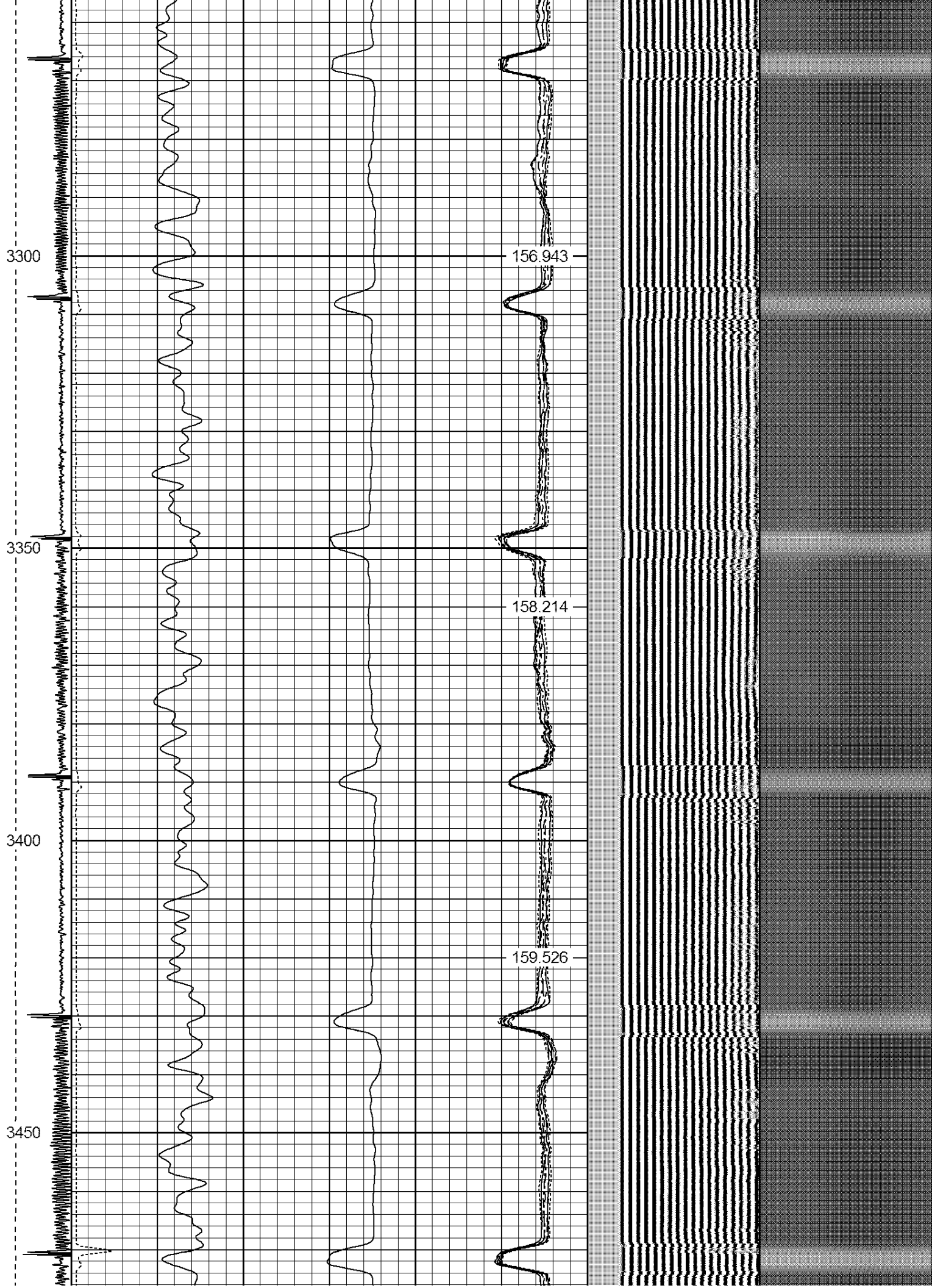
151.602

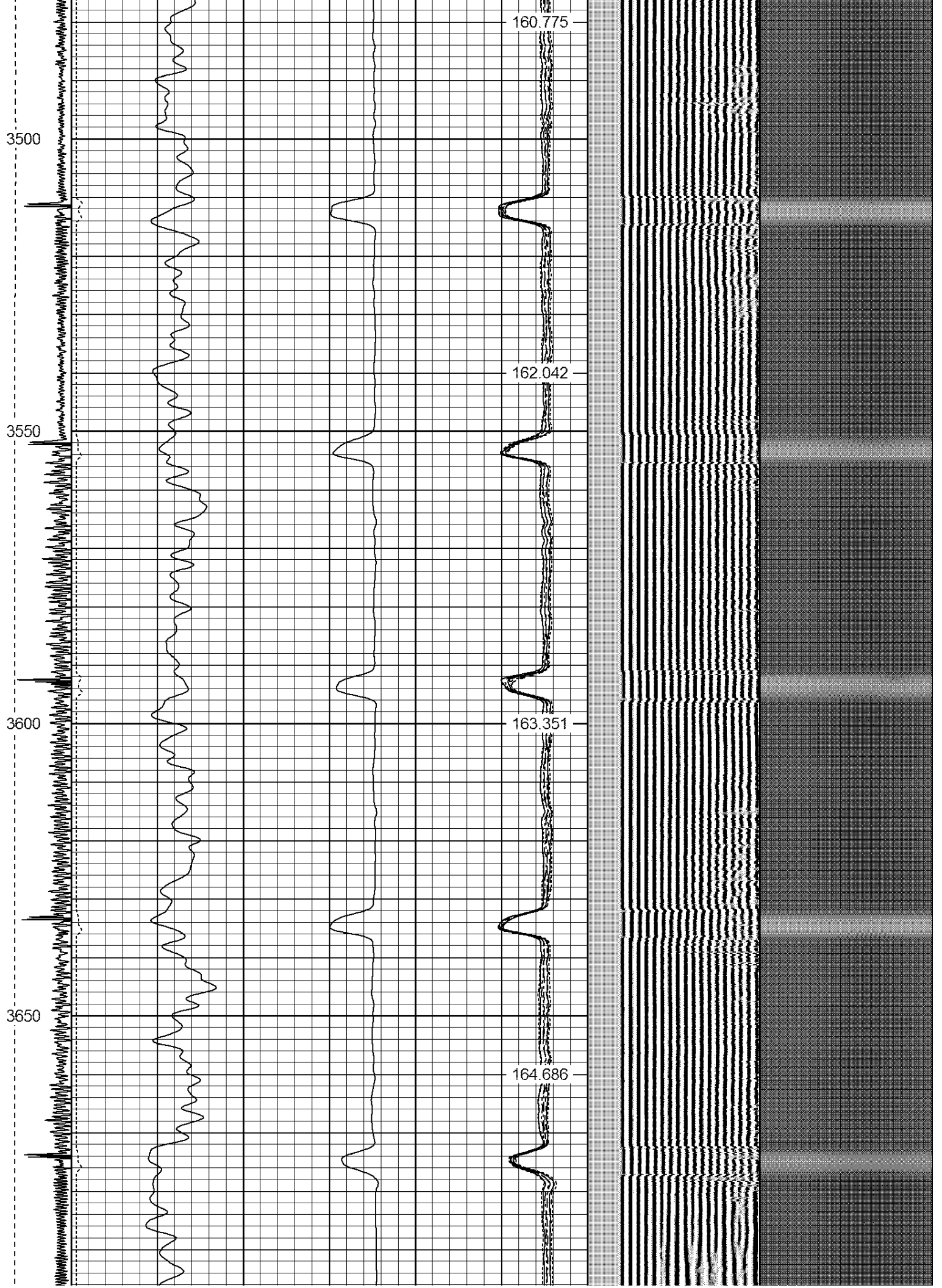
152.988

154.288

155.634







3700

3750

3800

3850

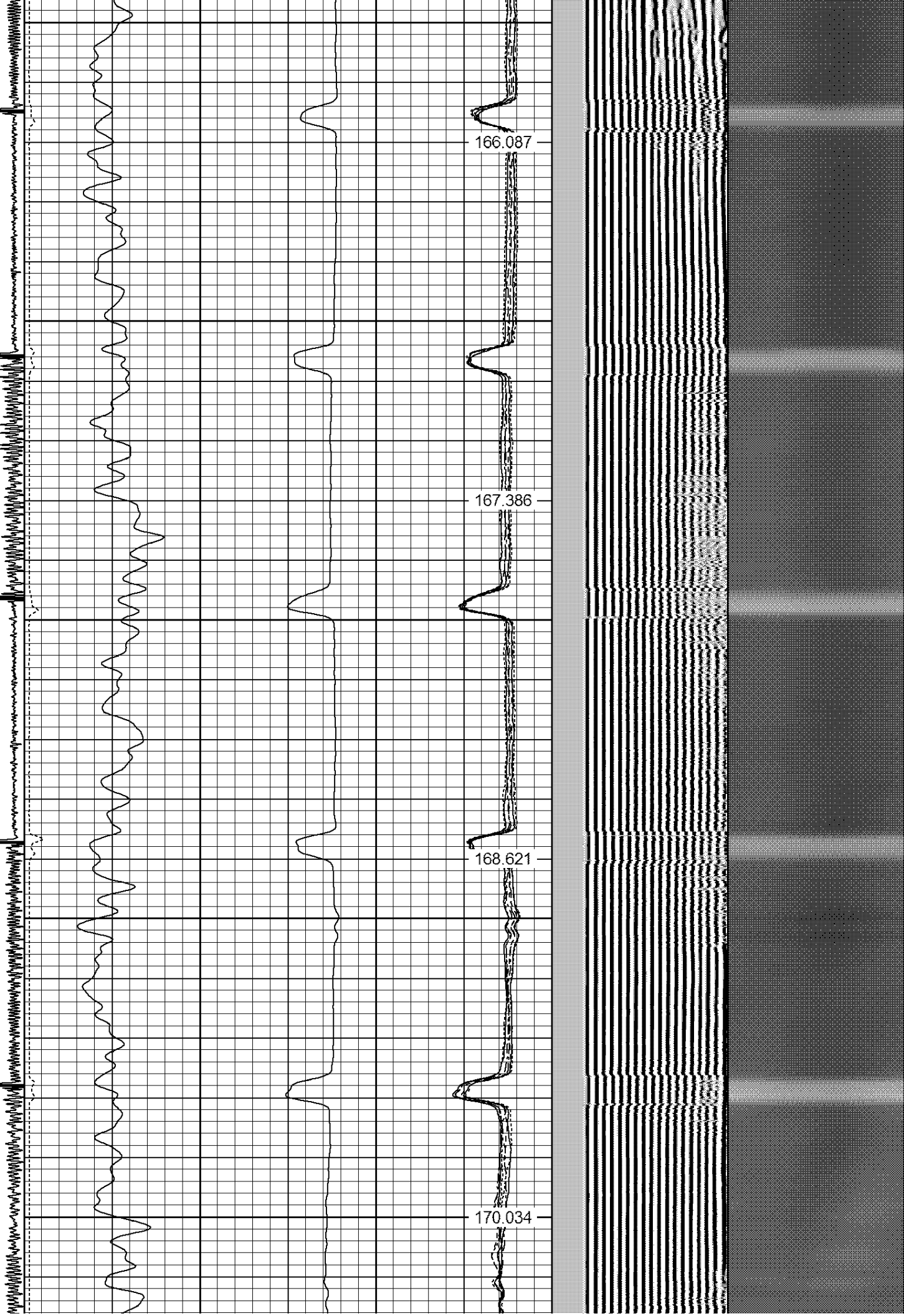
3900

166.087

167.386

168.621

170.034



3950

4000

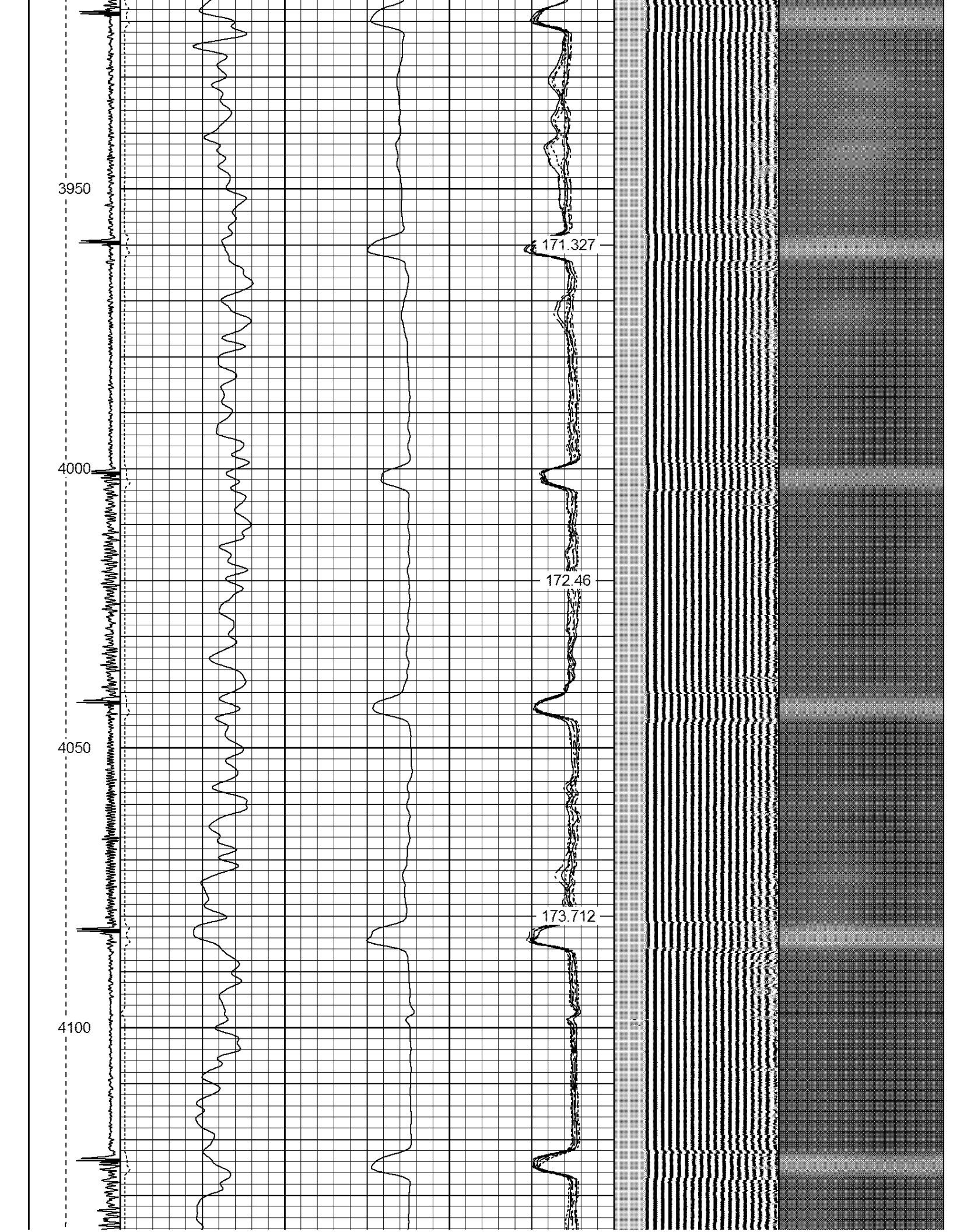
4050

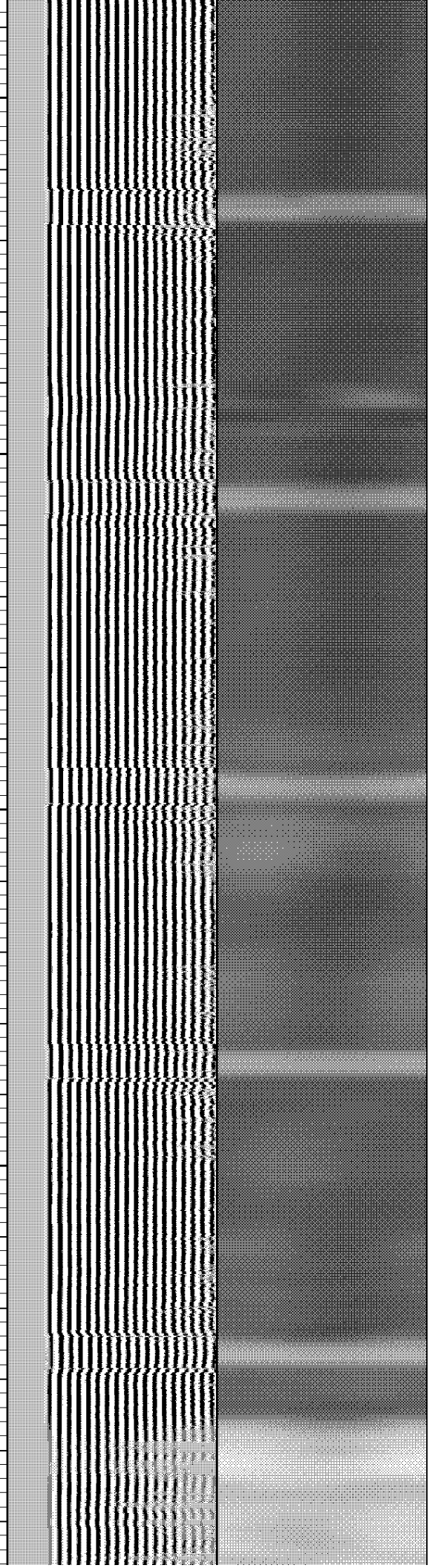
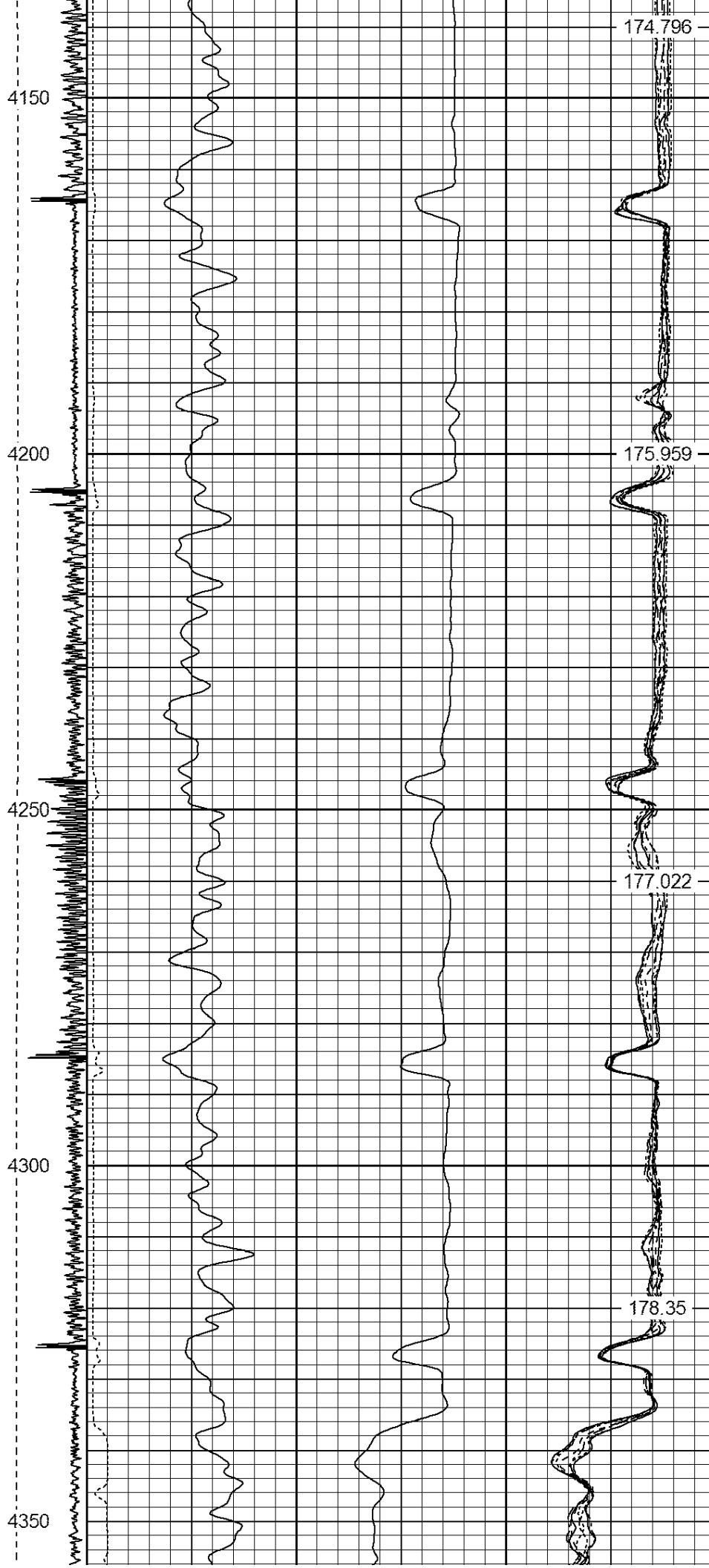
4100

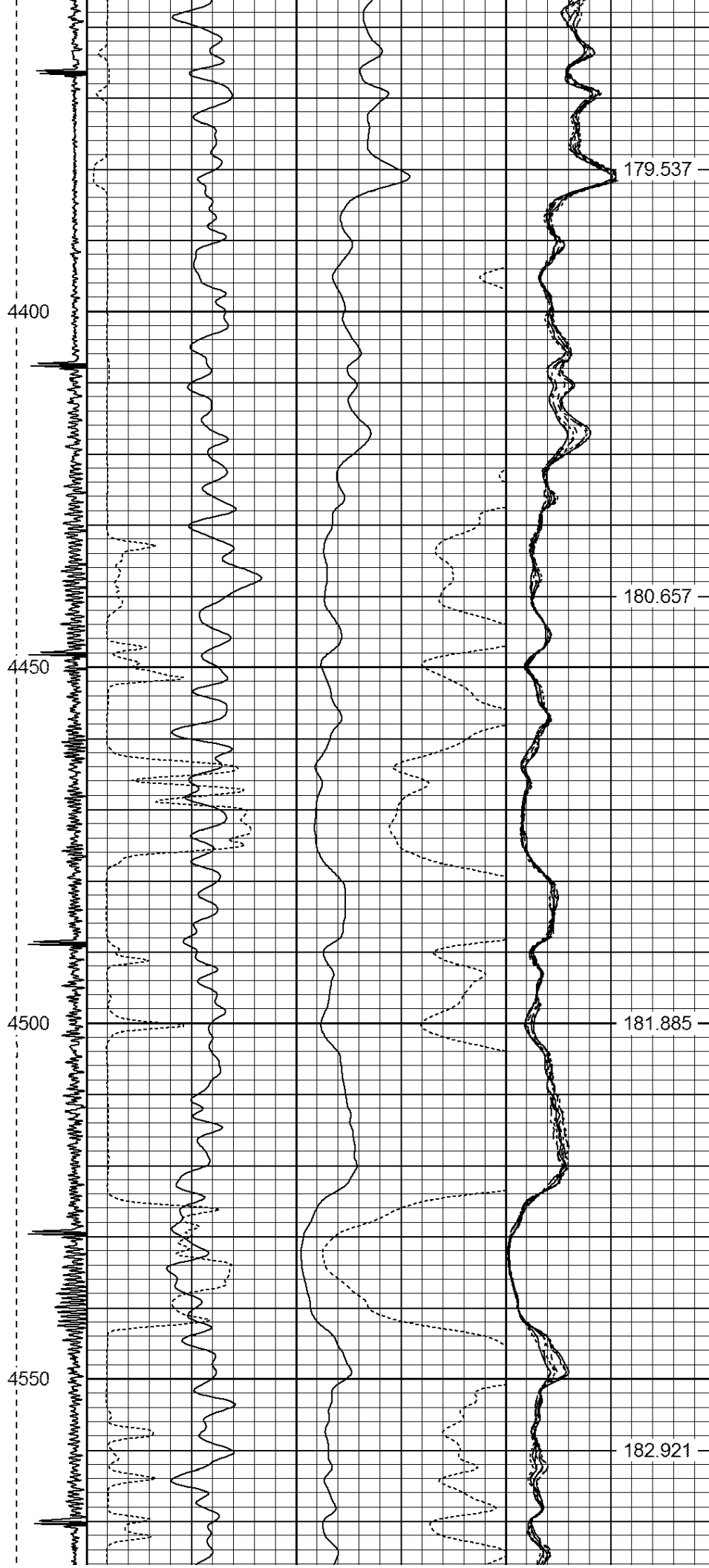
171.327

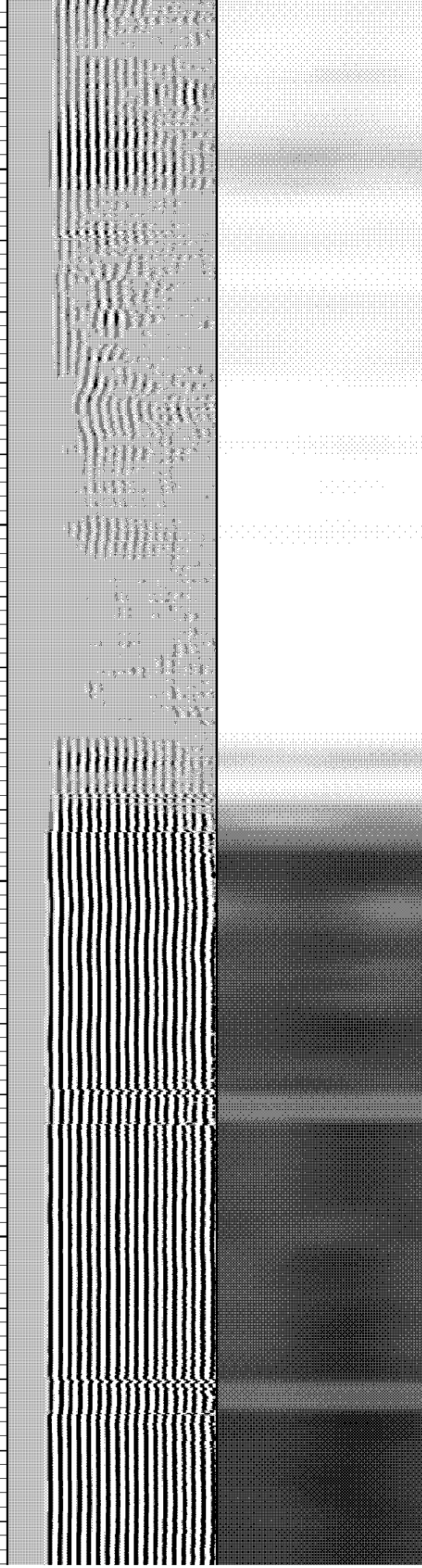
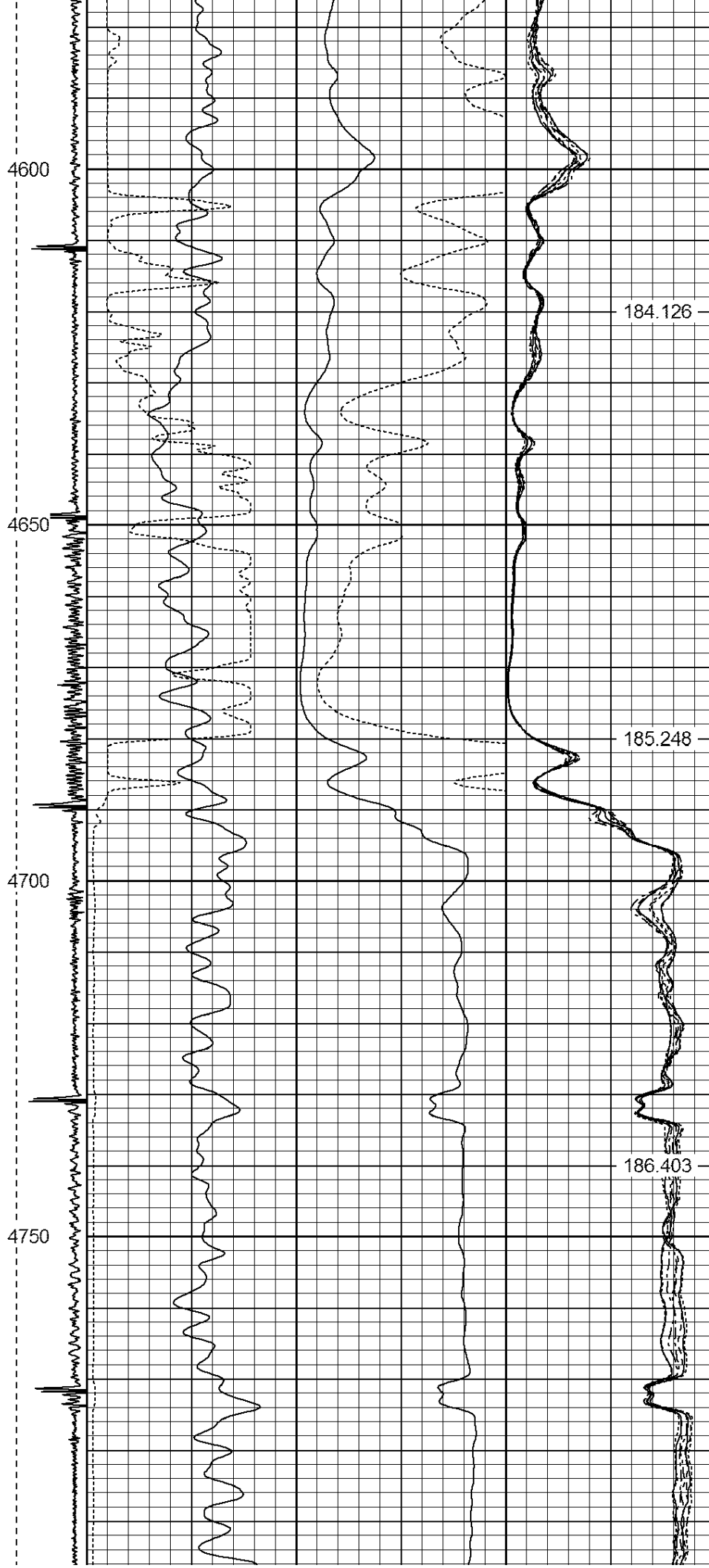
172.46

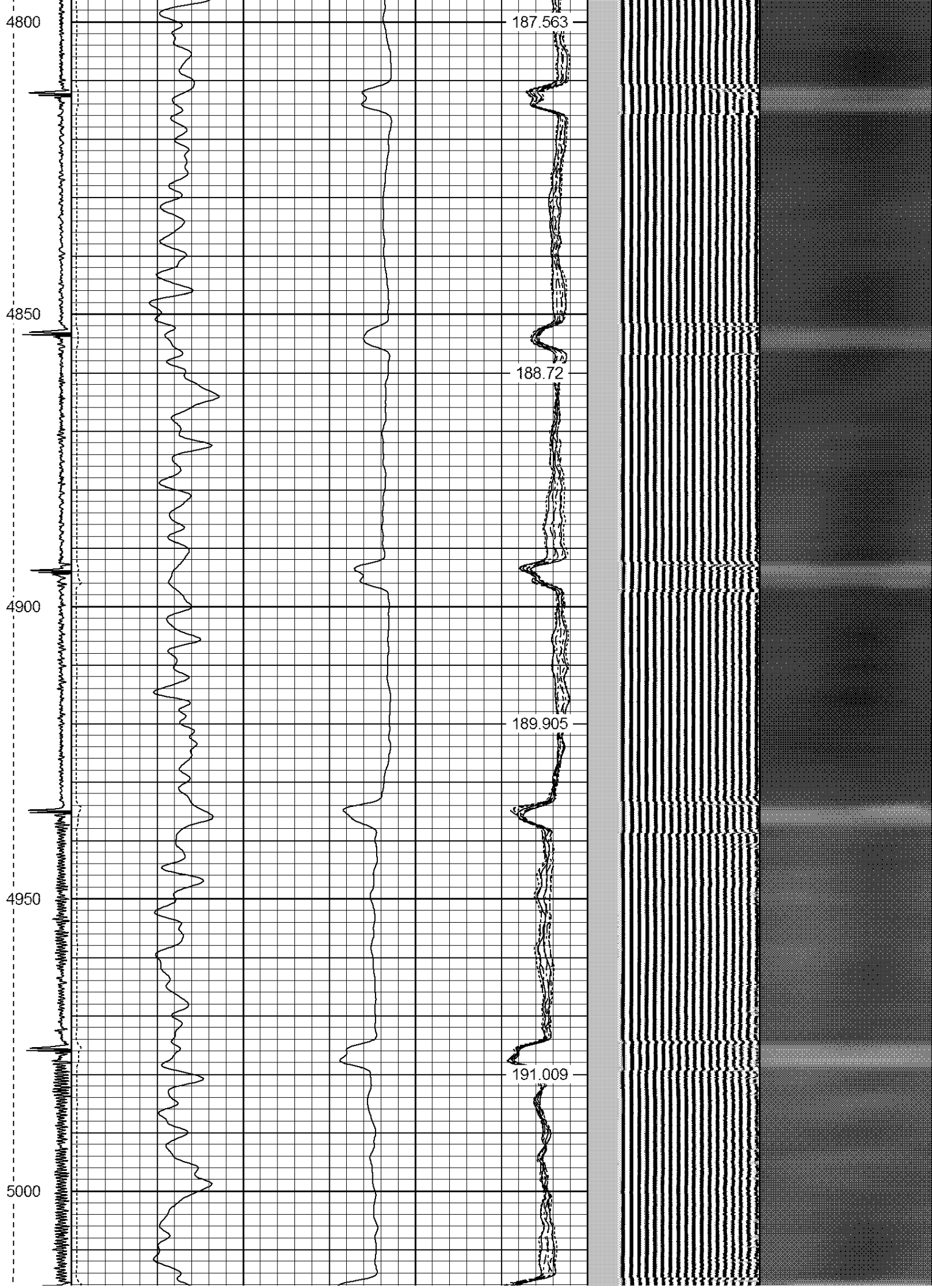
173.712

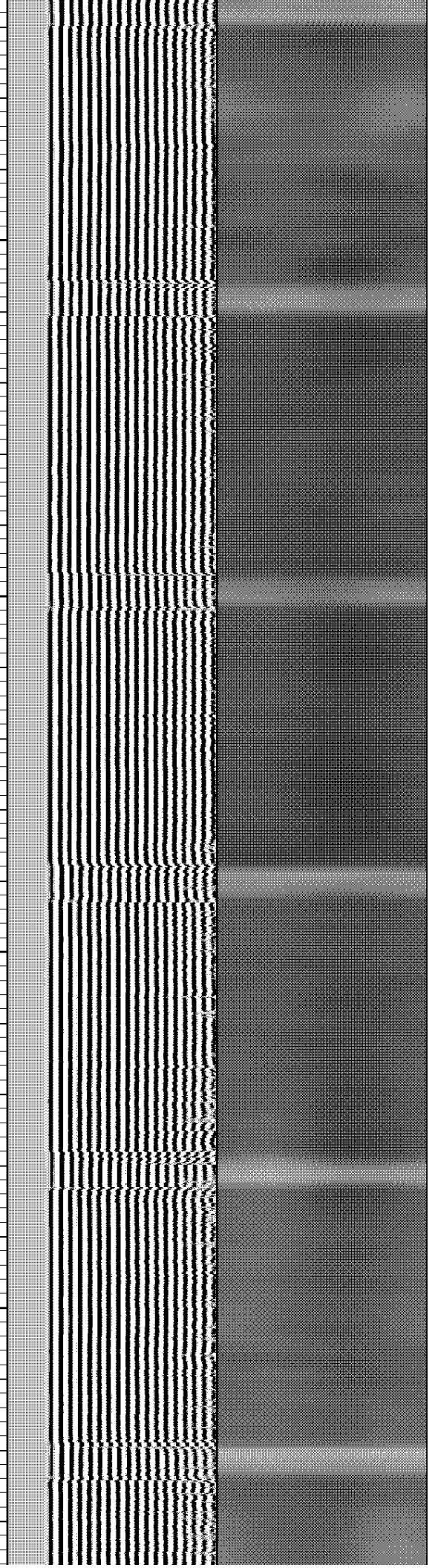
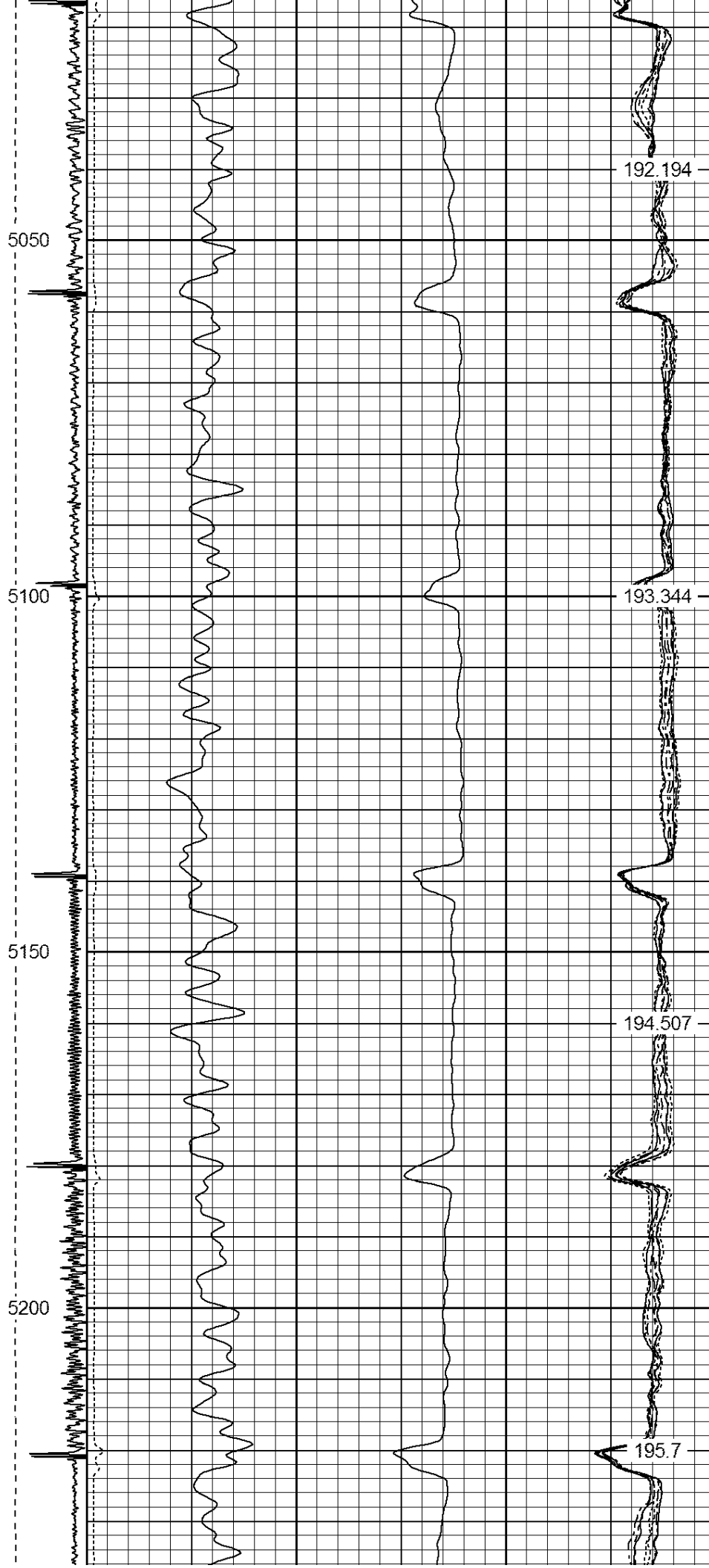












5250

5300

5350

5400

5450

196.796

197.908

199.072

