



**RADIAL CEMENT BOND LOG**  
**GAMMA RAY**  
**CCL**

Company		Kerr McGee Oil & Gas					
Well		RADEMACHER ED UN 1					
Field		Wattenberg					
County		Weld					
State		CO					
Location:		APL # : 05-123-07852					
Permanent Datum		GL					
Log Measured From		KB: 10'					
Drilling Measured From		KB					
SHL: 1594' FSL 1282' FWL NW/SW		Elevation 4901'					
LAT: 40.19420 LONG: -104.95600		KB. 4911					
SEC 25 TWP 3N RGE 68W		D.F. 4910					
		G.L. 4901					
Date	11-6-2014						
Run Number	ONE						
Depth Driller	7805'						
Depth Logger	178'						
Bottom Logged Interval	175'						
Top Log Interval	Surface						
Open Hole Size	7 7/8						
Type Fluid	WATER						
Density / Viscosity	1.0						
Max. Recorded Temp.	70						
Estimated Cement Top	46'						
Time Well Ready	NA						
Time Logger on Bottom	NA						
Equipment Number	7770						
Location	GREELEY						
Recorded By	A.STEERMAN						
Witnessed By	K.NALL						
Borehole Record		Tubing Record					
Run Number	Bit	From	To	Size	Weight	From	To
Casing Record	Size		Wgt/Ft		Top		Bottom
Surface String	8 5/8		24#		0		218'
Prot. String							
Production String	4 1/2		11.6#/10.5#		0		7804'
Liner							

<<< Fold Here >>>

All interpretations are opinions based on inferences from electrical or other measurements and we cannot and do not guarantee the accuracy or correctness of any interpretation, and we shall not, except in the case of gross or willful negligence on our part, be liable or responsible for any loss, costs, damages, or expenses incurred or sustained by anyone resulting from any interpretation made by any of our officers, agents or employees. These interpretations are also subject to our general terms and conditions set out in our current Price Schedule.

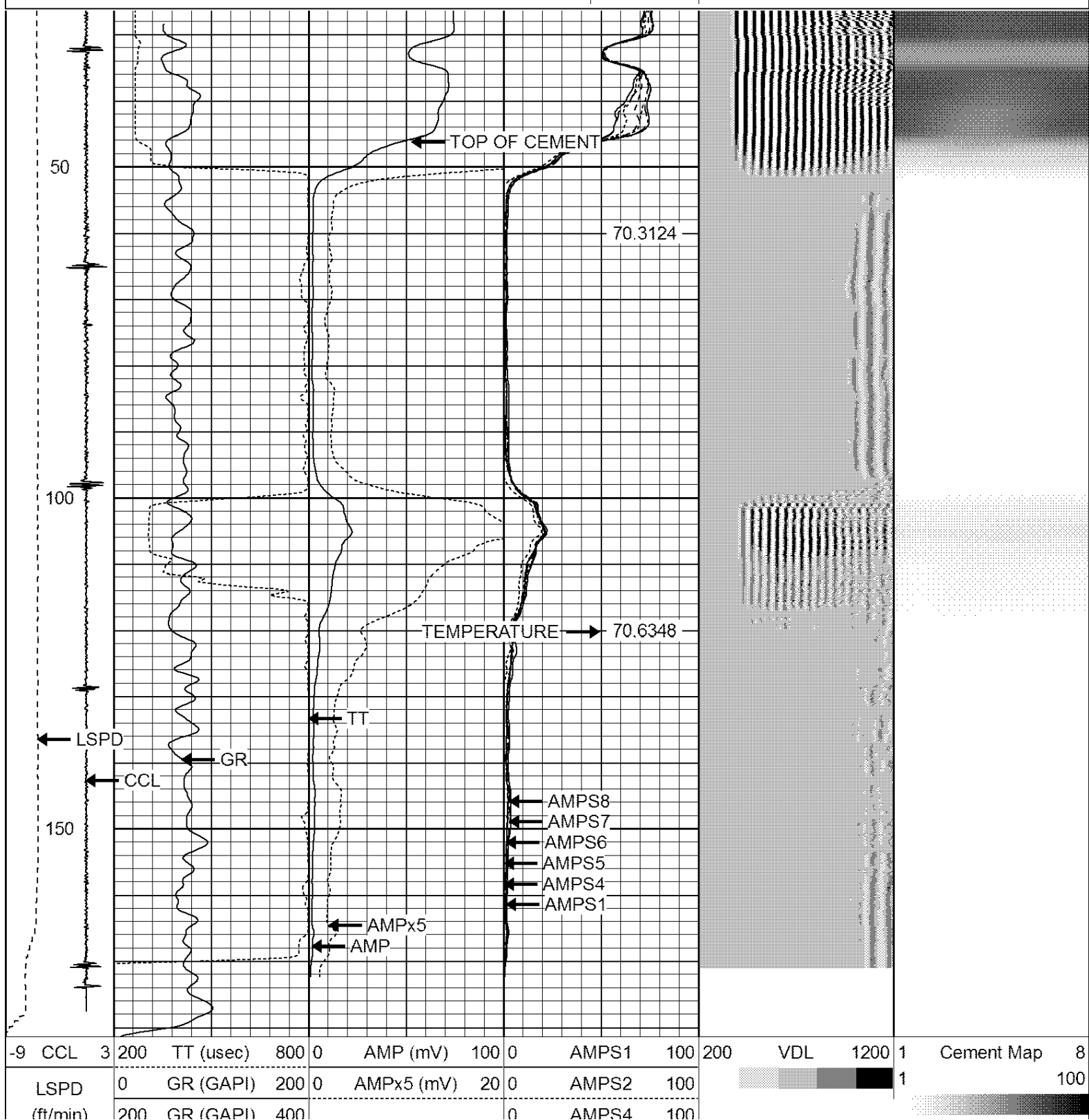
Comments

NOT CORROLATED  
1000 PSI  
RAN CBL TO VERIFY CEMENT.

THANK YOU FOR USING WARRIOR ENERGY!

Sensor	Offset (ft)	Schematic	Description	Len (ft)	OD (in)	Wt (lb)

				CENT #2 -Probe (PTS_MONO)	2.75	2.75	35.00
HEADVOLT	16.00						
IntTemp	14.58						



0	-250		0	AMPS5	100
			0	AMPS6	100
			0	AMPS7	100
			0	AMPS8	100
				IntTemp	
				(degF)	

			Company	Kerr McGee Oil & Gas
			Well	RADEMACHER EDWARD UNIT #1
			Field	Wattenberg
			County	Weld
			State	CO