

MULTI-WELL PAD DIRECTIONAL LAYOUT

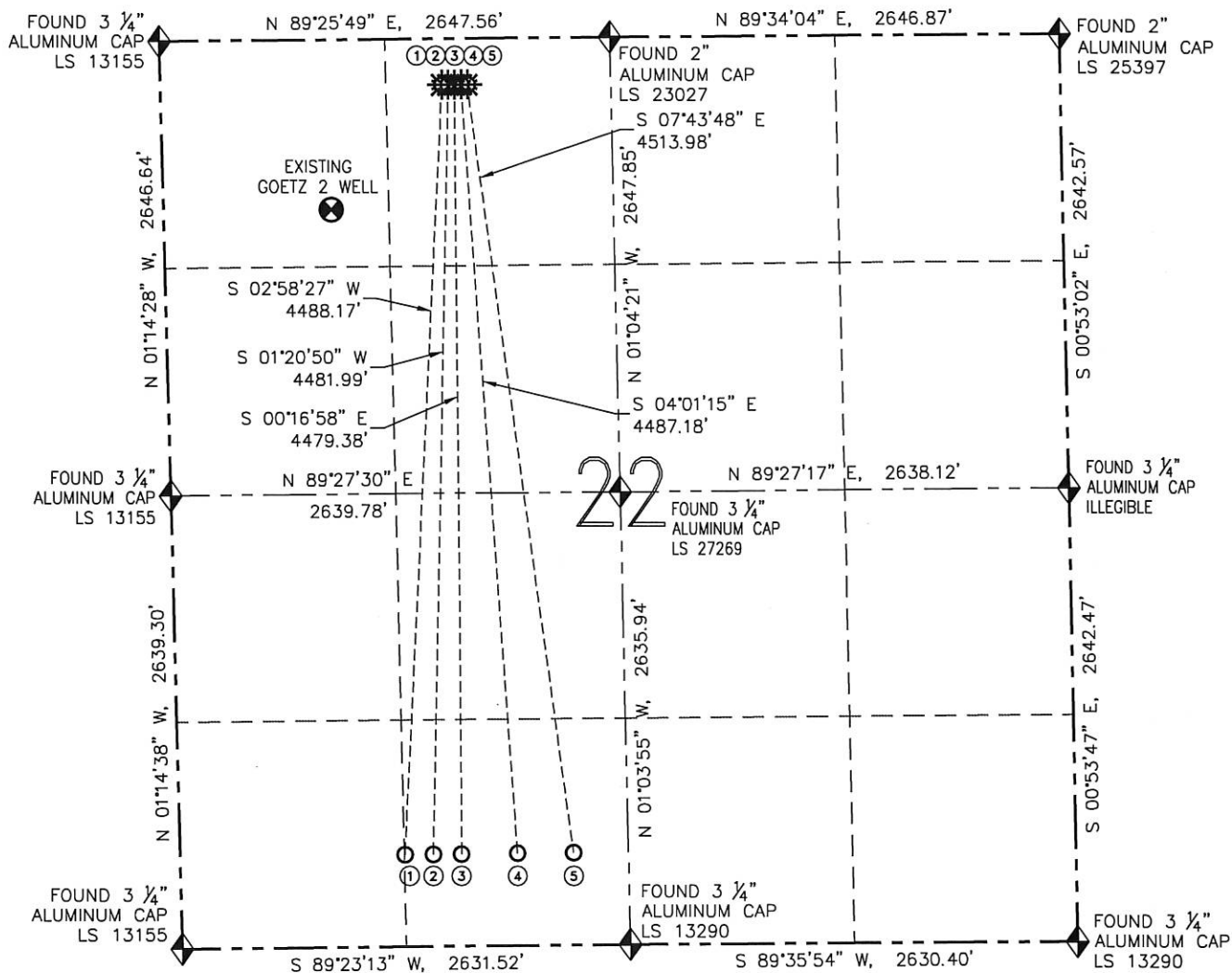
MINNE Y22-77HN, 77HC, 77-1HN, 76HN & 76-1HN

THIS MAP DOES NOT REPRESENT A BOUNDARY SURVEY

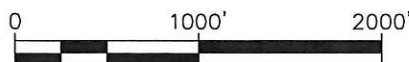
SECTION: 22

TOWNSHIP: 2 NORTH

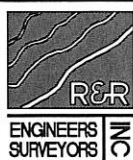
RANGE: 64 WEST



NO.	WELL NAME	FOOTAGES		LATITUDE	LONGITUDE	¼-¼
1	MINNE Y22-77HN	BHL: 535' FSL	BHL: 1320' FWL	BHL: N 40.11818'	BHL: W 104.54210'	BHL: SE SW
2	MINNE Y22-77HC	BHL: 535' FSL	BHL: 1485' FWL	BHL: N 40.11818'	BHL: W 104.54151'	BHL: SE SW
3	MINNE Y22-77-1HN	BHL: 535' FSL	BHL: 1650' FWL	BHL: N 40.11818'	BHL: W 104.54092'	BHL: SE SW
4	MINNE Y22-76HN	BHL: 535' FSL	BHL: 1980' FWL	BHL: N 40.11818'	BHL: W 104.53974'	BHL: SE SW
5	MINNE Y22-76-1HN	BHL: 535' FSL	BHL: 2310' FWL	BHL: N 40.11818'	BHL: W 104.53856'	BHL: SE SW



SCALE: 1" = 1000'



FIELD DATE: 10/02/14
 PLOT DATE: 10/22/14
 DRAWN BY: CJD
 JOB NO.: NE12322
 SHEET NO.: 8 of 11

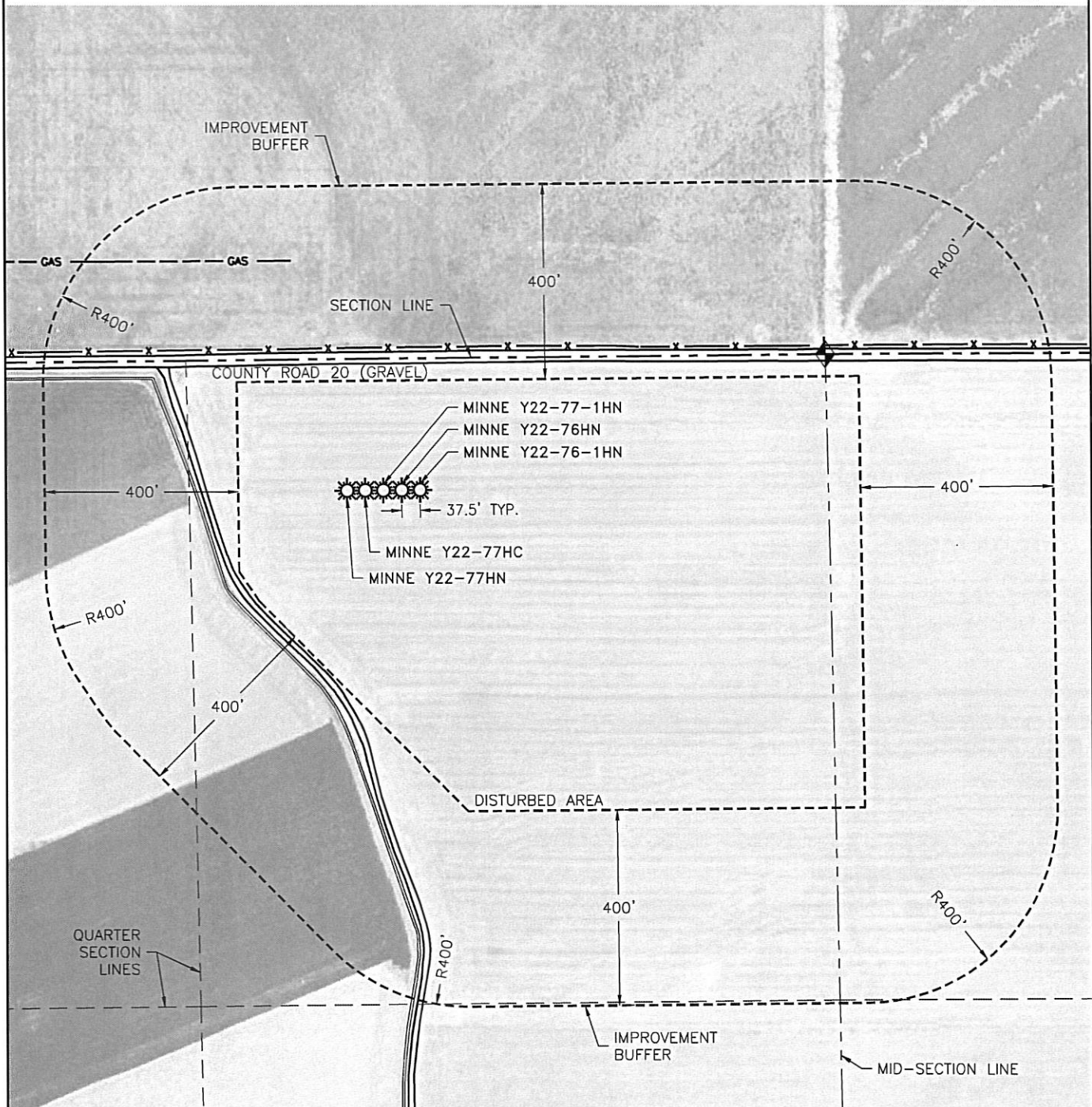
LEGEND

- PROPOSED WELL
- EXISTING WELL
- BOTTOM HOLE
- FOUND MONUMENT

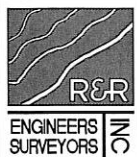
MULTI-WELL PAD LOCATION DRAWING

MINNE Y22-77HN, 77HC, 77-1HN, 76HN & 76-1HN
THIS MAP DOES NOT REPRESENT A BOUNDARY SURVEY

SECTION: 22
TOWNSHIP: 2 NORTH
RANGE: 64 WEST



SCALE: 1" = 300'



FIELD DATE: 10/02/14
PLOT DATE: 10/22/14
DRAWN BY: CJD
JOB NO.: NE12322
SHEET NO.: 9 of 11

LEGEND

- PROPOSED WELL
- FOUND MONUMENT