



# Kerr-McGee Oil & Gas Onshore LP

A subsidiary of Anadarko Petroleum Corporation

1099 18<sup>th</sup> Street  
Denver, CO 80202  
720-929-6000

November 25, 2014

Department of Natural Resources  
Oil and Gas Conservation Commission  
The Chancery Building  
1120 Lincoln St., Suite 801  
Denver, CO 80203

Re: **30 Day Certification Letter - 318A.e**  
GRISWOLD 4-11HZ  
Township 1 North, Range 66 West, Section 11: SE/4SW/4  
Unit Acreage: 200 acres  
Unit Spacing: 01N-66W-Sec 11 W/2W/2  
01N-66W-Sec 14 NW/4NW/4  
Weld County, Colorado

Ladies/Gentlemen:

Kerr McGee Oil and Gas Onshore LP ("KMG") hereby certifies to the Director that KMG owns one-hundred percent (100%) of the mineral rights in the proposed spacing unit. Therefore, KMG respectfully requests the Director to approve the boundary well.

If you have any questions or issues regarding this permit, please contact Cheryl Light at (720) 929-6461.

Very truly yours,

**KERR-McGEE OIL AND GAS ONSHORE LP**

A handwritten signature in blue ink that reads 'RPowers'.

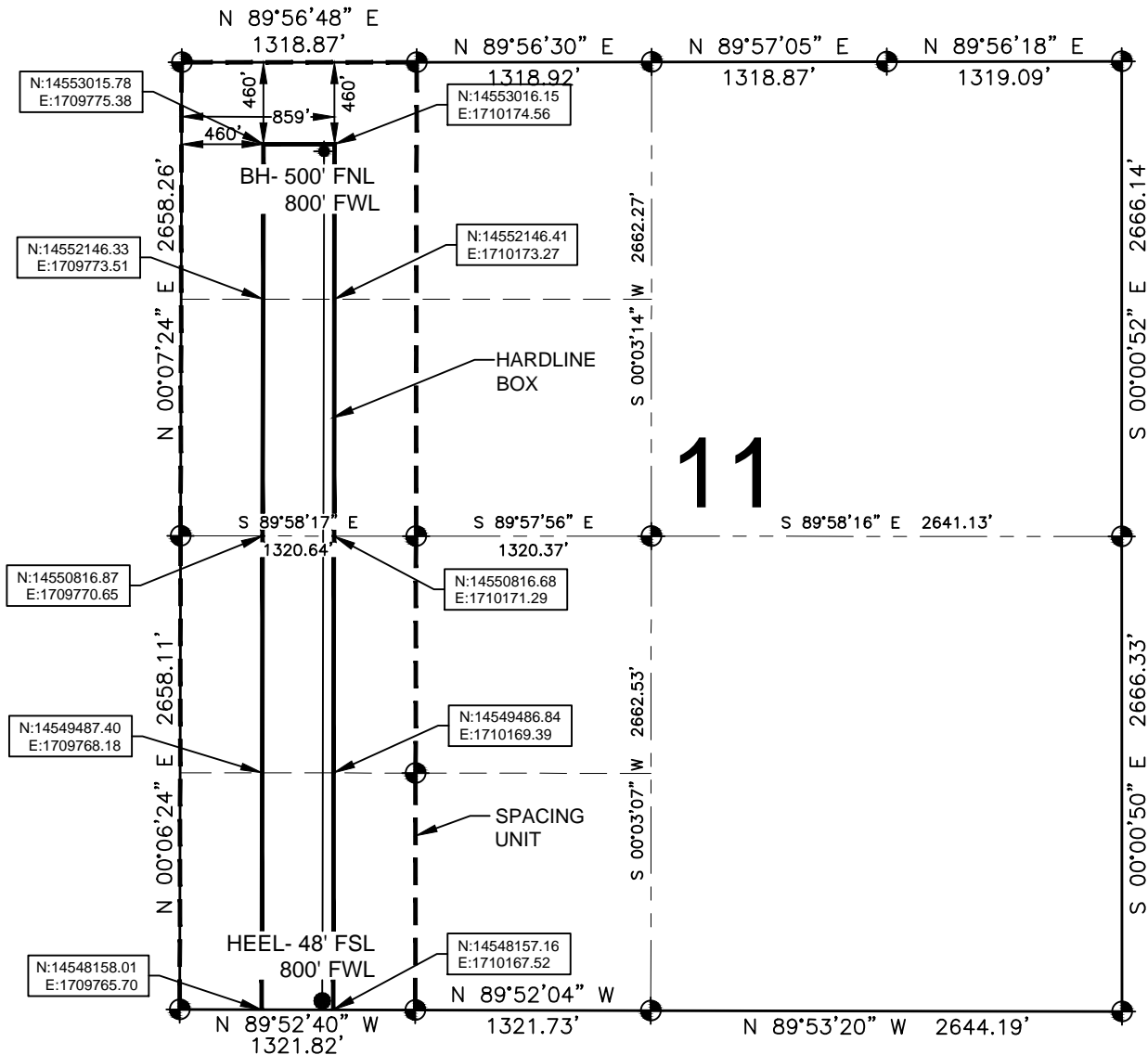
**Ronett Powers**  
**Regulatory Analyst II**

Enclosure



# HARDLINE EXHIBIT: GRISWOLD 4-11HZ

SECTION 11, TOWNSHIP 1 NORTH, RANGE 66 WEST, 6TH P.M.



## LEGEND

- = EXISTING MONUMENT
- = PROPOSED HEEL
- ◆ = BOTTOM HOLE
- BH = BOTTOM HOLE

## HEEL LOCATION

NAD83  
LATITUDE= 40.058703°  
LONGITUDE= 104.750942°  
  
LATITUDE= 40°03'31.332"  
LONGITUDE= 104°45'03.392"

## QRT/QRT SECTIONS WITHIN PATH OF THE HARDLINE

NWNW, SEC. 11  
SWNW, SEC. 11  
NWSW, SEC. 11  
SWSW, SEC. 11

## BOTTOM HOLE LOCATION

NAD83  
LATITUDE= 40.071799°  
LONGITUDE= 104.750862°  
  
LATITUDE= 40°04'18.478"  
LONGITUDE= 104°45'03.102"

## AVAILABLE FOOTAGE

5724'

## NOTES:

- THIS DOCUMENT IS NOT A LAND SURVEY PLAT OR IMPROVEMENT SURVEY PLAT. THIS DOCUMENT DOES NOT REFLECT A FIELD SURVEY. SECTION BREAKDOWN, MONUMENTATION AND HORIZONTAL POSITIONS SHOWN ARE BASED ON THE HEEL AND BOTTOM HOLE LOCATION PROVIDED BY ANADARKO PETROLEUM CORPORATION

PREPARED BY:



SHEET 1 OF 2

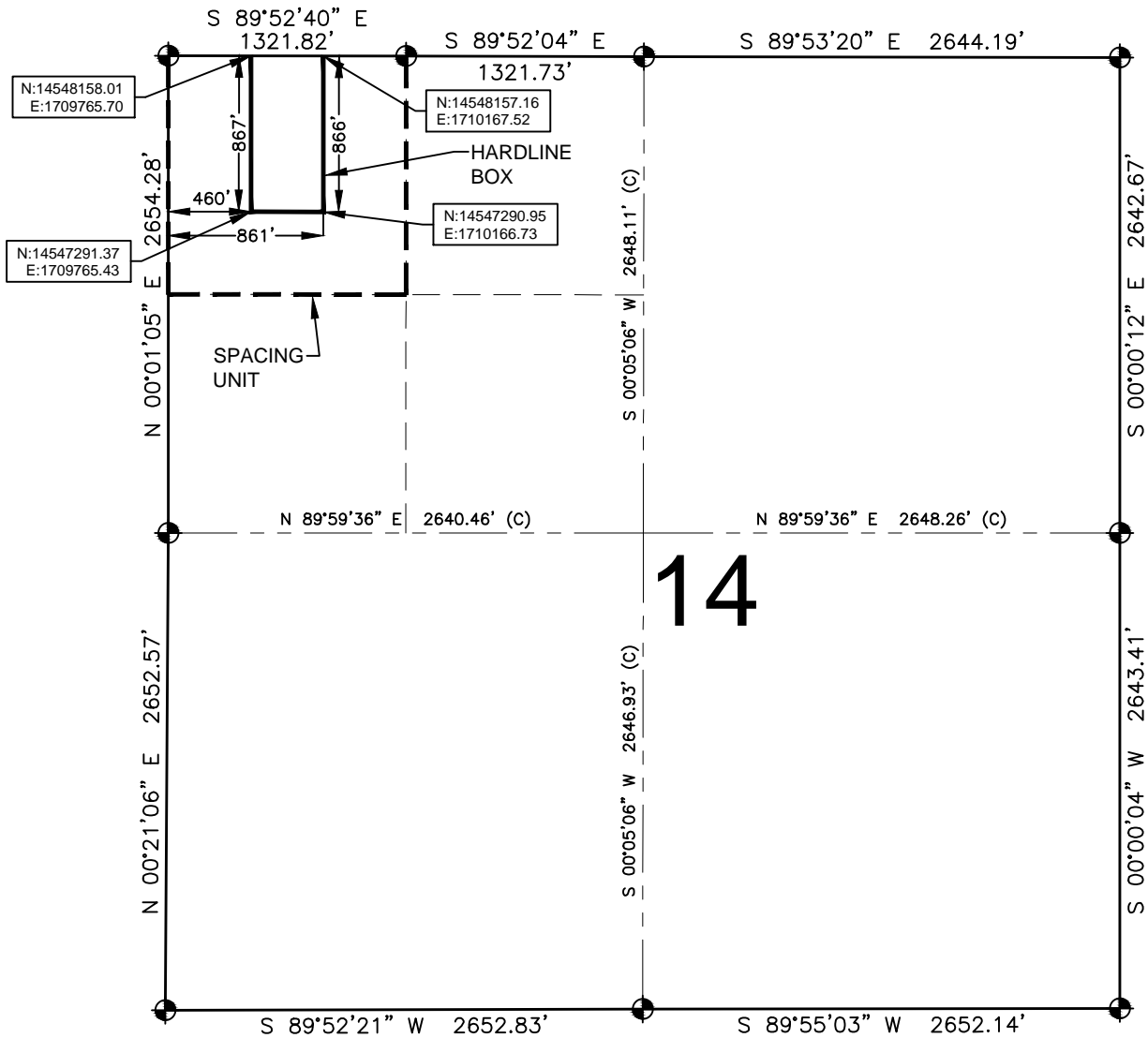
DRAWING DATE:	HEEL LOCATION:
11-16-14	SW 1/4, SW 1/4,
BY: SMF	SEC. 11, T1N, R66W, 6TH P.M.
CHECKED: TJN	WELD COUNTY, COLORADO






0 500 1000  
SCALE: 1"=1000'



SECTION 14, TOWNSHIP 1 NORTH, RANGE 66 WEST, 6TH P.M.



## LEGEND

-  = EXISTING MONUMENT      = BOTTOM HOLE  
 = PROPOSED HEEL     BH = BOTTOM HOLE

### QRT/QRT SECTIONS WITHIN PATH OF THE HARDLINE

NWNW, SEC. 14

NOTES:

1. THIS DOCUMENT IS NOT A LAND SURVEY PLAT OR IMPROVEMENT SURVEY PLAT. THIS DOCUMENT DOES NOT REFLECT A FIELD SURVEY. SECTION BREAKDOWN, MONUMENTATION AND HORIZONTAL POSITIONS SHOWN ARE BASED ON THE HEEL AND BOTTOM HOLE LOCATION PROVIDED BY ANADARKO PETROLEUM CORPORATION

DRAWING DATE: 11-16-14		HEEL LOCATION: SW 1/4, SW 1/4, SEC. 11, T1N, R66W, 6TH P.M.	
BY: SMF	CHECKED: TJN	WELD COUNTY, COLORADO	



0 500 1000

SCALE: 1"=1000'