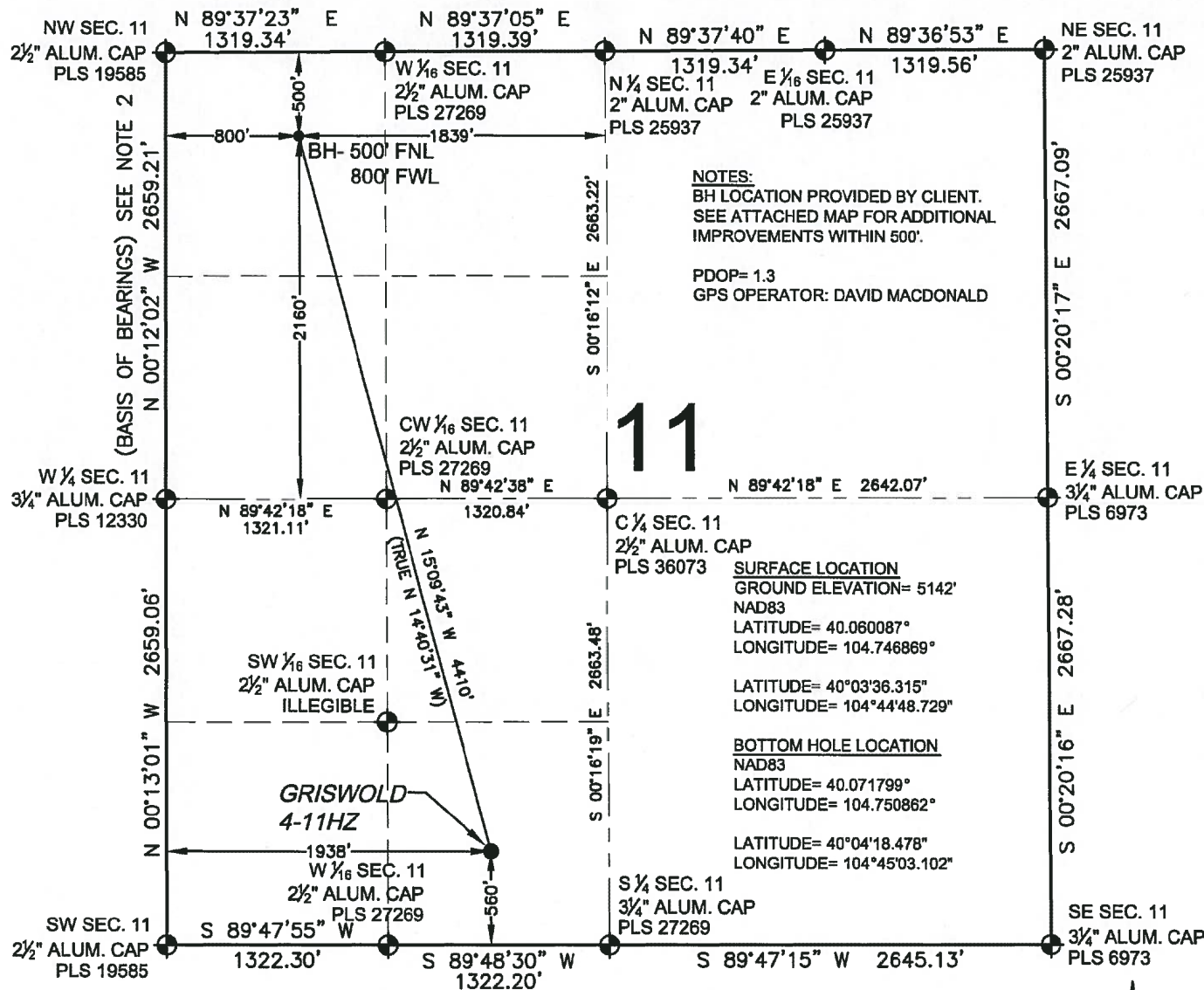


# WELL LOCATION CERTIFICATE: GRISWOLD 4-11HZ

SECTION 11, TOWNSHIP 1 NORTH, RANGE 66 WEST, 6TH P.M.



NOTES:  
BH LOCATION PROVIDED BY CLIENT.  
SEE ATTACHED MAP FOR ADDITIONAL  
IMPROVEMENTS WITHIN 500'.

PDOP= 1.3  
GPS OPERATOR: DAVID MACDONALD

**SURFACE LOCATION**  
GROUND ELEVATION= 5142'  
NAD83  
LATITUDE= 40.060087°  
LONGITUDE= 104.746869°

LATITUDE= 40°03'36.315"  
LONGITUDE= 104°44'48.729"

**BOTTOM HOLE LOCATION**  
NAD83  
LATITUDE= 40.071799°  
LONGITUDE= 104.750862°

LATITUDE= 40°04'18.478"  
LONGITUDE= 104°45'03.102"

WELL GRISWOLD 4-11HZ TO BE LOCATED 560' FSL AND 1938' FWL

## LEGEND

- ⊕ = EXISTING MONUMENT
- ⬢ = PROPOSED WELL
- ⬢ = BOTTOM HOLE
- ⬢ = EXISTING WELL
- BH = BOTTOM HOLE

## NOTES:

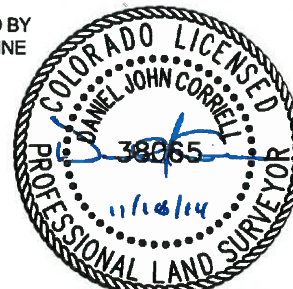
- THIS FIELD SURVEY CONFORMS TO THE MINIMUM STANDARDS SET BY THE C.O.G.C.C., RULE NO. 215
- BEARINGS AND DISTANCE SHOWN HEREON ARE GRID AND BASED ON THE COLORADO STATE PLANE COORDINATE SYSTEM, NAD 83/2011 BETWEEN MONUMENTS AS LABELED HEREON AND ELEVATIONS SHOWN ARE NAVD 88, AS DERIVED BY GPS OBSERVATIONS.
- GRID DISTANCES ARE SHOWN, AS MEASURED IN THE FIELD, WITH TIES TO WELLS MEASURED PERPENDICULAR TO SECTION LINES.

I, DANIEL JOHN CORRIELL, A LICENSED PROFESSIONAL LAND SURVEYOR IN THE STATE OF COLORADO DO HEREBY CERTIFY TO **KERR-MCGEE OIL & GAS ONSHORE LP**, THAT THE SURVEY AND WELL LOCATION CERTIFICATE SHOWN HEREON WERE DONE BY ME OR UNDER MY DIRECT SUPERVISION AND THAT THE DRAWING SHOWN HEREON ACCURATELY DEPICTS THE PROPOSED LOCATION OF THE WELL. THIS CERTIFICATE DOES NOT REPRESENT A LAND SURVEY PLAT OR IMPROVEMENT SURVEY PLAT AS DEFINED BY C.R.S. 38-51-102 AND CANNOT BE RELIED UPON TO DETERMINE OWNERSHIP.

DANIEL JOHN CORRIELL, PLS 38065  
COLORADO LICENSED PROFESSIONAL LAND SURVEYOR  
FOR AND ON BEHALF OF P.F.S., LLC

0 500 1000

SCALE: 1"=1000'

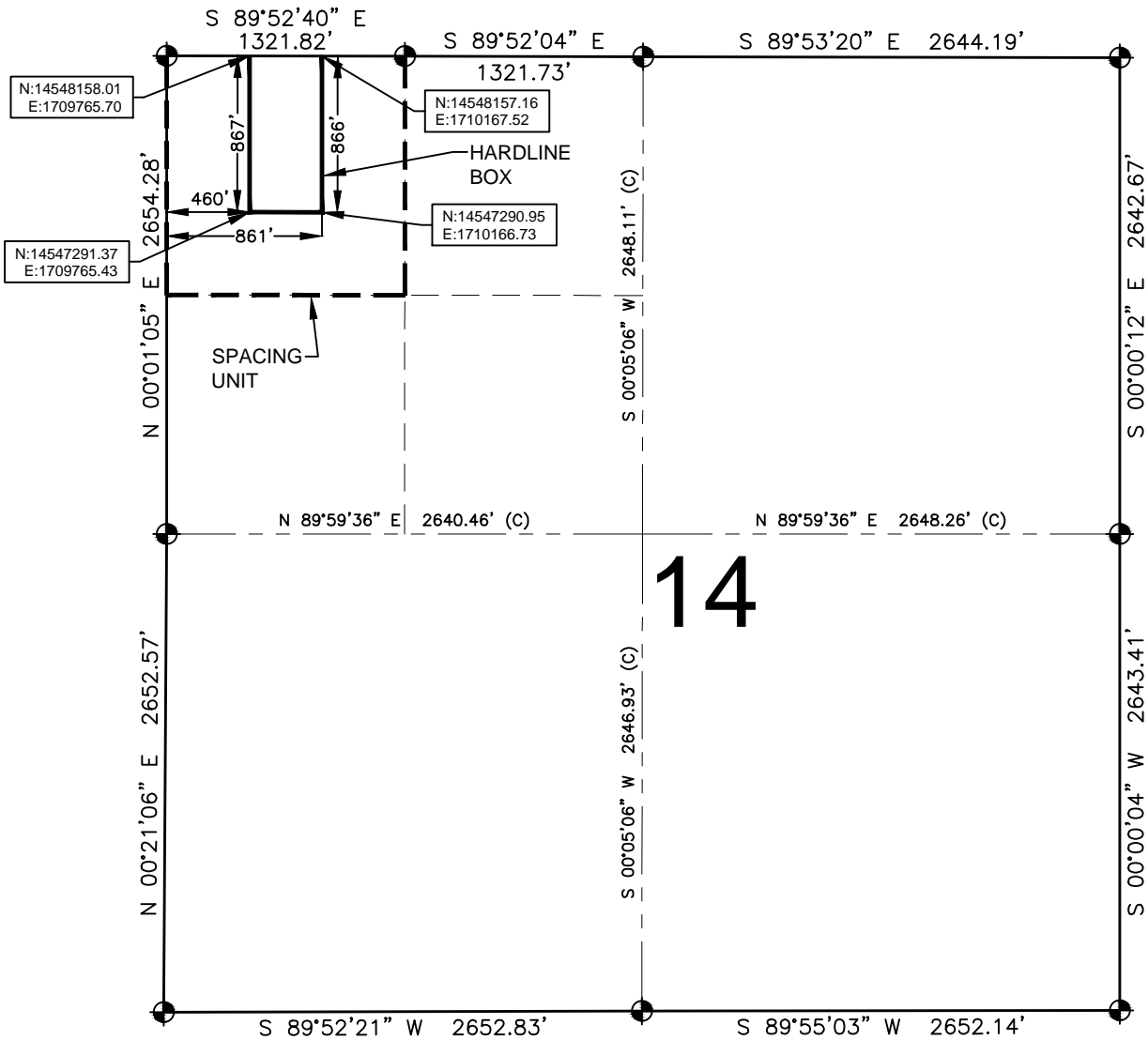


PREPARED BY: FIELD DATE: 09-30-13 SURFACE LOCATION: SE 1/4, SW 1/4, SEC. 11, T1N, R66W, 6TH P.M.  
DRAWING DATE: 11-16-14 BY: SMF CHECKED: TJN  
WELD COUNTY, COLORADO

NOTICE: ACCORDING TO COLORADO LAW YOU MUST COMMENCE ANY LEGAL ACTION BASED UPON ANY DEFECT IN THIS SURVEY WITHIN THREE YEARS AFTER YOU FIRST DISCOVER SUCH DEFECT. IN NO EVENT MAY ANY ACTION BASED UPON ANY DEFECT IN THIS SURVEY BE COMMENCED MORE THAN TEN YEARS FROM THIS SAID DATE OF THIS CERTIFICATION SHOWN HEREON.

# GRISWOLD 4-11HZ

SECTION 14, TOWNSHIP 1 NORTH, RANGE 66 WEST, 6TH P.M.



## LEGEND

- = EXISTING MONUMENT
- = PROPOSED HEEL
- ⬮ = BOTTOM HOLE
- BH = BOTTOM HOLE

QRT/QRT SECTIONS WITHIN PATH OF THE HARDLINE

NWNW, SEC. 14

## NOTES:

- THIS DOCUMENT IS NOT A LAND SURVEY PLAT OR IMPROVEMENT SURVEY PLAT. THIS DOCUMENT DOES NOT REFLECT A FIELD SURVEY. SECTION BREAKDOWN, MONUMENTATION AND HORIZONTAL POSITIONS SHOWN ARE BASED ON THE HEEL AND BOTTOM HOLE LOCATION PROVIDED BY ANADARKO PETROLEUM CORPORATION

