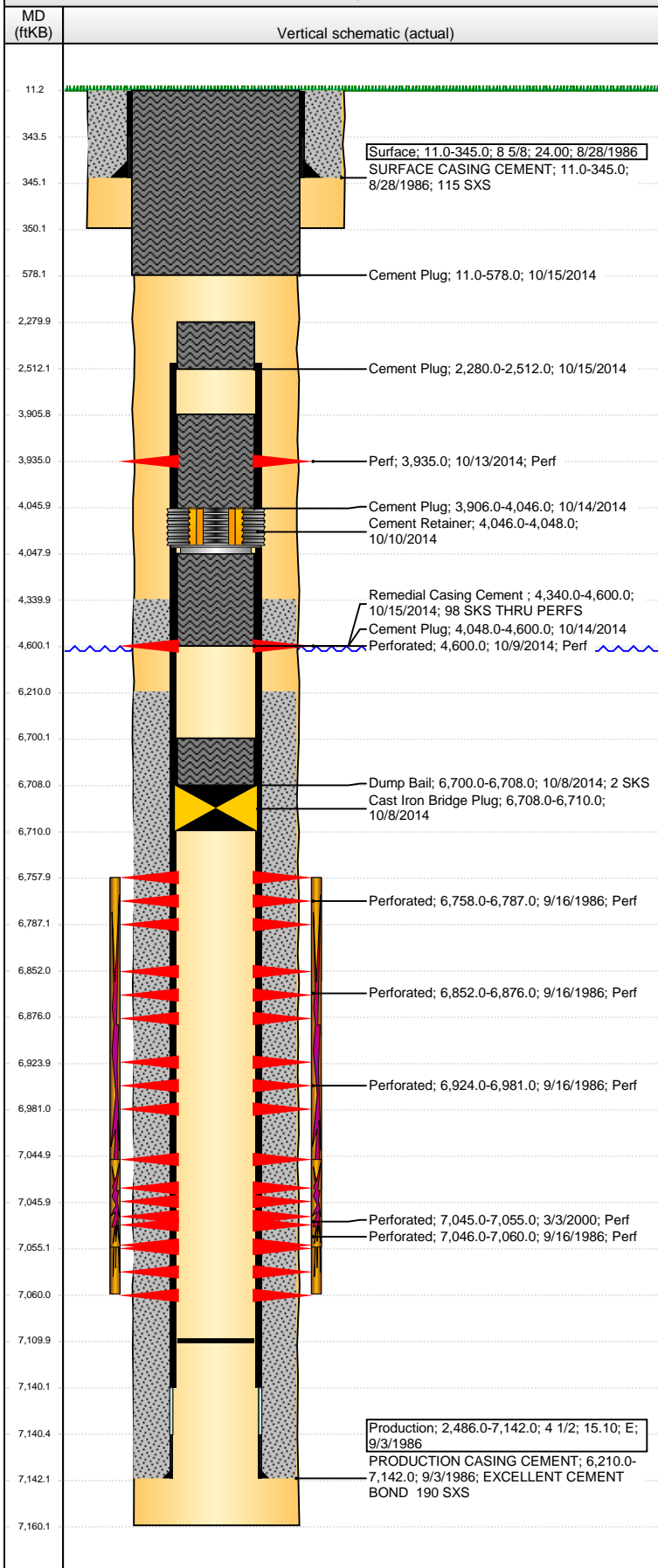


**Well Name: MUIRHEAD 01-03**

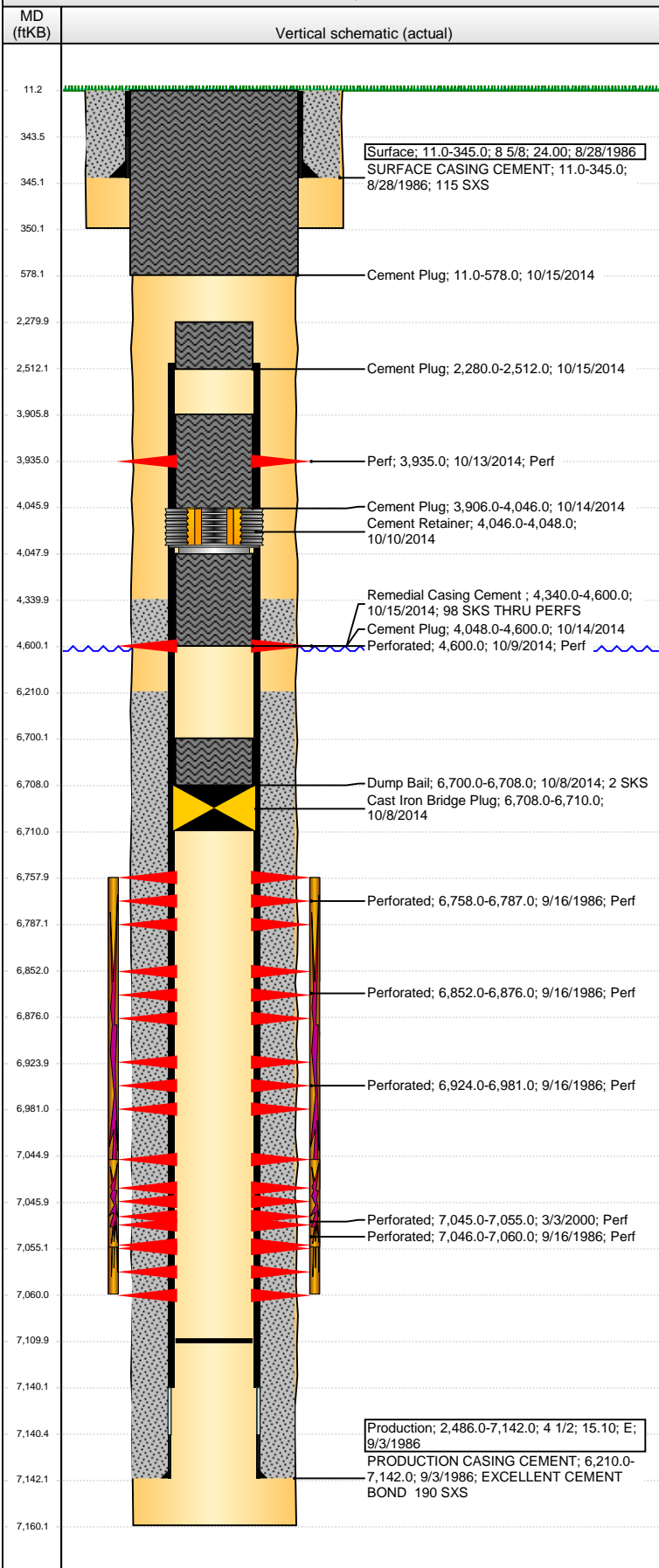
VERTICAL - ORIGINAL HOLE, 11/25/2014 4:39:20 PM



Well Header							
API 05-123-13128		Business Unit DJ BASIN		District 15		Well Config VERTICAL	
Original KB Elevation (ft) 4,748.00		KB - GL / MSL (ftKB) 11.00		Spud Date 8/27/1986		P & A Date 10/15/2014	
Comment							
Directions To Well							
Congressional Location							
Quarter 1	Quarter 2 SW	Quarter 3 NW	Quarter 4 SW	Section 1	Township 4 N	Twntshp N...	Range 65 W
Bottom Hole Location							
North-South Distance (ft)		From N or S Line		East-West Distance (ft)		From E or W Line	
Plug Back Total Depths							
Date	Depth (ftKB)	Method		Com			
9/4/1986	7,111.0	TAG		TAG			
9/8/1986	7,033.0	CASED HOLE LOG		DEPTH LOGGER ON CBL			
5/10/2007	7,110.0	TAG		BAIL TO LAND TUBING			
Wellbore Sections							
Section Des		Size (in)	Act Top, MD (ftKB)		Act Btm, MD (ftKB)		
SURFACE		12 1/4	11.0		350.0		
PRODUCTION		7 7/8	350.0		7,160.0		
Zone Statuses							
Zone Name	Status Date	Status		Job			
CODELL	10/13/1986	PR		DRILLING/COMPLETION - ORIGINAL, 8/27/1986 00:00			
CODELL	3/10/2000	PR		RE-FRAC, 3/1/2000 00:00			
CODELL	10/8/2014	P&A		ABANDON WELL, 10/7/2014 06:00			
NIOBRARA	10/13/1986	PR		DRILLING/COMPLETION - ORIGINAL, 8/27/1986 00:00			
NIOBRARA	10/8/2014	P&A		ABANDON WELL, 10/7/2014 06:00			
Casing Strings							
Surface, 345.0ftKB							
Casing Description	Run Date	OD (in)	Wt/Len (L...)	Grade	Top, MD (ft...)	MD (ftKB)	
Surface	8/28/1986	8 5/8	24.00		11.0	345.0	
Production, 7,142.0ftKB							
Casing Description	Run Date	OD (in)	Wt/Len (L...)	Grade	Top, MD (ft...)	MD (ftKB)	
Production	9/3/1986	4 1/2	15.10	E	11.0	7,142.0	
Cement							
Description	Top Depth (ftKB)		Bottom Depth (ftKB)				
SURFACE CASING CEMENT	11.0		345.0				
Description	Top Depth (ftKB)		Bottom Depth (ftKB)				
PRODUCTION CASING CEMENT	6,210.0		7,142.0				
Description	Top Depth (ftKB)		Bottom Depth (ftKB)				
Dump Bail	6,700.0		6,708.0				
Description	Top Depth (ftKB)		Bottom Depth (ftKB)				
Cement Plug	4,048.0		4,600.0				
Description	Top Depth (ftKB)		Bottom Depth (ftKB)				
Cement Plug	3,906.0		4,046.0				
Description	Top Depth (ftKB)		Bottom Depth (ftKB)				
Cement Plug	2,280.0		2,512.0				
Description	Top Depth (ftKB)		Bottom Depth (ftKB)				
Cement Plug	11.0		578.0				
Description	Top Depth (ftKB)		Bottom Depth (ftKB)				
Remedial Casing Cement	4,340.0		4,600.0				
Tubing Components							
Item Des	OD (in)	Wt (lb/ft)	Grade	Jts	Len (ft)	Btm (ftKB)	Btm (TVD) (ftKB)
Perforation Data							
Zone	Bnch/St g	Entered Shot Total	Top (ftKB)	Btm (ftKB)	Date		
CODELL, ORIGINAL HOLE		4	3,935.00	3,935.00	10/13/2014		
CODELL, ORIGINAL HOLE		2	4,600.00	4,600.00	10/9/2014		
NIOBRARA, ORIGINAL HOLE	A	3	6,758.00	6,787.00	9/16/1986		
NIOBRARA, ORIGINAL HOLE	B	5	6,852.00	6,876.00	9/16/1986		
NIOBRARA, ORIGINAL HOLE	C	4	6,924.00	6,981.00	9/16/1986		
CODELL, ORIGINAL HOLE		40	7,045.00	7,055.00	3/3/2000		
CODELL, ORIGINAL HOLE		7	7,046.00	7,060.00	9/16/1986		

**Well Name: MUIRHEAD 01-03**

VERTICAL - ORIGINAL HOLE, 11/25/2014 4:39:22 PM



### Stimulations & Treatments

Date	Zone	Primary Job Type
9/13/1986	NIOBRARA-CODELL, ORIGINAL HOLE	DRILLING/COMPLETION - ORIGINAL
Technical Result	Tech Result Details	Tech Result Note

Comment

Date	Zone	Primary Job Type
9/18/1986	NIOBRARA-CODELL, ORIGINAL HOLE	DRILLING/COMPLETION - ORIGINAL
Technical Result	Tech Result Details	Tech Result Note
Failure	Screen-Out	

Comment  
LIMITED ENTRY FRAC -- SCREENED OUT

Date	Zone	Primary Job Type
3/7/2000	CODELL, ORIGINAL HOLE	RE-FRAC
Technical Result	Tech Result Details	Tech Result Note

Comment

### Other In Hole

Run Date	Des	OD (in)	Top (ftKB)	Btm (ftKB)
10/8/2014	Cast Iron Bridge Plug	4	6,708.0	6,710.0
10/10/2014	Cement Retainer	4	4,046.0	4,048.0

### Logs

Date	Type	Top, MD (ftKB)	Btm, MD (ftKB)
9/3/1986	COMPENSATED DENSITY	1,560.0	7,182.0
9/3/1986	INDUCTION	300.0	7,173.0
9/8/1986	CEMENT BOND	6,550.0	7,030.0