



# Kerr-McGee Oil & Gas Onshore LP

A subsidiary of Anadarko Petroleum Corporation

1099 18<sup>th</sup> Street  
Denver, CO 80202  
720-929-6000

November 25, 2014

Department of Natural Resources  
Oil and Gas Conservation Commission  
The Chancery Building  
1120 Lincoln St., Suite 801  
Denver, CO 80203

Re: **30 Day Certification Letter - 318A.e**  
GRISWOLD 3N-11HZ  
Township 1 North, Range 66 West, Section 11: SE/4SW/4  
Unit Acreage: 240 acres  
Unit Spacing: 01N-66W-02 SE/4SW/4  
01N-66W-11 E/2W/2  
01N-66W-14 NE/4NW/4  
Weld County, Colorado

Ladies/Gentlemen:

Kerr-McGee Oil and Gas Onshore LP ("KMG") hereby certifies to the Director that a thirty (30) day notice has been given by certified mail to all owners in the proposed wellbore spacing unit. We have not received any objections to such well location, proposed spacing unit, or additional producing formation. KMG hereby requests the Director to approve the boundary well.

If you have any questions or issues regarding this permit, please contact Cheryl Light at (720) 929-6461.

Very truly yours,

**Kerr-McGee Oil and Gas Onshore LP**

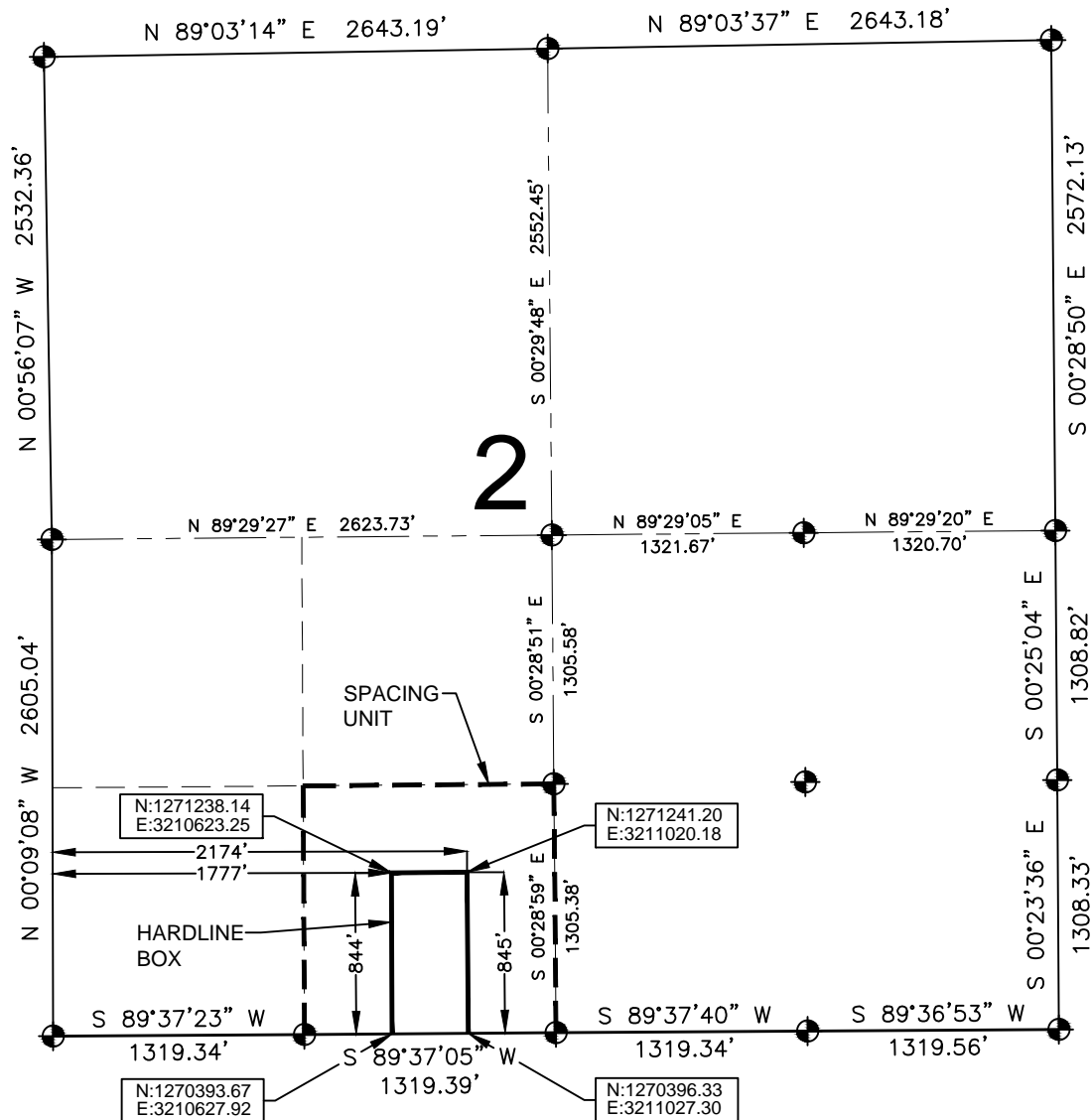
A handwritten signature in blue ink that reads 'RPowers'.

**Ronett Powers**  
**Regulatory Analyst II**

Enclosure

# HARDLINE EXHIBIT: GRISWOLD 3N-11HZ

SECTION 2, TOWNSHIP 1 NORTH, RANGE 66 WEST, 6TH P.M.



## LEGEND

- = EXISTING MONUMENT    ● = BOTTOM HOLE  
● = PROPOSED HEEL    BH = BOTTOM HOLE

## HEEL LOCATION

NAD83  
LATITUDE= 40.058687°  
LONGITUDE= 104.746699°

## QRT/QRT SECTIONS WITHIN PATH OF THE HARDLINE

SESW, SEC. 2

LATITUDE= 40°03'31.272"  
LONGITUDE= 104°44'48.117"

## BOTTOM HOLE LOCATION

NAD83  
LATITUDE= 40.072892°  
LONGITUDE= 104.746602°

## AVAILABLE FOOTAGE

7034'

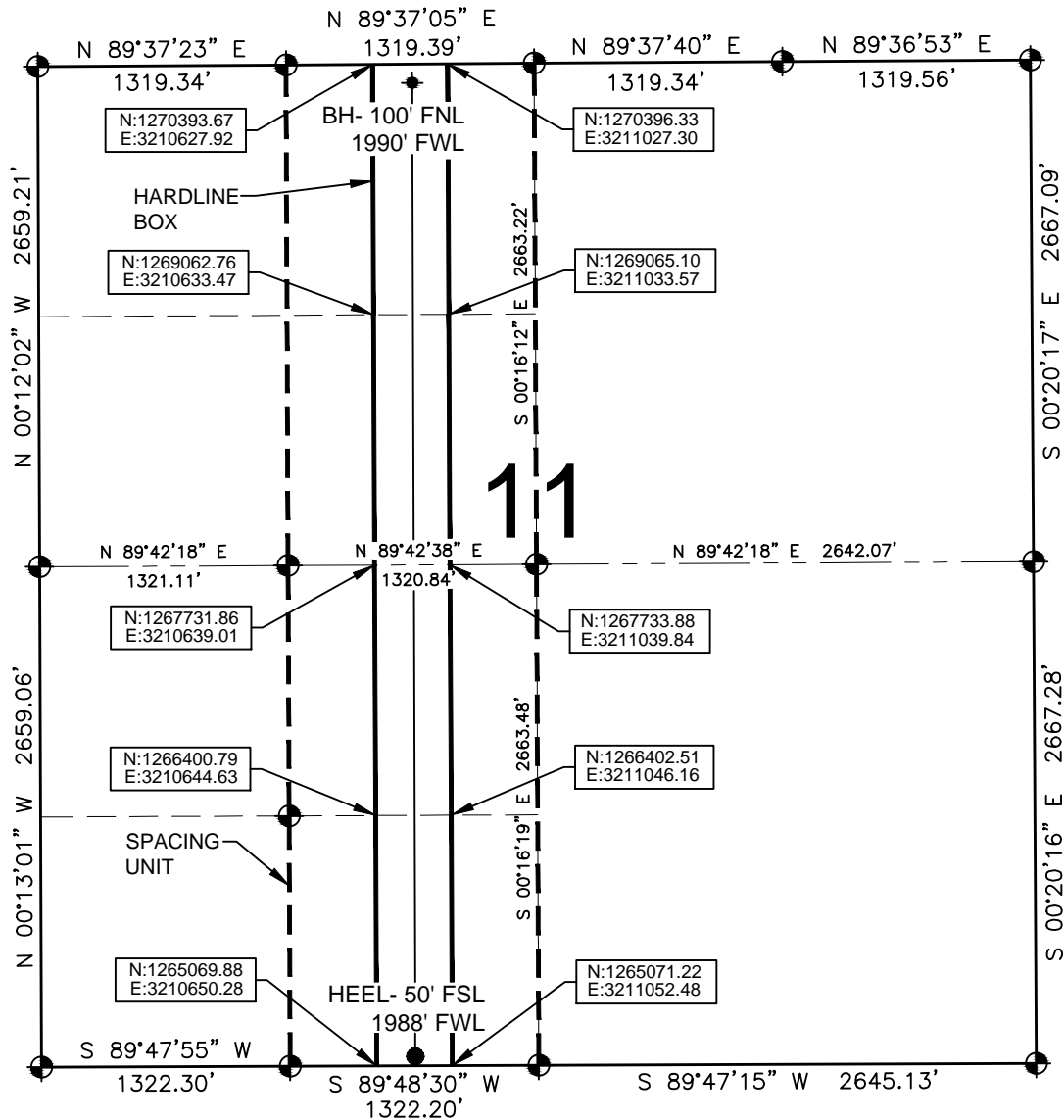
## NOTES:

- THIS DOCUMENT IS NOT A LAND SURVEY PLAT OR IMPROVEMENT SURVEY PLAT. THIS DOCUMENT DOES NOT REFLECT A FIELD SURVEY. SECTION BREAKDOWN, MONUMENTATION AND HORIZONTAL POSITIONS SHOWN ARE BASED ON THE HEEL AND BOTTOM HOLE LOCATION PROVIDED BY ANADARKO PETROLEUM CORPORATION



# HARDLINE EXHIBIT: GRISWOLD 3N-11HZ

SECTION 11, TOWNSHIP 1 NORTH, RANGE 66 WEST, 6TH P.M.



## LEGEND

- = EXISTING MONUMENT
- ⊙ = BOTTOM HOLE
- = PROPOSED HEEL
- BH = BOTTOM HOLE

## QRT/QRT SECTIONS WITHIN PATH OF THE HARDLINE

SESW, SEC. 11  
 NESW, SEC. 11  
 SENW, SEC. 11  
 NENW, SEC. 11

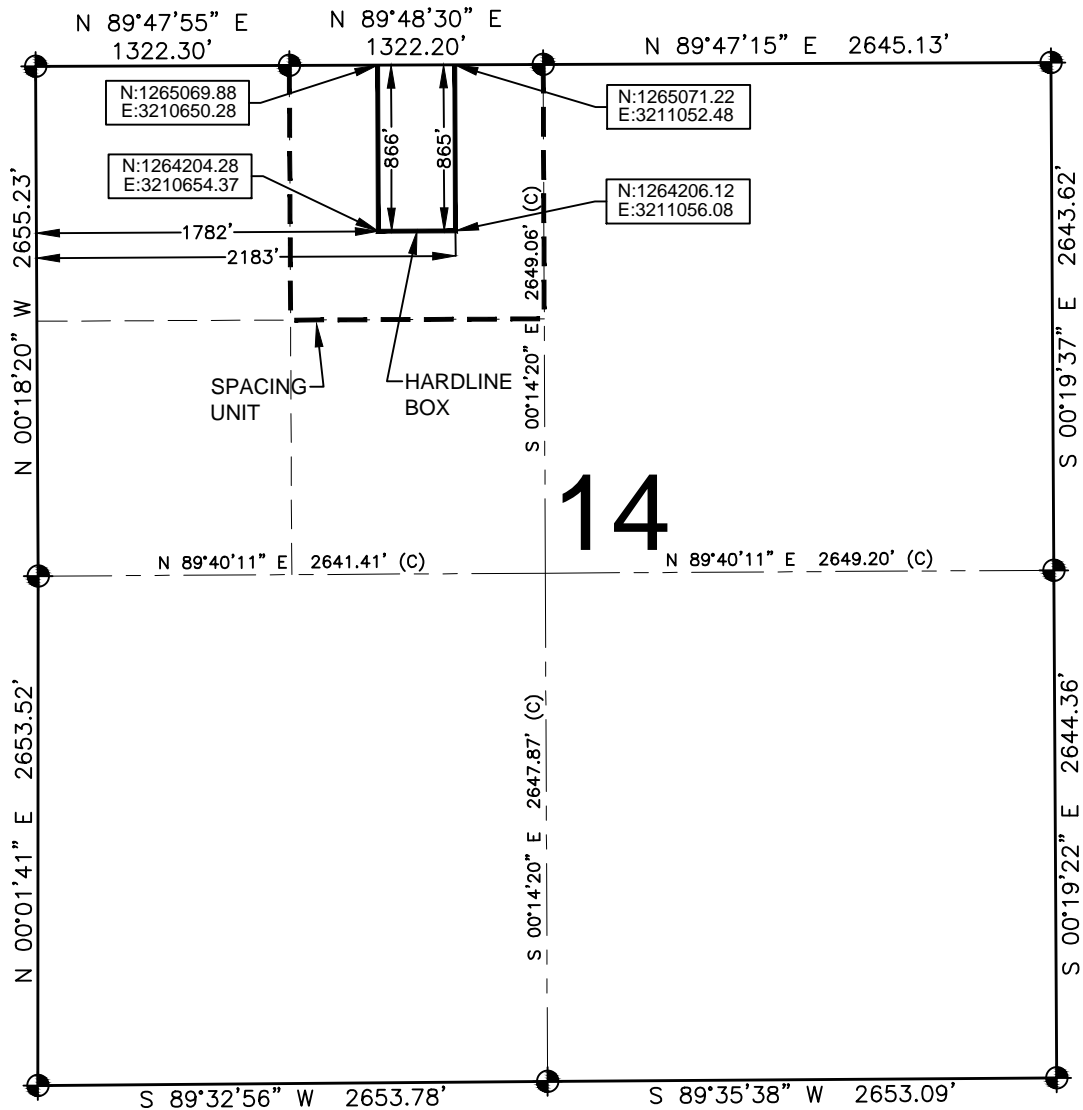
## NOTES:

- THIS DOCUMENT IS NOT A LAND SURVEY PLAT OR IMPROVEMENT SURVEY PLAT. THIS DOCUMENT DOES NOT REFLECT A FIELD SURVEY. SECTION BREAKDOWN, MONUMENTATION AND HORIZONTAL POSITIONS SHOWN ARE BASED ON THE HEEL AND BOTTOM HOLE LOCATION PROVIDED BY ANADARKO PETROLEUM CORPORATION



# HARDLINE EXHIBIT: GRISWOLD 3N-11HZ

SECTION 14, TOWNSHIP 1 NORTH, RANGE 66 WEST, 6TH P.M.



## LEGEND

- = EXISTING MONUMENT
- = PROPOSED HEEL
- ⬮ = BOTTOM HOLE
- BH = BOTTOM HOLE

QRT/QRT SECTIONS WITHIN PATH OF THE HARDLINE

NENW, SEC. 14

## NOTES:

- THIS DOCUMENT IS NOT A LAND SURVEY PLAT OR IMPROVEMENT SURVEY PLAT. THIS DOCUMENT DOES NOT REFLECT A FIELD SURVEY. SECTION BREAKDOWN, MONUMENTATION AND HORIZONTAL POSITIONS SHOWN ARE BASED ON THE HEEL AND BOTTOM HOLE LOCATION PROVIDED BY ANADARKO PETROLEUM CORPORATION

