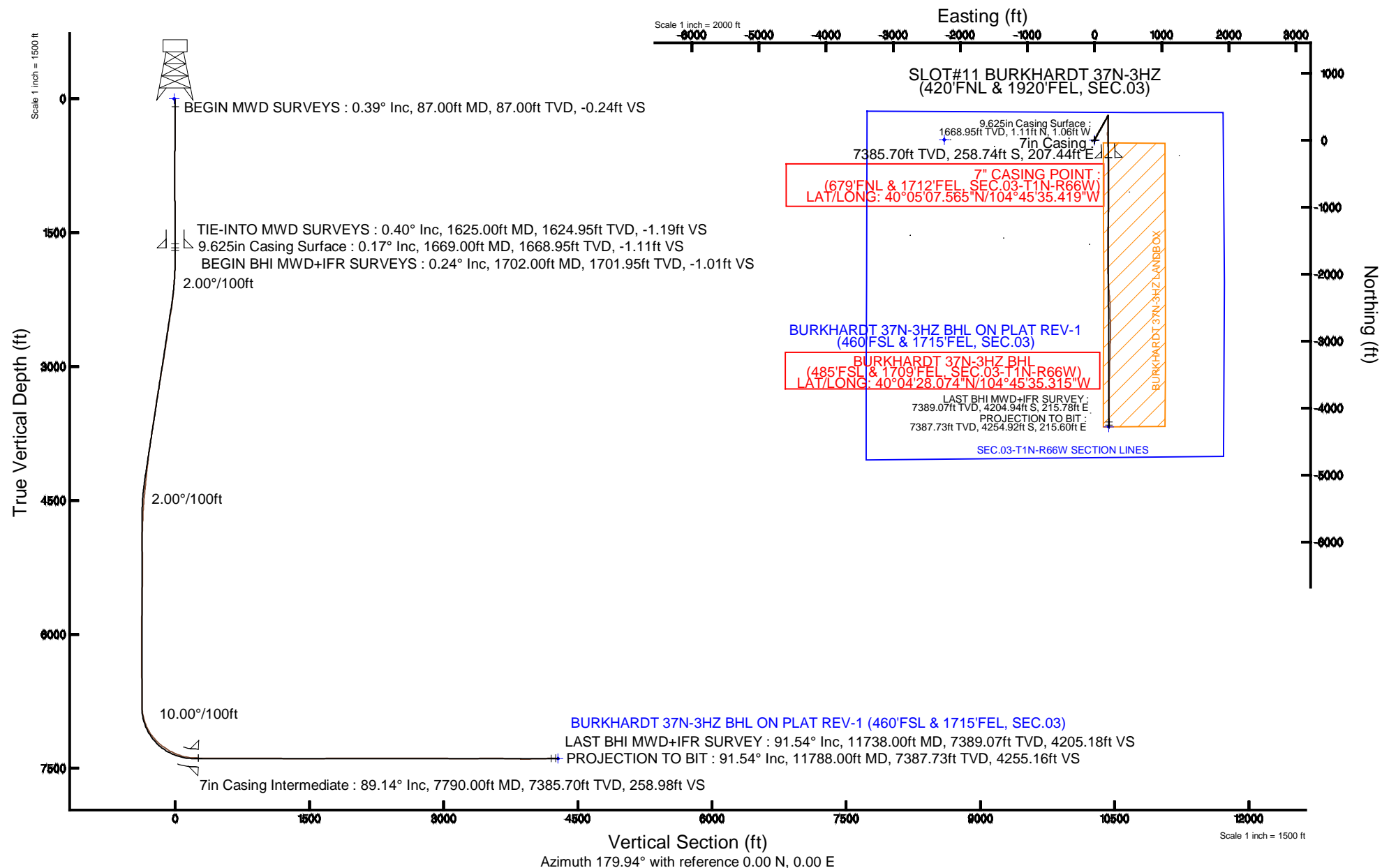


Location:	COLORADO	Slot:	SLOT#11 BURKHARDT 37N-3HZ (420°FNL & 1920°FEL, SEC.03)
Field:	WELD COUNTY (KERR MCGEE)	Well:	BURKHARDT 37N-3HZ
Facility:	SEC.03-T1N-R66W	Wellbore:	BURKHARDT 37N-3HZ PWB

Plot reference wellpath is BURKHARDT 37N-3HZ (REV-A.0) PWP	
True vertical depths are referenced to XTREME 6 (16KB) (RKB)	Grid System: NAD83 / Lambert Colorado SP, Northern Zone (501), US feet
Measured depths are referenced to XTREME 6 (16KB) (RKB)	North Reference: True north
XTREME 6 (16KB) (RKB) to Mean Sea Level: 5076 feet	Scale: True distance
Mean Sea Level to Mud line (At Slot: SLOT#11 BURKHARDT 37N-3HZ (420FNL & 1920FEL, SEC.03)): 0 feet	Depths are in feet
Coordinates are in feet referenced to Slot	Created by: amarcn on 10/13/2014



# Actual Wellpath Report

BURKHARDT 37N-3HZ AWP

Page 1 of 6

## REFERENCE WELLPATH IDENTIFICATION

Operator	KERR-MCGEE OIL & GAS ONSHORE LP	Slot	SLOT#11 BURKHARDT 37N-3HZ (420'FNL & 1920'FEL, SEC.03)
Area	COLORADO	Well	BURKHARDT 37N-3HZ
Field	WELD COUNTY (KERR MCGEE)	Wellbore	BURKHARDT 37N-3HZ AWB
Facility	SEC.03-T1N-R66W		

## REPORT SETUP INFORMATION

Projection System	NAD83 / Lambert Colorado SP, Northern Zone (501), US feet	Software System	WellArchitect® 4.0.0
North Reference	True	User	Amarcar
Scale	0.999961	Report Generated	10/13/2014 at 2:15:27 PM
Convergence at slot	n/a	Database/Source file	WellArchitectDB/BURKHARDT_37N-3HZ_AWB.xml

## WELLPATH LOCATION

	Local coordinates		Grid coordinates		Geographic coordinates	
	North[ft]	East[ft]	Easting[US ft]	Northing[US ft]	Latitude	Longitude
Slot Location	-8.10	2239.89	3206887.10	1275089.92	40°05'10.122"N	104°45'38.088"W
Facility Reference Pt			3204647.32	1275079.54	40°05'10.203"N	104°46'06.906"W
Field Reference Pt			3197771.84	1268891.29	40°04'09.600"N	104°47'36.000"W

## WELLPATH DATUM

Calculation method	Minimum curvature	XTREME 6 (16'KB) (RKB) to Facility Vertical Datum	5076.00ft
Horizontal Reference Pt	Slot	XTREME 6 (16'KB) (RKB) to Mean Sea Level	5076.00ft
Vertical Reference Pt	XTREME 6 (16'KB) (RKB)	XTREME 6 (16'KB) (RKB) to Mud Line at Slot (SLOT#11 BURKHARDT 37N-3HZ (420'FNL & 1920'FEL, SEC.03))	5076.00ft
MD Reference Pt	XTREME 6 (16'KB) (RKB)	Section Origin	N 0.00, E 0.00 ft
Field Vertical Reference	Mean Sea Level	Section Azimuth	179.94°

# Actual Wellpath Report

BURKHARDT 37N-3HZ AWP

Page 2 of 6

## REFERENCE WELLPATH IDENTIFICATION

Operator	KERR-MCGEE OIL & GAS ONSHORE LP	Slot	SLOT#11 BURKHARDT 37N-3HZ (420'FNL & 1920'FEL, SEC.03)
Area	COLORADO	Well	BURKHARDT 37N-3HZ
Field	WELD COUNTY (KERR MCGEE)	Wellbore	BURKHARDT 37N-3HZ AWP
Facility	SEC.03-T1N-R66W		

## WELLPATH DATA (114 stations) † = interpolated/extrapolated station

MD [ft]	Inclination [°]	Azimuth [°]	TVD [ft]	Vert Sect [ft]	North [ft]	East [ft]	Latitude	Longitude	DLS [°/100ft]	Comments
0.00†	0.000	342.600	0.00	0.00	0.00	0.00	40°05'10.122"N	104°45'38.088"W	0.00	
16.00	0.000	342.600	16.00	0.00	0.00	0.00	40°05'10.122"N	104°45'38.088"W	0.00	
86.00	0.400	342.600	86.00	-0.23	0.23	-0.07	40°05'10.124"N	104°45'38.089"W	0.57	
87.00†	0.394	342.468	87.00	-0.24	0.24	-0.08	40°05'10.124"N	104°45'38.089"W	0.58	BEGIN MWD SURVEYS
167.00	0.100	210.000	167.00	-0.44	0.44	-0.19	40°05'10.126"N	104°45'38.090"W	0.58	
245.00	0.700	305.200	245.00	-0.66	0.66	-0.62	40°05'10.128"N	104°45'38.096"W	0.92	
326.00	0.400	0.000	325.99	-1.23	1.23	-1.02	40°05'10.134"N	104°45'38.101"W	0.71	
406.00	0.500	350.100	405.99	-1.85	1.85	-1.08	40°05'10.140"N	104°45'38.102"W	0.16	
486.00	0.400	357.200	485.99	-2.47	2.47	-1.15	40°05'10.146"N	104°45'38.103"W	0.14	
566.00	0.700	347.100	565.98	-3.23	3.23	-1.28	40°05'10.154"N	104°45'38.104"W	0.39	
646.00	0.400	300.400	645.98	-3.85	3.84	-1.63	40°05'10.160"N	104°45'38.109"W	0.64	
726.00	0.300	57.700	725.98	-4.10	4.10	-1.69	40°05'10.162"N	104°45'38.110"W	0.75	
806.00	0.300	334.900	805.98	-4.40	4.40	-1.60	40°05'10.165"N	104°45'38.109"W	0.50	
886.00	0.500	64.500	885.98	-4.74	4.74	-1.38	40°05'10.169"N	104°45'38.106"W	0.73	
966.00	0.600	148.100	965.98	-4.53	4.53	-0.84	40°05'10.167"N	104°45'38.099"W	0.92	
1046.00	0.300	98.400	1045.97	-4.15	4.15	-0.41	40°05'10.163"N	104°45'38.093"W	0.58	
1126.00	0.700	173.200	1125.97	-3.63	3.63	-0.15	40°05'10.158"N	104°45'38.090"W	0.86	
1206.00	0.700	179.400	1205.97	-2.66	2.66	-0.08	40°05'10.148"N	104°45'38.089"W	0.09	
1286.00	0.800	206.500	1285.96	-1.67	1.67	-0.33	40°05'10.138"N	104°45'38.092"W	0.46	
1366.00	0.400	131.800	1365.95	-0.98	0.98	-0.37	40°05'10.132"N	104°45'38.093"W	0.99	
1446.00	0.100	354.900	1445.95	-0.87	0.87	-0.17	40°05'10.131"N	104°45'38.090"W	0.60	
1526.00	0.300	316.000	1525.95	-1.09	1.09	-0.32	40°05'10.133"N	104°45'38.092"W	0.29	
1606.00	0.400	263.400	1605.95	-1.21	1.21	-0.74	40°05'10.134"N	104°45'38.098"W	0.40	
1625.00	0.400	262.000	1624.95	-1.19	1.19	-0.87	40°05'10.134"N	104°45'38.099"W	0.05	TIE-INTO MWD SURVEYS
1702.00	0.240	149.580	1701.95	-1.01	1.01	-1.06	40°05'10.132"N	104°45'38.102"W	0.70	BEGIN BHI MWD+IFR SURVEYS
1793.00	0.240	130.980	1792.95	-0.72	0.72	-0.82	40°05'10.129"N	104°45'38.099"W	0.09	
1886.00	1.760	15.850	1885.94	-1.97	1.97	-0.28	40°05'10.141"N	104°45'38.092"W	2.02	
1977.00	3.410	19.240	1976.84	-5.87	5.87	0.99	40°05'10.180"N	104°45'38.075"W	1.82	
2067.00	4.730	29.880	2066.61	-11.61	11.61	3.72	40°05'10.237"N	104°45'38.040"W	1.68	
2158.00	6.140	33.580	2157.20	-18.91	18.92	8.29	40°05'10.309"N	104°45'37.981"W	1.60	
2249.00	8.020	32.490	2247.50	-28.32	28.33	14.39	40°05'10.402"N	104°45'37.903"W	2.07	
2340.00	9.840	28.140	2337.40	-40.52	40.54	21.47	40°05'10.523"N	104°45'37.812"W	2.13	
2430.00	10.800	28.040	2425.94	-54.74	54.77	29.06	40°05'10.663"N	104°45'37.714"W	1.07	
2612.00	9.050	23.770	2605.21	-82.88	82.92	42.84	40°05'10.941"N	104°45'37.537"W	1.04	
2788.00	8.940	22.220	2779.05	-108.19	108.25	53.59	40°05'11.192"N	104°45'37.398"W	0.15	
2958.00	11.620	32.540	2946.32	-134.85	134.92	67.80	40°05'11.455"N	104°45'37.216"W	1.91	
3129.00	10.560	31.230	3114.12	-162.74	162.83	85.19	40°05'11.731"N	104°45'36.992"W	0.64	
3300.00	11.150	31.300	3282.06	-190.25	190.36	101.90	40°05'12.003"N	104°45'36.777"W	0.35	
3470.00	9.230	27.740	3449.38	-216.35	216.47	116.79	40°05'12.261"N	104°45'36.585"W	1.19	
3640.00	9.920	28.290	3617.01	-241.30	241.44	130.08	40°05'12.508"N	104°45'36.414"W	0.41	
3810.00	10.230	31.690	3784.39	-267.02	267.18	144.95	40°05'12.762"N	104°45'36.223"W	0.39	
3895.00	9.080	29.120	3868.18	-279.30	279.46	152.18	40°05'12.884"N	104°45'36.130"W	1.44	
3979.00	9.250	33.330	3951.11	-290.72	290.89	159.11	40°05'12.997"N	104°45'36.041"W	0.82	
4064.00	8.130	32.520	4035.13	-301.49	301.67	166.10	40°05'13.103"N	104°45'35.951"W	1.33	
4150.00	7.330	28.340	4120.35	-311.44	311.62	171.97	40°05'13.201"N	104°45'35.875"W	1.14	

# Actual Wellpath Report

BURKHARDT 37N-3HZ AWP

Page 3 of 6

REFERENCE WELLPATH IDENTIFICATION			
Operator	KERR-MCGEE OIL & GAS ONSHORE LP	Slot	SLOT#11 BURKHARDT 37N-3HZ (420'FNL & 1920'FEL, SEC.03)
Area	COLORADO	Well	BURKHARDT 37N-3HZ
Field	WELD COUNTY (KERR MCGEE)	Wellbore	BURKHARDT 37N-3HZ AWB
Facility	SEC.03-T1N-R66W		

WELLPATH DATA (114 stations) † = interpolated/extrapolated station										
MD [ft]	Inclination [°]	Azimuth [°]	TVD [ft]	Vert Sect [ft]	North [ft]	East [ft]	Latitude	Longitude	DLS [°/100ft]	Comments
4235.00	6.600	24.470	4204.72	-320.66	320.84	176.57	40°05'13.293"N	104°45'35.816"W	1.02	
4318.00	5.990	20.780	4287.22	-329.04	329.23	180.08	40°05'13.376"N	104°45'35.771"W	0.88	
4403.00	5.950	19.980	4371.76	-337.33	337.52	183.16	40°05'13.457"N	104°45'35.731"W	0.11	
4488.00	5.560	17.520	4456.33	-345.39	345.59	185.90	40°05'13.537"N	104°45'35.696"W	0.54	
4573.00	4.860	22.100	4540.98	-352.65	352.85	188.50	40°05'13.609"N	104°45'35.663"W	0.96	
4659.00	3.470	38.990	4626.76	-358.05	358.25	191.51	40°05'13.662"N	104°45'35.624"W	2.14	
4744.00	3.110	31.880	4711.62	-362.00	362.20	194.34	40°05'13.701"N	104°45'35.588"W	0.64	
4829.00	2.690	20.670	4796.51	-365.82	366.03	196.26	40°05'13.739"N	104°45'35.563"W	0.83	
4914.00	2.520	54.890	4881.42	-368.76	368.97	198.50	40°05'13.768"N	104°45'35.534"W	1.81	
5000.00	0.130	15.170	4967.40	-369.94	370.15	200.07	40°05'13.780"N	104°45'35.514"W	2.82	
5083.00	3.110	233.210	5050.36	-368.69	368.89	198.29	40°05'13.767"N	104°45'35.537"W	3.87	
5168.00	1.130	232.550	5135.29	-366.80	367.00	195.78	40°05'13.749"N	104°45'35.569"W	2.33	
5253.00	0.620	88.970	5220.29	-366.30	366.50	195.57	40°05'13.744"N	104°45'35.572"W	1.96	
5424.00	0.770	49.400	5391.28	-367.06	367.27	197.37	40°05'13.751"N	104°45'35.549"W	0.29	
5680.00	1.120	14.630	5647.24	-370.60	370.81	199.31	40°05'13.786"N	104°45'35.524"W	0.26	
5935.00	0.350	42.930	5902.22	-373.58	373.79	200.47	40°05'13.816"N	104°45'35.509"W	0.32	
6189.00	0.460	47.210	6156.22	-374.84	375.05	201.75	40°05'13.828"N	104°45'35.492"W	0.04	
6444.00	0.850	157.810	6411.21	-373.78	373.99	203.21	40°05'13.818"N	104°45'35.473"W	0.43	
6699.00	0.520	119.660	6666.19	-371.45	371.67	204.93	40°05'13.795"N	104°45'35.451"W	0.21	
6827.00	0.920	125.800	6794.18	-370.56	370.78	206.27	40°05'13.786"N	104°45'35.434"W	0.32	
6870.00	4.320	173.350	6837.13	-368.75	368.97	206.74	40°05'13.768"N	104°45'35.428"W	8.75	
6912.00	8.220	182.560	6878.87	-364.18	364.40	206.79	40°05'13.723"N	104°45'35.427"W	9.56	
6955.00	11.710	185.900	6921.22	-356.77	356.98	206.20	40°05'13.650"N	104°45'35.435"W	8.22	
6997.00	16.870	188.210	6961.90	-346.49	346.70	204.89	40°05'13.548"N	104°45'35.452"W	12.36	
7040.00	21.430	186.340	7002.51	-332.50	332.71	203.13	40°05'13.410"N	104°45'35.475"W	10.70	
7082.00	25.380	184.550	7041.05	-315.90	316.11	201.57	40°05'13.246"N	104°45'35.495"W	9.55	
7125.00	28.980	182.250	7079.30	-296.30	296.51	200.43	40°05'13.052"N	104°45'35.509"W	8.72	
7168.00	33.890	182.060	7115.97	-273.89	274.10	199.59	40°05'12.831"N	104°45'35.520"W	11.42	
7210.00	38.040	180.120	7149.96	-249.24	249.45	199.14	40°05'12.587"N	104°45'35.526"W	10.25	
7253.00	43.400	181.580	7182.54	-221.20	221.41	198.70	40°05'12.310"N	104°45'35.531"W	12.66	
7295.00	47.520	182.430	7211.99	-191.30	191.50	197.65	40°05'12.014"N	104°45'35.545"W	9.91	
7338.00	52.060	183.060	7239.75	-158.51	158.71	196.07	40°05'11.690"N	104°45'35.565"W	10.62	
7381.00	54.570	181.950	7265.43	-124.06	124.26	194.57	40°05'11.350"N	104°45'35.585"W	6.19	
7423.00	57.680	179.840	7288.84	-89.20	89.41	194.04	40°05'11.006"N	104°45'35.592"W	8.50	
7466.00	61.380	178.470	7310.65	-52.15	52.36	194.59	40°05'10.639"N	104°45'35.584"W	9.03	
7508.00	66.000	178.020	7329.26	-14.53	14.73	195.75	40°05'10.268"N	104°45'35.570"W	11.04	
7551.00	68.360	177.710	7345.93	25.08	-24.87	197.22	40°05'09.876"N	104°45'35.551"W	5.53	
7593.00	72.790	177.040	7359.90	64.64	-64.43	199.04	40°05'09.485"N	104°45'35.527"W	10.65	
7636.00	76.780	176.910	7371.18	106.06	-105.85	201.23	40°05'09.076"N	104°45'35.499"W	9.28	
7678.00	82.810	177.370	7378.62	147.33	-147.12	203.29	40°05'08.668"N	104°45'35.473"W	14.40	
7721.00	85.490	177.420	7383.00	190.06	-189.85	205.24	40°05'08.246"N	104°45'35.448"W	6.23	
7751.00	87.960	177.990	7384.71	219.99	-219.77	206.43	40°05'07.950"N	104°45'35.432"W	8.45	
7790.00†	89.138	179.041	7385.70	258.96	-258.74	207.44	40°05'07.565"N	104°45'35.419"W	4.05	7" CASING POINT
7800.00	89.440	179.310	7385.83	268.96	-268.74	207.59	40°05'07.466"N	104°45'35.417"W	4.05	
7901.00	90.030	179.950	7386.29	369.96	-369.74	208.24	40°05'06.468"N	104°45'35.409"W	0.86	

### REFERENCE WELLPATH IDENTIFICATION

Operator	KERR-MCGEE OIL & GAS ONSHORE LP	Slot	SLOT#11 BURKHARDT 37N-3HZ (420'FNL & 1920'FEL, SEC.03)
Area	COLORADO	Well	BURKHARDT 37N-3HZ
Field	WELD COUNTY (KERR MCGEE)	Wellbore	BURKHARDT 37N-3HZ AWB
Facility	SEC.03-T1N-R66W		

### WELLPATH DATA (114 stations)

MD [ft]	Inclination [°]	Azimuth [°]	TVD [ft]	Vert Sect [ft]	North [ft]	East [ft]	Latitude	Longitude	DLS [°/100ft]	Comments
7986.00	89.280	179.710	7386.80	454.95	-454.74	208.49	40°05'05.628"N	104°45'35.406"W	0.93	
8157.00	89.930	179.960	7387.98	625.95	-625.73	208.98	40°05'03.938"N	104°45'35.399"W	0.41	
8327.00	89.720	179.980	7388.50	795.95	-795.73	209.07	40°05'02.258"N	104°45'35.398"W	0.12	
8498.00	89.750	180.350	7389.29	966.94	-966.73	208.58	40°05'00.569"N	104°45'35.405"W	0.22	
8668.00	89.660	180.910	7390.17	1136.93	-1136.71	206.71	40°04'58.889"N	104°45'35.429"W	0.33	
8838.00	89.560	183.440	7391.33	1306.78	-1306.57	200.26	40°04'57.210"N	104°45'35.512"W	1.49	
9008.00	90.150	179.710	7391.76	1476.68	-1476.48	195.59	40°04'55.531"N	104°45'35.572"W	2.22	
9178.00	90.520	180.010	7390.76	1646.68	-1646.47	196.00	40°04'53.851"N	104°45'35.566"W	0.28	
9349.00	90.330	178.960	7389.49	1817.66	-1817.46	197.54	40°04'52.162"N	104°45'35.547"W	0.62	
9518.00	89.600	178.860	7389.60	1986.64	-1986.43	200.76	40°04'50.492"N	104°45'35.505"W	0.44	
9690.00	90.240	175.750	7389.84	2158.43	-2158.21	208.84	40°04'48.794"N	104°45'35.401"W	1.85	
9861.00	90.370	175.390	7388.93	2328.93	-2328.70	222.05	40°04'47.109"N	104°45'35.231"W	0.22	
10031.00	89.930	178.810	7388.48	2498.70	-2498.46	230.65	40°04'45.432"N	104°45'35.121"W	2.03	
10202.00	90.670	178.820	7387.59	2669.66	-2669.42	234.19	40°04'43.742"N	104°45'35.075"W	0.43	
10372.00	89.290	179.720	7387.65	2839.64	-2839.40	236.35	40°04'42.063"N	104°45'35.047"W	0.97	
10542.00	89.130	181.290	7389.99	3009.61	-3009.37	234.85	40°04'40.383"N	104°45'35.067"W	0.93	
10712.00	89.690	181.510	7391.74	3179.55	-3179.31	230.70	40°04'38.703"N	104°45'35.120"W	0.35	
10883.00	90.770	181.750	7391.05	3350.47	-3350.24	225.84	40°04'37.014"N	104°45'35.183"W	0.65	
11054.00	90.460	181.490	7389.22	3521.39	-3521.16	221.00	40°04'35.325"N	104°45'35.245"W	0.24	
11224.00	88.180	180.510	7391.24	3691.33	-3691.11	218.04	40°04'33.646"N	104°45'35.283"W	1.46	
11394.00	88.950	179.740	7395.49	3861.28	-3861.05	217.67	40°04'31.966"N	104°45'35.288"W	0.64	
11564.00	91.880	180.650	7394.26	4031.25	-4031.02	217.09	40°04'30.287"N	104°45'35.295"W	1.80	
11738.00	91.540	180.210	7389.07	4205.16	-4204.94	215.78	40°04'28.568"N	104°45'35.312"W	0.32	LAST BHI MWD+IFR SURVEY
11788.00	91.540	180.210	7387.73	4255.15	-4254.92	215.60	40°04'28.074"N	104°45'35.315"W	0.00	PROJECTION TO BIT

### HOLE & CASING SECTIONS - Ref Wellbore: BURKHARDT 37N-3HZ AWB Ref Wellpath: BURKHARDT 37N-3HZ AWP

String/Diameter	Start MD [ft]	End MD [ft]	Interval [ft]	Start TVD [ft]	End TVD [ft]	Start N/S [ft]	Start E/W [ft]	End N/S [ft]	End E/W [ft]
13.5in Open Hole	16.00	1680.00	1664.00	16.00	1679.95	0.00	0.00	1.08	-1.08
9.625in Casing Surface	16.00	1669.00	1653.00	16.00	1668.95	0.00	0.00	1.11	-1.06
8.75in Open Hole	1680.00	7800.00	6120.00	1679.95	7385.83	1.08	-1.08	-268.74	207.59
7in Casing	16.00	7790.00	7774.00	16.00	7385.70	0.00	0.00	-258.74	207.44
6.125in Open Hole	7800.00	11788.00	3988.00	7385.83	7387.73	-268.74	207.59	-4254.92	215.60

# Actual Wellpath Report

BURKHARDT 37N-3HZ AWP

Page 5 of 6

REFERENCE WELLPATH IDENTIFICATION			
Operator	KERR-MCGEE OIL & GAS ONSHORE LP	Slot	SLOT#11 BURKHARDT 37N-3HZ (420'FNL & 1920'FEL, SEC.03)
Area	COLORADO	Well	BURKHARDT 37N-3HZ
Field	WELD COUNTY (KERR MCGEE)	Wellbore	BURKHARDT 37N-3HZ AWB
Facility	SEC.03-T1N-R66W		

WELLPATH COMPOSITION - Ref Wellbore: BURKHARDT 37N-3HZ AWB    Ref Wellpath: BURKHARDT 37N-3HZ AWP				
Start MD [ft]	End MD [ft]	Positional Uncertainty Model	Log Name/Comment	Wellbore
16.00	1625.00	ISCWSA MWD, Rev. 2 (Standard)	CATHEDRAL ENERGY MWD SURVEYS 13.5" <86-1625>	BURKHARDT 37N-3HZ AWB
1625.00	7800.00	NaviTrak (MAGCORR,IFR)	BHI MWD+IFR SURVEYS 8.75" <1702-7800>	BURKHARDT 37N-3HZ AWB
7800.00	11738.00	NaviTrak (MAGCORR,IFR)	BHI MWD+IFR SURVEYS 6.125" <7901-11738>	BURKHARDT 37N-3HZ AWB
11738.00	11788.00	Blind Drilling (std)	Projection to bit	BURKHARDT 37N-3HZ AWB

# Actual Wellpath Report

BURKHARDT 37N-3HZ AWP

Page 6 of 6

REFERENCE WELLPATH IDENTIFICATION			
Operator	KERR-MCGEE OIL & GAS ONSHORE LP	Slot	SLOT#11 BURKHARDT 37N-3HZ (420'FNL & 1920'FEL, SEC.03)
Area	COLORADO	Well	BURKHARDT 37N-3HZ
Field	WELD COUNTY (KERR MCGEE)	Wellbore	BURKHARDT 37N-3HZ AWB
Facility	SEC.03-T1N-R66W		

WELLPATH COMMENTS				
MD [ft]	Inclination [°]	Azimuth [°]	TVD [ft]	Comment
87.00	0.394	342.468	87.00	BEGIN MWD SURVEYS
1625.00	0.400	262.000	1624.95	TIE-INTO MWD SURVEYS
1702.00	0.240	149.580	1701.95	BEGIN BHI MWD+IFR SURVEYS
7790.00	89.138	179.041	7385.70	7" CASING POINT
11738.00	91.540	180.210	7389.07	LAST BHI MWD+IFR SURVEY
11788.00	91.540	180.210	7387.73	PROJECTION TO BIT