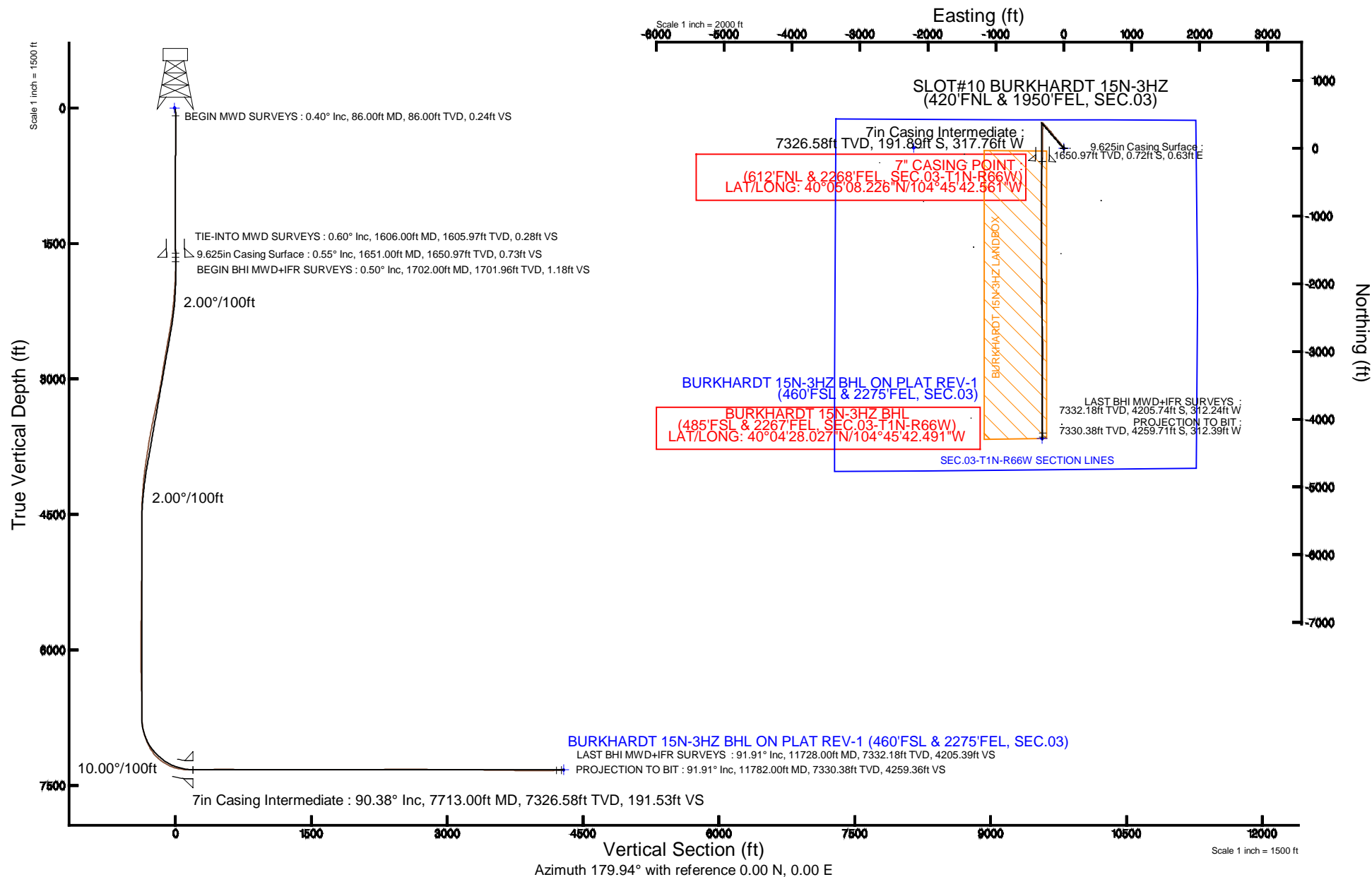


Location:	COLORADO	Slot:	SLOT#10 BURKHARDT 15N-3HZ (420'FNL & 1950'FEL, SEC.03)
Field:	WELD COUNTY (KERR MCGEE)	Well:	BURKHARDT 15N-3HZ
Facility:	SEC.03-T1N-R66W	Wellbore:	BURKHARDT 15N-3HZ PWB

Plot reference wellpath is BURKHARDT 15N-3HZ (REV-6.0) PWP	
True vertical depths are referenced to XTREME 6 (16KB) (RKB)	Grid System: NAD83 / Lambert Colorado SP, Northern Zone (501), US feet
Measured depths are referenced to XTREME 6 (16KB) (RKB)	North Reference: True north
XTREME 6 (16KB) (RKB) to Mean Sea Level: 5076 feet	Scale: True distance
Mean Sea Level to Mud line (At Slot: SLOT#10 BURKHARDT 15N-3HZ (420'FNL & 1950'FEL, SEC.03)): 0 feet	Depths are in feet
Coordinates are in feet referenced to Slot#	Created by: amarcar on 10/13/2014



# Actual Wellpath Report

BURKHARDT 15N-3HZ AWP

Page 1 of 6

## REFERENCE WELLPATH IDENTIFICATION

Operator	KERR-MCGEE OIL & GAS ONSHORE LP	Slot	SLOT#10 BURKHARDT 15N-3HZ (420'FNL & 1950'FEL, SEC.03)
Area	COLORADO	Well	BURKHARDT 15N-3HZ
Field	WELD COUNTY (KERR MCGEE)	Wellbore	BURKHARDT 15N-3HZ AWB
Facility	SEC.03-T1N-R66W		

## REPORT SETUP INFORMATION

Projection System	NAD83 / Lambert Colorado SP, Northern Zone (501), US feet	Software System	WellArchitect® 4.0.0
North Reference	True	User	Amarcar
Scale	0.999961	Report Generated	10/13/2014 at 11:51:23 AM
Convergence at slot	n/a	Database/Source file	WellArchitectDB/BURKHARDT_15N-3HZ_AWB.xml

## WELLPATH LOCATION

	Local coordinates		Grid coordinates		Geographic coordinates	
	North[ft]	East[ft]	Easting[US ft]	Northing[US ft]	Latitude	Longitude
Slot Location	-8.10	2209.96	3206857.18	1275089.67	40°05'10.122"N	104°45'38.473"W
Facility Reference Pt			3204647.32	1275079.54	40°05'10.203"N	104°46'06.906"W
Field Reference Pt			3197771.84	1268891.29	40°04'09.600"N	104°47'36.000"W

## WELLPATH DATUM

Calculation method	Minimum curvature	XTREME 6 (16'KB) (RKB) to Facility Vertical Datum	5076.00ft
Horizontal Reference Pt	Slot	XTREME 6 (16'KB) (RKB) to Mean Sea Level	5076.00ft
Vertical Reference Pt	XTREME 6 (16'KB) (RKB)	XTREME 6 (16'KB) (RKB) to Mud Line at Slot (SLOT#10 BURKHARDT 15N-3HZ (420'FNL & 1950'FEL, SEC.03))	5076.00ft
MD Reference Pt	XTREME 6 (16'KB) (RKB)	Section Origin	N 0.00, E 0.00 ft
Field Vertical Reference	Mean Sea Level	Section Azimuth	179.94°

### REFERENCE WELLPATH IDENTIFICATION

Operator	KERR-MCGEE OIL & GAS ONSHORE LP	Slot	SLOT#10 BURKHARDT 15N-3HZ (420'FNL & 1950'FEL, SEC.03)
Area	COLORADO	Well	BURKHARDT 15N-3HZ
Field	WELD COUNTY (KERR MCGEE)	Wellbore	BURKHARDT 15N-3HZ AWB
Facility	SEC.03-T1N-R66W		

### WELLPATH DATA (111 stations) † = interpolated/extrapolated station

MD [ft]	Inclination [°]	Azimuth [°]	TVD [ft]	Vert Sect [ft]	North [ft]	East [ft]	Latitude	Longitude	DLS [°/100ft]	Comments
0.00†	0.000	177.800	0.00	0.00	0.00	0.00	40°05'10.122"N	104°45'38.473"W	0.00	
16.00	0.000	177.800	16.00	0.00	0.00	0.00	40°05'10.122"N	104°45'38.473"W	0.00	
86.00	0.400	177.800	86.00	0.24	-0.24	0.01	40°05'10.120"N	104°45'38.473"W	0.57	BEGIN MWD SURVEYS
167.00	0.400	135.200	167.00	0.73	-0.73	0.22	40°05'10.115"N	104°45'38.470"W	0.36	
245.00	0.300	118.500	245.00	1.02	-1.02	0.59	40°05'10.112"N	104°45'38.465"W	0.18	
326.00	0.600	318.100	326.00	0.80	-0.80	0.49	40°05'10.114"N	104°45'38.467"W	1.10	
406.00	0.500	278.400	405.99	0.44	-0.44	-0.13	40°05'10.118"N	104°45'38.475"W	0.48	
486.00	0.200	343.800	485.99	0.26	-0.26	-0.52	40°05'10.119"N	104°45'38.480"W	0.57	
566.00	0.600	328.200	565.99	-0.24	0.23	-0.78	40°05'10.124"N	104°45'38.483"W	0.51	
646.00	0.300	45.700	645.99	-0.74	0.74	-0.85	40°05'10.129"N	104°45'38.484"W	0.76	
726.00	0.100	199.700	725.99	-0.82	0.82	-0.72	40°05'10.130"N	104°45'38.482"W	0.49	
806.00	0.300	99.300	805.99	-0.72	0.72	-0.54	40°05'10.129"N	104°45'38.480"W	0.42	
886.00	0.400	316.600	885.98	-0.89	0.89	-0.52	40°05'10.131"N	104°45'38.480"W	0.83	
966.00	0.200	23.600	965.98	-1.22	1.22	-0.66	40°05'10.134"N	104°45'38.481"W	0.46	
1046.00	0.100	278.400	1045.98	-1.36	1.36	-0.67	40°05'10.135"N	104°45'38.482"W	0.31	
1126.00	0.200	350.700	1125.98	-1.50	1.50	-0.76	40°05'10.137"N	104°45'38.483"W	0.24	
1206.00	0.300	352.200	1205.98	-1.85	1.85	-0.81	40°05'10.140"N	104°45'38.483"W	0.13	
1286.00	0.300	90.800	1285.98	-2.05	2.05	-0.63	40°05'10.142"N	104°45'38.481"W	0.57	
1366.00	0.700	143.500	1365.98	-1.66	1.66	-0.13	40°05'10.138"N	104°45'38.475"W	0.71	
1406.00	0.500	159.600	1405.98	-1.30	1.30	0.07	40°05'10.135"N	104°45'38.472"W	0.65	
1446.00	0.200	143.800	1445.98	-1.08	1.08	0.18	40°05'10.133"N	104°45'38.471"W	0.78	
1486.00	0.600	127.300	1485.98	-0.89	0.89	0.38	40°05'10.131"N	104°45'38.468"W	1.03	
1526.00	0.500	182.700	1525.97	-0.59	0.59	0.54	40°05'10.128"N	104°45'38.466"W	1.30	
1566.00	0.700	172.200	1565.97	-0.18	0.18	0.57	40°05'10.124"N	104°45'38.466"W	0.57	
1606.00	0.600	179.000	1605.97	0.28	-0.27	0.60	40°05'10.119"N	104°45'38.465"W	0.32	TIE-INTO MWD SURVEYS
1702.00	0.500	166.300	1701.96	1.18	-1.18	0.71	40°05'10.110"N	104°45'38.464"W	0.16	BEGIN BHI MWD+IFR SURVEYS
1793.00	1.500	339.020	1792.96	0.46	-0.46	0.38	40°05'10.117"N	104°45'38.468"W	2.19	
1885.00	2.990	332.010	1884.88	-2.79	2.79	-1.18	40°05'10.150"N	104°45'38.488"W	1.64	
1977.00	4.860	328.410	1976.66	-8.23	8.22	-4.35	40°05'10.203"N	104°45'38.529"W	2.05	
2067.00	5.740	313.500	2066.28	-14.58	14.57	-9.61	40°05'10.266"N	104°45'38.597"W	1.81	
2158.00	7.150	316.450	2156.71	-21.83	21.81	-16.81	40°05'10.338"N	104°45'38.689"W	1.59	
2249.00	8.380	321.950	2246.87	-31.16	31.13	-24.80	40°05'10.430"N	104°45'38.792"W	1.58	
2340.00	9.370	329.640	2336.78	-42.78	42.75	-32.63	40°05'10.544"N	104°45'38.893"W	1.70	
2430.00	11.020	327.620	2425.36	-56.38	56.34	-40.94	40°05'10.679"N	104°45'39.000"W	1.88	
2521.00	12.370	325.110	2514.47	-71.73	71.68	-51.18	40°05'10.830"N	104°45'39.131"W	1.59	
2703.00	13.960	316.810	2691.70	-103.76	103.68	-77.36	40°05'11.147"N	104°45'39.468"W	1.36	
2873.00	12.020	316.170	2857.34	-131.51	131.40	-103.65	40°05'11.421"N	104°45'39.807"W	1.14	
3043.00	12.650	316.910	3023.41	-157.90	157.77	-128.63	40°05'11.681"N	104°45'40.128"W	0.38	
3214.00	15.230	324.420	3189.38	-189.88	189.71	-154.49	40°05'11.997"N	104°45'40.461"W	1.84	
3384.00	14.760	326.370	3353.59	-226.09	225.91	-179.48	40°05'12.354"N	104°45'40.782"W	0.41	
3555.00	15.260	316.220	3518.78	-260.51	260.30	-207.12	40°05'12.694"N	104°45'41.138"W	1.56	
3725.00	12.760	314.250	3683.71	-289.80	289.55	-236.05	40°05'12.983"N	104°45'41.510"W	1.50	
3893.00	11.730	318.840	3847.89	-315.63	315.36	-260.58	40°05'13.238"N	104°45'41.826"W	0.84	
3978.00	10.960	319.200	3931.23	-328.27	327.98	-271.55	40°05'13.363"N	104°45'41.967"W	0.91	
4063.00	9.510	318.510	4014.88	-339.65	339.36	-281.48	40°05'13.476"N	104°45'42.095"W	1.71	

# Actual Wellpath Report

BURKHARDT 15N-3HZ AWP

Page 3 of 6

## REFERENCE WELLPATH IDENTIFICATION

Operator	KERR-MCGEE OIL & GAS ONSHORE LP	Slot	SLOT#10 BURKHARDT 15N-3HZ (420'FNL & 1950'FEL, SEC.03)
Area	COLORADO	Well	BURKHARDT 15N-3HZ
Field	WELD COUNTY (KERR MCGEE)	Wellbore	BURKHARDT 15N-3HZ AWB
Facility	SEC.03-T1N-R66W		

## WELLPATH DATA (111 stations) † = interpolated/extrapolated station

MD [ft]	Inclination [°]	Azimuth [°]	TVD [ft]	Vert Sect [ft]	North [ft]	East [ft]	Latitude	Longitude	DLS [°/100ft]	Comments
4149.00	8.790	315.520	4099.78	-349.67	349.37	-290.79	40°05'13.575"N	104°45'42.214"W	1.00	
4234.00	6.950	305.880	4183.98	-357.33	357.02	-299.51	40°05'13.650"N	104°45'42.326"W	2.66	
4318.00	6.490	306.760	4267.40	-363.16	362.84	-307.43	40°05'13.708"N	104°45'42.428"W	0.56	
4402.00	6.210	306.130	4350.89	-368.69	368.36	-314.90	40°05'13.762"N	104°45'42.525"W	0.34	
4487.00	3.810	294.250	4435.56	-372.56	372.23	-321.19	40°05'13.800"N	104°45'42.605"W	3.06	
4572.00	1.550	267.120	4520.46	-373.67	373.33	-324.91	40°05'13.811"N	104°45'42.653"W	2.98	
4658.00	1.400	209.670	4606.44	-372.70	372.36	-326.60	40°05'13.802"N	104°45'42.675"W	1.66	
4743.00	1.510	199.720	4691.41	-370.75	370.40	-327.49	40°05'13.782"N	104°45'42.686"W	0.32	
4828.00	0.460	51.180	4776.40	-369.91	369.56	-327.60	40°05'13.774"N	104°45'42.688"W	2.26	
5167.00	1.080	45.900	5115.37	-372.98	372.64	-324.25	40°05'13.804"N	104°45'42.645"W	0.18	
5512.00	0.420	347.830	5460.34	-376.47	376.14	-322.18	40°05'13.839"N	104°45'42.618"W	0.27	
5853.00	1.510	16.210	5801.29	-382.01	381.67	-321.19	40°05'13.894"N	104°45'42.605"W	0.34	
6191.00	1.650	149.740	6139.24	-382.08	381.75	-317.49	40°05'13.894"N	104°45'42.558"W	0.86	
6532.00	1.440	157.020	6480.11	-373.89	373.56	-313.34	40°05'13.814"N	104°45'42.504"W	0.08	
6702.00	0.740	120.540	6650.08	-371.36	371.04	-311.56	40°05'13.789"N	104°45'42.482"W	0.56	
6745.00	0.920	98.340	6693.08	-371.17	370.85	-310.98	40°05'13.787"N	104°45'42.474"W	0.85	
6787.00	0.720	123.410	6735.07	-370.98	370.65	-310.43	40°05'13.785"N	104°45'42.467"W	0.97	
6830.00	1.700	163.370	6778.06	-370.22	369.89	-310.02	40°05'13.777"N	104°45'42.462"W	2.88	
6873.00	6.150	169.260	6820.95	-367.34	367.02	-309.41	40°05'13.749"N	104°45'42.454"W	10.38	
6915.00	11.340	174.950	6862.45	-361.01	360.69	-308.63	40°05'13.686"N	104°45'42.444"W	12.51	
6958.00	15.430	175.150	6904.27	-351.10	350.77	-307.77	40°05'13.588"N	104°45'42.433"W	9.51	
7000.00	16.120	180.470	6944.69	-339.70	339.37	-307.35	40°05'13.476"N	104°45'42.427"W	3.81	
7043.00	19.720	183.350	6985.60	-326.48	326.16	-307.82	40°05'13.345"N	104°45'42.433"W	8.62	
7086.00	23.680	183.580	7025.55	-310.62	310.29	-308.78	40°05'13.188"N	104°45'42.446"W	9.21	
7128.00	26.170	181.250	7063.63	-292.94	292.61	-309.51	40°05'13.014"N	104°45'42.455"W	6.37	
7171.00	31.120	181.260	7101.36	-272.33	272.01	-309.96	40°05'12.810"N	104°45'42.461"W	11.51	
7214.00	36.870	180.800	7136.99	-248.31	247.98	-310.39	40°05'12.573"N	104°45'42.466"W	13.39	
7256.00	42.810	180.260	7169.23	-221.41	221.09	-310.63	40°05'12.307"N	104°45'42.470"W	14.17	
7299.00	48.320	181.240	7199.32	-190.72	190.40	-311.04	40°05'12.004"N	104°45'42.475"W	12.92	
7341.00	52.410	181.390	7226.11	-158.40	158.07	-311.79	40°05'11.684"N	104°45'42.484"W	9.74	
7384.00	56.890	182.000	7250.98	-123.35	123.02	-312.83	40°05'11.338"N	104°45'42.498"W	10.48	
7427.00	62.500	181.580	7272.67	-86.26	85.93	-313.98	40°05'10.971"N	104°45'42.513"W	13.07	
7470.00	68.780	180.920	7290.40	-47.12	46.79	-314.83	40°05'10.584"N	104°45'42.524"W	14.67	
7512.00	74.390	180.050	7303.66	-7.29	6.96	-315.16	40°05'10.191"N	104°45'42.528"W	13.50	
7555.00	78.390	179.080	7313.78	34.50	-34.83	-314.84	40°05'09.778"N	104°45'42.524"W	9.56	
7597.00	82.190	180.100	7320.86	75.89	-76.22	-314.55	40°05'09.369"N	104°45'42.520"W	9.36	
7641.00	86.050	181.370	7325.36	119.64	-119.97	-315.11	40°05'08.936"N	104°45'42.527"W	9.23	
7681.00	90.090	182.360	7326.71	159.59	-159.92	-316.41	40°05'08.542"N	104°45'42.544"W	10.40	
7713.00†	90.377	182.463	7326.58	191.56	-191.89	-317.76	40°05'08.226"N	104°45'42.561"W	0.95	7" CASING POINT
7815.00	91.290	182.790	7325.10	293.43	-293.77	-322.43	40°05'07.219"N	104°45'42.621"W	0.95	
7900.00	91.010	182.420	7323.39	378.32	-378.67	-326.30	40°05'06.380"N	104°45'42.671"W	0.55	
7985.00	90.740	181.710	7322.09	463.25	-463.60	-329.36	40°05'05.541"N	104°45'42.710"W	0.89	
8068.00	90.030	181.460	7321.54	546.22	-546.57	-331.65	40°05'04.721"N	104°45'42.740"W	0.91	
8153.00	88.640	180.570	7322.52	631.19	-631.54	-333.16	40°05'03.881"N	104°45'42.759"W	1.94	
8324.00	90.090	179.940	7324.42	802.18	-802.53	-333.92	40°05'02.191"N	104°45'42.769"W	0.92	

# Actual Wellpath Report

BURKHARDT 15N-3HZ AWP

Page 4 of 6

## REFERENCE WELLPATH IDENTIFICATION

Operator	KERR-MCGEE OIL & GAS ONSHORE LP	Slot	SLOT#10 BURKHARDT 15N-3HZ (420'FNL & 1950'FEL, SEC.03)
Area	COLORADO	Well	BURKHARDT 15N-3HZ
Field	WELD COUNTY (KERR MCGEE)	Wellbore	BURKHARDT 15N-3HZ AWB
Facility	SEC.03-T1N-R66W		

## WELLPATH DATA (111 stations)

MD [ft]	Inclination [°]	Azimuth [°]	TVD [ft]	Vert Sect [ft]	North [ft]	East [ft]	Latitude	Longitude	DLS [°/100ft]	Comments
8494.00	89.780	180.030	7324.61	972.18	-972.53	-333.88	40°05'00.511"N	104°45'42.768"W	0.19	
8665.00	90.430	179.450	7324.30	1143.17	-1143.52	-333.10	40°04'58.821"N	104°45'42.758"W	0.51	
8833.00	89.870	179.850	7323.86	1311.17	-1311.52	-332.07	40°04'57.161"N	104°45'42.745"W	0.41	
9008.00	89.660	180.640	7324.58	1486.16	-1486.51	-332.82	40°04'55.432"N	104°45'42.755"W	0.47	
9178.00	90.150	180.530	7324.86	1656.15	-1656.50	-334.56	40°04'53.752"N	104°45'42.777"W	0.30	
9348.00	89.960	180.420	7324.69	1826.14	-1826.50	-335.97	40°04'52.072"N	104°45'42.795"W	0.13	
9519.00	89.040	179.500	7326.19	1997.13	-1997.49	-335.85	40°04'50.382"N	104°45'42.794"W	0.76	
9690.00	91.480	178.610	7325.41	2168.10	-2168.45	-333.03	40°04'48.693"N	104°45'42.757"W	1.52	
9858.00	90.700	178.560	7322.21	2336.02	-2336.36	-328.88	40°04'47.034"N	104°45'42.704"W	0.47	
10028.00	90.550	176.820	7320.36	2505.87	-2506.21	-322.03	40°04'45.355"N	104°45'42.616"W	1.03	
10198.00	89.070	177.740	7320.92	2675.68	-2676.01	-313.96	40°04'43.677"N	104°45'42.512"W	1.03	
10369.00	88.890	179.430	7323.97	2846.60	-2846.92	-309.74	40°04'41.988"N	104°45'42.458"W	0.99	
10539.00	90.060	180.000	7325.53	3016.59	-3016.91	-308.89	40°04'40.308"N	104°45'42.447"W	0.77	
10709.00	90.210	181.610	7325.13	3186.56	-3186.89	-311.28	40°04'38.629"N	104°45'42.477"W	0.95	
10880.00	88.700	179.840	7326.75	3357.53	-3357.86	-313.45	40°04'36.939"N	104°45'42.505"W	1.36	
11050.00	88.880	179.690	7330.34	3527.49	-3527.82	-312.75	40°04'35.259"N	104°45'42.496"W	0.14	
11221.00	89.720	179.530	7332.43	3698.47	-3698.80	-311.59	40°04'33.570"N	104°45'42.481"W	0.50	
11391.00	89.160	179.910	7334.09	3868.46	-3868.79	-310.75	40°04'31.890"N	104°45'42.470"W	0.40	
11560.00	90.120	180.470	7335.15	4037.45	-4037.78	-311.31	40°04'30.220"N	104°45'42.478"W	0.66	
11728.00	91.910	180.160	7332.18	4205.41	-4205.74	-312.24	40°04'28.560"N	104°45'42.490"W	1.08	LAST BHI MWD+IFR SURVEYS
11782.00	91.910	180.160	7330.38	4259.38	-4259.71	-312.39	40°04'28.027"N	104°45'42.491"W	0.00	PROJECTION TO BIT

## HOLE & CASING SECTIONS - Ref Wellbore: BURKHARDT 15N-3HZ AWB Ref Wellpath: BURKHARDT 15N-3HZ AWP

String/Diameter	Start MD [ft]	End MD [ft]	Interval [ft]	Start TVD [ft]	End TVD [ft]	Start N/S [ft]	Start E/W [ft]	End N/S [ft]	End E/W [ft]
13.5in Open Hole	16.00	1661.00	1645.00	16.00	1660.97	0.00	0.00	-0.82	0.64
9.625in Casing Surface	16.00	1651.00	1635.00	16.00	1650.97	0.00	0.00	-0.72	0.63
8.75in Open Hole	1661.00	7723.00	6062.00	1660.97	7326.51	-0.82	0.64	-201.88	-318.19
7in Casing Intermediate	16.00	7713.00	7697.00	16.00	7326.58	0.00	0.00	-191.89	-317.76
6.125in Open Hole	7723.00	11782.00	4059.00	7326.51	7330.38	-201.88	-318.19	-4259.71	-312.39

# Actual Wellpath Report

BURKHARDT 15N-3HZ AWP

Page 5 of 6

## REFERENCE WELLPATH IDENTIFICATION

Operator	KERR-MCGEE OIL & GAS ONSHORE LP	Slot	SLOT#10 BURKHARDT 15N-3HZ (420'FNL & 1950'FEL, SEC.03)
Area	COLORADO	Well	BURKHARDT 15N-3HZ
Field	WELD COUNTY (KERR MCGEE)	Wellbore	BURKHARDT 15N-3HZ AWB
Facility	SEC.03-T1N-R66W		

## TARGETS

Name	MD [ft]	TVD [ft]	North [ft]	East [ft]	Grid East [US ft]	Grid North [US ft]	Latitude	Longitude	Shape
SEC.03-T1N-R66W SECTION LINES		0.00	8.29	-2209.96	3204647.31	1275079.54	40°05'10.203"N	104°46'06.906"W	polygon
BURKHARDT 15N-3HZ BHL ON PLAT REV-1 (460'FSL & 2275'FEL, SEC.03)		7326.00	-4285.16	-320.45	3206572.47	1270802.16	40°04'27.775"N	104°45'42.595"W	point
BURKHARDT 15N-3HZ LANDBOX		7326.00	0.00	0.00	3206857.18	1275089.67	40°05'10.122"N	104°45'38.473"W	polygon

## WELLPATH COMPOSITION - Ref Wellbore: BURKHARDT 15N-3HZ AWB Ref Wellpath: BURKHARDT 15N-3HZ AWP

Start MD [ft]	End MD [ft]	Positional Uncertainty Model	Log Name/Comment	Wellbore
16.00	1606.00	ISCWSA MWD, Rev. 2 (Standard)	CATHEDRAL ENERGY MWD SURVEYS 13.5" <86-1606>	BURKHARDT 15N-3HZ AWB
1606.00	7681.00	NaviTrak (MAGCORR,IFR)	BHI MWD+IFR SURVEYS 8.75" <1702-7681>	BURKHARDT 15N-3HZ AWB
7681.00	11728.00	NaviTrak (MAGCORR,IFR)	BHI MWD+IFR SURVEYS 6.125" <7815-11728>	BURKHARDT 15N-3HZ AWB
11728.00	11782.00	Blind Drilling (std)	Projection to bit	BURKHARDT 15N-3HZ AWB

# Actual Wellpath Report

BURKHARDT 15N-3HZ AWP

Page 6 of 6

REFERENCE WELLPATH IDENTIFICATION			
Operator	KERR-MCGEE OIL & GAS ONSHORE LP	Slot	SLOT#10 BURKHARDT 15N-3HZ (420'FNL & 1950'FEL, SEC.03)
Area	COLORADO	Well	BURKHARDT 15N-3HZ
Field	WELD COUNTY (KERR MCGEE)	Wellbore	BURKHARDT 15N-3HZ AWB
Facility	SEC.03-T1N-R66W		

WELLPATH COMMENTS				
MD [ft]	Inclination [°]	Azimuth [°]	TVD [ft]	Comment
86.00	0.400	177.800	86.00	BEGIN MWD SURVEYS
1606.00	0.600	179.000	1605.97	TIE-INTO MWD SURVEYS
1702.00	0.500	166.300	1701.96	BEGIN BHI MWD+IFR SURVEYS
7713.00	90.377	182.463	7326.58	7" CASING POINT
11728.00	91.910	180.160	7332.18	LAST BHI MWD+IFR SURVEYS
11782.00	91.910	180.160	7330.38	PROJECTION TO BIT