

# **EXTRACTION OIL & GAS**

**WELD COUNTY, COLORADO (NAD 83)**

**NW NE SEC. 5 T5N R65W 6th P.M.**

**DT-HABITAT C4-5-6**

**ORIGINAL WELLBORE**

**17 November, 2014**

**Plan: PROPOSAL #2**

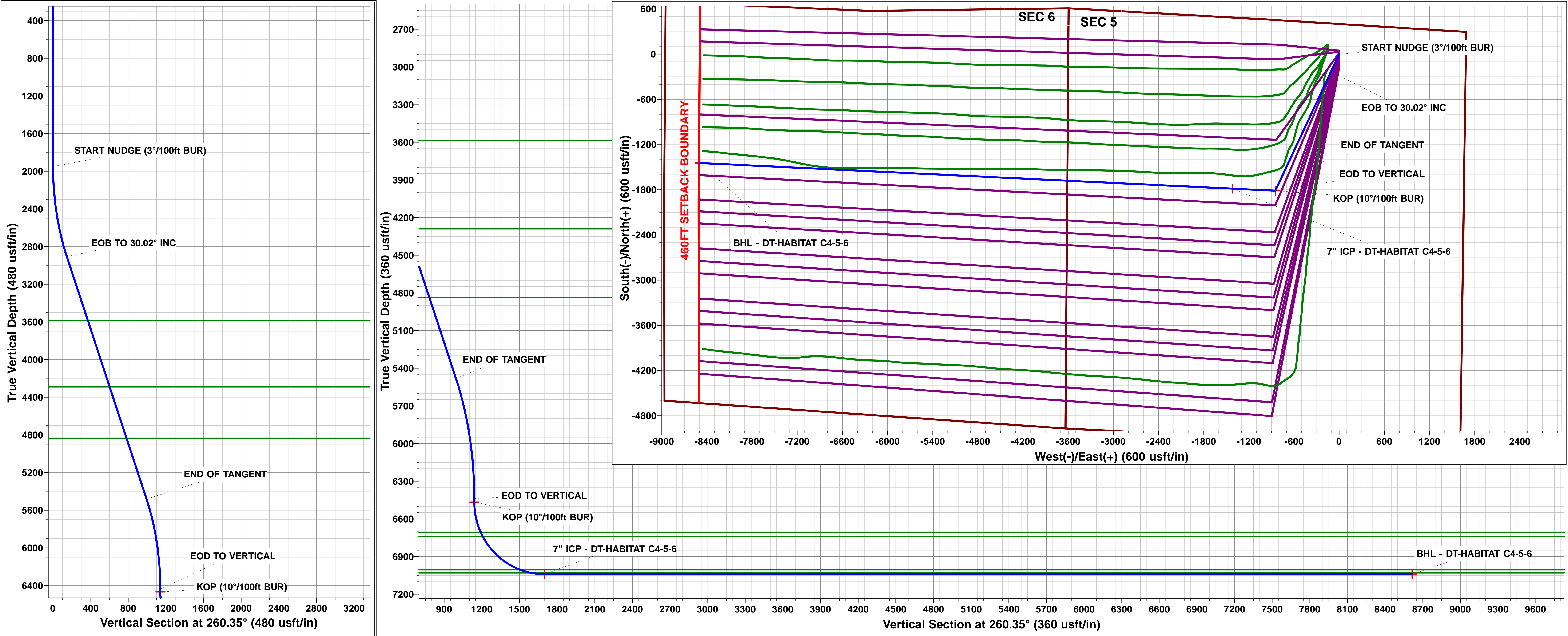
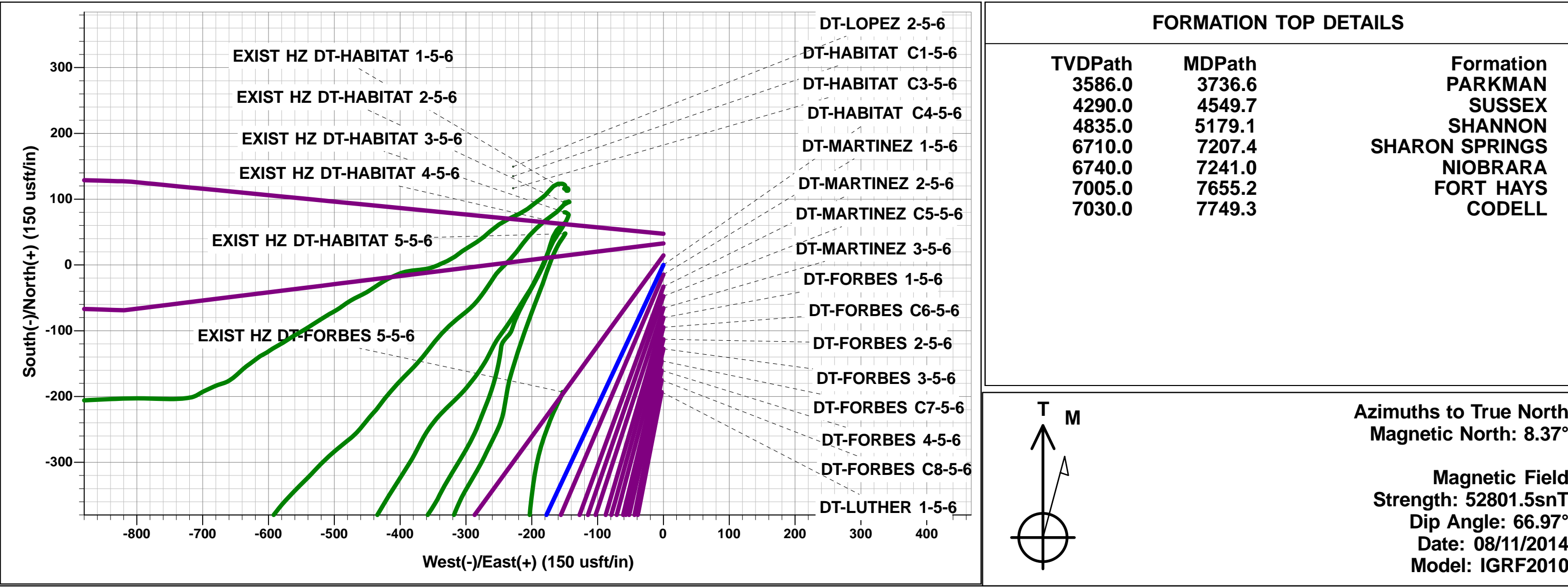




Project: WELD COUNTY, COLORADO (NAD 83)  
Site: NW NE SEC. 5 T5N R65W 6th P.M.  
Well: DT-HABITAT C4-5-6  
Wellbore: ORIGINAL WELLBORE  
Design: PROPOSAL #2

ANNOTATIONS									
TVD	MD	Inc	Azi	+N/-S	+E/-W	Vsect	Dep	Annotation	
1950.0	1950.0	0.00	0.00	0.0	0.0	0.0	0.0	START NUDGE (3°/100ft BUR)	
2905.5	2950.7	30.02	205.06	-232.1	-108.5	145.9	256.2	EOB TO 30.02° INC	
5481.5	5925.8	30.02	205.06	-1580.5	-739.0	993.6	1744.7	END OF TANGENT	
6437.0	6926.5	0.00	0.00	-1812.6	-847.5	1139.5	2000.9	EOD TO VERTICAL	
6467.0	6956.5	0.00	0.00	-1812.6	-847.5	1139.5	2000.9	KOP (10°/100ft BUR)	
7040.0	7856.5	90.00	272.75	-1785.1	-1419.8	1699.1	2573.9	7" ICP - DT-HABITAT C4-5-6	
7040.0	14938.6	90.00	272.76	-1444.9	-8493.7	8615.7	9656.0	BHL - DT-HABITAT C4-5-6	

WELLBORE TARGET DETAILS (LAT/LONG)					
Name	TVD	+N/-S	+E/-W	Latitude	Longitude
KOP - DT-HABITAT C4-5-6	6467.0	-1812.6	-847.5	40.430425	-104.686774
7" ICP - DT-HABITAT C4-5-6	7040.0	-1785.1	-1419.8	40.430500	-104.688830
BHL - DT-HABITAT C4-5-6	7040.0	-1444.9	-8493.7	40.431430	-104.714240



# Planning Report



<b>Database:</b>	EDM 5000.1 Single User Db	<b>Local Co-ordinate Reference:</b>	Well DT-HABITAT C4-5-6
<b>Company:</b>	EXTRACTION OIL & GAS	<b>TVD Reference:</b>	KB-EST @ 4657.0usft (SAV 802)
<b>Project:</b>	WELD COUNTY, COLORADO (NAD 83)	<b>MD Reference:</b>	KB-EST @ 4657.0usft (SAV 802)
<b>Site:</b>	NW NE SEC. 5 T5N R65W 6th P.M.	<b>North Reference:</b>	True
<b>Well:</b>	DT-HABITAT C4-5-6	<b>Survey Calculation Method:</b>	Minimum Curvature
<b>Wellbore:</b>	ORIGINAL WELLBORE		
<b>Design:</b>	PROPOSAL #2		

<b>Project</b>	WELD COUNTY, COLORADO (NAD 83)		
<b>Map System:</b>	US State Plane 1983	<b>System Datum:</b>	Mean Sea Level
<b>Geo Datum:</b>	North American Datum 1983		
<b>Map Zone:</b>	Colorado Northern Zone		Using geodetic scale factor

Site		NW NE SEC. 5 T5N R65W 6th P.M.			
Site Position:		Northing:	1,402,409.16 usft	Latitude:	40.435150
From:	Lat/Long	Easting:	3,226,987.53 usft	Longitude:	-104.684560
Position Uncertainty:	0.0 usft	Slot Radius:	1.10000 ft	Grid Convergence:	0.53 °

Well	DT-HABITAT C4-5-6					
Well Position	+N/-S	91.1 usft	Northing:	1,402,502.34 usft	Latitude:	40.435400
	+E/-W	231.1 usft	Easting:	3,227,217.73 usft	Longitude:	-104.683730
Position Uncertainty		0.0 usft	Wellhead Elevation:	usft	Ground Level:	4,641.7 usft

<b>Wellbore</b>	ORIGINAL WELLBORE				
<b>Magnetics</b>	<b>Model Name</b>	<b>Sample Date</b>	<b>Declination (°)</b>	<b>Dip Angle (°)</b>	<b>Field Strength (nT)</b>
	IGRF2010	08/11/2014	8.37	66.97	52,801

<b>Design</b>	PROPOSAL #2			
<b>Audit Notes:</b>				
<b>Version:</b>	<b>Phase:</b>	PROTOTYPE	<b>Tie On Depth:</b>	0.0
<b>Vertical Section:</b>	<b>Depth From (TVD) (usft)</b>	<b>+N/-S (usft)</b>	<b>+E/-W (usft)</b>	<b>Direction (°)</b>
	0.0	0.0	0.0	260.35

<b>Plan Sections</b>											
MD (usft)	Inc (°)	Azi (°)	Vertical Depth	SS (usft)	+N/-S (usft)	+E/-W (usft)	Dogleg Rate (°/100usf)	Build Rate (°/100usf)	Turn Rate (°/100usf)	TFO (°)	Target
0.0	0.00	0.00	0.0	-4,657.0	0.0	0.0	0.00	0.00	0.00	0.00	
1,950.0	0.00	0.00	1,950.0	-2,707.0	0.0	0.0	0.00	0.00	0.00	0.00	
2,950.7	30.02	205.06	2,905.5	-1,751.5	-232.1	-108.5	3.00	3.00	0.00	205.06	
5,925.8	30.02	205.06	5,481.5	824.5	-1,580.5	-739.0	0.00	0.00	0.00	0.00	
6,926.5	0.00	0.00	6,437.0	1,780.0	-1,812.6	-847.5	3.00	-3.00	0.00	180.00	
6,956.5	0.00	0.00	6,467.0	1,810.0	-1,812.6	-847.5	0.00	0.00	0.00	0.00	KOP - DT-HABITA1
7,856.5	90.00	272.75	7,040.0	2,383.0	-1,785.1	-1,419.8	10.00	10.00	-9.69	272.75	7" ICP - DT-HABIT/
14,938.6	90.00	272.76	7,040.0	2,383.0	-1,444.9	-8,493.7	0.00	0.00	0.00	76.69	BHL - DT-HABITAT

## Planning Report



<b>Database:</b>	EDM 5000.1 Single User Db	<b>Local Co-ordinate Reference:</b>	Well DT-HABITAT C4-5-6
<b>Company:</b>	EXTRACTION OIL & GAS	<b>TVD Reference:</b>	KB-EST @ 4657.0usft (SAV 802)
<b>Project:</b>	WELD COUNTY, COLORADO (NAD 83)	<b>MD Reference:</b>	KB-EST @ 4657.0usft (SAV 802)
<b>Site:</b>	NW NE SEC. 5 T5N R65W 6th P.M.	<b>North Reference:</b>	True
<b>Well:</b>	DT-HABITAT C4-5-6	<b>Survey Calculation Method:</b>	Minimum Curvature
<b>Wellbore:</b>	ORIGINAL WELLBORE		
<b>Design:</b>	PROPOSAL #2		

## Planned Survey

MD (usft)	Inc (°)	Azi (°)	TVD (usft)	SS (usft)	+N/-S (usft)	+E/-W (usft)	Vertical Section (usft)	Dogleg Rate (°/100usft)	Build Rate (°/100usft)	Turn Rate (°/100usft)
0.0	0.00	0.00	0.0	4,657.00	0.0	0.0	0.0	0.00	0.00	0.00
100.0	0.00	0.00	100.0	4,557.00	0.0	0.0	0.0	0.00	0.00	0.00
200.0	0.00	0.00	200.0	4,457.00	0.0	0.0	0.0	0.00	0.00	0.00
300.0	0.00	0.00	300.0	4,357.00	0.0	0.0	0.0	0.00	0.00	0.00
400.0	0.00	0.00	400.0	4,257.00	0.0	0.0	0.0	0.00	0.00	0.00
500.0	0.00	0.00	500.0	4,157.00	0.0	0.0	0.0	0.00	0.00	0.00
600.0	0.00	0.00	600.0	4,057.00	0.0	0.0	0.0	0.00	0.00	0.00
700.0	0.00	0.00	700.0	3,957.00	0.0	0.0	0.0	0.00	0.00	0.00
800.0	0.00	0.00	800.0	3,857.00	0.0	0.0	0.0	0.00	0.00	0.00
900.0	0.00	0.00	900.0	3,757.00	0.0	0.0	0.0	0.00	0.00	0.00
1,000.0	0.00	0.00	1,000.0	3,657.00	0.0	0.0	0.0	0.00	0.00	0.00
1,100.0	0.00	0.00	1,100.0	3,557.00	0.0	0.0	0.0	0.00	0.00	0.00
1,200.0	0.00	0.00	1,200.0	3,457.00	0.0	0.0	0.0	0.00	0.00	0.00
1,300.0	0.00	0.00	1,300.0	3,357.00	0.0	0.0	0.0	0.00	0.00	0.00
1,400.0	0.00	0.00	1,400.0	3,257.00	0.0	0.0	0.0	0.00	0.00	0.00
1,500.0	0.00	0.00	1,500.0	3,157.00	0.0	0.0	0.0	0.00	0.00	0.00
1,600.0	0.00	0.00	1,600.0	3,057.00	0.0	0.0	0.0	0.00	0.00	0.00
1,700.0	0.00	0.00	1,700.0	2,957.00	0.0	0.0	0.0	0.00	0.00	0.00
1,800.0	0.00	0.00	1,800.0	2,857.00	0.0	0.0	0.0	0.00	0.00	0.00
1,900.0	0.00	0.00	1,900.0	2,757.00	0.0	0.0	0.0	0.00	0.00	0.00
<b>START NUDGE (3°/100ft BUR)</b>										
1,950.0	0.00	0.00	1,950.0	2,707.00	0.0	0.0	0.0	0.00	0.00	0.00
2,000.0	1.50	205.06	2,000.0	2,657.01	-0.6	-0.3	0.4	3.00	3.00	0.00
2,100.0	4.50	205.06	2,099.8	2,557.15	-5.3	-2.5	3.4	3.00	3.00	0.00
2,200.0	7.50	205.06	2,199.3	2,457.71	-14.8	-6.9	9.3	3.00	3.00	0.00
2,300.0	10.50	205.06	2,298.0	2,358.96	-29.0	-13.5	18.2	3.00	3.00	0.00
2,400.0	13.50	205.06	2,395.8	2,261.15	-47.8	-22.4	30.1	3.00	3.00	0.00
2,500.0	16.50	205.06	2,492.4	2,164.57	-71.2	-33.3	44.8	3.00	3.00	0.00
2,600.0	19.50	205.06	2,587.5	2,069.48	-99.2	-46.4	62.4	3.00	3.00	0.00
2,700.0	22.50	205.06	2,680.9	1,976.13	-131.7	-61.6	82.8	3.00	3.00	0.00
2,800.0	25.50	205.06	2,772.2	1,884.78	-168.5	-78.8	105.9	3.00	3.00	0.00
2,900.0	28.50	205.06	2,861.3	1,795.69	-209.7	-98.0	131.8	3.00	3.00	0.00
<b>EOB TO 30.02° INC</b>										
2,950.7	30.02	205.06	2,905.5	1,751.46	-232.1	-108.5	145.9	3.00	3.00	0.00
3,000.0	30.02	205.06	2,948.2	1,708.78	-254.4	-119.0	160.0	0.00	0.00	0.00
3,100.0	30.02	205.06	3,034.8	1,622.19	-299.8	-140.2	188.4	0.00	0.00	0.00
3,200.0	30.02	205.06	3,121.4	1,535.61	-345.1	-161.4	216.9	0.00	0.00	0.00
3,300.0	30.02	205.06	3,208.0	1,449.03	-390.4	-182.5	245.4	0.00	0.00	0.00
3,400.0	30.02	205.06	3,294.6	1,362.44	-435.7	-203.7	273.9	0.00	0.00	0.00
3,500.0	30.02	205.06	3,381.1	1,275.86	-481.1	-224.9	302.4	0.00	0.00	0.00
3,600.0	30.02	205.06	3,467.7	1,189.27	-526.4	-246.1	330.9	0.00	0.00	0.00
3,700.0	30.02	205.06	3,554.3	1,102.69	-571.7	-267.3	359.4	0.00	0.00	0.00
<b>PARKMAN</b>										
3,736.6	30.02	205.06	3,586.0	1,071.00	-588.3	-275.1	369.8	0.00	0.00	0.00
3,800.0	30.02	205.06	3,640.9	1,016.11	-617.0	-288.5	387.9	0.00	0.00	0.00
3,900.0	30.02	205.06	3,727.5	929.52	-662.4	-309.7	416.4	0.00	0.00	0.00
4,000.0	30.02	205.06	3,814.1	842.94	-707.7	-330.9	444.9	0.00	0.00	0.00
4,100.0	30.02	205.06	3,900.6	756.35	-753.0	-352.1	473.4	0.00	0.00	0.00
4,200.0	30.02	205.06	3,987.2	669.77	-798.3	-373.3	501.9	0.00	0.00	0.00
4,300.0	30.02	205.06	4,073.8	583.18	-843.6	-394.5	530.3	0.00	0.00	0.00
4,400.0	30.02	205.06	4,160.4	496.60	-889.0	-415.6	558.8	0.00	0.00	0.00
4,500.0	30.02	205.06	4,247.0	410.02	-934.3	-436.8	587.3	0.00	0.00	0.00
<b>SUSSEX</b>										
4,549.7	30.02	205.06	4,290.0	367.00	-956.8	-447.4	601.5	0.00	0.00	0.00



## Planning Report



<b>Database:</b>	EDM 5000.1 Single User Db	<b>Local Co-ordinate Reference:</b>	Well DT-HABITAT C4-5-6
<b>Company:</b>	EXTRACTION OIL & GAS	<b>TVD Reference:</b>	KB-EST @ 4657.0usft (SAV 802)
<b>Project:</b>	WELD COUNTY, COLORADO (NAD 83)	<b>MD Reference:</b>	KB-EST @ 4657.0usft (SAV 802)
<b>Site:</b>	NW NE SEC. 5 T5N R65W 6th P.M.	<b>North Reference:</b>	True
<b>Well:</b>	DT-HABITAT C4-5-6	<b>Survey Calculation Method:</b>	Minimum Curvature
<b>Wellbore:</b>	ORIGINAL WELLBORE		
<b>Design:</b>	PROPOSAL #2		

## Planned Survey

MD (usft)	Inc (°)	Azi (°)	TVD (usft)	SS (usft)	+N/-S (usft)	+E/-W (usft)	Vertical Section (usft)	Dogleg Rate (°/100usft)	Build Rate (°/100usft)	Turn Rate (°/100usft)
4,600.0	30.02	205.06	4,333.6	323.43	-979.6	-458.0	615.8	0.00	0.00	0.00
4,700.0	30.02	205.06	4,420.2	236.85	-1,024.9	-479.2	644.3	0.00	0.00	0.00
4,800.0	30.02	205.06	4,506.7	150.26	-1,070.3	-500.4	672.8	0.00	0.00	0.00
4,900.0	30.02	205.06	4,593.3	63.68	-1,115.6	-521.6	701.3	0.00	0.00	0.00
5,000.0	30.02	205.06	4,679.9	-22.90	-1,160.9	-542.8	729.8	0.00	0.00	0.00
5,100.0	30.02	205.06	4,766.5	-109.49	-1,206.2	-564.0	758.3	0.00	0.00	0.00
<b>SHANNON</b>										
<b>5,179.1</b>	<b>30.02</b>	<b>205.06</b>	<b>4,835.0</b>	<b>-178.00</b>	<b>-1,242.1</b>	<b>-580.7</b>	<b>780.8</b>	<b>0.00</b>	<b>0.00</b>	<b>0.00</b>
5,200.0	30.02	205.06	4,853.1	-196.07	-1,251.5	-585.2	786.8	0.00	0.00	0.00
5,300.0	30.02	205.06	4,939.7	-282.66	-1,296.9	-606.4	815.3	0.00	0.00	0.00
5,400.0	30.02	205.06	5,026.2	-369.24	-1,342.2	-627.5	843.7	0.00	0.00	0.00
5,500.0	30.02	205.06	5,112.8	-455.82	-1,387.5	-648.7	872.2	0.00	0.00	0.00
5,600.0	30.02	205.06	5,199.4	-542.41	-1,432.8	-669.9	900.7	0.00	0.00	0.00
5,700.0	30.02	205.06	5,286.0	-628.99	-1,478.2	-691.1	929.2	0.00	0.00	0.00
5,800.0	30.02	205.06	5,372.6	-715.58	-1,523.5	-712.3	957.7	0.00	0.00	0.00
5,900.0	30.02	205.06	5,459.2	-802.16	-1,568.8	-733.5	986.2	0.00	0.00	0.00
<b>END OF TANGENT</b>										
<b>5,925.8</b>	<b>30.02</b>	<b>205.06</b>	<b>5,481.5</b>	<b>-824.50</b>	<b>-1,580.5</b>	<b>-739.0</b>	<b>993.6</b>	<b>0.00</b>	<b>0.00</b>	<b>0.00</b>
6,000.0	27.79	205.06	5,546.5	-889.45	-1,613.0	-754.2	1,014.0	3.00	-3.00	0.00
6,100.0	24.79	205.06	5,636.1	-979.09	-1,653.1	-772.9	1,039.2	3.00	-3.00	0.00
6,200.0	21.79	205.06	5,727.9	-1,070.93	-1,688.9	-789.7	1,061.7	3.00	-3.00	0.00
6,300.0	18.79	205.06	5,821.7	-1,164.71	-1,720.3	-804.4	1,081.5	3.00	-3.00	0.00
6,400.0	15.79	205.06	5,917.2	-1,260.18	-1,747.3	-816.9	1,098.4	3.00	-3.00	0.00
6,500.0	12.79	205.06	6,014.1	-1,357.08	-1,769.6	-827.4	1,112.5	3.00	-3.00	0.00
6,600.0	9.79	205.06	6,112.1	-1,455.13	-1,787.4	-835.7	1,123.6	3.00	-3.00	0.00
6,700.0	6.79	205.06	6,211.1	-1,554.07	-1,800.4	-841.8	1,131.8	3.00	-3.00	0.00
6,800.0	3.79	205.06	6,310.6	-1,653.63	-1,808.8	-845.7	1,137.1	3.00	-3.00	0.00
6,900.0	0.79	205.06	6,410.5	-1,753.54	-1,812.4	-847.4	1,139.3	3.00	-3.00	0.00
<b>EOD TO VERTICAL</b>										
<b>6,926.5</b>	<b>0.00</b>	<b>0.00</b>	<b>6,437.0</b>	<b>-1,780.04</b>	<b>-1,812.6</b>	<b>-847.5</b>	<b>1,139.5</b>	<b>3.00</b>	<b>-3.00</b>	<b>0.00</b>
<b>KOP (10°/100ft BUR)</b>										
<b>6,956.5</b>	<b>0.00</b>	<b>0.00</b>	<b>6,467.0</b>	<b>-1,810.04</b>	<b>-1,812.6</b>	<b>-847.5</b>	<b>1,139.5</b>	<b>0.00</b>	<b>0.00</b>	<b>0.00</b>
7,000.0	4.35	272.75	6,510.5	-1,853.50	-1,812.5	-849.1	1,141.1	10.01	10.01	0.00
7,100.0	14.35	272.75	6,609.0	-1,952.04	-1,811.7	-865.3	1,156.9	10.00	10.00	0.00
7,200.0	24.35	272.75	6,703.3	-2,046.27	-1,810.1	-898.4	1,189.2	10.00	10.00	0.00
<b>SHARON SPRINGS</b>										
<b>7,207.4</b>	<b>25.09</b>	<b>272.75</b>	<b>6,710.0</b>	<b>-2,053.00</b>	<b>-1,810.0</b>	<b>-901.5</b>	<b>1,192.3</b>	<b>10.00</b>	<b>10.00</b>	<b>0.00</b>
<b>NIOBRARA</b>										
<b>7,241.0</b>	<b>28.45</b>	<b>272.75</b>	<b>6,740.0</b>	<b>-2,083.00</b>	<b>-1,809.3</b>	<b>-916.6</b>	<b>1,207.1</b>	<b>10.00</b>	<b>10.00</b>	<b>0.00</b>
7,300.0	34.35	272.75	6,790.3	-2,133.33	-1,807.8	-947.3	1,237.1	10.00	10.00	0.00
7,400.0	44.35	272.75	6,867.6	-2,210.56	-1,804.8	-1,010.6	1,298.9	10.00	10.00	0.00
7,500.0	54.35	272.75	6,932.6	-2,275.62	-1,801.1	-1,086.2	1,372.9	10.00	10.00	0.00
7,600.0	64.35	272.75	6,983.5	-2,326.53	-1,797.0	-1,172.1	1,456.8	10.00	10.00	0.00
<b>FORT HAYS</b>										
<b>7,655.2</b>	<b>69.87</b>	<b>272.75</b>	<b>7,005.0</b>	<b>-2,348.00</b>	<b>-1,794.5</b>	<b>-1,222.9</b>	<b>1,506.5</b>	<b>10.00</b>	<b>10.00</b>	<b>0.00</b>
7,700.0	74.35	272.75	7,018.8	-2,361.75	-1,792.5	-1,265.4	1,548.1	10.00	10.00	0.00
<b>CODELL</b>										
<b>7,749.3</b>	<b>79.28</b>	<b>272.75</b>	<b>7,030.0</b>	<b>-2,373.00</b>	<b>-1,790.2</b>	<b>-1,313.4</b>	<b>1,595.0</b>	<b>10.00</b>	<b>10.00</b>	<b>0.00</b>
7,800.0	84.35	272.75	7,037.2	-2,380.21	-1,787.8	-1,363.5	1,644.0	10.00	10.00	0.00
<b>7" ICP - DT-HABITAT C4-5-6</b>										
<b>7,856.5</b>	<b>90.00</b>	<b>272.75</b>	<b>7,040.0</b>	<b>-2,383.00</b>	<b>-1,785.1</b>	<b>-1,419.8</b>	<b>1,699.1</b>	<b>10.00</b>	<b>10.00</b>	<b>0.00</b>
7,900.0	90.00	272.75	7,040.0	-2,383.00	-1,783.0	-1,463.2	1,741.5	0.00	0.00	0.00
8,000.0	90.00	272.75	7,040.0	-2,383.00	-1,778.2	-1,563.1	1,839.2	0.00	0.00	0.00

# Planning Report



<b>Database:</b>	EDM 5000.1 Single User Db	<b>Local Co-ordinate Reference:</b>	Well DT-HABITAT C4-5-6
<b>Company:</b>	EXTRACTION OIL & GAS	<b>TVD Reference:</b>	KB-EST @ 4657.0usft (SAV 802)
<b>Project:</b>	WELD COUNTY, COLORADO (NAD 83)	<b>MD Reference:</b>	KB-EST @ 4657.0usft (SAV 802)
<b>Site:</b>	NW NE SEC. 5 T5N R65W 6th P.M.	<b>North Reference:</b>	True
<b>Well:</b>	DT-HABITAT C4-5-6	<b>Survey Calculation Method:</b>	Minimum Curvature
<b>Wellbore:</b>	ORIGINAL WELLBORE		
<b>Design:</b>	PROPOSAL #2		

Planned Survey										
MD (usft)	Inc (°)	Azi (°)	TVD (usft)	SS (usft)	+N/-S (usft)	+E/-W (usft)	Vertical Section (usft)	Dogleg Rate (°/100usft)	Build Rate (°/100usft)	Turn Rate (°/100usft)
8,100.0	90.00	272.75	7,040.0	-2,383.00	-1,773.4	-1,663.0	1,936.9	0.00	0.00	0.00
8,200.0	90.00	272.75	7,040.0	-2,383.00	-1,768.6	-1,762.9	2,034.5	0.00	0.00	0.00
8,300.0	90.00	272.75	7,040.0	-2,383.00	-1,763.8	-1,862.8	2,132.2	0.00	0.00	0.00
8,400.0	90.00	272.75	7,040.0	-2,383.01	-1,759.0	-1,962.7	2,229.9	0.00	0.00	0.00
8,500.0	90.00	272.75	7,040.0	-2,383.01	-1,754.2	-2,062.6	2,327.5	0.00	0.00	0.00
8,600.0	90.00	272.75	7,040.0	-2,383.01	-1,749.4	-2,162.4	2,425.2	0.00	0.00	0.00
8,700.0	90.00	272.75	7,040.0	-2,383.01	-1,744.6	-2,262.3	2,522.9	0.00	0.00	0.00
8,800.0	90.00	272.75	7,040.0	-2,383.01	-1,739.8	-2,362.2	2,620.5	0.00	0.00	0.00
8,900.0	90.00	272.75	7,040.0	-2,383.01	-1,735.0	-2,462.1	2,718.2	0.00	0.00	0.00
9,000.0	90.00	272.75	7,040.0	-2,383.01	-1,730.2	-2,562.0	2,815.9	0.00	0.00	0.00
9,100.0	90.00	272.75	7,040.0	-2,383.01	-1,725.4	-2,661.9	2,913.5	0.00	0.00	0.00
9,200.0	90.00	272.75	7,040.0	-2,383.01	-1,720.6	-2,761.8	3,011.2	0.00	0.00	0.00
9,300.0	90.00	272.75	7,040.0	-2,383.01	-1,715.8	-2,861.6	3,108.8	0.00	0.00	0.00
9,400.0	90.00	272.75	7,040.0	-2,383.01	-1,711.0	-2,961.5	3,206.5	0.00	0.00	0.00
9,500.0	90.00	272.75	7,040.0	-2,383.01	-1,706.2	-3,061.4	3,304.2	0.00	0.00	0.00
9,600.0	90.00	272.75	7,040.0	-2,383.02	-1,701.4	-3,161.3	3,401.8	0.00	0.00	0.00
9,700.0	90.00	272.75	7,040.0	-2,383.02	-1,696.6	-3,261.2	3,499.5	0.00	0.00	0.00
9,800.0	90.00	272.75	7,040.0	-2,383.02	-1,691.8	-3,361.1	3,597.2	0.00	0.00	0.00
9,900.0	90.00	272.75	7,040.0	-2,383.02	-1,687.0	-3,460.9	3,694.8	0.00	0.00	0.00
10,000.0	90.00	272.75	7,040.0	-2,383.02	-1,682.2	-3,560.8	3,792.5	0.00	0.00	0.00
10,100.0	90.00	272.75	7,040.0	-2,383.02	-1,677.4	-3,660.7	3,890.2	0.00	0.00	0.00
10,200.0	90.00	272.75	7,040.0	-2,383.02	-1,672.6	-3,760.6	3,987.8	0.00	0.00	0.00
10,300.0	90.00	272.75	7,040.0	-2,383.02	-1,667.8	-3,860.5	4,085.5	0.00	0.00	0.00
10,400.0	90.00	272.75	7,040.0	-2,383.02	-1,663.0	-3,960.4	4,183.2	0.00	0.00	0.00
10,500.0	90.00	272.75	7,040.0	-2,383.02	-1,658.2	-4,060.3	4,280.8	0.00	0.00	0.00
10,600.0	90.00	272.75	7,040.0	-2,383.02	-1,653.4	-4,160.1	4,378.5	0.00	0.00	0.00
10,700.0	90.00	272.75	7,040.0	-2,383.02	-1,648.6	-4,260.0	4,476.2	0.00	0.00	0.00
10,800.0	90.00	272.75	7,040.0	-2,383.02	-1,643.8	-4,359.9	4,573.8	0.00	0.00	0.00
10,900.0	90.00	272.75	7,040.0	-2,383.02	-1,639.0	-4,459.8	4,671.5	0.00	0.00	0.00
11,000.0	90.00	272.75	7,040.0	-2,383.02	-1,634.2	-4,559.7	4,769.1	0.00	0.00	0.00
11,100.0	90.00	272.75	7,040.0	-2,383.02	-1,629.4	-4,659.6	4,866.8	0.00	0.00	0.00
11,200.0	90.00	272.75	7,040.0	-2,383.02	-1,624.5	-4,759.4	4,964.5	0.00	0.00	0.00
11,300.0	90.00	272.75	7,040.0	-2,383.02	-1,619.7	-4,859.3	5,062.1	0.00	0.00	0.00
11,400.0	90.00	272.75	7,040.0	-2,383.02	-1,614.9	-4,959.2	5,159.8	0.00	0.00	0.00
11,500.0	90.00	272.75	7,040.0	-2,383.02	-1,610.1	-5,059.1	5,257.5	0.00	0.00	0.00
11,600.0	90.00	272.75	7,040.0	-2,383.02	-1,605.3	-5,159.0	5,355.1	0.00	0.00	0.00
11,700.0	90.00	272.75	7,040.0	-2,383.02	-1,600.5	-5,258.9	5,452.8	0.00	0.00	0.00
11,800.0	90.00	272.75	7,040.0	-2,383.02	-1,595.7	-5,358.8	5,550.5	0.00	0.00	0.00
11,900.0	90.00	272.75	7,040.0	-2,383.02	-1,590.9	-5,458.6	5,648.1	0.00	0.00	0.00
12,000.0	90.00	272.75	7,040.0	-2,383.02	-1,586.1	-5,558.5	5,745.8	0.00	0.00	0.00
12,100.0	90.00	272.75	7,040.0	-2,383.02	-1,581.3	-5,658.4	5,843.5	0.00	0.00	0.00
12,200.0	90.00	272.75	7,040.0	-2,383.02	-1,576.5	-5,758.3	5,941.1	0.00	0.00	0.00
12,300.0	90.00	272.75	7,040.0	-2,383.02	-1,571.7	-5,858.2	6,038.8	0.00	0.00	0.00
12,400.0	90.00	272.75	7,040.0	-2,383.02	-1,566.9	-5,958.1	6,136.4	0.00	0.00	0.00
12,500.0	90.00	272.75	7,040.0	-2,383.02	-1,562.1	-6,057.9	6,234.1	0.00	0.00	0.00
12,600.0	90.00	272.75	7,040.0	-2,383.02	-1,557.3	-6,157.8	6,331.8	0.00	0.00	0.00
12,700.0	90.00	272.75	7,040.0	-2,383.02	-1,552.5	-6,257.7	6,429.4	0.00	0.00	0.00
12,800.0	90.00	272.75	7,040.0	-2,383.02	-1,547.7	-6,357.6	6,527.1	0.00	0.00	0.00
12,900.0	90.00	272.75	7,040.0	-2,383.02	-1,542.9	-6,457.5	6,624.8	0.00	0.00	0.00
13,000.0	90.00	272.75	7,040.0	-2,383.02	-1,538.1	-6,557.4	6,722.4	0.00	0.00	0.00
13,100.0	90.00	272.75	7,040.0	-2,383.02	-1,533.3	-6,657.2	6,820.1	0.00	0.00	0.00
13,200.0	90.00	272.76	7,040.0	-2,383.02	-1,528.4	-6,757.1	6,917.8	0.00	0.00	0.00
13,300.0	90.00	272.76	7,040.0	-2,383.01	-1,523.6	-6,857.0	7,015.4	0.00	0.00	0.00
13,400.0	90.00	272.76	7,040.0	-2,383.01	-1,518.8	-6,956.9	7,113.1	0.00	0.00	0.00

<b>Database:</b>	EDM 5000.1 Single User Db	<b>Local Co-ordinate Reference:</b>	Well DT-HABITAT C4-5-6
<b>Company:</b>	EXTRACTION OIL & GAS	<b>TVD Reference:</b>	KB-EST @ 4657.0usft (SAV 802)
<b>Project:</b>	WELD COUNTY, COLORADO (NAD 83)	<b>MD Reference:</b>	KB-EST @ 4657.0usft (SAV 802)
<b>Site:</b>	NW NE SEC. 5 T5N R65W 6th P.M.	<b>North Reference:</b>	True
<b>Well:</b>	DT-HABITAT C4-5-6	<b>Survey Calculation Method:</b>	Minimum Curvature
<b>Wellbore:</b>	ORIGINAL WELLBORE		
<b>Design:</b>	PROPOSAL #2		

## Planned Survey

MD (usft)	Inc (°)	Azi (°)	TVD (usft)	SS (usft)	+N/-S (usft)	+E/-W (usft)	Vertical Section (usft)	Dogleg Rate (°/100usft)	Build Rate (°/100usft)	Turn Rate (°/100usft)
13,500.0	90.00	272.76	7,040.0	-2,383.01	-1,514.0	-7,056.8	7,210.7	0.00	0.00	0.00
13,600.0	90.00	272.76	7,040.0	-2,383.01	-1,509.2	-7,156.7	7,308.4	0.00	0.00	0.00
13,700.0	90.00	272.76	7,040.0	-2,383.01	-1,504.4	-7,256.6	7,406.1	0.00	0.00	0.00
13,800.0	90.00	272.76	7,040.0	-2,383.01	-1,499.6	-7,356.4	7,503.7	0.00	0.00	0.00
13,900.0	90.00	272.76	7,040.0	-2,383.01	-1,494.8	-7,456.3	7,601.4	0.00	0.00	0.00
14,000.0	90.00	272.76	7,040.0	-2,383.01	-1,490.0	-7,556.2	7,699.1	0.00	0.00	0.00
14,100.0	90.00	272.76	7,040.0	-2,383.01	-1,485.2	-7,656.1	7,796.7	0.00	0.00	0.00
14,200.0	90.00	272.76	7,040.0	-2,383.01	-1,480.4	-7,756.0	7,894.4	0.00	0.00	0.00
14,300.0	90.00	272.76	7,040.0	-2,383.01	-1,475.6	-7,855.9	7,992.1	0.00	0.00	0.00
14,400.0	90.00	272.76	7,040.0	-2,383.01	-1,470.8	-7,955.7	8,089.7	0.00	0.00	0.00
14,500.0	90.00	272.76	7,040.0	-2,383.00	-1,465.9	-8,055.6	8,187.4	0.00	0.00	0.00
14,600.0	90.00	272.76	7,040.0	-2,383.00	-1,461.1	-8,155.5	8,285.0	0.00	0.00	0.00
14,700.0	90.00	272.76	7,040.0	-2,383.00	-1,456.3	-8,255.4	8,382.7	0.00	0.00	0.00
14,800.0	90.00	272.76	7,040.0	-2,383.00	-1,451.5	-8,355.3	8,480.4	0.00	0.00	0.00
14,900.0	90.00	272.76	7,040.0	-2,383.00	-1,446.7	-8,455.2	8,578.0	0.00	0.00	0.00
<b>BHL - DT-HABITAT C4-5-6</b>										
<b>14,938.6</b>	<b>90.00</b>	<b>272.76</b>	<b>7,040.0</b>	<b>-2,383.00</b>	<b>-1,444.9</b>	<b>-8,493.7</b>	<b>8,615.7</b>	<b>0.00</b>	<b>0.00</b>	<b>0.00</b>

## Formations

MD (usft)	TVD (usft)	Name	Lithology	Dip (°)	Dip Direction (°)
3,736.6	3,586.0	PARKMAN			
4,549.7	4,290.0	SUSSEX			
5,179.1	4,835.0	SHANNON			
7,207.4	6,710.0	SHARON SPRINGS			
7,241.0	6,740.0	NIOBRARA			
7,655.2	7,005.0	FORT HAYS			
7,749.3	7,030.0	CODELL			

## Plan Annotations

MD (usft)	TVD (usft)	Local Coordinates		Comment
		+N/-S (usft)	+E/-W (usft)	
1,950.0	1,950.0	0.0	0.0	START NUDGE (3°/100ft BUR)
2,950.7	2,905.5	-232.1	-108.5	EOB TO 30.02° INC
5,925.8	5,481.5	-1,580.5	-739.0	END OF TANGENT
6,926.5	6,437.0	-1,812.6	-847.5	EOD TO VERTICAL
6,956.5	6,467.0	-1,812.6	-847.5	KOP (10°/100ft BUR)
7,856.5	7,040.0	-1,785.1	-1,419.8	7" ICP - DT-HABITAT C4-5-6
14,938.6	7,040.0	-1,444.9	-8,493.7	BHL - DT-HABITAT C4-5-6