

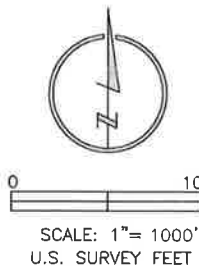
### LAND SURVEYOR'S CERTIFICATION

LAMP, RYNEARSON & ASSOCIATES, INC., OF FT. COLLINS, COLORADO HAS, IN ACCORDANCE WITH A REQUEST FROM DUSTIN DYK FOR EXTRACTION OIL AND GAS, DETERMINED THE SURFACE LOCATION OF THE WELL DESIGNATED AS DT-HABITAT C4-5-6 TO BE 398' FROM THE NORTH LINE AND 1684' FROM THE EAST LINE OF SECTION 5, TOWNSHIP 5 NORTH, RANGE 65 WEST OF THE 6TH P.M., WELD COUNTY, COLORADO.



FRANK A. KOHL  
 COLORADO PLS 37067

DATE OF SURVEY: 8/19/2010 (SECTION CONTROL)  
 DATE OF SURVEY: 10/13/2014 (WELL LOCATION)



### NOTES:

- DISTANCES ARE MEASURED PERPENDICULAR TO NEAREST SECTION LINE AND ARE SHOWN ON THE SAME SIDE OF THE SECTION LINE WHERE THE WELL IS LOCATED.
- THIS MAP DOES NOT REPRESENT A MONUMENTED BOUNDARY SURVEY. SIXTEENTH CORNER LOCATIONS ARE COMPUTED, UNLESS OTHERWISE NOTED.
- BOTTOM HOLE LOCATIONS AND HORIZONTAL COMPLETION ZONE PROVIDED BY OTHERS.

### BASIS OF BEARING:

THE NORTH LINE OF THE NORTHEAST QUARTER OF SECTION 5-T5N-R65W BEARS S85°52'57"E BETWEEN THE NORTH QUARTER CORNER OF SECTION 5 MONUMENTED WITH 3 1/4" A.C. IN R.B. STAMPED "PLS 28259" AND THE NORTHEAST CORNER OF SECTION 5 MONUMENTED WITH A 2 1/2" A.C. IN R.B. STAMPED "LS 17500" BASED ON THE COLORADO NORTH 0501 STATE PLANE COORDINATE SYSTEM.

ELEVATIONS ARE BASED ON NAVD 88, AS OBSERVED FROM GPS OBSERVATIONS



**LAMP RYNEARSON  
 & ASSOCIATES**

4715 Innovation Drive 970.226.0342 | P  
 Fort Collins, CO 80525 970.226.0879 | F  
 www.LRA-Inc.com

Proposed Well Location Exhibit  
 DT-Habitat C4-5-6  
 1 OF 2

drawn by

NDB

date

8/28/14

cogcc id

432599

project - task number

0211012.02-502

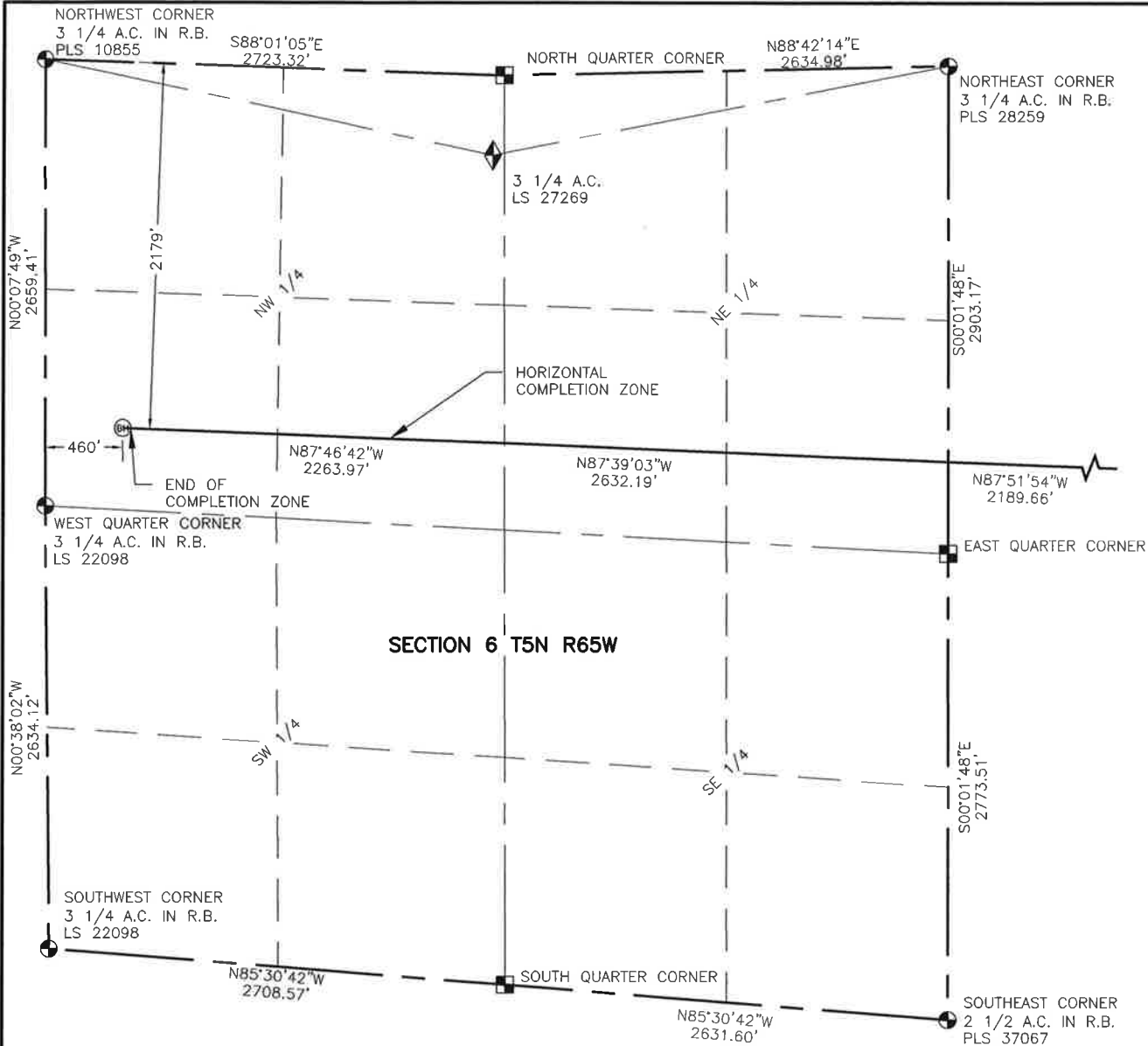
book and page

MRI02, 1

surface - location

NW/4 NE/4 SEC 5 T5N R65W

path\\filename P:\\_Engineering\0211012.02\DRAWINGS\EXHIBITS\0211012-02EXWPEC3.dwg



**LAMP RYNEARSON  
& ASSOCIATES**

4715 Innovation Drive 970.226.0342 | P  
Fort Collins, CO 80525 970.226.0879 | F  
www.LRA-Inc.com

Proposed Well Location Exhibit  
DT-Habitat C4-5-6  
2 OF 2

drawn by  
NDB

date  
8/28/14

cogcc id  
432599

project - task number  
0211012.02-502

book and page  
MRI02, 1

surface - location  
NW/4 NE/4 SEC 5 T5N R65W

path\filename P:\\_Engineering\0211012.02\DRAWINGS\EXHIBITS\0211012-02EXWPEC3A.dwg