

EXTRACTION OIL & GAS

WELD COUNTY, COLORADO (NAD 83)

NW NE SEC. 5 T5N R65W 6th P.M.

DT-MARTINEZ 1-5-6

ORIGINAL WELLBORE

17 November, 2014

Plan: PROPOSAL #2

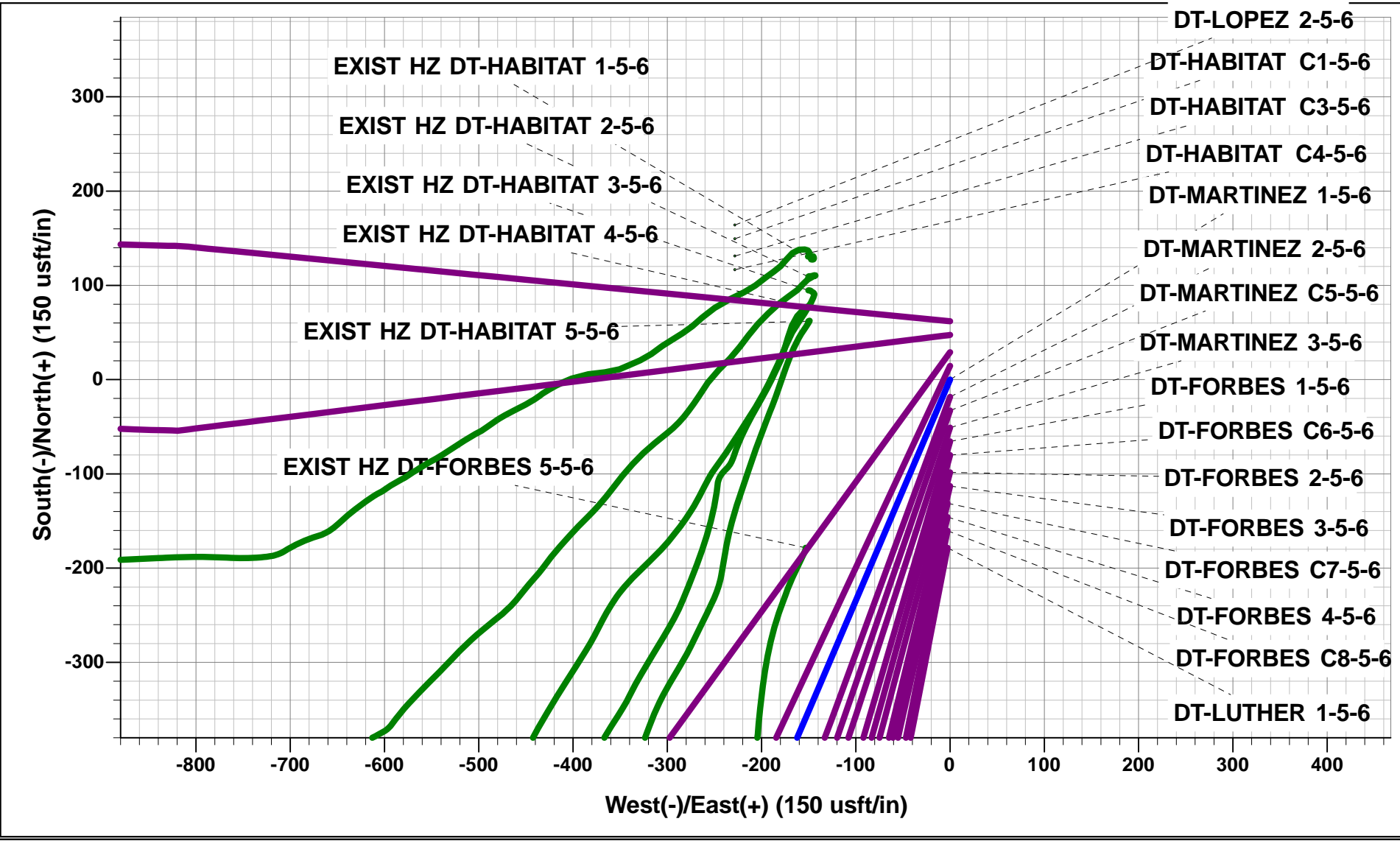




Project: WELD COUNTY, COLORADO (NAD 83)
Site: NW NE SEC. 5 T5N R65W 6th P.M.
Well: DT-MARTINEZ 1-5-6
Wellbore: ORIGINAL WELLBORE
Design: PROPOSAL #2

ANNOTATIONS									
TVD	MD	Inc	Azi	+N/-S	+E/-W	VSect	Dep	Annotation	
1850.0	1850.0	0.00	0.00	0.0	0.0	0.0	0.0	START NUDGE (5'/30m BUR)	
2415.3	2441.2	29.56	203.10	-137.2	-58.5	82.8	149.2	EOB TO 29.56° INC	
5711.5	6230.5	29.56	203.10	-1856.6	-791.9	1120.0	2018.4	END OF TANGENT	
6276.8	6821.7	0.00	0.00	-1993.8	-850.4	1202.7	2167.6	EOD TO VERTICAL	
6306.8	6851.7	0.00	0.00	-1993.8	-850.4	1202.7	2167.6	KOP (10°/100ft BUR)	
6879.8	7751.8	90.00	273.02	-1963.6	-1422.6	1759.6	2740.6	7" ICP - DT-MARTINEZ 1-5-6	
6879.8	14835.6	90.00	273.02	-1590.6	-8496.6	8644.2	9824.4	BHL - DT-MARTINEZ 1-5-6	

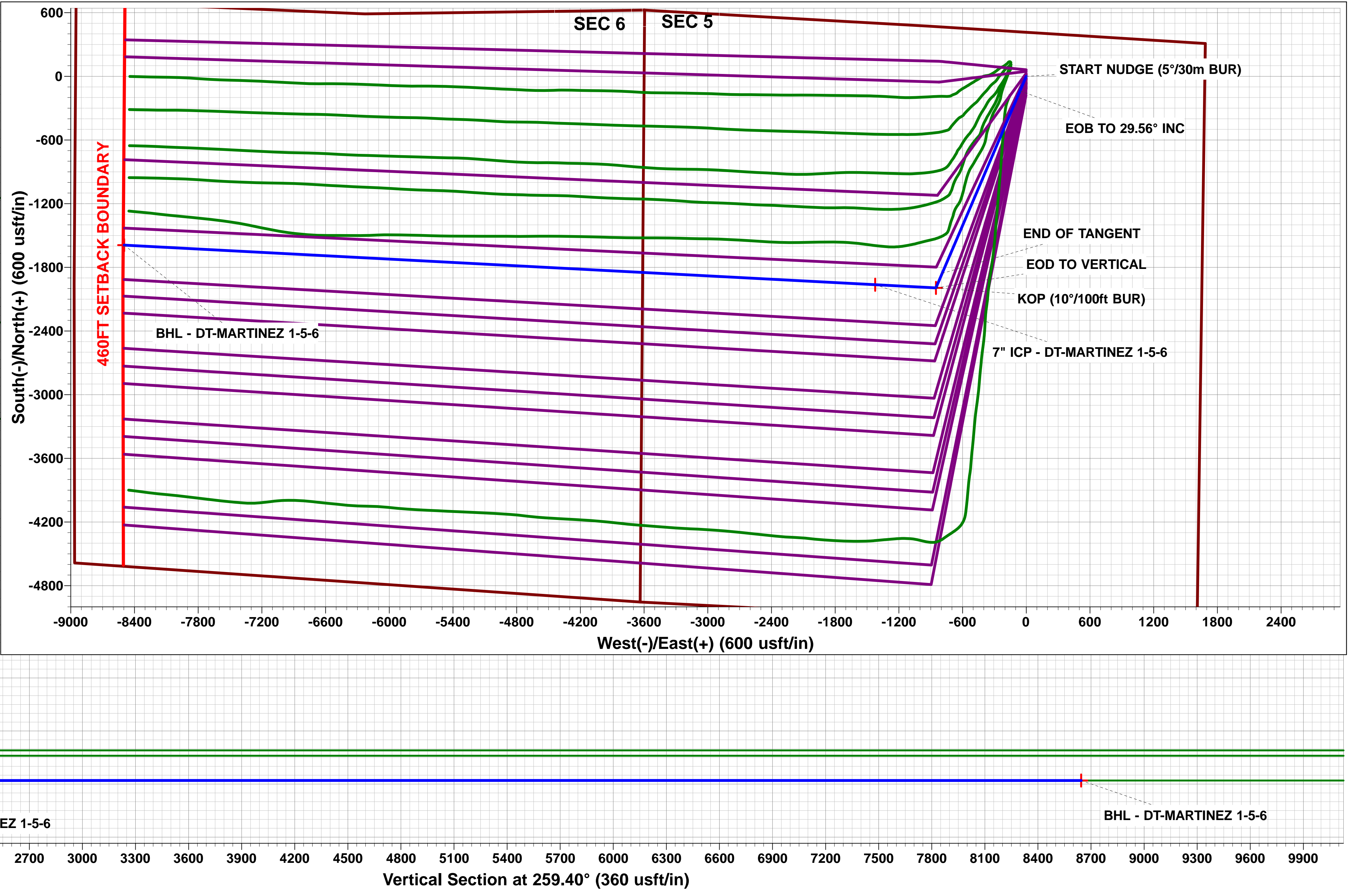
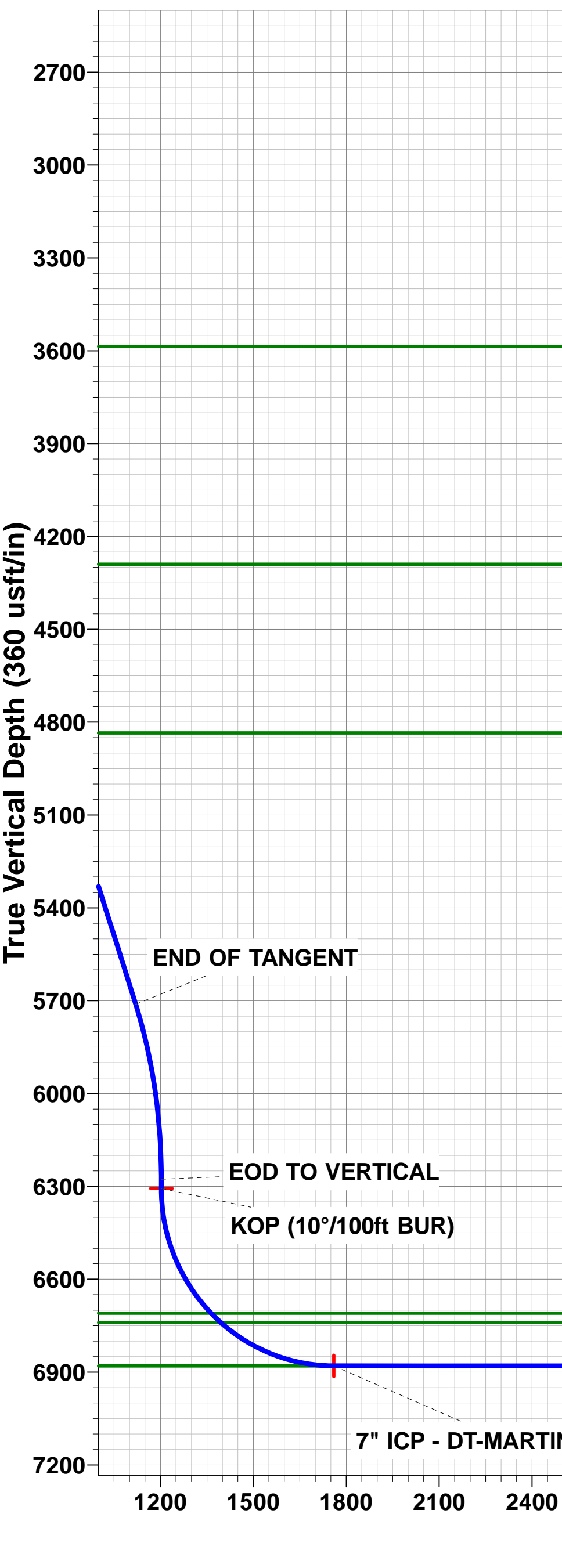
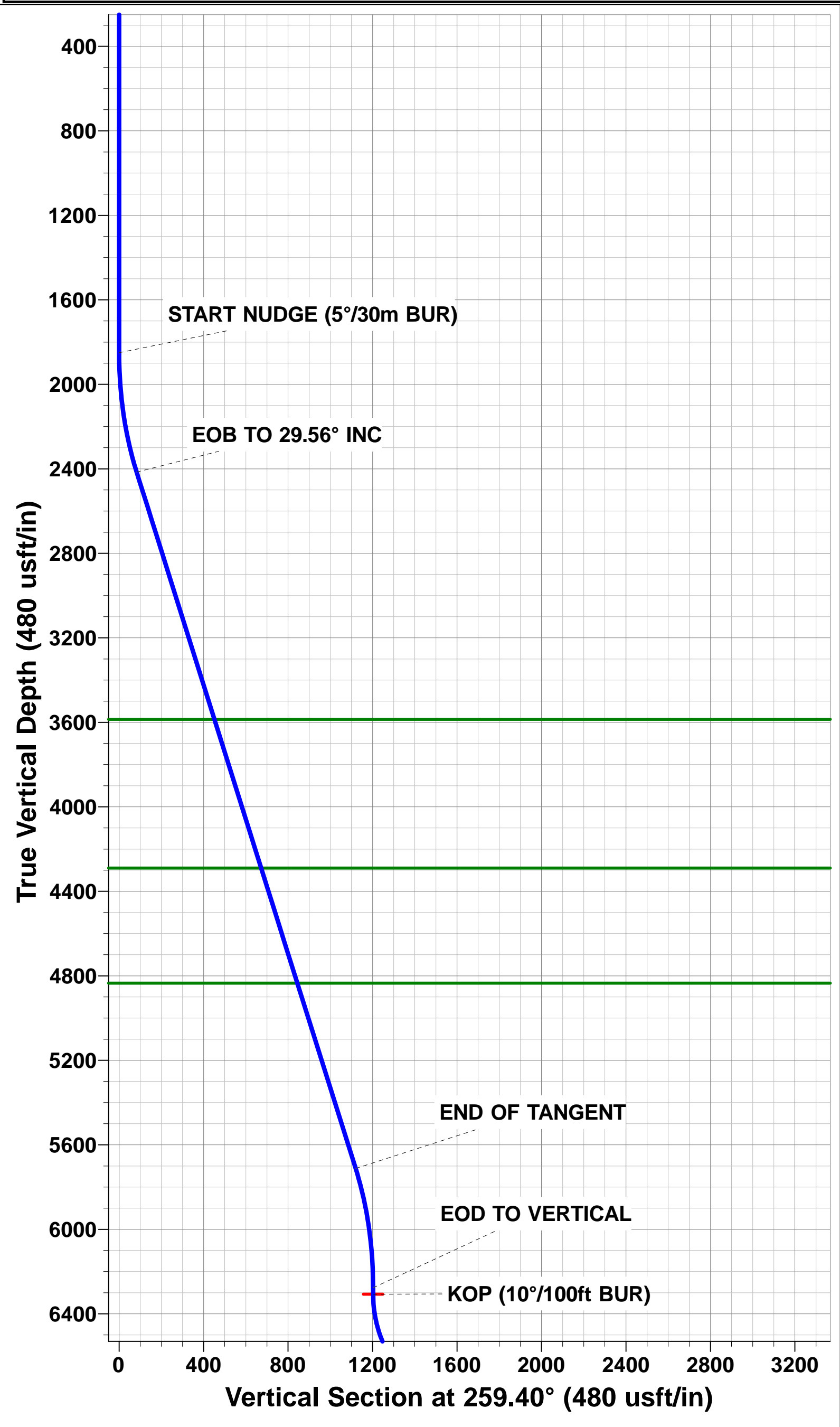
WELLBORE TARGET DETAILS (LAT/LONG)					
Name	TVD	+N/-S	+E/-W	Latitude	Longitude
KOP - DT-MARTINEZ 1-5-6	6306.8	-1993.8	-850.4	40.429887	-104.686785
7" ICP - DT-MARTINEZ 1-5-6	6879.8	-1963.6	-1422.6	40.429970	-104.688840
BHL - DT-MARTINEZ 1-5-6	6879.8	-1590.6	-8496.6	40.430990	-104.714250



FORMATION TOP DETAILS		
TVDPath	MDPath	Formation
3585.8	3786.8	PARKMAN
4289.8	4596.1	SUSSEX
4834.8	5222.7	SHANNON
6709.8	7298.7	SHARON SPRINGS
6739.8	7342.6	NIOBRARA
6879.8	7751.8	NIO B TARGET

Azimuths to True North
Magnetic North: 8.37°

Magnetic Field
Strength: 52801.5snT
Dip Angle: 66.97°
Date: 08/11/2014
Model: IGRF2010



Planning Report



Database:	EDM 5000.1 Single User Db	Local Co-ordinate Reference:	Well DT-MARTINEZ 1-5-6
Company:	EXTRACTION OIL & GAS	TVD Reference:	KB-EST @ 4656.8usft (SAV 802)
Project:	WELD COUNTY, COLORADO (NAD 83)	MD Reference:	KB-EST @ 4656.8usft (SAV 802)
Site:	NW NE SEC. 5 T5N R65W 6th P.M.	North Reference:	True
Well:	DT-MARTINEZ 1-5-6	Survey Calculation Method:	Minimum Curvature
Wellbore:	ORIGINAL WELLBORE		
Design:	PROPOSAL #2		

Project	WELD COUNTY, COLORADO (NAD 83)		
Map System:	US State Plane 1983	System Datum:	Mean Sea Level
Geo Datum:	North American Datum 1983		
Map Zone:	Colorado Northern Zone		Using geodetic scale factor

Site	NW NE SEC. 5 T5N R65W 6th P.M.		
Site Position:		Northing:	1,402,409.16usft
From:	Lat/Long	Easting:	3,226,987.53usft
Position Uncertainty:	0.0 usft	Slot Radius:	1.10000ft
		Latitude:	40.435150
		Longitude:	-104.684560
		Grid Convergence:	0.53 °

Well	DT-MARTINEZ 1-5-6		
Well Position	+N-S	76.5 usft	Northing:
	+E-W	231.1 usft	Easting:
Position Uncertainty		0.0 usft	Wellhead Elevation:
			Latitude:
			Longitude:
			Ground Level:

Wellbore	ORIGINAL WELLBORE				
Magnetics	Model Name	Sample Date	Declination (°)	Dip Angle (°)	Field Strength (nT)
	IGRF2010	08/11/2014	8.37	66.97	52,801

Design	PROPOSAL #2			
Audit Notes:				
Version:	Phase:	PROTOTYPE	Tie On Depth:	0.0
Vertical Section:	Depth From (TVD) (usft)	+N-S (usft)	+E-W (usft)	Direction (°)
	0.0	0.0	0.0	259.40

Plan Sections											
MD (usft)	Inc (°)	Azi (°)	Vertical Depth	SS (usft)	+N-S (usft)	+E-W (usft)	Dogleg Rate (°/100usf)	Build Rate (°/100usf)	Turn Rate (°/100usf)	TFO (°)	Target
0.0	0.00	0.00	0.0	-4,656.8	0.0	0.0	0.00	0.00	0.00	0.00	
1,850.0	0.00	0.00	1,850.0	-2,806.8	0.0	0.0	0.00	0.00	0.00	0.00	
2,441.2	29.56	203.10	2,415.3	-2,241.5	-137.2	-58.5	5.00	5.00	0.00	203.10	
6,230.5	29.56	203.10	5,711.5	1,054.7	-1,856.6	-791.9	0.00	0.00	0.00	0.00	
6,821.7	0.00	0.00	6,276.8	1,620.0	-1,993.8	-850.4	5.00	-5.00	0.00	180.00	
6,851.7	0.00	0.00	6,306.8	1,650.0	-1,993.8	-850.4	0.00	0.00	0.00	0.00	KOP - DT-MARTINI
7,751.8	90.00	273.02	6,879.8	2,223.0	-1,963.6	-1,422.6	10.00	10.00	-9.66	273.02	7" ICP - DT-MARTI
14,835.6	90.00	273.02	6,879.8	2,223.0	-1,590.6	-8,496.6	0.00	0.00	0.00	-153.27	BHL - DT-MARTINE

Planning Report



Database:	EDM 5000.1 Single User Db	Local Co-ordinate Reference:	Well DT-MARTINEZ 1-5-6
Company:	EXTRACTION OIL & GAS	TVD Reference:	KB-EST @ 4656.8usft (SAV 802)
Project:	WELD COUNTY, COLORADO (NAD 83)	MD Reference:	KB-EST @ 4656.8usft (SAV 802)
Site:	NW NE SEC. 5 T5N R65W 6th P.M.	North Reference:	True
Well:	DT-MARTINEZ 1-5-6	Survey Calculation Method:	Minimum Curvature
Wellbore:	ORIGINAL WELLBORE		
Design:	PROPOSAL #2		

Planned Survey

MD (usft)	Inc (°)	Azi (°)	TVD (usft)	SS (usft)	+N/-S (usft)	+E/-W (usft)	Vertical Section (usft)	Dogleg Rate (°/100usft)	Build Rate (°/100usft)	Turn Rate (°/100usft)
0.0	0.00	0.00	0.0	4,656.80	0.0	0.0	0.0	0.00	0.00	0.00
100.0	0.00	0.00	100.0	4,556.80	0.0	0.0	0.0	0.00	0.00	0.00
200.0	0.00	0.00	200.0	4,456.80	0.0	0.0	0.0	0.00	0.00	0.00
300.0	0.00	0.00	300.0	4,356.80	0.0	0.0	0.0	0.00	0.00	0.00
400.0	0.00	0.00	400.0	4,256.80	0.0	0.0	0.0	0.00	0.00	0.00
500.0	0.00	0.00	500.0	4,156.80	0.0	0.0	0.0	0.00	0.00	0.00
600.0	0.00	0.00	600.0	4,056.80	0.0	0.0	0.0	0.00	0.00	0.00
700.0	0.00	0.00	700.0	3,956.80	0.0	0.0	0.0	0.00	0.00	0.00
800.0	0.00	0.00	800.0	3,856.80	0.0	0.0	0.0	0.00	0.00	0.00
900.0	0.00	0.00	900.0	3,756.80	0.0	0.0	0.0	0.00	0.00	0.00
1,000.0	0.00	0.00	1,000.0	3,656.80	0.0	0.0	0.0	0.00	0.00	0.00
1,100.0	0.00	0.00	1,100.0	3,556.80	0.0	0.0	0.0	0.00	0.00	0.00
1,200.0	0.00	0.00	1,200.0	3,456.80	0.0	0.0	0.0	0.00	0.00	0.00
1,300.0	0.00	0.00	1,300.0	3,356.80	0.0	0.0	0.0	0.00	0.00	0.00
1,400.0	0.00	0.00	1,400.0	3,256.80	0.0	0.0	0.0	0.00	0.00	0.00
1,500.0	0.00	0.00	1,500.0	3,156.80	0.0	0.0	0.0	0.00	0.00	0.00
1,600.0	0.00	0.00	1,600.0	3,056.80	0.0	0.0	0.0	0.00	0.00	0.00
1,700.0	0.00	0.00	1,700.0	2,956.80	0.0	0.0	0.0	0.00	0.00	0.00
1,800.0	0.00	0.00	1,800.0	2,856.80	0.0	0.0	0.0	0.00	0.00	0.00
START NUDGE (5'/30m BUR)										
1,850.0	0.00	0.00	1,850.0	2,806.80	0.0	0.0	0.0	0.00	0.00	0.00
1,900.0	2.50	203.10	1,900.0	2,756.82	-1.0	-0.4	0.6	5.00	5.00	0.00
2,000.0	7.50	203.10	1,999.6	2,657.23	-9.0	-3.8	5.4	5.00	5.00	0.00
2,100.0	12.50	203.10	2,098.0	2,558.78	-25.0	-10.7	15.1	5.00	5.00	0.00
2,200.0	17.50	203.10	2,194.6	2,462.22	-48.8	-20.8	29.4	5.00	5.00	0.00
2,300.0	22.50	203.10	2,288.5	2,368.28	-80.2	-34.2	48.4	5.00	5.00	0.00
2,400.0	27.50	203.10	2,379.1	2,277.68	-119.1	-50.8	71.8	5.00	5.00	0.00
EOB TO 29.56° INC										
2,441.2	29.56	203.10	2,415.3	2,241.48	-137.2	-58.5	82.8	4.99	4.99	0.00
2,500.0	29.56	203.10	2,466.5	2,190.33	-163.9	-69.9	98.9	0.00	0.00	0.00
2,600.0	29.56	203.10	2,553.5	2,103.35	-209.3	-89.2	126.2	0.00	0.00	0.00
2,700.0	29.56	203.10	2,640.4	2,016.36	-254.6	-108.6	153.6	0.00	0.00	0.00
2,800.0	29.56	203.10	2,727.4	1,929.37	-300.0	-128.0	181.0	0.00	0.00	0.00
2,900.0	29.56	203.10	2,814.4	1,842.39	-345.4	-147.3	208.3	0.00	0.00	0.00
3,000.0	29.56	203.10	2,901.4	1,755.40	-390.8	-166.7	235.7	0.00	0.00	0.00
3,100.0	29.56	203.10	2,988.4	1,668.42	-436.1	-186.0	263.1	0.00	0.00	0.00
3,200.0	29.56	203.10	3,075.4	1,581.43	-481.5	-205.4	290.5	0.00	0.00	0.00
3,300.0	29.56	203.10	3,162.4	1,494.44	-526.9	-224.7	317.8	0.00	0.00	0.00
3,400.0	29.56	203.10	3,249.3	1,407.46	-572.3	-244.1	345.2	0.00	0.00	0.00
3,500.0	29.56	203.10	3,336.3	1,320.47	-617.6	-263.4	372.6	0.00	0.00	0.00
3,600.0	29.56	203.10	3,423.3	1,233.49	-663.0	-282.8	399.9	0.00	0.00	0.00
3,700.0	29.56	203.10	3,510.3	1,146.50	-708.4	-302.1	427.3	0.00	0.00	0.00
PARKMAN										
3,786.8	29.56	203.10	3,585.8	1,071.00	-747.8	-318.9	451.1	0.00	0.00	0.00
3,800.0	29.56	203.10	3,597.3	1,059.51	-753.8	-321.5	454.7	0.00	0.00	0.00
3,900.0	29.56	203.10	3,684.3	972.53	-799.1	-340.8	482.1	0.00	0.00	0.00
4,000.0	29.56	203.10	3,771.3	885.54	-844.5	-360.2	509.4	0.00	0.00	0.00
4,100.0	29.56	203.10	3,858.2	798.56	-889.9	-379.5	536.8	0.00	0.00	0.00
4,200.0	29.56	203.10	3,945.2	711.57	-935.3	-398.9	564.2	0.00	0.00	0.00
4,300.0	29.56	203.10	4,032.2	624.58	-980.6	-418.3	591.6	0.00	0.00	0.00
4,400.0	29.56	203.10	4,119.2	537.60	-1,026.0	-437.6	618.9	0.00	0.00	0.00
4,500.0	29.56	203.10	4,206.2	450.61	-1,071.4	-457.0	646.3	0.00	0.00	0.00
SUSSEX										
4,596.1	29.56	203.10	4,289.8	367.00	-1,115.0	-475.6	672.6	0.00	0.00	0.00

Planning Report



Database:	EDM 5000.1 Single User Db	Local Co-ordinate Reference:	Well DT-MARTINEZ 1-5-6
Company:	EXTRACTION OIL & GAS	TVD Reference:	KB-EST @ 4656.8usft (SAV 802)
Project:	WELD COUNTY, COLORADO (NAD 83)	MD Reference:	KB-EST @ 4656.8usft (SAV 802)
Site:	NW NE SEC. 5 T5N R65W 6th P.M.	North Reference:	True
Well:	DT-MARTINEZ 1-5-6	Survey Calculation Method:	Minimum Curvature
Wellbore:	ORIGINAL WELLBORE		
Design:	PROPOSAL #2		

Planned Survey										
MD (usft)	Inc (°)	Azi (°)	TVD (usft)	SS (usft)	+N/-S (usft)	+E/-W (usft)	Vertical Section (usft)	Dogleg Rate (°/100usft)	Build Rate (°/100usft)	Turn Rate (°/100usft)
4,600.0	29.56	203.10	4,293.2	363.63	-1,116.8	-476.3	673.7	0.00	0.00	0.00
4,700.0	29.56	203.10	4,380.2	276.64	-1,162.1	-495.7	701.0	0.00	0.00	0.00
4,800.0	29.56	203.10	4,467.1	189.65	-1,207.5	-515.0	728.4	0.00	0.00	0.00
4,900.0	29.56	203.10	4,554.1	102.67	-1,252.9	-534.4	755.8	0.00	0.00	0.00
5,000.0	29.56	203.10	4,641.1	15.68	-1,298.3	-553.7	783.2	0.00	0.00	0.00
5,100.0	29.56	203.10	4,728.1	-71.30	-1,343.6	-573.1	810.5	0.00	0.00	0.00
5,200.0	29.56	203.10	4,815.1	-158.29	-1,389.0	-592.4	837.9	0.00	0.00	0.00
SHANNON										
5,222.7	29.56	203.10	4,834.8	-178.00	-1,399.3	-596.8	844.1	0.00	0.00	0.00
5,300.0	29.56	203.10	4,902.1	-245.27	-1,434.4	-611.8	865.3	0.00	0.00	0.00
5,400.0	29.56	203.10	4,989.1	-332.26	-1,479.8	-631.1	892.6	0.00	0.00	0.00
5,500.0	29.56	203.10	5,076.0	-419.25	-1,525.1	-650.5	920.0	0.00	0.00	0.00
5,600.0	29.56	203.10	5,163.0	-506.23	-1,570.5	-669.8	947.4	0.00	0.00	0.00
5,700.0	29.56	203.10	5,250.0	-593.22	-1,615.9	-689.2	974.8	0.00	0.00	0.00
5,800.0	29.56	203.10	5,337.0	-680.20	-1,661.3	-708.6	1,002.1	0.00	0.00	0.00
5,900.0	29.56	203.10	5,424.0	-767.19	-1,706.6	-727.9	1,029.5	0.00	0.00	0.00
6,000.0	29.56	203.10	5,511.0	-854.18	-1,752.0	-747.3	1,056.9	0.00	0.00	0.00
6,100.0	29.56	203.10	5,598.0	-941.16	-1,797.4	-766.6	1,084.3	0.00	0.00	0.00
6,200.0	29.56	203.10	5,684.9	-1,028.15	-1,842.8	-786.0	1,111.6	0.00	0.00	0.00
END OF TANGENT										
6,230.5	29.56	203.10	5,711.5	-1,054.68	-1,856.6	-791.9	1,120.0	0.00	0.00	0.00
6,300.0	26.09	203.10	5,772.9	-1,116.14	-1,886.4	-804.6	1,138.0	5.00	-5.00	0.00
6,400.0	21.09	203.10	5,864.6	-1,207.75	-1,923.2	-820.3	1,160.2	5.00	-5.00	0.00
6,500.0	16.09	203.10	5,959.3	-1,302.51	-1,952.5	-832.8	1,177.8	5.00	-5.00	0.00
6,600.0	11.09	203.10	6,056.5	-1,399.68	-1,974.1	-842.0	1,190.9	5.00	-5.00	0.00
6,700.0	6.09	203.10	6,155.3	-1,498.53	-1,987.8	-847.9	1,199.2	5.00	-5.00	0.00
6,800.0	1.09	203.10	6,255.1	-1,598.30	-1,993.6	-850.3	1,202.6	5.00	-5.00	0.00
EOD TO VERTICAL										
6,821.7	0.00	0.00	6,276.8	-1,620.00	-1,993.8	-850.4	1,202.7	5.00	-5.00	723.05
KOP (10°/100ft BUR)										
6,851.7	0.00	0.00	6,306.8	-1,650.00	-1,993.8	-850.4	1,202.7	0.00	0.00	0.00
6,900.0	4.83	273.02	6,355.0	-1,698.24	-1,993.7	-852.4	1,204.7	10.00	10.00	0.00
7,000.0	14.83	273.02	6,453.4	-1,796.65	-1,992.8	-869.4	1,221.3	10.00	10.00	0.00
7,100.0	24.83	273.02	6,547.4	-1,890.60	-1,991.0	-903.3	1,254.2	10.00	10.00	0.00
7,200.0	34.83	273.02	6,634.0	-1,977.24	-1,988.4	-952.9	1,302.5	10.00	10.00	0.00
SHARON SPRINGS										
7,298.7	44.69	273.02	6,709.8	-2,053.00	-1,985.1	-1,015.8	1,363.7	10.00	10.00	0.00
7,300.0	44.83	273.02	6,710.7	-2,053.94	-1,985.0	-1,016.8	1,364.7	10.00	10.00	0.00
NIOBRARA										
7,342.6	49.08	273.02	6,739.8	-2,083.00	-1,983.4	-1,047.8	1,394.9	10.00	10.00	0.00
7,400.0	54.83	273.02	6,775.2	-2,118.37	-1,981.0	-1,093.0	1,438.8	10.00	10.00	0.00
7,500.0	64.83	273.02	6,825.4	-2,168.57	-1,976.4	-1,179.2	1,522.7	10.00	10.00	0.00
7,600.0	74.82	273.02	6,859.8	-2,203.02	-1,971.5	-1,272.8	1,613.8	10.00	10.00	0.00
7,700.0	84.82	273.02	6,877.5	-2,220.66	-1,966.3	-1,371.0	1,709.4	10.00	10.00	0.00
7" ICP - DT-MARTINEZ 1-5-6 - NIO B TARGET										
7,751.8	90.00	273.02	6,879.8	-2,223.00	-1,963.6	-1,422.6	1,759.6	10.00	10.00	0.00
7,800.0	90.00	273.02	6,879.8	-2,223.00	-1,961.1	-1,470.8	1,806.5	0.00	0.00	0.00
7,900.0	90.00	273.02	6,879.8	-2,222.99	-1,955.8	-1,570.6	1,903.7	0.00	0.00	0.00
8,000.0	90.00	273.02	6,879.8	-2,222.99	-1,950.5	-1,670.5	2,000.9	0.00	0.00	0.00
8,100.0	90.00	273.02	6,879.8	-2,222.99	-1,945.3	-1,770.3	2,098.1	0.00	0.00	0.00
8,200.0	90.00	273.02	6,879.8	-2,222.98	-1,940.0	-1,870.2	2,195.2	0.00	0.00	0.00
8,300.0	90.00	273.02	6,879.8	-2,222.98	-1,934.7	-1,970.1	2,292.4	0.00	0.00	0.00
8,400.0	90.00	273.02	6,879.8	-2,222.98	-1,929.5	-2,069.9	2,389.6	0.00	0.00	0.00

Planning Report



Database:	EDM 5000.1 Single User Db	Local Co-ordinate Reference:	Well DT-MARTINEZ 1-5-6
Company:	EXTRACTION OIL & GAS	TVD Reference:	KB-EST @ 4656.8usft (SAV 802)
Project:	WELD COUNTY, COLORADO (NAD 83)	MD Reference:	KB-EST @ 4656.8usft (SAV 802)
Site:	NW NE SEC. 5 T5N R65W 6th P.M.	North Reference:	True
Well:	DT-MARTINEZ 1-5-6	Survey Calculation Method:	Minimum Curvature
Wellbore:	ORIGINAL WELLBORE		
Design:	PROPOSAL #2		

Planned Survey										
MD (usft)	Inc (°)	Azi (°)	TVD (usft)	SS (usft)	+N/-S (usft)	+E/-W (usft)	Vertical Section (usft)	Dogleg Rate (°/100usft)	Build Rate (°/100usft)	Turn Rate (°/100usft)
8,500.0	90.00	273.02	6,879.8	-2,222.97	-1,924.2	-2,169.8	2,486.8	0.00	0.00	0.00
8,600.0	90.00	273.02	6,879.8	-2,222.97	-1,918.9	-2,269.6	2,584.0	0.00	0.00	0.00
8,700.0	90.00	273.02	6,879.8	-2,222.97	-1,913.7	-2,369.5	2,681.2	0.00	0.00	0.00
8,800.0	90.00	273.02	6,879.8	-2,222.97	-1,908.4	-2,469.4	2,778.4	0.00	0.00	0.00
8,900.0	90.00	273.02	6,879.8	-2,222.96	-1,903.1	-2,569.2	2,875.5	0.00	0.00	0.00
9,000.0	90.00	273.02	6,879.8	-2,222.96	-1,897.9	-2,669.1	2,972.7	0.00	0.00	0.00
9,100.0	90.00	273.02	6,879.8	-2,222.96	-1,892.6	-2,769.0	3,069.9	0.00	0.00	0.00
9,200.0	90.00	273.02	6,879.8	-2,222.96	-1,887.3	-2,868.8	3,167.1	0.00	0.00	0.00
9,300.0	90.00	273.02	6,879.8	-2,222.95	-1,882.1	-2,968.7	3,264.3	0.00	0.00	0.00
9,400.0	90.00	273.02	6,879.8	-2,222.95	-1,876.8	-3,068.5	3,361.5	0.00	0.00	0.00
9,500.0	90.00	273.02	6,879.7	-2,222.95	-1,871.5	-3,168.4	3,458.7	0.00	0.00	0.00
9,600.0	90.00	273.02	6,879.7	-2,222.95	-1,866.3	-3,268.3	3,555.9	0.00	0.00	0.00
9,700.0	90.00	273.02	6,879.7	-2,222.95	-1,861.0	-3,368.1	3,653.0	0.00	0.00	0.00
9,800.0	90.00	273.02	6,879.7	-2,222.94	-1,855.7	-3,468.0	3,750.2	0.00	0.00	0.00
9,900.0	90.00	273.02	6,879.7	-2,222.94	-1,850.4	-3,567.8	3,847.4	0.00	0.00	0.00
10,000.0	90.00	273.02	6,879.7	-2,222.94	-1,845.2	-3,667.7	3,944.6	0.00	0.00	0.00
10,100.0	90.00	273.02	6,879.7	-2,222.94	-1,839.9	-3,767.6	4,041.8	0.00	0.00	0.00
10,200.0	90.00	273.02	6,879.7	-2,222.94	-1,834.7	-3,867.4	4,139.0	0.00	0.00	0.00
10,300.0	90.00	273.02	6,879.7	-2,222.94	-1,829.4	-3,967.3	4,236.2	0.00	0.00	0.00
10,400.0	90.00	273.02	6,879.7	-2,222.94	-1,824.1	-4,067.1	4,333.4	0.00	0.00	0.00
10,500.0	90.00	273.02	6,879.7	-2,222.94	-1,818.9	-4,167.0	4,430.5	0.00	0.00	0.00
10,600.0	90.00	273.02	6,879.7	-2,222.93	-1,813.6	-4,266.9	4,527.7	0.00	0.00	0.00
10,700.0	90.00	273.02	6,879.7	-2,222.93	-1,808.3	-4,366.7	4,624.9	0.00	0.00	0.00
10,800.0	90.00	273.02	6,879.7	-2,222.93	-1,803.1	-4,466.6	4,722.1	0.00	0.00	0.00
10,900.0	90.00	273.02	6,879.7	-2,222.93	-1,797.8	-4,566.5	4,819.3	0.00	0.00	0.00
11,000.0	90.00	273.02	6,879.7	-2,222.93	-1,792.5	-4,666.3	4,916.5	0.00	0.00	0.00
11,100.0	90.00	273.02	6,879.7	-2,222.93	-1,787.3	-4,766.2	5,013.7	0.00	0.00	0.00
11,200.0	90.00	273.02	6,879.7	-2,222.93	-1,782.0	-4,866.0	5,110.8	0.00	0.00	0.00
11,300.0	90.00	273.02	6,879.7	-2,222.93	-1,776.7	-4,965.9	5,208.0	0.00	0.00	0.00
11,400.0	90.00	273.02	6,879.7	-2,222.93	-1,771.5	-5,065.8	5,305.2	0.00	0.00	0.00
11,500.0	90.00	273.02	6,879.7	-2,222.93	-1,766.2	-5,165.6	5,402.4	0.00	0.00	0.00
11,600.0	90.00	273.02	6,879.7	-2,222.93	-1,760.9	-5,265.5	5,499.6	0.00	0.00	0.00
11,700.0	90.00	273.02	6,879.7	-2,222.93	-1,755.7	-5,365.3	5,596.8	0.00	0.00	0.00
11,800.0	90.00	273.02	6,879.7	-2,222.93	-1,750.4	-5,465.2	5,694.0	0.00	0.00	0.00
11,900.0	90.00	273.02	6,879.7	-2,222.93	-1,745.1	-5,565.1	5,791.2	0.00	0.00	0.00
12,000.0	90.00	273.02	6,879.7	-2,222.94	-1,739.9	-5,664.9	5,888.3	0.00	0.00	0.00
12,100.0	90.00	273.02	6,879.7	-2,222.94	-1,734.6	-5,764.8	5,985.5	0.00	0.00	0.00
12,200.0	90.00	273.02	6,879.7	-2,222.94	-1,729.3	-5,864.7	6,082.7	0.00	0.00	0.00
12,300.0	90.00	273.02	6,879.7	-2,222.94	-1,724.1	-5,964.5	6,179.9	0.00	0.00	0.00
12,400.0	90.00	273.02	6,879.7	-2,222.94	-1,718.8	-6,064.4	6,277.1	0.00	0.00	0.00
12,500.0	90.00	273.02	6,879.7	-2,222.94	-1,713.5	-6,164.2	6,374.3	0.00	0.00	0.00
12,600.0	90.00	273.02	6,879.7	-2,222.94	-1,708.3	-6,264.1	6,471.5	0.00	0.00	0.00
12,700.0	90.00	273.02	6,879.7	-2,222.94	-1,703.0	-6,364.0	6,568.7	0.00	0.00	0.00
12,800.0	90.00	273.02	6,879.7	-2,222.94	-1,697.7	-6,463.8	6,665.8	0.00	0.00	0.00
12,900.0	90.00	273.02	6,879.7	-2,222.95	-1,692.5	-6,563.7	6,763.0	0.00	0.00	0.00
13,000.0	90.00	273.02	6,879.7	-2,222.95	-1,687.2	-6,663.5	6,860.2	0.00	0.00	0.00
13,100.0	90.00	273.02	6,879.7	-2,222.95	-1,681.9	-6,763.4	6,957.4	0.00	0.00	0.00
13,200.0	90.00	273.02	6,879.8	-2,222.95	-1,676.7	-6,863.3	7,054.6	0.00	0.00	0.00
13,300.0	90.00	273.02	6,879.8	-2,222.95	-1,671.4	-6,963.1	7,151.8	0.00	0.00	0.00
13,400.0	90.00	273.02	6,879.8	-2,222.96	-1,666.2	-7,063.0	7,249.0	0.00	0.00	0.00
13,500.0	90.00	273.02	6,879.8	-2,222.96	-1,660.9	-7,162.8	7,346.2	0.00	0.00	0.00
13,600.0	90.00	273.02	6,879.8	-2,222.96	-1,655.6	-7,262.7	7,443.3	0.00	0.00	0.00
13,700.0	90.00	273.02	6,879.8	-2,222.96	-1,650.4	-7,362.6	7,540.5	0.00	0.00	0.00
13,800.0	90.00	273.02	6,879.8	-2,222.97	-1,645.1	-7,462.4	7,637.7	0.00	0.00	0.00

Database:	EDM 5000.1 Single User Db	Local Co-ordinate Reference:	Well DT-MARTINEZ 1-5-6
Company:	EXTRACTION OIL & GAS	TVD Reference:	KB-EST @ 4656.8usft (SAV 802)
Project:	WELD COUNTY, COLORADO (NAD 83)	MD Reference:	KB-EST @ 4656.8usft (SAV 802)
Site:	NW NE SEC. 5 T5N R65W 6th P.M.	North Reference:	True
Well:	DT-MARTINEZ 1-5-6	Survey Calculation Method:	Minimum Curvature
Wellbore:	ORIGINAL WELLBORE		
Design:	PROPOSAL #2		

Planned Survey

MD (usft)	Inc (°)	Azi (°)	TVD (usft)	SS (usft)	+N/-S (usft)	+E/-W (usft)	Vertical Section (usft)	Dogleg Rate (°/100usft)	Build Rate (°/100usft)	Turn Rate (°/100usft)
13,900.0	90.00	273.02	6,879.8	-2,222.97	-1,639.8	-7,562.3	7,734.9	0.00	0.00	0.00
14,000.0	90.00	273.02	6,879.8	-2,222.97	-1,634.6	-7,662.2	7,832.1	0.00	0.00	0.00
14,100.0	90.00	273.02	6,879.8	-2,222.97	-1,629.3	-7,762.0	7,929.3	0.00	0.00	0.00
14,200.0	90.00	273.02	6,879.8	-2,222.98	-1,624.0	-7,861.9	8,026.5	0.00	0.00	0.00
14,300.0	90.00	273.02	6,879.8	-2,222.98	-1,618.8	-7,961.7	8,123.7	0.00	0.00	0.00
14,400.0	90.00	273.02	6,879.8	-2,222.98	-1,613.5	-8,061.6	8,220.8	0.00	0.00	0.00
14,500.0	90.00	273.02	6,879.8	-2,222.99	-1,608.2	-8,161.5	8,318.0	0.00	0.00	0.00
14,600.0	90.00	273.02	6,879.8	-2,222.99	-1,603.0	-8,261.3	8,415.2	0.00	0.00	0.00
14,700.0	90.00	273.02	6,879.8	-2,222.99	-1,597.7	-8,361.2	8,512.4	0.00	0.00	0.00
14,800.0	90.00	273.02	6,879.8	-2,223.00	-1,592.5	-8,461.0	8,609.6	0.00	0.00	0.00
BHL - DT-MARTINEZ 1-5-6										
14,835.6	90.00	273.02	6,879.8	-2,223.00	-1,590.6	-8,496.6	8,644.2	0.00	0.00	0.00

Formations

MD (usft)	TVD (usft)	Name	Lithology	Dip (°)	Dip Direction (°)
3,786.8	3,585.8	PARKMAN		0.00	
4,596.1	4,289.8	SUSSEX		0.00	
5,222.7	4,834.8	SHANNON		0.00	
7,298.7	6,709.8	SHARON SPRINGS		0.00	
7,342.6	6,739.8	NIOBRARA		0.00	
7,751.8	6,879.8	NIO B TARGET		0.00	

Plan Annotations

MD (usft)	TVD (usft)	Local Coordinates		Comment
		+N/-S (usft)	+E/-W (usft)	
1,850.0	1,850.0	0.0	0.0	START NUDGE (5°/30m BUR)
2,441.2	2,415.3	-137.2	-58.5	EOB TO 29.56° INC
6,230.5	5,711.5	-1,856.6	-791.9	END OF TANGENT
6,821.7	6,276.8	-1,993.8	-850.4	EOD TO VERTICAL
6,851.7	6,306.8	-1,993.8	-850.4	KOP (10°/100ft BUR)
7,751.8	6,879.8	-1,963.6	-1,422.6	7" ICP - DT-MARTINEZ 1-5-6
14,835.6	6,879.8	-1,590.6	-8,496.6	BHL - DT-MARTINEZ 1-5-6