

EXTRACTION OIL & GAS

WELD COUNTY, COLORADO (NAD 83)

NW NE SEC. 5 T5N R65W 6th P.M.

DT-MARTINEZ 2-5-6

ORIGINAL WELLBORE

17 November, 2014

Plan: PROPOSAL #2

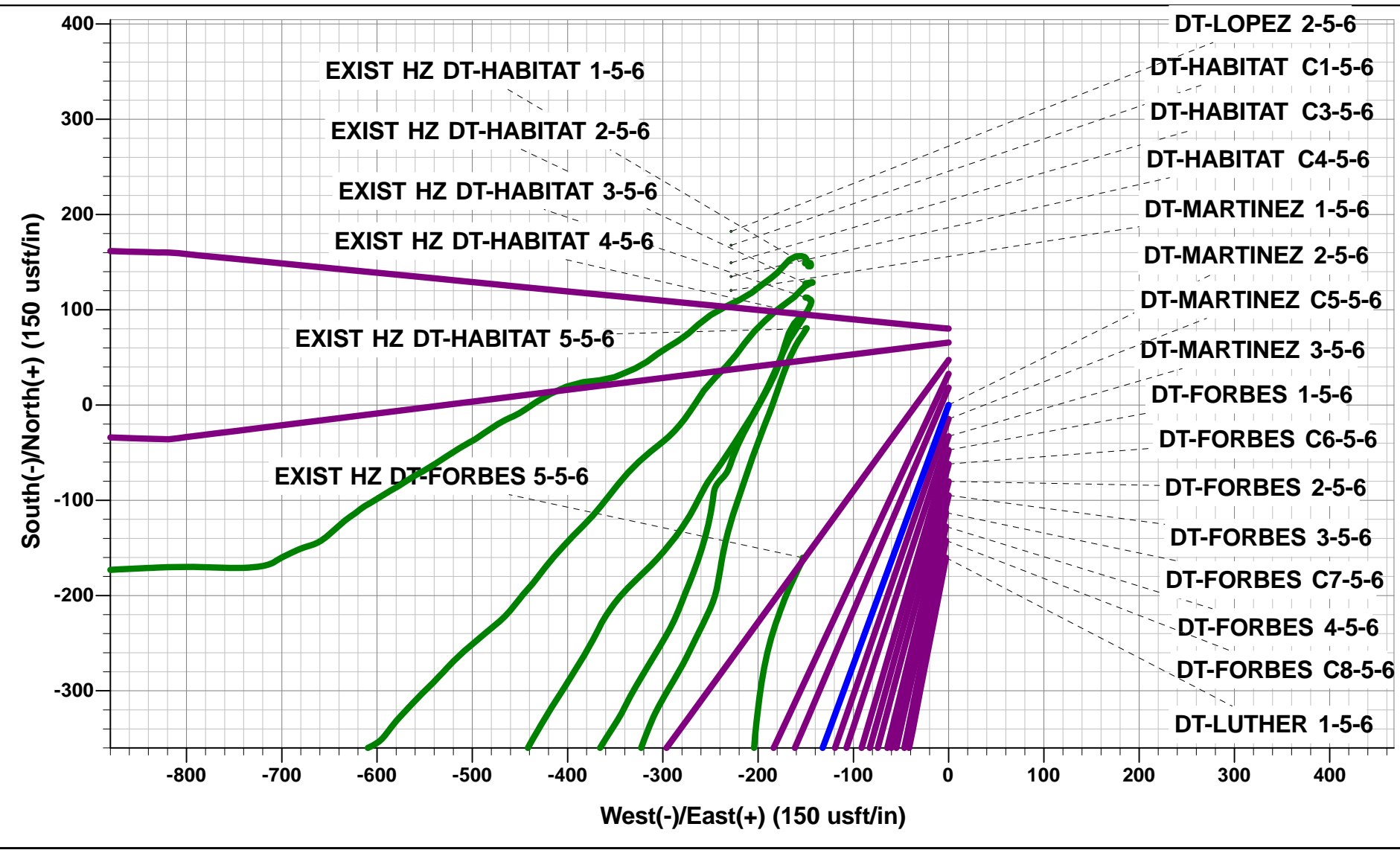




Project: WELD COUNTY, COLORADO (NAD 83)
Site: NW NE SEC. 5 T5N R65W 6th P.M.
Well: DT-MARTINEZ 2-5-6
Wellbore: ORIGINAL WELLBORE
Design: PROPOSAL #2

ANNOTATIONS									
TVD	MD	Inc	Azi	+N/-S	+E/-W	VSect	Dep	Annotation	
1750.0	1750.0	0.00	0.00	0.0	0.0	0.0	0.0	START NUDDGE (3°/100ft BUR)	
2255.5	2282.7	31.96	200.17	-135.9	-49.9	78.3	144.8	EOB TO 31.96° INC	
5771.6	6427.2	31.96	200.17	-2195.5	-806.3	1265.2	2338.9	END OF TANGENT	
6277.1	6959.9	0.00	200.17	-2331.4	-856.2	1343.5	2483.6	EOD TO VERTICAL	
6307.1	6989.9	0.00	0.00	-2331.4	-856.2	1343.5	2483.6	KOP (10°/100ft BUR)	
6880.0	7889.9	90.00	273.26	-2298.8	-1428.2	1894.7	3056.6	7" ICP - DT-MARTINEZ 2-5-6	
6880.0	14969.8	90.00	273.25	-1896.6	-8496.7	8705.8	10136.5	BHL - DT-MARTINEZ 2-5-6	

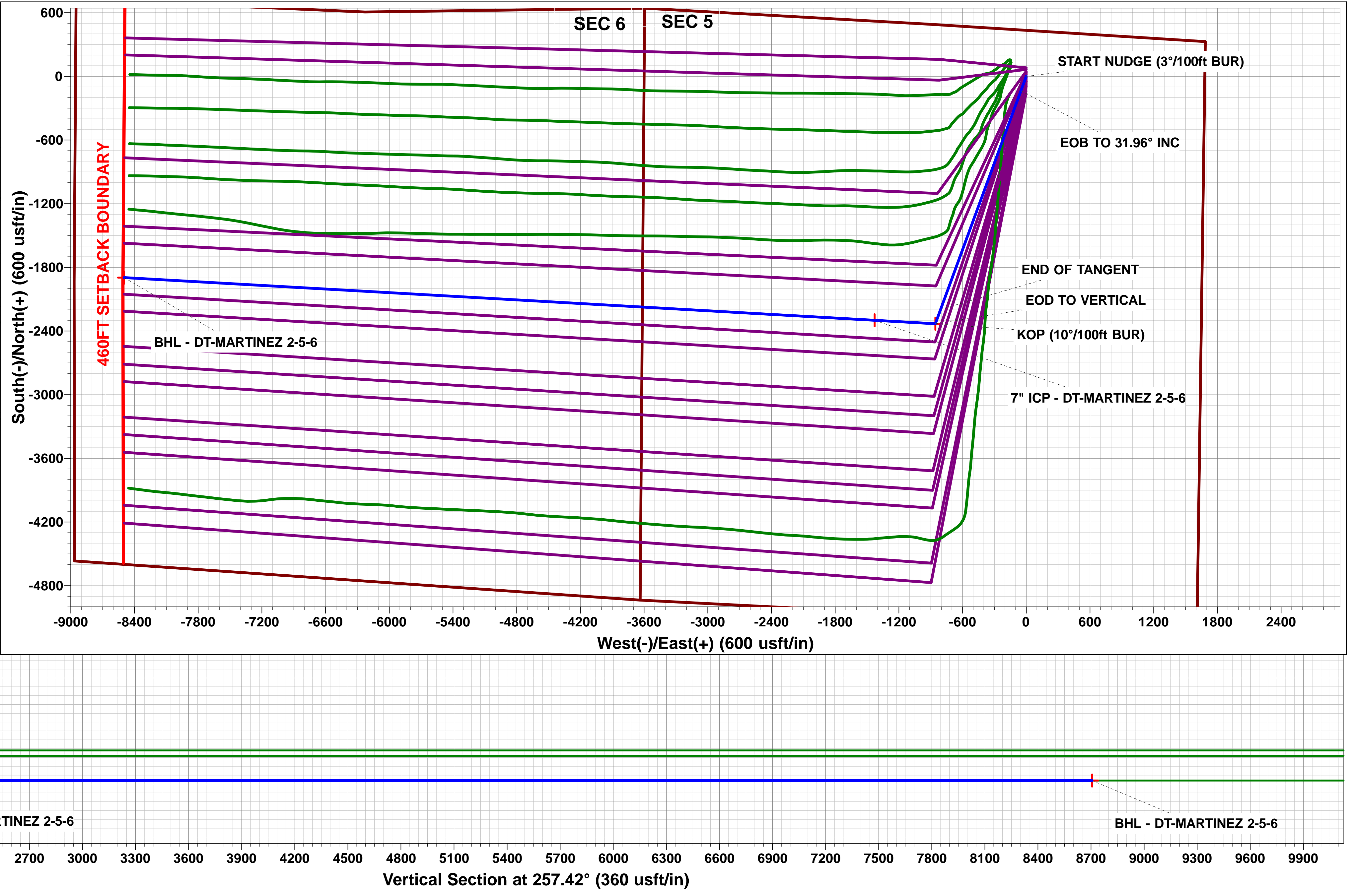
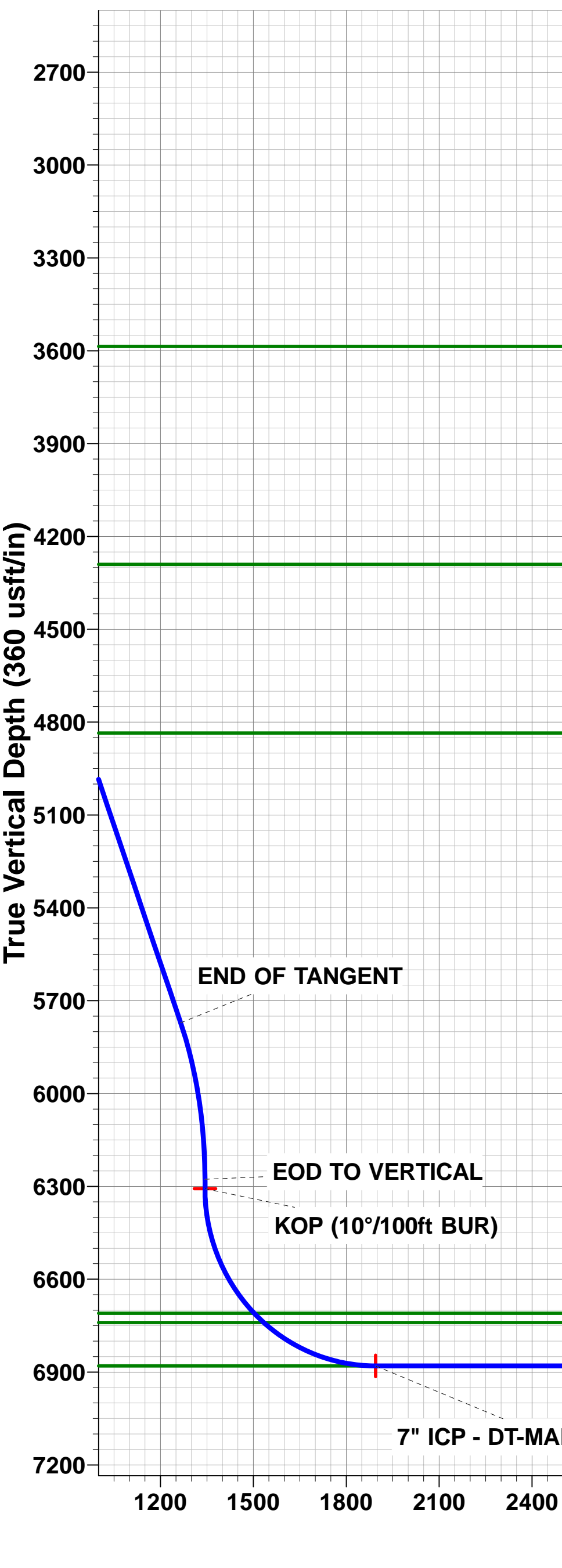
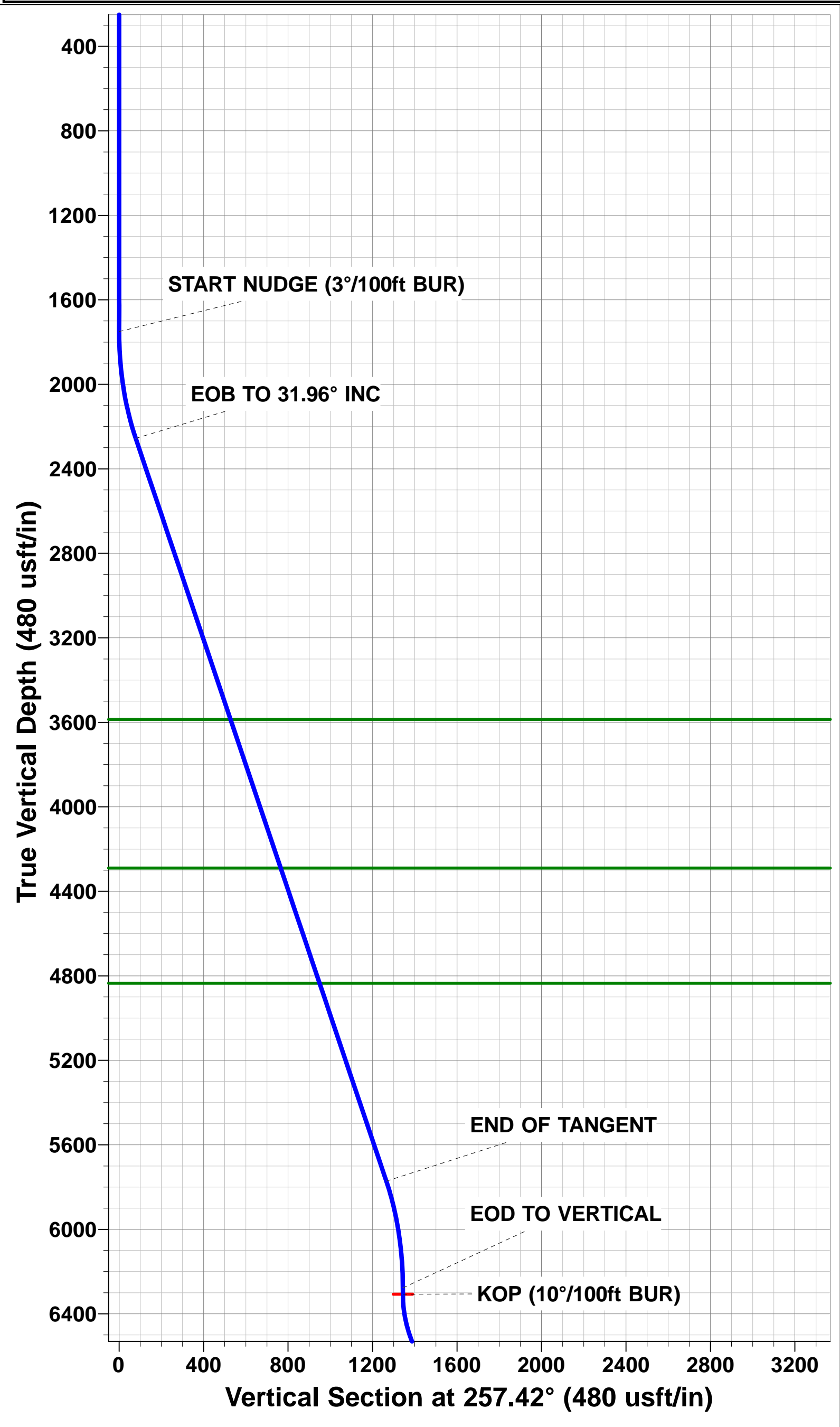
WELLBORE TARGET DETAILS (LAT/LONG)					
Name	TVD	+N/-S	+E/-W	Latitude	Longitude
KOP - DT-MARTINEZ 2-5-6	6307.1	-2331.4	-856.2	40.428911	-104.686805
7" ICP - DT-MARTINEZ 2-5-6	6880.0	-2298.8	-1428.2	40.429000	-104.688860
BHL - DT-MARTINEZ 2-5-6	6880.0	-1896.6	-8496.7	40.430100	-104.714250



FORMATION TOP DETAILS		
TVDPath	MDPath	Formation
3586.0	3851.0	PARKMAN
4290.0	4680.8	SUSSEX
4835.0	5323.2	SHANNON
6710.0	7436.8	SHARON SPRINGS
6740.0	7480.7	NIOBRARA
6880.0	7889.9	NIO B TARGET

Azimuths to True North
Magnetic North: 8.37°

Magnetic Field
Strength: 52801.4snT
Dip Angle: 66.97°
Date: 08/11/2014
Model: IGRF2010



Planning Report



Database:	EDM 5000.1 Single User Db	Local Co-ordinate Reference:	Well DT-MARTINEZ 2-5-6
Company:	EXTRACTION OIL & GAS	TVD Reference:	KB-EST @ 4657.0usft (SAV 802)
Project:	WELD COUNTY, COLORADO (NAD 83)	MD Reference:	KB-EST @ 4657.0usft (SAV 802)
Site:	NW NE SEC. 5 T5N R65W 6th P.M.	North Reference:	True
Well:	DT-MARTINEZ 2-5-6	Survey Calculation Method:	Minimum Curvature
Wellbore:	ORIGINAL WELLBORE		
Design:	PROPOSAL #2		

Project	WELD COUNTY, COLORADO (NAD 83)		
Map System:	US State Plane 1983	System Datum:	Mean Sea Level
Geo Datum:	North American Datum 1983		
Map Zone:	Colorado Northern Zone		Using geodetic scale factor

Site		NW NE SEC. 5 T5N R65W 6th P.M.			
Site Position:		Northing:	1,402,409.16 usft	Latitude:	40.435150
From:	Lat/Long	Easting:	3,226,987.53 usft	Longitude:	-104.684560
Position Uncertainty:	0.0 usft	Slot Radius:	1.10000 ft	Grid Convergence:	0.53 °

Well	DT-MARTINEZ 2-5-6					
Well Position	+N-S	58.3 usft	Northing:	1,402,469.56 usfi	Latitude:	40.435310
	+E-W	231.1 usft	Easting:	3,227,218.03 usfi	Longitude:	-104.683730
Position Uncertainty		0.0 usft	Wellhead Elevation:	usfi	Ground Level:	4,641.8 usft

Wellbore	ORIGINAL WELLBORE				
Magnetics	Model Name	Sample Date	Declination (°)	Dip Angle (°)	Field Strength (nT)
	IGRF2010	08/11/2014	8.37	66.97	52,801

Design	PROPOSAL #2			
Audit Notes:				
Version:	Phase:	PROTOTYPE	Tie On Depth:	0.0
Vertical Section:	Depth From (TVD) (usft)	+N-S (usft)	+E-W (usft)	Direction (°)
	0.0	0.0	0.0	257.42

Plan Sections											
MD (usft)	Inc (°)	Azi (°)	Vertical Depth	SS (usft)	+N-S (usft)	+E-W (usft)	Dogleg Rate (°/100usf)	Build Rate (°/100usf)	Turn Rate (°/100usf)	TFO (°)	Target
0.0	0.00	0.00	0.0	-4,657.0	0.0	0.0	0.00	0.00	0.00	0.00	
1,750.0	0.00	0.00	1,750.0	-2,907.0	0.0	0.0	0.00	0.00	0.00	0.00	
2,282.7	31.96	200.17	2,255.5	-2,401.5	-135.9	-49.9	6.00	6.00	0.00	200.17	
6,427.2	31.96	200.17	5,771.6	1,114.6	-2,195.5	-806.3	0.00	0.00	0.00	0.00	
6,959.9	0.00	0.00	6,277.1	1,620.1	-2,331.4	-856.2	6.00	-6.00	0.00	180.00	
6,989.9	0.00	0.00	6,307.1	1,650.1	-2,331.4	-856.2	0.00	0.00	0.00	0.00	KOP - DT-MARTINI
7,889.9	90.00	273.26	6,880.0	2,223.0	-2,298.8	-1,428.2	10.00	10.00	-9.64	273.26	7" ICP - DT-MARTI
14,969.8	90.00	273.25	6,880.0	2,223.0	-1,896.6	-8,496.7	0.00	0.00	0.00	-119.23	BHL - DT-MARTINE

Planning Report



Database:	EDM 5000.1 Single User Db	Local Co-ordinate Reference:	Well DT-MARTINEZ 2-5-6
Company:	EXTRACTION OIL & GAS	TVD Reference:	KB-EST @ 4657.0usft (SAV 802)
Project:	WELD COUNTY, COLORADO (NAD 83)	MD Reference:	KB-EST @ 4657.0usft (SAV 802)
Site:	NW NE SEC. 5 T5N R65W 6th P.M.	North Reference:	True
Well:	DT-MARTINEZ 2-5-6	Survey Calculation Method:	Minimum Curvature
Wellbore:	ORIGINAL WELLBORE		
Design:	PROPOSAL #2		

Planned Survey										
MD (usft)	Inc (°)	Azi (°)	TVD (usft)	SS (usft)	+N/-S (usft)	+E/-W (usft)	Vertical Section (usft)	Dogleg Rate (°/100usft)	Build Rate (°/100usft)	Turn Rate (°/100usft)
0.0	0.00	0.00	0.0	4,657.00	0.0	0.0	0.0	0.00	0.00	0.00
100.0	0.00	0.00	100.0	4,557.00	0.0	0.0	0.0	0.00	0.00	0.00
200.0	0.00	0.00	200.0	4,457.00	0.0	0.0	0.0	0.00	0.00	0.00
300.0	0.00	0.00	300.0	4,357.00	0.0	0.0	0.0	0.00	0.00	0.00
400.0	0.00	0.00	400.0	4,257.00	0.0	0.0	0.0	0.00	0.00	0.00
500.0	0.00	0.00	500.0	4,157.00	0.0	0.0	0.0	0.00	0.00	0.00
600.0	0.00	0.00	600.0	4,057.00	0.0	0.0	0.0	0.00	0.00	0.00
700.0	0.00	0.00	700.0	3,957.00	0.0	0.0	0.0	0.00	0.00	0.00
800.0	0.00	0.00	800.0	3,857.00	0.0	0.0	0.0	0.00	0.00	0.00
900.0	0.00	0.00	900.0	3,757.00	0.0	0.0	0.0	0.00	0.00	0.00
1,000.0	0.00	0.00	1,000.0	3,657.00	0.0	0.0	0.0	0.00	0.00	0.00
1,100.0	0.00	0.00	1,100.0	3,557.00	0.0	0.0	0.0	0.00	0.00	0.00
1,200.0	0.00	0.00	1,200.0	3,457.00	0.0	0.0	0.0	0.00	0.00	0.00
1,300.0	0.00	0.00	1,300.0	3,357.00	0.0	0.0	0.0	0.00	0.00	0.00
1,400.0	0.00	0.00	1,400.0	3,257.00	0.0	0.0	0.0	0.00	0.00	0.00
1,500.0	0.00	0.00	1,500.0	3,157.00	0.0	0.0	0.0	0.00	0.00	0.00
1,600.0	0.00	0.00	1,600.0	3,057.00	0.0	0.0	0.0	0.00	0.00	0.00
1,700.0	0.00	0.00	1,700.0	2,957.00	0.0	0.0	0.0	0.00	0.00	0.00
START NUDGE (3°/100ft BUR)										
1,750.0	0.00	0.00	1,750.0	2,907.00	0.0	0.0	0.0	0.00	0.00	0.00
1,800.0	3.00	200.17	1,800.0	2,857.02	-1.2	-0.5	0.7	6.00	6.00	0.00
1,900.0	9.00	200.17	1,899.4	2,757.62	-11.0	-4.1	6.4	6.00	6.00	0.00
2,000.0	15.00	200.17	1,997.2	2,659.85	-30.5	-11.2	17.6	6.00	6.00	0.00
2,100.0	21.00	200.17	2,092.2	2,564.78	-59.5	-21.9	34.3	6.00	6.00	0.00
2,200.0	27.00	200.17	2,183.5	2,473.47	-97.7	-35.9	56.3	6.00	6.00	0.00
EOB TO 31.96° INC										
2,282.7	31.96	200.17	2,255.5	2,401.50	-135.9	-49.9	78.3	6.00	6.00	0.00
2,300.0	31.96	200.17	2,270.2	2,386.82	-144.5	-53.1	83.3	0.02	0.02	0.00
2,400.0	31.96	200.17	2,355.0	2,301.99	-194.2	-71.3	111.9	0.00	0.00	0.00
2,500.0	31.96	200.17	2,439.9	2,217.15	-243.9	-89.6	140.5	0.00	0.00	0.00
2,600.0	31.96	200.17	2,524.7	2,132.31	-293.6	-107.8	169.2	0.00	0.00	0.00
2,700.0	31.96	200.17	2,609.5	2,047.47	-343.3	-126.1	197.8	0.00	0.00	0.00
2,800.0	31.96	200.17	2,694.4	1,962.64	-393.0	-144.3	226.5	0.00	0.00	0.00
2,900.0	31.96	200.17	2,779.2	1,877.80	-442.7	-162.6	255.1	0.00	0.00	0.00
3,000.0	31.96	200.17	2,864.0	1,792.96	-492.4	-180.8	283.7	0.00	0.00	0.00
3,100.0	31.96	200.17	2,948.9	1,708.13	-542.0	-199.1	312.4	0.00	0.00	0.00
3,200.0	31.96	200.17	3,033.7	1,623.29	-591.7	-217.3	341.0	0.00	0.00	0.00
3,300.0	31.96	200.17	3,118.5	1,538.45	-641.4	-235.6	369.6	0.00	0.00	0.00
3,400.0	31.96	200.17	3,203.4	1,453.61	-691.1	-253.8	398.3	0.00	0.00	0.00
3,500.0	31.96	200.17	3,288.2	1,368.78	-740.8	-272.1	426.9	0.00	0.00	0.00
3,600.0	31.96	200.17	3,373.1	1,283.94	-790.5	-290.3	455.6	0.00	0.00	0.00
3,700.0	31.96	200.17	3,457.9	1,199.10	-840.2	-308.6	484.2	0.00	0.00	0.00
3,800.0	31.96	200.17	3,542.7	1,114.26	-889.9	-326.8	512.8	0.00	0.00	0.00
PARKMAN										
3,851.0	31.96	200.17	3,586.0	1,071.00	-915.3	-336.1	527.4	0.00	0.00	0.00
3,900.0	31.96	200.17	3,627.6	1,029.43	-939.6	-345.1	541.5	0.00	0.00	0.00
4,000.0	31.96	200.17	3,712.4	944.59	-989.3	-363.3	570.1	0.00	0.00	0.00
4,100.0	31.96	200.17	3,797.2	859.75	-1,039.0	-381.6	598.7	0.00	0.00	0.00
4,200.0	31.96	200.17	3,882.1	774.91	-1,088.7	-399.8	627.4	0.00	0.00	0.00
4,300.0	31.96	200.17	3,966.9	690.08	-1,138.4	-418.1	656.0	0.00	0.00	0.00
4,400.0	31.96	200.17	4,051.8	605.24	-1,188.1	-436.3	684.7	0.00	0.00	0.00
4,500.0	31.96	200.17	4,136.6	520.40	-1,237.8	-454.6	713.3	0.00	0.00	0.00
4,600.0	31.96	200.17	4,221.4	435.56	-1,287.5	-472.8	741.9	0.00	0.00	0.00

Database:	EDM 5000.1 Single User Db	Local Co-ordinate Reference:	Well DT-MARTINEZ 2-5-6
Company:	EXTRACTION OIL & GAS	TVD Reference:	KB-EST @ 4657.0usft (SAV 802)
Project:	WELD COUNTY, COLORADO (NAD 83)	MD Reference:	KB-EST @ 4657.0usft (SAV 802)
Site:	NW NE SEC. 5 T5N R65W 6th P.M.	North Reference:	True
Well:	DT-MARTINEZ 2-5-6	Survey Calculation Method:	Minimum Curvature
Wellbore:	ORIGINAL WELLBORE		
Design:	PROPOSAL #2		

Planned Survey

MD (usft)	Inc (°)	Azi (°)	TVD (usft)	SS (usft)	+N/-S (usft)	+E/-W (usft)	Vertical Section (usft)	Dogleg Rate (°/100usft)	Build Rate (°/100usft)	Turn Rate (°/100usft)
SUSSEX										
4,680.8	31.96	200.17	4,290.0	367.00	-1,327.6	-487.6	765.1	0.00	0.00	0.00
4,700.0	31.96	200.17	4,306.3	350.73	-1,337.2	-491.1	770.6	0.00	0.00	0.00
4,800.0	31.96	200.17	4,391.1	265.89	-1,386.9	-509.3	799.2	0.00	0.00	0.00
4,900.0	31.96	200.17	4,475.9	181.05	-1,436.5	-527.6	827.9	0.00	0.00	0.00
5,000.0	31.96	200.17	4,560.8	96.21	-1,486.2	-545.8	856.5	0.00	0.00	0.00
5,100.0	31.96	200.17	4,645.6	11.38	-1,535.9	-564.1	885.1	0.00	0.00	0.00
5,200.0	31.96	200.17	4,730.5	-73.46	-1,585.6	-582.3	913.8	0.00	0.00	0.00
5,300.0	31.96	200.17	4,815.3	-158.30	-1,635.3	-600.6	942.4	0.00	0.00	0.00
SHANNON										
5,323.2	31.96	200.17	4,835.0	-178.00	-1,646.9	-604.8	949.1	0.00	0.00	0.00
5,400.0	31.96	200.17	4,900.1	-243.14	-1,685.0	-618.8	971.0	0.00	0.00	0.00
5,500.0	31.96	200.17	4,985.0	-327.97	-1,734.7	-637.1	999.7	0.00	0.00	0.00
5,600.0	31.96	200.17	5,069.8	-412.81	-1,784.4	-655.3	1,028.3	0.00	0.00	0.00
5,700.0	31.96	200.17	5,154.6	-497.65	-1,834.1	-673.6	1,057.0	0.00	0.00	0.00
5,800.0	31.96	200.17	5,239.5	-582.49	-1,883.8	-691.8	1,085.6	0.00	0.00	0.00
5,900.0	31.96	200.17	5,324.3	-667.32	-1,933.5	-710.1	1,114.2	0.00	0.00	0.00
6,000.0	31.96	200.17	5,409.2	-752.16	-1,983.2	-728.3	1,142.9	0.00	0.00	0.00
6,100.0	31.96	200.17	5,494.0	-837.00	-2,032.9	-746.6	1,171.5	0.00	0.00	0.00
6,200.0	31.96	200.17	5,578.8	-921.84	-2,082.6	-764.8	1,200.1	0.00	0.00	0.00
6,300.0	31.96	200.17	5,663.7	-1,006.67	-2,132.3	-783.1	1,228.8	0.00	0.00	0.00
6,400.0	31.96	200.17	5,748.5	-1,091.51	-2,182.0	-801.3	1,257.4	0.00	0.00	0.00
END OF TANGENT										
6,427.2	31.96	200.17	5,771.6	-1,114.59	-2,195.5	-806.3	1,265.2	0.00	0.00	0.00
6,500.0	27.60	200.17	5,834.8	-1,177.76	-2,229.4	-818.7	1,284.8	6.00	-6.00	0.00
6,600.0	21.60	200.17	5,925.6	-1,268.64	-2,268.5	-833.1	1,307.3	6.00	-6.00	0.00
6,700.0	15.60	200.17	6,020.4	-1,363.38	-2,298.4	-844.1	1,324.5	6.00	-6.00	0.00
6,800.0	9.60	200.17	6,117.9	-1,460.93	-2,318.8	-851.6	1,336.3	6.00	-6.00	0.00
6,900.0	3.60	200.17	6,217.2	-1,560.22	-2,329.6	-855.5	1,342.5	6.00	-6.00	0.00
EOD TO VERTICAL										
6,959.9	0.00	200.17	6,277.1	-1,620.08	-2,331.4	-856.2	1,343.5	6.00	-6.00	0.00
KOP (10°/100ft BUR)										
6,989.9	0.00	200.17	6,307.1	-1,650.08	-2,331.4	-856.2	1,343.5	0.00	0.00	0.00
7,000.0	1.01	273.26	6,317.2	-1,660.18	-2,331.4	-856.3	1,343.6	9.98	9.98	0.00
7,100.0	11.01	273.26	6,416.5	-1,759.51	-2,330.8	-866.7	1,353.7	10.00	10.00	0.00
7,200.0	21.01	273.26	6,512.5	-1,855.51	-2,329.2	-894.2	1,380.2	10.00	10.00	0.00
7,300.0	31.01	273.26	6,602.3	-1,945.26	-2,326.7	-937.9	1,422.3	10.00	10.00	0.00
7,400.0	41.01	273.26	6,683.0	-2,026.05	-2,323.4	-996.6	1,478.8	10.00	10.00	0.00
SHARON SPRINGS										
7,436.8	44.69	273.26	6,710.0	-2,053.00	-2,322.0	-1,021.5	1,502.8	10.00	10.00	0.00
NIOBRARA										
7,480.7	49.08	273.26	6,740.0	-2,083.00	-2,320.1	-1,053.5	1,533.7	10.00	10.00	0.00
7,500.0	51.01	273.26	6,752.4	-2,095.41	-2,319.3	-1,068.3	1,547.9	10.00	10.00	0.00
7,600.0	61.01	273.26	6,808.2	-2,151.24	-2,314.6	-1,151.0	1,627.6	10.00	10.00	0.00
7,700.0	71.02	273.26	6,848.8	-2,191.84	-2,309.4	-1,242.1	1,715.4	10.00	10.00	0.00
7,800.0	81.02	273.26	6,873.0	-2,215.97	-2,303.9	-1,338.8	1,808.6	10.00	10.00	0.00
7" ICP - DT-MARTINEZ 2-5-6 - NIO B TARGET										
7,889.9	90.00	273.26	6,880.0	-2,223.00	-2,298.8	-1,428.2	1,894.7	10.00	10.00	0.00
7,900.0	90.00	273.26	6,880.0	-2,223.00	-2,298.2	-1,438.3	1,904.4	0.00	0.00	0.00
8,000.0	90.00	273.26	6,880.0	-2,222.99	-2,292.5	-1,538.2	2,000.6	0.00	0.00	0.00
8,100.0	90.00	273.26	6,880.0	-2,222.99	-2,286.8	-1,638.0	2,096.8	0.00	0.00	0.00
8,200.0	90.00	273.26	6,880.0	-2,222.98	-2,281.1	-1,737.8	2,193.0	0.00	0.00	0.00
8,300.0	90.00	273.26	6,880.0	-2,222.97	-2,275.4	-1,837.7	2,289.2	0.00	0.00	0.00

Planning Report



Database:	EDM 5000.1 Single User Db	Local Co-ordinate Reference:	Well DT-MARTINEZ 2-5-6
Company:	EXTRACTION OIL & GAS	TVD Reference:	KB-EST @ 4657.0usft (SAV 802)
Project:	WELD COUNTY, COLORADO (NAD 83)	MD Reference:	KB-EST @ 4657.0usft (SAV 802)
Site:	NW NE SEC. 5 T5N R65W 6th P.M.	North Reference:	True
Well:	DT-MARTINEZ 2-5-6	Survey Calculation Method:	Minimum Curvature
Wellbore:	ORIGINAL WELLBORE		
Design:	PROPOSAL #2		

Planned Survey										
MD (usft)	Inc (°)	Azi (°)	TVD (usft)	SS (usft)	+N/-S (usft)	+E/-W (usft)	Vertical Section (usft)	Dogleg Rate (°/100usft)	Build Rate (°/100usft)	Turn Rate (°/100usft)
8,400.0	90.00	273.26	6,880.0	-2,222.97	-2,269.7	-1,937.5	2,385.4	0.00	0.00	0.00
8,500.0	90.00	273.26	6,880.0	-2,222.96	-2,264.0	-2,037.3	2,481.6	0.00	0.00	0.00
8,600.0	90.00	273.26	6,880.0	-2,222.95	-2,258.3	-2,137.2	2,577.8	0.00	0.00	0.00
8,700.0	90.00	273.26	6,879.9	-2,222.95	-2,252.7	-2,237.0	2,674.0	0.00	0.00	0.00
8,800.0	90.00	273.26	6,879.9	-2,222.94	-2,247.0	-2,336.9	2,770.2	0.00	0.00	0.00
8,900.0	90.00	273.26	6,879.9	-2,222.94	-2,241.3	-2,436.7	2,866.4	0.00	0.00	0.00
9,000.0	90.00	273.26	6,879.9	-2,222.93	-2,235.6	-2,536.5	2,962.6	0.00	0.00	0.00
9,100.0	90.00	273.26	6,879.9	-2,222.93	-2,229.9	-2,636.4	3,058.8	0.00	0.00	0.00
9,200.0	90.00	273.26	6,879.9	-2,222.92	-2,224.2	-2,736.2	3,155.0	0.00	0.00	0.00
9,300.0	90.00	273.26	6,879.9	-2,222.92	-2,218.5	-2,836.0	3,251.2	0.00	0.00	0.00
9,400.0	90.00	273.26	6,879.9	-2,222.92	-2,212.8	-2,935.9	3,347.4	0.00	0.00	0.00
9,500.0	90.00	273.26	6,879.9	-2,222.91	-2,207.1	-3,035.7	3,443.6	0.00	0.00	0.00
9,600.0	90.00	273.26	6,879.9	-2,222.91	-2,201.5	-3,135.6	3,539.8	0.00	0.00	0.00
9,700.0	90.00	273.26	6,879.9	-2,222.90	-2,195.8	-3,235.4	3,636.1	0.00	0.00	0.00
9,800.0	90.00	273.26	6,879.9	-2,222.90	-2,190.1	-3,335.2	3,732.3	0.00	0.00	0.00
9,900.0	90.00	273.26	6,879.9	-2,222.90	-2,184.4	-3,435.1	3,828.5	0.00	0.00	0.00
10,000.0	90.00	273.26	6,879.9	-2,222.89	-2,178.7	-3,534.9	3,924.7	0.00	0.00	0.00
10,100.0	90.00	273.26	6,879.9	-2,222.89	-2,173.0	-3,634.8	4,020.9	0.00	0.00	0.00
10,200.0	90.00	273.26	6,879.9	-2,222.89	-2,167.3	-3,734.6	4,117.1	0.00	0.00	0.00
10,300.0	90.00	273.26	6,879.9	-2,222.89	-2,161.7	-3,834.4	4,213.3	0.00	0.00	0.00
10,400.0	90.00	273.26	6,879.9	-2,222.89	-2,156.0	-3,934.3	4,309.5	0.00	0.00	0.00
10,500.0	90.00	273.26	6,879.9	-2,222.88	-2,150.3	-4,034.1	4,405.7	0.00	0.00	0.00
10,600.0	90.00	273.26	6,879.9	-2,222.88	-2,144.6	-4,133.9	4,501.9	0.00	0.00	0.00
10,700.0	90.00	273.26	6,879.9	-2,222.88	-2,138.9	-4,233.8	4,598.1	0.00	0.00	0.00
10,800.0	90.00	273.26	6,879.9	-2,222.88	-2,133.2	-4,333.6	4,694.3	0.00	0.00	0.00
10,900.0	90.00	273.26	6,879.9	-2,222.88	-2,127.6	-4,433.5	4,790.5	0.00	0.00	0.00
11,000.0	90.00	273.26	6,879.9	-2,222.88	-2,121.9	-4,533.3	4,886.7	0.00	0.00	0.00
11,100.0	90.00	273.26	6,879.9	-2,222.88	-2,116.2	-4,633.1	4,982.9	0.00	0.00	0.00
11,200.0	90.00	273.26	6,879.9	-2,222.88	-2,110.5	-4,733.0	5,079.1	0.00	0.00	0.00
11,300.0	90.00	273.26	6,879.9	-2,222.87	-2,104.8	-4,832.8	5,175.3	0.00	0.00	0.00
11,400.0	90.00	273.26	6,879.9	-2,222.87	-2,099.2	-4,932.7	5,271.5	0.00	0.00	0.00
11,500.0	90.00	273.26	6,879.9	-2,222.87	-2,093.5	-5,032.5	5,367.7	0.00	0.00	0.00
11,600.0	90.00	273.26	6,879.9	-2,222.87	-2,087.8	-5,132.3	5,463.9	0.00	0.00	0.00
11,700.0	90.00	273.26	6,879.9	-2,222.88	-2,082.1	-5,232.2	5,560.1	0.00	0.00	0.00
11,800.0	90.00	273.26	6,879.9	-2,222.88	-2,076.4	-5,332.0	5,656.3	0.00	0.00	0.00
11,900.0	90.00	273.26	6,879.9	-2,222.88	-2,070.8	-5,431.8	5,752.5	0.00	0.00	0.00
12,000.0	90.00	273.26	6,879.9	-2,222.88	-2,065.1	-5,531.7	5,848.7	0.00	0.00	0.00
12,100.0	90.00	273.25	6,879.9	-2,222.88	-2,059.4	-5,631.5	5,944.9	0.00	0.00	0.00
12,200.0	90.00	273.25	6,879.9	-2,222.88	-2,053.7	-5,731.4	6,041.1	0.00	0.00	0.00
12,300.0	90.00	273.25	6,879.9	-2,222.88	-2,048.0	-5,831.2	6,137.3	0.00	0.00	0.00
12,400.0	90.00	273.25	6,879.9	-2,222.88	-2,042.4	-5,931.0	6,233.5	0.00	0.00	0.00
12,500.0	90.00	273.25	6,879.9	-2,222.89	-2,036.7	-6,030.9	6,329.7	0.00	0.00	0.00
12,600.0	90.00	273.25	6,879.9	-2,222.89	-2,031.0	-6,130.7	6,425.9	0.00	0.00	0.00
12,700.0	90.00	273.25	6,879.9	-2,222.89	-2,025.3	-6,230.6	6,522.1	0.00	0.00	0.00
12,800.0	90.00	273.25	6,879.9	-2,222.89	-2,019.7	-6,330.4	6,618.3	0.00	0.00	0.00
12,900.0	90.00	273.25	6,879.9	-2,222.90	-2,014.0	-6,430.2	6,714.5	0.00	0.00	0.00
13,000.0	90.00	273.25	6,879.9	-2,222.90	-2,008.3	-6,530.1	6,810.7	0.00	0.00	0.00
13,100.0	90.00	273.25	6,879.9	-2,222.90	-2,002.6	-6,629.9	6,907.0	0.00	0.00	0.00
13,200.0	90.00	273.25	6,879.9	-2,222.91	-1,997.0	-6,729.7	7,003.2	0.00	0.00	0.00
13,300.0	90.00	273.25	6,879.9	-2,222.91	-1,991.3	-6,829.6	7,099.4	0.00	0.00	0.00
13,400.0	90.00	273.25	6,879.9	-2,222.91	-1,985.6	-6,929.4	7,195.6	0.00	0.00	0.00
13,500.0	90.00	273.25	6,879.9	-2,222.92	-1,979.9	-7,029.3	7,291.8	0.00	0.00	0.00
13,600.0	90.00	273.25	6,879.9	-2,222.92	-1,974.3	-7,129.1	7,388.0	0.00	0.00	0.00
13,700.0	90.00	273.25	6,879.9	-2,222.93	-1,968.6	-7,228.9	7,484.2	0.00	0.00	0.00

Database:	EDM 5000.1 Single User Db	Local Co-ordinate Reference:	Well DT-MARTINEZ 2-5-6
Company:	EXTRACTION OIL & GAS	TVD Reference:	KB-EST @ 4657.0usft (SAV 802)
Project:	WELD COUNTY, COLORADO (NAD 83)	MD Reference:	KB-EST @ 4657.0usft (SAV 802)
Site:	NW NE SEC. 5 T5N R65W 6th P.M.	North Reference:	True
Well:	DT-MARTINEZ 2-5-6	Survey Calculation Method:	Minimum Curvature
Wellbore:	ORIGINAL WELLBORE		
Design:	PROPOSAL #2		

Planned Survey

MD (usft)	Inc (°)	Azi (°)	TVD (usft)	SS (usft)	+N/-S (usft)	+E/-W (usft)	Vertical Section (usft)	Dogleg Rate (°/100usft)	Build Rate (°/100usft)	Turn Rate (°/100usft)
13,800.0	90.00	273.25	6,879.9	-2,222.93	-1,962.9	-7,328.8	7,580.4	0.00	0.00	0.00
13,900.0	90.00	273.25	6,879.9	-2,222.94	-1,957.3	-7,428.6	7,676.6	0.00	0.00	0.00
14,000.0	90.00	273.25	6,879.9	-2,222.94	-1,951.6	-7,528.5	7,772.8	0.00	0.00	0.00
14,100.0	90.00	273.25	6,879.9	-2,222.95	-1,945.9	-7,628.3	7,869.0	0.00	0.00	0.00
14,200.0	90.00	273.25	6,880.0	-2,222.95	-1,940.2	-7,728.1	7,965.2	0.00	0.00	0.00
14,300.0	90.00	273.25	6,880.0	-2,222.96	-1,934.6	-7,828.0	8,061.4	0.00	0.00	0.00
14,400.0	90.00	273.25	6,880.0	-2,222.96	-1,928.9	-7,927.8	8,157.6	0.00	0.00	0.00
14,500.0	90.00	273.25	6,880.0	-2,222.97	-1,923.2	-8,027.7	8,253.8	0.00	0.00	0.00
14,600.0	90.00	273.25	6,880.0	-2,222.98	-1,917.6	-8,127.5	8,350.0	0.00	0.00	0.00
14,700.0	90.00	273.25	6,880.0	-2,222.98	-1,911.9	-8,227.3	8,446.2	0.00	0.00	0.00
14,800.0	90.00	273.25	6,880.0	-2,222.99	-1,906.2	-8,327.2	8,542.4	0.00	0.00	0.00
14,900.0	90.00	273.25	6,880.0	-2,223.00	-1,900.6	-8,427.0	8,638.7	0.00	0.00	0.00
BHL - DT-MARTINEZ 2-5-6										
14,969.8	90.00	273.25	6,880.0	-2,223.00	-1,896.6	-8,496.7	8,705.8	0.00	0.00	0.00

Formations

MD (usft)	TVD (usft)	Name	Lithology	Dip (°)	Dip Direction (°)
3,851.0	3,586.0	PARKMAN			
4,680.8	4,290.0	SUSSEX			
5,323.2	4,835.0	SHANNON			
7,436.8	6,710.0	SHARON SPRINGS			
7,480.7	6,740.0	NIOBRARA			
7,889.9	6,880.0	NIO B TARGET			

Plan Annotations

MD (usft)	TVD (usft)	Local Coordinates		Comment
		+N/-S (usft)	+E/-W (usft)	
1,750.0	1,750.0	0.0	0.0	START NUDGE (3°/100ft BUR)
2,282.7	2,255.5	-135.9	-49.9	EOB TO 31.96° INC
6,427.2	5,771.6	-2,195.5	-806.3	END OF TANGENT
6,959.9	6,277.1	-2,331.4	-856.2	EOD TO VERTICAL
6,989.9	6,307.1	-2,331.4	-856.2	KOP (10°/100ft BUR)
7,889.9	6,880.0	-2,298.8	-1,428.2	7" ICP - DT-MARTINEZ 2-5-6
14,969.8	6,880.0	-1,896.6	-8,496.7	BHL - DT-MARTINEZ 2-5-6