

# **EXTRACTION OIL & GAS**

**WELD COUNTY, COLORADO (NAD 83)**

**NW NE SEC. 5 T5N R65W 6th P.M.**

**DT-HABITAT C3-5-6**

**ORIGINAL WELLBORE**

**17 November, 2014**

**Plan: PROPOSAL #2**

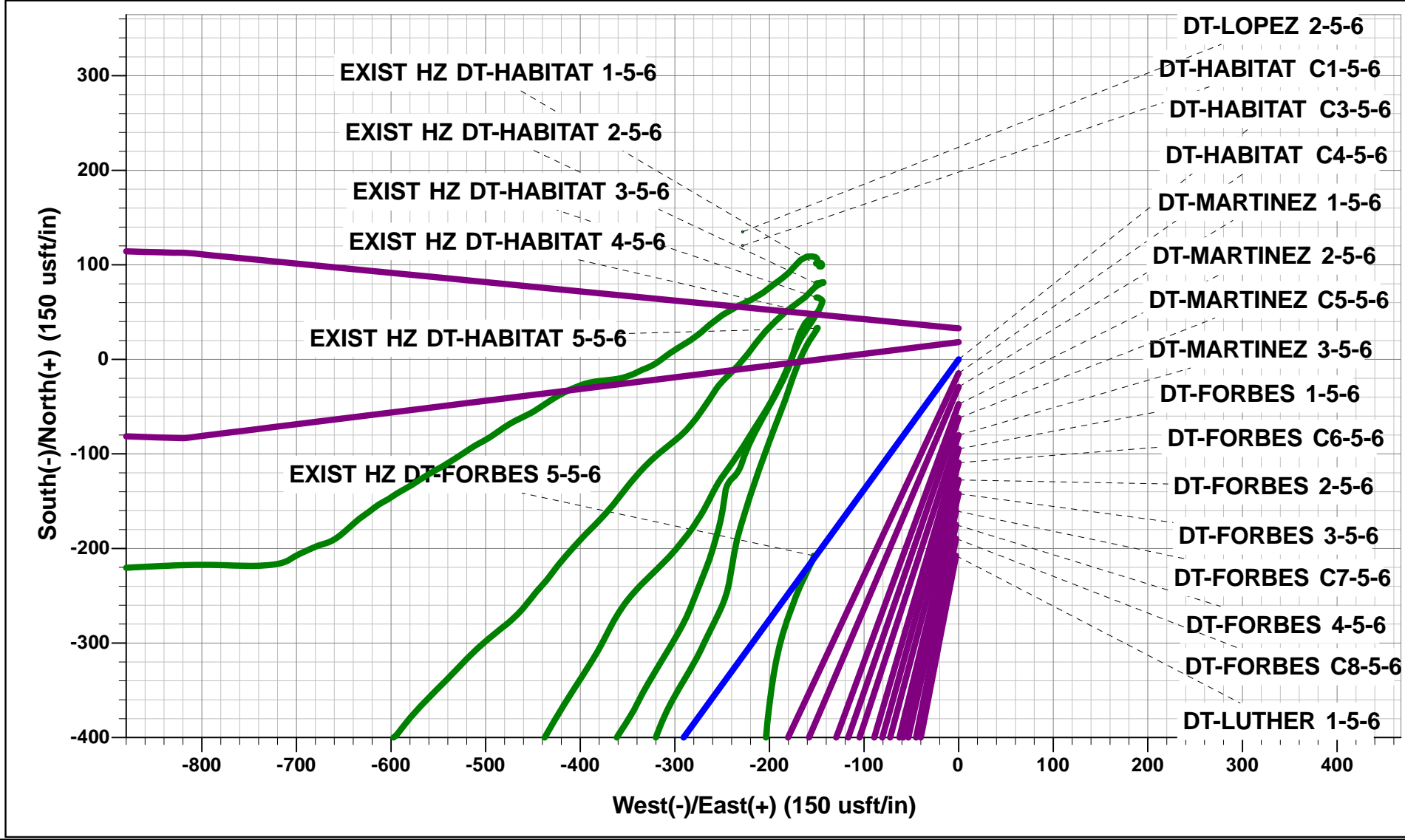




Project: WELD COUNTY, COLORADO (NAD 83)  
Site: NW NE SEC. 5 T5N R65W 6th P.M.  
Well: DT-HABITAT C3-5-6  
Wellbore: ORIGINAL WELLBORE  
Design: PROPOSAL #2

ANNOTATIONS									
TVD	MD	Inc	Azi	+N/-S	+E/-W	VSect	Dep	Annotation	
2050.0	2050.0	0.00	0.00	0.0	0.0	0.0	0.0	START NUDDGE (3°/100ft BUR)	
2739.8	2755.7	21.17	216.01	-104.3	-75.8	85.4	128.9	EOB TO 21.17° INC	
5747.4	5981.0	21.17	216.01	-1046.5	-760.5	857.0	1293.7	END OF TANGENT	
6437.1	6686.7	0.00	0.00	-1150.8	-836.3	942.4	1422.6	EOD TO VERTICAL	
6467.1	6716.7	0.00	0.00	-1150.8	-836.3	942.4	1422.6	KOP (10°/100ft BUR)	
7040.0	7616.6	90.00	272.51	-1125.7	-1408.7	1509.7	1995.5	7" ICP - DT-HABITAT C3-5-6	
7040.0	14705.5	90.00	272.52	-814.6	-8490.7	8529.7	9084.4	BHL - DT-HABITAT C3-5-6	

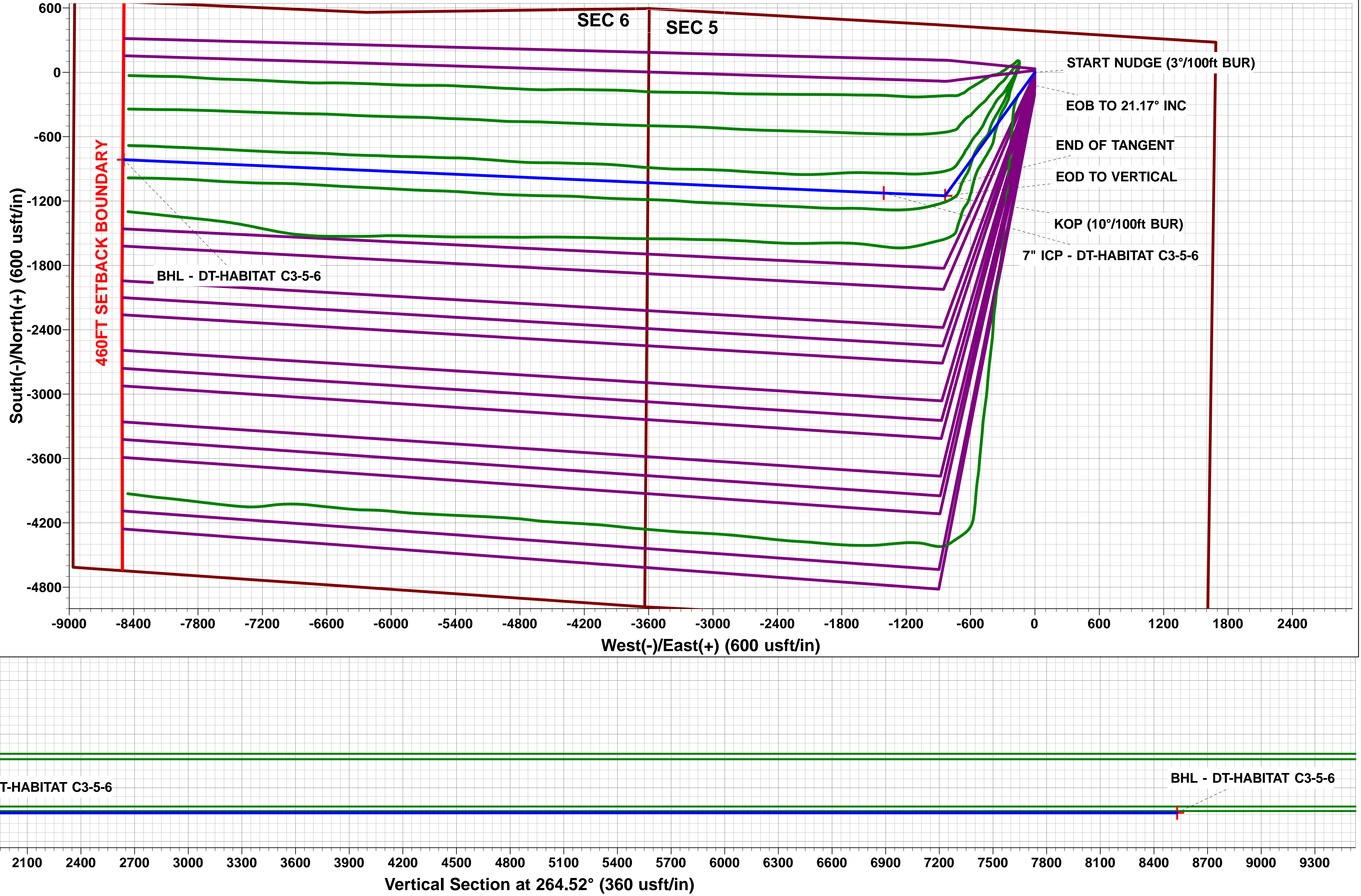
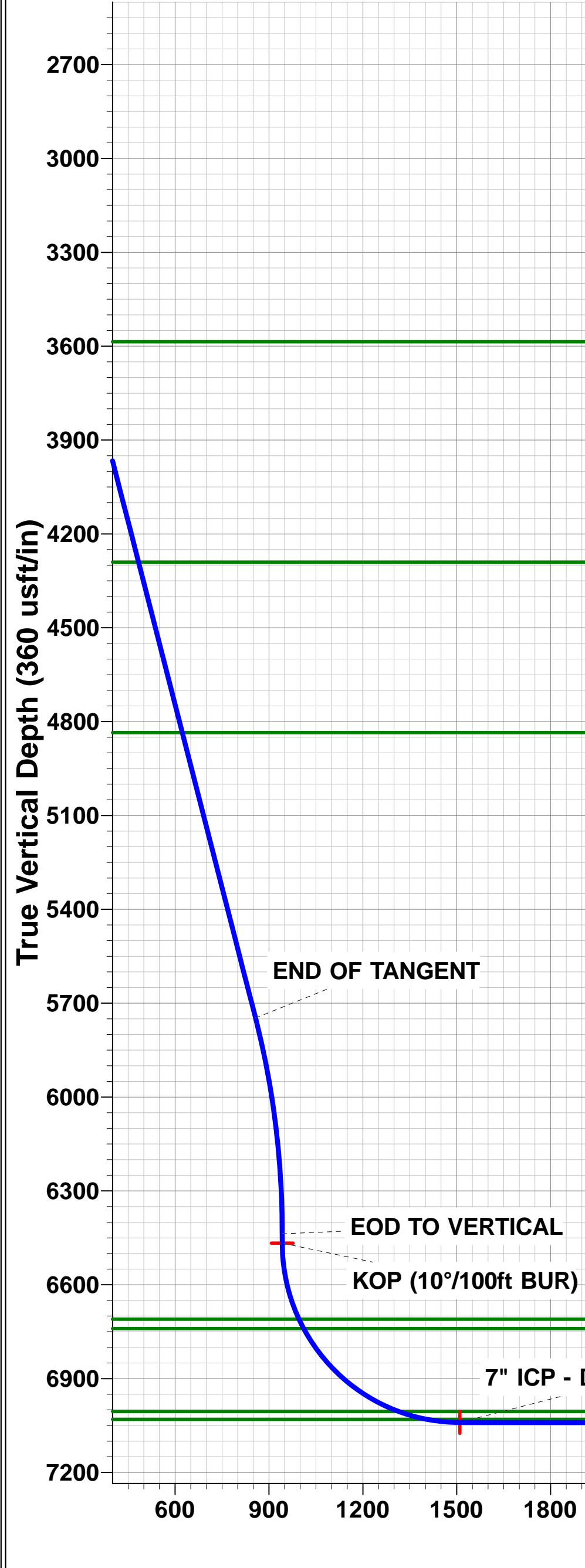
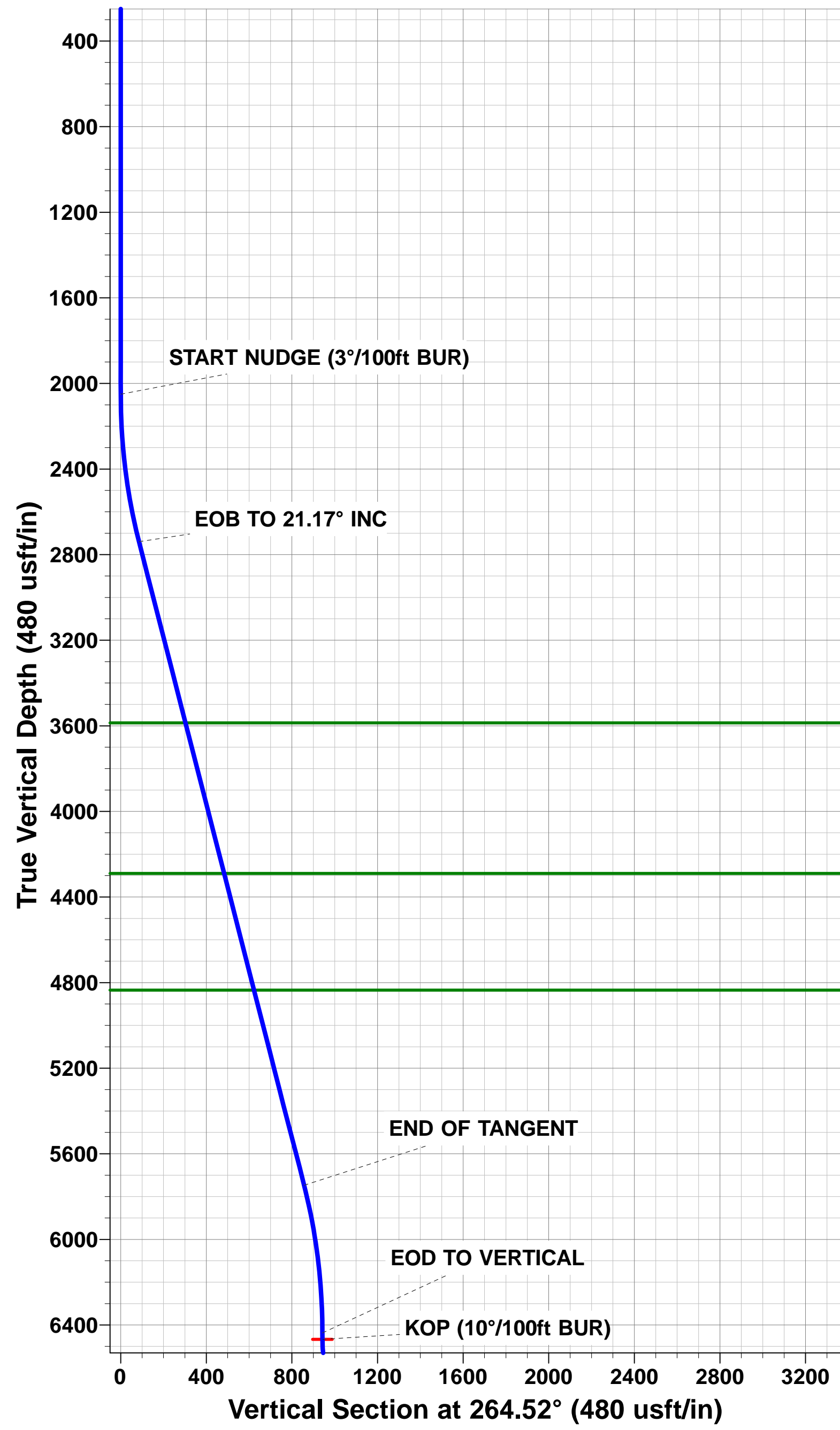
WELLBORE TARGET DETAILS (LAT/LONG)					
Name	TVD	+N/-S	+E/-W	Latitude	Longitude
KOP - DT-HABITAT C3-5-6	6467.1	-1150.8	-836.3	40.432281	-104.686734
7" ICP - DT-HABITAT C3-5-6	7040.0	-1125.7	-1408.6	40.432350	-104.688790
BHL - DT-HABITAT C3-5-6	7040.0	-814.6	-8490.7	40.433200	-104.714230



FORMATION TOP DETAILS		
TVDPath	MDPath	Formation
3586.0	3663.2	PARKMAN
4290.0	4418.1	SUSSEX
4835.0	5002.6	SHANNON
6710.0	6967.5	SHARON SPRINGS
6740.0	7001.1	NIOBRARA
7005.0	7415.3	FORT HAYS
7030.0	7509.4	CODELL

Azimuths to True North  
Magnetic North: 8.37°

Magnetic Field  
Strength: 52801.5nT  
Dip Angle: 66.97°  
Date: 08/11/2014  
Model: IGRF2010



# Planning Report



<b>Database:</b>	EDM 5000.1 Single User Db	<b>Local Co-ordinate Reference:</b>	Well DT-HABITAT C3-5-6
<b>Company:</b>	EXTRACTION OIL & GAS	<b>TVD Reference:</b>	KB-EST @ 4657.0usft (SAV 802)
<b>Project:</b>	WELD COUNTY, COLORADO (NAD 83)	<b>MD Reference:</b>	KB-EST @ 4657.0usft (SAV 802)
<b>Site:</b>	NW NE SEC. 5 T5N R65W 6th P.M.	<b>North Reference:</b>	True
<b>Well:</b>	DT-HABITAT C3-5-6	<b>Survey Calculation Method:</b>	Minimum Curvature
<b>Wellbore:</b>	ORIGINAL WELLBORE		
<b>Design:</b>	PROPOSAL #2		

<b>Project</b>	WELD COUNTY, COLORADO (NAD 83)		
<b>Map System:</b>	US State Plane 1983	<b>System Datum:</b>	Mean Sea Level
<b>Geo Datum:</b>	North American Datum 1983		
<b>Map Zone:</b>	Colorado Northern Zone		Using geodetic scale factor

<b>Site</b>	NW NE SEC. 5 T5N R65W 6th P.M.		
<b>Site Position:</b>		<b>Northing:</b>	1,402,409.16usft
<b>From:</b>	Lat/Long	<b>Easting:</b>	3,226,987.53usft
<b>Position Uncertainty:</b>	0.0 usft	<b>Slot Radius:</b>	1.10000ft
		<b>Latitude:</b>	40.435150
		<b>Longitude:</b>	-104.684560
		<b>Grid Convergence:</b>	0.53 °

<b>Well</b>	DT-HABITAT C3-5-6		
<b>Well Position</b>	<b>+N-S</b>	105.6 usft	<b>Northing:</b>
	<b>+E-W</b>	231.1 usft	<b>Easting:</b>
<b>Position Uncertainty</b>		0.0 usft	<b>Wellhead Elevation:</b>
			<b>Latitude:</b>
			<b>Longitude:</b>
			<b>Ground Level:</b>

<b>Wellbore</b>	ORIGINAL WELLBORE				
<b>Magnetics</b>	<b>Model Name</b>	<b>Sample Date</b>	<b>Declination (°)</b>	<b>Dip Angle (°)</b>	<b>Field Strength (nT)</b>
	IGRF2010	08/11/2014	8.37	66.97	52,802

<b>Design</b>	PROPOSAL #2			
<b>Audit Notes:</b>				
<b>Version:</b>	<b>Phase:</b>	PROTOTYPE	<b>Tie On Depth:</b>	0.0
<b>Vertical Section:</b>	<b>Depth From (TVD) (usft)</b>	<b>+N-S (usft)</b>	<b>+E-W (usft)</b>	<b>Direction (°)</b>
	0.0	0.0	0.0	264.52

<b>Plan Sections</b>											
MD (usft)	Inc (°)	Azi (°)	Vertical Depth	SS (usft)	+N-S (usft)	+E-W (usft)	Dogleg Rate (°/100usf)	Build Rate (°/100usf)	Turn Rate (°/100usf)	TFO (°)	Target
0.0	0.00	0.00	0.0	-4,657.0	0.0	0.0	0.00	0.00	0.00	0.00	
2,050.0	0.00	0.00	2,050.0	-2,607.0	0.0	0.0	0.00	0.00	0.00	0.00	
2,755.7	21.17	216.01	2,739.7	-1,917.3	-104.3	-75.8	3.00	3.00	0.00	216.01	
5,981.0	21.17	216.01	5,747.4	1,090.4	-1,046.5	-760.5	0.00	0.00	0.00	0.00	
6,686.7	0.00	0.00	6,437.1	1,780.1	-1,150.8	-836.3	3.00	-3.00	0.00	180.00	
6,716.7	0.00	0.00	6,467.1	1,810.1	-1,150.8	-836.3	0.00	0.00	0.00	0.00	KOP - DT-HABITA1
7,616.6	90.00	272.51	7,040.0	2,383.0	-1,125.7	-1,408.6	10.00	10.00	-9.72	272.51	7" ICP - DT-HABIT/
14,705.5	90.00	272.52	7,040.0	2,383.0	-814.6	-8,490.7	0.00	0.00	0.00	112.82	BHL - DT-HABITAT

# Planning Report



<b>Database:</b>	EDM 5000.1 Single User Db	<b>Local Co-ordinate Reference:</b>	Well DT-HABITAT C3-5-6
<b>Company:</b>	EXTRACTION OIL & GAS	<b>TVD Reference:</b>	KB-EST @ 4657.0usft (SAV 802)
<b>Project:</b>	WELD COUNTY, COLORADO (NAD 83)	<b>MD Reference:</b>	KB-EST @ 4657.0usft (SAV 802)
<b>Site:</b>	NW NE SEC. 5 T5N R65W 6th P.M.	<b>North Reference:</b>	True
<b>Well:</b>	DT-HABITAT C3-5-6	<b>Survey Calculation Method:</b>	Minimum Curvature
<b>Wellbore:</b>	ORIGINAL WELLBORE		
<b>Design:</b>	PROPOSAL #2		

## Planned Survey

MD (usft)	Inc (°)	Azi (°)	TVD (usft)	SS (usft)	+N/-S (usft)	+E/-W (usft)	Vertical Section (usft)	Dogleg Rate (°/100usft)	Build Rate (°/100usft)	Turn Rate (°/100usft)
0.0	0.00	0.00	0.0	4,657.00	0.0	0.0	0.0	0.00	0.00	0.00
100.0	0.00	0.00	100.0	4,557.00	0.0	0.0	0.0	0.00	0.00	0.00
200.0	0.00	0.00	200.0	4,457.00	0.0	0.0	0.0	0.00	0.00	0.00
300.0	0.00	0.00	300.0	4,357.00	0.0	0.0	0.0	0.00	0.00	0.00
400.0	0.00	0.00	400.0	4,257.00	0.0	0.0	0.0	0.00	0.00	0.00
500.0	0.00	0.00	500.0	4,157.00	0.0	0.0	0.0	0.00	0.00	0.00
600.0	0.00	0.00	600.0	4,057.00	0.0	0.0	0.0	0.00	0.00	0.00
700.0	0.00	0.00	700.0	3,957.00	0.0	0.0	0.0	0.00	0.00	0.00
800.0	0.00	0.00	800.0	3,857.00	0.0	0.0	0.0	0.00	0.00	0.00
900.0	0.00	0.00	900.0	3,757.00	0.0	0.0	0.0	0.00	0.00	0.00
1,000.0	0.00	0.00	1,000.0	3,657.00	0.0	0.0	0.0	0.00	0.00	0.00
1,100.0	0.00	0.00	1,100.0	3,557.00	0.0	0.0	0.0	0.00	0.00	0.00
1,200.0	0.00	0.00	1,200.0	3,457.00	0.0	0.0	0.0	0.00	0.00	0.00
1,300.0	0.00	0.00	1,300.0	3,357.00	0.0	0.0	0.0	0.00	0.00	0.00
1,400.0	0.00	0.00	1,400.0	3,257.00	0.0	0.0	0.0	0.00	0.00	0.00
1,500.0	0.00	0.00	1,500.0	3,157.00	0.0	0.0	0.0	0.00	0.00	0.00
1,600.0	0.00	0.00	1,600.0	3,057.00	0.0	0.0	0.0	0.00	0.00	0.00
1,700.0	0.00	0.00	1,700.0	2,957.00	0.0	0.0	0.0	0.00	0.00	0.00
1,800.0	0.00	0.00	1,800.0	2,857.00	0.0	0.0	0.0	0.00	0.00	0.00
1,900.0	0.00	0.00	1,900.0	2,757.00	0.0	0.0	0.0	0.00	0.00	0.00
2,000.0	0.00	0.00	2,000.0	2,657.00	0.0	0.0	0.0	0.00	0.00	0.00
<b>START NUDGE (3°/100ft BUR)</b>										
2,050.0	0.00	0.00	2,050.0	2,607.00	0.0	0.0	0.0	0.00	0.00	0.00
2,100.0	1.50	216.01	2,100.0	2,557.01	-0.5	-0.4	0.4	3.00	3.00	0.00
2,200.0	4.50	216.01	2,199.8	2,457.15	-4.8	-3.5	3.9	3.00	3.00	0.00
2,300.0	7.50	216.01	2,299.3	2,357.71	-13.2	-9.6	10.8	3.00	3.00	0.00
2,400.0	10.50	216.01	2,398.0	2,258.96	-25.9	-18.8	21.2	3.00	3.00	0.00
2,500.0	13.50	216.01	2,495.8	2,161.15	-42.7	-31.0	35.0	3.00	3.00	0.00
2,600.0	16.50	216.01	2,592.4	2,064.57	-63.6	-46.2	52.1	3.00	3.00	0.00
2,700.0	19.50	216.01	2,687.5	1,969.48	-88.6	-64.4	72.6	3.00	3.00	0.00
<b>EOB TO 21.17° INC</b>										
2,755.7	21.17	216.01	2,739.8	1,917.25	-104.3	-75.8	85.4	3.00	3.00	0.00
2,800.0	21.17	216.01	2,781.1	1,875.94	-117.2	-85.2	96.0	0.00	0.00	0.00
2,900.0	21.17	216.01	2,874.3	1,782.69	-146.4	-106.4	119.9	0.00	0.00	0.00
3,000.0	21.17	216.01	2,967.6	1,689.44	-175.6	-127.6	143.8	0.00	0.00	0.00
3,100.0	21.17	216.01	3,060.8	1,596.18	-204.9	-148.9	167.8	0.00	0.00	0.00
3,200.0	21.17	216.01	3,154.1	1,502.93	-234.1	-170.1	191.7	0.00	0.00	0.00
3,300.0	21.17	216.01	3,247.3	1,409.68	-263.3	-191.3	215.6	0.00	0.00	0.00
3,400.0	21.17	216.01	3,340.6	1,316.43	-292.5	-212.6	239.5	0.00	0.00	0.00
3,500.0	21.17	216.01	3,433.8	1,223.18	-321.7	-233.8	263.4	0.00	0.00	0.00
3,600.0	21.17	216.01	3,527.1	1,129.93	-350.9	-255.0	287.4	0.00	0.00	0.00
<b>PARKMAN</b>										
3,663.2	21.17	216.01	3,586.0	1,071.00	-369.4	-268.4	302.5	0.00	0.00	0.00
3,700.0	21.17	216.01	3,620.3	1,036.68	-380.1	-276.3	311.3	0.00	0.00	0.00
3,800.0	21.17	216.01	3,713.6	943.43	-409.4	-297.5	335.2	0.00	0.00	0.00
3,900.0	21.17	216.01	3,806.8	850.17	-438.6	-318.7	359.1	0.00	0.00	0.00
4,000.0	21.17	216.01	3,900.1	756.92	-467.8	-339.9	383.1	0.00	0.00	0.00
4,100.0	21.17	216.01	3,993.3	663.67	-497.0	-361.2	407.0	0.00	0.00	0.00
4,200.0	21.17	216.01	4,086.6	570.42	-526.2	-382.4	430.9	0.00	0.00	0.00
4,300.0	21.17	216.01	4,179.8	477.17	-555.4	-403.6	454.8	0.00	0.00	0.00
4,400.0	21.17	216.01	4,273.1	383.92	-584.6	-424.9	478.8	0.00	0.00	0.00
<b>SUSSEX</b>										
4,418.1	21.17	216.01	4,290.0	367.00	-589.9	-428.7	483.1	0.00	0.00	0.00
4,500.0	21.17	216.01	4,366.3	290.67	-613.9	-446.1	502.7	0.00	0.00	0.00

# Planning Report



<b>Database:</b>	EDM 5000.1 Single User Db	<b>Local Co-ordinate Reference:</b>	Well DT-HABITAT C3-5-6
<b>Company:</b>	EXTRACTION OIL & GAS	<b>TVD Reference:</b>	KB-EST @ 4657.0usft (SAV 802)
<b>Project:</b>	WELD COUNTY, COLORADO (NAD 83)	<b>MD Reference:</b>	KB-EST @ 4657.0usft (SAV 802)
<b>Site:</b>	NW NE SEC. 5 T5N R65W 6th P.M.	<b>North Reference:</b>	True
<b>Well:</b>	DT-HABITAT C3-5-6	<b>Survey Calculation Method:</b>	Minimum Curvature
<b>Wellbore:</b>	ORIGINAL WELLBORE		
<b>Design:</b>	PROPOSAL #2		

## Planned Survey

MD (usft)	Inc (°)	Azi (°)	TVD (usft)	SS (usft)	+N/-S (usft)	+E/-W (usft)	Vertical Section (usft)	Dogleg Rate (°/100usft)	Build Rate (°/100usft)	Turn Rate (°/100usft)
4,600.0	21.17	216.01	4,459.6	197.41	-643.1	-467.3	526.6	0.00	0.00	0.00
4,700.0	21.17	216.01	4,552.8	104.16	-672.3	-488.6	550.5	0.00	0.00	0.00
4,800.0	21.17	216.01	4,646.1	10.91	-701.5	-509.8	574.4	0.00	0.00	0.00
4,900.0	21.17	216.01	4,739.3	-82.34	-730.7	-531.0	598.4	0.00	0.00	0.00
5,000.0	21.17	216.01	4,832.6	-175.59	-759.9	-552.2	622.3	0.00	0.00	0.00
<b>SHANNON</b>										
<b>5,002.6</b>	<b>21.17</b>	<b>216.01</b>	<b>4,835.0</b>	<b>-178.00</b>	<b>-760.7</b>	<b>-552.8</b>	<b>622.9</b>	<b>0.00</b>	<b>0.00</b>	<b>0.00</b>
5,100.0	21.17	216.01	4,925.8	-268.84	-789.1	-573.5	646.2	0.00	0.00	0.00
5,200.0	21.17	216.01	5,019.1	-362.09	-818.4	-594.7	670.1	0.00	0.00	0.00
5,300.0	21.17	216.01	5,112.3	-455.35	-847.6	-615.9	694.1	0.00	0.00	0.00
5,400.0	21.17	216.01	5,205.6	-548.60	-876.8	-637.2	718.0	0.00	0.00	0.00
5,500.0	21.17	216.01	5,298.8	-641.85	-906.0	-658.4	741.9	0.00	0.00	0.00
5,600.0	21.17	216.01	5,392.1	-735.10	-935.2	-679.6	765.8	0.00	0.00	0.00
5,700.0	21.17	216.01	5,485.4	-828.35	-964.4	-700.9	789.8	0.00	0.00	0.00
5,800.0	21.17	216.01	5,578.6	-921.60	-993.6	-722.1	813.7	0.00	0.00	0.00
5,900.0	21.17	216.01	5,671.9	-1,014.85	-1,022.9	-743.3	837.6	0.00	0.00	0.00
<b>END OF TANGENT</b>										
<b>5,981.0</b>	<b>21.17</b>	<b>216.01</b>	<b>5,747.4</b>	<b>-1,090.39</b>	<b>-1,046.5</b>	<b>-760.5</b>	<b>857.0</b>	<b>0.00</b>	<b>0.00</b>	<b>0.00</b>
6,000.0	20.60	216.01	5,765.1	-1,108.14	-1,052.0	-764.5	861.5	3.00	-3.00	0.00
6,100.0	17.60	216.01	5,859.6	-1,202.62	-1,078.5	-783.7	883.1	3.00	-3.00	0.00
6,200.0	14.60	216.01	5,955.7	-1,298.69	-1,100.9	-800.0	901.5	3.00	-3.00	0.00
6,300.0	11.60	216.01	6,053.1	-1,396.08	-1,119.2	-813.3	916.5	3.00	-3.00	0.00
6,400.0	8.60	216.01	6,151.5	-1,494.52	-1,133.4	-823.7	928.1	3.00	-3.00	0.00
6,500.0	5.60	216.01	6,250.7	-1,593.74	-1,143.4	-830.9	936.3	3.00	-3.00	0.00
6,600.0	2.60	216.01	6,350.5	-1,693.47	-1,149.2	-835.1	941.1	3.00	-3.00	0.00
<b>EOD TO VERTICAL</b>										
<b>6,686.7</b>	<b>0.00</b>	<b>0.00</b>	<b>6,437.1</b>	<b>-1,780.14</b>	<b>-1,150.8</b>	<b>-836.3</b>	<b>942.4</b>	<b>3.00</b>	<b>-3.00</b>	<b>0.00</b>
6,700.0	0.00	0.00	6,450.4	-1,793.44	-1,150.8	-836.3	942.4	0.00	0.00	0.00
<b>KOP (10°/100ft BUR)</b>										
<b>6,716.7</b>	<b>0.00</b>	<b>0.00</b>	<b>6,467.1</b>	<b>-1,810.14</b>	<b>-1,150.8</b>	<b>-836.3</b>	<b>942.4</b>	<b>0.00</b>	<b>0.00</b>	<b>0.00</b>
6,800.0	8.33	272.51	6,550.1	-1,893.15	-1,150.5	-842.3	948.3	10.01	10.01	0.00
6,900.0	18.34	272.51	6,647.3	-1,990.33	-1,149.5	-865.3	971.2	10.00	10.00	0.00
<b>SHARON SPRINGS</b>										
<b>6,967.5</b>	<b>25.09</b>	<b>272.51</b>	<b>6,710.0</b>	<b>-2,053.00</b>	<b>-1,148.4</b>	<b>-890.3</b>	<b>995.9</b>	<b>10.00</b>	<b>10.00</b>	<b>0.00</b>
7,000.0	28.34	272.51	6,739.0	-2,082.03	-1,147.8	-904.9	1,010.3	10.00	10.00	0.00
<b>NIORARA</b>										
<b>7,001.1</b>	<b>28.45</b>	<b>272.51</b>	<b>6,740.0</b>	<b>-2,083.00</b>	<b>-1,147.8</b>	<b>-905.4</b>	<b>1,010.9</b>	<b>10.00</b>	<b>10.00</b>	<b>0.00</b>
7,100.0	38.34	272.51	6,822.5	-2,165.47	-1,145.4	-959.7	1,064.7	10.00	10.00	0.00
7,200.0	48.34	272.51	6,895.1	-2,238.11	-1,142.4	-1,028.2	1,132.6	10.00	10.00	0.00
7,300.0	58.34	272.51	6,954.7	-2,297.74	-1,138.9	-1,108.2	1,211.9	10.00	10.00	0.00
7,400.0	68.34	272.51	6,999.6	-2,342.55	-1,134.9	-1,197.4	1,300.3	10.00	10.00	0.00
<b>FORT HAYS</b>										
<b>7,415.3</b>	<b>69.87</b>	<b>272.51</b>	<b>7,005.0</b>	<b>-2,348.00</b>	<b>-1,134.3</b>	<b>-1,211.6</b>	<b>1,314.4</b>	<b>10.00</b>	<b>10.00</b>	<b>0.00</b>
7,500.0	78.34	272.51	7,028.2	-2,371.18	-1,130.8	-1,293.0	1,395.1	10.00	10.00	0.00
<b>CODELL</b>										
<b>7,509.4</b>	<b>79.28</b>	<b>272.51</b>	<b>7,030.0</b>	<b>-2,373.00</b>	<b>-1,130.4</b>	<b>-1,302.2</b>	<b>1,404.2</b>	<b>10.00</b>	<b>10.00</b>	<b>0.00</b>
7,600.0	88.34	272.51	7,039.8	-2,382.76	-1,126.4	-1,392.1	1,493.3	10.00	10.00	0.00
<b>7" ICP - DT-HABITAT C3-5-6</b>										
<b>7,616.6</b>	<b>90.00</b>	<b>272.51</b>	<b>7,040.0</b>	<b>-2,383.00</b>	<b>-1,125.7</b>	<b>-1,408.7</b>	<b>1,509.7</b>	<b>9.99</b>	<b>9.99</b>	<b>0.00</b>
7,700.0	90.00	272.51	7,040.0	-2,383.00	-1,122.0	-1,492.0	1,592.3	0.00	0.00	0.00
7,800.0	90.00	272.51	7,040.0	-2,383.00	-1,117.6	-1,591.9	1,691.3	0.00	0.00	0.00
7,900.0	90.00	272.51	7,040.0	-2,382.99	-1,113.3	-1,691.8	1,790.4	0.00	0.00	0.00
8,000.0	90.00	272.51	7,040.0	-2,382.99	-1,108.9	-1,791.7	1,889.4	0.00	0.00	0.00



# Planning Report



<b>Database:</b>	EDM 5000.1 Single User Db	<b>Local Co-ordinate Reference:</b>	Well DT-HABITAT C3-5-6
<b>Company:</b>	EXTRACTION OIL & GAS	<b>TVD Reference:</b>	KB-EST @ 4657.0usft (SAV 802)
<b>Project:</b>	WELD COUNTY, COLORADO (NAD 83)	<b>MD Reference:</b>	KB-EST @ 4657.0usft (SAV 802)
<b>Site:</b>	NW NE SEC. 5 T5N R65W 6th P.M.	<b>North Reference:</b>	True
<b>Well:</b>	DT-HABITAT C3-5-6	<b>Survey Calculation Method:</b>	Minimum Curvature
<b>Wellbore:</b>	ORIGINAL WELLBORE		
<b>Design:</b>	PROPOSAL #2		

Planned Survey										
MD (usft)	Inc (°)	Azi (°)	TVD (usft)	SS (usft)	+N/-S (usft)	+E/-W (usft)	Vertical Section (usft)	Dogleg Rate (°/100usft)	Build Rate (°/100usft)	Turn Rate (°/100usft)
8,100.0	90.00	272.51	7,040.0	-2,382.99	-1,104.5	-1,891.6	1,988.4	0.00	0.00	0.00
8,200.0	90.00	272.51	7,040.0	-2,382.99	-1,100.1	-1,991.5	2,087.5	0.00	0.00	0.00
8,300.0	90.00	272.51	7,040.0	-2,382.98	-1,095.7	-2,091.4	2,186.5	0.00	0.00	0.00
8,400.0	90.00	272.51	7,040.0	-2,382.98	-1,091.3	-2,191.3	2,285.5	0.00	0.00	0.00
8,500.0	90.00	272.51	7,040.0	-2,382.98	-1,087.0	-2,291.2	2,384.5	0.00	0.00	0.00
8,600.0	90.00	272.51	7,040.0	-2,382.98	-1,082.6	-2,391.1	2,483.6	0.00	0.00	0.00
8,700.0	90.00	272.51	7,040.0	-2,382.98	-1,078.2	-2,491.0	2,582.6	0.00	0.00	0.00
8,800.0	90.00	272.51	7,040.0	-2,382.97	-1,073.8	-2,590.9	2,681.6	0.00	0.00	0.00
8,900.0	90.00	272.51	7,040.0	-2,382.97	-1,069.4	-2,690.8	2,780.7	0.00	0.00	0.00
9,000.0	90.00	272.51	7,040.0	-2,382.97	-1,065.0	-2,790.7	2,879.7	0.00	0.00	0.00
9,100.0	90.00	272.51	7,040.0	-2,382.97	-1,060.7	-2,890.6	2,978.7	0.00	0.00	0.00
9,200.0	90.00	272.51	7,040.0	-2,382.97	-1,056.3	-2,990.5	3,077.7	0.00	0.00	0.00
9,300.0	90.00	272.51	7,040.0	-2,382.97	-1,051.9	-3,090.4	3,176.8	0.00	0.00	0.00
9,400.0	90.00	272.51	7,040.0	-2,382.96	-1,047.5	-3,190.3	3,275.8	0.00	0.00	0.00
9,500.0	90.00	272.51	7,040.0	-2,382.96	-1,043.1	-3,290.2	3,374.8	0.00	0.00	0.00
9,600.0	90.00	272.51	7,040.0	-2,382.96	-1,038.7	-3,390.2	3,473.9	0.00	0.00	0.00
9,700.0	90.00	272.51	7,040.0	-2,382.96	-1,034.3	-3,490.1	3,572.9	0.00	0.00	0.00
9,800.0	90.00	272.51	7,040.0	-2,382.96	-1,030.0	-3,590.0	3,671.9	0.00	0.00	0.00
9,900.0	90.00	272.51	7,040.0	-2,382.96	-1,025.6	-3,689.9	3,770.9	0.00	0.00	0.00
10,000.0	90.00	272.51	7,040.0	-2,382.96	-1,021.2	-3,789.8	3,870.0	0.00	0.00	0.00
10,100.0	90.00	272.51	7,040.0	-2,382.96	-1,016.8	-3,889.7	3,969.0	0.00	0.00	0.00
10,200.0	90.00	272.51	7,040.0	-2,382.96	-1,012.4	-3,989.6	4,068.0	0.00	0.00	0.00
10,300.0	90.00	272.51	7,040.0	-2,382.96	-1,008.0	-4,089.5	4,167.1	0.00	0.00	0.00
10,400.0	90.00	272.51	7,040.0	-2,382.95	-1,003.6	-4,189.4	4,266.1	0.00	0.00	0.00
10,500.0	90.00	272.51	7,040.0	-2,382.95	-999.3	-4,289.3	4,365.1	0.00	0.00	0.00
10,600.0	90.00	272.51	7,040.0	-2,382.95	-994.9	-4,389.2	4,464.1	0.00	0.00	0.00
10,700.0	90.00	272.51	7,040.0	-2,382.95	-990.5	-4,489.1	4,563.2	0.00	0.00	0.00
10,800.0	90.00	272.51	7,040.0	-2,382.95	-986.1	-4,589.0	4,662.2	0.00	0.00	0.00
10,900.0	90.00	272.51	7,040.0	-2,382.95	-981.7	-4,688.9	4,761.2	0.00	0.00	0.00
11,000.0	90.00	272.51	7,040.0	-2,382.95	-977.3	-4,788.8	4,860.3	0.00	0.00	0.00
11,100.0	90.00	272.52	7,040.0	-2,382.95	-972.9	-4,888.7	4,959.3	0.00	0.00	0.00
11,200.0	90.00	272.52	7,040.0	-2,382.95	-968.5	-4,988.6	5,058.3	0.00	0.00	0.00
11,300.0	90.00	272.52	7,040.0	-2,382.95	-964.2	-5,088.5	5,157.3	0.00	0.00	0.00
11,400.0	90.00	272.52	7,040.0	-2,382.95	-959.8	-5,188.4	5,256.4	0.00	0.00	0.00
11,500.0	90.00	272.52	7,040.0	-2,382.95	-955.4	-5,288.3	5,355.4	0.00	0.00	0.00
11,600.0	90.00	272.52	7,040.0	-2,382.95	-951.0	-5,388.2	5,454.4	0.00	0.00	0.00
11,700.0	90.00	272.52	7,040.0	-2,382.95	-946.6	-5,488.1	5,553.4	0.00	0.00	0.00
11,800.0	90.00	272.52	7,040.0	-2,382.95	-942.2	-5,588.0	5,652.5	0.00	0.00	0.00
11,900.0	90.00	272.52	7,040.0	-2,382.95	-937.8	-5,687.9	5,751.5	0.00	0.00	0.00
12,000.0	90.00	272.52	7,040.0	-2,382.96	-933.4	-5,787.8	5,850.5	0.00	0.00	0.00
12,100.0	90.00	272.52	7,040.0	-2,382.96	-929.0	-5,887.7	5,949.6	0.00	0.00	0.00
12,200.0	90.00	272.52	7,040.0	-2,382.96	-924.6	-5,987.6	6,048.6	0.00	0.00	0.00
12,300.0	90.00	272.52	7,040.0	-2,382.96	-920.3	-6,087.6	6,147.6	0.00	0.00	0.00
12,400.0	90.00	272.52	7,040.0	-2,382.96	-915.9	-6,187.5	6,246.6	0.00	0.00	0.00
12,500.0	90.00	272.52	7,040.0	-2,382.96	-911.5	-6,287.4	6,345.7	0.00	0.00	0.00
12,600.0	90.00	272.52	7,040.0	-2,382.96	-907.1	-6,387.3	6,444.7	0.00	0.00	0.00
12,700.0	90.00	272.52	7,040.0	-2,382.96	-902.7	-6,487.2	6,543.7	0.00	0.00	0.00
12,800.0	90.00	272.52	7,040.0	-2,382.96	-898.3	-6,587.1	6,642.8	0.00	0.00	0.00
12,900.0	90.00	272.52	7,040.0	-2,382.96	-893.9	-6,687.0	6,741.8	0.00	0.00	0.00
13,000.0	90.00	272.52	7,040.0	-2,382.97	-889.5	-6,786.9	6,840.8	0.00	0.00	0.00
13,100.0	90.00	272.52	7,040.0	-2,382.97	-885.1	-6,886.8	6,939.8	0.00	0.00	0.00
13,200.0	90.00	272.52	7,040.0	-2,382.97	-880.7	-6,986.7	7,038.9	0.00	0.00	0.00
13,300.0	90.00	272.52	7,040.0	-2,382.97	-876.3	-7,086.6	7,137.9	0.00	0.00	0.00
13,400.0	90.00	272.52	7,040.0	-2,382.97	-872.0	-7,186.5	7,236.9	0.00	0.00	0.00

<b>Database:</b>	EDM 5000.1 Single User Db	<b>Local Co-ordinate Reference:</b>	Well DT-HABITAT C3-5-6
<b>Company:</b>	EXTRACTION OIL & GAS	<b>TVD Reference:</b>	KB-EST @ 4657.0usft (SAV 802)
<b>Project:</b>	WELD COUNTY, COLORADO (NAD 83)	<b>MD Reference:</b>	KB-EST @ 4657.0usft (SAV 802)
<b>Site:</b>	NW NE SEC. 5 T5N R65W 6th P.M.	<b>North Reference:</b>	True
<b>Well:</b>	DT-HABITAT C3-5-6	<b>Survey Calculation Method:</b>	Minimum Curvature
<b>Wellbore:</b>	ORIGINAL WELLBORE		
<b>Design:</b>	PROPOSAL #2		

## Planned Survey

MD (usft)	Inc (°)	Azi (°)	TVD (usft)	SS (usft)	+N/-S (usft)	+E/-W (usft)	Vertical Section (usft)	Dogleg Rate (°/100usft)	Build Rate (°/100usft)	Turn Rate (°/100usft)
13,500.0	90.00	272.52	7,040.0	-2,382.97	-867.6	-7,286.4	7,335.9	0.00	0.00	0.00
13,600.0	90.00	272.52	7,040.0	-2,382.98	-863.2	-7,386.3	7,435.0	0.00	0.00	0.00
13,700.0	90.00	272.52	7,040.0	-2,382.98	-858.8	-7,486.2	7,534.0	0.00	0.00	0.00
13,800.0	90.00	272.52	7,040.0	-2,382.98	-854.4	-7,586.1	7,633.0	0.00	0.00	0.00
13,900.0	90.00	272.52	7,040.0	-2,382.98	-850.0	-7,686.0	7,732.1	0.00	0.00	0.00
14,000.0	90.00	272.52	7,040.0	-2,382.98	-845.6	-7,785.9	7,831.1	0.00	0.00	0.00
14,100.0	90.00	272.52	7,040.0	-2,382.99	-841.2	-7,885.8	7,930.1	0.00	0.00	0.00
14,200.0	90.00	272.52	7,040.0	-2,382.99	-836.8	-7,985.7	8,029.1	0.00	0.00	0.00
14,300.0	90.00	272.52	7,040.0	-2,382.99	-832.4	-8,085.6	8,128.2	0.00	0.00	0.00
14,400.0	90.00	272.52	7,040.0	-2,382.99	-828.0	-8,185.5	8,227.2	0.00	0.00	0.00
14,500.0	90.00	272.52	7,040.0	-2,382.99	-823.6	-8,285.4	8,326.2	0.00	0.00	0.00
14,600.0	90.00	272.52	7,040.0	-2,383.00	-819.2	-8,385.3	8,425.2	0.00	0.00	0.00
14,700.0	90.00	272.52	7,040.0	-2,383.00	-814.8	-8,485.2	8,524.3	0.00	0.00	0.00
<b>BHL - DT-HABITAT C3-5-6</b>										
<b>14,705.5</b>	<b>90.00</b>	<b>272.52</b>	<b>7,040.0</b>	<b>-2,383.00</b>	<b>-814.6</b>	<b>-8,490.7</b>	<b>8,529.7</b>	<b>0.00</b>	<b>0.00</b>	<b>0.00</b>

## Formations

MD (usft)	TVD (usft)	Name	Lithology	Dip (°)	Dip Direction (°)
3,663.2	3,586.0	PARKMAN			
4,418.1	4,290.0	SUSSEX			
5,002.6	4,835.0	SHANNON			
6,967.5	6,710.0	SHARON SPRINGS			
7,001.1	6,740.0	NIOBRARA			
7,415.3	7,005.0	FORT HAYS			
7,509.4	7,030.0	CODELL			

## Plan Annotations

MD (usft)	TVD (usft)	Local Coordinates		Comment
		+N/-S (usft)	+E/-W (usft)	
2,050.0	2,050.0	0.0	0.0	START NUDGE (3°/100ft BUR)
2,755.7	2,739.8	-104.3	-75.8	EOB TO 21.17° INC
5,981.0	5,747.4	-1,046.5	-760.5	END OF TANGENT
6,686.7	6,437.1	-1,150.8	-836.3	EOD TO VERTICAL
6,716.7	6,467.1	-1,150.8	-836.3	KOP (10°/100ft BUR)
7,616.6	7,040.0	-1,125.7	-1,408.7	7" ICP - DT-HABITAT C3-5-6
14,705.5	7,040.0	-814.6	-8,490.7	BHL - DT-HABITAT C3-5-6